



Oracle Workforce Management Cloud

Getting Started Guide

Release 20C



This software and related documentation are provided under a license agreement containing restrictions on use and disclosure and are protected by intellectual property laws. Except as expressly permitted in your license agreement or allowed by law, you may not use, copy, reproduce, translate, broadcast, modify, license, transmit, distribute, exhibit, perform, publish, or display any part, in any form, or by any means. Reverse engineering, disassembly, or decompilation of this software, unless required by law for interoperability, is prohibited.

The information contained herein is subject to change without notice and is not warranted to be error-free. If you find any errors, please report them to us in writing.

If this is software or related documentation that is delivered to the U.S. Government or anyone licensing it on behalf of the U.S. Government, then the following notice is applicable:

U.S. GOVERNMENT END USERS: Oracle programs (including any operating system, integrated software, any programs embedded, installed or activated on delivered hardware, and modifications of such programs) and Oracle computer documentation or other Oracle data delivered to or accessed by U.S. Government end users are "commercial computer software" or commercial computer software documentation pursuant to the applicable Federal Acquisition Regulation and agency-specific supplemental regulations. As such, the use, reproduction, duplication, release, display, disclosure, modification, preparation of derivative works, and/or adaptation of i) Oracle programs (including any operating system, integrated software, any programs embedded, installed or activated on delivered hardware, and modifications of such programs), ii) Oracle computer documentation and/or iii) other Oracle data, is subject to the rights and limitations specified in the license contained in the applicable contract. The terms governing the U.S. Governments use of Oracle cloud services are defined by the applicable contract for such services. No other rights are granted to the U.S. Government.

This software or hardware is developed for general use in a variety of information management applications. It is not developed or intended for use in any inherently dangerous applications, including applications that may create a risk of personal injury. If you use this software or hardware in dangerous applications, then you shall be responsible to take all appropriate fail-safe, backup, redundancy, and other measures to ensure its safe use. Oracle Corporation and its affiliates disclaim any liability for any damages caused by use of this software or hardware in dangerous applications.

Oracle and Java are registered trademarks of Oracle and/or its affiliates. Other names may be trademarks of their respective owners.

Intel and Intel Inside are trademarks or registered trademarks of Intel Corporation. All SPARC trademarks are used under license and are trademarks or registered trademarks of SPARC International, Inc. AMD, Epyc, and the AMD logo are trademarks or registered trademarks of Advanced Micro Devices. UNIX is a registered trademark of The Open Group.

This software or hardware and documentation may provide access to or information about content, products, and services from third parties. Oracle Corporation and its affiliates are not responsible for and expressly disclaim all warranties of any kind with respect to third-party content, products, and services unless otherwise set forth in an applicable agreement between you and Oracle. Oracle Corporation and its affiliates will not be responsible for any loss, costs, or damages incurred due to your access to or use of third-party content, products, or services, except as set forth in an applicable agreement between you and Oracle.

Documentation Accessibility

For information about Oracle's commitment to accessibility, visit the Oracle Accessibility Program website.

Access to Oracle Support

Oracle customers that have purchased support have access to electronic support through My Oracle Support. For information, visit My Oracle Support or visit Accessible Oracle Support if you are hearing impaired.

Contents

Preface	i
1 System Overview	1
Parent-Child Company Hierarchy	1
User Menu Configuration	3
System Integration Framework	8
2 Clock In / Out	11
What is Clock In/Out?	11
UI Clock Screen	11
Clocking Process Flow	11
3 Integration of WFM with WMS	13
WMS Activity	13
Data Flow from WMS to WFM using ETL	13
4 WFM Reports	15
WFM Reports	15
5 Appendix	17
Roles and Permissions	17
Clocking Modes	18

Preface

Oracle® Workforce Management Cloud Getting Started Guide, Release 20C

Part No. F31363-01

This guide describes in detail how to configure and use Oracle Warehouse Management (WMS) Cloud. All functionality unless specifically noted is available in Oracle Warehouse Management Enterprise Edition Cloud. Please direct any functionality questions to *My Oracle Support*.

Change History

Date	Document Revision	Summary of Changes
6/3/2020	-01	Updates for 20C. Converting to HTML. Added (corresponding/desired/appropriate supported language) to Creating Users topic.

Using Applications

Additional Resources

- **Community:** Use *Oracle Cloud Customer Connect* to get information from experts at Oracle, the partner community, and other users.
- **Guides and Videos:** Go to the *Oracle Help Center* to find guides and videos.
- **Training:** Take courses on Oracle Cloud from *Oracle University*.

Conventions

The following table explains the text conventions used in this guide.

Convention	Meaning
boldface	Boldface type indicates user interface elements, navigation paths, or values you enter or select.
<code>monospace</code>	Monospace type indicates file, folder, and directory names, code examples, commands, and URLs.
>	Greater than symbol separates elements in a navigation path.

Contacting Oracle

Access to Oracle Support

Oracle customers that have purchased support have access to electronic support through My Oracle Support. For information, visit *My Oracle Support* or visit *Accessible Oracle Support* if you are hearing impaired.

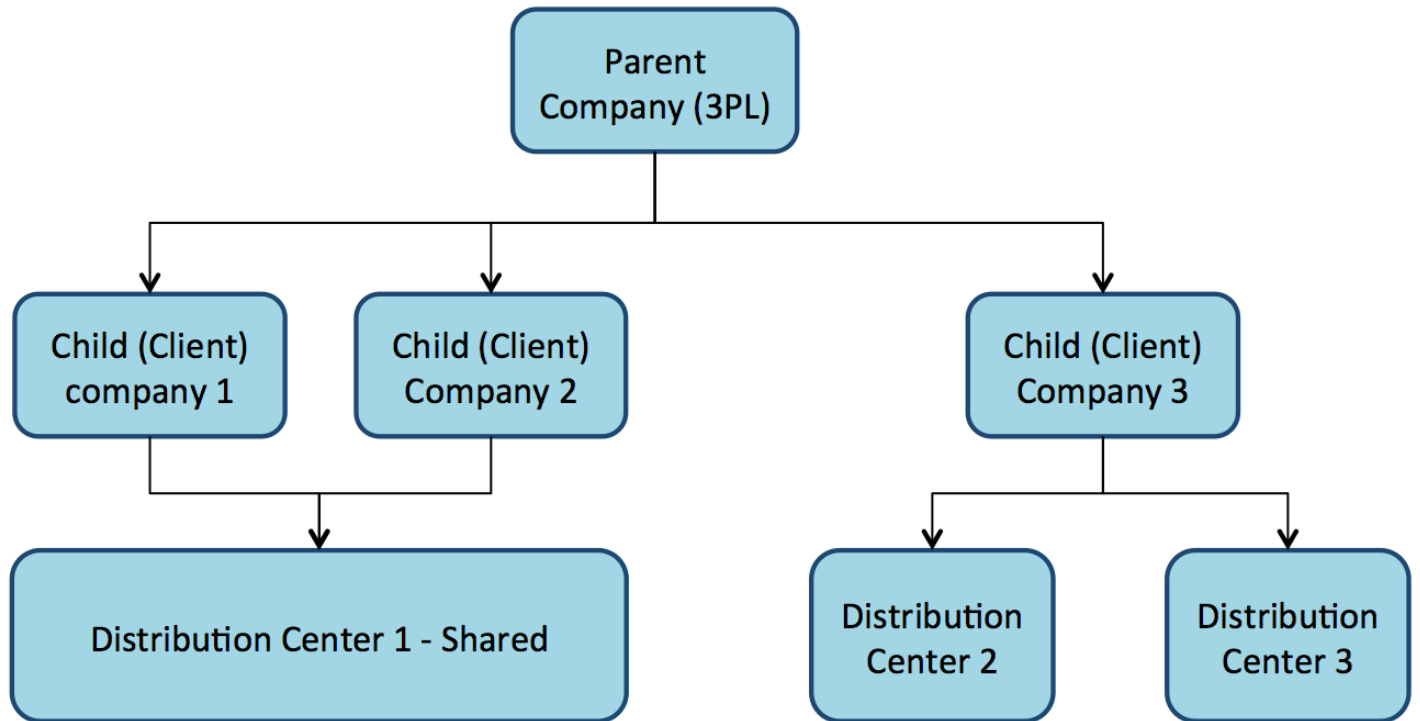
Comments and Suggestions

Please give us feedback about our help and guides! You can send an email to: *[http://owms-cloud-comms_us@oracle.com](mailto:owms-cloud-comms_us@oracle.com)*

1 System Overview

Parent-Child Company Hierarchy

In WMS, companies are divided into parent and child companies. This structure exists in order to help 3PLs view and manage their clients' inventory separately. Depending on how many clients and how many warehouses the 3PL has, views can be managed accordingly:



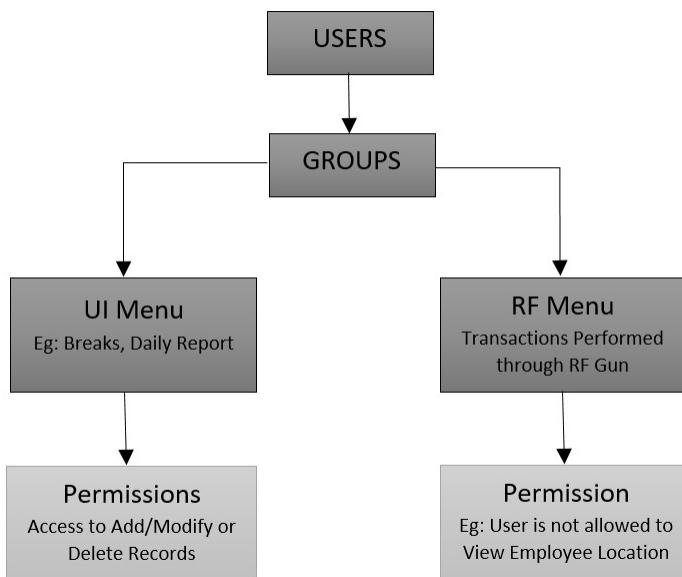
To toggle a specific Distribution Center (DC) view for a company, select the choices from the two drop-down menus located at the top right of the UI screen.

In the following screen, the first drop-down denotes a facility (DC), while the second drop-down denotes the companies in the environment:

The screenshot shows the top navigation bar of the Oracle Workforce Management Cloud UI. It includes a home icon, a search bar, a magnifying glass icon, a star icon, and a dropdown menu labeled 'ATL - NJ_COMP'. Below the navigation bar, there are two drop-down menus: 'Facility' with 'ATL' selected and 'Company' with 'NJ_COMP' selected. These two menus are highlighted by a red rectangular box. Below the menus, there is a button labeled 'Change' and a partially visible button labeled 'Generate MHE Distribut'.

User Menu Configuration

Oracle Workforce Management Cloud organizes user structure in the following way:



Users, Groups and Menus

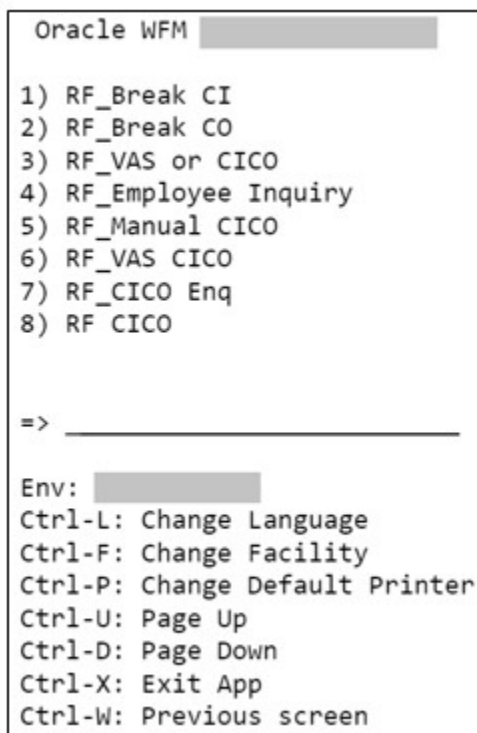
Users are separated into groups based on their operational purpose in the warehouse. Every user within a group shares the same user interface (UI) and radio frequency (RF) menus. Within each menu, you can configure user permissions and parameters for RF menus.

What is a UI menu?

The UI menu is a series of views that are accessible to you in the WFM via the browser. A menu view allows you to create a UI menu and add the menu to a group.

What is an RF menu?

The RF menu is the series of transactions that are accessible to you via the RF gun on the warehouse floor. You can use screens, or modules to perform processes such as Clocking, Break, and Employee Inquiry. Similar to creating the UI Menu, a menu view on the browser allows you to create an RF menu and add the menu to a group.



When you use the transactions on the RF handheld, you must ensure that you are operating the transactions in the correct facility. You can verify this on top of any view in RF as highlighted in the following figure:

```
Oracle WFM [redacted]  
BreaksRF_Break CI  
1) Afternoon coffee Break  
2) LUNCH  
3) Morning Tea Break
```

```
=> _____
```

```
Env: [redacted]  
Ctrl-U: Page Up  
Ctrl-D: Page Down  
Ctrl-X: Exit App  
Ctrl-W: Previous screen
```

Note: To change facilities, press Ctrl-F and type in the Facility code.

Creating Users

You can create new users via the user's screen where you can define the following:

- Username and password
- The facilities and companies the user has access for
- The user's role (Administrator, Management, Supervisor, etc.)
- The user's default group (UI and RF Menus)
- The user's language (corresponding/desired/appropriate supported language)
- The user's fixed equipment type

Creating New Users

1. On the Users screen.
2. Click the **Create** button and populate the necessary fields:
3. Click **Save** when done.
4. To configure the Facilities and Companies that the user needs to have access to, select the user and click the **Eligible Facilities/Eligible Companies** buttons.

This takes you to the respective views that lists all the facilities/companies.

5. Click the **Create** button to add new Facilities or Companies.
6. When finished, return to the main screen.
7. To assign Equipment Types to a user:
 - o Select user.
 - o Click on **assign_equipment_type**.
 - o Select an **Equipment Type** from the drop-down menu.
 - o Click on **submit**.

Note: Equipment Types must be first defined in the Equipment Types screen before assigning them to users.

Note for Key Fields

- **RUT:** Unique identifier (alphanumeric). Must be same as defined in WMS for this user
- **Type:** Field used to distinguish between internal and external users.
- **Facility:** Defines the default Facility that the user is displayed upon login.
- **Company:** Defines the default company that the user is displayed upon login.
- **Shift:** Defines the user's shift, if applicable. Shifts are created in the Shifts screen, which defines the start and end time.
- **Role:** Defines the user's role in the warehouse. Each role has a different set of permissions for viewing reports in Oracle Workforce Management Cloud (UI permissions only).
- **Language:** Sets the user's language (English or Spanish).
- **Default Group:** Defines the default group that is displayed when this user logs in. Users can be assigned to multiple groups via the Groups button. If a user is assigned to multiple groups, user can switch Group views by clicking the drop-down next to his name on the top right and then clicking View, and finally selecting the desired Group.

Configuring Menus for Users

There are five steps to add Group menus.

- Creating UI and RF Screens
- Adding Screens to different Menus
- Assigning Menus to Groups

- Assigning Groups to Users
- Creating and Assigning Facilities & Companies to Users

Creating UI and RF Screens

1. On the Screens UI view, click **Generate Screens**.
2. Select all the necessary screens for the Group (eg. Productivity Report, Break Report etc.).
3. Add both UI and RF screens.
4. Click **Save** when done.

Note: For RF menus, extra configuration might be required (RF module parameters). To modify its parameters, select the RF screen and click the **Details** button.

Adding Screens to Different Menus

On the Menus view, create a new menu, one for the UI and one for the RF using the **Create** button.

Select each menu and click on the **Details** button. To insert screens under each menu, use the **Insert Screen** button. However, if you need additional levels under each main UI and RF menu, you could use **Insert Menu** button.

Assigning Menus to Groups

Once the Menus have been set up, it is now time to add them to Groups. On the Groups screen:

1. Click the **Create** button to create a new group.
2. Type in the group name.
3. Select the UI/RF menus from the drop-down menus.
4. Click **Save**.

From the Groups screen, you can use the Permissions button to assign specific permissions to a group. This takes you to a new view where you can choose permission for each screen for this group.

Assigning Groups to Users

Now that Groups have been created, you now add users to each group. On the User screen:

1. Select a user to assign to a group.
2. Click on **Groups**.
3. Using the Create button, add the Group(s) to assign the user to the Group.

Creating and Assigning Facilities and Companies to Users

Facilities and Companies in Oracle Workforce Management Cloud need to match the facilities and companies in Oracle WMS Cloud.

To create companies, on the Companies screen:

1. Click the **Create** button.
2. Populate the company's information such as the Code, Name, and Address.
3. Click **Save**.

Note: The first company is the parent company in the environment by default. The Parent Company has the same code in the Parent Company Column OR has a *.

Facilities are controlled at the company level. This means that every company has its own set of facilities. This link is defined in the Parent Company column in the Facilities screen.

To Create Facilities, on the **Facilities** screen:

1. Click the Create button.
2. Populate the facility's information such as the Code, Name, and Address.

Functional Field Descriptions for Facilities

- **Parent Company:** Denotes the company that the facility belongs to.

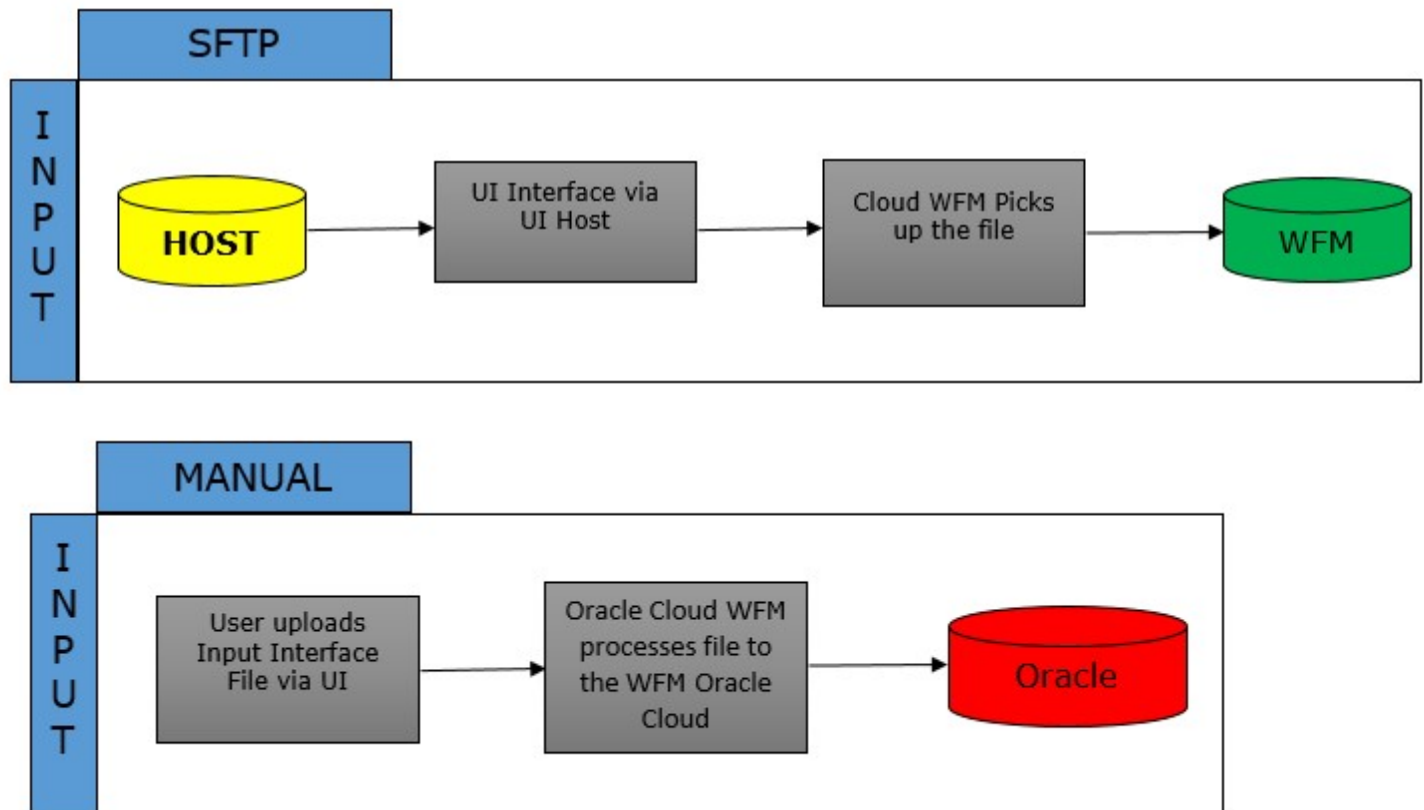
Once the Companies and Facilities have been created, the next task is to assign them to users.

Related Topics

- [Creating Users](#)

System Integration Framework

Oracle Workforce Management Cloud uses the following methods for processing interface files into Oracle Workforce Management Cloud:



Supported Formats

Oracle Workforce Management Cloud supports the following formats with interfaces:

- Flat files
- XML files
- CSV files
- XLS files

Input Interfaces

- User
- Sku Lines
- Prod Goal Line
- Prod Goal VAS
- Clock

Uploading Interface Files with Oracle Workforce Management Cloud

If you are manually preparing the input interface file via Excel, it is important to follow these best practices:

- The filename must start with the phrase as specified in the Input File Formats document (the filename must begin with USR for uploading User files).
- The columns specified as required in the interface specification document must be populated.
- You must populate the correct sequence in the seq_nbr field (i.e. no duplicate values).

2 Clock In / Out

What is Clock In/Out?

Clocking is a process that is done in order to ensure that the time stamps of every user entering and exiting the Warehouse/facility is captured in WFM. It also captures the user's entry and exit into Work Areas, VAS activities, Manual activities, and Break.

WFM provides multiple options of clocking in and clocking out. If a 3rd party time management system is used by the warehouse, user's exit into and out of the facility can also be interfaced from this system into WFM as the facility clock-in/clock out time.

Note: If users do not clock in/out, then WFM will fail to report user activities appropriately.

UI Clock Screen

The user can select an option in the clicking mode to clock in/out, and once all parameters have been selected using the drop-downs, he can click clock in/out.

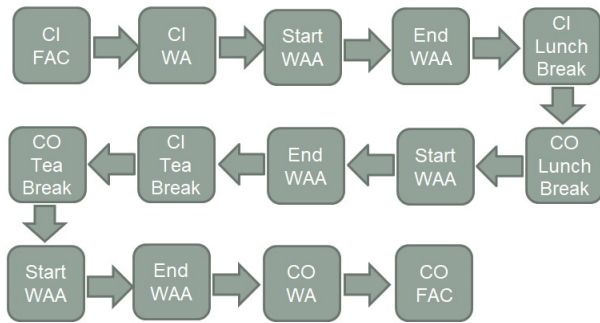
Related Topics

- [Clocking Modes](#)

Clocking Process Flow

Users are required to follow a specific clock-in/clock out process. The following figure depicts a typical clock-in/out flow assuming that the user is performing activity in a single work area on this day.

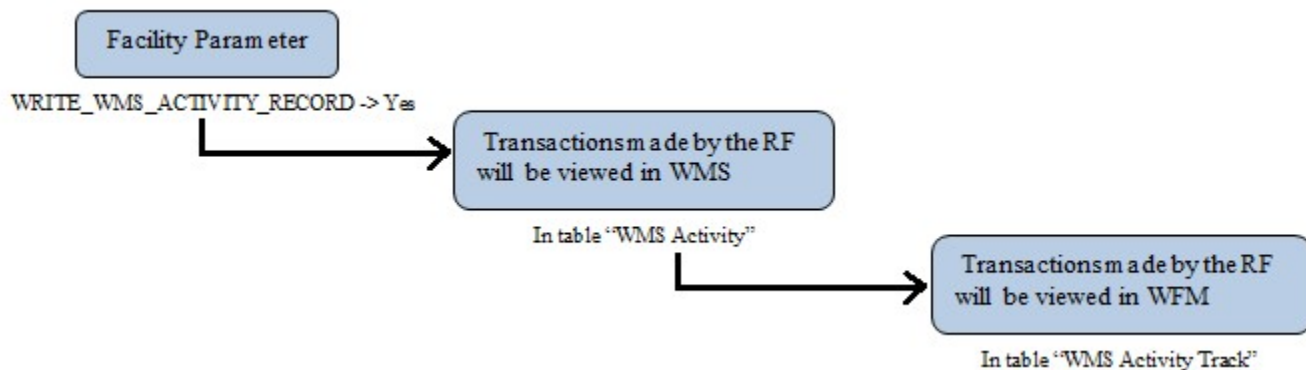
Every user has to clock into (CI) the facility (FAC) when he/she enters the warehouse/building. As the next logical step, the user needs to clock into the Work Area (WA) where the user will start performing his warehouse activities (WAA – Work Area Activities). If the user needs to step out for lunch or tea breaks, he needs to clock in/out to indicate that to WFM. Finally he needs to clock (CO) of the Work Area and from the Facility.



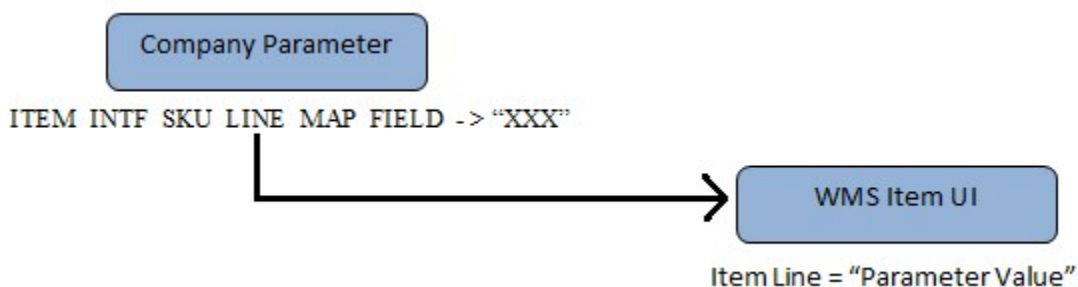
3 Integration of WFM with WMS

WMS Activity

For transactions to move from WMS to WFM, the Facility parameter "WRITE_WMS_ACTIVITY_RECORD" in WMS must be set to "YES". This parameter allows transaction details to be logged in the WMS_ACTIVITY tables in WMS database. Transaction data will remain in these tables only for a brief period of time, since it must be purged from time to time so as not to impair the performance of the WMS.

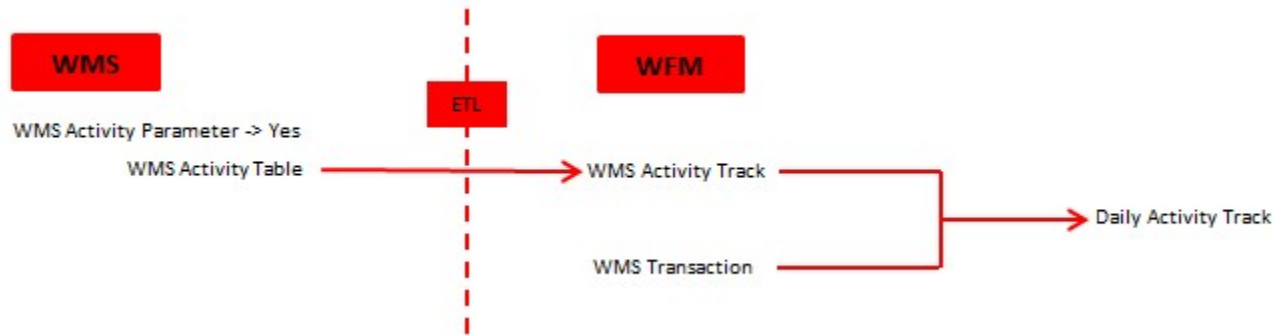


One of the integration touch points between the WMS and WFM is the "SKU Line" which is used for grouping of articles with reasonably similar physical characteristics that is created to segment the item master. The SKU LINE can take any field that comes within the item master that is sent by interface. To have the SKU LINE field in the WMS, the company parameter "ITEM_INTF_SKU_LINE_MAP_FIELD", used with the name of the field selected in the item master.



Data Flow from WMS to WFM using ETL

The ETL SCRIPT can be scheduled run and fetch WMS Activity data based on the customer's requirement from WMS to the WFM.



4 WFM Reports

See this topic for more details about WFM Reports.

Related Topics

- [WFM Reports](#)

WFM Reports

There are several reports in WFM that help to provide information regarding users and their productivity.

A few sample reports are as below:

Daily Report

This report provides visibility of:

- Time the users clock into and out of the facility
- Time the users clock into and out of different work areas
- Time spent on lunch and tea/coffee breaks

Break Report

This report compares the time users take for each break against the time allocated for breaks.

Productivity Report

This report shows the total productivity of users grouped by activities. Each of these activities can be further drilled down to list users that worked on each activity and drilled to a second level to list all SKU lines that each user worked on.

ORACLE® WFM 9

Home

Search

🔍

★

Users

Companies

Facilities

Screens

Daily Activity Track

Productivity Report

Productivity Report

↺

🔍

Chart

Activity	UOM	UOM(quantity)	UOM(H:M:S)	Productivity %	Pre Pack
CC by Qty	Units	1	00:00:42	13.35	No
Change Assortment	LPNs	1	00:00:14	428.45	No
Create LPN Eaches	Units	8	00:09:00	2.78	No
Create LPN from Act Eaches	Units	19	00:11:30	177.3	No
Create LPN Qty	Units	333	00:27:31	52.06	No
Depalettize	LPNs	1	00:00:03	1204.82	No
Directed Putaway	LPNs	6	00:08:33	247.68	No
Locate Pallet/Tote	LPNs	4	00:00:51	176.55	No
Mod/Cancel OBLPN	Units	1	00:00:35	0	No
Modify IBLPN	Units	23	00:01:08	661.74	No

5 Appendix

See the following topics for details on Roles/Permissions and Clocking Modes.

Related Topics

- [Roles and Permissions](#)
- [Clocking Modes](#)

Roles and Permissions

PERMISSIONS FOR ROLE: ADMINISTRATOR				
Add company	10	Add facility	19	Save company menu
Delete company	11	Change facility	20	Save group menu
Change company	12	Delete facility	21	Modify view columns
Add user	13	Modify view columns	22	Reorder view columns
Delete user	14	Reorder view columns	23	Save group view
Change user	15	Save company view	24	Save user view
Add group	16	Save group view	25	Modify menus
Delete group	17	Save user view	26	Save company menu
Change group	18	Modify menus	27	Save group menu.

Note: By default, Administrators have access to all companies that the facility is eligible to access.

PERMISSIONS FOR ROLE: MANAGEMENT			
1	Change user	10	Modify menus
2	Add user	11	Save group menu
3	Add facility	12	Modify view columns
4	Change facility	13	Reorder view columns
5	Delete facility	14	Save group view

PERMISSIONS FOR ROLE: MANAGEMENT			
6	Modify view columns	15	Save user view
7	Reorder view columns	16	Modify menus
8	Save group view	17	Save group menu.
9	Save user view		

PERMISSIONS FOR ROLE: SUPERVISOR			
1	Change user	5	Save group view
2	Change facility	6	Save user view
3	Modify view column	7	Modify menus
4	Reorder view columns	8	Save group menu.

PERMISSIONS FOR ROLE: GUARD	
1	Read-only access; users cannot create, copy, edit or delete.

PERMISSIONS FOR ROLE: EMPLOYEE	
1	Read-only access; users cannot create, copy, edit or delete.

Note: These permissions apply for the UI screens only; RF permissions are not affected.

Clocking Modes

Clocking Modes	
Facility	
Work Area	
VAS	
Manual	
Break	