

Oracle® Communications Convergent Charging Controller Location Capabilities Pack User's Guide



Release 15.2

G47604-01

January 2026

The Oracle logo, consisting of a solid red square with the word "ORACLE" in white, uppercase, sans-serif font centered within it.

ORACLE®

Copyright © 2026, Oracle and/or its affiliates.

This software and related documentation are provided under a license agreement containing restrictions on use and disclosure and are protected by intellectual property laws. Except as expressly permitted in your license agreement or allowed by law, you may not use, copy, reproduce, translate, broadcast, modify, license, transmit, distribute, exhibit, perform, publish, or display any part, in any form, or by any means. Reverse engineering, disassembly, or decompilation of this software, unless required by law for interoperability, is prohibited.

The information contained herein is subject to change without notice and is not warranted to be error-free. If you find any errors, please report them to us in writing.

If this is software, software documentation, data (as defined in the Federal Acquisition Regulation), or related documentation that is delivered to the U.S. Government or anyone licensing it on behalf of the U.S. Government, then the following notice is applicable:

U.S. GOVERNMENT END USERS: Oracle programs (including any operating system, integrated software, any programs embedded, installed, or activated on delivered hardware, and modifications of such programs) and Oracle computer documentation or other Oracle data delivered to or accessed by U.S. Government end users are "commercial computer software," "commercial computer software documentation," or "limited rights data" pursuant to the applicable Federal Acquisition Regulation and agency-specific supplemental regulations. As such, the use, reproduction, duplication, release, display, disclosure, modification, preparation of derivative works, and/or adaptation of i) Oracle programs (including any operating system, integrated software, any programs embedded, installed, or activated on delivered hardware, and modifications of such programs), ii) Oracle computer documentation and/or iii) other Oracle data, is subject to the rights and limitations specified in the license contained in the applicable contract. The terms governing the U.S. Government's use of Oracle cloud services are defined by the applicable contract for such services. No other rights are granted to the U.S. Government.

This software or hardware is developed for general use in a variety of information management applications. It is not developed or intended for use in any inherently dangerous applications, including applications that may create a risk of personal injury. If you use this software or hardware in dangerous applications, then you shall be responsible to take all appropriate fail-safe, backup, redundancy, and other measures to ensure its safe use. Oracle Corporation and its affiliates disclaim any liability for any damages caused by use of this software or hardware in dangerous applications.

Oracle®, Java, MySQL, and NetSuite are registered trademarks of Oracle and/or its affiliates. Other names may be trademarks of their respective owners.

Intel and Intel Inside are trademarks or registered trademarks of Intel Corporation. All SPARC trademarks are used under license and are trademarks or registered trademarks of SPARC International, Inc. AMD, Epyc, and the AMD logo are trademarks or registered trademarks of Advanced Micro Devices. UNIX is a registered trademark of The Open Group.

This software or hardware and documentation may provide access to or information about content, products, and services from third parties. Oracle Corporation and its affiliates are not responsible for and expressly disclaim all warranties of any kind with respect to third-party content, products, and services unless otherwise set forth in an applicable agreement between you and Oracle. Oracle Corporation and its affiliates will not be responsible for any loss, costs, or damages incurred due to your access to or use of third-party content, products, or services, except as set forth in an applicable agreement between you and Oracle.

Contents

About This Content

1 System Overview

What is Location Capabilities Pack?	1
Introduction	1
Usage Scenarios	1
Callback and Collect Call Locations	1
Definitions	2
Components	2
Location Module	2
Plug-Ins	3
Provisioning and Management	3
Feature Nodes	3
Overview Diagram	3

2 LCP Administration Screens and Tasks

Overview	1
Introduction	1
Getting Started	1
Accessing LCP	1
Location Capabilities Pack Screen	1
Tabs	2
Deleting a Record	2
Searching for Records	3
Search Example	3
Plug-Ins	4
Introduction	4
Plugins Tab	4
Plugins Tab Fields	5
Plugin Definition Screen	5
Adding a Plug-In Definition	6
Editing a Plug-In Definition	6

Mappings	6
Introduction	6
Mappings Tab	7
Mappings Fields	7
MSISDN Mapping Screen	7
Adding an MSISDN Mapping	8
Editing an MSISDN Mapping	8
Conversions	8
Introduction	8
Conversion Bulk Loader	8
Conversions Tab	9
Conversion Fields	9
Conversion Screen	9
Adding Conversions	10
Editing a Conversion	10
Importing Conversions	10
Import Screen	11
Zones	11
Introduction	11
Configuring Zone Profile Tags	11
Using Zone Profile Tags	12

About This Content

The scope of this document includes all functionality a user must know in order to effectively operate the Oracle Communications Convergent Charging Controller Location Capabilities Pack (LCP) application. It does not include detailed design of the service.

Audience

This guide is written primarily for LCP administrators. However, the overview sections of the document are useful to anyone requiring an introduction.

Although it is not a prerequisite to using this guide, familiarity with the target platform would be an advantage.

This manual describes system tasks that should only be carried out by suitably trained operators.

Documentation Accessibility

For information about Oracle's commitment to accessibility, visit the Oracle Accessibility Program website at <http://www.oracle.com/pls/topic/lookup?ctx=acc&id=docacc>.

Access to Oracle Support

Oracle customers that have purchased support have access to electronic support through My Oracle Support. For information, visit <http://www.oracle.com/pls/topic/lookup?ctx=acc&id=info> or visit <http://www.oracle.com/pls/topic/lookup?ctx=acc&id=trs> if you are hearing impaired.

Related Resources

The following documents are related to this document

- Number Portability Service Pack Technical Guide
- Location Capabilities Pack Technical Guide

Conventions

The following text conventions are used in this document.

Convention	Meaning
boldface	Boldface type indicates graphical user interface elements associated with an action, or terms defined in text or the glossary.
<i>italic</i>	Italic type indicates book titles, emphasis, or placeholder variables for which you supply particular values.
monospace	Monospace type indicates commands within a paragraph, URLs, code in examples, text that appears on the screen, or text that you enter.

1

System Overview

What is Location Capabilities Pack?

Introduction

The Oracle Communications Convergent Charging Controller Location Capabilities Pack (LCP) is a set of software components used by other applications to look up the location of mobile devices.

Usage Scenarios

There are several current and future scenarios for using LCP.

Location-Based Billing

Through location-based billing, a subscriber can establish zones with special billing rates for different zones. Typical example zones are “home” or “work”.

A user or subscriber can set further zones to cover a subscriber’s particular preferences.

Differential billing can be the result of one of the following:

- A call made by a subscriber located in one of their zones
- A call made between subscribers when both are located in one of their zones

Emergency Services

With location-enhanced emergency services, the location information can be used in two different ways:

- To dispatch the closest appropriate authorities
- To relay accurate location information to emergency services

Both help with the speedy arrival to an accurate location.

Tracking

Tracking enables fleet applications (and service companies) to track vehicles so the owning company knows the location of a vehicle or operator.

Note: To provide this service, the operator must offer real-time and accurate tracking functionality.

Callback and Collect Call Locations

You can use LCP to locate a subscriber who is outside of the network. This enables a subscriber who is visiting a foreign network to use callback functionality to establish a roaming call.

To implement this feature, the LCP Store My Location node is used before the final billing node performs the charge.

For more information about callback and collect call features, see *USSD GW Technical Guide*.

Other Possible Scenarios

You can also use LCP for:

- Mobile blind dating (for example, two subscribers who have signed up for this service and are in the same area can arrange to meet up).
- Looking up the nearest service facility (for example, a pharmacy or restaurant).

Definitions

This table describes some important terms used by the LCP:

Button	Function
Zone	A zone is collection of zone shapes. Currently it is used for billing purposes.
Zone Shape	A zone shape is an area of a certain shape (for example: circular, rectangular, etc.). Currently, as these are defined by radius, they can only be circular. Example: A work zone could contain three shapes representing three separate offices or three zone shapes representing one single office with a more complex overall shape.
Zone Type	What the zone represents (for example: home, work).
Location	Position of a subscriber.
Location Server	A location server is the entity that the location services clients query to obtain location information (for example: HLR, GMLC).

Components

The LCP consists of these components:

- Location Module (locApp)
- MAP ATI plug-in
- IS-41 POSREQ plug-in
- SRI-MSRN plug-in
- SRI-IMSI plug-in
- LCP ACS components (four feature nodes and one action handler)
- Database tables
- Management screens

Location Module

The key component of the LCP is the Location Module. The calling application passes the MSISDN of a mobile device to the Location Module. The Location Module looks up the current location of the mobile device and returns its locational reference to the calling application as a Cell ID/ Area ID or as a circle of uncertainty.

Plug-Ins

The Location Module uses modular communication plug-ins to communicate with Location Servers on customer networks. It provides the following plug-ins:

- MAP ATI
- IS-41 POSREQ
- SRI-MSRN
- SRI-IMSI

Provisioning and Management

Additional SMS management screens are delivered as part of the LCP to allow the provisioning and management of locational entities in the database (for example: converting data from Cell ID to circles of uncertainty in X,Y,R format).

Feature Nodes

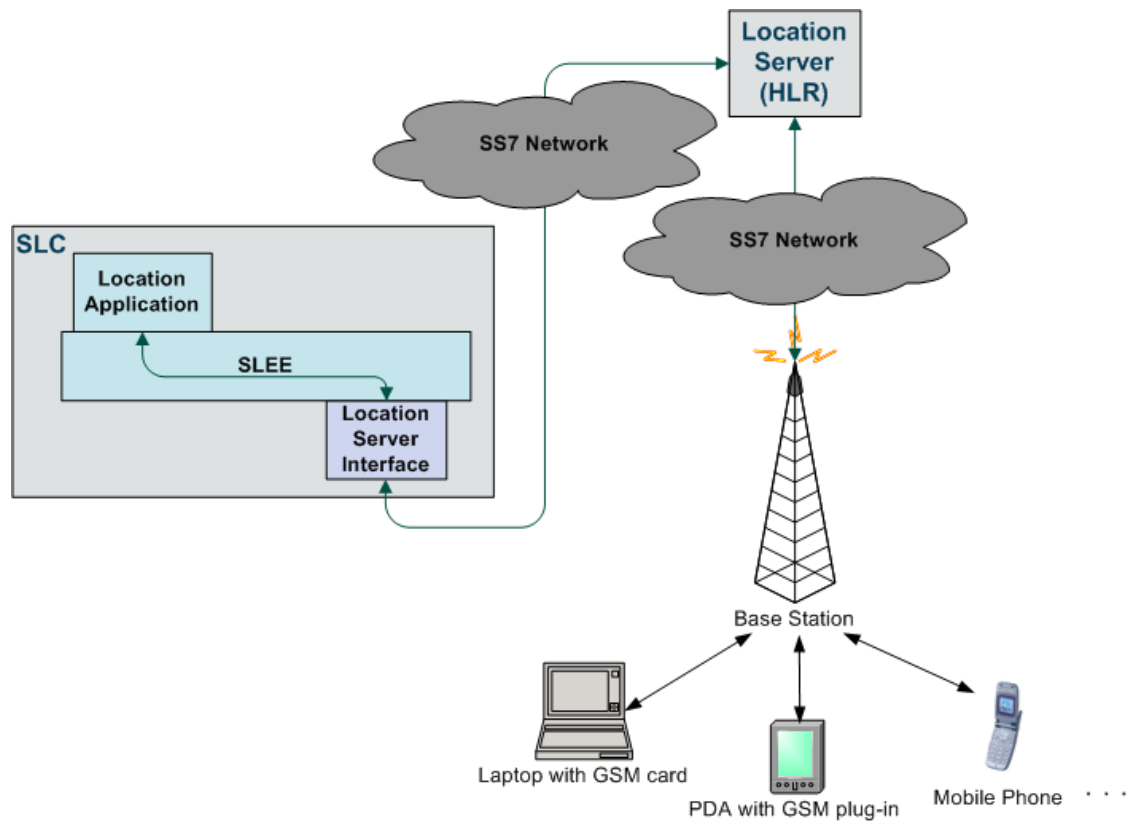
The LCP also enables you to use the Location Module from ACS-based customer applications by providing the following additional feature nodes:

- Set My Zone sets a subscriber's Home and Work zones.
- In The Zone checks if a mobile device is currently in a pre-defined zone.
- Store My Location stores locational data for use by other nodes.
- Store My Network ID stores the IMSI retrieved for a supplied MSISDN.

For more information, see *Feature Nodes Reference Guide*.

Overview Diagram

Here is an overview of how the LCP functions (interaction with the HLR). The Location Application sends location queries to the HLR.



2

LCP Administration Screens and Tasks

Overview


Introduction

This chapter explains the functionality on the Oracle Communications Convergent Charging Controller Location Capabilities Pack screen and other administrative tasks.

Getting Started

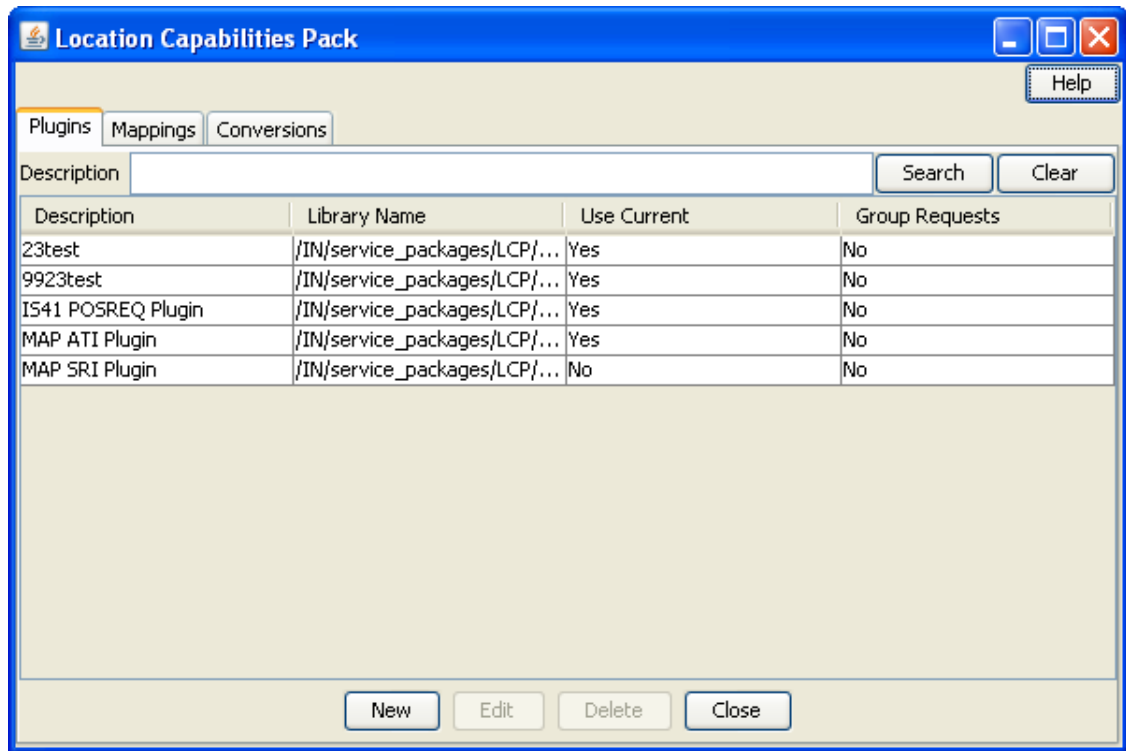
Accessing LCP

Follow these steps to access the Location Capabilities Pack.

Step	Action
1	<p>From the SMS Services menu, select LCP.</p>  <p>Result: You see the Location Capabilities Pack screen.</p>

Location Capabilities Pack Screen

Here is an example Location Capabilities Pack screen.



Tabs

The Location Capabilities Pack screen contains the following tabs:

- *Plug-Ins*
- *Mappings*
- *Conversions*

See *What is Location Capabilities Pack?* for an overview of how these tabs are used in LCP.

Selecting Tabs

Follow these steps to navigate between tabs on a screen.

To...	Press the...
Select a tab title using the mouse	Left mouse button with the cursor placed over the tab title
Navigate across the tab titles	Left or right arrow key (if a tab is already selected)

Navigating between fields and buttons

Follow these steps to navigate between fields and buttons on a tab or screen.

To...	Click...
Navigate to the next field or button	Tab
Save screen changes or activate the selected button	Enter

Deleting a Record

Follow these steps to delete a record from the database.

Step	Action
1	From the table on the tab, select the record to delete. Click Delete . Result: You see the Confirm Deletion dialog.
2	Click Yes to delete the record.

Searching for Records

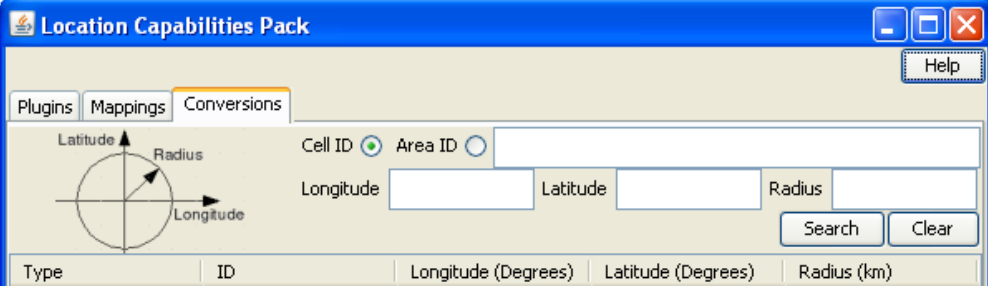
Each tab on the Location Capabilities Pack screen contains a search area. The search area consists of fields in which you can enter search criteria, which returns records matching the criteria in the grid.

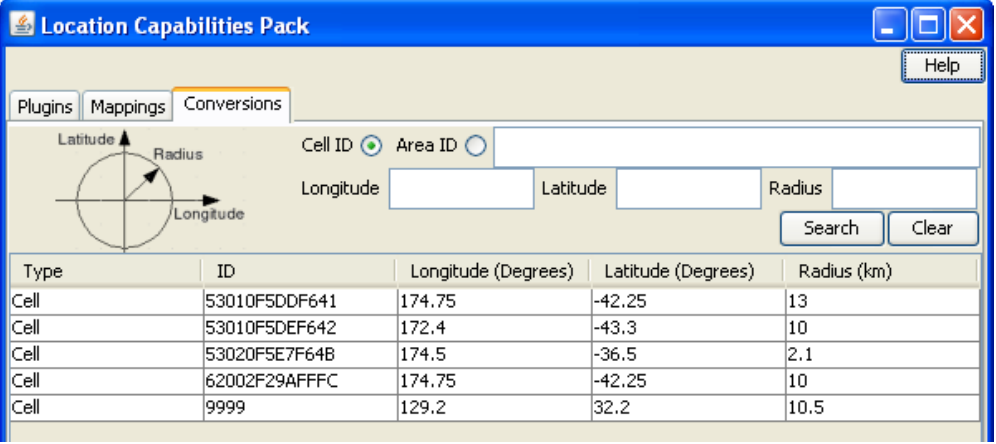
The search facility supports the Oracle wildcard characters:

- % (any character)
- _ (one character)

Search Example

Here is an example search procedure for conversions on the **Conversions** tab.

Step	Action
1	<p>Construct a search query by entering criteria in the fields at the top of the Conversions tab.</p>  <p>The screenshot shows the 'Location Capabilities Pack' application window with the 'Conversions' tab selected. The search area contains a large text field for 'Cell ID' or 'Area ID', and three smaller text fields for 'Longitude', 'Latitude', and 'Radius'. There are radio buttons for 'Cell ID' (selected) and 'Area ID'. Below the search fields are 'Search' and 'Clear' buttons. A diagram of a circle with a radius and coordinate axes is shown on the left. Below the search area is a table with columns: Type, ID, Longitude (Degrees), Latitude (Degrees), and Radius (km).</p> <ul style="list-style-type: none"> • In the top field, enter either the Cell ID or Area ID, depending on which option you have selected to the left of the field. • Longitude: The longitude coordinate to search for. • Latitude: The latitude coordinate to search for. • Radius: The radius to search for.

Step	Action																														
2	<p>To run the search, click Search.</p> <p>Result: Searching for a blank Cell ID returns all of the records in the database.</p>  <p>The screenshot shows the 'Location Capabilities Pack' application window. It has three tabs: 'Plugins', 'Mappings', and 'Conversions'. The 'Conversions' tab is active. On the left, there is a diagram of a circle with axes for Latitude and Longitude, and a radius line. To the right of the diagram are radio buttons for 'Cell ID' (selected) and 'Area ID'. Below these are input fields for 'Longitude', 'Latitude', and 'Radius'. There are 'Search' and 'Clear' buttons. At the bottom, a table displays the search results.</p> <table border="1"> <thead> <tr> <th>Type</th> <th>ID</th> <th>Longitude (Degrees)</th> <th>Latitude (Degrees)</th> <th>Radius (km)</th> </tr> </thead> <tbody> <tr> <td>Cell</td> <td>53010F5DDF641</td> <td>174.75</td> <td>-42.25</td> <td>13</td> </tr> <tr> <td>Cell</td> <td>53010F5DEF642</td> <td>172.4</td> <td>-43.3</td> <td>10</td> </tr> <tr> <td>Cell</td> <td>53020F5E7F64B</td> <td>174.5</td> <td>-36.5</td> <td>2.1</td> </tr> <tr> <td>Cell</td> <td>62002F29AFFFC</td> <td>174.75</td> <td>-42.25</td> <td>10</td> </tr> <tr> <td>Cell</td> <td>9999</td> <td>129.2</td> <td>32.2</td> <td>10.5</td> </tr> </tbody> </table>	Type	ID	Longitude (Degrees)	Latitude (Degrees)	Radius (km)	Cell	53010F5DDF641	174.75	-42.25	13	Cell	53010F5DEF642	172.4	-43.3	10	Cell	53020F5E7F64B	174.5	-36.5	2.1	Cell	62002F29AFFFC	174.75	-42.25	10	Cell	9999	129.2	32.2	10.5
Type	ID	Longitude (Degrees)	Latitude (Degrees)	Radius (km)																											
Cell	53010F5DDF641	174.75	-42.25	13																											
Cell	53010F5DEF642	172.4	-43.3	10																											
Cell	53020F5E7F64B	174.5	-36.5	2.1																											
Cell	62002F29AFFFC	174.75	-42.25	10																											
Cell	9999	129.2	32.2	10.5																											

Note: You can remove all search criteria by clicking **Clear**.

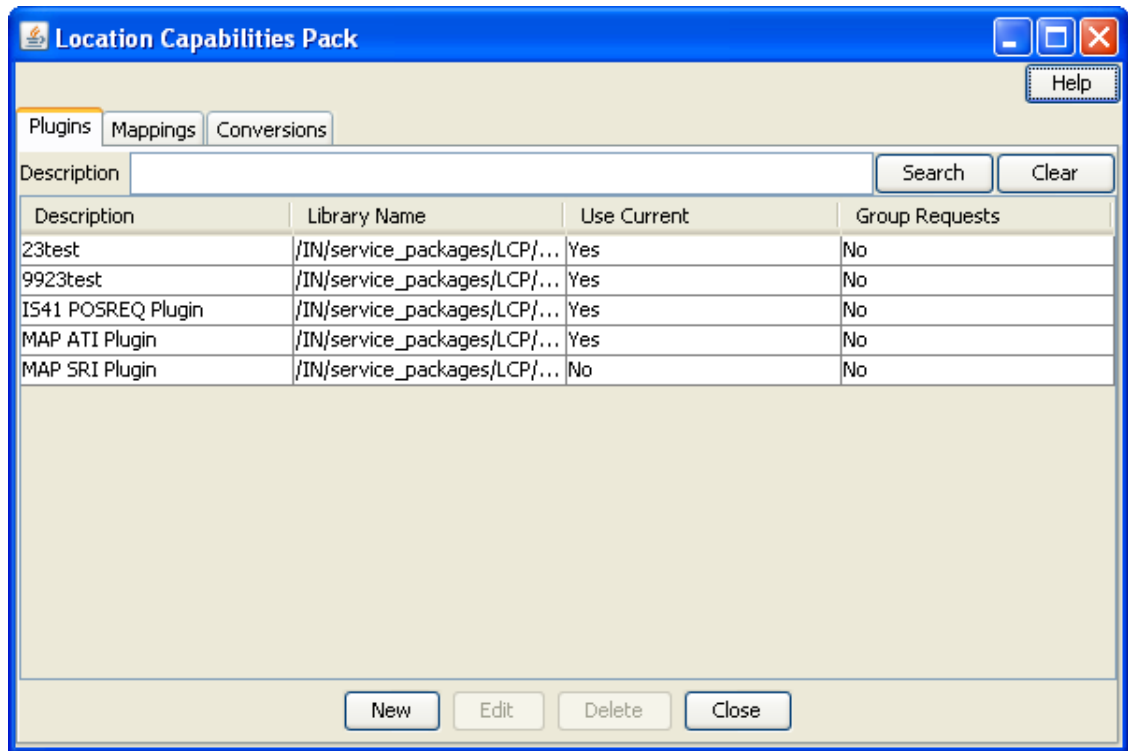
Plug-Ins

Introduction

This **Plugins** tab of the Location Capabilities Pack screen displays the list of existing plug-ins. The table allows a maximum of 10 entries.

Plugins Tab

Here is an example **Plugins** tab.



Plugins Tab Fields

This table describes the function of each field.

Field	Description
Description	Description of this plug-in. This field holds a maximum of 2000 characters.
Library Name	The name of the shared library that contains the location plug-in functionality. Warning: This string must match the filename of the library and that file must be in the LCP's library directory on the SLCs. (The default location is: /IN/service_packages/LCP/lib). This field can hold a maximum of 1024 characters. For more information about the available libraries, see <i>Location Capabilities Pack Technical Guide</i> .
Use Current	Defines whether to use the current location (MAP Cell ID, MAP Geographical Information, or INAP Location Number).
Group Requests	Defines whether to send Grouped Requests. Notes: <ul style="list-style-type: none"> This is only relevant where there is a supported plug-in. Setting to yes, group requests from a macro node to a plug-in to save bandwidth. This functionality is not currently supported in either the macro nodes or the plug-ins, so this field should be set to No. After you save this record, you cannot change this setting.

Plugin Definition Screen

Here is an example Plugin Definition screen.

Adding a Plug-In Definition

Follow these steps to create a plug-in definition.

Step	Action
1	On the Plugins tab of the Locations Capabilities Pack screen, click New . Result: You see the New <i>Plugin Definition</i> screen .
2	Configure this record by entering data in the fields on this screen. For more information about the fields in this screen, see <i>Plugins Tab Fields</i> .
3	Click Save .

Editing a Plug-In Definition

Follow these steps to edit a plug-in definition.

Step	Action
1	From the table on the Plugins tab of the Location Capabilities Pack screen, select the record. Click Edit . Result: You see the Edit <i>Plugin Definition</i> screen .
2	Edit the fields to reflect the changes you need to make. For more information about the fields on this screen, see <i>Plugins Tab Fields</i> . Note: You cannot change the group requests option.
3	Click Save .

Mappings

Introduction

This **Mappings** tab of the Location Capabilities Pack screen displays the list of existing MSISDN mappings.

There are two ways a plug-in is chosen. It is either specified by the LSP client, or if one is not specified, the MSISDN of the mobile station is used to select a plug-in.

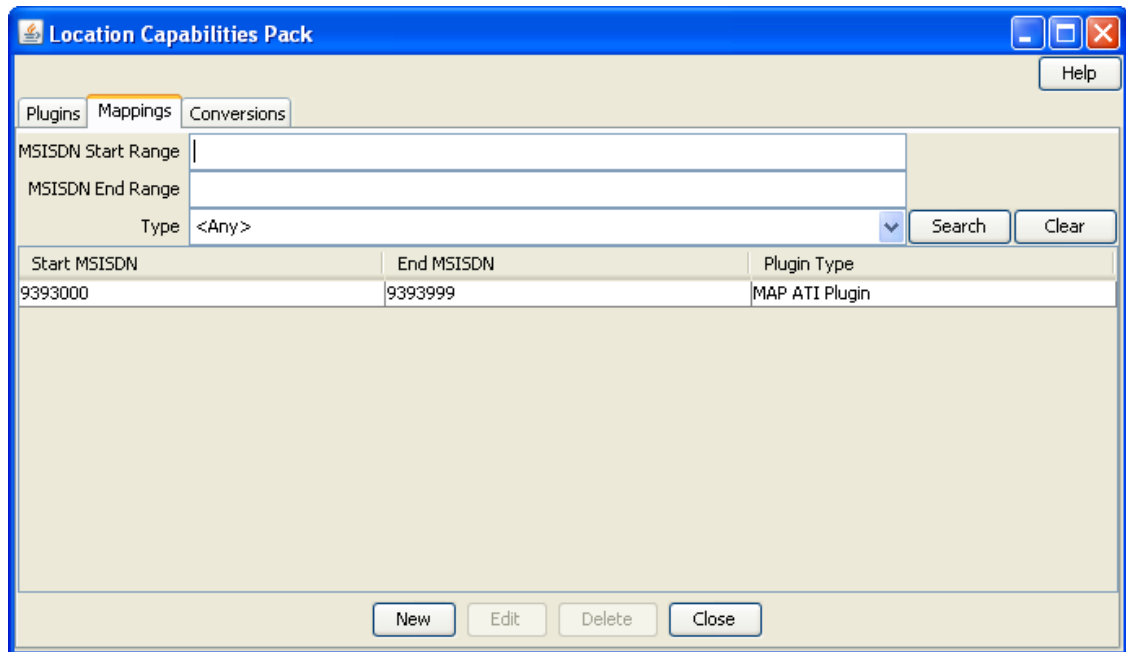
The MSISDN or plug-in selection is determined by using MSISDN ranges. This means that, if the MSISDN of interest falls within the range of a plug-in, the plug-in is used. The MSISDN

ranges must be non-overlapping, that is, no part of the range overlaps with any other MSISDN ranges.

The table allows a maximum of 100 entries.

Mappings Tab

Here is an example **Mappings** tab.



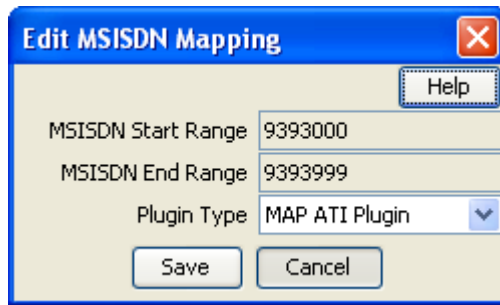
Mappings Fields

This table describes the function of each field.

Field	Description
MSISDN Start Range	Type a start value for the range of MSISDNs that map to the plug-in. Notes: <ul style="list-style-type: none"> Ranges must not overlap with an existing range. After you save the record, the range cannot be modified.
MSISDN End Range	Type an end value for the range of MSISDNs that map to the plug-in. Notes: <ul style="list-style-type: none"> Ranges must not overlap with an existing range. After you save the record, the range cannot be modified.
Plugin Type	Select the plug-in type from the drop-down menu.

MSISDN Mapping Screen

Here is an example MSISDN Mapping screen.



Adding an MSISDN Mapping

Follow these steps to add an MSISDN mapping for a selected plug-in.

Step	Action
1	On the Mappings tab of the Locations Capabilities Pack screen, click New . Result: You see the New <i>MSISDN Mapping</i> screen .
2	Configure this record by entering data in the fields on this screen. For more information about the fields in this screen, see <i>Mappings Fields</i> .
3	Click Save . Result: The record is added to the database.

Editing an MSISDN Mapping

Follow these steps to edit an MSISDN mapping.

Step	Action
1	From the table on the Mappings tab of the Location Capabilities Pack screen, select the record. Click Edit . Result: You see the Edit <i>MSISDN Mapping</i> screen .
2	The only field you can modify is the Plugin Type . For more information about the fields on this screen, see <i>Mappings Fields</i> .
3	Click Save .

Conversions

Introduction

The **Conversions** tab displays the list of existing conversions that match the search criteria. If the search criteria fields are empty, the entire list of conversions is displayed. A circle showing the meaning of the coordinates is shown. The table allows a maximum of 1 million entries.

Conversion Bulk Loader

The Conversion Bulk Loader enables you to load conversion data from text files. Files can contain data for updating by area ID or by cell ID, but not both.

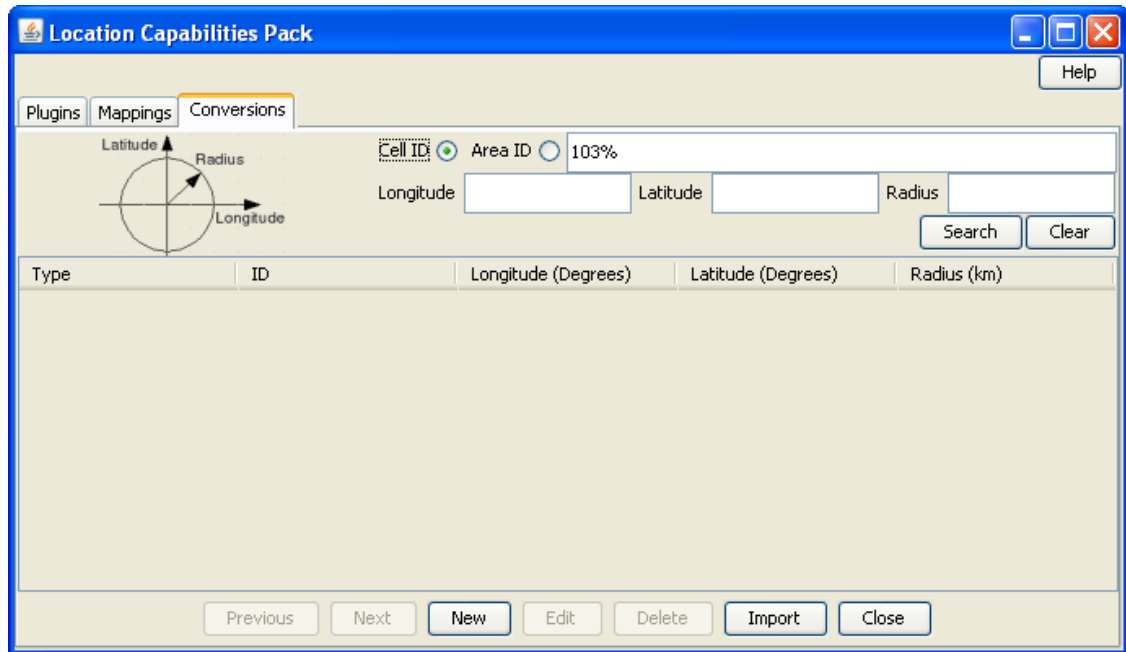
The files can be imported by using one of the following:

- **Conversions** tab of the Location Capabilities Pack screen
- Command line

For details about using the command line and the file format of the text files, see *Location Capabilities Pack Technical Guide*.

Conversions Tab

Here is an example **Conversions** tab.



Conversion Fields

This table describes the function of each field.

Field	Description
Cell ID	The ID of the Cell. Note: This field cannot be changed after it is first saved.
Area ID	The ID of the Area. Note: This field cannot be changed after it is first saved.
Longitude (Degrees)	The longitude coordinate. Restricted to between -179.99999 (W) to 180.00000 (E) degrees (5 decimal places throughout).
Latitude (Degrees)	The latitude coordinate. Restricted to between -90.00000 to 90.00000 degrees (5 decimal places throughout).
Radius (km)	The radius. Restricted to between 0.0000000 and 99999999.9999999 kilometers (7 decimal places throughout).

Conversion Screen

Here is an example Conversion screen.

Adding Conversions

Follow these steps to create a conversion.

Step	Action
1	On the Conversions tab of the Locations Capabilities Pack screen, click New . Result: You see the <i>New Conversion screen</i> .
2	Click either the Cell ID or Area ID and type the ID in the field beside the selection. Note: After you save this record, you cannot change this setting.
3	Fill in the coordinates. For more information about these fields, see <i>Conversion Fields</i> .
4	Click Save .

Editing a Conversion

Follow these steps to edit a conversion.

Step	Action
1	From the table on the Conversions tab of the Location Capabilities Pack screen, select the record. Click Edit . Result: You see the <i>Edit Conversion screen</i> .
2	Edit the fields to reflect the changes you need to make. For more information about the fields in this screen, see <i>Conversion Fields</i> .
3	Click Save .

Importing Conversions

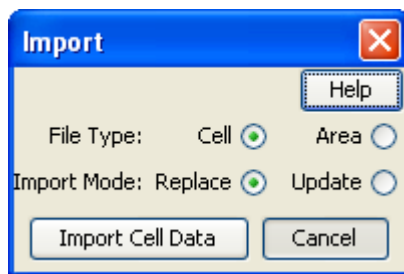
Follow these steps to import conversions.

Step	Action
1	On the Conversions tab of the Location Capabilities Pack screen, click Import . Result: The <i>Import screen</i> is displayed.
2	Specify the file type to import. Select one of the following: <ul style="list-style-type: none"> • Cell • Area

Step	Action
3	Specify the import mode. Select one of the following: <ul style="list-style-type: none"> • Replace – Insert into an empty database or replace all existing data • Update – Update the existing data
4	Select one of the following: <ul style="list-style-type: none"> • Import Cell Data • Import Area Data Result: The Import screen reflects your selection of options.
5	Browse to the file to import. Click the import button, for example, Import Cell Data (Replace) . Result: If successful, you see a dialog displaying the location of log files to check and delete after inspection.
6	Click OK . Result: The database is updated.

Import Screen

Here is an example Import screen.



Zones

Introduction

Zones can be used to determine the location of a Subscriber for the purpose of differential billing and/or providing location-based services.

The Location Capabilities Pack uses ZONE profile tags configured in ACS to define a set of zones. These profile tags are defined on the **Profile Tag Details** tab on the ACS Configuration screen.

Configuring Zone Profile Tags

You can define a set of zones that can be used to determine the location of a subscriber.

To define a zone, you must first define the zone profile group field using a ZONE profile tag.

ZONE profile tags are configured in ACS. The LCP ZONE profile tags, Home and Work, are all configured at installation. All other zone profile tags are user defined and must conform to the configuration shown in this table.

Profile Tag Name	Profile Tag Type	Profile Tag	Parent Profile Tag	Comment
LCP ZONES	Profile Block	4128769		Configured during installation.
Home	ZONE	4128770	4128769	Configured during installation.
Work	ZONE	4128771	4128769	Configured during installation.
<i>ZoneName</i>	ZONE	An integer value in the range: 4128772 to 4194305	4128769	User defined. Warning: The parent profile tag must be set to 4128769 (the profile tag value for LCP ZONES).

For more information about profile tags, see *ACS User's Guide*.

Using Zone Profile Tags

The LCP ZONE profile tags defined on the ACS Configuration screen are used by the LCP In The Zone feature node and Set My Zone feature node to access or update zone type values from within a control plan.

For more information about:

- LCP feature nodes, see *Feature Nodes Reference Guide*
- A specific node, click the **Help** button in the feature node's configuration window