

Oracle® Communications

EAGLE FTP Table Base Retrieval Software

Installation Guide



Release 5.0

F56390-01

April 2022

ORACLE®

Copyright © 2003, 2022, Oracle and/or its affiliates.

This software and related documentation are provided under a license agreement containing restrictions on use and disclosure and are protected by intellectual property laws. Except as expressly permitted in your license agreement or allowed by law, you may not use, copy, reproduce, translate, broadcast, modify, license, transmit, distribute, exhibit, perform, publish, or display any part, in any form, or by any means. Reverse engineering, disassembly, or decompilation of this software, unless required by law for interoperability, is prohibited.

The information contained herein is subject to change without notice and is not warranted to be error-free. If you find any errors, please report them to us in writing.

If this is software or related documentation that is delivered to the U.S. Government or anyone licensing it on behalf of the U.S. Government, then the following notice is applicable:

U.S. GOVERNMENT END USERS: Oracle programs (including any operating system, integrated software, any programs embedded, installed or activated on delivered hardware, and modifications of such programs) and Oracle computer documentation or other Oracle data delivered to or accessed by U.S. Government end users are "commercial computer software" or "commercial computer software documentation" pursuant to the applicable Federal Acquisition Regulation and agency-specific supplemental regulations. As such, the use, reproduction, duplication, release, display, disclosure, modification, preparation of derivative works, and/or adaptation of i) Oracle programs (including any operating system, integrated software, any programs embedded, installed or activated on delivered hardware, and modifications of such programs), ii) Oracle computer documentation and/or iii) other Oracle data, is subject to the rights and limitations specified in the license contained in the applicable contract. The terms governing the U.S. Government's use of Oracle cloud services are defined by the applicable contract for such services. No other rights are granted to the U.S. Government.

This software or hardware is developed for general use in a variety of information management applications. It is not developed or intended for use in any inherently dangerous applications, including applications that may create a risk of personal injury. If you use this software or hardware in dangerous applications, then you shall be responsible to take all appropriate fail-safe, backup, redundancy, and other measures to ensure its safe use. Oracle Corporation and its affiliates disclaim any liability for any damages caused by use of this software or hardware in dangerous applications.

Oracle, Java, and MySQL are registered trademarks of Oracle and/or its affiliates. Other names may be trademarks of their respective owners.

Intel and Intel Inside are trademarks or registered trademarks of Intel Corporation. All SPARC trademarks are used under license and are trademarks or registered trademarks of SPARC International, Inc. AMD, Epyc, and the AMD logo are trademarks or registered trademarks of Advanced Micro Devices. UNIX is a registered trademark of The Open Group.

This software or hardware and documentation may provide access to or information about content, products, and services from third parties. Oracle Corporation and its affiliates are not responsible for and expressly disclaim all warranties of any kind with respect to third-party content, products, and services unless otherwise set forth in an applicable agreement between you and Oracle. Oracle Corporation and its affiliates will not be responsible for any loss, costs, or damages incurred due to your access to or use of third-party content, products, or services, except as set forth in an applicable agreement between you and Oracle.

Contents

1 Introduction

Overview	1-1
Software Release Numbering	1-1
User Guide Conventions	1-1
References	1-2

2 Hardware and Software Requirements

3 Software Installation

Overview	3-1
FTRA Software Installation on Windows	3-1
FTRA Software Installation on Linux	3-8
Java Runtime Environment Installation	3-9
Windows FTRA release 4.x or later upgrade	3-9

My Oracle Support (MOS)

[My Oracle Support \(MOS\)](#) is your initial point of contact for any of the following requirements:

- **Product Support:**
The generic product related information and resolution of product related queries.
- **Critical Situations**
A critical situation is defined as a problem with the installed equipment that severely affects service, traffic, or maintenance capabilities, and requires immediate corrective action. Critical situations affect service and/or system operation resulting in one or several of these situations:
 - A total system failure that results in loss of all transaction processing capability
 - Significant reduction in system capacity or traffic handling capability
 - Loss of the system's ability to perform automatic system reconfiguration
 - Inability to restart a processor or the system
 - Corruption of system databases that requires service affecting corrective actions
 - Loss of access for maintenance or recovery operations
 - Loss of the system ability to provide any required critical or major trouble notification

Any other problem severely affecting service, capacity/traffic, billing, and maintenance capabilities may be defined as critical by prior discussion and agreement with Oracle.
- **Training Need**
Oracle University offers training for service providers and enterprises.

My Oracle Support (<https://support.oracle.com>) is your initial point of contact for all product support and training needs. A representative at Customer Access Support can assist you with My Oracle Support registration.

Call the Customer Access Support main number at 1-800-223-1711 (toll-free in the US), or call the Oracle Support hotline for your local country from the list at <http://www.oracle.com/us/support/contact/index.html>. When calling, make the selections in the sequence shown below on the Support telephone menu:

- For Technical issues such as creating a new Service Request (SR), select **1**.
- For Non-technical issues such as registration or assistance with My Oracle Support, select **2**.
- For Hardware, Networking and Solaris Operating System Support, select **3**.

You are connected to a live agent who can assist you with My Oracle Support registration and opening a support ticket.

My Oracle Support is available 24 hours a day, 7 days a week, 365 days a year.

What's New in This Guide

Release 5.0 - April 2022

This section introduces the documentation updates for Release 5.0 in Oracle Communications EAGLE FTP Table Based Retrieval (FTRA).

- Updated Java [™] Runtime Environment (JRE) version throughout the document.
- Updated GUI screenshots for FTRA Software Installation on Windows. For more information, see [FTRA Software Installation on Windows](#).

Acronyms

The alphabetized list of acronyms used in the document:

Table Acronyms

Acronyms	Definition
CDE	Common Desktop Environment
FTRA	FTP-Based Table Retrieve Application
STP	Signal Transfer Point
GUI	Graphical User Interface
OTN	Oracle Technology Network

1

Introduction

This document provides information about how to install FTP-Based Table Retrieve Application.

Overview

The FTP-Based Table Retrieve Application (FTRA) was designed in conjunction with the FTP Retrieve and Replace feature to transfer EAGLE database tables to a remote server for offline processing by using an FTP session. The FTRA is a stand-alone application that interfaces with one or more Signal Transfer Points (STPs). The FTRA can read database tables from the selected EAGLE node using the retrieve commands. The EAGLE converts the output of these retrieve commands into CSV (comma separated value) format files that FTRA ultimately collects. The FTRA also uses a local list of EAGLE commands. FTRA reads the contents of the commands file, validates the commands, and finally uses the commands to collect data from the selected STP. FTRA also collects logs for event tracking and displaying error messages.

The FTRA provides the following functionalities through a Graphical User Interface (GUI):

- Configuration of STP Connections
- Testing of STP Connectivity
- Configuration of FTP Server
- Retrieving the EAGLE database tables from multiple STPs manually or automatically, using the command-line interface, with the results converted to CSV files
- Validation of command files before sending them to the STP
- Command file editing
- Display of log files for event tracking and displaying error messages

Software Release Numbering

To identify the components that comprise the product's software release, see the Engineering Release Notes or other documents with the most recent build numbers.

User Guide Conventions

To differentiate between references to objects, actions, literal entries, and user-supplied information, the following conventions are used in this user guide:

Menu selections and buttons are shown in bold, and the steps in a menu path are represented with ">". For example:

Select **Edit > STP Connection Configuration** from the menu.

The **Add** button is not enabled when the **STP Connection Configuration** menu opens.

Commands and entries in this document are shown in 10 point Courier bold font. For example:

Using a text editor (such as Notepad), add the following lines to the AUTOEXEC.BAT file:

```
SETFTRA_HOME="C:\<download_directory>"
```

```
SETJRE_HOME="C:\Program Files\Java\<Java bin directory>"
```

User-specific information is shown in italics and enclosed in "<>". For example, download directory is represented as <download_directory> in the previous example.

References

Following are the reference documents:

- *Oracle Communications EAGLE System Health Check Guide*
- *Oracle Communications EAGLE Maintenance Guide,*
- *Oracle Communications EAGLE Database Administration - System Management User Guide,*

2

Hardware and Software Requirements

This chapter explains the Hardware and Software requirements needed to run an offline application on Windows or Linux platforms.

For Windows workstation, the following hardware and software must be installed:

- Windows® 2000/XP¹, Windows 7 Professional, Windows Server 2008 R2 or Windows 10 Professional
- CPU: Pentium III 750MHz or faster
- RAM – Minimum 128 MB
- Disk Space – Minimum 500 MB + 500 MB per STP
- CD-ROM drive
- 10/100BaseT Ethernet connection to the LAN
- Static IP addressing
- Java™ Runtime Environment (JRE) 1.8 or latest available



Note:

Windows 98 and Windows NT support is discontinued.³

For Linux workstation, the following hardware and software must be installed:

- CPU: Pentium III
- Processor speed - 750 MHz or faster
- RAM - Minimum 512 MB
- Disk Space - Minimum 500 MB + 500 MB per STP
- CD-ROM drive
- 10/100BaseT Ethernet connection to the LAN
- Static IP addressing
- Java™ Runtime Environment (JRE) 1.8² or latest available

¹ Windows is a registered trademark of Microsoft Corporation in the United States of America and/or other countries.

² Oracle and Java are registered trademarks of Oracle and/or its affiliates. Other names may be trademarks of their respective owners. FTRA and Java are separate products, but FTRA requires Java to operate.

³ Windows Vista is not supported.

3

Software Installation

This chapter explains the different procedures to install FTRA software on Windows and LINUX platforms.

Overview

You can install and upgrade the FTRA either locally or remotely through LAN. Since FTRA is a Java™ based application, you need to install Java™ Runtime Environment on your machine. In case if the Java™ Runtime Environment is already available on your machine, then the installation and upgrade of FTRA can complete in 5-10 minutes. In case if the Java™ Runtime Environment is unavailable on your machine, and you are downloading the Java™ Runtime Environment software from Oracle's website, the installation and upgrade of FTRA can take 30-90 minutes(depending upon the download speed of your internet connection). The FTRA will not provide service during this time. If you are upgrading the FTRA, it will not be necessary to recreate directories or environment variables that already exist.

You can install FTRA software as follows:

- For Release 4.4 and earlier, an FTRA CD may be provided
- For Release 4.5 and later, the FTRA software may be distributed through a downloaded zip file obtained from <https://edelivery.oracle.com>

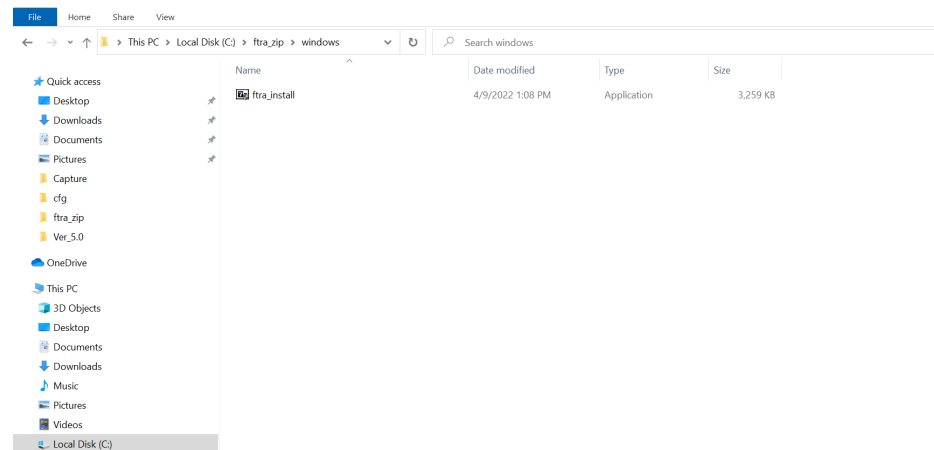
If you are installing the FTRA software for the first time, perform one of the following procedures:

- FTRA Software Installation on Windows [FTRA Software Installation on Windows](#)
- FTRA Software Installation on Linux [FTRA Software Installation on Linux](#)

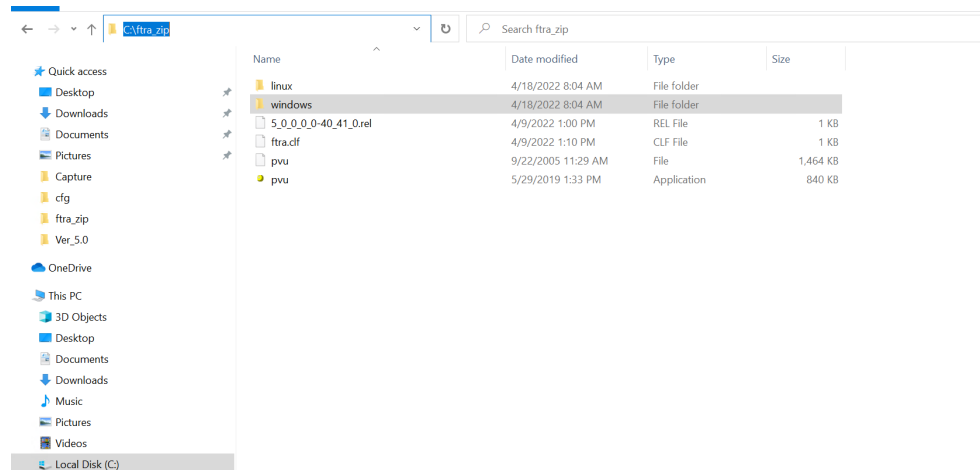
To upgrade FTRA software, see, [Windows FTRA release 4.x or later upgrade](#).

FTRA Software Installation on Windows

1. If you are installing FTRA using an FTRA CD, place the FTRA CD in the CD-ROM drive.
 - a. To see the contents of the FTRA CD, double click the **My Computer** icon on the Desktop of your computer that opens Windows Explorer
 - b. Click on the **Folders** tab at the top of the Windows Explorer menu to display the drives in your system.
 - c. Select the CD Drive by clicking on it to display the contents of the CD as shown in Figure 1.

Figure 3-1 Exploring the FTRA 4.X CD Using Windows Explorer

2. If you are installing FTRA from the downloaded zip file, perform the following steps:
 - a. Create a new folder to copy and unzip the FTRA zip file into it :
 - i. Select the **C: drive**.
 - ii. Right click and select **New -> Folder** as shown in Figure 2, and rename it **ftra_zip**.
 - b. Copy the downloaded FTRA zip file to the ftra_zip folder and unzip the file to the same directory.

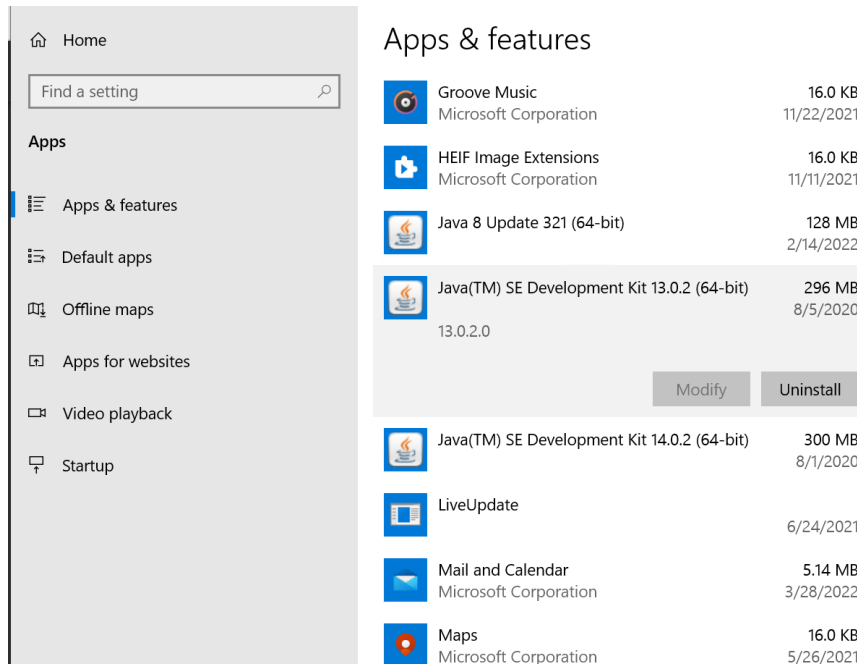
Figure 3-2 Exploring the FTRA 4.X Zip File Using Windows Explorer

3. Install the Java™ 2 Runtime Environment, Standard Edition from the CD or ftra_zip directory.
You may not need to install the Java™ 2 Runtime Environment, Standard Edition Version 1.8 if it is already installed on your machine.

To check the programs installed on your machine, go to **Start->Settings->Control Panel ->Add or Remove Programs**. That action will display all the programs that are installed on your machine.

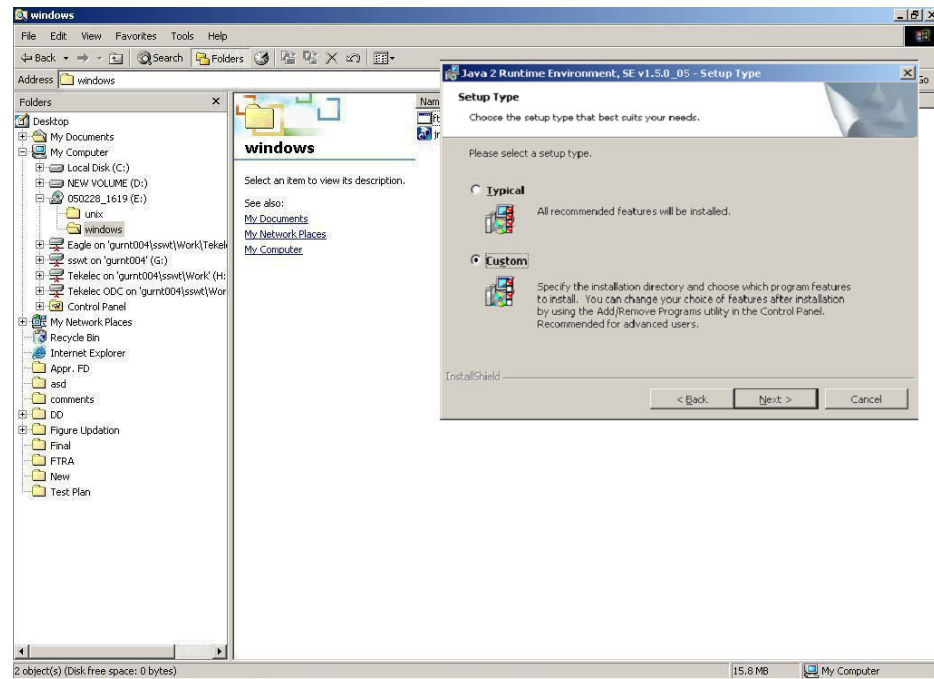
- a. If the Java™ 2 Runtime Environment, Standard Edition Version 1.8 is already installed on your machine (as shown in Figure 3), go to Step 5.
- b. If the Java™ 2 Runtime Environment Standard Edition Version 1.8 software is not installed on your machine, go to Step 4.

Figure 3-3 Adding or Removing Program Window



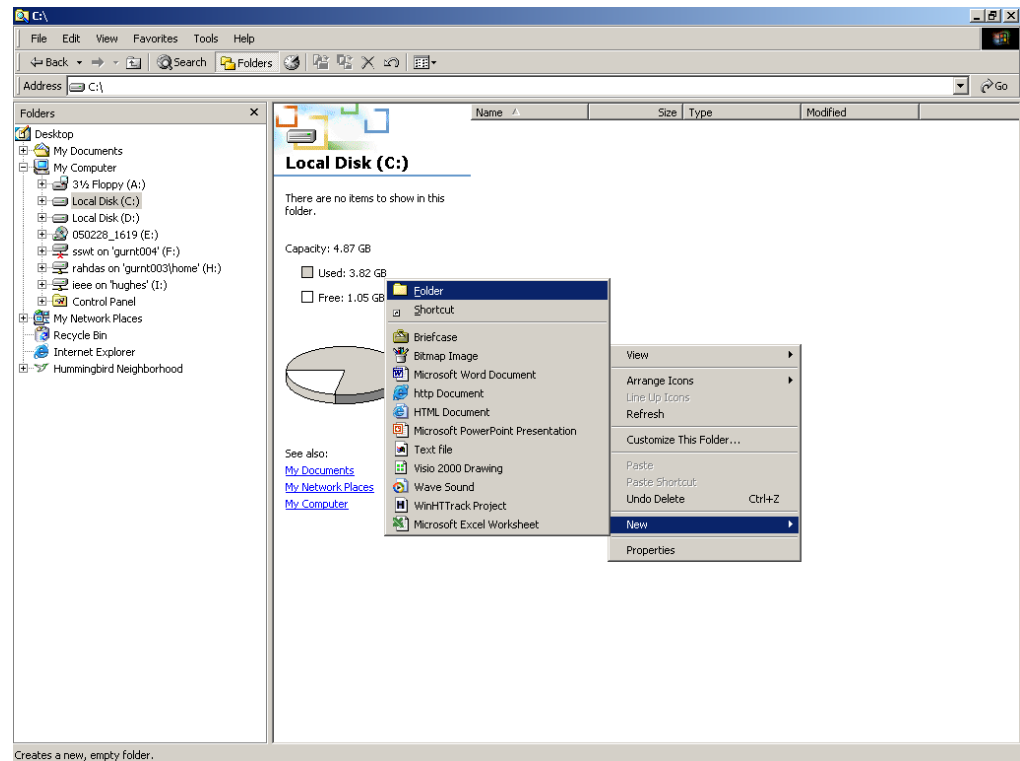
4. To install the Java™ 2 Runtime Environment software on your machine, perform the following steps:
 - a. Select the CD Drive on your machine or select the fra_zip directory.
 - b. Select the Windows folder by double clicking it. The executable files required for the FTRA installation are displayed.
 - c. Double-click on the Java™ 2 Runtime Environment, Standard Edition installable icon in the Windows folder. The InstallShield Wizard opens. **For JRE 1.8, click on jre-7u45-windows-i586.exe.**
 - d. Follow the InstallShield Wizard instructions. Click the **Yes** or **Next** buttons in the InstallShield Wizard to proceed with the installation procedure.
 - e. The InstallShield wizard asks to choose the destination location for the installation of the Java™ 2 Runtime Environment, Standard Edition only when custom installation is selected. Change it by clicking the Change button, or use the default path given by the wizard. Make a note of this path for further use in Step 8.

Figure 3-4 Selecting a Custom Installation



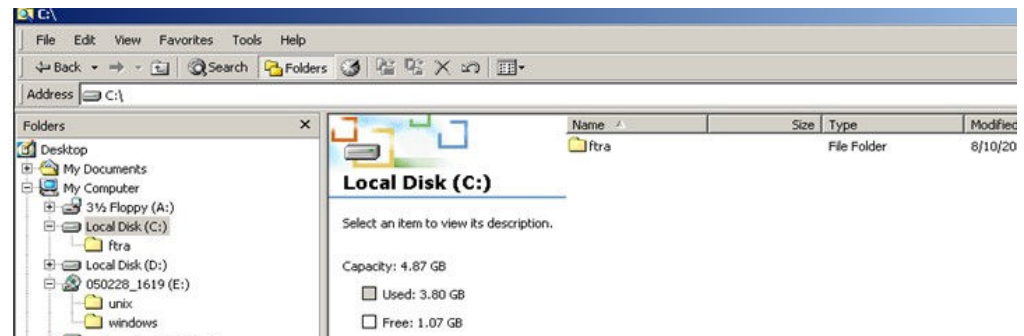
5. Create a folder on your computer for installing the FTRA package (the <base_directory>), for example, C:/ftra.
The new folder can be created on any drive on your computer. Perform these steps to create the folder. For this example, a new folder named **ftra** is created on the **C:Drive**.
 - a. Select the **C:Drive** from Windows Explorer.
 - b. Right click and select **New, Folder** as shown in following figure. This will create a folder with the name **New Folder**.

Figure 3-5 Creating New Folder for FTRA Installation



- c. Rename this folder to **ftra** as shown in following figure.

Figure 3-6 Renaming New Folder to ftra



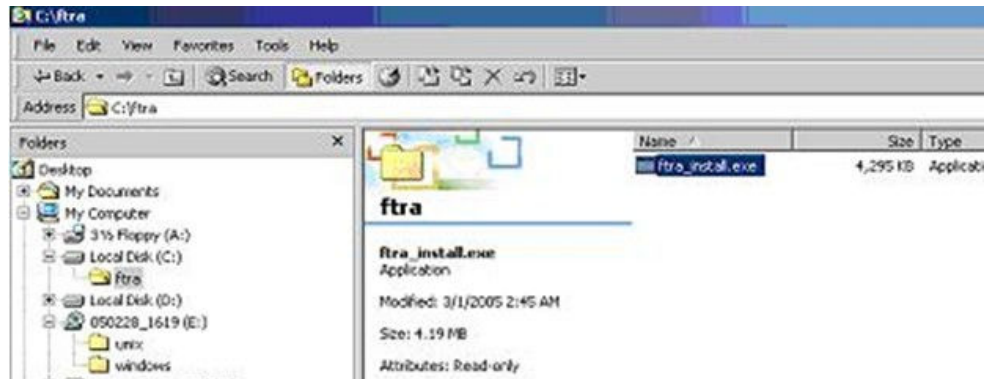
 **Note:**

If you are upgrading FTRA and a previous installation of the software exists inside the `ftra` folder, choose a different name for your `<base_directory>` or else choose to remove or rename your previous FTRA installation.

6. To copy `ftra_install.exe` file from the FTRA CD or the `ftra_zip` directory to the `<base_directory>`, perform the following steps:
 - a. In Windows Explorer, select the CD Drive or the `ftra_zip` folder on your machine and go to the Windows folder.

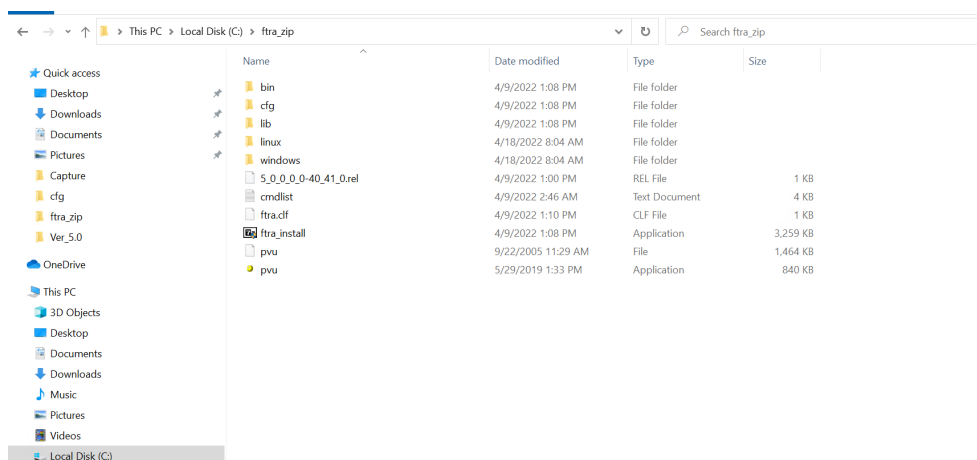
- b. Copy `ftra_install.exe` file from the Windows folder to the `<base_directory>` directory as shown in following figure.

Figure 3-7 Copying the ftra_install.exe File



7. Extract the FTRA files using Command Prompt only. Do not use Windows Explorer window to extract the FTRA program files.
 - a. Open the Windows command prompt.
 - b. Change directory to the FTRA `<base_directory>`.
 - c. Extract the FTRA program files in `<base_directory>` as shown in Figure 8.
 - i. If your FTRA installation is version 4_5_0_0_0-40_34_0 or later, enter the following command:
ftra_install.exe
 - ii. If your FTRA installation is version 4_5_0_0_0-40_33_0 or earlier, enter the following command:
ftra_install.exe -d

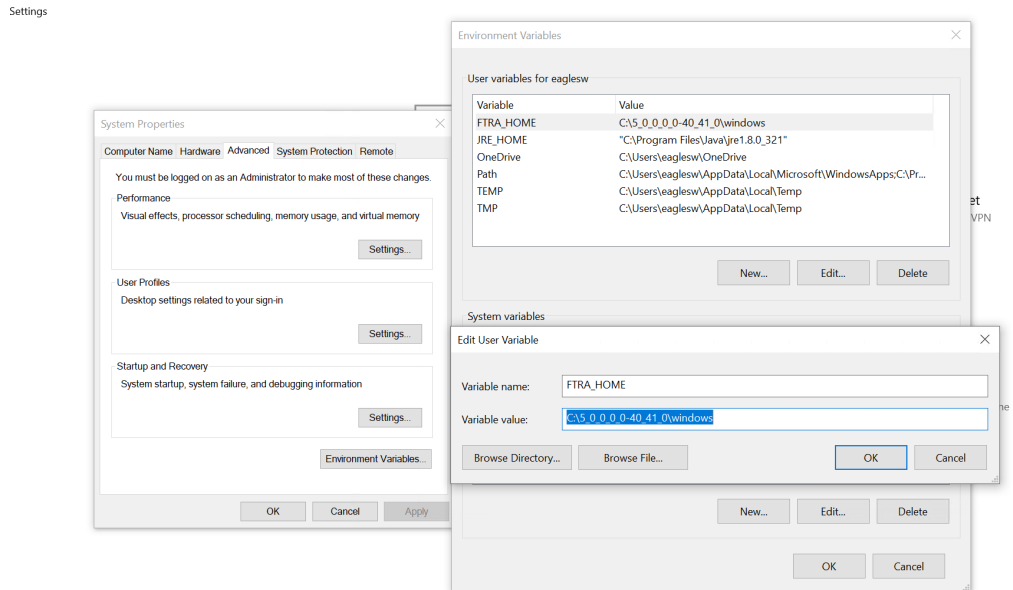
Figure 3-8 Extracting the FTRA Program Files Using the Command Prompt



8. Set the system or user environment variables `FTRA_HOME` & `JRE_HOME`.
 - a. Right-click the **My Computer** icon on the desktop and select **Properties**.

- b. In the **Advanced** tab, click **Environment Variables** and then click **New** as shown in Figure 9.
- c. Under *User variables*, enter the following variable names and their values.
FTRA_HOME = C:\<base_directory created for FTRA> (typically C:\ftra)
JRE_HOME = C:\Program Files\Java\<jre path> (typically, the folder where Java is installed, and the Java path information recorded in Step 3).

Figure 3-9 Setting the Environment Variables



 **Note:**

If the directory name has spaces or is over eight characters long, the DOS short name may be required to define the environment variable. For example, using the JRE_HOME environment variable above, you can define the variable as "C:\Progra~1\Java\<jre path>" (without the quotes) with maximum of eight characters for the directory name.

9. Create an FTRA shortcut on your desktop:
 - a. Using Windows Explorer, open the <base_directory>\bin folder.
 - b. Right click on the *ftra.bat* file and then select **Send To->Desktop (Create Shortcut)** as shown in Figure 10. This will create the shortcut to FTRA on the desktop.

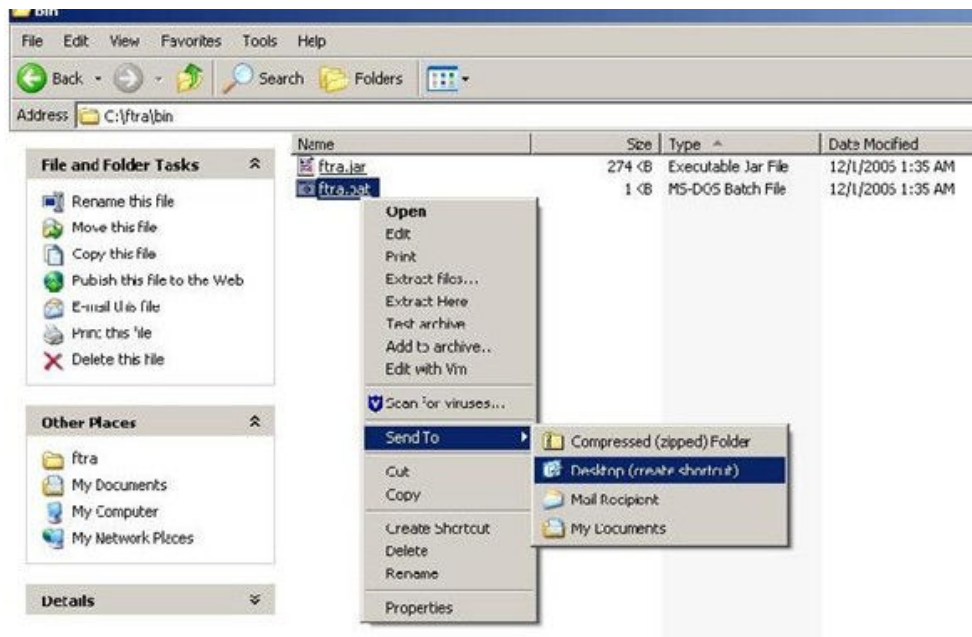
 **Note:**

For a new installation of FTRA Release 4.x, the bin folder will contain the ftra.jar and ftra.bat files only as shown in following figure.

 **Note:**

Place the shortcut either in the Default User or in All Users desktop folder on the multi-user systems in order to make it available to all users.

Figure 3-10 Creating a Shortcut to FTRA



FTRA Software Installation on Linux

1. Place the FTRA CD in the CD-ROM drive if the software needs to be installed from a CD; or if the FTRA software is downloaded as a zip file, create a temporary directory and copy the downloaded FTRA zip file to it. Unzip the contents into that temporary directory. Place the FTRA CD in the CD-ROM drive if the software needs to be installed from a CD. Create a temporary directory if the FTRA software needs to be downloaded as a zip file. Copy the downloaded FTRA zip file and unzip the contents into that temporary directory.
2. Check whether Java is already installed in your computer. Check the version of the Java 2 Runtime Environment installed by using the command **java -version**.

If the Java 2 Runtime Environment Standard Edition Version 1.8 is already installed in your computer, go to Step 4.

3. Java Runtime Environment Installation
 - a. To install the Java 2 Runtime Environment, Standard Edition from the CD, open **FileManager** and go to the CDROM drive. Follow the instructions in the [Java Runtime Environment Installation](#) procedure to install the Java 2 Runtime Environment Standard Edition Version 1.8.
 - b. To install the Java Runtime Environment from the web, go to <http://java.sun.com/products/archive> and follow the instructions provided there.

4. Create an <install_directory> to install the FTRA software into. The preferred location to install the FTRA software is <HOME_DIRECTORY>/ftra, but you can place it wherever you would prefer. Open **FileManager** and go to the preferred location. From **FileManager**, select **File > New Folder** and rename it **ftra**. Copy the file ftra_install.tar from the FTRA CD or the temporary zip location to the new <install_directory> (for example, <HOME_DIRECTORY>/ftra).
Note: You can identify the HOME_DIRECTORY with the command “echo \$HOME”.
5. Extract the files using command **tar -xvzf ftra_install.tar**
6. To display the environment settings, use the following commands:
echo \$FTRA_HOME
echo \$JRE_HOME
An example of the output is:
echo \$FTRA_HOME:
<ftra_install_directory> (for example, <HOME_DIRECTORY>/ftra)
echo \$JRE_HOME:
<jre_install_directory> (for example, /usr/java)
If FTRA_HOME is already set to <HOME_DIRECTORY>/ftra and JRE_HOME is set to <jre_install_directory>, go to step 8.
7. Set the required environment variables by using **export** command from the shell prompt:
export FTRA_HOME=<ftra_install_directory> (for example, <HOME_DIRECTORY>/ftra)
export JRE_HOME=<jre_install_directory>
8. Change to the FTRA bin directory to run FTRA. (for example, <cd/ftra/bin>)
Run FTRA by entering the following command:
./ftra

Java Runtime Environment Installation

To install the Java Runtime Environment, see section [Java Runtime Environment Installation](#).

Windows FTRA release 4.x or later upgrade

1. Place the FTRA CD in the CD-ROM drive; or if the FTRA software is being delivered through the downloaded zip file, create a temporary directory to copy the downloaded FTRA zip file. Unzip the contents into that temporary directory.
2. From Windows Explorer, copy the ftra_install.exe file from the FTRA_CD or from the temporary zip location to the existing <base_directory> directory (see step 4 of the [FTRA Software Installation on Windows](#), procedure for details about the <base_directory>).
3. Extract the FTRA file(s) to the existing <base_directory>, using Command Prompt only. Do not use a Windows Explorer window for the extraction.
From Windows command line, enter the ftra_install.exe -d command. This will create the sub-directories and extract the program files into the existing <base_directory>.

 **Note:**

Answer “yes”, when asked to overwrite an existing file.

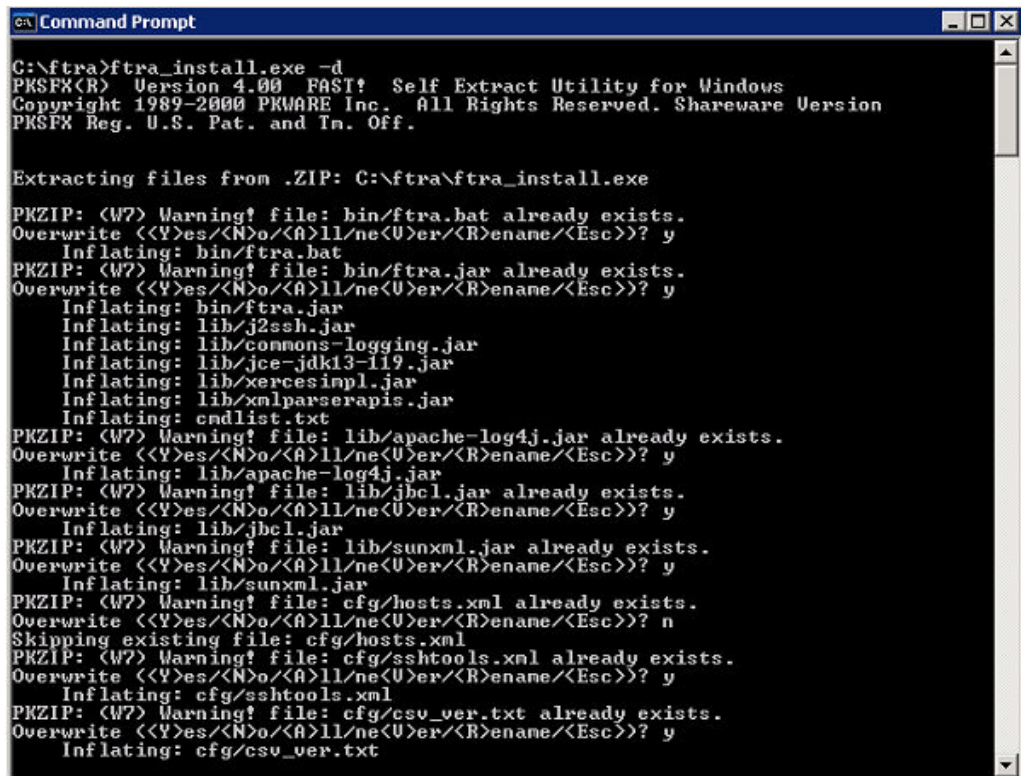
Follow the below recommendations when asked about overwriting hosts.xml

- **For FTRA release 4.x till 4.4** - If some host entries were previously provisioned in hosts.xml file that need to be retained, answer “no” when asked to overwrite the hosts.xml file. Figure 11 shows the selection of “no” option for hosts.xml file.
- **For FTRA release 4.5 or later** – It is mandatory to answer “yes” when asked to overwrite hosts.xml file.

FTRA Release 4.x or later has been installed.

4. Start the FTRA software. See the “FTRA Initialization” section in the FTP-Based Table Retrieve Application (FTRA) User Guide for more information on starting the FTRA software. The existing FTRA STP Connection Configuration data will automatically be converted during the FTRA system initialization.

Figure 3-11 Upgrading to FTRA Release 5.0 from FTRA Release 4.x



```

C:\ftra>ftra_install.exe -d
PKSF(R) Version 4.00 FAST! Self Extract Utility for Windows
Copyright 1989-2000 PKWARE Inc. All Rights Reserved. Shareware Version
PKSF Reg. U.S. Pat. and In. Off.

Extracting files from .ZIP: C:\ftra\ftra_install.exe
PKZIP: (W7) Warning! file: bin/ftra.bat already exists.
Overwrite <<Y>es/<N>o/<A>ll/ne<U>er/<R>ename/<Esc>>? y
Inflating: bin/ftra.bat
PKZIP: (W7) Warning! file: bin/ftra.jar already exists.
Overwrite <<Y>es/<N>o/<A>ll/ne<U>er/<R>ename/<Esc>>? y
Inflating: bin/ftra.jar
Inflating: lib/j2ssh.jar
Inflating: lib/commons-logging.jar
Inflating: lib/jce-jdk13-119.jar
Inflating: lib/xercesimpl.jar
Inflating: lib/xmlparserapis.jar
Inflating: endlist.txt
PKZIP: (W7) Warning! file: lib/apache-log4j.jar already exists.
Overwrite <<Y>es/<N>o/<A>ll/ne<U>er/<R>ename/<Esc>>? y
Inflating: lib/apache-log4j.jar
PKZIP: (W7) Warning! file: lib/jbcl.jar already exists.
Overwrite <<Y>es/<N>o/<A>ll/ne<U>er/<R>ename/<Esc>>? y
Inflating: lib/jbcl.jar
PKZIP: (W7) Warning! file: lib/sunxml.jar already exists.
Overwrite <<Y>es/<N>o/<A>ll/ne<U>er/<R>ename/<Esc>>? y
Inflating: lib/sunxml.jar
PKZIP: (W7) Warning! file: cfg/hosts.xml already exists.
Overwrite <<Y>es/<N>o/<A>ll/ne<U>er/<R>ename/<Esc>>? n
Skipping existing file: cfg/hosts.xml
PKZIP: (W7) Warning! file: cfg/sshtools.xml already exists.
Overwrite <<Y>es/<N>o/<A>ll/ne<U>er/<R>ename/<Esc>>? y
Inflating: cfg/sshtools.xml
PKZIP: (W7) Warning! file: cfg/csv_ver.txt already exists.
Overwrite <<Y>es/<N>o/<A>ll/ne<U>er/<R>ename/<Esc>>? y
Inflating: cfg/csv_ver.txt
  
```