

**Oracle Utilities Extractors and Schema  
for Oracle Utilities Mobile Workforce  
Management**

Data Mapping Guide

Release 2.8.0.2.0

**F90736-01**

December 2023

Oracle Utilities Extractors and Schema for Oracle Utilities Mobile Workforce Management Release 2.8.0.2.0  
Data Mapping Guide

F90736-01

Copyright © 2000, 2023 Oracle and/or its affiliates.

---

---

# Contents

|   |            |
|---|------------|
| <b>Preface</b> .....  | <b>i</b>   |
| Audience .....  | ii         |
| Documentation Accessibility .....                                       | ii         |
| Related Documents .....   | ii         |
| Conventions.....  | iii        |
| Acronyms.....   | iii        |
| <br>  |            |
| <b>Chapter 1</b>  |            |
| <b>Overview</b> .....   | <b>1-1</b> |
| Terminologies.....  | 1-1        |
| <Table Name> .....  | 1-1        |
| <br>  |            |
| <b>Chapter 2</b>  |            |
| <b>Data Maps for Oracle Utilities Mobile Workforce Management</b> ..... | <b>2-1</b> |
| Dimensions.....   | 2-2        |
| Appointment Time .....  | 2-2        |
| Appointment Time of Day.....  | 2-5        |
| Crew Shift.....   | 2-7        |
| Crew Time Usage.....  | 2-10       |
| Early Logoff Time.....  | 2-12       |
| Late Logon Time.....  | 2-16       |
| Response Time Deviation.....  | 2-19       |
| Shift BO Status .....   | 2-22       |
| Task BO Status .....  | 2-24       |
| Task Type .....   | 2-27       |
| Travel Distance Deviation .....   | 2-29       |
| Travel Duration Deviation .....   | 2-32       |
| Work Duration Deviation.....  | 2-35       |
| Shared Dimensions.....  | 2-38       |
| Account.....  | 2-38       |
| Address .....   | 2-38       |
| Crew .....  | 2-56       |
| Contact.....  | 2-60       |
| Device .....  | 2-60       |
| Person .....  | 2-61       |
| Premise.....  | 2-61       |
| Service Agreement .....   | 2-61       |
| Service Point .....   | 2-61       |
| Usage Subscription.....   | 2-62       |
| Facts.....  | 2-63       |
| Completed Shift.....  | 2-63       |
| Crew Task.....  | 2-71       |
| Field Activity.....   | 2-78       |

---

---

# Preface

Welcome to Oracle Utilities Extractors and Schema for Oracle Utilities Mobile Workforce Management Data Mapping Guide.

This guide provides the data mapping information from the Oracle Utilities Extractors and Schema for Oracle Utilities Mobile Workforce Management source system to the Oracle Utilities Extractors and Schema target product.

- [Audience](#)
- [Documentation Accessibility](#)
- [Related Documents](#)
- [Conventions](#)
- [Acronyms](#)

---

## Audience

The guide is intended for all implementers of Oracle Utilities Extractors and Schema for Oracle Utilities Extractors and Schema for Oracle Utilities Mobile Workforce Management.

## Documentation Accessibility

For information about configuring and using accessibility features for Oracle Utilities Analytics Warehouse, see the documentation at [http://docs.oracle.com/cd/E23943\\_01/bi.1111/e10544/appaccess.htm#BIEUG2756](http://docs.oracle.com/cd/E23943_01/bi.1111/e10544/appaccess.htm#BIEUG2756).

For information about Oracle's commitment to accessibility, visit the Oracle Accessibility Program website at <http://www.oracle.com/us/corporate/accessibility/index.html>.

### Access to Oracle Support

Oracle customers have access to electronic support through My Oracle Support. For more information, visit: <http://www.oracle.com/pls/topic/lookup?ctx=acc&id=info> or <http://www.oracle.com/pls/topic/lookup?ctx=acc&id=trs> if you are hearing impaired.

## Related Documents

Refer to the [Oracle Utilities Analytics Warehouse Installation and Configuration Checklist](#) for high-level steps to install and configure the Oracle Utilities Analytics Warehouse product. **Note** that this checklist includes information for Release 2.7.0.2.

The following documentation is included in this release.

### Installation, Administration, and Release Notes

- *Oracle Utilities Analytics Warehouse Release Notes*
- *Oracle Utilities Analytics Warehouse Getting Started Guide*
- *Oracle Utilities Analytics Warehouse Licensing Information User Manual*
- *Oracle Utilities Analytics Warehouse Installation and Configuration Guide*
- *Oracle Utilities Analytics Warehouse Quick Install Guide*
- *Oracle Utilities Analytics Warehouse Developer's Guide*

### Metric Reference Guides

Refer to the [Oracle Utilities Analytics Warehouse](#) documentation on Oracle Help Center for details about the metric reference guides included in this release.

### Data Mapping Guides

Refer to the [Oracle Utilities Analytics Warehouse](#) documentation on Oracle Help Center for details about the data mapping guides included in this release.

### See Also:

- Oracle Utilities Mobile Workforce Management Documentation Library

---

## Conventions

The following notational conventions are used in this document:

| Notation        | Indicates  |
|-----------------|--|
| <b>boldface</b> | Graphical user interface elements associated with an action, terms defined in text, or terms defined in the glossary |
| <i>italic</i>   | Book titles, emphasis, or placeholder variables for which you supply particular values                               |
| monospace       | Commands within a paragraph, URLs, code in examples, text that appears on the screen, or text that you enter         |

## Acronyms

The following terms are used in this document:

| Term | Indicates                                    |
|------|--|
| MWM  | Oracle Utilities Mobile Workforce Management |
| ETL  | Extraction, Transformation, and Loading      |
| ODI  | Oracle Data Integrator                       |
| OAS  | Oracle Analytics Server                      |
| OAAF | Oracle Utilities Application Framework       |
| OAAW | Oracle Utilities Analytics Warehouse         |

# Chapter 1

---

## Overview

This guide provides the data mapping information from the Oracle Utilities Mobile Workforce Management source system to the Oracle Utilities Extractors and Schema target product, along with the rules of data transformation.

## Terminologies

This section describes the terminology used for data maps included in the document.

### <Table Name>

The Table Name indicates the name of the fact or the dimension in a star schema in the data warehouse.

### Properties

The Properties table lists properties of the table independent of each field. The following properties are listed in the table:

| Property     | Value  |
|--------------|--|
| Target Table | Name of the table in the target schema (data warehouse) into which data is loaded  |
| Table Type   | Fact or Dimension  |
| SCD Type     | Type 1 - Existing records are updated directly. The nature of the dimension depends on how it handles changes made in the source system.<br><br>Type 2 - When changes occur, a new effective row is inserted. The existing records are deactivated by entering the current date as the effective end date and new records are inserted with an effective start date as today's date. The new record will have the end date as a high date. |

| Property                       | Value   |
|--------------------------------|---|
| Fact Type                      | <p>Whether this is a snapshot or accumulation fact table</p> <p>Snapshot - Captures a snapshot view of the data as available in the source system during that period (monthly or weekly). Each snapshot's data is stored independently.</p> <p>Accumulation - Data from the source system is accumulated periodically. Changes from source system will be merged with the existing data. Multiple copies of the same data will not be maintained.</p> |
| Source System Driver Table     | Name of the table in source database on which the data is primarily based   |
| Source System Download Table   | <p>Name of the download table populated by the source batch program.</p> <p>Note that this property is applicable only for the snapshot facts for which special batch programs have been designed in the source system for data extraction.</p>   |
| Stage Table                    | Name of the table in the staging schema (data warehouse) that can be used to query the data records generated by the ETL logic  |
| Oracle Data Integrator Package | Name of the ODI package that needs to be executed to transform data from the replication layer and populate a specific target table in the data warehouse   |
| ETL View                       | Resides in the replication layer and fetches the base values from the replication tables as a starting point for further transformations to be done by the Oracle Data Integrator interfaces  |
| Materialized View              | <p>Names of the materialized views delivered with the product for a specific fact table</p> <p>These materialized views are designed to support all of the OAS answers delivered with the product. Refreshing these materialized views will be taken care by separate ETL jobs.</p>   |
| Source Batch Program           | The batch program that needs to be executed in the MDM system to extract the data into download tables. This is available only for the MDM snapshot facts.  |

## Fields

The Fields table lists the individual properties of each field in the Presentation table or the Database table. The following fields are listed in the tables:

| Property     | Value   |
|--------------|---|
| Target Field | Name of the column in the fact or dimension table present in the data warehouse. The extracted/transformed data is loaded here. |
| Description  | Description of the target field   |



| Property             | Value  |
|----------------------|--|
| Source Field         | Name of the field from the source application used to load the target field either directly or after transformation      |
| Transformation Logic | Specifies the details of how the data from the source field is transformed before being populated into the target field. |

## Field Categories

This table lists the categories under which the fields in a particular fact or dimension are grouped. The categories presented are as below:

| Category                | Details  |
|-------------------------|--|
| Surrogate Key           | The primary key on the fact/dimension table maintained within the data warehouse.  |
| Natural Keys            | <p>The set of columns from the source system define the granularity of the fact or dimension table. The natural key columns from the source along with certain other data load attributes can be used to uniquely identify a record in the table.</p> <p>The additional columns needed for the identification depend on the type of the table as listed below:</p> <ul style="list-style-type: none"> <li>• SCD Type 1 Dimension - Data Source Indicator</li> <li>• SCD Type 2 Dimension - Effective Start Date, Effective End Date, Data Source Indicator</li> <li>• Accumulation Fact - Data Source Indicator</li> <li>• Snapshot Fact - Snapshot Date, Data Source Indicator</li> </ul> |
| Attributes              | Hold descriptive data from the source system and are typically available in dimension tables.  |
| Measures                | Hold numerical value based data calculated from the source system data and are typically available on fact tables.   |
| Degenerate Dimensions   | Hold descriptive data from the source system and are typically available in fact tables. These cannot be grouped into any of the available dimensions.   |
| Foreign Keys            | Foreign key references on the fact tables to the dimension tables.   |
| User Defined Attributes | Additional fields available to customers for extending the star schemas. These fields will not be populated out of the box. Customers need to customize the ETL and populate these fields.   |
| Data Load Attributes    | Hold the date/time information, job number details, etc, related to the ETL processes, that are needed for audit purposes.   |

# Chapter 2

---

## Data Maps for Oracle Utilities Mobile Workforce Management

This chapter contains data maps for the following Oracle Utilities Extractors and Schema for Oracle Utilities Mobile Workforce Management tables:

- [Dimensions](#)
- [Shared Dimensions](#)
- [Facts](#)

# Dimensions

This section lists all the dimension tables belonging to the Oracle Utilities Mobile Workforce Management star schemas only and are populated only from the Oracle Utilities Mobile Workforce Management source product.

## Appointment Time

Stores the time ranges in minutes indicating whether the crew missed an appointment, and if so, by how much time.

### Properties

| Property                   | Value             |
|----------------------------|-------------------|
| Target Table               | CD_APPT_TM        |
| Table Type                 | Dimension         |
| SCD Type                   | Type 1            |
| Source System Driver Table | F1_BKT_CONFIG     |
| Stage Table                | STG_CD_APPT_TM    |
| ODI Package                | B1_PKG_CD_APPT_TM |
| ETL View                   | B1_D_APPT_VW      |

### Fields

| Target Field         | Description                                 | Source Field                         | Transformation Logic   |
|----------------------|---|--------------------------------------|--|
| <b>Surrogate Key</b> |   |                                      |  |
| APPT_TM_KEY          | Appointment Time<br>Dimension Surrogate Key |                                      | This field is populated from the OUBI_APPT_TM_SEQ sequence.  |
| <b>Natural Keys</b>  |   |                                      |  |
| START_RANGE          | Appointment Time Start<br>Range             | F1_BKT_CONFIG_VALB<br>KT_START_RANGE | This field is populated with the bucket start range based on the bucket configuration code.<br><br>The bucket configuration code from the Bucket Configuration table is retrieved based on the bucket configuration BO defined for appointment time. |

| Target Field                   | Description                      | Source Field  | Transformation Logic  |
|--------------------------------|----------------------------------|---|---|
| END_RANGE                      | Appointment Time End Range       | F1_BKT_CONFIG_VAL.B<br>KT_END_RANGE                             | The field is populated with the bucket end range based on the bucket configuration code.<br><br>The bucket configuration code from the Bucket Configuration table is retrieved based on the bucket configuration BO defined for appointment time. |
| <b>Attributes</b>              |                                  |   |   |
| APPT_TM_DESCR                  | Appointment Time Description     | F1_BKT_CONFIG_VAL_<br>L.DESCR                                   |   |
| APPT_STATUS_DESCR              | Appointment Status Description   | CI_LOOKUP_VAL_L.DE<br>SCR_OVRD<br><br>CI_LOOKUP_VAL_L.DE<br>SCR | This field is populated with the description from Lookup Language table for M1_APPT_STATUS_FLG lookup field.<br><br>If override description is not available, regular description is extracted.   |
| APPT_STATUS_CD                 | Appointment Status Code          | F1_BKT_CONFIG_VAL.B<br>KT_VAL_TYPE_CD                           |   |
| APPT_TM_CD                     | Appointment Time Code            |   | <b>Note:</b> This field is obsolete and is not populated. The new bucket configurations based on the OUAF bucket configuration tables do not need this.   |
| <b>User Defined Attributes</b> |                                  |   |   |
| UDF1_CD                        | User Defined Field 1 Code        |   |   |
| UDF1_DESCR                     | User Defined Field 1 Description |   |   |
| UDF2_CD                        | User Defined Field 2 Code        |   |   |
| UDF2_DESCR                     | User Defined Field 2 Description |   |   |
| UDF3_CD                        | User Defined Field 3 Code        |   |   |
| UDF3_DESCR                     | User Defined Field 3 Description |   |   |
| UDF4_CD                        | User Defined Field 4 Code        |   |   |
| UDF4_DESCR                     | User Defined Field 4 Description |   |   |
| UDF5_CD                        | User Defined Field 5 Code        |   |   |

| Target Field                | Description                       | Source Field           | Transformation Logic  |
|-----------------------------|-----------------------------------|------------------------|---|
| UDF5_DESCR                  | User Defined Field 5 Description  |                        |   |
| UDF6_CD                     | User Defined Field 6 Code         |                        |   |
| UDF6_DESCR                  | User Defined Field 6 Description  |                        |   |
| UDF7_CD                     | User Defined Field 7 Code         |                        |   |
| UDF7_DESCR                  | User Defined Field 7 Description  |                        |   |
| UDF8_CD                     | User Defined Field 8 Code         |                        |   |
| UDF8_DESCR                  | User Defined Field 8 Description  |                        |   |
| UDF9_CD                     | User Defined Field 9 Code         |                        |   |
| UDF9_DESCR                  | User Defined Field 9 Description  |                        |   |
| UDF10_CD                    | User Defined Field 10 Code        |                        |   |
| UDF10_DESCR                 | User Defined Field 10 Description |                        |   |
| <b>Data Load Attributes</b> |                                   |                        |   |
| UPDATE_DTTM                 | Update Date and Time              |                        |   |
| DATA_LOAD_DTTM              | Data Load Date/Time               |                        | This field is populated with the load timestamp value.  |
| DATA_SOURCE_IND             | Data Source Indicator             | CI_INSTALLATION.ENV_ID | This field is populated with the DSI value on the source product instance configuration. The table is populated as part of the initial setup and the DSI value is extracted from the environment ID of the source system. |
| JOB_NBR                     | Job Number                        |                        | This field is populated with the ODI job execution session number.  |

**Note:** This bucket dimension is configured as one time load only. For information about data reload, see **Reloading the Bucket Configuration** section in the *Oracle Utilities Analytics Warehouse Installation and Configuration Guide*.

## Appointment Time of Day

Stores time ranges classifying an appointment time of day.

### Properties

| Property                   | Value                    |
|----------------------------|--------------------------|
| Target Table               | CD_APPT_TM_OF_DAY        |
| Table Type                 | Dimension                |
| SCD Type                   | Type 1                   |
| Source System Driver Table | F1_BKT_CONFIG            |
| Stage Table                | STG_CD_APPT_TM_OF_DAY    |
| ODI Package                | B1_PKG_CD_APPT_TM_OF_DAY |
| ETL View                   | B1_D_APPT_OF_DAY_VW      |

### Fields

| Target Field         | Description  | Source Field                      | Transformation Logic   |
|----------------------|--|-----------------------------------|--|
| <b>Surrogate Key</b> |  |                                   |  |
| APPT_TM_OF_DAY_KEY   | Appointment Time of Day<br>Dimension Surrogate Key |                                   | This field is populated from the OUBI_APPT_TM_OF_DAY_SEQ sequence.   |
| <b>Natural Keys</b>  |  |                                   |  |
| START_RANGE          | Appointment Time of Day<br>Start Range             | F1_BKT_CONFIG_VAL.BKT_START_RANGE | The field is populated with the bucket start range based on the bucket configuration code.<br><br>The bucket configuration code from the Bucket Configuration table is retrieved based on the bucket configuration BO defined for appointment time of day. |
| END_RANGE            | Appointment Time of Day<br>End Range               | F1_BKT_CONFIG_VAL.BKT_END_RANGE   | The field is populated with the bucket end range based on the bucket configuration code.<br><br>The bucket configuration code from the Bucket Configuration table is retrieved based on the bucket configuration BO defined for appointment time of day.   |

| Target Field                   | Description                         | Source Field              | Transformation Logic  |
|--------------------------------|-------------------------------------|---------------------------|---|
| <b>Attributes</b>              |                                     |                           |   |
| APPT_TM_OF_DAY_DESCR           | Appointment Time of Day Description | F1_BKT_CONFIG_VAL_L.DESCR |   |
| APPT_TM_OF_DAY_CD              | Appointment Time Of Day Code        |                           | <b>Note:</b> This field is obsolete and is not populated. The new bucket configurations based on the OUAF bucket configuration tables do not need this. |
| <b>User Defined Attributes</b> |                                     |                           |   |
| UDF1_CD                        | User Defined Field 1 Code           |                           |   |
| UDF1_DESCR                     | User Defined Field 1 Description    |                           |   |
| UDF2_CD                        | User Defined Field 2 Code           |                           |   |
| UDF2_DESCR                     | User Defined Field 2 Description    |                           |   |
| UDF3_CD                        | User Defined Field 3 Code           |                           |   |
| UDF3_DESCR                     | User Defined Field 3 Description    |                           |   |
| UDF4_CD                        | User Defined Field 4 Code           |                           |   |
| UDF4_DESCR                     | User Defined Field 4 Description    |                           |   |
| UDF5_CD                        | User Defined Field 5 Code           |                           |   |
| UDF5_DESCR                     | User Defined Field 5 Description    |                           |   |
| UDF6_CD                        | User Defined Field 6 Code           |                           |   |
| UDF6_DESCR                     | User Defined Field 6 Description    |                           |   |
| UDF7_CD                        | User Defined Field 7 Code           |                           |   |
| UDF7_DESCR                     | User Defined Field 7 Description    |                           |   |
| UDF8_CD                        | User Defined Field 8 Code           |                           |   |
| UDF8_DESCR                     | User Defined Field 8 Description    |                           |   |
| UDF9_CD                        | User Defined Field 9 Code           |                           |   |
| UDF9_DESCR                     | User Defined Field 9 Description    |                           |   |
| UDF10_CD                       | User Defined Field 10 Code          |                           |   |

| Target Field                | Description                          | Source Field           | Transformation Logic  |
|-----------------------------|--------------------------------------|------------------------|---|
| UDF10_DESCR                 | User Defined Field 10<br>Description |                        |   |
| <b>Data Load Attributes</b> |                                      |                        |   |
| UPDATE_DTTM                 | Update Date and Time                 |                        |   |
| DATA_LOAD_DTTM              | Data Load Date/Time                  |                        | This field is populated with the load timestamp value.  |
| DATA_SOURCE_IND             | Data Source Indicator                | CL_INSTALLATION.ENV_ID | This field is populated with the DSI value on the source product instance configuration. The table is populated as part of the initial setup and the DSI value is extracted from the environment ID of the source system. |
| JOB_NBR                     | Job Number                           |                        | This field is populated with the ODI job execution session number.  |

**Note:** This bucket dimension is configured as one time load only. For information about data reload, see the **Reloading the Bucket Configuration** section in *Oracle Utilities Analytics Warehouse Installation and Configuration Guide*.

## Crew Shift

Includes the details of all crew shifts defined in the Oracle Utilities Extractors and Schema for Oracle Utilities Mobile Workforce Management system.



## Properties

| Property                   | Value                      |
|----------------------------|----------------------------|
| Target Table               | CD_CREW_SHIFT              |
| Table Type                 | Dimension                  |
| SCD Type                   | Type 2                     |
| Source System Driver Table | M1_CREW_SHFT<br>F1_BUS_OBJ |
| Stage Table                | STG_CD_CREW_SHIFT          |
| ODI Package                | B1_PKG_CD_CREW_SHIFT       |
| ETL View                   | B1_D_CREW_SHIFT_VW         |

## Fields

| Target Field          | Description                  | Source Field   | Transformation Logic   |
|-----------------------|------------------------------|--|--|
| <b>Surrogate Key</b>  |                              |  |  |
| CREW_SHIFT_KEY        | Crew Shift Surrogate Key     |  | This field is populated from the SPL_CREW_SHIFT_SEQ sequence.  |
| <b>Natural Keys</b>   |                              |  |  |
| SRC_CREW_SHIFT_ID     | Crew Shift ID                | M1_CREW_SHFT.CREW_SHIFT_ID   |  |
| <b>Attributes</b>     |                              |  |  |
| CREW_SHIFT_TYPE_DESCR | Crew Shift Type Description  | M1_CREW_SHFT_TYPE_L.DESCR  |  |
| PRIMARY_FN_DESCR      | Primary Function Description | M1_SVC_CLS_L.DESCR   |  |
| CREW_SHIFT_INFO       | Crew Shift Description       | M1_RESRC_ID.RESRC_ID_VAL<br><br>M1_CREW_SHFT_TYPE_L.DESCR<br><br>M1_CREW_SHFT.PLAN_START_DTTM<br><br>M1_CREW_SHFT.PLAN_END_DTTM<br><br>F1_BUS_OBJ_STATUS_L.DESCR | This field is a concatenation of crew name, crew shift type, planned start date, planned end date, and shift status. |
| CREW_SHIFT_TYPE_CD    | Crew Shift Type Code         | M1_CREW_SHFT.CREW_SHIFT_TYPE_CD  |  |

| Target Field                   | Description                          | Source Field                        | Transformation Logic   |
|--------------------------------|--------------------------------------|-------------------------------------|--|
| PRIMARY_FN_CD                  | Primary Function Code                | M1_CREW_SHFT_SVC_C<br>LS.SVC_CLS_CD | This field is populated from the Crew Shift Service Class table based on the usage flag (set as 'Primary') associated with the current shift ID. |
| <b>User Defined Attributes</b> |                                      |                                     |  |
| UDF1_CD                        | Shift Type                           |                                     |  |
| UDF1_DESCR                     | Shift Type Code                      |                                     |  |
| UDF2_CD                        | User Defined Field 2 Code            |                                     |  |
| UDF2_DESCR                     | User Defined Field 2<br>Description  |                                     |  |
| UDF3_CD                        | User Defined Field 3 Code            |                                     |  |
| UDF3_DESCR                     | User Defined Field 3<br>Description  |                                     |  |
| UDF4_CD                        | User Defined Field 4 Code            |                                     |  |
| UDF4_DESCR                     | User Defined Field 4<br>Description  |                                     |  |
| UDF5_CD                        | User Defined Field 5 Code            |                                     |  |
| UDF5_DESCR                     | User Defined Field 5<br>Description  |                                     |  |
| UDF6_CD                        | User Defined Field 6 Code            |                                     |  |
| UDF6_DESCR                     | User Defined Field 6<br>Description  |                                     |  |
| UDF7_CD                        | User Defined Field 7Code             |                                     |  |
| UDF7_DESCR                     | User Defined Field 7<br>Description  |                                     |  |
| UDF8_CD                        | User Defined Field 8 Code            |                                     |  |
| UDF8_DESCR                     | User Defined Field 8<br>Description  |                                     |  |
| UDF9_CD                        | User Defined Field 9 Code            |                                     |  |
| UDF9_DESCR                     | User Defined Field 9<br>Description  |                                     |  |
| UDF10_CD                       | User Defined Field 10 Code           |                                     |  |
| UDF10_DESCR                    | User Defined Field 10<br>Description |                                     |  |
| <b>Data Load Attributes</b>    |                                      |                                     |  |
| EFF_END_DTTM                   | Effective End Date/Time              |                                     |  |

| Target Field    | Description               | Source Field           | Transformation Logic  |
|-----------------|---------------------------|------------------------|---|
| EFF_START_DTTM  | Effective Start Date/Time |                        |   |
| DATA_LOAD_DTTM  | Data Load Date/Time       |                        | This field is populated with the load timestamp value.  |
| DATA_SOURCE_IND | Data Source Indicator     | CI_INSTALLATION.ENV_ID | This field is populated with the DSI value on the source product instance configuration. The table is populated as part of the initial setup and the DSI value is extracted from the environment ID of the source system. |
| JOB_NBR         | Job Number                |                        | This field is populated with the ODI job execution session number.  |

## Crew Time Usage

Holds all valid values for crew time usages based on the tasks carried out by crews. The crew time usages are further classified as productive or non productive.

### Properties

| Property                   | Value                 |
|----------------------------|-----------------------|
| Target Table               | CD_CREW_TM_USG        |
| Table Type                 | Dimension             |
| SCD Type                   | Type 1                |
| Source System Driver Table | F1_EXT_LOOKUP_VAL     |
| Stage Table                | STG_CD_CREW_TM_USG    |
| ODI Package                | B1_PKG_CD_CREW_TM_USG |
| ETL View                   | B1_D_CREW_TM_USG_VW   |

### Fields

| Target Field         | Description                                | Source Field | Transformation Logic  |
|----------------------|--|--------------|---|
| <b>Surrogate Key</b> |  |              |   |
| CREW_TM_USG_KEY      | Crew Time Usage<br>Dimension Surrogate Key |              | This field is populated from the OUBI_CREW_TM_USG_SEQ sequence. |

| Target Field                   | Description                      | Source Field  | Transformation Logic  |
|--------------------------------|----------------------------------|---|---|
| <b>Natural Keys</b>            |                                  |   |   |
| CREW_TM_USG_CD                 | Crew Time Usage Code             | F1_EXT_LOOKUP_VAL.<br>F1_EXT_LOOKUP_VAL<br>UE                           | This field extracts the records defined only for the M1-CrewTimeUsageLookup lookup business object.   |
| <b>Attributes</b>              |                                  |   |   |
| CREW_TM_USG_DESCR              | Crew Time Usage Description      | F1_EXT_LOOKUP_VAL_<br>L.DESCR_OVRD<br><br>F1_EXT_LOOKUP_VAL_<br>L.DESCR | If override description is not available, regular description is extracted.   |
| PRODUCTIVITY_DESCR             | Productivity Description         | CI_LOOKUP_VAL_L.DE<br>SCR_OVRD<br><br>CI_LOOKUP_VAL_L.DE<br>SCR         | This field is populated with description from the Lookup Language table for the M1_CREW_TM_USG_CLS_FLG lookup field.<br><br>If override description is not available, regular description is extracted. |
| PRODUCTIVITY_CD                | Productivity Code                | F1_EXT_LOOKUP_VAL.<br>BO_DATA_AREA                                      | This field is populated with the productivity code from the CLOB column.  |
| <b>User Defined Attributes</b> |                                  |   |   |
| UDF1_CD                        | User Defined Field 1 Code        |   |   |
| UDF1_DESCR                     | User Defined Field 1 Description |   |   |
| UDF2_CD                        | User Defined Field 2 Code        |   |   |
| UDF2_DESCR                     | User Defined Field 2 Description |   |   |
| UDF3_CD                        | User Defined Field 3 Code        |   |   |
| UDF3_DESCR                     | User Defined Field 3 Description |   |   |
| UDF4_CD                        | User Defined Field 4 Code        |   |   |
| UDF4_DESCR                     | User Defined Field 4 Description |   |   |
| UDF5_CD                        | User Defined Field 5 Code        |   |   |
| UDF5_DESCR                     | User Defined Field 5 Description |   |   |
| UDF6_CD                        | User Defined Field 6 Code        |   |   |

| Target Field                | Description                          | Source Field               | Transformation Logic  |
|-----------------------------|--------------------------------------|----------------------------|---|
| UDF6_DESCR                  | User Defined Field 6<br>Description  |                            |   |
| UDF7_CD                     | User Defined Field 7Code             |                            |   |
| UDF7_DESCR                  | User Defined Field 7<br>Description  |                            |   |
| UDF8_CD                     | User Defined Field 8 Code            |                            |   |
| UDF8_DESCR                  | User Defined Field 8<br>Description  |                            |   |
| UDF9_CD                     | User Defined Field 9 Code            |                            |   |
| UDF9_DESCR                  | User Defined Field 9<br>Description  |                            |   |
| UDF10_CD                    | User Defined Field 10 Code           |                            |   |
| UDF10_DESCR                 | User Defined Field 10<br>Description |                            |   |
| <b>Data Load Attributes</b> |                                      |                            |   |
| UPDATE_DTTM                 | Update Date/Time                     |                            |   |
| DATA_LOAD_DTTM              | Data Load Date/Time                  |                            | This field is populated with the load timestamp value.  |
| DATA_SOURCE_IND             | Data Source Indicator                | CI_INSTALLATION.ENV<br>_ID | This field is populated with the DSI value on the source product instance configuration. The table is populated as part of the initial setup and the DSI value is extracted from the environment ID of the source system. |
| JOB_NBR                     | Job Number                           |                            | This field is populated with the ODI job execution session number.  |

## Early Logoff Time

Stores the time ranges (in minutes) indicating by how much time the crew is logging off the shift earlier than planned.

## Properties

| Property                   | Value                     |
|----------------------------|---------------------------|
| Target Table               | CD_EARLY_LOGOFF_TM        |
| Table Type                 | Dimension                 |
| SCD Type                   | Type 1                    |
| Source System Driver Table | F1_BKT_CONFIG             |
| Stage Table                | STG_CD_EARLY_LOGOFF_TM    |
| ODI Package                | B1_PKG_CD_EARLY_LOGOFF_TM |
| ETL View                   | B1_D_EARLY_LOGOFF_TM_VW   |

## Fields

| Target Field          | Description                               | Source Field                      | Transformation Logic   |
|-----------------------|---|-----------------------------------|--|
| <b>Surrogate Key</b>  |   |                                   |  |
| EARLY_LOGOFF_TM_KEY   | Early Logoff Time Dimension Surrogate Key |                                   | This field is populated from the OUBI_EARLY_LOGOFF_TM_SEQ sequence.  |
| <b>Natural Keys</b>   |   |                                   |  |
| START_RANGE           | Early Logoff Time Start Range             | F1_BKT_CONFIG_VAL.BKT_START_RANGE | The field is populated with the bucket start range based on bucket configuration code.<br><br>The bucket configuration code from the Bucket Configuration table is retrieved based on the bucket configuration BO defined for early logoff time. |
| END_RANGE             | Early Logoff Time End Range               | F1_BKT_CONFIG_VAL.BKT_END_RANGE   | The field is populated with the bucket end range based on bucket configuration code.<br><br>The bucket configuration code from the Bucket Configuration table is retrieved based on the bucket configuration BO defined for early log off time.  |
| <b>Attributes</b>     |   |                                   |  |
| EARLY_LOGOFF_TM_DESCR | Early Logoff Time Description             | F1_BKT_CONFIG_VAL.LDESCR          |  |
| CONSIDERED_ONTIME_CD  | Considered On Time Code                   | F1_BKT_CONFIG_VAL.BKT_VAL_TYPE_CD |  |

| Target Field                   | Description                      | Source Field  | Transformation Logic  |
|--------------------------------|----------------------------------|---|---|
| CONSIDERED_ONTIME_DESCR        | Considered On Time Description   | CL_LOOKUP_VAL_L.<br>DESCR_OVRD<br><br>CL_LOOKUP_VAL_L.<br>DESCR | This field is populated with description from the Lookup Language table for the M1_CONSD_ON_TIME_FLG lookup field.<br><br>If override description is not available, regular description is extracted. |
| EARLY_LOGOFF_TM_CD             | Early Logoff Time Code           |   | <b>Note:</b> This field is obsolete and is not be populated. The new bucket configurations based on the OUAF bucket configuration tables do not need this.  |
| <b>User Defined Attributes</b> |                                  |   |   |
| UDF1_CD                        | User Defined Field 1 Code        |   |   |
| UDF1_DESCR                     | User Defined Field 1 Description |   |   |
| UDF2_CD                        | User Defined Field 2 Code        |   |   |
| UDF2_DESCR                     | User Defined Field 2 Description |   |   |
| UDF3_CD                        | User Defined Field 3 Code        |   |   |
| UDF3_DESCR                     | User Defined Field 3 Description |   |   |
| UDF4_CD                        | User Defined Field 4 Code        |   |   |
| UDF4_DESCR                     | User Defined Field 4 Description |   |   |
| UDF5_CD                        | User Defined Field 5 Code        |   |   |
| UDF5_DESCR                     | User Defined Field 5 Description |   |   |
| UDF6_CD                        | User Defined Field 6 Code        |   |   |
| UDF6_DESCR                     | User Defined Field 6 Description |   |   |
| UDF7_CD                        | User Defined Field 7Code         |   |   |
| UDF7_DESCR                     | User Defined Field 7 Description |   |   |
| UDF8_CD                        | User Defined Field 8 Code        |   |   |
| UDF8_DESCR                     | User Defined Field 8 Description |   |   |
| UDF9_CD                        | User Defined Field 9 Code        |   |   |

| Target Field                | Description                          | Source Field               | Transformation Logic  |
|-----------------------------|--------------------------------------|----------------------------|---|
| UDF9_DESCR                  | User Defined Field 9<br>Description  |                            |   |
| UDF10_CD                    | User Defined Field 10 Code           |                            |   |
| UDF10_DESCR                 | User Defined Field 10<br>Description |                            |   |
| <b>Data Load Attributes</b> |                                      |                            |   |
| UPDATE_DTTM                 | Update Date/Time                     |                            |   |
| DATA_LOAD_DTTM              | Data Load Date/Time                  |                            | This field is populated with the load timestamp value.  |
| DATA_SOURCE_IND             | Data Source Indicator                | CI_INSTALLATION.ENV<br>_ID | This field is populated with the DSI value on the source product instance configuration. The table is populated as part of the initial setup and the DSI value is extracted from the environment ID of the source system. |
| JOB_NBR                     | Job Number                           |                            | This field is populated with the ODI job execution session number.  |

**Note:** This bucket dimension is configured as one time load only. For information about data reload, see **Reloading the Bucket Configuration** section in the *Oracle Utilities Analytics Warehouse Installation and Configuration Guide*.



## Late Logon Time

Stores the time ranges (in minutes) indicating by how much time the crew is late to logon for their shift.

### Properties

| Property                   | Value                   |
|----------------------------|-------------------------|
| Target Table               | CD_LATE_LOGON_TM        |
| Table Type                 | Dimension               |
| SCD Type                   | Type 1                  |
| Source System Driver Table | F1_BKT_CONFIG           |
| Stage Table                | STG_CD_LATE_LOGON_TM    |
| ODI Package                | B1_PKG_CD_LATE_LOGON_TM |
| ETL View                   | B1_D_LATE_LOGON_TM_VW   |

### Fields

| Target Field         | Description                                | Source Field                          | Transformation Logic   |
|----------------------|--|---------------------------------------|--|
| <b>Surrogate Key</b> |  |                                       |  |
| LATE_LOGON_TM_KEY    | Late Logon Time<br>Dimension Surrogate Key |                                       | This field is populated from the OUBI_LATE_LOGON_TM_SEQ sequence.  |
| <b>Natural Keys</b>  |  |                                       |  |
| START_RANGE          | Late Logon Time Start<br>Range             | F1_BKT_CONFIG_VAL.B<br>KT_START_RANGE | The field is populated with the bucket start range based on bucket configuration code.<br><br>The bucket configuration code from the Bucket Configuration table is retrieved based on the bucket configuration BO defined for late logon time. |
| END_RANGE            | Late Logon Time End<br>Range               | F1_BKT_CONFIG_VAL.B<br>KT_END_RANGE   | The field is populated with the bucket end range based on bucket configuration code.<br><br>The bucket configuration code from the Bucket Configuration table is retrieved based on the bucket configuration BO defined for late logon time.   |
| <b>Attributes</b>    |  |                                       |  |

| Target Field                   | Description                      | Source Field                                      | Transformation Logic  |
|--------------------------------|----------------------------------|---|---|
| LATE_LOGON_TM_DESCR            | Late Logon Time Description      | F1_BKT_CONFIG_VAL_LDESCR                          |   |
| CONSIDERED_ONTIME_CD           | Considered On Time Code          | F1_BKT_CONFIG_VAL_BKT_VAL_TYPE_CD                 |   |
| CONSIDERED_ONTIME_DESCR        | Considered On Time Description   | CI_LOOKUP_VAL_LDESCR_OVRD<br>CI_LOOKUP_VAL_LDESCR | This field is populated with description from the Lookup Language table for the M1_CONSD_ON_TIME_FLG lookup field.<br><br>If override description is not available, regular description is extracted. |
| LATE_LOGON_TM_CD               | Late Logon Time Code             |   | <b>Note:</b> This field is obsolete now and is not populated. The new bucket configurations based on the OUAF bucket configuration tables do not need this.   |
| <b>User Defined Attributes</b> |                                  |   |   |
| UDF1_CD                        | User Defined Field 1 Code        |   |   |
| UDF1_DESCR                     | User Defined Field 1 Description |   |   |
| UDF2_CD                        | User Defined Field 2 Code        |   |   |
| UDF2_DESCR                     | User Defined Field 2 Description |   |   |
| UDF3_CD                        | User Defined Field 3 Code        |   |   |
| UDF3_DESCR                     | User Defined Field 3 Description |   |   |
| UDF4_CD                        | User Defined Field 4 Code        |   |   |
| UDF4_DESCR                     | User Defined Field 4 Description |   |   |
| UDF5_CD                        | User Defined Field 5 Code        |   |   |
| UDF5_DESCR                     | User Defined Field 5 Description |   |   |
| UDF6_CD                        | User Defined Field 6 Code        |   |   |
| UDF6_DESCR                     | User Defined Field 6 Description |   |   |
| UDF7_CD                        | User Defined Field 7Code         |   |   |
| UDF7_DESCR                     | User Defined Field 7 Description |   |   |

| Target Field                | Description                       | Source Field           | Transformation Logic  |
|-----------------------------|-----------------------------------|------------------------|---|
| UDF8_CD                     | User Defined Field 8 Code         |                        |   |
| UDF8_DESCR                  | User Defined Field 8 Description  |                        |   |
| UDF9_CD                     | User Defined Field 9 Code         |                        |   |
| UDF9_DESCR                  | User Defined Field 9 Description  |                        |   |
| UDF10_CD                    | User Defined Field 10 Code        |                        |   |
| UDF10_DESCR                 | User Defined Field 10 Description |                        |   |
| <b>Data Load Attributes</b> |                                   |                        |   |
| UPDATE_DTTM                 | Update Date/Time                  |                        |   |
| DATA_LOAD_DTTM              | Data Load Date/Time               |                        | This field is populated with the load timestamp value.  |
| DATA_SOURCE_IND             | Data Source Indicator             | CI_INSTALLATION.ENV_ID | This field is populated with the DSI value on the source product instance configuration. The table is populated as part of the initial setup and the DSI value is extracted from the environment ID of the source system. |
| JOB_NBR                     | Job Number                        |                        | This field is populated with the ODI job execution session number.  |

**Note:** This bucket dimension is configured as one time load only. For information about data reload, see **Reloading the Bucket Configuration** section in the *Oracle Utilities Analytics Warehouse Installation and Configuration Guide*.

## Response Time Deviation

Stores the configurable ranges (in minutes) for the deviations in the response time of crews against the SLAs defined for various activities. It has an indicator to tell if the SLA is met or missed.

### Properties

| Property                   | Value                 |
|----------------------------|-----------------------|
| Target Table               | CD_RESP_TM_DEV        |
| Table Type                 | Dimension             |
| SCD Type                   | Type 1                |
| Source System Driver Table | F1_BKT_CONFIG         |
| Stage Table                | STG_CD_RESP_TM_DEV    |
| ODI Package                | B1_PKG_CD_RESP_TM_DEV |
| ETL View                   | B1_D_RESP_TM_DEV_VW   |

### Fields

| Target Field         | Description                                     | Source Field                     | Transformation Logic   |
|----------------------|---|----------------------------------|--|
| <b>Surrogate Key</b> |   |                                  |  |
| RESP_TM_DEV_KEY      | Response Time Deviation Dimension Surrogate Key |                                  | This field is populated from the OUBI_RESP_TM_DEV_SEQ sequence.  |
| <b>Natural Keys</b>  |   |                                  |  |
| START_RANGE          | Response Time Deviation Start Range             | F1_BKT_CONFIG_VALBKT_START_RANGE | The field is populated with the bucket start range based on bucket configuration code.<br><br>The bucket configuration code from the Bucket Configuration table is retrieved based on the bucket configuration BO defined for response time deviation. |

| Target Field                   | Description                         | Source Field  | Transformation Logic   |
|--------------------------------|-------------------------------------|---|--|
| END_RANGE                      | Response Time Deviation End Range   | F1_BKT_CONFIG_VAL.B<br>KT_END_RANGE                             | The field is populated with the bucket end range based on bucket configuration code.<br><br>The bucket configuration code from the Bucket Configuration table is retrieved based on the bucket configuration BO defined for response time deviation. |
| <b>Attributes</b>              |                                     |   |  |
| RESP_TM_DEV_DESCR              | Response Time Deviation Description | F1_BKT_CONFIG_VAL_<br>L.DESCR                                   |  |
| SLA_STATUS_DESCR               | SLA Status Description              | CI_LOOKUP_VAL_L.DE<br>SCR_OVRD<br><br>CI_LOOKUP_VAL_L.DE<br>SCR | This field is populated with description from the Lookup Language table for the M1_SLA_STATUS_FLG lookup field.<br><br>If override description is not available, regular description is extracted.   |
| SLA_STATUS_CD                  | SLA Status Code                     | F1_BKT_CONFIG_VAL.B<br>KT_VAL_TYPE_CD                           |  |
| RESP_TM_DEV_CD                 | Response Time Deviation Code        |   | <b>Note:</b> This field is obsolete and is not populated. The new bucket configurations based on the OUAF bucket configuration tables do not need this.  |
| <b>User Defined Attributes</b> |                                     |   |  |
| UDF1_CD                        | User Defined Field 1 Code           |   |  |
| UDF1_DESCR                     | User Defined Field 1 Description    |   |  |
| UDF2_CD                        | User Defined Field 2 Code           |   |  |
| UDF2_DESCR                     | User Defined Field 2 Description    |   |  |
| UDF3_CD                        | User Defined Field 3 Code           |   |  |
| UDF3_DESCR                     | User Defined Field 3 Description    |   |  |
| UDF4_CD                        | User Defined Field 4 Code           |   |  |
| UDF4_DESCR                     | User Defined Field 4 Description    |   |  |

| Target Field                | Description                       | Source Field           | Transformation Logic  |
|-----------------------------|-----------------------------------|------------------------|---|
| UDF5_CD                     | User Defined Field 5 Code         |                        |   |
| UDF5_DESCR                  | User Defined Field 5 Description  |                        |   |
| UDF6_CD                     | User Defined Field 6 Code         |                        |   |
| UDF6_DESCR                  | User Defined Field 6 Description  |                        |   |
| UDF7_CD                     | User Defined Field 7Code          |                        |   |
| UDF7_DESCR                  | User Defined Field 7 Description  |                        |   |
| UDF8_CD                     | User Defined Field 8 Code         |                        |   |
| UDF8_DESCR                  | User Defined Field 8 Description  |                        |   |
| UDF9_CD                     | User Defined Field 9 Code         |                        |   |
| UDF9_DESCR                  | User Defined Field 9 Description  |                        |   |
| UDF10_CD                    | User Defined Field 10 Code        |                        |   |
| UDF10_DESCR                 | User Defined Field 10 Description |                        |   |
| <b>Data Load Attributes</b> |                                   |                        |   |
| UPDATE_DTTM                 | Update Date/Time                  |                        |   |
| DATA_LOAD_DTTM              | Data Load Date/Time               |                        | This field is populated with the load timestamp value.  |
| DATA_SOURCE_IND             | Data Source Indicator             | CI_INSTALLATION.ENV_ID | This field is populated with the DSI value on the source product instance configuration. The table is populated as part of the initial setup and the DSI value is extracted from the environment ID of the source system. |
| JOB_NBR                     | Job Number                        |                        | This field is populated with the ODI job execution session number.  |

**Note:** This bucket dimension is configured as one time load only. For information about data reload, see **Reloading the Bucket Configuration** section in the *Oracle Utilities Analytics Warehouse Installation and Configuration Guide*.

## Shift BO Status

Holds valid combination of status and reason for shifts.

### Properties

| Property                   | Value                               |
|----------------------------|-------------------------------------|
| Target Table               | CD_SHIFT_BO_STATUS                  |
| Table Type                 | Dimension                           |
| SCD Type                   | Type 1                              |
| Source System Driver Table | F1_BUS_OBJ<br>F1_BUS_OBJ_STATUS_RSN |
| Stage Table                | STG_CD_SHIFT_BO_STATUS              |
| ODI Package                | B1_PKG_CD_SHIFT_BO_STATUS           |
| ETL View                   | B1_D_SHIFT_BO_STATUS_VW             |

### Fields

| Target Field         | Description                   | Source Field                         | Transformation Logic  |
|----------------------|-------------------------------|--------------------------------------|---|
| <b>Surrogate Key</b> |                               |                                      |   |
| SHIFT_BO_STATUS_KEY  | Shift BO Status Surrogate Key |                                      | This field is populated from the OUBI_SHIFT_BO_STAT_SEQ sequence.                   |
| <b>Natural Keys</b>  |                               |                                      |   |
| BUS_OBJ_CD           | Business Object               | F1_BUS_OBJ.BUS_OBJ_CD                | This field extracts all business objects of the Crew Shift maintenance object only. |
| STATUS_CD            | BO Status Code                | F1_BUS_OBJ_STATUS.BO_STATUS_CD       |   |
| REASON_CD            | Status Reason Code            | F1_BUS_OBJ_STATUS_REASON_CD          |   |
| <b>Attributes</b>    |                               |                                      |   |
| BUS_OBJ_DESCR        | Business Object Description   | F1_BUS_OBJ_L.DESCR                   |   |
| STATUS_DESCR         | Status Description            | F1_BUS_OBJ_STATUS_L.DESCR            |   |
| STATUS_COND_CD       | Status Condition Code         | F1_BUS_OBJ_STATUS.BO_STATUS_COND_FLG |   |

| Target Field                   | Description                      | Source Field  | Transformation Logic  |
|--------------------------------|----------------------------------|---|---|
| STATUS_COND_DESCR              | Status Condition Description     | CL_LOOKUP_VAL_L.NV<br>L(CI_LOOKUP_VAL_L.D<br>ESCR_OVRD,CI_LOOKU<br>P_VAL_L.DESCR) | This field is populated with description from the Lookup Language table for the BO_STATUS_COND_FLG lookup field.<br><br>If override description is not available, regular description is extracted. |
| REASON_DESCR                   | Status Reason Description        | F1_BUS_OBJ_STATUS_R<br>SN_L.DESCR   |   |
| <b>User Defined Attributes</b> |                                  |   |   |
| UDF1_CD                        | User Defined Field 1 Code        |   |   |
| UDF1_DESCR                     | User Defined Field 1 Description |   |   |
| UDF2_CD                        | User Defined Field 2 Code        |   |   |
| UDF2_DESCR                     | User Defined Field 2 Description |   |   |
| UDF3_CD                        | User Defined Field 3 Code        |   |   |
| UDF3_DESCR                     | User Defined Field 3 Description |   |   |
| UDF4_CD                        | User Defined Field 4 Code        |   |   |
| UDF4_DESCR                     | User Defined Field 4 Description |   |   |
| UDF5_CD                        | User Defined Field 5 Code        |   |   |
| UDF5_DESCR                     | User Defined Field 5 Description |   |   |
| UDF6_CD                        | User Defined Field 6 Code        |   |   |
| UDF6_DESCR                     | User Defined Field 6 Description |   |   |
| UDF7_CD                        | User Defined Field 7Code         |   |   |
| UDF7_DESCR                     | User Defined Field 7 Description |   |   |
| UDF8_CD                        | User Defined Field 8 Code        |   |   |
| UDF8_DESCR                     | User Defined Field 8 Description |   |   |
| UDF9_CD                        | User Defined Field 9 Code        |   |   |
| UDF9_DESCR                     | User Defined Field 9 Description |   |   |
| UDF10_CD                       | User Defined Field 10 Code       |   |   |



| Target Field                | Description                          | Source Field               | Transformation Logic  |
|-----------------------------|--------------------------------------|----------------------------|---|
| UDF10_DESCR                 | User Defined Field 10<br>Description |                            |   |
| <b>Data Load Attributes</b> |                                      |                            |   |
| UPDATE_DTTM                 | Update Date/Time                     |                            |   |
| DATA_LOAD_DTTM              | Data Load Date/Time                  |                            | This field is populated with the load timestamp value.  |
| DATA_SOURCE_IND             | Data Source Indicator                | CL_INSTALLATION.ENV<br>_ID | This field is populated with the DSI value on the source product instance configuration. The table is populated as part of the initial setup and the DSI value is extracted from the environment ID of the source system. |
| JOB_NBR                     | Job Number                           |                            | This field is populated with the ODI job execution session number.  |

## Task BO Status

Holds all valid combination of status and reasons for schedulable tasks.

### Properties

| Property                   | Value                               |
|----------------------------|-------------------------------------|
| Target Table               | CD_TASK_BO_STATUS                   |
| Table Type                 | Dimension                           |
| SCD Type                   | Type 1                              |
| Source System Driver Table | F1_BUS_OBJ<br>F1_BUS_OBJ_STATUS_RSN |
| Stage Table                | STG_CD_TASK_BO_STATUS               |
| ODI Package                | B1_PKG_CD_TASK_BO_STATUS            |
| ETL View                   | B1_D_TASK_BO_STATUS_VW              |

### Fields

| Target Field         | Description | Source Field | Transformation Logic |
|----------------------|-------------|--------------|----------------------|
| <b>Surrogate Key</b> |             |              |                      |

| Target Field                   | Description                      | Source Field  | Transformation Logic  |
|--------------------------------|----------------------------------|---|---|
| TASK_BO_STATUS_KEY             | Task BO Status Surrogate Key     |   | This field is populated from the OUBI_TASK_BO_STAT_SEQ sequence.  |
| <b>Natural Keys</b>            |                                  |   |   |
| BUS_OBJ_CD                     | Business Object                  | F1_BUS_OBJ.BUS_OBJ_CD   | This field extracts all business objects of the Device Event maintenance object only.   |
| STATUS_CD                      | BO Status Code                   | F1_BUS_OBJ_STATUS.BO_STATUS_CD  |   |
| REASON_CD                      | Status Reason Code               | F1_BUS_OBJ_STATUS_REASON.BO_STATUS_REASON_CD                          |   |
| <b>Attributes</b>              |                                  |   |   |
| BUS_OBJ_DESCR                  | Business Object Description      | F1_BUS_OBJ_L.DESCR  |   |
| STATUS_DESCR                   | Status Description               | F1_BUS_OBJ_STATUS_L.DESCR   |   |
| STATUS_COND_CD                 | Status Condition Code            | F1_BUS_OBJ_STATUS.BO_STATUS_COND_FLG                                  |   |
| STATUS_COND_DESCR              | Status Condition Description     | CI_LOOKUP_VAL_L.NVL(CI_LOOKUP_VAL_L.DESCR_OVRD,CI_LOOKUP_VAL_L.DESCR) | This field is populated with description from the Lookup Language table for the BO_STATUS_COND_FLG lookup field.<br><br>If override description is not available, regular description is extracted.                           |
| REASON_DESCR                   | Status Reason Description        | F1_BUS_OBJ_STATUS_REASON_L.DESCR                                      |   |
| INCOMPLETE_IND                 | Incomplete Indicator             | F1_BUS_OBJ_STATUS_OPT.BO_OPT_VAL                                      | This field is populated based on the state condition defined on the business object status.<br><br>If the status is 'Postponed', or 'Completed' with 'Incomplete' status reason, the indicator is populated as '1', else '0'. |
| <b>User Defined Attributes</b> |                                  |   |   |
| UDF1_CD                        | User Defined Field 1 Code        |   |   |
| UDF1_DESCR                     | User Defined Field 1 Description |   |   |
| UDF2_CD                        | User Defined Field 2 Code        |   |   |

| Target Field                | Description                          | Source Field               | Transformation Logic  |
|-----------------------------|--------------------------------------|----------------------------|---|
| UDF2_DESCR                  | User Defined Field 2<br>Description  |                            |   |
| UDF3_CD                     | User Defined Field 3 Code            |                            |   |
| UDF3_DESCR                  | User Defined Field 3<br>Description  |                            |   |
| UDF4_CD                     | User Defined Field 4 Code            |                            |   |
| UDF4_DESCR                  | User Defined Field 4<br>Description  |                            |   |
| UDF5_CD                     | User Defined Field 5 Code            |                            |   |
| UDF5_DESCR                  | User Defined Field 5<br>Description  |                            |   |
| UDF6_CD                     | User Defined Field 6 Code            |                            |   |
| UDF6_DESCR                  | User Defined Field 6<br>Description  |                            |   |
| UDF7_CD                     | User Defined Field 7Code             |                            |   |
| UDF7_DESCR                  | User Defined Field 7<br>Description  |                            |   |
| UDF8_CD                     | User Defined Field 8 Code            |                            |   |
| UDF8_DESCR                  | User Defined Field 8<br>Description  |                            |   |
| UDF9_CD                     | User Defined Field 9 Code            |                            |   |
| UDF9_DESCR                  | User Defined Field 9<br>Description  |                            |   |
| UDF10_CD                    | User Defined Field 10 Code           |                            |   |
| UDF10_DESCR                 | User Defined Field 10<br>Description |                            |   |
| <b>Data Load Attributes</b> |                                      |                            |   |
| UPDATE_DTTM                 | Update Date/Time                     |                            |   |
| DATA_LOAD_DTTM              | Data Load Date/Time                  |                            | This field is populated with the load timestamp value.  |
| DATA_SOURCE_IND             | Data Source Indicator                | CI_INSTALLATION.ENV<br>_ID | This field is populated with the DSI value on the source product instance configuration. The table is populated as part of the initial setup and the DSI value is extracted from the environment ID of the source system. |

| Target Field | Description | Source Field | Transformation Logic   |
|--------------|-------------|--------------|--|
| JOB_NBR      | Job Number  |              | This field is populated with the ODI job execution session number. |

## Task Type

Holds all task types defined in the Oracle Utilities Extractors and Schema for Oracle Utilities Mobile Workforce Management system along with their class, priority, service type, and SLA details.

### Properties

| Property                   | Value               |
|----------------------------|---------------------|
| Target Table               | CD_TASK_TYPE        |
| Table Type                 | Dimension           |
| SCD Type                   | Type 1              |
| Source System Driver Table | M1_TASK_TYPE        |
| Stage Table                | STG_CD_TASK_TYPE    |
| ODI Package                | B1_PKG_CD_TASK_TYPE |
| ETL View                   | B1_D_TASK_TYPE_VW   |

### Fields

| Target Field         | Description                       | Source Field              | Transformation Logic  |
|----------------------|-----------------------------------|---------------------------|---|
| <b>Surrogate Key</b> |                                   |                           |   |
| TASK_TYPE_KEY        | Task Type Dimension Surrogate Key |                           | This field is populated from the OUBI_TASK_TYPE_SEQ sequence. |
| <b>Natural Keys</b>  |                                   |                           |   |
| TASK_TYPE_CD         | Activity Type Code                | M1_TASK_TYPE.TASK_TYPE_CD |   |
| <b>Attributes</b>    |                                   |                           |   |
| TASK_TYPE_DESCR      | Task Type Description             | M1_TASK_TYPE_L.DESCR      |   |

| Target Field                   | Description                      | Source Field  | Transformation Logic  |
|--------------------------------|----------------------------------|---|---|
| TASK_CLASS_CD                  | Task Class Code                  | M1_TASK_TYPE.TASK_CLS_FLG                                       |   |
| PRIORITY_PROF_CD               | Priority Profile Code            | M1_TASK_TYPE.PRI_PROF_CD  |   |
| SVC_CATEGORY_CD                | Service Category Code            | M1_TASK_TYPE.BO_DATA_AREA                                       | This field is populated with the service category code from the CLOB column.  |
| TASK_CLASS_DESCR               | Task Class Description           | CL_LOOKUP_VAL_L.DESCR_OVRD<br><br>CL_LOOKUP_VAL_L.DESCR         | This field is populated with description from the Lookup Language table for the TASK_CLS_FLG lookup field.<br><br>If override description is not available, regular description is extracted.                       |
| PRIORITY_PROF_DESCR            | Priority Profile Description     | M1_PRI_PROF_L.DESCR   |   |
| SVC_CATEGORY_DESCR             | Service Category Description     | F1_EXT_LOOKUP_VAL_L.DESCR_OVRD<br><br>F1_EXT_LOOKUP_VAL_L.DESCR | This field is populated with description from the Lookup Language table for the M1-ServiceCategoryLookup lookup business object.<br><br>If override description is not available, regular description is extracted. |
| RESP_TM_SLA                    | Response Time SLA                | M1_TASK_TYPE.BO_DATA_AREA                                       | This field is populated with the response time SLA from the CLOB column.  |
| <b>User Defined Attributes</b> |                                  |   |   |
| UDF1_CD                        | User Defined Field 1 Code        |   |   |
| UDF1_DESCR                     | User Defined Field 1 Description |   |   |
| UDF2_CD                        | User Defined Field 2 Code        |   |   |
| UDF2_DESCR                     | User Defined Field 2 Description |   |   |
| UDF3_CD                        | User Defined Field 3 Code        |   |   |
| UDF3_DESCR                     | User Defined Field 3 Description |   |   |
| UDF4_CD                        | User Defined Field 4 Code        |   |   |
| UDF4_DESCR                     | User Defined Field 4 Description |   |   |
| UDF5_CD                        | User Defined Field 5 Code        |   |   |

| Target Field                | Description                          | Source Field               | Transformation Logic  |
|-----------------------------|--------------------------------------|----------------------------|---|
| UDF5_DESCR                  | User Defined Field 5<br>Description  |                            |   |
| UDF6_CD                     | User Defined Field 6 Code            |                            |   |
| UDF6_DESCR                  | User Defined Field 6<br>Description  |                            |   |
| UDF7_CD                     | User Defined Field 7Code             |                            |   |
| UDF7_DESCR                  | User Defined Field 7<br>Description  |                            |   |
| UDF8_CD                     | User Defined Field 8 Code            |                            |   |
| UDF8_DESCR                  | User Defined Field 8<br>Description  |                            |   |
| UDF9_CD                     | User Defined Field 9 Code            |                            |   |
| UDF9_DESCR                  | User Defined Field 9<br>Description  |                            |   |
| UDF10_CD                    | User Defined Field 10 Code           |                            |   |
| UDF10_DESCR                 | User Defined Field 10<br>Description |                            |   |
| <b>Data Load Attributes</b> |                                      |                            |   |
| UPDATE_DTTM                 | Update Date/Time                     |                            |   |
| DATA_LOAD_DTTM              | Data Load Date/Time                  |                            | This field is populated with the load timestamp value.  |
| DATA_SOURCE_IND             | Data Source Indicator                | CI_INSTALLATION.ENV<br>_ID | This field is populated with the DSI value on the source product instance configuration. The table is populated as part of the initial setup and the DSI value is extracted from the environment ID of the source system. |
| JOB_NBR                     | Job Number                           |                            | This field is populated with the ODI job execution session number.  |

## Travel Distance Deviation

Stores the percentage ranges for deviations of actual distance relative to estimated distance traveled by the crew.

## Properties

| Property                   | Value                     |
|----------------------------|---------------------------|
| Target Table               | CD_TRAVEL_DIST_DEV        |
| Table Type                 | Dimension                 |
| SCD Type                   | Type 1                    |
| Source System Driver Table | F1_BKT_CONFIG             |
| Stage Table                | STG_CD_TRAVEL_DIST_DEV    |
| ODI Package                | B1_PKG_CD_TRAVEL_DIST_DEV |
| ETL View                   | B1_D_TRAVEL_DIST_DEV_VW   |

## Fields

| Target Field          | Description                                       | Source Field                      | Transformation Logic  |
|-----------------------|---|-----------------------------------|---|
| <b>Surrogate Key</b>  |   |                                   |   |
| TRAVEL_DIST_DEV_KEY   | Travel Distance Deviation Dimension Surrogate Key |                                   | This field is populated from the OUBI_TRAVEL_DIST_DEV_SEQ sequence.   |
| <b>Natural Keys</b>   |   |                                   |   |
| START_RANGE           | Travel Distance Deviation Start Range             | F1_BKT_CONFIG_VAL.BKT_START_RANGE | This field is populated with the bucket start range based on bucket configuration code.<br><br>The bucket configuration code from the Bucket Configuration table is retrieved based on the bucket configuration BO defined for travel distance deviation. |
| END_RANGE             | Travel Distance Deviation End Range               | F1_BKT_CONFIG_VAL.BKT_END_RANGE   | This field is populated with the bucket end range based on bucket configuration code.<br><br>The bucket configuration code from the Bucket Configuration table is retrieved based on the bucket configuration BO defined for travel distance deviation.   |
| <b>Attributes</b>     |   |                                   |   |
| TRAVEL_DIST_DEV_DESCR | Travel Distance Deviation Description             | F1_BKT_CONFIG_VAL.L.DESCR         |   |

| Target Field                   | Description                       | Source Field | Transformation Logic  |
|--------------------------------|-----------------------------------|--------------|---|
| TRAVEL_DIST_DEV_CD             | Distance Deviation Code           |              | <b>Note:</b> This field is obsolete and is not populated. The new bucket configurations based on the OUAF bucket configuration tables do not need this. |
| <b>User Defined Attributes</b> |                                   |              |   |
| UDF1_CD                        | User Defined Field 1 Code         |              |   |
| UDF1_DESCR                     | User Defined Field 1 Description  |              |   |
| UDF2_CD                        | User Defined Field 2 Code         |              |   |
| UDF2_DESCR                     | User Defined Field 2 Description  |              |   |
| UDF3_CD                        | User Defined Field 3 Code         |              |   |
| UDF3_DESCR                     | User Defined Field 3 Description  |              |   |
| UDF4_CD                        | User Defined Field 4 Code         |              |   |
| UDF4_DESCR                     | User Defined Field 4 Description  |              |   |
| UDF5_CD                        | User Defined Field 5 Code         |              |   |
| UDF5_DESCR                     | User Defined Field 5 Description  |              |   |
| UDF6_CD                        | User Defined Field 6 Code         |              |   |
| UDF6_DESCR                     | User Defined Field 6 Description  |              |   |
| UDF7_CD                        | User Defined Field 7Code          |              |   |
| UDF7_DESCR                     | User Defined Field 7 Description  |              |   |
| UDF8_CD                        | User Defined Field 8 Code         |              |   |
| UDF8_DESCR                     | User Defined Field 8 Description  |              |   |
| UDF9_CD                        | User Defined Field 9 Code         |              |   |
| UDF9_DESCR                     | User Defined Field 9 Description  |              |   |
| UDF10_CD                       | User Defined Field 10 Code        |              |   |
| UDF10_DESCR                    | User Defined Field 10 Description |              |   |



| Target Field                | Description           | Source Field           | Transformation Logic  |
|-----------------------------|-----------------------|------------------------|---|
| <b>Data Load Attributes</b> |                       |                        |   |
| UPDATE_DTTM                 | Update Date/Time      |                        |   |
| DATA_LOAD_DTTM              | Data Load Date/Time   |                        | This field is populated with the load timestamp value.  |
| DATA_SOURCE_IND             | Data Source Indicator | CI_INSTALLATION.ENV_ID | This field is populated with the DSI value on the source product instance configuration. The table is populated as part of the initial setup and the DSI value is extracted from the environment ID of the source system. |
| JOB_NBR                     | Job Number            |                        | This field is populated with the ODI job execution session number.  |

**Note:** This bucket dimension is configured as one time load only. For information about data reload, see **Reloading the Bucket Configuration** section in the *Oracle Utilities Analytics Warehouse Installation and Configuration Guide*.

## Travel Duration Deviation

Stores the percentage ranges for deviations of actual travel duration relative to estimated travel duration of crews.

### Properties

| Property                   | Value                    |
|----------------------------|--------------------------|
| Target Table               | CD_TRAVEL_DUR_DEV        |
| Table Type                 | Dimension                |
| SCD Type                   | Type 1                   |
| Source System Driver Table | F1_BKT_CONFIG            |
| Stage Table                | STG_CD_TRAVEL_DUR_DEV    |
| ODI Package                | B1_PKG_CD_TRAVEL_DUR_DEV |
| ETL View                   | B1_D_TRAVEL_DUR_DEV_VW   |

### Fields

| Target Field         | Description | Source Field | Transformation Logic |
|----------------------|-------------|--------------|----------------------|
| <b>Surrogate Key</b> |             |              |                      |

| Target Field                   | Description                                       | Source Field                      | Transformation Logic   |
|--------------------------------|---|-----------------------------------|--|
| TRAVEL_DUR_DEV_KEY             | Travel Duration Deviation Dimension Surrogate Key |                                   | This field is populated from the OUBI_TRAVEL_DUR_DEV_SEQ sequence.   |
| <b>Natural Keys</b>            |   |                                   |  |
| START_RANGE                    | Travel Duration Deviation Start Range             | F1_BKT_CONFIG_VAL.BKT_START_RANGE | <p>This field is populated with the bucket start range based on bucket configuration code.</p> <p>The bucket configuration code from the Bucket Configuration table is retrieved based on the bucket configuration BO defined for travel duration deviation.</p> |
| END_RANGE                      | Travel Duration Deviation End Range               | F1_BKT_CONFIG_VAL.BKT_END_RANGE   | <p>The field is populated with the bucket end range based on bucket configuration code.</p> <p>The bucket configuration code from the Bucket Configuration table is retrieved based on the bucket configuration BO defined for travel duration deviation.</p>    |
| <b>Attributes</b>              |   |                                   |  |
| TRAVEL_DUR_DEV_DESCR           | Travel Duration Deviation                         | F1_BKT_CONFIG_VAL.L.DESCR         |  |
| TRAVEL_DUR_DEV_CD              | Travel Duration Deviation Code                    |                                   | <b>Note:</b> This field is obsolete and will not be populated. The new bucket configurations based on the OUAF bucket configuration tables do not need this.   |
| <b>User Defined Attributes</b> |   |                                   |  |
| UDF1_CD                        | User Defined Field 1 Code                         |                                   |  |
| UDF1_DESCR                     | User Defined Field 1 Description                  |                                   |  |
| UDF2_CD                        | User Defined Field 2 Code                         |                                   |  |
| UDF2_DESCR                     | User Defined Field 2 Description                  |                                   |  |
| UDF3_CD                        | User Defined Field 3 Code                         |                                   |  |
| UDF3_DESCR                     | User Defined Field 3 Description                  |                                   |  |

| Target Field                | Description                       | Source Field           | Transformation Logic  |
|-----------------------------|-----------------------------------|------------------------|---|
| UDF4_CD                     | User Defined Field 4 Code         |                        |   |
| UDF4_DESCR                  | User Defined Field 4 Description  |                        |   |
| UDF5_CD                     | User Defined Field 5 Code         |                        |   |
| UDF5_DESCR                  | User Defined Field 5 Description  |                        |   |
| UDF6_CD                     | User Defined Field 6 Code         |                        |   |
| UDF6_DESCR                  | User Defined Field 6 Description  |                        |   |
| UDF7_CD                     | User Defined Field 7Code          |                        |   |
| UDF7_DESCR                  | User Defined Field 7 Description  |                        |   |
| UDF8_CD                     | User Defined Field 8 Code         |                        |   |
| UDF8_DESCR                  | User Defined Field 8 Description  |                        |   |
| UDF9_CD                     | User Defined Field 9 Code         |                        |   |
| UDF9_DESCR                  | User Defined Field 9 Description  |                        |   |
| UDF10_CD                    | User Defined Field 10 Code        |                        |   |
| UDF10_DESCR                 | User Defined Field 10 Description |                        |   |
| <b>Data Load Attributes</b> |                                   |                        |   |
| UPDATE_DTTM                 | Update Date/Time                  |                        |   |
| DATA_LOAD_DTTM              | Data Load Date/Time               |                        | This field is populated with the load timestamp value.  |
| DATA_SOURCE_IND             | Data Source Indicator             | CI_INSTALLATION.ENV_ID | This field is populated with the DSI value on the source product instance configuration. The table is populated as part of the initial setup and the DSI value is extracted from the environment ID of the source system. |
| JOB_NBR                     | Job Number                        |                        | This field is populated with the ODI job execution session number.  |

**Note:** This bucket dimension is configured as one time load only. For information about data reload, see the **Reloading the Bucket Configuration** section in the *Oracle Utilities Analytics Warehouse Installation and Configuration Guide*.

## Work Duration Deviation

Stores the percentage ranges for deviations in actual work duration relative to estimated work duration of activities.

### Properties

| Property                   | Value                  |
|----------------------------|------------------------|
| Target Table               | CD_WORK_DUR_DEV        |
| Table Type                 | Dimension              |
| SCD Type                   | Type 1                 |
| Source System Driver Table | F1_BKT_CONFIG          |
| Stage Table                | STG_CD_WORK_DUR_DEV    |
| ODI Package                | B1_PKG_CD_WORK_DUR_DEV |
| ETL View                   | B1_D_WORK_DUR_DEV_VW   |

### Fields

| Target Field         | Description  | Source Field                         | Transformation Logic   |
|----------------------|--|--------------------------------------|--|
| <b>Surrogate Key</b> |  |                                      |  |
| WORK_DUR_DEV_KEY     | Work Duration Deviation<br>Dimension Surrogate Key |                                      | This field is populated from the<br>OUBI_WORK_DUR_DEV_SEQ<br>sequence.   |
| <b>Natural Keys</b>  |  |                                      |  |
| START_RANGE          | Work Duration Deviation<br>Start Range             | F1_BKT_CONFIG_VALB<br>KT_START_RANGE | This field is populated with the<br>bucket start range based on<br>bucket configuration code.<br><br>The bucket configuration code<br>from the Bucket Configuration<br>table is retrieved based on the<br>bucket configuration BO<br>defined for work duration<br>deviation. |

| Target Field                   | Description                            | Source Field                        | Transformation Logic   |
|--------------------------------|--|-------------------------------------|--|
| END_RANGE                      | Work Duration Deviation<br>End Range   | F1_BKT_CONFIG_VAL.B<br>KT_END_RANGE | The field is populated with the bucket end range based on bucket configuration code.<br><br>The bucket configuration code from the Bucket Configuration table is retrieved based on the bucket configuration BO defined for work duration deviation. |
| <b>Attributes</b>              |  |                                     |  |
| WORK_DUR_DEV_<br>DESCR         | Work Duration Deviation<br>Description | F1_BKT_CONFIG_VAL_<br>L.DESCR       |  |
| WORK_DUR_DEV_CD                | Work Duration Deviation<br>Code        |                                     | <b>Note:</b> This field is obsolete and is not populated. The new bucket configurations based on the OUAF bucket configuration tables do not need this.  |
| <b>User Defined Attributes</b> |  |                                     |  |
| UDF1_CD                        | User Defined Field 1 Code              |                                     |  |
| UDF1_DESCR                     | User Defined Field 1<br>Description    |                                     |  |
| UDF2_CD                        | User Defined Field 2 Code              |                                     |  |
| UDF2_DESCR                     | User Defined Field 2<br>Description    |                                     |  |
| UDF3_CD                        | User Defined Field 3 Code              |                                     |  |
| UDF3_DESCR                     | User Defined Field 3<br>Description    |                                     |  |
| UDF4_CD                        | User Defined Field 4 Code              |                                     |  |
| UDF4_DESCR                     | User Defined Field 4<br>Description    |                                     |  |
| UDF5_CD                        | User Defined Field 5 Code              |                                     |  |
| UDF5_DESCR                     | User Defined Field 5<br>Description    |                                     |  |
| UDF6_CD                        | User Defined Field 6 Code              |                                     |  |
| UDF6_DESCR                     | User Defined Field 6<br>Description    |                                     |  |
| UDF7_CD                        | User Defined Field 7Code               |                                     |  |
| UDF7_DESCR                     | User Defined Field 7<br>Description    |                                     |  |

| Target Field                | Description                       | Source Field           | Transformation Logic  |
|-----------------------------|-----------------------------------|------------------------|---|
| UDF8_CD                     | User Defined Field 8 Code         |                        |   |
| UDF8_DESCR                  | User Defined Field 8 Description  |                        |   |
| UDF9_CD                     | User Defined Field 9 Code         |                        |   |
| UDF9_DESCR                  | User Defined Field 9 Description  |                        |   |
| UDF10_CD                    | User Defined Field 10 Code        |                        |   |
| UDF10_DESCR                 | User Defined Field 10 Description |                        |   |
| <b>Data Load Attributes</b> |                                   |                        |   |
| UPDATE_DTTM                 | Update Date/Time                  |                        |   |
| DATA_LOAD_DTTM              | Data Load Date/Time               |                        | This field is populated with the load timestamp value.  |
| DATA_SOURCE_IND             | Data Source Indicator             | CI_INSTALLATION.ENV_ID | This field is populated with the DSI value on the source product instance configuration. The table is populated as part of the initial setup and the DSI value is extracted from the environment ID of the source system. |
| JOB_NBR                     | Job Number                        |                        | This field is populated with the ODI job execution session number.  |

**Note:** This bucket dimension is configured as one time load only. For information about data reload, see the **Reloading the Bucket Configuration** section in *Oracle Utilities Analytics Warehouse Installation and Configuration Guide*.

---

## Shared Dimensions

The dimensions that are used in the star schemas of other source products as well are called the **shared** dimensions. The other products also populate these shared dimensions with their data. The data source indicator (DSI) column plays a vital role in identifying the records belonging to a specific source product.

### Account

Though Account dimension is referenced in the Oracle Utilities Mobile Workforce Management facts, it is populated only by the Oracle Utilities Customer Care and Billing source product. The ETL processes of the Oracle Utilities Mobile Workforce Management facts map this dimension based on the integration between Oracle Utilities Mobile Workforce Management and Oracle Utilities Customer Care and Billing.

Since this dimension is not populated by Oracle Utilities Mobile Workforce Management, the source mapping details are not provided in the document. See the *Oracle Utilities Extractors and Schema for Oracle Utilities Customer Care and Billing* for the mapping details.

### Address

Includes a record for every address (such as location, task, POU, and resources) defined in the Oracle Utilities Mobile Workforce Management system.

This dimension is also populated by Oracle Utilities Operational Device Management, Oracle Utilities Meter Data Management, Oracle Utilities Customer Care and Billing, Oracle Utilities Network Management System, and Oracle Utilities Work and Asset Management.

## Properties

| Property                   | Value   |
|----------------------------|---|
| Target Table               | CD_ADDR   |
| Table Type                 | Dimension   |
| SCD Type                   | Type 2  |
| Source System Driver Table | M1_TASK_ADDR<br>M1_LOCATION<br>M1_POU<br>M1_RESRC |
| Stage Table                | STG_CD_ADDR                                       |
| ODI Package                | B1_PKG_CD_ADDR                                    |
| ETL View                   | B1_D_ADDR_VW                                      |

## Fields

### Source 1 - Task Address (M1\_TASK\_ADDR)

| Target Field         | Description                        | Source Field | Transformation Logic                                    |
|----------------------|------------------------------------|--------------|---|
| <b>Surrogate Key</b> |                                    |              |   |
| ADDR_KEY             | Address Dimension<br>Surrogate Key |              | This field is populated from the SPL_ADDR_SEQ sequence. |



| Target Field        | Description         | Source Field  | Transformation Logic   |
|---------------------|---------------------|---|--|
| <b>Natural Keys</b> |                     |   |  |
| SRC_ADDR_ID         | Premise ID          | M1_TASK_ADDR.ADDR<br>ESS1<br><br>M1_TASK_ADDR.ADDR<br>ESS2<br><br>M1_TASK_ADDR.ADDR<br>ESS3<br><br>M1_TASK_ADDR.ADDR<br>ESS4<br><br>M1_TASK_ADDR.CROSS<br>_STREET<br><br>M1_TASK_ADDR.SUBUR<br>B<br><br>M1_TASK_ADDR.CITY<br><br>M1_TASK_ADDR.COUN<br>TY<br><br>M1_TASK_ADDR.STATE<br><br>M1_TASK_ADDR.POSTA<br>L<br>M1_TASK_ADDR.COUN<br>TRY | This natural key is the concatenation of all address attributes, in uppercase.   |
| <b>Attributes</b>   |                     |   |  |
| ADDR_LINE1          | Address Line 1      | M1_TASK_ADDR.ADDR<br>ESS1   |  |
| ADDR_LINE2          | Address Line 2      | M1_TASK_ADDR.ADDR<br>ESS2   |  |
| ADDR_LINE3          | Address Line 3      | M1_TASK_ADDR.ADDR<br>ESS3   |  |
| ADDR_LINE4          | Address Line 4      | M1_TASK_ADDR.ADDR<br>ESS4   |  |
| ADDR_INFO           | Address Information | M1_TASK_ADDR.ADDR<br>ESS1<br><br>M1_TASK_ADDR.CITY<br><br>M1_TASK_ADDR.STATE<br><br>M1_TASK_ADDR.POSTA<br>L   | This field is populated from the Task Address table based on the concatenation of the address, city, state, and postal code. |

| Target Field                   | Description         | Source Field                  | Transformation Logic |
|--------------------------------|---------------------|-------------------------------|----------------------|
| CITY                           | City                | M1_TASK_ADDR.UPPER<br>(CITY)  |                      |
| COUNTY                         | County              | M1_TASK_ADDR.COUN<br>TY       |                      |
| POSTAL                         | Postal Code         | M1_TASK_ADDR.POSTA<br>L       |                      |
| STATE_DESCR                    | State Description   | CL_STATE_L.DESCR              |                      |
| COUNTRY_DESCR                  | Country Description | CL_COUNTRY_L.DESCR            |                      |
| CROSS_STREET                   | Cross Street        | M1_TASK_ADDR.CROSS<br>_STREET |                      |
| SUBURB                         | Suburb              | M1_TASK_ADDR.SUBUR<br>B       |                      |
| STATE_CD                       | State Code          | M1_TASK_ADDR.STATE            |                      |
| COUNTRY_CD                     | Country Code        | M1_TASK_ADDR.COUN<br>TRY      |                      |
| GEO_CODE                       | Geographical Code   |                               |                      |
| <b>User Defined Attributes</b> |                     |                               |                      |
| UDF1_CD                        | City Code           | M1_TASK_ADDR.UPPER<br>(CITY)  |                      |
| UDF1_DESCR                     | City Description    | M1_TASK_ADDR.UPPER<br>(CITY)  |                      |
| UDF2_CD                        | County Code         | M1_TASK_ADDR.COUN<br>TY       |                      |
| UDF2_DESCR                     | County Description  | M1_TASK_ADDR.COUN<br>TY       |                      |
| UDF3_CD                        | Postal Code         | M1_TASK_ADDR.POSTA<br>L       |                      |
| UDF3_DESCR                     | Postal Code         | M1_TASK_ADDR.POSTA<br>L       |                      |
| UDF4_CD                        | State Code          | M1_TASK_ADDR.STATE            |                      |
| UDF4_DESCR                     | State Description   | CL_STATE_L.DESCR              |                      |
| UDF5_CD                        | Country Code        | M1_TASK_ADDR.COUN<br>TRY      |                      |
| UDF5_DESCR                     | Country Description | CL_COUNTRY_L.DESCR            |                      |
| UDF6_CD                        | Geo Code Value      |                               |                      |
| UDF6_DESCR                     | Geo Code            |                               |                      |
| UDF7_CD                        | Premise Char 1 Code |                               |                      |
| UDF7_DESCR                     | Premise Char 1      |                               |                      |

| Target Field | Description                          | Source Field | Transformation Logic |
|--------------|--------------------------------------|--------------|----------------------|
| UDF8_CD      | Premise Char 2 Code                  |              |                      |
| UDF8_DESCR   | Premise Char 2                       |              |                      |
| UDF9_CD      | Premise Char 3 Code                  |              |                      |
| UDF9_DESCR   | Premise Char 3                       |              |                      |
| UDF10_CD     | Premise Char 4 Code                  |              |                      |
| UDF10_DESCR  | Premise Char 4 Code                  |              |                      |
| UDF11_CD     | User Defined Field 11 Code           |              |                      |
| UDF11_DESCR  | User Defined Field 11<br>Description |              |                      |
| UDF12_CD     | User Defined Field 12 Code           |              |                      |
| UDF12_DESCR  | User Defined Field 12<br>Description |              |                      |
| UDF13_CD     | User Defined Field 13 Code           |              |                      |
| UDF13_DESCR  | User Defined Field 13<br>Description |              |                      |
| UDF14_CD     | User Defined Field 14 Code           |              |                      |
| UDF14_DESCR  | User Defined Field 14<br>Description |              |                      |
| UDF15_CD     | User Defined Field 15 Code           |              |                      |
| UDF15_DESCR  | User Defined Field 15<br>Description |              |                      |
| UDF16_CD     | User Defined Field 16 Code           |              |                      |
| UDF16_DESCR  | User Defined Field 16<br>Description |              |                      |
| UDF1_NUM     | User Defined Field 1<br>Number       |              |                      |
| UDF2_NUM     | User Defined Field 2<br>Number       |              |                      |
| UDF3_NUM     | User Defined Field 3<br>Number       |              |                      |
| UDF4_NUM     | User Defined Field 4<br>Number       |              |                      |
| UDF5_NUM     | User Defined Field 5<br>Number       |              |                      |
| UDF6_NUM     | User Defined Field 6<br>Number       |              |                      |
| UDF7_NUM     | User Defined Field 7<br>Number       |              |                      |

| Target Field                | Description                  | Source Field | Transformation Logic                                   |
|-----------------------------|------------------------------|--------------|--|
| UDF8_NUM                    | User Defined Field 8 Number  |              |  |
| UDF9_NUM                    | User Defined Field 9 Number  |              |  |
| UDF10_NUM                   | User Defined Field 10 Number |              |  |
| UDF1_DATE                   | User Defined Field 1 Date    |              |  |
| UDF2_DATE                   | User Defined Field 2 Date    |              |  |
| UDF3_DATE                   | User Defined Field 3 Date    |              |  |
| UDF4_DATE                   | User Defined Field 4 Date    |              |  |
| UDF5_DATE                   | User Defined Field 5 Date    |              |  |
| UDF6_DATE                   | User Defined Field 6 Date    |              |  |
| UDF7_DATE                   | User Defined Field 7 Date    |              |  |
| UDF8_DATE                   | User Defined Field 8 Date    |              |  |
| UDF9_DATE                   | User Defined Field 9 Date    |              |  |
| UDF10_DATE                  | User Defined Field 10 Date   |              |  |
| FLEXFIELD1                  | Flex Field 1                 |              |  |
| FLEXFIELD2                  | Flex Field 2                 |              |  |
| FLEXFIELD3                  | Flex Field 3                 |              |  |
| FLEXFIELD4                  | Flex Field 4                 |              |  |
| FLEXFIELD5                  | Flex Field 5                 |              |  |
| FLEXFIELD6                  | Flex Field 6                 |              |  |
| FLEXFIELD7                  | Flex Field 7                 |              |  |
| FLEXFIELD8                  | Flex Field 8                 |              |  |
| FLEXFIELD9                  | Flex Field 9                 |              |  |
| FLEXFIELD10                 | Flex Field 10                |              |  |
| <b>Data Load Attributes</b> |                              |              |  |
| EFF_END_DTTM                | Effective End Date/Time      |              |  |
| EFF_START_DTTM              | Effective Start Date/Time    |              |  |
| DATA_LOAD_DTTM              | Data Load Date/Time          |              | This field is populated with the load timestamp value. |

| Target Field    | Description           | Source Field           | Transformation Logic  |
|-----------------|-----------------------|------------------------|---|
| DATA_SOURCE_IND | Data Source Indicator | CI_INSTALLATION.ENV_ID | This field is populated with the DSI value on the source product instance configuration. The table is populated as part of the initial setup and the DSI value is extracted from the environment ID of the source system. |
| JOB_NBR         | Job Number            |                        | This field is populated with the ODI job execution session number.  |

### Source 2 - Location (M1\_LOCATION)

| Target Field         | Description                        | Source Field  | Transformation Logic   |
|----------------------|------------------------------------|---|--|
| <b>Surrogate Key</b> |                                    |   |  |
| ADDR_KEY             | Address Dimension<br>Surrogate Key |   | This field is populated from the SPL_ADDR_SEQ sequence.                        |
| <b>Natural Keys</b>  |                                    |   |  |
| SRC_ADDR_ID          | Premise ID                         | M1_LOCATION.ADDRESS1<br>M1_LOCATION.ADDRESS2<br>M1_LOCATION.ADDRESS3<br>M1_LOCATION.ADDRESS4<br>M1_LOCATION.CROSS_STREET<br>M1_LOCATION.SUBURB<br>M1_LOCATION.CITY<br>M1_LOCATION.COUNTY<br>M1_LOCATION.STATE<br>M1_LOCATION.POSTAL<br>M1_LOCATION.COUNTY | This natural key is the concatenation of all address attributes, in uppercase. |

| Target Field                   | Description         | Source Field  | Transformation Logic   |
|--------------------------------|---------------------|---|--|
| <b>Attributes</b>              |                     |   |  |
| ADDR_LINE1                     | Address Line 1      | M1_LOCATION.ADDRESS1  |  |
| ADDR_LINE2                     | Address Line 2      | M1_LOCATION.ADDRESS2  |  |
| ADDR_LINE3                     | Address Line 3      | M1_LOCATION.ADDRESS3  |  |
| ADDR_LINE4                     | Address Line 4      | M1_LOCATION.ADDRESS4  |  |
| ADDR_INFO                      | Address Information | M1_LOCATION.ADDRESS1<br>M1_LOCATION.CITY<br>M1_LOCATION.STATE<br>M1_LOCATION.POSTAL | This field is populated from the Location table based on the concatenation of the address, city, state, and postal code. |
| CITY                           | City                | M1_LOCATION.UPPER(CITY)   |  |
| COUNTY                         | County              | M1_LOCATION.COUNTY  |  |
| POSTAL                         | Postal Code         | M1_LOCATION.POSTAL  |  |
| STATE_DESCR                    | State Description   | CL_STATE_L.DESCR  |  |
| COUNTRY_DESCR                  | Country Description | CL_COUNTRY_L.DESCR  |  |
| CROSS_STREET                   | Cross Street        | M1_LOCATION.CROSS_STREET  |  |
| SUBURB                         | Suburb              | M1_LOCATION.SUBURB  |  |
| STATE_CD                       | State Code          | M1_LOCATION.STATE   |  |
| COUNTRY_CD                     | Country Code        | M1_LOCATION.COUNTRY   |  |
| GEO_CODE                       | Geographical Code   |   |  |
| <b>User Defined Attributes</b> |                     |   |  |
| UDF1_CD                        | City Code           | M1_LOCATION.UPPER(CITY)   |  |
| UDF1_DESCR                     | City Description    | M1_LOCATION.UPPER(CITY)   |  |
| UDF2_CD                        | County Code         | M1_LOCATION.COUNTY  |  |
| UDF2_DESCR                     | County Description  | M1_LOCATION.COUNTY  |  |

| Target Field | Description                          | Source Field        | Transformation Logic |
|--------------|--------------------------------------|---------------------|----------------------|
| UDF3_CD      | Postal Code                          | M1_LOCATION.POSTAL  |                      |
| UDF3_DESCR   | Postal Code                          | M1_LOCATION.POSTAL  |                      |
| UDF4_CD      | State Code                           | M1_LOCATION.STATE   |                      |
| UDF4_DESCR   | State Description                    | CL_STATE_L.DESCR    |                      |
| UDF5_CD      | Country Code                         | M1_LOCATION.COUNTRY |                      |
| UDF5_DESCR   | Country Description                  | CL_COUNTRY_L.DESCR  |                      |
| UDF6_CD      | Geo Code Value                       |                     |                      |
| UDF6_DESCR   | Geo Code                             |                     |                      |
| UDF7_CD      | Premise Char 1 Code                  |                     |                      |
| UDF7_DESCR   | Premise Char 1                       |                     |                      |
| UDF8_CD      | Premise Char 2 Code                  |                     |                      |
| UDF8_DESCR   | Premise Char 2                       |                     |                      |
| UDF9_CD      | Premise Char 3 Code                  |                     |                      |
| UDF9_DESCR   | Premise Char 3                       |                     |                      |
| UDF10_CD     | Premise Char 4 Code                  |                     |                      |
| UDF10_DESCR  | Premise Char 4 Code                  |                     |                      |
| UDF11_CD     | User Defined Field 11 Code           |                     |                      |
| UDF11_DESCR  | User Defined Field 11<br>Description |                     |                      |
| UDF12_CD     | User Defined Field 12 Code           |                     |                      |
| UDF12_DESCR  | User Defined Field 12<br>Description |                     |                      |
| UDF13_CD     | User Defined Field 13 Code           |                     |                      |
| UDF13_DESCR  | User Defined Field 13<br>Description |                     |                      |
| UDF14_CD     | User Defined Field 14 Code           |                     |                      |
| UDF14_DESCR  | User Defined Field 14<br>Description |                     |                      |
| UDF15_CD     | User Defined Field 15 Code           |                     |                      |
| UDF15_DESCR  | User Defined Field 15<br>Description |                     |                      |
| UDF16_CD     | User Defined Field 16 Code           |                     |                      |
| UDF16_DESCR  | User Defined Field 16<br>Description |                     |                      |

| Target Field | Description                     | Source Field | Transformation Logic |
|--------------|---------------------------------|--------------|----------------------|
| UDF1_NUM     | User Defined Field 1<br>Number  |              |                      |
| UDF2_NUM     | User Defined Field 2<br>Number  |              |                      |
| UDF3_NUM     | User Defined Field 3<br>Number  |              |                      |
| UDF4_NUM     | User Defined Field 4<br>Number  |              |                      |
| UDF5_NUM     | User Defined Field 5<br>Number  |              |                      |
| UDF6_NUM     | User Defined Field 6<br>Number  |              |                      |
| UDF7_NUM     | User Defined Field 7<br>Number  |              |                      |
| UDF8_NUM     | User Defined Field 8<br>Number  |              |                      |
| UDF9_NUM     | User Defined Field 9<br>Number  |              |                      |
| UDF10_NUM    | User Defined Field 10<br>Number |              |                      |
| UDF1_DATE    | User Defined Field 1 Date       |              |                      |
| UDF2_DATE    | User Defined Field 2 Date       |              |                      |
| UDF3_DATE    | User Defined Field 3 Date       |              |                      |
| UDF4_DATE    | User Defined Field 4 Date       |              |                      |
| UDF5_DATE    | User Defined Field 5 Date       |              |                      |
| UDF6_DATE    | User Defined Field 6 Date       |              |                      |
| UDF7_DATE    | User Defined Field 7 Date       |              |                      |
| UDF8_DATE    | User Defined Field 8 Date       |              |                      |
| UDF9_DATE    | User Defined Field 9 Date       |              |                      |
| UDF10_DATE   | User Defined Field 10 Date      |              |                      |
| FLEXFIELD1   | Flex Field 1                    |              |                      |
| FLEXFIELD2   | Flex Field 2                    |              |                      |
| FLEXFIELD3   | Flex Field 3                    |              |                      |
| FLEXFIELD4   | Flex Field 4                    |              |                      |
| FLEXFIELD5   | Flex Field 5                    |              |                      |
| FLEXFIELD6   | Flex Field 6                    |              |                      |
| FLEXFIELD7   | Flex Field 7                    |              |                      |



| Target Field                | Description               | Source Field           | Transformation Logic  |
|-----------------------------|---------------------------|------------------------|---|
| FLEXFIELD8                  | Flex Field 8              |                        |   |
| FLEXFIELD9                  | Flex Field 9              |                        |   |
| FLEXFIELD10                 | Flex Field 10             |                        |   |
| <b>Data Load Attributes</b> |                           |                        |   |
| EFF_END_DTTM                | Effective End Date/Time   |                        |   |
| EFF_START_DTTM              | Effective Start Date/Time |                        |   |
| DATA_LOAD_DTTM              | Data Load Date/Time       |                        | This field is populated with the load timestamp value.  |
| DATA_SOURCE_IND             | Data Source Indicator     | CL_INSTALLATION.ENV_ID | This field is populated with the DSI value on the source product instance configuration. The table is populated as part of the initial setup and the DSI value is extracted from the environment ID of the source system. |
| JOB_NBR                     | Job Number                |                        | This field is populated with the ODI job execution session number.  |

### Source 3 - POU (M1\_POU)

| Target Field         | Description                        | Source Field | Transformation Logic                                    |
|----------------------|------------------------------------|--------------|---|
| <b>Surrogate Key</b> |                                    |              |   |
| ADDR_KEY             | Address Dimension<br>Surrogate Key |              | This field is populated from the SPL_ADDR_SEQ sequence. |

| Target Field        | Description         | Source Field  | Transformation Logic  |
|---------------------|---------------------|---|---|
| <b>Natural Keys</b> |                     |   |   |
| SRC_ADDR_ID         | Premise ID          | M1_POU.ADDRESS1   | This natural key is the concatenation of all address attributes, in uppercase.                                      |
|                     |                     | M1_POU.ADDRESS2   |   |
|                     |                     | M1_POU.ADDRESS3   |   |
|                     |                     | M1_POU.ADDRESS4   |   |
|                     |                     | M1_POU.CROSS_STREET   |   |
|                     |                     | M1_POU.SUBURB   |   |
|                     |                     | M1_POU.CITY   |   |
|                     |                     | M1_POU.COUNTY   |   |
|                     |                     | M1_POU.STATE  |   |
|                     |                     | M1_POU.POSTAL   |   |
| M1_POU.COUNTRY      |                     |   |   |
| <b>Attributes</b>   |                     |   |   |
| ADDR_LINE1          | Address Line 1      | M1_POU.ADDRESS1   |   |
| ADDR_LINE2          | Address Line 2      | M1_POU.ADDRESS2   |   |
| ADDR_LINE3          | Address Line 3      | M1_POU.ADDRESS3   |   |
| ADDR_LINE4          | Address Line 4      | M1_POU.ADDRESS4   |   |
| ADDR_INFO           | Address Information | M1_POU.ADDRESS1<br>M1_POU.CITY<br>M1_POU.STATE<br>M1_POU.POSTAL | This field is populated from the POU table based on the concatenation of the address, city, state, and postal code. |
| CITY                | City                | M1_POU.UPPER(CITY)  |   |
| COUNTY              | County              | M1_POU.COUNTY   |   |
| POSTAL              | Postal Code         | M1_POU.POSTAL   |   |
| STATE_DESCR         | State Description   | CL_STATE_L.DESCR  |   |
| COUNTRY_DESCR       | Country Description | CL_COUNTRY_L.DESCR  |   |
| CROSS_STREET        | Cross Street        | M1_POU.CROSS_STREET   |   |
| SUBURB              | Suburb              | M1_POU.SUBURB   |   |

| Target Field                   | Description                          | Source Field       | Transformation Logic |
|--------------------------------|--------------------------------------|--------------------|----------------------|
| STATE_CD                       | State Code                           | M1_POU.STATE       |                      |
| COUNTRY_CD                     | Country Code                         | M1_POU.COUNTRY     |                      |
| GEO_CODE                       | Geographical Code                    |                    |                      |
| <b>User Defined Attributes</b> |                                      |                    |                      |
| UDF1_CD                        | City Code                            | M1_POU.UPPER(CITY) |                      |
| UDF1_DESCR                     | City Description                     | M1_POU.UPPER(CITY) |                      |
| UDF2_CD                        | County Code                          | M1_POU.COUNTY      |                      |
| UDF2_DESCR                     | County Description                   | M1_POU.COUNTY      |                      |
| UDF3_CD                        | Postal Code                          | M1_POU.POSTAL      |                      |
| UDF3_DESCR                     | Postal Code Description              | M1_POU.POSTAL      |                      |
| UDF4_CD                        | State Code                           | M1_POU.STATE       |                      |
| UDF4_DESCR                     | State Description                    | CL_STATE_L.DESCR   |                      |
| UDF5_CD                        | Country Code                         | M1_POU.COUNTRY     |                      |
| UDF5_DESCR                     | Country Description                  | CL_COUNTRY_L.DESCR |                      |
| UDF6_CD                        | Geo Code Value                       |                    |                      |
| UDF6_DESCR                     | Geo Code                             |                    |                      |
| UDF7_CD                        | Premise Char 1 Code                  |                    |                      |
| UDF7_DESCR                     | Premise Char 1                       |                    |                      |
| UDF8_CD                        | Premise Char 2 Code                  |                    |                      |
| UDF8_DESCR                     | Premise Char 2                       |                    |                      |
| UDF9_CD                        | Premise Char 3 Code                  |                    |                      |
| UDF9_DESCR                     | Premise Char 3                       |                    |                      |
| UDF10_CD                       | Premise Char 4 Code                  |                    |                      |
| UDF10_DESCR                    | Premise Char 4 Code                  |                    |                      |
| UDF11_CD                       | User Defined Field 11 Code           |                    |                      |
| UDF11_DESCR                    | User Defined Field 11<br>Description |                    |                      |
| UDF12_CD                       | User Defined Field 12 Code           |                    |                      |
| UDF12_DESCR                    | User Defined Field 12<br>Description |                    |                      |
| UDF13_CD                       | User Defined Field 13 Code           |                    |                      |
| UDF13_DESCR                    | User Defined Field 13<br>Description |                    |                      |
| UDF14_CD                       | User Defined Field 14 Code           |                    |                      |

| Target Field | Description                          | Source Field | Transformation Logic |
|--------------|--------------------------------------|--------------|----------------------|
| UDF14_DESCR  | User Defined Field 14<br>Description |              |                      |
| UDF15_CD     | User Defined Field 15 Code           |              |                      |
| UDF15_DESCR  | User Defined Field 15<br>Description |              |                      |
| UDF16_CD     | User Defined Field 16 Code           |              |                      |
| UDF16_DESCR  | User Defined Field 16<br>Description |              |                      |
| UDF1_NUM     | User Defined Field 1<br>Number       |              |                      |
| UDF2_NUM     | User Defined Field 2<br>Number       |              |                      |
| UDF3_NUM     | User Defined Field 3<br>Number       |              |                      |
| UDF4_NUM     | User Defined Field 4<br>Number       |              |                      |
| UDF5_NUM     | User Defined Field 5<br>Number       |              |                      |
| UDF6_NUM     | User Defined Field 6<br>Number       |              |                      |
| UDF7_NUM     | User Defined Field 7<br>Number       |              |                      |
| UDF8_NUM     | User Defined Field 8<br>Number       |              |                      |
| UDF9_NUM     | User Defined Field 9<br>Number       |              |                      |
| UDF10_NUM    | User Defined Field 10<br>Number      |              |                      |
| UDF1_DATE    | User Defined Field 1 Date            |              |                      |
| UDF2_DATE    | User Defined Field 2 Date            |              |                      |
| UDF3_DATE    | User Defined Field 3 Date            |              |                      |
| UDF4_DATE    | User Defined Field 4 Date            |              |                      |
| UDF5_DATE    | User Defined Field 5 Date            |              |                      |
| UDF6_DATE    | User Defined Field 6 Date            |              |                      |
| UDF7_DATE    | User Defined Field 7 Date            |              |                      |
| UDF8_DATE    | User Defined Field 8 Date            |              |                      |
| UDF9_DATE    | User Defined Field 9 Date            |              |                      |
| UDF10_DATE   | User Defined Field 10 Date           |              |                      |

| Target Field                | Description               | Source Field           | Transformation Logic  |
|-----------------------------|---------------------------|------------------------|---|
| FLEXFIELD1                  | Flex Field 1              |                        |   |
| FLEXFIELD2                  | Flex Field 2              |                        |   |
| FLEXFIELD3                  | Flex Field 3              |                        |   |
| FLEXFIELD4                  | Flex Field 4              |                        |   |
| FLEXFIELD5                  | Flex Field 5              |                        |   |
| FLEXFIELD6                  | Flex Field 6              |                        |   |
| FLEXFIELD7                  | Flex Field 7              |                        |   |
| FLEXFIELD8                  | Flex Field 8              |                        |   |
| FLEXFIELD9                  | Flex Field 9              |                        |   |
| FLEXFIELD10                 | Flex Field 10             |                        |   |
| <b>Data Load Attributes</b> |                           |                        |   |
| EFF_END_DTTM                | Effective End Date/Time   |                        |   |
| EFF_START_DTTM              | Effective Start Date/Time |                        |   |
| DATA_LOAD_DTTM              | Data Load Date/Time       |                        | This field is populated with the load timestamp value.  |
| DATA_SOURCE_IND             | Data Source Indicator     | CI_INSTALLATION.ENV_ID | This field is populated with the DSI value on the source product instance configuration. The table is populated as part of the initial setup and the DSI value is extracted from the environment ID of the source system. |
| JOB_NBR                     | Job Number                |                        | This field is populated with the ODI job execution session number.  |

#### Source 4 - Resource (M1\_RESRC)

| Target Field         | Description                        | Source Field          | Transformation Logic   |
|----------------------|------------------------------------|-----------------------|--|
| <b>Surrogate Key</b> |                                    |                       |  |
| ADDR_KEY             | Address Dimension<br>Surrogate Key |                       | This field is populated from the SPL_ADDR_SEQ sequence.                        |
| <b>Natural Keys</b>  |                                    |                       |  |
| SRC_ADDR_ID          | Premise ID                         | M1_RESRC.BO_DATA_AREA | This natural key is the concatenation of all address attributes, in uppercase. |

| Target Field                   | Description         | Source Field          | Transformation Logic   |
|--------------------------------|---------------------|-----------------------|--|
| <b>Attributes</b>              |                     |                       |  |
| ADDR_LINE1                     | Address Line 1      | M1_RESRC.BO_DATA_AREA |  |
| ADDR_LINE2                     | Address Line 2      | M1_RESRC.BO_DATA_AREA |  |
| ADDR_LINE3                     | Address Line 3      | M1_RESRC.BO_DATA_AREA |  |
| ADDR_LINE4                     | Address Line 4      | M1_RESRC.BO_DATA_AREA |  |
| ADDR_INFO                      | Address Information | M1_RESRC.BO_DATA_AREA | This field is populated from the Task Address table based on the concatenation of the address, city, state, and postal code. |
| CITY                           | City                | M1_RESRC.BO_DATA_AREA |  |
| COUNTY                         | County              | M1_RESRC.BO_DATA_AREA |  |
| POSTAL                         | Postal Code         | M1_RESRC.BO_DATA_AREA |  |
| STATE_DESCR                    | State Description   | CL_STATE_L.DESCR      |  |
| COUNTRY_DESCR                  | Country Description | CL_COUNTRY_L.DESCR    |  |
| CROSS_STREET                   | Cross Street        | M1_RESRC.BO_DATA_AREA |  |
| SUBURB                         | Suburb              | M1_RESRC.BO_DATA_AREA |  |
| STATE_CD                       | State Code          | M1_RESRC.BO_DATA_AREA |  |
| COUNTRY_CD                     | Country Code        | M1_RESRC.BO_DATA_AREA |  |
| GEO_CODE                       | Geographical Code   |                       |  |
| <b>User Defined Attributes</b> |                     |                       |  |
| UDF1_CD                        | City Code           | M1_RESRC.BO_DATA_AREA |  |
| UDF1_DESCR                     | City Description    | M1_RESRC.BO_DATA_AREA |  |
| UDF2_CD                        | County Code         | M1_RESRC.BO_DATA_AREA |  |
| UDF2_DESCR                     | County Description  | M1_RESRC.BO_DATA_AREA |  |

| Target Field | Description                       | Source Field          | Transformation Logic |
|--------------|-----------------------------------|-----------------------|----------------------|
| UDF3_CD      | Postal Code                       | M1_RESRC.BO_DATA_AREA |                      |
| UDF3_DESCR   | Postal Code Description           | M1_RESRC.BO_DATA_AREA |                      |
| UDF4_CD      | State Code                        | M1_RESRC.BO_DATA_AREA |                      |
| UDF4_DESCR   | State Description                 | CL_COUNTRY_L.DESCR    |                      |
| UDF5_CD      | Country Code                      | M1_POU.COUNTRY        |                      |
| UDF5_DESCR   | Country Description               | CL_COUNTRY_L.DESCR    |                      |
| UDF6_CD      | Geo Code Value                    |                       |                      |
| UDF6_DESCR   | Geo Code Description              |                       |                      |
| UDF7_CD      | Premise Char 1 Code               |                       |                      |
| UDF7_DESCR   | Premise Char 1 Description        |                       |                      |
| UDF8_CD      | Premise Char 2 Code               |                       |                      |
| UDF8_DESCR   | Premise Char 2 Description        |                       |                      |
| UDF9_CD      | Premise Char 3 Code               |                       |                      |
| UDF9_DESCR   | Premise Char 3 Description        |                       |                      |
| UDF10_CD     | Premise Char 4 Code               |                       |                      |
| UDF10_DESCR  | Premise Char 4 Description        |                       |                      |
| UDF11_CD     | User Defined Field 11 Code        |                       |                      |
| UDF11_DESCR  | User Defined Field 11 Description |                       |                      |
| UDF12_CD     | User Defined Field 12 Code        |                       |                      |
| UDF12_DESCR  | User Defined Field 12 Description |                       |                      |
| UDF13_CD     | User Defined Field 13 Code        |                       |                      |
| UDF13_DESCR  | User Defined Field 13 Description |                       |                      |
| UDF14_CD     | User Defined Field 14 Code        |                       |                      |
| UDF14_DESCR  | User Defined Field 14 Description |                       |                      |
| UDF15_CD     | User Defined Field 15 Code        |                       |                      |
| UDF15_DESCR  | User Defined Field 15 Description |                       |                      |
| UDF16_CD     | User Defined Field 16 Code        |                       |                      |

| Target Field | Description                          | Source Field | Transformation Logic |
|--------------|--------------------------------------|--------------|----------------------|
| UDF16_DESCR  | User Defined Field 16<br>Description |              |                      |
| UDF1_NUM     | User Defined Field 1<br>Number       |              |                      |
| UDF2_NUM     | User Defined Field 2<br>Number       |              |                      |
| UDF3_NUM     | User Defined Field 3<br>Number       |              |                      |
| UDF4_NUM     | User Defined Field 4<br>Number       |              |                      |
| UDF5_NUM     | User Defined Field 5<br>Number       |              |                      |
| UDF6_NUM     | User Defined Field 6<br>Number       |              |                      |
| UDF7_NUM     | User Defined Field 7<br>Number       |              |                      |
| UDF8_NUM     | User Defined Field 8<br>Number       |              |                      |
| UDF9_NUM     | User Defined Field 9<br>Number       |              |                      |
| UDF10_NUM    | User Defined Field 10<br>Number      |              |                      |
| UDF1_DATE    | User Defined Field 1 Date            |              |                      |
| UDF2_DATE    | User Defined Field 2 Date            |              |                      |
| UDF3_DATE    | User Defined Field 3 Date            |              |                      |
| UDF4_DATE    | User Defined Field 4 Date            |              |                      |
| UDF5_DATE    | User Defined Field 5 Date            |              |                      |
| UDF6_DATE    | User Defined Field 6 Date            |              |                      |
| UDF7_DATE    | User Defined Field 7 Date            |              |                      |
| UDF8_DATE    | User Defined Field 8 Date            |              |                      |
| UDF9_DATE    | User Defined Field 9 Date            |              |                      |
| UDF10_DATE   | User Defined Field 10 Date           |              |                      |
| FLEXFIELD1   | Flex Field 1                         |              |                      |
| FLEXFIELD2   | Flex Field 2                         |              |                      |
| FLEXFIELD3   | Flex Field 3                         |              |                      |
| FLEXFIELD4   | Flex Field 4                         |              |                      |
| FLEXFIELD5   | Flex Field 5                         |              |                      |



| Target Field                | Description               | Source Field           | Transformation Logic  |
|-----------------------------|---------------------------|------------------------|---|
| FLEXFIELD6                  | Flex Field 6              |                        |   |
| FLEXFIELD7                  | Flex Field 7              |                        |   |
| FLEXFIELD8                  | Flex Field 8              |                        |   |
| FLEXFIELD9                  | Flex Field 9              |                        |   |
| FLEXFIELD10                 | Flex Field 10             |                        |   |
| <b>Data Load Attributes</b> |                           |                        |   |
| EFF_END_DTTM                | Effective End Date/Time   |                        |   |
| EFF_START_DTTM              | Effective Start Date/Time |                        |   |
| DATA_LOAD_DTTM              | Data Load Date/Time       |                        | This field is populated with the load timestamp value.  |
| DATA_SOURCE_IND             | Data Source Indicator     | CI_INSTALLATION.ENV_ID | This field is populated with the DSI value on the source product instance configuration. The table is populated as part of the initial setup and the DSI value is extracted from the environment ID of the source system. |
| JOB_NBR                     | Job Number                |                        | This field is populated with the ODI job execution session number.  |

## Crew

The Crew dimension includes the details of all crews defined in the source system up to three levels of crew hierarchy.

This dimension is also populated by Oracle Utilities Network Management System.

## Properties

| Property                   | Value                                     |
|----------------------------|---|
| Target Table               | CD_CREW                                   |
| Table Type                 | Dimension                                 |
| SCD Type                   | Type 2                                    |
| Source System Driver Table | M1_RESRC<br>M1_RESRC_TYPE<br>M1_HIERARCHY |
| Stage Table                | STG_CD_CREW                               |
| ODI Package                | B1_PKG_CD_CREW                            |
| ETL View                   | B1_D_CREW_VW                              |

## Fields

| Target Field         | Description                  | Source Field             | Transformation Logic   |
|----------------------|------------------------------|--------------------------|--|
| <b>Surrogate Key</b> |                              |                          |  |
| CREW_KEY             | Crew Dimension Surrogate Key |                          | This field is populated from the SPL_CREW_SEQ sequence.  |
| <b>Natural Keys</b>  |                              |                          |  |
| SRC_CREW_ID          | Crew ID                      | M1_RESRC.RESRC_ID        |  |
| <b>Attributes</b>    |                              |                          |  |
| CREW_DESCR           | Crew Description             | M1_RESRC_ID.RESRC_ID_VAL |  |
| CREW_TYPE_DESCR      | Crew Type Description        | M1_RESRC_TYPE_L.DESCR    |  |
| CREW_CD              | Crew Code                    |                          | <b>Note:</b> This field is populated only for the Oracle Utilities Network Management System source product. |
| CREW_TYPE_CD         | Crew Type Code               | M1_RESRC.RESRC_TYPE_CD   |  |

| Target Field    | Description                     | Source Field                           | Transformation Logic   |
|-----------------|---------------------------------|--|--|
| ORG_UNIT1_CD    | Crew Hierarchy-1 Code           | M1_HIER_UPSTREAM.M<br>1_PARENT_HIER_CD | <p>This field is populated from the Hierarchy Upstream table based on the hierarchy and hierarchy level.</p> <p><b>Note:</b> The hierarchy is based on the reporting hierarchy stored on the crew's characteristic (where characteristic type is Crew Hierarchy 'M1CRHIER') and for which the hierarchy level is Level 1 ('M101').</p> |
| ORG_UNIT2_CD    | Crew Hierarchy-2 Code           | M1_HIER_UPSTREAM.M<br>1_PARENT_HIER_CD | <p>This field is populated from the Hierarchy Upstream table based on the hierarchy and hierarchy level.</p> <p><b>Note:</b> The hierarchy is based on the reporting hierarchy stored on the crew's characteristic (where characteristic type is Crew Hierarchy 'M1CRHIER') and for which the hierarchy level is Level 1 ('M102').</p> |
| ORG_UNIT3_CD    | Crew Hierarchy-3 Code           | M1_HIER_UPSTREAM.M<br>1_PARENT_HIER_CD | <p>This field is populated from the Hierarchy Upstream table based on the hierarchy and hierarchy level.</p> <p><b>Note:</b> The hierarchy is based on the reporting hierarchy stored on the crew's characteristic (where characteristic type is Crew Hierarchy 'M1CRHIER') and for which the hierarchy level is Level 1 ('M103').</p> |
| ORG_UNIT1_DESCR | Crew Hierarchy-1<br>Description | M1_HIERARCHY_L.DES<br>CR               | <p>This field is populated from the hierarchy description based on the parent hierarchy code and language configured.</p> <p><b>Note:</b> To retrieve the parent hierarchy code, see the transformation logic of the ORG_UNIT1_CD column.</p>  |

| Target Field    | Description                     | Source Field             | Transformation Logic   |
|-----------------|---------------------------------|--------------------------|--|
| ORG_UNIT2_DESCR | Crew Hierarchy-2<br>Description | M1_HIERARCHY_L.DES<br>CR | This field is populated from the hierarchy description based on the parent hierarchy code and language configured.<br><br><b>Note:</b> To retrieve the parent hierarchy code, see the transformation logic of the ORG_UNIT2_CD column. |
| ORG_UNIT3_DESCR | Crew Hierarchy-3<br>Description | M1_HIERARCHY_L.DES<br>CR | This field is populated from the hierarchy description based on the parent hierarchy code and language configured.<br><br><b>Note:</b> To retrieve the parent hierarchy code, see the transformation logic of the ORG_UNIT3_CD column. |

#### User Defined Attributes

|            |                                     |
|------------|-------------------------------------|
| UDF1_CD    | User Defined Field 1 Code           |
| UDF1_DESCR | User Defined Field 1<br>Description |
| UDF2_CD    | User Defined Field 2 Code           |
| UDF2_DESCR | User Defined Field 2<br>Description |
| UDF3_CD    | User Defined Field 3 Code           |
| UDF3_DESCR | User Defined Field 3<br>Description |
| UDF4_CD    | User Defined Field 4 Code           |
| UDF4_DESCR | User Defined Field 4<br>Description |
| UDF5_CD    | User Defined Field 5 Code           |
| UDF5_DESCR | User Defined Field 5<br>Description |
| UDF6_CD    | User Defined Field 6 Code           |
| UDF6_DESCR | User Defined Field 6<br>Description |
| UDF7_CD    | User Defined Field 7Code            |
| UDF7_DESCR | User Defined Field 7<br>Description |
| UDF8_CD    | User Defined Field 8 Code           |

| Target Field                | Description                       | Source Field           | Transformation Logic  |
|-----------------------------|-----------------------------------|------------------------|---|
| UDF8_DESCR                  | User Defined Field 8 Description  |                        |   |
| UDF9_CD                     | User Defined Field 9 Code         |                        |   |
| UDF9_DESCR                  | User Defined Field 9 Description  |                        |   |
| UDF10_CD                    | User Defined Field 10 Code        |                        |   |
| UDF10_DESCR                 | User Defined Field 10 Description |                        |   |
| <b>Data Load Attributes</b> |                                   |                        |   |
| EFF_END_DTTM                | Effective End Date/Time           |                        |   |
| EFF_START_DTTM              | Effective Start Date/Time         |                        |   |
| DATA_LOAD_DTTM              | Data Load Date/Time               |                        | This field is populated with the load timestamp value.  |
| DATA_SOURCE_IND             | Data Source Indicator             | CI_INSTALLATION.ENV_ID | This field is populated with the DSI value on the source product instance configuration. The table is populated as part of the initial setup and the DSI value is extracted from the environment ID of the source system. |
| JOB_NBR                     | Job Number                        |                        | This field is populated with the ODI job execution session number.  |

## Contact

Though Contact dimension is referenced in the Oracle Utilities Mobile Workforce Management facts, it is populated only by the Oracle Utilities Meter Data Management source product. The ETL processes of the Oracle Utilities Mobile Workforce Management facts map this dimension based on the integration between Oracle Utilities Mobile Workforce Management and Oracle Utilities Meter Data Management.

Since this dimension is not populated by Oracle Utilities Mobile Workforce Management, the source mapping details are not provided in the document. See the *Oracle Utilities Extractors and Schema for Oracle Utilities Meter Data Management Data Mapping Guide* for the mapping details.

## Device

Though Device dimension is referenced in the Oracle Utilities Mobile Workforce Management facts, it is populated only by the Oracle Utilities Meter Data Management source product. The ETL processes of the Oracle Utilities Mobile Workforce

---

Management facts map this dimension based on the integration between Oracle Utilities Mobile Workforce Management and Oracle Utilities Meter Data Management.

Since this dimension is not populated by Oracle Utilities Mobile Workforce Management, the source mapping details are not provided in the document. See the *Oracle Utilities Extractors and Schema for Oracle Utilities Meter Data Management Data Mapping Guide* for the mapping details.

## Person

Though Person dimension is referenced in the Oracle Utilities Meter Data Management facts, it is populated only by the Oracle Utilities Customer Care and Billing source product. The ETL processes of the Oracle Utilities Meter Data Management facts map this dimension based on the integration between Oracle Utilities Meter Data Management and Oracle Utilities Customer Care and Billing.

Since this dimension is not populated by Oracle Utilities Meter Data Management, the source mapping details are not provided in the document. See the *Oracle Utilities Extractors and Schema for Oracle Utilities Customer Care and Billing Data Mapping Guide* for the mapping details.

## Premise

Though Premise dimension is referenced in the Oracle Utilities Meter Data Management facts, it is populated only by the Oracle Utilities Customer Care and Billing source product. The ETL processes of the Oracle Utilities Meter Data Management facts map this dimension based on the integration between Oracle Utilities Meter Data Management and Oracle Utilities Customer Care and Billing.

Since this dimension is not populated by Oracle Utilities Meter Data Management, the source mapping details are not provided in the document. See the *Oracle Utilities Extractors and Schema for Oracle Utilities Customer Care and Billing Data Mapping Guide* for the mapping details.

## Service Agreement

Though Service Agreement dimension is referenced in the Oracle Utilities Meter Data Management facts, it is populated only by the Oracle Utilities Customer Care and Billing source product. The ETL processes of the Oracle Utilities Meter Data Management facts map this dimension based on the integration between Oracle Utilities Meter Data Management and Oracle Utilities Customer Care and Billing.

Since this dimension is not populated by Oracle Utilities Meter Data Management, the source mapping details are not provided in the document. See the *Oracle Utilities Extractors and Schema for Oracle Utilities Customer Care and Billing Data Mapping Guide* for the mapping details.

## Service Point

Though Service Point dimension is referenced in the Oracle Utilities Mobile Workforce Management facts, it is populated only by the Oracle Utilities Meter Data Management source product. The ETL processes of the Oracle Utilities Mobile Workforce

Management facts map this dimension based on the integration between Oracle Utilities Mobile Workforce Management and Oracle Utilities Meter Data Management.

Since this dimension is not populated by Oracle Utilities Mobile Workforce Management, the source mapping details are not provided in the document. See the *Oracle Utilities Extractors and Schema for Oracle Utilities Meter Data Management Data Mapping Guide* for the mapping details.

## Usage Subscription

Though Usage Subscription dimension is referenced in the Oracle Utilities Mobile Workforce Management facts, it is populated only by the Oracle Utilities Meter Data Management source product. The ETL processes of the Oracle Utilities Mobile Workforce Management facts map this dimension based on the integration between Oracle Utilities Mobile Workforce Management and Oracle Utilities Meter Data Management.

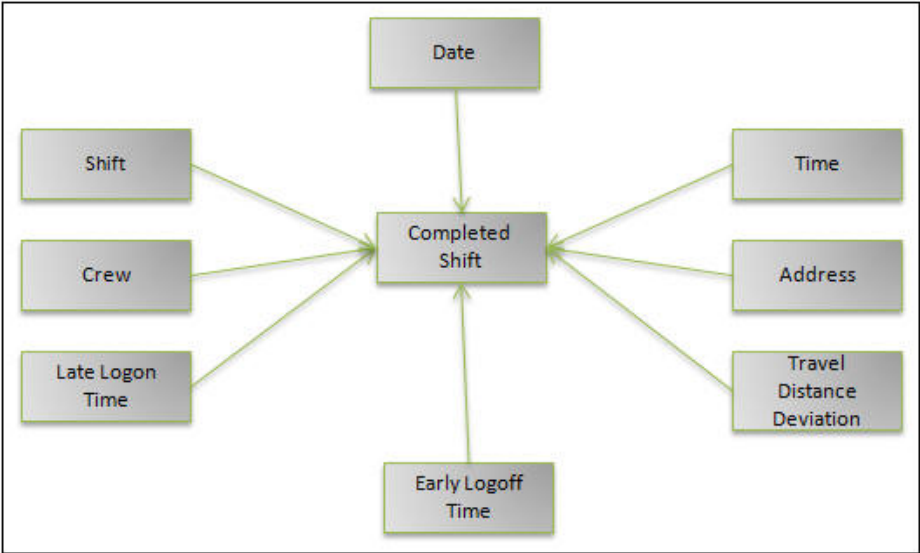
Since this dimension is not populated by Oracle Utilities Mobile Workforce Management, the source mapping details are not provided in the document. See the *Oracle Utilities Extractors and Schema for Oracle Utilities Meter Data Management Data Mapping Guide* for the mapping details.

# Facts

## Completed Shift

The Completed Shift fact holds the details of all completed shifts from the Oracle Utilities Mobile Workforce Management system that show the number of crews late to logon and by how much they deviated from the planned time, the number of crews early to logoff and by how much they deviated from the planned time, how much time the crew work overtime, and what are the deviations in estimated travel mileage versus actual mileage. This fact is populated based on completed, real shifts.

### Entity Relationship Diagram





## Properties

| Property                   | Value   |
|----------------------------|---|
| Target Table Name          | CF_CMP_SHIFT  |
| Table Type                 | Fact  |
| Fact Type                  | Accumulation  |
| Source System Driver Table | M1_CREW_SHIFT<br>M1_RESRC<br>M1_TASK<br>M1_LOCATION |
| Stage Table Name           | STG_CF_CMP_SHIFT                                    |
| ODI Package Name           | B1_PKG_CF_CMP_SHIFT                                 |
| ETL View Name              | B1_F_CMP_SHIFT_VW                                   |
| Materialized View Name     | B1_CMP_SHIFT_MON_MV1                                |

## Fields

| Target Field         | Description                   | Source Field  | Transformation Logic  |
|----------------------|-------------------------------|---|---|
| <b>Surrogate Key</b> |                               |   |   |
| CMP_SHIFT_KEY        | Completed Shift Surrogate Key |   | This field is populated from the OUBI_CMP_SHIFT_SEQ sequence.   |
| <b>Natural Keys</b>  |                               |   |   |
| SRC_SHIFT_ID         | Shift ID                      | M1_CREW_SHIFT.CREW_SHIFT_ID                                   |   |
| <b>Measures</b>      |                               |   |   |
| PLANNED_DUR          | Planned Duration (Seconds)    | M1_CREW_SHIFT.(PLAN_START_DTTM - M1_CREW_SHIFT.PLAN_END_DTTM) | This field is populated with the planned duration of the shift. It is the difference between the planned start date time and end date time (in seconds).  |
| ACTUAL_DUR           | Actual Duration (Seconds)     | M1_CREW_SHIFT.BUS_STATUS_DTTM - M1_CREW_SHIFT.LOG.LOG_DTTM    | This field is populated with the actual duration of the shift. It is populated with the difference (in seconds) between the actual start date time and actual completion date time.<br><br>Depending on the crew shift, the regular logs or the mobile logs are used. |

| Target Field                 | Description                          | Source Field  | Transformation Logic  |
|------------------------------|--------------------------------------|---|---|
| OVERTIME_DUR                 | Overtime Duration (Seconds)          | M1_CREW_SHFT.ACTUAL_DUR<br><br>M1_CREW_SHFT.PLANNED_DUR | This field is populated if the shift went overtime. It is calculated from the difference between the actual duration and planned duration (in seconds).<br><br>If the difference is greater than 0, overtime duration is populated.   |
| EST_DISTANCE                 | Estimated Distance                   | M1_TASK.BO_DATA_AREA                                    | This field is the total of all estimated mileage of all tasks performed by the crew on the shift.   |
| EST_TOT_MILEAGE              | Estimated Total Mileage for Vehicles | M1_TASK.RESRC_ID<br><br>M1_RESRC.BO_DATA_AREA           | This field is the total of estimated mileage of all tasks performed by the crew taking into consideration the resources allocated to the shift. It is populated with the sum of estimated travel distance for all tasks of the shift multiplied by the number of vehicles allocated to the shift. |
| ACT_TOT_MILEAGE              | Actual Total Mileage for Vehicles    | M1_CREW_SHFT_RESRC.BO_DATA_AREA                         | This field is populated by the actual total mileage of all vehicles allocated to the shift. It is populated based on the odometer readings at the start and end of the shift.   |
| VEHICLE_CNT                  | Number of Vehicles                   | M1_RESRC.RESRC_ID                                       | This field is populated with the total number of vehicles allocated to the shift. It is retrieved from resources where resource class is Vehicle ('M1VH').  |
| FACT_CNT                     | Count                                |   | This field is populated with the standard value of '1'.   |
| <b>Degenerate Dimensions</b> |                                      |   |   |
| SHIFT_PLANNED_START_DTTM     | Shift Planned Start Date/Time        | M1_CREW_SHFT.PLAN_START_DTTM                            | This field is populated with the plan start date time associated with the crew shift.   |
| <b>Foreign Keys</b>          |                                      |   |   |
| CREW_SHIFT_KEY               | Shift Dimension Surrogate Key        | M1_CREW_SHFT.CREW_SHIFT_ID                              | This field is populated from the Crew Shift dimension based on the crew shift ID associated with the crew.  |

| Target Field        | Description                                       | Source Field  | Transformation Logic   |
|---------------------|---|---|--|
| CREW_KEY            | Crew Dimension Surrogate Key                      | M1_CREW_SHFT.RESRC_ID                                       | This field is populated from the Crew dimension based on the resource ID associated with the crew shift.   |
| LATE_LOGON_TM_KEY   | Late Logon Time Dimension Surrogate Key           | M1_CREW_SHFT_LOG.LOG_DT_TM - M1_CREW_SHFT.PLAN_START_DT_TM  | <p>This field is populated based on the late logon time calculated as the difference (in minutes) between the shift's actual start date/time and planned start date/time.</p> <p>Depending on the crew shift, the regular logs or the mobile logs would be used.</p> |
| EARLY_LOGOFF_TM_KEY | Early Logoff Time Dimension Surrogate Key         | M1_CREW_SHFT.PLAN_END_DT_TM - M1_CREW_SHFT.BUS_STATUS_DT_TM | This field is populated based on the early logoff time calculated as the difference (in minutes) between the shift's actual end date/ time and planned end date/ time.   |
| TRAVEL_DIST_DEV_KEY | Travel Distance Deviation Dimension Surrogate Key |   | This field is calculated based on the percentage of deviation between actual total mileage and estimated total mileage calculated earlier in the fact.   |

| Target Field                              | Description                              | Source Field                        | Transformation Logic  |
|---|--|-------------------------------------|---|
| LOGON_ADDR_KEY                            | Logon Address Dimension<br>Surrogate Key | M1_LOCATION/<br>M1_RESRC.ADDRESS1   | This field is populated based on the logon location entered on the shift.   |
|   |  | M1_LOCATION/<br>M1_RESRC.ADDRESS2   | If there is no logon location specified, but the logon location type is Home, the field is populated based on the home address of the first mobile worker allocated to the shift. |
|   |  | M1_LOCATION/<br>M1_RESRC.ADDRESS3   |   |
|   |  | M1_LOCATION/<br>M1_RESRC.ADDRESS4   |   |
|   |  | M1_LOCATION/<br>M1_RESRC.CROSS_STRT |   |
|   |  | M1_LOCATION/<br>M1_RESRC.SUBURB     |   |
|   |  | M1_LOCATION/<br>M1_RESRC.CITY       |   |
|   |  | M1_LOCATION/<br>M1_RESRC.COUNTY     |   |
|   |  | M1_LOCATION/<br>M1_RESRC.STATE      |   |
|   |  | M1_LOCATION/<br>M1_RESRC.POSTAL     |   |
| M1_LOCATION/<br>M1_RESRC.COUNTRY          |  |                                     |   |
| M1_LOCATION/<br>M1_RESRC.BO_DATA_A<br>REA |  |                                     |   |

| Target Field                     | Description                                     | Source Field                              | Transformation Logic  |
|----------------------------------|---|---|---|
| LOGOFF_ADDR_KEY                  | Logoff Address Dimension<br>Surrogate Key       | M1_LOCATION/<br>M1_RESRC.ADDRESS1         | This field is populated based<br>on the logoff location entered<br>on the shift.  |
|                                  |   | M1_LOCATION/<br>M1_RESRC.ADDRESS2         | If there is no logoff location<br>specified, but the logoff<br>location type is Home, the field<br>is populated based on the<br>home address of the first<br>mobile worker allocated to the<br>shift. |
|                                  |   | M1_LOCATION/<br>M1_RESRC.ADDRESS3         |   |
|                                  |   | M1_LOCATION/<br>M1_RESRC.ADDRESS4         |   |
|                                  |   | M1_LOCATION/<br>M1_RESRC.CROSS_STRT       |   |
|                                  |   | M1_LOCATION/<br>M1_RESRC.SUBURB           |   |
|                                  |   | M1_LOCATION/<br>M1_RESRC.CITY             |   |
|                                  |   | M1_LOCATION/<br>M1_RESRC.COUNTY           |   |
|                                  |   | M1_LOCATION/<br>M1_RESRC.STATE            |   |
|                                  |   | M1_LOCATION/<br>M1_RESRC.POSTAL           |   |
|                                  |   | M1_LOCATION/<br>M1_RESRC.COUNTRY          |   |
|                                  |   | M1_LOCATION/<br>M1_RESRC.BO_DATA_A<br>REA |   |
| SHIFT_PLANNED_<br>START_DATE_KEY | Shift Planned Start Date<br>Key                 | M1_CREW_SHFT.PLAN_<br>START_DTTM          | This field is populated from<br>the Crew Shift table based on<br>the planned start date<br>associated with the crew shift.  |
| SHIFT_PLANNED_<br>START_TIME_KEY | Shift Planned Start Time<br>Key                 | M1_CREW_SHFT.PLAN_<br>START_DTTM          | This field is populated from<br>the Crew Shift table based on<br>the planned start time<br>associated with the crew shift.  |
| CMP_SHIFT_UDD1_KEY               | Completed Shift User<br>Defined Dimension 1 Key |   |   |
| CMP_SHIFT_UDD2_KEY               | Completed Shift User<br>Defined Dimension 2 Key |   |   |
| <b>User Defined Attributes</b>   |   |   |   |
| UDM1                             | User Defined Measure 1                          |   |   |

| Target Field | Description                              | Source Field | Transformation Logic |
|--------------|--|--------------|----------------------|
| UDM2         | User Defined Measure 2                   |              |                      |
| UDM3         | User Defined Measure 3                   |              |                      |
| UDM4         | User Defined Measure 4                   |              |                      |
| UDM5         | User Defined Measure 5                   |              |                      |
| UDM6         | User Defined Measure 6                   |              |                      |
| UDM7         | User Defined Measure 7                   |              |                      |
| UDM8         | User Defined Measure 8                   |              |                      |
| UDM9         | User Defined Measure 9                   |              |                      |
| UDM10        | User Defined Measure 10                  |              |                      |
| UDDGEN1      | User Defined Degenerate Dimension 1      |              |                      |
| UDDGEN2      | User Defined Degenerate Dimension 2      |              |                      |
| UDDGEN3      | User Defined Degenerate Dimension 3      |              |                      |
| UDDGEN4      | User Defined Degenerate Dimension 4      |              |                      |
| UDDGEN5      | User Defined Degenerate Dimension 5      |              |                      |
| UDDGENL1     | User Defined Long Degenerate Dimension 1 |              |                      |
| UDDGENL2     | User Defined Long Degenerate Dimension 2 |              |                      |
| UDDGENL3     | User Defined Long Degenerate Dimension 3 |              |                      |
| UDDGENL4     | User Defined Long Degenerate Dimension 4 |              |                      |
| UDDGENL5     | User Defined Long Degenerate Dimension 5 |              |                      |
| UDDFK1_KEY   | User Defined Dimension Foreign Key 1     |              |                      |
| UDDFK2_KEY   | User Defined Dimension Foreign Key 2     |              |                      |
| UDDFK3_KEY   | User Defined Dimension Foreign Key 3     |              |                      |
| UDDFK4_KEY   | User Defined Dimension Foreign Key 4     |              |                      |
| UDDFK5_KEY   | User Defined Dimension Foreign Key 5     |              |                      |

---

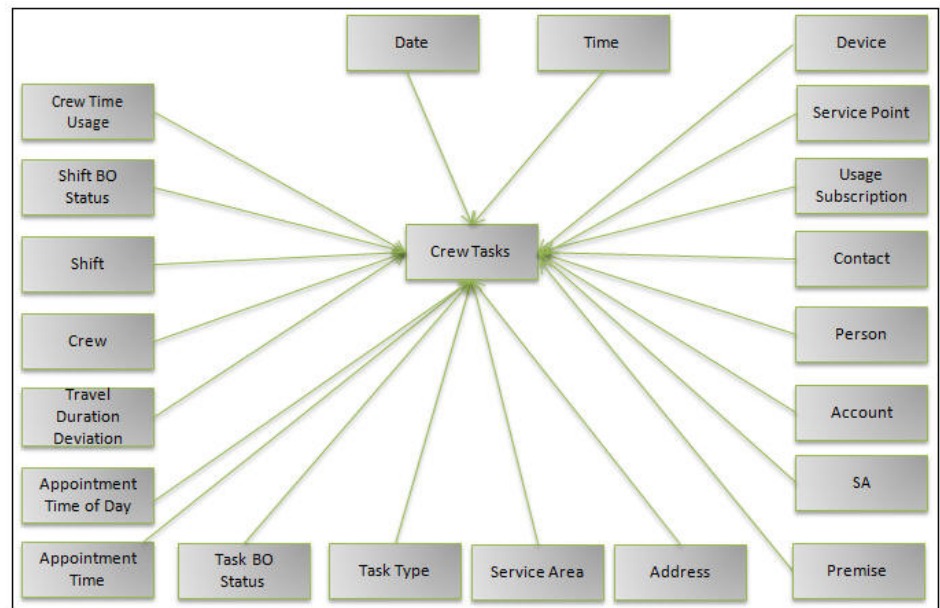
| Target Field                | Description           | Source Field           | Transformation Logic   |
|-----------------------------|-----------------------|------------------------|--|
| <b>Data Load Attributes</b> |                       |                        |  |
| DATA_SOURCE_IND             | Data Source Indicator | CL_INSTALLATION.ENV_ID | This field is populated with the DSI value on the source product instance configuration. This table is populated as part of the initial setup and the DSI value is extracted from the environment ID of the source system. |
| JOB_NBR                     | Job Number            |                        | This field is populated with the ODI job execution session number.   |

---

## Crew Task

The Crew Tasks fact has measures that show how much time the crews spend on productive versus non-productive tasks; how much time crews spend working on each task, as well as time spent in and out of services; how many times a crew makes or misses appointments, and if missed, by how much; and how many times crews arrive at an activity, but fail to complete it.

### Entity Relationship Diagram





## Properties

| Property                   | Value  |
|----------------------------|--|
| Target Table Name          | CF_CREW_TASK                                     |
| Table Type                 | Fact   |
| Fact Type                  | Accumulation                                     |
| Source System Driver Table | M1_CREW_SHFT<br>M1_TASK<br>M1_LOCATION<br>M1_POU |
| Stage Table Name           | STG_CF_CREW_TASK                                 |
| ODI Package Name           | B1_PKG_CF_CREW_TASK                              |
| ETL View Name              | B1_F_CREW_TASK_VW                                |
| Materialized View Name     | B1_CREW_TASKS_MON_MV1                            |

## Fields

| Target Field         | Description             | Source Field               | Transformation Logic  |
|----------------------|-------------------------|----------------------------|---|
| <b>Surrogate Key</b> |                         |                            |   |
| CREW_TASK_KEY        | Crew Task Surrogate Key |                            | This field is populated from the OUBI_CREW_TASK_SEQ sequence.   |
| <b>Natural Keys</b>  |                         |                            |   |
| SRC_SHIFT_ID         | Shift ID                | M1_CREW_SHFT.CREW_SHIFT_ID |   |
| SRC_TASK_ID          | Activity ID             | M1_TASK.TASK_ID            |   |
| SRC_SHIFT_LOG_SEQ    | Shift Log Sequence      | M1_CREW_SHFT_LOG.SEQNO     | Depending on the crew shift, the regular logs or mobile logs are used.                                      |
| SRC_TASK_LOG_SEQ     | Task Log Sequence       | M1_TASK_LOG.SEQNO          | Depending on the crew shift, the regular logs or mobile logs are used.                                      |
| <b>Measures</b>      |                         |                            |   |
| PREV_STATE_DUR       | Time in Previous State  |                            | This field is populated with the time spent (in seconds) in the previous state based on the log date/times. |
| EST_TRAVEL_DUR       | Estimated               | M1_TASK.BO_DATA_AR<br>EA   | This field is populated with the estimated travel duration from CLOB in the source Task table.              |

| Target Field                 | Description                                     | Source Field   | Transformation Logic  |
|------------------------------|---|--|---|
| FACT_CNT                     | Count   |  | This field is populated with the standard value of '1'.   |
| <b>Degenerate Dimensions</b> |   |  |   |
| APPOINTMENT_IND              | Appointment Indicator                           | M1_TASK.APPOINTMENT_FLG  | This field is populated based on the appointment flag from the Task table. If the appointment flag is 'Y', the appointment indicator is populated with '1'. Else, with '0'. |
| EMERGENCY_IND                | Emergency Indicator                             | M1_TASK.QUEUE_FLG  | This field is populated based on the queue flag from the source Task table. If the queue flag is 'M1ER', the emergency indicator is populated with '1'. Else, with '0'.     |
| FROM_DTTM                    | From Date/Time                                  | M1_CREW_SHFT_LOG.LOG_DTTM<br><br>M1_TASK_LOG.LOG_DTTM  |   |
| TO_DTTM                      | To Date/Time                                    | M1_CREW_SHFT_LOG.LOG_DTTM<br><br>M1_TASK_LOG.LOG_DTTM  |   |
| <b>Foreign Keys</b>          |   |  |   |
| CREW_TM_USG_KEY              | Crew Time Usage<br>Dimension Surrogate Key      |  | This field is populated based on the task class and crew shift status or task status.   |
| FROM_SHIFT_BO_STATUS_KEY     | From Shift BO Status<br>Dimension Surrogate Key | M1_CREW_SHFT.BUS_OBJ_CD<br><br>M1_CREW_SHFT_LOG.BO_STATUS_CD<br><br>M1_CREW_SHFT_LOG.BO_STATUS_REASON_CD | This field is populated based on shift status from the log entries.   |

| Target Field            | Description  | Source Field   | Transformation Logic  |
|-------------------------|--|--|---|
| TO_SHIFT_BO_STATUS_KEY  | To Shift BO Status<br>Dimension Surrogate Key        | M1_CREW_SHFT.BUS_O<br>BJ_CD<br><br>M1_CREW_SHFT_LOG.B<br>O_STATUS_CD<br><br>M1_CREW_SHFT_LOG.B<br>O_STATUS_REASON_C<br>D | This field is populated based on shift status from the log entries.   |
| CREW_SHIFT_KEY          | Shift Dimension Surrogate Key                        | M1_CREW_SHFT.CREW_<br>SHFT_ID  | This field is populated from the Crew Shift dimension based on the crew shift ID.   |
| CREW_KEY                | Crew Dimension Surrogate Key                         | M1_CREW_SHFT.RESRC<br>_ID  | This field is populated from the Crew dimension based on the resource ID associated with the crew shift.  |
| TRAVEL_DUR_DEV_KEY      | Travel Duration Deviation<br>Dimension Surrogate Key |  | This field is calculated based on the percentage of deviation between actual travel duration based on the log date/times and the estimated travel duration. |
| APPT_TM_KEY             | Appointment Time<br>Dimension Surrogate Key          |  | This field is populated based on the difference between task time window start and end date/time associated with the task ID.                               |
| APPT_TM_OF_DAY_KEY      | Appointment Time of Day<br>Dimension Surrogate Key   |  | This field is populated based on the task time window start date/time associated with the task ID.  |
| FROM_TASK_BO_STATUS_KEY | From Task BO Status<br>Dimension Surrogate Key       | M1_TASK.BUS_OBJ_CD<br><br>M1_TASK_LOG.BO_STA<br>TUS_CD<br><br>M1_TASK_LOG.BO_STA<br>TUS_REASON_CD                        | This field is populated based on the task status from log entries.  |
| TO_TASK_BO_STATUS_KEY   | To Task BO Status<br>Dimension Surrogate Key         | M1_TASK.BUS_OBJ_CD<br><br>M1_TASK_LOG.BO_STA<br>TUS_CD<br><br>M1_TASK_LOG.BO_STA<br>TUS_REASON_CD                        | This field is populated based on the task status from log entries.  |
| TASK_TYPE_KEY           | Task Type Dimension<br>Surrogate Key                 | M1_TASK.TASK_TYPE_<br>CD   | This field is populated based on the task type code associated with the task ID.  |

| Target Field     | Description                                   | Source Field  | Transformation Logic  |
|------------------|---|---|---|
| SERVICE_AREA_KEY | Service Area Dimension<br>Surrogate Key       | M1_TASK.SVC_AREA_C<br>D                                       | This field is populated based on the task type code associated with the task ID.  |
| ADDR_KEY         | Address Dimension<br>Surrogate Key            |   | This field is populated based on the address constituents associated with the task.<br><br>Based on the task class, the address constituents are fetched either from the task, location, depot, or period of unavailability entity. |
| FROM_DATE_KEY    | From Date Dimension<br>Surrogate Key          | M1_CREW_SHFT_LOG.L<br>OG_DTTM<br><br>M1_TASK_LOG.LOG_D<br>TTM | This field is populated based on the log date from shift log or task log.   |
| TO_DATE_KEY      | To Date Dimension<br>Surrogate Key            | M1_CREW_SHFT_LOG.L<br>OG_DTTM<br><br>M1_TASK_LOG.LOG_D<br>TTM | This field is populated based on the log date from shift log or task log.   |
| FROM_TIME_KEY    | From Time Dimension<br>Surrogate Key          | M1_CREW_SHFT_LOG.L<br>OG_DTTM<br><br>M1_TASK_LOG.LOG_D<br>TTM | This field is populated based on the log date from shift log or task log.   |
| TO_TIME_KEY      | To Time Dimension<br>Surrogate Key            | M1_CREW_SHFT_LOG.L<br>OG_DTTM<br><br>M1_TASK_LOG.LOG_D<br>TTM | This field is populated based on the log date from shift log or task log.   |
| MTR_DEVICE_KEY   | Device Dimension<br>Surrogate Key             | M1_TASK.BO_DATA_AR<br>EA                                      | This field is populated based on the external identifier value for the meter device stored on the task as part of MWM-MDM integration.  |
| SP_KEY           | Service Point Dimension<br>Surrogate Key      | M1_TASK.BO_DATA_AR<br>EA                                      | This field is populated based on the service point ID stored on the task as part of MWM-MDM integration.  |
| US_KEY           | Usage Subscription<br>Dimension Surrogate Key | M1_TASK.BO_DATA_AR<br>EA                                      | This field is populated based on the usage subscription ID stored on the task as part of MWM-MDM integration.   |

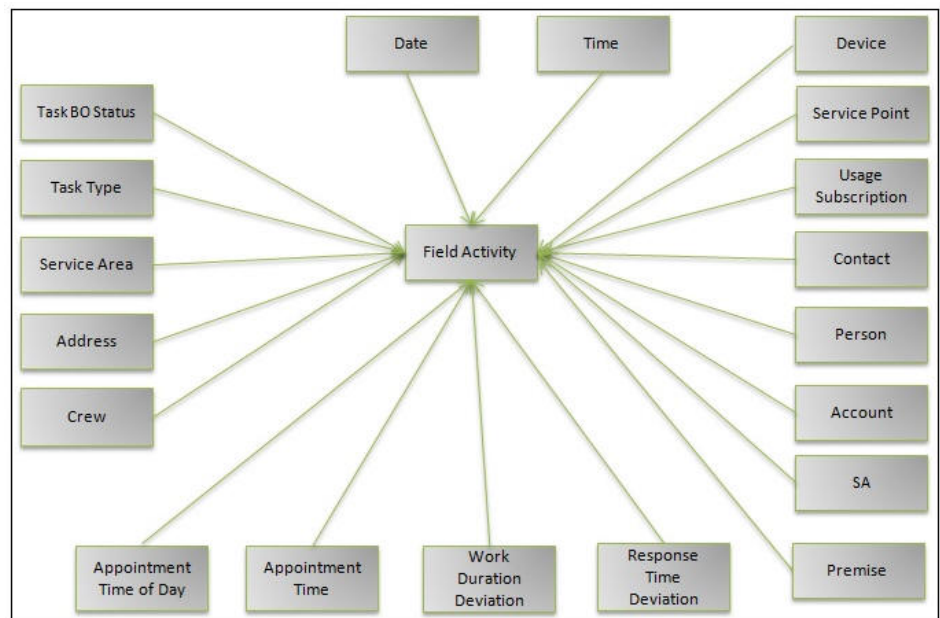
| Target Field                   | Description                                  | Source Field             | Transformation Logic   |
|--------------------------------|--|--------------------------|--|
| CONTACT_KEY                    | Contact Dimension<br>Surrogate Key           | M1_TASK.BO_DATA_AR<br>EA | This field is populated based on the contact ID stored on the task as part of MWM-MDM integration.       |
| PER_KEY                        | Person Dimension<br>Surrogate Key            | M1_TASK.BO_DATA_AR<br>EA | This field is populated based on the person ID stored on task as part of MWM-CCB integration.            |
| ACCT_KEY                       | Account Dimension<br>Surrogate Key           | M1_TASK.BO_DATA_AR<br>EA | This field is populated based on the account ID stored on task as part of MWM-CCB integration.           |
| SA_KEY                         | Service Agreement<br>Dimension Surrogate Key | M1_TASK.BO_DATA_AR<br>EA | This field is populated based on the service agreement ID stored on task as part of MWM-CCB integration. |
| PREM_KEY                       | Premise Dimension<br>Surrogate Key           | M1_TASK.BO_DATA_AR<br>EA | This field is populated based on the premise ID stored on task as part of MWM-CCB integration.           |
| CREW_TASK_UDD1_KEY             | Crew Task User Defined<br>Dimension 1 Key    |                          |  |
| CREW_TASK_UDD2_KEY             | Crew Task User Defined<br>Dimension 2 Key    |                          |  |
| <b>User Defined Attributes</b> |  |                          |  |
| UDM1                           | User Defined Measure 1                       |                          |  |
| UDM2                           | User Defined Measure 2                       |                          |  |
| UDM3                           | User Defined Measure 3                       |                          |  |
| UDM4                           | User Defined Measure 4                       |                          |  |
| UDM5                           | User Defined Measure 5                       |                          |  |
| UDM6                           | User Defined Measure 6                       |                          |  |
| UDM7                           | User Defined Measure 7                       |                          |  |
| UDM8                           | User Defined Measure 8                       |                          |  |
| UDM9                           | User Defined Measure 9                       |                          |  |
| UDM10                          | User Defined Measure 10                      |                          |  |
| UDDGEN1                        | User Defined Degenerate<br>Dimension 1       |                          |  |
| UDDGEN2                        | User Defined Degenerate<br>Dimension 2       |                          |  |

| Target Field                | Description                              | Source Field           | Transformation Logic   |
|-----------------------------|--|------------------------|--|
| UDDGEN3                     | User Defined Degenerate Dimension 3      |                        |  |
| UDDGEN4                     | User Defined Degenerate Dimension 4      |                        |  |
| UDDGEN5                     | User Defined Degenerate Dimension 5      |                        |  |
| UDDGENL1                    | User Defined Long Degenerate Dimension 1 |                        |  |
| UDDGENL2                    | User Defined Long Degenerate Dimension 2 |                        |  |
| UDDGENL3                    | User Defined Long Degenerate Dimension 3 |                        |  |
| UDDGENL4                    | User Defined Long Degenerate Dimension 4 |                        |  |
| UDDGENL5                    | User Defined Long Degenerate Dimension 5 |                        |  |
| UDDFK1_KEY                  | User Defined Dimension Foreign Key 1     |                        |  |
| UDDFK2_KEY                  | User Defined Dimension Foreign Key 2     |                        |  |
| UDDFK3_KEY                  | User Defined Dimension Foreign Key 3     |                        |  |
| UDDFK4_KEY                  | User Defined Dimension Foreign Key 4     |                        |  |
| UDDFK5_KEY                  | User Defined Dimension Foreign Key 5     |                        |  |
| <b>Data Load Attributes</b> |  |                        |  |
| DATA_SOURCE_IND             | Data Source Indicator                    | CI_INSTALLATION.ENV_ID | This field is populated with the DSI value on the source product instance configuration. This table is populated as part of the initial setup and the DSI value is extracted from the environment ID of the source system. |
| JOB_NBR                     | Job Number                               |                        | This field is populated with the ODI job execution session number.   |

## Field Activity

The Field Activity fact holds the details of all activities (tasks) defined in the Oracle Utilities Extractors and Schema for Oracle Utilities Mobile Workforce Management system with measures around duration quantities, response times, and emergency indicator.

### Entity Relationship Diagram



## Properties

| Property                   | Value   |
|----------------------------|---|
| Target Table Name          | CF_FLD_ACTIVITY   |
| Table Type                 | Fact  |
| Fact Type                  | Accumulation  |
| Source System Driver Table | M1_TASK<br>M1_CREW_SHFT   |
| Stage Table Name           | STG_CF_FLD_ACTIVITY   |
| ODI Package Name           | B1_PKG_CF_FLD_ACTIVITY  |
| ETL View Name              | B1_F_FLD_ACTIVITY_VW  |
| Materialized View Name     | B1_FLD_ACTIVITY_MON_MV1<br>B1_FLD_ACTIVITY_MON_MV2<br>B1_FLD_ACTIVITY_MON_MV3 |

## Fields

| Target Field         | Description             | Source Field               | Transformation Logic  |
|----------------------|-------------------------|----------------------------|---|
| <b>Surrogate Key</b> |                         |                            |   |
| FLD_ACTIVITY_KEY     | Activity Surrogate Key  |                            | This field is populated from the OUBI_FLD_ACTIVITY_SEQ sequence.  |
| <b>Natural Keys</b>  |                         |                            |   |
| SRC_TASK_ID          | Activity ID             | M1_TASK.TASK_ID            | This field is populated from the source Task table based on the tasks for which the Task Flag is set to Activity ('M1AC') and Parent Task ID is set as blank. |
| <b>Measures</b>      |                         |                            |   |
| WORK_DUR             | Work Duration (Minutes) | M1_TASK_TYPE.AVG_DURATION  | This field is populated with the average task duration from the Task Type table. If no value is found, '0' is populated.                                      |
| EST_WORK_DUR         | Estimated Work Duration | M1_TASK.ESTIMATED_DURATION | This field is populated with the estimated task duration from the Task Type table. If no value is found, '0' is populated.                                    |



| Target Field       | Description               | Source Field   | Transformation Logic   |
|--------------------|---------------------------|--|--|
| ACT_WORK_DUR       | Actual Work Duration      | M1_TASK_LOG/<br>M1_TASK_MOB_LOG.L<br>OG_DTTM                         | This field is populated with the total time spent 'onsite' (in seconds) by the crew. It is calculated based on the log entries.  |
| WORK_ATTEMPT_CNT   | Number of Work Attempts   | M1_TASK_LOG/<br>M1_TASK_MOB_LOG.B<br>O_STATUS_CD                     | This field is populated with the number of times crew attempted to do the work (based on the number of times the crew logged with an 'Onsite' status).<br><br>If there are no log records, it is populated as '0'.   |
| TRAVEL_ATTEMPT_CNT | Number of Travel Attempts | M1_TASK_LOG/<br>M1_TASK_MOB_LOG.B<br>O_STATUS_CD                     | This field is populated with the number of times the crew traveled to the site to do the work (based on the number of times the crew logged with an 'Enroute' status).<br><br>If there are no log records, it is populated as '0'.   |
| DISPATCH_RESP_DUR  | Creation To Dispatch      | M1_TASK_LOG/<br>M1_TASK_MOB_LOG.L<br>OG_DTTM<br><br>M1_TASK.CRE_DTTM | This field is populated based on the time (in seconds) between the creation of the activity until it was dispatched (based on the difference between the creation date/time and the log date/time of the log entry for 'Dispatched' status).<br><br>If the activity has not been dispatched, it is populated as '0'.                         |
| ENROUTE_RESP_DUR   | Dispatch to Enroute       | M1_TASK_LOG/<br>M1_TASK_MOB_LOG.L<br>OG_DTTM                         | This field is populated based on the time (in seconds) it took from dispatching the activity until the crew is en route to the site (based on the difference between the maximum log date time for the entry with 'Dispatched' status and the log entry with 'En Route' status).<br><br>If there are no log records, it is populated as '0'. |

| Target Field                 | Description                   | Source Field  | Transformation Logic  |
|------------------------------|-------------------------------|---|---|
| ARRIVAL_RESP_DUR             | Enroute To Onsite             | M1_TASK_LOG/<br>M1_TASK_MOB_LOG.L<br>OG_DTTM  | This field is populated based on the time it took to travel until the crew arrived on site (based on the difference between the maximum log date time for the entry with 'En Route' status and the entry with 'Arrived' or 'Onsite' status).<br><br>If there are no log records, it is populated as '0'.                    |
| COMPLETED_RESP_DUR           | Response Time to Complete     | M1_TASK_LOG/<br>M1_TASK_MOB_LOG.L<br>OG_DTTM  | This field is populated based on the time it took for the crew to arrive on site and finish the task (based on the difference between the maximum log date time for the entry with 'Arrived' or 'Onsite' and the entry with 'Work Done' or 'Completed' status).<br><br>If there are no log records, it is populated as '0'. |
| TOT_RESP_DUR                 | Total Response Time (Minutes) | M1_TASK.DISPATCH_RE<br>SP_DUR<br><br>M1_TASK.ENROUTE_R<br>ESP_DUR<br><br>M1_TASK.ARRIVAL_RES<br>P_DUR<br><br>M1_TASK.COMPLETED<br>_RESP_DUR | This field is populated with the total time it took to complete the task, starting from the time the task was dispatched all the way to the time the task was completed.  |
| ACT_TRAVEL_DUR               | Actual Travel Duration        | M1_TASK_LOG/<br>M1_TASK_MOB_LOG.L<br>OG_DTTM  | This field is populated based on the total time the crew spent travelling to the site. Unit of measure is seconds.  |
| FACT_CNT                     | Count                         |   | This field is populated with the standard value of '1'.   |
| <b>Degenerate Dimensions</b> |                               |   |   |
| EMERGENCY_IND                | Emergency Indicator           | M1_TASK.QUEUE_FLG   | This field is populated from the source Task table based on the identified tasks. If the Queue Flag is set to 'M1ER', then populate the Emergency Indicator with '1'. Else, with '0'.   |

| Target Field        | Description                            | Source Field  | Transformation Logic   |
|---------------------|--|---|--|
| APPOINTMENT_IND     | Appointment Indicator                  | M1_TASK.APPOINTMENT_FLG   | This field is populated from the source Task table based on the identified tasks. If the Appointment Flag is set to 'Y', then populate the Appointment Indicator with '1'. Else, with '0'. |
| SAME_DAY_APPT_IND   | Same Day Appointment                   | M1_TASK_TM_WINDOW.TASK_TM_WINDOW_START_DTTM<br><br>M1_TASK.CRE_DTTM                                     | This field is populated with '1' if the appointment is made on the same day as the creation date. Else, with '0'.  |
| TASK_INFO           | Task Info String                       | M1_TASK_TYPE_L.DESCR<br><br>M1_TASK_ADDR.ADDRESS1, CITY, COUNTY, STATE<br><br>F1_BUS_OBJ_STATUS_L.DESCR | This field is populated with the concatenation of task type description, address, status code, task time window and crew for a task.   |
| CRE_DTTM            | Create Date/Time                       | M1_TASK.CRE_DTTM  |  |
| STATUS_DTTM         | Status Date/Time                       | M1_TASK.STATUS_UPDATE_DTTM  |  |
| SCHED_START_DTTM    | Scheduled Start Date/Time              | M1_TASK_TM_WINDOW.TASK_TM_WINDOW_START_DTTM   | This field is populated with '1' if the appointment is made on the same day as the window start date. Else, with '0'.  |
| SCHED_END_DTTM      | Scheduled End Date/Time                | M1_TASK_TM_WINDOW.TASK_TM_WINDOW_END_DTTM   | This field is populated with '1' if the appointment is made on the same day as the window end date. Else, with '0'.  |
| <b>Foreign Keys</b> |  |   |  |
| TASK_BO_STATUS_KEY  | Task BO Status Dimension Surrogate Key | M1_TASK.BUS_OBJ_CD<br><br>M1_TASK.BO_STATUS_CD<br><br>M1_TASK.BO_STATUS_REASON_CD                       | This field is populated based on the business object code, status code, and status reason code from the Task table.  |
| TASK_TYPE_KEY       | Task Type Dimension Surrogate Key      | M1_TASK.TASK_TYPE_CD  |  |
| SERVICE_AREA_KEY    | Service Area Dimension Surrogate Key   | M1_TASK.SVC_AREA_CD   |  |

| Target Field       | Description  | Source Field  | Transformation Logic  |
|--------------------|--|---|---|
| ADDR_KEY           | Address Dimension<br>Surrogate Key                 | M1_TASK_ADDR.ADDR<br>ESS1<br><br>M1_TASK_ADDR.ADDR<br>ESS2<br><br>M1_TASK_ADDR.ADDR<br>ESS3<br><br>M1_TASK_ADDR.ADDR<br>ESS4<br><br>M1_TASK_ADDR.CROSS<br>_STREET<br><br>M1_TASK_ADDR.SUBUR<br>B<br><br>M1_TASK_ADDR.CITY<br><br>M1_TASK_ADDR.COUN<br>TY<br><br>M1_TASK_ADDR.STATE<br><br>M1_TASK_ADDR.POSTA<br>L<br><br>M1_TASK_ADDR.COUN<br>TRY | This field is populated based<br>on the location of the task.   |
| CREW_KEY           | Crew Dimension Surrogate<br>Key                    | M1_CREW_SHFT.RESRC<br>_ID   | This field is populated from<br>the Crew table based on the<br>resource ID of the Task table.<br><br>Identify the resource ID from<br>the Crew Shift table for the<br>child task with 'Dispatched'<br>status and with maximum log<br>date/time. |
| APPT_TM_KEY        | Appointment Time<br>Dimension Surrogate Key        | M1_TASK_TM_WIND.TS<br>K_TM_WIND_START_D<br>TTM<br><br>M1_TASK_LOG/<br>M1_TASK_MOB_LOG.L<br>OG_DTTM  | This field is populated based<br>on the difference (in minutes)<br>between the appointment start<br>date time and log date time.  |
| APPT_TM_OF_DAY_KEY | Appointment Time Of Day<br>Dimension Surrogate Key | M1_TASK_TM_WIND.TS<br>K_TM_WIND_START_D<br>TTM  | This field is populated based<br>on the task time window start<br>date/time associated with the<br>task ID.   |

| Target Field         | Description                                     | Source Field   | Transformation Logic  |
|----------------------|---|--|---|
| WORK_DUR_DEV_KEY     | Work Duration Deviation Key                     | M1_TASK_TYPE.ACT_W<br>ORK_DUR<br><br>M1_TASK_TYPE.EST_W<br>ORK_DUR | This field fetches the actual work duration and estimated work duration and calculates the percentage of deviation.<br><br>((Actual Work Duration - Estimated Work Duration)/ Estimated Work Duration))*100 |
| RESP_TM_DEV_KEY      | Response Time Deviation Dimension Surrogate Key | M1_TASK_TYPE.TOT_R<br>ESP_DUR<br><br>M1_TASK_TYPE.BO_DA<br>TA_AREA | This field is populated based on the response time SLA from the Task Type table.<br><br>((Overall Response Time - Response Time SLA)/ Response Time SLA))*100   |
| CRE_DATE_KEY         | Creation Date Key                               | M1_TASK.CRE_DTTM   | This field is populated based on the creation date of the task.   |
| STATUS_DATE_KEY      | Status Date Key                                 | M1_TASK.STATUS_UPD<br>_DTTM  | This field is populated based on the status update date of the task.  |
| SCHED_START_DATE_KEY | Scheduled Start Date Key                        | M1_TASK_TM_WIND.TS<br>K_TM_WIND_START_D<br>TTM                     | This field is populated based on the scheduled start date of the task.  |
| SCHED_END_DATE_KEY   | Scheduled End Date Key                          | M1_TASK_TM_WIND.TS<br>K_TM_WIND_END_DT<br>TM                       | This field is populated based on the scheduled end date of the task.  |
| CRE_TIME_KEY         | Creation Time Key                               | M1_TASK.CRE_DTTM   | This field is populated based on the creation date/time of the task.  |
| STATUS_TIME_KEY      | Status Time Key                                 | M1_TASK.STATUS_UPD<br>_DTTM  | This field is populated based on the status update date/time of the task.   |
| SCHED_START_TIME_KEY | Scheduled Start Time Key                        | M1_TASK_TM_WIND.TS<br>K_TM_WIND_START_D<br>TTM                     | This field is populated based on the scheduled start time of the task.  |
| SCHED_END_TIME_KEY   | Scheduled End Time Key                          | M1_TASK_TM_WIND.TS<br>K_TM_WIND_DATE_DT<br>TM                      | This field fetches the most recent effective time window based on the appointment.  |
| MTR_DEVICE_KEY       | Device Dimension Surrogate Key                  | M1_TASK.BO_DATA_AR<br>EA   | This field is populated based on the external identifier value for meter device stored on the task as part of MWM-MDM integration.  |

| Target Field                   | Description                                   | Source Field             | Transformation Logic  |
|--------------------------------|---|--------------------------|---|
| SP_KEY                         | Service Point Dimension<br>Surrogate Key      | M1_TASK.BO_DATA_AR<br>EA | This field is populated based on the service point ID stored on the task as part of MWM-MDM integration.        |
| US_KEY                         | Usage Subscription<br>Dimension Surrogate Key | M1_TASK.BO_DATA_AR<br>EA | This field is populated based on the usage subscription ID stored on the task as part of MWM-MDM integration.   |
| CONTACT_KEY                    | Contact Dimension<br>Surrogate Key            | M1_TASK.BO_DATA_AR<br>EA | This field is populated based on the contact subscription ID stored on the task as part of MWM-MDM integration. |
| PER_KEY                        | Person Dimension<br>Surrogate Key             | M1_TASK.BO_DATA_AR<br>EA | This field is populated based on the person subscription ID stored on the task as part of MWM-MDM integration.  |
| ACCT_KEY                       | Account Dimension<br>Surrogate Key            | M1_TASK.BO_DATA_AR<br>EA | This field is populated based on the account ID stored on the task as part of MWM-MDM integration.              |
| SA_KEY                         | Service Agreement<br>Dimension Surrogate Key  | M1_TASK.BO_DATA_AR<br>EA | This field is populated based on the service agreement ID stored on the task as part of MWM-MDM integration.    |
| PREM_KEY                       | Premise Dimension<br>Surrogate Key            | M1_TASK.BO_DATA_AR<br>EA | This field is populated based on the premise ID stored on the task as part of MWM-MDM integration.              |
| FLD_ACTIVITY_UDD1_KEY          | Activity User Defined<br>Dimension 1 Key      |                          |   |
| FLD_ACTIVITY_UDD2_KEY          | Activity User Defined<br>Dimension 2 Key      |                          |   |
| <b>User Defined Attributes</b> |   |                          |   |
| UDM1                           | User Defined Measure 1                        |                          |   |
| UDM2                           | User Defined Measure 2                        |                          |   |
| UDM3                           | User Defined Measure 3                        |                          |   |
| UDM4                           | User Defined Measure 4                        |                          |   |
| UDM5                           | User Defined Measure 5                        |                          |   |
| UDM6                           | User Defined Measure 6                        |                          |   |
| UDM7                           | User Defined Measure 7                        |                          |   |
| UDM8                           | User Defined Measure 8                        |                          |   |
| UDM9                           | User Defined Measure 9                        |                          |   |

| Target Field                | Description                              | Source Field           | Transformation Logic   |
|-----------------------------|--|------------------------|--|
| UDM10                       | User Defined Measure 10                  |                        |  |
| UDDGEN1                     | User Defined Degenerate Dimension 1      |                        |  |
| UDDGEN2                     | User Defined Degenerate Dimension 2      |                        |  |
| UDDGEN3                     | User Defined Degenerate Dimension 3      |                        |  |
| UDDGEN4                     | User Defined Degenerate Dimension 4      |                        |  |
| UDDGEN5                     | User Defined Degenerate Dimension 5      |                        |  |
| UDDGENL1                    | User Defined Long Degenerate Dimension 1 |                        |  |
| UDDGENL2                    | User Defined Long Degenerate Dimension 2 |                        |  |
| UDDGENL3                    | User Defined Long Degenerate Dimension 3 |                        |  |
| UDDGENL4                    | User Defined Long Degenerate Dimension 4 |                        |  |
| UDDGENL5                    | User Defined Long Degenerate Dimension 5 |                        |  |
| UDDFK1_KEY                  | User Defined Dimension Foreign Key 1     |                        |  |
| UDDFK2_KEY                  | User Defined Dimension Foreign Key 2     |                        |  |
| UDDFK3_KEY                  | User Defined Dimension Foreign Key 3     |                        |  |
| UDDFK4_KEY                  | User Defined Dimension Foreign Key 4     |                        |  |
| UDDFK5_KEY                  | User Defined Dimension Foreign Key 5     |                        |  |
| <b>Data Load Attributes</b> |  |                        |  |
| DATA_SOURCE_IND             | Data Source Indicator                    | CI_INSTALLATION.ENV_ID | This field is populated with the DSI value on the source product instance configuration. This table is populated as part of the initial setup and the DSI value is extracted from the environment ID of the source system. |

---

| <b>Target Field</b> | <b>Description</b> | <b>Source Field</b> | <b>Transformation Logic</b>  |
|---------------------|--------------------|---------------------|--|
| JOB_NBR             | Job Number         |                     | This field is populated with the ODI job execution session number. |

---