

Oracle Utilities Work and Asset Cloud Service Integration to Oracle Supply Chain Management

User's Guide

Release 24C

G22959-01

December 2024

Oracle Utilities Work and Asset Cloud Service Integration to Oracle Supply Chain Management User's Guide,
Release 24C

Copyright © 2000, 2024 Oracle and/or its affiliates.

Contents

Preface	i
Audience	ii
Documentation and Resources	ii
Updates to Documentation.....	iii
Documentation Accessibility	iii
Conventions.....	iii
Acronyms.....	iii
 Chapter 1	
Overview	1-1
Integration Overview	1-2
About Oracle Supply Chain Management (SCM)	1-3
About Oracle Utilities Work and Asset Cloud Service (WACS).....	1-3
About Oracle Integration Cloud (OIC)	1-4
Supported Source Applications	1-4
 Chapter 2	
Supported Features	2-1
Business Terms	2-2
Business Flows	2-3
Business Processes.....	2-3
Storeroom Sync from ERP SCM to WACS.....	2-3
Stock Item Details Sync from ERP SCM to WACS.....	2-4
Material Reservations Creation from WACS to ERP SCM.....	2-5
Material Request Creation from WACS to ERP SCM.....	2-5
 Chapter 3	
User Operations	3-1
Creating Item in ERP.....	3-2
Associating Organizations in ERP.....	3-3
Deactivating Items in ERP.....	3-3
Creating Sub Inventories in ERP	3-3
Deactivating Sub Inventories in ERP.....	3-4
Updating Cost in ERP	3-4
Updating Quantities in ERP	3-5
Verifying the Reservation Creation in ERP.....	3-5
Verifying the Supply Request Creation in ERP	3-6
Verifying the Transfer Order Creation in ERP.....	3-6
Verifying Pick Wave Creation in ERP	3-6
Confirming Pick in ERP.....	3-6
Confirming Ship in ERP.....	3-7

Chapter 4

Data Relationships.....	4-1
Oracle Fusion ERP Cloud to Oracle Utilities Work and Asset Cloud Service Synchronization.....	4-2

Appendix A

Considerations	A-1
----------------------	-----

Appendix B

Additional Information - Integration Concepts	B-1
Oracle Supply Chain Management.....	B-2

Preface

Welcome to the Oracle Utilities Work and Asset Cloud Service Integration to Oracle Supply Chain Management User's Guide for release 24C.

This user's guide includes the information required for the integration to work effectively. It describes how to use the features in Oracle Utilities Work and Asset Cloud Service. It provides instructions for completing common tasks and provides descriptions of the fields, windows, buttons, and menus used to perform those tasks. The instructions and descriptions in this guide are based on the default product configuration for a user with full authority to use all functionality.

Note: The screenshots and images provided in this document are sample references based on the current release of Oracle Utilities Work and Asset Cloud Service Integration to Oracle Supply Chain Management. They may change based on changes to UI in the future releases.

The preface includes the following:

- [Audience](#)
- [Documentation and Resources](#)
- [Updates to Documentation](#)
- [Documentation Accessibility](#)
- [Conventions](#)
- [Acronyms](#)

Audience

This document is intended for anyone implementing the integration between Oracle Utilities Work and Asset Cloud Service and Oracle Supply Chain Management.

Documentation and Resources

For more information regarding this integration, foundation technology and the edge applications, refer to the following documents:

Product Documentation

Resource	Location
Oracle Utilities Work and Asset Cloud Service Integration to Oracle Supply Chain Management documentation	https://docs.oracle.com/en/industries/energy-water/integrations-index.html
Oracle Utilities Work and Asset Cloud Service documentation	https://docs.oracle.com/en/industries/energy-water/work-asset-cloud-service/index.html
Oracle Utilities Work and Asset Management documentation	https://docs.oracle.com/en/industries/energy-water/work-asset-management/index.html
Oracle Supply Chain Management documentation	https://docs.oracle.com/en/cloud/saas/supply-chain-and-manufacturing/index.html

Additional Documentation

Resource	Location
Oracle Integration Cloud Service documentation	Refer to the OIC documentation at: https://docs.oracle.com/en/cloud/paas/integration-cloud/index.html
Oracle Support	<p>Visit My Oracle Support at https://support.oracle.com regularly to stay informed about updates and patches.</p> <p>Refer to the <i>Certification Matrix for Oracle Utilities Products (Doc ID 1454143.1)</i> on My Oracle Support to determine if support for newer versions of the listed products is included.</p> <p>For more information, refer to the Oracle Utilities Integrations page at http://my.oracle.com/site/tugbu/productsindustry/productinfo/utilities/integration/index.htm</p>
Oracle University for training opportunities	https://education.oracle.com/

Updates to Documentation

The complete Oracle Utilities Work and Asset Cloud Service Integration to Oracle Supply Chain Management documentation set is available from Oracle Help Center at <https://docs.oracle.com/en/industries/energy-water/index.html>.

Visit [My Oracle Support](#) for additional and updated information about the product.

Documentation Accessibility

For information about Oracle's commitment to accessibility, visit the Oracle Accessibility Program website at <http://www.oracle.com/pls/topic/lookup?ctx=acc&id=docacc>.

Access to Oracle Support

Oracle customers have access to electronic support for the hearing impaired. Visit: <http://www.oracle.com/pls/topic/lookup?ctx=acc&id=info> or <http://www.oracle.com/pls/topic/lookup?ctx=acc&id=trs>

Conventions

The following text conventions are used in this document:

Convention	Meaning
boldface	Boldface type indicates graphical user interface elements associated with an action, or terms defined in text or the glossary.
<i>italic</i>	Italic type indicates book titles, emphasis, or placeholder variables for which you supply particular values.
monospace	Monospace type indicates commands within a paragraph, URLs, code in examples, text that appears on the screen, or text that you enter.

Acronyms

The following terms are used in this document:

Term	Expanded Form
OUWACS/WACS	Oracle Utilities Work and Asset Cloud Service
OUWAM/WAM	Oracle Utilities Work and Asset Management
ERP	Enterprise Resource Planning
SCM	Oracle Supply Chain Management
SID	Stock Item Details
BICC	Oracle Business Intelligence Cloud Connector
BIP	Oracle Business Intelligence Publisher

Chapter 1

Overview

This chapter provides an overview of Oracle Utilities Work and Asset Cloud Service, Oracle Supply Chain Management, and Oracle Integration Cloud. It focuses on the functionality and business standpoint of each part of the integration. It includes the following:

- [Integration Overview](#)
- [About Oracle Supply Chain Management \(SCM\)](#)
- [About Oracle Utilities Work and Asset Cloud Service \(WACS\)](#)
- [About Oracle Integration Cloud \(OIC\)](#)
- [Supported Source Applications](#)

Integration Overview

Utilities around the world are using Oracle Supply Chain Management for their supply chain and inventory management with Oracle Utilities Work and Asset Cloud Service for work and asset management. Oracle Utilities Work and Asset Cloud Service integration to Oracle Supply Chain Management will provide the set of integrations for seamless data flow between the two systems to allow users to carry out the business processes optimally using both the systems. The integration caters to customers who use Oracle Supply Chain Management for inventory management with Oracle Supply Chain Management being source for the inventory master data and transactions.

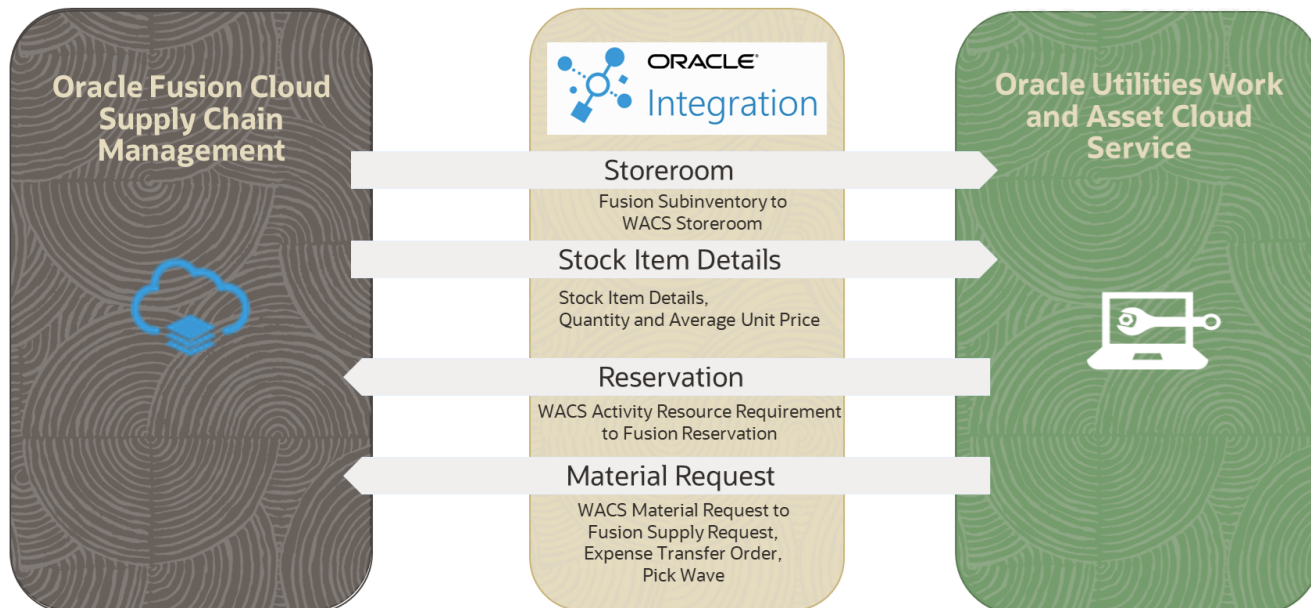
The integration supports Storeroom, Stock Item Details, Material Reservations, and Material Request synchronization flows from Oracle Supply Chain Management to Oracle Utilities Work and Asset Cloud Service.

The Material Request flow supports two integrations, Supply Request/Transfer Order Creation and Pick Wave Creation, for all transfer orders.

The Oracle Fusion Cloud Product Hub integration to Oracle Utilities Work and Asset Cloud Service release 24C or later is a prerequisite as specified in the [Supported Source Applications](#) section.

For more information about the functionality, refer to the Oracle Utilities Work and Asset Cloud Service Integration to Oracle Supply Chain Management documentation on Oracle Help Center at: <https://docs.oracle.com/en/industries/energy-water/integrations-index.html>

The following diagram illustrates the high-level features of this integration:



The major components in this implementation are:

- Oracle Utilities Work and Asset Cloud Service
- Oracle Supply Chain Management
- Oracle Integration Cloud

About Oracle Supply Chain Management (SCM)

Oracle Supply Chain Management is a cloud-based solution which helps organizations create a modern, agile, and resilient supply chain that can respond quickly to changing demand, supply, and market conditions. It is part of Oracle Fusion Cloud ERP. Some of the important functions managed by Oracle Supply Chain Management are inventory, supply chain planning, cost management, product development, order management, and many more.

About Oracle Utilities Work and Asset Cloud Service (WACS)

Oracle Utilities Work and Asset Cloud Service maintains information about assets and various features and functions around managing those assets. The solution provides a means of recording asset acquisition, maintenance, procurement, installation, and removal.

Oracle Utilities Work and Asset Cloud Service provides functionality to manage the receipt, installation, maintenance, tracking, and removal of assets. The application also manages approval processing, tracks purchasing transactions, manages inventory and resources, and tracks costs, accounting, and financial transactions.

About Oracle Integration Cloud (OIC)

Oracle Integration Cloud is a unified platform to integrate the applications, automate processes, and create applications.

Using Process Builder, business processes can be rapidly designed, automated, and managed in the cloud. Using integrations connect the applications into a continuous business flow. The integrations can be quickly developed and activated between both the applications that live in the cloud; and the applications still live on premises. The lookups help to match application specific codes between the two applications.

Integration Insights and Stream Analytics helps to simplify and extract business metrics and create custom dashboards.

Supported Source Applications

The integration requires the following applications:

- Oracle Utilities Work and Asset Cloud Service
- Oracle Utilities Work and Asset Management
- Oracle Integration Cloud
- Oracle Supply Chain Management

For the application versions, refer to the *Oracle Utilities Work and Asset Cloud Service Integration to Oracle Supply Chain Management Release Notes* included in this release.

The documentation is available on [Oracle Help Center](https://docs.oracle.com/en/industries/energy-water/integrations-index.html) at: <https://docs.oracle.com/en/industries/energy-water/integrations-index.html>

Chapter 2

Supported Features

The integration between Oracle Supply Chain Management and Oracle Utilities Work and Asset Cloud Service helps to automate the flow of assets and related information between the two applications.

For more information about the functionality, refer to the *Oracle Utilities Work and Asset Cloud Service Integration to Oracle Supply Change Management Configuration Guide* included in this release. The documentation is available on [Oracle Help Center](https://docs.oracle.com/en/industries/energy-water/integrations-index.html) at: <https://docs.oracle.com/en/industries/energy-water/integrations-index.html>

This chapter includes the following:

- [Business Terms](#)
- [Business Flows](#)
- [Business Processes](#)

Business Terms

The following table lists the business terms used in the document across the applications:

Term	Definition
Oracle Fusion ERP	
BICC	Oracle Business Intelligence Cloud Connector (BICC) can be used to extract business intelligence and other data in bulk and load it into designated external storage areas, such as UCM and object storage.
BIP	Oracle Business Intelligence Publisher (BIP) can be used to extract data from Oracle Fusion Applications in Data Integration by connecting those data sources.
Sub inventory	Sub inventories are unique physical or logical separations of material inventory, such as raw inventory, finished goods, or defective material.
Oracle Utilities Work and Cloud Service	
Storeroom	Storerooms define the physical location where stock items are stored.
Stock Item	Stock items are defined as material resources that are held in storerooms and issued to activities that require the materials to be completed.
Stock Item Details	Stock Item Detail (SID) records define how a stock item is managed in the storeroom as well as tracking quantities for stock items. Each record contains storeroom-specific information for the stock item, such as pricing, reorder information, unit of issue, unit of purchase, expense code, and more.
Inventory Adjustments	Inventory adjustments can be used to adjust inventory counts or price of stock items.
Material Reservations	On activation of material activity resource requirements (ARR) with reservation date in WACS, an user defined reservation is created in Oracle Fusion SCM. It also updates/deletes the reservation based on updates/cancellation of material ARR.
Material Request	<p>The material request from WACS creates an expense type supply request in Oracle SCM. This supply request gets converted to expense type transfer order in Oracle SCM through supply chain orchestration process of Oracle Fusion.</p> <p>Closer to the transfer order required by date, the integration creates a pick wave for each transfer order. It also reduces the user defined reservation by appropriate quantity if the WACS material request line has a material ARR attached to it with reservation.</p>

Business Flows

This integration supports the following business flows:

- [Storeroom Sync](#)
- [Stock Item Details Sync](#)
- [Material Reservations](#)
- [Material Request](#)

Business Processes

The integration scope supports the following business processes:

- [Storeroom Sync from ERP SCM to WACS](#)
- [Stock Item Details Sync from ERP SCM to WACS](#)
- [Material Reservation Integration from WACS to ERP SCM](#)
- [Material Request Integration from WACS to ERP SCM](#)

Storeroom Sync from ERP SCM to WACS

The storeroom integration transfers the sub inventory in Oracle Fusion ERP Cloud as storeroom in Oracle Utilities Work and Asset Cloud Service:

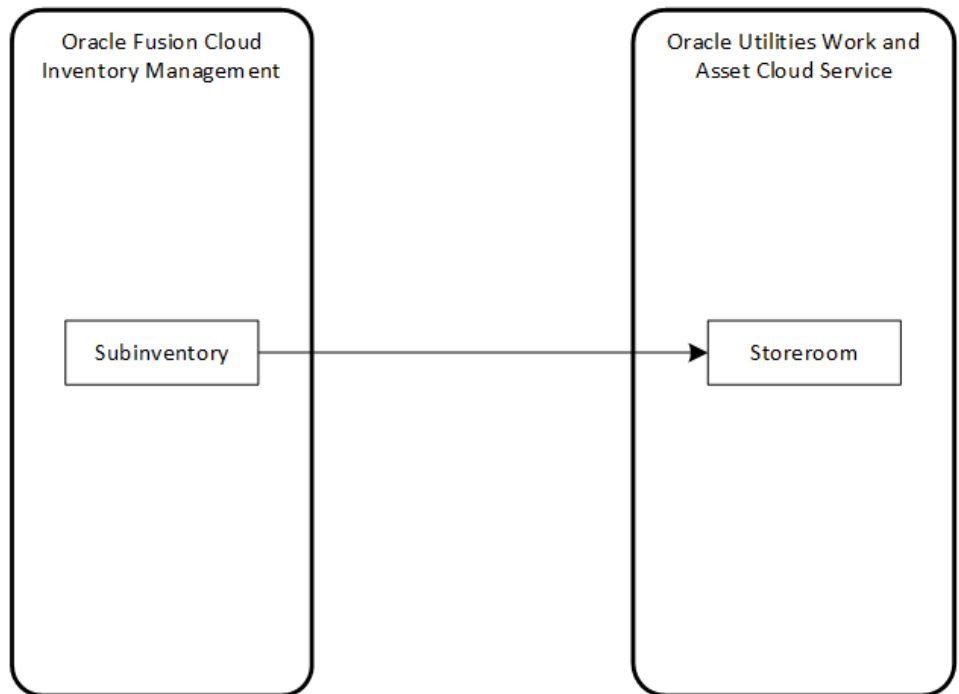
- [Active Storeroom Synchronization](#) from to Oracle Utilities Work and Asset Cloud Service
- [Inactive Storeroom Synchronization](#) from Oracle Fusion ERP Cloud to Oracle Utilities Work and Asset Cloud Service

Active Storeroom Synchronization

This process synchronizes the “Active” sub inventories from to storerooms in Oracle Utilities Work and Asset Cloud Service in bulk and incremental fashion.

Inactive Storeroom Synchronization

This process synchronizes the sub inventories in “Inactive” status from to storerooms in Oracle Utilities Work and Asset Cloud Service in bulk and incrementally.



Stock Item Details Sync from ERP SCM to WACS

Stock Item Details Integration synchronizes the following data from Fusion Inventory to Oracle Utilities Work and Asset Cloud Service:

- [Stock Item Detail Bulk Load](#) from Oracle Fusion ERP Cloud to Oracle Utilities Work and Asset Cloud Service
- [Stock Item Detail Incremental Sync](#) from Oracle Fusion ERP Cloud to Oracle Utilities Work and Asset Cloud Service
- [Item Quantities and Average Unit Price Sync](#) from Oracle Fusion ERP Cloud to Oracle Utilities Work and Asset Cloud Service

Stock Item Detail Bulk Load

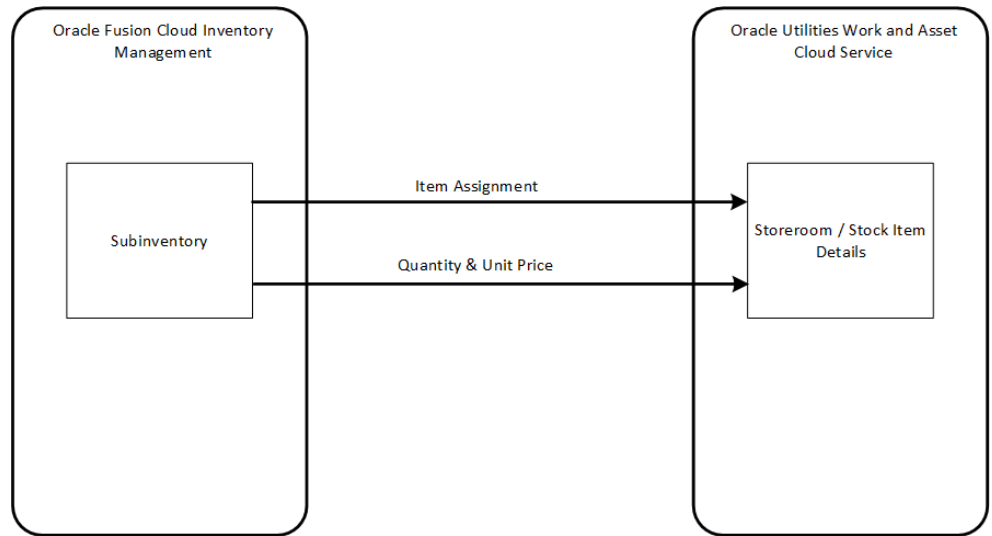
Item assignments in Oracle Fusion ERP Cloud sub inventory will be synchronized as Stock Item Details in Oracle Utilities Work and Asset Cloud Service storerooms. The bulk load will synchronize full item extract from Oracle Fusion ERP Cloud to SID in Oracle Utilities Work and Asset Cloud Service.

Stock Item Detail Incremental Sync

Incremental synchronization will use create/update item events to synchronize the item to SIDs in Oracle Utilities Work and Asset Cloud Service incrementally.

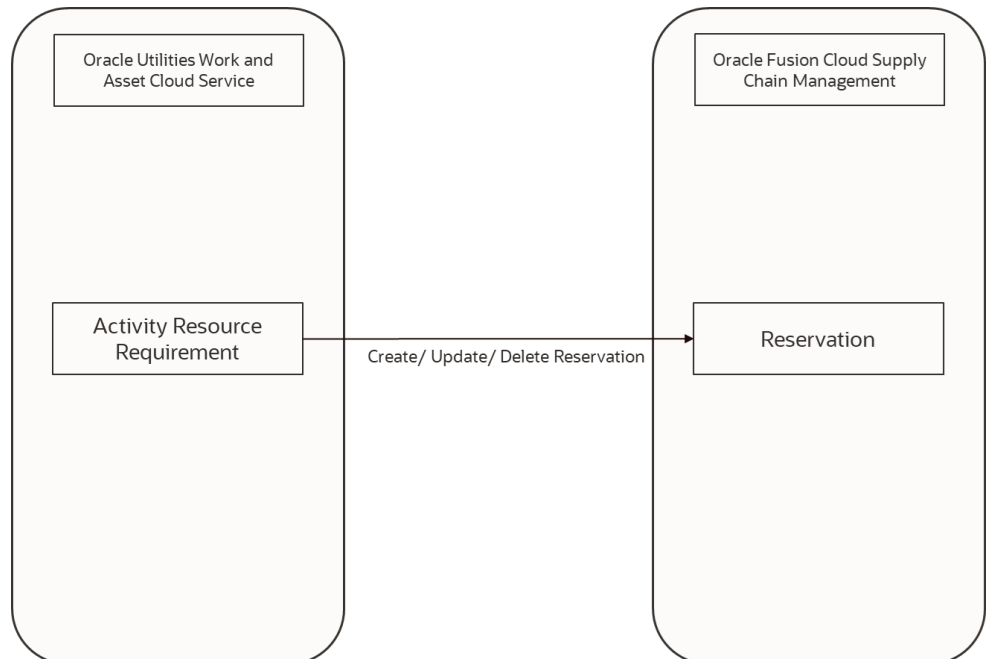
Item Quantities and Average Unit Price Sync

On-hand quantity and average unit price for an item in Oracle Fusion ERP Cloud sub inventory will be synchronized to Item Quantity in Oracle Utilities Work and Asset Cloud Service storeroom.



Material Reservation Integration from WACS to ERP SCM

The Material Reservation integration synchronizes the Material Activity Resource Requirement reservations in Oracle Utilities Work and Asset Cloud Service as User Defined Reservations in Oracle Supply Chain Management.



Material Request Integration from WACS to ERP SCM

The Material Request integration expense type creates a supply request in Oracle Fusion ERP Cloud after a Material Request is created in Oracle Utilities Work and Asset Cloud Service. This supply request creates an expense type transfer order. The pick wave for the transfer order is also created in Oracle Supply Chain Management nearer to the required by date.

The integration includes the following flows:

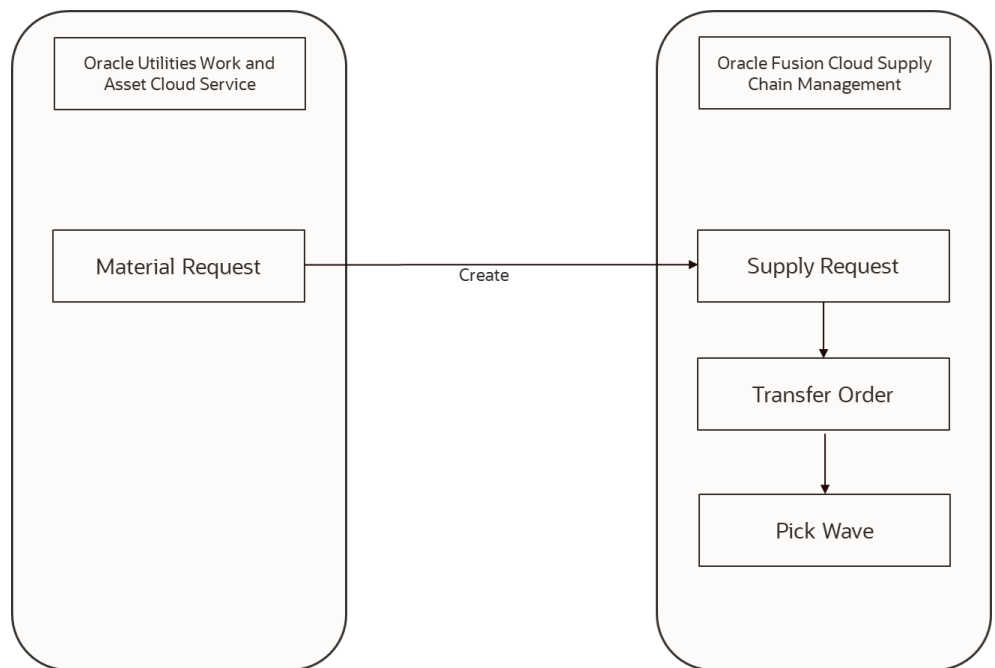
- [Supply Request Creation](#)
- [Pick Wave Creation](#)

Supply Request Creation

The material request from Oracle Utilities Work and Asset Cloud Service creates an expense type supply request in Oracle Supply Chain Management. This supply request gets converted to expense type transfer order in Oracle Supply Chain Management through supply chain orchestration process of Oracle Fusion.

Pick Wave Creation

Closer to the transfer order required by date, the integration creates a pick wave for each transfer order. It also reduces the user defined reservation by appropriate quantity if the Oracle Utilities Work and Asset Cloud Service material request line has a material ARR attached to it with reservation.



Chapter 3

User Operations

This chapter describes the following user operations and the steps to perform those operations:

- [Creating Item in ERP](#)
- [Associating Organizations in ERP](#)
- [Deactivating Items in ERP](#)
- [Creating Sub Inventories in ERP](#)
- [Deactivating Sub Inventories in ERP](#)
- [Updating Cost in ERP](#)
- [Updating Quantities in ERP](#)
- [Verifying the Reservation Creation in ERP](#)
- [Verifying the Supply Request Creation in ERP](#)
- [Verifying the Transfer Order Creation in ERP](#)
- [Verifying Pick Wave Creation in ERP](#)
- [Confirming Pick in ERP](#)
- [Confirming Ship in ERP](#)

Creating Item in ERP

To create an inventory item in ERP:

1. Login to Oracle Fusion ERP Cloud.
2. Navigate to **Product Management > Product Information Management**.
3. From the **Tasks** menu, click **Create Item**.
4. In the **Create Item** pop-up screen:
 - a. Select the **Organization**.
 - b. Mention the number of items to create.
 - c. Select the **Item Class**.
 - d. Select the **Template**.
 - e. Click **OK**.
5. On the **Create Item** page:
 - a. Enter the **Item Number**.
 - b. Add the **Description**.
 - c. Select the **Item Status**.

Note: Only items with Active status will be synchronized to Oracle Utilities Work and Asset Cloud Service as part of the Item Creation request.
 - d. Select Life Cycle Phase, User Item Type, and Pack Type.
 - e. On the **Overview** tab, select the primary **Unit of Measure**.
 - f. On the **Categories** tab, add the Oracle Utilities Work and Asset Cloud Service category and the Oracle Utilities Work and Asset Cloud Service catalog.
 - g. On the **Specifications** tab, under **Item Organization**, do the following:
 - a. On the **Service** tab, select **Asset > Enable Asset Tracking** value.

Note: Only “Not Tracked” assets are supported in this release.
 - b. On the **Inventory** tab, select **Lot > Control** value.

Note: Only “No Lot Control” items are supported in this release.
 - c. On the **Purchasing** tab, select **Unit of Issue** value.
 - d. On the **Sales and Order Management** tab, select Internally Transferable > Yes, Transfer Order Enables > Yes.
 - e. On the Planning tab, select MPS MRP Planning > Planning Method > Not Planned.
 - h. Click **Save**.

This will trigger Item Create Event, which in turn will trigger the integration flow that is subscribed to the Item Create Event.

Associating Organizations in ERP

To associate organizations in Oracle Fusion ERP Cloud:

1. Performs the steps listed in the [Creating Item in ERP](#) section.
2. On the **Association** tab, click **Select and Add**.
3. Select the **Organization** and save it.

Deactivating Items in ERP

To deactivate an item in Oracle Fusion ERP Cloud:

1. Login to Oracle Fusion ERP Cloud.
2. Navigate to **Product Management > Product Information Management**.
3. From the **Tasks** menu, click **Manage Items**.
4. Search for the item.
5. Select the item record.
6. Update the **Item Status** to “Inactive”.
7. Save it.

Creating Sub Inventories in ERP

To create a sub inventory in Oracle Fusion ERP Cloud:

1. Login to Oracle Fusion ERP Cloud.
2. Navigate to **Other > Setup and Maintenance**.
3. From **Setup**, select the **Manufacturing and Supply Chain Materials Management** feature.
4. In the **Functional Areas** section, select **Inventory Management**.
5. From the **Tasks** menu, select **Search**.
6. Search for **Manage Subinventories and Locators** and select it.
7. Select **Organization** and click **OK**.
8. In the **Search Result** region, click **Create Icon**.
9. Add the following details in the **Create Subinventory Summary** section:
 - Subinventory, Description, End Date
 - Material Status: Active
 - Subinventory Type: Storage/Regular
 - WACS Storeroom flag: Yes
10. Add the following details in the **Location** section:
 - Locator Structure: Four-Segment Locator Structure Instance

- Asset Subinventory: Yes
11. Click **Save and Close**.

Deactivating Sub Inventories in ERP

To deactivate a sub inventory in Oracle Fusion ERP Cloud:

1. On the **Subinventory** page, provide the **End Date**.
2. This should deactivate the storeroom in Oracle Utilities Work and Asset Cloud Service.

Updating Cost in ERP

There are multiple ways cost can be derived in Oracle Fusion ERP Cloud. The current scenario is for Standard Cost.

To update the cost in Oracle Fusion ERP Cloud:

1. Login to Oracle Fusion ERP Cloud.
2. Navigate to **Supply Chain Execution > Cost Accounting**.
3. From the **Task** menu:
 - a. Click **Manage Cost Scenarios**.
 - b. Create a cost scenario.
 - a. Select the **Cost Organization**, **Cost Book**, and **Effective Date**.
 - b. Also, select the **Scenario Type** and **Rollup Scope**.
 - c. Provide the item number in the **Item Details** section.
 - d. Save and close.
 - c. Create standard cost:
 - a. Navigate to **Task menu > Manage Standard Cost**.
 - b. Create the standard cost.
 - c. Select the cost scenario created in step 3b.
 - d. Enter the item.
 - e. Enter the valuation unit.
 - f. Add the standard cost details.
 - g. Select the cost element and expense pool.
 - h. Enter the unit cost.
 - i. Save it.
4. To fetch the cost updated record, run the batch job.
 - a. Navigate to the **Manage Cost Scenarios** page.

- b. Search the cost scenario.
 - a. In the scenario, navigate to **Actions** and select **Update Standard Cost**.
 - b. Enter the submission notes (as a hint to search the current process) and submit.
 - c. After the batch job is completed, the status will be changed from “New” to “Completed Successfully”.

Updating Quantities in ERP

To update quantity in Oracle Fusion Cloud ERP:

1. Login to Oracle Fusion Cloud ERP.
2. Navigate to **Supply Chain Execution > Inventory Management**.
3. On the **Tasks** menu, select the respective option. Example: Create Miscellaneous Transaction
 - a. Select the **Orgnaization** and **Type**.
 - b. For **Current Item Cost**, select “Yes”.
4. In the **Transaction Lines** section:
 - a. Enter the item for which the quantity needs to be adjusted.
 - b. Select the sub inventory.
 - c. Enter the quantity.
 - d. Select the account.
5. Click **Save**.
6. To verify if the quantity is added for the selected item:
 - a. On the **Task** menu, click **Manage Item Quantities**.
 - b. Search for the item.
 - c. Check the value for quantity.

Verifying the Reservation Creation in ERP

To check if a reservation is created in Oracle Fusion Cloud ERP:

1. Login to Oracle Fusion Cloud ERP.
2. Navigate to **Supply Chain Execution > Inventory Management**.
3. On the **Task** menu, click **Manage Reservations and Picks**.
4. Under **Advanced Search**, enter your **Organization** and **Item Number** and click **Search**.
5. In the **Search Results > Demand > User-Defined**, the reservation is displayed with Demand Source Name WACS-<ARR Id>.

Verifying the Supply Request Creation in ERP

To verify whether a Supply Request is created in Oracle Fusion Cloud ERP:

1. Login to Oracle Fusion Cloud ERP.
2. Navigate to **Supply Chain Execution > Supply Orchestration**.
3. On the **Search** menu, click and enter the **Supply type** as “TRANSFER” and **Supply Request Reference Number** (WACS-<Material Request Header Id>).
4. Click **Search**.
5. You can also find the error information of the Supply Request creation that failed.

Verifying the Transfer Order Creation in ERP

To check if a Transfer Order is created in Oracle Fusion Cloud ERP:

1. Login to Oracle Fusion Cloud ERP.
2. Navigate to **Supply Chain Execution > Inventory Management**.
3. On the **Task** menu, click **Manage Transfer Orders**.
4. Click **Add Field** and select “Supply Request Reference Number”.
5. Enter the **Source Organization** and **Supply Request Reference Number** (WACS-<Material Request Header Id>).
6. Click **Search**.

Verifying Pick Wave Creation in ERP

To check if a Pick Wave is created in Oracle Fusion Cloud ERP:

1. Login to Oracle Fusion Cloud ERP.
2. Navigate to **Supply Chain Execution > Inventory Management > Tasks (Show tasks > Picks) > Confirm Pick slips**.
3. To search for the pick slips, enter the transfer order number in the **Order** field.
4. Click **Search**.

Confirming Pick in ERP

Confirming pick is not part of the solution, it will be part of the customer’s business process. However, the steps are provided for reference.

To confirm Pick Wave in Oracle Fusion Cloud ERP:

1. On the **Infolets in the Product Management** Home page, you can see a new pick waiting for confirmation. Click it.

Alternatively, you can also navigate to the page as follows:

- a. Navigate to **Supply Chain Execution > Inventory Management > Tasks (Show tasks > Picks) > Confirm Pick slips**.

- b. Select **Pick slip** from the drop-down list and do a blank search.
2. Select the pick slip that includes the order number.
3. Select your line and click **Confirm**.
4. Click **Ship Confirm**.

On the **Manage Items Quantities** page, the requested quantity will be moved to staging sub inventory.

Confirming Ship in ERP

Confirming ship is not part of the solution, it will be part of the customer's business process. However, the steps are provided for reference.

To confirm Pick Wave in Oracle Fusion Cloud ERP:

1. Edit the shipment that you want to confirm.
2. Populate the **Volume** and **Gross weight** and click **Ship Confirm**.

Alternatively, you can also navigate to this page as below:

- a. Navigate to Supply Chain Execution > Inventory Management > Tasks (Show tasks > Shipments) > Manage Shipments.
 - b. Search with **Ship-from Organization** and sort by **Initial Ship Date (Desc)**.
 - c. Select your **Shipment**.
3. Search for **Item in Manage Item Quantities**. You can see that the on-hand quantity has been decreased by the requested quantity.

Chapter 4

Data Relationships

Both Oracle Utilities Work and Asset Cloud Service and Oracle Supply Chain Management applications should be synchronized to make sure the data is correlated in the applications to maintain data integrity. This chapter focuses on the following synchronizations:

- [Oracle Fusion ERP Cloud to Oracle Utilities Work and Asset Cloud Service Synchronization](#)

Oracle Fusion ERP Cloud to Oracle Utilities Work and Asset Cloud Service Synchronization

The following synchronizations are mandatory for this integration. Make sure the Oracle Fusion Cloud Product Hub integration to Oracle Utilities Work and Asset Cloud Service is in place to synchronize the items from Oracle Fusion ERP Cloud to Oracle Utilities Work and Asset Cloud Service.

Make sure the following synchronization is in place to maintain data integrity:

- [Item Synchronization](#)

Item Synchronization

Inventory items created in Oracle Supply Chain Management should be synchronized as stock items in Oracle Utilities Work and Asset Cloud Service.

Appendix A

Considerations

Following are the considerations and known limitations in this integration:

- The Stock Item Details integration does not consider tracked assets in the 24A release.
- Remove the “Pending” status monitor at Stock Item Ongoing Sync Request business object in Oracle Utilities Work and Asset Cloud Service, so that the stock item is created as soon as the synchronization request is created. It allows to create the Stock Item Details after the stock item is created.
- If the Storeroom SID synchronization flow fails with the following error, follow the instructions in Doc ID 2786681.1 for resolution:
“You must enter at least 3 characters in one of these fields:
ItemNumber,ItemDescription,Keyword. (EGP-2776154).”
- Make sure the “LastRunDateTime” scheduled parameter is passed in the “MM-dd-yyyy” format while configuring the scheduler or running the “OU ERPSCM WACS Stock Item Detail Inv Adj Extract” integration.
- If Inventory Adjustment Extract does not extract any records, check if the BI report returns any records by executing it from the Oracle Fusion ERP Cloud UI. If it does not return any data, verify if the parameters on the **Data Model** page are enabled. If the parameters are not shown in the **Data** tab on the **Data Model** screen, add a default value and save it. Make sure the parameter is visible and then, remove the default value and save it.
- The Storeroom Extract BICC job extracts all types of subinventories from Oracle Fusion ERP Cloud.

Appendix B

Additional Information - Integration Concepts

This chapter includes additional information about terms and concepts required for this integration. It describes examples of several use cases and defines key terms for the following:

- [Oracle Supply Chain Management](#)

Oracle Supply Chain Management

This section describes the following processes executed/configured in Oracle Supply Chain Management:

- [Scheduled Processes](#)

Scheduled Processes

As part of Bulk Item load, the Item Import process is submitted. When this process is invoked, access the related scheduled processes as follows:

1. Login to Oracle Fusion ERP Cloud.
2. Navigate to **Tools > Schedules Processes**. By default, it displays the list of recent jobs.
3. To verify the status of a particular job, in the **Search** pane, enter the **Process ID** and search.

Note: The Process ID can be retrieved when the scheduled process is submitted.