

Oracle Utilities Work and Asset Management

Quick Install Guide

Release 25.4

G26732-01

April 2025

Also used with:

Oracle Utilities Operational Device Management v25.4

Oracle Utilities Work and Asset Management Quick Install Guide

Copyright © 2000, 2025 Oracle and/or its affiliates.

Contents

Preface	i
Audience	ii
Related Documents	ii
Updates to Documentation	ii
Conventions	iii
Acronyms	iii
Additional Resources	iii
Chapter 1	
Overview	1-1
Product Overview	1-2
Installation Overview	1-2
Installation Types	1-4
Package Contents	1-5
Documentation	1-5
Installation Packages	1-5
Readiness Checklist	1-6
Chapter 2	
Supported Platforms and Hardware Requirements	2-1
Operating Systems and Application Servers	2-2
Hardware Requirements	2-3
Application Server Memory Requirements	2-3
ESRI Integration Supported Versions (WAM Only)	2-4
ArcGIS Server Version Compatibility	2-4
ArcGIS Desktop Version Compatibility	2-5
Support for Software Patches and Upgrades	2-5
Chapter 3	
Planning the Installation	3-1
Installation Considerations	3-2
Prerequisite Software List	3-2
Prerequisite Software for Database Server	3-2
Prerequisite Software for Application Server	3-2
Web Browser Requirements	3-3
Installing Prerequisite Software	3-3
Readiness Checklist	3-3
Chapter 4	
Installing Oracle Utilities Work and Asset Management - Initial Installation	4-1
Initial Installation Procedure	4-1
Chapter 5	

Upgrading Oracle Utilities Work and Asset Management	5-1
Upgrade Paths	5-2
Before You Upgrade	5-2
Upgrade Procedure.....	5-2
 Chapter 6	
Installing Oracle Utilities Work and Asset Management - Demo Installation.....	6-1
Before You Install	6-2
Demo Installation Procedure.....	6-2

Preface

Welcome to the Oracle Utilities Work and Asset Management Quick Install Guide. This document provides an overview of installing Oracle Utilities Work and Asset Management V25.4.

The preface includes the following:

- [Audience](#)
- [Related Documents](#)
- [Updates to Documentation](#)
- [Conventions](#)
- [Acronyms](#)
- [Additional Resources](#)

Audience

This guide is intended for anyone interested in the process of installing the following:

- Oracle Utilities Work and Asset Management
- Oracle Utilities Operational Device Management

To complete installation you should have:

- Administrative privileges on the host where you are installing the software.
- Experience installing and configuring application servers and other software (preferable).

Related Documents

For more information on this release, refer to the following documents:

Installation Guides

- Oracle Utilities Work and Asset Management Release Notes
- Oracle Utilities Work and Asset Management Quick Install Guide
- Oracle Utilities Work and Asset Management Installation Guide
- Oracle Utilities Work and Asset Management Database Administrator's Guide
- Oracle Utilities Work and Asset Management Licensing Information User Manual

User Guides

- Oracle Utilities Work and Asset Management User Guides
- Oracle Utilities Operational Device Management User Guides

Supplemental Documents

- Server Administration Guide
- Security Guide

Updates to Documentation

The complete documentation is available on the Oracle Utilities Work and Asset Management and [Oracle Utilities Operational Device Management](#) pages on [Oracle Help Center](#).

Visit [My Oracle Support](#) for additional and updated information about the product.

Conventions

The following text conventions are used in this document:

Convention	Meaning
boldface	Boldface type indicates graphical user interface elements associated with an action, or terms defined in text or the glossary.
<i>italic</i>	Italic type indicates book titles, emphasis, or placeholder variables for which you supply particular values.
monospace	Monospace type indicates commands within a paragraph, URLs, code in examples, text on the screen, or text that you enter.

Acronyms

The following acronyms are used in this document:

Term	Expanded Form
ODM	Oracle Utilities Operational Device Management
WAM	Oracle Utilities Work and Asset Management
OUAF	Oracle Utilities Application Framework

Additional Resources

For more information and support, visit the [Oracle Support](#) website.

Chapter 1

Overview

This chapter provides an overview of the Oracle Utilities Work and Asset Management (WAM) product and installation process, including:

- [Product Overview](#)
- [Installation Overview](#)
- [Installation Types](#)
- [Package Contents](#)
- [Readiness Checklist](#)

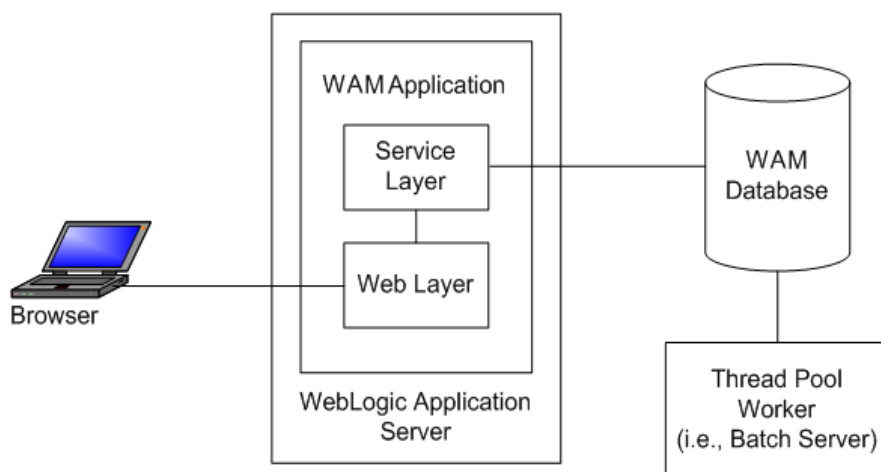
Refer to the *Oracle Utilities Work and Asset Management User Guides*, *Oracle Utilities Operational Device Management User Guides*, and *Release Notes* for a detailed overview of the business processes and new functionality in this release.

Product Overview

Oracle Utilities Work and Asset Management is housed in the Oracle WebLogic J2EE Web Application Server. The system is comprised of two layers: web and service. The application is accessed by using a browser to connect to the web layer.

Oracle Utilities Work and Asset Management data is stored in the Oracle Database. For processing large amounts of data, the system provides a thread pool worker (batch server) which interacts with the same database.

The following figures provide an overview of the Oracle Utilities Work and Asset Management and Oracle Utilities Operational Device Management products:

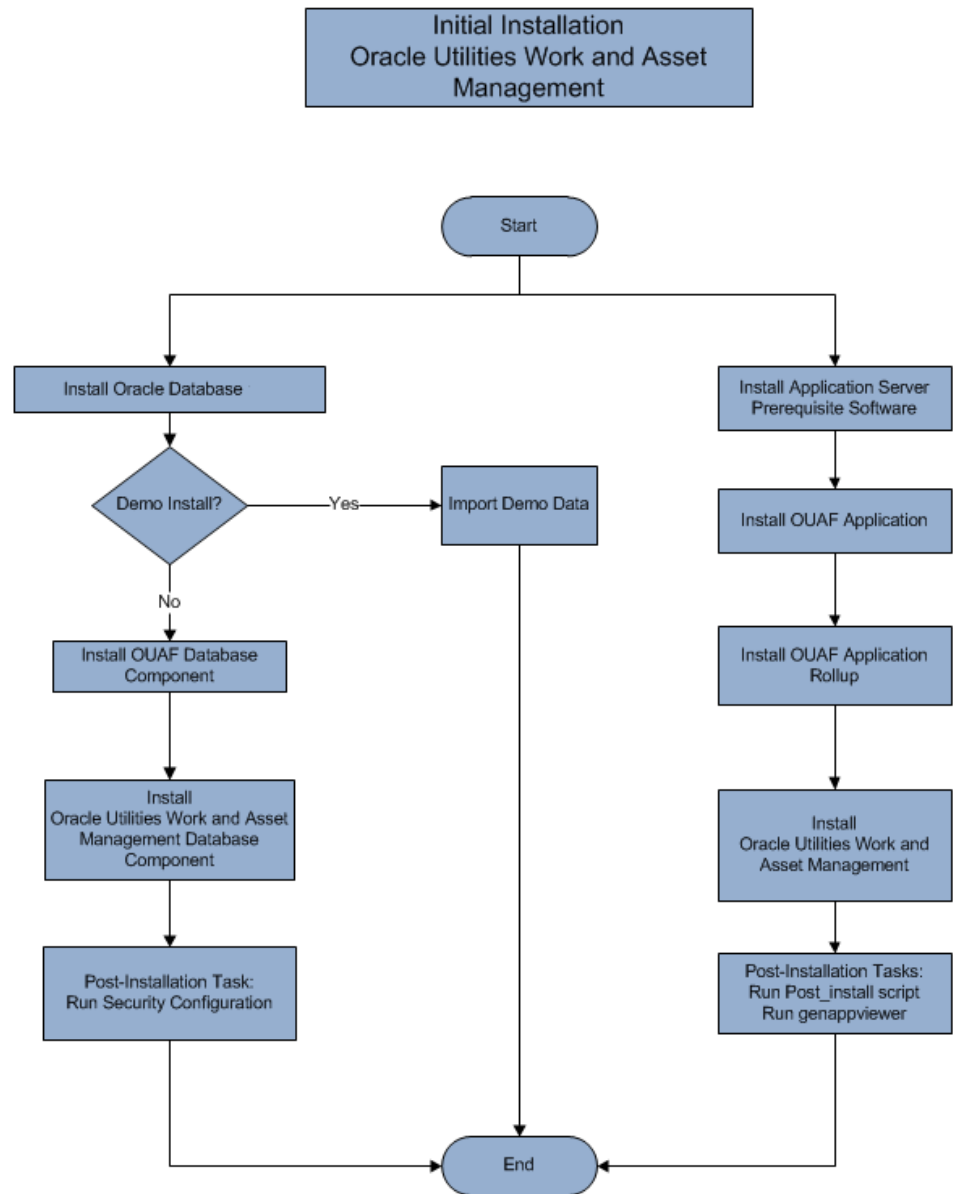


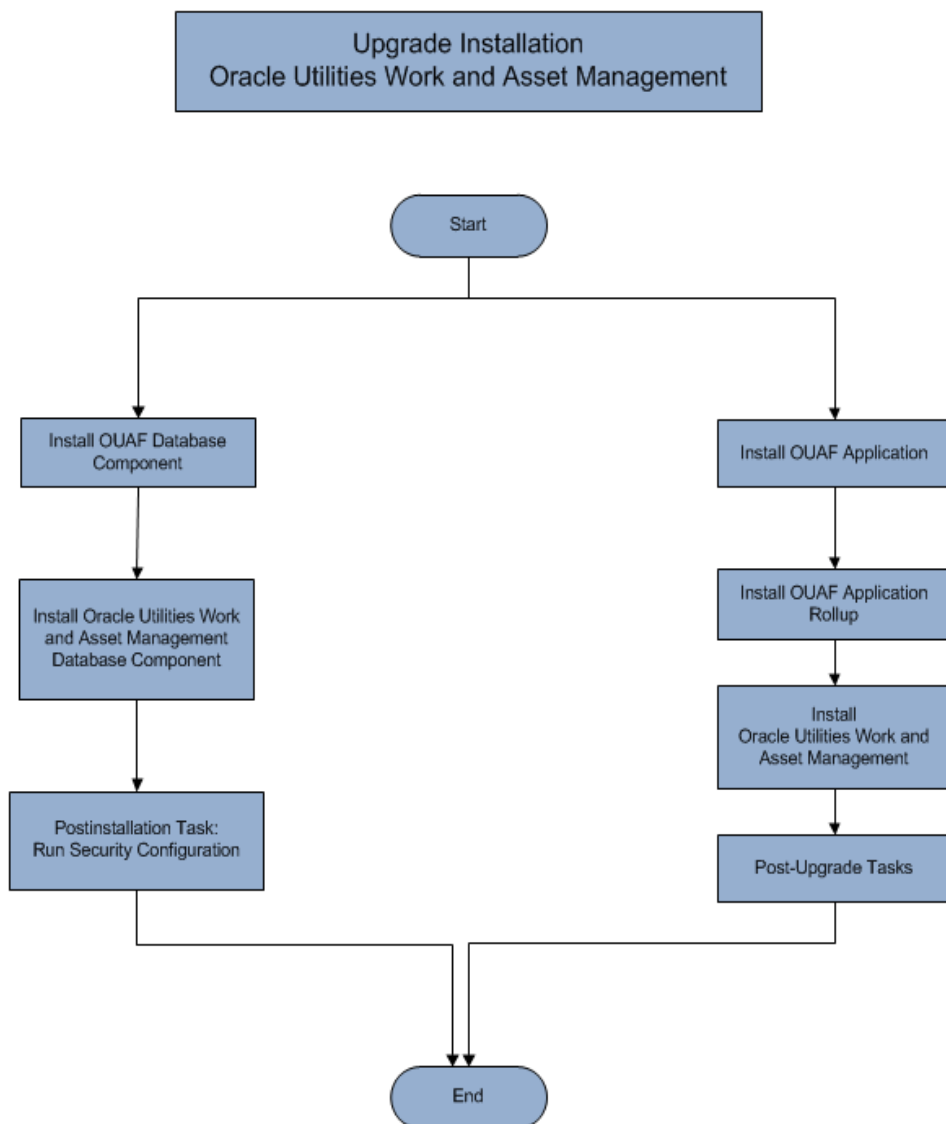
Refer to the *User Guides* for information about the features and functionality in this release.

Installation Overview

Oracle Utilities Work and Asset Management consists of several components, all of which need to be installed for a successful installation. Certain prerequisite software may need to be installed before installing each of these components.

The following figure details the workflow for the initial and demo installation process for Oracle Utilities Work and Asset Management.





Refer to the [Prerequisite Software List](#) section for information about the prerequisite software.

Installation Types

The first step in the installation procedure is to determine the installation type that meets your business requirements. The following are the possible installation types:

- **Initial Installation:** Installing Oracle Utilities Work and Asset Management as a clean/new install - a base installation, typically used for a production environment.
- **Upgrade Installation:** An upgrade installation from V2.4.0.1.1 to V25.4.
- **Demo Installation:** A base installation with pre-populated demo data, typically used for demonstration or training purposes.

Package Contents

The following documentation and installation packages are part of the product package.

- [Documentation](#)
- [Installation Packages](#)

Documentation

Installation Guides

- Oracle Utilities Work and Asset Management Release Notes
- Oracle Utilities Work and Asset Management Quick Install Guide
- Oracle Utilities Work and Asset Management Installation Guide
- Oracle Utilities Work and Asset Management Database Administrator's Guide
- Oracle Utilities Work and Asset Management Licensing Information User Manual

User Guides

- Oracle Utilities Work and Asset Management User Guides
- Oracle Utilities Operational Device Management User Guides

Supplemental Documents

- Server Administration Guide
- Security Guide

Installation Packages

- Oracle Utilities Work and Asset Management V25.4 Multiplatform
- Oracle Utilities Work and Asset Management V25.4 Oracle Database Multiplatform
- Oracle Utilities Application Framework V25.4 Multiplatform
- Oracle Utilities Work and Asset Management V25.4 Reports
- Oracle Utilities Work and Asset Management V25.4 ESRI Integration

Readiness Checklist

The following checklist provides steps to complete to install Oracle Utilities Work and Asset Management.

For more information, refer to the instructions in the *Oracle Utilities Work and Asset Management Installation Guide*.

1. Confirm that the recommended hardware is ready. Refer to [Supported Platforms and Hardware Requirements](#) for more details.
2. Install prerequisite software. Refer to the [Planning the Installation](#) section for more details.
3. Download the Oracle Utilities Work and Asset Management V25.4 components from Oracle Software Delivery Cloud.
4. Go through the [Installation and Configuration Worksheets](#) to understand the configuration menu.
5. Determine the type of installation then follow the guidelines provided for that type:
 - Initial Installation
 - Upgrade Installation
 - Demo Installation
6. Perform post-installation tasks, as applicable.
7. Install optional products, as applicable.

Note: For ESRI integration functionality, you must purchase ESRI ArcGIS Server 10.x software or online cloud subscription from ESRI.

Chapter 2

Supported Platforms and Hardware Requirements

This installation is certified to operate on many operating system, application server and database server combinations. The following sections provide information on the supported platforms and requirements, including:

- [Operating Systems and Application Servers](#)
- [Hardware Requirements](#)
- [Application Server Memory Requirements](#)
- [ESRI Integration Supported Versions \(WAM Only\)](#)
- [Support for Software Patches and Upgrades](#)

Operating Systems and Application Servers

This section details the operating system and application server combinations on which this version of Oracle Utilities Work and Asset Management is supported.

Application Server Operating Systems

- Oracle Linux 8.x or 9.x (64-bit) for x86_64
- Windows 11 Version x and Windows Server 2022 (for OUA SDK use only)

Prerequisite Application Server Software

- Oracle Database Client 19c
- Oracle Java SE Development Kit 17.0.x (Windows and Linux platforms only)

Notes:

Oracle Linux is 100% user space-compatible with Red Hat Enterprise Linux, therefore, Oracle Utilities Application Framework is also supported on Red Hat Enterprise Linux.

Refer to the *Oracle Utilities Application Framework Database Administrator's Guide* for information on Oracle database server requirements.

Refer to the [Certification Matrix for Oracle Utilities Products \(Document ID 1454143.1\)](#) on [My Oracle Support](#) to determine if support for newer versions of the listed products have been added.

Please note the following:

- Version numbers marked with a “+” are the MINIMUM version supported. That version and all future 4th digit updates will be supported.
Example: Oracle 19c means that 19 and any higher versions of Oracle 19 are supported.
- An “x” indicates that any version of the digit designed by the “x” is supported.
Example: Linux 8.x indicates that any version of Linux 8 (8.0, 8.1, 8.2 etc) will be supported.

Windows Server

- Windows Server is **not** supported for Production environments. Wherever Windows Server is referenced within this guide, it is supported for Test or Development environments **only**.

WebLogic Server

- Oracle WebLogic Server (Fusion Middleware Infrastructure) 14.1.2
- Customers must download Oracle WebLogic Server from the Oracle Software Delivery Cloud.

Oracle Database Server

Prerequisite database server software (on any vendor supported platform where x is vendor supported version):

- Oracle 19c (64-bit) on-premises and cloud (ADB)

Oracle VM Support

This version of Oracle Utilities Work and Asset Management is supported on Oracle VM Server for x86 for supported releases of Oracle Linux and Microsoft Windows operating systems.

Refer to [My Oracle Support](#) knowledge base article 249212.1 for Oracle's support policy on VMWare.

Hardware Requirements

The client side hardware requirements for Oracle Utilities Work and Asset Management are as follows:

Configuration	Processor	Memory (RAM)	Storage	Monitor Display
Minimum	2 gigahertz (GHz) or faster with 2 or more cores *	8 GB **	128 GB or higher ***	Refer to the Redwood Large resolution (currently 1024px).
Recommended	3 gigahertz (GHz) or faster with 2 or more cores *	16 GB **	250 GB or higher ***	

* or comparable processor

** more RAM may be needed for more graphic intensive application features, such as Oracle Utilities Work and Asset Management's GIS Viewer or CM Portals that contain numerous graphs.

*** to support browser caching

Note that the hardware requirements above are based on running the application only, and without any additional software running concurrently. If your client setup requires other software running, please adjust the requirements to account for them.

Application Server Memory Requirements

For each application server environment a minimum of 6 GB of real memory is required, plus 6 GB of swap space. The approximate disk space requirements in a standard installation are as follows (the size represents the MINIMUM required):

Location	Size	Usage
Install Dir ("\$SPLEBASE") Location	10 GB recommended 5 GB minimum	Location where the application and Framework get installed. Startup, shutdown and other online log files are stored here. The size and space that is used should be monitored because various debugging options can significantly affect the size of log files. Note: This does not include the size of the edge product.

Location	Size	Usage
Log Dir ("\$SPLOUTPUT") Location	10 GB recommended 2 GB minimum	Used for storing batch log files and output from batch jobs. The size of this space should be influenced by which batches are run and how often, and the amount of debugging information that is collected.
Location of the application web work files on the web servers	5 GB recommended 2 GB minimum	Used by various web server vendors to expand the application. It should be considered when installing these products. Refer to the individual web server documentation to determine the location of the temporary files.
Installation Temporary Area	10 GB minimum	The application gets installed from this location. You need enough space to un-compress the files and install the application.
Oracle Data Area	10 GB minimum	Location is where the Oracle database data files are stored. The size of this space should be based on the requirements of the production environment. For an initial or demo database install 4 GB should be sufficient.

ESRI Integration Supported Versions (WAM Only)

This section provides information on ArcGIS Server and ArcGIS Desktop compatibility with Oracle Utilities Work and Asset Management.

ArcGIS Server Version Compatibility

Oracle Utilities Work and Asset Management can potentially send outbound messages to the ArcGIS Server in either SOAP or REST formats. Please refer to the table below for certified message formats at each supported ArcGIS Server version.

ArcGIS Server Version	REST (Work Location and Asset)	SOAP (Work Location)	SOAP (Asset)
10.8.1	Yes	Yes (With TimeReference tag)	Yes
10.9.1	Yes	Yes (With TimeReference tag)	Yes

ArcGIS Server 10.9.1 should be used with ArcGIS Desktop 10.8.2 and ArcGIS Server 10.8.1 should be used with ArcGIS Desktop 10.8.1.

ArcGIS Desktop Version Compatibility

The following versions of ArcGIS Desktop are supported with Oracle Utilities Work and Asset Management.

- 10.8.1
- 10.8.2

Support for Software Patches and Upgrades

Due to the ongoing nature of software improvement, vendors will issue patches and service packs for the operating systems, application servers and database servers on top of specific versions that Oracle Utilities Work and Asset Management has been tested with.

If it is necessary to apply an upgrade, please do so in a test environment that is running on the same platform as your production environment prior to updating the Oracle Utilities Work and Asset Management production environment.

Always contact Oracle Utilities Work and Asset Management Support prior to applying vendor updates that do not guarantee backward compatibility.

Chapter 3

Planning the Installation

This chapter provides information for planning an Oracle Utilities Work and Asset Management installation, including:

- [Installation Considerations](#)
- [Prerequisite Software List](#)
- [Installing Prerequisite Software](#)
- [Readiness Checklist](#)

Before Installation

Refer to [My Oracle Support](#) for up-to-date additional information about installing Oracle Utilities Work and Asset Management.

Prerequisite Oracle Utilities Application Framework Patches

Oracle Utilities Application Framework patches must be installed prior to installing Oracle Utilities Work and Asset Management. This step is included as part of the installation instructions.

Installation Considerations

Refer to the [Installation Considerations](#) section in the *Oracle Utilities Work and Asset Management Installation Guide* for detailed instructions on installing the prerequisite software.

Prerequisite Software List

Refer to the [Prerequisite Software List](#) section in the *Oracle Utilities Work and Asset Management Installation Guide* for detailed instructions on installing the prerequisite software.

Before you install Oracle Utilities Work and Asset Management, you must install prerequisite software. Refer to the respective installation documentation of the software for instructions on downloading and installing.

This section includes information on the following:

- [Prerequisite Software for Database Server](#)
- [Prerequisite Software for Application Server](#)
- [Web Browser Requirements](#)

Prerequisite Software for Database Server

The prerequisite software for the database component of Oracle Utilities Work and Asset Management includes:

- Oracle 19c (64-bit) on-premises and cloud (ADB)

This is required for installing the database component of the Oracle Utilities Work and Asset Management product.

Prerequisite Software for Application Server

The prerequisite software for the application component of Oracle Utilities Work and Asset Management is as follows:

- Oracle Database Client 19c
- Oracle Java SE Development Kit 17.0.x (Windows and Linux platforms only)

Web Browser Requirements

The web browsers listed below are supported when used on each of the operating systems indicated:

Browser	Windows Operating System
Microsoft Edge for Business 81+ (Edge Chromium)	Microsoft Windows 11 Version x 64-bit
Mozilla Firefox ESR 128	
Google Chrome Enterprise 81+	
Apple Mobile Safari	Apple iPad iOS 18.x

Installing Prerequisite Software

Refer to the [Installing Prerequisite Software](#) section in the *Oracle Utilities Work and Asset Management Installation Guide* for detailed instructions on installing the prerequisite software.

Readiness Checklist

The following checklist provides steps to complete to install Oracle Utilities Work and Asset Management.

For more information, refer to the instructions in the *Oracle Utilities Work and Asset Management Installation Guide*.

1. Confirm that the recommended hardware is ready. Refer to [Supported Platforms and Hardware Requirements](#) for more details.
2. Install prerequisite software. Refer to the [Planning the Installation](#) section for more details.
3. Download the Oracle Utilities Work and Asset Management V25.4 components from Oracle Software Delivery Cloud.
4. Go through the [Installation and Configuration Worksheets](#) to understand the configuration menu.
5. Determine the type of installation then follow the guidelines provided for that type:
 - Initial Installation
 - Upgrade Installation
 - Demo Installation
6. Perform post-installation tasks, as applicable.
7. Install optional products, as applicable.

Note: For ESRI integration functionality, you must purchase ESRI ArcGIS Server 10.x software or online cloud subscription from ESRI.

Chapter 4

Installing Oracle Utilities Work and Asset Management - Initial Installation

This chapter provides an overview of installing Oracle Utilities Work and Asset Management V25.4 as a new installation.

Before You Install

Refer to [My Oracle Support](#) for up-to-date additional information on Oracle Utilities Work and Asset Management.

Initial Installation Procedure

The initial installation procedure consists of:

- **Database Component Installation**

Installation of the database component of Oracle Utilities Work and Asset Management must be complete before you can proceed with the following sections.

Refer to **Oracle Utilities Work and Asset Management Database - Initial Installation** of the *Oracle Utilities Work and Asset Management Database Administrator's Guide*, which provides instructions on installing the database component.

- **Application Components Installation**

Refer to **Oracle Utilities Work and Asset Management Database - Initial Installation** of the *Oracle Utilities Work and Asset Management Installation Guide*, which provides instructions on installing the application components.

Chapter 5

Upgrading Oracle Utilities Work and Asset Management

This chapter provides an overview of what is needed to upgrade Oracle Utilities Work and Asset Management, including:

- [Upgrade Paths](#)
- [Before You Upgrade](#)
- [Upgrade Procedure](#)

Upgrade Paths

The following upgrade paths are supported:

- from V2.4.0.1.1 to V25.4

Note: Before you can upgrade you must have a prior version installed. Otherwise, you should follow the procedures described in the [Initial Installation Procedure](#) section of the *Oracle Utilities Work and Asset Management Installation Guide*.

Before You Upgrade

Review the list of operating system, application server and database server combinations that this version of Oracle Utilities Work and Asset Management is certified to operate on, in the [Supported Platforms and Hardware Requirements](#) section.

For further assistance, contact My Oracle Support before you upgrade.

Note: If you are upgrading a previously installed application server, it is recommended that you make a backup before you start the upgrade procedure. The upgrade installation will remove your existing environment including your configurations.

Upgrade Procedure

The upgrade installation procedure consists of:

- **Database Component Upgrade**

Upgrade of the database component of Oracle Utilities Work and Asset Management must be complete before you can proceed with the following sections.

See the **Upgrading the Oracle Utilities Work and Asset Management/ Oracle Utilities Operational Device Management Database** section in the *Oracle Utilities Work and Asset Management Database Administrator's Guide* for instructions on upgrading the database component.

- **Application Components Upgrade**

To proceed with upgrading to Oracle Utilities Work and Asset Management v25.4 follow instructions in the **Upgrading Oracle Utilities Work and Asset Management/ Oracle Utilities Operational Device Management** section in the *Oracle Utilities Work and Asset Management Installation Guide*.

Chapter 6

Installing Oracle Utilities Work and Asset Management - Demo Installation

This chapter provides an overview of the procedure for setting up an application instance of Oracle Utilities Work and Asset Management which can be used for demonstration or training purposes. It includes the following:

- [Before You Install](#)
- [Demo Installation Procedure](#)

Before You Install

Refer to [My Oracle Support](#) for up-to-date additional information on Oracle Utilities Work and Asset Management.

Demo Installation Procedure

The demo installation procedure consists of:

- **Database Component Installation**

Installation of the database component of Oracle Utilities Work and Asset Management must be complete before you can proceed with the following sections.

See the **Installing the Oracle Utilities Work and Asset Management/ Oracle Utilities Operational Device Management Database - Demo Installation** section in the *Oracle Utilities Work and Asset Management Database Administrator's Guide* for instructions on installing the database component with pre-populated demo data.

- **Application Components Installation**

See the **Installing Oracle Utilities Work and Asset Management/ Oracle Utilities Operational Device Management - Demo Installation** section in the *Oracle Utilities Work and Asset Management Installation Guide* for instructions on installing the application components.