

Oracle® Banking Corporate Lending Personally Identifiable Information User Guide



Release 14.7.4.0.0

F97351-01

May 2024

The Oracle logo, consisting of a solid red square with the word "ORACLE" in white, uppercase, sans-serif font centered within it.

ORACLE®

Copyright © 2016, 2024, Oracle and/or its affiliates.

This software and related documentation are provided under a license agreement containing restrictions on use and disclosure and are protected by intellectual property laws. Except as expressly permitted in your license agreement or allowed by law, you may not use, copy, reproduce, translate, broadcast, modify, license, transmit, distribute, exhibit, perform, publish, or display any part, in any form, or by any means. Reverse engineering, disassembly, or decompilation of this software, unless required by law for interoperability, is prohibited.

The information contained herein is subject to change without notice and is not warranted to be error-free. If you find any errors, please report them to us in writing.

If this is software, software documentation, data (as defined in the Federal Acquisition Regulation), or related documentation that is delivered to the U.S. Government or anyone licensing it on behalf of the U.S. Government, then the following notice is applicable:

U.S. GOVERNMENT END USERS: Oracle programs (including any operating system, integrated software, any programs embedded, installed, or activated on delivered hardware, and modifications of such programs) and Oracle computer documentation or other Oracle data delivered to or accessed by U.S. Government end users are "commercial computer software," "commercial computer software documentation," or "limited rights data" pursuant to the applicable Federal Acquisition Regulation and agency-specific supplemental regulations. As such, the use, reproduction, duplication, release, display, disclosure, modification, preparation of derivative works, and/or adaptation of i) Oracle programs (including any operating system, integrated software, any programs embedded, installed, or activated on delivered hardware, and modifications of such programs), ii) Oracle computer documentation and/or iii) other Oracle data, is subject to the rights and limitations specified in the license contained in the applicable contract. The terms governing the U.S. Government's use of Oracle cloud services are defined by the applicable contract for such services. No other rights are granted to the U.S. Government.

This software or hardware is developed for general use in a variety of information management applications. It is not developed or intended for use in any inherently dangerous applications, including applications that may create a risk of personal injury. If you use this software or hardware in dangerous applications, then you shall be responsible to take all appropriate fail-safe, backup, redundancy, and other measures to ensure its safe use. Oracle Corporation and its affiliates disclaim any liability for any damages caused by use of this software or hardware in dangerous applications.

Oracle®, Java, MySQL, and NetSuite are registered trademarks of Oracle and/or its affiliates. Other names may be trademarks of their respective owners.

Intel and Intel Inside are trademarks or registered trademarks of Intel Corporation. All SPARC trademarks are used under license and are trademarks or registered trademarks of SPARC International, Inc. AMD, Epyc, and the AMD logo are trademarks or registered trademarks of Advanced Micro Devices. UNIX is a registered trademark of The Open Group.

This software or hardware and documentation may provide access to or information about content, products, and services from third parties. Oracle Corporation and its affiliates are not responsible for and expressly disclaim all warranties of any kind with respect to third-party content, products, and services unless otherwise set forth in an applicable agreement between you and Oracle. Oracle Corporation and its affiliates will not be responsible for any loss, costs, or damages incurred due to your access to or use of third-party content, products, or services, except as set forth in an applicable agreement between you and Oracle.

Contents

Preface

Introduction	iv
Audience	iv
Conventions	iv
Symbols, Definitions and Abbreviations	v
List Of Topics	v
Related Documents	vi

1 PII Data in Corporate Lending

1.1 Maintaining PII Data	1-1
1.2 User Personal Information	1-2
1.3 Customer Personal Information	1-3

Index

Preface

This topic contains the following sub-topics:

- [Introduction](#)
- [Audience](#)
- [Conventions](#)
- [Symbols, Definitions and Abbreviations](#)
- [List Of Topics](#)
- [Related Documents](#)

Introduction

This document helps you acquaint with the Personally Identifiable Information (PII) data.

Besides this user manual, while maintaining the interface related details, you can invoke the context sensitive help available for each field in OBCL. This help describes the purpose of each field within a screen. You can obtain this information by placing the cursor on the relevant field and striking the <F1> key on the keyboard.

Audience

This manual is intended for the following User/User Roles:

Table 1 Audience

Role	Function
Back office data entry Clerks	Input functions for maintenance related to the interface
End of day operators	Processing during end of day/ beginning of day
Implementation Teams	For setting up integration

Conventions

The following text conventions are used in this document:

Table 2 Conventions and Meaning

Convention	Meaning
boldface	Boldface type indicates graphical user interface elements associated with an action, or terms defined in text or the glossary.





Table 2 (Cont.) Conventions and Meaning

Convention	Meaning
<i>italic</i>	Italic type indicates book titles, emphasis, or placeholder variables for which you supply particular values.
monospace	Monospace type indicates commands within a paragraph, URLs, code in examples, text that appears on the screen, or text that you enter.

Symbols, Definitions and Abbreviations

The following are some of the Symbols you are likely to find in the manual:

Table 3 Symbols

Icons	Functions
	Exit
	Add row
	Delete row
	Option List

The images used in the documentation are of illustration purpose and need to be used only for reference.

For more information, refer to *Accessibility User Manual*.

List Of Topics

This manual is organized into the following topics.

Table 4 List Of Topics

Topics	Description and Cross References
Preface	Preface gives information on the intended audience. It also lists the various topics covered in this user manual.
PII Data in Corporate Lending	PII Data explains about PII data. The topics which are part of PII Data in Corporate Lending are: <ol style="list-style-type: none"> 1. Maintaining PII Data 2. User Personal Information 3. Customer Personal Information

Related Documents

Along with this user manual you may also refer the following related resource:

- *Oracle Banking Corporate Lending Feature Guidance*
- *Common Core - Security Management System User Guide*

1

PII Data in Corporate Lending

Oracle Banking Corporate Lending implements **Privacy By Design** by protecting PII (Personally Identifiable Information) data.

Personally Identifiable Information (PII) is the information that can be used on its own to identify a person. Any information that is used to distinguish one person from another can be a personally identifiable information. It can be any information like name, contact information, demography information, financial information, SSN, Passport number, and so on. Oracle FLEXCUBE allows you to mask, forget or restrict access to personally identifiable information of a user. You can mask or forget the PII based on the maintenance in **Mask Maintenance** and **Forget Customer PII Maintenance** screens.

This topic contains following sub-topics:

- [Maintaining PII Data](#)
- [User Personal Information](#)
- [Customer Personal Information](#)

1.1 Maintaining PII Data

If the data comes under the following categories for an individual user, then it is considered as PII data.

- Customer Name
- Customer Contact Information
- Demographic Information
- Financial Information
- Unique Identifiers

Personal identifiable information captured and processed in OBCL application are listed as below. Privacy and security features are applied on PII information.

Table 1-1 Maintaining PII Data

Function ID	Main Menu	Sub Menu1	Sub Menu2	Description	Summary View	Summary Table
BKDMASTE	Brokerage Maintenance	Master	Detailed	Broker Maintainance Detail	NA	NA
LBDINSTR	Wire/Payment Instructions	Instruction	Detailed	Settlement Instructions Maintenance	NA	NA
LBDNAMNT	LB Maintenance	Named Agent Maintenance		Named Agent Maintenance		
OLDADMIN	LB Maintenance	Administrator	Detailed	Administrator Maintenance		

Table 1-1 (Cont.) Maintaining PII Data

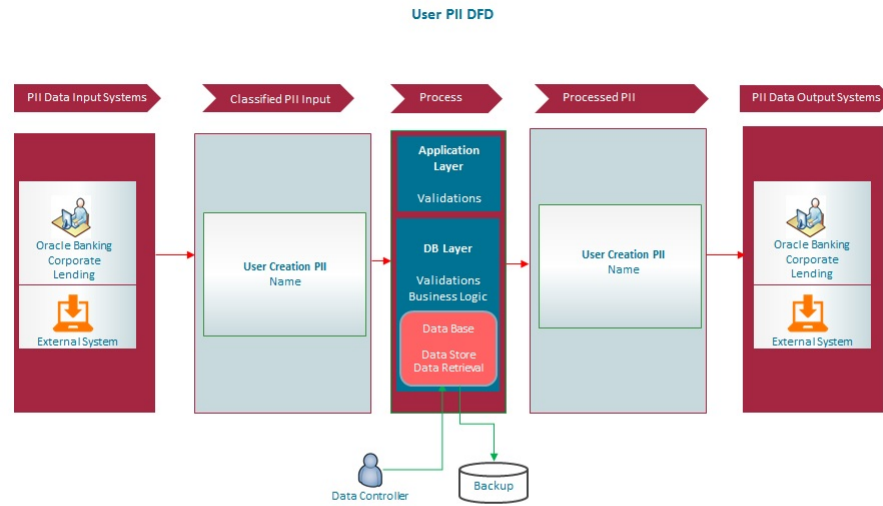
Function ID	Main Menu	Sub Menu1	Sub Menu2	Description	Summary View	Summary Table
OLDADMNT	Messaging Maintenance	Additional Addresses	Detailed	Additional Address Maintenance		
OLDCUENT	Customer Maintenance	Contacts	Detailed	Customer Entity Details		
OLDCUSAD	Customers	Operations	Customer Addresses	Customer Address Maintenance		
OLDCUSMT	Customer Maintenance	Customers	Detailed	Customer Maintenance		
BKSMASTE	Brokerage Maintenance	Master	Summary	Broker Master Summary	BKVW_BRMAS TER	BKTMS_ BRMAS TER
OLSADMNT	Messaging Maintenance	Additional Addresses	Summary	Additional Address Summary	OLVW_ OTHER_ _ADDRESSES	OLTMS_ OTHER_ ADDRESSES
OLSCUSMT	Customer Maintenance	Customers	Summary	Customer Summary	SYVW_ STTM_ CUSTOMER	SYTMS_ STTM_ CUSTOMER

1.2 User Personal Information

Table 1-2 User Personal Information

Personal Information Category	Personal Information Data
User Name	Application User

Figure 1-1 User Personal Information

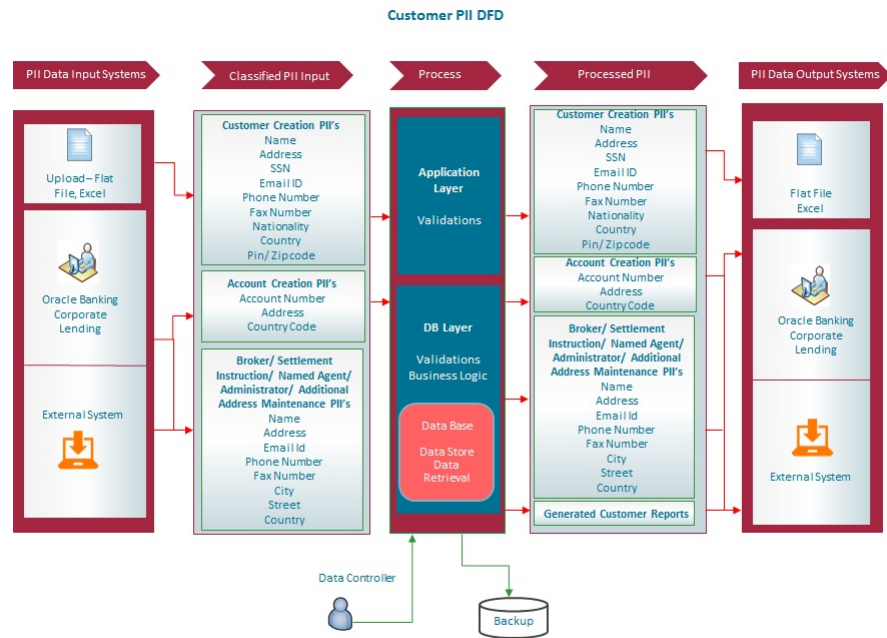


1.3 Customer Personal Information

Table 1-3 Customer Personal Information

Personal Information Category	Personal Information Data
Customer Name	Name (For Administrator, Entity, Legal, Party, Short, Customer)
Customer Contact Information	<ul style="list-style-type: none"> E-mail Address Address Fields (For Customer, Parties,) Street Postal/Zip Code Phone Number Fax Number Phone Number Country
Demography Information	<ul style="list-style-type: none"> City State Country Nationality
Financial Information	Customer Account Name
Unique Identifiers	Social Security Identifier

Figure 1-2 Customer Personal Information



3

Index

B

BKDMASTE, [1-1](#)
BKSMASTE, [1-2](#)

L

LBDINSTR, [1-1](#)
LBDNAMNT, [1-1](#)

O

OLDADMIN, [1-1](#)
OLDADMNT, [1-2](#)
OLDCUENT, [1-2](#)
OLDCUSAD, [1-2](#)
OLDCUSMT, [1-2](#)
OLSADMNT, [1-2](#)
OLSCUSMT, [1-2](#)