

# Oracle® Banking Enterprise Limits and Collateral Management

## Standalone Scheduler Property File Creation



Release 14.8.0.0.0  
G32504-01  
April 2025

ORACLE®

Oracle Banking Enterprise Limits and Collateral Management Standalone Scheduler Property File Creation, Release 14.8.0.0.0

G32504-01

Copyright © 2007, 2025, Oracle and/or its affiliates.

This software and related documentation are provided under a license agreement containing restrictions on use and disclosure and are protected by intellectual property laws. Except as expressly permitted in your license agreement or allowed by law, you may not use, copy, reproduce, translate, broadcast, modify, license, transmit, distribute, exhibit, perform, publish, or display any part, in any form, or by any means. Reverse engineering, disassembly, or decompilation of this software, unless required by law for interoperability, is prohibited.

The information contained herein is subject to change without notice and is not warranted to be error-free. If you find any errors, please report them to us in writing.

If this is software, software documentation, data (as defined in the Federal Acquisition Regulation), or related documentation that is delivered to the U.S. Government or anyone licensing it on behalf of the U.S. Government, then the following notice is applicable:

U.S. GOVERNMENT END USERS: Oracle programs (including any operating system, integrated software, any programs embedded, installed, or activated on delivered hardware, and modifications of such programs) and Oracle computer documentation or other Oracle data delivered to or accessed by U.S. Government end users are "commercial computer software," "commercial computer software documentation," or "limited rights data" pursuant to the applicable Federal Acquisition Regulation and agency-specific supplemental regulations. As such, the use, reproduction, duplication, release, display, disclosure, modification, preparation of derivative works, and/or adaptation of i) Oracle programs (including any operating system, integrated software, any programs embedded, installed, or activated on delivered hardware, and modifications of such programs), ii) Oracle computer documentation and/or iii) other Oracle data, is subject to the rights and limitations specified in the license contained in the applicable contract. The terms governing the U.S. Government's use of Oracle cloud services are defined by the applicable contract for such services. No other rights are granted to the U.S. Government.

This software or hardware is developed for general use in a variety of information management applications. It is not developed or intended for use in any inherently dangerous applications, including applications that may create a risk of personal injury. If you use this software or hardware in dangerous applications, then you shall be responsible to take all appropriate fail-safe, backup, redundancy, and other measures to ensure its safe use. Oracle Corporation and its affiliates disclaim any liability for any damages caused by use of this software or hardware in dangerous applications.

Oracle®, Java, MySQL, and NetSuite are registered trademarks of Oracle and/or its affiliates. Other names may be trademarks of their respective owners.

Intel and Intel Inside are trademarks or registered trademarks of Intel Corporation. All SPARC trademarks are used under license and are trademarks or registered trademarks of SPARC International, Inc. AMD, Epyc, and the AMD logo are trademarks or registered trademarks of Advanced Micro Devices. UNIX is a registered trademark of The Open Group.

This software or hardware and documentation may provide access to or information about content, products, and services from third parties. Oracle Corporation and its affiliates are not responsible for and expressly disclaim all warranties of any kind with respect to third-party content, products, and services unless otherwise set forth in an applicable agreement between you and Oracle. Oracle Corporation and its affiliates will not be responsible for any loss, costs, or damages incurred due to your access to or use of third-party content, products, or services, except as set forth in an applicable agreement between you and Oracle.

# Contents

## 1 Preface

---

1.1	Purpose	1-1
1.2	Audience	1-1
1.3	Documentation Accessibility	1-1
1.4	Conventions	1-1
1.5	Critical Patches	1-2
1.6	Diversity and Inclusion	1-2
1.7	Basic Actions	1-2
1.8	Prerequisite	1-3
1.9	Screenshot Disclaimer	1-3

## 2 Creating Property File for Standalone scheduler

---

2.1	Introduction	2-1
2.2	Create Property File	2-1
2.2.1	Setting General Properties	2-7
2.2.2	Single Sign on	2-8
2.2.3	SMTS Details	2-9
2.2.4	Configuring Scheduler Queues	2-10
2.2.5	Setting EMS FTP/FTPS Properties	2-14
2.2.6	Setting GI Upload Queue	2-16
2.2.7	Setting Report Properties	2-17
2.2.8	Setting ELCM Properties	2-18
2.2.9	Saving Property File	2-18

# 1

## Preface

- [Purpose](#)
- [Audience](#)
- [Documentation Accessibility](#)
- [Conventions](#)
- [Critical Patches](#)
- [Diversity and Inclusion](#)
- [Basic Actions](#)
- [Prerequisite](#)
- [Screenshot Disclaimer](#)

### 1.1 Purpose

This guide is designed to help the user to quickly get acquainted with the Customer Standard Instructions maintenance process.

### 1.2 Audience

This guide is intended for the central administrator of the Bank who controls the system and application parameters and ensures smooth functionality and flexibility of the banking application.

### 1.3 Documentation Accessibility

For information about Oracle's commitment to accessibility, visit the Oracle Accessibility Program website at <https://www.oracle.com/corporate/accessibility/>.

#### Access to Oracle Support

Oracle customer access to and use of Oracle support services will be pursuant to the terms and conditions specified in their Oracle order for the applicable services.

### 1.4 Conventions

The following text conventions are used in this document:

**Table 1-1 Conventions**

Convention	Meaning
<b>boldface</b>	Boldface type indicates graphical user interface elements associated with an action, or terms defined in text or the glossary.

Table 1-1 (Cont.) Conventions

Convention	Meaning
<i>italic</i>	Italic type indicates book titles, emphasis, or placeholder variables for which you supply particular values.
<code>monospace</code>	Monospace type indicates commands within a paragraph, URLs, code in examples, text that appears on the screen, or text that you enter.

## 1.5 Critical Patches

Oracle advises customers to get all their security vulnerability information from the Oracle Critical Patch Update Advisory, which is available at [Critical Patches](#), [Security Alerts and Bulletins](#). All critical patches should be applied in a timely manner to ensure effective security, as strongly recommended by [Oracle Software Security Assurance](#).

## 1.6 Diversity and Inclusion

Oracle is fully committed to diversity and inclusion. Oracle respects and values having a diverse workforce that increases thought leadership and innovation. As part of our initiative to build a more inclusive culture that positively impacts our employees, customers, and partners, we are working to remove insensitive terms from our products and documentation. We are also mindful of the necessity to maintain compatibility with our customers' existing technologies and the need to ensure continuity of service as Oracle's offerings and industry standards evolve. Because of these technical constraints, our effort to remove insensitive terms is ongoing and will take time and external cooperation.

## 1.7 Basic Actions

Table 1-2 Basic Actions

Action	Description
<b>Approve</b>	Used to approve the initiated report. This button is displayed, once the user click <b>Authorize</b> .
<b>Audit</b>	Used to view the maker details, checker details, and report status.
<b>Authorize</b>	Used to authorize the report created. A maker of the screen is not allowed to authorize the report. Only a checker can authorize a report, created by a maker.
<b>Close</b>	Used to close a record. This action is available only when a record is created.
<b>Confirm</b>	Used to confirm the performed action.
<b>Cancel</b>	Used to cancel the performed action.
<b>Compare</b>	Used to view the comparison through the field values of old record and the current record. This button is displayed in the widget, once the user click <b>Authorize</b> .
<b>Collapse All</b>	Used to hide the details in the sections. This button is displayed, once the user click <b>Compare</b> .
<b>Expand All</b>	Used to expand and view all the details in the sections. This button is displayed, once the user click <b>Compare</b> .

Table 1-2 (Cont.) Basic Actions

Action	Description
<b>New</b>	Used to add a new record. When the user click <b>New</b> , the system displays a new record enabling to specify the required data.
<b>OK</b>	Used to confirm the details in the screen.
<b>Save</b>	Used to save the details entered or selected in the screen.
<b>View</b>	Used to view the report details in a particular modification stage. This button is displayed in the widget, once the user click <b>Authorize</b> .
<b>View Difference only</b>	Used to view a comparison through the field element values of old record and the current record, which has undergone changes. This button is displayed, once the user click <b>Compare</b> .
<b>Unlock</b>	Used to update the details of an existing record. System displays an existing record in editable mode.

## 1.8 Prerequisite

Specify the **User ID** and **Password**, and login to **Home** screen.

## 1.9 Screenshot Disclaimer

Personal information used in the interface or documents is dummy and does not exist in the real world. It is only for reference purposes.

# 2

## Creating Property File for Standalone scheduler

- [Introduction](#)  
This topic explains the steps to create a property file for Standalone Scheduler.
- [Create Property File](#)  
This topic explains systematic instructions to create the property file for Oracle FLEXCUBE Universal Banking.

### 2.1 Introduction

This topic explains the steps to create a property file for Standalone Scheduler.

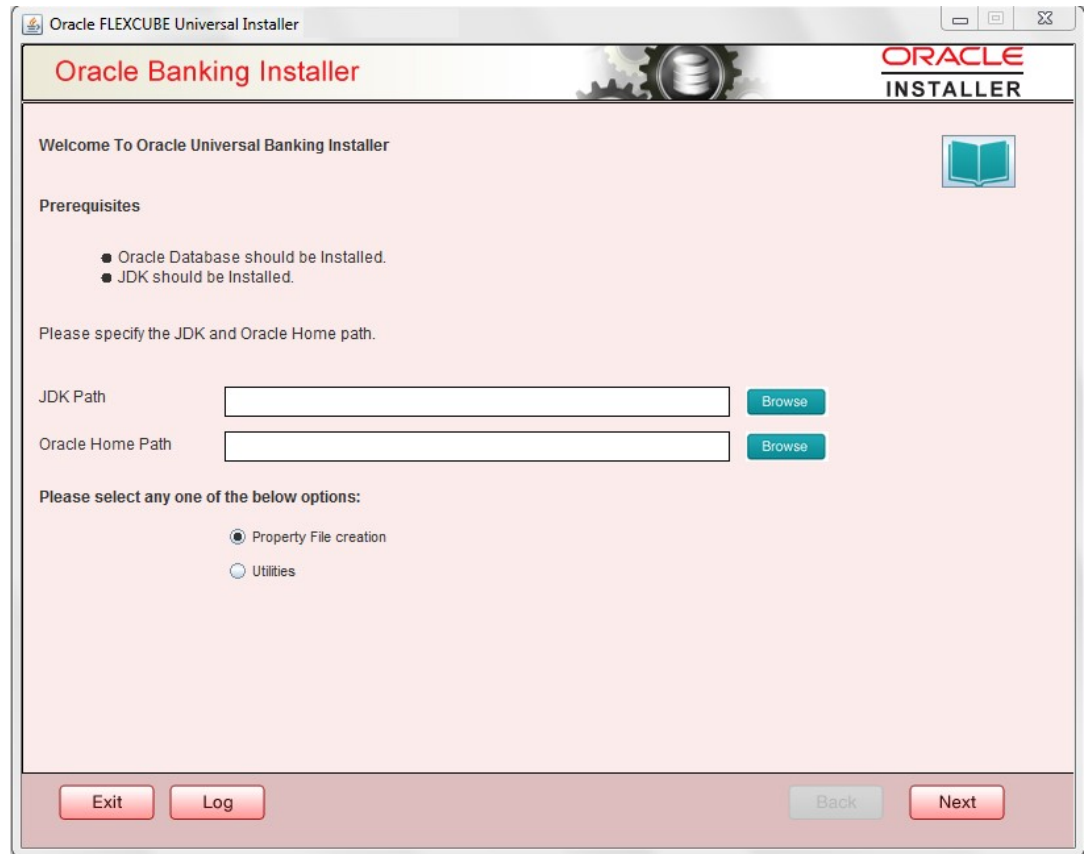
### 2.2 Create Property File

This topic explains systematic instructions to create the property file for Oracle FLEXCUBE Universal Banking.

1. Launch Oracle FLEXCUBE Universal Banking Solution Installer.

The **Welcome To Oracle FLEXCUBE Universal Banking Installer** screen displays.

**Figure 2-1 Welcome To Oracle FLEXCUBE Universal Banking Installer**



2. Specify JDK and Oracle Home path, select the **Property File Creation** option and click **Next**.

The **Select One of the Component** screen displays.



**Figure 2-2 Select One of the Component**

Oracle FLEXCUBE Universal Installer 12.5.0.0.0

**Oracle Banking Installer** ORACLE INSTALLER

**Select one of the Components**

Load Existing Property File

☐ INFRA ☒ Scheduler ☐ Gateway ☐ Switch Interface Installation

**Select Oracle Product Processors**

☐ Oracle FLEXCUBE Universal Banking

☐ Oracle FLEXCUBE Enterprise Limits and Collateral Management (CO-DEPLOY)

☐ Oracle Banking Payments

☐ Oracle Banking Corporate Lending ☐ Open Development Tool

☐ Oracle Banking Treasury ☐ Oracle FLEXCUBE Universal Banking for JAPAN

☐ Oracle Banking Trade Finance

**Select Plugins to be Installed**

Host Address   ☐ Origination ☐ Scheduler

☐ Reports   ☐ SIANET Adapter

☐ DMS   ☐ Insulation ☐ External Adapter required

3. Select the **Scheduler** component, and appropriate plugin if needed, and then click **Next**. The **Provide Environment Details** screen displays.

**Figure 2-3 Environment Details**

Oracle FLEXCUBE Universal Installer 12.5.0.0.0

**Oracle Banking Installer** **ORACLE INSTALLER**

**Provide Environment details.**

EAR Name:

Context Name:

File Separator Style:

Application Server:

☐ OBMA PP Installed

Application Server Path:

Source Path:

Ear Destination Path:

Cookie-Name (JSESSION\_ID):

4. Specify **EAR Name**, **Context Name**, **Application Server Path**, **Source Path**, and **EAR Destination path** fields.
5. Select **File Separator Style** and **Application Server** from the drop-down list.
6. Click **Next**.

The **Property File Creation** screen displays.

**Figure 2-4 Property File Creation**

Oracle FLEXCUBE Universal Installer 12.5.0.0.0

Oracle Banking Installer

ORACLE  
INSTALLER

Property File Creation

Release: KERNEL

Hashing Algorithm Iteration Count: 10000

Security Key for Encryption Logic: oraclefinancials

Exit Log Back Next

7. On the **Property File Creation** screen, specify the details.

**Table 2-1 Property File Creation - Field Description**

Field	Description
<b>Release</b>	Select the release from the adjoining drop-down list.
<b>Hashing Algorithm Iteration Count</b>	This should be entered which will be used for encryption.
<b>Security Key for Encryption Logic</b>	This should be entered which will be used for encryption.

8. Click **Next**.

The **Property File Creation - DataSource** screen displays.

**Figure 2-5 Property File Creation - DataSource**

Oracle FLEXCUBE Universal Installer 12.5.0.0.0

**Oracle Banking Installer** **ORACLE INSTALLER**

**Property File Creation - DataSource**

Please enter DataSource Names

SMS Data Source

Scheduler Data Source

PM Online JNDI

PM Batch JNDI

Webservices Provider URL

Host Server URL

Standalone Scheduler URL

Exit Log Back Next

9. Enter the JNDI value for the datasources enabled and click **Next**.
  - [Setting General Properties](#)  
This topic describes the process of setting common properties of Standalone Installer.
  - [Single Sign on](#)
  - [SMTPS Details](#)  
This topic explains the steps to enable SMTPS mail configuration for Scheduler.
  - [Configuring Scheduler Queues](#)  
This topic explains systematic instructions to configure scheduler queues.
  - [Setting EMS FTP/FTPS Properties](#)  
This topic explains systematic instructions to set EMS FTP/FTPS properties.
  - [Setting GI Upload Queue](#)  
This topic explains systematic instructions to set the GI upload queue.
  - [Setting Report Properties](#)  
This topic explains systematic instructions to set report properties.
  - [Setting ELCM Properties](#)  
This topic explains systematic instructions to set the ELCM properties.
  - [Saving Property File](#)  
This topic explains systematic instructions to save the property file after completing all the required settings.

## 2.2.1 Setting General Properties

This topic describes the process of setting common properties of Standalone Installer.

1. The installer displays the General Properties screen.

The **Property File Creation- General Property** screen displays.

**Figure 2-6 Property File Creation - General Property**

2. Specify the **Property File Creation- General Property** screen details.

**Table 2-2 Property File Creation-General property**

Field	Description
<b>Debug Logs Required</b>	If you require to debug option, select <b>Yes</b> from the drop-down list. If you do not require to debug option, select <b>No</b>
<b>Work Area</b>	Specify the work area. For example, <i>D:\BrnDbgs\</i>
<b>Signature Path</b>	Specify the location at which the signature images are placed.
<b>Excel Path</b>	Specify the location at which the excel files are generated.

Table 2-2 (Cont.) Property File Creation-General property

Field	Description
<b>Request Time Out</b>	Specify the database request timeout value in milliseconds. This is the maximum number of seconds the database waits for a query to return the result.
<b>Connection Time Out</b>	Specify the database connection timeout value in seconds. This is the maximum number of seconds the application waits for a connection to the database to open.
<b>Session Time Out</b>	Enter the session time-out value in seconds. This is the maximum number of seconds during which the application gets active without any user intervention. If there is no user intervention continuously for the duration specified here, the user session gets expired.
<b>LOV Fetch Required</b>	If you check this box, the option lists in Oracle FLEXCUBE display the matching values based on the first characters that you enter in a field. If you specify the first three characters of a value to be entered in an option list and tab out, the system displays the complete list of values that are matching the first three characters. If you do not check this, option lists do not show the matching values based on the first few characters. You need to specify the complete value against the field.
<b>CSS style</b>	Select <b>Default</b> or <b>Custom</b> from the drop-down. By default, the CSS Style name will be <b>FLEXCUBE</b> .
<b>Language</b>	Select language from the drop-down. Version and Copyright are other general properties.

3. Click **Next** once all the property details are entered.

## 2.2.2 Single Sign on

On the **Property File Creation - Single Sign on** screen, only the **Platform Security** option will be enabled for the scheduler, select the option if needed. The **SMS Security Key** field is used to capture the security key value if the **Platform Security** check box is checked.

Figure 2-7 Property File Creation - Single Sign on

Oracle FLEXCUBE Universal Installer 12.5.0.0.0

Oracle Banking Installer ORACLE INSTALLER

Property File Creation - Single Sign on

SSO Required ☒ SSO Type: DEFAULT (dropdown menu with options: DEFAULT, TOKEN, SAML, IDCS\_TOKEN)

SSO KEY: DN

Authentication details maintained external to FLEXCUBE

External Password Required ☐ Authentication Type

External User Login Required ☐

☒ Platform Security SMS Security Key: oraclefinancials

Option to provide LDAP server details

No.	Name	Value
1	LDAP SERVER URL	LDAP://10.10.10.10:111
2	LDAP SSL ENABLED	<input type="checkbox"/>
3	SECURITY AUTHENTICATION TYPE	Simple
4	DOMAIN NAME	flexcube.com
5	LDAP SERVER TIMEOUT	0

Option to provide SAML details

No.	Name	Value
1	SAML CERTIFICATE PATH	D:\Security\SAML_Implementation\TestFiles\certcertstore\b...
2	SAML CERTIFICATE PASSWORD	*****
3	SAML CERTIFICATE ALIAS	barc
4	SAML VALID AUDIENCE	bPAID_BWSIT

Exit Log Back Next

## 2.2.3 SMTPS Details

This topic explains the steps to enable SMTPS mail configuration for Scheduler.

The SMTPS mail configuration is enabled for the scheduler.

- On the **Property File Creation - SMTPS/DMS** screen, specify the details.

Figure 2-8 Property File Creation - SMTPS/DMS

Oracle FLEXCUBE Universal Installer 12.5.0.0.0

**Oracle Banking Installer** ORACLE INSTALLER

**Property File Creation - SMTPS/DMS**

Option for Mail configuring using SMTPS Protocol

No.	Name	Value
1	Host	samplename.mail.com
2	User Id	infra
3	User Password	*****
4	JNDI Name	mail/FCUBSMail

Option for modifying the DMS/IPM property values

No.	Name	Value
1	Login Service Address	http://10.10.10.10:1010/imaging/ws/LoginService
2	Document Service Address	http://10.10.10.10:1010/imaging/ws/DocumentService
3	Document Content Service Address	http://10.10.10.10:1010/imaging/ws/DocumentContentService
4	IPM User Name	testuser
5	IPM Password	*****

Exit Log Back Next

Table 2-3 Property File Creation - SMTPS/DMS

Field	Description
Host	Specify the SMTP host name.
User ID	Specify the user ID.
User Password	Specify the user password.
JNDI Name	Specify the JNDI name.

## 2.2.4 Configuring Scheduler Queues

This topic explains systematic instructions to configure scheduler queues.

1. On the **Property File Creation - Scheduler Queues** screen, specify the details.




Figure 2-9 Property File Creation - Scheduler Queues


Table 2-4 Property File Creation - Scheduler Queues

Field	Description
<b>Notify Destination</b>	Specify the notify destination. Select one of the following options: <ul style="list-style-type: none"> <li><b>QUEUE</b></li> <li><b>TOPIC</b></li> </ul>
<b>Queue Name</b>	Set <b>NOTIFY_DEST_QUEUE</b> as the destination queue name.
<b>Queue Connection Factory</b>	Set <b>NotifyDestQCF</b> as the queue connection factory.
<b>Secure</b>	Check this box to indicate that it is a secured queue connection factory. If you check this box, the caller ID and caller password will be enabled.
<b>Caller ID</b>	Specify the caller ID for the secured queue connection factory.
<b>Caller Password</b>	Specify the password for the caller ID to access the secured queue connection factory. If the queue connection factory is not secured, if you have not checked the box <b>Secure</b> , the installer will not display the fields <b>Caller ID</b> and <b>Caller Password</b> . You need not provide these details in that case.

Table 2-4 (Cont.) Property File Creation - Scheduler Queues

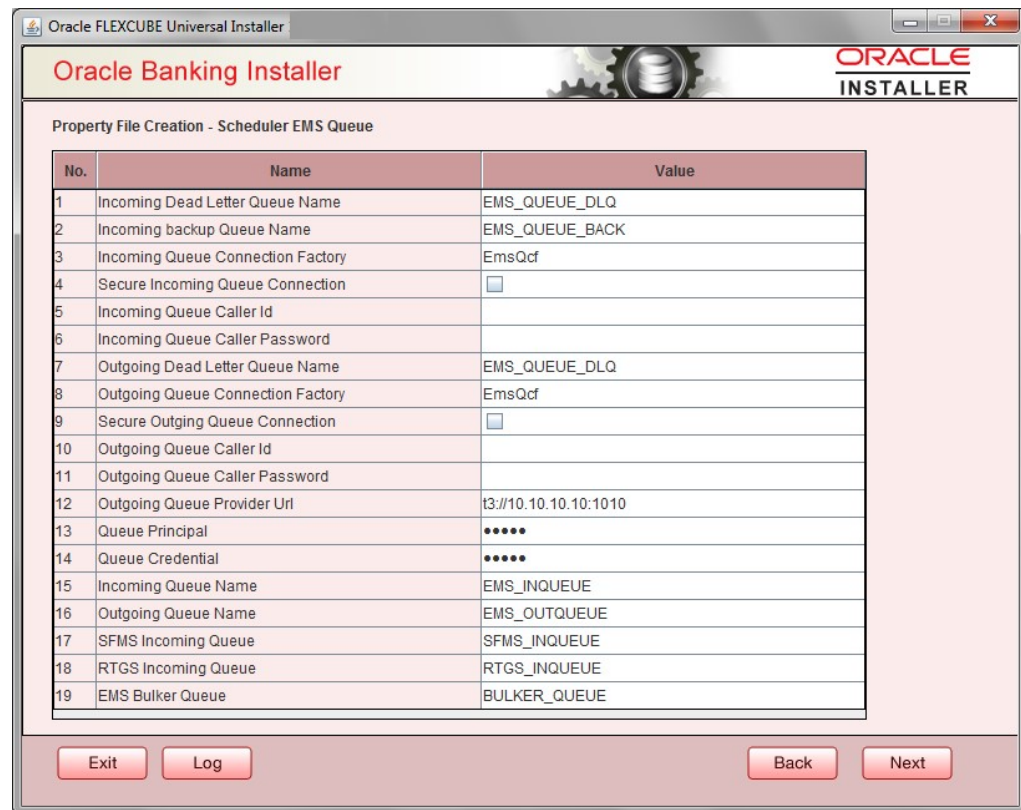
Field	Description
<b>Notify Queue Location</b>	<p>Specify the notify queue location. Select one of the following options:</p> <ul style="list-style-type: none"> <li>• <b>Internal</b></li> <li>• <b>External</b></li> </ul> <p>For the Oracle WebLogic application server, the notify queue location should be selected as <b>Internal</b>. If you choose <b>External</b> following details for the external queue will be enabled.</p>
<b>Provider URL</b>	<p>Specify the provide URL (iiop://localhost:1010).</p> <div>  <b>Note:</b> 1010 is the default IIOP port. </div> <p>Refer to the table <a href="#">#unique_33/unique_33_Connect_42_TABLE_CBS_V5C_NXB</a></p>
<b>Security Principal</b>	Specify the login ID to access the application server.
<b>Security Credentials</b>	Specify the password to access the application server. Click <b>Next</b> to proceed with the scheduler configuration.
<b>Notify Deferred Queue Name</b>	Set <b>DEFERRED_DEST_QUEUE</b> as the notify differed queue name.
<b>Deferred Queue Connection Factory</b>	Set <b>DeferredDestQcf</b> as the deferred queue connection factory.
<b>Secure</b>	Check this box to indicate that it is a secured deferred queue connection factory. If you check this box, caller ID and caller password will be enabled. Specify the caller ID and caller password for the secured deferred queue connection factory.
<b>Notify Queue Name</b>	Set <b>NOTIFY_QUEUE</b> as the notify queue name.
<b>Dead Letter Queue Name</b>	Set <b>NOTIFY_QUEUE_DLQ</b> as the dead letter queue name.
<b>Notify Queue Connection Factory</b>	Set <b>NOTIFY_MDB_QCF</b> as the notify queue connection factory.
<b>Secure</b>	Check this box to indicate that it is secured notify internal Queue. If you check this box, caller ID and caller password will be enabled. Specify the caller ID and caller password for the secured notify queue connection factory.

**Table 2-5 Oracle WebLogic Application Server**

Application Server	EMS Out Initial Context Factory
Oracle WebLogic	t3://<ip_address>:port For example, t3://10.10.10.10:1010 <div>  <b>Note:</b>  Here, 10.10.10.10 represents the local host and 1010 to the target server default port (AdminServer/ ManagedServer). </div>

- Click **Next**.

The **Property File Creation - Scheduler EMS Queue** screen displays.

**Figure 2-10 Property File Creation - Scheduler EMS Queue**


No.	Name	Value
1	Incoming Dead Letter Queue Name	EMS_QUEUE_DLQ
2	Incoming backup Queue Name	EMS_QUEUE_BACK
3	Incoming Queue Connection Factory	EmsQcf
4	Secure Incoming Queue Connection	<input type="checkbox"/>
5	Incoming Queue Caller Id	
6	Incoming Queue Caller Password	
7	Outgoing Dead Letter Queue Name	EMS_QUEUE_DLQ
8	Outgoing Queue Connection Factory	EmsQcf
9	Secure Outgoing Queue Connection	<input type="checkbox"/>
10	Outgoing Queue Caller Id	
11	Outgoing Queue Caller Password	
12	Outgoing Queue Provider Url	t3://10.10.10.10:1010
13	Queue Principal	*****
14	Queue Credential	*****
15	Incoming Queue Name	EMS_INQUEUE
16	Outgoing Queue Name	EMS_OUTQUEUE
17	SFMS Incoming Queue	SFMS_INQUEUE
18	RTGS Incoming Queue	RTGS_INQUEUE
19	EMS Bulker Queue	BULKER_QUEUE

- On the **Property File Creation - Scheduler EMS Queue** screen, specify the details.

Table 2-6 Property File Creation - Scheduler EMS Queue

Field	Description
Incoming Dead Letter Queue Name	Set <b>EMS_QUEUE_DLQ</b> as the incoming dead letter queue name.
Incoming Backup Queue Name	Set <b>EMS_QUEUE_BACK</b> as the incoming backup queue name.
Incoming Queue Connection Factory	Set <b>EmsQcf</b> as the incoming queue connection factory.
Secure Incoming Queue Connection	Check this box to indicate that it is a secured queue connection.
Incoming Queue Caller ID	Specify the caller ID for the secured queue connection.
Incoming Queue Caller Password	Specify the caller password for the secured queue connection.
Outgoing Dead Letter Queue Name	Set <b>EMS_QUEUE_DLQ</b> as the outgoing dead letter queue name.
Outgoing Queue Connection Factory	Set <b>EmsQcf</b> as the outgoing queue connection factory.
Secure Outgoing Queue Connection	Check this box to indicate that it is a secured outgoing queue connection.
Outgoing Queue Caller ID	Specify the caller ID for the secured queue connection.
Outgoing Queue Caller Password	Specify the caller Password for the secured queue connection.
Outgoing Queue Provider URL	Specify the URL of the outgoing queue.
Queue Principal	Specify the queue principal.
Queue Credential	Specify the queue credential.
Incoming Queue Name	Specify the incoming queue name.
Outgoing Queue Name	Specify the outgoing queue name.
SFMS Incoming Queue	Specify the SFMS Incoming Queue.
RTGS Incoming Queue	Specify the RTGS incoming Queue.
EMS Bulker Queue	Specify the EMS Bulker Queue.

- Once the above details are specified , click **Next**.

## 2.2.5 Setting EMS FTP/FTPS Properties

This topic explains systematic instructions to set EMS FTP/FTPS properties.

- On the **Property File Creation - EMS FTP/FTPS** screen, specify the details.

Figure 2-11 Property File Creation - EMS FTP/FTPS

Oracle FLEXCUBE Universal Installer

**Oracle Banking Installer**

Property file Creation - EMS FTP/FTPS  
Option for Scheduler EMS FTP/FTPS configuring.

No.	Name	Value
1	File TranferMode FTPS	FTPS
2	Server	10.10.10.10
3	User id	OFSS
4	Password	*****
5	File Type	.txt
6	Swift Format	1
7	Swift Message Delimiter	<input checked="" type="checkbox"/>
8	Swift Message Terminator	<input checked="" type="checkbox"/>
9	MEDIA	SWIFT

Option for EMS -Structured Financial Messaging System configuration

No.	Name	Value
1	Signature Block	<input checked="" type="checkbox"/>
2	Keystore File Name	/keystore
3	Keystore Alias name	*****
4	Keystore Password	*****

Exit Log Back Next

Table 2-7 Property File Creation - EMS FTP/FTPS

Field	Description
<b>File Transfer Mode FTPS</b>	Specify the mode of transferring files to EMS. Select one of the following: <ul style="list-style-type: none"> <li>• <b>FTPS</b></li> <li>• <b>SFTP</b></li> <li>• <b>HTTP</b></li> </ul>
<b>Server</b>	Specify the server IP address for the selected file transfer mode.
<b>User ID</b>	Specify the user ID to access the server of the file transfer mode.
<b>Password</b>	Specify the password for the above user ID.
<b>File Type</b>	Specify the type of file that is transferred. By default, the installer sets it as <b>.txt</b> .
<b>SWIFT Message Delimiter</b>	Select the check box if needed.
<b>SWIFT Message Terminator</b>	Select the check box if needed.
<b>Media</b>	Specify the Media.
<b>Signature Block</b>	Check this box to enable the signature block.
<b>Keystore File Name</b>	Specify the Keystore file name.
<b>Keystore Alias Name</b>	Specify the Keystore alias name.
<b>Keystore Password</b>	Specify the Keystore password.

2. Once the above details are specified, click **Next**.  
The system displays the next screen.

## 2.2.6 Setting GI Upload Queue

This topic explains systematic instructions to set the GI upload queue.

1. On the **Property File Creation - Scheduler GI Upload Queue** screen, specify the details.

**Figure 2-12** Property File Creation - Scheduler GI Upload Queue

Oracle FLEXCUBE Universal Installer 12.5.0.0.0

**Oracle Banking Installer** ORACLE INSTALLER

**Property File Creation - Scheduler GI Upload Queue**  
Option for configuring details for Scheduler GI Upload Queue

Queue Name: INTERNAL\_GI\_UPLOAD\_QUEUE

Dead Letter Queue Name: INTERNAL\_GI\_UPLOAD\_DLQ

Queue connection factory: GI\_UPLOAD\_QCF

☐ Secure    Caller ID:    Caller Password:

Exit Log Back Next

**Table 2-8** Property File Creation - Scheduler GI Upload Queue

Field	Description
Queue Name	Specify the queue name as <b>INTERNAL_GI_UPLOAD_QUEUE</b> .
Dead Letter Queue Name	Specify the dead letter queue name as <b>INTERNAL_GI_UPLOAD_DLQ</b> .
Queue Connection Factory	Specify the queue connection factory as <b>GI_UPLOAD_QCF</b> .
Secure	Check this box to indicate that it is a secured deferred queue connection factory.
Caller ID and Caller Password	Specify the caller ID and caller password for the secured queue connection factory.

2. Once the above details are specified, click **Next**.

The system displays the next screen.

## 2.2.7 Setting Report Properties

This topic explains systematic instructions to set report properties.

1. On the **Property File Creation - Reports** screen, specify the details.

**Figure 2-13** Property File Creation - Reports

No.	Name	Value
1	Server End Point	http://10.10.10.1010/xmlpserver/services/v2/ReportService?wsdl
2	Name Space	http://xmlns.oracle.com/oxp/service/PublicReportService
3	User Name	Administrator
4	Password	*****
5	Time Zone	IST

**Table 2-9** Property File Creation - Reports

Field	Description
Server End Point	Specify the BIP endpoint. <i>http://whf00blq:9502/xmlpserver/services/v2/ReportService?wsdl</i> However, you need to change the IP and port where the application is installed. WSDL URL gets modified based on the Server Version.
Name Space	Specify the name space. By default, the installer displays <i>http://xmlns.oracle.com/oxp/service/PublicReportService</i> .
User Name	Specify the user name. By default, the installer displays <b>Administrator</b> .

**Table 2-9 (Cont.) Property File Creation - Reports**

Field	Description
<b>Password</b>	Specify the password for the user name. By default, the installer sets it as <b>Administrator</b> .
<b>Time Zone</b>	Specify the time zone of the server.

2. Once the above details are specified , click **Next**.  
The system displays the next screen.

## 2.2.8 Setting ELCM Properties

This topic explains systematic instructions to set the ELCM properties.

1. If you have selected **ELCM Required** option, then set the ELCM properties.

**Figure 2-14 Property File Creation**

2. On the **Property File Creation** screen, specify the fields.

**Table 2-10 Property File Creation**

Field	Description
<b>ELCM Application Name</b>	Specify the ELCM application Name.
<b>Provide URL</b>	Specify the provide URL.
<b>Security Principal</b>	Specify the login ID to access the application server.
<b>Security Credentials</b>	Specify the password to access the application server.

3. On specifying the details, click **Next**.  
The system displays the next screen.

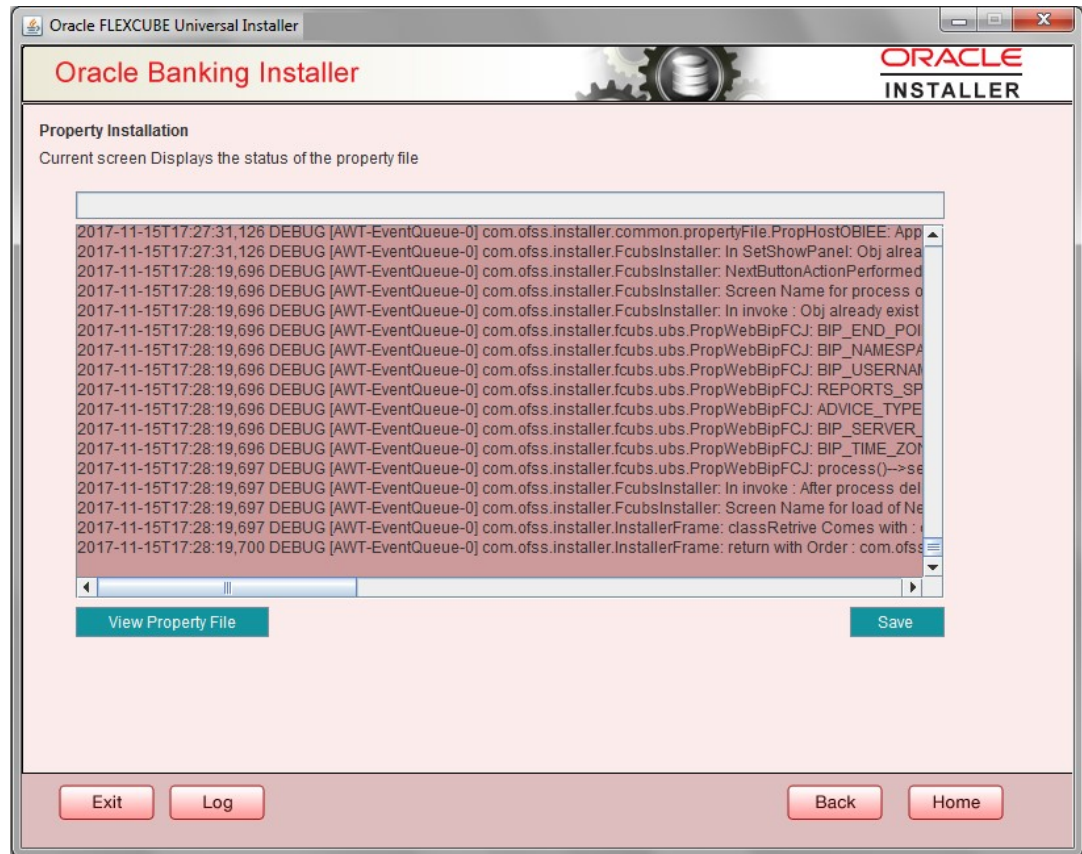
## 2.2.9 Saving Property File

This topic explains systematic instructions to save the property file after completing all the required settings.

1. After completing all the required settings explained above, save the property file.

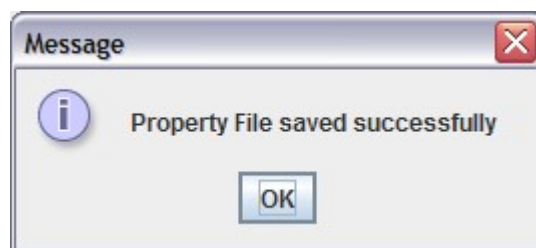


Figure 2-15 Property Installation



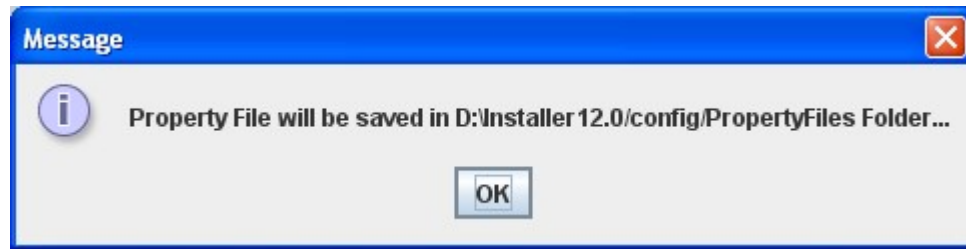
2. View the status of property file creation on the above screen.  
Once the file is saved, the installer displays the pop-up message.

Figure 2-16 Message



Two property files **fcubs.properties** and **scheduler.properties** are saved. If you do not use **Save** or **Save As** options, the installer saves the properties file in the `<InstallerSources>\config\PropertyFiles` folder. In that case, the following message displays.

**Figure 2-17 Message**



This completes the properties file creation.