

# Oracle® Banking Enterprise Limits and Collateral Management User Creation Utility



Release 14.8.0.0.0  
G32509-01  
April 2025

ORACLE®



Copyright © 2007, 2025, Oracle and/or its affiliates.

This software and related documentation are provided under a license agreement containing restrictions on use and disclosure and are protected by intellectual property laws. Except as expressly permitted in your license agreement or allowed by law, you may not use, copy, reproduce, translate, broadcast, modify, license, transmit, distribute, exhibit, perform, publish, or display any part, in any form, or by any means. Reverse engineering, disassembly, or decompilation of this software, unless required by law for interoperability, is prohibited.

The information contained herein is subject to change without notice and is not warranted to be error-free. If you find any errors, please report them to us in writing.

If this is software, software documentation, data (as defined in the Federal Acquisition Regulation), or related documentation that is delivered to the U.S. Government or anyone licensing it on behalf of the U.S. Government, then the following notice is applicable:

U.S. GOVERNMENT END USERS: Oracle programs (including any operating system, integrated software, any programs embedded, installed, or activated on delivered hardware, and modifications of such programs) and Oracle computer documentation or other Oracle data delivered to or accessed by U.S. Government end users are "commercial computer software," "commercial computer software documentation," or "limited rights data" pursuant to the applicable Federal Acquisition Regulation and agency-specific supplemental regulations. As such, the use, reproduction, duplication, release, display, disclosure, modification, preparation of derivative works, and/or adaptation of i) Oracle programs (including any operating system, integrated software, any programs embedded, installed, or activated on delivered hardware, and modifications of such programs), ii) Oracle computer documentation and/or iii) other Oracle data, is subject to the rights and limitations specified in the license contained in the applicable contract. The terms governing the U.S. Government's use of Oracle cloud services are defined by the applicable contract for such services. No other rights are granted to the U.S. Government.

This software or hardware is developed for general use in a variety of information management applications. It is not developed or intended for use in any inherently dangerous applications, including applications that may create a risk of personal injury. If you use this software or hardware in dangerous applications, then you shall be responsible to take all appropriate fail-safe, backup, redundancy, and other measures to ensure its safe use. Oracle Corporation and its affiliates disclaim any liability for any damages caused by use of this software or hardware in dangerous applications.

Oracle®, Java, MySQL, and NetSuite are registered trademarks of Oracle and/or its affiliates. Other names may be trademarks of their respective owners.

Intel and Intel Inside are trademarks or registered trademarks of Intel Corporation. All SPARC trademarks are used under license and are trademarks or registered trademarks of SPARC International, Inc. AMD, Epyc, and the AMD logo are trademarks or registered trademarks of Advanced Micro Devices. UNIX is a registered trademark of The Open Group.

This software or hardware and documentation may provide access to or information about content, products, and services from third parties. Oracle Corporation and its affiliates are not responsible for and expressly disclaim all warranties of any kind with respect to third-party content, products, and services unless otherwise set forth in an applicable agreement between you and Oracle. Oracle Corporation and its affiliates will not be responsible for any loss, costs, or damages incurred due to your access to or use of third-party content, products, or services, except as set forth in an applicable agreement between you and Oracle.



# Contents

|     |                             |     |
|-----|-----------------------------|-----|
| 1   | Preface                     |     |
| 1.1 | Purpose                     | 1-1 |
| 1.2 | Audience                    | 1-1 |
| 1.3 | Documentation Accessibility | 1-1 |
| 1.4 | Conventions                 | 1-1 |
| 1.5 | Critical Patches            | 1-2 |
| 1.6 | Diversity and Inclusion     | 1-2 |
| 1.7 | Basic Actions               | 1-2 |
| 1.8 | Screenshot Disclaimer       | 1-3 |
| 2   | Introduction                |     |
| 3   | Build Application for Setup |     |



# 1

## Preface

- [Purpose](#)
- [Audience](#)
- [Documentation Accessibility](#)
- [Conventions](#)
- [Critical Patches](#)
- [Diversity and Inclusion](#)
- [Basic Actions](#)
- [Screenshot Disclaimer](#)

### 1.1 Purpose

This guide is designed to help the user to quickly get acquainted with the Customer Standard Instructions maintenance process.

### 1.2 Audience

This guide is intended for the central administrator of the Bank who controls the system and application parameters and ensures smooth functionality and flexibility of the banking application.

### 1.3 Documentation Accessibility

For information about Oracle's commitment to accessibility, visit the Oracle Accessibility Program website at <https://www.oracle.com/corporate/accessibility/>.

#### Access to Oracle Support

Oracle customer access to and use of Oracle support services will be pursuant to the terms and conditions specified in their Oracle order for the applicable services.

### 1.4 Conventions

The following text conventions are used in this document:

**Table 1-1 Conventions**

| Convention      | Meaning  |
|-----------------|--|
| <b>boldface</b> | Boldface type indicates graphical user interface elements associated with an action, or terms defined in text or the glossary. |
| <i>italic</i>   | Italic type indicates book titles, emphasis, or placeholder variables for which you supply particular values.                  |



Table 1-1 (Cont.) Conventions

| Convention | Meaning  |
|------------|--|
| monospace  | Monospace type indicates commands within a paragraph, URLs, code in examples, text that appears on the screen, or text that you enter. |

## 1.5 Critical Patches

Oracle advises customers to get all their security vulnerability information from the Oracle Critical Patch Update Advisory, which is available at [Critical Patches](#), [Security Alerts and Bulletins](#). All critical patches should be applied in a timely manner to ensure effective security, as strongly recommended by [Oracle Software Security Assurance](#).

## 1.6 Diversity and Inclusion

Oracle is fully committed to diversity and inclusion. Oracle respects and values having a diverse workforce that increases thought leadership and innovation. As part of our initiative to build a more inclusive culture that positively impacts our employees, customers, and partners, we are working to remove insensitive terms from our products and documentation. We are also mindful of the necessity to maintain compatibility with our customers' existing technologies and the need to ensure continuity of service as Oracle's offerings and industry standards evolve. Because of these technical constraints, our effort to remove insensitive terms is ongoing and will take time and external cooperation.

## 1.7 Basic Actions

Table 1-2 Basic Actions

| Action              | Description  |
|---------------------|--|
| <b>Approve</b>      | Used to approve the initiated report.<br>This button is displayed, once the user click <b>Authorize</b> .  |
| <b>Audit</b>        | Used to view the maker details, checker details, and report status.  |
| <b>Authorize</b>    | Used to authorize the report created.<br>A maker of the screen is not allowed to authorize the report. Only a checker can authorize a report, created by a maker.            |
| <b>Close</b>        | Used to close a record.<br>This action is available only when a record is created.   |
| <b>Confirm</b>      | Used to confirm the performed action.  |
| <b>Cancel</b>       | Used to cancel the performed action.   |
| <b>Compare</b>      | Used to view the comparison through the field values of old record and the current record.<br>This button is displayed in the widget, once the user click <b>Authorize</b> . |
| <b>Collapse All</b> | Used to hide the details in the sections.<br>This button is displayed, once the user click <b>Compare</b> .  |
| <b>Expand All</b>   | Used to expand and view all the details in the sections.<br>This button is displayed, once the user click <b>Compare</b> .   |



Table 1-2 (Cont.) Basic Actions

| Action                      | Description   |
|-----------------------------|---|
| <b>New</b>                  | Used to add a new record.<br>When the user click <b>New</b> , the system displays a new record enabling to specify the required data.   |
| <b>OK</b>                   | Used to confirm the details in the screen.  |
| <b>Save</b>                 | Used to save the details entered or selected in the screen.   |
| <b>View</b>                 | Used to view the report details in a particular modification stage.<br>This button is displayed in the widget, once the user click <b>Authorize</b> .   |
| <b>View Difference only</b> | Used to view a comparison through the field element values of old record and the current record, which has undergone changes.<br>This button is displayed, once the user click <b>Compare</b> . |
| <b>Unlock</b>               | Used to update the details of an existing record.<br>System displays an existing record in editable mode.   |

## 1.8 Screenshot Disclaimer

Personal information used in the interface or documents is dummy and does not exist in the real world. It is only for reference purposes.



# 2

## Introduction

This topic provides an introduction to User Creation Utility installation process.



# 3

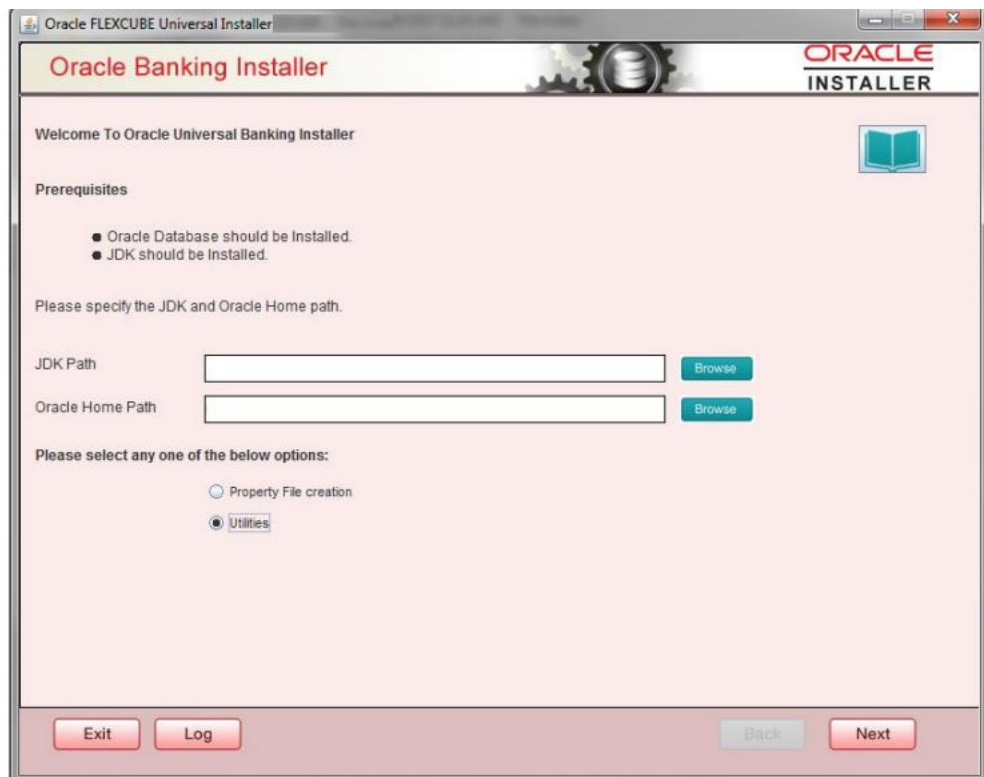
## Build Application for Setup

This topic explains systematic instructions to build the application for setup using the installer.

1. Double-click **FCUBSInstaller.bat** batch file to launch the Oracle FLEXCUBE Universal Banking Installer.

The **Welcome to Oracle Universal Banking Installer** screen displays.

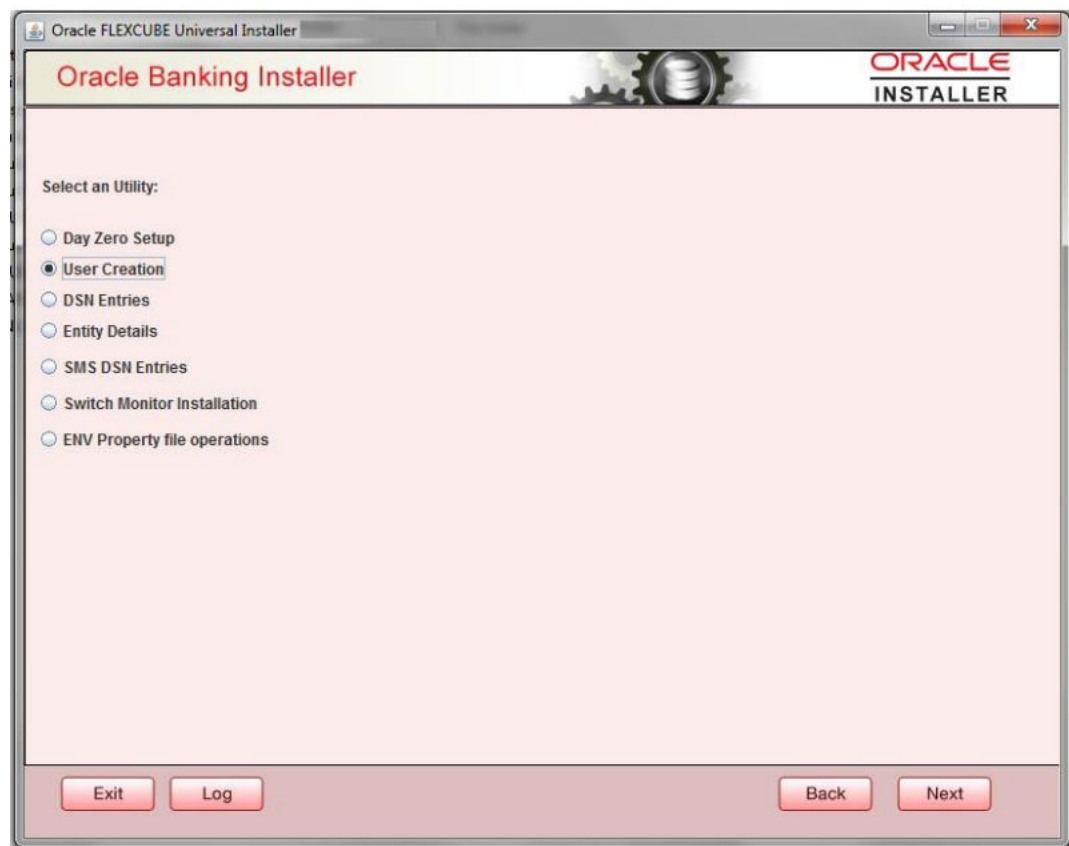
**Figure 3-1 Welcome to Oracle Universal Banking Installer- TBD Redwood**



2. Select the **Utilities** option, and click **Next**.

The **Select an Utility** screen displays.



**Figure 3-2 Select an Utility - TBD Redwood**

3. Select the **User Creation** option, and click **Next**.

The **User Creation Utility** screen displays.



Figure 3-3 User Creation Utility - TBD Redwood

Oracle FLEXCUBE Universal Installer

**Oracle Banking Installer** ORACLE INSTALLER

User Creation Utility

Enter Entity ID  ☐ Mult Entity Required

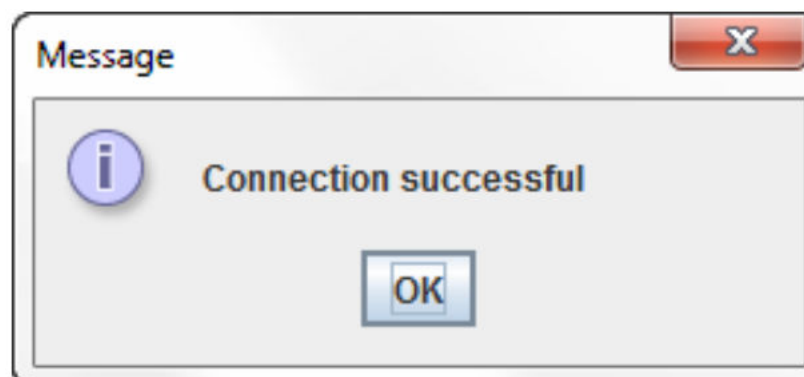
Provide schema details.

| Name                   | Value        |
|------------------------|--------------|
| Username               | installer    |
| Password               | *****        |
| Service Name           | testdb       |
| IP Address             | 10.10.10.10  |
| Port                   | 1521         |
| TNS Connect Descriptor | testdb.world |

4. On the **User Creation Utility** screen, specify the **Entity ID**.
5. On the **User Creation Utility** screen, check the **Multi-Entity Required** box in the multi-entity environment scenario.
6. Specify the **Username**, **Password**, **Service Name**, **IP Address**, **Port**, and **TNS Connect Descriptor** schema details.
7. Click **Test Connection** to check the status of the connection to database.

If the connection is established, the system displays the **Connection Successful** message.

Figure 3-4 Connection Successful- TBD Redwood





8. Click **Next** to proceed.

If the **Multi Entity Required** box is checked, the **User Creation Utility** screen appears to enter entity schema details.

**Figure 3-5 User Creation Utility - TBD Redwood**

The screenshot shows the 'Oracle FLEXCUBE Universal Installer' window with the 'Oracle Banking Installer' title bar. The main window is titled 'User Creation Utility'. It features a text input field for 'Enter Entity ID' containing 'ENTITY\_ID1' and an unchecked checkbox for 'Multi Entity Required'. Below this is a section titled 'Provide schema details.' containing a table with two columns: 'Name' and 'Value'.

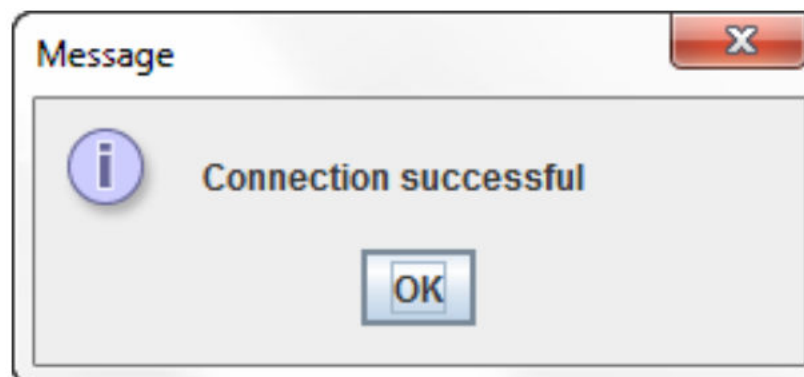
| Name                   | Value        |
|------------------------|--------------|
| Username               | installer    |
| Password               | *****        |
| Service Name           | testdb       |
| IP Address             | 10.10.10.10  |
| Port                   | 1521         |
| TNS Connect Descriptor | testdb.world |

Below the table is a 'Test Connection' button. At the bottom of the window are four buttons: 'Exit', 'Log', 'Back', and 'Next'.

9. Specify the **Username, Password, Service Name, IP Address, Port, and TNS Connect Descriptor** schema details.
10. Click **Test Connection** to check the status of the connection to database.

If the connection is established, the system displays the **Connection Successful** message.

**Figure 3-6 Connection Successful- TBD Redwood**





11. Click **Next**.

The **User Creation Utility** screen displays.

**Figure 3-7 User Creation Utility- TBD Redwood**

Oracle FLEXCUBE Universal Installer

**Oracle Banking Installer** ORACLE INSTALLER

**User Creation Utility**  
User Creation with SMS role for login into the Oracle FLEXCUBE.

☐ External Password

| No | User Name  | Password or LDAP User name |
|----|------------|----------------------------|
| 1  | ADMINUSER1 | *****                      |
| 2  | ADMINUSER2 | *****                      |

Create Users

Exit Log Back Next

12. On the **User Creation Utility** screen, specify the fields.

**Table 3-1 User Creation Utility - Field Description**

| Field            | Description            |
|------------------|------------------------|
| <b>User Name</b> | Specify the user name. |
| <b>Password</b>  | Specify the password.  |

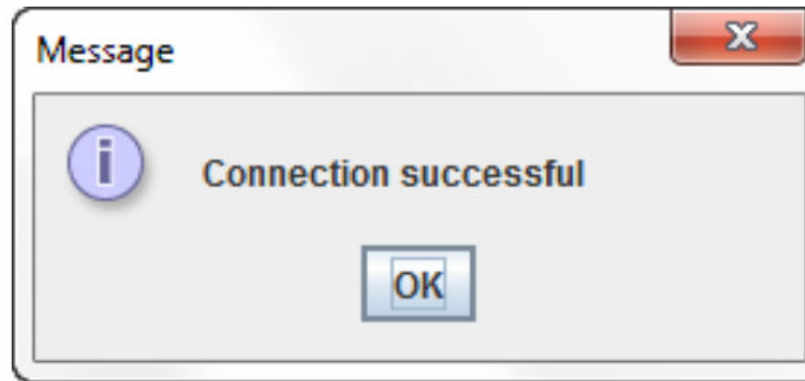
**Note:**

- The user must avoid using **Underscore ( \_ )** in the **User Name**.
- Two users can be created at a time.

13. On the **User Creation Utility** screen, click **Create Users**.

The **Users created successfully** pop-up message displays which represents the successful creation of users.



**Figure 3-8 Connection Successful- TBD Redwood**

14. Click **OK** to save the changes.