

Oracle® Banking Liquidity Management Data Migration User Guide



Release 14.6.1.0.0

F60995-01

August 2022

The Oracle logo, consisting of a solid red square with the word "ORACLE" in white, uppercase, sans-serif font centered within it.

ORACLE®

Copyright © 2018, 2022, Oracle and/or its affiliates.

This software and related documentation are provided under a license agreement containing restrictions on use and disclosure and are protected by intellectual property laws. Except as expressly permitted in your license agreement or allowed by law, you may not use, copy, reproduce, translate, broadcast, modify, license, transmit, distribute, exhibit, perform, publish, or display any part, in any form, or by any means. Reverse engineering, disassembly, or decompilation of this software, unless required by law for interoperability, is prohibited.

The information contained herein is subject to change without notice and is not warranted to be error-free. If you find any errors, please report them to us in writing.

If this is software or related documentation that is delivered to the U.S. Government or anyone licensing it on behalf of the U.S. Government, then the following notice is applicable:

U.S. GOVERNMENT END USERS: Oracle programs (including any operating system, integrated software, any programs embedded, installed or activated on delivered hardware, and modifications of such programs) and Oracle computer documentation or other Oracle data delivered to or accessed by U.S. Government end users are "commercial computer software" or "commercial computer software documentation" pursuant to the applicable Federal Acquisition Regulation and agency-specific supplemental regulations. As such, the use, reproduction, duplication, release, display, disclosure, modification, preparation of derivative works, and/or adaptation of i) Oracle programs (including any operating system, integrated software, any programs embedded, installed or activated on delivered hardware, and modifications of such programs), ii) Oracle computer documentation and/or iii) other Oracle data, is subject to the rights and limitations specified in the license contained in the applicable contract. The terms governing the U.S. Government's use of Oracle cloud services are defined by the applicable contract for such services. No other rights are granted to the U.S. Government.

This software or hardware is developed for general use in a variety of information management applications. It is not developed or intended for use in any inherently dangerous applications, including applications that may create a risk of personal injury. If you use this software or hardware in dangerous applications, then you shall be responsible to take all appropriate fail-safe, backup, redundancy, and other measures to ensure its safe use. Oracle Corporation and its affiliates disclaim any liability for any damages caused by use of this software or hardware in dangerous applications.

Oracle, Java, and MySQL are registered trademarks of Oracle and/or its affiliates. Other names may be trademarks of their respective owners.

Intel and Intel Inside are trademarks or registered trademarks of Intel Corporation. All SPARC trademarks are used under license and are trademarks or registered trademarks of SPARC International, Inc. AMD, Epyc, and the AMD logo are trademarks or registered trademarks of Advanced Micro Devices. UNIX is a registered trademark of The Open Group.

This software or hardware and documentation may provide access to or information about content, products, and services from third parties. Oracle Corporation and its affiliates are not responsible for and expressly disclaim all warranties of any kind with respect to third-party content, products, and services unless otherwise set forth in an applicable agreement between you and Oracle. Oracle Corporation and its affiliates will not be responsible for any loss, costs, or damages incurred due to your access to or use of third-party content, products, or services, except as set forth in an applicable agreement between you and Oracle.

Contents

Preface

Purpose	iv
Audience	iv
Acronyms and Abbreviations	iv
Related Documents	iv

1 Data Migration

Index

Preface

- [Purpose](#)
- [Audience](#)
- [Acronyms and Abbreviations](#)
- [Related Documents](#)

Purpose

This guide provides the information about the data migration which needs to be performed for all the existing customer before implementing the Oracle Banking Liquidity Management Patchset 14.5.4.0.0

Audience

This guide is intended for the implementation teams.

Acronyms and Abbreviations

The list of the acronyms and abbreviations that are used in this guide are as follows:

Table 1 Acronyms and Abbreviations

Abbreviation	Definition
DDL	Data Definition Language
DSL	Domain Specific Language

Related Documents

The related documents are as follows:

- *Oracle Banking Common Core User Guide*
- *Oracle Banking Liquidity Management User Guide*
- *Oracle Banking Liquidity Management Configuration Guide*

1

Data Migration

This topic provide information about the Data Migration.

The table that holds the data for the scheduled sweeps has been moved from the schema of batch service to the schema of sweep service.

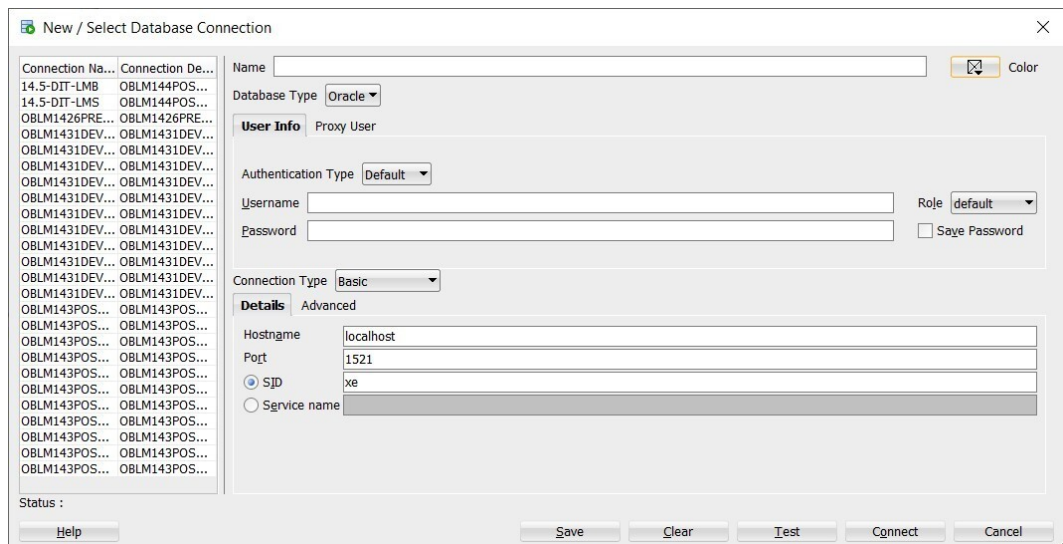
The name of this table is changed from **LMB_TB_BATCH_DATA** to **LMS_TB_SWEEP_DATA**. For newly created structures, the data gets saved directly to the new table but for the existing data, migration must be done manually.

Follow the below steps to manually migrate the data using **Oracle SQL Developer**.

1. On **Oracle SQL Developer** application, create a new connection for Batch and Sweep schema by providing the required information

The **Oracle SQL Developer - Login Screen** application screen displays.

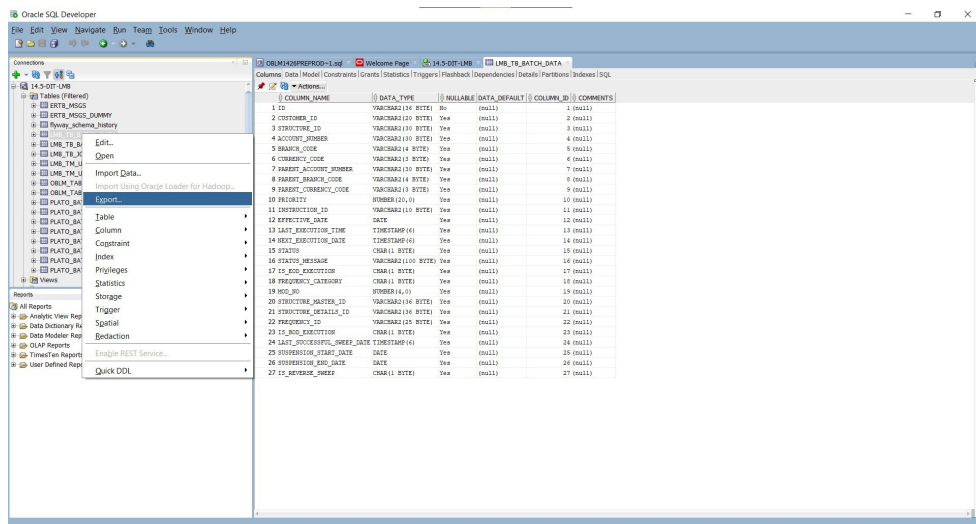
Figure 1-1 Oracle SQL Developer - Login Screen



2. Specify the login Credentials and click **Connect** to connect with batch schema.

The **Oracle SQL Developer** screen displays.

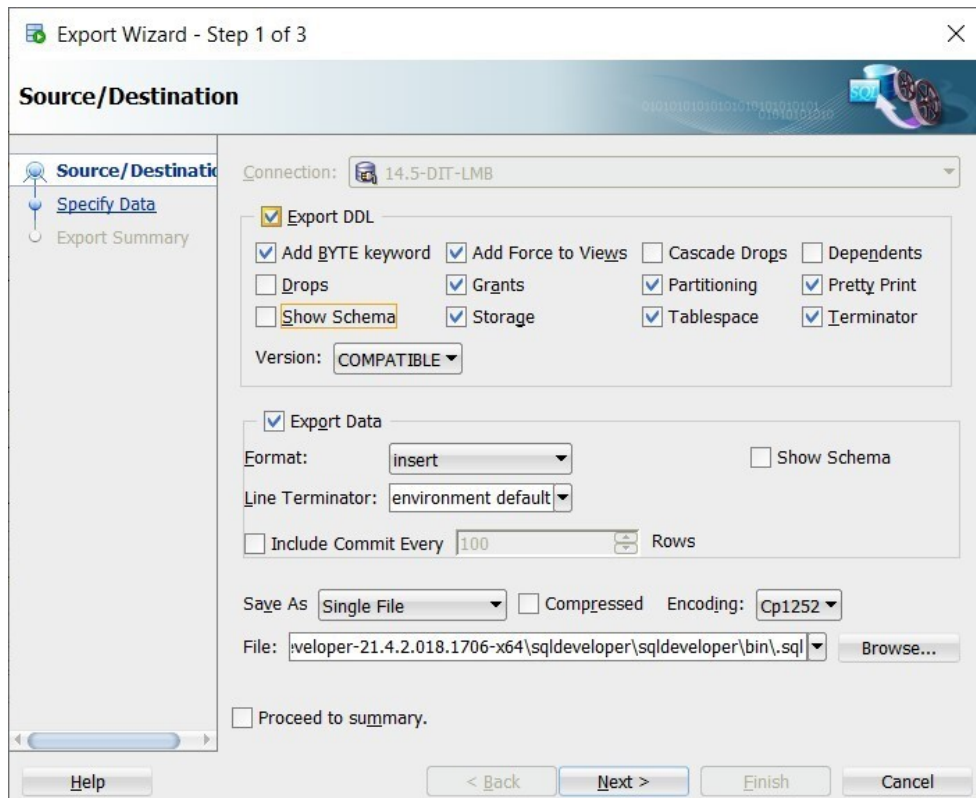
Figure 1-2 Oracle SQL Developer



- Under **Tables**, right-click on **LMB_TB_BATCH_DATA** and click **Export** to export the existing data.

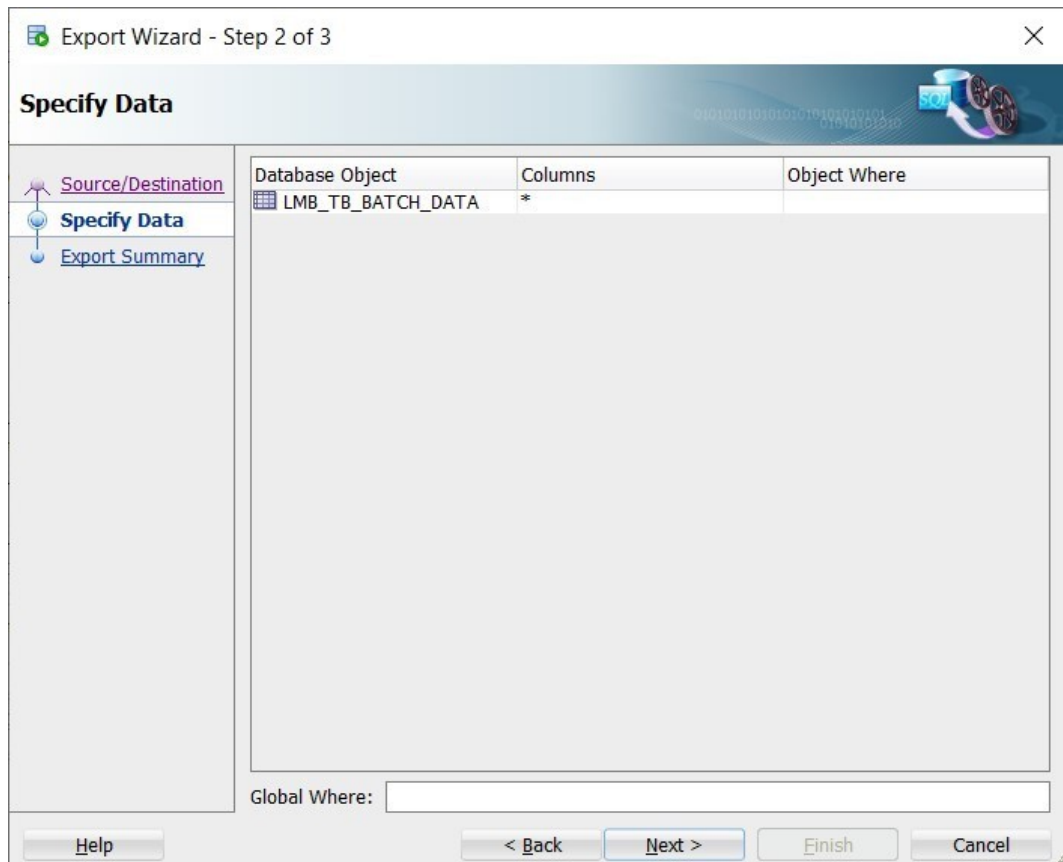
The **Export Wizard - Source** screen displays.

Figure 1-3 Export Wizard - Source



- Uncheck the **Show Schema** checkbox and select the file name.
- Click **Next**.

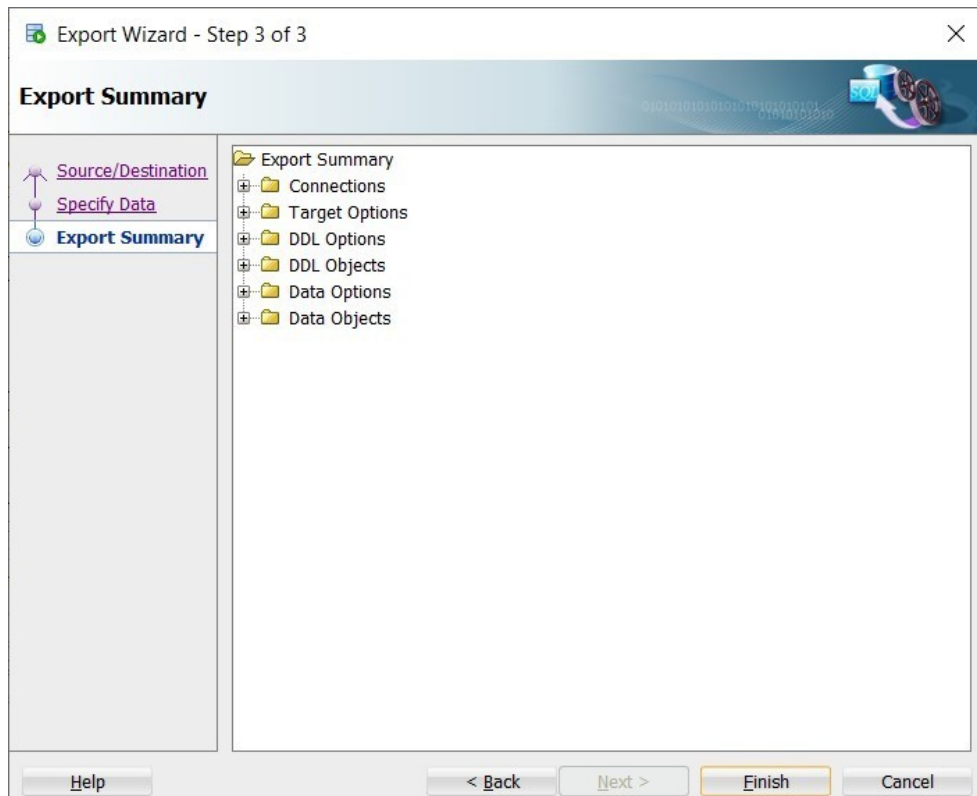
The **Export Wizard - Specify Data** screen displays.

Figure 1-4 Export Wizard – Specify Data

6. Click **Next**.

The **Export Wizard – Export Summary** screen displays.

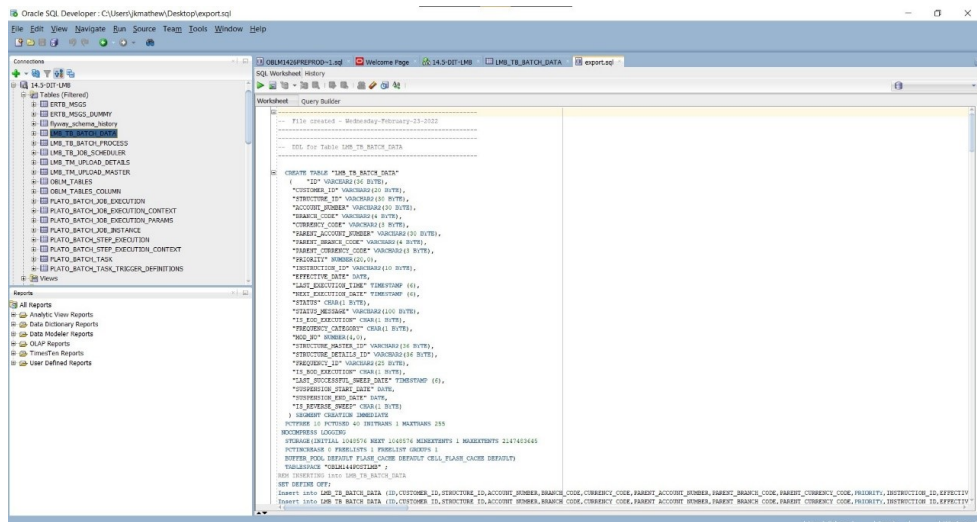
Figure 1-5 Export Wizard – Export Summary



7. Click **Finish**.

The **File Exported** screen displays.

Figure 1-6 File Exported



8. Remove all the DDL statements from the file and retain only the insert statements.
9. Replace all the instances of **LMB_TB_BATCH_DATA** with **LMS_TB_SWEEP_DATA**

Index

D

Data Migration, [1-1](#)