

Oracle® Banking Trade Finance Installer Property File Creation



Release 14.7.4.0.0

F99202-01

June 2024

The Oracle logo, consisting of a solid red square with the word "ORACLE" in white, uppercase, sans-serif font centered within it.

ORACLE®

Oracle Banking Trade Finance Installer Property File Creation, Release 14.7.4.0.0

F99202-01

Copyright © 2007, 2024, Oracle and/or its affiliates.

Primary Authors: (primary author), (primary author)

Contributing Authors: (contributing author), (contributing author)

Contributors: (contributor), (contributor)

This software and related documentation are provided under a license agreement containing restrictions on use and disclosure and are protected by intellectual property laws. Except as expressly permitted in your license agreement or allowed by law, you may not use, copy, reproduce, translate, broadcast, modify, license, transmit, distribute, exhibit, perform, publish, or display any part, in any form, or by any means. Reverse engineering, disassembly, or decompilation of this software, unless required by law for interoperability, is prohibited.

The information contained herein is subject to change without notice and is not warranted to be error-free. If you find any errors, please report them to us in writing.

If this is software, software documentation, data (as defined in the Federal Acquisition Regulation), or related documentation that is delivered to the U.S. Government or anyone licensing it on behalf of the U.S. Government, then the following notice is applicable:

U.S. GOVERNMENT END USERS: Oracle programs (including any operating system, integrated software, any programs embedded, installed, or activated on delivered hardware, and modifications of such programs) and Oracle computer documentation or other Oracle data delivered to or accessed by U.S. Government end users are "commercial computer software," "commercial computer software documentation," or "limited rights data" pursuant to the applicable Federal Acquisition Regulation and agency-specific supplemental regulations. As such, the use, reproduction, duplication, release, display, disclosure, modification, preparation of derivative works, and/or adaptation of i) Oracle programs (including any operating system, integrated software, any programs embedded, installed, or activated on delivered hardware, and modifications of such programs), ii) Oracle computer documentation and/or iii) other Oracle data, is subject to the rights and limitations specified in the license contained in the applicable contract. The terms governing the U.S. Government's use of Oracle cloud services are defined by the applicable contract for such services. No other rights are granted to the U.S. Government.

This software or hardware is developed for general use in a variety of information management applications. It is not developed or intended for use in any inherently dangerous applications, including applications that may create a risk of personal injury. If you use this software or hardware in dangerous applications, then you shall be responsible to take all appropriate fail-safe, backup, redundancy, and other measures to ensure its safe use. Oracle Corporation and its affiliates disclaim any liability for any damages caused by use of this software or hardware in dangerous applications.

Oracle®, Java, MySQL, and NetSuite are registered trademarks of Oracle and/or its affiliates. Other names may be trademarks of their respective owners.

Intel and Intel Inside are trademarks or registered trademarks of Intel Corporation. All SPARC trademarks are used under license and are trademarks or registered trademarks of SPARC International, Inc. AMD, Epyc, and the AMD logo are trademarks or registered trademarks of Advanced Micro Devices. UNIX is a registered trademark of The Open Group.

This software or hardware and documentation may provide access to or information about content, products, and services from third parties. Oracle Corporation and its affiliates are not responsible for and expressly disclaim all warranties of any kind with respect to third-party content, products, and services unless otherwise set forth in an applicable agreement between you and Oracle. Oracle Corporation and its affiliates will not be responsible for any loss, costs, or damages incurred due to your access to or use of third-party content, products, or services, except as set forth in an applicable agreement between you and Oracle.

Contents

1	Creating Property File for Oracle Banking Trade Finance Installer	
1.1	Introduction	1-1
1.2	Creating Property File	1-1
1.2.1	Custom Installation	1-11
1.2.2	Setting General Properties	1-11
1.2.3	Setting Single Sign on	1-14
1.2.4	Setting SMTPS(Email) details	1-16
1.2.5	Configuring Scheduler	1-17
1.2.6	Setting Scheduler EMS Properties	1-20
1.2.7	Setting EMS FTP/FTPS Properties	1-22
1.2.8	Setting Scheduler BIP/GI Upload Queue Properties	1-24
1.2.9	Setting Reports details	1-25
1.2.10	Saving Property File	1-27

List of Figures

1-1	Oracle Banking Installer - Property File Creation - DataSource	1-11
1-2	Oracle Banking Installer - Property File Creation - Single Sign on	1-15
1-3	Oracle Banking Installer - Property File Creation - SMTPS/Branch/DMS	1-17
1-4	Oracle Banking Installer - Property File Creation - Scheduler Queues	1-18
1-5	Oracle Banking Installer - Property File Creation - Scheduler EMS Queue	1-20
1-6	Oracle Banking Installer - Property File Creation - EMS FTP/FTPS	1-23
1-7	Oracle Banking Installer - Property File Creation - Scheduler BIP/GI Upload Queue	1-25
1-8	Oracle Banking Installer - Property File Creation - Reports	1-25

List of Tables

1-1	CSTB_DEBUG_USERS (User Level)	1-13
1-2	CSTB_DEBUG (Bank Level)	1-13
1-3	Property File Creation - Scheduler Queues	1-18
1-4	Property File Creation - Scheduler EMS Queue	1-20
1-5	Property File Creation - EMS FTP/FTPS Configuration	1-23
1-6	Property File Creation - Reports - BI Publisher Properties.	1-26

1

Creating Property File for Oracle Banking Trade Finance Installer

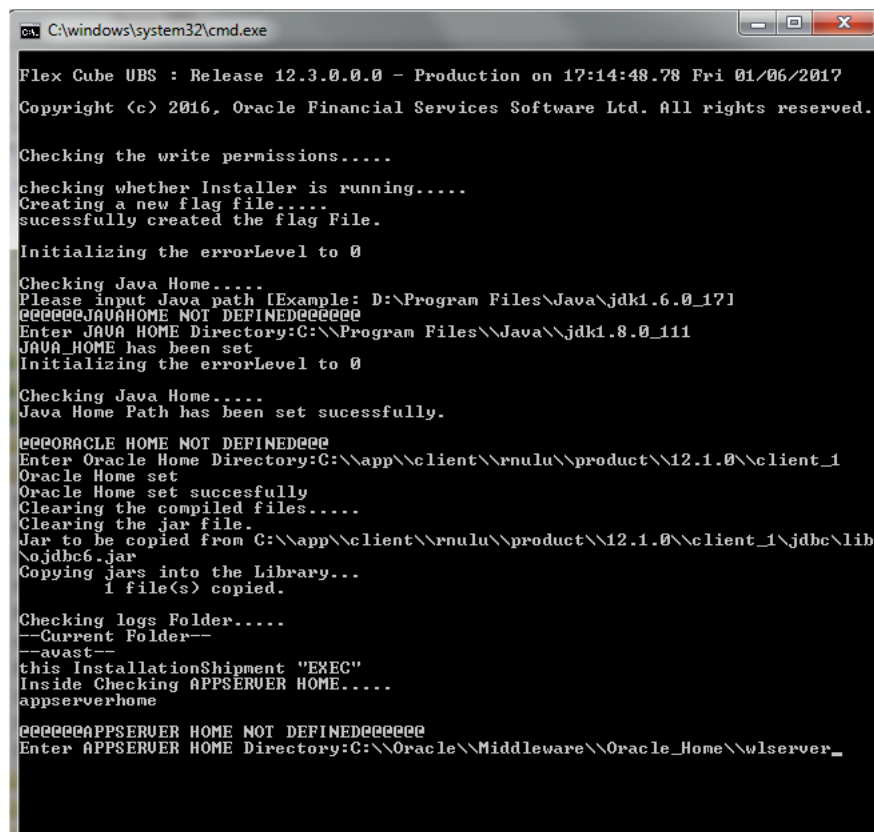
1.1 Introduction

This chapter explains the steps to create property file for Oracle Banking Trade Finance using Oracle Banking Trade Finance Installer Application. While creating this property file, the environment property file also gets generated.

1.2 Creating Property File

To create the property file for Oracle Banking Trade Finance, follow the steps given below:

1. Launch Oracle Banking Trade Finance Installer i.e. FCUBSInstaller.bat (for Windows), and FCUBSInstaller.sh (for Linux, bash shell recommended). These files are available in INSTALLER/SOFT/GUI



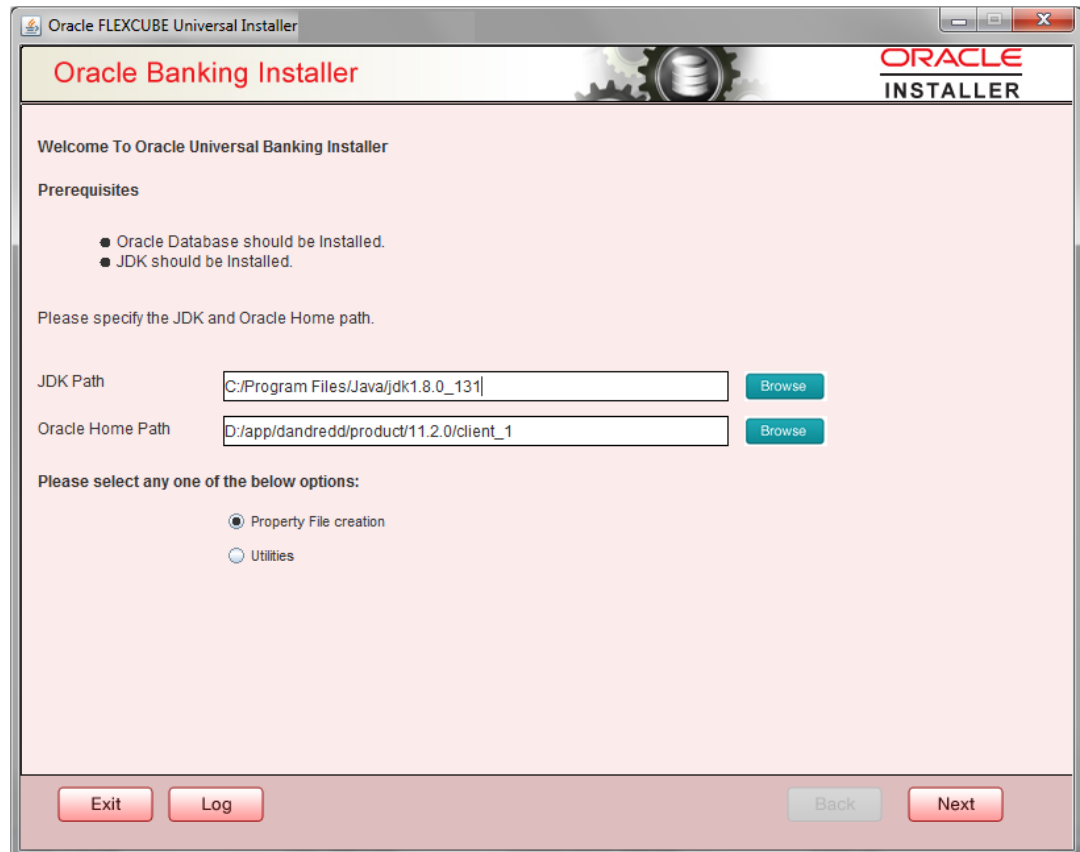
In the first screen, provide the following details:

- a. **JAVA HOME PATH**

Provide the JDK home path with the latest version.

- b. **ORACLE HOME PATH**
Provide the Oracle 18C Client Path.
- c. **APP SERVER HOME PATH**
Provide the app server home path

After providing these details, INSTALLER-GUI gets started. And follow the below details. Ensure the Pre-requisites are available.



Enter the following details

JDK Path

Maintain Home folder path of JDK. The JAVA HOME path given in previous screen gets defaulted.

Oracle Home

Maintain home folder path of Oracle Database Client. The ORACLE HOME path given in previous screen gets defaulted.

Select one of the radio buttons:

- a. Property File creation
- b. Utilities

Based on the selection, Next screen will be shown .Click **Property File creation** for the current case.

- 2. Click '**Next**' and the following screen is displayed.

Oracle FLEXCUBE Universal Installer 12.5.0.0.0

Oracle Banking Installer

ORACLE
INSTALLER

Select one of the Components

Load Existing Property File

INFRA Scheduler Gateway Switch Interface Installation

Select Oracle Product Processors

Oracle FLEXCUBE Universal Banking

Oracle FLEXCUBE Enterprise Limits and Collateral Management (CO-DEPLOY)

Oracle Banking Payments

Oracle Banking Corporate Lending Open Development Tool

Oracle Banking Treasury

Oracle Banking Trade Finance

Select Plugins to be Installed

Branch Load Existing Branch Property File

Host Address BPEL Scheduler

Reports OFTW FGL SIANET Adapter

DMS Insulation ELCM Adapter required

- a. Select the component for which property file is to be created.
 - i. INFRA is for FCUBS property file creation .To create property file for Scheduler or Gateway or Switch Interface Installation, please refer the respective property file creation document.
- b. Select Oracle Banking Trade Finance for Trade Finance Property file creation. In case of co-deployment one or more Product Processors can be included with Trade Finance.
 - i. Oracle Financial Universal Banking product processor contains Rest of Flexcube other than Payments, ELCM and OBCL etc.
 - ii. Oracle FLEXCUBE Enterprise Limits and Collateral Management (ELCM) has three types. They are Embedded, CO-Deploy and Standalone (Elcm Adapter). Please choose proper option. Oracle FLEXCUBE Enterprise Limits and Collateral Managements can be selected as individual application or along with Oracle Financial Universal Banking. Also ELCM Adapter required checkbox is available.
 - iii. Oracle Banking payments can be selected.
 - iv. Oracle Banking Corporate Lending can be selected.
 - v. Open Development Tool(ODT) can be selected to install ODT, that allows end user to design ODT screens.
 - vi. Oracle Banking Treasury can be selected.
 - vii.
- c. In the screen above, select the Plug-ins to be included in the application.

d. If you need to modify an existing property file, load it using the respective browse button.

e.

Plug-ins will be enabled and disabled based on the combination of Product Processors and components selected.

These are the plug-ins available for Oracle Banking Trade Finance:

- Scheduler
- Reports

These are the plug-ins available for Oracle Banking Trade Finance if co-deployed with Oracle Banking Payments

- Scheduler
- Reports
- BPEL

You can load existing property-file to make any modifications.

3. Click 'Next' again and the following screen is displayed:

Oracle FLEXCUBE Universal Installer 12.5.0.0.0

Oracle Banking Installer

SMS Schema Details

Name	Value
Username	FC144190BTF
Password	••••••••
Service Name	FC144TFPDB3
IP Address	whf00fw.in.oracle.com
Port	1521
TNS Connect Descriptor	FC144TFPDB3

Test Connection

Entity Schema Details Same as SMS Schema

Entity Id: JNDI Name:

Name	Value
Username	FC144190BTF
Password	••••••••
Service Name	FC144TFPDB3
IP Address	whf00fw.in.oracle.com
Port	1521
TNS Connect Descriptor	FC144TFPDB3

Compile in All Entities

Test Connection

Prev Next

Exit Log Back Next

Provide the SMS schema details to capture the credentials which will be used for DB Compilation.

 **Note:**

IP Address should be same as mentioned in the TNSnames.ora

Once the connection is successful env.properties file present in path `INSTALLER\SOFT\GUI\logs\env.properties` will get updated with schema details in encrypted format.

For Multi-Entity Details

Scenario for Single Entity:

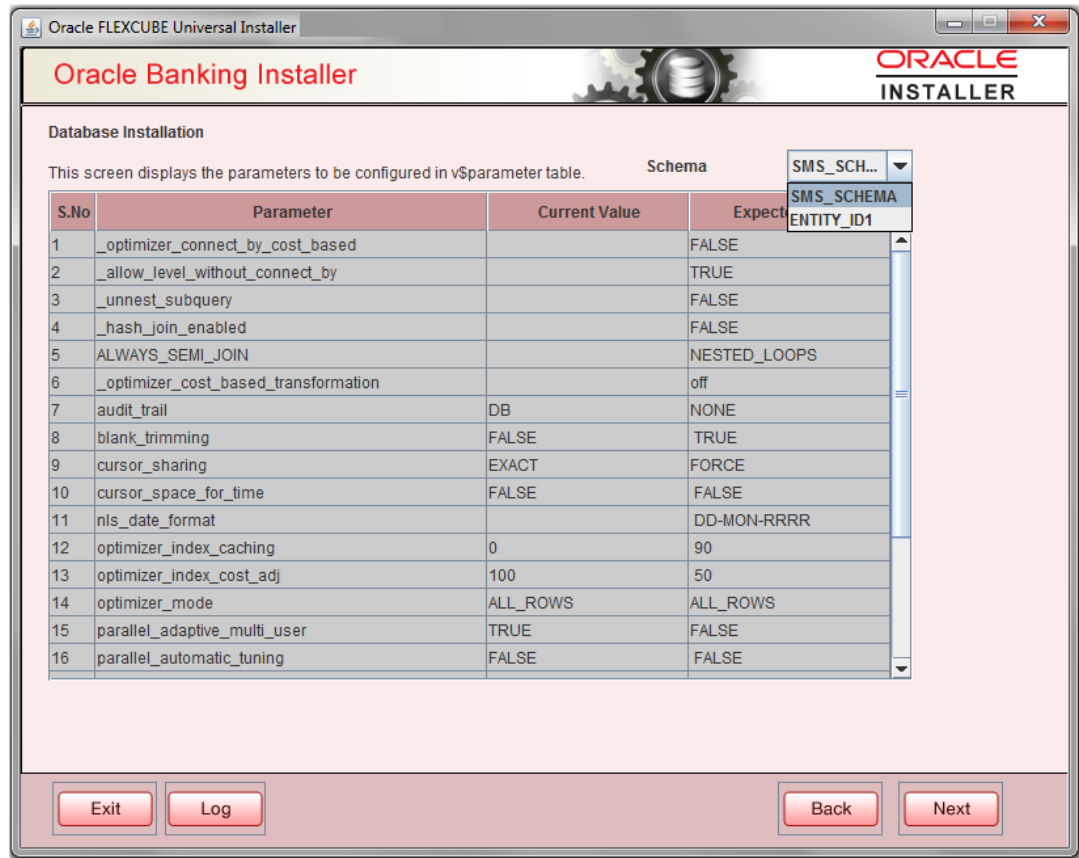
- Here Entity Schema is mandatory, atleast minimum one entry should be provided.
- Entity Id value is default i.e. 'ENTITY_ID1' for first entry.
- Provide the JNDI Name for the ENTITY_ID1. By default the jndi name is 'jdbc/fcjdevDS'
- Give the Schema Details for the Entity1.
- Here Compile In All Entities Field is 'N'. (As using the Single Entity Concept).

Scenario for More than One Entity, i.e. Multi Entity :

- After providing the Single Entity details, click on '+' Add the rows.
 - Now give the details for Entity_ID2. Here the field is mandatory.
 - Provide the schema details and the JNDI name.
 - Next and Prev button is to traverse for entity screens.
 - Can also add the entities and delete the entities.
4. Click on '**Test Connection**' button. After Successful connection click on '**Next**' button to proceed and below screen occurs. This screen displays database parameters listed in v\$parameter table.

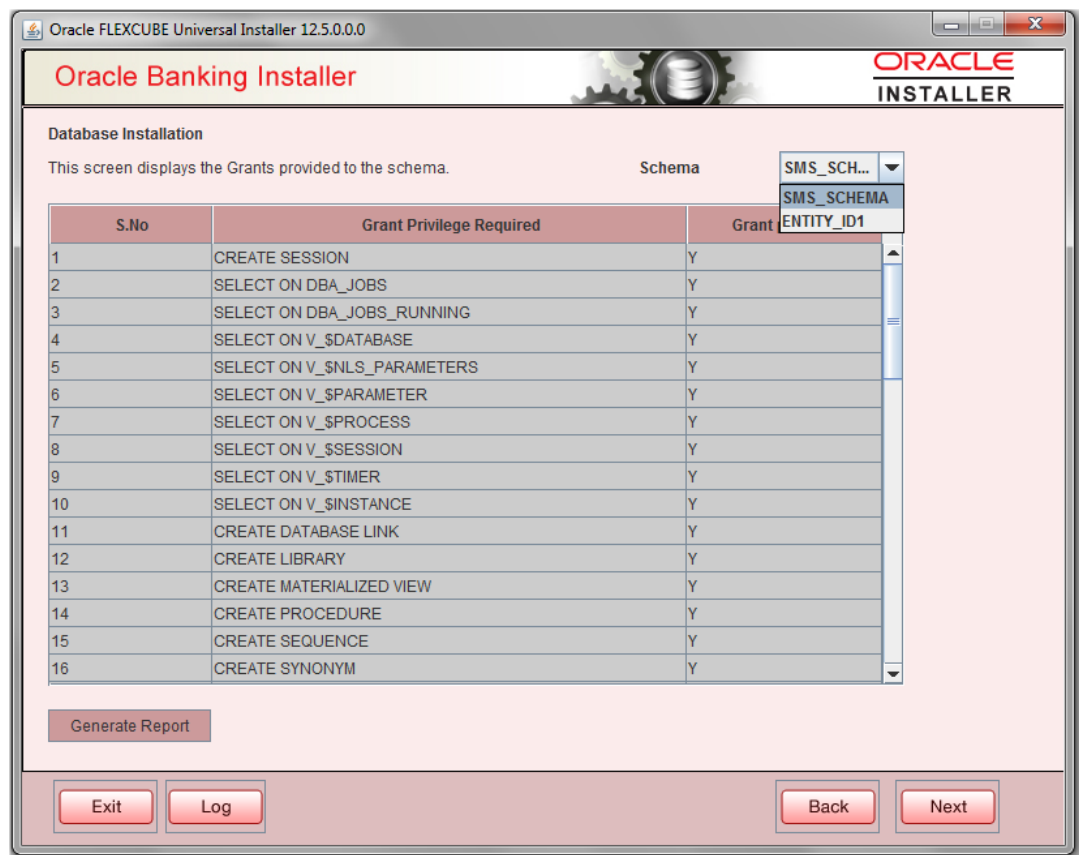
This page is Read only used as reference to know the database parameters.

Schema drop down list is provided to verify parameters of SMS and Entity Schemas.



5. Click on **'Next'** Button. This screen displays the grants provided to the schema. If object compilation is required and the privilege is not given, then you can find that out from this screen.

Schema drop down lists SMS and Entity Schemas. Select Schema and proceed further.



- Click '**Generate Report**' button, the installer creates an SQL file 'grantScript.sql' containing the script for granting the privileges in the '**Logs**' folder and the following screen is displayed.

You can use this file to get the access.



Only the sys user can execute the file 'grantScript.sql' for granting privileges.

- Click '**Next**' again and the following screen is displayed:

Oracle Banking Installer

Provide Environment details.

EAR Name:

Context Name:

File Separator Style:

Application Server:

External JSUIXML Required

External PropertyFile Required

Application Server Path:


Source Path:

Ear Destination Path:

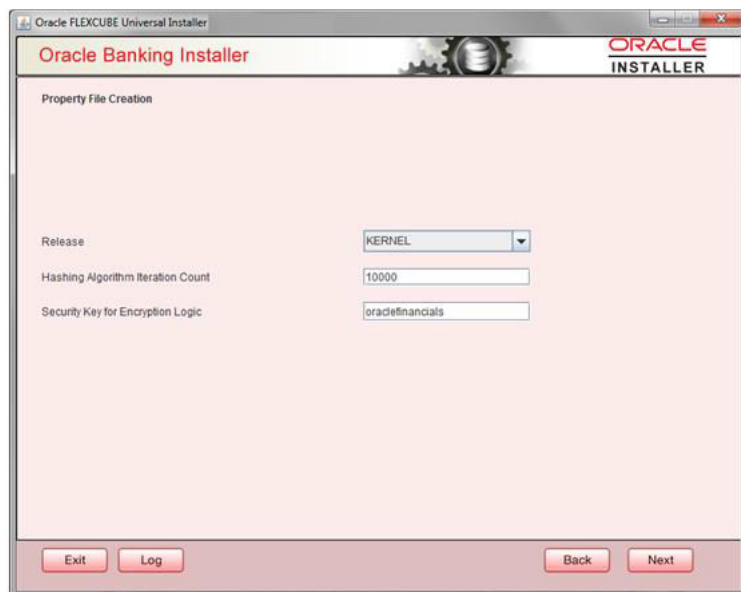
External JSUIXML Path:

External PropertyFile Path:

Field	Description
EAR Name	Specify a name for the Application to be deployed. You cannot use special characters such as '.' (Dot), ',' (comma), '\$' etc. However, you may use '_' (underscore). – Applicable for both Windows and Linux.
Context Name	Based on the Application type selected, the Installer displays the application context. However, you may modify the default value. This information will be updated in 'application.xml'. In case of a WebLogic server, this will be updated in 'weblogic.xml'.
File Separator Style	Specify the type of file separator (For example: Linux or Windows). Select the appropriate one from the drop-down list. You also need to specify the version of the selected operating system.
Application Server	Specify the application server in which you are creating the property file. Select the appropriate one from the adjoining drop-down list. For WebSphere, External JSUIXML Required option is not supported.
External JSUIXML Required	Specify whether screen changes will be deployed as External JSUIXML for the application. EXTERNAL_JSUIXML_REQUIRED=Y/N: Depending on requirement. EXTERNAL_JSUIXML_REQUIRED=N: JS and UIXML files are included inside the application EAR. EXTERNAL_JSUIXML_REQUIRED=Y: JS and UIXML and HELP files are kept in an external path in the application server.

Field	Description
External Property File Required	<p>Specify whether screen changes will be deployed as External fcubs.properties for the application.</p> <p>EXTERNAL_PROPERTY_PATH_REQUIRED =Y/N: Depending on requirement.</p> <p>EXTERNAL_PROPERTY_PATH_REQUIRED =N: fcubs.properties file is included inside the application EAR.</p> <p>EXTERNAL_PROPERTY_PATH_REQUIRED =Y: fcubs.properties file is kept in an external path in the application server.</p>  <p>External property file path should have the property file name also with it.</p> <p>For example: C:\App\fcubs.properties</p>
Application server path	Provide the Application Server Path.
Source Path	Provide the source path of the console exec directory. (Mention exact folder name after unzip the source).
Ear Destination path	Specify the path where Ear needs to be copied after building it using SOFT Installer.
External JSUIXML Path	<p>In case External JSUIXML Required option is checked, External JSUIXML path on the application server machine has to be specified here. External JSUIXML required option is supported only for Weblogic Application Server. EXTERNAL_JSUIXML_PATH:</p> <p>ex:- /scratch/work_area/DEV/FC124_UBS/JS_UIXML_HELP -this can be any path in the Application server.</p>
External Property File Path	In case External Property File required option is checked, External Property File path on the application server machine has to be specified here. ss

8. Click 'Next' to continue and following screen is displayed:



Field	Description
Release	<p>Specify the Release in which you are creating the property file. Default Option would be 'KERNEL'. The valid options are:</p> <ul style="list-style-type: none"> • KERNEL <p>Specify the Hashing Algorithm Iteration Count. By default, it is 1000.</p> <p>'Security Key for Encryption Logic' is the key (exact 16 characters) for all encryption logic. By default is 'oraclefinancials'.</p>

- [Custom Installation](#)
This topic explains the systematic instructions for custom installation.
- [Setting General Properties](#)
This section describes the process of setting common properties of Oracle Banking Trade Finance Payments.
- [Setting Single Sign on](#)
This topic explains the systematic instructions of setting single sign on.
- [Setting SMTPS\(Email\) details](#)
This section describes the method to configure email details, whichever is required.
- [Configuring Scheduler](#)
This topic explains the systematic instructions to configure scheduler data source.
- [Setting Scheduler EMS Properties](#)
This topic explains the Scheduler EMS Properties for the property file creation.
- [Setting EMS FTP/FTPS Properties](#)
This topic explains the EMS FTP/FTPS properties.
- [Setting Scheduler BIP/GI Upload Queue Properties](#)
This topic explains the Scheduler BIP/GI Upload Queue Properties for the property file creation.
- [Setting Reports details](#)
This topic explains the BI Publisher properties.
- [Saving Property File](#)

1.2.1 Custom Installation

This topic explains the systematic instructions for custom installation.

Figure 1-1 Oracle Banking Installer - Property File Creation - DataSource

Oracle FLEXCUBE Universal Installer

Oracle Banking Installer

ORACLE
INSTALLER

Property File Creation - DataSource

Please enter DataSource Names

SMS Data Source

Branch Data Source

Scheduler Data Source

ELCM Data Source

OFCL Data Source

PM Online JNDI

PM Batch JNDI

ELCM Webservices Provider URL

Host Server URL

Standalone Scheduler URL

Exit Log Back Next

1. Please enter Data sources required which will be asked as per the product, Plug-in and Component combinations chosen in the first screen.
2. SMS Data source will be always enabled as it is required for most of the cases.
3. Host Server is the server where Trade Finance application is deployed/to be deployed.
4. **Standalone Scheduler URL** will be enabled if Standalone option is selected. The URL of the standalone scheduler should be given here.

1.2.2 Setting General Properties

This section describes the process of setting common properties of Oracle Banking Trade Finance Payments.

The installer displays the '**General Property**' screen.

Specify the following details:

Debug Logs Required

If debug option is required, select 'Yes' from the drop-down list. If not required, select 'No'. By default the value is 'No'.

Note:

Parameter APPLICATION_WORK_AREA in fcubs.properties will be updated to "Work Area" path provided during installation.

Parameter DEBUG will be updated based on "Debug Logs Required" selection.

To log debug for the user, following should be available.

- In Day 0 Setup CSTB_PARAM table will be appended with parameter name WORK_AREA and path provided for debug logs
- CSTB_DEBUG table should have entries for required modules.
- Corresponding user entries should be input in CSTB_DEBUG_USERS.

Table 1-1 CSTB_DEBUG_USERS (User Level)

Module	Debug	User ID
SM	Y	XYZ

Table 1-2 CSTB_DEBUG (Bank Level)

Module	Debug
SM	Y

All the configuration will be done using back-end scripts, which can be executed by Data Controller.

Snapshot of 'fcubs.properties' is displayed below:

```
##### COMMON PROPERTIES #####
APPLICATION_NAME=FCJ
APPLICATION_EXT=FCROFC
APPLICATION_SERVER=WL
APPLICATION_WORK_AREA=/scratch/work_area/DEV/FC125R2/APPLGGS
DEBUG=Y
SSL_ENABLED=Y
OPSS_AVAILABLE=N
BRANCH_CENTRALIZED=Y
REQUEST_TIME_OUT=1800000
```

Change Logs can be visited to view audit information.LOV Fetch Required

If you check this box, the option lists in Oracle Banking Trade Finance displays the matching values based on the first characters that you enter in a field. If you specify the first three characters of a value to be entered in an option list and tab out, the system displays the complete list of values that are matching the first three characters.

If you do not check this, option lists does not show the matching values based on the first few characters. You need to specify the complete value against the field.

Field	Description
External LOV Required	If you check this box, External LOV option for external Limits in Banking Trade Finance will be enabled.
Work Area	Specify the work area. For example: D:\BrnDbgs\
Signature Path	Specify the location at which the signature images should be placed.
Excel Path	Specify the location at which the excel files should be generated.
Request Time Out	Specify the database request timeout value in milli seconds. This is the maximum number of seconds the database waits for a query to return the result. By default it is 1800000 milli seconds.
Connection Time Out	Specify the database connection timeout value in seconds. This is the maximum number of seconds the application waits for a connection to the database to open.
Session Time Out	Enter the session time out value in seconds. This is the maximum number of seconds during which the application gets active without any user intervention. If there is no user intervention continuously for the duration specified here, the user session gets expire.

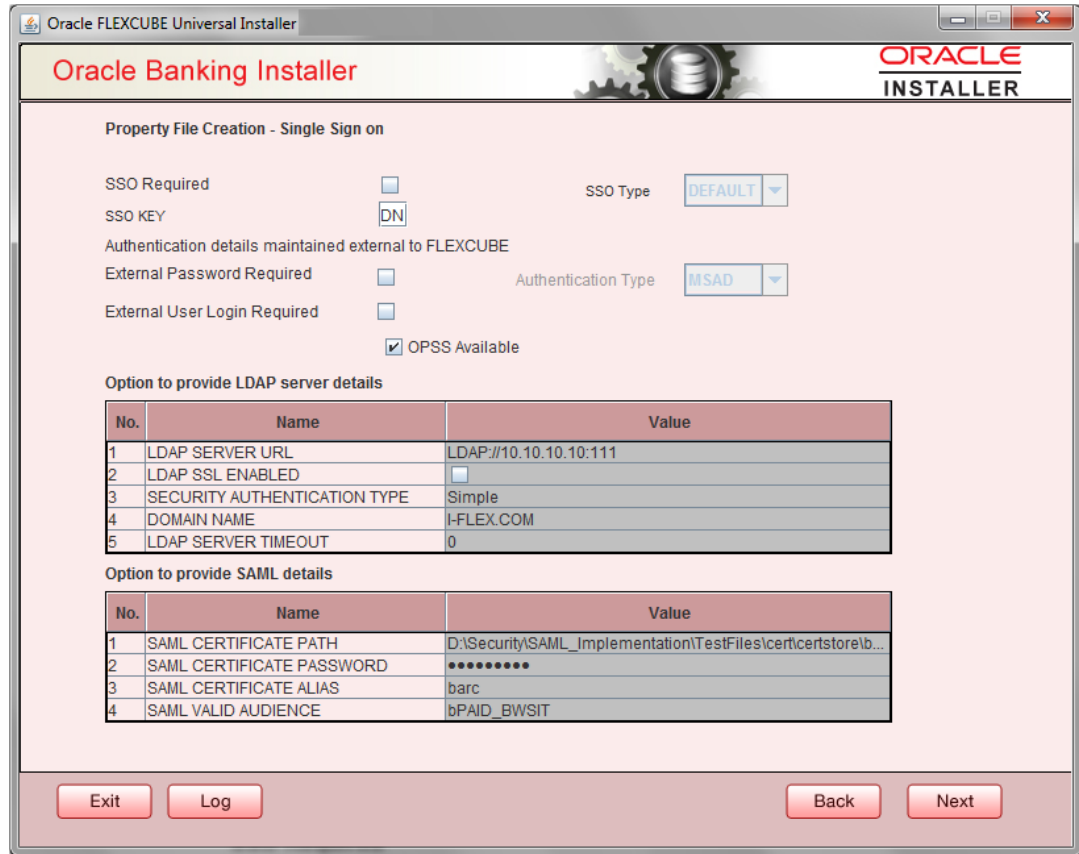
Field	Description
Max Image Size	Specifies the maximum image size that can be uploaded. The default size is 1048576 bytes.
CSS Style	Specify the CSS style to be used from the adjoining drop down list. You can select one of the following CSS styles: <ul style="list-style-type: none">• Default – select this to apply the default style provided along with Oracle Banking Trade Finance• Custom – select this to apply a custom style
Name	Specify the name of the CSS style. Once you have specified the above details, click ' Next '
Language	Specify the language in which you wish to see Oracle Banking Trade Finance UBS. ENGLISH is the default language. However, based on the requirement, you can set a different language. Select the appropriate one from the drop-down list. Based on the language selected, the installer displays the ISO code.
Application Title	Specify the application title. For example: Oracle Banking Trade Finance.
Version	Specify the application version. For example: 14.4.0.0.0
CopyRights	Specify the copyright details. For example: Copyright © 2020, Oracle and/or its affiliates. All rights reserved.

1.2.3 Setting Single Sign on

This topic explains the systematic instructions of setting single sign on.

1. The installer displays the **Single Sign on** screen.


Figure 1-2 Oracle Banking Installer - Property File Creation - Single Sign on



2. On the **Oracle FLEXCUBE Universal Installer - Property File Creation - Single Sign on** screen, specify the following details.

For more information, refer to the field description table.

Field	Description
SSO Required	Check this box to enable single sign-on (SSO). If you check this box, you need to enter the SSO Key.
SSO Type	<p>This is disabled. This is enabled on selecting SSO Required Flag. Specify the SSO Type from the list of following:</p> <ol style="list-style-type: none"> 1. DEFAULT 2. TOKEN 3. SAML <p>By default, 'DEFAULT' option is selected; however, you can change it. IF SAML is selected, SAML details table below will be enabled. Please enter SAML details such as Certificate Path, password, alias and valid audience.</p>
SSO KEY	<p>Specify the SSO key. If you have checked the box 'SSO Required', it is mandatory to specify the SSO key. By default the value is 'DN'</p> <p>If you have checked the box 'SSO required', the Installer skips the following two screens and directly navigate to the SSL screen shown below in this manual.</p> <p>If you have not checked the box 'SSO required', then on clicking the 'Next' button, the screen for enabling SSL options is displayed:</p>

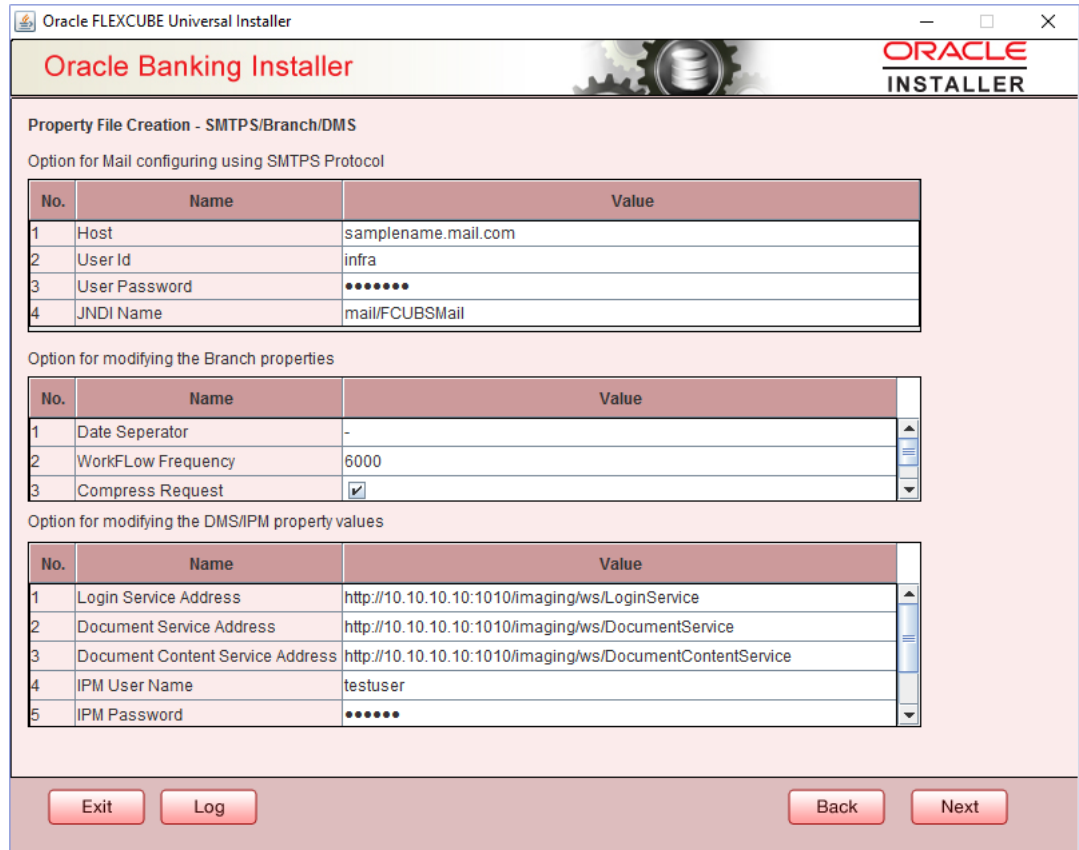
Field	Description
External Password Required	<p>Check this box to allow the user-login using MSAD/LDAP password irrespective of the user ID. If you check this box, the user ID can be either the MSAD/LDAP/ user ID or the FCUBS user ID. And the password can be MSAD/LDAP/ server password only.</p> <p>If LDAP is selected, table related to LDAP will be enabled .Please enter LDAP server URL,SSL enabled, Security authentication type, Domain Name and LDAP Server timeout details.</p> <p>By default, this check box is unchecked. However, you can change this.</p>
External User Login Required	<p>Check this box to enable user login using MSAD/LDAP/ user ID. If you check this box, the user can login using MSAD/LDAP/ server user ID as well as using FCUBS user ID.</p> <p>If you do not check this box, the user can login using FCUBS user ID only.</p> <p>By default, this check box is unchecked. However, you can change this.</p>  <p>'Authentication Type' is enabled if one of the above check boxes is checked.</p>
Authentication Type	<p>Select the Authentication Type from the adjoining drop-down list. This is the type of external server that is used for authentication. This option is enabled only when External Password Required checkbox is checked. You can select one of the following options:</p> <ul style="list-style-type: none"> • MSAD (Microsoft Active Directory) • LDAP (Lightweight Directory Access Protocol) <p>By default, 'MSAD' is selected; however, you can change it.</p> <p>Specify the following details.</p> <p>OPSS is available only for Weblogic and is not supported for Websphere.</p> <p>IF OPSS available is checked for Weblogic, the symmetric key is not stored in the property file for security reasons. If OPSS available is unchecked, the symmetric key is available in the property file and a warning message is displayed to the user.</p>
SSL Enabled	<p>SSL Enabled is checked by default.</p> <p>Click 'Next' and the next screen gets displayed.</p>

1.2.4 Setting SMTPS(Email) details

This section describes the method to configure email details, whichever is required.

1. Click the **Next** button and the following screen is displayed.

Figure 1-3 Oracle Banking Installer - Property File Creation - SMTPS/Branch/DMS



2. On the **Oracle Banking Installer - Property File Creation - SMTPS/Branch/DMS** screen, specify the - SMTPS/Branch/DMS fields.

For SMPTS protocol, specify the following details and refer below field description table.

Field	Description
Host	Specify the SMTP host name.
User ID	Specify the user ID.
User Password	Specify the user password.
JNDI Name	Specify the JNDI name. In the next table specify the branch properties like Date Separator, WorkFlow frequency, Compress Request as required. Once you have specified the above details, click ' Next ' and system displays the next screen.

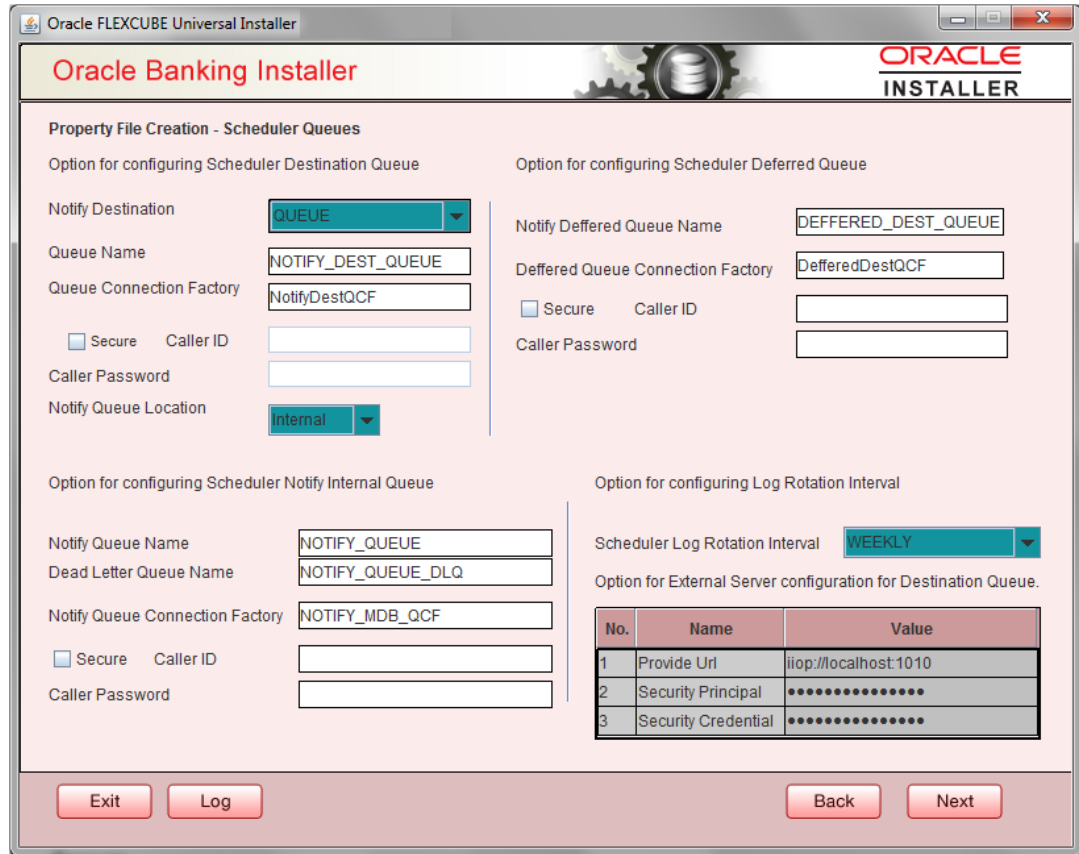
1.2.5 Configuring Scheduler

This topic explains the systematic instructions to configure scheduler data source.

If "**Scheduler Standalone**" is chosen during plug-in selection time, all the below screens mentioned under scheduler configuration will "**not be applicable**".

1. The system displays the following screen: **Oracle Banking Installer - Property File Creation - Scheduler Queues**.

Figure 1-4 Oracle Banking Installer - Property File Creation - Scheduler Queues




2. On the **Oracle Banking Installer - Property File Creation - Scheduler Queues** screen,specify the fields. For more information, refer the field description table.

Table 1-3 Property File Creation - Scheduler Queues

Field	Description
Scheduler Log Rotation Interval	Select the interval between each rotation of scheduler log. Given options are: <ul style="list-style-type: none"> • DAILY • WEEKLY • MONTHLY
Notify Destination	Specify the notify destination. Select one of the following options: <ul style="list-style-type: none"> • QUEUE • TOPIC
Queue Name	Set ' NOTIFY_DEST_QUEUE ' as the destination queue name.
Queue Connection Factory	Set ' NotifyDestTCF ' as the queue connection factory.
Secure	Check this box to indicate that it is a secured queue connection factory. If you check this box, you will be prompted to specify the Caller ID and Caller Password as shown in the following screen.
Specify the following details:	
Notify Deferred Queue Name	Set ' DEFERRED_DEST_QUEUE ' as the notify differed queue name.
Deferred Queue Connection Factory	Set ' DefferedDestQcf ' as the deferred queue connection factory.

Table 1-3 (Cont.) Property File Creation - Scheduler Queues

Field	Description
Secure	Check this box to indicate that it is a secured deferred queue connection factory. If you check this box, you will be prompted to enter the caller ID and caller password.
Specify the following details:	
Notify Queue Name	Set ' NOTIFY_QUEUE ' as the notify queue name.
Dead Letter Queue Name	Set ' NOTIFY_QUEUE_DLQ ' as the dead letter queue name.
Notify Queue Connection Factory	Set ' NOTIFY_MDB_QCF ' as the notify queue connection factory.
Secure	Check this box to indicate that it is a secured queue connection factory. If you check this box, you will be prompted to enter the caller ID and caller password as shown in the following screen.
Notify Queue Location	<p>Specify the notify queue location. Select one of the following options:</p> <ul style="list-style-type: none"> • Internal • External  <p>For Oracle WebLogic application server, the notify queue location should be selected as 'Internal'.</p> <p>If you choose 'External' following details for the external queue will be enabled.</p>
Provider URL	<p>Specify the provide URL:</p> <p>(iiop://localhost:1010).</p> <p>1010 is the default IIOP port.</p>
Security Principal	Specify the login ID to access the application server.
Security Credentials	Specify the password to access the application server.

Application Server	EMS Out Initial Context Factory
Oracle WebLogic	t3://<ip_adress>:port For example: t3://10.10.10.10:1010 Here, 10.10.10.10 represents the local host and 1010 to the target server default port (AdminServer/ManagedServer).
IBM WebSphere	iiop://<ip_adress>:port For example: iiop://10.10.10.10:1010 Here, 1010 represents the default iiop port

Field	Description
Security Principal	Specify the login ID to access the application server.
Security Credentials	Specify the password to access the application server. Click ' Next ' to proceed with scheduler configuration.



If you choose **Internal** as the **Notify Queue Location**, this screen is not displayed.

3. Click **Next** and the following screen is displayed.

1.2.6 Setting Scheduler EMS Properties

This topic explains the Scheduler EMS Properties for the property file creation.

1. Click the **Next** button and the following screen is displayed. **Oracle Banking Installer - Property File Creation - Scheduler EMS Queue** screen is displayed.

Figure 1-5 Oracle Banking Installer - Property File Creation - Scheduler EMS Queue

No.	Name	Value
1	Incoming Dead Letter Queue Name	EMS_QUEUE_DLQ
2	Incoming backup Queue Name	EMS_QUEUE_BACK
3	Incoming Queue Connection Factory	EmsQcf
4	Secure Incoming Queue Connection	<input type="checkbox"/>
5	Incoming Queue Caller Id	
6	Incoming Queue Caller Password	
7	Outgoing Dead Letter Queue Name	EMS_QUEUE_DLQ
8	Outgoing Queue Connection Factory	EmsQcf
9	Secure Outgoing Queue Connection	<input type="checkbox"/>
10	Outgoing Queue Caller Id	
11	Outgoing Queue Caller Password	
12	Outgoing Queue Provider URL	t3://10.10.10.10:1010
13	Queue Principal	•••••
14	Queue Credential	•••••
15	Incoming Queue Name	EMS_INQUEUE
16	Outgoing Queue Name	EMS_OUTQUEUE
17	SFMS Incoming Queue	SFMS_INQUEUE
18	RTGS Incoming Queue	RTGS_INQUEUE
19	EMS Bulker Queue	BULKER_QUEUE

2. On the **Oracle FLEXCUBE Universal Installer - Property File Creation - Scheduler EMS Queue** screen, specify the fields.

For more information, refer the field description table.

Table 1-4 Property File Creation - Scheduler EMS Queue

Field	Description
Incoming Dead Letter Queue Name	By default 'EMS_QUEUE_DLQ' is set as the incoming dead letter queue name, retain the same.

Table 1-4 (Cont.) Property File Creation - Scheduler EMS Queue

Field	Description
Incoming backup Queue Name	By default ' EMS_QUEUE_BACK ' is set as incoming backup queue name, retain the same
Incoming Queue Connection Factory	Specify the name of the incoming connection factory to which EMS listens. You need to create this connection factory in the application server. For details on connection factory creation, follow the steps described for creation of notify connection factories. ' EmsQcf ' is given as default value for the incoming queue connection factory.
Secure Incoming Queue Connection	Check this box to indicate that it is a secured queue connection.
Incoming Queue Caller ID	Specify the caller ID for the secured queue connection.
Incoming Queue Caller Password	Specify the caller password for the secured queue connection.
Outgoing Dead Letter Queue Name	By default ' EMS_QUEUE_DLQ ' is set as outgoing dead letter queue name, retain the same.
Outgoing Queue Connection Factory	Specify the name of the outgoing connection factory to which EMS listens. You need to create this connection factory in the application server. For details on connection factory creation, follow the steps described for creation of notify connection factories. ' EmsQcf ' is given as default value for the outgoing queue connection factory.
Secure Outgoing Queue Connection	Check this box to indicate that it is a secured outgoing queue connection.
Outgoing Queue Caller ID	Specify the caller ID for the secured queue connection.
Outgoing Queue Caller Password	Specify the caller Password for the secured queue connection.
Outgoing Queue Provider URL	Specify the URL of the outgoing queue. In case EMS OUT MDB is to be configured to queue, you need to specify the URL for outgoing provider based on the application server. By default, the Installer displays the outgoing queue provider URL for Oracle WebLogic. This value is application server dependent. Refer the table Application Server - EMS Out Initial Context Factory for details of Outgoing Queue Provider URL to be used for different application servers.
Queue Principal	Specify the queue principal. If EMS OUT MDB has to be configured to queue, you need to specify the EMS out queue principal. This is the user name for the application server in which the queue is configured.
Queue Credential	Specify the queue credential. If EMS OUT MDB has to be configured to queue, you need to specify the EMS out queue credential. This is the password for the above user name created for application server in which the queue configured.
Incoming Queue Name	Specify the incoming queue name for which EMS is configured. By default EMS_INQUEUE is specified.
Outgoing Queue Name	Specify the outgoing queue name for which EMS is configured. By default EMS_OUTQUEUE is specified.

Table 1-4 (Cont.) Property File Creation - Scheduler EMS Queue

Field	Description
SFMS Incoming Queue	Specify the SFMS Incoming Queue for which EMS is configured. . By default SFMS_INQUEUE is specified.
RTGS Incoming Queue	Specify the RTGS incoming Queue for which EMS is configured. By default RTGS_INQUEUE is specified.
EMS Bulker Queue	Specify the Bulker Queue name. By default BULKER_QUEUE is specified, retain the same. So that in fcubs.properties file, EMS_BULKER_QUEUE field gets updated to ' BULKER_QUEUE ' value. Once you have specified the above details, click ' Next ' and system displays the next screen.

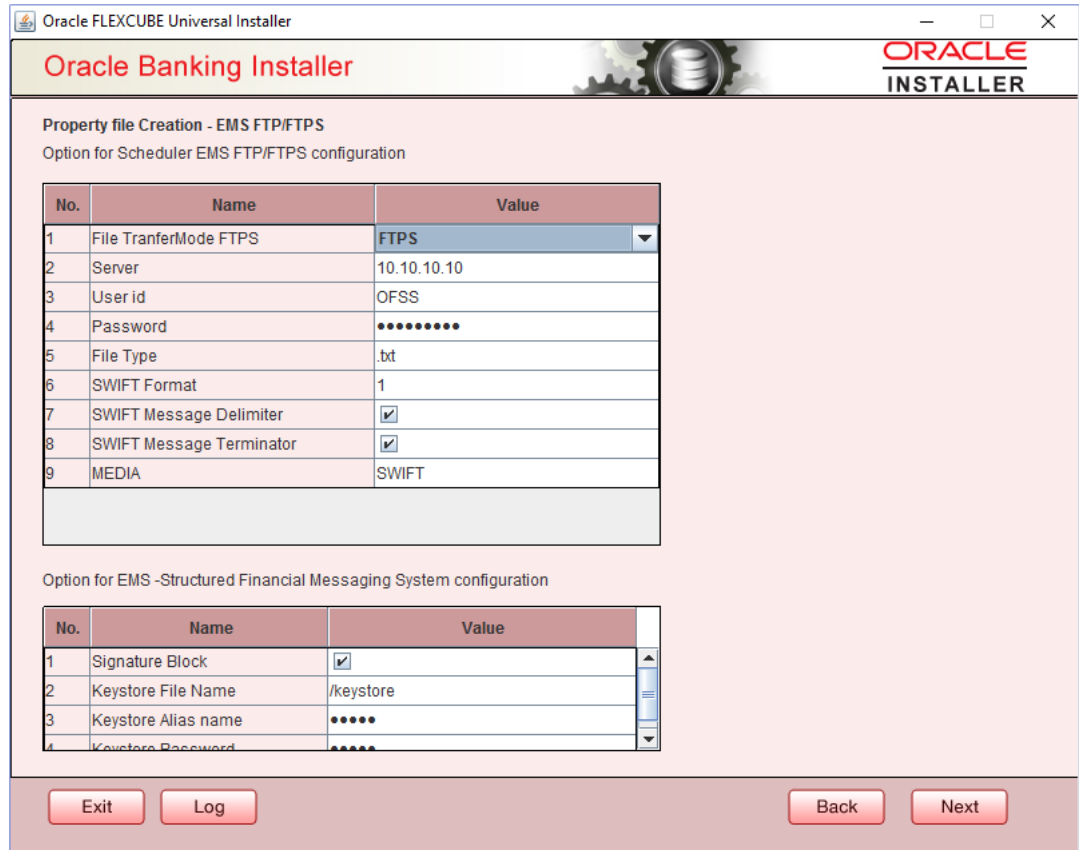
Application Server	EMS Out Initial Context Factory
Oracle WebLogic	t3://<ip_adress>:port For example: t3://10.10.10.10:1010 Here, 10.10.10.10 represents the local host and 1010 to the target server default port (AdminServer/ManagedServer).
IBM WebSphere	iiop://<ip_adress>:port For example: iiop://10.10.10.10:1010 Here, 1010 represents the default iiop port

1.2.7 Setting EMS FTP/FTPS Properties

This topic explains the EMS FTP/FTPS properties.

1. Click the **Next** button and the following screen is displayed. **Oracle Banking Installer - Property File Creation - EMS FTP/FTPS** screen is displayed.

Figure 1-6 Oracle Banking Installer - Property File Creation - EMS FTP/FTPS



2. On the **Oracle Banking Installer - Property File Creation - Scheduler EMS Queue** screen, specify the fields.
For more information, refer the field description table

Table 1-5 Property File Creation - EMS FTP/FTPS Configuration

Field	Description
Option for Scheduler EMS FTP/FTPS configuration	
File Transfer Mode FTPS	Specify the mode of transferring files to EMS. Enter one of the following: <ul style="list-style-type: none"> • FTPS (FTP over SSL) • SFTP(Secure FTP) • HTTP(Hyper Text Transfer Protocol) <div style="border: 1px solid #ccc; padding: 5px; margin-top: 10px;"> <p> Note: FTP is File Transfer Protocol.</p> </div>
Server	Specify the server IP address for the selected file transfer mode.
User ID	Specify the user ID to access the server of the file transfer mode.
Password	Specify the password to for the above user ID.
File Type	Specify the type of file that is transferred. By default, the Installer sets it as 'txt' .

Table 1-5 (Cont.) Property File Creation - EMS FTP/FTPS Configuration

Field	Description
SWIFT FORMAT	Specify the SWIFT format.
SWIFT Message Delimiter	Specify the character which is used as the message delimiter.
SWIFT Message Terminator	Specify the character which is used as the message terminator. Once you have specified the above details, Specify the EMS- Structured Financial Messaging System configuration details:
Option for EMS Structured Financial Messaging System configuration	
Signature Block	Check this box to enable signature block.
Keystore File Name	Specify the keystore file name.
Keystore Alias Name	Specify the keystore alias name.
Keystore Password	Specify the keystore password. Once you have specified the above details, click ' Next ' and system displays the next screen

- Once you have specified the above details, click the **Next** button and the system displays the next screen.

1.2.8 Setting Scheduler BIP/GI Upload Queue Properties

This topic explains the Scheduler BIP/GI Upload Queue Properties for the property file creation.

- Click the **Next** button and the following screen is displayed. **Oracle Banking Installer - Property File Creation - Scheduler BIP/GI Upload Queue** screen is displayed.

Figure 1-7 Oracle Banking Installer - Property File Creation - Scheduler BIP/GI Upload Queue

Oracle FLEXCUBE Universal Installer

Oracle Banking Installer ORACLE INSTALLER

Property File Creation - Scheduler BIP/GI Upload Queue

Option for configuring Scheduler BIP and BIP Advice report.

Bip Queue Name: INTERNAL_BIPREPORT_QUEUEE

Bip DeadLetter Queue Name: INTERNAL_BIP_QUEUE_DLQ

BipAdvice Queue Name: ERNAL_BIPADVREPORT_QUEUEE

BipAdvice DeadLetter Queue Name: RNAL_BIP_ADVICE_QUEUE_DLQ

Queue connection factory: BIPQCF

Secure Caller ID: []

Caller password: []

Option for configuring details for Scheduler GI Upload Queue

Queue Name: INTERNAL_GI_UPLOAD_QUEUEE

Dead Letter Queue Name: INTERNAL_GI_UPLOAD_DLQ

Queue connection factory: GI_UPLOAD_QCF

Secure Caller ID: []

Caller Password: []

Exit Log Back Next

2. Once you have specified the above details, click 'Next' and system displays the next screen.

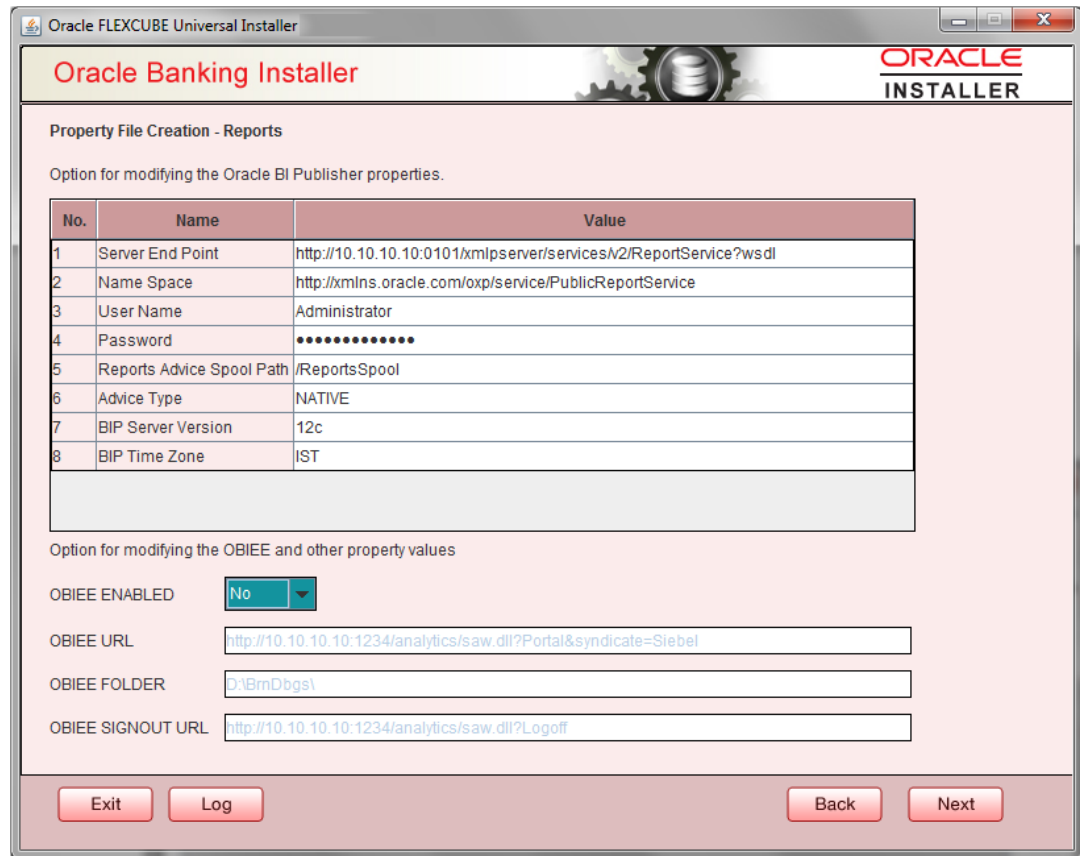
If scheduler is not selected, you will be skipped to the next screen directly from the OFTW details screen.

1.2.9 Setting Reports details

This topic explains the BI Publisher properties.

1. Click the **Next** button and the following screen is displayed. **Oracle Banking Installer - Property File Creation - Reports** screen is displayed.

Figure 1-8 Oracle Banking Installer - Property File Creation - Reports



2. On the **Oracle FLEXCUBE Universal Installer - Property File Creation - Reports** screen, specify the Publisher Properties fields. This table will be enabled only if REPORTS_ENABLED plug-in is selected.

For more information, refer the field description table.

Table 1-6 Property File Creation - Reports - BI Publisher Properties.

Field	Description
Server End Point	Specify the BIP end point. http://whf00blq:9502/xmlpserver/services/v2/ReportService?wsdl. However, you need to change the IP and port where BIP Application is installed. WSDL URL gets modified based on "BIP Server Version" on selecting the required version from the dropdown.
Name Space	Specify the BIP name space. By default, the installer displays 'http://xmlns.oracle.com/oxp/service/PublicReportService'.
User Name	Specify the BIP user name. By default, the Installer displays ' Administrator '.
Password	Specify the password for the above user name. By default, the Installer sets it as ' Administrator '.
Reports Spool Path	Specify the reports spool path. By default, the Installer displays / ReportsSpool

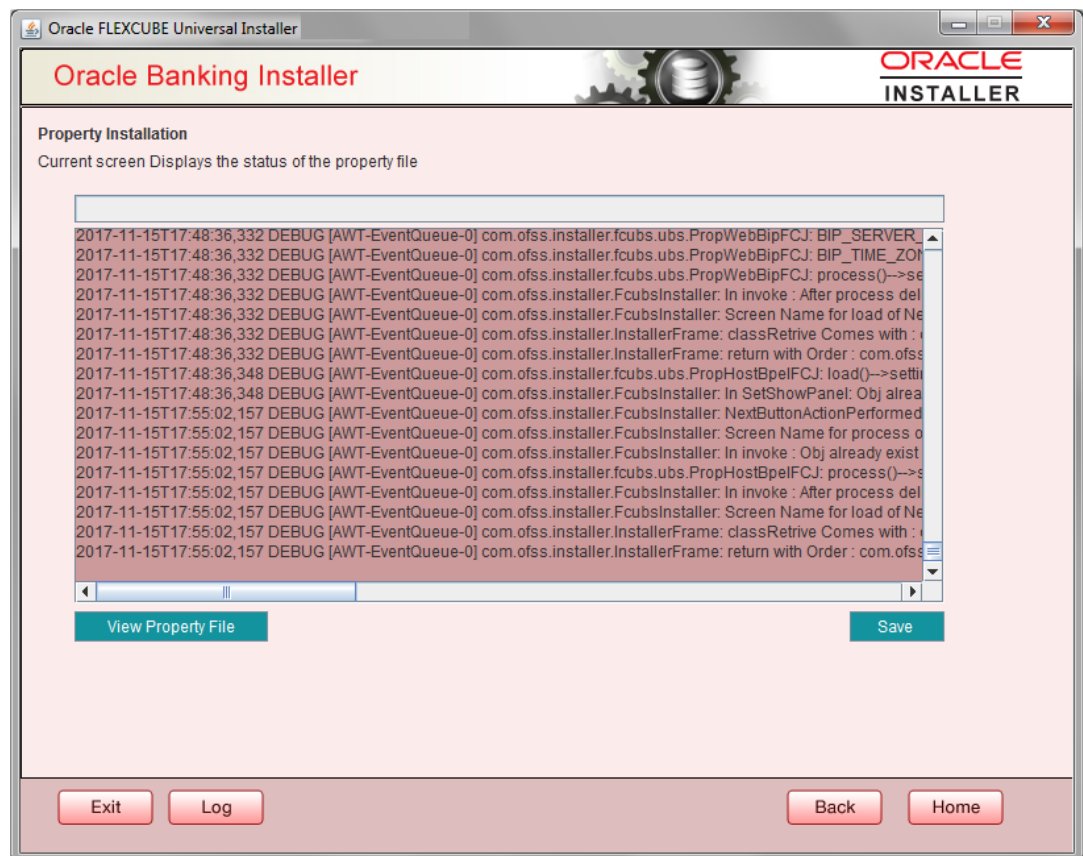
Table 1-6 (Cont.) Property File Creation - Reports - BI Publisher Properties.

Field	Description
Advice Type	Specify the advice type. You can choose one of the following: <ul style="list-style-type: none"> NATIVE – This advice type is used for generating advices in text format BIP – This advice type is used for generating advices in PDF format.
BIP Server Version	Specify the qualified BIP server version. You can select the appropriate one from the adjoining drop-down list.
BIP Time Zone	Specify the time zone of the BIP server. OBIEE properties will be always shown.
OBIEE Enabled	Chose Yes/No from the drop down box.
OBIEE URL	Provide OBIEE URL path.
OBIEE Folder	Provide a folder path at the application server level.
OBIEE Signout URL	Provide OBIEE signout URL.

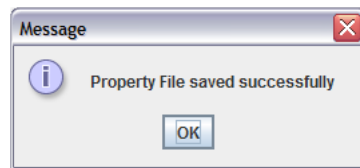
1.2.10 Saving Property File

After completing all the required settings explained above, you need to save the property file.

- Save the property file.



You can view the status of property file creation in the above screen. Once the file is saved, the installer displays the following message:



This completes the properties file creation. Along with the property file creation, env.properties file is also generated in \INSTALLER\SOFT\GUI\logs path and will be automatically copied to \INSTALLER\SOFT\logs folder.

 **Note:**

Env.properties file parameters gets updated during every property file creation (like OBTF, Gateway, Scheduler etc). After Property file creation, proceed with respective EAR build and then proceed with other components property file creations and build.