

Oracle® Banking Treasury Management Installer Database Setup



Release 14.7.4.0.0
G10907-01
June 2024

The Oracle logo, consisting of a solid red square with the word "ORACLE" in white, uppercase, sans-serif font centered within it.

ORACLE®

Oracle Banking Treasury Management Installer Database Setup, Release 14.7.4.0.0

G10907-01

Copyright © 2020, 2024, Oracle and/or its affiliates.

This software and related documentation are provided under a license agreement containing restrictions on use and disclosure and are protected by intellectual property laws. Except as expressly permitted in your license agreement or allowed by law, you may not use, copy, reproduce, translate, broadcast, modify, license, transmit, distribute, exhibit, perform, publish, or display any part, in any form, or by any means. Reverse engineering, disassembly, or decompilation of this software, unless required by law for interoperability, is prohibited.

The information contained herein is subject to change without notice and is not warranted to be error-free. If you find any errors, please report them to us in writing.

If this is software, software documentation, data (as defined in the Federal Acquisition Regulation), or related documentation that is delivered to the U.S. Government or anyone licensing it on behalf of the U.S. Government, then the following notice is applicable:

U.S. GOVERNMENT END USERS: Oracle programs (including any operating system, integrated software, any programs embedded, installed, or activated on delivered hardware, and modifications of such programs) and Oracle computer documentation or other Oracle data delivered to or accessed by U.S. Government end users are "commercial computer software," "commercial computer software documentation," or "limited rights data" pursuant to the applicable Federal Acquisition Regulation and agency-specific supplemental regulations. As such, the use, reproduction, duplication, release, display, disclosure, modification, preparation of derivative works, and/or adaptation of i) Oracle programs (including any operating system, integrated software, any programs embedded, installed, or activated on delivered hardware, and modifications of such programs), ii) Oracle computer documentation and/or iii) other Oracle data, is subject to the rights and limitations specified in the license contained in the applicable contract. The terms governing the U.S. Government's use of Oracle cloud services are defined by the applicable contract for such services. No other rights are granted to the U.S. Government.

This software or hardware is developed for general use in a variety of information management applications. It is not developed or intended for use in any inherently dangerous applications, including applications that may create a risk of personal injury. If you use this software or hardware in dangerous applications, then you shall be responsible to take all appropriate fail-safe, backup, redundancy, and other measures to ensure its safe use. Oracle Corporation and its affiliates disclaim any liability for any damages caused by use of this software or hardware in dangerous applications.

Oracle®, Java, MySQL, and NetSuite are registered trademarks of Oracle and/or its affiliates. Other names may be trademarks of their respective owners.

Intel and Intel Inside are trademarks or registered trademarks of Intel Corporation. All SPARC trademarks are used under license and are trademarks or registered trademarks of SPARC International, Inc. AMD, Epyc, and the AMD logo are trademarks or registered trademarks of Advanced Micro Devices. UNIX is a registered trademark of The Open Group.

This software or hardware and documentation may provide access to or information about content, products, and services from third parties. Oracle Corporation and its affiliates are not responsible for and expressly disclaim all warranties of any kind with respect to third-party content, products, and services unless otherwise set forth in an applicable agreement between you and Oracle. Oracle Corporation and its affiliates will not be responsible for any loss, costs, or damages incurred due to your access to or use of third-party content, products, or services, except as set forth in an applicable agreement between you and Oracle.

Contents

Preface

Audience	iv
Acronyms and Abbreviations	iv
Related Resources	iv

1 Installing Oracle Banking Treasury Management Database

1.1	Creating Schema by Importing Full Dump	1-1
1.2	Creating Schema from Shipment Media	1-1
1.2.1	Backend Setup using Silent Installer	1-1
1.2.1.1	Invalid Recompilation script	1-2
1.2.2	Basic Setup Using GUI Installer	1-2

Preface

This guide helps the user to configure the Oracle Banking Treasury Management database.

- [Audience](#)
- [Acronyms and Abbreviations](#)
- [Related Resources](#)

Audience

This guide is intended for anyone responsible for installing Oracle Banking Application.

Acronyms and Abbreviations

The acronyms and abbreviations are listed in this below table:

Table 1 Acronyms and Abbreviations

Abbreviations or Acronyms	Definition
DV	Derivatives
ETD	Exchange Traded Derivatives
FX	Foreign Exchange
MM	Money Market
OBTR	Oracle Banking Treasury Management
ODT	Open Development Tool
OT	Over the Counter Options
SE	Securities
SR	Securities Repo

Related Resources

For more information, see these Oracle Banking Treasury Management resources:

- *Oracle Banking Treasury Management Release Notes*
- *Oracle Banking Treasury Management Installer Index*
- *Oracle Banking Treasury Management Installer Prerequisite*

1

Installing Oracle Banking Treasury Management Database

Oracle Banking Treasury Management database can be installed in one of the following methods.

- Import full dump – Import the Oracle Banking Treasury Management objects into an empty schema using full dump. This is a manual activity.
- From shipment media – Load the shipment media objects into an empty schema using Installer.

These methods are discussed in detail under the following heads.

This topics has following sub-topics:

- [Creating Schema by Importing Full Dump](#)
- [Creating Schema from Shipment Media](#)

1.1 Creating Schema by Importing Full Dump

Under this method, manually import the Oracle Banking Treasury Management DMP file into the Oracle Banking Treasury Management schema. This are done using the following command:

```
$impdp user_name/password directory=dir_name  
dumpfile=dmp_file_name.dmp logfile=dmp_file_name.log  
remap_schema=from_schema_name:to_schema_name  
remap_tablespace=from_tablespace_name:to_tablespace_name  
transform=OID:n
```

1.2 Creating Schema from Shipment Media

Under this method, you need to create the schema from the shipment media.

This topic has the following sub-topics:

- [Backend Setup using Silent Installer](#)
- [Basic Setup Using GUI Installer](#)

1.2.1 Backend Setup using Silent Installer

Backend Setup has to be done using Silent Installer. DDL Compilation, Object Compilation, and Static Data Load will be taken care of as part of Backend Setup.

Before loading objects into the schema, **fcubs.properties** file creation must be performed with the required database details using the GUI installer (Refer to Treasury Management Installer Property File Creation document). After the property file is created, the **env.properties** file present in `INSTALLER/SOFT/GUI/logs/` directory is automatically updated with the details provided while creating the property file.

The **env.properties** file present in `INSTALLER/SOFT/GUI/logs/` will be automatically copied to `INSTALLER/SOFT/logs/` directory as part of property file creation. Details from this **env.properties** are taken for further steps.

Run the <Product Processor> **DBCompileRun.bat** from the `INSTALLER/SOFT` directory. DDL Compilation, Object Compilation, and Static Data load will be done.

First load SMS objects first and then OBTR objects. i.e.

1. Run **SMSDBCompileRun.bat** in windows (**SMSDBCompileRun.sh** in Linux).

 **Note:**

Before running DB Compilation of any sort, please make sure that System Date Time format and language are provided as English, or otherwise DB Compilation might fail due to improper log names.

2. After SMS object loading is completed, then initiate OBTR compilation Run **TRDBCompileRun.bat** in windows (**TRDBCompileRun.sh** in Linux).

Check for the Invalid Count and make sure that the Invalid count is '0'. Run Invalid Recompilation script ([Invalid Recompilation script](#)), if required.

This is for KERNEL as well as cluster objects in the DB schema.

- [Invalid Recompilation script](#)

1.2.1.1 Invalid Recompilation script

Purpose

Check the invalid count.

Syntax

```
EXEC UTL_RECOMP.recomp_parallel(&THREADS,&SCHEMA');
```

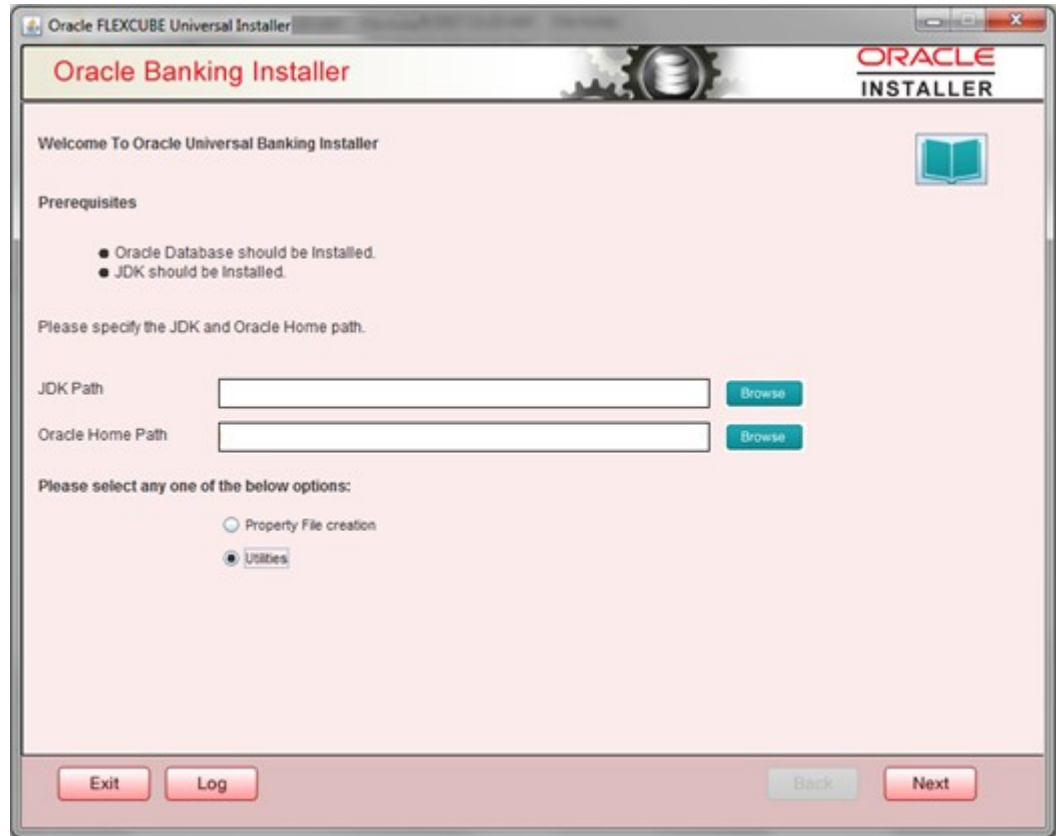
1.2.2 Basic Setup Using GUI Installer

The steps to load objects from the shipment media are given below:

1. Double-click the **FCUBSInstaller.bat** batch file to launch Oracle Banking Treasury Management Installer. Select the Utilities option and click the **Next** button.

Oracle Flexcube Universal Installer - Welcome screen is displayed.

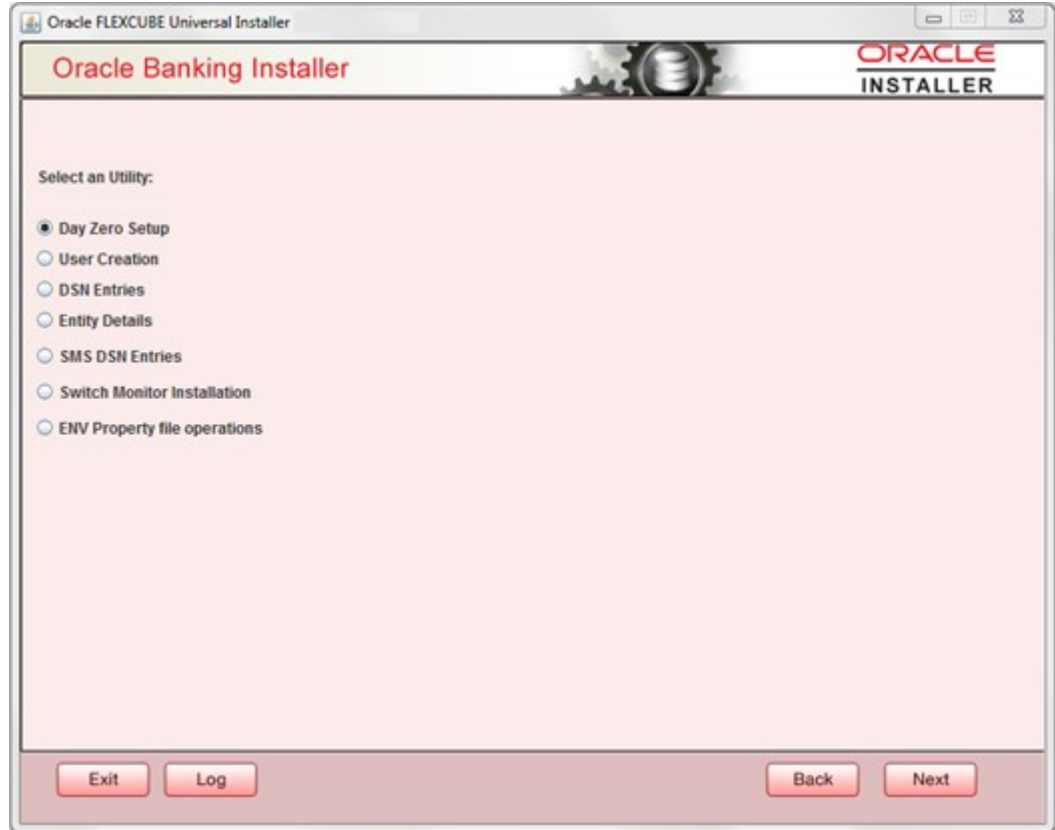
Figure 1-1 Oracle Flexcube Universal Installer - Welcome



2. Select **Day Zero Setup** in Utility Screen and click the **Next** button.

Oracle FLEXCUBE Universal Installer - Select an Utility sub-screen is displayed.

Figure 1-2 Oracle FLEXCUBE Universal Installer - Select an Utility



3. Click the **Next** button on the below screen. Schema details to be entered is displayed:
Oracle FLEXCUBE Universal Installer - Database Installation sub-screen is displayed.

Figure 1-3 Oracle FLEXCUBE Universal Installer - Database Installation



4. On the **Oracle FLEXCUBE Universal Installer - Database Installation** screen, specify the schema details.

For more information, refer to the field description table.

Table 1-1 Database Installation - Schema

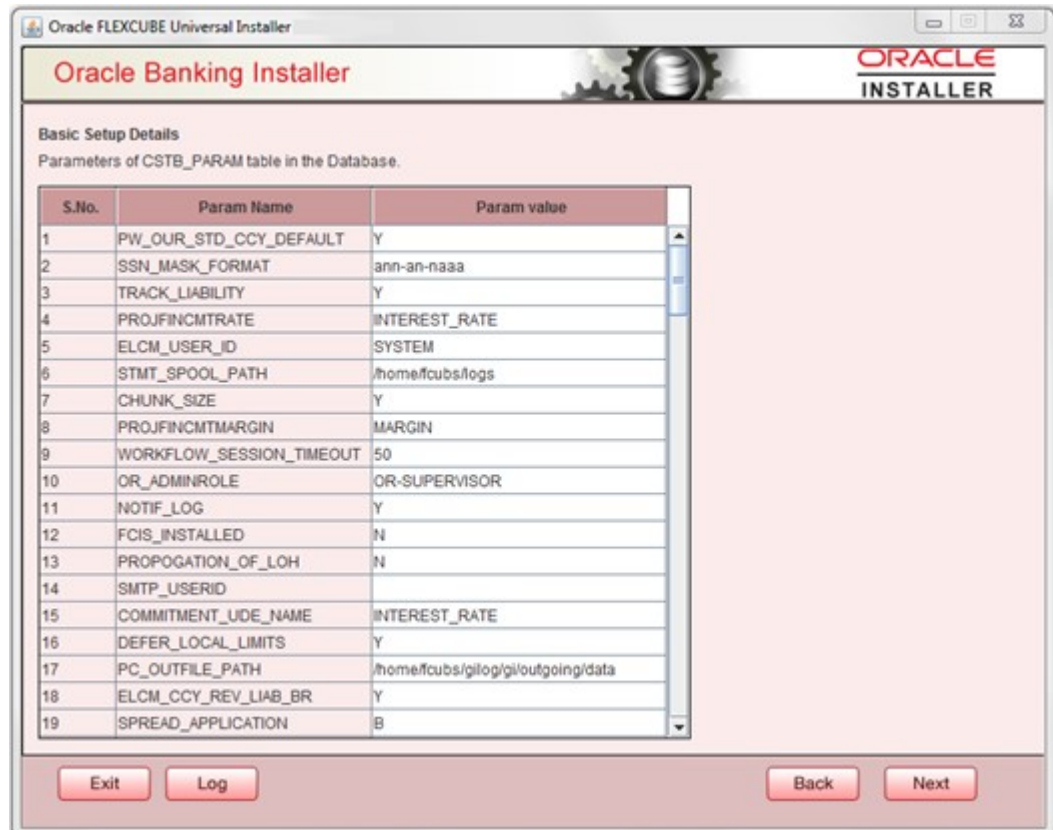
Fields	Description
Username	Specify the user name to access the schema.
Password	Enter the schema password.
Service Name	Provide service name of database.
IP Address	Specify the IP address of the system where the database schema is installed. <div style="border: 1px solid #0070C0; padding: 5px; background-color: #E6F2FF;"> <p> Note: IP Address should be the same as mentioned in the TNSnames.ora.</p> </div>
Port	Specify the port number.
TNS Connect Descriptor	Specify the TNS Connect Descriptor.

- a. Here Entity Schema is mandatory; at least a minimum of one entry should be provided.
- b. The Entity Id value is default i.e., **ENTITY_ID1** for the first entry.

- c. Provide the JNDI Name for the **ENTITY_ID1**. By default the jndi name is jdbc/fcjdevDS.
 - d. Give the Schema Details for the Entity1.
 - e. Here Compile In All Entities Field is **N**. (As using the Single Entity Concept).
5. Click the **Next** button.

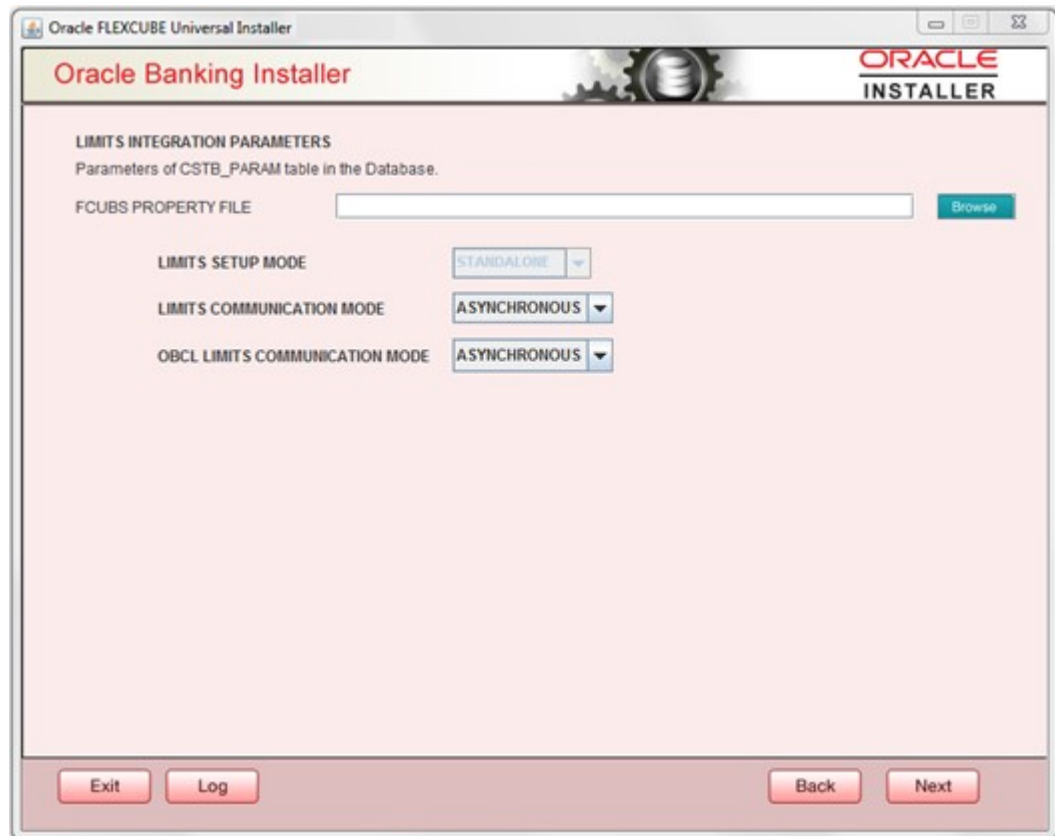
Oracle FLEXCUBE Universal Installer - Basic Setup Details screen is displayed.

Figure 1-4 Oracle FLEXCUBE Universal Installer - Basic Setup Details



6. The screen displays basic setup details for table CSTB_PARAM.
- a. Here Oracle directory name(present in all_directories table in the schema) must be added for WORK_AREA and TRACE_AREA. Oracle directory name must be added for other required parameters also.
 - b. Oracle directory creation in the schema can be done as below :
Create or replace directory dir_name as **directory_path**.
7. Click on the Next button to display the **LIMITS INTEGRATION PARAMETERS** screen.
- Oracle FLEXCUBE Universal Installer - LIMITS INTEGRATION PARAMETERS** screen is displayed.

Figure 1-5 Oracle FLEXCUBE Universal Installer - LIMITS INTEGRATION PARAMETERS



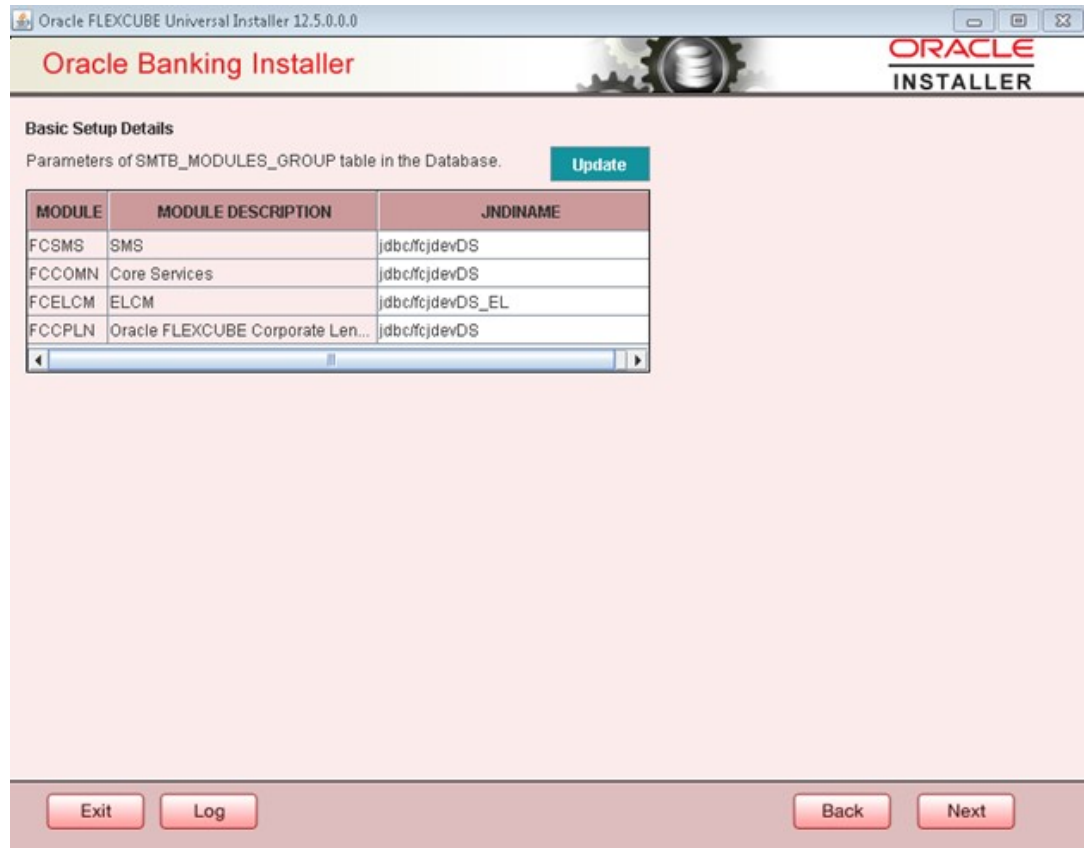
8. The **Limits Integration Parameters** will be set based on values read from **fcubs.properties** file browsed.
9. Click on the **Next** button. The screen displays parameters for table SMTB_MODULES_GROUP.

If any change is required in the JNDI name, edit the same and click on **Update**.

 **Note:**

SMTB_MODULES_GROUP for FCELCM (Oracle ELCM) with the JNDI name '_EL.' For example, if the **ENTITY_ID** JNDI name is **jdbc/fcdevDS**, then you need to update the JNDI name **jdbc/fcdevDS_EL**.

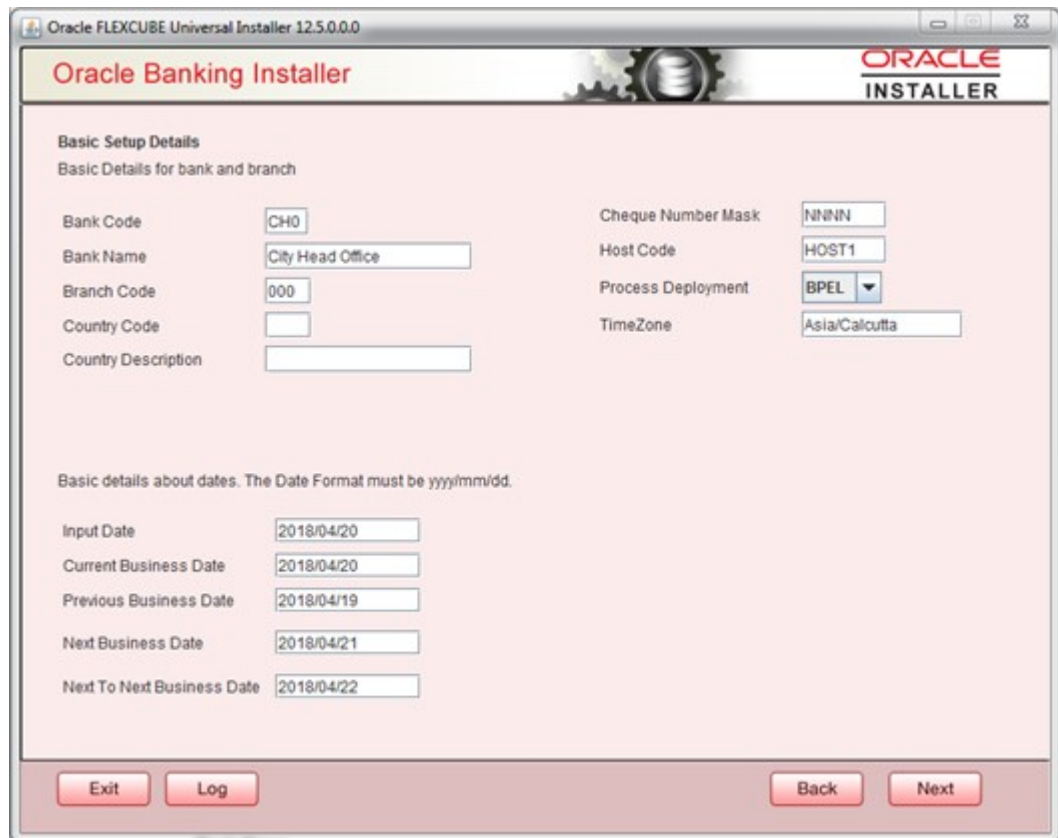
Figure 1-6 Oracle FLEXCUBE Universal Installer - Basic Setup Details - SMTB_MODULES_GROUP



10. Click the **Next** button.

Oracle FLEXCUBE Universal Installer - Basic Setup Details - Bank and Branch screen is displayed.

Figure 1-7 Oracle FLEXCUBE Universal Installer - Basic Setup Details - Bank and Branch



11. On the **Oracle FLEXCUBE Universal Installer - Basic Setup Details - Bank and Branch** screen, specify the bank, branch and date details.

For more information, refer to the field description table.

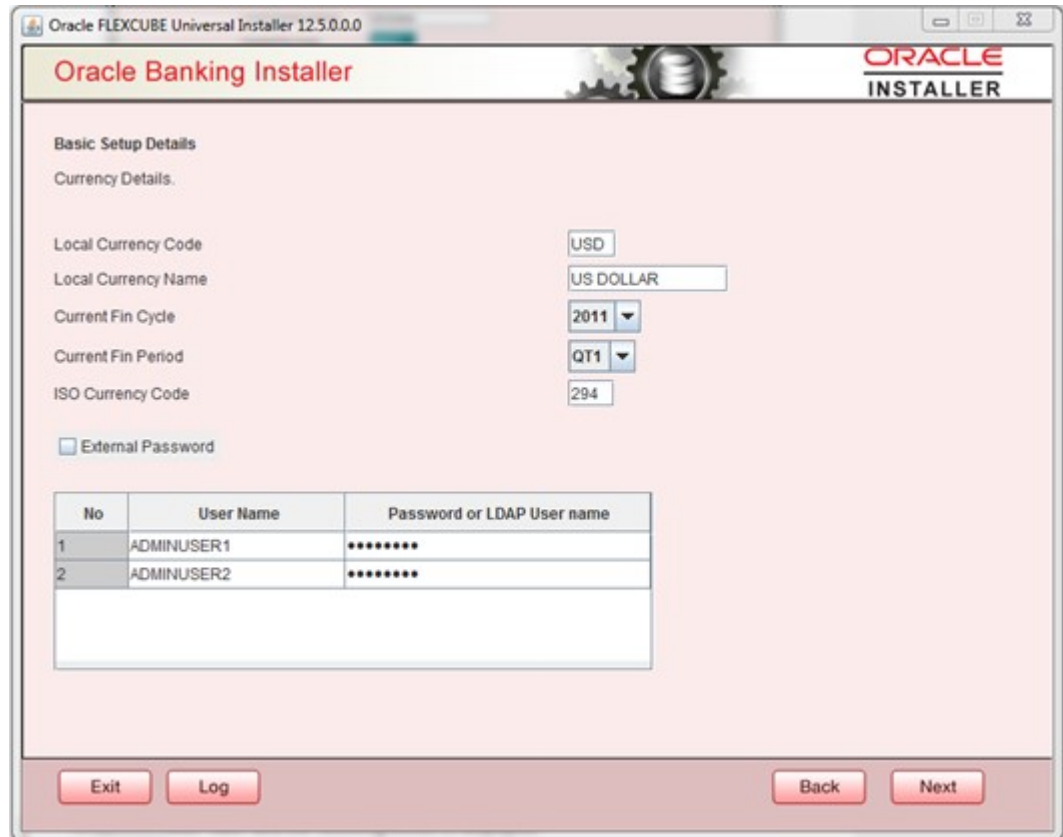
Table 1-2 Basic Setup Details - Bank, Branch and Dates

Fields	Description
Bank Code	Enter the bank code.
Bank Name	Enter the bank name.
Branch Code	Enter the branch code.
Country Code	Enter the Country code.
Country Description	Enter the Country Description.
Cheque Number Mask	Enter the Cheque Number Mask.
Process Deployment	Choose mode of process deployment between BPEL or BPMN
Input Date	Enter the input date.
Current Business Date	Enter the current business date.
Previous Business Date	Enter the previous business date.
Next Business Date	Enter the next business date.
Next to Next Business Date	Enter the next to next business date.

12. Click the **Next** button.

Oracle FLEXCUBE Universal Installer - Basic Setup Details - Currency Details screen is displayed.

Figure 1-8 Oracle FLEXCUBE Universal Installer - Basic Setup Details - Currency Details




- On the Oracle FLEXCUBE Universal Installer - Basic Setup Details - Currency Details screen, specify the fields.

For more information, refer to the fields description table.

Table 1-3 Basic Setup Details - Currency Details

Fields	Description
Local Currency Code	Enter Local Currency Code.
Local Currency Name	Enter Local Currency Name.
Current Fin Cycle	Enter Current Financial Cycle(any year from 2011 to 2050)
Current Fin Period	Enter Current Financial Period(QT1 to QT4,M01 to M12).
ISO Currency Code	Enter ISO Currency Code. The screen also displays basic setup details for creating a user in Treasury. The creation of a SYSTEM user is mandatory for payments processing. It needs to be created as part of a static data setup.
External Password	Check this box to specify the external password.

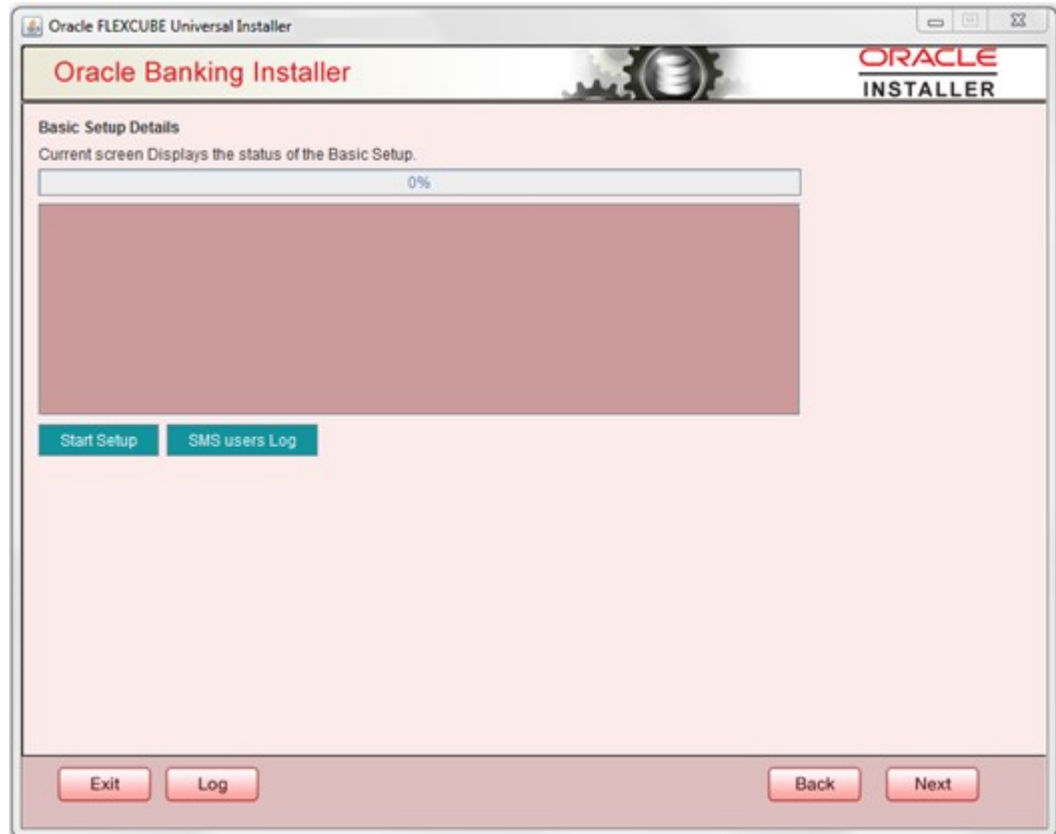
Table 1-3 (Cont.) Basic Setup Details - Currency Details

Fields	Description
User Name	Displays the user name. Change the user name if required.
Password or LDAP User Name	<p>Specify the password and it is mandatory. You can use the following characters in the password:</p> <ul style="list-style-type: none"> • Alphabets in uppercase • Alphabets in lowercase • Numerals <div style="border: 1px solid #0070C0; background-color: #E6F2FF; padding: 10px; margin-top: 10px;"> <p> Note:</p> <p>You cannot use ‘_’ (underscore) in the password.</p> </div>

14. Click the **Next** button.

Oracle FLEXCUBE Universal Installer - Basic Setup Details - Status screen is displayed.

Figure 1-9 Oracle FLEXCUBE Universal Installer - Basic Setup Details - Status



15. Click the **Start Setup** button to compile the entries. On completion, the below screen will be seen. User created logs can be viewed by clicking the **SMS users Log** button.

Oracle FLEXCUBE Universal Installer - Basic Setup Details - Status Completed screen is displayed.

Figure 1-10 Oracle FLEXCUBE Universal Installer - Basic Setup Details - Status Completed

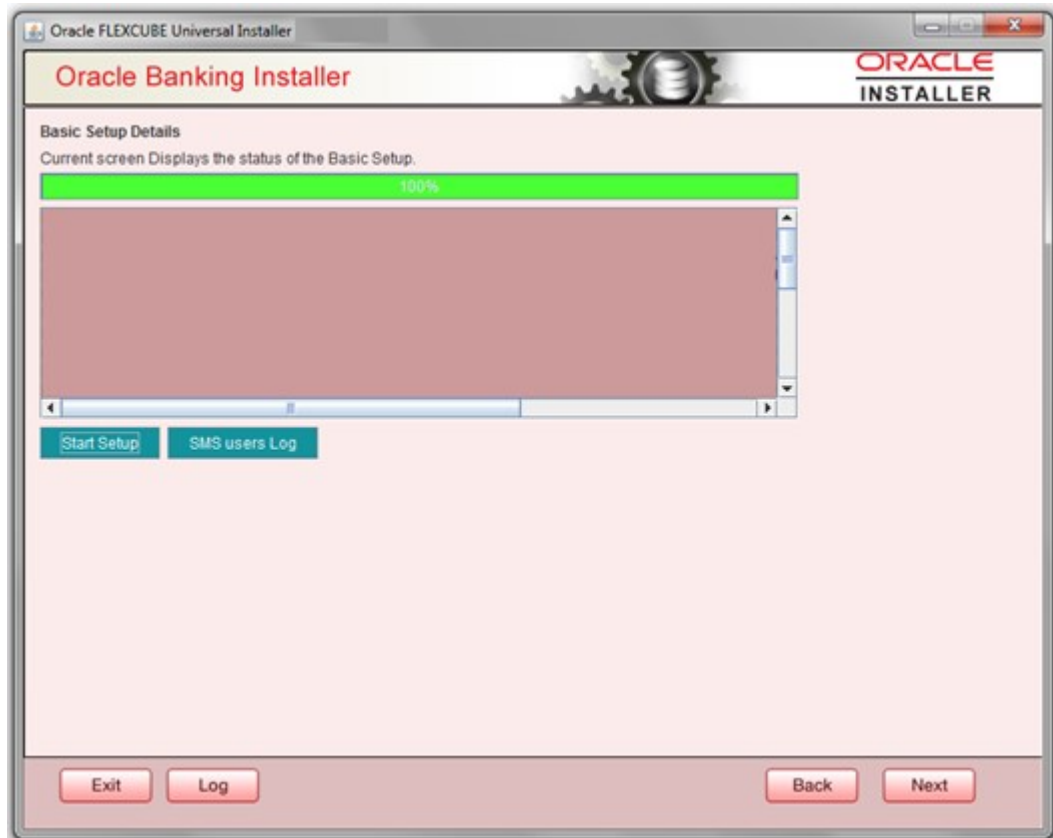


Figure 1-11 Message

