

# Oracle® Banking Treasury Management Installer Property File



Release 14.7.4.0.0

G10906-01

June 2024

The Oracle logo, consisting of a solid red square with the word "ORACLE" in white, uppercase, sans-serif font centered within it.

ORACLE®

Oracle Banking Treasury Management Installer Property File, Release 14.7.4.0.0

G10906-01

Copyright © 2020, 2024, Oracle and/or its affiliates.

This software and related documentation are provided under a license agreement containing restrictions on use and disclosure and are protected by intellectual property laws. Except as expressly permitted in your license agreement or allowed by law, you may not use, copy, reproduce, translate, broadcast, modify, license, transmit, distribute, exhibit, perform, publish, or display any part, in any form, or by any means. Reverse engineering, disassembly, or decompilation of this software, unless required by law for interoperability, is prohibited.

The information contained herein is subject to change without notice and is not warranted to be error-free. If you find any errors, please report them to us in writing.

If this is software, software documentation, data (as defined in the Federal Acquisition Regulation), or related documentation that is delivered to the U.S. Government or anyone licensing it on behalf of the U.S. Government, then the following notice is applicable:

U.S. GOVERNMENT END USERS: Oracle programs (including any operating system, integrated software, any programs embedded, installed, or activated on delivered hardware, and modifications of such programs) and Oracle computer documentation or other Oracle data delivered to or accessed by U.S. Government end users are "commercial computer software," "commercial computer software documentation," or "limited rights data" pursuant to the applicable Federal Acquisition Regulation and agency-specific supplemental regulations. As such, the use, reproduction, duplication, release, display, disclosure, modification, preparation of derivative works, and/or adaptation of i) Oracle programs (including any operating system, integrated software, any programs embedded, installed, or activated on delivered hardware, and modifications of such programs), ii) Oracle computer documentation and/or iii) other Oracle data, is subject to the rights and limitations specified in the license contained in the applicable contract. The terms governing the U.S. Government's use of Oracle cloud services are defined by the applicable contract for such services. No other rights are granted to the U.S. Government.

This software or hardware is developed for general use in a variety of information management applications. It is not developed or intended for use in any inherently dangerous applications, including applications that may create a risk of personal injury. If you use this software or hardware in dangerous applications, then you shall be responsible to take all appropriate fail-safe, backup, redundancy, and other measures to ensure its safe use. Oracle Corporation and its affiliates disclaim any liability for any damages caused by use of this software or hardware in dangerous applications.

Oracle®, Java, MySQL, and NetSuite are registered trademarks of Oracle and/or its affiliates. Other names may be trademarks of their respective owners.

Intel and Intel Inside are trademarks or registered trademarks of Intel Corporation. All SPARC trademarks are used under license and are trademarks or registered trademarks of SPARC International, Inc. AMD, Epyc, and the AMD logo are trademarks or registered trademarks of Advanced Micro Devices. UNIX is a registered trademark of The Open Group.

This software or hardware and documentation may provide access to or information about content, products, and services from third parties. Oracle Corporation and its affiliates are not responsible for and expressly disclaim all warranties of any kind with respect to third-party content, products, and services unless otherwise set forth in an applicable agreement between you and Oracle. Oracle Corporation and its affiliates will not be responsible for any loss, costs, or damages incurred due to your access to or use of third-party content, products, or services, except as set forth in an applicable agreement between you and Oracle.

# Contents

## Preface

---

Audience	iv
Acronyms and Abbreviations	iv
Related Resources	v

## 1 Create Installer Property File

---

1.1 Create Property File	1-1
1.2 Custom Installation	1-11
1.3 Setting General Properties	1-11
1.4 Setting Single Sign on	1-15
1.5 Setting SMTPS/DMS details	1-18
1.6 Configuring Scheduler	1-20
1.7 Setting Scheduler EMS Properties	1-23
1.8 Setting EMS FTP/FTPS Properties	1-25
1.8.1 Setting Scheduler GI Upload Queue Properties	1-27
1.9 Setting Reports details	1-27
1.10 Saving Property File	1-28

## Index

---

# Preface

This manual explains the steps to create property file using Installer Application. While creating this property file, the environment property file also gets generated.

The images used in the documentation are of illustration purpose and need to be used only for reference.

This preface has the following topics:

- [Audience](#)
- [Acronyms and Abbreviations](#)
- [Related Resources](#)

## Audience

This guide is primarily intended for developers and third party or vendor software's. Some information may be relevant to IT decision makers and users of the application are also included. Readers are assumed to possess basic operating system, network, and system administration skills with awareness of vendor/third-party software's and knowledge of Oracle Banking Treasury Management.

## Acronyms and Abbreviations

The acronyms and abbreviations are listed in this below table:

**Table 1 Acronyms and Abbreviations**

Abbreviations or Acronyms	Definition
DV	Derivatives
DMS	Document Management System
EAR	Enterprise Archive
ETD	Exchange Traded Derivatives
FX	Foreign Exchange
FTPS	FTP over SSL
FCUBS	Oracle FLEXCUBE Universal Banking
GUI	Graphical User Interface
HTTP	Hyper Text Transfer Protocol
JDBC	Java Database Connectivity
LDAP	Lightweight Directory Access Protocol
MSAD	Microsoft Active Directory

**Table 1 (Cont.) Acronyms and Abbreviations**

Abbreviations or Acronyms	Definition
MM	Money Market
OBTR	Oracle Banking Treasury Management
OT	Over the Counter Options
SE	Securities
SFTP	Secure FTP
SMS	Security Management System
SR	Securities Repo
SSO	Single sign-on

## Related Resources

For more information, see these Oracle Banking Treasury Management resources:

- *Oracle Banking Treasury Management Release Notes*
- *Oracle Banking Treasury Management Installer Index*
- *Oracle Banking Treasury Management Installer Prerequisite*

# 1

## Create Installer Property File

This guide explains the steps to create property file for Oracle Banking Treasury Management. While creating this property file, the environment property file also gets generated.

This topic contains following sub-topics:

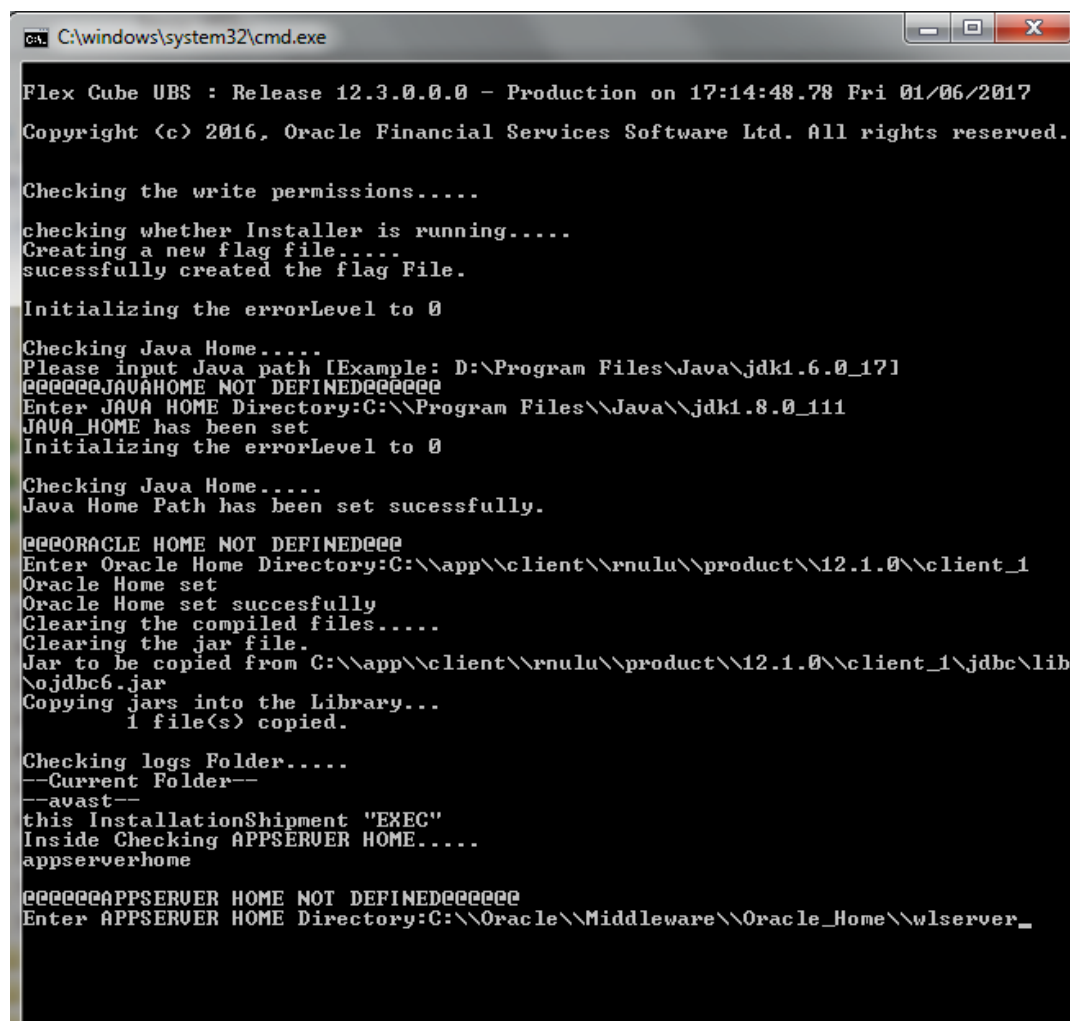
- [Create Property File](#)
- [Custom Installation](#)
- [Setting General Properties](#)
- [Setting Single Sign on](#)
- [Setting SMTPS/DMS details](#)
- [Configuring Scheduler](#)
- [Setting Scheduler EMS Properties](#)
- [Setting EMS FTP/FTPS Properties](#)
- [Setting Reports details](#)
- [Saving Property File](#)

### 1.1 Create Property File

To create the property file, follow the steps given below:

1. Launch the installer, that is, **FCUBSInstaller.bat** (for Windows), and **FCUBSInstaller.sh**(for Linux, bash shell recommended ). These files are available in INSTALLER/SOFT/GUI.

Figure 1-1 Command Prompt



```
C:\windows\system32\cmd.exe
Flex Cube UBS : Release 12.3.0.0.0 - Production on 17:14:48.78 Fri 01/06/2017
Copyright (c) 2016, Oracle Financial Services Software Ltd. All rights reserved.

Checking the write permissions.....
checking whether Installer is running.....
Creating a new flag file.....
sucessfully created the flag File.

Initializing the errorLevel to 0

Checking Java Home.....
Please input Java path [Example: D:\Program Files\Java\jdk1.6.0_17]
@@@@@JAVAHOME NOT DEFINED@@@@@
Enter JAVA HOME Directory:C:\Program Files\Java\jdk1.8.0_111
JAVA_HOME has been set
Initializing the errorLevel to 0

Checking Java Home.....
Java Home Path has been set sucessfully.

@@@@ORACLE HOME NOT DEFINED@@@
Enter Oracle Home Directory:C:\app\client\rnulu\product\12.1.0\client_1
Oracle Home set
Oracle Home set sucesfully
Clearing the compiled files.....
Clearing the jar file.
Jar to be copied from C:\app\client\rnulu\product\12.1.0\client_1\jdbc\lib
\ojdbc6.jar
Copying jars into the Library...
    1 file(s) copied.

Checking logs Folder.....
--Current Folder--
--avast--
this InstallationShipment "EXEC"
Inside Checking APPSERVER HOME.....
appserverhome

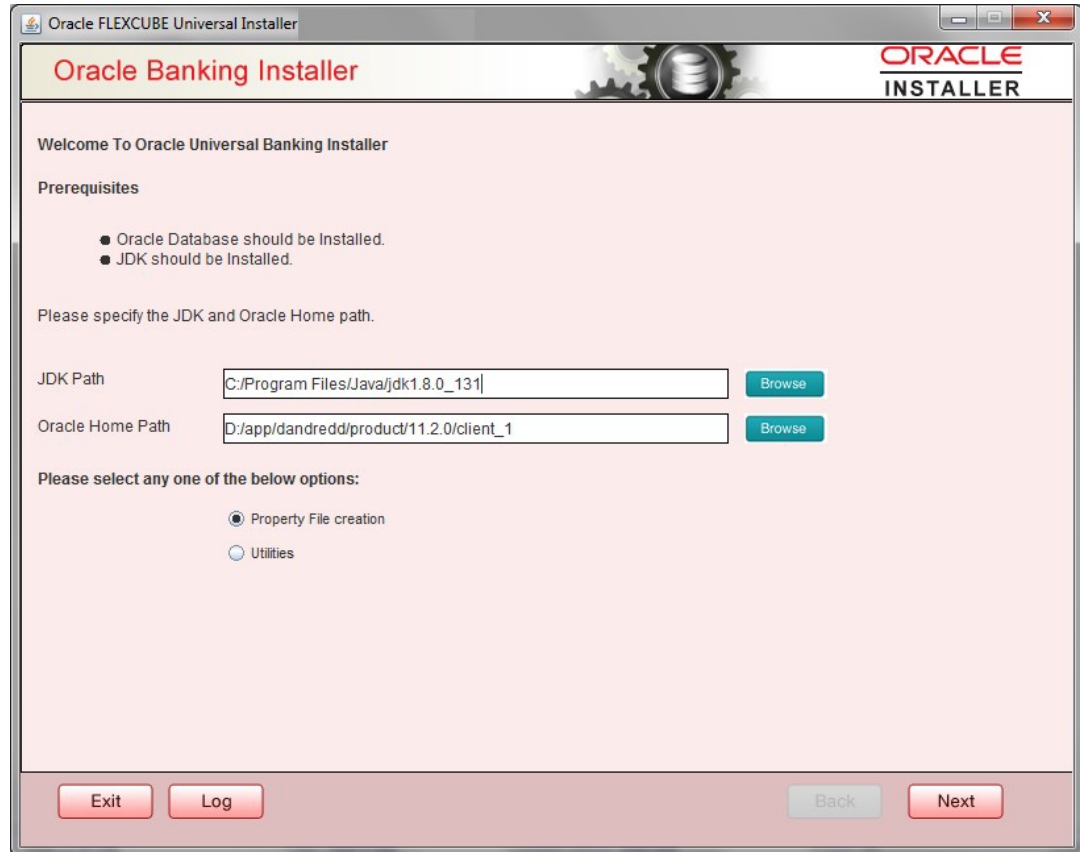
@@@@@APPSEVER HOME NOT DEFINED@@@@@
Enter APPSEVER HOME Directory:C:\Oracle\Middleware\Oracle_Home\wlserver_
```

In the first screen, provide the following details:

- a. **JAVA HOME PATH** - Provide the JDK home path with the latest version.
- b. **ORACLE HOME PATH** - Provide the Oracle 12C Client Path.
- c. **APP SERVER HOME PATH** - Provide the app server home path.

After providing these details, INSTALLER-GUI gets started. And follow the below details. Ensure the Pre-requisites are available.

**Figure 1-2** Installer GUI



Enter the following details:

- **JDK Path** - Maintain home folder path of JDK. The JAVA HOME path given in previous screen gets defaulted.
- **Oracle Home** - Maintain home folder path of Oracle Database Client. The ORACLE HOME path given in previous screen gets defaulted.

Select one of the radio buttons:

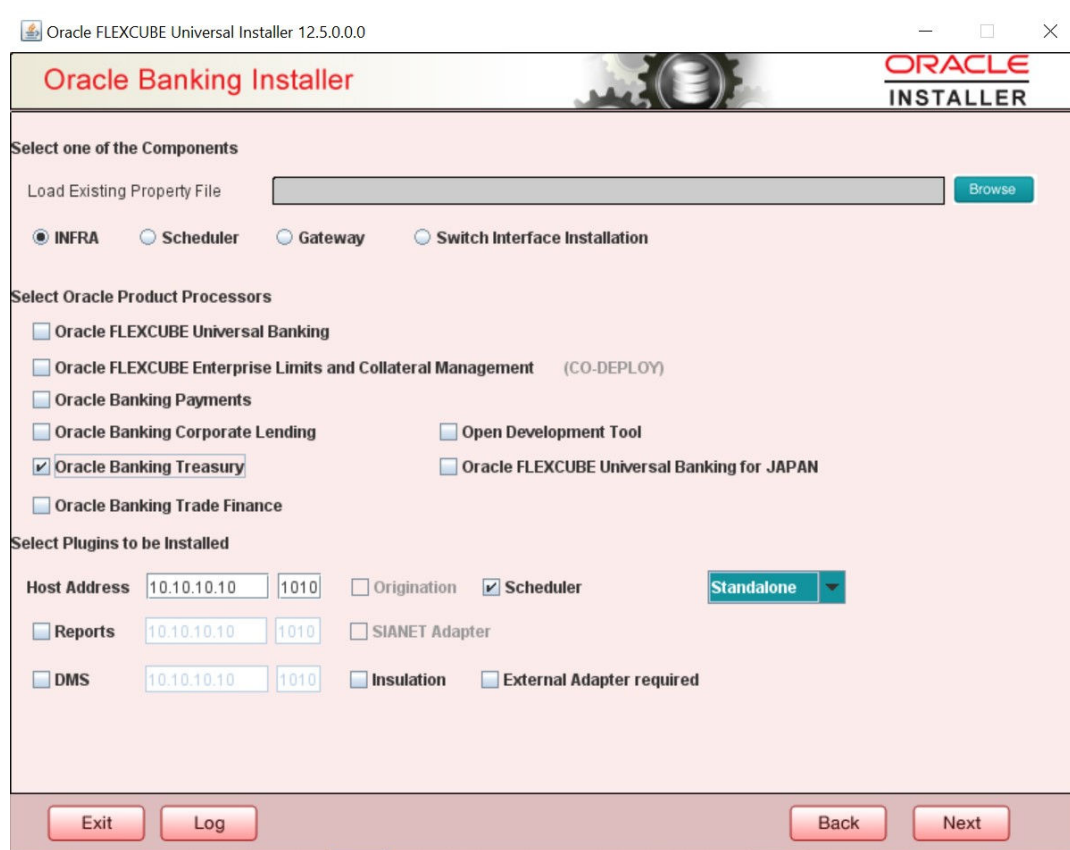
- Property File creation**
- Utilities**

Based on the selection, next screen is shown. Click **Property File creation** for the current case.

2. Click **Next** and the following screen is displayed.



**Figure 1-3 Property File Creation**



These are the plugins available:

- Scheduler
- Reports
- DMS(Document Management System)
- Insulation

You can load existing property-file to make any modifications.

- a. Select the component for which property file is to be created.
  - i. INFRA is for FCUBS property file creation. To create property file for Scheduler or Gateway or Switch Interface Installation, refer the respective property file creation document.
- b. Select Oracle Banking Treasury for Treasury Management Property file creation. Select Scheduler which is Standalone, where Scheduler will be Standalone with EAR. If Embedded is selected, it will be integrated with the Treasury Management EAR.
- c. In the screen below, select the Plugins to be included in the application.
- d. If you need to modify an existing property file, load it using the respective browse button.

Plugins are enabled and disabled based on the combination of Product Processors and components selected.

These are the plugins available for Oracle Banking Treasury Management

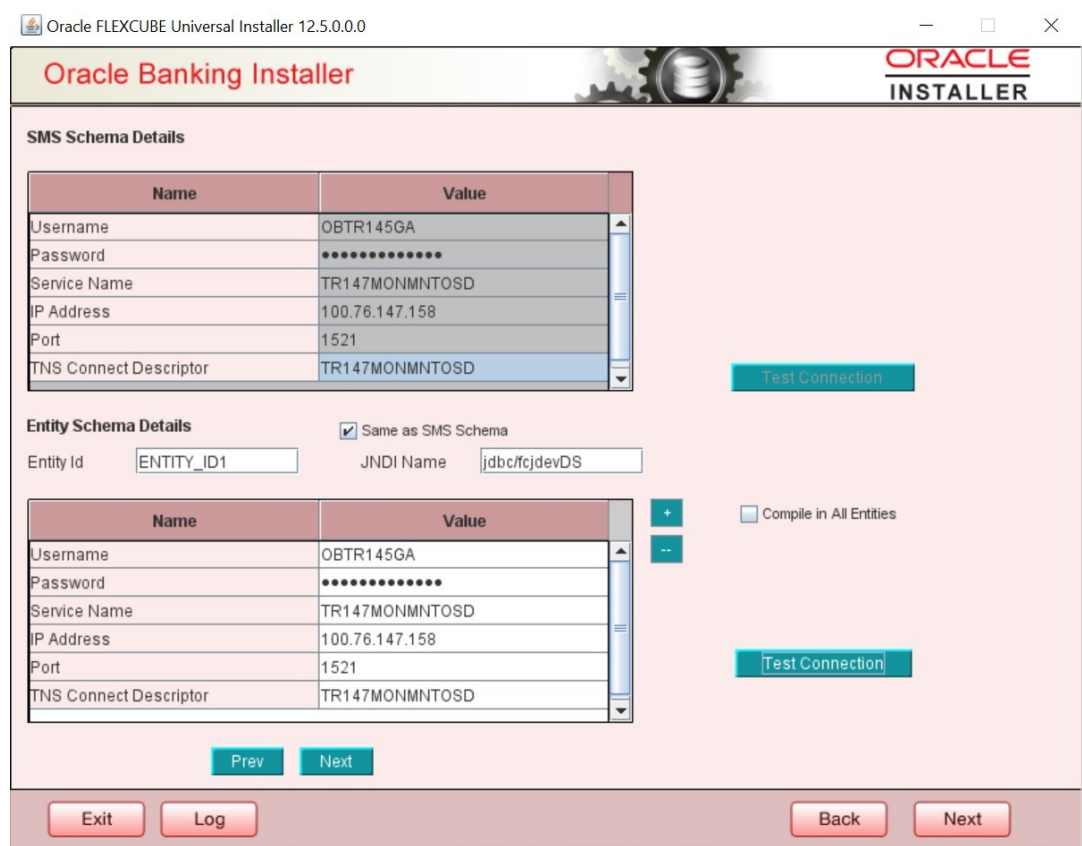
- Scheduler
- Reports

These are the plugins available for Oracle Banking Treasury if co-deployed with Oracle Banking Payments

- Scheduler
- Reports
- BPEL

3. Click **Next** again and the following screen is displayed:

**Figure 1-4 SMS Schema Details**



Provide the SMS schema details to capture the credentials which is used for DB Compilation.

**Note:**

IP Address should be same as mentioned in the TNSnames.ora

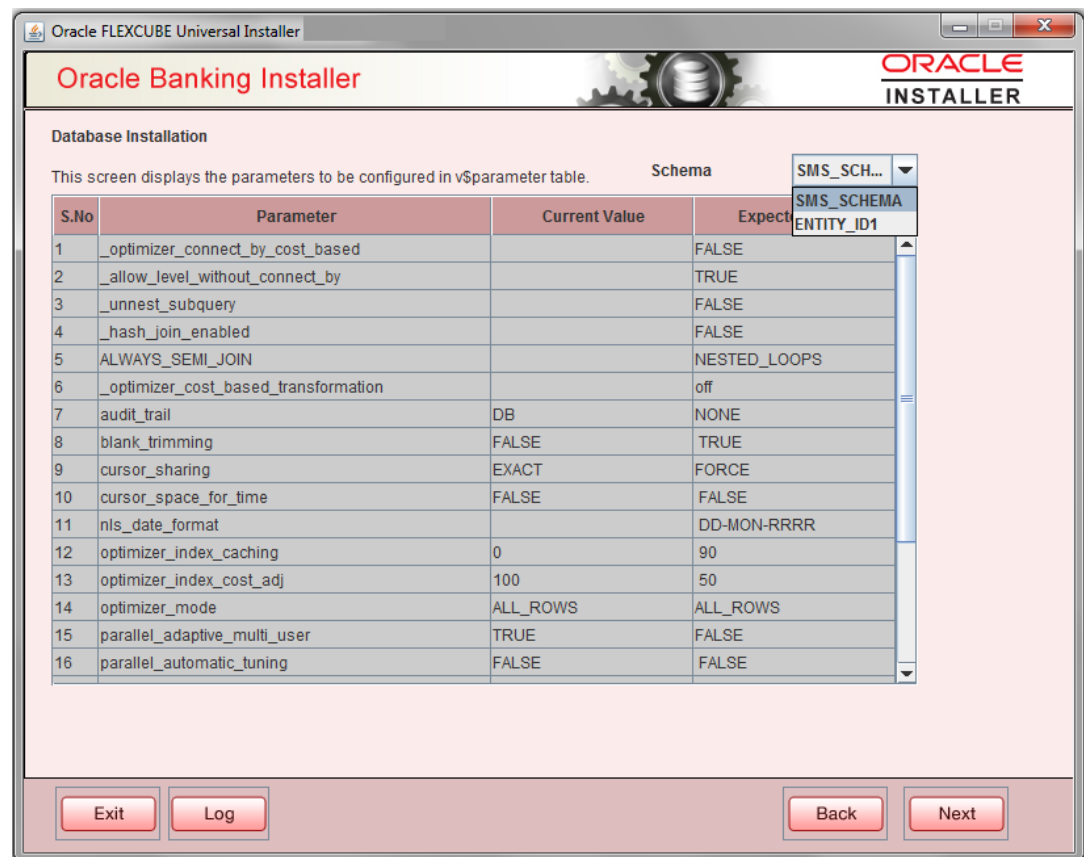
Once the connection is successful env.properties file present in path `INSTALLER > SOFT > GUI > logs > env.properties` gets updated with schema details in encrypted format.

**For Multi-Entity Details:**

- a. **Scenario for Single Entity:**
    - Here Entity Schema is mandatory, atleast minimum one entry should be provided.
    - Entity Id value is default, that is, **ENTITY\_ID1** for first entry.
    - Provide the JNDI Name for the ENTITY\_ID1. By default the jndi name is **jdbc/fcjdevDS**.
    - Give the Schema Details for the Entity1.
    - Here Compile In All Entities Field is **N**. (As using the Single Entity Concept).
  - b. **Scenario for More than One Entity, that is, Multi Entity:**
    - After providing the Single Entity details, click on + Add the rows.
    - Now give the details for Entity\_ID2. Here the field is mandatory.
    - Provide the schema details and the JNDI name.
    - Next and Prev button is to traverse for entity screens.
    - Can also add the entites and delete the entities.
4. Click on **Test Connection** button. After successful connection click on **Next** button to proceed and below Screen is displayed. This screen displays database parameters listed in v\$parameter table.

This page is Read-only used as reference to know the database parameters. Schema drop-down list is provided to verify parameters of SMS and Entity Schemas.

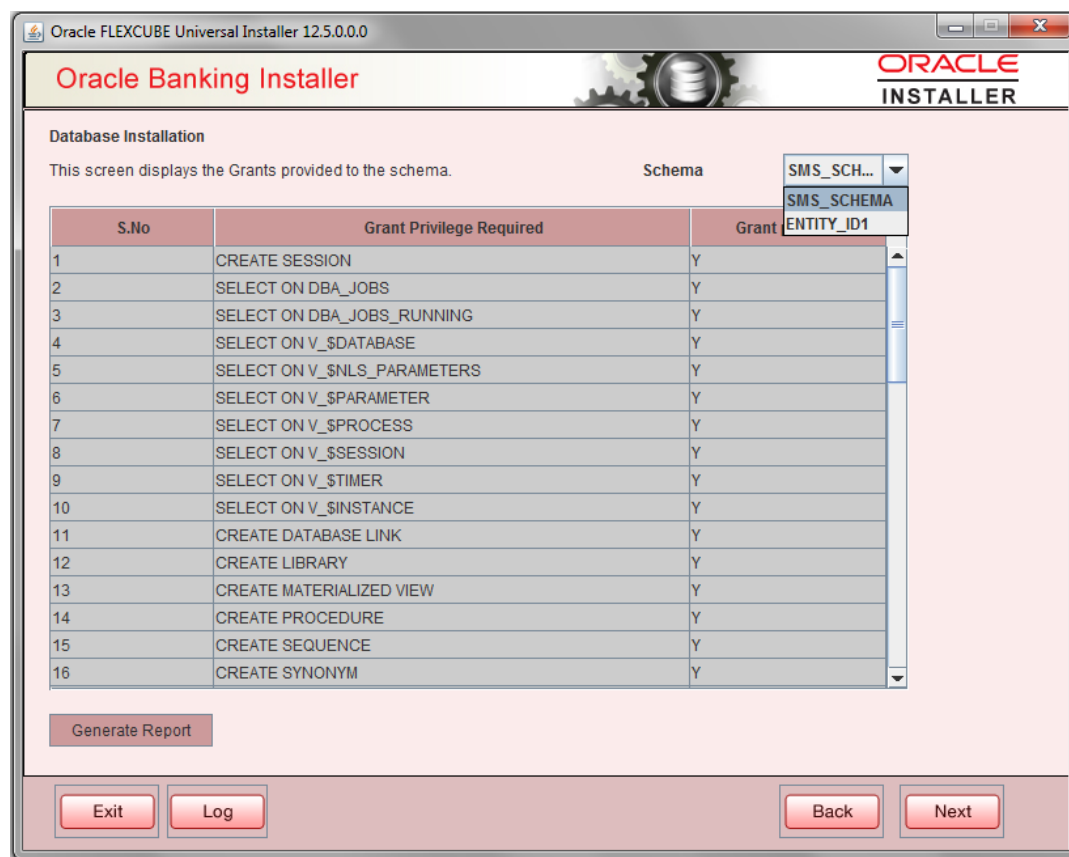
**Figure 1-5 DB Installation**



- Click on **Next** Button. Following screen displays the grants provided to the schema. If object compilation is required and the privilege is not given, then you can find that out from this screen.

Schema drop-down lists SMS and Entity Schemas. Select Schema and proceed further.

**Figure 1-6 Grants Script Details**



- Click **Generate Report** button, the installer creates an SQL file **grantScript.sql** containing the script for granting the privileges in the **Logs** folder and the following screen is displayed.

You can use this file to get the access.

 **Note:**

Only the sys user can execute the file **grantScript.sql** for granting privileges.


- Click **Next** again and the following screen is displayed:

Figure 1-7 Environment Details

Table 1-1 Environment Details

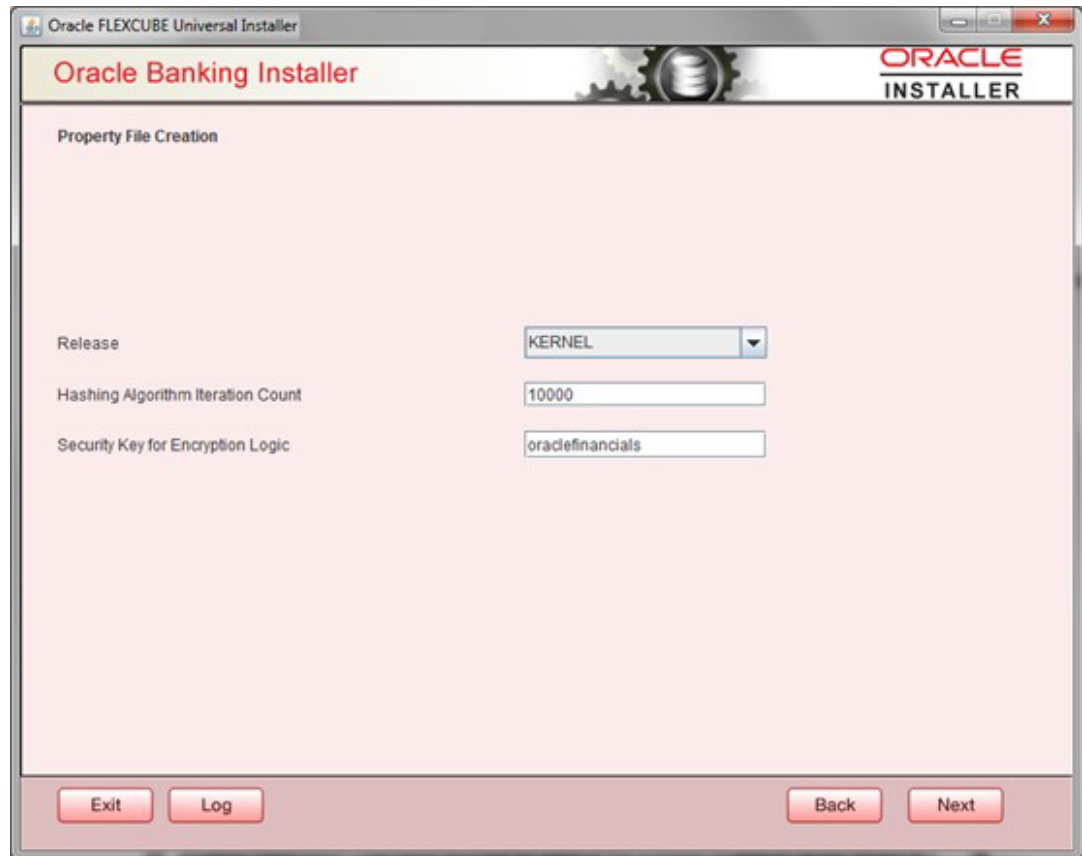
Field	Description
<b>EAR Name</b>	Specify a name for the application to be deployed. You cannot use special characters such as . (Dot), , (comma), \$ and so on. However, you may use _ (underscore). – Applicable for both Windows and Linux.
<b>Context Name</b>	Based on the Application type selected, the Installer displays the application context. However, you may modify the default value. This information is updated in <b>application.xml</b> . In case of a WebLogic server, this is updated in <b>weblogic.xml</b> .
<b>File Separator Style</b>	Specify the type of file separator (For example: Linux or Windows). Select the appropriate one from the drop-down list. You also need to specify the version of the selected operating system.
<b>Application Server</b>	Specify the application server in which you are creating the property file. Select the appropriate one from the adjoining drop-down list. For WebSphere, External JSUIXML Required option is not supported.
<b>External JSUIXML Required</b>	Specify whether screen changes are deployed as External JSUIXML for the application. EXTERNAL_JSUIXML_REQUIRED=Y/N: Depending on requirement EXTERNAL_JSUIXML_REQUIRED=N: JS and UIXML files are included inside the application EAR. EXTERNAL_JSUIXML_REQUIRED=Y: JS and UIXML and HELP files are kept in an external path in the application server.

Table 1-1 (Cont.) Environment Details

Field	Description
<b>External Property File Required</b>	<p>Specify whether screen changes are be deployed as External fcubs.properties for the application.</p> <p>EXTERNAL_PROPERTY_PATH_REQUIRED =Y/N: Depending on requirement</p> <p>EXTERNAL_PROPERTY_PATH_REQUIRED =N: fcubs.properties file is included inside the application EAR.</p> <p>EXTERNAL_PROPERTY_PATH_REQUIRED =Y: fcubs.properties file is kept in an external path in the application server.</p> <div style="border: 1px solid #0070C0; padding: 5px; margin-top: 10px;"> <p> <b>Note:</b></p> <p>External property file path should have the property file name also with it. For example: C:\App\fcubs.properties</p> </div>
<b>Application server path</b>	Provide the Application Server Path.
<b>Source Path</b>	Provide the source path of the console exec directory. (Mention exact folder name after unzip the source)
<b>Ear Destination path</b>	Specify the path where Ear needs to be copied after building it using SOFT Installer.
<b>External JSUIXML Path</b>	<p>In case External JSUIXML Required option is checked, External JSUIXML path on the application server machine has to be specified here. External JSUIXML required option is supported only for Weblogic Application Server.</p> <p>EXTERNAL_JSUIXML_PATH</p> <p><b>Example:</b> /scratch/work_area/DEV/FC124_UBS/JS_UIXML_HELP - this can be any path in the Application server.</p>
<b>External Property File Path</b>	In case External Property File required option is selected, External Property File path on the application server machine has to be specified here. ss

8. Click **Next** to continue and following screen is displayed:

Figure 1-8 Release Details



**Release** : Specify the release in which you are creating the property file. Default option is **KERNEL**. The options are:

- KERNEL

Specify the Hashing algorithm iteration count. By default it is 1000.

**Security Key for Encryption Logic** is the key (exact 16 characters) for all encryption logic. By default is **oraclefinancials**.

## 1.2 Custom Installation

Figure 1-9 Custom Installation

Oracle FLEXCUBE Universal Installer 12.5.0.0.0

Oracle Banking Installer

ORACLE  
INSTALLER

Property File Creation - DataSource

Please enter DataSource Names

SMS Data Source

Scheduler Data Source

PM Online JNDI

PM Batch JNDI

Webservices Provider URL

Host Server URL

Standalone Scheduler URL

Exit Log Back Next

1. Enter Data sources required which is requested as per the product, Plug-in and Component combinations chosen in the first screen.
2. SMS Data source is always enabled as it is required for most of the cases.
3. PM related data sources are enabled for PM product processor.
4. Enter the Webservices Provider URL.
5. Host Server is the server where FCUBS application is deployed/to be deployed.
6. Standalone scheduler URL is enabled is Standalone option is selected.
7. Click **Next** to proceed to the next screen.

## 1.3 Setting General Properties

This topic describes the process of setting common properties of Oracle Banking Treasury Management.

The installer displays the **General Property** screen.



Figure 1-10 General Property

Oracle FLEXCUBE Universal Installer

### Oracle Banking Installer

ORACLE  
INSTALLER

#### Property File Creation - General Property

Debug Logs Required:   LOV Fetch Required  External LOV Required

Work Area:

Signature Path:

Excel Path:

Request Time Out:  In milli seconds

Connection Time Out:  In Seconds

Session Time Out:  In Seconds

Max Image Size:  In Bytes

User Batch Time:  In Hours

Css Style:

Language:

Name:

ISO Code:


Application Title:

Version:

CopyRights:

You can specify the following details in this screen:

**Table 1-2 General Property**

Field	Description
<b>Debug Logs Required</b>	<p>If debug option is required, select <b>Yes</b> from the drop-down list. If not required, select <b>No</b>. By default the value is <b>No</b>.</p> <div style="border-left: 2px solid #0070C0; border-bottom: 2px solid #0070C0; padding: 10px; margin: 10px 0;"> <p> <b>Note:</b></p> <p>Parameter APPLICATION_WORK_AREA in fcubs.properties is updated to <b>Work Area</b> path provided during installation.</p> </div> <p>Parameter DEBUG is updated based on <b>Debug Logs Required</b> selection. To log debug for the user, following should be available.</p> <ul style="list-style-type: none"> <li>• In Day 0 Setup CSTB_PARAM table is appended with parameter name WORK_AREA and path provided for debug logs.</li> <li>• CSTB_DEBUG table should have entries for required modules.</li> <li>• Corresponding user entries should be input in CSTB_DEBUG_USERS.</li> </ul> <p><b>Example:</b> If SM module log is enabled for the user, then there should be an entry in cstb_debug_users.</p> <p><b>Table:</b> CSTB_DEBUG_USERS (User Level) CSTB DEBUG USERS</p> <p><b>Table:</b> CSTB_DEBUG (Bank Level)CSTB DEBUG</p> <p>All the configuration is done using back-end scripts, which can be executed by Data Controller.</p> <p>Snapshot of <b>fcubs.properties</b> is displayed below:FCUBS Properties</p> <p>Change Logs can be visited to view audit information.</p>
<b>LOV Fetch Required</b>	<p>If you select this check box, the option lists displays the matching values based on the first characters that you enter in a field. If you specify the first three characters of a value to be entered in an option list and tab out, the system displays the complete list of values that are matching the first three characters.</p> <p>If you do not select this, option lists does not show the matching values based on the first few characters. You need to specify the complete value against the field.</p>
<b>External LOV Required</b>	<p>If you select this check box, External Lov option for external Limits is enabled.</p>
<b>Work Area</b>	<p>Specify the work area. For example: D:\BrnDbgs\</p>
<b>Signature Path</b>	<p>Specify the location at which the signature images should be placed.</p>
<b>Excel Path</b>	<p>Specify the location at which the excel files should be generated.</p>
<b>Request Time Out</b>	<p>Specify the database request timeout value in milli seconds. This is the maximum number of seconds the database waits for a query to return the result.By default it is 1800000 milli seconds.</p>
<b>Connection Time Out</b>	<p>Specify the database connection timeout value in seconds. This is the maximum number of seconds the application waits for a connection to the database to open.</p>
<b>Session Time Out</b>	<p>Enter the session time out value in seconds. This is the maximum number of seconds during which the application gets active without any user intervention. If there is no user intervention continuously for the duration specified here, the user session gets expire.</p>
<b>Max Image Size</b>	<p>Specifies the maximum image size that can be uploaded. The default size is 1048576 bytes.</p>

**Table 1-2 (Cont.) General Property**

Field	Description
<b>CSS Style</b>	Specify the CSS style to be used from the adjoining drop down list. You can select one of the following CSS styles: <ul style="list-style-type: none"> <li><b>Default</b> – select this to apply the default style provided.</li> <li><b>Custom</b> – select this to apply a custom style</li> </ul>
<b>Name</b>	Specify the name of the CSS style. Once you have specified the above details, click <b>Next</b> .
<b>Language</b>	Specify the language in which you wish to see in the application. English is the default language. However, based on the requirement, you can set a different language. Select the appropriate one from the drop-down list. Based on the language selected, the installer displays the ISO code.
<b>Application Title</b>	Specify the application title. C
<b>Version</b>	Specify the application version. For example: 14.0.0.0.0
<b>CopyRights</b>	Specify the copyright details. For example: Copyright © 2017, Oracle and/or its affiliates. All rights reserved.
<b>Integration With ODA ChatBot</b>	Select this check box to enable ODA ChatBot. ODA ChatBot setup details are available in ChatBot guide document.

**Table 1-3 CSTB\_DEBUG\_USERS**

Module	Debug	User ID
SM	Y	XYZ

**Table 1-4 CSTB\_DEBUG**

Module	Debug
SM	Y

**Figure 1-11 FCUBS Properties**

```
##### COMMON PROPERTIES #####
APPLICATION_NAME=FCJ
APPLICATION_EXT=FCROFC
APPLICATION_SERVER=WL
APPLICATION_WORK_AREA=/scratch/work_area/DEV/FC125R2/APPLSGS
DEBUG=Y
SSL_ENABLED=Y
OPSS_AVAILABLE=N
BRANCH_CENTRALIZED=Y
REQUEST_TIME_OUT=1800000
```

## 1.4 Setting Single Sign on

Figure 1-12 Setting Single Sign on

**Property File Creation - Single Sign on**

SSO Required  SSO Type **DEFAULT** ▼

SSO KEY

Authentication details maintained external to FLEXCUBE

External Password Required  Authentication Type **MSAD** ▼

External User Login Required

OPSS Available

**Option to provide LDAP server details**

No.	Name	Value
1	LDAP SERVER URL	LDAP://10.10.10.10:111
2	LDAP SSL ENABLED	<input type="checkbox"/>
3	SECURITY AUTHENTICATION TYPE	Simple
4	DOMAIN NAME	I-FLEX.COM
5	LDAP SERVER TIMEOUT	0

**Option to provide SAML details**

No.	Name	Value
1	SAML CERTIFICATE PATH	D:\Security\SAML_Implementation\TestFiles\certstore\b...
2	SAML CERTIFICATE PASSWORD	*****
3	SAML CERTIFICATE ALIAS	barc
4	SAML VALID AUDIENCE	bPAID_BWSIT

Exit Log Back Next

You can specify the following details in this screen:

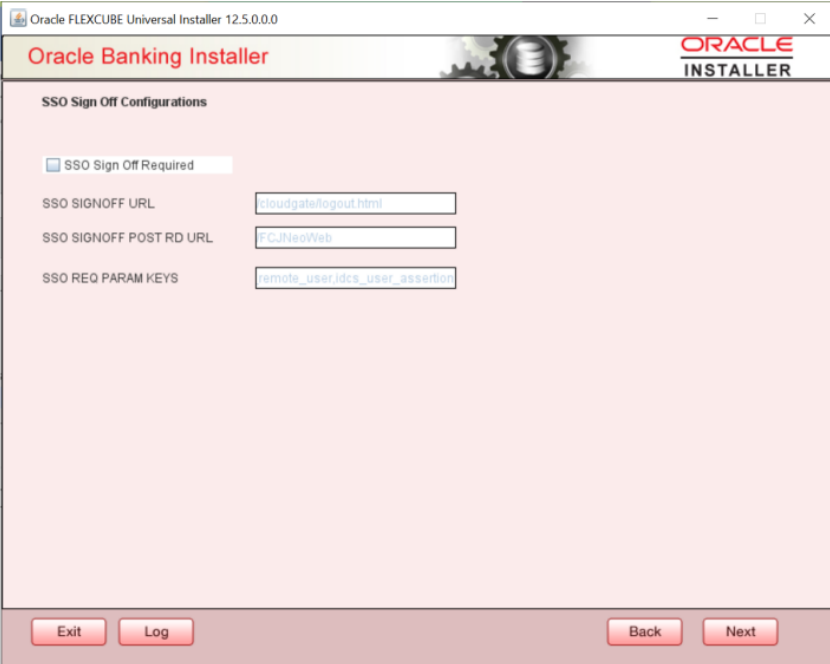
Table 1-5 Single Sign on

Field	Description
<b>SSO Required</b>	Select this check box to enable single sign-on (SSO). If you select this check box, you need to enter the SSO Key.


Table 1-5 (Cont.) Single Sign on

Field	Description
SSO Type	<p>This is disabled. This is enabled on selecting SSO Required Flag. Specify the SSO Type from the list of following:</p> <ul style="list-style-type: none"> <li>• DEFAULT</li> <li>• TOKEN</li> <li>• SAML</li> <li>• IDCS Token</li> <li>• DEFAULT - This option is the default scenario where the External SSO system needs to send the SSO UserID mapped to the application userID in the SSO_KEY parameter. For Example: 1• If SSO_KEY maintained is DN and SSO_USERID is fcubuser@oracle.com then the SSO system needs to send SSO_USERID in the DN parameter when a request is sent to the application. • The SSO UserID needs to be maintained in the LDAP_USER field of the User Maintenance screen –SSDUSRDF- Refer to section 2.10 <i>Common Core Security Management System User Guide</i></li> <li>• TOKEN - This option needs to be selected if Custom implementation is required for SSO authentication in the application's Select this option to invoke AuthenticateCustomToken.class when the application login is performed. The required custom implementation method for SSO/SAML needs to be done in the custom class. Exec File Path: INFRA\FCJNeoWeb\war\WEBINF\classes\com\ofss\infra\ss o\AuthenticateCustomToken.class can be referred for the method details. Note: Configuration details on the External SSO system will not be provided/available as part of Application documentation. This needs to be checked with the respective SSO provider.</li> <li>• SAML - By default, 'DEFAULT' option is selected; however, you can change it. IF SAML is selected, SAML details table below will be enabled .Please enter SAML details such as Certificate Path, password, alias and valid audience. This option needs to be selected if SSO -SAML authentication is required. In this case, the external system needs to send the SAML request XML in the SSO_KEY parameter. The application will validate the SAML signature using the certificate Path &amp; password. In addition, the SAML Audience value provided should be the same in the SAML request sent to the application. Note: After the successful SAML validations, the application will allow you to log in with the userID sent in the SAML request. The SAML UserID send in the SAML request needs to be maintained in the LDAP_USER field of the User Maintenance screen – SSDUSRDF- Refer to section 2.10 of <i>Common Core Security Management System User Guide</i>.</li> <li>• IDCS Token - This option needs to be selected if Oracle Identity Cloud Service(IDCS) is used as the Identify &amp; Access management system in cloud deployments.</li> </ul>

Table 1-5 (Cont.) Single Sign on

Field	Description
<p><b>SSO Signoff Configurations</b></p>	<p>The below section details the options available to do SSO signoff when the user has logged off from the application Select the SSO signoff check box to enable the below fields</p> <ol style="list-style-type: none"> <li><b>SSO_SIGNOFF_URL:</b> The External SSO logout URL which needs to be invoked after application logoff needs to be configured here. Example: <code>https://oam/server/logout</code></li> <li><b>SSO_SIGNOFF_POST_RD_URL :</b> This is applicable only if IDCS is used as IAM system. The URL/Context path which needs to be navigated post SSO signoff needs to be configured here. Example: <code>/FCJNeoWeb</code></li> <li><b>SSO_REQ_PARAM_KEYS:</b> This is applicable only if IDCS is used as an IAM system. The keys required for the IDCS token validation need to be specified here as comma-separated. Example: <code>"idcs_service_url,idcs_remote_user,idcs_user_assertion"</code></li> </ol> <p><b>Figure 1-13 SSO signoff</b></p>  <p><b>Note:</b> Note that the Application will only invoke the configured SSO logout URL when the user is logging off the application. The application will not perform any other action for SSO logout.</p>

**Table 1-5 (Cont.) Single Sign on**

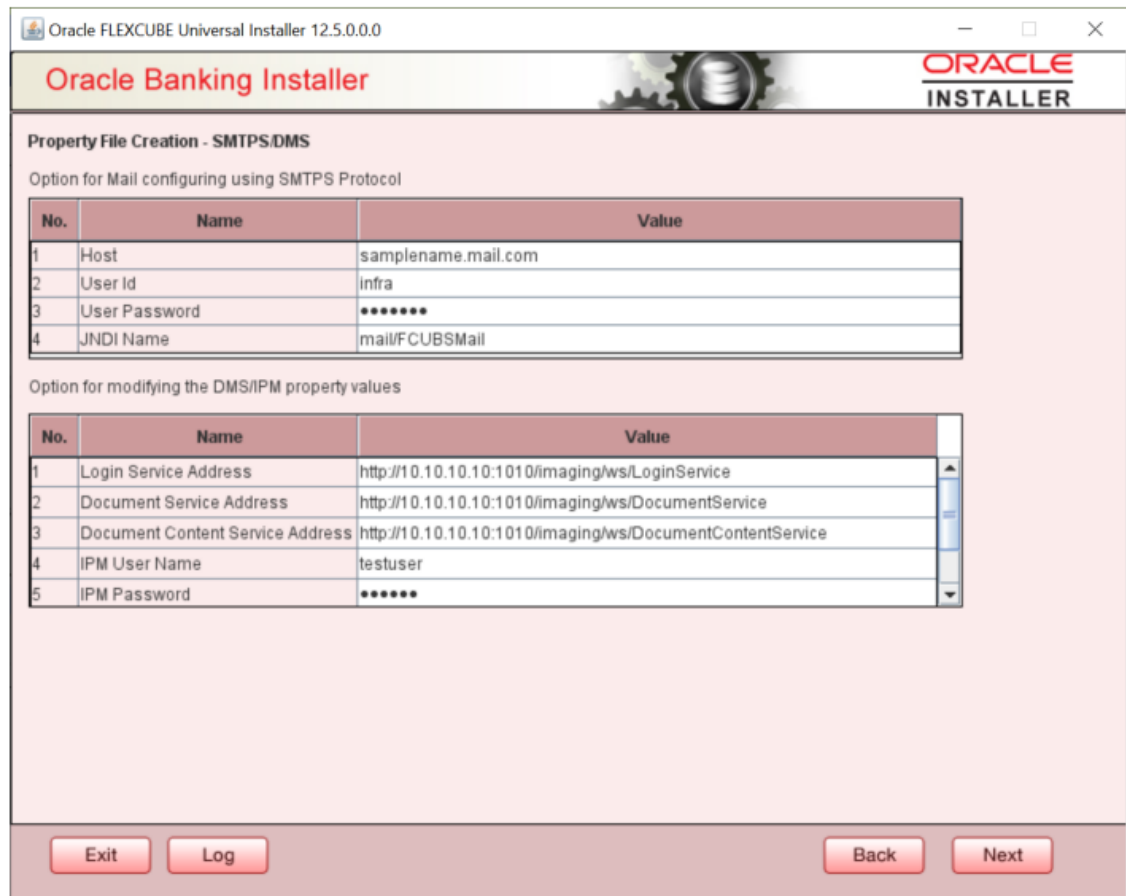
Field	Description
<b>SSO KEY</b>	Specify the SSO key. If you have selected the check box <b>SSO Required</b> , it is mandatory to specify the SSO key. By default the value is <b>DN</b> . If you select the <b>SSO required</b> check box, the Installer skips the following two screens and directly navigate to the SSL screen shown below in this manual. If you are not selected the <b>SSO required</b> check box, then on clicking the <b>Next</b> button, the screen for enabling SSL options is displayed.
<b>External Password Required</b>	Select this check box to allow the user-login using MSAD/LDAP password irrespective of the user ID. If you check this box, the user ID can be either the MSAD/LDAP/ user ID or the FCUBS user ID. And the password can be MSAD/ LDAP/ server password only. If LDAP is selected, table related to LDAP is enabled. Enter LDAP server URL, SSL enabled, Security authentication type, Domain Name, and LDAP Server timeout details. By default, this check box is deselected. However, you can change this.
<b>External User Login Required</b>	Select this check box to enable user login using MSAD/LDAP/ user ID. If you select this box, the user can login using MSAD/LDAP/ server user ID as well as using FCUBS user ID. If you do not select this check box, the user can login using FCUBS user ID only. By default, this check box is deselected. However, you can change this.  <div style="border-left: 2px solid #0070C0; padding-left: 10px; margin-left: 20px;"> <p> <b>Note:</b></p> <p><b>Authentication Type</b> is enabled if one of the above check boxes is checked.</p> </div>
<b>Authentication Type</b>	Select the authentication type from the adjoining drop-down list. This is the type of external server that is used for authentication. This option is enabled only when External Password Required check box is selected. You can select one of the following options: <ul style="list-style-type: none"> <li>• MSAD (Microsoft Active Directory)</li> <li>• LDAP (Lightweight Directory Access Protocol)</li> </ul> By default, <b>MSAD</b> is selected. However, you can change it. Specify the following details.
<b>Platform Security</b>	If the Platform Security box is checked for weblogic, the symmetric key is not stored in the property file for security reasons. If the Platform Security box is unchecked, the symmetric key is available in the property file and a warning message is displayed to the user.
<b>SMS Security Key</b>	This field is used to capture the security key value if the Platform Security check box is checked.
<b>SSL Enabled</b>	SSL Enabled is selected by default. Click <b>Next</b> and the next screen gets displayed.

Click **Next** and the next screen gets displayed.

## 1.5 Setting SMTPS/DMS details

This section describes the method to configure email details and SMTPS/DMS properties whichever is required.

**Figure 1-14** Setting SMTPS/DMS details



For SMTPS protocol, specify the following details.

**Table 1-6** Options for Mail configuration

Field	Description
<b>Host</b>	Specify the SMTP host name.
<b>User ID</b>	Specify the user ID.
<b>User Password</b>	Specify the user password.
<b>JNDI Name</b>	Specify the JNDI name. In the next table specify the branch properties like Date Separator, WorkFlow frequency, Compress Request as required.

DMS/IPM Properties table is enabled only if DMS plug-in is enabled. Specify the following details:

**Table 1-7** DMS/IPM Properties

Field	Description
<b>Login Service Address</b>	This is the endpoint address of the web service (OracleIPM.WebService.EndpointAddress).



Table 1-7 (Cont.) DMS/IPM Properties

Field	Description
<b>Document Service Address</b>	This is the URL to which the Oracle IPM adapter uploads the documents (OracleIPM11G.DocumentService.EndpointAddress).
<b>Document Content Service Address</b>	This is the URL to which the Oracle IPM adapter uploads the documents (OracleIPM11G.Document ConetntService.EndpointAddress). <b>Example for Login Service Address:</b> Weblogic: http://10.10.10.10:1010/imaging/ws/LoginService In the ablove URL replace LoginService with DocumentService and DocumentContentService respectively for Document Service Address and Document Content Service Address as well.
<b>IPM User Name</b>	This is the user name accessing Oracle IPM (OracleIPM11G.Authentication.UserName).
<b>IPM Password</b>	This is the password for the above IPM user name (OracleIPM11G.Authentication.Password).
<b>IPM Application Name</b>	This indicates the license that provides login rights to Oracle IPM (OracleIPM11G.Application).
<b>HTTP Session Maintain</b>	This check box indicates whether HTTP session to be maintained or not (OracleIPM11G.MaintainSession).

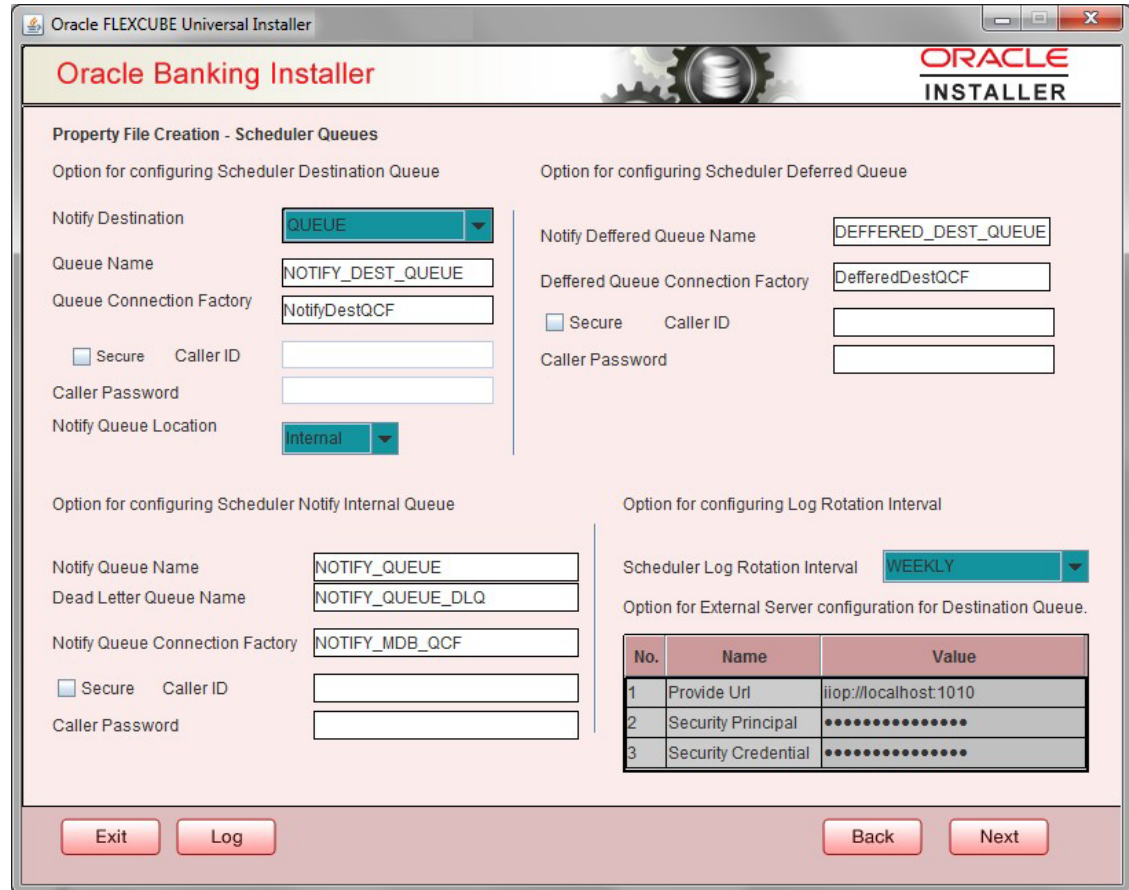
Once you have specified the above details, click **Next** and system displays the next screen.

## 1.6 Configuring Scheduler

If **Scheduler Standalone** is chosen during plug-in selection time, all the below screens mentioned under scheduler configuration is **not applicable**.

This topic describes the method to configure scheduler data source. System displays the following screen:

Figure 1-15 Scheduler Queues





Specify the following details:

Table 1-8 Scheduler Queues

Field	Description
<b>Scheduler Log Rotation Interval</b>	Select the interval between each rotation of scheduler log. Given options are – DAILY, WEEKLY and MONTHLY.
<b>Notify Destination</b>	Specify the notify destination. Select one of the following options: <ul style="list-style-type: none"> <li>• QUEUE</li> <li>• TOPIC</li> </ul>
<b>Queue Name</b>	Set <b>NOTIFY_DEST_QUEUE</b> as the destination queue name.
<b>Queue Connection Factory</b>	Set <b>NotifyDestTCF</b> as the queue connection factory.
<b>Secure</b>	Select this check box to indicate that it is a secured queue connection factory. If you select this check box, you are prompted to specify the Caller ID and Caller Password as shown in the following screen. Specify the following details: <ul style="list-style-type: none"> <li>• <b>Notify Deferred Queue Name</b> - Set <b>DEFERRED_DEST_QUEUE</b> as the notify differed queue name.</li> <li>• <b>Deffered Queue Connection Factory</b> - Set <b>DefferedDestQcf</b> as the deferred queue connection factory.</li> </ul>

**Table 1-8 (Cont.) Scheduler Queues**

Field	Description
<b>Secure</b>	Select this check box to indicate that it is a secured deferred queue connection factory. If you select this check box, you are prompted to enter the caller ID and caller password. Specify the following details: <ul style="list-style-type: none"> <li><b>Notify Queue Name</b> - Set <b>NOTIFY_QUEUE</b> as the notify queue name..</li> <li><b>Dead Letter Queue Name</b> - Set <b>NOTIFY_QUEUE_DLQ</b> as the dead letter queue name.</li> <li><b>Notify Queue Connection Factory</b> - Set <b>NOTIFY_MDB_QCF</b> as the notify queue connection factory.</li> </ul>
<b>Secure</b>	Select this check box to indicate that it is a secured queue connection factory. If you select this check box, you are prompted to enter the caller ID and caller password as shown in the following screen
<b>Notify Queue Location</b>	Specify the notify queue location. Select one of the following options: <ul style="list-style-type: none"> <li><b>Internal</b></li> <li><b>External</b></li> </ul> <div style="border: 1px solid #0070C0; padding: 5px; margin-top: 10px;"> <p> <b>Note:</b> For Oracle WebLogic Application Server, the notify queue location should be selected as <b>Internal</b>.</p> </div> <p>If you choose <b>External</b> following details for the external queue are enabled.</p> <ul style="list-style-type: none"> <li><b>Provider URL</b></li> <li><b>Security Principal</b></li> <li><b>Security Credentials</b></li> </ul>
<b>Provider URL</b>	Specify the provide URL (iiop://localhost:1010). 1010 is the default IIOp port.
<b>Security Principal</b>	Specify the login ID to access the application. server.
<b>Security Credentials</b>	Specify the password to access the application server. Click <b>Next</b> to proceed with scheduler configuration.  <div style="border: 1px solid #0070C0; padding: 5px; margin-top: 10px;"> <p> <b>Note:</b> If you choose <b>Internal</b> as the <b>Notify Queue Location</b>, this screen is not displayed.</p> </div>

**Table 1-9 URL**

Application Server	EMS Out Initial Context Factory
Oracle WebLogic	t3://<ip_adress>:port For example: t3://10.10.10.10:1010 Here, 10.10.10.10 represents the local host and 1010 to the target server default port (AdminServer/ManagedServer).

Click **Next** and the following screen is displayed.

## 1.7 Setting Scheduler EMS Properties

**Figure 1-16 Scheduler EMS Properties**

No.	Name	Value
1	Incoming Dead Letter Queue Name	EMS_QUEUE_DLQ
2	Incoming backup Queue Name	EMS_QUEUE_BACK
3	Incoming Queue Connection Factory	EmsQcf
4	Secure Incoming Queue Connection	<input type="checkbox"/>
5	Incoming Queue Caller Id	
6	Incoming Queue Caller Password	
7	Outgoing Dead Letter Queue Name	EMS_QUEUE_DLQ
8	Outgoing Queue Connection Factory	EmsQcf
9	Secure Outgoing Queue Connection	<input type="checkbox"/>
10	Outgoing Queue Caller Id	
11	Outgoing Queue Caller Password	
12	Outgoing Queue Provider URL	t3://10.10.10:1010
13	Queue Principal	*****
14	Queue Credential	*****
15	Incoming Queue Name	EMS_INQUEUE
16	Outgoing Queue Name	EMS_OUTQUEUE
17	SFMS Incoming Queue	SFMS_INQUEUE
18	RTGS Incoming Queue	RTGS_INQUEUE
19	EMS Bulker Queue	BULKER_QUEUE

Specify the following details:

**Table 1-10 Scheduler EMS Properties**

Field	Description
<b>Incoming Dead Letter Queue Name</b>	By default <b>EMS_QUEUE_DLQ</b> is set as the incoming dead letter queue name, retain the same.
<b>Incoming backup Queue Name</b>	By default <b>EMS_QUEUE_BACK</b> is set as incoming backup queue name, retain the same.
<b>Incoming Queue Connection Factory</b>	Specify the name of the incoming connection factory to which EMS listens. You need to create this connection factory in the application server. For details on connection factory creation, follow the steps described for creation of notify connection factories. <b>EmsQcf</b> is given as default value for the incoming queue connection factory.

Table 1-10 (Cont.) Scheduler EMS Properties

Field	Description
<b>Secure Incoming Queue Connection</b>	Select this check box to indicate that it is a secured queue connection.
<b>Incoming Queue Caller ID</b>	Specify the caller ID for the secured queue connection.
<b>Incoming Queue Caller Password</b>	Specify the caller password for the secured queue connection.
<b>Outgoing Dead Letter Queue Name</b>	By default <b>EMS_QUEUE_DLQ</b> is set as outgoing dead letter queue name, retain the same.
<b>Outgoing Queue Connection Factory</b>	Specify the name of the outgoing connection factory to which EMS listens. You need to create this connection factory in the application server. For details on connection factory creation, follow the steps described for creation of notify connection factories. <b>EmsQcf</b> is given as default value for the outgoing queue connection factory.
<b>Secure Outgoing Queue Connection</b>	Select this check box to indicate that it is a secured outgoing queue connection.
<b>Outgoing Queue Caller ID</b>	Specify the caller ID for the secured queue connection.
<b>Outgoing Queue Caller Password</b>	Specify the caller Password for the secured queue connection.
<b>Outgoing Queue Provider URL</b>	Specify the URL of the outgoing queue. In case EMS OUT MDB is to be configured to queue, you need to specify the URL for outgoing provider based on the application server. By default, the Installer displays the outgoing queue provider URL for Oracle WebLogic. This value is application server dependent. The details of Outgoing Queue Provider URL to be used for different application servers.
<b>Queue Principal</b>	Specify the queue principal. If EMS OUT MDB has to be configured to queue, you need to specify the EMS out queue principal. This is the user name for the application server in which the queue is configured.
<b>Queue Credential</b>	Specify the queue credential. If EMS OUT MDB has to be configured to queue, you need to specify the EMS out queue credential. This is the password for the above user name created for application server in which the queue configured.
<b>Incoming Queue Name</b>	Specify the incoming queue name for which EMS is configured. By default <b>EMS_INQUEUE</b> is specified.
<b>Outgoing Queue Name</b>	Specify the outgoing queue name for which EMS is configured. By default <b>EMS_OUTQUEUE</b> is specified.
<b>SFMS Incoming Queue</b>	Specify the SFMS Incoming Queue for which EMS is configured. By default <b>SFMS_INQUEUE</b> is specified.
<b>RTGS Incoming Queue</b>	Specify the RTGS incoming Queue for which EMS is configured. By default <b>RTGS_INQUEUE</b> is specified.
<b>EMS Bulker Queue</b>	Specify the Bulker Queue name. By default <b>BULKER_QUEUE</b> is specified, retain the same. So that in fcubs.properties file, <b>EMS_BULKER_QUEUE</b> field gets updated to <b>BULKER_QUEUE</b> value.

**Table 1-11 Outgoing Queue Provider URL**

Application Server	EMS Out Initial Context Factory
Oracle WebLogic	t3://<ip_adress>:port For example: t3://10.10.10.10:1010 Here, 10.10.10.10 represents the local host and 1010 to the target server default port (AdminServer/ManagedServer).

Once you have specified the above details, click **Next** and system displays the next screen.

## 1.8 Setting EMS FTP/FTPS Properties

Specify the following details:

**Figure 1-17 EMS FTP/FTPS Properties**

**Oracle Banking Installer** **ORACLE**  
INSTALLER


Property file Creation - EMS FTP/FTPS  
Option for Scheduler EMS FTP/FTPS configuration

No.	Name	Value
1	File TransferMode FTPS	SFTP
2	Server	10.10.10.10
3	User id	OFSS
4	Password	●●●●●●●●
5	KnownHost file local folder path	/mnt/ems/SFTP/
6	KnownHost file server folder path	/mnt/ems/SFTP/
7	File Type	.txt
8	SWIFT Format	1
9	SWIFT Message Delimiter	<input checked="" type="checkbox"/>
10	SWIFT Message Terminator	<input checked="" type="checkbox"/>
11	MEDIA	SWIFT

Option for EMS -Structured Financial Messaging System configuration

No.	Name	Value
1	Signature Block	<input checked="" type="checkbox"/>
2	Keystore File Name	/keystore
3	Keystore Alias name	●●●●
4	Keystore Password	●●●●

**Table 1-12 EMS FTP/FTPS Properties**

Field	Description
<b>File Transfer Mode FTPS</b>	Specify the mode of transferring files to EMS. Enter one of the following: <ul style="list-style-type: none"> <li>• <b>FTPS</b> (FTP over SSL)</li> <li>• <b>SFTP</b>(Secure FTP)</li> <li>• <b>HTTP</b>(Hyper Text Transfer Protocol)</li> </ul> <div style="border: 1px solid #0070C0; padding: 5px; margin-top: 10px;">  <b>Note:</b> FTP is File Transfer Protocol </div>
<b>Server</b>	Specify the server IP address for the selected file transfer mode.
<b>User ID</b>	Specify the user ID to access the server of the file transfer mode.
<b>Password</b>	Specify the password to for the above user ID.
<b>Known Hosts Local Folder path</b>	Specify the local path for known hosts file generation. This is required only when File transfer mode is SFTP.
<b>Known Hosts server folder path</b>	Specify the server path for known hosts file pick-up. This is required only when File transfer mode is SFTP. Copy the generated known hosts file to the given server path.
<b>File Type</b>	Specify the type of file that is transferred. By default, the Installer sets it as <b>.txt</b> .
<b>SWIFT FORMAT</b>	Specify the SWIFT format.
<b>SWIFT Message Delimiter</b>	Specify the character which is used as the message delimiter.
<b>SWIFT Message Terminator</b>	Specify the character which is used as the message terminator.

Once you have specified the above details, Specify the EMS- Structured Financial Messaging System configuration details:

**Table 1-13 EMS- Structured Financial Messaging System**

Field	Description
<b>Signature Block</b>	Select this check box to enable signature block.
<b>Keystore File Name</b>	Specify the keystore file name.
<b>Keystore Alias Name</b>	Specify the keystore alias name.
<b>Keystore Password</b>	Specify the keystore password.

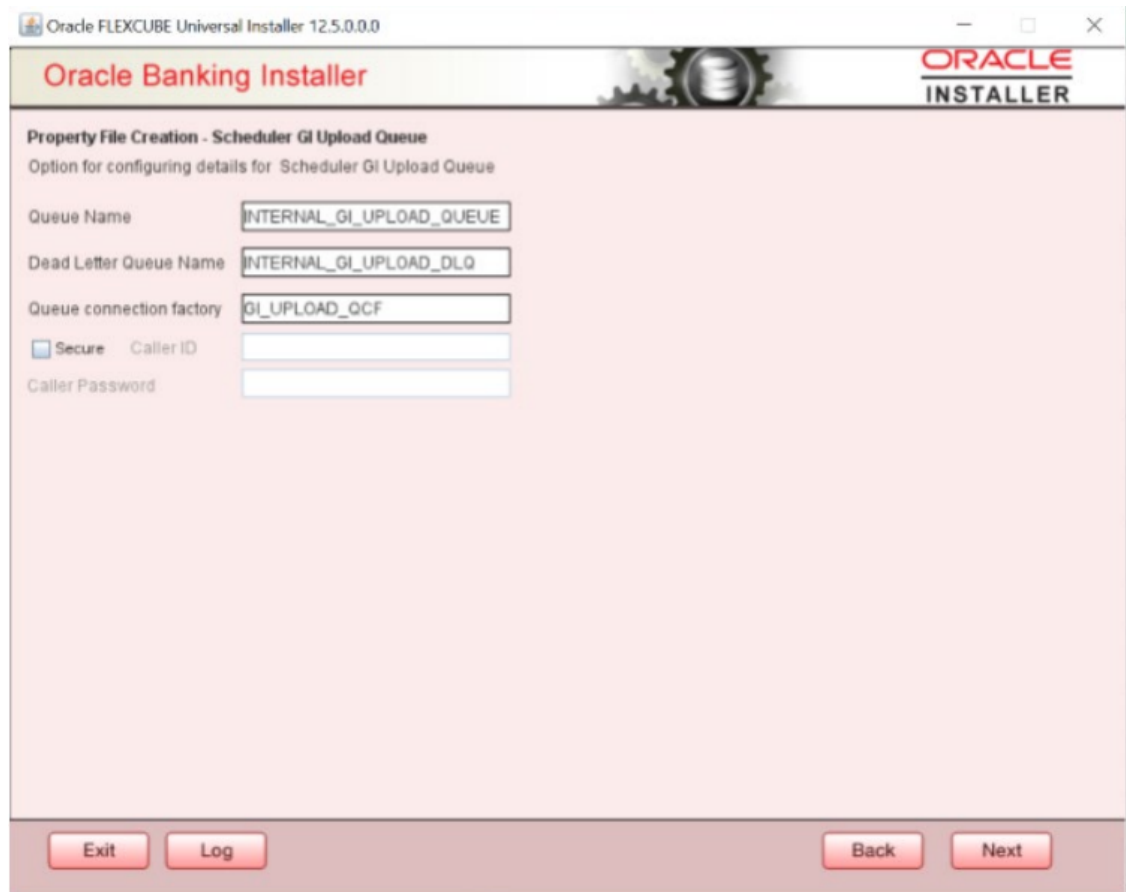
Once you have specified the above details, click **Next** and system displays the next screen.

This topic has the following sub-topic:

- [Setting Scheduler GI Upload Queue Properties](#)

## 1.8.1 Setting Scheduler GI Upload Queue Properties

**Figure 1-18** Setting Scheduler GI Upload Queue Properties



The screenshot shows the Oracle Banking Installer window titled "Oracle FLEXCUBE Universal Installer 12.5.0.0.0". The main window title is "Oracle Banking Installer" with the Oracle logo and "ORACLE INSTALLER" in the top right. The content area is titled "Property File Creation - Scheduler GI Upload Queue" and includes the subtitle "Option for configuring details for Scheduler GI Upload Queue". The configuration fields are as follows:

Queue Name	INTERNAL_GI_UPLOAD_QUEUE	
Dead Letter Queue Name	INTERNAL_GI_UPLOAD_DLQ	
Queue connection factory	GI_UPLOAD_QCF	
<input type="checkbox"/> Secure	Caller ID	
	Caller Password	

At the bottom of the window, there are four buttons: "Exit", "Log", "Back", and "Next".

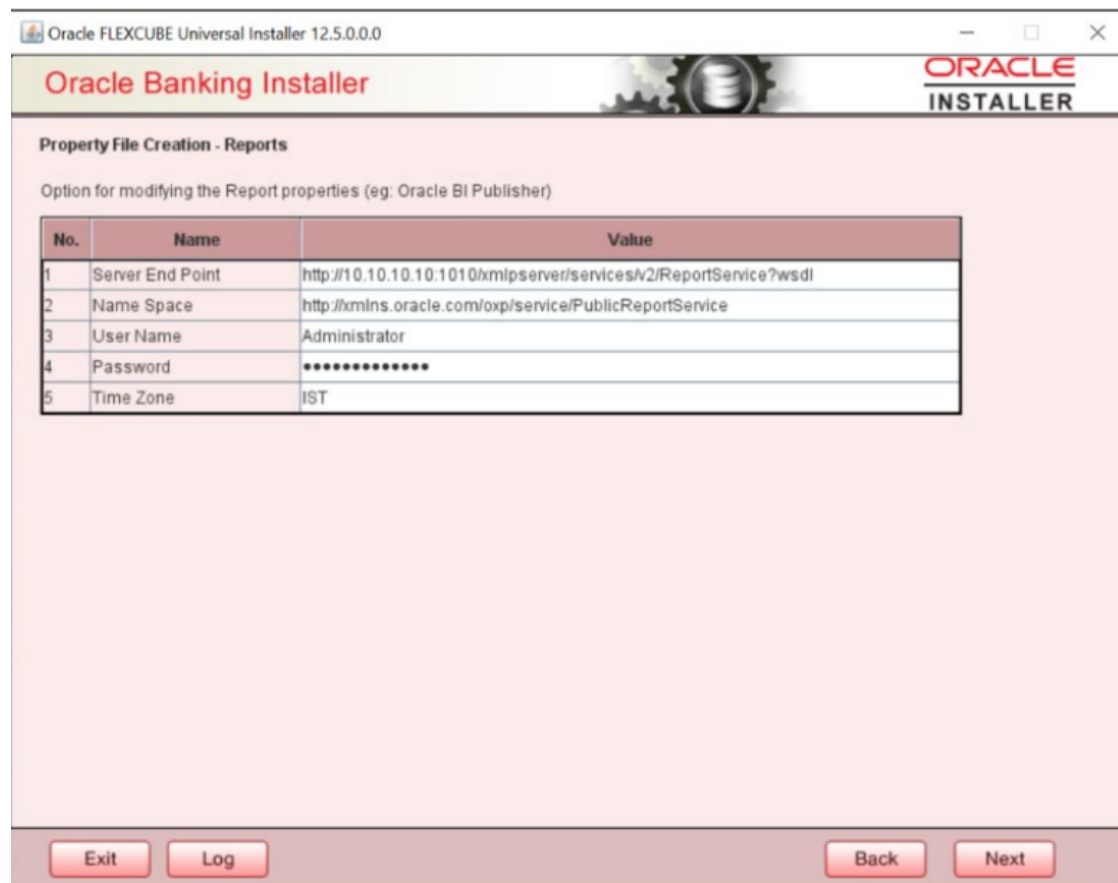
Once you have specified the above details, click **Next** and system displays the next screen.

## 1.9 Setting Reports details

For Report properties, this table is enabled only if REPORTS\_ENABLED plug-in is selected.



Figure 1-19 Setting Reports Details



Specify the following details:

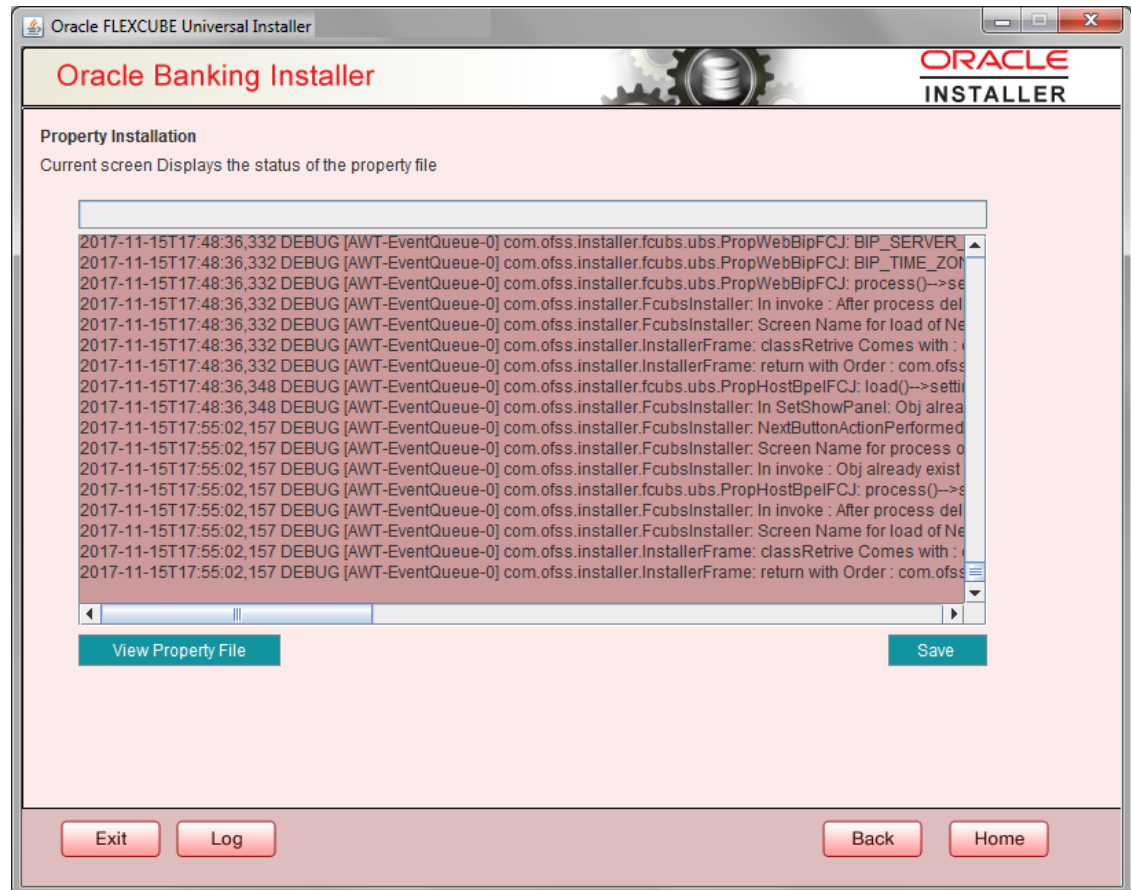
Table 1-14 Reports details

Field	Description
<b>Server End Point</b>	Specify the end point. However, you need to change the IP and port where Application is installed. WSDL URL gets modified based on "Server Version".
<b>Name Space</b>	Specify the name space. By default, the installer displays <i>http://xmlns.oracle.com/oxp/service/PublicReportService</i> .
<b>User Name</b>	Specify the user name. By default, the Installer displays <b>Administrator</b> .
<b>Password</b>	Specify the password for the above user name. By default, the Installer sets it as <b>Administrator</b> .
<b>Time Zone</b>	Specify the time zone of the Reports server.

## 1.10 Saving Property File

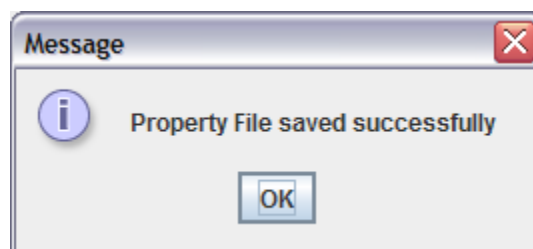
After completing all the required settings explained above, you need to save the property file.

Figure 1-20 Saving Property File



You can view the status of property file creation in the above screen. Once the file is saved, the installer displays the following message:

Figure 1-21 Message Details



This completes the properties file creation. Along with the property file creation, env.properties file is also generated in \INSTALLER\SOFT\GUI\logs path and is automatically copied to \INSTALLER\SOFT\logs folder.

 **Note:**

Env.properties file parameters gets updated during every property file creation (like FCUBS, Gateway, Scheduler, and son on ). After Property file creation, proceed with respective EAR build and then proceed with other components property file creations and build.

Also OracleIPMAdapter.properties is generated in same path as fcubs.properties when IPM plug-in is enabled.

# Index

## C

---

Configuring Scheduler, [1-20](#)  
Creating Property File, [1-1](#)  
Custom Installation, [1-11](#)

## S

---

Saving Property File, [1-28](#)

Setting General Properties, [1-11](#)  
Setting Reports details, [1-27](#)  
Setting Scheduler EMS Properties, [1-23](#)  
Setting Scheduler GI Upload Queue Properties,  
[1-27](#)  
Setting Single Sign on, [1-15](#)  
Setting SMTPS/DMS details, [1-18](#)