

# Oracle® Banking Treasury Management

## Standalone Scheduler Property File Creation Guide



Release 14.7.4.0.0

G10909-01

June 2024

The Oracle logo, consisting of a solid red square with the word "ORACLE" in white, uppercase, sans-serif font centered within it.

ORACLE®

Copyright © 2020, 2024, Oracle and/or its affiliates.

This software and related documentation are provided under a license agreement containing restrictions on use and disclosure and are protected by intellectual property laws. Except as expressly permitted in your license agreement or allowed by law, you may not use, copy, reproduce, translate, broadcast, modify, license, transmit, distribute, exhibit, perform, publish, or display any part, in any form, or by any means. Reverse engineering, disassembly, or decompilation of this software, unless required by law for interoperability, is prohibited.

The information contained herein is subject to change without notice and is not warranted to be error-free. If you find any errors, please report them to us in writing.

If this is software, software documentation, data (as defined in the Federal Acquisition Regulation), or related documentation that is delivered to the U.S. Government or anyone licensing it on behalf of the U.S. Government, then the following notice is applicable:

U.S. GOVERNMENT END USERS: Oracle programs (including any operating system, integrated software, any programs embedded, installed, or activated on delivered hardware, and modifications of such programs) and Oracle computer documentation or other Oracle data delivered to or accessed by U.S. Government end users are "commercial computer software," "commercial computer software documentation," or "limited rights data" pursuant to the applicable Federal Acquisition Regulation and agency-specific supplemental regulations. As such, the use, reproduction, duplication, release, display, disclosure, modification, preparation of derivative works, and/or adaptation of i) Oracle programs (including any operating system, integrated software, any programs embedded, installed, or activated on delivered hardware, and modifications of such programs), ii) Oracle computer documentation and/or iii) other Oracle data, is subject to the rights and limitations specified in the license contained in the applicable contract. The terms governing the U.S. Government's use of Oracle cloud services are defined by the applicable contract for such services. No other rights are granted to the U.S. Government.

This software or hardware is developed for general use in a variety of information management applications. It is not developed or intended for use in any inherently dangerous applications, including applications that may create a risk of personal injury. If you use this software or hardware in dangerous applications, then you shall be responsible to take all appropriate fail-safe, backup, redundancy, and other measures to ensure its safe use. Oracle Corporation and its affiliates disclaim any liability for any damages caused by use of this software or hardware in dangerous applications.

Oracle®, Java, MySQL, and NetSuite are registered trademarks of Oracle and/or its affiliates. Other names may be trademarks of their respective owners.

Intel and Intel Inside are trademarks or registered trademarks of Intel Corporation. All SPARC trademarks are used under license and are trademarks or registered trademarks of SPARC International, Inc. AMD, Epyc, and the AMD logo are trademarks or registered trademarks of Advanced Micro Devices. UNIX is a registered trademark of The Open Group.

This software or hardware and documentation may provide access to or information about content, products, and services from third parties. Oracle Corporation and its affiliates are not responsible for and expressly disclaim all warranties of any kind with respect to third-party content, products, and services unless otherwise set forth in an applicable agreement between you and Oracle. Oracle Corporation and its affiliates will not be responsible for any loss, costs, or damages incurred due to your access to or use of third-party content, products, or services, except as set forth in an applicable agreement between you and Oracle.

# Contents

## Preface

---

|                            |    |
|----------------------------|----|
| Audience                   | iv |
| Acronyms and Abbreviations | iv |
| Related Resources          | iv |

## 1 Create Property File for Standalone scheduler

---

|       |                                 |      |
|-------|---------------------------------|------|
| 1.1   | Creating Property File          | 1-1  |
| 1.1.1 | Setting General Properties      | 1-5  |
| 1.1.2 | Single Sign On                  | 1-7  |
| 1.1.3 | SMTPS Details                   | 1-8  |
| 1.1.4 | Configuring Scheduler Queues    | 1-8  |
| 1.1.5 | Setting EMS FTP/FTPS Properties | 1-12 |
| 1.1.6 | Setting BIP/GI Upload Queue     | 1-13 |
| 1.1.7 | Setting Report Properties       | 1-14 |
| 1.1.8 | Saving Property File            | 1-16 |

# Preface

This manual explains the steps to create property file for Standalone Scheduler.

The images used in the documentation are of illustration purpose and need to be used only for reference.

This preface has the following topics:

- [Audience](#)
- [Acronyms and Abbreviations](#)
- [Related Resources](#)

## Audience

This guide is intended for anyone responsible for installing Oracle Banking Application.

## Acronyms and Abbreviations

The acronyms and abbreviations are listed in this below table:

**Table 1 Acronyms and Abbreviations**

| Abbreviations or Acronyms | Definition                         |
|---------------------------|------------------------------------|
| DV                        | Derivatives                        |
| ETD                       | Exchange Traded Derivatives        |
| FX                        | Foreign Exchange                   |
| MM                        | Money Market                       |
| OBTR                      | Oracle Banking Treasury Management |
| ODT                       | Open Development Tool              |
| OT                        | Over the Counter Options           |
| SE                        | Securities                         |
| SR                        | Securities Repo                    |

## Related Resources

For more information, see these Oracle Banking Treasury Management resources:

- *Oracle Banking Treasury Management Release Notes*
- *Oracle Banking Treasury Management Installer Index*
- *Oracle Banking Treasury Management Installer Prerequisite*

# 1

## Create Property File for Standalone scheduler

This chapter explains the steps to create property file for Standalone Scheduler.

This topic has the following sub-topics:

- [Creating Property File](#)  
This topic describes how to create a property file.

### 1.1 Creating Property File

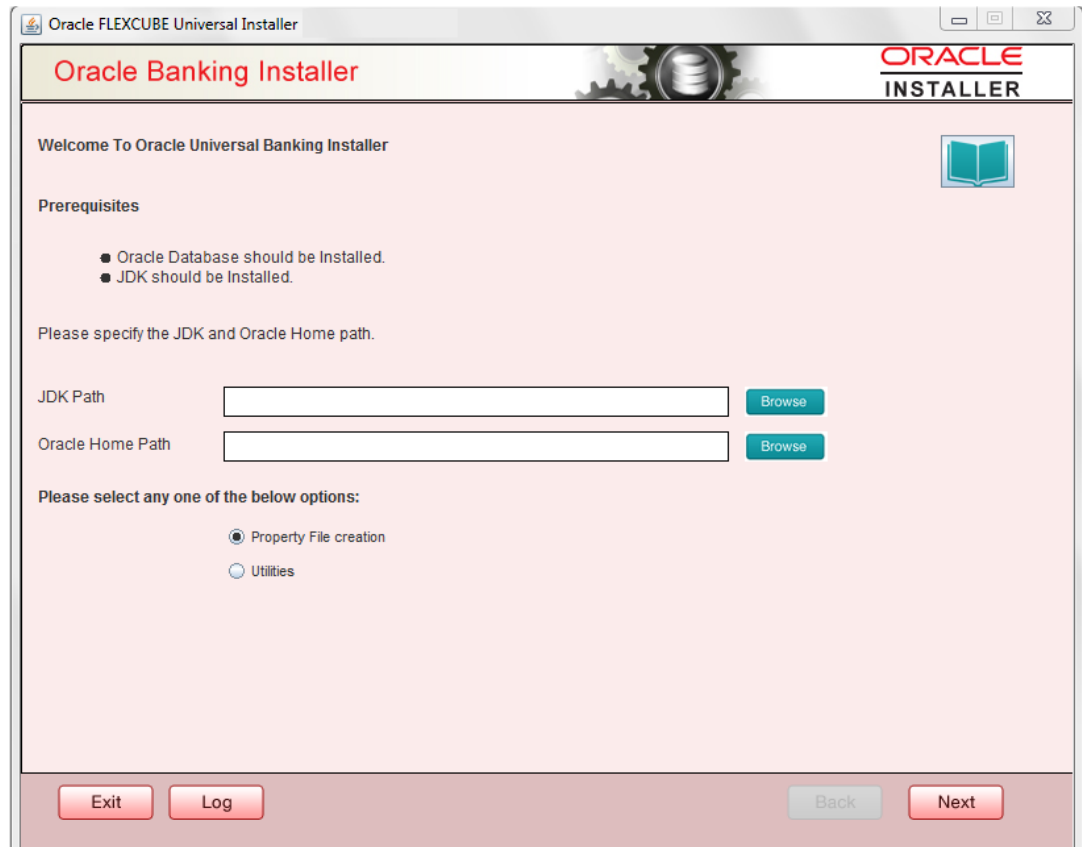
This topic describes how to create a property file.

To create the property file for Oracle Banking Treasury Management Standalone Scheduler, follow the steps given below:

1. Launch Oracle Banking Treasury Management Universal Banking Solution Installer. Select **Property File Creation** option and click the **Next** button.

The system displays the **Oracle Banking Installer** screen.

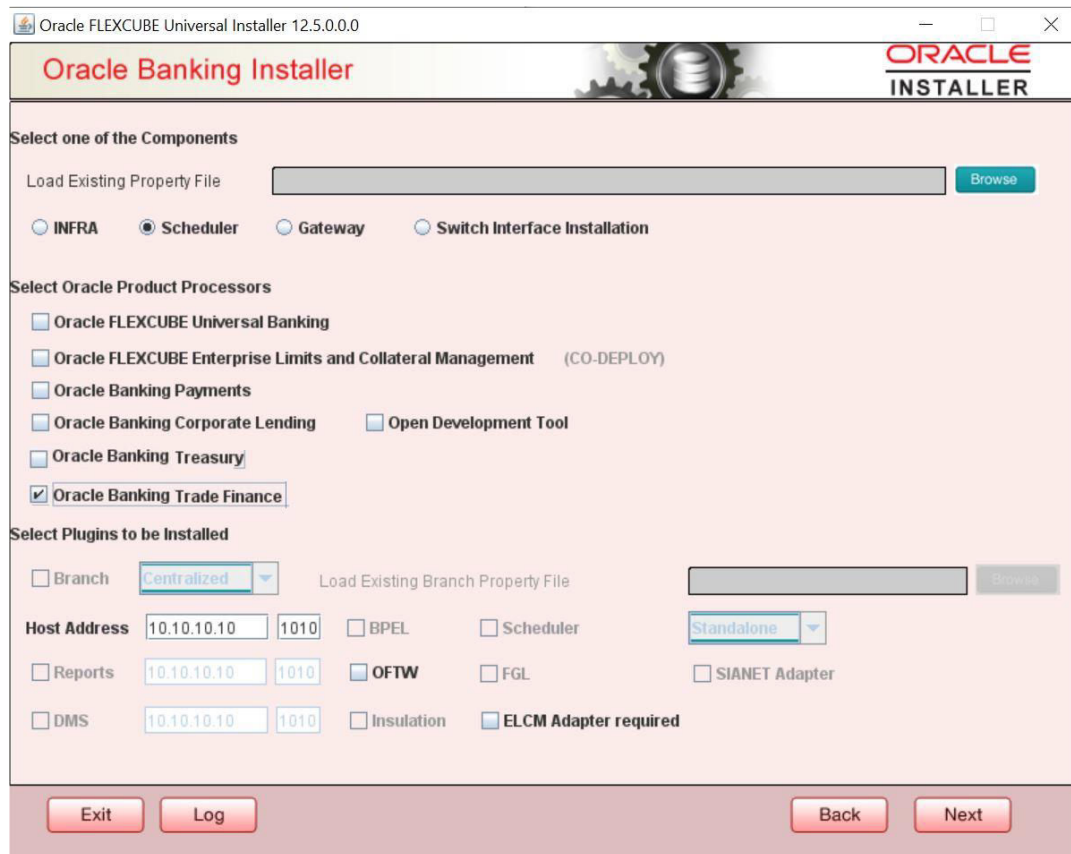
**Figure 1-1 Oracle Banking Installer**



2. Select the **Scheduler** component option and appropriate plugin if needed and click 'Next' button.

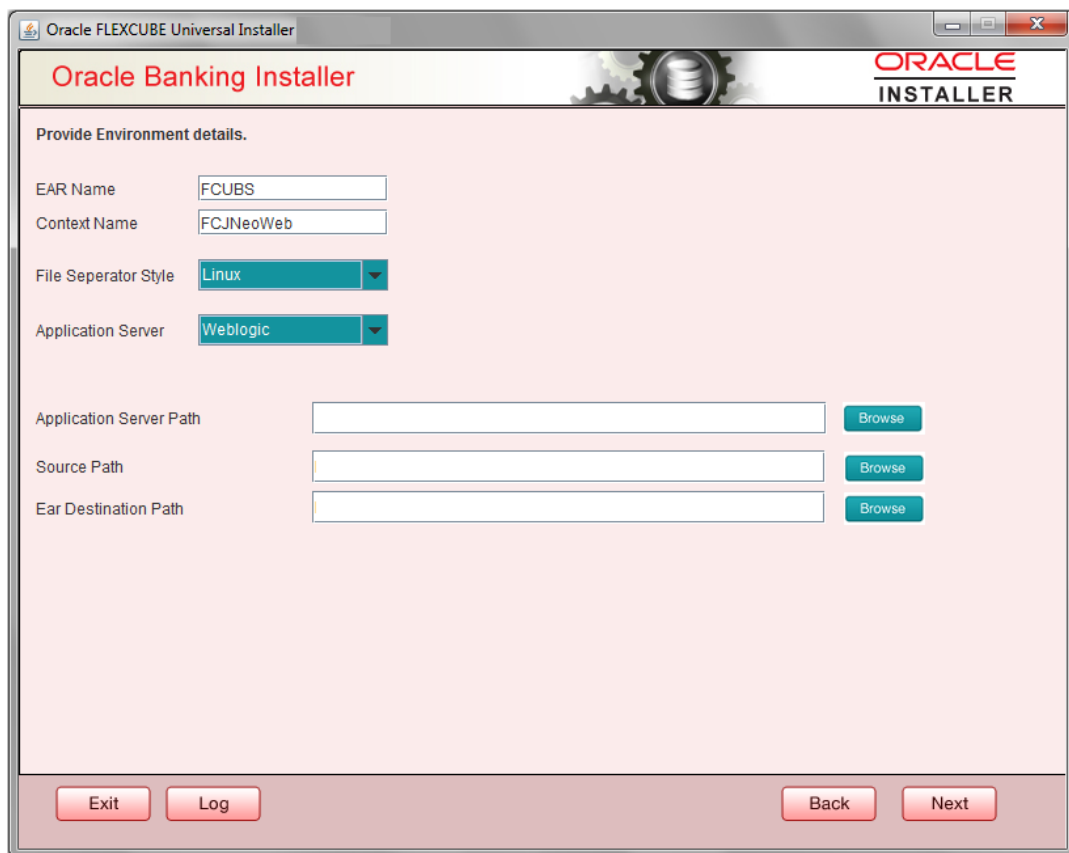
The **Oracle Banking Installer** with **Scheduler** fields is displayed.

**Figure 1-2 Scheduler**



3. Specify the field details in the displayed screen. Enter the **EAR Name**

**Figure 1-3 EAR**



**Table 1-1 Field description**

| Fields                         | Description   |
|--------------------------------|---|
| <b>EAR Name</b>                | Enter the <b>EAR Name</b> .                                 |
| <b>Context Name</b>            | Enter the <b>Context Name</b> .                             |
| <b>File Separator Style</b>    | Select the <b>File Separator Style</b> from drop down list. |
| <b>Application Server</b>      | Select the <b>Application Server</b> from drop down list.   |
| <b>Application Server Path</b> | Click <b>Browse</b> to select the Application Server Pat.   |
| <b>Source Path</b>             | Click <b>Browse</b> to select the Source Path.              |
| <b>EAR Destination Path</b>    | Click <b>Browse</b> to select the EAR Destination Path.     |

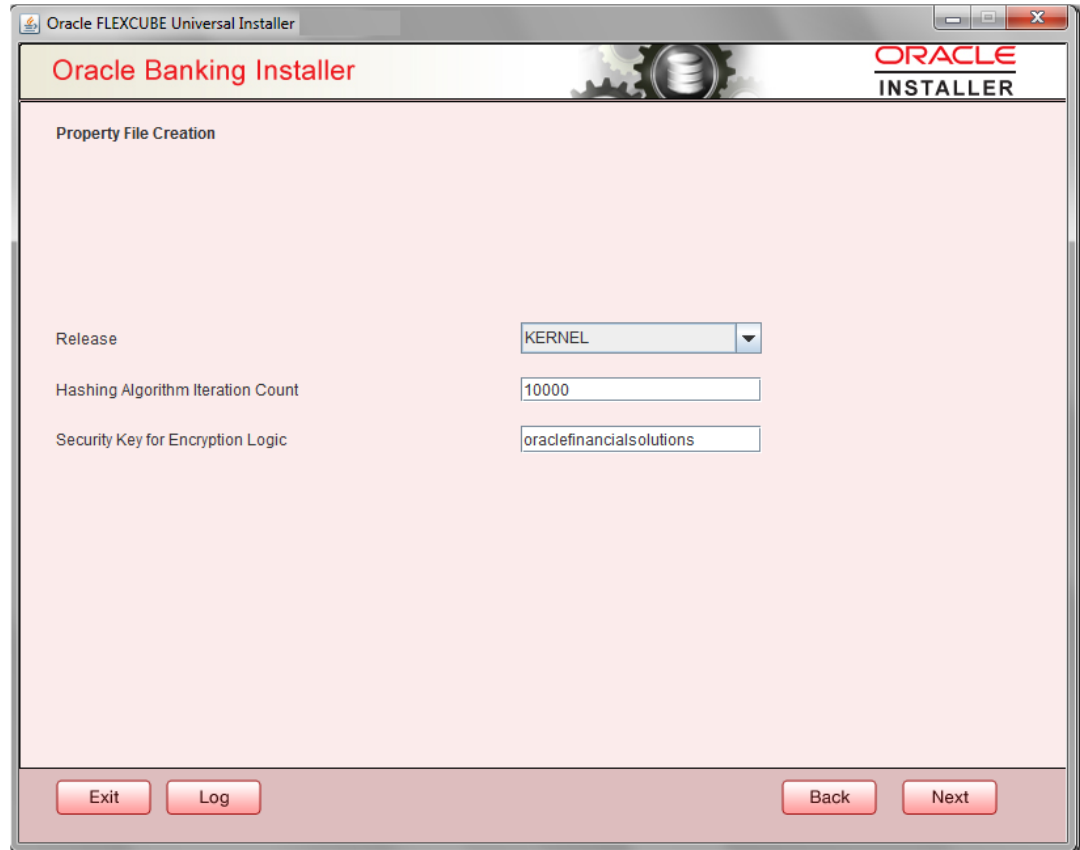
- Click on **Next** button to navigate to below Screen.

**Table 1-2 Property File Creation - Field description**

| Fields                                   | Description   |
|--|---|
| <b>Release</b>                           | Select the release from the adjoining drop down list.       |
| <b>Hashing Algorithm Iteration Count</b> | Enter the Hashing Algorithm Iteration Count for encryption. |
| <b>Security key for Encryption Logic</b> | Enter the Security Key for encryption logic.                |

- Click on **Next** button to navigate to **DataSource** Screen.

**Figure 1-4 Property File Creation: DataSource**



6. Enter JNDI value for the Datasources enabled and click on the **Next** button.  
The **Property File Creation DataSource** screen is displayed.



Figure 1-5 Property File Creation Datasource

Oracle FLEXCUBE Universal Installer

Oracle Banking Installer

ORACLE  
INSTALLER

Property File Creation - DataSource

Please enter DataSource Names

SMS Data Source

Branch Data Source

Scheduler Data Source

ELCM Data Source

OFCL Data Source

PM Online JNDI

PM Batch JNDI

ELCM Webservices Provider URL

Host Server URL

Standalone Scheduler URL

Exit Log Back Next

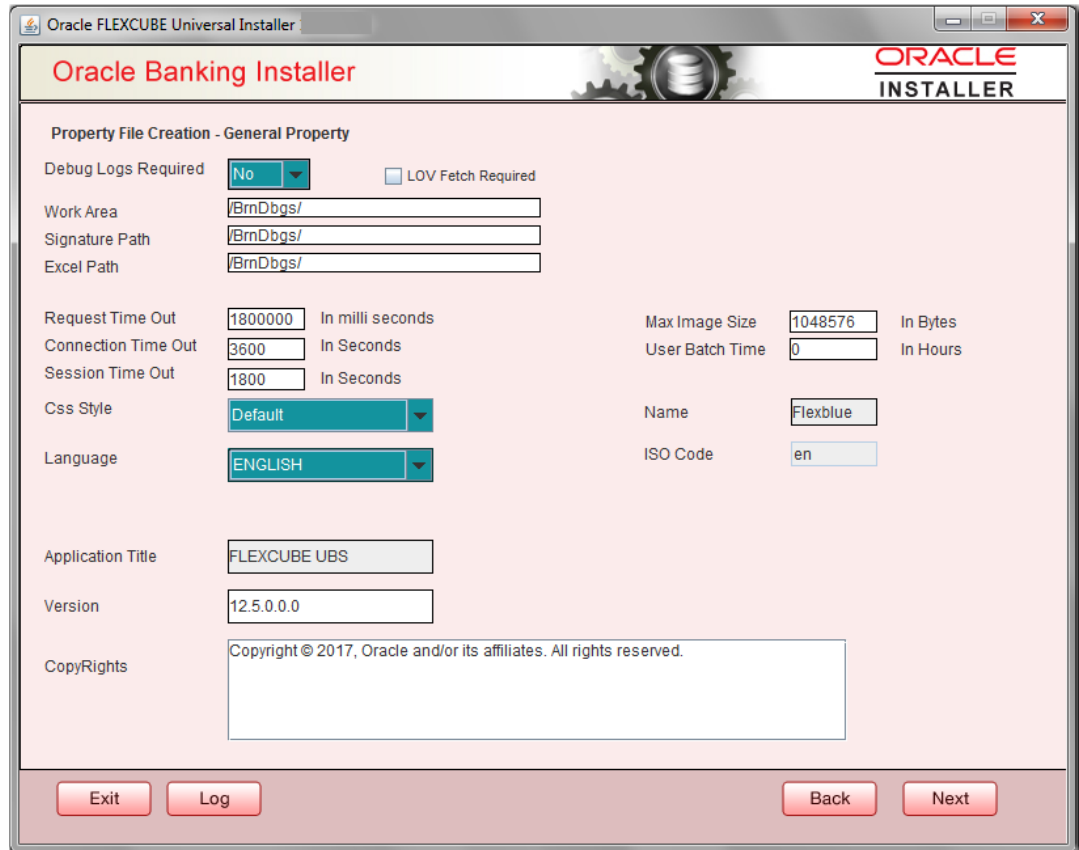
- [Setting General Properties](#)
- [Single Sign On](#)
- [SMTPS Details](#)
- [Configuring Scheduler Queues](#)
- [Setting EMS FTP/FTPS Properties](#)
- [Setting BIP/GI Upload Queue](#)
- [Setting Report Properties](#)
- [Saving Property File](#)

### 1.1.1 Setting General Properties

This section describes the process of setting common properties of Standalone Installer.

- The installer displays the **General Properties** screen.

**Figure 1-6 General Properties**



**Table 1-3 Field description**

| Field                      | Description   |
|----------------------------|---|
| <b>Debug Logs Required</b> | If you require debug option, select 'Yes' from the drop-down list. If you do not require debug option, select 'No'.   |
| <b>Work Area</b>           | Specify the work area.<br>For example: D:\BrnDbgs\  |
| <b>Signature Path</b>      | Specify the location at which the signature images are placed.  |
| <b>Excel Path</b>          | Specify the location at which the excel files are generated.  |
| <b>Request Time Out</b>    | Specify the database request timeout value in milli seconds. This is the maximum number of seconds the database waits for a query to return the result.   |
| <b>Connection Time Out</b> | Specify the database connection timeout value in seconds. This is the maximum number of seconds the application waits for a connection to the database to open.   |
| <b>Session Time Out</b>    | Enter the session time out value in seconds. This is the maximum number of seconds during which the application gets active without any user intervention. If there is no user intervention continuously for the duration specified here, the user session gets expire. |

**Table 1-3 (Cont.) Field description**

| Field                     | Description  |
|---------------------------|--|
| <b>LOV Fetch Required</b> | If you check this box, the option lists in Oracle Banking Treasury Management displays the matching values based on the first three characters that you enter in a field. If you specify the first three characters of a value to be entered in an option list and tab out, the system displays the complete list of values that are matching the first three characters.<br><br>If you do not check this, option lists does not show the matching values based on the first few characters. You need to specify the complete value against the field. |
| <b>CSS style</b>          | Select Default or Custom from dropdown. By Default CSS Style name will be 'flexblue'.  |
| <b>Language</b>           | Select language from the dropdown.<br><br>Version and Copyright are other general properties.<br><br>Click on Next button, once all the property details are entered.  |

## 1.1.2 Single Sign On

Only **OPSS Available** option will be enabled for Scheduler. Select the option if needed.

**Figure 1-7 PropertyFile Creation- Single sign on**

Property File Creation - Single Sign on

SSO Required  SSO Type: DEFAULT

SSO KEY: DN

Authentication details maintained external to FLEXCUBE

External Password Required  Authentication Type: MSAD

External User Login Required

OPSS Available

Option to provide LDAP server details

| No. | Name                         | Value                    |
|-----|------------------------------|--------------------------|
| 1   | LDAP SERVER URL              | LDAP://10.10.10.111      |
| 2   | LDAP SSL ENABLED             | <input type="checkbox"/> |
| 3   | SECURITY AUTHENTICATION TYPE | Simple                   |
| 4   | DOMAIN NAME                  | I-FLEX.COM               |
| 5   | LDAP SERVER TIMEOUT          | 0                        |

Option to provide SAML details

| No. | Name                      | Value  |
|-----|---------------------------|--|
| 1   | SAML CERTIFICATE PATH     | D:\Security\SAML_Implementation\TestFiles\certcertstore\b... |
| 2   | SAML CERTIFICATE PASSWORD | *****  |
| 3   | SAML CERTIFICATE ALIAS    | barc   |
| 4   | SAML VALID AUDIENCE       | bPAID_BWSIT  |

Exit Log Back Next

## 1.1.3 SMTPS Details

SMTPS mail configuration is enabled for Scheduler.

Host: Specify the SMTP host name.

User ID: Specify the user ID.

User Password: Specify the user password.

JNDI Name: Specify the JNDI name.

**Figure 1-8 SMTPS/DMS**

**Property File Creation - SMTPS/Branch/DMS**

Option for Mail configuring using SMTPS Protocol

| No. | Name          | Value          |
|-----|---------------|----------------|
| 1   | Host          | samplemail.com |
| 2   | User Id       | infra          |
| 3   | User Password | *****          |
| 4   | JNDI Name     | mail/FCUBSMail |

Option for modifying the Branch properties

| No. | Name               | Value                               |
|-----|--------------------|-------------------------------------|
| 1   | Date Separator     | -                                   |
| 2   | WorkFlow Frequency | 6000                                |
| 3   | Compress Request   | <input checked="" type="checkbox"/> |

Option for modifying the DMS/IPM property values

| No. | Name                             | Value   |
|-----|----------------------------------|---|
| 1   | Login Service Address            | http://10.10.10.10:1010/imaging/ws/LoginService           |
| 2   | Document Service Address         | http://10.10.10.10:1010/imaging/ws/DocumentService        |
| 3   | Document Content Service Address | http://10.10.10.10:1010/imaging/ws/DocumentContentService |
| 4   | IPM User Name                    | testuser  |
| 5   | IPM Password                     | *****   |

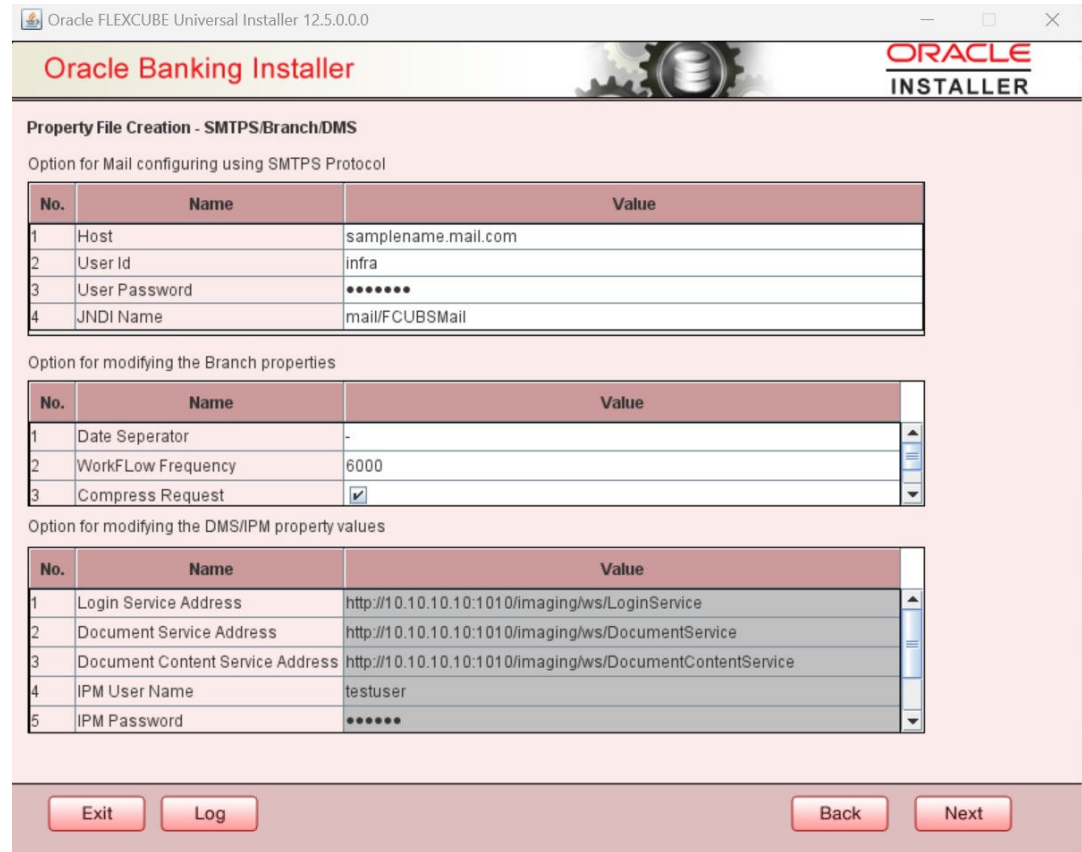
Buttons: Exit, Log, Back, Next

## 1.1.4 Configuring Scheduler Queues

This section describes the method to configure scheduler Queues.

1. In the displayed **Property File Creation - Scheduler Queues** screen, specify the fields.

**Figure 1-9 Property File Creation: Scheduler Queues**



**Table 1-4 Field Description: Property File Creation - Scheduler Queues**

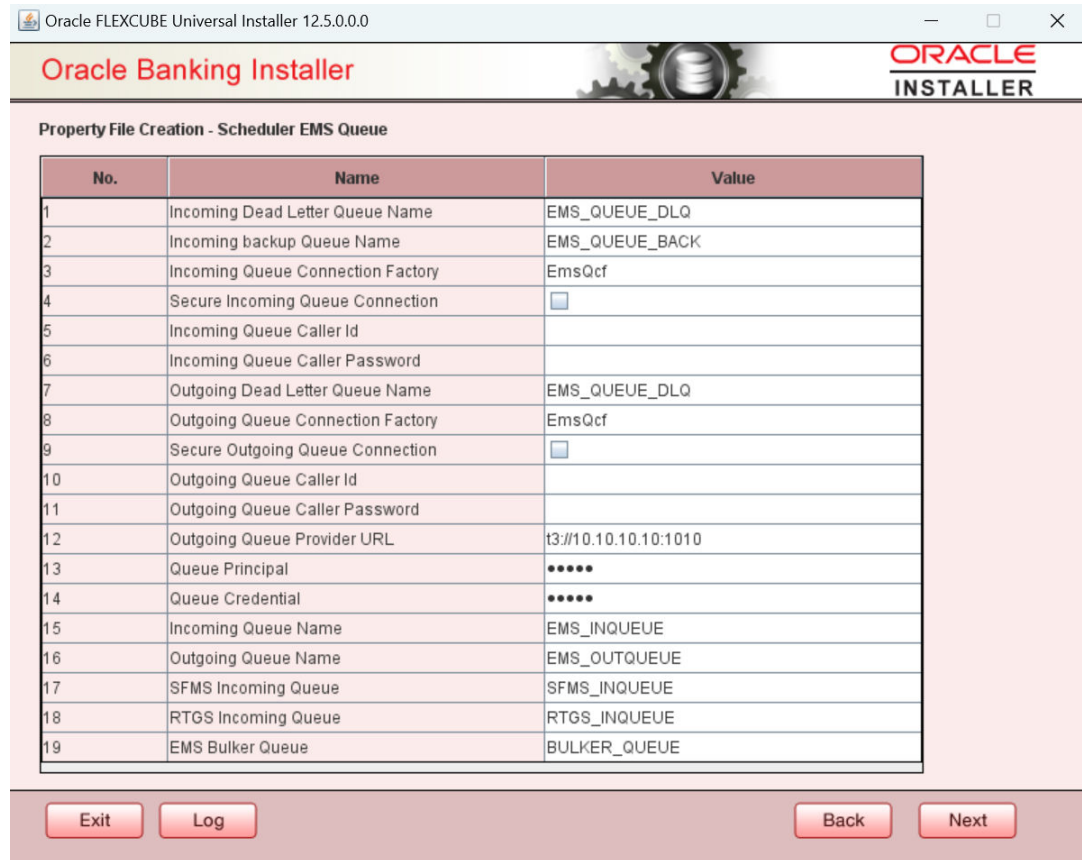
| Field                           | Description   |
|---------------------------------|---|
| <b>Notify Destination</b>       | Specify the notify destination. Select one of the following options: <ul style="list-style-type: none"> <li>• QUEUE</li> <li>• TOPIC</li> </ul>   |
| <b>Queue Name</b>               | Set 'NOTIFY_DEST_QUEUE' as the destination queue name.  |
| <b>Queue Connection Factory</b> | Set 'NotifyDestQCF' as the queue connection factory   |
| <b>Secure</b>                   | Check this box to indicate that it is a secured queue connection factory. If you check this box, the caller ID and caller password will be enabled.   |
| <b>Caller ID</b>                | Specify the caller ID for the secured queue connection factory.   |
| <b>Caller Password</b>          | Specify the password for the caller ID to access the secured queue connection factory.<br><br>If the queue connection factory is not secured, i.e., if you have not checked the box 'Secure', the installer will not display the fields 'Caller ID' and 'Caller Password'. You need not provide these details in that case. |

**Table 1-4 (Cont.) Field Description: Property File Creation - Scheduler Queues**

| Field                                    | Description  |                    |                                 |                 |  |               |   |
|--|--|--------------------|---------------------------------|-----------------|--|---------------|---|
| <b>Notify Queue Location</b>             | <p>Specify the notify queue location. Select one of the following options:</p> <ul style="list-style-type: none"> <li>Internal</li> <li>External</li> </ul> <p>For Oracle WebLogic application server, the notify queue location should be selected as 'Internal'.</p> <p>If you choose 'External' following details for the external queue will be enabled</p>  |                    |                                 |                 |  |               |   |
| <b>Provider URL</b>                      | <p>Specify the provide URL (iiop://localhost:1010).<br/>1010 is the default IIOp port.</p> <p><b>Table 1-5 Server Details</b></p> <table border="1"> <thead> <tr> <th>Application Server</th> <th>EMS Out Initial Context Factory</th> </tr> </thead> <tbody> <tr> <td>Oracle WebLogic</td> <td>t3://&lt;ip_address&gt;:port For example:<br/>t3://10.10.10.10:1010 Here, 10.10.10.10 represents the local host and 1010 to the target server default port (AdminServer/ManagedServer).</td> </tr> <tr> <td>IBM WebSphere</td> <td>iiop://&lt;ip_address&gt;:port For example: iiop://<br/>10.10.10.10:1010 Here, 1010 represents the default iiop port</td> </tr> </tbody> </table> | Application Server | EMS Out Initial Context Factory | Oracle WebLogic | t3://<ip_address>:port For example:<br>t3://10.10.10.10:1010 Here, 10.10.10.10 represents the local host and 1010 to the target server default port (AdminServer/ManagedServer). | IBM WebSphere | iiop://<ip_address>:port For example: iiop://<br>10.10.10.10:1010 Here, 1010 represents the default iiop port |
| Application Server                       | EMS Out Initial Context Factory  |                    |                                 |                 |  |               |   |
| Oracle WebLogic                          | t3://<ip_address>:port For example:<br>t3://10.10.10.10:1010 Here, 10.10.10.10 represents the local host and 1010 to the target server default port (AdminServer/ManagedServer).   |                    |                                 |                 |  |               |   |
| IBM WebSphere                            | iiop://<ip_address>:port For example: iiop://<br>10.10.10.10:1010 Here, 1010 represents the default iiop port  |                    |                                 |                 |  |               |   |
| <b>Security Principal</b>                | Specify the login ID to access the application server.   |                    |                                 |                 |  |               |   |
| <b>Security Credentials</b>              | Specify the password to access the application server.<br>Click 'Next' to proceed with scheduler configuration..   |                    |                                 |                 |  |               |   |
| <b>Notify Deferred Queue Name</b>        | Set 'DEFERRED_DEST_QUEUE' as the notify differed queue name.   |                    |                                 |                 |  |               |   |
| <b>Deferred Queue Connection Factory</b> | Set 'DeferredDestQcf' as the deferred queue connection factory.  |                    |                                 |                 |  |               |   |
| <b>Secure</b>                            | <p>Check this box to indicate that it is a secured deferred queue connection factory. If you check this box, caller ID and caller password will be enabled.</p> <p>Specify the caller ID and caller password for the secured deferred queue connection factory.</p>  |                    |                                 |                 |  |               |   |
| <b>Notify Queue Name</b>                 | Set 'NOTIFY_QUEUE' as the notify queue name.   |                    |                                 |                 |  |               |   |
| <b>Dead Letter Queue Name</b>            | Set 'NOTIFY_QUEUE_DLQ' as the dead letter queue name.  |                    |                                 |                 |  |               |   |
| <b>Notify Queue Connection Factory</b>   | Set 'NOTIFY_MDB_QCF' as the notify queue connection factory.   |                    |                                 |                 |  |               |   |
| <b>Secure</b>                            | <p>Check this box to indicate that it is a secured notify internal Queue. If you check this box, caller ID and caller password will be enabled.</p> <p>Specify the caller ID and caller password for the secured notify queue connection factory.</p>  |                    |                                 |                 |  |               |   |

2. Click **Next** and the following screen is displayed:

**Figure 1-10 Scheduler EMS Queue**



**Table 1-6 Field Description**

| Field                                    | Description  |
|--|--|
| <b>Incoming Dead Letter Queue Name</b>   | Set 'EMS_QUEUE_DLQ' as the incoming dead letter queue name.                |
| <b>Incoming Backup Queue Name</b>        | Set 'EMS_QUEUE_BACK' as the incoming backup queue name.                    |
| <b>Incoming Queue Connection Factory</b> | Set 'EmsQcf' as the incoming queue connection factory.                     |
| <b>Secure Incoming Queue Connection</b>  | Check this box to indicate that it is a secured queue connection.          |
| <b>Incoming Queue Caller ID</b>          | Specify the caller ID for the secured queue connection.                    |
| <b>Incoming Queue Caller Password</b>    | Specify the caller password for the secured queue connection.              |
| <b>Outgoing Dead Letter Queue Name</b>   | Set 'EMS_QUEUE_DLQ' as outgoing dead letter queue name.                    |
| <b>Outgoing Queue Connection Factory</b> | Set 'EmsQcf' as the outgoing queue connection factory.                     |
| <b>Secure Outgoing Queue Connection</b>  | Check this box to indicate that it is a secured outgoing queue connection. |
| <b>Outgoing Queue Caller ID</b>          | Specify the caller ID for the secured queue connection.                    |
| <b>Outgoing Queue Caller Password</b>    | Specify the caller Password for the secured queue connection.              |

**Table 1-6 (Cont.) Field Description**

| Field                              | Description   |
|------------------------------------|---|
| <b>Outgoing Queue Provider URL</b> | Specify the URL of the outgoing queue.  |
| <b>Queue Principal</b>             | Specify the queue principal.  |
| <b>Queue Credential</b>            | Specify the queue credential.   |
| <b>Incoming Queue Name</b>         | Specify the incoming queue name.  |
| <b>Outgoing Queue Name</b>         | Specify the outgoing queue name.  |
| <b>SFMS Incoming Queue</b>         | Specify the SFMS Incoming Queue.  |
| <b>RTGS Incoming Queue</b>         | Specify the RTGS incoming Queue.  |
| <b>EMS Bulker Queue</b>            | Specify the EMS Bulker Queue.<br>Once you have specified the above details, click 'Next' and system displays the next screen. |

## 1.1.5 Setting EMS FTP/FTPS Properties

Procedure for EMS FTP/FTPS configuration.

- In the displayed Property file Creation - EMS FTP/FTPS, specify the fields.

**Figure 1-11 Property file Creation - EMS FTP/FTPS**

Oracle FLEXCUBE Universal Installer 12.5.0.0.0

**Oracle Banking Installer** ORACLE INSTALLER

**Property file Creation - EMS FTP/FTPS**  
Option for Scheduler EMS FTP/FTPS configuration

| No. | Name                              | Value                               |
|-----|-----------------------------------|-------------------------------------|
| 1   | File TransferMode FTPS            | FTPS                                |
| 2   | Server                            | 10.10.10.10                         |
| 3   | User id                           | OFSS                                |
| 4   | Password                          | *****                               |
| 5   | KnownHost file local folder path  | /mnt/ems/SFTP/knownhosts/knownh...  |
| 6   | KnownHost file server folder path | /mnt/ems/SFTP/knownhosts/knownh...  |
| 7   | File Type                         | .txt                                |
| 8   | SWIFT Format                      | 1                                   |
| 9   | SWIFT Message Delimiter           | <input checked="" type="checkbox"/> |
| 10  | SWIFT Message Terminator          | <input checked="" type="checkbox"/> |
| 11  | MEDIA                             | SWIFT                               |

Option for EMS -Structured Financial Messaging System configuration

| No. | Name                | Value                               |
|-----|---------------------|-------------------------------------|
| 1   | Signature Block     | <input checked="" type="checkbox"/> |
| 2   | Keystore File Name  | /keystore                           |
| 3   | Keystore Alias name | ****                                |
| 4   | Keystore Password   | *****                               |

Exit Log Back Next



Table 1-7 Field Description

| Field                           | Description  |
|---------------------------------|--|
| <b>File Transfer Mode FTPS</b>  | Specify the mode of transferring files to EMS. Select one of the following: <ul style="list-style-type: none"> <li>• FTPS</li> <li>• SFTP</li> <li>• HTTP</li> </ul> |
| <b>Server</b>                   | Specify the server IP address for the selected file transfer mode.   |
| <b>User ID</b>                  | Specify the user ID to access the server of the file transfer mode.  |
| <b>Password</b>                 | Specify the password to for the above user ID.   |
| <b>File Type</b>                | Specify the type of file that is transferred. By default, the Installer sets it as '.txt'.   |
| <b>SWIFT Message Delimiter</b>  | Select check box if needed.  |
| <b>SWIFT Message Terminator</b> | Select check box if needed.  |
| <b>Media</b>                    | Specify the Media.   |
| <b>Signature Block</b>          | Check this box to enable signature block   |
| <b>Keystore File Name</b>       | Specify the keystore file name.  |
| <b>Keystore Alias Name</b>      | Specify the keystore alias name.   |
| <b>Keystore Password</b>        | Specify the keystore password.<br>Once you have specified the above details, click 'Next' and system displays the next screen.                                       |

## 1.1.6 Setting BIP/GI Upload Queue

This screen describes how to create the property file. Here, you need to set the BIP and BIP Advice report details.

- System displays the following screen:

Table 1-8 Property file Creation - Scheduler BIP/GI Upload Queue

| Field                                  | Description  |
|--|--|
| <b>BIP Queue Name</b>                  | Specify the BIP queue name as 'INTERNAL_BIPREPORT_QUEUE'.  |
| <b>BIP DeadLetter Queue Name</b>       | Specify the BIP deadletter queue name as 'INTERNAL_BIP_QUEUE_DLQ'.   |
| <b>BIPAdvice Queue Name</b>            | Specify the BIP advice queue name as 'INTERNAL_BIPADVREPORT_QUEUE'.  |
| <b>BIPAdvice DeadLetter Queue Name</b> | Specify the BIP advice dead letter queue name as 'INTERNAL_BIP_ADVICE_QUEUE_DLQ'.  |
| <b>Queue Connection Factory</b>        | Specify the queue connection factory as 'BIPQCF'.  |
| <b>Secure</b>                          | Check this box to indicate that it is a secured deferred queue connection factory. The caller ID and caller password will be enabled. Specify the caller ID and caller password for the secured queue connection factory.<br>Enter these values for GI Upload Queue. |
| <b>Queue Name</b>                      | Specify the queue name as 'INTERNAL_GI_UPLOAD_QUEUE'.  |

**Table 1-8 (Cont.) Property file Creation - Scheduler BIP/GI Upload Queue**

| Field                           | Description   |
|---------------------------------|---|
| <b>Dead Letter Queue Name</b>   | Specify the dead letter queue name as 'INTERNAL_GI_UPLOAD_DLQ'.   |
| <b>Queue Connection Factory</b> | Specify the queue connection factory as 'GI_UPLOAD_QCF'.  |
| <b>Secure</b>                   | Check this box to indicate that it is a secured deferred queue connection factory. The caller ID and caller password as shown in the following screen:<br><br>Specify the caller ID and caller password for the secured queue connection factory.<br><br>Once you have specified the above details, click 'Next' and system displays the next screen. |

## 1.1.7 Setting Report Properties

This section describes the methods to set report properties.

1. System displays the following screen:

**Figure 1-12 Property File Creation- Reports**

Oracle FLEXCUBE Universal Installer 12.5.0.0.0

**Oracle Banking Installer** ORACLE INSTALLER

**Property File Creation - Scheduler GI Upload Queue**  
Option for configuring details for Scheduler GI Upload Queue

Queue Name: INTERNAL\_GI\_UPLOAD\_QUEUE

Dead Letter Queue Name: INTERNAL\_GI\_UPLOAD\_DLQ

Queue connection factory: GI\_UPLOAD\_QCF

Secure    Caller ID: \_\_\_\_\_

Caller Password: \_\_\_\_\_

Exit    Log    Back    Next

Table 1-9 Field Description

| Field                           | Description   |
|---------------------------------|---|
| <b>Server End Point</b>         | Specify the BIP end point.<br>http://whf00blq:9502/xmlpserver/services/v2/ReportService?wsdl<br>However, you need to change the IP and port where BIP Application is installed. WSDL URL gets modified based on "BIP Server Version" on selecting the required version from the dropdown. |
| <b>Name Space</b>               | Specify the BIP name space. By default, the installer displays 'http://xmlns.oracle.com/oxp/service/PublicReportService'.   |
| <b>User Name</b>                | Specify the BIP user name. By default, the Installer displays 'Administrator'.  |
| <b>Password</b>                 | Specify the password for the above user name. By default, the Installer sets it as 'Administrator'.   |
| <b>Reports Spool Path</b>       | Specify the reports spool path. By default, the Installer displays / ReportsSpool   |
| <b>Advice Type</b>              | Specify the advice type. You can choose one of the following: <ul style="list-style-type: none"> <li>NATIVE - This advice type is used for generating advices in text format</li> <li>BIP - This advice type is used for generating advices in PDF format.</li> </ul>                     |
| <b>BIP Server Version</b>       | Specify the qualified BIP server version. You can select the appropriate one from the adjoining drop-down list - 10g/11g/12c  |
| <b>BIP Time Zone</b>            | Specify the time zone of the BIP server.<br>Specify the following details:  |
| <b>Factory Initial</b>          | Specify the factory initial.  |
| <b>Provider URL</b>             | Specify the URL of the server. Enter the IP address, target server port (AdminServer/ManagedServer) and the context root.   |
| <b>Security Principal</b>       | Specify the user name to access the application server where BPEL is installed.   |
| <b>Security Credential</b>      | Specify the password for the above user name.   |
| <b>Soa Partition Name</b>       | Specify the Soa Server Name. By default it will be the Installer sets it to 'default'.  |
| <b>Domain Password</b>          | Specify the domain password for which SOA server is extended  |
| <b>Dedicated Connection</b>     | Check this box to indicate that this connection is not used for other purposes.   |
| <b>BPEL Realm Name</b>          | Specify the BPEL realm name.  |
| <b>BAM URI</b>                  | Specify the BAM URI.  |
| <b>BPM Installed</b>            | Check this box if the BPM is installed.   |
| <b>BI User</b>                  | Specify the BI user.  |
| <b>BI Password</b>              | Specify the password for BI user.   |
| <b>External Alerts Required</b> | Check this box to enable External Alerts Required.  |
| <b>Enabling Load Balance</b>    | Check this box to enable BPEL load balance.   |
| <b>Frequency</b>                | Specify the balance load frequency.   |
| <b>Task Counts</b>              | Specify the balance load task count.  |
| <b>Cut-off Time</b>             | Specify the balance load cut-off time.  |

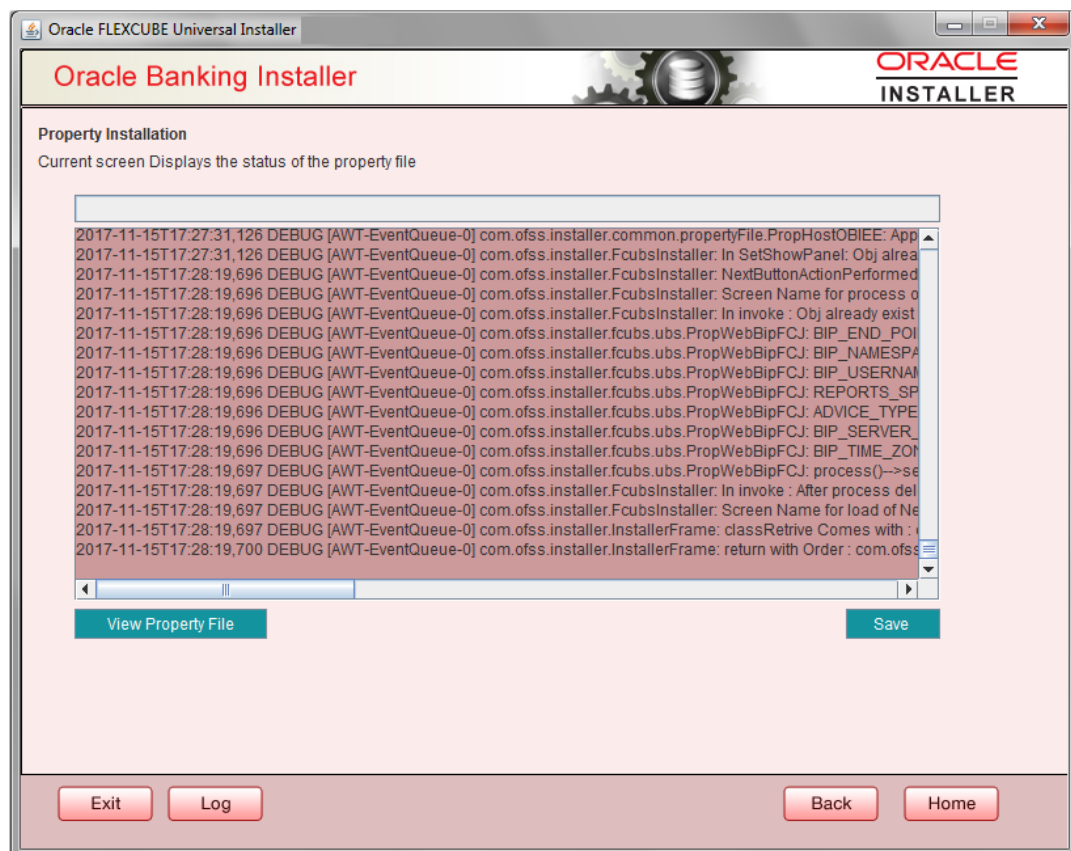
2. Once you have specified the above details, click 'Next' and system displays the next screen.

## 1.1.8 Saving Property File

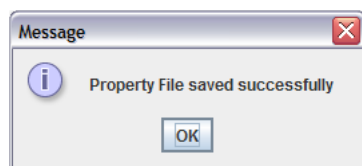
After completing all the required settings explained above, you need to save the property file.

1. Save the property file.

**Figure 1-13 Property Installation**



2. You can view the status of property file creation in the above screen. Once the file is saved, the installer displays the following message:  
Two property files: fcubs.properties and scheduler.properties are saved.



3. If you do not use the 'Save' or 'Save As' buttons, the installer will save the properties file in '<InstallerSources>\config\PropertyFiles' folder. In that case, you will see the message below.