

# Oracle® Banking Treasury Management

## Gateway Property File Creation



Release 14.7.5.0.0  
G16684-01  
September 2024

ORACLE®

Copyright © 2020, 2024, Oracle and/or its affiliates.

This software and related documentation are provided under a license agreement containing restrictions on use and disclosure and are protected by intellectual property laws. Except as expressly permitted in your license agreement or allowed by law, you may not use, copy, reproduce, translate, broadcast, modify, license, transmit, distribute, exhibit, perform, publish, or display any part, in any form, or by any means. Reverse engineering, disassembly, or decompilation of this software, unless required by law for interoperability, is prohibited.

The information contained herein is subject to change without notice and is not warranted to be error-free. If you find any errors, please report them to us in writing.

If this is software, software documentation, data (as defined in the Federal Acquisition Regulation), or related documentation that is delivered to the U.S. Government or anyone licensing it on behalf of the U.S. Government, then the following notice is applicable:

U.S. GOVERNMENT END USERS: Oracle programs (including any operating system, integrated software, any programs embedded, installed, or activated on delivered hardware, and modifications of such programs) and Oracle computer documentation or other Oracle data delivered to or accessed by U.S. Government end users are "commercial computer software," "commercial computer software documentation," or "limited rights data" pursuant to the applicable Federal Acquisition Regulation and agency-specific supplemental regulations. As such, the use, reproduction, duplication, release, display, disclosure, modification, preparation of derivative works, and/or adaptation of i) Oracle programs (including any operating system, integrated software, any programs embedded, installed, or activated on delivered hardware, and modifications of such programs), ii) Oracle computer documentation and/or iii) other Oracle data, is subject to the rights and limitations specified in the license contained in the applicable contract. The terms governing the U.S. Government's use of Oracle cloud services are defined by the applicable contract for such services. No other rights are granted to the U.S. Government.

This software or hardware is developed for general use in a variety of information management applications. It is not developed or intended for use in any inherently dangerous applications, including applications that may create a risk of personal injury. If you use this software or hardware in dangerous applications, then you shall be responsible to take all appropriate fail-safe, backup, redundancy, and other measures to ensure its safe use. Oracle Corporation and its affiliates disclaim any liability for any damages caused by use of this software or hardware in dangerous applications.

Oracle®, Java, MySQL, and NetSuite are registered trademarks of Oracle and/or its affiliates. Other names may be trademarks of their respective owners.

Intel and Intel Inside are trademarks or registered trademarks of Intel Corporation. All SPARC trademarks are used under license and are trademarks or registered trademarks of SPARC International, Inc. AMD, Epyc, and the AMD logo are trademarks or registered trademarks of Advanced Micro Devices. UNIX is a registered trademark of The Open Group.

This software or hardware and documentation may provide access to or information about content, products, and services from third parties. Oracle Corporation and its affiliates are not responsible for and expressly disclaim all warranties of any kind with respect to third-party content, products, and services unless otherwise set forth in an applicable agreement between you and Oracle. Oracle Corporation and its affiliates will not be responsible for any loss, costs, or damages incurred due to your access to or use of third-party content, products, or services, except as set forth in an applicable agreement between you and Oracle.

# Contents

## 1 Creating Property File for Gateway Applications

---

1.1	Create Property Files	1-1
1.1.1	Gateway EJB Application	1-3
1.1.2	Gateway MDB Application	1-11
1.1.3	Gateway HTTP Servlet Application	1-20
1.1.4	Gateway Web Service Application	1-24
1.1.5	REST Services Application	1-35

# Preface

This topic contains the following sub-topics:

- [Purpose](#)
- [Audience](#)
- [Documentation Accessibility](#)
- [Critical Patches](#)
- [Diversity and Inclusion](#)
- [Related Resources](#)
- [Conventions](#)
- [Screenshot Disclaimer](#)
- [Acronyms and Abbreviations](#)

## Purpose

This guide helps the user to create the property file for the gateway components viz. Enterprise Java Bean (EJB), Message Driven Beans (MDB), Web Services and Servlet.

## Audience

This guide is intended for anyone responsible for installing Oracle Banking Application.

## Documentation Accessibility

For information about Oracle's commitment to accessibility, visit the Oracle Accessibility Program website at <http://www.oracle.com/pls/topic/lookup?ctx=acc&id=docacc>.

### **Access to Oracle Support**

Oracle customer access to and use of Oracle support services will be pursuant to the terms and conditions specified in their Oracle order for the applicable services.

## Critical Patches

Oracle advises customers to get all their security vulnerability information from the Oracle Critical Patch Update Advisory, which is available at [Critical Patches, Security Alerts and Bulletins](#). All critical patches should be applied in a timely manner to make sure effective security, as strongly recommended by [Oracle Software Security Assurance](#).

## Diversity and Inclusion

Oracle is fully committed to diversity and inclusion. Oracle respects and values having a diverse workforce that increases thought leadership and innovation. As part of our initiative to build a more inclusive culture that positively impacts our employees, customers, and partners, we are working to remove insensitive terms from our products and documentation. We are also

mindful of the necessity to maintain compatibility with our customers' existing technologies and the need to ensure continuity of service as Oracle's offerings and industry standards evolve. Because of these technical constraints, our effort to remove insensitive terms is ongoing and will take time and external cooperation.

## Related Resources

For more information, see these Oracle Banking Treasury Management resources:

- [Oracle Banking Treasury Management Release Notes](#)
- [Oracle Banking Treasury Management Installer Index](#)
- [Oracle Banking Treasury Management Installer Prerequisite](#)

## Conventions

The following text conventions are used in this document:

Convention	Meaning
<b>boldface</b>	Boldface type indicates graphical user interface elements associated with an action, or terms defined in text or the glossary.
<i>italic</i>	Italic type indicates book titles, emphasis, or placeholder variables for which you supply particular values.
monospace	Monospace type indicates commands within a paragraph, URLs, code in examples, text that appears on the screen, or text that you enter.

## Screenshot Disclaimer

Personal information used in the interface or documents is dummy and does not exist in the real world. It is only for reference purposes.

## Acronyms and Abbreviations

The acronyms and abbreviations are listed in this below table:

**Table Acronyms and Abbreviations**

Abbreviations or Acronyms	Definition
DV	Derivatives
ETD	Exchange Traded Derivatives
FX	Foreign Exchange
FCUBS	Oracle FLEXCUBE Universal Banking
MM	Money Market
OBTR	Oracle Banking Treasury Management
OT	Over the Counter Options
SE	Securities
SR	Securities Repo

# 1

## Creating Property File for Gateway Applications

This chapter explains the steps to create the property file for the gateway components viz. Enterprise Java Bean (EJB), Message Driven Beans (MDB), Web Services and Servlet.

This topic has the following sub-topics:

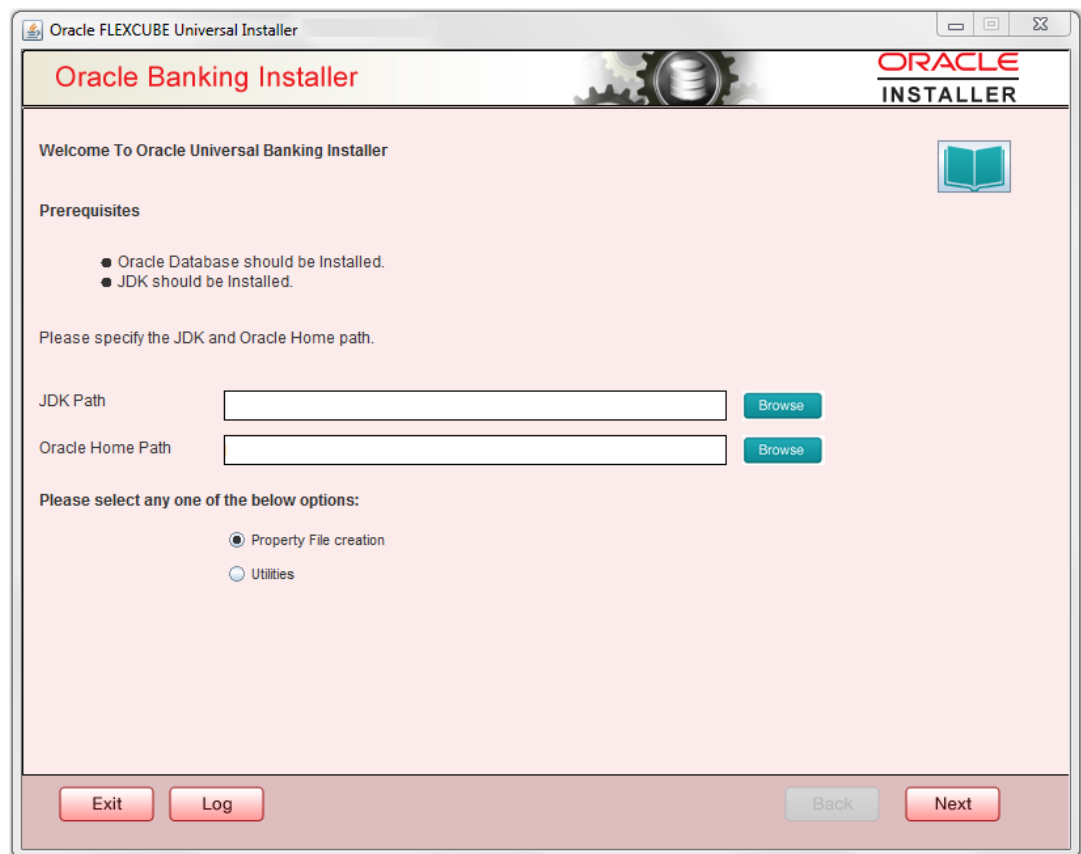
- [Create Property Files](#)

### 1.1 Create Property Files

Follow the steps given below:

1. Start Oracle Banking Trade Finance Solutions Installer - FCUBSInstaller.bat from INSTALLER\SOFT\GUI. Prerequisites screen is displayed.

**Figure 1-1 Oracle Banking Installer- Welcome to Oracle Universal Banking Installer screen**



2. Select component as **Gateway**.

Figure 1-2 Oracle Banking Installer- Select one of the Components screen

Oracle FLEXCUBE Universal Installer 12.5.0.0.0

**Oracle Banking Installer** ORACLE INSTALLER

Select one of the Components

Load Existing Property File

☐ INFRA ☐ Scheduler ☒ Gateway ☐ Switch Interface Installation

Select Oracle Product Processors

☐ Oracle FLEXCUBE Universal Banking

☐ Oracle FLEXCUBE Enterprise Limits and Collateral Management (CO-DEPLOY)

☐ Oracle Banking Payments

☐ Oracle Banking Corporate Lending ☐ Open Development Tool

☒ Oracle Banking Treasury

☐ Oracle Banking Trade Finance

Select Plugins to be Installed

☐ Branch  Load Existing Branch Property File

Host Address   ☐ BPEL ☐ Scheduler

☐ Reports   ☒ OFTW ☐ FGL ☐ SIANET Adapter

☐ DMS   ☐ Insulation ☒ ELCM Adapter required

3. Enter the Required details in the Screen.

Specify the EAR name, valid Application Server Path, Source and EAR destination path and click '**Next**' button.

**Figure 1-3 Oracle Banking Installer- Provide Environment details screen**

Oracle FLEXCUBE Universal Installer 12.5.0.0.0

**Oracle Banking Installer** **ORACLE INSTALLER**

**Provide Environment details.**

EAR Name

File Separator Style

Application Server

☐ OBMA PP Installed

Application Server Path

Source Path

Ear Destination Path

Cookie-Name (JSESSION\_ID)

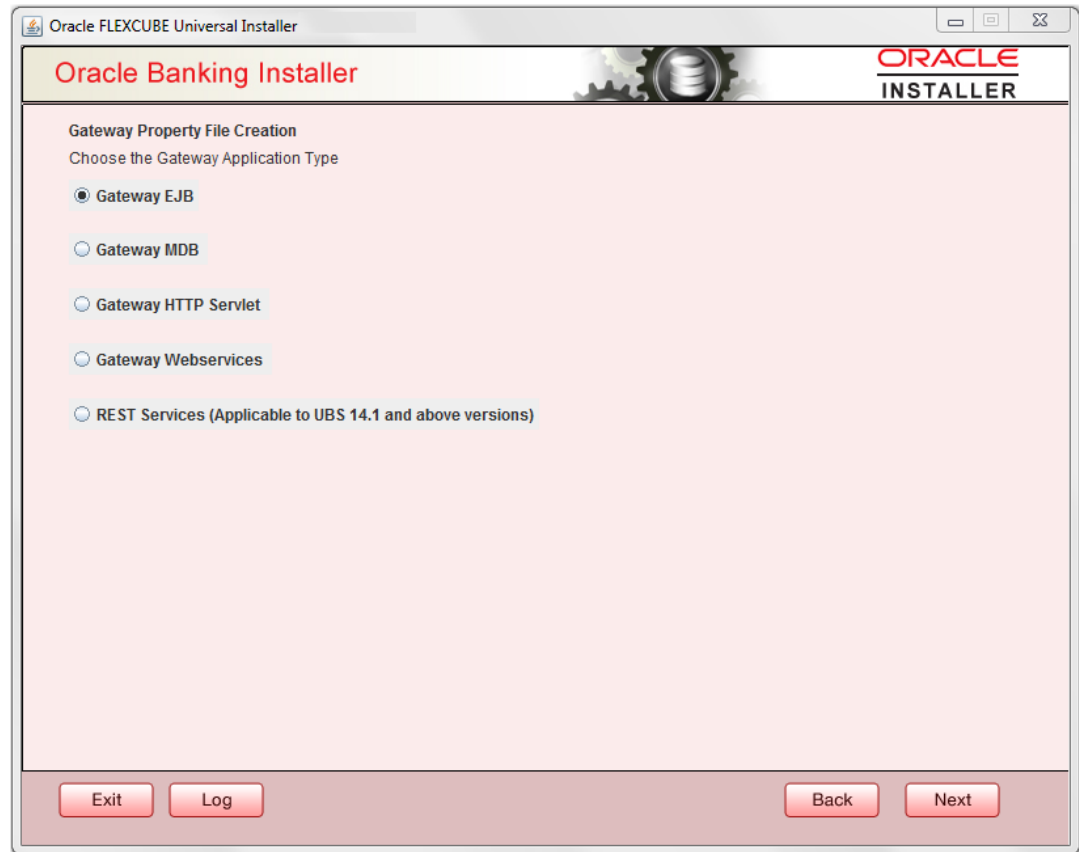
- Gateway EJB Application
- Gateway MDB Application
- Gateway HTTP Servlet Application
- Gateway Web Service Application
- REST Services Application

### 1.1.1 Gateway EJB Application

1. Select '**Gateway EJB**' as the application type as shown in the below Screen.

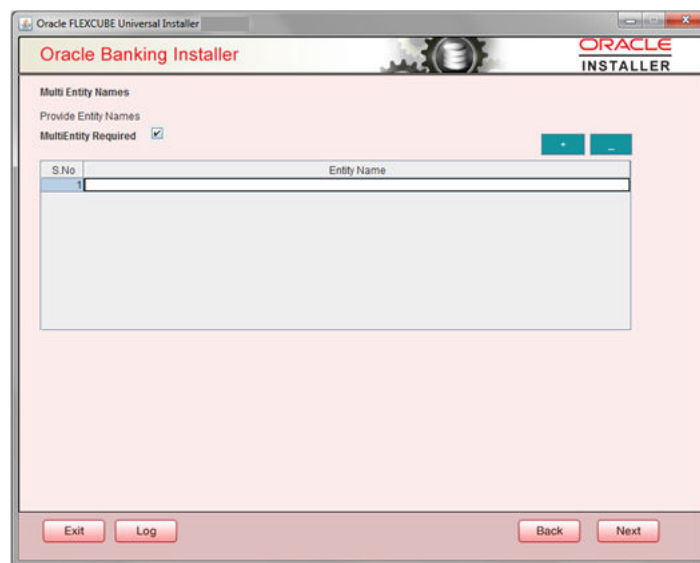


**Figure 1-4 Oracle Banking Installaer- Gateway Property File Creation screen**



2. Click **Next**. The following screen is displayed:  
The installer displays the **Multi Entity** screen.

**Figure 1-5 Oracle Banking Installer- Multi Entity Names**



**Table 1-1 Fields**

Field	Description
<b>MultiEntity Required</b>	Select the multi entity check box for enabling the multi entity deployment. After selecting the multi entity option '+', '-' buttons will be enabled for capturing the entity Name.
<b>+ Button</b>	New row will be added for capturing new entity name.
<b>- Button</b>	Select the entity name and click – button, deletion of existing entity name will be done.
<b>Entity Name</b>	Enter the entity name as single word. For example: ENTITY1

- Click 'Next'. The following screen is displayed:

**Figure 1-6 Oracle Banking Installer- Property File Creation**

**Oracle FLEXCUBE Universal Installer**

**Oracle Banking Installer** **ORACLE INSTALLER**

**Property File Creation**  
Current screen provides an option for Enabling Single Sign on

SSO Required ☒  
SSO KEY

Authentication details maintained external to FLEXCUBE  
 External Password Required ☐ Authentication Type   
 External User Login Required ☐

With this property a user logs in once and gains access to all systems without being prompted to log in again at each of them. Conversely, Single sign-off is the property whereby a single action of signing out terminates access to multiple software systems. This screen provides an option for External Authentication. If External Authentication is not required, keep the all options unchecked and Click on Next.

MSAD/LDAP User Login Required: User can login with MSAD/LDAP user ID as well as FCUBS user ID.

External Password Required: The user can login with MSAD/LDAP server password only. The user ID can be either the MSAD/LDAP user ID or FCUBS user ID.

Authentication Type: LDAP/MSAD is the type of external server used for authentication.

Exit Log Back Next

- Specify the following details, refer the table below:

**Table 1-2 Fields**

Field	Description
<b>SSO Required</b>	Check this box to enable single sign-on (SSO). If you check this box, you need to specify the SSO Key.

**Table 1-2 (Cont.) Fields**

Field	Description
<b>SSO Key</b>	Specify the SSO key. If you have checked the box ' <b>SSO Required</b> ', it is mandatory to specify the SSO key.  If you have checked the box ' <b>SSO Required</b> ', then the Installer will skip the following two screens and will directly navigate to the SSL screen shown below in this manual.  If you have not checked the box ' <b>SSO Required</b> ', then click ' <b>Next</b> '. The following screen is displayed.

### External User Login Required

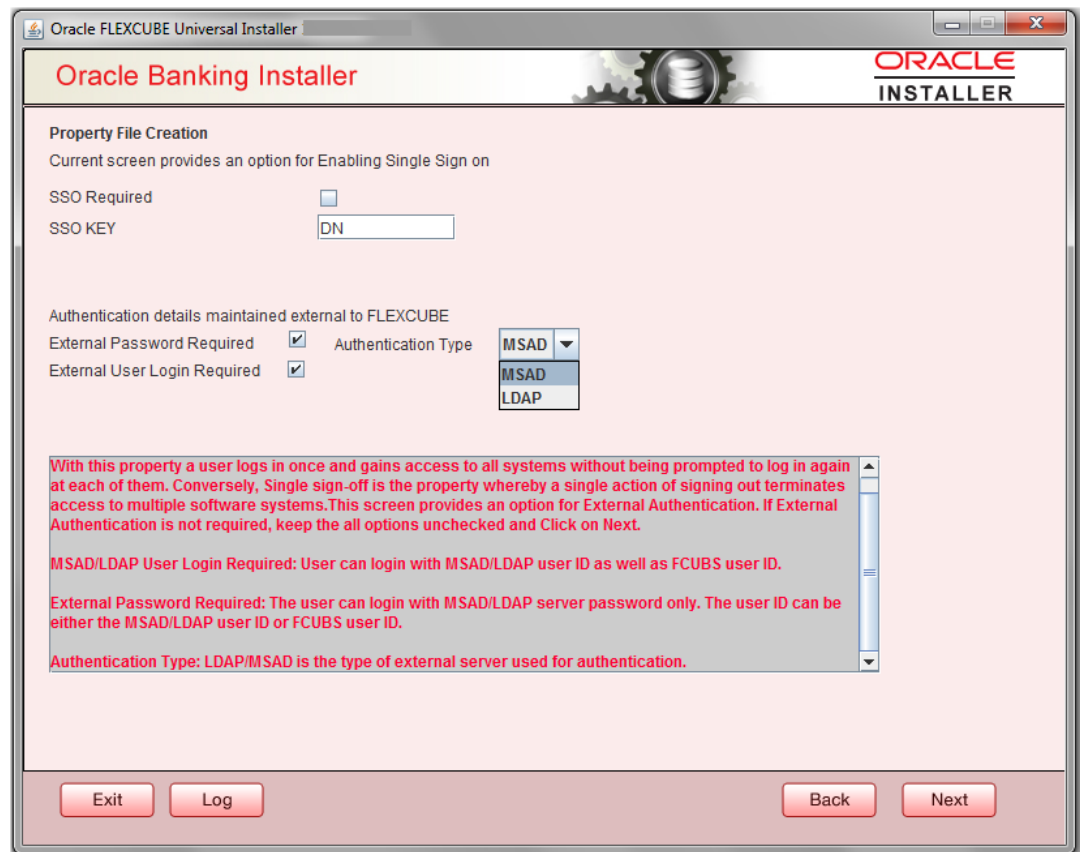
Check this box to enable user login using MSAD/LDAP user Id.

If you check this box, the user can login with MSAD/LDAP server user Id as well as FCUBS user Id. If you do not check this box, the user can login using FCUBS user Id only.

#### **Note:**

(MSAD: Microsoft Active Directory, LDAP: Lightweight Directory Access Protocol.)

**Figure 1-7 Oracle Banking Installer- Property File Creation**



**Oracle FLEXCUBE Universal Installer**

**Oracle Banking Installer**

**Property File Creation**  
Current screen provides an option for Enabling Single Sign on

SSO Required ☐

SSO KEY

Authentication details maintained external to FLEXCUBE

External Password Required ☒ Authentication Type **MSAD**

External User Login Required ☒ **MSAD**  
**LDAP**

With this property a user logs in once and gains access to all systems without being prompted to log in again at each of them. Conversely, Single sign-off is the property whereby a single action of signing out terminates access to multiple software systems. This screen provides an option for External Authentication. If External Authentication is not required, keep the all options unchecked and Click on Next.

MSAD/LDAP User Login Required: User can login with MSAD/LDAP user ID as well as FCUBS user ID.

External Password Required: The user can login with MSAD/LDAP server password only. The user ID can be either the MSAD/LDAP user ID or FCUBS user ID.

Authentication Type: LDAP/MSAD is the type of external server used for authentication.

**Exit Log Back Next**

**External Password Required**

Check this box to allow user login using MSAD/LDAP password irrespective of the user Id.

If you check this box, the user can login using MSAD/LDAP server password only. The user Id can be one of the following:

- MSAD/LDAP user Id
- OBTFM user Id

If you do not check this box, then the installer skips the following screen and directly navigates to the Modifying Gateway Properties screen.

**Authentication Type**

Select the authentication type. This is the type of external server that is used. You can select one of the following options:

- MSAD (Microsoft Active Directory)
- LDAP (Lightweight Directory Access Protocol)

The default option is MSAD; however, you can change it


5. If you check the box, then the installer navigates to the following screen on clicking 'Next' button.

**Figure 1-8 Oracle Banking Installer- Property File Creation**

No.	Name	Value
1	LDAP SERVER URL	LDAP://10.10.10.10:111
2	LDAP SSL ENABLED	<input type="checkbox"/>
3	SECURITY AUTHENTICATIO...	Simple
4	DOMAIN NAME	I-FLEX.COM
5	LDAP SERVER TIMEOUT	0

6. Specify the following LDAP server details., refer the table below:

Table 1-3 Fields

Field	Description
<b>LDAP Server URL</b>	Specify the URL to access the LDAP server where the external user ID and password are maintained.
<b>LDAP SSL Enabled</b>	Check this box if the LDAP server is SSL enabled. If you check this box, then you need to specify the SSL port also in the field <b>LDAP SERVER URL</b> .
<b>Security Authentication Type</b>	<p>Depending on the authentication mechanism supported by the LDAP server, select one of the following:</p> <ul style="list-style-type: none"><li>• <b>simple</b></li><li>• <b>strong</b></li></ul> <div> <b>Note:</b><ul style="list-style-type: none"><li>• Different servers support different authentication mechanisms.</li><li>• By default, the security authentication type is '<b>Simple</b>'; however, you can change this.</li></ul></div>
<b>Domain Name</b>	Specify the domain name.
<b>LDAP Server Timeout</b>	<p>Specify the LDAP server timeout in milliseconds. This must be a positive integer value. For example you can specify 1000, 10000 or 5000. If it is zero or less, it indicates that no read timeout is specified. Then the wait for the response infinite until it is received.</p> <p>By default, the LDAP server timeout is zero; however, you can change this.</p>

7. Click '**Next**'. The following screen is displayed:

**Figure 1-9 Oracle Banking Installer- Property File Creation**

8. Specify the following details, refer the table below:

**Table 1-4 Fields**

Field	Description
<b>XSD Path</b>	Specify the path to the XSD file. File name is not required. File separator must be '/'. There must be a '/' at the end. All the relevant XSD files must be manually copied to this location. Example: For Windows: D:\Kernel11.1\GW_EJB\XSD\ For Linux: /Kernel11.1/GW_EJB/XSD/
<b>Logger File</b>	Specify the path to the 'gw_ejb_logger.properties' file with the file name. The file must be manually copied to the specified location. Example: For windows: D:\Kernel11.1\GW_EJB\config\gw_ejb_logger.properties For Linux: /Kernel11.1/GW_EJB/config/gw_ejb_logger.properties
<b>Debug Path</b>	Specify the path to the folder where the application creates the logs. There must be a '/' at the end. You need to manually create the specified folder structure. Example: For windows: D:\Kernel11.1\GW_EJB\log\ For Linux: /Kernel11.1/GW_EJB/log/

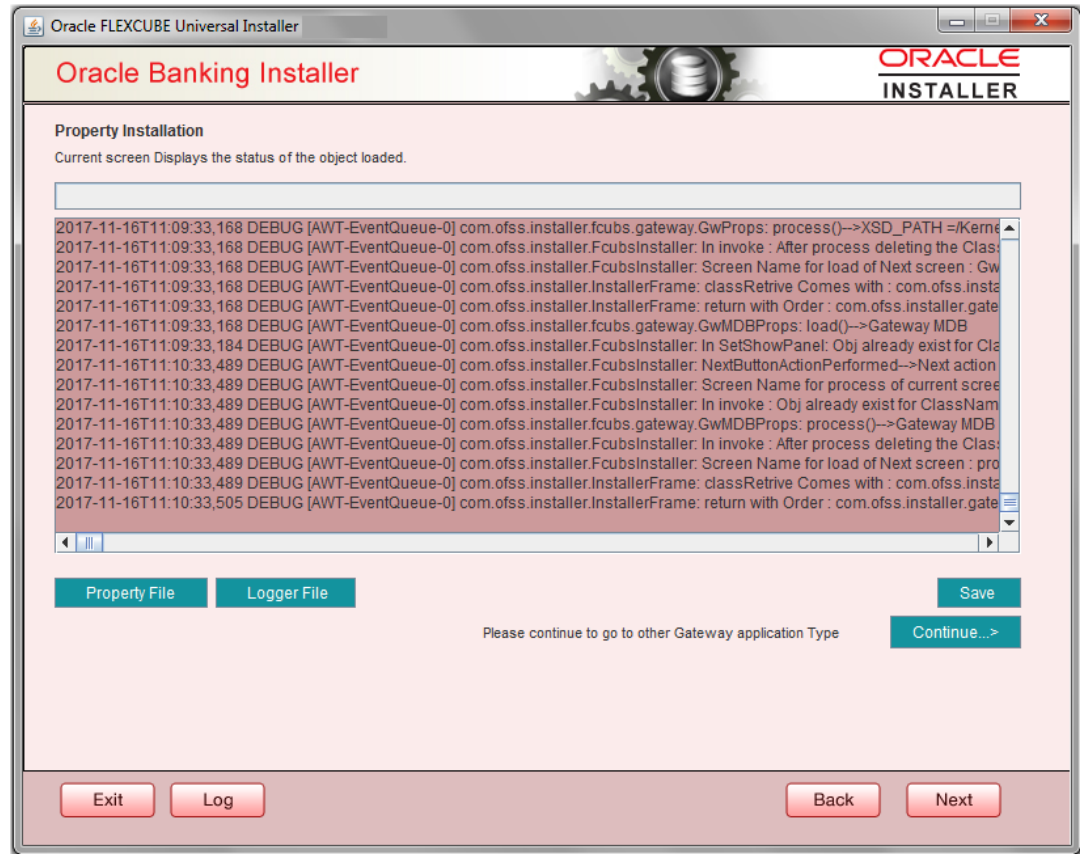
Table 1-4 (Cont.) Fields

Field	Description
<b>Security Key for Encryption</b>	Specify the security key for the Encryption, here in this case it is ' <b>Oraclefinancialsolutions</b> '.
<b>SMS Pool Name</b>	Specify SMS Pool Name, here in this case it is ' <b>jdbc/fcjddevDSSMS</b> '.
<b>DataSource</b>	The JDBC data source is an object bound to JNDI tree and provides database connectivity through a pool of JDBC connections.
<b>POSS Datasource</b>	Check this box if POSS is required. If you check this box, you need to specify the POSS Datasource Name in the field below this.
<b>OPSS CSF Available</b>	Indicate whether OPSS-CSF is installed or not. Please choose this only if Oracle Platform Security Services - Credential Store Framework (CSF) is installed as per the guidelines in the pre-requisite document. It is recommended that you install CSF for safeguarding application specific security credentials.
<b>Distributed Schema</b>	If the schema is distributed, select ' <b>Yes</b> '. If the schema is not distributed, select ' <b>No</b> '.
<b>MSG IN LOG Required</b>	Choose Yes/No from drop down box.
<b>MSG OUT LOG Required</b>	Choose Yes/No from drop down box. The Installer creates two files viz. ' <b>gw_ejb_logger.properties</b> ' and ' <b>GW_EJB_Prop.propeties</b> ' in the path provided to save the files.
<b>Integration with CN Logger</b>	Choose this check box if integration with CN logger is required.

9. Click '**Next**'. The following screen is displayed.

The property file will be created in a temporary folder.

**Figure 1-10 Property Installation**



10. Click **Property File** to view the created property file.
11. Click **Save** to save the created property file in the desired location.
12. Click **Next** to navigate to the installer home screen.

For Gateway EJB EAR Building refer 'OBTR\_EAR\_Building document'

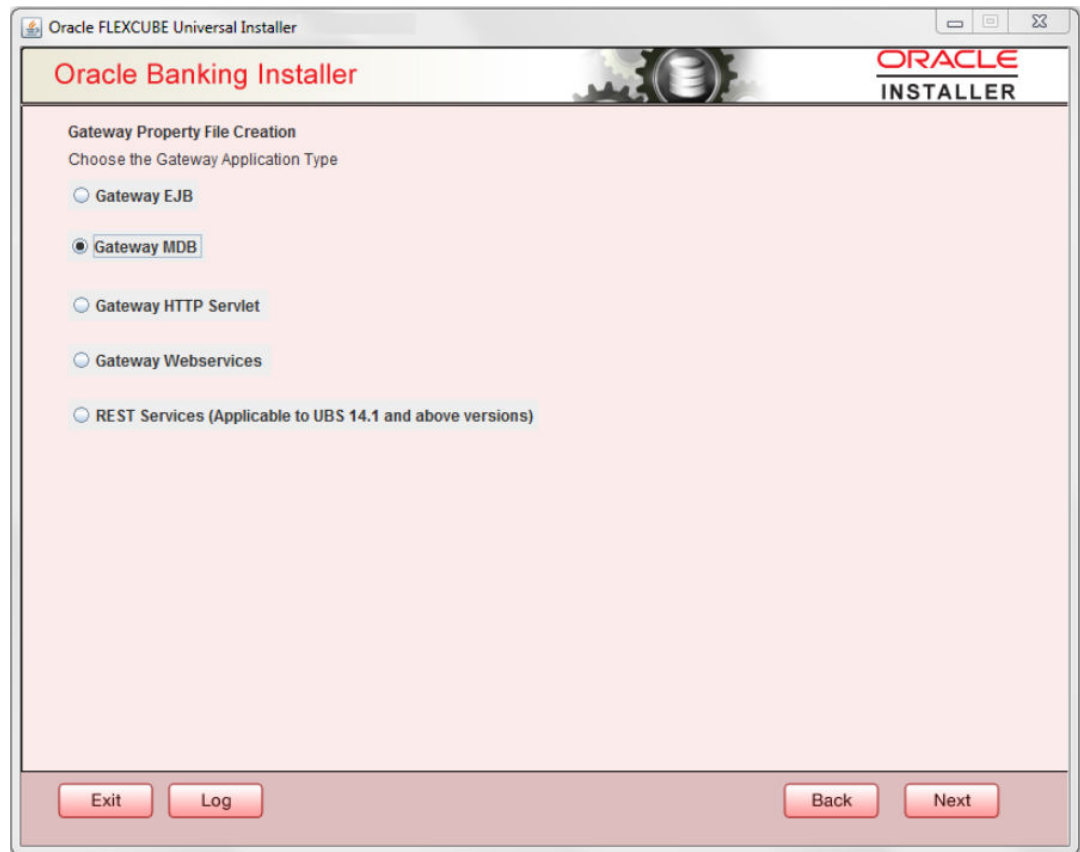
## 1.1.2 Gateway MDB Application

Follow the steps given below:

1. Select **Gateway MDB** as the application type as shown in the below Screen.

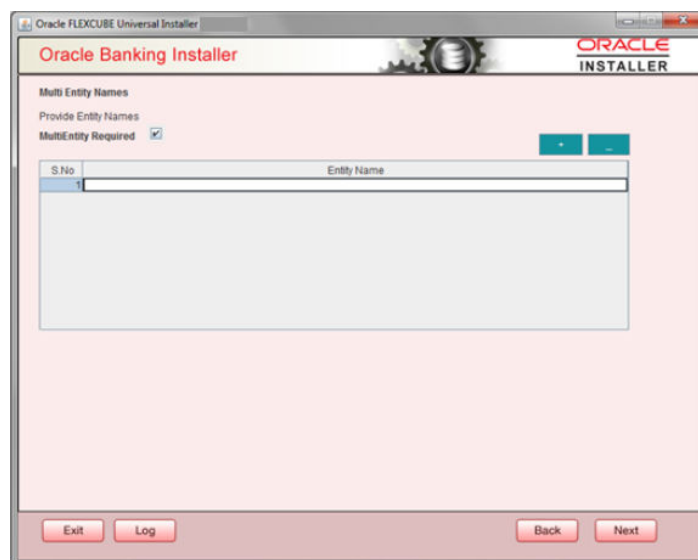


**Figure 1-11 Oracle Banking Installer- Gateway MDB**



2. Click **Next**. The following screen is displayed:  
The installer displays the **Multi Entity** screen.

**Figure 1-12 Oracle Banking Installer- Multi Entity**



**Table 1-5 Fields**

Field	Description
<b>MultiEntity Required</b>	Select the multi entity check box for enabling the multi entity deployment. After selecting the multi entity option '+', '-' buttons will be enabled for capturing the entity Name.
<b>+ Button</b>	New row will be added for capturing new entity name.
<b>- Button</b>	Select the entity name and click – button, deletion of existing entity name will be done.
<b>Entity Name</b>	Enter the entity name as single word. For example: ENTITY1

- Click **Next**. The following screen is displayed:

**Figure 1-13 Oracle Banking Installer- Property File Creation**

Oracle FLEXCUBE Universal Installer

**Oracle Banking Installer** ORACLE INSTALLER

**Property File Creation**  
Current screen provides an option for Enabling Single Sign on

SSO Required ☒  
SSO KEY

Authentication details maintained external to FLEXCUBE  
External Password Required ☐ Authentication Type   
External User Login Required ☐

With this property a user logs in once and gains access to all systems without being prompted to log in again at each of them. Conversely, Single sign-off is the property whereby a single action of signing out terminates access to multiple software systems. This screen provides an option for External Authentication. If External Authentication is not required, keep all options unchecked and Click on Next.

MSAD/LDAP User Login Required: User can login with MSAD/LDAP user ID as well as FCUBS user ID.

External Password Required: The user can login with MSAD/LDAP server password only. The user ID can be either the MSAD/LDAP user ID or FCUBS user ID.

Authentication Type: LDAP/MSAD is the type of external server used for authentication.

Exit Log Back Next

- Specify the following details, refer the table below:

**Table 1-6 Fields**

Field	Description
<b>SSO Required</b>	Check this box to enable single sign-on (SSO). If you check this box, you need to specify the SSO Key.

Table 1-6 (Cont.) Fields

Field	Description
<b>SSO Key</b>	Specify the SSO key. If you have checked the box ' <b>SSO Required</b> ', it is mandatory to specify the SSO key.  If you have checked the box ' <b>SSO Required</b> ', then the Installer will skip the following two screens and will directly navigate to the Modifying the Gateway properties Screen.

**External Password Required**

Check this box to allow the user-login using MSAD/LDAP password irrespective of the user ID. If you check this box, the user ID can be either the MSAD/LDAP user ID or the FCUBS user ID. And the password can be MSAD/LDAP server password only.

By default, this check box is unchecked. However, you can change this.

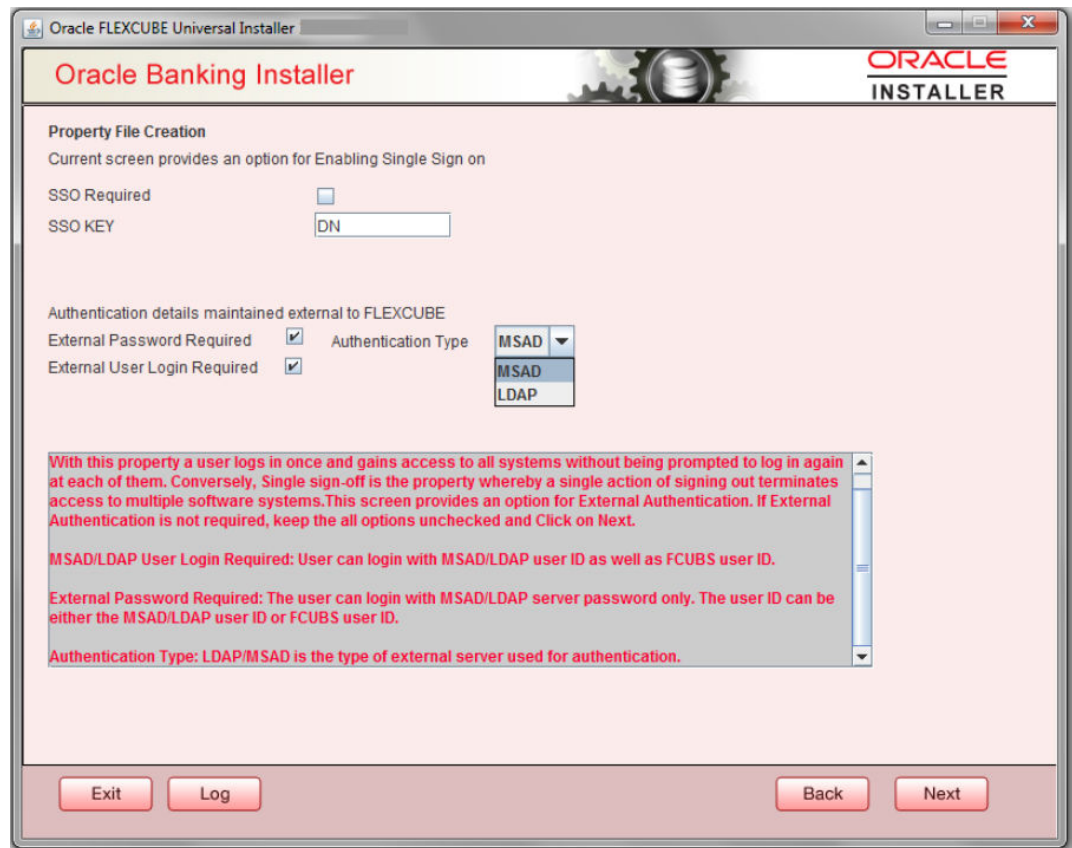
If you do not check this box, the installer skips the following screen and directly navigates you to the Modifying the Gateway Properties Screen.

**External User Login Required**

Check this box to enable user login using MSAD/LDAP user ID. If you check this box, the user can login using MSAD/LDAP server user ID as well as using FCUBS user ID. If you do not check this, the user can login using FCUBS user ID only.

By default, this check box is unchecked. However, you can change this.

**Figure 1-14 Oracle Banking Installer- Property file Creation- External Password Required**



The field '**Authentication Type**' is enabled if one of the above check boxes is checked:

#### Authentication Type

Select the authentication type from the adjoining drop-down list. This is the type of external server that is used. You can select one of the following options:

- MSAD (Microsoft Active Directory)
- LDAP (Lightweight Directory Access Protocol)

By default, 'MSAD' is selected; however, you can change it.

5. Click '**Next**'. The following screen is displayed.

Figure 1-15 Oracle Banking Installer- LDAP Server Details for Gateway

No.	Name	Value
1	LDAP SERVER URL	LDAP://10.10.10.10:111
2	LDAP SSL ENABLED	<input type="checkbox"/>
3	SECURITY AUTHENTICATIO...	Simple
4	DOMAIN NAME	I-FLEX.COM
5	LDAP SERVER TIMEOUT	0

6. Specify the following LDAP server details and refer the table below:

Table 1-7 Fields

Field	Description
LDAP Server URL	Specify the URL to access the LDAP server where the external user ID and password are maintained.
LDAP SSL Enabled	<p>Check this box if the LDAP server is SSL enabled. If you check this box, then you need to specify the SSL port also in the field <b>LDAP SERVER URL</b>.</p> <p>By default, this check box is unchecked. However, you can change this.</p>
Security Authentication Type	<p>Depending on the authentication mechanism supported by the LDAP server, select one of the following:</p> <ul style="list-style-type: none"><li>• <b>Simple</b></li><li>• <b>Strong</b></li></ul> <p>Note the following:</p> <ul style="list-style-type: none"><li>• Different servers support different authentication mechanisms.</li><li>• By default, the security authentication type is '<b>Simple</b>'; however, you can change this.</li></ul>
Domain Name	Specify the domain name.

**Table 1-7 (Cont.) Fields**

Field	Description
<b>LDAP Server Timeout</b>	Specify the LDAP server timeout in milliseconds. This must be a positive integer value. For example you can specify 1000, 10000 or 5000. If it is zero or less, it indicates that no read timeout is specified. Then the wait for the response infinite until it is received.  By default, the LDAP server timeout is zero; however, you can change this.

Click **'Next'**. The following screen is displayed:

**Figure 1-16 Oracle Banking Installer- Gateway Properties**

Oracle FLEXCUBE Universal Installer 12.5.0.0.0

**Oracle Banking Installer**

**Property File Creation**  
Current screen provides an option for modifying the Gateway Properties

XSD Path: /Kernel11.1/GW\_MDB/XSD/

Logger File: /Kernel11.1/GW\_MDB/config/gw\_mdb\_logger.properties

Debug Path: /Kernel11.1/GW\_MDB/log/

Security Key for Encryption: oraclefinancials

SMS Pool Name: jdbc/fcjddevDSSMS

DataSource: FLEXTTEST.WORLD

☐ POSS DataSource ☒ OPSS CSF Available

POSS DataSource: POSSTEST.WORLD

Distributed Schema: No

MSG IN log Required: No

MSG OUT log Required: No

☐ Integration with CN Logger

Exit Log Back Next

- Specify the following details, refer the table below:

**Table 1-8 Fields**

Field	Description
<b>XSD Path</b>	Specify the path to the XSD file. File name is not required. File separator must be '/'. There must be a '/' at the end. All the relevant XSD files must be manually copied to this location. Example: For Windows: D:\Kernel11.1\GW_MDB\XSD\ For Linux: /Kernel11.1/GW_MDB/XSD/

Table 1-8 (Cont.) Fields

Field	Description
<b>Logger File</b>	Specify the path to the ' <b>gw_mdb_logger.properties</b> ' file with the file name. The file must be manually copied to the specified location. Example: For windows: D:\Kernel11.1\GW_MDB\config\gw_mdb_logger.properties For Linux: /Kernel11.1/GW_MDB/config/gw_mdb_logger.properties
<b>Debug Path</b>	Specify the path to the folder where the application creates the logs. There must be a '/' at the end. You need to manually create the specified folder structure. Example: For windows: D:\Kernel11.1\GW_MDB\log\ For Linux: /Kernel11.1/GW_MDB/log/
<b>Security Key for Encryption</b>	Specify the security key for the Encryption, here in this case it is ' <b>Oraclefinancialsolutions</b> '.
<b>SMS Pool Name</b>	Specify SMS Pool Name, here in this case it is ' <b>jdbc/fcjdevDSSMS</b> '.
<b>DataSource</b>	The JDBC data source is an object bound to JNDI tree and provides database connectivity through a pool of JDBC connections.
<b>POSS Datasource</b>	Check this box if POSS is required. If you check this box, you need to specify the POSS Datasource Name in the field below this.
<b>OPSS CSF Available</b>	Indicate whether OPSS-CSF is installed or not. Choose this only if Oracle Platform Security Services - Credential Store Framework (CSF) is installed as per the guidelines in the pre-requisite document. It is recommended that you install CSF for safeguarding application specific security credentials.
<b>Distributed Schema</b>	If the schema is distributed, select ' <b>Yes</b> '. If the schema is not distributed, select ' <b>No</b> '.
<b>MSG IN LOG Required</b>	Choose Yes/No from drop down box.
<b>MSG OUT LOG Required</b>	Choose Yes/No from drop down box.
<b>Integration with CN Logger</b>	Choose this check box if integration with CN logger is required.

Click '**Next**'. The following screen is displayed.

**Figure 1-17 Oracle Banking Installer0 Gateway Property File Creation**

No.	Name	Value
1	Request Queue	MDB_QUEUE
2	Response queue	MDB_QUEUE_RESPONSE
3	DL Queue	MDB_QUEUE_DLQ
4	Connection Factory	MDBQCF
5	Secure Queue	<input type="checkbox"/>
6	Caller ID	
7	Caller Password	

8. Specify the following details, refer the table below:

**Table 1-9 Fields**

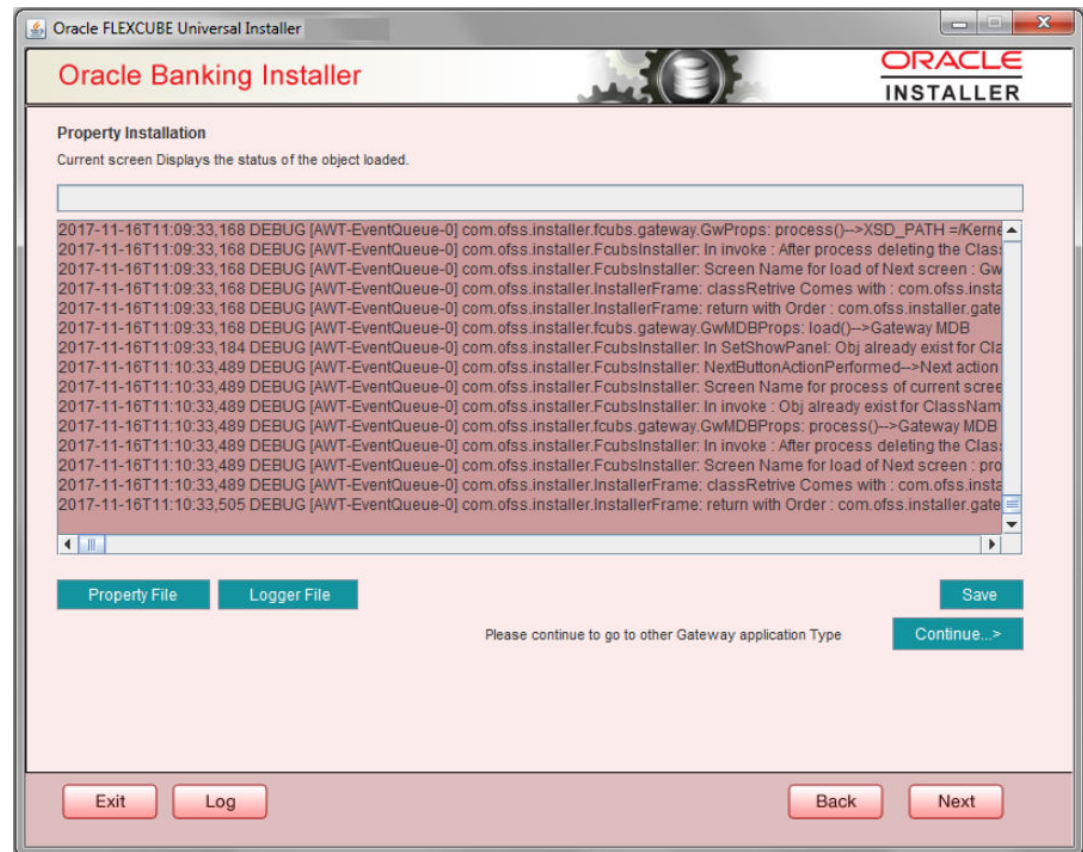
Field	Description
<b>Request Queue</b>	Specify the request queue. This is the point-to-point destination type used for asynchronous peer communication. Example: MDB_QUEUE
<b>Response Queue</b>	Specify the response queue name. Example: MDB_QUEUE_RESPONSE
<b>DL Queue</b>	Specify the dead letter queue name. Example: MDB_QUEUE_DLQ  <div> <b>Note:</b> Refer Resources_To_ Be_Created.docx for creation of Queues </div>
<b>Connection Factory</b>	Specify the connection configuration parameters to create connections for JMS clients. Example: MDBQCF



**Table 1-9 (Cont.) Fields**

Field	Description
<b>Secure Queue</b>	Check this box if the Caller ID and Caller Password values have to be entered.  The Installer creates two files viz. 'gw_mdb_logger.properties' and 'GW_MDB_Prop.properties' in the path provided to save the files.

Click **'Next'**. The following screen is displayed and the property file will be created in a temporary folder.

**Figure 1-18 Oracle Banking Installer- Property Installation**

9. Click **Property File** to view the created property file.
10. Click **Save** to save the created property file in desired location.
11. Click **Continue** to continue the installation process with gateway application type.
12. Click **Next** to navigate to the installer home screen.

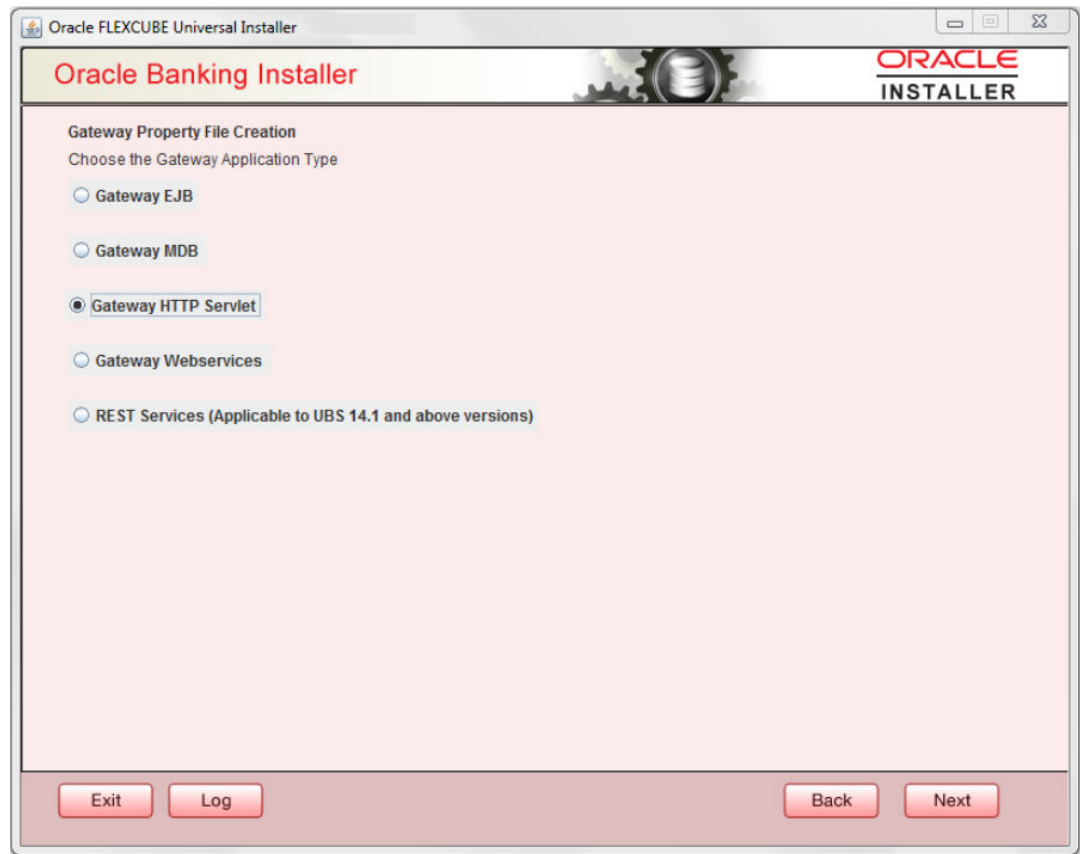
For Gateway MDB EAR Building refer 'OBTR\_EAR\_Building document'.

### 1.1.3 Gateway HTTP Servlet Application

Follow the steps given below:

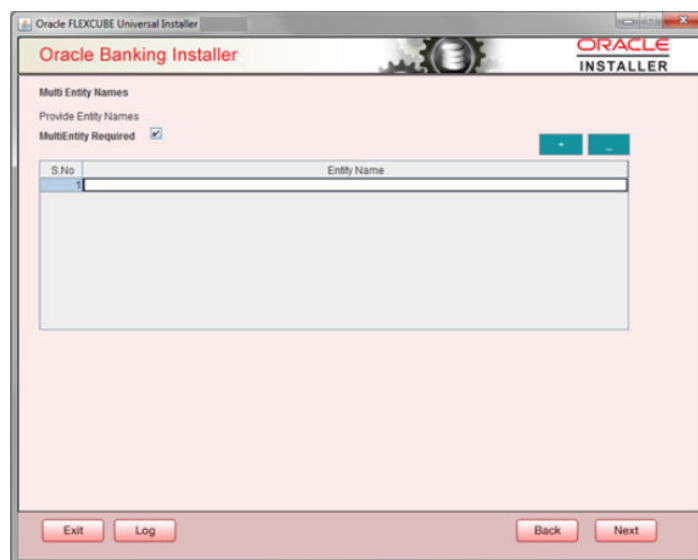
1. Select **Gateway HTTP Servlet** as the application type as shown in the below Screen.

**Figure 1-19 Gateway Property File Creation**



2. Click **Next**. The following screen is displayed:  
The installer displays the **Multi Entity** screen.

**Figure 1-20 Mutli Entity Required**



**Table 1-10 Fields**

Field	Description
<b>MultiEntity Required</b>	Select the multi entity check box for enabling the multi entity deployment. After selecting the multi entity option '+', '-' buttons will be enabled for capturing the entity Name.
<b>+ Button:</b>	New row will be added for capturing new entity name.
<b>- Button</b>	Select the entity name and click – button, deletion of existing entity name will be done.
<b>Entity Name</b>	Enter the entity name as single word. For example: ENTITY1

Click 'Next'. The following screen is displayed:

**Figure 1-21 Property File Creation to modify gateway properties**

Oracle FLEXCUBE Universal Installer 12.5.0.0.0

**Oracle Banking Installer** **ORACLE INSTALLER**

**Property File Creation**  
Current screen provides an option for modifying the Gateway Properties

XSD Path: /Kernel11.1/GW\_EJB/XSD/

Logger File: /Kernel11.1/GW\_EJB/config/gw\_ejb\_logger.properties

Debug Path: /Kernel11.1/GW\_EJB/log/

Security Key for Encryption: oraclefinancials

SMS Pool Name: jdbc/fc/devDSSMS

DataSource: FLEXTEST.WORLD

☐ POSS DataSource ☒ OPSS CSF Available

POSS DataSource: POSSTEST.WORLD

Distributed Schema: No

MSG IN log Required: No MSG OUT log Required: No

☐ Integration with CN Logger

Exit Log Back Next

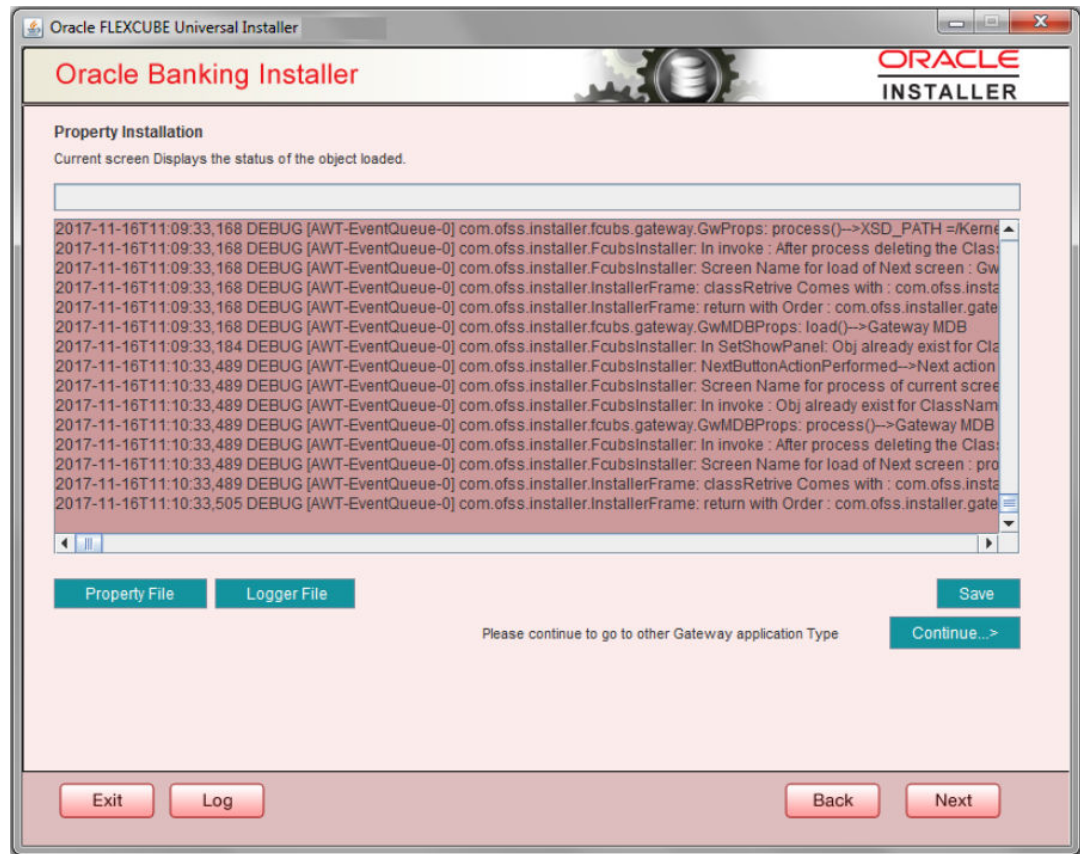
- Specify the following details, refer the table below:

Table 1-11 Fields

Field	Description
<b>XSD Path</b>	Specify the path to the XSD file. File name is not required. File separator must be ' <i>/</i> '. There must be a ' <i>/</i> ' at the end. All the relevant XSD files must be manually copied to this location. Example: For Windows: D:\Kernel11.1\GW_HTTP\XSD\ For Linux: /Kernel11.1/GW_HTTP/XSD/
<b>Logger File</b>	Specify the path to the ' <b>gw_http_logger.properties</b> ' file with the file name. The file must be manually copied to the specified location. Example: For windows: D:\Kernel11.1\GW_HTTP\config\gw_http_logger.properties For Linux: /Kernel11.1/GW_HTTP/config/gw_http_logger.properties
<b>Debug Path</b>	Specify the path to the folder where the application creates the logs. There must be a ' <i>/</i> ' at the end. You need to manually create the specified folder structure. Example: For windows: D:\Kernel11.1\GW_HTTP\log\ For Linux: /Kernel11.1/GW_HTTP/log/
<b>Security Key for Encryption</b>	Specify the security key for the Encryption, here in this case it is ' <b>Oraclefinancialsolutions</b> '.
<b>SMS Pool Name</b>	Specify SMS Pool Name, here in this case it is ' <b>jdbc/fcjdevDSSMS</b> '.
<b>DataSource</b>	The JDBC data source is an object bound to JNDI tree and provides database connectivity through a pool of JDBC connections.
<b>POSS Datasource</b>	Check this box if POSS is required. If you check this box, you need to specify the POSS Datasource Name in the field below this.
<b>OPSS CSF Available</b>	Indicate whether OPSS-CSF is installed or not. Please choose this only if Oracle Platform Security Services - Credential Store Framework (CSF) is installed as per the guidelines in the pre-requisite document. It is recommended that you install CSF for safeguarding application specific security credentials.
<b>Distributed Schema</b>	If the schema is distributed, select ' <b>Yes</b> '. If the schema is not distributed, select ' <b>No</b> '. The Installer creates two files viz. 'gw_http_logger.properties' and 'GW_HTTP_Prop.properties' in the path provided to save the files
<b>MSG OUT LOG Required</b>	Choose Yes/No from drop down box.
<b>MSG IN LOG Required</b>	Choose Yes/No from drop down box.
<b>Integration with CN Logger</b>	Choose this check box if integration with CN logger is required.

Click **Next**. The following screen is displayed. The property file will be created in a temporary folder.

**Figure 1-22 Property Installation**



4. Click **Property File** to view the created property file.
5. Click **Save** to save the created property file in the desired location.
6. Click **Continue** to continue the installation process with gateway application type.
7. Click **Next** to navigate to the installer home screen.

The property file will be created in the specified folder.

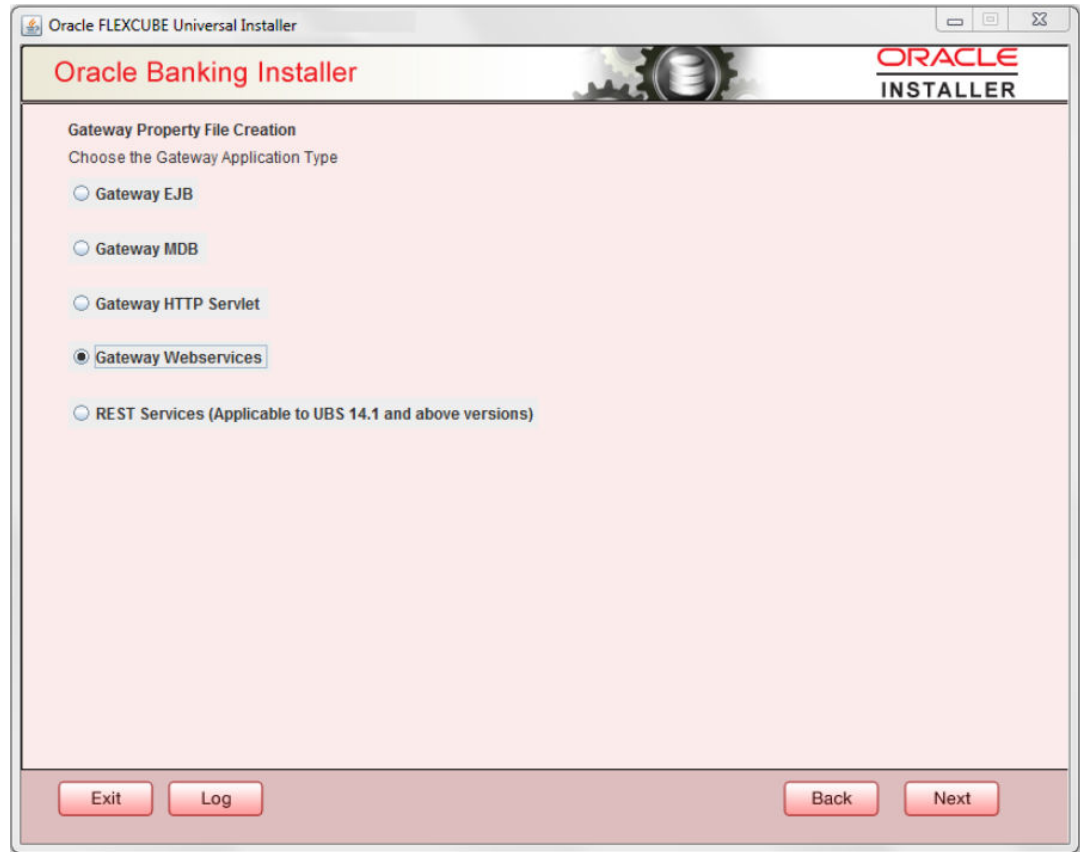
For Gateway HTTP EAR Building refer *Treasury Management EAR Building document*.

## 1.1.4 Gateway Web Service Application

Follow the steps given below:

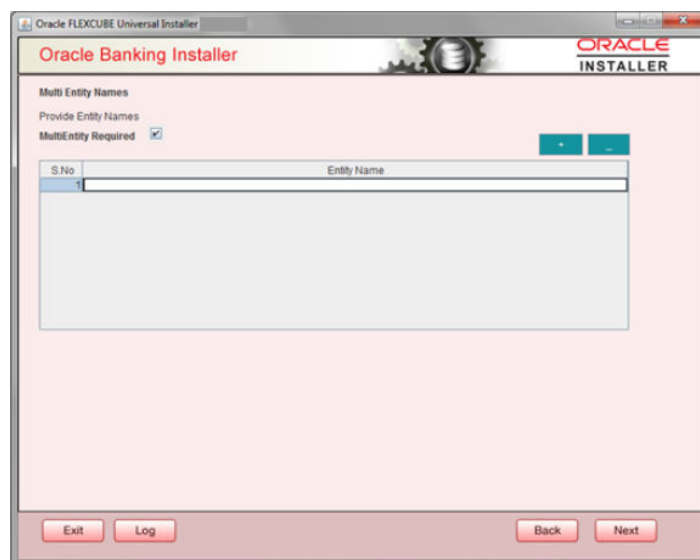
1. Select **Gateway Web Service** as the application type as shown in the below Screen.

**Figure 1-23 Oracle Banking Installer- Gateway Property File Creation**



2. Click **Next**. The following screen is displayed.  
The installer displays the **Multi Entity** screen.

**Figure 1-24 Oracle Banking Installer- Multi Entity**



**Table 1-12 Fields**

Field	Description
<b>MultiEntity Required</b>	Select the multi entity check box for enabling the multi entity deployment. After selecting the multi entity option '+', '-' buttons will be enabled for capturing the entity Name.
<b>+ Button:</b>	New row will be added for capturing new entity name.
<b>- Button</b>	Select the entity name and click – button, deletion of existing entity name will be done.
<b>Entity Name</b>	Enter the entity name as single word. For example: ENTITY1

3. Click **Next**. The following screen is displayed:

**Figure 1-25 Oracle Banking Installer- Property File Creation**

Oracle FLEXCUBE Universal Installer

**Oracle Banking Installer** ORACLE INSTALLER

**Property File Creation**  
Current screen provides an option for Enabling Single Sign on

SSO Required ☒  
SSO KEY

Authentication details maintained external to FLEXCUBE  
External Password Required ☐ Authentication Type   
External User Login Required ☐

With this property a user logs in once and gains access to all systems without being prompted to log in again at each of them. Conversely, Single sign-off is the property whereby a single action of signing out terminates access to multiple software systems. This screen provides an option for External Authentication. If External Authentication is not required, keep the all options unchecked and Click on Next.

MSAD/LDAP User Login Required: User can login with MSAD/LDAP user ID as well as FCUBS user ID.

External Password Required: The user can login with MSAD/LDAP server password only. The user ID can be either the MSAD/LDAP user ID or FCUBS user ID.

Authentication Type: LDAP/MSAD is the type of external server used for authentication.

Exit Log Back Next

4. Specify the following details, refer the table below:

**Table 1-13 Fields**

Field	Description
<b>SSO Required</b>	Check this box to enable single sign-on (SSO). If you check this box, you need to specify the SSO Key.



Table 1-13 (Cont.) Fields

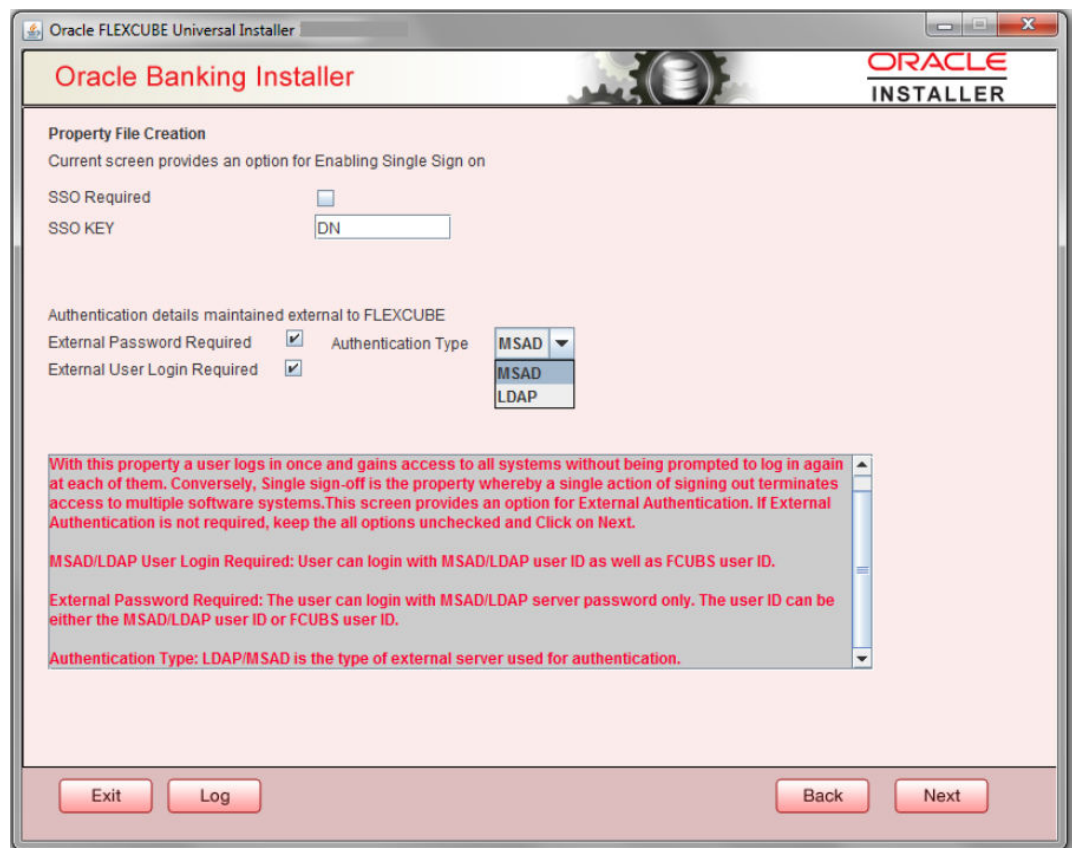
Field	Description
<b>SSO Key</b>	<p>Specify the SSO key. If you have checked the box '<b>SSO Required</b>', it is mandatory to specify the SSO key.</p> <p>If you have checked the box '<b>SSO Required</b>', then the Installer will skip the following two screens and will directly navigate to the Modifying the Gateway properties Screen.</p> <p>If you have not checked the box '<b>SSO Required</b>', then click '<b>Next</b>'. The following screen is displayed.</p>

**External User Login Required**

Check this box to enable user login using MSAD/LDAP user Id.

If you check this box, the user can login with MSAD/LDAP server user Id as well as FCUBS user Id. If you do not check this box, the user can login using FCUBS user Id only.

Figure 1-26 Oracle Banking Intaller- Property File Creation

**External Password Required**

Check this box to allow user login using MSAD/LDAP password irrespective of the user Id.

If you check this box, the user can login using MSAD/LDAP server password only. The user Id can be one of the following:



- MSAD/LDAP user Id
- User Id

If you do not check this box, then the installer skips the following screen and directly navigates to the Modifying Gateway Properties screen.

The field **Authentication Type** is enabled if one of the above check boxes is checked:

#### Authentication Type

Select the authentication type. This is the type of external server that is used. You can select one of the following options:

- MSAD (Microsoft Active Directory)
- LDAP (Lightweight Directory Access Protocol)

By default, 'MSAD' is selected; however, you can change it.

5. If you check the box, then the installer navigates to the following screen on clicking 'Next' button.

**Figure 1-27 Oracle Banking Installer- Property File Creation**

No.	Name	Value
1	LDAP SERVER URL	LDAP://10.10.10.10:111
2	LDAP SSL ENABLED	<input type="checkbox"/>
3	SECURITY AUTHENTICATIO...	Simple
4	DOMAIN NAME	I-FLEX.COM
5	LDAP SERVER TIMEOUT	0

6. Specify the following LDAP server details, refer the table below:

Table 1-14 Fields

Field	Description
<b>LDAP Server URL</b>	Specify the URL to access the LDAP server where the external user ID and password are maintained.
<b>LDAP SSL Enabled</b>	<p>Check this box if the LDAP server is SSL enabled. If you check this box, then you need to specify the SSL port also in the field <b>LDAP SERVER URL</b>.</p> <p>By default, this check box is unchecked. However, you can change this.</p>
<b>Security Authentication Type</b>	<p>Depending on the authentication mechanism supported by the LDAP server, select one of the following:</p> <ul style="list-style-type: none"><li>• <b>Simple</b></li><li>• <b>Strong</b></li></ul> <p>Note the following:</p> <ul style="list-style-type: none"><li>• Different servers support different authentication mechanisms.</li><li>• By default, the security authentication type is '<b>Simple</b>'; however, you can change this.</li></ul>
<b>Domain Name</b>	Specify the domain name.
<b>LDAP Server Timeout</b>	<p>Specify the LDAP server timeout in milliseconds. This must be a positive integer value. For example you can specify 1000, 10000 or 5000. If it is zero or less, it indicates that no read timeout is specified. Then the wait for the response infinite until it is received.</p> <p>By default, the LDAP server timeout is zero; however, you can change this.</p>

7. Click '**Next**'. The following screen is displayed:

**Figure 1-28 Oracle Banking Installer- Property File Creation**

8. Specify the following details, refer the table:

**Table 1-15 Fields**

Field	Description
<b>XSD Path</b>	Specify the path to the XSD file. File name is not required. File separator must be '/'. There must be a '/' at the end. All the relevant XSD files must be manually copied to this location. Example: For Windows: D:\Kernel11.1\GW_WS\XSD\ For Linux: /Kernel11.1/GW_WS/XSD/
<b>Logger File</b>	Specify the path to the ' <b>gw_ws_logger.properties</b> ' file with the file name. The file must be manually copied to the specified location. Example: For windows: D:\Kernel11.1\GW_WS\config\gw_ws_logger.properties For Linux: /Kernel11.1/GW_WS/config/gw_ws_logger.properties
<b>Debug Path</b>	Specify the path to the folder where the application creates the logs. There must be a '/' at the end. You need to manually create the specified folder structure. Example: For windows: D:\Kernel11.1\GW_WS\log\ For Linux: /Kernel11.1/GW_WS/log/

Table 1-15 (Cont.) Fields

Field	Description
<b>Security Key for Encryption</b>	Specify the security key for the Encryption, here in this case it is 'Oraclefinancialsolutions'.
<b>SMS Pool Name</b>	Specify SMS Pool Name, here in this case it is 'jdbc/fc/devDSSMS'.
<b>DataSource</b>	The JDBC data source is an object bound to JNDI tree and provides database connectivity through a pool of JDBC connections.
<b>POSS Datasource</b>	Check this box if POSS is required. If you check this box, you need to specify the POSS Datasource Name in the field below this.
<b>OPSS CSF Available</b>	Indicate whether OPSS-CSF is installed or not. Choose this only if Oracle Platform Security Services - Credential Store Framework (CSF) is installed as per the guidelines in the pre-requisite document. It is recommended that you install CSF for safeguarding application specific security credentials.
<b>Distributed Schema</b>	If the schema is distributed, select 'Yes'. If the schema is not distributed, select 'No'.
<b>MSG IN LOG Required</b>	Choose Yes/No from drop down box.
<b>MSG OUT LOG Required</b>	Choose Yes/No from drop down box.
<b>Integration with CN Logger</b>	Choose this check box if integration with CN logger is required.

9. Specify the following details.

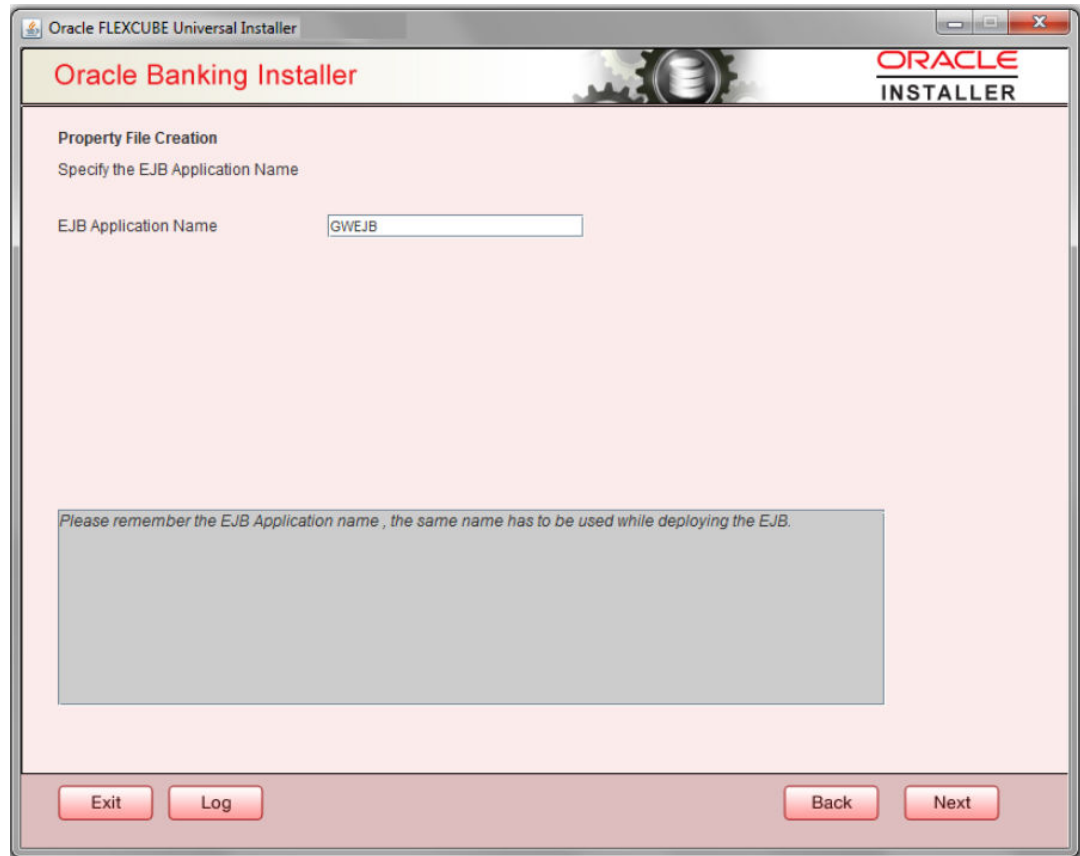
**EJB Application Name**

Specify the name of the EJB application deployed.

E.g.: GWEJB.

Click 'Next'. The following screen is displayed.

**Figure 1-29 Oracle Banking Installer- EJB Application Name**



10. Specify the following details:

**Figure 1-30 Oracle Banking Installer- Gateway Property File Creation**

Oracle FLEXCUBE Universal Installer

## Oracle Banking Installer

Gateway Property File Creation  
Current screen provides an option for modifying WebServices Properties

No.	Name	Value
1	EJB JNDI Name	#com.ofss.fcubs.gw.ejb.GWEJBRemote
2	Application Server URL	http://10.10.10.10:7001
3	User Name	infra
4	Password	*****
5	EJB Look Up	

Application Type: **INTEGRATED**

Application type can later be edited in env.properties

Exit Log Back Next

**Table 1-16 Fields**

Field	Description
<b>EJB JNDI Name</b>	<p>If you build the EJB application with GWEJB name, this will create the name with which the EJB EAR file is built.</p> <p>If you select EJB Call Type as REMOTE, this will create '&lt;EJB_APPLICATION_NAME&gt;#com.ofss.fcubs.gw.ejb.GWEJBRemote' in 'GW_WS_Prop.properties' file</p> <p>Example: Weblogic/Websphere : GWEJB #com.ofss.fcubs.gw.ejb.GWEJBRemote</p>
<b>Application Server URL</b>	<p>Specify the URL of the application server where the webservice application is hosted.</p> <p>Example: Weblogic: t3://10.10.10.10:7001 Or Websphere: iiop://10.10.10.10:2815</p>
<b>User Name</b>	<p>Specify the user name to access the application server where the EJB application is deployed.</p> <p>Example: infra</p>
<b>Password</b>	Specify the password for the above user name.

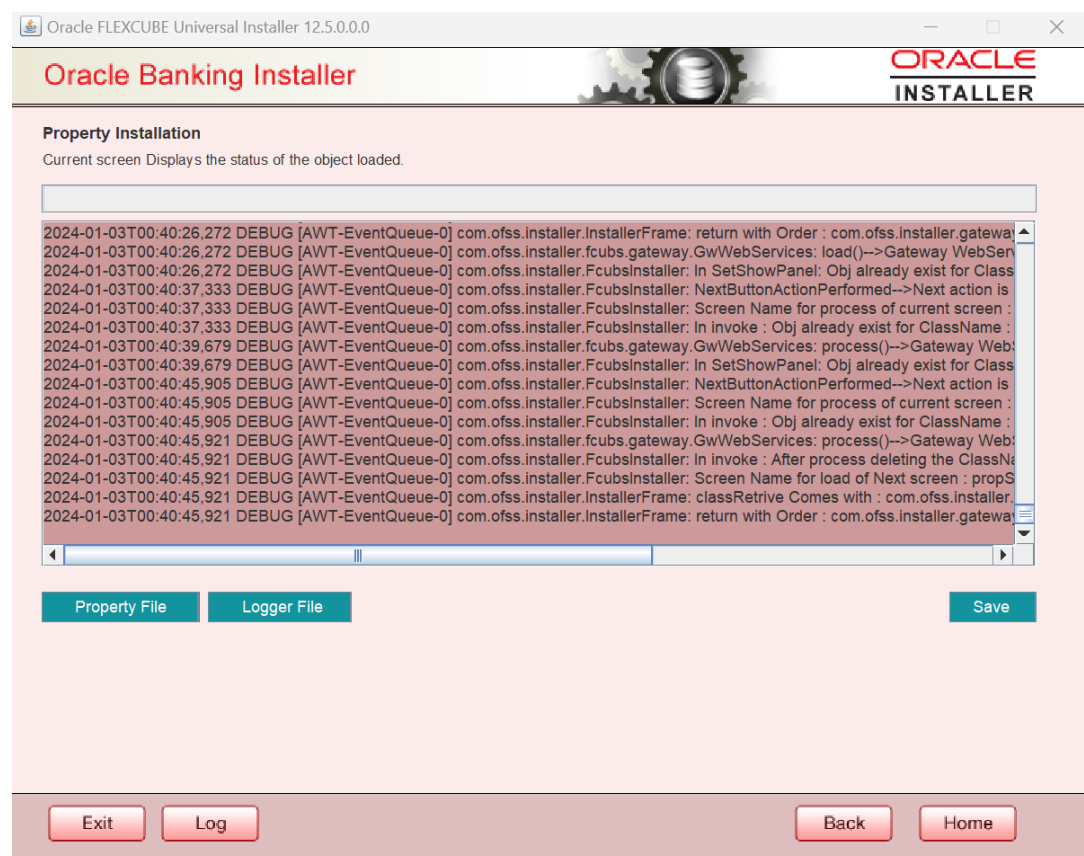
**Table 1-16 (Cont.) Fields**

Field	Description
<b>EJB Look Up</b>	Specify the EJB look up type from the drop down-list. The options are LOCAL/REMOTE
<b>Application Type</b>	Specify the Application Type from the drop down list: <ul style="list-style-type: none"> <li>If the Application type is '<b>INTEGRATED</b>' then the EJB look up type should be select as '<b>LOCAL</b>'</li> <li>If the Application type is '<b>INDIVIDUAL</b>' then the EJB look up type should be select as '<b>REMOTE</b>' and EJB should configure in any server. ('<b>REMOTE</b>' only works with combination of EJB &amp; GWWS )</li> <li>The Installer creates two files viz. 'gw_ws_logger.properties' and 'GW_WS_Prop.properties' in the path provided to save the files.</li> </ul>

Click **Next**. The following screen is displayed. The property file will be created in a temporary folder.

- Click **Property File** to view the status of the created property file.

**Figure 1-31 Property Installation**



- Click '**Save**' to save the created property file in the desired location.
- Click '**Continue**' to continue the installation process with gateway application type.
- Click '**Next**' to navigate to the installer home screen.

The property file will be created in the specified folder.

15. If Application Server is "**Websphere**" and EJB Look Up is "**REMOTE**", change below entry in GW\_WS\_Prop.properties:

EJB\_CTX\_FACTORY=weblogic.jndi.WLInitialContextFactory

to

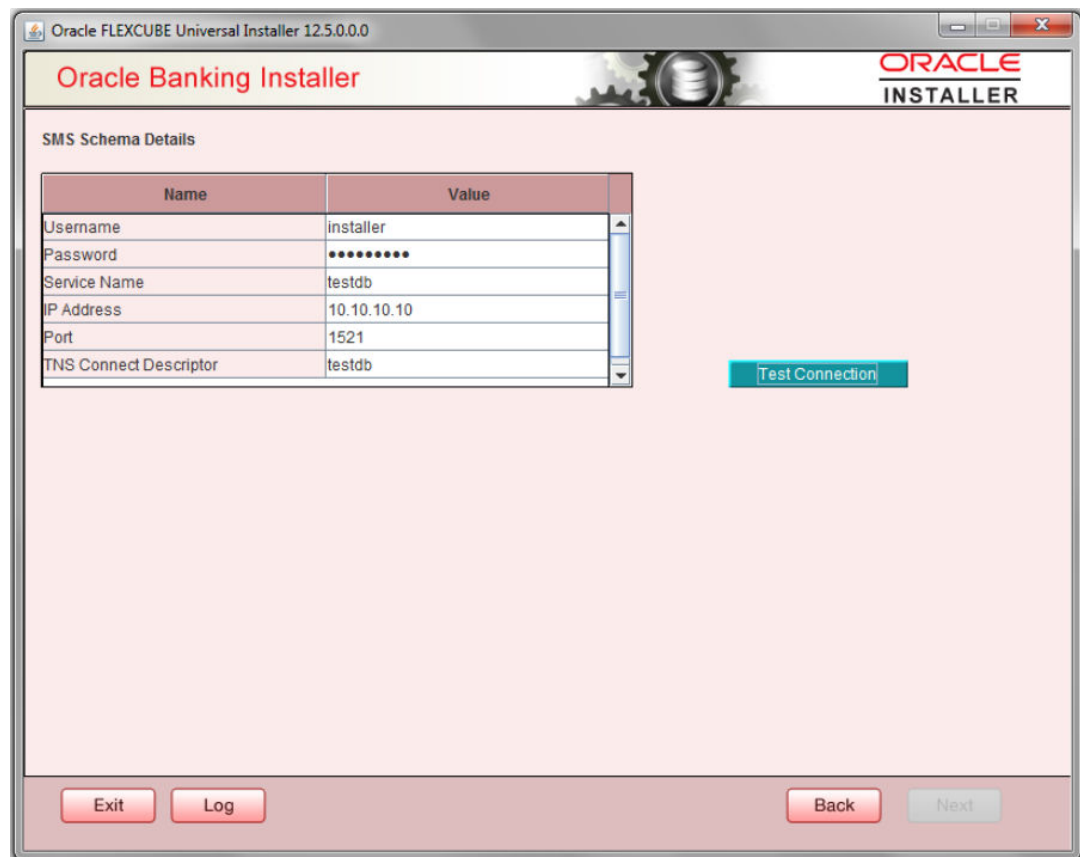
EJB\_CTX\_FACTORY=com.ibm.websphere.naming.WsnInitialContextFactory

## 1.1.5 REST Services Application

Follow the steps given below:

1. Select **Rest Services** as the application type as shown in the below Screen.
2. Click **Next**. The following screen is displayed to capture Schema details. Enter valid username, password, IP Address, port and TNS descriptor and click on **Test Connection**.

**Figure 1-32 Oracle Banking Installer- SMS Schema Details**



Oracle FLEXCUBE Universal Installer 12.5.0.0.0

**Oracle Banking Installer**

**ORACLE INSTALLER**

SMS Schema Details

Name	Value
Username	installer
Password	*****
Service Name	testdb
IP Address	10.10.10.10
Port	1521
TNS Connect Descriptor	testdb

3. Successful test connection will enable Next button. Click on it o proceed to next page.



**Figure 1-33 Oracle Banking Installer- REST EJB Properties**

Oracle FLEXCUBE Universal Installer

**Oracle Banking Installer** ORACLE INSTALLER

**REST EJB Properties**  
Current screen provides an option for modifying the REST EJB Properties

REST EJB Logger File: /Kernel11.1/REST\_EJB/config/gw\_restejb\_logger.properties

REST EJB Debug Path: /Kernel11.1/REST\_EJB/log/

REST EJB Security Key for Encryption: oraclefinancialsolutions

REST EJB Msg Schema Pool Name: jdbc/fcdevDSSMS

MSG IN log Required: No

MSG OUT log Required: No

Exit Log Back Next

In above page, Enter the below REST EJB details, refer the table below:

**Table 1-17 Fields**

Field	Description
<b>REST EJB Logger File</b>	Enter logger property file path.
<b>REST EJB Debug Path</b>	Enter path where debugs are to be written.
<b>REST EJB Security Key for Encryption</b>	Specify the security key for the Encryption. In this case it is 'oraclefinancialsolutions'.
<b>REST EJB Msg Schema Pool Name</b>	Enter valid pool name. by default it is : jdbc/fcdevDSSMS
<b>MSG IN LOG Required</b>	Choose Yes/No from drop down box.
<b>MSG OUT LOG Required</b>	Choose Yes/No from drop down box

- Click on **'Next'** Button to enter REST Services information.

**Figure 1-34 Oracle Banking Installer- REST Services Properties and REST EJB Details**

Oracle FLEXCUBE Universal Installer 12.5.0.0.0

**Oracle Banking Installer**

REST Services Properties

Current screen provides an option for modifying the REST Services Properties

REST Services Logger File: /Kernel11.1/RESTServices/config/gw\_rest\_logger.properties

REST Services Debug Path: /Kernel11.1/RESTServices/log/

REST Services Security Key for Encryption: oraclefinancialsolutions

REST Services Msg Schema Pool Name: jdbc/fcdevDSSMS

Authentication Scheme: FLEXCUBE

REST Client ID: oracle

REST Client Secret: CustomerServer

Access Token URL: http://10.184.132.161:14100/ms\_oauth/oauth2/endpoints/oauthservice/tokens

REST EJB Details

CTX Factory: weblogic.jndi.WLInitialContextFactory

Provider URL: t3://localhost:7030

Security Principal: weblogic

Security Credentials: .....

JNDI Name: GWRestEJB#com.ofss.fcc.gw.rest.GWRestRemote

Exit Log Back Next

This Screen captures below properties, refer the table below:

**Table 1-18 Fields**

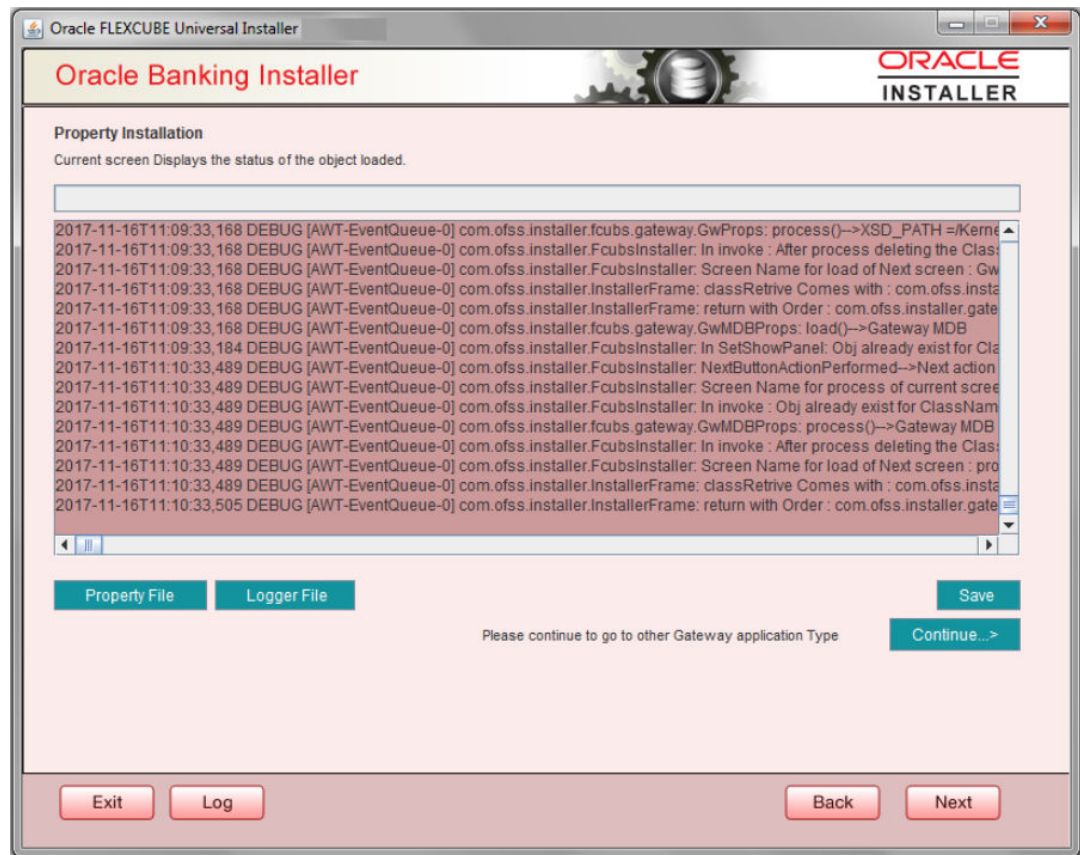
Field	Description
<b>REST Services Logger File</b>	Enter logger property file path.
<b>REST Services Debug Path</b>	Enter path where debugs are to be written.
<b>REST Services Security Key for Encryption</b>	Specify the security key for the Encryption. In this case it is 'oraclefinancialsolutions'.
<b>REST Services Msg Schema Pool Name</b>	Enter valid pool name. by default it is : jdbc/fcdevDSSMS
<b>Authentication Scheme</b>	<p>OAUTH and FLEXCUBE are two types of Authentication Schemes available.</p> <p>Please note, for FLEXCUBE authentication Scheme, REST Client ID, REST Client Secret, Access Token URL are disabled.</p> <p>The same has to be entered if AOUTH is selected.</p>
<b>CTX factory</b>	Provide valid CTX factory information.
<b>Provider URL</b>	Enter URL with valid port number.
<b>Security Principal</b>	Provide Security principal username.
<b>Security Credentials</b>	Provide Security principal password.

Table 1-18 (Cont.) Fields

Field	Description
JNDI Name	JNDI Name will be defaulted based on application server selected.

Click on **Next** button.

Figure 1-35 Oracle Banking Installer- Property File Creation



5. Click **Property File** to view the created property file.
6. Click **Save** to save the created property file in the desired location.
7. Click **Continue** to continue the installation process with gateway application type.
8. Click **Next** to navigate to the installer home screen.

The property file will be created in a temporary folder.

For Gateway MDB EAR Building refer *Treasury Management EAR Building document*.