

Oracle® Banking Treasury Management

Development Workbench - Tracking Changes



Release 14.8.1.0.0
October 2025

ORACLE®

Copyright © 2020, 2025, Oracle and/or its affiliates.

This software and related documentation are provided under a license agreement containing restrictions on use and disclosure and are protected by intellectual property laws. Except as expressly permitted in your license agreement or allowed by law, you may not use, copy, reproduce, translate, broadcast, modify, license, transmit, distribute, exhibit, perform, publish, or display any part, in any form, or by any means. Reverse engineering, disassembly, or decompilation of this software, unless required by law for interoperability, is prohibited.

The information contained herein is subject to change without notice and is not warranted to be error-free. If you find any errors, please report them to us in writing.

If this is software, software documentation, data (as defined in the Federal Acquisition Regulation), or related documentation that is delivered to the U.S. Government or anyone licensing it on behalf of the U.S. Government, then the following notice is applicable:

U.S. GOVERNMENT END USERS: Oracle programs (including any operating system, integrated software, any programs embedded, installed, or activated on delivered hardware, and modifications of such programs) and Oracle computer documentation or other Oracle data delivered to or accessed by U.S. Government end users are "commercial computer software," "commercial computer software documentation," or "limited rights data" pursuant to the applicable Federal Acquisition Regulation and agency-specific supplemental regulations. As such, the use, reproduction, duplication, release, display, disclosure, modification, preparation of derivative works, and/or adaptation of i) Oracle programs (including any operating system, integrated software, any programs embedded, installed, or activated on delivered hardware, and modifications of such programs), ii) Oracle computer documentation and/or iii) other Oracle data, is subject to the rights and limitations specified in the license contained in the applicable contract. The terms governing the U.S. Government's use of Oracle cloud services are defined by the applicable contract for such services. No other rights are granted to the U.S. Government.

This software or hardware is developed for general use in a variety of information management applications. It is not developed or intended for use in any inherently dangerous applications, including applications that may create a risk of personal injury. If you use this software or hardware in dangerous applications, then you shall be responsible to take all appropriate fail-safe, backup, redundancy, and other measures to ensure its safe use. Oracle Corporation and its affiliates disclaim any liability for any damages caused by use of this software or hardware in dangerous applications.

Oracle®, Java, MySQL, and NetSuite are registered trademarks of Oracle and/or its affiliates. Other names may be trademarks of their respective owners.

Intel and Intel Inside are trademarks or registered trademarks of Intel Corporation. All SPARC trademarks are used under license and are trademarks or registered trademarks of SPARC International, Inc. AMD, Epyc, and the AMD logo are trademarks or registered trademarks of Advanced Micro Devices. UNIX is a registered trademark of The Open Group.

This software or hardware and documentation may provide access to or information about content, products, and services from third parties. Oracle Corporation and its affiliates are not responsible for and expressly disclaim all warranties of any kind with respect to third-party content, products, and services unless otherwise set forth in an applicable agreement between you and Oracle. Oracle Corporation and its affiliates will not be responsible for any loss, costs, or damages incurred due to your access to or use of third-party content, products, or services, except as set forth in an applicable agreement between you and Oracle.

Contents

1	Preface	
1.1	Purpose	1
1.2	Audience	1
1.3	Documentation Accessibility	2
1.4	Critical Patches	2
1.5	Diversity and Inclusion	2
1.6	Basic Actions	2
1.7	Related Documents	3
1.8	Conventions	3
1.9	Screenshot Disclaimer	3
1.10	Acronyms and Abbreviations	3
1.11	Symbols and Icons	4
1.12	Prerequisite	5
2	View Changes	
2.1	Process to View Changes	1
3	Change Report	
3.1	Process Steps	2
4	Functionality Demonstration	
5	Order Changes	

1

Preface

This document describes the steps to develop the notification XML and notification trigger using Oracle FLEXCUBE Development Workbench.

- [Purpose](#)
- [Audience](#)
- [Documentation Accessibility](#)
- [Critical Patches](#)
- [Diversity and Inclusion](#)
- [Basic Actions](#)
- [Related Documents](#)
- [Conventions](#)
- [Screenshot Disclaimer](#)
- [Acronyms and Abbreviations](#)
The list of the acronyms and abbreviations used in this guide are as follows:
- [Symbols and Icons](#)
The lists of symbols, buttons and shortcut key that are used in the application to perform various tasks are covered in this topic.
- [Prerequisite](#)

1.1 Purpose

This guide is designed to help acquaint you with the Oracle BankingTrade Finance application. This guide provides answers to specific features and procedures that the user need to be aware of the module to function successfully.

User can further obtain information specific to a particular field by placing the cursor on the relevant field and pressing <F1> on the keyboard.

1.2 Audience

This guide is intended for the following User/User Roles:

Table 1-1 Audience

Role	Function
Back office data entry clerk	Input functions for funds
Back office managers/officers	Authorization functions
Product Managers	Product definition and authorization
End of day operators	Processing during end of day / beginning of day

1.3 Documentation Accessibility

For information about Oracle's commitment to accessibility, visit the Oracle Accessibility Program website at <http://www.oracle.com/pls/topic/lookup?ctx=acc&id=docacc>.

Access to Oracle Support

Oracle customer access to and use of Oracle support services will be pursuant to the terms and conditions specified in their Oracle order for the applicable services.

1.4 Critical Patches

Oracle advises customers to get all their security vulnerability information from the Oracle Critical Patch Update Advisory, which is available at [Critical Patches, Security Alerts and Bulletins](#). All critical patches should be applied in a timely manner to ensure effective security, as strongly recommended by [Oracle Software Security Assurance](#).

1.5 Diversity and Inclusion

Oracle is fully committed to diversity and inclusion. Oracle respects and values having a diverse workforce that increases thought leadership and innovation. As part of our initiative to build a more inclusive culture that positively impacts our employees, customers, and partners, we are working to remove insensitive terms from our products and documentation. We are also mindful of the necessity to maintain compatibility with our customers' existing technologies and the need to ensure continuity of service as Oracle's offerings and industry standards evolve. Because of these technical constraints, our effort to remove insensitive terms is ongoing and will take time and external cooperation.

1.6 Basic Actions

Table 1-2 Basic Actions

Action	Description
Approve	Used to approve the initiated report. This button is displayed, once the user click Authorize .
Audit	Used to view the maker details, checker details, and report status.
Authorize	Used to authorize the report created. A maker of the screen is not allowed to authorize the report. Only a checker can authorize a report, created by a maker.
Close	Used to close a record. This action is available only when a record is created.
Confirm	Used to confirm the performed action.
Cancel	Used to cancel the performed action.
Compare	Used to view the comparison through the field values of old record and the current record. This button is displayed in the widget, once the user click Authorize .
Collapse All	Used to hide the details in the sections. This button is displayed, once the user click Compare .

Table 1-2 (Cont.) Basic Actions

Action	Description
Expand All	Used to expand and view all the details in the sections. This button is displayed, once the user click Compare .
New	Used to add a new record. When the user click New , the system displays a new record enabling to specify the required data.
OK	Used to confirm the details in the screen.
Save	Used to save the details entered or selected in the screen.
View	Used to view the report details in a particular modification stage. This button is displayed in the widget, once the user click Authorize .
View Difference only	Used to view a comparison through the field element values of old record and the current record, which has undergone changes. This button is displayed, once the user click Compare .
Unlock	Used to update the details of an existing record. System displays an existing record in editable mode.

1.7 Related Documents

For more information refer to the Oracle Banking manuals on:

- Development of Launch Forms and Others Screens
- Enterprise Collaterals User Guide
- Enterprise Limits and Collaterals Common User Guide

1.8 Conventions

The following text conventions are used in this document:

Convention	Meaning
boldface	Boldface type indicates graphical user interface elements associated with an action, or terms defined in text or the glossary.
<i>italic</i>	Italic type indicates book titles, emphasis, or placeholder variables for which you supply particular values.
monospace	Monospace type indicates commands within a paragraph, URLs, code in examples, text that appears on the screen, or text that you enter.

1.9 Screenshot Disclaimer

Personal information used in the interface or documents is dummy and does not exist in the real world. It is only for reference purposes.

1.10 Acronyms and Abbreviations

The list of the acronyms and abbreviations used in this guide are as follows:

Table 1-3 Acronyms and Abbreviations

Acronyms	Abbreviations
CIF	Customer Information File
CASA	Current Account and Savings Account
DDA	System that holds the CASA account and balances
ELCM	Enterprise Limits and Collateral Management
ECA	External Credit Approval
FCUBS	Oracle FLEXCUBE Universal Banking Solution
GW	Gateway
HTTP	Hyper Text Transfer Protocol
ID	Identification Number
Mark EOTI	Mark End of Transaction Input
Mark TI	Mark Transaction Input
OFSA	Oracle Financial Services Analytical Applications
ORMD	Oracle Revenue and Billing Management
PK	Primary Key
RDBMS	Relational Data Base Management System
SMS	Security Services
UI	User Interface
VD	Value Date
XML	Extensible Mark-up Language
XSD	XML Schema Definition
XSLT	Extensible Stylesheet Language Transformations

1.11 Symbols and Icons

The lists of symbols, buttons and shortcut key that are used in the application to perform various tasks are covered in this topic.

Table 1-4 Symbols and Icons


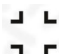




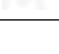
Icons	Function
	Perform search
	Minimize
	Navigate to the next record
	Navigate to the previous record
	Toggle OFF
	Toggle ON
	Delete

Table 1-4 (Cont.) Symbols and Icons






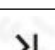
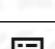

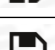





Icons	Function
	Click this icon to add a new row.
	Click this icon to delete an existing row.
	List view
	Maximize
	Navigate to the first record
	Navigate to the last record
	Advance search
	Search record
	Save the record
	Reset the record
	Clear the record

Table 1-5 Symbols and Icons - Audit Details

Icons	Function
	A user
	Branch details
	Date and Time

1.12 Prerequisite

Specify the **User ID** and **Password**, and login to **Home** screen.

2

View Changes

The **View Changes** page allows the developer to see what exact change has been done in the RADXML as part of the various nodes in the Workbench across different releases.

Track changes display various changes in each node in the RADXML through color. For example, the modified values are displayed in Blue and the new values in Green color.

The main page of **View Changes** looks like a function generation page. On the **View Changes** page, the user is allowed to load a RADXML. Then Workbench shows all the changes done in the RADXML across the release and release type accordingly with two different colors:

- **Blue** indicates Modified
- **Green** indicates New

So by using **View Changes** option in Development Workbench, the user can easily identify the changes done in the RADXML across releases and release types.

- [Process to View Changes](#)

This topic explains systematic instructions to upload the RADXML and view changes in the RADXML across releases and release types.

2.1 Process to View Changes

This topic explains systematic instructions to upload the RADXML and view changes in the RADXML across releases and release types.

Development Workbench allows viewing the changes done as part of Child, Cluster, or Custom Release. Upon loading the Cluster or Custom or Child RADXML, it shows the modifications done as part of Cluster or Custom or Child.

On the Development Workbench, specify the **User ID** and **Password** and login to the **Homescreen**.

1. On **Homescreen**, under the **Browser** node, click **Tracking Changes**.
2. Under **Tracking Changes**, click **View Changes**.

The **View Changes** screen displays.

Figure 2-1 View Changes

Note

In the beginning, only the **Load Screen XML** field is enabled.

3. On the **View Changes** screen, in the **Load Screen XML** field, click **Browse**.

The **Upload** screen displays.

Figure 2-2 Upload

4. On the **Upload** screen, click **Browse** to upload the file.
The **Choose File to Upload** pop-up window displays.

Figure 2-3 Choose File to Upload

5. Navigate to the file path, and select the file.
6. Click **Open**.

After loading the RADXML, the **View Changes** pop-up window displays which notifies the details of the Function ID like **Function Type**, **Release Code**, and **Release Type**.

Figure 2-4 View Changes

This window notifies the changes done in the RADXML as part of Cluster Release. In this screen, the Green color represents new items in this release and the Blue color represents the modified items in this release.

7. On the **View Changes** screen, click **OK**.
The **Block Field Properties** screen displays with RADXML changes.

Figure 2-5 Block Field Properties

3

Change Report

The **Change Report** allows us to view the changes in the provided base and source list of RADXMLs and helps to get the changes done in the two RADXMLs across releases and release types.

The **View Changes** Report allows the developer to see what exact change is done in the RADXML's as part of the various nodes in the Development Workbench across two different releases or release types.

The reports are generated based on two formats:

- **Function Specific** - The **Function Specific** format compares RADXMLs based on the function name.
- **Parent-Child** - The **Parent-Child** format compares RADXMLs based on the parent-child relation.

The below nodes are compared and a report is generated based on the differences found in the two RADXMLs given in the list.

- **PREFERENCES**
- **MENU_DETAILS**
- **DATASOURCES**
- **COLUMNS**
- **LOVS**
- **LOV_DETAILS**
- **DATA_BLOCKS**
- **BLOCK_FIELDS**
- **DATASOURCES_ATTACHED**
- **CUSTOM_ATTRIBUTES**
- **LOV_RETURN_FIELDS**
- **LOV_BIND_VARS FIELD_EVENTS**
- **LOV_OFF_LINE_BIND_VARS**
- **LOV_OFF_LINE_RETURN_FIELDS**
- **SCREENS SCREEN_ARGUMENTS**
- **TABS**
- **SECTIONS**
- **PARTITIONS**
- **FIELDSETS**
- **FIELDSET_FIELDS**
- **SUMMARY**

- **SUMMARY_DETAILS**
- **LAUNCHFORMS**
- **CALLFORMS**
- **ACTIONS**
- **WEB_SERVICES**
- [Process Steps](#)

This topic explains the systematic instructions to view the changes report using the source file list and base file list in an excel format.

3.1 Process Steps

This topic explains the systematic instructions to view the changes report using the source file list and base file list in an excel format.

On the Development Workbench, specify the **User ID** and **Password** and login to the **Homescreen**.

1. On **Homescreen**, under the **Browser** node, click **Tracking Changes**.
2. Under **Tracking Changes**, click on **Change Report**.

The **View Changes Excel** screen displays.

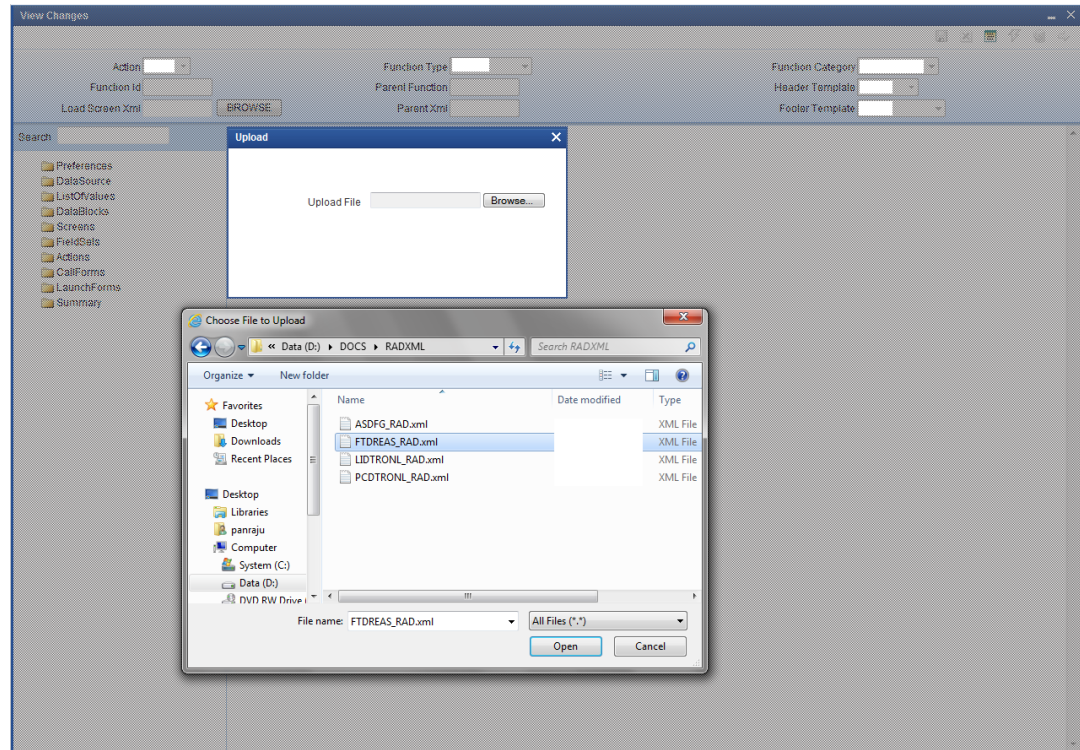
Figure 3-1 View Changes Excel

SI.No	File Name	File Status	Error Description
-------	-----------	-------------	-------------------

3. On the **View Changes Excel** screen, in the **Source File List** field, click **Browse**.

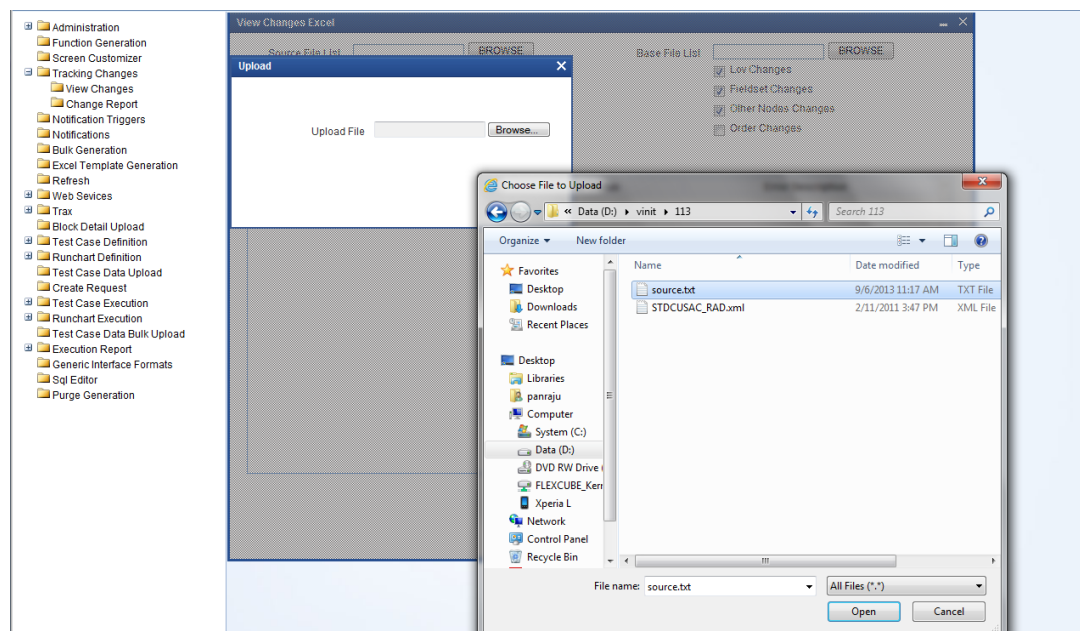
The **Upload** screen displays.

Figure 3-2 Upload



4. On the **Upload** screen, click **Browse**.
The **Choose File to Upload** pop-up window displays.

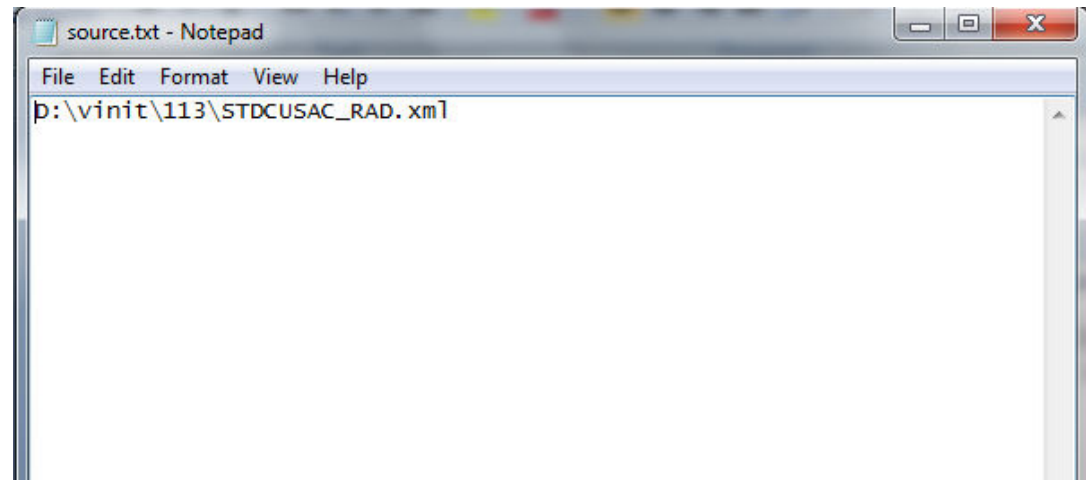
Figure 3-3 Choose File to Upload



5. On the **Choose File to Upload** pop-up window, select the source file (source.txt) and click **Open**.

The source file list is a text file that contains the absolute path of all the RADXMLs to be compared.

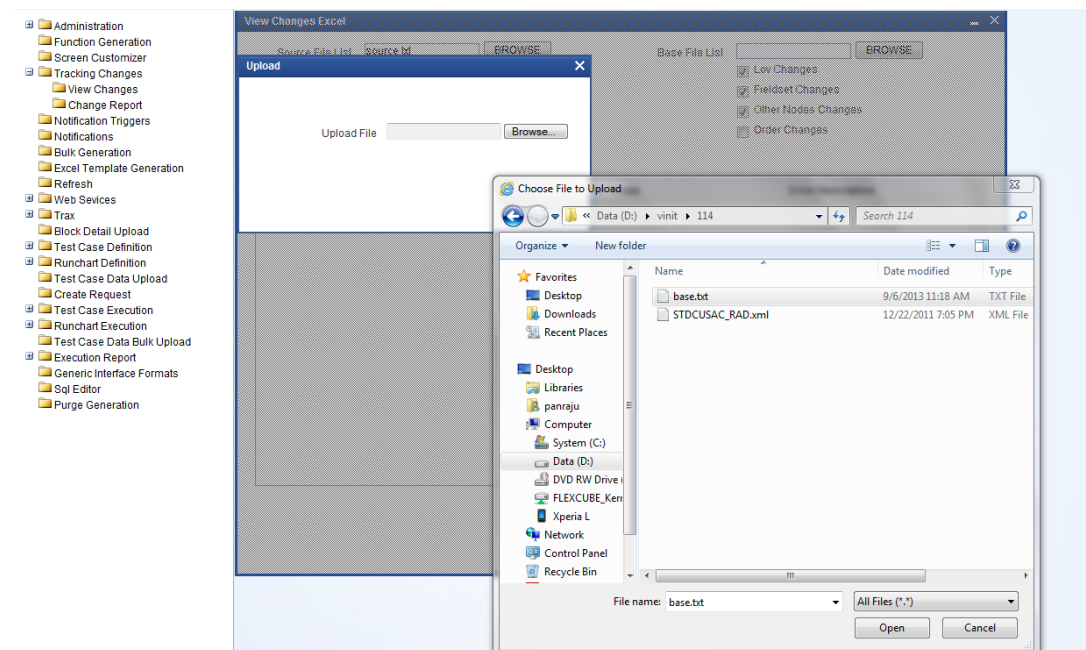
Figure 3-4 Content of source.txt file



In the above screen, here **STDCUSAC** is the source RADXML that has to be compared as an example. If a **View Changes** report of more than one Function ID is required, the absolute path of each RADXML has to be specified in a new line.

6. On the **View Changes Excel** screen, in the **Base File List** field, click **Browse**.
The **Upload** screen displays.

Figure 3-5 Base File Upload

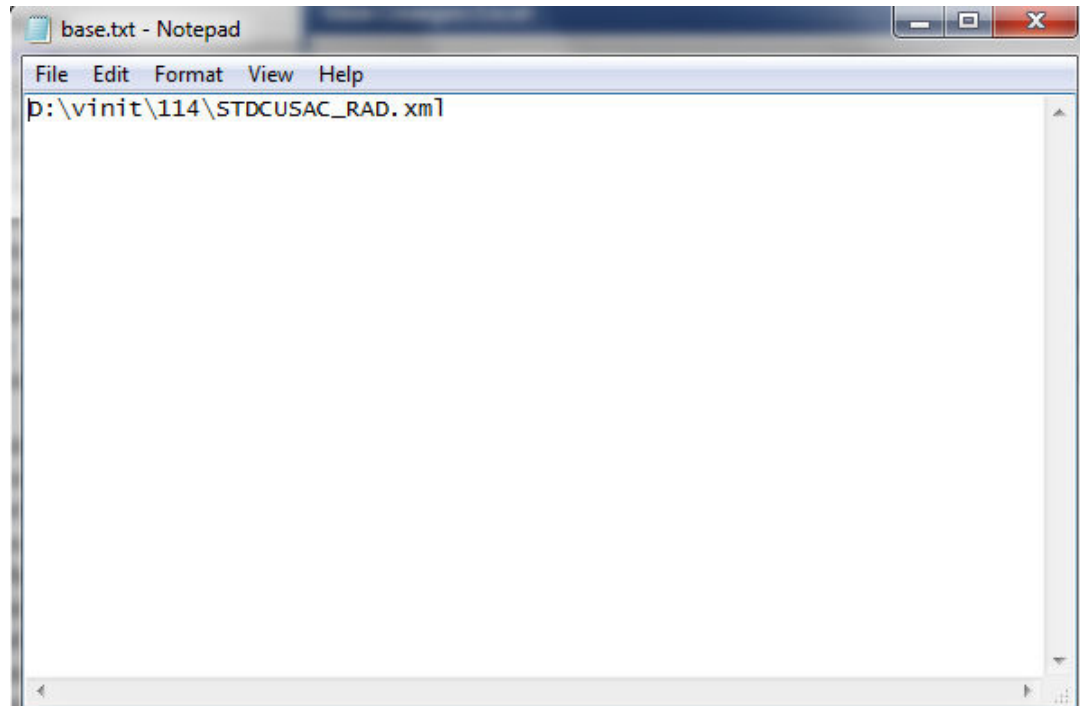


7. On the **Upload** screen, click **Browse**.

8. On the **Choose File to Upload** pop-up window, select the base file (base.txt) and click **Open**.

The base file list is a text file that contains the absolute path of all the base RADXMLs to be compared.

Figure 3-6 Content of basee.txt file



In the above screen, here **STDCUSAC** is the base RADXML that has to be compared as an example. If a **View Changes** report of more than one Function ID is required, the absolute path of each base RADXML has to be specified in a new line.

9. On the **View Changes Excel** screen, specify the fields.

Table 3-1 View Changes Excel - Field Description

Field	Description
Comparison Type	Select the Comparison Type as Function Specific from the drop-down list.
Changes	Check the following boxes to compare the below nodes. <ul style="list-style-type: none"> • Data Source Changes • Data Blocks Changes • Screen Changes • LOV Changes • Fieldset Changes • Other Nodes Changes
File Location	Select the file location as a client if the path provided is in the client machine.

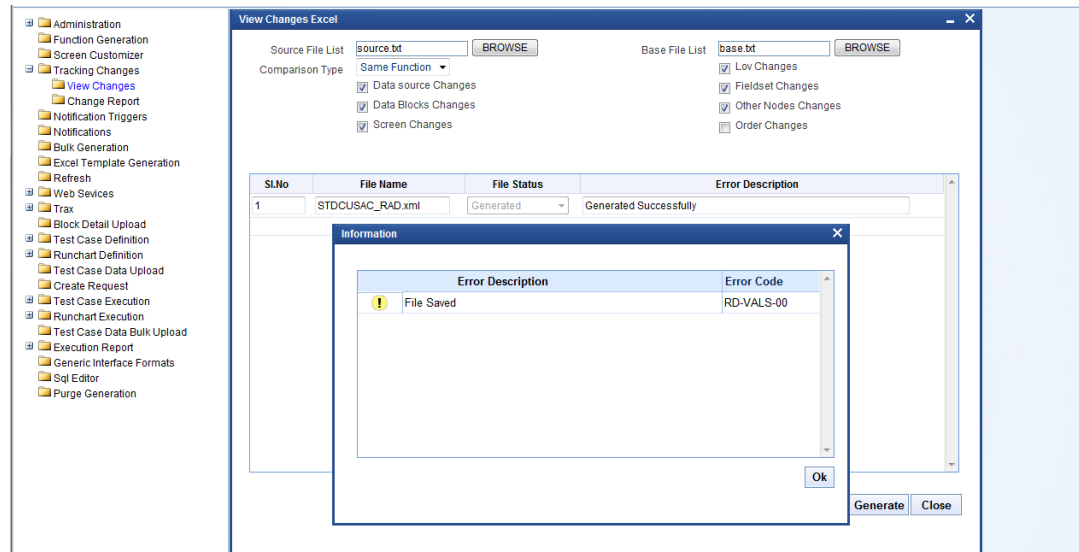
10. On the **View Changes Excel** screen, click **Generate**.

Note

The processing time varies depending on the number of files provided, the size of each file, etc.

After Completion of the process, the system displays the status. File status is generated successfully if the comparison is successful.

Figure 3-7 View Changes Excel_File Status



Generated Files -

- a. **Excel Report of Changes** - A war file named RAD is created and shown after a successful process of comparing, which will contain Excel files for the particular source RADXMLs. For example, PANDETIP_FRONTEND_LOG.txt
- b. **Log Files**
 - **View Comparison Log** - This contains the status of all the files compared.
 - **View Comparison Report** - This file is used for troubleshooting.

All the nodes will be compared and will be painted in the excel sheet based upon the values of the base and source list of RADXML's, the values will be having 3 statuses (**NEW, MODIFIED, DELETED**). Based on this status old and new values will be shown in the view changes report.

4

Functionality Demonstration

This topic explains the functionality of the view changes report.

On the STDCUSAC.xls file, click the **Copyright Clause** tab to view the copyright details.

Figure 4-1 Copyright Clause

This source is part of the FLEXCUBE Software System and is copyrighted by Oracle Financial Services Software Limited.

All rights reserved. No part of this work may be reproduced, stored in a retrieval system, adopted or transmitted in any form or by any means, electronic, mechanical, photographic, graphic, optic recording or otherwise, translated in any language or computer language, without the prior written permission of Oracle Financial Services Software Limited.

Oracle Financial Services Software Limited.
10-11, SDF I, SEEPZ, Andheri (East),
Mumbai -400096.
India.
Copyright 2008-2010 by Oracle Financial Services Software Limited. All rights reserved.

The comparison of STDCUSAC (**FCUBS_11.2.0**) and STDCUSAC (**FCUBS_11.4.0**) is displayed in the Header tab.

Figure 4-2 Header

		SOURCE		BASE	
	FUNCTION_ID	STDCUSAC		STDCUSAC	
	RELEASE_CODE	FCUBSV.UM 11.2.0.0.0.0.0		FCUBS_11.4.0	
	RELEASE_TYPE	KERNEL		KERNEL	
	FUNCTION_TYPE	P		P	
	FUNCTION_CATEGORY	MAINTENANCE		MAINTENANCE	

On the **PREFERENCES** tab, the change report compares two RADXML's and forms one Dom with the nodes and displays the difference between two RADXML's with old and new values.

Figure 4-3 Preferences

STATUS	PREFERENCES	PROPERTIES	OLD VALUE	NEW VALUE
MODIFIED	MENU			
		TXN BLOCK NAME	BLK_CUST_ACCOUNT	
		TXN FIELD NAME	BRN	
		MULTI BRANCH ACCESS	Y	

STATUS	MENU DETAILS	PROPERTIES	OLD VALUE	NEW VALUE
MODIFIED	STDCUSAC			
		LBL FUNCTION DESC		LBL_STDCUSAC_FNDESC
		FUNCTION DESC		Customer Accounts Maintenance
		LBL FUNC MODULE DESC		LBL_STDCUSAC_MODULE
				-
MODIFIED	STSCUSAC			
		LBL FUNCTION DESC		LBL_STSCUSAC_FNDESC
		FUNCTION DESC		Customer Accounts Summary
		LBL FUNC MODULE DESC		LBL_STSCUSAC_MODULE
				-

The change report compares the two function id's and paints the excel sheet for the preferences node of the compared RADXML. Here in preferences, the status node is displayed as Modified and the modified node is Preferences. The property of the modified preferences node is TXN BLOCK NAME. The Old value is BLK_CUST_ACCOUNT and new value is null for the STDCUSAC (**FCUBS_11.3.0**) and STDCUSAC (**FCUBS_11.4.0**) has block_cust_account as TXN BLOCK.

Preferences will show the difference in both versions of the releases. The nodes representing here are:

- PREFERENCES
- MENU_DETAILS

On the **DATASOURCES** tab, change report compares the two function ids and paints the excel sheet for the Data Sources node of the compared RADXML. Data Sources will show the difference in both versions of the releases.

Figure 4-4 DATASOURCES

	A	B	C	D	E	F	G	H
1	STATUS	DATASOURCES	PROPERTIES	OLD VALUE	NEW VALUE			
2	MODIFIED	ICTMS_ACC_PR		prod IN (SELECT product_code FROM ictms_product_definition WHERE product_type in (T, P))	prod IN (SELECT product_code FROM ictms_product_definition WHERE product_type = T)			
3			DEFAULT WHERE					
4	MODIFIED	ACVWS_CRTUR_LMT_BAL		LIMIT_PRD = (SELECT LIMIT_PRD FROM STTM_TURNVER_PERIO DS WHERE LIMIT_CODE = p_wrk_stdcusac_v_sttms_c ust_account.TRNOVER_L MT_CODE AND to_date(global application_ date) BETWEEN LIMIT_START_DATE AND LIMIT_END_DATE)	LIMIT_PRD = (SELECT LIMIT_PRD FROM STTM_TURNVER_PERIO DS WHERE LIMIT_CODE = p_stdcusac_v_sttms_cust_ account.TRNOVER_LMT_ CODE AND to_date(global application_ date) BETWEEN LIMIT_START_DATE AND LIMIT_END_DATE)			
5			DEFAULT WHERE					
6			DATASRC TYPE	NORMAL				
7			CHILD DATASRC	N				
8								
9						STATUS	COLUMNS	PROPERTIES
10						DELETED	BRANCH_CODE	OLD VALUE
11								COLUMN NAME
12								DATATYPE
13								MAX LENGTH
14								BLOCK NAME
15						DELETED	CUST_AC_NO	CUST_AC_N
16								DATATYPE
17								MAX LENGTH
18								BLOCK NAME
19						DELETED	COLLATERAL_TYPE	COLLATERA
20								COLUMN NAME
21								DATATYPE
22								MAX LENGTH
23								BLOCK NAME
24						DELETED	COLLATERAL	COLLATERA
25								COLUMN NAME
26								DATATYPE
27								MAX LENGTH

The nodes representing on the DATASOURCES tab are:

- DATASOURCES
- COLUMNS

5

Order Changes

This topic explains the systematic instructions for the Order Changes in the View Changes Excel screen.

1. On the Development Workbench, under **Tracking Changes**, click on **Change Report**.
The **View Changes Excel** screen displays.

Figure 5-1 View Changes Excel

Sl.No	File Name	File Status	Error Description
-------	-----------	-------------	-------------------

2. On click of this order changes, the nodes are compared for the order maintained in the radxml of respective releases. The order changes will affect the following nodes:
 - a. **FIELD_ORDER**
 - b. **FIELDSET_ORDER**
 - c. **TAB_ORDER**
 - d. **SEC_ORDER**
 - e. **DATA_BLK_ORDER**
 - f. **BLK_FIELD_ORDER**

Figure 5-2 Order Changes

View Changes Excel

Source File List Browse... Base File List Browse... Comparison Type Same Function

☐ Data source Changes ☐ Low Changes

☐ Data Blocks Changes ☐ Fieldset Changes

☐ Screen Changes ☒ Order Changes

☐ Other Nodes Changes

Sl.No	File Name	File Status	Error Description
-------	-----------	-------------	-------------------

Generate Close

3. On the **View Changes Excel** screen, input the **Source File List**, **Base File List** and check the **Order Changes** checkbox.
4. Click **Generate**.

All the orders are compared between sources and base RADXML's and View Changes Excel report is generated.
5. (Assumption) On the Order Changes excel, the compared RADXML's changes are displayed.
6. Click on **Fieldsets** tab.

Order Changes for fieldsets is displayed.

Figure 5-3 Order Changes_Fieldsets

[illegible]