

Oracle® Banking Treasury Management Test Case Management



Release 14.8.1.0.0
G45902-01
October 2025



Copyright © 2020, 2025, Oracle and/or its affiliates.

This software and related documentation are provided under a license agreement containing restrictions on use and disclosure and are protected by intellectual property laws. Except as expressly permitted in your license agreement or allowed by law, you may not use, copy, reproduce, translate, broadcast, modify, license, transmit, distribute, exhibit, perform, publish, or display any part, in any form, or by any means. Reverse engineering, disassembly, or decompilation of this software, unless required by law for interoperability, is prohibited.

The information contained herein is subject to change without notice and is not warranted to be error-free. If you find any errors, please report them to us in writing.

If this is software, software documentation, data (as defined in the Federal Acquisition Regulation), or related documentation that is delivered to the U.S. Government or anyone licensing it on behalf of the U.S. Government, then the following notice is applicable:

U.S. GOVERNMENT END USERS: Oracle programs (including any operating system, integrated software, any programs embedded, installed, or activated on delivered hardware, and modifications of such programs) and Oracle computer documentation or other Oracle data delivered to or accessed by U.S. Government end users are "commercial computer software," "commercial computer software documentation," or "limited rights data" pursuant to the applicable Federal Acquisition Regulation and agency-specific supplemental regulations. As such, the use, reproduction, duplication, release, display, disclosure, modification, preparation of derivative works, and/or adaptation of i) Oracle programs (including any operating system, integrated software, any programs embedded, installed, or activated on delivered hardware, and modifications of such programs), ii) Oracle computer documentation and/or iii) other Oracle data, is subject to the rights and limitations specified in the license contained in the applicable contract. The terms governing the U.S. Government's use of Oracle cloud services are defined by the applicable contract for such services. No other rights are granted to the U.S. Government.

This software or hardware is developed for general use in a variety of information management applications. It is not developed or intended for use in any inherently dangerous applications, including applications that may create a risk of personal injury. If you use this software or hardware in dangerous applications, then you shall be responsible to take all appropriate fail-safe, backup, redundancy, and other measures to ensure its safe use. Oracle Corporation and its affiliates disclaim any liability for any damages caused by use of this software or hardware in dangerous applications.

Oracle®, Java, MySQL, and NetSuite are registered trademarks of Oracle and/or its affiliates. Other names may be trademarks of their respective owners.

Intel and Intel Inside are trademarks or registered trademarks of Intel Corporation. All SPARC trademarks are used under license and are trademarks or registered trademarks of SPARC International, Inc. AMD, Epyc, and the AMD logo are trademarks or registered trademarks of Advanced Micro Devices. UNIX is a registered trademark of The Open Group.

This software or hardware and documentation may provide access to or information about content, products, and services from third parties. Oracle Corporation and its affiliates are not responsible for and expressly disclaim all warranties of any kind with respect to third-party content, products, and services unless otherwise set forth in an applicable agreement between you and Oracle. Oracle Corporation and its affiliates will not be responsible for any loss, costs, or damages incurred due to your access to or use of third-party content, products, or services, except as set forth in an applicable agreement between you and Oracle.

Contents

Preface

Purpose	i
Audience	i
Documentation Accessibility	i
Critical Patches	i
Diversity and Inclusion	ii
Conventions	ii
Screenshot Disclaimer	ii

1 Introduction

2 Overview of Test Case Management

3 Features of Development Workbench

4 Block Detail Upload

5 Excel Template Generation

6 Test Case Definition

7 Test Case Upload

8 Test Case Execution

9 Run Chart Master

10 Derivation

11 Migration of Data using TCM Tool

Preface

This document describes the steps to develop the notification XML and notification trigger using Oracle FLEXCUBE Development Workbench.

- [Purpose](#)
- [Audience](#)
- [Documentation Accessibility](#)
- [Critical Patches](#)
- [Diversity and Inclusion](#)
- [Conventions](#)
- [Screenshot Disclaimer](#)

Purpose

This manual is designed to help FLEXCUBE Application developers/users to familiarize with ORACLE FLEXCUBE Development Workbench.

Audience

This guide is intended for the central administrator of the Bank who controls the system and application parameters and ensures smooth functionality and flexibility of the banking application.

Documentation Accessibility

For information about Oracle's commitment to accessibility, visit the Oracle Accessibility Program website at <https://www.oracle.com/corporate/accessibility/>.

Access to Oracle Support

Oracle customer access to and use of Oracle support services will be pursuant to the terms and conditions specified in their Oracle order for the applicable services.

Critical Patches

Oracle advises customers to get all their security vulnerability information from the Oracle Critical Patch Update Advisory, which is available at [Critical Patches, Security Alerts and Bulletins](#). All critical patches should be applied in a timely manner to ensure effective security, as strongly recommended by [Oracle Software Security Assurance](#).

Diversity and Inclusion

Oracle is fully committed to diversity and inclusion. Oracle respects and values having a diverse workforce that increases thought leadership and innovation. As part of our initiative to build a more inclusive culture that positively impacts our employees, customers, and partners, we are working to remove insensitive terms from our products and documentation. We are also mindful of the necessity to maintain compatibility with our customers' existing technologies and the need to ensure continuity of service as Oracle's offerings and industry standards evolve. Because of these technical constraints, our effort to remove insensitive terms is ongoing and will take time and external cooperation.

Conventions

The following text conventions are used in this document:

Table 1 Conventions

Convention	Meaning
boldface	Boldface type indicates graphical user interface elements associated with an action, or terms defined in text or the glossary.
<i>italic</i>	Italic type indicates book titles, emphasis, or placeholder variables for which you supply particular values.
monospace	Monospace type indicates commands within a paragraph, URLs, code in examples, text that appears on the screen, or text that you enter.

Screenshot Disclaimer

Personal information used in the interface or documents is dummy and does not exist in the real world. It is only for reference purposes.

1

Introduction

This topic provide the list sub-topics in this test case management document.

2

Overview of Test Case Management

This topic provides an overview of Test Case Management.

This tool (provided as part of Developer Workbench) can save Test plans and execute the test cases. This is very helpful for a Testing team, where they need not do maintenance for every release. Users can execute the Run Charts & proceed with transactions.

FLEXCUBE Universal Banking Maintenance/Online Screens Test Cases into the database by uploading them in Excel sheets to the TCM tool. These Test Cases can be logically grouped to build a Run Chart to run all test cases with a single operation. The test Case Management system is designed to automate the ITRs within each release. This tool reduces a lot of time and effort for the Testing team.

The below sections explain the common administrative features of Development Workbench.

Refer to the below table for the functions of Development Workbench Admin User, Release Admin User and TCM user

Table 2-1 Types of Admin Users

Admin User	Function
Development Workbench Admin User	The main functions of Development Workbench Admin User are: <ul style="list-style-type: none">• Creating a new release• Creating Release admin for the specific release
Release Admin User	The main functions of Release Admin User are: <ul style="list-style-type: none">• Creating User ID's
TCM User	The main functions of TCM User are: <ul style="list-style-type: none">• Block Detail Upload• Test Case Definition• Test Case Upload• Create Request• Test Case Execution• Run chart Definition• Run Chart Execution

3

Features of Development Workbench

This topic explains the systematic instructions about the features of the development workbench.

In the development workbench, refer to the following features.

- Login Screen
- Homepage
- Browser
- Windows
- Options
- Sign Out

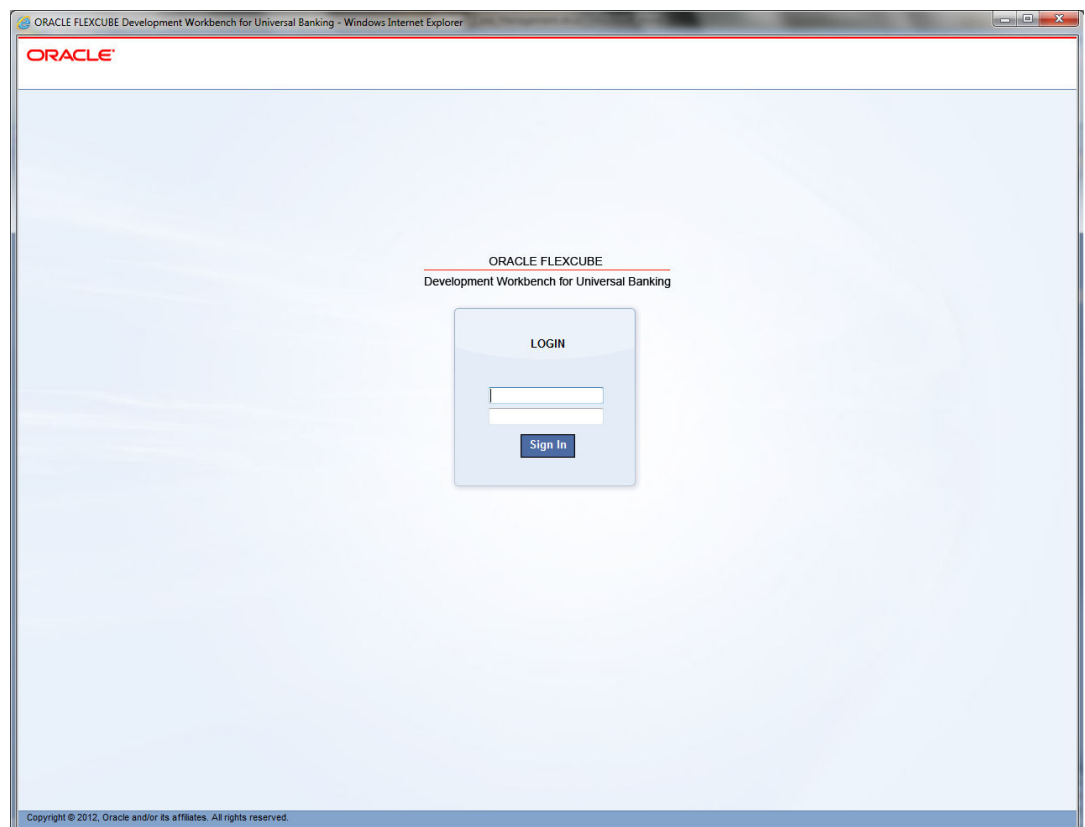
Each function is explained in the below steps.

1. Launch the Development Workbench application from the start menu.

Only the Release Admin has the rights to create new Users. Development Workbench Admin creates a new release and assign one user as a Release admin for that release.

The **Development Workbench Login** screen displays.

Figure 3-1 Login Screen

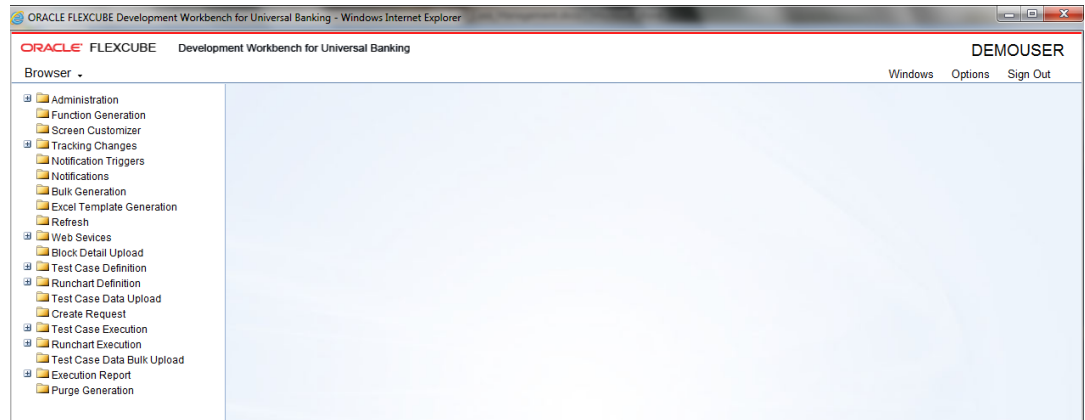


Note

User should make sure that the same User ID is created in FLEXCUBE.

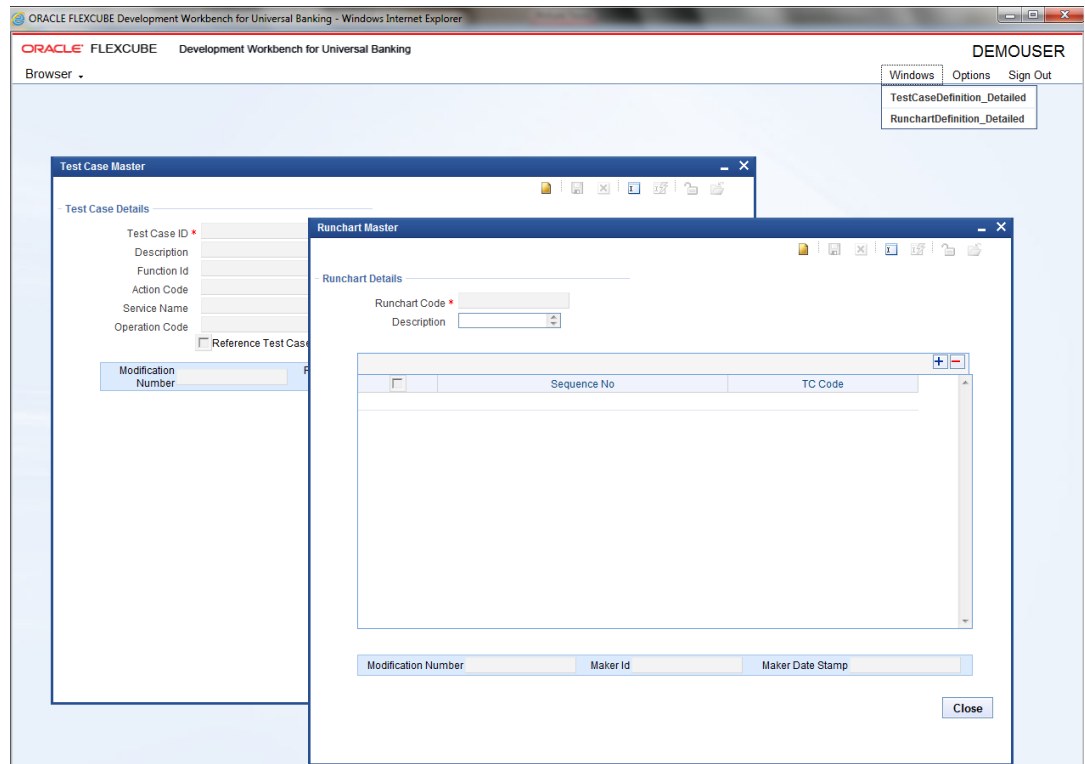
- Specify the **User ID**, **Password** and click on **Sign In**.
The **Development Workbench Homescreen** is display.

Figure 3-2 Homescreen



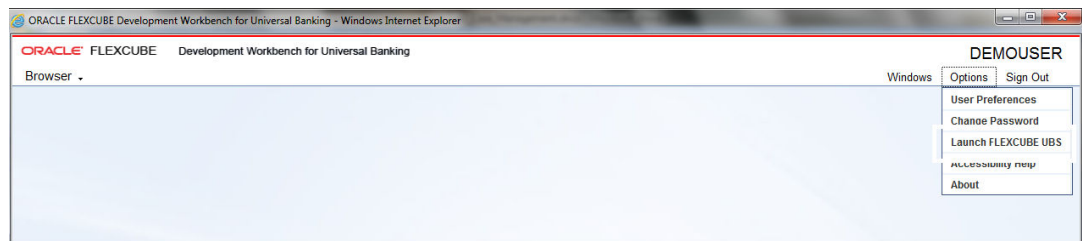
- On the **Homescreen**, to view the menu, click on **Browser**.
- To swap the open windows in the application on the **Homescreen**, click on **Windows**.
The **Windows** screens displays.

Figure 3-3 Windows



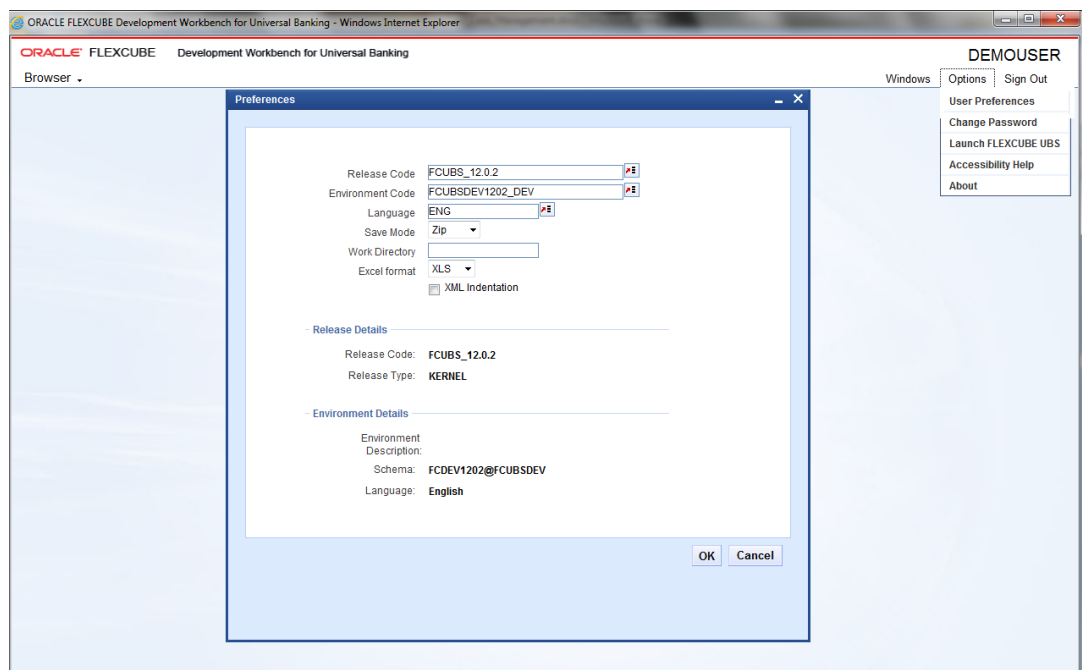
5. On the **Homescreen**, to view the available options, click on **Options**. The available options are:
 - a. User Preferences
 - b. Change Password
 - c. Launch FLEXCUBE UBS
 - d. Accessibility Help
 - e. About

Figure 3-4 Options



6. To launch the FCUBS application, click on **Launch FLEXCUBE UBS** under **Options**. The FCUBS link is given at the time of Release creation which can be modified at any release stage by the release Admin.
7. To launch the User Preferences, click on **User Preferences** under **Options**. The **Preferences** screen displays.

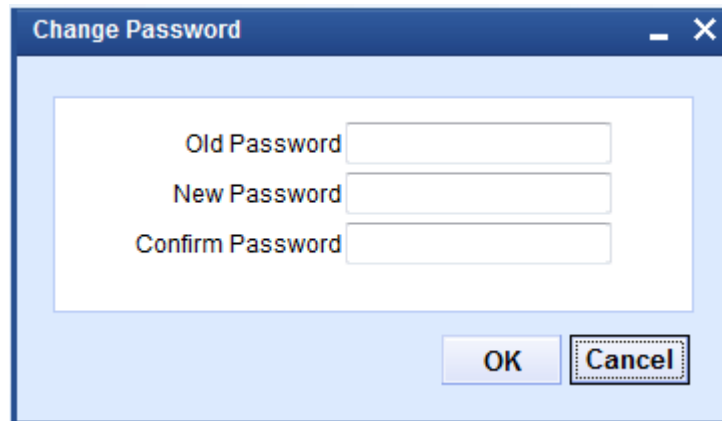
Figure 3-5 Preferences



8. The Preferences screen displays the current user release & schema details. To switch between releases and environments, click the **User Preferences** option.

9. Click **Choose** next to Release code and Environment code. The user can view the releases and the corresponding environments and map accordingly.
10. Click **OK**.
The **Preferences** screen is closed.
11. To change the password, click **Change Password** option under **Options**.
The **Change Password** pop-up window displays.

Figure 3-6 Change Password

A screenshot of a 'Change Password' dialog box. The dialog has a title bar with the text 'Change Password' and standard window controls (minimize, maximize, close). Inside the dialog, there is a white rectangular area containing three text input fields. The first field is labeled 'Old Password', the second 'New Password', and the third 'Confirm Password'. Below these fields, there are two buttons: 'OK' and 'Cancel'. The 'Cancel' button is highlighted with a dashed border.

12. On the **Change Password** pop-up window, specify the fields.
For more information on fields, refer to the field description table.

Table 3-1 Change Password

Field	Description
Old Password	Specify the existing password.
New Password	Specify the New Password.
Confirm Password	Re-enter the New Password.

13. Click **OK**.
The **Password** is changed.
14. To Sign Out of TCM, click on **Sign Out**.
The **Login** page displays.

4

Block Detail Upload

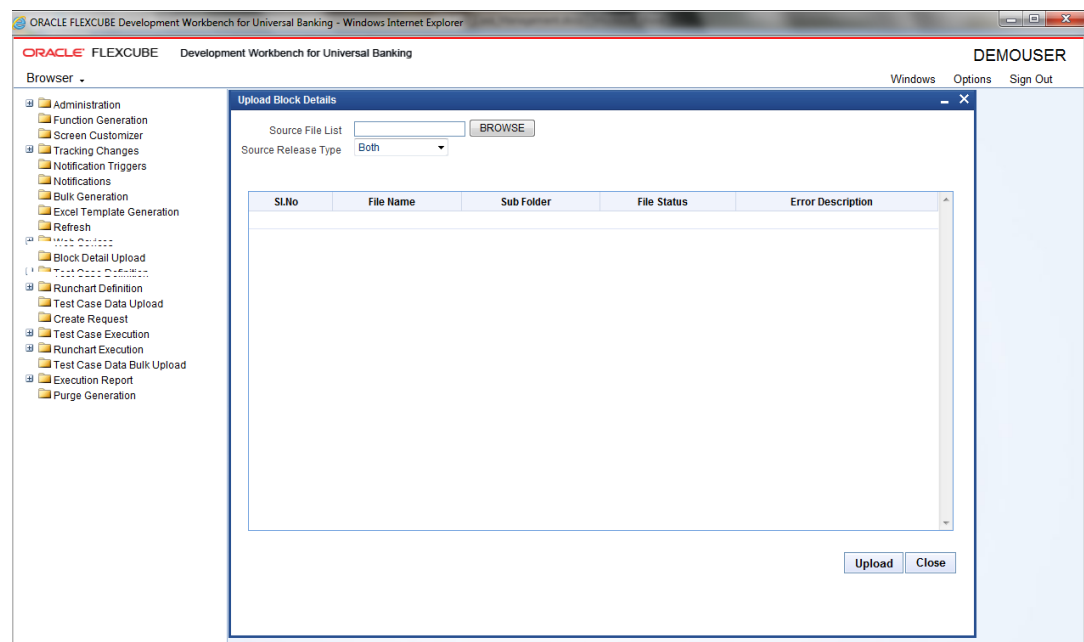
This topic explains the systematic instructions to upload block details. This screen helps users extract the details from the function Ids _RAD.xml files.

the Upload Block Details screen helps users extract the details from the function Ids _RAD.xml files.

1. On the **Homescreen** under the **Browser**, click on **Block Detail Upload**.

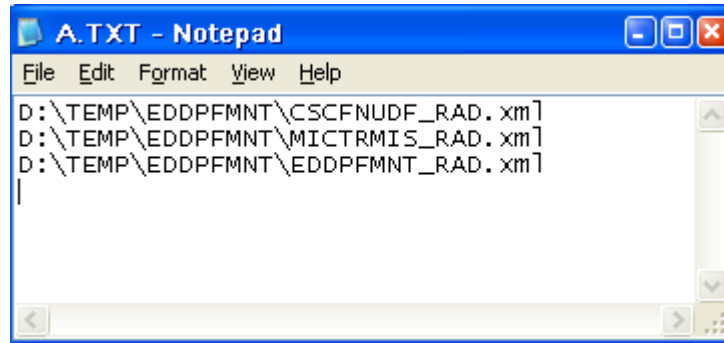
The **Upload Block Details** screen is displayed.

Figure 4-1 Upload Block Details



2. On the **Upload Block Details** screen, to upload the **Source File List**, click on **Browse**.
3. Select the text file and click **Open**.

The text file contains a list of RAD XML's that must be extracted and prepared along with its call forms. The text file contains the location of the RAD XML.

Figure 4-2 Text File

4. Specify the **Source Release Type** as Both from the drop-down list.
5. Click **Upload**.

Note

To generate a text file that contains a list of RADXML files, the user has to follow these steps:

- Command Prompt > Specific folder where RADXMLS are stored >
- DIR /B /S >Files.txt

Note

Block detail information needs to be re-generated every time there is a change in the source.

The Call form has to be placed above the main function id in the source file list
Bulk Details are uploaded.

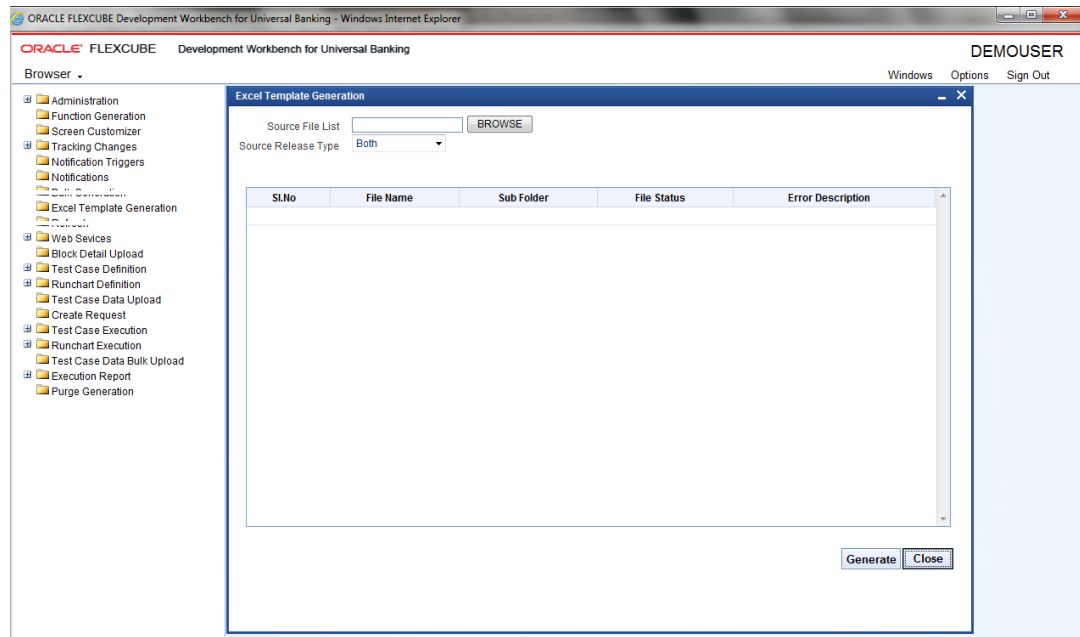
5

Excel Template Generation

This topic explains systematic instructions to generate Excel Template.

1. On the **Homescreen** under the **Browser**, click on **Excel template Generation**.
The **Excel template Generation** screen is displayed.

Figure 5-1 Excel Template Generation



2. On the **Excel Template Generation** screen, to upload the **Source File List**, click **Browse**.
3. Select the text file and click **Open**.
4. Specify the **Source Release Type** as Both from the drop-down list.
5. Click **Generate**.

Note

The Excel template needs to be re-generated every time there is a change in the source after uploading the new block details.

6

Test Case Definition

This topic explains the systematic instructions to define the test case.

1. On the **Home Screen**, under **Browser**, expand **Test Case Definition** and click on **Detailed**.

Test Case Master screen is displayed.

Figure 6-1 Test Case Master

ORACLE FLEXCUBE Development Workbench for Universal Banking

Browser - Windows Options Sign Out

DEMOUSER

Test Case Master

Test Case Details

Test Case ID *
Description
Function Id
Action Code
Service Name
Operation Code

☐ Reference Test Case

Modification Number Record Status Open Maker Id Maker Date Stamp

Close

2. On the **Test Case Master** screen, to create new test case click the first command.

Test Case Master screen is displayed.

Figure 6-2 New Test Case

Test Case Master

- Test Case Details

Test Case ID * TC_CYDCRTYP_NEW

Description Current Rate Type

Function Id CYDCRTYP

Action Code NEW

Service Name FCUBSCcyService

Operation Code

☐ Reference Test Case

Modification Number 2

Record Status Open

Maker Id DEMO

Maker Date Stamp 2013-02-28 20:26:39

Close

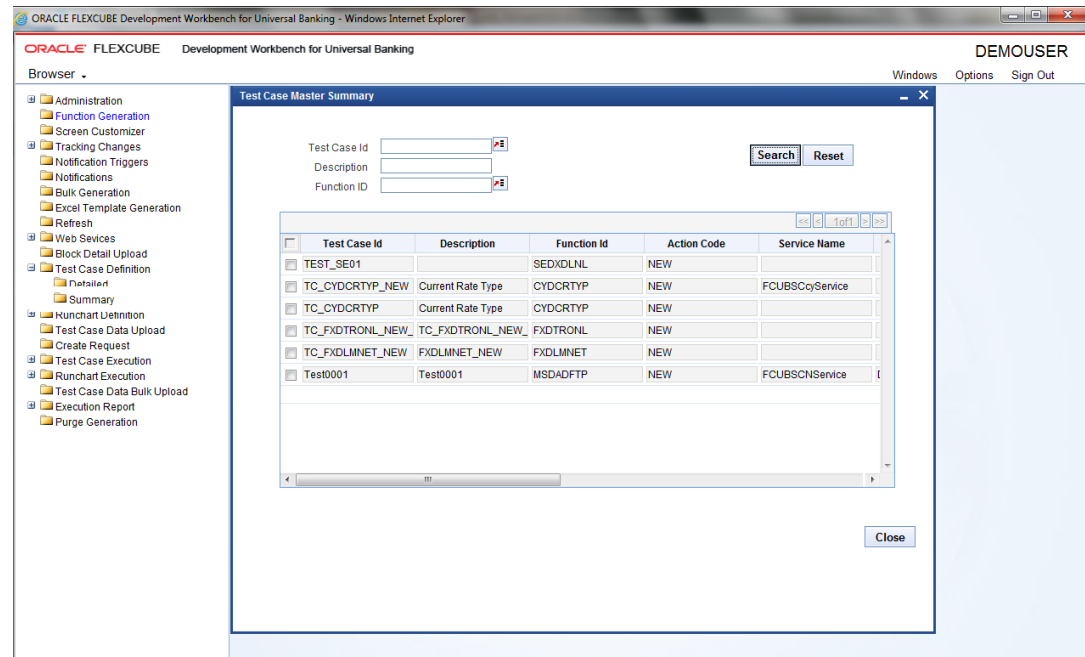
3. Click on **Save**, to save the test case details.
4. To query the data, click on the fourth command (**add icon**)
5. To get the queried data, click on the fifth command. (**add icon**)

Note

Function Id and Action code combination is used to take care of FCUBS requests, while Service Name and Operation Code is used to take care of Web Services requests.

6. Click on **Close** button.
Test Case Master screen is closed.
7. On the **Home Screen**, under **Browser**, expand **Test Case Definition** and click on **Summary**.
Test Case Master Summary screen is displayed.

Figure 6-3 Test Case Master Summary



8. On the **Test Case Master Summary** screen, by default the system displays the available test cases.
9. To search for a specific test case, specify the fields on the **Test Case Master Summary** screen.

For more information on fields, refer to the field description table.

Table 6-1 Test Case Master Summary

Field	Description
Test Case Id	Specify the Test Case Id or click the choose option. The system displays the available Test Case ID's in the system.
Description	Specify the description.
Function ID	Specify the Function ID or click the choose option. The system displays the available Function ID's in the system.

10. After specifying any of the fields, click **Search** to view the test case.

7

Test Case Upload

This topic explains the systematic instructions to upload the excel template along with data.

1. On **Homescreen**, under **Browser**, click on **Test Case Data Upload**.

The **Test Case Upload** screen displays.

Figure 7-1 Test Case Upload

2. On the **Test Case Upload** screen, click the choose button (add icon) and select the **Test Case ID**.
3. By default, the system displays the following fields.
 - a. **Description**
 - b. **Function ID**
 - c. **Branch Code**
 - d. **Action Code**
 - e. **Service Name**
 - f. **Original Release**
 - g. **Operation Code (If applicable)**
4. Click on **Upload Excel** button, to upload the excel template.

Figure 7-2 TCM Excel Sheet

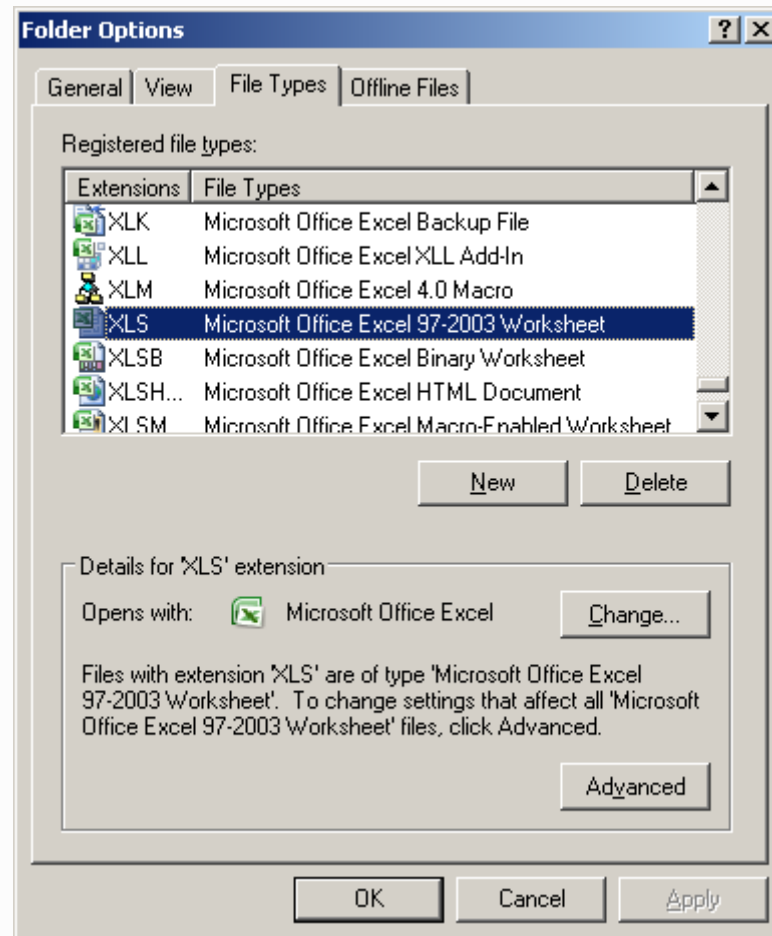
	A	B	E	F	G	H	I
1	1.CYTMS_RATE_TYPE	Field Name	Field Value 1	Field Value 2	Field Value 3	Field Value 4	Field Value 5
2		Record No	1	2	3	4	5
3		Record Id	1	2	3	4	5
4		Action Code	NEW	NEW	NEW	NEW	NEW
5		Parent Record Id	1	2	3	4	5
6		CCY_RATE_TYPE	STANDARD	CASH	BILLS	TC	DD
7		CCY_RATE_TYPE_DESC	STANDARD RATE	Cash Transaction	BILLS RATE	TC RATE	DD RATE
8							
9	2.UDTBS_FUNC_UDF_UPLOAD_DETAIL	Field Name	Field Value 1	Field Value 2	Field Value 3	Field Value 4	Field Value 5
10		Record No	1	2	3	4	5
11		Record Id	1	2	3	4	5
12		Action Code	NEW	NEW	NEW	NEW	NEW
13		Parent Record Id	1	2	3	4	5
14		FUNCTION_ID					
15		REC_KEY					
16		FIELD_NAME					
17		FIELD_VAL					
18		DATA_TYPE					
19		VAL_TYPE					
20							
21							
22							
23							
24							
25							
26							
27							
28							
29							
30							
31							

5. While uploading the excel sheet, refer the below points.
 - a. The Parent Record Id in the Master Data block's sheet should be null.
 - b. The Parent Record Id in Non-Master Blocks should not be null.
 - c. All data needs to be input into the sheet as String only. I.e., for Date and Number fields, they need to be input with an apostrophe before the value. E.g. 2010/02/02 or 9087 etc
 - d. Excel sheet should be 2003 version (File extension name should be .xls)

Note

For proper display of excel sheet in the browser, user needs to ensure the following In Windows explorer **Folder Options**, then click **File Types**.

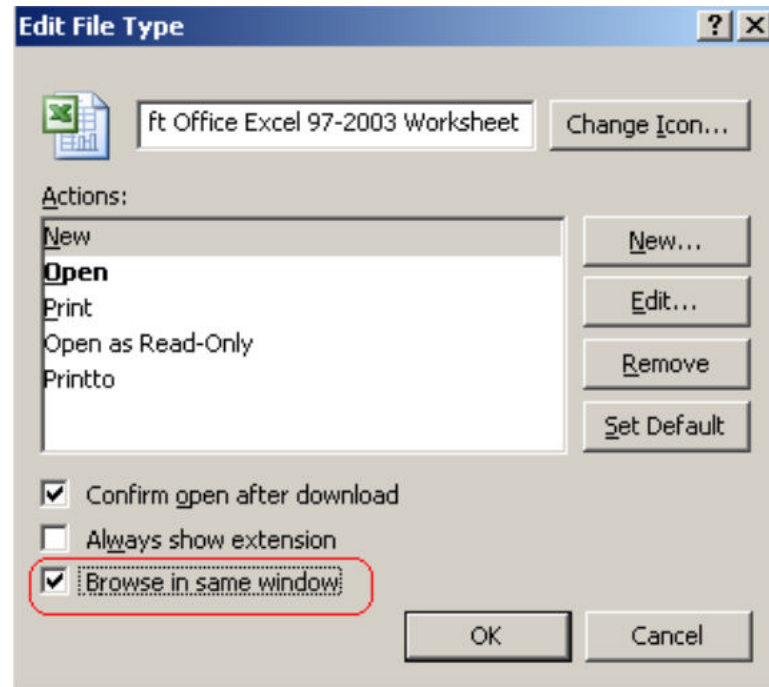
Figure 7-3 Folder Options



- e. To browse in same window, select the extension, click on **Advanced** and select the **Browse In same window** checkbox.

Edit File Type window is displayed.

Figure 7-4 Edit File Type



- f. Click **OK**.

Edit File Type window is closed.

- g. Click **OK** on the **Folder Options** window.

6. On the **Test Case Upload** screen, to save the test case upload details, click on **Save**.
(Add icon)

If multiple columns are there in the Excel sheet, TCM will create multiple Test Cases.

TEST CASE: COUNTRY_CODES

If the user uploads data with two columns for INDIA & USA, The system creates two test cases as:

- **COUNTRY_CODES_01** (this TC to create country - INDIA)
- **COUNTRY_CODES-02** (this TC to create country - USA)

8

Test Case Execution

This topic explains the systematic instructions to execute the uploaded Test Case.

1. On the **Home Screen**, under **Browser**, expand **Test Case Execution** and click on **Detailed**.

Test Case Execution screen is displayed.

Figure 8-1 Test Case Execution

2. On the **Test Case Execution** screen, specify the fields.

For more information on fields, refer to the field description table.

Table 8-1 Test Case Execution

Field	Description
Exec Ref No	Enter the Exec reference number.
Test Case ID	Each execution generates a unique reference number, which is used later for viewing the status of the execution.
Description	Displays the Test Case ID description.
Source Type	Select the source type from the drop-down. It can be FLEXCUBE or Web Services, depending on whether the execution is done from FLEXCUBE or an external System.
Action on override	Users can select the applicable value from the drop-down. If overrides occur for a function id, the user can ignore those overrides or stop the execution and give an Error status.

Table 8-1 (Cont.) Test Case Execution

Field	Description
Auto Authorization	On selecting this check box, the executed records will be authorized records.
Execution Status	Displays if the record is executed successfully or not.

9

Run Chart Master

This topic explains the systematic instructions to add multiple test cases and make a single Run Chart to execute at

1. On the **Home Screen**, under **Browser**, expand **Runchart Definition** and click on **Detailed**.

Runchart Master screen is displayed.

Figure 9-1 Runchart Master

2. On the **Runchart Master** screen, specify the fields
For more information on fields, refer to the field description table.

Table 9-1 Runchart Master

Field	Description
Runchart Code	Displays the Runchart Code .
Description	Displays the description.
Sequence No	Enter the Sequence number and its mandatory In this screen user can add multiple test cases and make a single Run Chart to execute at one shot.

3. Click **Summary** in the left menu under **Runchart Definition**.

The **Runchart Master Summary** screen is displayed.

Figure 9-2 Runchart Master Summary

	Runchart Id	Description
<input type="checkbox"/>	RC_NEW	RC_NEW FCUBS_1:
<input type="checkbox"/>	RC_NEW1	RC_NEW1 FCUBS_1:

4. Click **Runchart Execution** in the left menu and click **Detailed** under **Runchart Execution**. User can execute the Run Chart in this screen. If user doesn't want execute with auto auth, user can uncheck the check box.

Once Run Chart is executed user can see the status in the screen itself. Request: User can check request which has been received by TCM Response: User can check the TCM response for the request on clicking this command button. In this screen user can find the status of the execution of individual test case and the reason for failure.

Note

User can generate around 20 test-cases at a time.

The **Runchart Execution** is displayed.

Figure 9-3 Runchart Execution

ORACLE FLEXCUBE Development Workbench for Universal Banking - Windows Internet Explorer

ORACLE FLEXCUBE Development Workbench for Universal Banking

DEMOUSER

Windows Options Sign Out

Browser

Administration

- Function Generation
- Screen Customizer

Tracking Changes

- Notification Triggers
- Notifications
- Bulk Generation
- Excel Template Generation
- Refresh

Web Services

- Block Detail Upload
- Test Case Definition

Runchart Definition

- Detailed
- Summary

Test Case Data Upload

- Create Request
- Test Case Execution

Runchart Execution

- Detailed
- Summary

Test Case Data Bulk Upload

Execution Report

- Purge Generation

Runchart Execution

Runchart Execution Details

Execution Reference Number *

Execution Status

Execution Time

Runchart Code *

Description

Start From Sequence Number

Halt On Error

Sequence No	Execution Reference Number	TC Code	Source Type	Message Exchange Pattern	Action On Override	Auto Authorize	Status	Req
-------------	----------------------------	---------	-------------	--------------------------	--------------------	----------------	--------	-----

Close

5. Click **Summary** under **Runchart Execution**.

The **Runchart Execution Summary** screen is displayed.

Figure 9-4 Runchart Execution Summary

Runchart Execution Summary

Exec Ref No

Rc Code

Search Reset

Exec Ref No	Rc Code
RCEX13063000000000	RC_NEW1

Close

10

Derivation

The topic provides information about derivation.

When the input for a test case depends on the output of another test case, the application facilitates using derivation to link the input to the output of another test case.

D:TESTCASENAME:BLOCKNAME:FIELDNAME

Example : D:TC_FXDTRONL_NEW_CONTRACT_FSC2:BLK_CONTRACT_MASTER:CONTREFNNO

Migration of Data using TCM Tool

This topic explains the systematic instructions to migrate data using the TCM tool.

To achieve the migration of data from Release1 to Release2 refer to the below steps:

1. Export the data using the export to excel functionality in FCUBS.
2. Create test cases in TCM (having Release1 sources) for the function id and upload the excel sheet.
3. Create Run Chart if required to sequence the execution of the Test Cases.
4. Upload the new RADXMLs of Release 2 using the Block Detail Upload functionality.
5. Modify the test cases where there are changes in the field definition. During modification, the excel sheet would show the new fields with blank values. The TCM tool also provides a facility to modify specific records/test cases only.
6. Run the test case/run chart as appropriate. On execution, the modified data gets updated in the database.

To migrate the data between releases is subjected to the following conditions:

- a. If a screen is non -extensible in Release 1 and gets converted to an extensible screen in Release 2, then migration of data from Release 1 to Release2 is not possible through the TCM tool.
- b. If a non-extensible screen in Release 1 remains non-extensible in Release2, then data migration through TCM Tool is possible.
- c. If an extensible screen in Release 1 remains extensible in Release2, then migration of data through TCM Tool is possible.

Note

If multiple releases are to be created in a single TCM schema, then the data from the base release can be migrated to the child release during the creation of the release.