

Oracle® FLEXCUBE Investor Servicing Glossary User Guide



Release 14.7.6.0.0
G30489-01
April 2025

ORACLE®

Copyright © 2007, 2025, Oracle and/or its affiliates.

This software and related documentation are provided under a license agreement containing restrictions on use and disclosure and are protected by intellectual property laws. Except as expressly permitted in your license agreement or allowed by law, you may not use, copy, reproduce, translate, broadcast, modify, license, transmit, distribute, exhibit, perform, publish, or display any part, in any form, or by any means. Reverse engineering, disassembly, or decompilation of this software, unless required by law for interoperability, is prohibited.

The information contained herein is subject to change without notice and is not warranted to be error-free. If you find any errors, please report them to us in writing.

If this is software, software documentation, data (as defined in the Federal Acquisition Regulation), or related documentation that is delivered to the U.S. Government or anyone licensing it on behalf of the U.S. Government, then the following notice is applicable:

U.S. GOVERNMENT END USERS: Oracle programs (including any operating system, integrated software, any programs embedded, installed, or activated on delivered hardware, and modifications of such programs) and Oracle computer documentation or other Oracle data delivered to or accessed by U.S. Government end users are "commercial computer software," "commercial computer software documentation," or "limited rights data" pursuant to the applicable Federal Acquisition Regulation and agency-specific supplemental regulations. As such, the use, reproduction, duplication, release, display, disclosure, modification, preparation of derivative works, and/or adaptation of i) Oracle programs (including any operating system, integrated software, any programs embedded, installed, or activated on delivered hardware, and modifications of such programs), ii) Oracle computer documentation and/or iii) other Oracle data, is subject to the rights and limitations specified in the license contained in the applicable contract. The terms governing the U.S. Government's use of Oracle cloud services are defined by the applicable contract for such services. No other rights are granted to the U.S. Government.

This software or hardware is developed for general use in a variety of information management applications. It is not developed or intended for use in any inherently dangerous applications, including applications that may create a risk of personal injury. If you use this software or hardware in dangerous applications, then you shall be responsible to take all appropriate fail-safe, backup, redundancy, and other measures to ensure its safe use. Oracle Corporation and its affiliates disclaim any liability for any damages caused by use of this software or hardware in dangerous applications.

Oracle®, Java, MySQL, and NetSuite are registered trademarks of Oracle and/or its affiliates. Other names may be trademarks of their respective owners.

Intel and Intel Inside are trademarks or registered trademarks of Intel Corporation. All SPARC trademarks are used under license and are trademarks or registered trademarks of SPARC International, Inc. AMD, Epyc, and the AMD logo are trademarks or registered trademarks of Advanced Micro Devices. UNIX is a registered trademark of The Open Group.

This software or hardware and documentation may provide access to or information about content, products, and services from third parties. Oracle Corporation and its affiliates are not responsible for and expressly disclaim all warranties of any kind with respect to third-party content, products, and services unless otherwise set forth in an applicable agreement between you and Oracle. Oracle Corporation and its affiliates will not be responsible for any loss, costs, or damages incurred due to your access to or use of third-party content, products, or services, except as set forth in an applicable agreement between you and Oracle.

Contents

1	<u>Glossary of Oracle FLEXCUBE Investor Servicing</u>
---	---

Preface

Oracle FLEXCUBE Investor Servicing is a comprehensive mutual funds automation software from Oracle® Financial Servicing Software Ltd.©.

You can use the system to achieve optimum automation of all your mutual fund investor servicing processes, as it provides guidelines for specific tasks, descriptions of various features and processes, and general information.

This topic contains the following sub-topics:

- [Purpose](#)
- [Audience](#)
- [Documentation Accessibility](#)
- [Critical Patches](#)
- [Diversity and Inclusion](#)
- [Conventions](#)
- [Acronyms and Abbreviations](#)

Purpose

You are intended to become familiar with the **Oracle Flexcube Investor Servicing** application through this guide. This guide offers responses to particular features and procedures that are necessary for the module to operate effectively.

Audience

This user guide is intended for the Fund Administrator users and System operators in the AMC.

Documentation Accessibility

For information about Oracle's commitment to accessibility, visit the Oracle Accessibility Program website at <http://www.oracle.com/pls/topic/lookup?ctx=acc&id=docacc>.

Access to Oracle Support

Oracle customers that have purchased support have access to electronic support through My Oracle Support. For information, visit <http://www.oracle.com/pls/topic/lookup?ctx=acc&id=info> or visit <http://www.oracle.com/pls/topic/lookup?ctx=acc&id=trs> if you are hearing impaired.

Critical Patches

Oracle advises customers to get all their security vulnerability information from the Oracle Critical Patch Update Advisory, which is available at [Critical Patches, Security Alerts and Bulletins](#). All critical patches should be applied in a timely manner to ensure effective security, as strongly recommended by [Oracle Software Security Assurance](#).

Diversity and Inclusion

Oracle is fully committed to diversity and inclusion. Oracle respects and values having a diverse workforce that increases thought leadership and innovation. As part of our initiative to build a more inclusive culture that positively impacts our employees, customers, and partners, we are working to remove insensitive terms from our products and documentation. We are also mindful of the necessity to maintain compatibility with our customers' existing technologies and the need to ensure continuity of service as Oracle's offerings and industry standards evolve. Because of these technical constraints, our effort to remove insensitive terms is ongoing and will take time and external cooperation.

Conventions

The following text conventions are used in this document:

Convention	Meaning
boldface	Boldface type indicates graphical user interface elements associated with an action, or terms defined in text or the glossary.
<i>italic</i>	Italic type indicates book titles, emphasis, or placeholder variables for which you supply particular values.
<code>monospace</code>	Monospace type indicates commands within a paragraph, URLs, code in examples, text that appears on the screen, or text that you enter.

Acronyms and Abbreviations

The list of the acronyms and abbreviations used are as follows:

Table Acronyms and Abbreviations

Abbreviation	Description
CIF	Customer Information File
EOD	End of Day
EPU	Earnings per unit
FCIS	Oracle FLEXCUBE Investor Servicing
FMG	The Fund Manager component of the system
FPADMIN	Oracle FLEXCUBE Administrator
GTA	Global Transfer Agency
ID	Identification
IHPP	Inflation Hedged Pension Plan
IPO	Initial Public Offering
LEP	Life and Endowment Products
LOI	Letter of Intent
NAV	Net Asset Value
REG	The Registrar component of the system
ROA	Rights of Accumulation
ROI	Return on Investment

Table (Cont.) Acronyms and Abbreviations

Abbreviation	Description
SI	Standing Instructions
SMS	Security Management System
URL	Uniform Resource Locator
VAT	Value Added Tax
WAUC	Weighted Average Unit Cost

1

Glossary of Oracle FLEXCUBE Investor Servicing

This topic lists Glossary of **Oracle FLEXCUBE Investor Servicing** Terms.

Refer to the table for Glossary of **Oracle FLEXCUBE Investor Servicing** Terms.

Table 1-1 Terms and Definitions

Terms	Definitions
Account Closure	Carried out after the unit holder wishes to close his account with the fund. A unit holder account would be considered closed only after all the units held by a unit holder in the fund are redeemed, current block transactions are unblocked and any uncleared checks are cleared and given effect to. Until such time that these processes are completed, the account would be treated as Pending Closure .
Agency Branches	The branch which caters to the needs of the unit holders on the basis of the geographical areas earmarked for their activities .The agency branch helps the fund managers to generate more business for the fund besides acting as a contact point for unit holders who need not always approach the AMC directly for information required by them or for transactions.
Agent	The organization / entity entrusted with dealing directly with unit holders, a function performed in turn by its Agency Branches.
Aging	The process of keeping track of the age of a transaction from the date of its entry till the date of its being cleared in full from the account of a unit holder. Two types of aging are supported within the system: <ul style="list-style-type: none"> • FIFO • Transaction Receipts
Allocation on par with cash	Allocation on par with cash is maintained in Fund Rules, General Operating Rules. The fund manager has the option of waiting for payments made through modes other than cash to be cleared before effecting allocation. Conversely, the fund manager may opt to provisionally allot the units on receipt of the application, pending clearance of the payment in the case of check, credit card and transfers. This option of provisional allotment pending clearing can be enabled using the allocation on par with cash option. It follows that when allocation on par with cash is defined as No , the units will be allocated only after the payment is cleared, manually or through automatic clearing.
Allocation	The process of creation/ liquidation of units after a transaction net of all loads is referred to as allocation.

Table 1-1 (Cont.) Terms and Definitions

Terms	Definitions
Amendment	<p>Transactions may be amended at the agency branch level on the request of the unit holder to give effect to corrections pertaining to specific transactions. Fund rules can also be amended at the fund manager level on the basis of a decision made by the trustees or the board of directors.</p> <p>Presently any transaction can be amended as many times as required while in the case of fund rule amendment the fund manager has an option to amend it to the funds necessity. Presently in the system any transactions can be amended as many times as required.</p>
Authorization	<p>Every time data pertaining to fund rules or transactions is entered in the system, it has to be authorized so as to give effect to it. An authorization is therefore the process of verification of the data entered as also sanctioning the same.</p> <p>Presently the system supports authorization for the key processes like Funds, Fund Rule, Unit holders, Brokers, Transaction Amendment, Transaction Processing Rules etc.,</p>
Automatic clearing	<p>While the agency branch initiating a transaction can manually clear / reject a check / demand draft / credit card / transfer transaction on the basis of the advice from the drawee bank, it is also possible for the fund manager to define a maximum period beyond which all payments which are pending clearing are cleared by the system, and allocation of the same carried out. This concept of payment status being system cleared is referred to as Automatic Clearing.</p>
Block	<p>When a unit holder pledges units in favor of a corporate, person or institution, a lien is required to be marked on these units in favor of the recipient of the pledge. This is called a block and the unit holder cannot redeem, transfer or switch these units until the block is lifted through an unblock.</p>
Board of Directors Meeting	<p>A meeting held to declare the results of the funds and the future strategies of the fund with respect to investments, profit sharing with unit holders. Dividend and book closing dates are announced and fund rules are amended if required with the directors approving such amendments.</p>
BOD	<p>Also known as beginning of the next working day. The system would be online again after the completion of BOD and the agency branches can do transaction entry.</p>
Book Closing	<p>Having defined a freeze holdings date, the fund may also specify a date or a pair of dates during which no new units would be issued to unit holders in the funds or like wise transferred to new unit holders effectively resulting in the register of unit holders being closed for the period specified. This action of a fund is referred to as book closing and the period is the difference between the book closing from and to date(s). The unit holders whose names appear in the Registrars list on the book closing from date are eligible for dividends if announced.</p>
Broker	<p>An individual or a corporate entrusted with the role of marketing the products offered by the fund. At present multiple level hierarchies could be supported in the system.</p>
Ceiling Value (Loads)	<p>Maximum value for a load which the fund manager may expect to pay or receive. The system would recognize both floor and ceiling values for a transaction.</p>

Table 1-1 (Cont.) Terms and Definitions

Terms	Definitions
Check allocation On clearing date	In cases where the fund is defined as having check allocation. on clearing date, the transaction is allocated on the basis of the price prevailing on the date of clearing of the check.
Clearing	Unit holders can pay for IPO subscriptions, subscriptions through cash, check, demand draft, credit card and transfer from their bank account. With exception of cash transactions, all the others have to be presented to the drawee bank and credit received by the fund. This process of presentation and receiving credit through bank is referred to as clearing. A related concept is that of allocation on par with cash.
Confirmation	A process carried out by the fund manager to ratify redemption transactions and is mandatory for check printing in respect of redemption transactions to be enabled.
Consolidation	In a situation where the unit holder requests for units issued under separate certificates to be combined as certificates having a greater denomination, a consolidation transaction is put through and units generated in the unit holder defined denominations. Mainly corporate and FII investors are interested in these type of certificates where the denomination of the certificates are usually high. In other words these are known as Jumbo Certificates . This function is supported in a scrip-based fund.
Corporate Actions	<p>The Corporate Actions screen can be used by the AMC to define the rules for corporate actions processing for the fund. For the corporate action dividend, you can define the frequency of payoffs; price declaration as also other payment related areas such as lead times and processing frequencies for statements, for both cash and stock dividends.</p> <p>For a fund, a separate corporate action profile can be maintained for each dividend type, stock and cash.</p>
Custodian	An entity which stores and keeps track of the physical securities pertaining to the fund, and applicable primarily in a scrip based scenario.
Declared NAV	<p>A fund may opt to declare a price at a pre-defined frequency. This price is a function of the trading profits and losses of the fund and is arrived at based on the policies defined by the fund in advance. This net figure which the fund may publicly announce is referred to as the declared NAV and is reckoned for the purposes of arriving at loads, payoffs etc. subject to the floor and cap applicable for the same.</p> <p>Typically, in a user scenario, the declared NAV is determined by the fund manager through the use of an investment management tool, such as Oracle FLEXCUBE Investor Servicing - Asset Management or any other external mechanism from where the price is received and entered either manually or through a specifically designed interface.</p>
Dividend	A portion of profits that are divided among the unit holders according to their respective holdings at a pre-defined frequency.
Entity	An individual, corporate or institution with which a fund interacts in the course of its daily activities. At present the following entities are recognized in the system: unit holders, asset management companies (AMCs), registrars, brokers, agents, agency branches, trustees.

Table 1-1 (Cont.) Terms and Definitions

Terms	Definitions
EoD	The procedures that are undertaken to close out a logical day and prepare the system for the next working day are collectively termed as EoD or End of Day Procedures. They are menu-driven or automatically processed.
Export - Import Processing	Offline branches need to forward data to the fund manager on a daily basis and then receive the same back after it is processed. Data is forwarded to the fund manager by offline branches through the export process and received through the import process. This exchange of data between the fund manager and the offline branches is referred to as export / import processing.
FIFO	In the case of a scrip-less fund, when the unit holder asks for any one of three transaction types (redemption, switch or transfer), and the aging for that fund is based on FIFO, the system would automatically put through the transaction taking into account the balances in earlier acquisition transactions, starting with the unit holder's oldest transaction in the fund and progressively going through to the last until the entire requirement of the transaction is met.
Floor Price	The minimum price offered by the AMC for the units in a fund. This would apply in the case of redemption payoffs, and in the computation of loads for a transaction by a unit holder in a fund.
Floor Value (Loads)	Minimum value for a load which the fund manager may expect to pay or receive.
Freeze Holdings	When dividends are declared by a fund, it would like to payoff these dividends to unit holders on the basis of their holdings as of a particular date. The holdings as of this date are eligible for the computation of dividend.
Information Change	Carried out whenever the unit holder wants to change information related to his address, telephone number, identification details, joint holders, etc.,
IPO	Initial public offering is done by the fund manager to garner subscriptions when a new fund is floated. This operation is typically a primary market operation that involves broker, agent and its agency branch that helps the fund manager to get maximum funds from the investors while starting the fund.
Lags	A lag can be defined as the lead time which would be applicable to a particular transaction in respect of: a) Price : When a price lag is defined for a transaction type, it means that the price applicable for the transaction would be the price declared on a date that is the transaction date minus the number of days of lag, b) Allocation : When an allocation lag is defined, the allocation of the transaction may take place only after the expiry of the number of days of lag, from the date of the transaction, c) Confirmation : For redemption transactions, a confirmation is required to enable printing of the payoff check. Such a confirmation for the transaction can only be done after the expiry of the number of days of lag.
Letter of Intent	A type of instruction given by a client to the fund manager to buy, sell, redeem at a particular date or rate specified by the unit holder. It is a commitment by the unit holder to invest a specified amount within a specified time period.

Table 1-1 (Cont.) Terms and Definitions

Terms	Definitions
Load to Price	In the event of a load being defined as a percentage of a transaction amount, the fund manager may prefer to let the effect of such a load reflect on the price applicable to the transaction. This practice of increasing or decreasing the price for a transaction is referred to as loading to price .
Loads	Fees charged from or incentives paid to the parties that the fund interacts with during the course of its daily operations. These may be defined as a percentage or as a straight amount depending on predefined slabs.
Name Change	Carried out when a unit holder wants to change his / her name as appearing in the list of members for that fund. The fund manager effects a name change only after authorization. It is also essential for the name change to be accepted by the Registrar to become effective.
NAV or Net Asset Value	<p>The price of the fund units is determined by this method. This calculation is appropriate for the open-ended funds because they are sold to the owners of the fund, and traded at net asset value. The formula of NAV is as follows:</p> <p>NAV = Value of the fund portfolio + funds cash awaiting investments- Expenses</p> <p>Number of Units Outstanding</p> <p>The higher the NAV, the stronger is the fund but for close ended funds the price is determined by the demand and supply factors in the secondary markets.</p>
Online & Offline branches	<p>Data in the system resides on the backend database that can be accessed by agency branches that are connected to it through leased lines or some other form of networking. Branches that are so connected to the server are referred to as online branches.</p> <p>On the other hand, there may be agency branches that are not connected to the backend database. These branches may have access to fewer services within the system. Also these branches will have to send data to the fund manager and receive the processed data from the fund manager on a daily basis, through export – import processing.</p>
Par Value	Whenever a fund makes an initial public offering, it would be required to specify the face value at which the units are being offered to prospective investors. This face value at which the units are being offered is referred to as the par value.
Post priced funds	The fund manager may opt for price declaration for a fund after taking into account the transactions for the day. This can only be done at close of a day's business hours, and such a fund would be referred to as a post-priced fund.
Pre-EOD	<p>Also known as Pre-End of Day Processing, at the fund manager is the first step in the closing of books for the day. Prior to taking up pre- EOD, the fund manager has to ensure that all the agency branches are signed off, fund prices are entered for the day for all the funds (as per pre-defined frequency).</p> <p>The system displays a list of activities that are classified as mandatory or optional and the user has to ensure that the same are completed before taking up pre-EOD processing at fund manager. This is followed by EOD.</p>

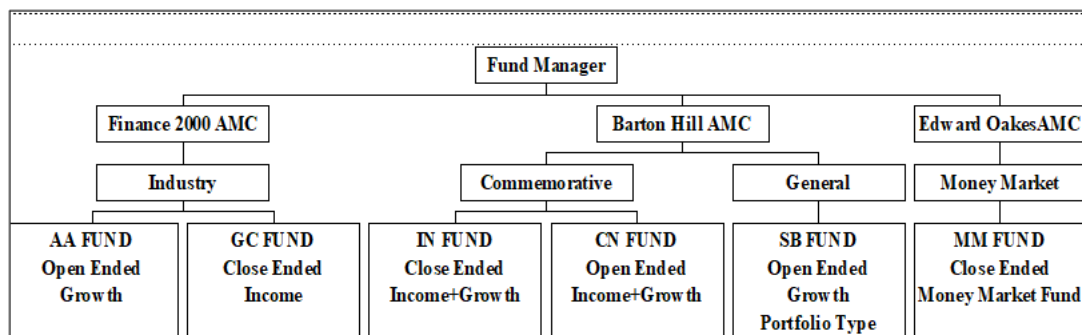
Table 1-1 (Cont.) Terms and Definitions

Terms	Definitions
Pre-priced funds	A pre-priced fund is one in which the last available price declared would be applicable for transactions which would be the price declared the day before the transaction date where price declaration frequency is daily. Note: The system presently requires that the frequency of price declaration for a post-priced fund necessarily be daily whereas a pre-priced fund can have daily, weekly, monthly, half-yearly, yearly frequencies of price declaration.
Redemption Transactions	An option given in the open-ended funds where the fund may buy back units from unit holders either on the closure of the fund or at predefined intervals. Rules of the redemption are fund specific. Redemption would result in reducing the outstanding units in the fund.
Registered Capital	The product of the total outstanding units in a fund by the price of issue.
Registrar	An entity which records all the unit holder related details including name and address, transactions, history of dealings with the AMC, besides performing the role of monitoring and collating IPO subscription and subscription details, and giving effect to redemption payoffs, switch transactions, transfers between unit holders, unit holder account closures etc. Also responsible for answering unit holder queries and redress of unit holder grievances.
Reinvestment	In addition to the returns earned by them on initial investment made, unit holders may also opt to increase their returns by putting their earnings back in the same fund or in other funds which would increase their holding in the fund where such returns are re-deployed. This process of re-deploying returns for earning incremental returns is referred to as reinvestment. Currently in the system reinvestment option is extended to the brokers and the unit holders.
Reissue	If a certificate is destroyed or misplaced, the fund manager can reissue the misplaced certificates as duplicates after a formal announcement. This is applicable to scrip based funds.
Rejection	Just as a transaction is authorized, it can also be rejected by the fund manager using the discretion provided in the prospectus, resulting in the transaction being disallowed.
Rule Effective date	This is one of the most frequently occurring terms in the system. Whenever a new rule is defined within the system, the user would be required to specify a rule effective date for the same; this would be accepted by the system and the new rule would become current from the rule effective date that the user defines. In other words, rule effective date is that date from which a new fund related rule defined would become current.
Scrip-based funds	Funds that issue certificates to unit holders for their holdings in a fund. Consequently, every transaction by a unit holder in a scrip-based fund involves certificates being exchanged.
Scrip-less funds	Funds that do not issue certificates to unit holders. The balances held by the unit holders in these funds are tracked either through passbooks or periodically generated account statements. Certificates can be printed in the case of scrip-less funds for block transactions of unit holders.

Table 1-1 (Cont.) Terms and Definitions

Terms	Definitions
Sign off	Sign off is a mandatory requirement for the fund manager to take up pre-EOD processing. By signing off a branch, the fund manager ensures that all the data pertaining to the agency branch has been accepted by the fund manager, while also ensuring that no further transaction entry can be done by the agency branches until completion of EOD processing.
Split	A reverse of a consolidation, whereby unit holder can reduce the certificate denominations.
Standing Instructions	Instead of having to repeat a transaction periodically, the unit holder may request the fund manager to put through the same on his behalf at pre-defined intervals. Such requests are referred to as Standing Instructions.
Subscriptions	Investments made by investors in a specified period falling outside the IPO period. In a close-ended fund subscriptions are limited to the required corpus of the fund.
Summary reports	As part of EOD processing every day, the system generates a report for each transaction type in each fund, giving the details of the loads applicable and applied for the transactions, the unit holder names, along with advices to the registrar, accounting section and the trustees regarding payoffs, credits, debits and transfers for the transactions. Such reports are referred to as Summary reports. There is also a separate menu option available to the fund manager for the generation of such reports.
Switch	An option where a unit holder could move investments from one fund to any other fund belonging to the same fund family. It should be noted that unit holders cannot switch from one fund family to another.
Transaction base price	In defining a fund, the fund manager may specify the transaction types that are available to the unit holders in the fund. At the same time, the fund may also specify the price that would be applicable to that transaction type. At present, the values supported for this would be Par Value, Declared NAV and RoI Value.
Transaction receipts	In the case of a scrip-less fund having aging based on transaction receipts, the unit holder can select the earlier transaction to which he would like the transaction aged, and the units allotted would be reduced from that particular transaction only.
Transfer	This process is normal in open and close-ended funds where the unit holder sells his holdings to another unit holder or to a new unit holder. The buyer gets the unit registered and the holding of the seller is reduced to the extent of the transfer.
Trustee	An individual or group of persons overseeing the activities of the AMC with to safeguard the interests of the Unit holder.
Unblock	When the unit holder gets the pledged units released, he is free to carry out all transactions pertaining to the units in that fund. This freeing of pledged units is referred to as Unblock.
Unit holder	An individual or a corporate that subscribes to the units of the fund, on the basis of the information provided by the brokers, by making an application to the agency branch attached to the fund.

The terms that follow are sought to be explained with the assistance of the following chart:

Figure 1-1 Fund Manager and Fund Types Chart

In the figure given above, the AMCs are defined as Finance 2000 AMC, Barton Hill AMC and Edward Oakes AMC:

Table 1-2 Terms and Definitions

Terms	Definitions
Fund Class	Funds floated by an AMC may be classified as Open ended or Close ended funds.
Open Ended Funds	An open ended fund makes an offering of its units to the public and has an option to buyback (redeem) its units from the unit holder who wishes to liquidate his holdings at a given point of time. Similarly, unit holders are allowed entry at any time during the life of the fund.
Close Ended Funds	A close-ended fund issues its units upto a pre-determined number through an initial public offering. Once the units are issued, they may be redeemed only upon the closure of the fund. Further, unit holders also have the option of switching their holdings, upon closure of the fund, to funds which are part of the same Fund Family.
Fund Family	Comprises of one or more funds, and permits inter-fund activity. Fund families are defined by the AMC and a given fund can only belong to one fund family. Industry, Commemorative, General and Money Market constitute the four fund families in the figure above. Unit holders in GCFund may switch their holdings to AAFund upon closure of GCFund. Similarly, unit holders in INFund may switch their units into CNFund on closure of their fund.
Fund Type	An AMC may define in advance the type of funds that it would float. In the figure above, three fund types are defined - Income, Growth and Incomecum- Growth.
Earnings Per Unit (EPU)	This is the income on a per unit basis from a fund which the Fund Manager proposes to distribute for eligible investors holding balances in the fund.
Bulk Import	The generic facility to import all transactions and client details into Oracle FLEXCUBE Investor Servicing . The transactions could be imported as authorized and unauthorized transactions where the unauthorized ones are put through normal authorizations.