

Oracle® FLEXCUBE Investor Servicing

Oracle FLEXCUBE Password Change



Release 14.7.7.0.0
G33226-01
April 2025

ORACLE®

Copyright © 2007, 2025, Oracle and/or its affiliates.

This software and related documentation are provided under a license agreement containing restrictions on use and disclosure and are protected by intellectual property laws. Except as expressly permitted in your license agreement or allowed by law, you may not use, copy, reproduce, translate, broadcast, modify, license, transmit, distribute, exhibit, perform, publish, or display any part, in any form, or by any means. Reverse engineering, disassembly, or decompilation of this software, unless required by law for interoperability, is prohibited.

The information contained herein is subject to change without notice and is not warranted to be error-free. If you find any errors, please report them to us in writing.

If this is software, software documentation, data (as defined in the Federal Acquisition Regulation), or related documentation that is delivered to the U.S. Government or anyone licensing it on behalf of the U.S. Government, then the following notice is applicable:

U.S. GOVERNMENT END USERS: Oracle programs (including any operating system, integrated software, any programs embedded, installed, or activated on delivered hardware, and modifications of such programs) and Oracle computer documentation or other Oracle data delivered to or accessed by U.S. Government end users are "commercial computer software," "commercial computer software documentation," or "limited rights data" pursuant to the applicable Federal Acquisition Regulation and agency-specific supplemental regulations. As such, the use, reproduction, duplication, release, display, disclosure, modification, preparation of derivative works, and/or adaptation of i) Oracle programs (including any operating system, integrated software, any programs embedded, installed, or activated on delivered hardware, and modifications of such programs), ii) Oracle computer documentation and/or iii) other Oracle data, is subject to the rights and limitations specified in the license contained in the applicable contract. The terms governing the U.S. Government's use of Oracle cloud services are defined by the applicable contract for such services. No other rights are granted to the U.S. Government.

This software or hardware is developed for general use in a variety of information management applications. It is not developed or intended for use in any inherently dangerous applications, including applications that may create a risk of personal injury. If you use this software or hardware in dangerous applications, then you shall be responsible to take all appropriate fail-safe, backup, redundancy, and other measures to ensure its safe use. Oracle Corporation and its affiliates disclaim any liability for any damages caused by use of this software or hardware in dangerous applications.

Oracle®, Java, MySQL, and NetSuite are registered trademarks of Oracle and/or its affiliates. Other names may be trademarks of their respective owners.

Intel and Intel Inside are trademarks or registered trademarks of Intel Corporation. All SPARC trademarks are used under license and are trademarks or registered trademarks of SPARC International, Inc. AMD, Epyc, and the AMD logo are trademarks or registered trademarks of Advanced Micro Devices. UNIX is a registered trademark of The Open Group.

This software or hardware and documentation may provide access to or information about content, products, and services from third parties. Oracle Corporation and its affiliates are not responsible for and expressly disclaim all warranties of any kind with respect to third-party content, products, and services unless otherwise set forth in an applicable agreement between you and Oracle. Oracle Corporation and its affiliates will not be responsible for any loss, costs, or damages incurred due to your access to or use of third-party content, products, or services, except as set forth in an applicable agreement between you and Oracle.

Contents

Preface

Purpose	iv
Audience	iv
Documentation Accessibility	iv
Critical Patches	v
Diversity and Inclusion	v
Conventions	v
Screenshot Disclaimer	v
Acronyms and Abbreviations	v

1 Change Oracle FLEXCUBE Password

2 Change Passwords in Oracle WebLogic

2.1	Prerequisites for Changing Password in Oracle WebLogic	2-1
2.2	Change Host Schema Password	2-1
2.3	Change Scheduler Data Source Password	2-5
2.4	Change Gateway Data Source Password	2-8

Preface

Oracle FLEXCUBE Investor Servicing is a comprehensive mutual funds automation software from Oracle® Financial Servicing Software Ltd.©.

You can use the system to achieve optimum automation of all your mutual fund investor servicing processes, as it provides guidelines for specific tasks, descriptions of various features and processes, and general information.

This topic contains the following sub-topics:

- [Purpose](#)
- [Audience](#)
- [Documentation Accessibility](#)
- [Critical Patches](#)
- [Diversity and Inclusion](#)
- [Conventions](#)
- [Screenshot Disclaimer](#)
- [Acronyms and Abbreviations](#)

Purpose

This manual is designed to help acquaint you with the installation of **Oracle FLEXCUBE Investor Servicing** application.

Audience

This manual is intended for the following User/User Roles:

Table 1 Users and Roles

Users	Roles
Implementation team	Implementation of Oracle FLEXCUBE Investor Servicing
Presales team	Install Oracle FLEXCUBE Investor Servicing for demo purpose
Bank personnel	Who installs Oracle FLEXCUBE Investor Servicing

Documentation Accessibility

For information about Oracle's commitment to accessibility, visit the Oracle Accessibility Program website at <http://www.oracle.com/pls/topic/lookup?ctx=acc&id=docacc>.

Access to Oracle Support

Oracle customer access to and use of Oracle support services will be pursuant to the terms and conditions specified in their Oracle order for the applicable services.

Critical Patches

Oracle advises customers to get all their security vulnerability information from the Oracle Critical Patch Update Advisory, which is available at [Critical Patches, Security Alerts and Bulletins](#). All critical patches should be applied in a timely manner to ensure effective security, as strongly recommended by [Oracle Software Security Assurance](#).

Diversity and Inclusion

Oracle is fully committed to diversity and inclusion. Oracle respects and values having a diverse workforce that increases thought leadership and innovation. As part of our initiative to build a more inclusive culture that positively impacts our employees, customers, and partners, we are working to remove insensitive terms from our products and documentation. We are also mindful of the necessity to maintain compatibility with our customers' existing technologies and the need to ensure continuity of service as Oracle's offerings and industry standards evolve. Because of these technical constraints, our effort to remove insensitive terms is ongoing and will take time and external cooperation.

Conventions

The following text conventions are used in this document:

Convention	Meaning
boldface	Boldface type indicates graphical user interface elements associated with an action, or terms defined in text or the glossary.
<i>italic</i>	Italic type indicates book titles, emphasis, or placeholder variables for which you supply particular values.
<code>monospace</code>	Monospace type indicates commands within a paragraph, URLs, code in examples, text that appears on the screen, or text that you enter.

Screenshot Disclaimer

Personal information used in the interface or documents is dummy and does not exist in the real world. It is only for reference purposes.

Acronyms and Abbreviations

The list of the acronyms and abbreviations used are as follows:

Table 2 Acronyms and Abbreviations

Abbreviation	Description
FCIS	Oracle FLEXCUBE Investor Servicing
OEM	Oracle Enterprise Manager

Table 2 (Cont.) Acronyms and Abbreviations

Abbreviation	Description
EMS	Electronic Messaging Service
EJB	Enterprise Java Bean
MDB	Message Driven Beans

1

Change Oracle FLEXCUBE Password

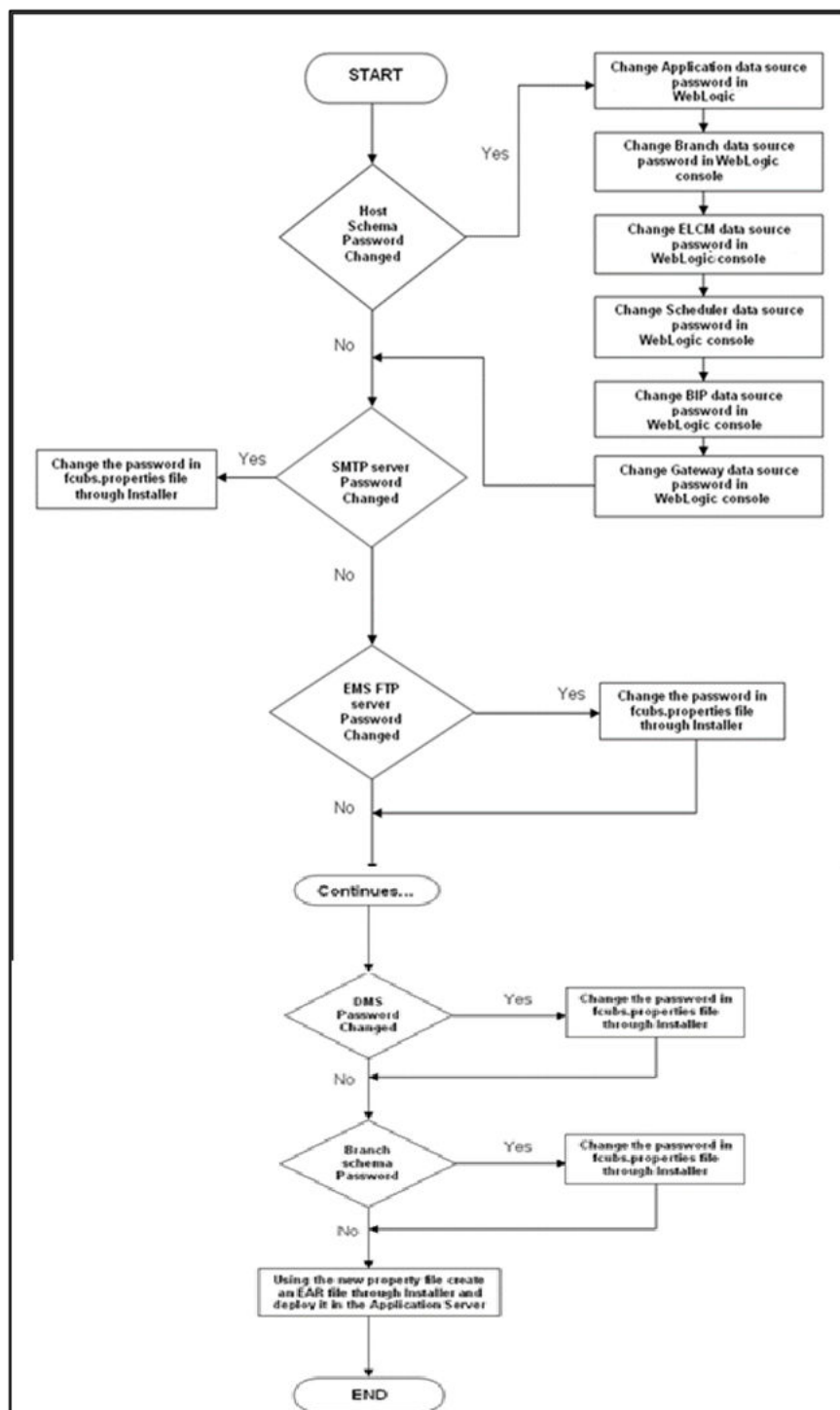
This topic explains the process of changing the passwords of data sources associated with **Oracle FLEXCUBE**.

The methods to change the passwords include the following components:

- Oracle FLEXCUBE Host Schema
- Scheduler Data Source
- Gateway Data Source
- Branch Data Source

The following diagram briefs the steps involved in changing the passwords of the above components.

Figure 1-1 Change Passwords Steps



2

Change Passwords in Oracle WebLogic

This topic describes the method of changing data source passwords from Oracle WebLogic Application Server.

This topic contains the following sub-topics:

- [Prerequisites for Changing Password in Oracle WebLogic](#)
This topic lists the prerequisites for changing password in Oracle WebLogic Server.
- [Change Host Schema Password](#)
This topic explains the process of changing Host Schema password.
- [Change Scheduler Data Source Password](#)
This topic explains the process of changing Scheduler Data Source password.
- [Change Gateway Data Source Password](#)
This topic explains the process of changing Gateway Data Source password.

2.1 Prerequisites for Changing Password in Oracle WebLogic

This topic lists the prerequisites for changing password in Oracle WebLogic Server.

Before you change the password of data sources, ensure that the following activities are completed:

1. Determine the down time for the password change activity.
2. Inform all concerned users and groups.
3. Ensure that all users have logged out of **Oracle FLEXCUBE** system.
4. Stop **Oracle FLEXCUBE** application.
5. Stop the target server to which the data sources point. Follow the steps below to stop the target server:
 - a. Login to Oracle WebLogic application server
 - b. On **Home** screen, navigate to **Environment** and choose **Servers** from the list.
 - c. Select and stop the server by clicking **Stop** button.

2.2 Change Host Schema Password

This topic explains the process of changing Host Schema password.

If you change the host schema password, you also need to change the passwords of the data sources pointing to the host schema.

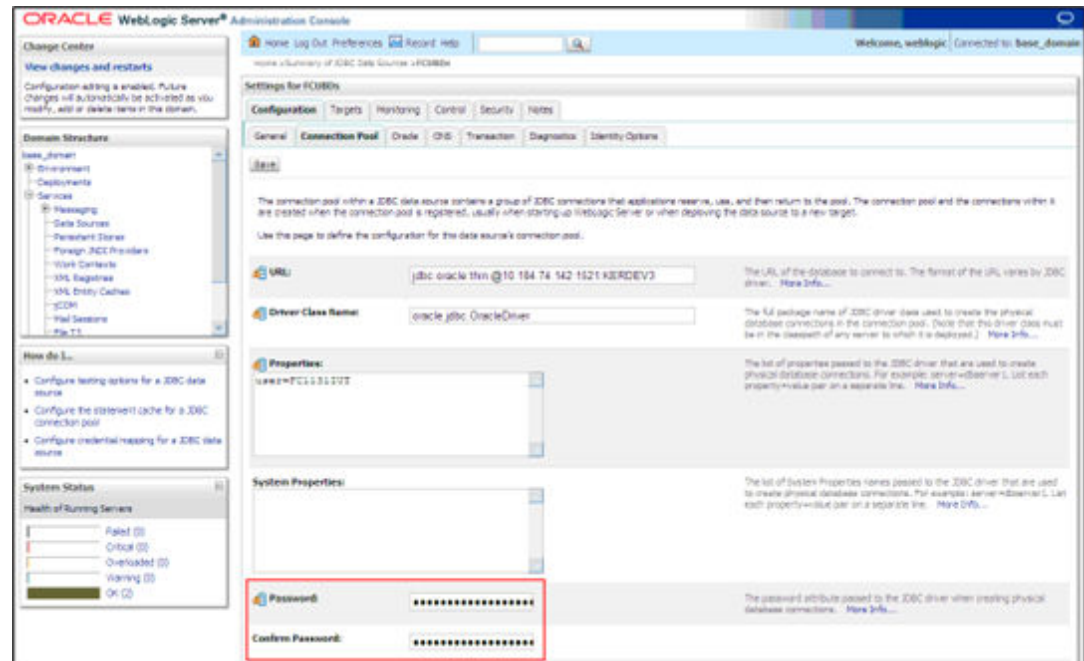
You need to test whether the data source password change was successful. Follow the steps given below:

1. Log in to **Oracle WebLogic Server**.
2. On **Home** screen, navigate to **Services** and choose **Data Sources** from the list.

You will notice a table that contains the list of all data sources created in the application server.

3. Click the data source `jdbc/fejdevDS`.
4. Select **Connection Pool** tab.

Figure 2-1 Connection Pool



5. On the Summary of JDBC Data Sources screen, specify the following fields.
Refer to the table for JDBC Data Sources.

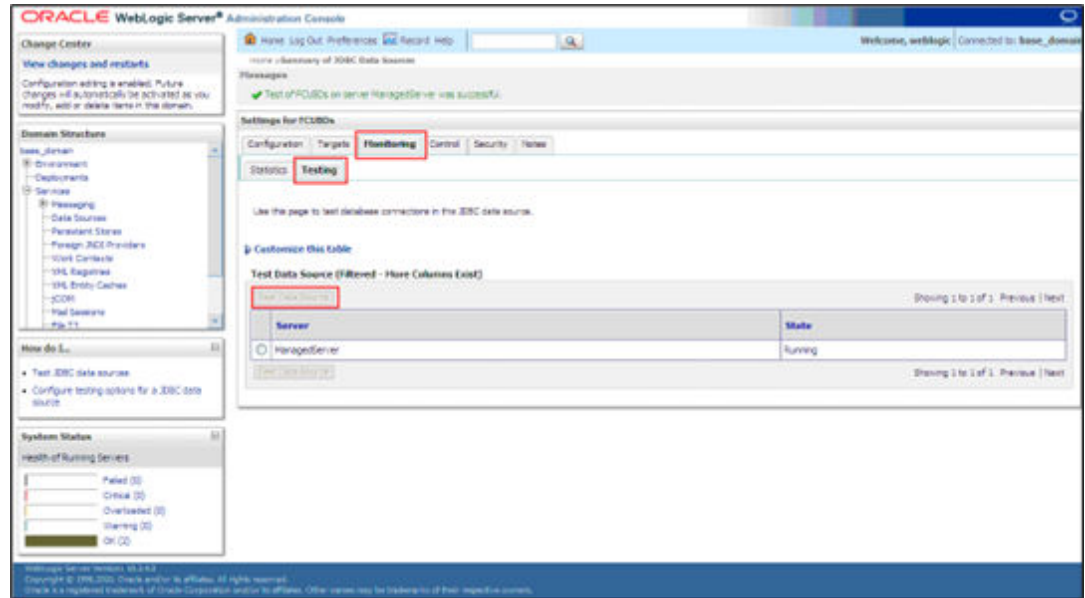
Table 2-1 JDBC Data Sources

Field	Description
Password	Specify the new password.
Confirm Password	Specify the new password again.

6. Click **Save**.
7. Select **Monitoring** tab and choose **Testing** tab within to test database connections in this JDBC data source.

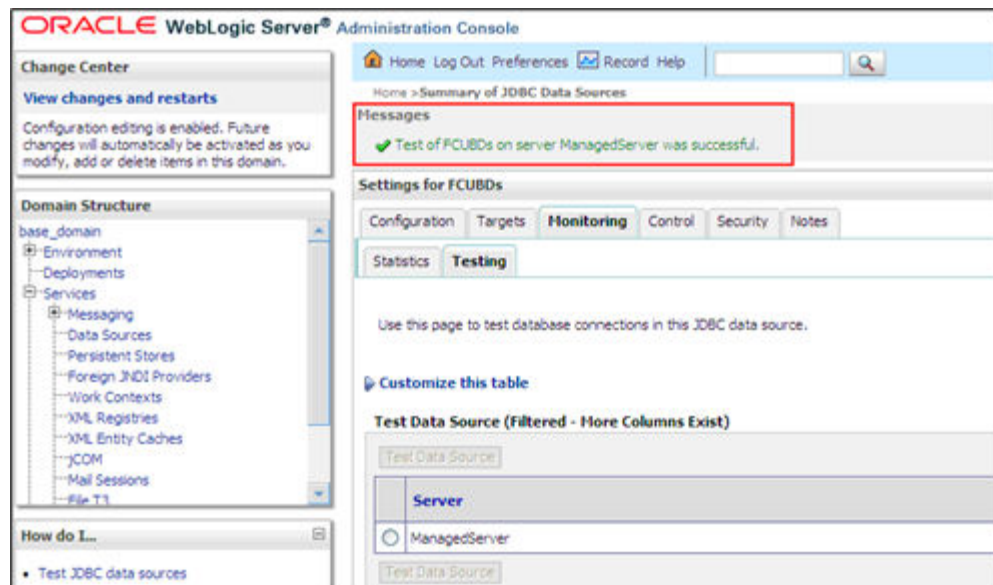
The monitoring screen displays.

Figure 2-2 Monitoring



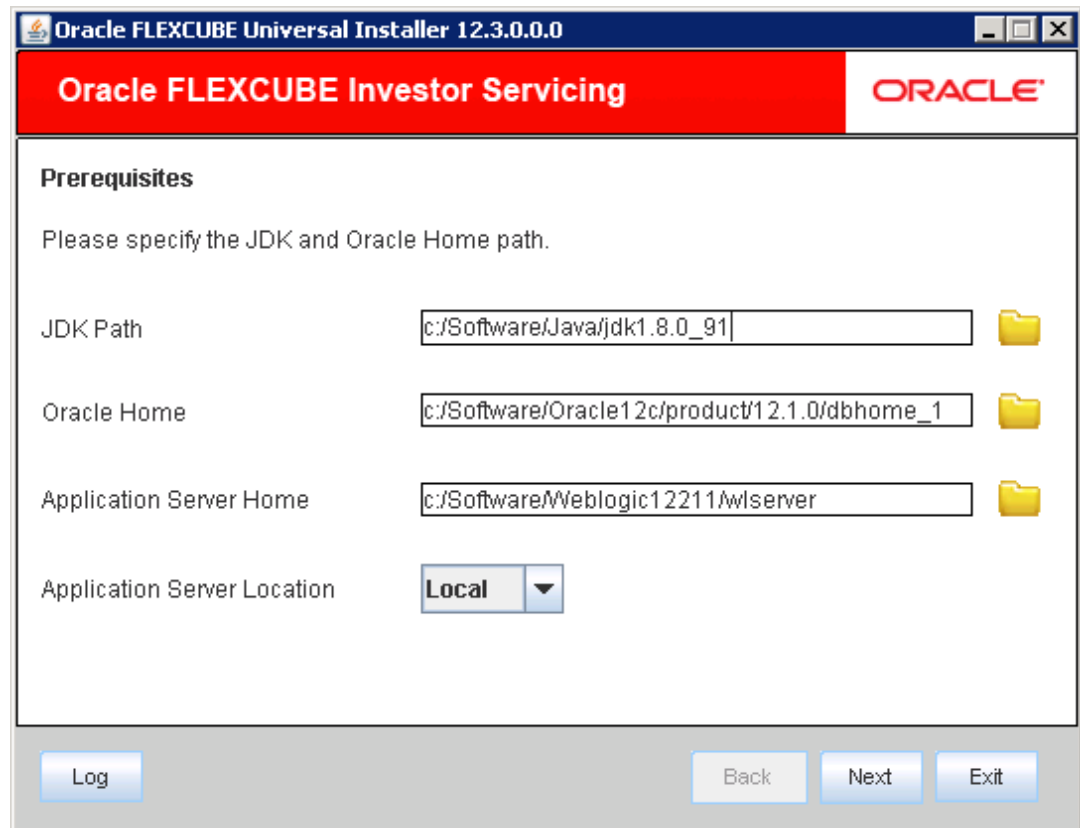
8. Select the target server and click **Test Data Source**.
The screen displays a message confirming successful testing.

Figure 2-3 Test Data Source



9. Restart the Application Server once you get the message.
10. Start **Oracle FLEXCUBE Universal Installer**.
The **Oracle FLEXCUBE Universal Installer** is displayed.

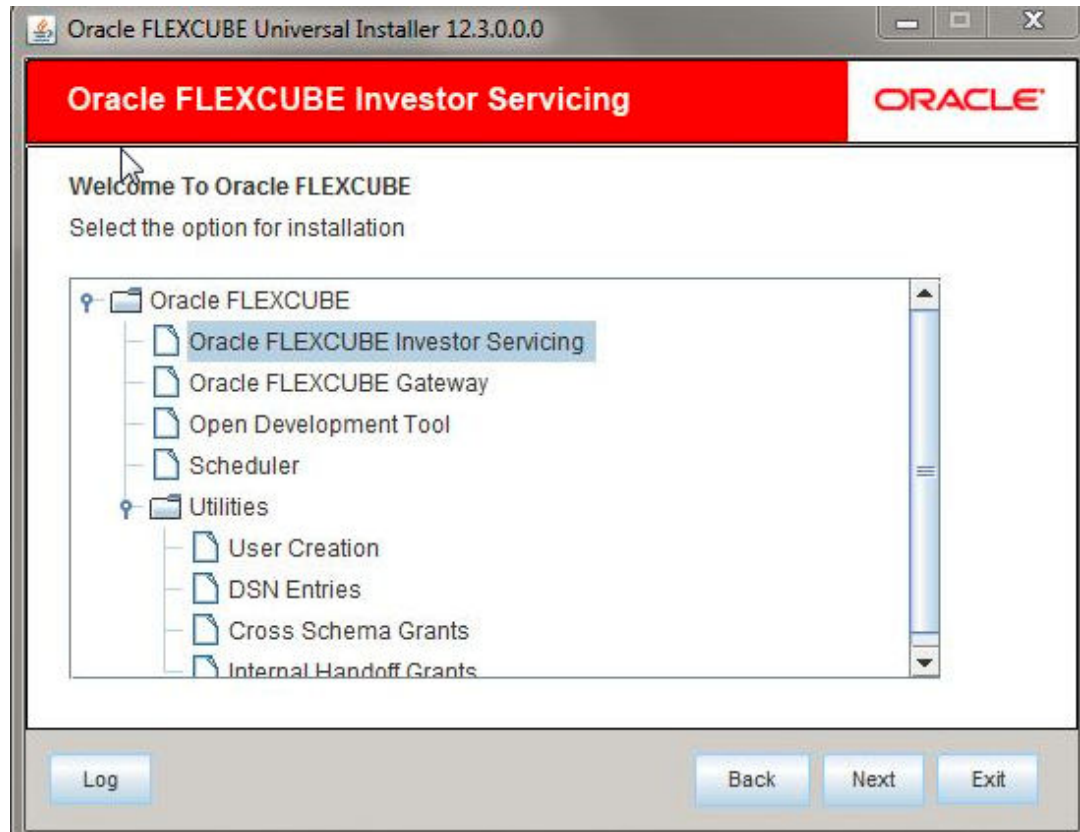
Figure 2-4 Oracle FLEXCUBE Universal Installer



11. Select **Oracle FLEXCUBE Investor Servicing** from the lists of **Oracle FLEXCUBE** options.

The available options for installation are displayed.

Figure 2-5 Option for Installation



12. Launch a summary screen or execute a simple transaction to test.

Try the above process in UAT or any other test environment before you change the password in a production environment.

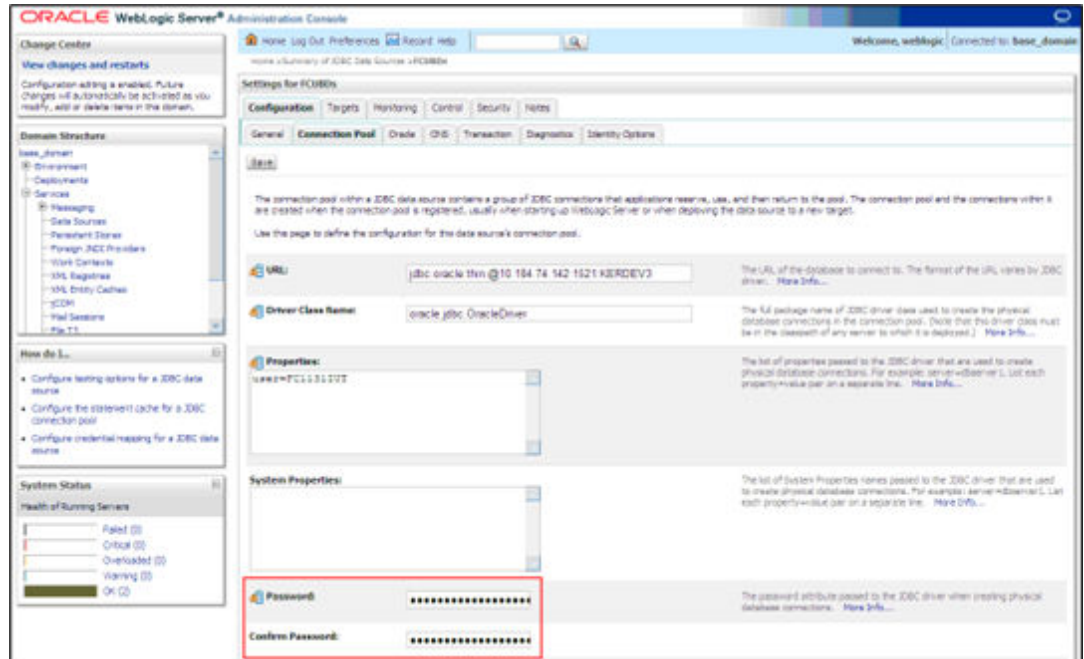
2.3 Change Scheduler Data Source Password

This topic explains the process of changing Scheduler Data Source password.

To change the password of scheduler data source, follow the steps given below:

1. Log in to **Oracle WebLogic Server**.
2. On **Home** screen, navigate to **Services** and choose **Data Sources** from the list.
You will notice a table that contains the list of all data sources created in the application server.
3. Click the data scheduler source `jdbc/fcjschedulerDS`.
4. Select **Connection Pool** tab.

Figure 2-6 Connection Pool



5. On the Summary of JDBC Data Sources screen, specify the following fields.
Refer to the table for JDBC Data Sources.

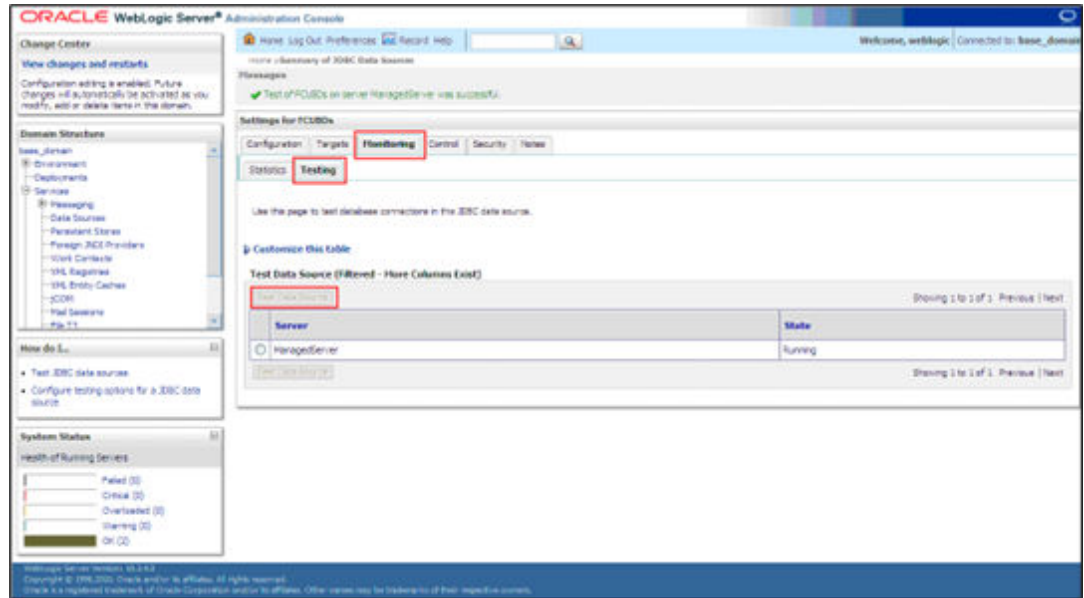
Table 2-2 JDBC Data Sources

Field	Description
Password	Specify the new password.
Confirm Password	Specify the new password again.

6. Click **Save**.
7. Select **Monitoring** tab and choose **Testing** tab under it to test database connections in this JDBC data source.

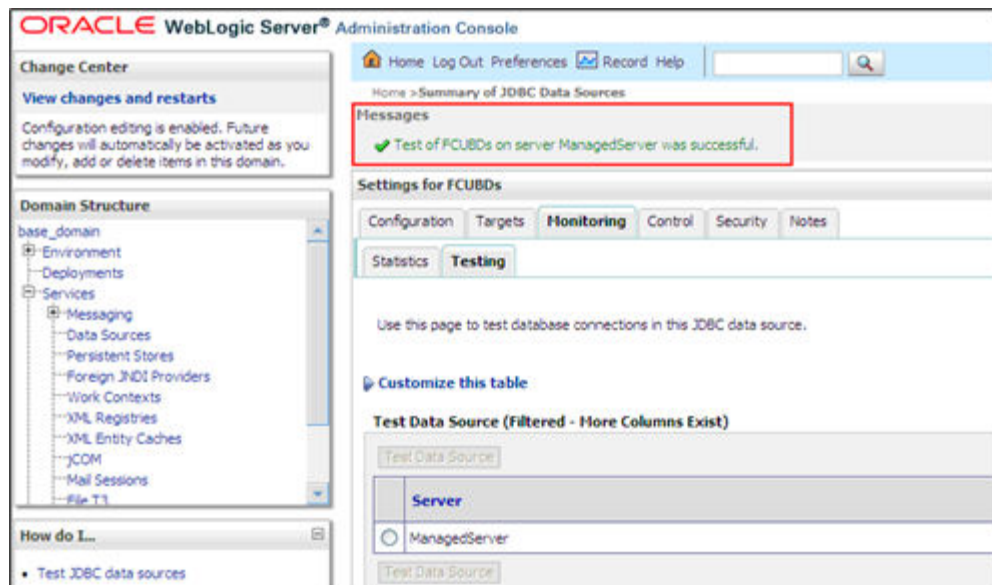
The monitoring screen displays.

Figure 2-7 Monitoring_Testing



8. Select the target server and click **Test Data Source**.
The screen displays a message confirming successful testing.

Figure 2-8 Database Connection Message



9. You need to change the branch schema password after the above steps.
Refer to the topic *Change Password in Decentralized Setup* for information on changing the branch schema password from **Oracle FLEXCUBE Investor Servicing** Installer.
10. Restart the Application Server once you get the message.
11. Start **Oracle FLEXCUBE**.
12. Log in to **Oracle FLEXCUBE** and test whether the change was successful

Try the above process in UAT or any other test environment before you change the password in a production environment.

2.4 Change Gateway Data Source Password

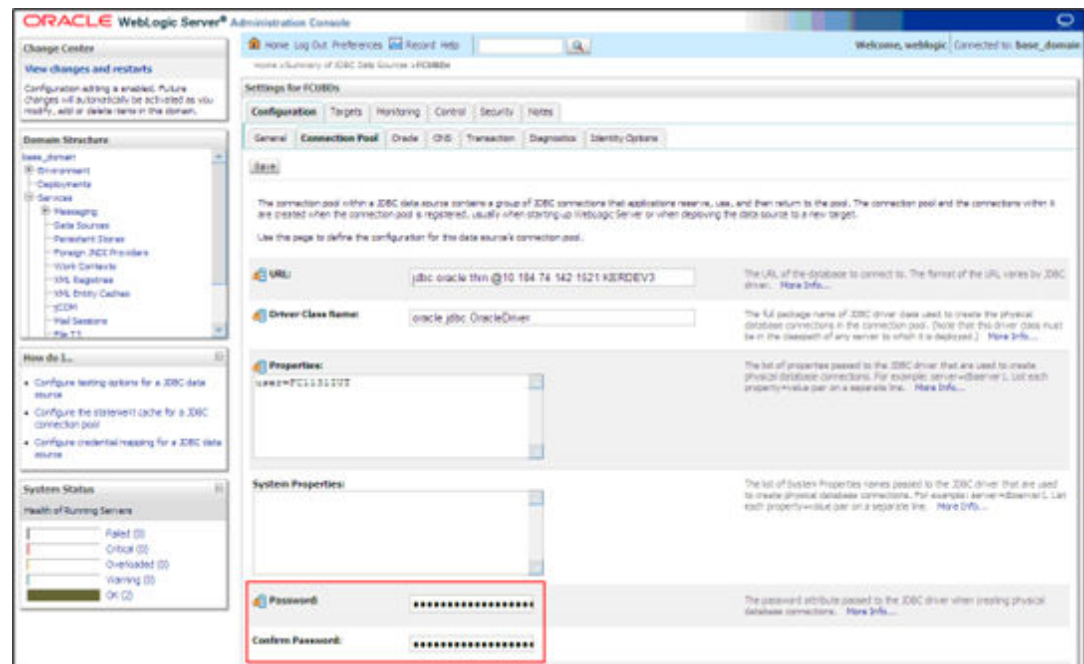
This topic explains the process of changing Gateway Data Source password.

If you change the host schema password, you also need to change the gateway password.

To change the password of Gateway data source, follow the steps given below:

1. Log in to **Oracle WebLogic Server**.
2. On **Home** screen, navigate to **Services** and choose **Data Sources** from the list.
You will notice a table that contains the list of all data sources created in the application server.
3. Select Gateway data source (FLEXTEST.WORLD).
4. Select **Connection Pool** tab.

Figure 2-9 Connection Pool



5. On the Summary of JDBC Data Sources screen, specify the following fields.
Refer to the table for JDBC Data Sources.

Table 2-3 JDBC Data Sources

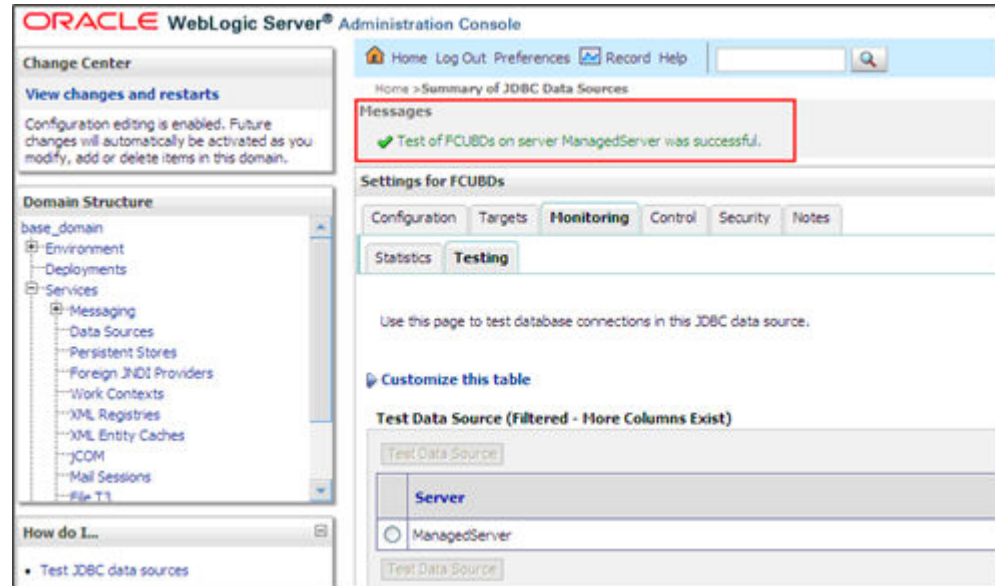
Field	Description
Password	Specify the new password.
Confirm Password	Specify the new password again.

6. Click **Save**.

7. Select **Monitoring** tab and choose **Testing** tab under it to test database connections in this JDBC data source.

The monitoring screen displays.

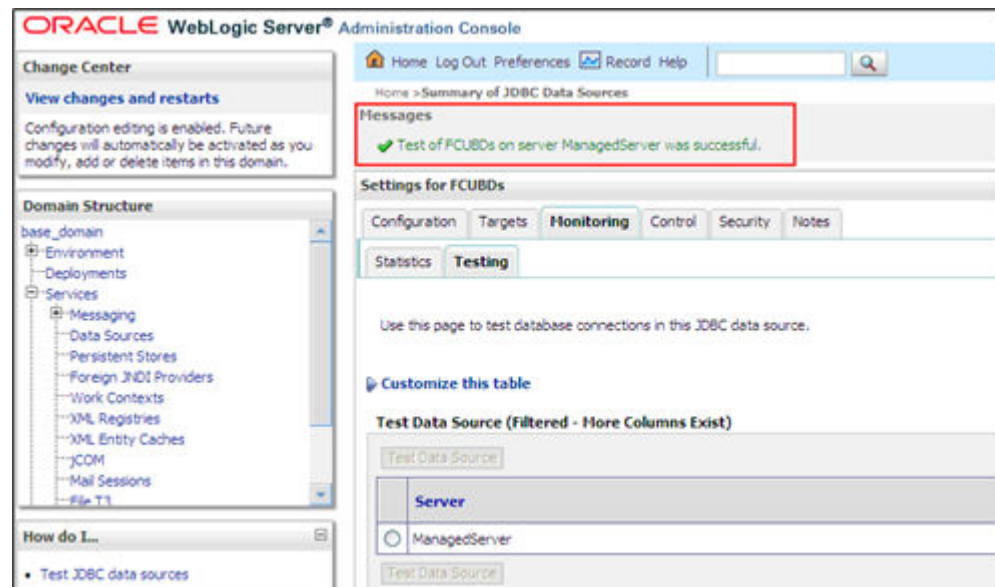
Figure 2-10 Monitoring_Testing_Test Data Source



8. Select the target server and click **Test Data Source**.

The screen displays a message confirming successful testing.

Figure 2-11 Database Connection Message



9. You need to change the branch schema password after the above steps.

Refer to the topic *Change Password in Decentralized Setup* for information on changing the branch schema password from **Oracle FLEXCUBE Investor Servicing Installer**.

10. Restart the Application Server once you get the message.
11. Start **Oracle FLEXCUBE**.
12. Log in to **Oracle FLEXCUBE** and test whether the change was successful

Try the above process in UAT or any other test environment before you change the password in a production environment.