

# Oracle® FLEXCUBE Investor Servicing Gateway Application Deployment in Weblogic



Release 14.7.7.0.0  
G33206-01  
April 2025

ORACLE®

Copyright © 2007, 2025, Oracle and/or its affiliates.

This software and related documentation are provided under a license agreement containing restrictions on use and disclosure and are protected by intellectual property laws. Except as expressly permitted in your license agreement or allowed by law, you may not use, copy, reproduce, translate, broadcast, modify, license, transmit, distribute, exhibit, perform, publish, or display any part, in any form, or by any means. Reverse engineering, disassembly, or decompilation of this software, unless required by law for interoperability, is prohibited.

The information contained herein is subject to change without notice and is not warranted to be error-free. If you find any errors, please report them to us in writing.

If this is software, software documentation, data (as defined in the Federal Acquisition Regulation), or related documentation that is delivered to the U.S. Government or anyone licensing it on behalf of the U.S. Government, then the following notice is applicable:

U.S. GOVERNMENT END USERS: Oracle programs (including any operating system, integrated software, any programs embedded, installed, or activated on delivered hardware, and modifications of such programs) and Oracle computer documentation or other Oracle data delivered to or accessed by U.S. Government end users are "commercial computer software," "commercial computer software documentation," or "limited rights data" pursuant to the applicable Federal Acquisition Regulation and agency-specific supplemental regulations. As such, the use, reproduction, duplication, release, display, disclosure, modification, preparation of derivative works, and/or adaptation of i) Oracle programs (including any operating system, integrated software, any programs embedded, installed, or activated on delivered hardware, and modifications of such programs), ii) Oracle computer documentation and/or iii) other Oracle data, is subject to the rights and limitations specified in the license contained in the applicable contract. The terms governing the U.S. Government's use of Oracle cloud services are defined by the applicable contract for such services. No other rights are granted to the U.S. Government.

This software or hardware is developed for general use in a variety of information management applications. It is not developed or intended for use in any inherently dangerous applications, including applications that may create a risk of personal injury. If you use this software or hardware in dangerous applications, then you shall be responsible to take all appropriate fail-safe, backup, redundancy, and other measures to ensure its safe use. Oracle Corporation and its affiliates disclaim any liability for any damages caused by use of this software or hardware in dangerous applications.

Oracle®, Java, MySQL, and NetSuite are registered trademarks of Oracle and/or its affiliates. Other names may be trademarks of their respective owners.

Intel and Intel Inside are trademarks or registered trademarks of Intel Corporation. All SPARC trademarks are used under license and are trademarks or registered trademarks of SPARC International, Inc. AMD, Epyc, and the AMD logo are trademarks or registered trademarks of Advanced Micro Devices. UNIX is a registered trademark of The Open Group.

This software or hardware and documentation may provide access to or information about content, products, and services from third parties. Oracle Corporation and its affiliates are not responsible for and expressly disclaim all warranties of any kind with respect to third-party content, products, and services unless otherwise set forth in an applicable agreement between you and Oracle. Oracle Corporation and its affiliates will not be responsible for any loss, costs, or damages incurred due to your access to or use of third-party content, products, or services, except as set forth in an applicable agreement between you and Oracle.

# Contents

## Preface

---

Purpose	iv
Audience	iv
Documentation Accessibility	iv
Critical Patches	v
Diversity and Inclusion	v
Conventions	v
Screenshot Disclaimer	v
Acronyms and Abbreviations	v

## 1 Gateway Application Full Deployment

---

1.1 Gateway EJB Application FULL Deployment	1-1
1.2 Gateway MDB Application FULL Deployment	1-13
1.3 Gateway HTTP Servlet Application Full Deployment	1-24
1.4 Gateway Webservices Application Full Deployment	1-32

# Preface

**Oracle FLEXCUBE Investor Servicing** is a comprehensive mutual funds automation software from Oracle® Financial Servicing Software Ltd.©.

You can use the system to achieve optimum automation of all your mutual fund investor servicing processes, as it provides guidelines for specific tasks, descriptions of various features and processes, and general information.

This topic contains the following sub-topics:

- [Purpose](#)
- [Audience](#)
- [Documentation Accessibility](#)
- [Critical Patches](#)
- [Diversity and Inclusion](#)
- [Conventions](#)
- [Screenshot Disclaimer](#)
- [Acronyms and Abbreviations](#)

## Purpose

This manual is designed to help acquaint you with the installation of **Oracle FLEXCUBE Investor Servicing** application.

## Audience

This manual is intended for the following User/User Roles:

**Table 1 Users and Roles**

Users	Roles
Implementation team	Implementation of Oracle FLEXCUBE Investor Servicing
Presales team	Install Oracle FLEXCUBE Investor Servicing for demo purpose
Bank personnel	Who installs Oracle FLEXCUBE Investor Servicing

## Documentation Accessibility

For information about Oracle's commitment to accessibility, visit the Oracle Accessibility Program website at <http://www.oracle.com/pls/topic/lookup?ctx=acc&id=docacc>.

## Access to Oracle Support

Oracle customer access to and use of Oracle support services will be pursuant to the terms and conditions specified in their Oracle order for the applicable services.

## Critical Patches

Oracle advises customers to get all their security vulnerability information from the Oracle Critical Patch Update Advisory, which is available at [Critical Patches, Security Alerts and Bulletins](#). All critical patches should be applied in a timely manner to ensure effective security, as strongly recommended by [Oracle Software Security Assurance](#).

## Diversity and Inclusion

Oracle is fully committed to diversity and inclusion. Oracle respects and values having a diverse workforce that increases thought leadership and innovation. As part of our initiative to build a more inclusive culture that positively impacts our employees, customers, and partners, we are working to remove insensitive terms from our products and documentation. We are also mindful of the necessity to maintain compatibility with our customers' existing technologies and the need to ensure continuity of service as Oracle's offerings and industry standards evolve. Because of these technical constraints, our effort to remove insensitive terms is ongoing and will take time and external cooperation.

## Conventions

The following text conventions are used in this document:

Convention	Meaning
<b>boldface</b>	Boldface type indicates graphical user interface elements associated with an action, or terms defined in text or the glossary.
<i>italic</i>	Italic type indicates book titles, emphasis, or placeholder variables for which you supply particular values.
<code>monospace</code>	Monospace type indicates commands within a paragraph, URLs, code in examples, text that appears on the screen, or text that you enter.

## Screenshot Disclaimer

Personal information used in the interface or documents is dummy and does not exist in the real world. It is only for reference purposes.

## Acronyms and Abbreviations

The list of the acronyms and abbreviations used are as follows:

**Table 2 Acronyms and Abbreviations**

Abbreviation	Description
<b>FCIS</b>	Oracle FLEXCUBE Investor Servicing
<b>OEM</b>	Oracle Enterprise Manager

**Table 2 (Cont.) Acronyms and Abbreviations**

Abbreviation	Description
<b>EMS</b>	Electronic Messaging Service
<b>EJB</b>	Enterprise Java Bean
<b>MDB</b>	Message Driven Beans

# 1

## Gateway Application Full Deployment

This topic explains the steps to deploy Gateway Application into Weblogic Server.

The methods of deploying Gateway Application include the following sub-topics:

- [Gateway EJB Application FULL Deployment](#)  
This topic describes the steps to install Gateway EJB Application into weblogic server in full deployment mode.
- [Gateway MDB Application FULL Deployment](#)  
This describes the steps to install Gateway MDB Application into weblogic server in full deployment mode.
- [Gateway HTTP Servlet Application Full Deployment](#)  
This topic describes the steps to install Gateway HTTP Servlet Application into weblogic server in full deployment mode.
- [Gateway Webservices Application Full Deployment](#)  
This topic describes the steps to install Gateway Webservices Application into weblogic server in full deployment mode.

### 1.1 Gateway EJB Application FULL Deployment

This topic describes the steps to install Gateway EJB Application into weblogic server in full deployment mode.

1. Start **Oracle FLEXCUBE Universal Installer**.

The **Oracle FLEXCUBE Universal Installer** is displayed.

**Figure 1-1 Oracle FLEXCUBE Universal Installer**

2. On **Oracle FLEXCUBE Universal Installer** screen, enter the following details.  
Refer to the table for JDK and Oracle Home path.

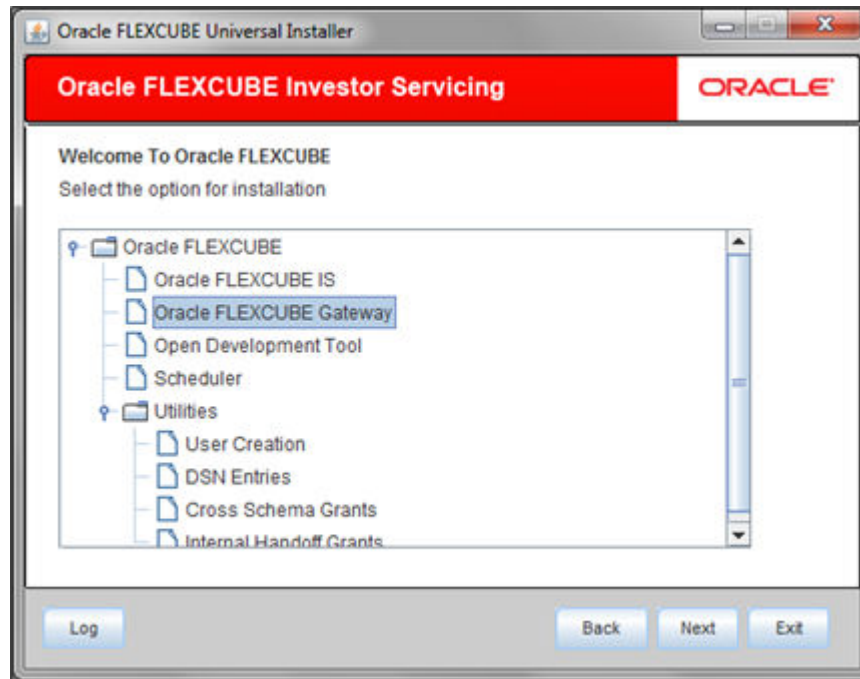
**Table 1-1 JDK and Oracle Home path**

Field	Description
<b>JDK Path</b>	Provide Home folder path of JDK1.8.
<b>Oracle Home</b>	Provide home folder path of Oracle Client or Database.
<b>Application Server Home</b>	Provide home folder path of Application Server.
<b>Application Server Location</b>	Select location of the application server either local or remote.

3. Click **Next** to select the option for installation.
4. Select **Oracle FLEXCUBE Gateway** from the lists of **Oracle FLEXCUBE** options.  
The available options for installation are displayed.

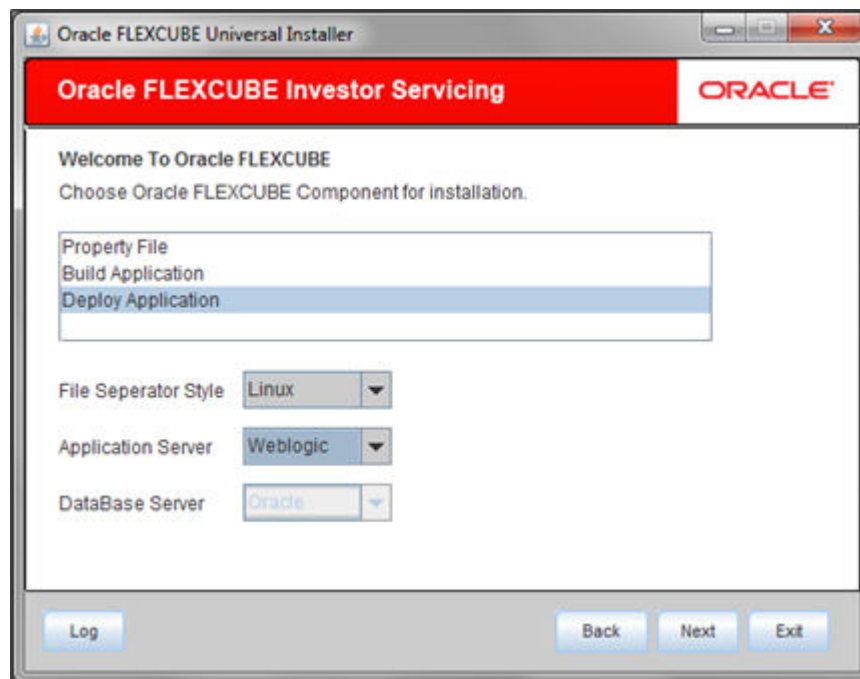


Figure 1-2 Oracle FLEXCUBE Universal Installer



5. Click **Next** to choose **Oracle FLEXCUBE** component for installation.
6. Select **Deploy Application**.

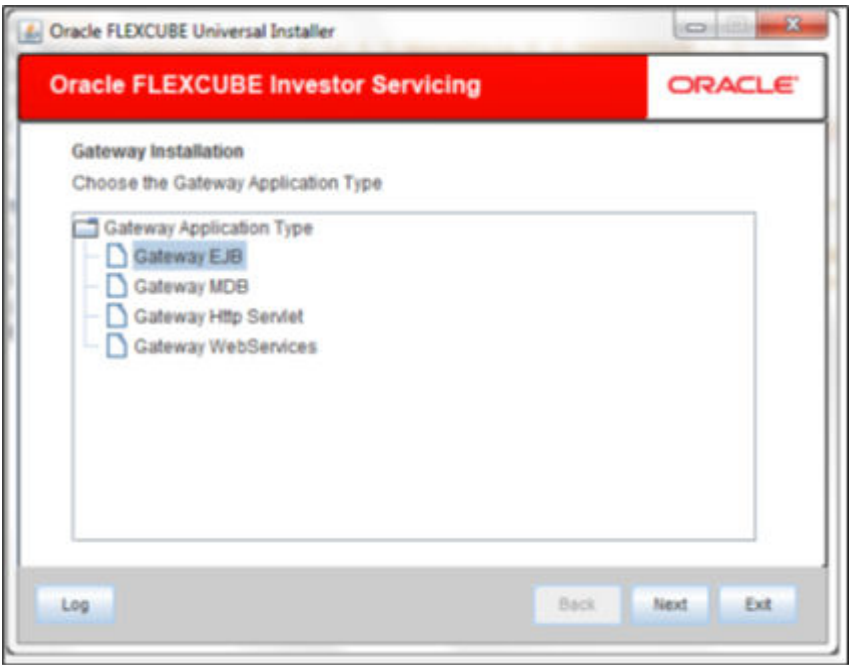
Figure 1-3 Select Deploy Application



7. Choose the appropriate server's **Operating System** from the drop-down.
8. Choose **Weblogic** from the application server drop-down.
9. Click **Next** and select **Gateway EJB** from the **Gateway Application Type**.

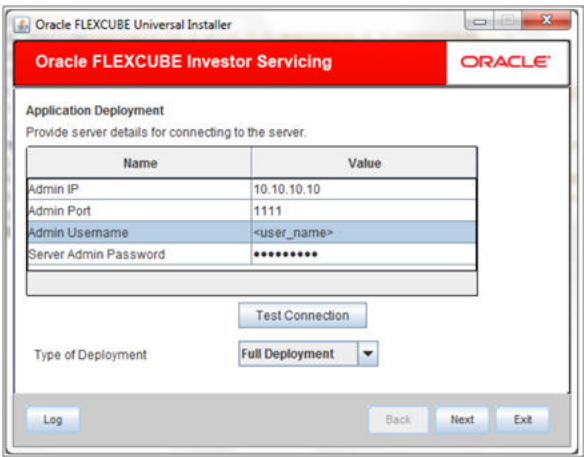
The screen displays the selected Gateway Application Type.

Figure 1-4 Gateway Application Type\_Gateway EJB



10. Specify Server details to connect to the server and click **Next**.

Figure 1-5 Gateway Application Type\_Gateway EJB\_Server



Refer to the table for server details.

Table 1-2 Server details

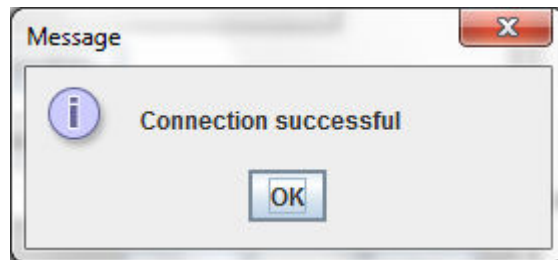
Field	Description
Admin IP	Provide host address of Admin server.

**Table 1-2 (Cont.) Server details**

Field	Description
<b>Admin Port</b>	Provide port number of Weblogic server.
<b>Admin UserName</b>	Provide the appropriate Admin Username of the Weblogic Application server.
<b>Admin Password</b>	Provide the appropriate Admin Password of the Weblogic Application server.
<b>Type of Deployment</b>	Choose <b>Full Deployment</b> .

11. Click **Test Connection** to test the connection with the Application server.  
On successful connection, the following message is displayed.

**Figure 1-6 Information Message on Successful Connection**



12. Click **Ok** and click **Next** in the installer.  
The following screen is displayed.

**Figure 1-7 Application Details for Full Deployment**

13. Specify Application details to deploy the EAR.

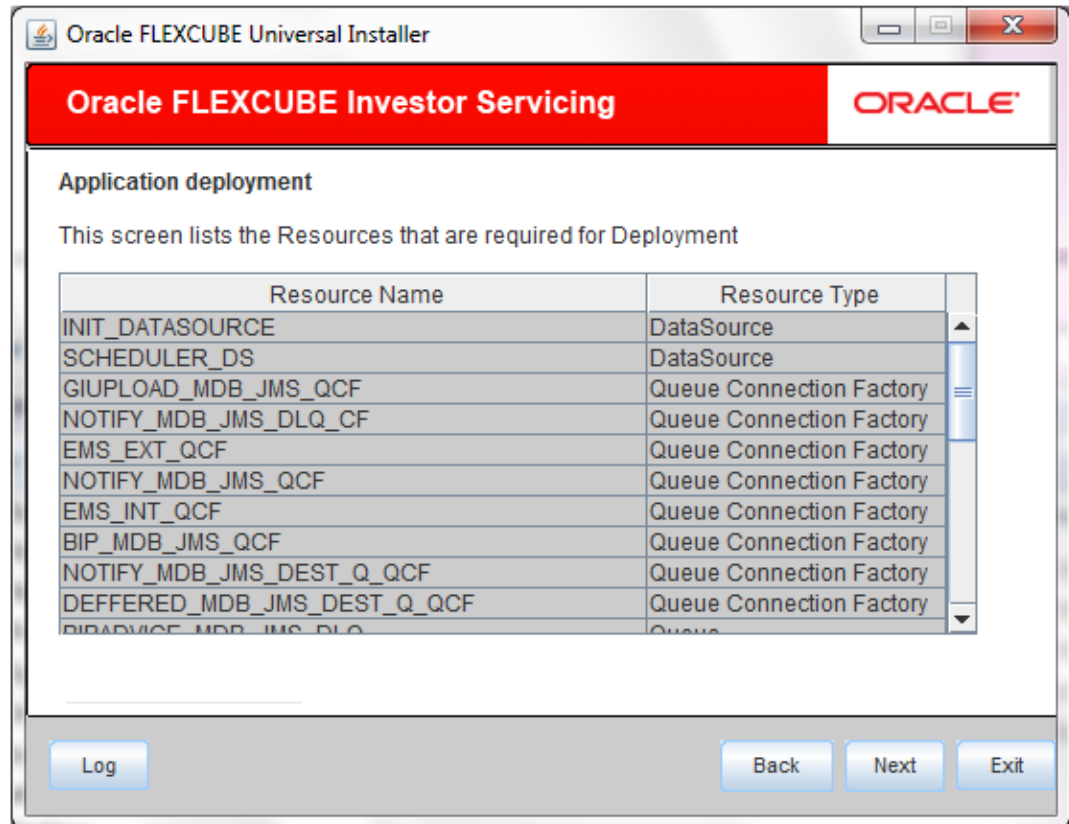
Refer to the table for Application details.

**Table 1-3 Application details**

Field	Description
<b>EAR Path</b>	Select the application EAR to be deployed using the browse button. <b>Note:</b> The Application EAR path cannot be copied and pasted on to the text box, thereby demanding the use of the <b>Browse</b> button to select the EAR.
<b>Property File Path</b>	Select the appropriate path to the external properties file. If the properties file is internal to the application EAR, it would be fetched on selection of the EAR and will be in a non-editable state.
<b>Application Name</b>	Selection of the EAR would fetch the Application Name and it will be in a non-editable state.
<b>Application Context</b>	Selection of the EAR would fetch the Application Context and it will be in a non-editable state.
<b>Manage Resources</b>	Select this box if resources are to be created along with deployment.

14. Click **Next**. If **Manage Resources** is not checked, you can continue to provide Server Environment details for deployment.
15. Select **Manage Resources** box if resources are to be created along with deployment.  
The screen provides a read only list of resources.

**Figure 1-8 Resources lists**



16. Specify the resource details that are required for deployment.
17. Click **Next** after the resource details are updated.

The following screen is displayed.

**Figure 1-9 Resource Details Update**

**Oracle FLEXCUBE Investor Servicing**

**Application deployment**

Please select the resource and update the details

Resource ID: **INIT\_DATASOURCE**

S.No.	Property Name	Property Value
1	DataSource Driver	oracle.jdbc.OracleDriver
2	DataSource Type	INIT_DATASOURCE
3	Schema UserName	abc
4	Schema PAssword	...
5	IP Address	
6	Port Number	1522
7	Service Name	avast1
8	Initial Capacity	15

Buttons: Save Changes, Test Connection, ☐ Modify JDBC url, Log, Back, Next, Exit

Refer to the table for resource details.

**Table 1-4 Resource details**

Field	Description
<b>Resource ID</b>	Specify <b>Resource ID</b> . Also, you can select the resource from a list of data sources maintained and update the details.
<b>DataSource Driver</b>	Specify the <b>JDBC driver URL</b> with which the connection is to be established. Ex: oracle.jdbc.OracleDriver for Non-XA datasources
<b>DataSource Type</b>	Specify the type of datasource that is to be created, XA or Non-XA.
<b>Schema Username</b>	Specify the username of the schema to which the connection is to be established.
<b>Schema Password</b>	Specify the password of the schema.
<b>IP Address</b>	Specify the host address of the schema.
<b>Port Number</b>	Specify the port number of schema.
<b>Service Name</b>	Specify the service name of schema.
<b>Initial Capacity</b>	It is the number of physical connections that can be created when creating the connection pool in the data source
<b>Maximum Capacity</b>	The maximum number of physical connections that this connection pool can contain.

**Table 1-4 (Cont.) Resource details**

Field	Description
<b>Capacity Increment</b>	The increment by which this JDBC connection pool's capacity is expanded.
<b>Shrink Frequency</b>	The number of seconds to wait before shrinking a connection pool that has incrementally increased to meet demand.
<b>Connection Reserve Timeout</b>	The number of seconds after which a call to reserve a connection from the connection pool will timeout.

18. Click **Test Connection** to establish connection with required details provided in the table against corresponding value of **Resource ID**.
19. Click **Save Changes** to save the values provided in the table against corresponding value of **Resource ID**.
20. Select **Modify JDBC Url** to modify the provided JDBC url.  
If **Modify JDBC Url** is selected, the following screen is displayed.

**Figure 1-10 JDBC Url**

21. Specify **Resource ID** and click **Test Connection** to check the connection using the changed Url. If the Url changed is correct, then the successful connection will be made. Click **Save Changes** to save the changed JDBC Url.

**Resource ID:** It provides the list of all the datasources created. Select the data source for which the **JDBC Url** needs to be modified.

**Note:** The **JDBC Url** generated from the previous screen will be displayed here. If the user wants to change the **JDBC Url**, it can be changed in the current screen.

22. Specify Server Environment details for deployment.

The **Domain Name** shows the weblogic domain name.

23. On Server Environment details screen, click **Get Details** button.

The list of available servers are displayed. Atleast, one server should be selected to proceed.

**Figure 1-11 Server Environment Details for Full Deployment**

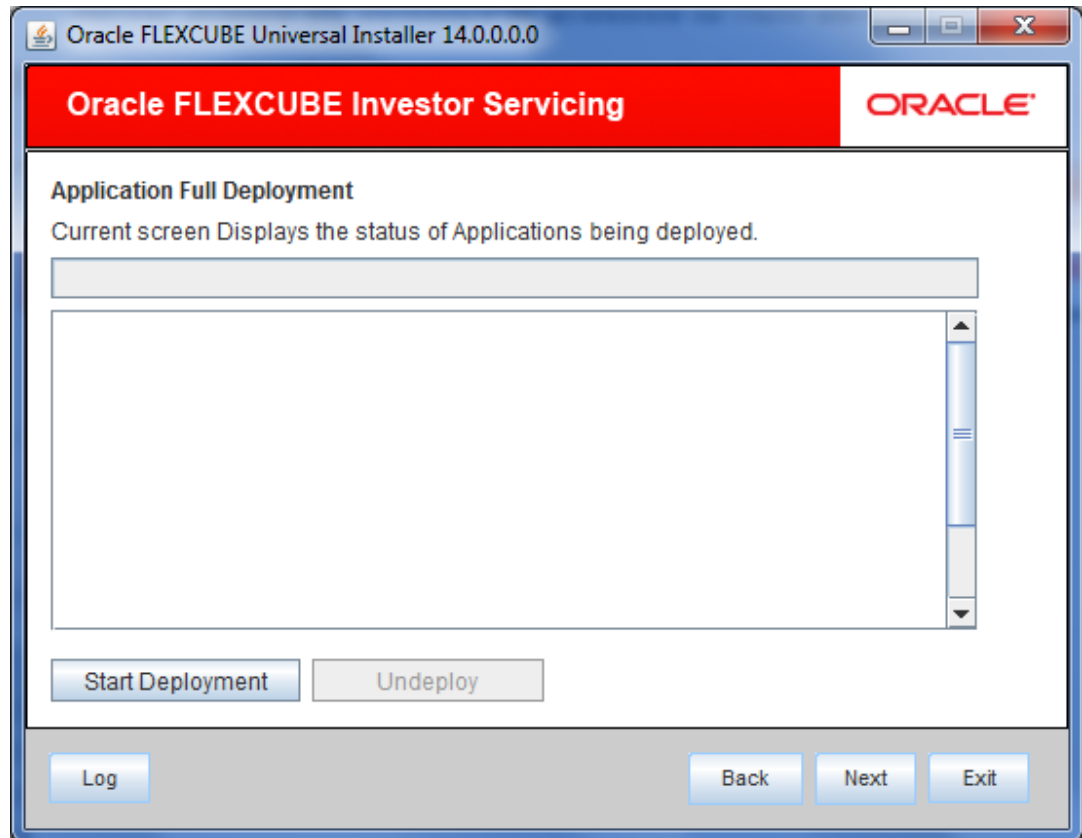
S.No.	Server Name	Deploy
1	AdminServer	<input type="checkbox"/>
2	ManagedServer	<input type="checkbox"/>
3	ClusterTest	<input type="checkbox"/>
4	AVAST	<input type="checkbox"/>

24. Click **Next** after the server environment details are specified.

The following screen is displayed.

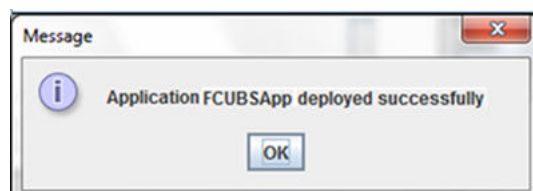


**Figure 1-12 Application Deployment Status for Full Deployment**

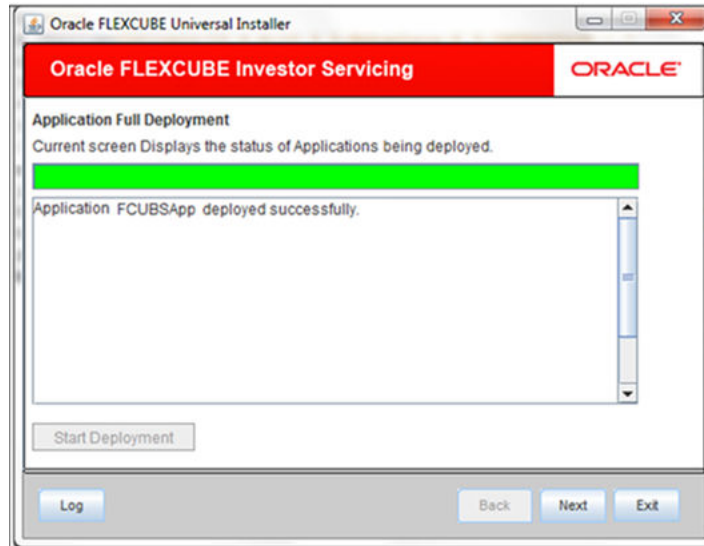


25. Click **Start Deployment** to start the process of application deployment.  
The following screen displays the status of Applications being deployed.

**Figure 1-13 Application FCUBSApp deployed successfully**



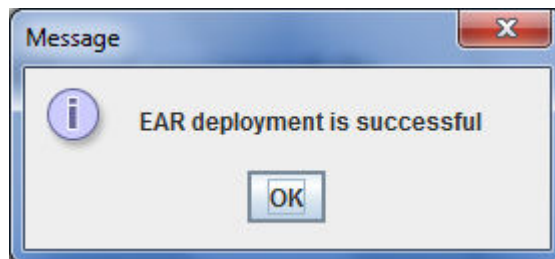
**Figure 1-14 Start Application Full Deployment**



26. You can view the information message on successful deployment and click **Ok** in the **Message** window.

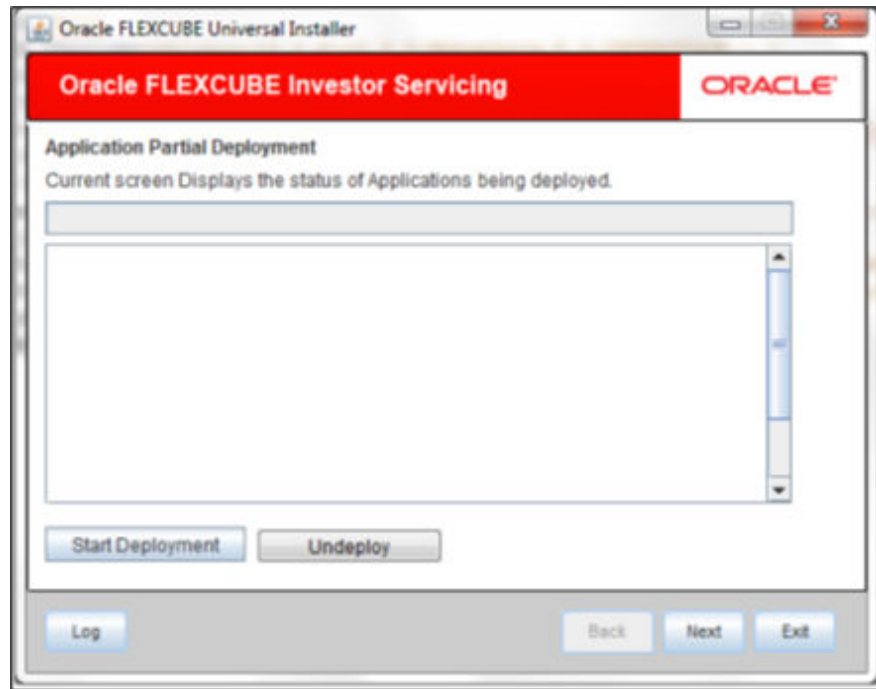
The following **Message** window is displayed.

**Figure 1-15 EAR Deployment Message**



27. Click **Undeploy** button for undeploying the partially deployed EAR from the server.  
If the deployment is not successful, the **Undeploy** button will be enabled in the **Application Deployment** status screen.

**Figure 1-16 Undeploy**



## 1.2 Gateway MDB Application FULL Deployment

This describes the steps to install Gateway MDB Application into weblogic server in full deployment mode.

1. Start **Oracle FLEXCUBE Universal Installer**.

The **Oracle FLEXCUBE Universal Installer** is displayed.

**Figure 1-17 Oracle FLEXCUBE Universal Installer**

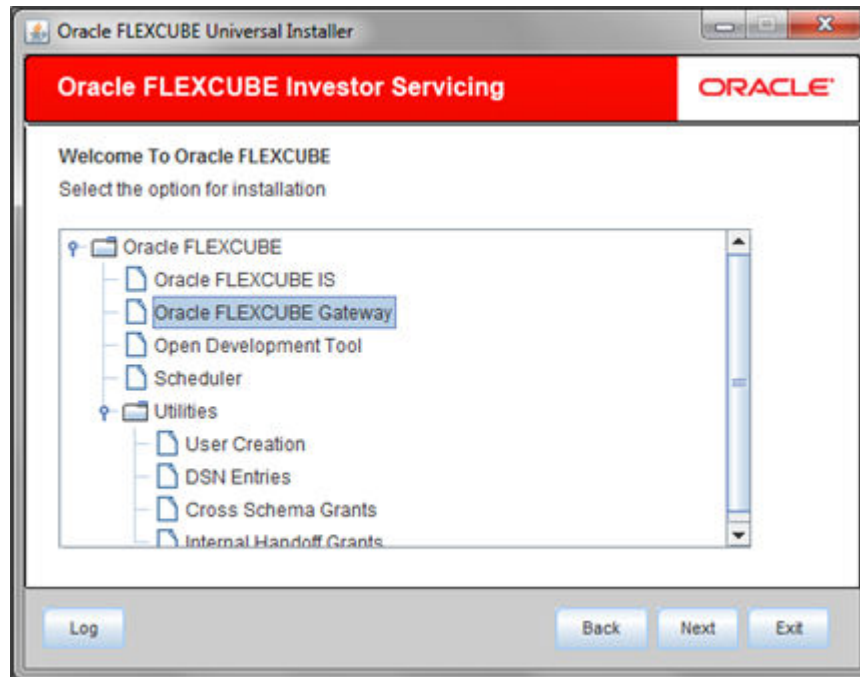
2. On **Oracle FLEXCUBE Universal Installer** screen, enter the following details.  
Refer to the table for JDK and Oracle Home path.

**Table 1-5 JDK and Oracle Home path**

Field	Description
<b>JDK Path</b>	Provide Home folder path of JDK1.8.
<b>Oracle Home</b>	Provide home folder path of Oracle Client or Database.
<b>Application Server Home</b>	Provide home folder path of Application Server.
<b>Application Server Location</b>	Select location of the application server either local or remote.

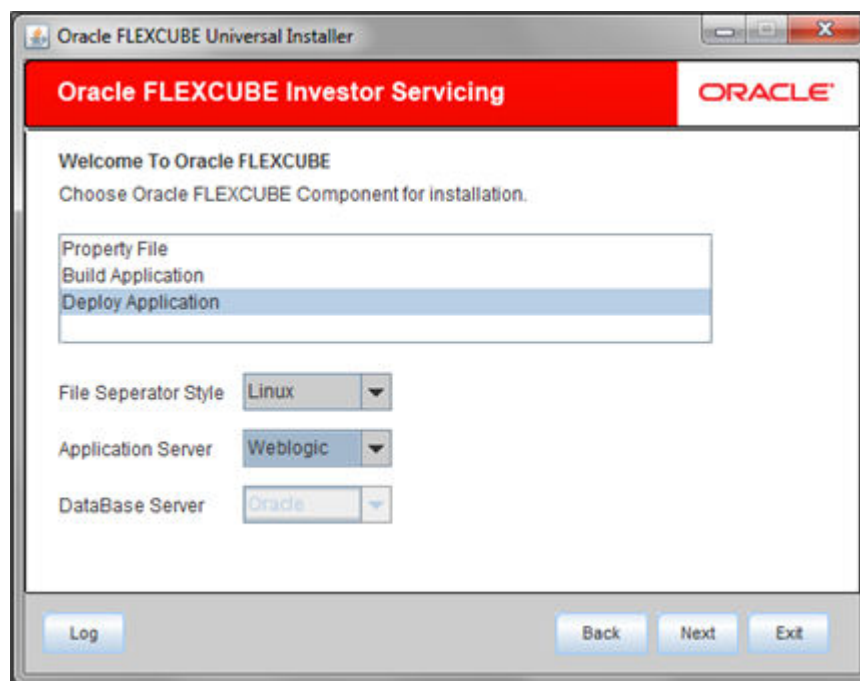
3. Click **Next** to select the option for installation.
4. Select **Oracle FLEXCUBE Gateway** from the lists of **Oracle FLEXCUBE** options.  
The available options for installation are displayed.

Figure 1-18 Select Oracle FLEXCUBE Gateway



5. Click **Next** to choose **Oracle FLEXCUBE** component for installation.
6. Select **Deploy Application**.

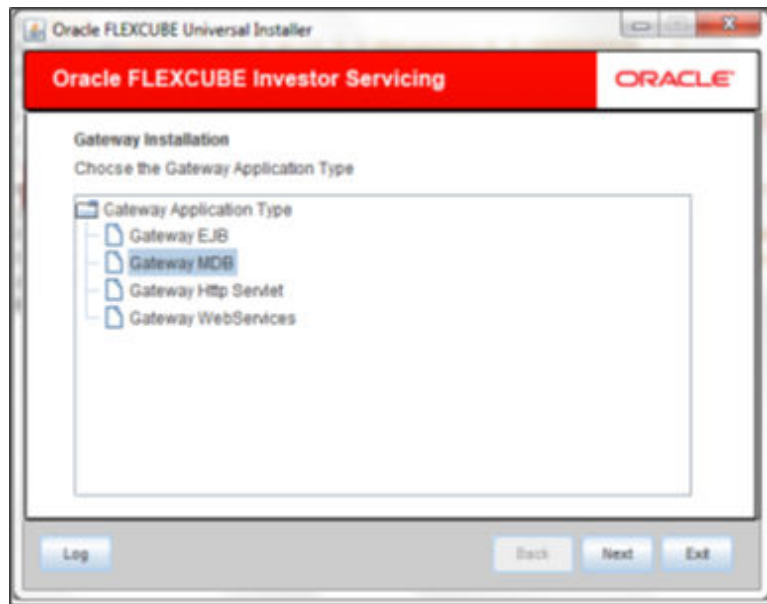
Figure 1-19 Select Deploy Application



7. Choose the appropriate server's **Operating System** from the drop-down.
8. Choose **Weblogic** from the application server drop-down.
9. Click **Next** and select **Gateway MDB** from the **Gateway Application Type**.

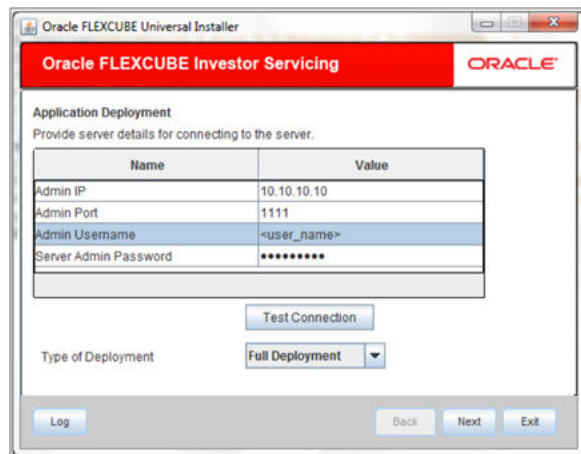
The screen displays the selected Gateway Application Type.

**Figure 1-20 Gateway Application Type\_Gateway MDB**



10. Specify Server details to connect to the server and click **Next**.

**Figure 1-21 Gateway Application Type\_Gateway EJB\_Server**



Refer to the table for server details.

**Table 1-6 Server details**

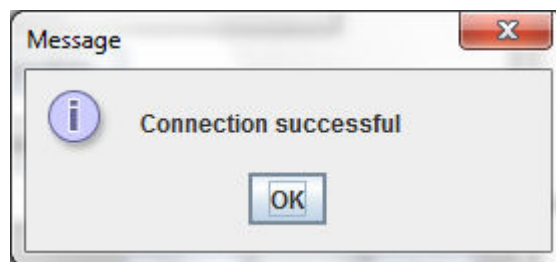
Field	Description
<b>Admin IP</b>	Provide host address of Admin server.
<b>Admin Port</b>	Provide port number of Weblogic server.

**Table 1-6 (Cont.) Server details**

Field	Description
<b>Admin UserName</b>	Provide the appropriate Admin Username of the Weblogic Application server.
<b>Admin Password</b>	Provide the appropriate Admin Password of the Weblogic Application server.
<b>Type of Deployment</b>	Choose <b>Full Deployment</b> .

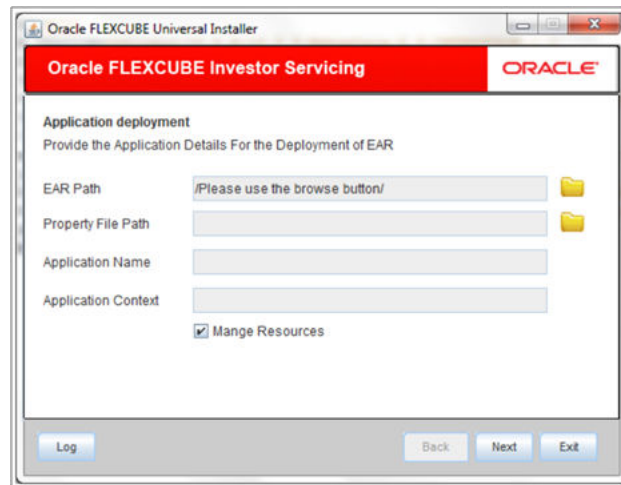
11. Click **Test Connection** to test the connection with the Application server.  
On successful connection, the following message is displayed.

**Figure 1-22 Information Message on Successful Connection**



12. Click **Ok** and click **Next** in the installer.  
The following screen is displayed.

**Figure 1-23 Application Details for Full Deployment**



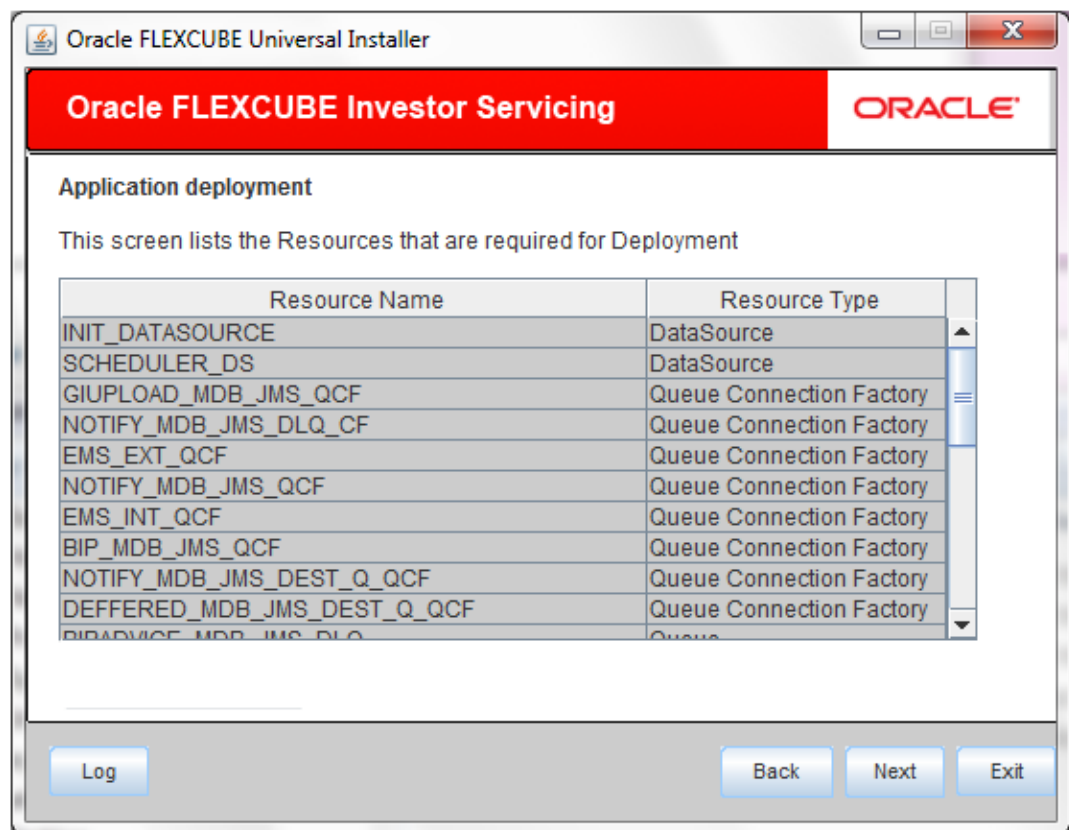
13. Specify Application details to deploy the EAR.  
Refer to the table for Application details.

**Table 1-7 Application details**

Field	Description
<b>EAR Path</b>	Select the application EAR to be deployed using the browse button. <b>Note:</b> The Application EAR path cannot be copied and pasted on to the text box, thereby demanding the use of the <b>Browse</b> button to select the EAR.
<b>Property File Path</b>	Select the appropriate path to the external properties file. If the properties file is internal to the application EAR, it would be fetched on selection of the EAR and will be in a non-editable state.
<b>Application Name</b>	Selection of the EAR would fetch the Application Name and it will be in a non-editable state.
<b>Application Context</b>	Selection of the EAR would fetch the Application Context and it will be in a non-editable state.
<b>Manage Resources</b>	Select this box if resources are to be created along with deployment.

14. Click **Next**. If **Manage Resources** is not checked, you can continue to provide Server Environment details for deployment.
15. Select **Manage Resources** box if resources are to be created along with deployment.  
The screen provides a read only list of resources.

**Figure 1-24 Resources lists**



16. Specify the resource details that are required for deployment.
17. Click **Next** after the resource details are updated.



The following screen is displayed.

**Figure 1-25 Resource Details Update**

Oracle FLEXCUBE Universal Installer

**Oracle FLEXCUBE Investor Servicing** ORACLE

**Application deployment**

Please select the resource and update the details

Resource ID: **INIT\_DATASOURCE**

S.No.	Property Name	Property Value
1	DataSource Driver	oracle.jdbc.OracleDriver
2	DataSource Type	INIT_DATASOURCE
3	Schema Username	abc
4	Schema Password	...
5	IP Address	
6	Port Number	1522
7	Service Name	avast1
8	Initial Capacity	15

Save Changes Test Connection ☐ Modify JDBC url

Log Back Next Exit

Refer to the table for resource details.

**Table 1-8 Resource details**

Field	Description
<b>Resource ID</b>	Specify <b>Resource ID</b> . Also, you can select the resource from a list of data sources maintained and update the details.
<b>DataSource Driver</b>	Specify the <b>JDBC driver URL</b> with which the connection is to be established. Ex: oracle.jdbc.OracleDriver for Non-XA datasources
<b>DataSource Type</b>	Specify the type of datasource that is to be created, XA or Non-XA.
<b>Schema Username</b>	Specify the username of the schema to which the connection is to be established.
<b>Schema Password</b>	Specify the password of the schema.
<b>IP Address</b>	Specify the host address of the schema.
<b>Port Number</b>	Specify the port number of schema.
<b>Service Name</b>	Specify the service name of schema.

**Table 1-8 (Cont.) Resource details**

Field	Description
<b>Initial Capacity</b>	It is the number of physical connections that can be created when creating the connection pool in the data source
<b>Maximum Capacity</b>	The maximum number of physical connections that this connection pool can contain.
<b>Capacity Increment</b>	The increment by which this JDBC connection pool's capacity is expanded.
<b>Shrink Frequency</b>	The number of seconds to wait before shrinking a connection pool that has incrementally increased to meet demand.
<b>Connection Reserve Timeout</b>	The number of seconds after which a call to reserve a connection from the connection pool will timeout.

18. Click **Test Connection** to establish connection with required details provided in the table against corresponding value of **Resource ID**.
19. Click **Save Changes** to save the values provided in the table against corresponding value of **Resource ID**.
20. Select **Modify JDBC Url** to modify the provided JDBC url.

If **Modify JDBC Url** is selected, the following screen is displayed.

**Figure 1-26 JDBC Url**

Oracle FLEXCUBE Universal Installer

**Oracle FLEXCUBE Investor Servicing** ORACLE

**JDBC Url**  
JDBC url to get connected to the Application server

Resource ID

jdbc:oracle:thin:@10.10.10.10:1234:Test

Test Connection Save Changes

Log Back Next Exit

21. Specify **Resource ID** and click **Test Connection** to check the connection using the changed Url. If the Url changed is correct, then the successful connection will be made. Click **Save Changes** to save the changed JDBC Url.

**Resource ID:** It provides the list of all the datasources created. Select the data source for which the **JDBC Url** needs to be modified.

**Note:** The **JDBC Url** generated from the previous screen will be displayed here. If the user wants to change the **JDBC Url**, it can be changed in the current screen.

22. Specify Server Environment details for deployment.

The **Domain Name** shows the weblogic domain name.

23. On Server Environment details screen, click **Get Details** button.

The list of available servers are displayed. Atleast, one server should be selected to proceed.

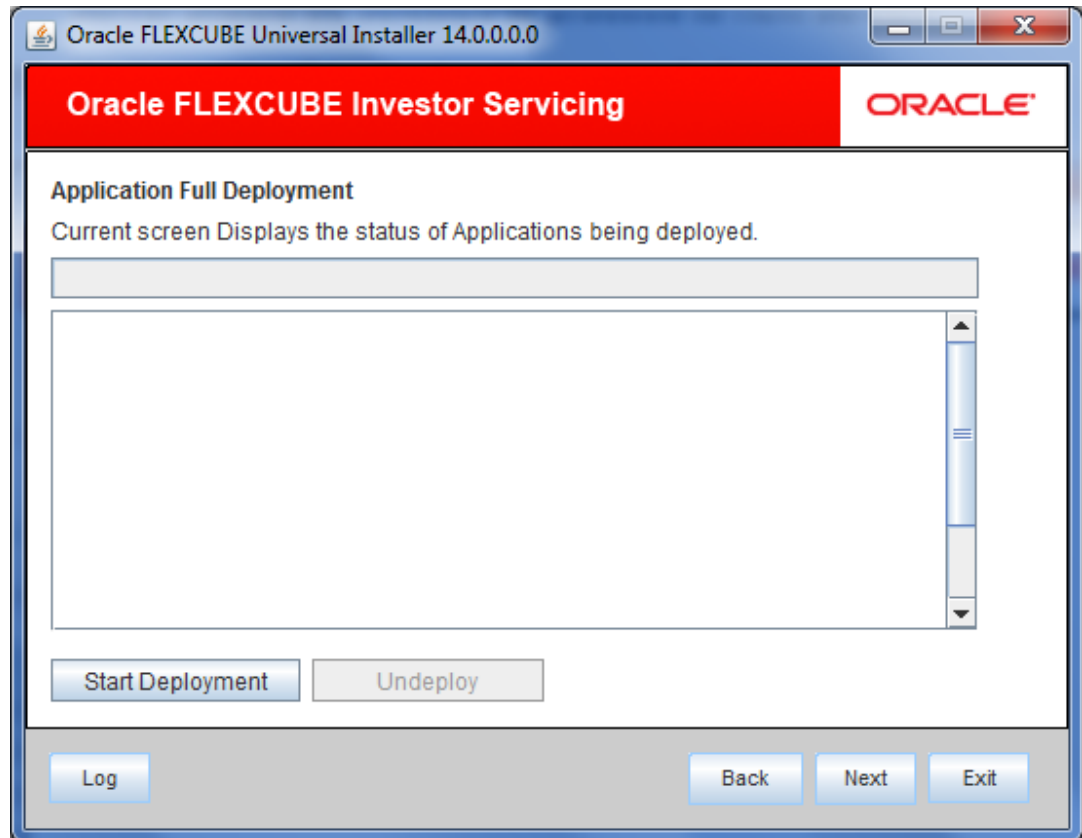
**Figure 1-27 Server Environment Details for Full Deployment**

S.No.	Server Name	Deploy
1	AdminServer	<input type="checkbox"/>
2	ManagedServer	<input type="checkbox"/>
3	ClusterTest	<input type="checkbox"/>
4	AVAST	<input type="checkbox"/>

24. Click **Next** after the server environment details are specified.

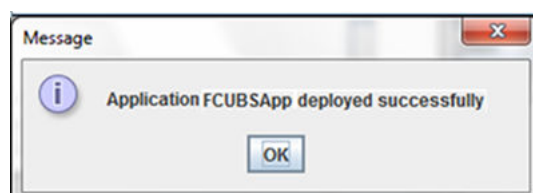
The following screen is displayed.

**Figure 1-28 Application Deployment Status for Full Deployment**

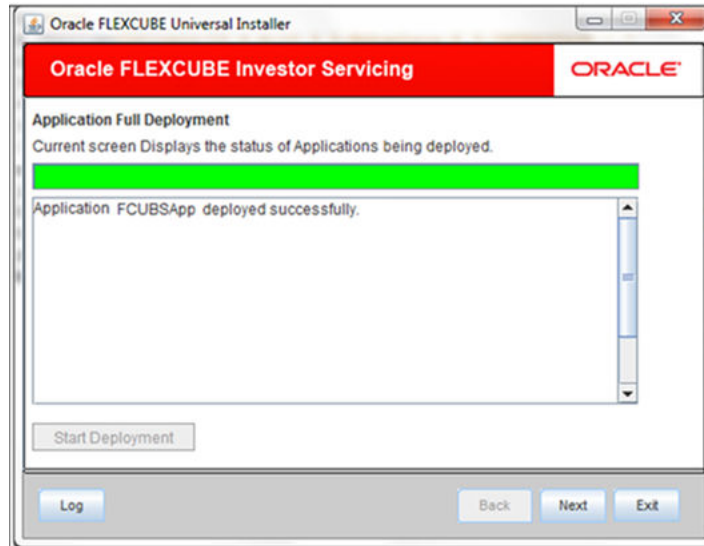


25. Click **Start Deployment** to start the process of application deployment.  
The following screen displays the status of Applications being deployed.

**Figure 1-29 Application FCUBSApp deployed successfully**



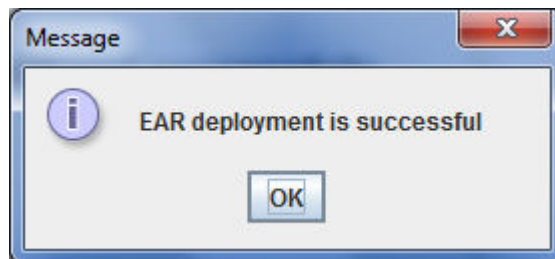
**Figure 1-30 Start Application Full Deployment**



26. You can view the information message on successful deployment and click **Ok** in the **Message** window.

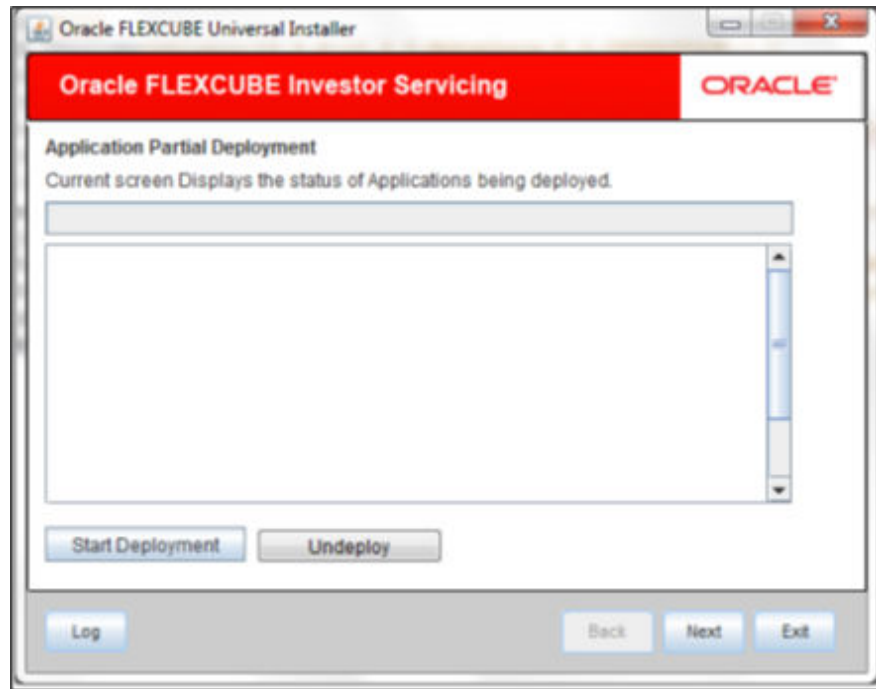
The following **Message** window is displayed.

**Figure 1-31 EAR Deployment Message**



27. Click **Undeploy** button for undeploying the partially deployed EAR from the server.  
If the deployment is not successful, the **Undeploy** button will be enabled in the **Application Deployment** status screen.

**Figure 1-32 Undeploy**



## 1.3 Gateway HTTP Servlet Application Full Deployment

This topic describes the steps to install Gateway HTTP Servlet Application into weblogic server in full deployment mode.

1. Start **Oracle FLEXCUBE Universal Installer**.

The **Oracle FLEXCUBE Universal Installer** is displayed.

**Figure 1-33 Oracle FLEXCUBE Universal Installer**

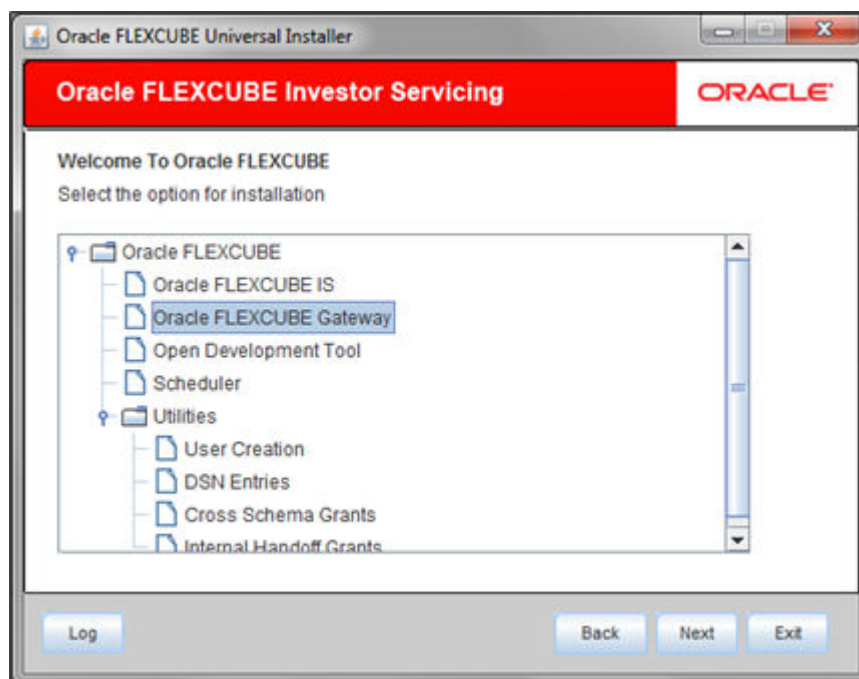
2. On **Oracle FLEXCUBE Universal Installer** screen, enter the following details.  
Refer to the table for JDK and Oracle Home path.

**Table 1-9 JDK and Oracle Home path**

Field	Description
<b>JDK Path</b>	Provide Home folder path of JDK1.8.
<b>Oracle Home</b>	Provide home folder path of Oracle Client or Database.
<b>Application Server Home</b>	Provide home folder path of Application Server.
<b>Application Server Location</b>	Select location of the application server either local or remote.

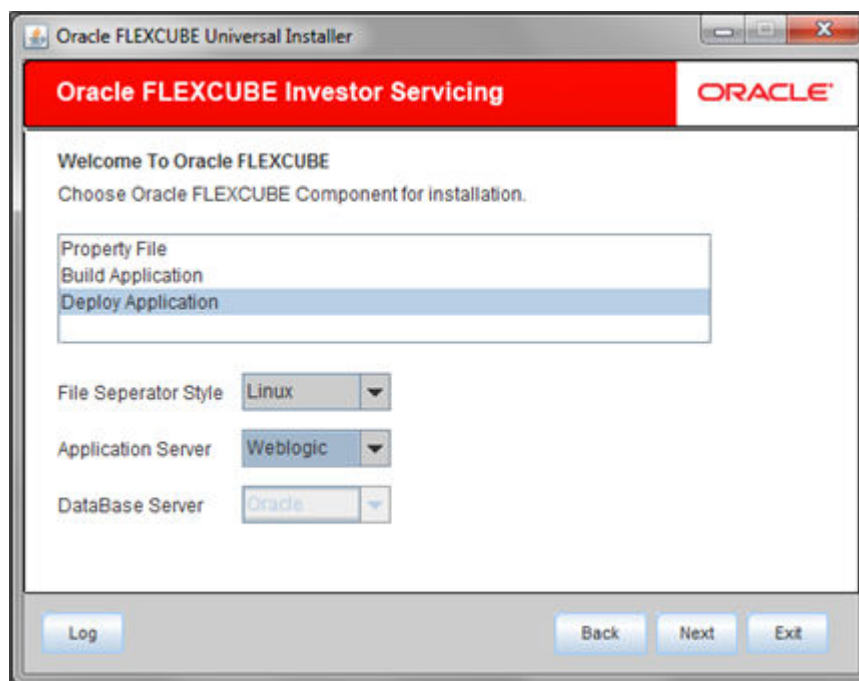
3. Click **Next** to select the option for installation.
4. Select **Oracle FLEXCUBE Gateway** from the lists of **Oracle FLEXCUBE** options.  
The available options for installation are displayed.

Figure 1-34 Select Oracle FLEXCUBE Gateway



5. Click **Next** to choose **Oracle FLEXCUBE** component for installation.
6. Select **Deploy Application**.

Figure 1-35 Select Deploy Application

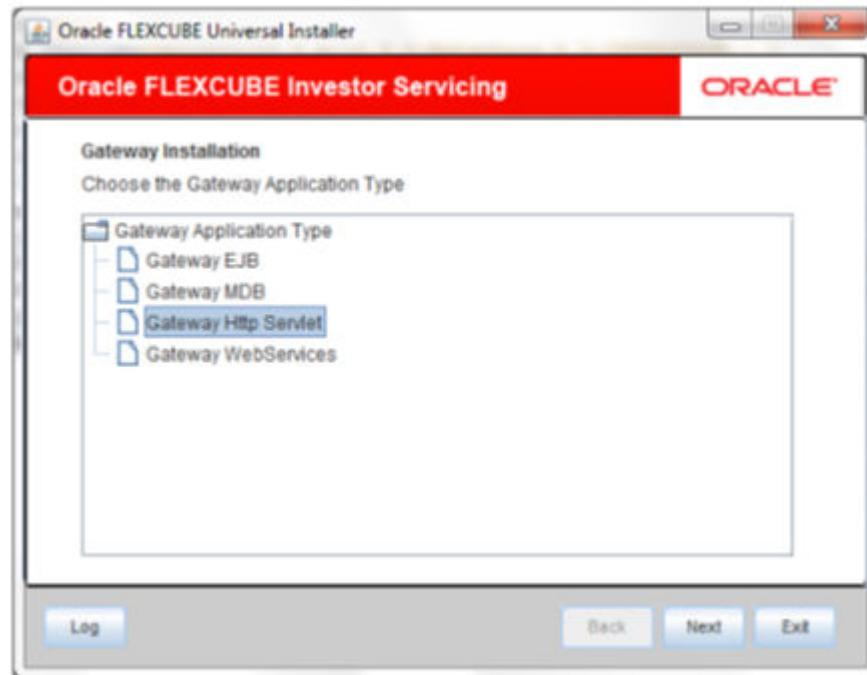


7. Choose the appropriate server's **Operating System** from the drop-down.
8. Choose **Weblogic** from the application server drop-down.
9. Click **Next** and select **Gateway Http Servlet** from the **Gateway Application Type**.



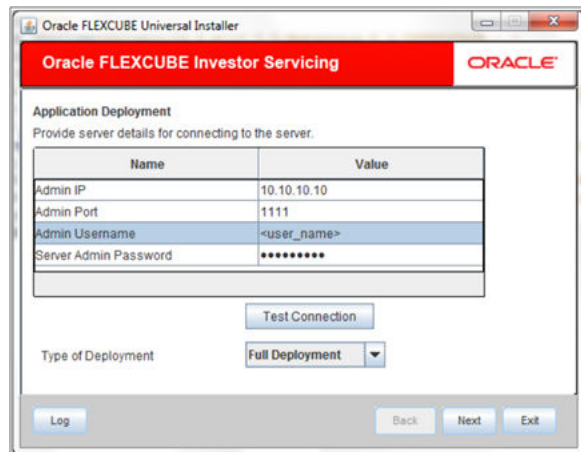
The screen displays the selected Gateway Application Type.

**Figure 1-36 Gateway Application Type\_Gateway Http Servlet**



10. Specify Server details to connect to the server and click **Next**.

**Figure 1-37 Gateway Application Type\_Gateway EJB\_Server**



Refer to the table for server details.

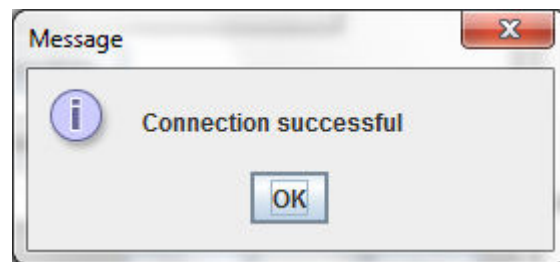
**Table 1-10 Server details**

Field	Description
<b>Admin IP</b>	Provide host address of Admin server.
<b>Admin Port</b>	Provide port number of Weblogic server.
<b>Admin UserName</b>	Provide the appropriate Admin Username of the Weblogic Application server.
<b>Admin Password</b>	Provide the appropriate Admin Password of the Weblogic Application server.
<b>Type of Deployment</b>	Choose <b>Full Deployment</b> .

11. Click **Test Connection** to test the connection with the Application server.

On successful connection, the following message is displayed.

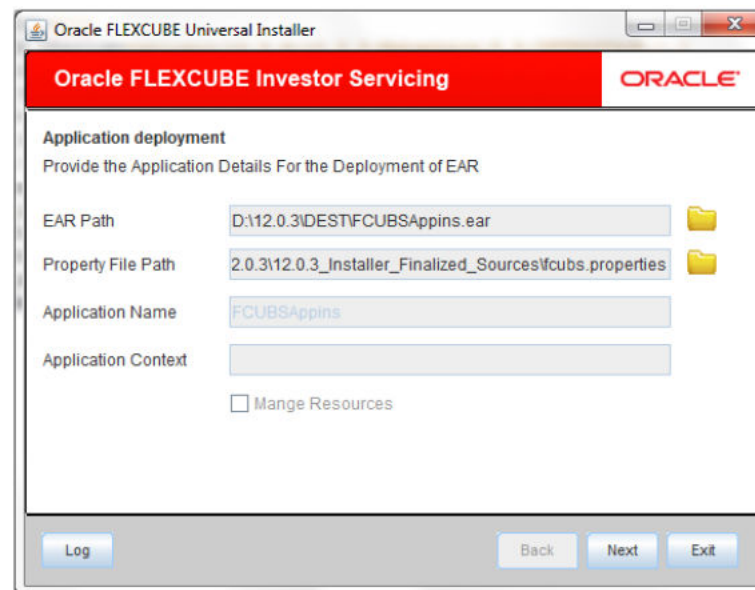
**Figure 1-38 Information Message on Successful Connection**



12. Click **Ok** and click **Next** in the installer.

The following screen is displayed.

**Figure 1-39 Application Details for Full Deployment**



13. Specify Application details to deploy the EAR.

Refer to the table for Application details.

**Table 1-11 Application details**

Field	Description
<b>EAR Path</b>	Select the application EAR to be deployed using the browse button. <b>Note:</b> The Application EAR path cannot be copied and pasted on to the text box, thereby demanding the use of the <b>Browse</b> button to select the EAR.
<b>Property File Path</b>	Select the appropriate path to the external properties file. If the properties file is internal to the application EAR, it would be fetched on selection of the EAR and will be in a non-editable state.
<b>Application Name</b>	This field is not applicable.
<b>Application Context</b>	This field is not applicable.
<b>Manage Resources</b>	This field is not supported.

14. Click **Next** to specify Server Environment details for deployment.

The **Domain Name** shows the weblogic domain name.

15. On Server Environment details screen, click **Get Details** button.

The list of available servers are displayed. Atleast, one server should be selected to proceed.

**Figure 1-40 Server Environment Details for Full Deployment**

Oracle FLEXCUBE Universal Installer

**Oracle FLEXCUBE Investor Servicing** ORACLE

**Application Full Deployment**

Specify Server environment details for deployment

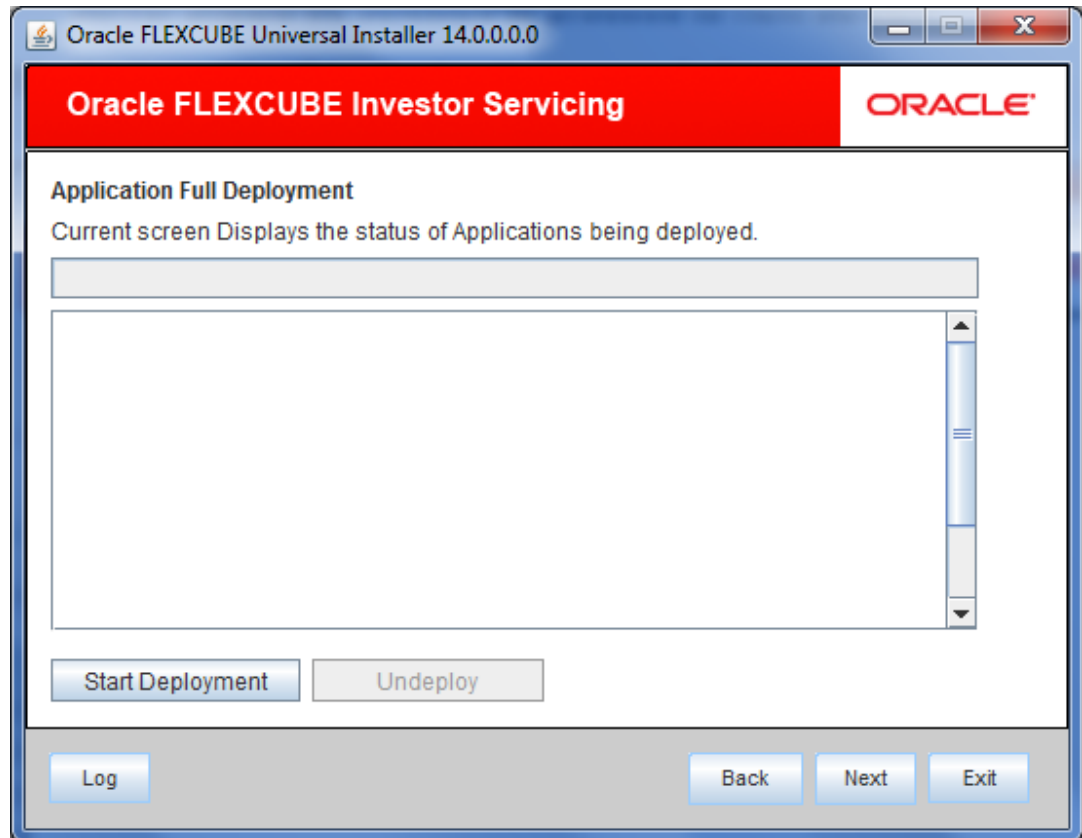
Domain Name:

S.No.	Server Name	Deploy
1	AdminServer	<input type="checkbox"/>
2	ManagedServer	<input type="checkbox"/>
3	ClusterTest	<input type="checkbox"/>
4	AVAST	<input type="checkbox"/>

16. Click **Next** after the server environment details are specified.

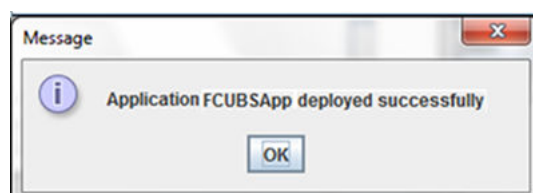
The following screen is displayed.

**Figure 1-41 Application Deployment Status for Full Deployment**

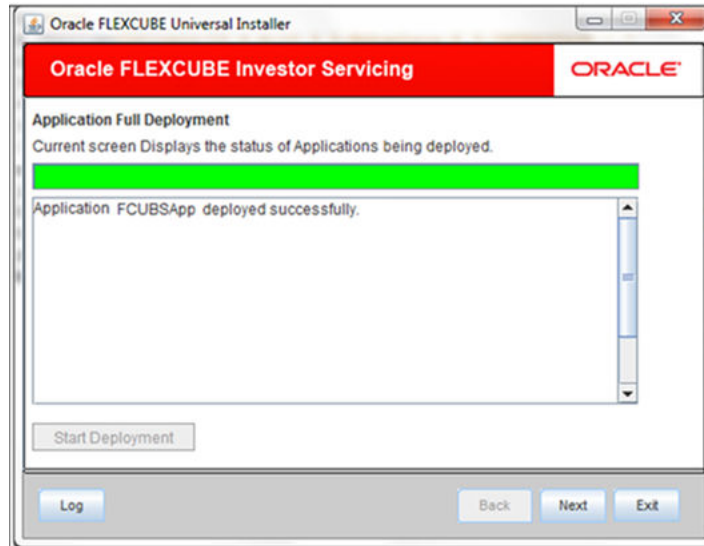


17. Click **Start Deployment** to start the process of application deployment.  
The following screen displays the status of Applications being deployed.

**Figure 1-42 Application FCUBSApp deployed successfully**



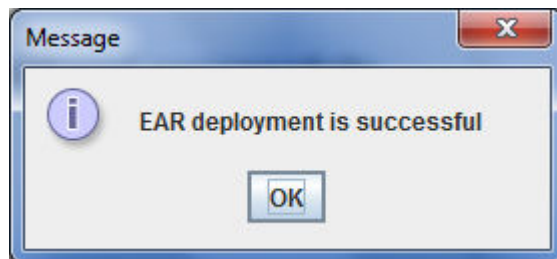
**Figure 1-43 Start Application Full Deployment**



18. You can view the information message on successful deployment and click **Ok** in the **Message** window.

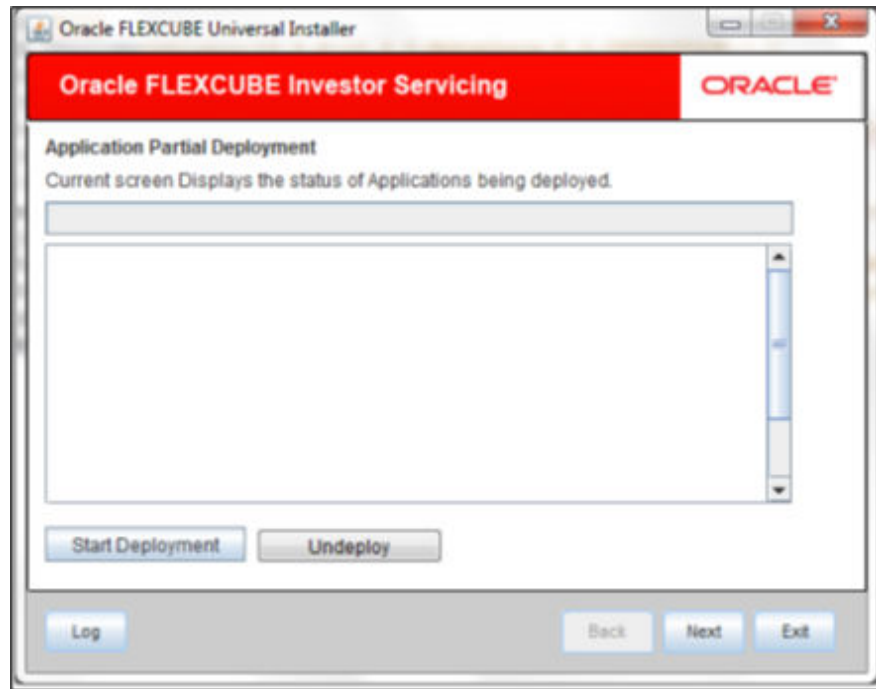
The following **Message** window is displayed.

**Figure 1-44 EAR Deployment Message**



19. Click **Undeploy** button for undeploying the partially deployed EAR from the server.  
If the deployment is not successful, the **Undeploy** button will be enabled in the **Application Deployment** status screen.

**Figure 1-45 Undeploy**



## 1.4 Gateway Webservices Application Full Deployment

This topic describes the steps to install Gateway Webservices Application into weblogic server in full deployment mode.

1. Start **Oracle FLEXCUBE Universal Installer**.

The **Oracle FLEXCUBE Universal Installer** is displayed.

**Figure 1-46 Oracle FLEXCUBE Universal Installer**

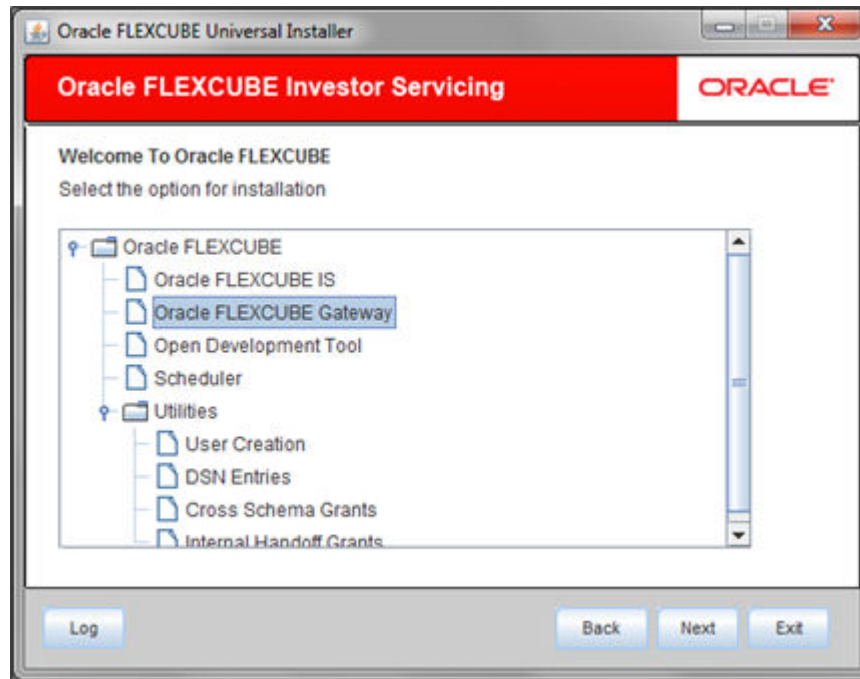
2. On **Oracle FLEXCUBE Universal Installer** screen, enter the following details.  
Refer to the table for JDK and Oracle Home path.

**Table 1-12 JDK and Oracle Home path**

Field	Description
<b>JDK Path</b>	Provide Home folder path of JDK1.8.
<b>Oracle Home</b>	Provide home folder path of Oracle Client or Database.
<b>Application Server Home</b>	Provide home folder path of Application Server.
<b>Application Server Location</b>	Select location of the application server either local or remote.

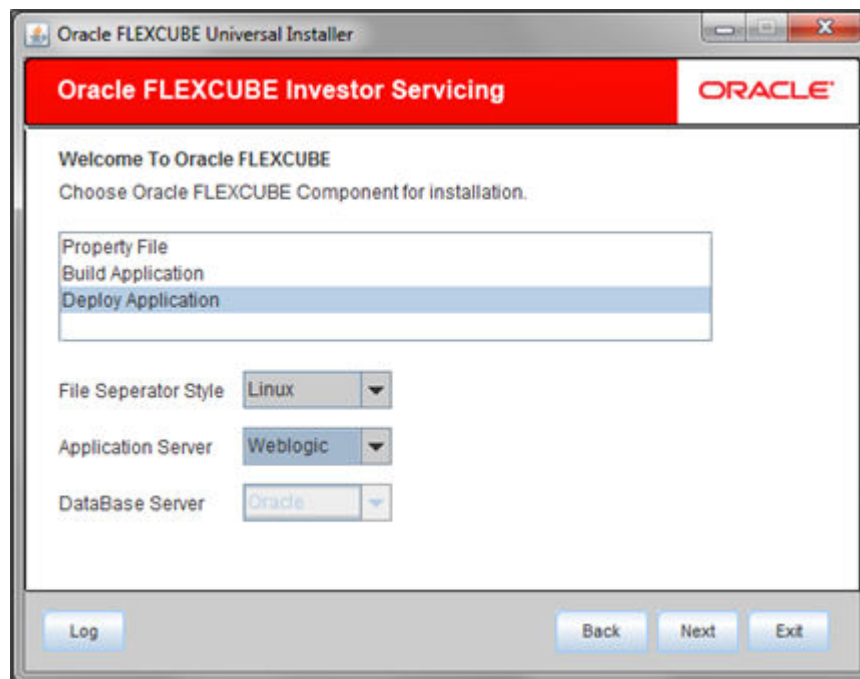
3. Click **Next** to select the option for installation.
4. Select **Oracle FLEXCUBE Gateway** from the lists of **Oracle FLEXCUBE** options.  
The available options for installation are displayed.

Figure 1-47 Select Oracle FLEXCUBE Gateway



5. Click **Next** to choose **Oracle FLEXCUBE** component for installation.
6. Select **Deploy Application**.

Figure 1-48 Select Deploy Application

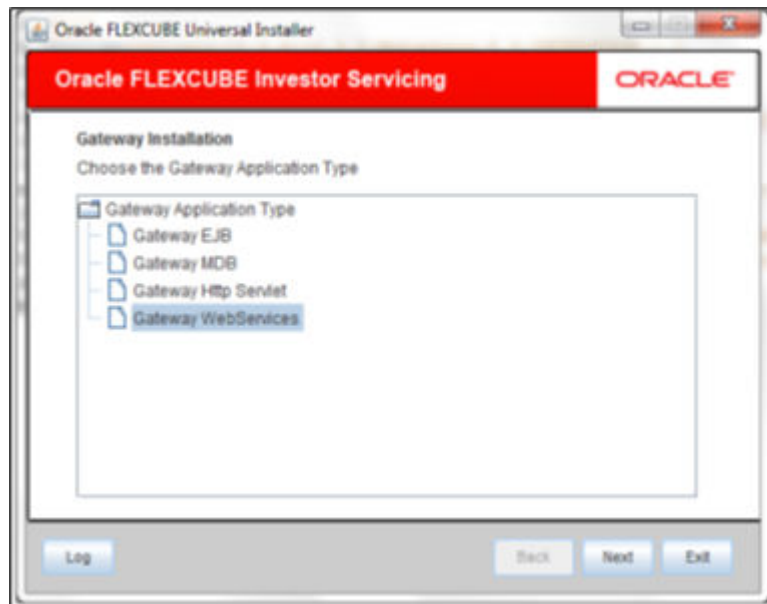


7. Choose the appropriate server's **Operating System** from the drop-down.
8. Choose **Weblogic** from the application server drop-down.
9. Click **Next** and select **Gateway WebServices** from the **Gateway Application Type**.



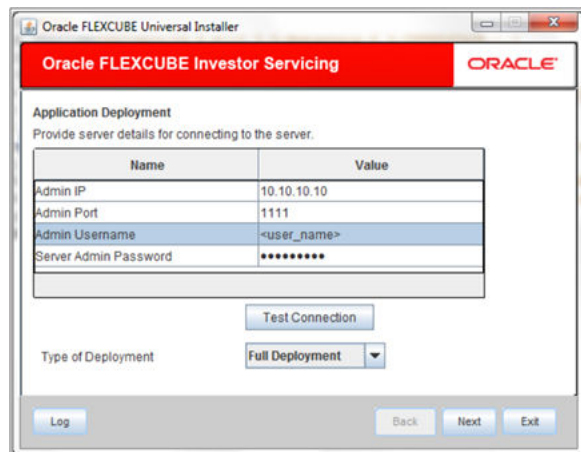
The screen displays the selected Gateway Application Type.

**Figure 1-49 Gateway Application Type\_Gateway WebServices**



10. Specify Server details to connect to the server and click **Next**.

**Figure 1-50 Gateway Application Type\_Gateway EJB\_Server**



Refer to the table for server details.

**Table 1-13 Server details**

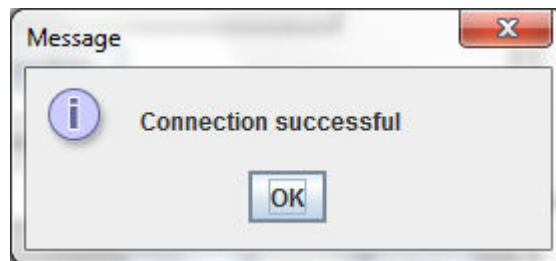
Field	Description
<b>Admin IP</b>	Provide host address of Admin server.
<b>Admin Port</b>	Provide port number of Weblogic server.

**Table 1-13 (Cont.) Server details**

Field	Description
<b>Admin UserName</b>	Provide the appropriate Admin Username of the Weblogic Application server.
<b>Admin Password</b>	Provide the appropriate Admin Password of the Weblogic Application server.
<b>Type of Deployment</b>	Choose <b>Full Deployment</b> .

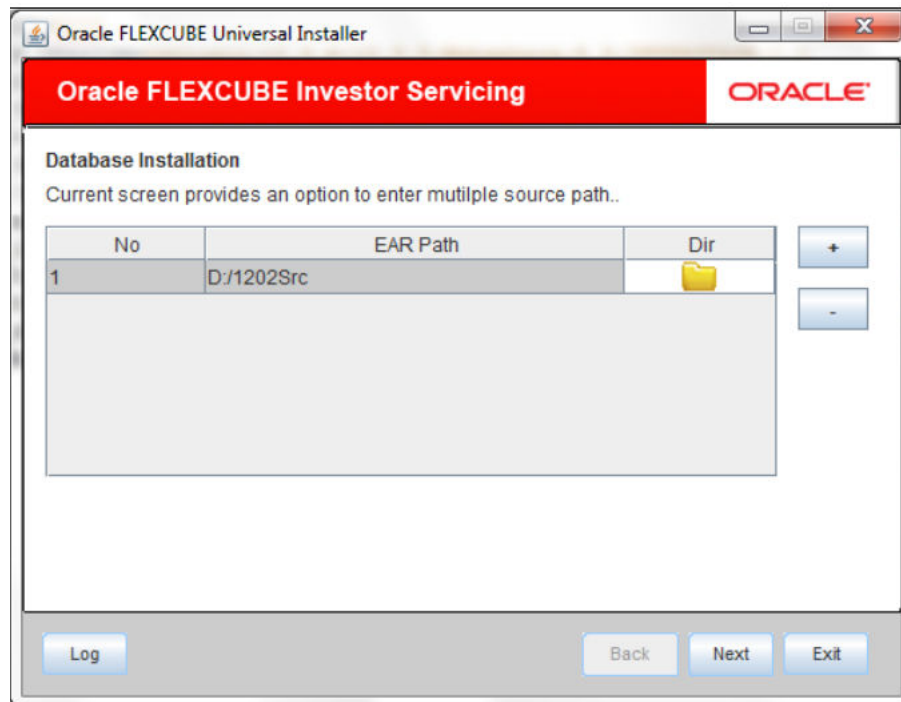
11. Click **Test Connection** to test the connection with the Application server.  
On successful connection, the following message is displayed.

**Figure 1-51 Information Message on Successful Connection**



12. Click **Ok** and click **Next** in the installer.  
The following screen is displayed.

**Figure 1-52 Application Details for Full Deployment**



13. Specify Application details to deploy the EAR.  
Refer to the table for Application details.

**Table 1-14 Application details**

Field	Description
<b>EAR Path</b>	Select the application EAR to be deployed using the browse button. <b>Note:</b> The Application EAR path cannot be copied and pasted on to the text box, thereby demanding the use of the <b>Browse</b> button to select the EAR.
<b>Property File Path</b>	Select the appropriate path to the external properties file. If the properties file is internal to the application EAR, it would be fetched on selection of the EAR and will be in a non-editable state.
<b>Application Name</b>	This field is not applicable.
<b>Application Context</b>	This field is not applicable.
<b>Manage Resources</b>	This field is not supported.

14. Click **Next** to specify Server Environment details for deployment.

The **Domain Name** shows the weblogic domain name.

15. On Server Environment details screen, click **Get Details** button.

The list of available servers are displayed. Atleast, one server should be selected to proceed.

**Figure 1-53 Server Environment Details for Full Deployment**

Oracle FLEXCUBE Universal Installer

**Oracle FLEXCUBE Investor Servicing** ORACLE

**Application Full Deployment**

Specify Server environment details for deployment

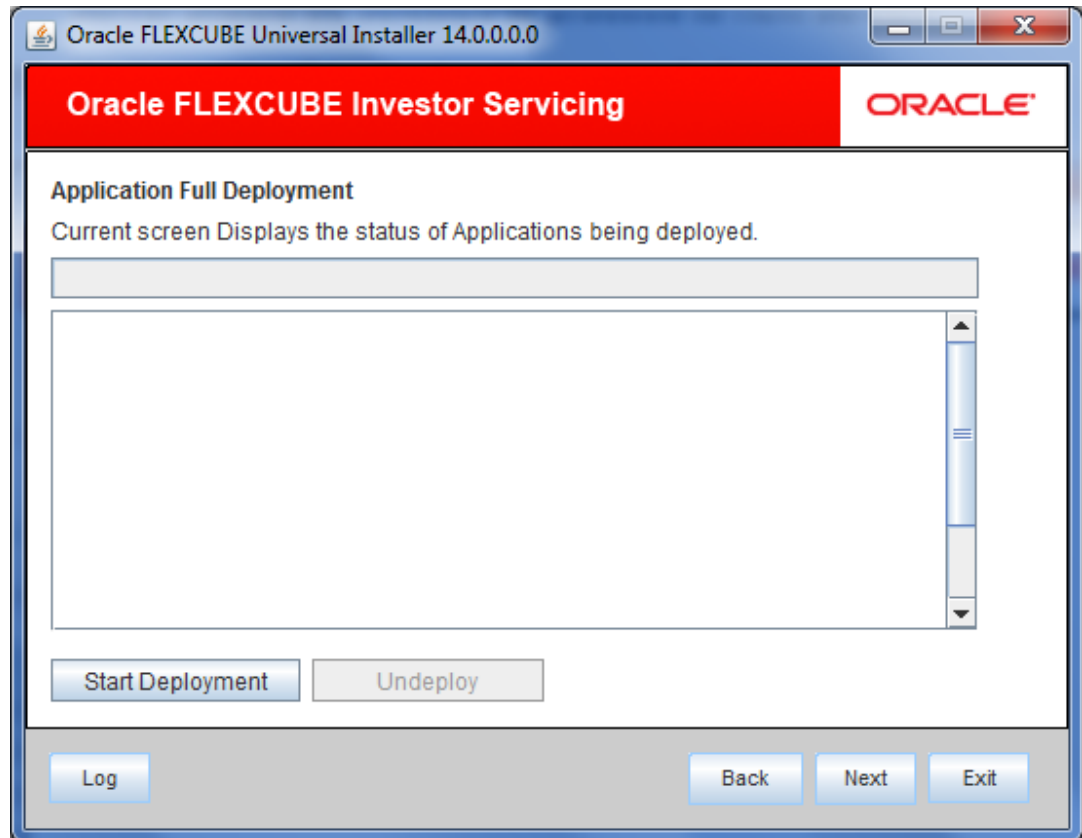
Domain Name:

S.No.	Server Name	Deploy
1	AdminServer	<input type="checkbox"/>
2	ManagedServer	<input type="checkbox"/>
3	ClusterTest	<input type="checkbox"/>
4	AVAST	<input type="checkbox"/>

16. Click **Next** after the server environment details are specified.

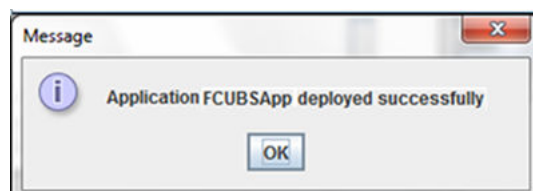
The following screen is displayed.

**Figure 1-54 Application Deployment Status for Full Deployment**

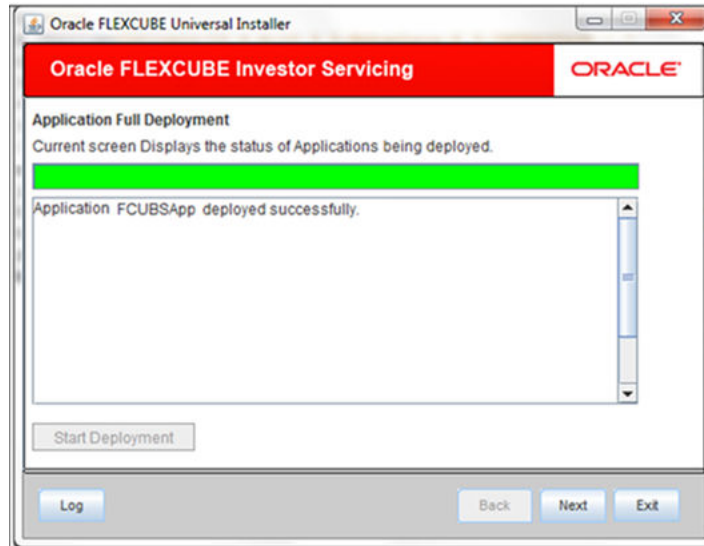


17. Click **Start Deployment** to start the process of application deployment.  
The following screen displays the status of Applications being deployed.

**Figure 1-55 Application FCUBSApp deployed successfully**



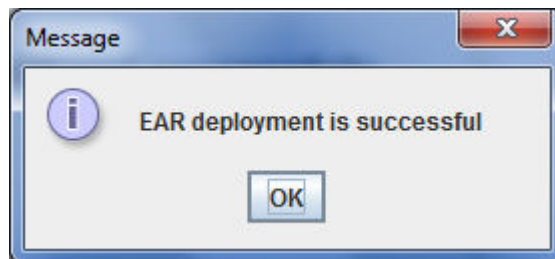
**Figure 1-56 Start Application Full Deployment**



18. You can view the information message on successful deployment and click **Ok** in the **Message** window.

The following **Message** window is displayed.

**Figure 1-57 EAR Deployment Message**



19. Click **Undeploy** button for undeploying the partially deployed EAR from the server.  
If the deployment is not successful, the **Undeploy** button will be enabled in the **Application Deployment** status screen.

**Figure 1-58 Undeploy**

