

Oracle® FLEXCUBE Investor Servicing

Setting up Oracle FLEXCUBE Investor Servicing Installer



Release 14.7.7.0.0
G33229-01
April 2025

ORACLE®

Copyright © 2007, 2025, Oracle and/or its affiliates.

This software and related documentation are provided under a license agreement containing restrictions on use and disclosure and are protected by intellectual property laws. Except as expressly permitted in your license agreement or allowed by law, you may not use, copy, reproduce, translate, broadcast, modify, license, transmit, distribute, exhibit, perform, publish, or display any part, in any form, or by any means. Reverse engineering, disassembly, or decompilation of this software, unless required by law for interoperability, is prohibited.

The information contained herein is subject to change without notice and is not warranted to be error-free. If you find any errors, please report them to us in writing.

If this is software, software documentation, data (as defined in the Federal Acquisition Regulation), or related documentation that is delivered to the U.S. Government or anyone licensing it on behalf of the U.S. Government, then the following notice is applicable:

U.S. GOVERNMENT END USERS: Oracle programs (including any operating system, integrated software, any programs embedded, installed, or activated on delivered hardware, and modifications of such programs) and Oracle computer documentation or other Oracle data delivered to or accessed by U.S. Government end users are "commercial computer software," "commercial computer software documentation," or "limited rights data" pursuant to the applicable Federal Acquisition Regulation and agency-specific supplemental regulations. As such, the use, reproduction, duplication, release, display, disclosure, modification, preparation of derivative works, and/or adaptation of i) Oracle programs (including any operating system, integrated software, any programs embedded, installed, or activated on delivered hardware, and modifications of such programs), ii) Oracle computer documentation and/or iii) other Oracle data, is subject to the rights and limitations specified in the license contained in the applicable contract. The terms governing the U.S. Government's use of Oracle cloud services are defined by the applicable contract for such services. No other rights are granted to the U.S. Government.

This software or hardware is developed for general use in a variety of information management applications. It is not developed or intended for use in any inherently dangerous applications, including applications that may create a risk of personal injury. If you use this software or hardware in dangerous applications, then you shall be responsible to take all appropriate fail-safe, backup, redundancy, and other measures to ensure its safe use. Oracle Corporation and its affiliates disclaim any liability for any damages caused by use of this software or hardware in dangerous applications.

Oracle®, Java, MySQL, and NetSuite are registered trademarks of Oracle and/or its affiliates. Other names may be trademarks of their respective owners.

Intel and Intel Inside are trademarks or registered trademarks of Intel Corporation. All SPARC trademarks are used under license and are trademarks or registered trademarks of SPARC International, Inc. AMD, Epyc, and the AMD logo are trademarks or registered trademarks of Advanced Micro Devices. UNIX is a registered trademark of The Open Group.

This software or hardware and documentation may provide access to or information about content, products, and services from third parties. Oracle Corporation and its affiliates are not responsible for and expressly disclaim all warranties of any kind with respect to third-party content, products, and services unless otherwise set forth in an applicable agreement between you and Oracle. Oracle Corporation and its affiliates will not be responsible for any loss, costs, or damages incurred due to your access to or use of third-party content, products, or services, except as set forth in an applicable agreement between you and Oracle.

Contents

Preface

Purpose	iv
Audience	iv
Documentation Accessibility	iv
Critical Patches	v
Diversity and Inclusion	v
Conventions	v
Screenshot Disclaimer	v
Acronyms and Abbreviations	v

1 Set up Oracle FLEXCUBE Investor Servicing Installer

1.1	Run Oracle FLEXCUBE Installer on Windows	1-2
1.2	Run Oracle FLEXCUBE Installer on LINUX	1-6
1.2.1	Log in PuTTY	1-6
1.2.2	Run Oracle FLEXCUBE Installer through XManager	1-8
1.3	Run Oracle FLEXCUBE Installer in Silent Mode	1-12
1.3.1	Run Oracle FLEXCUBE Installer in Silent Mode in Windows	1-13
1.3.2	Run Oracle FLEXCUBE Installer in Silent Mode in LINUX	1-14

Preface

Oracle FLEXCUBE Investor Servicing is a comprehensive mutual funds automation software from Oracle® Financial Servicing Software Ltd.©.

You can use the system to achieve optimum automation of all your mutual fund investor servicing processes, as it provides guidelines for specific tasks, descriptions of various features and processes, and general information.

This topic contains the following sub-topics:

- [Purpose](#)
- [Audience](#)
- [Documentation Accessibility](#)
- [Critical Patches](#)
- [Diversity and Inclusion](#)
- [Conventions](#)
- [Screenshot Disclaimer](#)
- [Acronyms and Abbreviations](#)

Purpose

This manual is designed to help acquaint you with the installation of **Oracle FLEXCUBE Investor Servicing** application.

Audience

This manual is intended for the following User/User Roles:

Table 1 Users and Roles

Users	Roles
Implementation team	Implementation of Oracle FLEXCUBE Investor Servicing
Presales team	Install Oracle FLEXCUBE Investor Servicing for demo purpose
Bank personnel	Who installs Oracle FLEXCUBE Investor Servicing

Documentation Accessibility

For information about Oracle's commitment to accessibility, visit the Oracle Accessibility Program website at <http://www.oracle.com/pls/topic/lookup?ctx=acc&id=docacc>.

Access to Oracle Support

Oracle customer access to and use of Oracle support services will be pursuant to the terms and conditions specified in their Oracle order for the applicable services.

Critical Patches

Oracle advises customers to get all their security vulnerability information from the Oracle Critical Patch Update Advisory, which is available at [Critical Patches, Security Alerts and Bulletins](#). All critical patches should be applied in a timely manner to ensure effective security, as strongly recommended by [Oracle Software Security Assurance](#).

Diversity and Inclusion

Oracle is fully committed to diversity and inclusion. Oracle respects and values having a diverse workforce that increases thought leadership and innovation. As part of our initiative to build a more inclusive culture that positively impacts our employees, customers, and partners, we are working to remove insensitive terms from our products and documentation. We are also mindful of the necessity to maintain compatibility with our customers' existing technologies and the need to ensure continuity of service as Oracle's offerings and industry standards evolve. Because of these technical constraints, our effort to remove insensitive terms is ongoing and will take time and external cooperation.

Conventions

The following text conventions are used in this document:

Convention	Meaning
boldface	Boldface type indicates graphical user interface elements associated with an action, or terms defined in text or the glossary.
<i>italic</i>	Italic type indicates book titles, emphasis, or placeholder variables for which you supply particular values.
<code>monospace</code>	Monospace type indicates commands within a paragraph, URLs, code in examples, text that appears on the screen, or text that you enter.

Screenshot Disclaimer

Personal information used in the interface or documents is dummy and does not exist in the real world. It is only for reference purposes.

Acronyms and Abbreviations

The list of the acronyms and abbreviations used are as follows:

Table 2 Acronyms and Abbreviations

Abbreviation	Description
FCIS	Oracle FLEXCUBE Investor Servicing
OEM	Oracle Enterprise Manager

Table 2 (Cont.) Acronyms and Abbreviations

Abbreviation	Description
EMS	Electronic Messaging Service
EJB	Enterprise Java Bean
MDB	Message Driven Beans

1

Set up Oracle FLEXCUBE Investor Servicing Installer

This topic explains the process of setting up the Oracle FLEXCUBE Investor Servicing installer.

Before installing the **Oracle FLEXCUBE Investor Servicing**, set up Oracle FLEXCUBE Installer on the server.

The Oracle FLEXCUBE Installer picks up the source files from the Source Directory and builds the enterprise archive file. The enterprise archive file is then deployed on the Application Server using the Application Server Admin console.

Scope of Installer

Table 1-1 Applications and Mandatory Installer Components

Applications	Descriptions	Mandatory Installer Components
Building Application	Application building describes the process of creating property file with the required plug-ins and corresponding plug-in related properties. It also explains the process of building an application.	JDK Path
Deploying Application	Application deployment will create the resources in the selected application server and deploy the selected application in the application server. Deploying application in weblogic will create the resources required for the deployment of an application in the weblogic server and deploy the selected application in the weblogic.	JDK PATH Application Sever Home
Database	This topic describes the basic instructions for setting up the database, it explains the steps for Preparing schema from Baseline, compiling objects, loading static data setup and it also explains the step by step instructions for running Basic setup. It also explains the steps for Preparing schema from Baseline and loading data from dump and also explains the instructions for compiling objects and loading static data and imp dump	JDK Path Oracle Home

- [Run Oracle FLEXCUBE Installer on Windows](#)
This topic provides the systematic instructions to run the Oracle FELXCUBE Installer on windows.

- [Run Oracle FLEXCUBE Installer on LINUX](#)
This topic describes the method to run Oracle FLEXCUBE Installer on LINUX system.
- [Run Oracle FLEXCUBE Installer in Silent Mode](#)
This topic describes the method to run Oracle FLEXCUBE Installer in silent mode.

1.1 Run Oracle FLEXCUBE Installer on Windows

This topic provides the systematic instructions to run the Oracle FLEXCUBE Installer on windows.

To run the Oracle FLEXCUBE Installer on Windows, follow the steps below:

1. Open the installer by double clicking on the **FCUBSInstaller.bat** from the installer source file.

A prompt is displayed to enter the **Java Home Path**.

Figure 1-1 Java Home Path

```

C:\Windows\system32\cmd.exe
Flex Cube UBS : Release 12.2.0.0.0 - Production on 19:15:17.74 Tue 09/27/2016
Copyright (c) 2016, Oracle Financial Services Software Ltd. All rights reserved.

Checking the write permissions.....
checking whether Installer is running.....
Creating a new flag file.....
sucessfully created the flag File.

Initializing the errorLevel to 0

Checking Java Home.....
Please input Java path [Example: c:\Software\Java\jdk1.8.0_91
#####JAVAHOME NOT DEFINED#####
Enter JAVA HOME Directory:c:\Software\Java\jdk1.8.0_91
JAVA_HOME has been set
Initializing the errorLevel to 0

Checking Java Home.....
Java Home Path has been set sucessfully.

#####ORACLE HOME NOT DEFINED###
Enter Oracle Home Directory:c:\Software\Oracle12c\product\12.1.0\dbhome_1
Oracle Home set
Oracle Home set sucesfully
Clearing the compiled files.....
Clearing the jar file.
Jar to be copied from c:\Software\Oracle12c\product\12.1.0\dbhome_1\jdbc\lib\ojd
bc6.jar
Copying jars into the Library...
1 file(s) copied.

Checking logs Folder.....
--Current Folder--
--avast--
this InstallationShipment "EXEC"
Inside Checking APPSERVER HOME.....
appserverhome

#####APPSERVER HOME NOT DEFINED#####
Enter APPSERVER HOME Directory:c:\Software\Weblogic12211\wlserver_

```

2. Enter the **Java Home Path** and press the **Enter** key.

This is a mandatory field, and the value entered is validated. Refer *Release Notes* for valid JDK version.

A prompt is displayed to enter the **ORACLE Home Path**.

Figure 1-2 ORACLE Home Path

```

C:\Windows\system32\cmd.exe

Flex Cube UBS : Release 12.2.0.0.0 - Production on 19:15:17.74 Tue 09/27/2016
Copyright (c) 2016, Oracle Financial Services Software Ltd. All rights reserved.

Checking the write permissions.....
checking whether Installer is running.....
Creating a new flag file.....
sucessfully created the flag File.

Initializing the errorLevel to 0

Checking Java Home.....
Please input Java path [Example: c:\Software\Java\jdk1.8.0_91
#####JAVAHOME NOT DEFINED#####
Enter JAVA HOME Directory:c:\Software\Java\jdk1.8.0_91
JAVA_HOME has been set
Initializing the errorLevel to 0

Checking Java Home.....
Java Home Path has been set sucessfully.

#####ORACLE HOME NOT DEFINED#####
Enter Oracle Home Directory:c:\Software\Oracle12c\product\12.1.0\dbhome_1
Oracle Home set
Oracle Home set sucesfully
Clearing the compiled files.....
Clearing the jar file.
Jar to be copied from c:\Software\Oracle12c\product\12.1.0\dbhome_1\jdbc\lib\ojd
bc6.jar
Copying jars into the Library...
1 file(s) copied.

Checking logs Folder.....
--Current Folder--
--avast--
this InstallationShipment "EXEC"
Inside Checking APPSERVER HOME.....
appserverhome

#####APPSEVER HOME NOT DEFINED#####
Enter APPSEVER HOME Directory:c:\Software\Weblogic12211\wlserver_
  
```

3. Enter the **ORACLE Home Path** and press the **Enter** key.

This is an optional field, and the value entered is not validated.

A prompt is displayed to enter the **Application Server Home Path**.

Figure 1-3 Application Server Home Path

```

C:\Windows\system32\cmd.exe
Flex Cube UBS : Release 12.2.0.0.0 - Production on 19:15:17.74 Tue 09/27/2016
Copyright (c) 2016, Oracle Financial Services Software Ltd. All rights reserved.

Checking the write permissions.....
checking whether Installer is running.....
Creating a new flag file.....
sucessfully created the flag File.

Initializing the errorLevel to 0

Checking Java Home.....
Please input Java path [Example: c:\Software\Java\jdk1.8.0_91
#####JAVAHOME NOT DEFINED#####
Enter JAVA HOME Directory:c:\Software\Java\jdk1.8.0_91
JAVA_HOME has been set
Initializing the errorLevel to 0

Checking Java Home.....
Java Home Path has been set sucessfully.

#####ORACLE HOME NOT DEFINED#####
Enter Oracle Home Directory:c:\Software\Oracle12c\product\12.1.0\dbhome_1
Oracle Home set
Oracle Home set sucesfully
Clearing the compiled files.....
Clearing the jar file.
Jar to be copied from c:\Software\Oracle12c\product\12.1.0\dbhome_1\jdbc\lib\ojd
bc6.jar
Copying jars into the Library...
1 file(s) copied.

Checking logs Folder.....
--Current Folder--
--avast--
this InstallationShipment "EXEC"
Inside Checking APPSERVER HOME.....
appserverhome

#####APPSERVER HOME NOT DEFINED#####
Enter APPSERVER HOME Directory:c:\Software\Weblogic12211\wlserver_

```

4. Enter the **Application Server Home Path** and press the **Enter** key.
This is an optional field, and the value entered is not validated.
The INSTALLER Welcome screen is displayed.


Figure 1-4 Oracle FLEXCUBE Investor Servicing


Oracle FLEXCUBE Universal Installer 12.3.0.0.0


Oracle FLEXCUBE Investor Servicing ORACLE


Prerequisites

Please specify the JDK and Oracle Home path.

JDK Path 

Oracle Home 

Application Server Home 

Application Server Location 

5. Proceed with the installation process.

On the first time launch of the installer on a system, all the fields in the installer will be displayed according to the values entered by the user at the command line level and the same data is saved in **env.properties**.

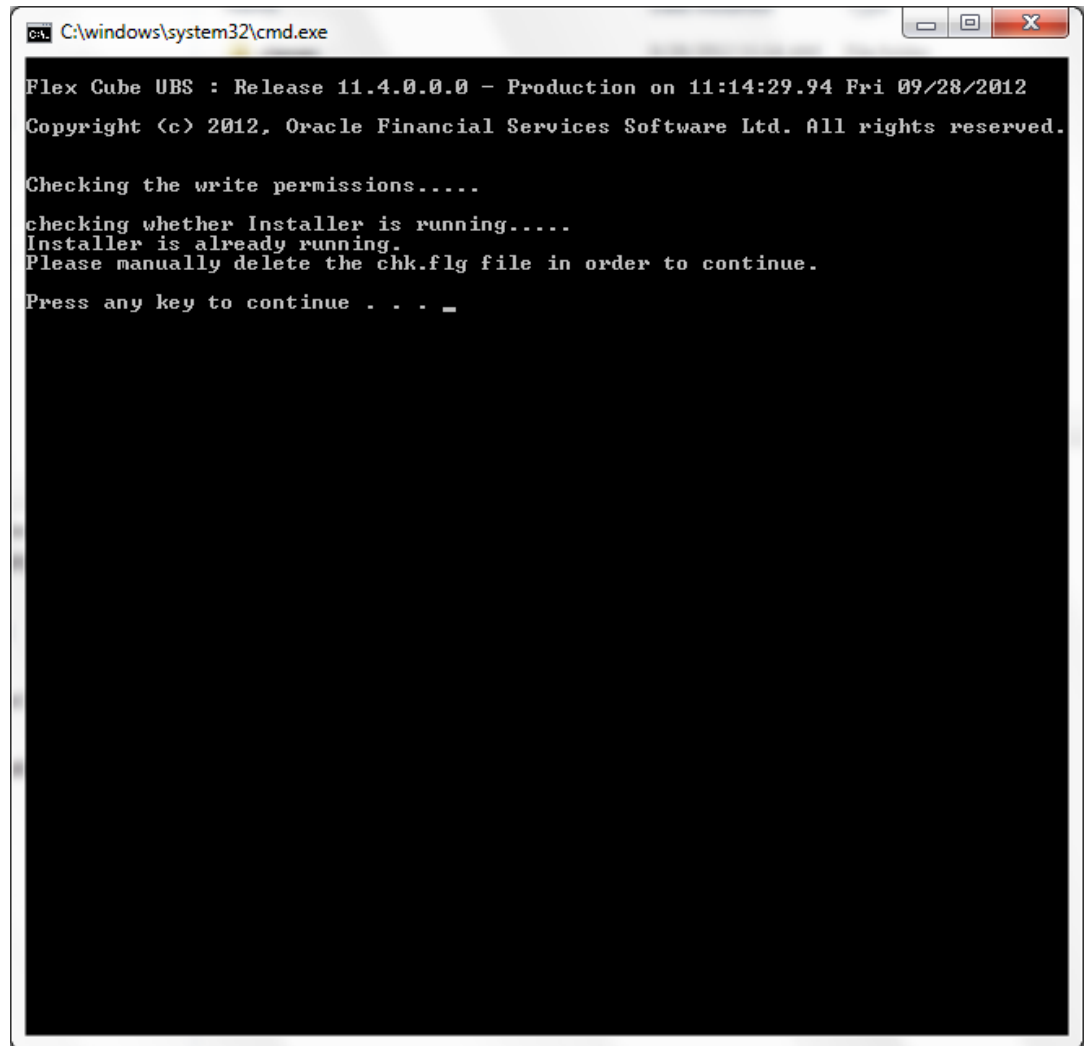
The installer will read the paths from **env.properties** on the subsequent launches of installer on the same machine and display in the respective fields.

6. You can relaunch the installer which was closed abruptly.

In this case, you have to delete the file **chk.flg** created in the installer sources and then relaunch the installer.

The following screen is displayed.

Figure 1-5 Relaunching Prompt



```
C:\windows\system32\cmd.exe

Flex Cube UBS : Release 11.4.0.0.0 - Production on 11:14:29.94 Fri 09/28/2012
Copyright (c) 2012, Oracle Financial Services Software Ltd. All rights reserved.

Checking the write permissions.....
checking whether Installer is running.....
Installer is already running.
Please manually delete the chk.flg file in order to continue.
Press any key to continue . . . _
```

1.2 Run Oracle FLEXCUBE Installer on LINUX

This topic describes the method to run Oracle FLEXCUBE Installer on LINUX system.

This topic contains the following sub-topics:

- [Log in PuTTY](#)
This topic provides the systematic instructions to log in to PuTTY.
- [Run Oracle FLEXCUBE Installer through XManager](#)
This topic explains the settings required for running Oracle FLEXCUBE Installer through XManager on LINUX machines.

1.2.1 Log in PuTTY

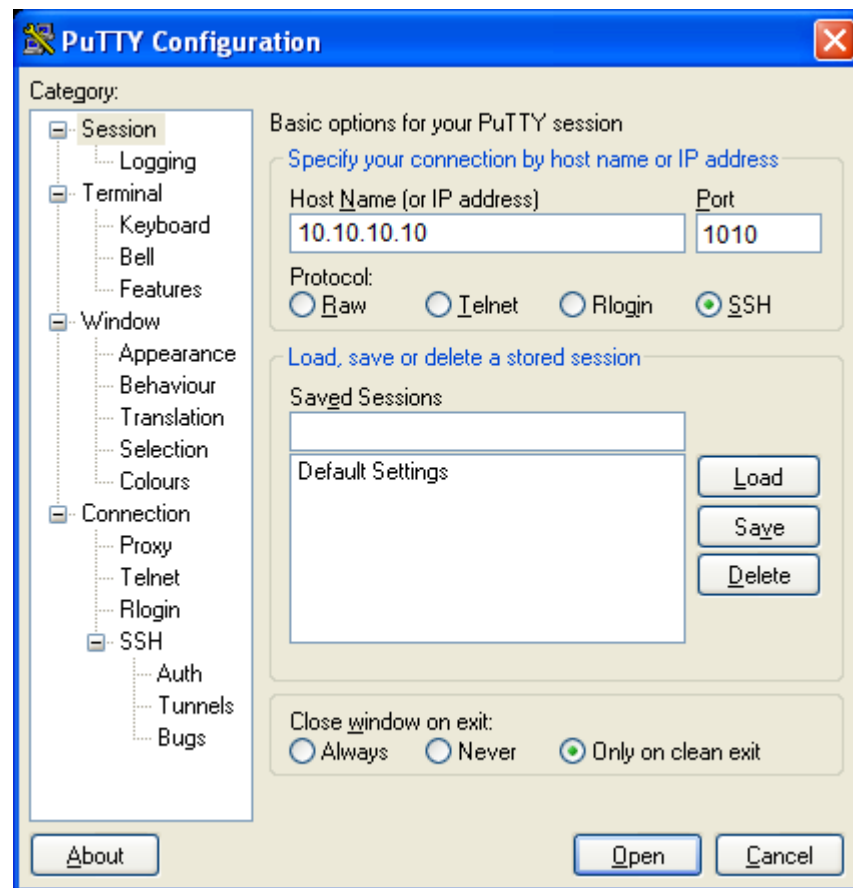
This topic provides the systematic instructions to log in to PuTTY.

To run installer on LINUX machines, you need to log in to the LINUX machine using PuTTY.

1. Go to **PuTTY Configuration** screen.

The **PuTTY Configuration** screen is displayed.

Figure 1-6 PuTTY Configuration



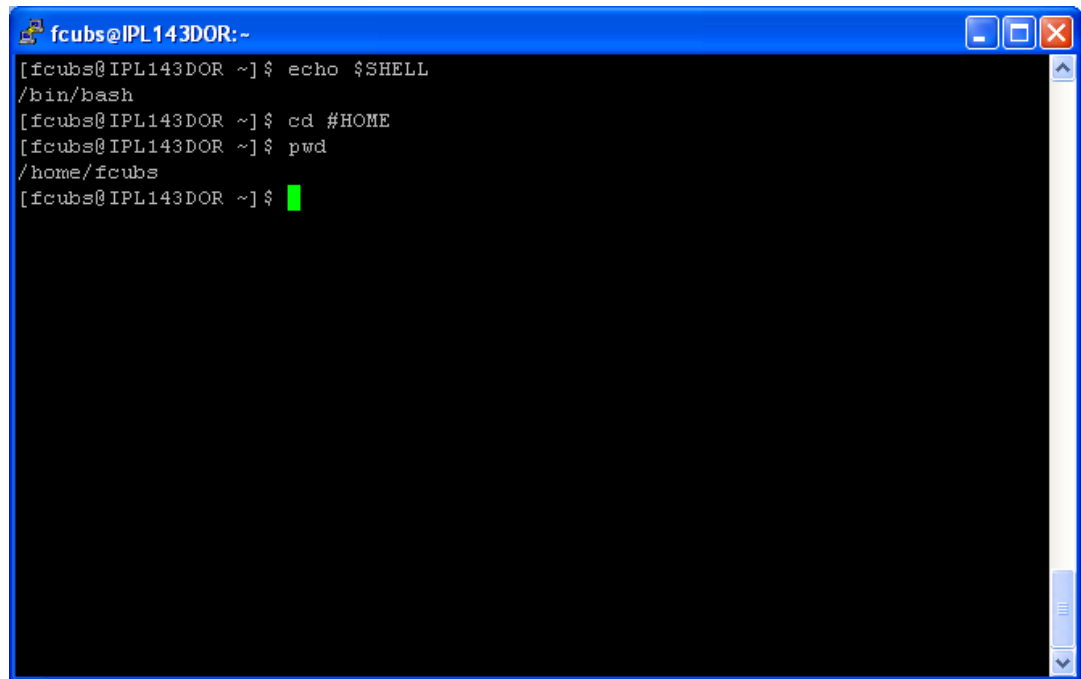
2. On the **PuTTY Configuration** screen, specify the fields.
For more information on fields, refer to the table.

Table 1-2 PuTTY Configuration - Field Description

Field	Description
Host Name	Specify the host address of LINUX machine which you need to connect.
Protocol	Select SSH as the protocol.

3. Click **Open** once you have provided the details.
You will be prompted for the **Login ID** and **Password** of the LINUX machine.
The **fcubs@IPL143DOR:~** window is displayed.

Figure 1-7 fcubs@IPL143DOR:~

A terminal window titled 'fcubs@IPL143DOR:~' with a blue border. The window shows a series of commands and their outputs: 'echo \$SHELL' returns '/bin/bash', 'cd \$HOME' returns the prompt, and 'pwd' returns '/home/fcubs'. The prompt is followed by a green cursor.

```
fcubs@IPL143DOR:~  
[fcubs@IPL143DOR ~]$ echo $SHELL  
/bin/bash  
[fcubs@IPL143DOR ~]$ cd $HOME  
[fcubs@IPL143DOR ~]$ pwd  
/home/fcubs  
[fcubs@IPL143DOR ~]$
```

4. Specify the login details.
5. Check the current shell for the user in the putty console using the following command
`echo $SHELL`.
In case the current shell is not bash, you need to set the shell to bash.
6. Check the user home directory using the following command `cd $HOME` and `$pwd`.

1.2.2 Run Oracle FLEXCUBE Installer through XManager

This topic explains the settings required for running Oracle FLEXCUBE Installer through XManager on LINUX machines.

XManager software is required.

1. Double click on the **Xstart** to connect to the server.
You can find **Xstart** icon inside XManager folder
The **Xstart** window display.

Figure 1-8 Xstart

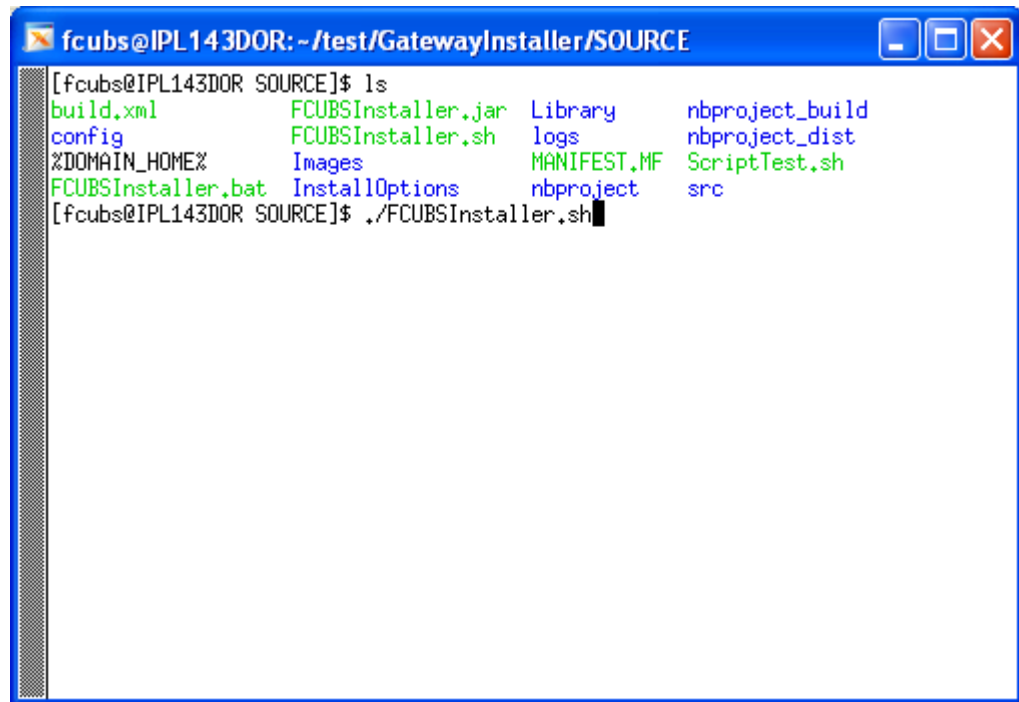
- On the **Xstart** window, specify the fields.
For more information on field, refer to the field description table.

Table 1-3 Xstart

Fields	Description
Session	Specify the session name.
Host	Specify the LINUX machine IP address.
Protocol	Specify the protocol based on the operating system. For example: Operating System: Oracle Enterprise Linux Protocol: SSH
User Name	Specify the LINUX user name.
Password	Specify the password for the LINUX user name.
Execution Command	Specify the execution command based on the operating system. For example: Operating System: Oracle Enterprise Linux Protocol: /usr/bin/xterm -ls -display \$DISPLAY

- Click **Run** after the details are specified.
The **Xstart** Console window is displayed

Figure 1-9 Xstart Console

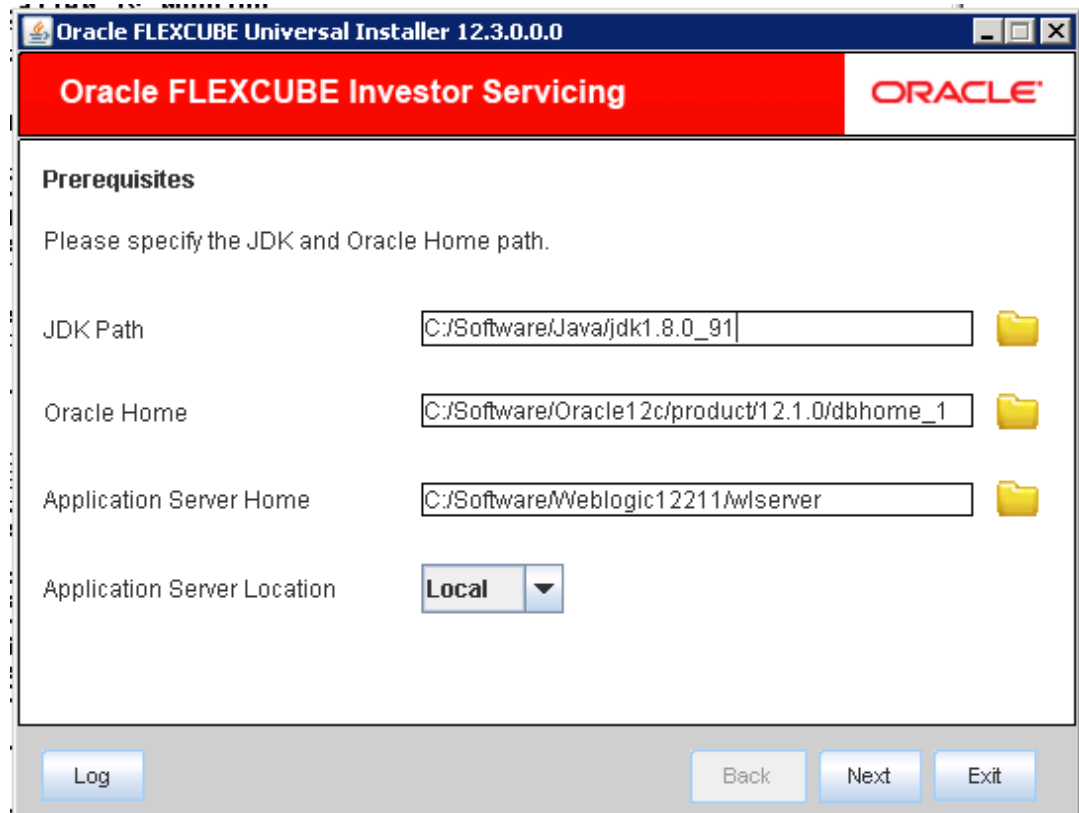


```
[fcubs@IPL143DOR SOURCE]$ ls
build.xml          FCUBSInstaller.jar  Library            nbproject_build
config             FCUBSInstaller.sh  logs              nbproject_dist
%DOMAIN_HOME%     Images             MANIFEST.MF       ScriptTest.sh
FCUBSInstaller.bat InstallOptions      nbproject         src
[fcubs@IPL143DOR SOURCE]$ ./FCUBSInstaller.sh
```

4. Use the command `ls` to list the files present in the directory.
5. You need to run the **FCUBSInstaller.sh** file to run the installer using the command `./FCUBSInstaller.sh` or `sh FCUBSInstaller.sh`.

The **Oracle FLEXCUBE Universal Installer** screen is displayed.

Figure 1-10 Oracle FLEXCUBE Universal Installer

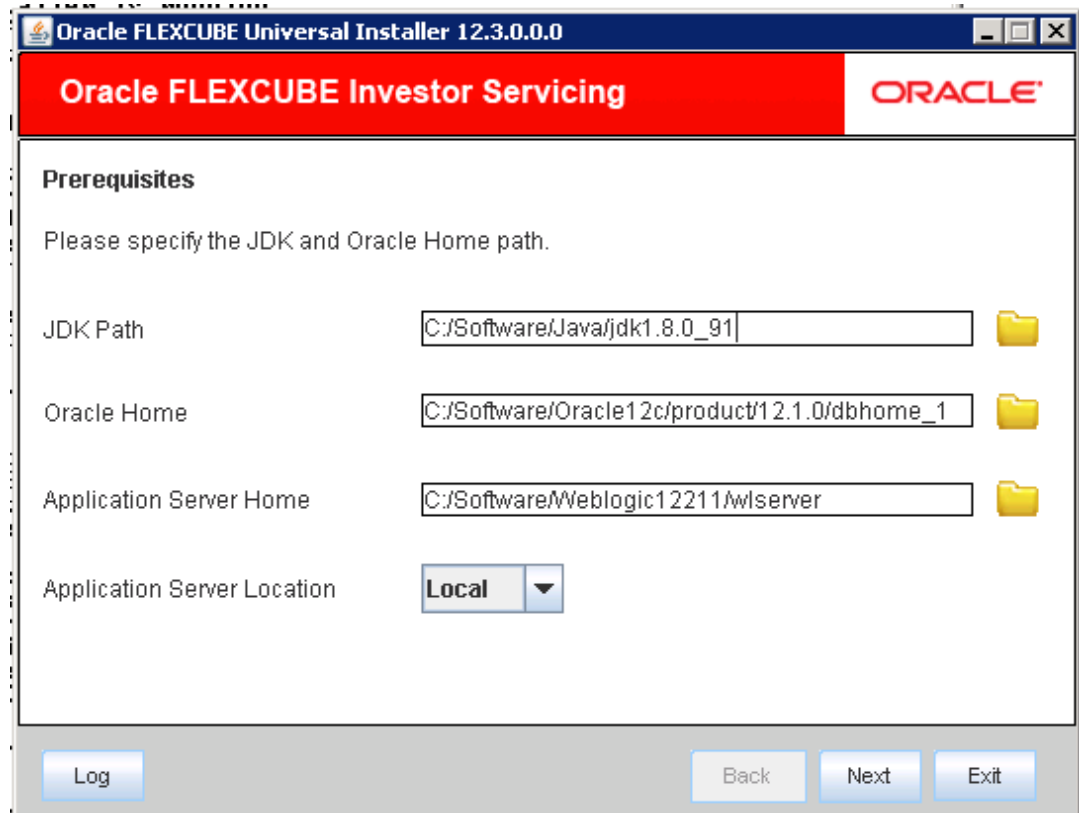


6. Enter the JAVA Home, Application Server Home, and ORACLE Home details.
7. Proceed with installation process.

On the first time launch of the installer on a system, all the fields in the installer will be displayed according to the values entered by the user at the command line level and the same data is saved in **env.properties**.

The installer will read the paths from **env.properties** on the subsequent launches of installer on the same machine and display in the respective fields.

Figure 1-11 Oracle FLEXCUBE Universal Installer



8. You must have the Installer and the Destination folders ready in the LINUX server with full access permissions.

1.3 Run Oracle FLEXCUBE Installer in Silent Mode

This topic describes the method to run Oracle FLEXCUBE Installer in silent mode.

Following features are supported in silent mode:

- EAR Build (FCIS, Gateway)
 - Deployment (FCIS, Gateway)
 - Data Base Installation
 - User Creation and DSN
1. You need to modify/edit the following properties files with proper values to run Oracle FLEXCUBE Installer in silent mode.

Path: \INSTALLER\SOURCE\config\

silentConfigBuild.properties to build Application in silent mode.

silentConfigDatabase.properties to setup Database in silent mode.

silentUserCreation_DSNproperties to set up user creation and DSN.

silentAppDeployment.properties to deploy application on Weblogic Server.

2. Run the installer in silent mode.

The following screen is displayed.

Figure 1-12 ConfigBuildProperties - Notepad

```

1 ##### SET THE APPLICATION SERVER AS WEBLOGIC/WEBSPPHERE #####
2 APPLICATION_SERVER=WEBLOGIC
3 INSTALLATION_TYPE=FCUBS
4 APPLICATION_TYPE=FCJ
5 APPLICATION_OS=Windows
6 WEBLOGIC_HOME=D:/Oracle/Middleware/wlaerver_10.3
7 JAVA_HOME=D:/Java/jdk1.6.0_16
8
9 APPLICATION_NAME=FCJApp
10
11 APPLICATION_CONTEXT=FCJNeoWeb
12
13 ##### DEPLOYMENT_OPTION=C/D/H ( ONLY REQUIRED FOR FCJ/FGL/ELCM APPLICATION TYPES) #####
14 DEPLOYMENT_OPTION=C
15
16 PROPERTY_FILE_PATH=D:/Installer/12.0/Dump/PropertyFile/Centralized/fcubs.properties
17 PROPERTY_FILE_PATH1=D:/Installer/12.0/Dump/PropertyFile/Hybrid/DC/fcubs.properties
18 EXCLUDE_PROPERTY_FILE=false
19 RUNTIME_PATH=D:/fcubs.properties
20
21 ##### GATEWAY_APPLICATION_TYPE=Gateway EJB/Gateway MDB/Gateway HTTP/Gateway WebServices (ONLY REQUIRED FOR GATEWAY APPLICATION) #####
22 GATEWAY_APPLICATION_TYPE=Gateway EJB
23
24 ##### PROVIDE A TILDA (~) SEPARATED LIST HERE FOR MULTIPLE SOURCES #####
25 SOURCE_LIST=D:/Installer/12.0/SOURCE
26
27 DESTINATION_DIRECTORY=D:/Installer/12.0/DEST
28
29 MODULES_REQD=SM-BC
  
```

- [Run Oracle FLEXCUBE Installer in Silent Mode in Windows](#)
This topic describes the method to run Oracle FLEXCUBE Installer in silent mode in Windows.
- [Run Oracle FLEXCUBE Installer in Silent Mode in LINUX](#)
This topic describes the method to run Oracle FLEXCUBE Installer in silent mode in LINUX.

1.3.1 Run Oracle FLEXCUBE Installer in Silent Mode in Windows

This topic describes the method to run Oracle FLEXCUBE Installer in silent mode in Windows.

To run the installer in silent mode in Windows, follow the steps given below:

1. In command prompt, navigate to the folder where the **FCUBSInstaller.bat** is located.
2. Type the commands as shown below:

The command must be given in a single line.

- **EAR Build (FCIS, Gateway):**

```
FCUBSInstaller.bat /s AB <INSTALLER>/config/silentConfigBuild.properties
```

- **Deployment on Weblogic Server:**

```
FCUBSInstaller.bat /s AD <INSTALLER>/config/silentAppDeployment.properties
```

- **Data Base Installation:**

```
FCUBSInstaller.bat /s DB <INSTALLER>/config/silentConfigDatabase.properties
```

- **User Creation:**

```
FCUBSInstaller.bat /s UC <INSTALLER>/config/silentUserCreation_DSN.properties
```

- **DSN:**

```
FCUBSInstaller.bat /s RP <INSTALLER>/config/silentUserCreation_DSN.properties
```

3. You will see the log window close automatically once the installer completes the task.

1.3.2 Run Oracle FLEXCUBE Installer in Silent Mode in LINUX

This topic describes the method to run Oracle FLEXCUBE Installer in silent mode in LINUX.

To run the installer in silent mode in LINUX, follow the steps given below:

1. In command prompt, navigate to the folder where the **FCUBSInstaller.bat** is located.
2. Type the commands as shown below:

The command must be given in a single line.

- **EAR Build (FCIS,Gateway):**

```
sh FCUBSInstaller.sh /s AB <INSTALLER>/config/ silentConfigBuild.properties
```

- **Deployment on Weblogic Server:**

```
sh FCUBSInstaller.sh /s AD <INSTALLER>/config/silentAppDeployment.properties
```

- **Data Base Installation:**

```
sh FCUBSInstaller.sh /s DB <INSTALLER>/config/ silentConfigDatabase.properties
```

- **User Creation:**

```
sh FCUBSInstaller.sh /s UC <INSTALLER>/config/silentUserCreation_DSN.properties
```

- **DSN:**

```
sh FCUBSInstaller.sh /s RP <INSTALLER>/config/ silentUserCreation_DSN.properties
```

3. Use the exact folder location instead of <INSTALLER> in the command.