

# Oracle® FLEXCUBE Investor Servicing Manage Application Utility



Release 14.7.7.0.0  
G33213-01  
April 2025

ORACLE®

Oracle FLEXCUBE Investor Servicing Manage Application Utility, Release 14.7.7.0.0

G33213-01

Copyright © 2007, 2025, Oracle and/or its affiliates.

This software and related documentation are provided under a license agreement containing restrictions on use and disclosure and are protected by intellectual property laws. Except as expressly permitted in your license agreement or allowed by law, you may not use, copy, reproduce, translate, broadcast, modify, license, transmit, distribute, exhibit, perform, publish, or display any part, in any form, or by any means. Reverse engineering, disassembly, or decompilation of this software, unless required by law for interoperability, is prohibited.

The information contained herein is subject to change without notice and is not warranted to be error-free. If you find any errors, please report them to us in writing.

If this is software, software documentation, data (as defined in the Federal Acquisition Regulation), or related documentation that is delivered to the U.S. Government or anyone licensing it on behalf of the U.S. Government, then the following notice is applicable:

U.S. GOVERNMENT END USERS: Oracle programs (including any operating system, integrated software, any programs embedded, installed, or activated on delivered hardware, and modifications of such programs) and Oracle computer documentation or other Oracle data delivered to or accessed by U.S. Government end users are "commercial computer software," "commercial computer software documentation," or "limited rights data" pursuant to the applicable Federal Acquisition Regulation and agency-specific supplemental regulations. As such, the use, reproduction, duplication, release, display, disclosure, modification, preparation of derivative works, and/or adaptation of i) Oracle programs (including any operating system, integrated software, any programs embedded, installed, or activated on delivered hardware, and modifications of such programs), ii) Oracle computer documentation and/or iii) other Oracle data, is subject to the rights and limitations specified in the license contained in the applicable contract. The terms governing the U.S. Government's use of Oracle cloud services are defined by the applicable contract for such services. No other rights are granted to the U.S. Government.

This software or hardware is developed for general use in a variety of information management applications. It is not developed or intended for use in any inherently dangerous applications, including applications that may create a risk of personal injury. If you use this software or hardware in dangerous applications, then you shall be responsible to take all appropriate fail-safe, backup, redundancy, and other measures to ensure its safe use. Oracle Corporation and its affiliates disclaim any liability for any damages caused by use of this software or hardware in dangerous applications.

Oracle®, Java, MySQL, and NetSuite are registered trademarks of Oracle and/or its affiliates. Other names may be trademarks of their respective owners.

Intel and Intel Inside are trademarks or registered trademarks of Intel Corporation. All SPARC trademarks are used under license and are trademarks or registered trademarks of SPARC International, Inc. AMD, Epyc, and the AMD logo are trademarks or registered trademarks of Advanced Micro Devices. UNIX is a registered trademark of The Open Group.

This software or hardware and documentation may provide access to or information about content, products, and services from third parties. Oracle Corporation and its affiliates are not responsible for and expressly disclaim all warranties of any kind with respect to third-party content, products, and services unless otherwise set forth in an applicable agreement between you and Oracle. Oracle Corporation and its affiliates will not be responsible for any loss, costs, or damages incurred due to your access to or use of third-party content, products, or services, except as set forth in an applicable agreement between you and Oracle.

# Contents

## Preface

---

Purpose	iv
Audience	iv
Documentation Accessibility	iv
Critical Patches	v
Diversity and Inclusion	v
Conventions	v
Screenshot Disclaimer	v
Acronyms and Abbreviations	v

## 1 Manage Application Utility

---

1.1	Installer Properties on Manage Application Setup	1-2
1.2	Set up Manage Application Utility	1-2
1.3	Operations involved in the Application Stage	1-6
1.4	UI Error Messages	1-7

# Preface

**Oracle FLEXCUBE Investor Servicing** is a comprehensive mutual funds automation software from Oracle® Financial Servicing Software Ltd.©.

You can use the system to achieve optimum automation of all your mutual fund investor servicing processes, as it provides guidelines for specific tasks, descriptions of various features and processes, and general information.

This topic contains the following sub-topics:

- [Purpose](#)
- [Audience](#)
- [Documentation Accessibility](#)
- [Critical Patches](#)
- [Diversity and Inclusion](#)
- [Conventions](#)
- [Screenshot Disclaimer](#)
- [Acronyms and Abbreviations](#)

## Purpose

This manual is designed to help acquaint you with the installation of **Oracle FLEXCUBE Investor Servicing** application.

## Audience

This manual is intended for the following User/User Roles:

**Table 1 Users and Roles**

Users	Roles
Implementation team	Implementation of Oracle FLEXCUBE Investor Servicing
Presales team	Install Oracle FLEXCUBE Investor Servicing for demo purpose
Bank personnel	Who installs Oracle FLEXCUBE Investor Servicing

## Documentation Accessibility

For information about Oracle's commitment to accessibility, visit the Oracle Accessibility Program website at <http://www.oracle.com/pls/topic/lookup?ctx=acc&id=docacc>.

## Access to Oracle Support

Oracle customer access to and use of Oracle support services will be pursuant to the terms and conditions specified in their Oracle order for the applicable services.

## Critical Patches

Oracle advises customers to get all their security vulnerability information from the Oracle Critical Patch Update Advisory, which is available at [Critical Patches, Security Alerts and Bulletins](#). All critical patches should be applied in a timely manner to ensure effective security, as strongly recommended by [Oracle Software Security Assurance](#).

## Diversity and Inclusion

Oracle is fully committed to diversity and inclusion. Oracle respects and values having a diverse workforce that increases thought leadership and innovation. As part of our initiative to build a more inclusive culture that positively impacts our employees, customers, and partners, we are working to remove insensitive terms from our products and documentation. We are also mindful of the necessity to maintain compatibility with our customers' existing technologies and the need to ensure continuity of service as Oracle's offerings and industry standards evolve. Because of these technical constraints, our effort to remove insensitive terms is ongoing and will take time and external cooperation.

## Conventions

The following text conventions are used in this document:

Convention	Meaning
<b>boldface</b>	Boldface type indicates graphical user interface elements associated with an action, or terms defined in text or the glossary.
<i>italic</i>	Italic type indicates book titles, emphasis, or placeholder variables for which you supply particular values.
<code>monospace</code>	Monospace type indicates commands within a paragraph, URLs, code in examples, text that appears on the screen, or text that you enter.

## Screenshot Disclaimer

Personal information used in the interface or documents is dummy and does not exist in the real world. It is only for reference purposes.

## Acronyms and Abbreviations

The list of the acronyms and abbreviations used are as follows:

**Table 2 Acronyms and Abbreviations**

Abbreviation	Description
<b>FCIS</b>	Oracle FLEXCUBE Investor Servicing
<b>OEM</b>	Oracle Enterprise Manager

**Table 2 (Cont.) Acronyms and Abbreviations**

Abbreviation	Description
<b>EMS</b>	Electronic Messaging Service
<b>EJB</b>	Enterprise Java Bean
<b>MDB</b>	Message Driven Beans

# 1

## Manage Application Utility

This topic provides the information on Manage Application Utility.

### Pre-requisites

- An Admin user (for instance, FCISADMIN) should be created along with the required regular users (SMS, LOB, SP, PENSION and REPORTS) in APPROOT and all application PDB's
- All the users except FCISADMIN should be set as user explicit at APPROOT level.
- FCISADMIN user should have the below two grants along with the regular schema grants:
  - DBMS\_PDB
  - ALTER DATABASE
- FCISADMIN user only should be used for the operations of manage application.
- For SYNC operation, the user name should be same in both root PDB and application PDB.

### Manage Application Utility

The utility **Manage Application** is available in the Main FCIS screen.

If Application root deployment is not enabled, then this utility will not be available.

If **APPROOT\_DEPLOYMENT = N**, then the **Manage Application** utility will not be available.

This utility will be available only if Application root deployment is enabled.

If **APPROOT\_DEPLOYMENT = Y**, then the **Manage Application** utility will be available.

If Application root deployment is not enabled, then the system will allow database installation directly.

If Application root deployment is enabled, then the system will not allow database installation directly without operations **Install Begin** or **Upgrade Begin** executed at the root application. This will be validated during **Test Connection** action of the database setup.

This topic contains the following sub-topics:

- [Installer Properties on Manage Application Setup](#)  
This topic gives information on maintaining installer properties to set up Manage Application utility.
- [Set up Manage Application Utility](#)  
This topic provides the information about setting up Manage Application Utility.
- [Operations involved in the Application Stage](#)  
This topic explains the different operations involved in the Application Stage.
- [UI Error Messages](#)  
This topic gives the list of UI Error Messages.

## 1.1 Installer Properties on Manage Application Setup

This topic gives information on maintaining installer properties to set up Manage Application utility.

The installer is enhanced to support the application root enabled database setup also. The **installer.properties** should have the following parameters:

### **APPROOT\_DEPLOYMENT**

**Y** means installer will support application root enabled deployment only. **N** means installer will not support application root enabled deployment. This will be the default value.

### **APPROOT\_APPNAME**

This will be used only when **APPROOT\_DEPLOYMENT** value is **Y**. Application name for manage application is maintained in this.

### **EXPLICIT\_USERS**

This will be used only when **APPROOT\_DEPLOYMENT** value is **Y**. All the users except **FCISADMIN** should be maintained with ~ separator.

## 1.2 Set up Manage Application Utility

This topic provides the information about setting up Manage Application Utility.

1. Double-click **FCUBSInstaller.bat** batch file to start **Oracle FLEXCUBE Universal Installer**.

The **Oracle FLEXCUBE Universal Installer** screen is displayed.



**Figure 1-1 Oracle FLEXCUBE Universal Installer**

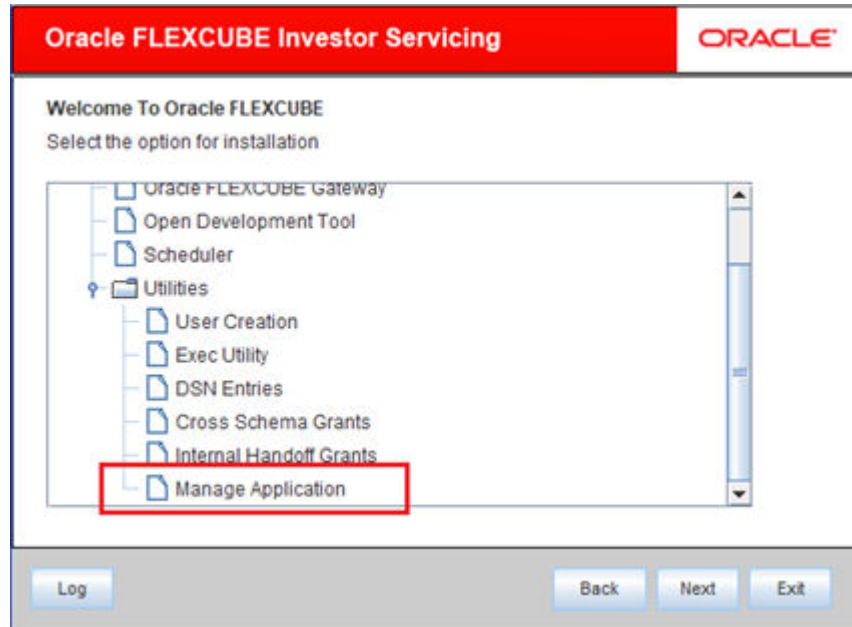
2. On **Oracle FLEXCUBE Universal Installer** screen, enter the following details.  
Refer to the table for JDK and Oracle Home path.

**Table 1-1 JDK and Oracle Home path**

Field	Description
<b>JDK Path</b>	Provide Home folder path of JDK1.8.
<b>Oracle Home</b>	Provide home folder path of Oracle Client or Database.
<b>Application Server Home</b>	Provide home folder path of Application Server. <b>Note:</b> In case any of the selected directories is incorrect, the Installer will display an appropriate error message. In that case, you need to correct the directory path and proceed.
<b>Application Server Location</b>	Select location of the application server either as local or remote.

3. Click **Next** to select the utility option for installation.
4. Select **Manage Application** from the lists of **Utilities** option.  
The options available for installation are displayed.

Figure 1-2 Utilities\_Manage Application



5. Click **Next** to specify schema details.  
The following screen is displayed.

Figure 1-3 Schema Details for Application Management

The screenshot shows the 'Oracle FLEXCUBE Universal Installer 14.1.0.0.0' window. The title bar includes the Oracle logo. The main content area is titled 'Schema Details' and 'Provide ADMIN schema details for Application Management'. It contains a table with the following data:

Name	Value
Username	ADMINUSER
Password	*****
Service Name	APPROOT
IP Address	10.10.10.10
Port	1521
TNS Connect Descriptor	APPROOT
Application Name	FCISAPP
Application Stage	Install Begin

Below the table are buttons for 'Test Connection' and 'Apply'. At the bottom, there are buttons for 'Log', 'Back', 'Next', and 'Exit'.

6. Specify the following schema details for application management.  
Refer to the table for schema details.

Table 1-2 Schema Details for Application Management

Field	Description
User Name	Specify the user name to access the schema.
Password	Enter the schema password.
Service Name	Provide service name of Database.
TNS Connect Descriptor	Specify a valid connect string that contains the details for database connectivity.
IP Address	Specify the IP address of the system where the database schema is installed.
Port	Specify the port number.
Application Name	Application Name field will be defaulted from APPROOT_APPNAME of the <b>installer.properties</b> . This defaulted Application Name should not be changed. This will be validated during <b>Apply</b> process. Once the installation is executed in the application root environment then, APPROOT_APPNAME of the <b>installer.properties</b> value must not be changed. This will be operationally controlled.
Application Stage	Select the operation that needs to be performed. This drop-down field will have the below options: <ul style="list-style-type: none"><li>• <b>Install Begin</b></li><li>• <b>Install End</b></li><li>• <b>Upgrade Begin</b></li><li>• <b>Upgrade End</b></li><li>• <b>Sync</b></li></ul>

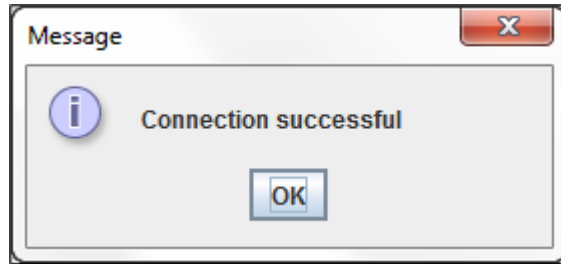
7. Select the **Install Begin** option to initiate a new installation in the root application. It can be executed only once for that application.
8. Select the **Install End** option to initiate a new installation in the root application. It can be executed only once for that application.
9. Select the **Upgrade Begin** option to initiate the application upgrade from the current application version to next version. The version will be automatically incremented.
10. Select the **Upgrade End** option to end the initiated upgrading process in the root application.
11. Select the **Sync** option to sync the application PDB into the initiated newly installed version or upgraded version for the root application PDB.

For each application PDB, this Sync should be executed separately.

12. Click the **Test Connection** button to check the status of the connection to database.
  - If the connection is established, the installer displays a message **Connection Successful**.
  - If there is an error in establishing the connection, the system displays the message **Invalid DB Credentials**.
  - If the TNS entry is not proper, the installer displays the message **TNS entries are not proper**.

Once the connection is established, the following message is displayed.

**Figure 1-4 Information Message on Successful Connection**



13. Start the screen and you will find the following buttons and actions.

The **Apply** and **Next** buttons will not be enabled. On click of the **Test Connection**, the entered user details will be validated along with the required PDB (root PDB or application PDB) along with necessary user rights. On successful connection, the **Apply** and **Next** buttons will get enabled.

## 1.3 Operations involved in the Application Stage

This topic explains the different operations involved in the Application Stage.

The different operations involved are:

### Apply and Test Connection Buttons

On click of **Apply** button, the necessary operation which is selected against **Application Stage** field will get executed.

If the user has modified any value once after the successful **Test Connection**, the **Apply** button will get disabled once again. **Test Connection** needs to be tested once again to validate the current values and **Apply** button will get enabled on successful connection.

### Install Begin and Install End Operations

In a root application setup, **Install Begin** should be executed as initial setup. After the execution of **Install Begin**, the application status will be available as **INSTALLING**.

Now the database setup for all the FCIS schemas can be done at application root level as usual.

Once the necessary database setup are done, then **Install End** should be executed. This will update the PDB application status as **NORMAL**.

This **Install Begin** and **Install End** should be executed only once in an installation.

Once the **Install End** executed at root application, then **Sync** operation can be executed in the required application PDBs.

### Upgrade Begin and Upgrade End Operations

**Upgrade Begin** and **Upgrade End** can be used for further changes in that application.

After executing **Upgrade Begin** and **Upgrade End**, the application status will be **UPGRADING** and **NORMAL** respectively.

In the application root enabled deployment, the database setup can be done only when the application status as **INSTALLING** or **UPGRADING**.

Once the **Install End** or **Upgrade End** is completed, then only that application version can be synced to the required application PDB.

### Sync Operation

Once the **Sync** operation has been completed then, it cannot be rolled back. It will be irreversible.

Proper backup needs to be maintained. In case of any sync failure, then it should be restored based on the backup only.

The database setup through installer will be allowed only in application root when the application status as **INSTALLING** or **UPGRADING**. The database changes from application root will be propagated to application PDB only by sync operation.

#### Note:

- All the common application database objects will be compiled only in the application root PDB.
- The compiled objects will be propagated from application root container to required application PDB during sync operation. The application will be created for the synchronized application PDB.
- Objects created in the application root PDB cannot be dropped/alterd in application PDB. So the dynamically creating sequences for transactiontbl and referencetbl will be dropped from DDL tool. For fresh installation, these sequences will be created during each FMG module setup. For incremental version, the sequences for transactiontbl and referenceable should be created manually by calling sprecreatesequences and migration needs to be done.
- To reduce the number of invalids, the criteria load functions will be dropped and the same will be replaced by packages. Anyone of the criteria load for each criteria type should get unlock and authorize the same to reflect the criteria changes into the corresponding criteria packages.

## 1.4 UI Error Messages

This topic gives the list of UI Error Messages.

**Table 1-3 UI Error Messages List**

Sl.No.	Validation	Type	Message
1	For APPROOT enabled application, try to install database for new installation deployment by without doing Install Begin or Upgrade Begin	E	For APPROOT enabled deployments, DB setup is allowed only when application stage as INSTALLING or UPGRADING
2	For APPROOT enabled application, try to install database for Patch deployment by without doing Install Begin or Upgrade Begin	E	For APPROOT enabled deployments, DB setup is allowed only when application stage as INSTALLING or UPGRADING

Table 1-3 (Cont.) UI Error Messages List

Sl.No.	Validation	Type	Message
3	For APPROOT enabled application, try to install database for Rolled-up Patch deployment by without doing Install Begin or Upgrade Begin	E	For APPROOT enabled deployments, DB setup is allowed only when application stage as INSTALLING or UPGRADING
4	Modify the Application Name and click Apply.	E	Application name should be same as APPROOT application name property
5	Apply Install Begin operation for the second time.	E	FCISAPP application is already installed
6	Apply Install End operation in which Install Begin not applied in that application root environment.	E	FCISAPP application installation is not initiated
7	Apply Upgrade Begin when the current application status is not Install End or Upgrade End in the application root environment.	E	Upgrade begin is applicable only on applications with status as NORMAL
8	Apply Upgrade End without executing Upgrade Begin.	E	FCISAPP application upgrade is not initiated
9	Apply Install Begin for the first time in the application root.	I	Install Begin process for FCISAPP application is completed
10	Apply Install End for the first time in the application root.	I	Install End process for FCISAPP application is completed
11	Apply Upgrade Begin in which application root status is NORMAL	I	Upgrade Begin process for FCISAPP application is completed
12	Apply Upgrade End in which application root status is UPGRADING	I	Upgrade End process for FCISAPP application is completed
13	Apply Sync in the application PDB whereas application root status is NORMAL	I	Sync process for FCISAPP application is completed
14	Apply Install Begin in which application root status is NORMAL	I	Install Begin process for FCISAPP application is initiated. Please wait for completion...
15	Apply Upgrade Begin in which application root status is NORMAL	I	Upgrade Begin process for FCISAPP application is initiated. Please wait for completion...
16	Apply Sync in the application PDB whereas application root status is NORMAL	I	Sync process for FCISAPP application is initiated. Please wait for completion...
17	Enter application PDB files along with Application stage as Install Begin and click Test Connection	E	Application Root schema details should be entered for Install Begin

Table 1-3 (Cont.) UI Error Messages List

Sl.No.	Validation	Type	Message
18	Enter application PDB files along with Application stage as Install End and click Test Connection	E	Application Root schema details should be entered for Install End
19	Enter application PDB files along with Application stage as Upgrade Begin and click Test Connection	E	Application Root schema details should be entered for Upgrade Begin
20	Enter application PDB files along with Application stage as Upgrade End and click Test Connection	E	Application Root schema details should be entered for Upgrade End
21	Enter root PDB files along with Application stage as Sync and click Test Connection	E	Application PDB schema details should be entered for Sync
22	Enter schema user details in which it does not have ALTER DATABASE grants and click Test Connection	E	User does not have proper DB rights for this operation
23	Enter Invalid DB user credential details and click Test Connection	E	Invalid DB Credentials
24	During DSN creation, the AppRoot JNDI field value is not entered	E	AppRoot JNDI is mandatory