

Oracle® FLEXCUBE Investor Servicing REST Service Application Setup



Release 14.7.7.0.0
G33220-01
April 2025

ORACLE®

Copyright © 2007, 2025, Oracle and/or its affiliates.

This software and related documentation are provided under a license agreement containing restrictions on use and disclosure and are protected by intellectual property laws. Except as expressly permitted in your license agreement or allowed by law, you may not use, copy, reproduce, translate, broadcast, modify, license, transmit, distribute, exhibit, perform, publish, or display any part, in any form, or by any means. Reverse engineering, disassembly, or decompilation of this software, unless required by law for interoperability, is prohibited.

The information contained herein is subject to change without notice and is not warranted to be error-free. If you find any errors, please report them to us in writing.

If this is software, software documentation, data (as defined in the Federal Acquisition Regulation), or related documentation that is delivered to the U.S. Government or anyone licensing it on behalf of the U.S. Government, then the following notice is applicable:

U.S. GOVERNMENT END USERS: Oracle programs (including any operating system, integrated software, any programs embedded, installed, or activated on delivered hardware, and modifications of such programs) and Oracle computer documentation or other Oracle data delivered to or accessed by U.S. Government end users are "commercial computer software," "commercial computer software documentation," or "limited rights data" pursuant to the applicable Federal Acquisition Regulation and agency-specific supplemental regulations. As such, the use, reproduction, duplication, release, display, disclosure, modification, preparation of derivative works, and/or adaptation of i) Oracle programs (including any operating system, integrated software, any programs embedded, installed, or activated on delivered hardware, and modifications of such programs), ii) Oracle computer documentation and/or iii) other Oracle data, is subject to the rights and limitations specified in the license contained in the applicable contract. The terms governing the U.S. Government's use of Oracle cloud services are defined by the applicable contract for such services. No other rights are granted to the U.S. Government.

This software or hardware is developed for general use in a variety of information management applications. It is not developed or intended for use in any inherently dangerous applications, including applications that may create a risk of personal injury. If you use this software or hardware in dangerous applications, then you shall be responsible to take all appropriate fail-safe, backup, redundancy, and other measures to ensure its safe use. Oracle Corporation and its affiliates disclaim any liability for any damages caused by use of this software or hardware in dangerous applications.

Oracle®, Java, MySQL, and NetSuite are registered trademarks of Oracle and/or its affiliates. Other names may be trademarks of their respective owners.

Intel and Intel Inside are trademarks or registered trademarks of Intel Corporation. All SPARC trademarks are used under license and are trademarks or registered trademarks of SPARC International, Inc. AMD, Epyc, and the AMD logo are trademarks or registered trademarks of Advanced Micro Devices. UNIX is a registered trademark of The Open Group.

This software or hardware and documentation may provide access to or information about content, products, and services from third parties. Oracle Corporation and its affiliates are not responsible for and expressly disclaim all warranties of any kind with respect to third-party content, products, and services unless otherwise set forth in an applicable agreement between you and Oracle. Oracle Corporation and its affiliates will not be responsible for any loss, costs, or damages incurred due to your access to or use of third-party content, products, or services, except as set forth in an applicable agreement between you and Oracle.

Contents

Preface

Purpose	iv
Audience	iv
Documentation Accessibility	iv
Critical Patches	v
Diversity and Inclusion	v
Conventions	v
Screenshot Disclaimer	v
Acronyms and Abbreviations	v

1 Set up Rest Service for Oracle FLEXCUBE

1.1 Set Up REST Services EJB Application	1-1
1.2 Set Up REST Services WebServices	1-9
1.3 Post Building Activity	1-17

Preface

Oracle FLEXCUBE Investor Servicing is a comprehensive mutual funds automation software from Oracle® Financial Servicing Software Ltd.©.

You can use the system to achieve optimum automation of all your mutual fund investor servicing processes, as it provides guidelines for specific tasks, descriptions of various features and processes, and general information.

This topic contains the following sub-topics:

- [Purpose](#)
- [Audience](#)
- [Documentation Accessibility](#)
- [Critical Patches](#)
- [Diversity and Inclusion](#)
- [Conventions](#)
- [Screenshot Disclaimer](#)
- [Acronyms and Abbreviations](#)

Purpose

This manual is designed to help acquaint you with the installation of **Oracle FLEXCUBE Investor Servicing** application.

Audience

This manual is intended for the following User/User Roles:

Table 1 Users and Roles

Users	Roles
Implementation team	Implementation of Oracle FLEXCUBE Investor Servicing
Presales team	Install Oracle FLEXCUBE Investor Servicing for demo purpose
Bank personnel	Who installs Oracle FLEXCUBE Investor Servicing

Documentation Accessibility

For information about Oracle's commitment to accessibility, visit the Oracle Accessibility Program website at <http://www.oracle.com/pls/topic/lookup?ctx=acc&id=docacc>.

Access to Oracle Support

Oracle customer access to and use of Oracle support services will be pursuant to the terms and conditions specified in their Oracle order for the applicable services.

Critical Patches

Oracle advises customers to get all their security vulnerability information from the Oracle Critical Patch Update Advisory, which is available at [Critical Patches, Security Alerts and Bulletins](#). All critical patches should be applied in a timely manner to ensure effective security, as strongly recommended by [Oracle Software Security Assurance](#).

Diversity and Inclusion

Oracle is fully committed to diversity and inclusion. Oracle respects and values having a diverse workforce that increases thought leadership and innovation. As part of our initiative to build a more inclusive culture that positively impacts our employees, customers, and partners, we are working to remove insensitive terms from our products and documentation. We are also mindful of the necessity to maintain compatibility with our customers' existing technologies and the need to ensure continuity of service as Oracle's offerings and industry standards evolve. Because of these technical constraints, our effort to remove insensitive terms is ongoing and will take time and external cooperation.

Conventions

The following text conventions are used in this document:

Convention	Meaning
boldface	Boldface type indicates graphical user interface elements associated with an action, or terms defined in text or the glossary.
<i>italic</i>	Italic type indicates book titles, emphasis, or placeholder variables for which you supply particular values.
<code>monospace</code>	Monospace type indicates commands within a paragraph, URLs, code in examples, text that appears on the screen, or text that you enter.

Screenshot Disclaimer

Personal information used in the interface or documents is dummy and does not exist in the real world. It is only for reference purposes.

Acronyms and Abbreviations

The list of the acronyms and abbreviations used are as follows:

Table 2 Acronyms and Abbreviations

Abbreviation	Description
FCIS	Oracle FLEXCUBE Investor Servicing
OEM	Oracle Enterprise Manager

Table 2 (Cont.) Acronyms and Abbreviations

Abbreviation	Description
EMS	Electronic Messaging Service
EJB	Enterprise Java Bean
MDB	Message Driven Beans

1

Set up Rest Service for Oracle FLEXCUBE

This topic explains the steps for setting up the Rest Services for Oracle FLEXCUBE.

The methods of setting up Rest EJB Application include:

- [Set Up REST Services EJB Application](#)
This topic explains the methods of to set up REST Services EJB Application.
- [Set Up REST Services WebServices](#)
This topic explains the methods of to set up REST Services WebServices Application.
- [Post Building Activity](#)
This topic introduces you to the activities to be carried out after setting up the Rest applications.

1.1 Set Up REST Services EJB Application

This topic explains the methods of to set up REST Services EJB Application.

Create the following RestEJB property files before building the application:

- `GW_RESTEJB_Prop.properties`
- `gw_restejb_logger.properties`

Follow the steps to build EAR file for RestEJB Application given below:

1. Start **Oracle FLEXCUBE Universal Installer**.

The **Oracle FLEXCUBE Universal Installer** is displayed.

Figure 1-1 Oracle FLEXCUBE Universal Installer

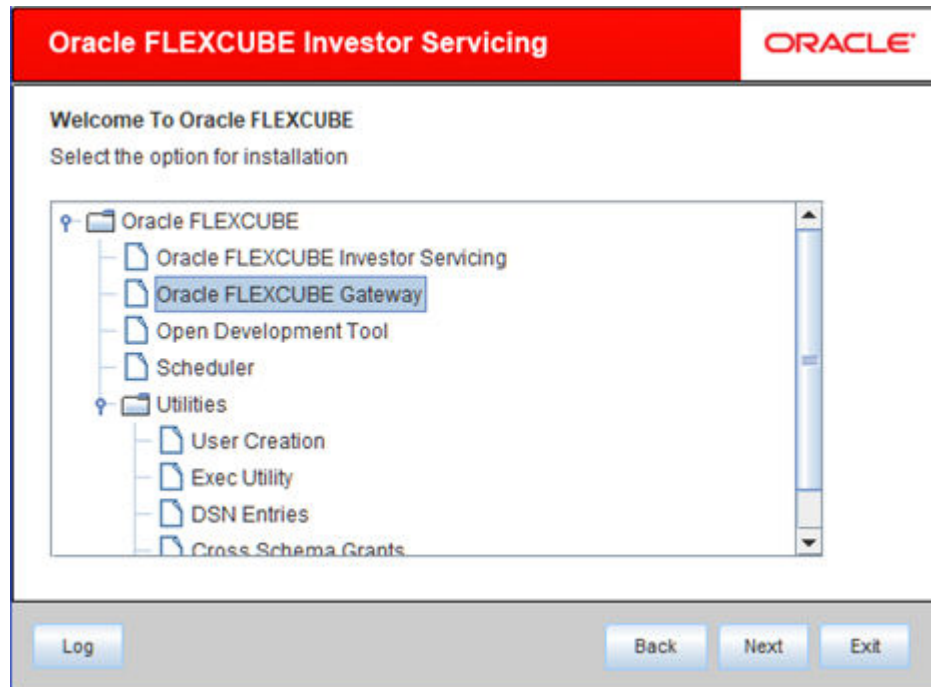
2. On **Oracle FLEXCUBE Universal Installer** screen, enter the following details. Refer to the table for JDK and Oracle Home path.

Table 1-1 JDK and Oracle Home path

Field	Description
JDK Path	Provide Home folder path of JDK1.8.
Oracle Home	Provide home folder path of Oracle Client or Database.
Application Server Home	Provide home folder path of Application Server.
Application Server Location	Select location of the application server either local or remote.

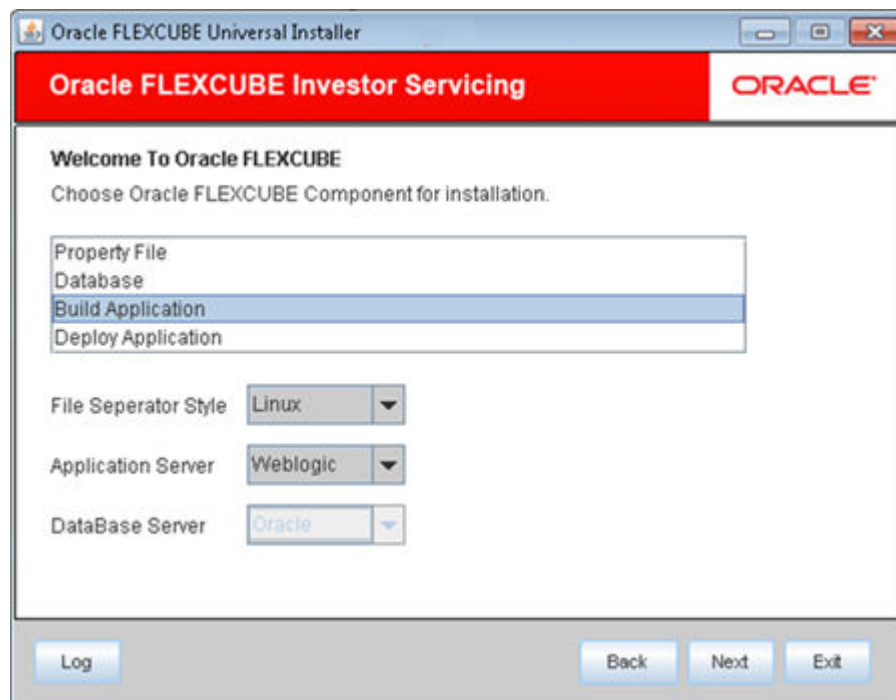
3. Click **Next** to select the option for installation.
4. Select **Oracle FLEXCUBE Gateway** from the lists of **Oracle FLEXCUBE** options. The available options for installation are displayed.

Figure 1-2 Oracle FLEXCUBE_Oracle FLEXCUBE Gateway



5. Click **Next** to choose **Oracle FLEXCUBE** component for installation.

Figure 1-3 Build Application



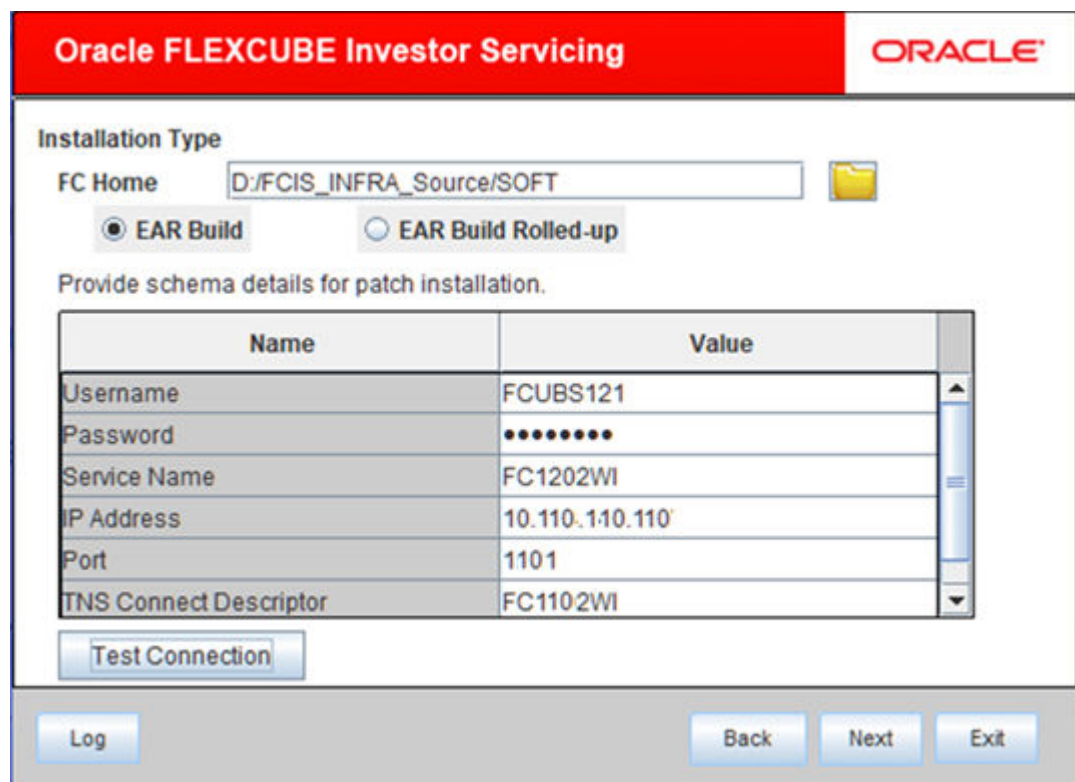
6. Select **Build Application**.
The available options **Property File**, **Database**, **Build Application**, and **Deploy Application** are displayed.

7. Specify the operating system in which you are creating the property file. Choose the appropriate one from the drop-down list.
8. Specify the application server in which you are creating the property file. Choose the appropriate one from the drop-down list.
9. Specify the database server in which you are creating the property file. Choose the appropriate one from the drop-down list.
10. Select FC home and specify the SMS schema details.

 **Note:**


This is the FC HOME folder that needs to be set. Also, it should point to SMS schema. Those versions less than or equal to the current environment are allowed.

Figure 1-4 Schema Details



Oracle FLEXCUBE Investor Servicing **ORACLE®**

Installation Type

FC Home 

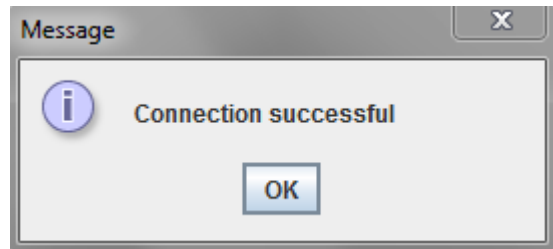
☒ EAR Build ☐ EAR Build Rolled-up

Provide schema details for patch installation.

Name	Value
Username	FCUBS121
Password	••••••••
Service Name	FC1202WI
IP Address	10.110.110.110
Port	1101
TNS Connect Descriptor	FC1102WI

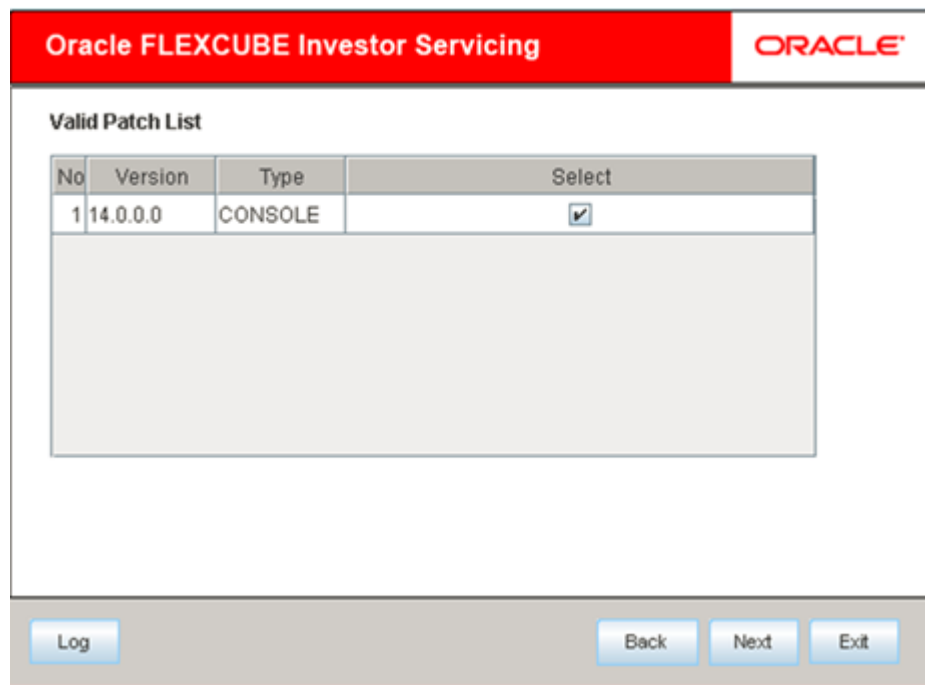
11. Click **Test Connection** to test the connection with the Application server.
On successful connection, the following message is displayed.

Figure 1-5 Information Message on Successful Connection



12. Click **Next** to specify the patch list details.

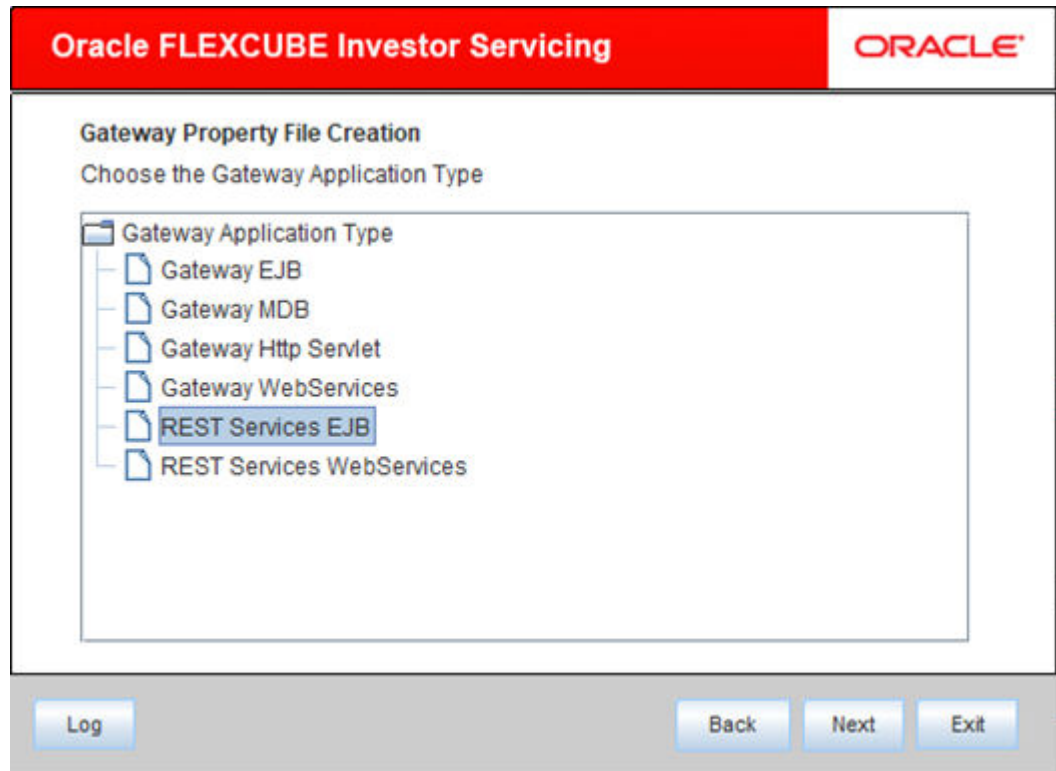
Figure 1-6 Valid Patch list



No	Version	Type	Select
1	14.0.0.0	CONSOLE	<input checked="" type="checkbox"/>

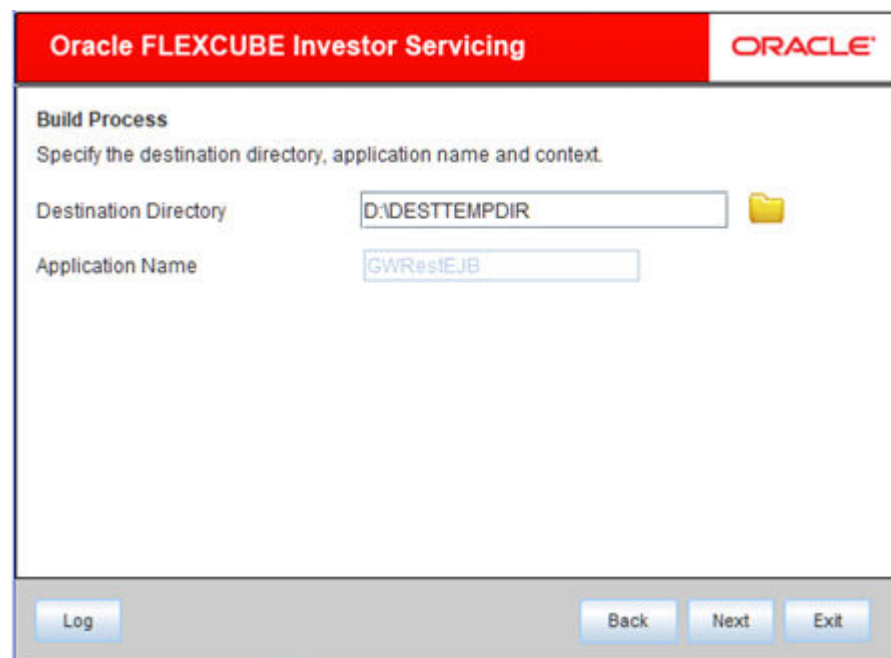
13. Select **REST Services EJB** from Gateway application type.
The following screen is displayed.

Figure 1-7 REST Services EJB



14. Click **Next** to specify destination Directory.
The following screen is displayed.

Figure 1-8 Destination and Application Details



15. On **Build Process** screen, enter the following details.
Refer to the table for Destination Directory and Application Name.

Table 1-2 Destination Directory and Application Name

Field	Description
Destination Directory	Specify the destination directory path.
Application Name	Specify the required application name.

16. Click **Next** to specify the property file for RestEJB.

The following screen is displayed.

Figure 1-9 Property File Path with RESTEJB

17. On **Property File** screen, enter the following details.

Refer to the table for Destination Directory and Application Name.

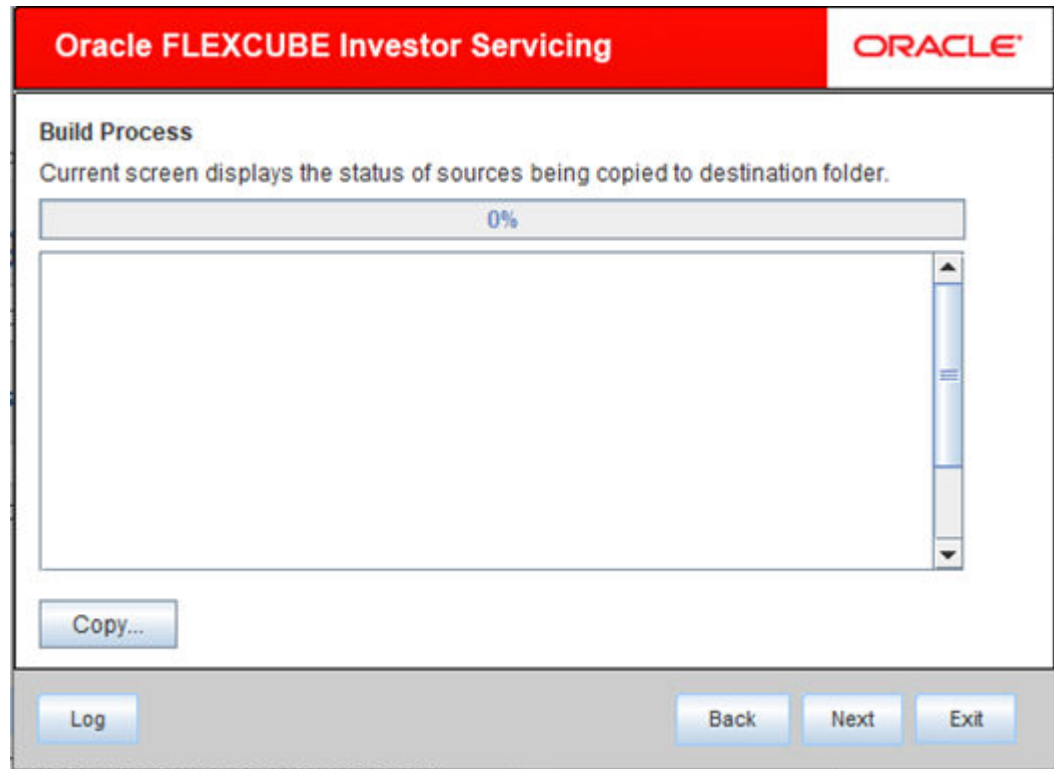
Table 1-3 Property File

Field	Description
Load Property File	Specify the property file path.
Symmetric Key	Specify the symmetric key details.

18. Click **Next** to view the status of sources being copied.

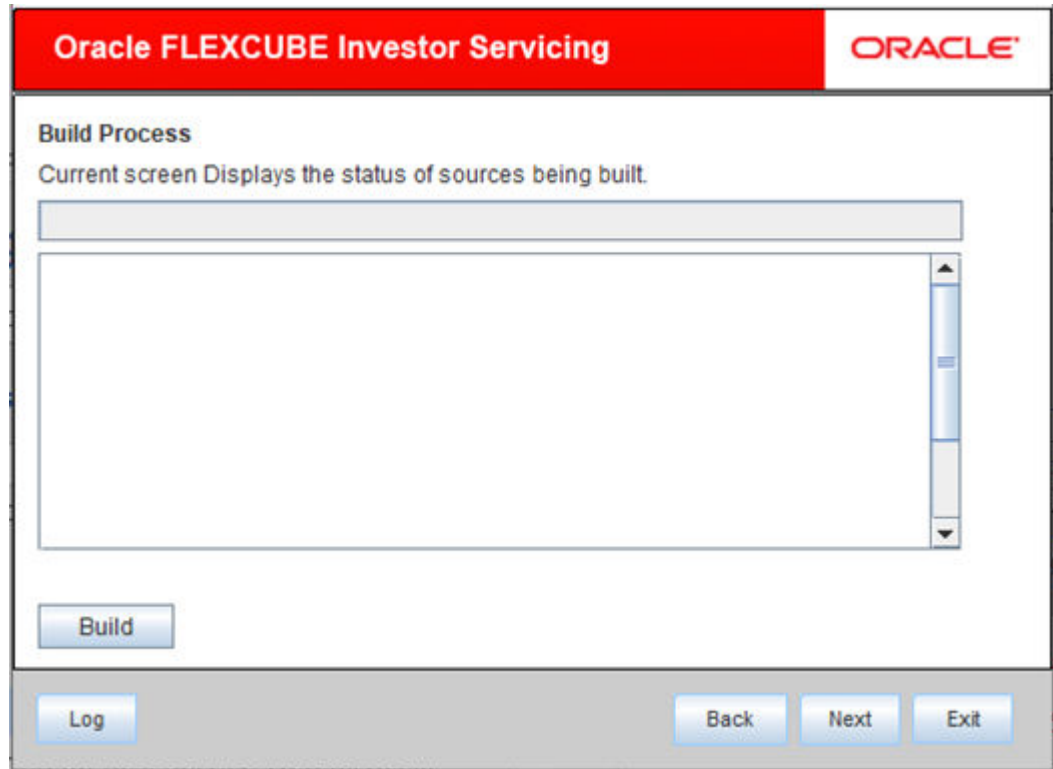
The following screen is displayed.

Figure 1-10 Status of Sources being Copied



19. Click **Copy** button.
The installer copies the files.
20. Click **Next** to view the status of sources being built.
The following screen is displayed.

Figure 1-11 Status of Sources being Built



21. Click **Build** button to start the build process.

The installer builds the source files.

This completes the EAR file generation process. The EAR file will be saved to the destination directory.

1.2 Set Up REST Services WebServices

This topic explains the methods of to set up REST Services WebServices Application.

Create the following REST Services WebServices property files before building the application:

- GW_REST_Prop.properties
- gw_rest_logger.properties

Refer to the topic *RESTService Property File Creation* for details on property file creation.

Follow the steps to build EAR file for Rest Service Webservice Application given below:

1. Start **Oracle FLEXCUBE Universal Installer**.

The **Oracle FLEXCUBE Universal Installer** is displayed.

Figure 1-12 Oracle FLEXCUBE Universal Installer

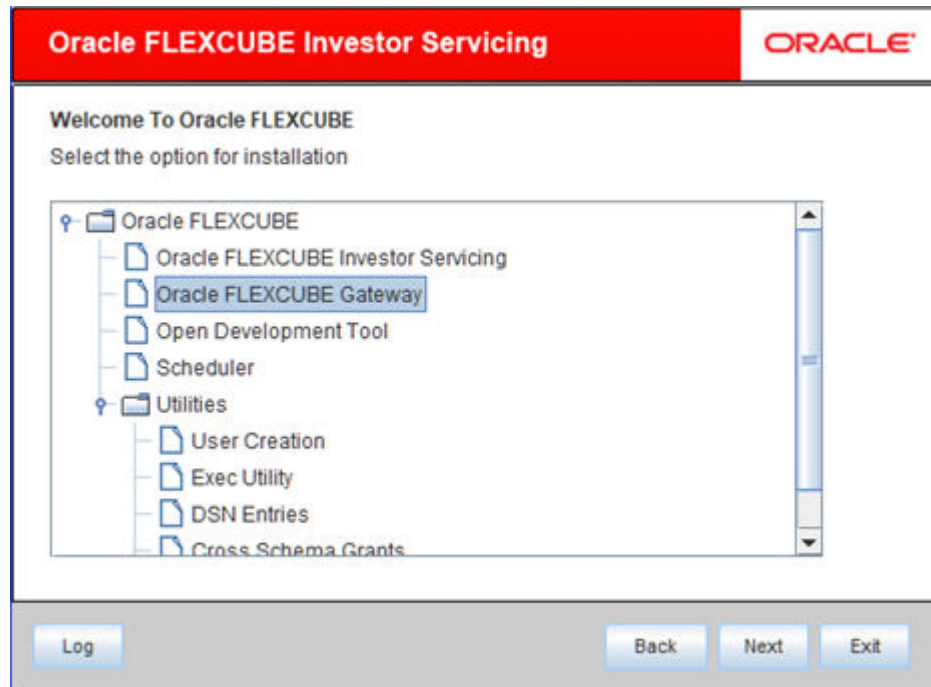
2. On **Oracle FLEXCUBE Universal Installer** screen, enter the following details. Refer to the table for JDK and Oracle Home path.

Table 1-4 JDK and Oracle Home path

Field	Description
JDK Path	Provide Home folder path of JDK1.8.
Oracle Home	Provide home folder path of Oracle Client or Database.
Application Server Home	Provide home folder path of Application Server.
Application Server Location	Select location of the application server either local or remote.

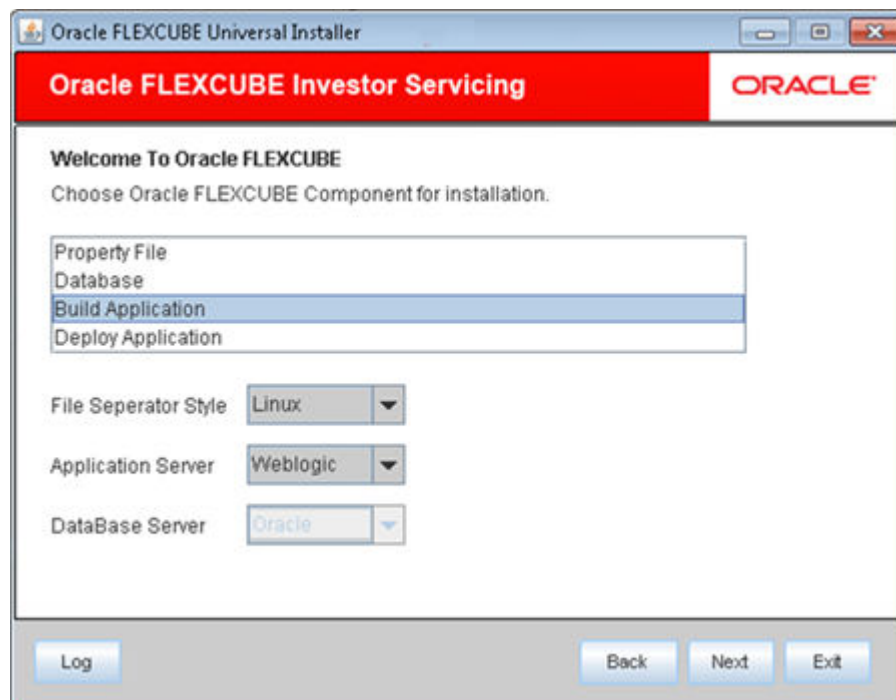
3. Click **Next** to select the option for installation.
4. Select **Oracle FLEXCUBE Gateway** from the lists of **Oracle FLEXCUBE** options. The available options for installation are displayed.

Figure 1-13 Oracle FLEXCUBE_Oracle FLEXCUBE Gateway



5. Click **Next** to choose **Oracle FLEXCUBE** component for installation.

Figure 1-14 Build Application



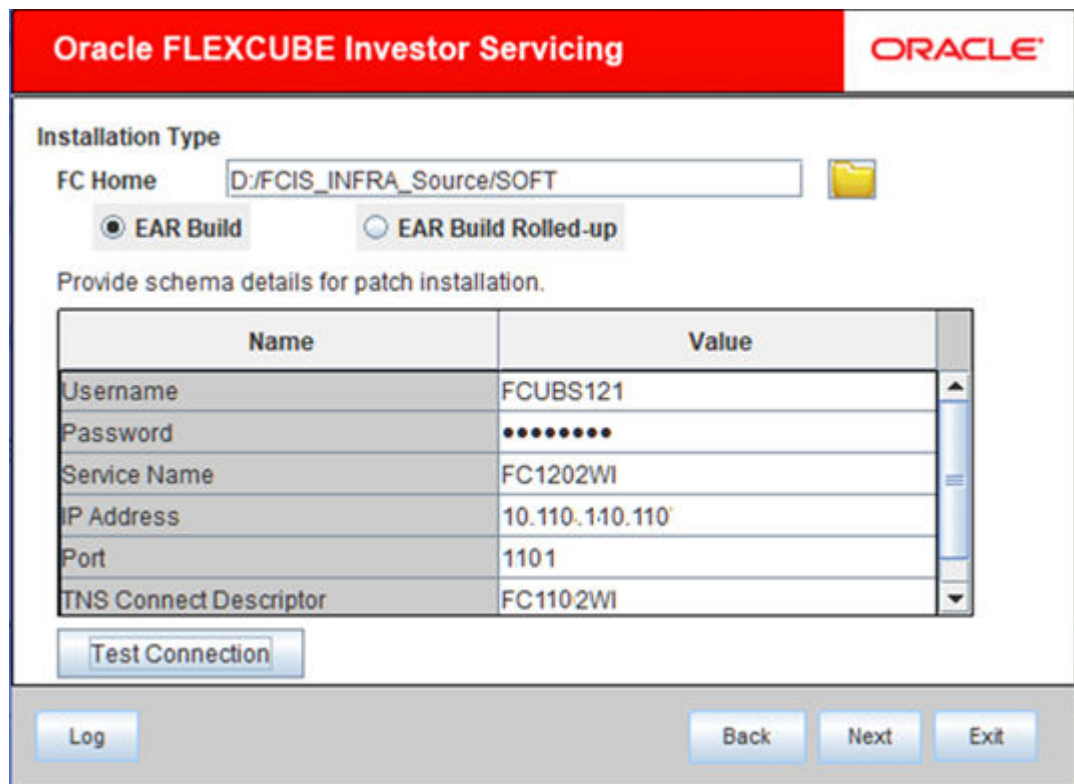
6. Select **Build Application**.
The available options **Property File**, **Database**, **Build Application**, and **Deploy Application** are displayed.

7. Specify the operating system in which you are creating the property file. Choose the appropriate one from the drop-down list.
8. Specify the application server in which you are creating the property file. Choose the appropriate one from the drop-down list.
9. Specify the database server in which you are creating the property file. Choose the appropriate one from the drop-down list.
10. Select FC home and specify the SMS schema details.

 **Note:**


This is the FC HOME folder that needs to be set. Also, it should point to SMS schema. Those versions less than or equal to the current environment are allowed.

Figure 1-15 Schema Details



Oracle FLEXCUBE Investor Servicing **ORACLE®**

Installation Type

FC Home 

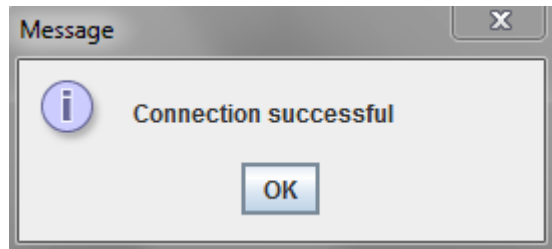
☒ EAR Build ☐ EAR Build Rolled-up

Provide schema details for patch installation.

Name	Value
Username	FCUBS121
Password	••••••••
Service Name	FC1202WI
IP Address	10.110.110.110
Port	1101
TNS Connect Descriptor	FC1102WI

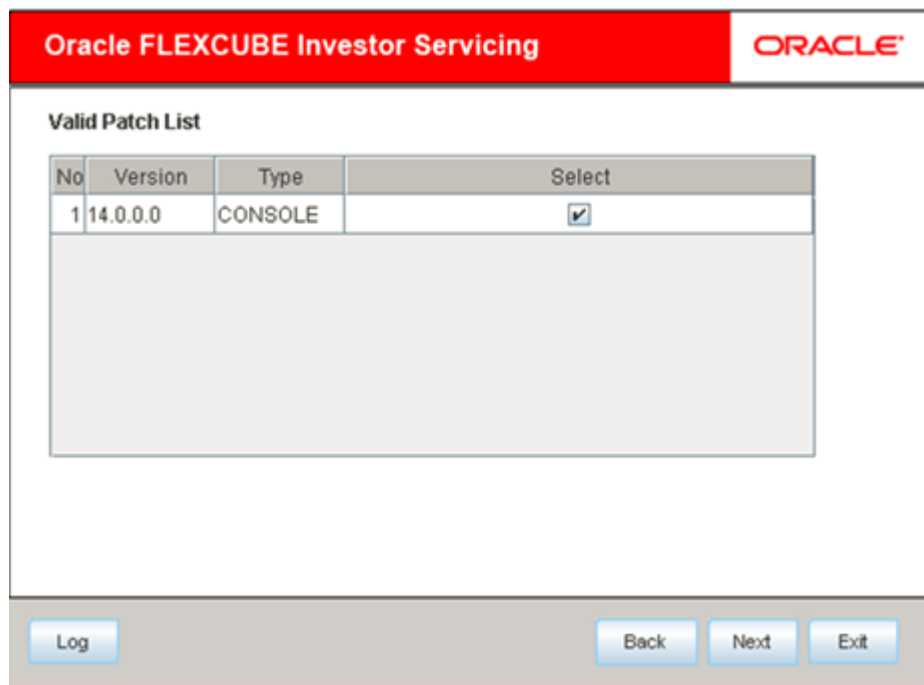
11. Click **Test Connection** to test the connection with the Application server.
On successful connection, the following message is displayed.

Figure 1-16 Information Message on Successful Connection



12. Click **Next** to specify the patch list details.

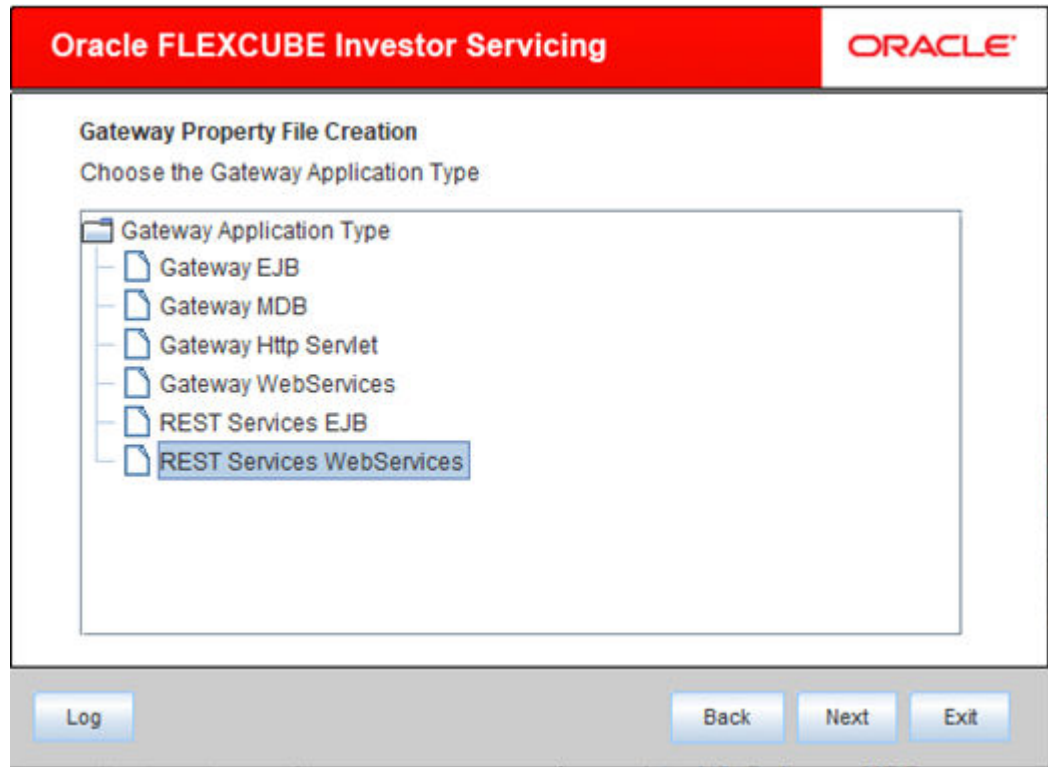
Figure 1-17 Valid Patch list



No	Version	Type	Select
1	14.0.0.0	CONSOLE	<input checked="" type="checkbox"/>

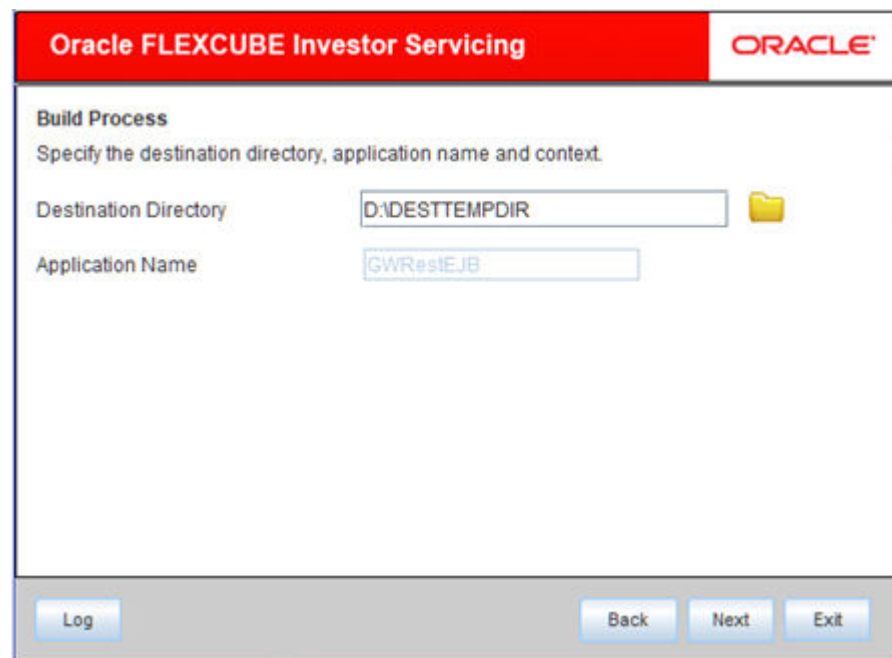
13. Select **REST Services WebServices** from Gateway application type.
The following screen is displayed.

Figure 1-18 REST Services WebServices



14. Click **Next** to specify destination Directory.
The following screen is displayed.

Figure 1-19 Destination and Application Details



15. On **Build Process** screen for Destination Directory and Application Name, enter the following details.

Refer to the table for Destination Directory and Application Name.

Table 1-5 Destination Directory and Application Name

Field	Description
Destination Directory	Specify the destination directory path.
Application Name	Specify the required application name.

16. Click **Next** to specify the property file for RestWebServices.

The following screen is displayed.

Figure 1-20 Property File Path with REST property file

17. On **Property File** screen, enter the following details.

Refer to the table for Property File.

Table 1-6 Property File

Field	Description
Load Property File	Specify the property file path. Note: Do not load the <code>Logger.properties</code> file. The installer will load that file automatically based on the property file.
Symmetric Key	Specify the symmetric key details.

18. Click **Next** to choose modules to be included.

You can select all the services or we can select a particular service.

The following screen is displayed.

Figure 1-21 Gateway Webservices Modules

SI...	Module Name	Service Name	Include	Recomp...
1	LE	PolicyService	<input type="checkbox"/>	<input type="checkbox"/>
2	LE	PolicyStatusChangeService	<input type="checkbox"/>	<input type="checkbox"/>
3	LE	PolicySwitchService	<input type="checkbox"/>	<input type="checkbox"/>
4	LE	PolicyTopupService	<input type="checkbox"/>	<input type="checkbox"/>
5	UT	AuthRepService	<input type="checkbox"/>	<input type="checkbox"/>
6	UT	BlockService	<input type="checkbox"/>	<input type="checkbox"/>
7	UT	BrokerService	<input type="checkbox"/>	<input type="checkbox"/>
8	UT	CustomerService	<input type="checkbox"/>	<input type="checkbox"/>

☐ Select All

Log Back Next Exit

19. Click **Next** to view the status of sources being copied.
The following screen is displayed.

Figure 1-22 Status of Sources being Copied

Build Process

Current screen displays the status of sources being copied to destination folder.

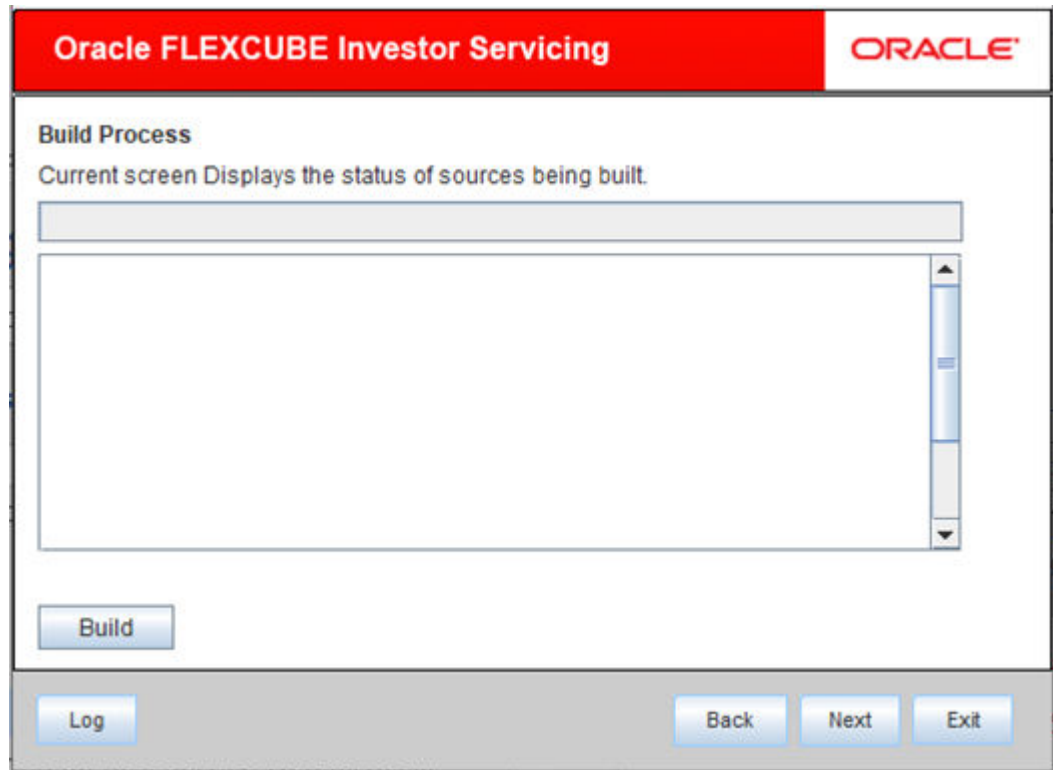
0%

Copy...

Log Back Next Exit

20. Click **Copy** button.
The installer copies the files.
21. Click **Next** to view the status of sources being built.
The following screen is displayed.

Figure 1-23 Status of Sources being Built



22. Click **Build** button to start the build process.
The installer builds the source files.
This completes the EAR file generation process. The EAR file will be saved to the destination directory.

1.3 Post Building Activity

This topic introduces you to the activities to be carried out after setting up the Rest applications.

Rest application looks for the required files inside the **XSD Path** and **Logger Path** provided at the time of Rest Property creation.

Refer to the topic *RESTService Property File Creation* for details on property file creation.

Table 1-7 Gateway Configuration

Path	Files
Rest EJB Logger Path	<p>Logger path should contain the Rest property files generated by the Installer.</p> <p>For example, for RestEJB application, the installer generates the files <code>gw_restejb_logger.properties</code> and <code>GW_RESTEJB_Prop.properties</code>.</p> <p>While creating the property file if you specify the Logger Path as <code>D:/GW_EJB/config/ gw_restejb_logger.properties</code>, then you need to place both the files inside the folder <code>D:/GW_EJB/config/</code>.</p>
Rest WebService Logger Path	<p>Logger path should contain the Rest property files generated by the Installer.</p> <p>For example, for RestEJB application, the installer generates the files <code>gw_rest_logger.properties</code> and <code>GW_REST_Prop.properties</code>.</p> <p>While creating the property file if you specify the Logger Path as <code>D:/GW_EJB/config/ gw_rest_logger.properties</code>, then you need to place both the files inside the folder <code>D:/GW_EJB/config/</code>.</p>

Deployment Using Oracle WebLogic Application Server

Refer to the topic *REST API Services Deployment in WebLogic* for details on the manual deployment using Oracle WebLogic Application Server.

Deployment Using IBM WebSphere Application Server

Refer to the topic *REST API Services Deployment in Websphere* for details on the manual deployment using IBM WebSphere Application Server.