

Oracle® FLEXCUBE Investor Servicing Gateway Application Deployment in Weblogic



Release 14.8.0.0.0
G32091-02
April 2025

ORACLE®

Copyright © 2007, 2025, Oracle and/or its affiliates.

This software and related documentation are provided under a license agreement containing restrictions on use and disclosure and are protected by intellectual property laws. Except as expressly permitted in your license agreement or allowed by law, you may not use, copy, reproduce, translate, broadcast, modify, license, transmit, distribute, exhibit, perform, publish, or display any part, in any form, or by any means. Reverse engineering, disassembly, or decompilation of this software, unless required by law for interoperability, is prohibited.

The information contained herein is subject to change without notice and is not warranted to be error-free. If you find any errors, please report them to us in writing.

If this is software, software documentation, data (as defined in the Federal Acquisition Regulation), or related documentation that is delivered to the U.S. Government or anyone licensing it on behalf of the U.S. Government, then the following notice is applicable:

U.S. GOVERNMENT END USERS: Oracle programs (including any operating system, integrated software, any programs embedded, installed, or activated on delivered hardware, and modifications of such programs) and Oracle computer documentation or other Oracle data delivered to or accessed by U.S. Government end users are "commercial computer software," "commercial computer software documentation," or "limited rights data" pursuant to the applicable Federal Acquisition Regulation and agency-specific supplemental regulations. As such, the use, reproduction, duplication, release, display, disclosure, modification, preparation of derivative works, and/or adaptation of i) Oracle programs (including any operating system, integrated software, any programs embedded, installed, or activated on delivered hardware, and modifications of such programs), ii) Oracle computer documentation and/or iii) other Oracle data, is subject to the rights and limitations specified in the license contained in the applicable contract. The terms governing the U.S. Government's use of Oracle cloud services are defined by the applicable contract for such services. No other rights are granted to the U.S. Government.

This software or hardware is developed for general use in a variety of information management applications. It is not developed or intended for use in any inherently dangerous applications, including applications that may create a risk of personal injury. If you use this software or hardware in dangerous applications, then you shall be responsible to take all appropriate fail-safe, backup, redundancy, and other measures to ensure its safe use. Oracle Corporation and its affiliates disclaim any liability for any damages caused by use of this software or hardware in dangerous applications.

Oracle®, Java, MySQL, and NetSuite are registered trademarks of Oracle and/or its affiliates. Other names may be trademarks of their respective owners.

Intel and Intel Inside are trademarks or registered trademarks of Intel Corporation. All SPARC trademarks are used under license and are trademarks or registered trademarks of SPARC International, Inc. AMD, Epyc, and the AMD logo are trademarks or registered trademarks of Advanced Micro Devices. UNIX is a registered trademark of The Open Group.

This software or hardware and documentation may provide access to or information about content, products, and services from third parties. Oracle Corporation and its affiliates are not responsible for and expressly disclaim all warranties of any kind with respect to third-party content, products, and services unless otherwise set forth in an applicable agreement between you and Oracle. Oracle Corporation and its affiliates will not be responsible for any loss, costs, or damages incurred due to your access to or use of third-party content, products, or services, except as set forth in an applicable agreement between you and Oracle.

Contents

Preface

Purpose	i
Before You Begin	i
Audience	i
Documentation Accessibility	ii
Critical Patches	ii
Diversity and Inclusion	ii
Conventions	ii
Screenshot Disclaimer	iii
Acronyms and Abbreviations	iii

1 Gateway Application Full Deployment

1.1 Gateway EJB Application FULL Deployment	1
1.2 Gateway MDB Application FULL Deployment	13
1.3 Gateway HTTP Servlet Application Full Deployment	24
1.4 Gateway Webservices Application Full Deployment	32

Preface

Oracle FLEXCUBE Investor Servicing is a comprehensive mutual funds automation software from Oracle® Financial Servicing Software Ltd.©.

You can use the system to achieve optimum automation of all your mutual fund investor servicing processes, as it provides guidelines for specific tasks, descriptions of various features and processes, and general information.

This topic contains the following sub-topics:

- [Purpose](#)
- [Before You Begin](#)
- [Audience](#)
- [Documentation Accessibility](#)
- [Critical Patches](#)
- [Diversity and Inclusion](#)
- [Conventions](#)
- [Screenshot Disclaimer](#)
- [Acronyms and Abbreviations](#)

Purpose

This manual is designed to help acquaint you with the installation of **Oracle FLEXCUBE Investor Servicing** application.

Before You Begin

Before you start, refer the **Getting Started User Guide** for common functionalities like login, prerequisites, and system requirements, and so forth.

Audience

This manual is intended for the following User/User Roles:

Table 1 Users and Roles

Users	Roles
Implementation team	Implementation of Oracle FLEXCUBE Investor Servicing
Presales team	Install Oracle FLEXCUBE Investor Servicing for demo purpose

Table 1 (Cont.) Users and Roles

Users	Roles
Bank personnel	Who installs Oracle FLEXCUBE Investor Servicing

Documentation Accessibility

For information about Oracle's commitment to accessibility, visit the Oracle Accessibility Program website at <http://www.oracle.com/pls/topic/lookup?ctx=acc&id=docacc>.

Access to Oracle Support

Oracle customer access to and use of Oracle support services will be pursuant to the terms and conditions specified in their Oracle order for the applicable services.

Critical Patches

Oracle advises customers to get all their security vulnerability information from the Oracle Critical Patch Update Advisory, which is available at [Critical Patches, Security Alerts and Bulletins](#). All critical patches should be applied in a timely manner to ensure effective security, as strongly recommended by [Oracle Software Security Assurance](#).

Diversity and Inclusion

Oracle is fully committed to diversity and inclusion. Oracle respects and values having a diverse workforce that increases thought leadership and innovation. As part of our initiative to build a more inclusive culture that positively impacts our employees, customers, and partners, we are working to remove insensitive terms from our products and documentation. We are also mindful of the necessity to maintain compatibility with our customers' existing technologies and the need to ensure continuity of service as Oracle's offerings and industry standards evolve. Because of these technical constraints, our effort to remove insensitive terms is ongoing and will take time and external cooperation.

Conventions

The following text conventions are used in this document:

Convention	Meaning
boldface	Boldface type indicates graphical user interface elements associated with an action, or terms defined in text or the glossary.
<i>italic</i>	Italic type indicates book titles, emphasis, or placeholder variables for which you supply particular values.
monospace	Monospace type indicates commands within a paragraph, URLs, code in examples, text that appears on the screen, or text that you enter.

Screenshot Disclaimer

Personal information used in the interface or documents is dummy and does not exist in the real world. It is only for reference purposes.

Acronyms and Abbreviations

The list of the acronyms and abbreviations used are as follows:

Table 2 Acronyms and Abbreviations

Abbreviation	Description
FCIS	Oracle FLEXCUBE Investor Servicing
OEM	Oracle Enterprise Manager
EMS	Electronic Messaging Service
EJB	Enterprise Java Bean
MDB	Message Driven Beans

1

Gateway Application Full Deployment

This topic explains the steps to deploy Gateway Application into Weblogic Server.

The methods of deploying Gateway Application include the following sub-topics:

- [Gateway EJB Application FULL Deployment](#)
This topic describes the steps to install Gateway EJB Application into weblogic server in full deployment mode.
- [Gateway MDB Application FULL Deployment](#)
This describes the steps to install Gateway MDB Application into weblogic server in full deployment mode.
- [Gateway HTTP Servlet Application Full Deployment](#)
This topic describes the steps to install Gateway HTTP Servlet Application into weblogic server in full deployment mode.
- [Gateway Webservices Application Full Deployment](#)
This topic describes the steps to install Gateway Webservices Application into weblogic server in full deployment mode.

1.1 Gateway EJB Application FULL Deployment

This topic describes the steps to install Gateway EJB Application into weblogic server in full deployment mode.

1. Start **Oracle FLEXCUBE Universal Installer**.

The **Oracle FLEXCUBE Universal Installer** is displayed.


Figure 1-1 Oracle FLEXCUBE Universal Installer


Oracle FLEXCUBE Universal Installer 12.3.0.0.0


Oracle FLEXCUBE Investor Servicing ORACLE®


Prerequisites

Please specify the JDK and Oracle Home path.

JDK Path 

Oracle Home 

Application Server Home 

Application Server Location 

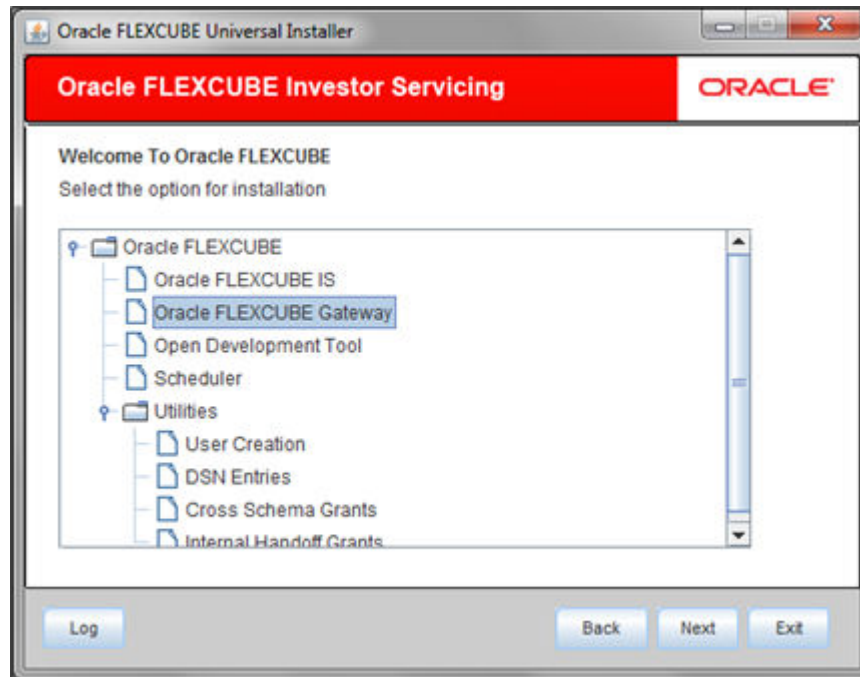
- On **Oracle FLEXCUBE Universal Installer** screen, enter the following details.
Refer to the table for JDK and Oracle Home path.

Table 1-1 JDK and Oracle Home path

Field	Description
JDK Path	Provide Home folder path of JDK1.8.
Oracle Home	Provide home folder path of Oracle Client or Database.
Application Server Home	Provide home folder path of Application Server.
Application Server Location	Select location of the application server either local or remote.

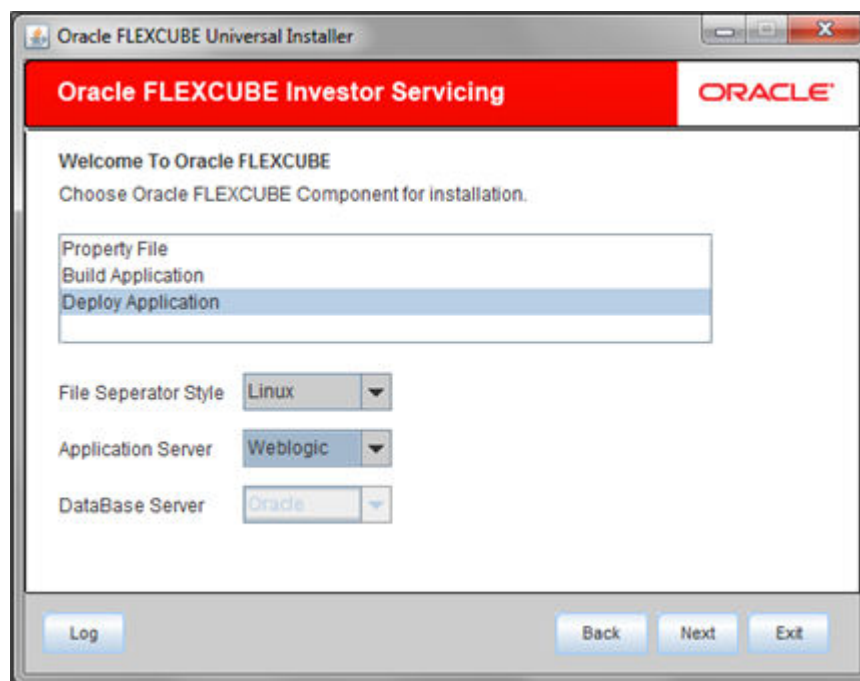
- Click **Next** to select the option for installation.
- Select **Oracle FLEXCUBE Gateway** from the lists of **Oracle FLEXCUBE** options.
The available options for installation are displayed.

Figure 1-2 Oracle FLEXCUBE Universal Installer



5. Click **Next** to choose **Oracle FLEXCUBE** component for installation.
6. Select **Deploy Application**.

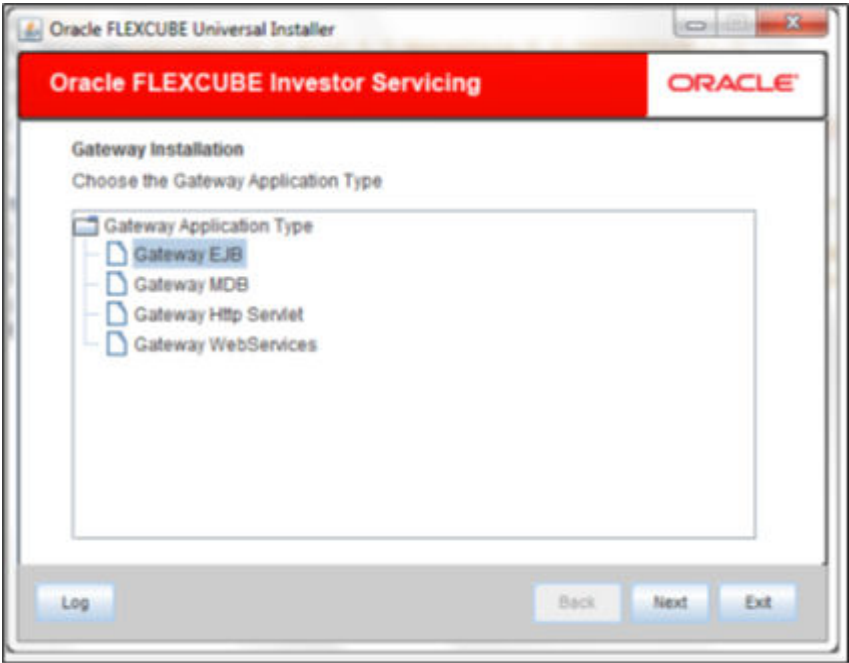
Figure 1-3 Select Deploy Application



7. Choose the appropriate server's **Operating System** from the drop-down.
8. Choose **Weblogic** from the application server drop-down.
9. Click **Next** and select **Gateway EJB** from the **Gateway Application Type**.

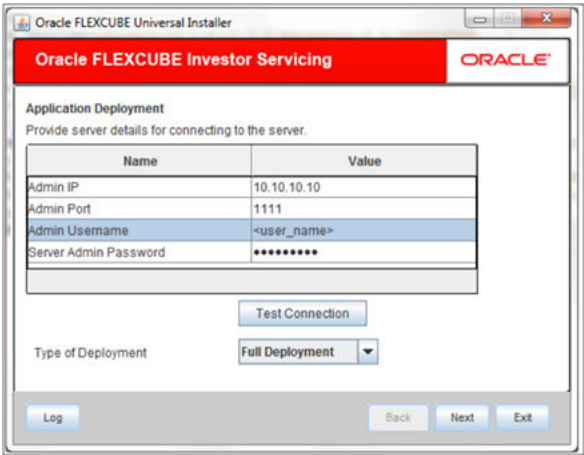
The screen displays the selected Gateway Application Type.

Figure 1-4 Gateway Application Type_Gateway EJB



10. Specify Server details to connect to the server and click **Next**.

Figure 1-5 Gateway Application Type_Gateway EJB_Server



Refer to the table for server details.

Table 1-2 Server details

Field	Description
Admin IP	Provide host address of Admin server.

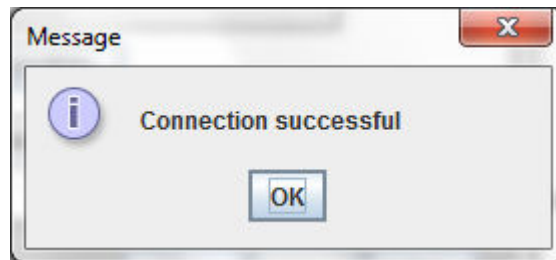
Table 1-2 (Cont.) Server details

Field	Description
Admin Port	Provide port number of Weblogic server.
Admin UserName	Provide the appropriate Admin Username of the Weblogic Application server.
Admin Password	Provide the appropriate Admin Password of the Weblogic Application server.
Type of Deployment	Choose Full Deployment .

11. Click **Test Connection** to test the connection with the Application server.

On successful connection, the following message is displayed.

Figure 1-6 Information Message on Successful Connection



12. Click **Ok** and click **Next** in the installer.


The following screen is displayed.


Figure 1-7 Application Details for Full Deployment

Oracle FLEXCUBE Universal Installer 14.0.0.0.0

Oracle FLEXCUBE Investor Servicing ORACLE®


Application deployment
Provide the Application Details For the Deployment of EAR

EAR Path 

Property File Path 

Application Name

Application Context

Adapter Library Path 

☒ Manage Resources

Security Key for Encryption

Log Back Next Exit

13. Specify Application details to deploy the EAR.

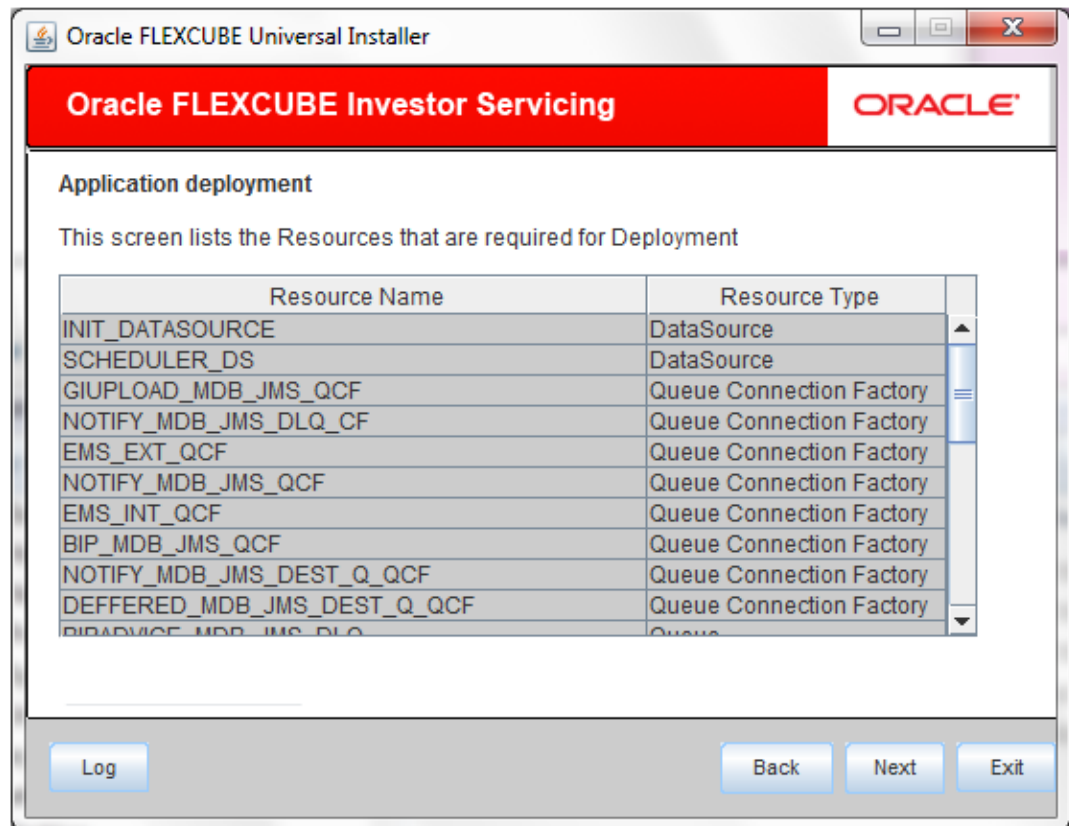
Refer to the table for Application details.

Table 1-3 Application details

Field	Description
EAR Path	Select the application EAR to be deployed using the browse button. Note: The Application EAR path cannot be copied and pasted on to the text box, thereby demanding the use of the Browse button to select the EAR.
Property File Path	Select the appropriate path to the external properties file. If the properties file is internal to the application EAR, it would be fetched on selection of the EAR and will be in a non-editable state.
Application Name	Selection of the EAR would fetch the Application Name and it will be in a non-editable state.
Application Context	Selection of the EAR would fetch the Application Context and it will be in a non-editable state.
Manage Resources	Select this box if resources are to be created along with deployment.

14. Click **Next**. If **Manage Resources** is not checked, you can continue to provide Server Environment details for deployment.
15. Select **Manage Resources** box if resources are to be created along with deployment.

The screen provides a read only list of resources.

Figure 1-8 Resources lists

16. Specify the resource details that are required for deployment.
17. Click **Next** after the resource details are updated.

The following screen is displayed.

Figure 1-9 Resource Details Update

Oracle FLEXCUBE Universal Installer

Oracle FLEXCUBE Investor Servicing ORACLE®

Application deployment

Please select the resource and update the details

Resource ID: **INIT_DATASOURCE**

S.No.	Property Name	Property Value
1	DataSource Driver	oracle.jdbc.OracleDriver
2	DataSource Type	INIT_DATASOURCE
3	Schema UserName	abc
4	Schema PAssword	...
5	IP Address	
6	Port Number	1522
7	Service Name	avast1
8	Initial Capacity	15

Save Changes Test Connection ☐ Modify JDBC url

Log Back Next Exit

Refer to the table for resource details.

Table 1-4 Resource details

Field	Description
Resource ID	Specify Resource ID . Also, you can select the resource from a list of data sources maintained and update the details.
DataSource Driver	Specify the JDBC driver URL with which the connection is to be established. Ex: oracle.jdbc.OracleDriver for Non-XA datasources
DataSource Type	Specify the type of datasource that is to be created, XA or Non-XA.
Schema Username	Specify the username of the schema to which the connection is to be established.
Schema Password	Specify the password of the schema.
IP Address	Specify the host address of the schema.
Port Number	Specify the port number of schema.
Service Name	Specify the service name of schema.
Initial Capacity	It is the number of physical connections that can be created when creating the connection pool in the data source
Maximum Capacity	The maximum number of physical connections that this connection pool can contain.

Table 1-4 (Cont.) Resource details

Field	Description
Capacity Increment	The increment by which this JDBC connection pool's capacity is expanded.
Shrink Frequency	The number of seconds to wait before shrinking a connection pool that has incrementally increased to meet demand.
Connection Reserve Timeout	The number of seconds after which a call to reserve a connection from the connection pool will timeout.

18. Click **Test Connection** to establish connection with required details provided in the table against corresponding value of **Resource ID**.
19. Click **Save Changes** to save the values provided in the table against corresponding value of **Resource ID**.
20. Select **Modify JDBC Url** to modify the provided JDBC url.
If **Modify JDBC Url** is selected, the following screen is displayed.

Figure 1-10 JDBC Url

Oracle FLEXCUBE Universal Installer

Oracle FLEXCUBE Investor Servicing ORACLE®

JDBC Url
JDBC url to get connected to the Application server

Resource ID

jdbc:oracle:thin:@10.10.10.10:1234:Test

Test Connection Save Changes

Log Back Next Exit

21. Specify **Resource ID** and click **Test Connection** to check the connection using the changed Url. If the Url changed is correct, then the successful connection will be made. Click **Save Changes** to save the changed JDBC Url.

Resource ID: It provides the list of all the datasources created. Select the data source for which the **JDBC Url** needs to be modified.

Note: The **JDBC Url** generated from the previous screen will be displayed here. If the user wants to change the **JDBC Url**, it can be changed in the current screen.

22. Specify Server Environment details for deployment.

The **Domain Name** shows the weblogic domain name.

23. On Server Environment details screen, click **Get Details** button.

The list of available servers are displayed. Atleast, one server should be selected to proceed.

Figure 1-11 Server Environment Details for Full Deployment

S.No.	Server Name	Deploy
1	AdminServer	<input type="checkbox"/>
2	ManagedServer	<input type="checkbox"/>
3	ClusterTest	<input type="checkbox"/>
4	AVAST	<input type="checkbox"/>

24. Click **Next** after the server environment details are specified.

The following screen is displayed.

Figure 1-12 Application Deployment Status for Full Deployment

25. Click **Start Deployment** to start the process of application deployment.
The following screen displays the status of Applications being deployed.

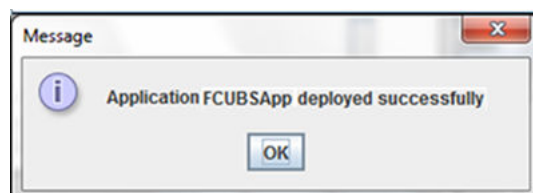
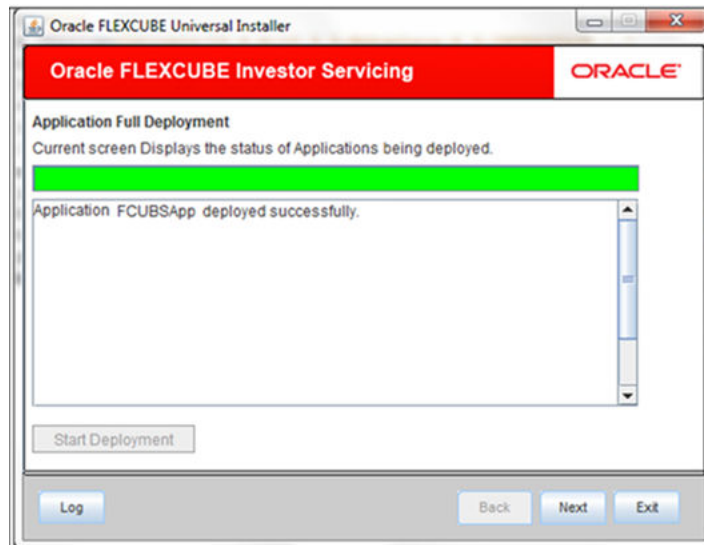
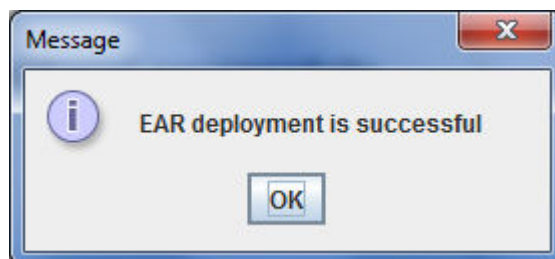
Figure 1-13 Application FCUBSApp deployed successfully

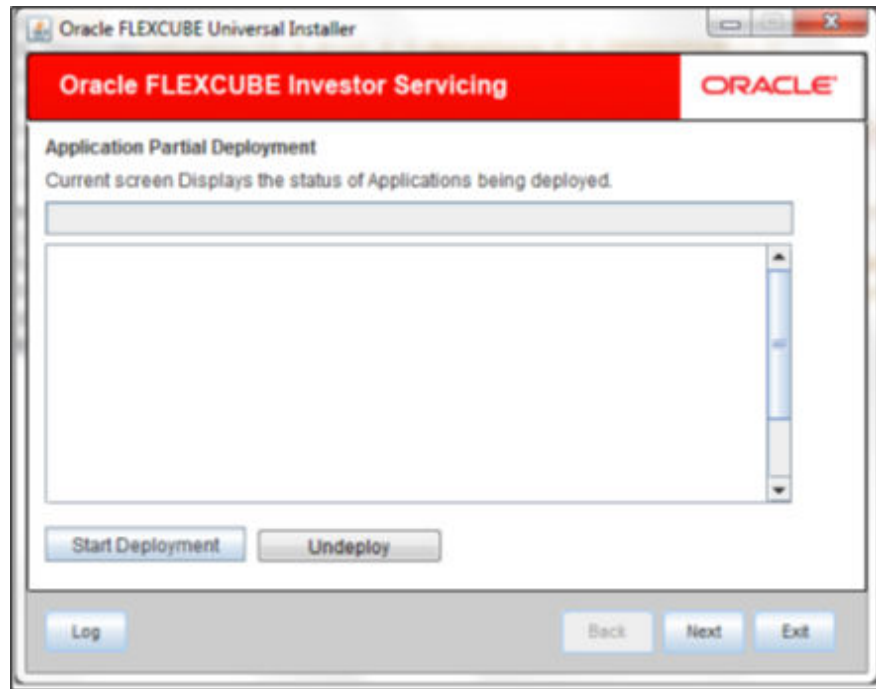
Figure 1-14 Start Application Full Deployment

26. You can view the information message on successful deployment and click **Ok** in the **Message** window.

The following **Message** window is displayed.

Figure 1-15 EAR Deployment Message

27. Click **Undeploy** button for undeploying the partially deployed EAR from the server.
- If the deployment is not successful, the **Undeploy** button will be enabled in the **Application Deployment** status screen.

Figure 1-16 Undeploy

1.2 Gateway MDB Application FULL Deployment

This describes the steps to install Gateway MDB Application into weblogic server in full deployment mode.

1. Start **Oracle FLEXCUBE Universal Installer**.

The **Oracle FLEXCUBE Universal Installer** is displayed.

Figure 1-17 Oracle FLEXCUBE Universal Installer

Oracle FLEXCUBE Universal Installer 12.3.0.0.0

Oracle FLEXCUBE Investor Servicing ORACLE®

Prerequisites

Please specify the JDK and Oracle Home path.

JDK Path

Oracle Home

Application Server Home

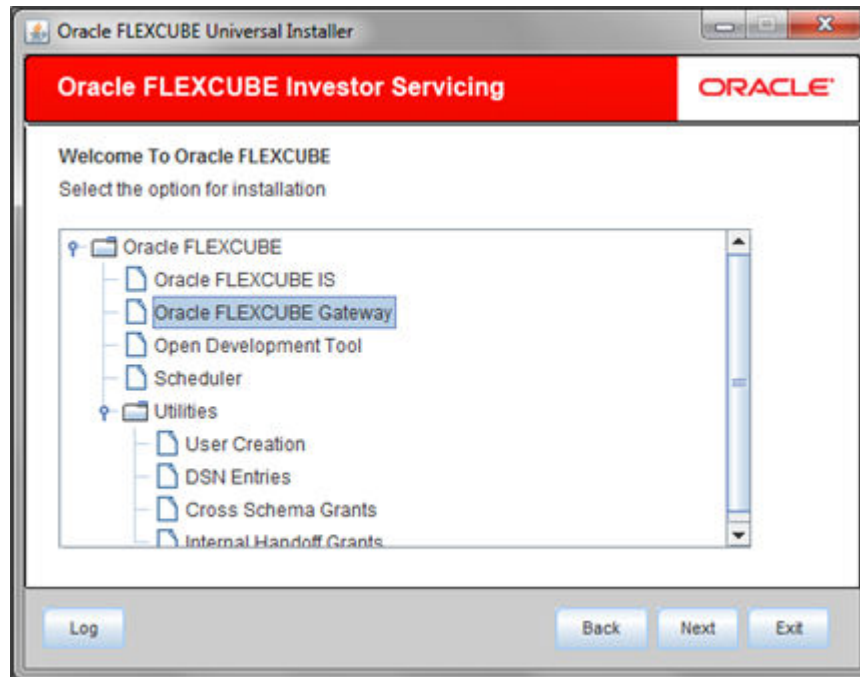
Application Server Location

- On **Oracle FLEXCUBE Universal Installer** screen, enter the following details.
Refer to the table for JDK and Oracle Home path.

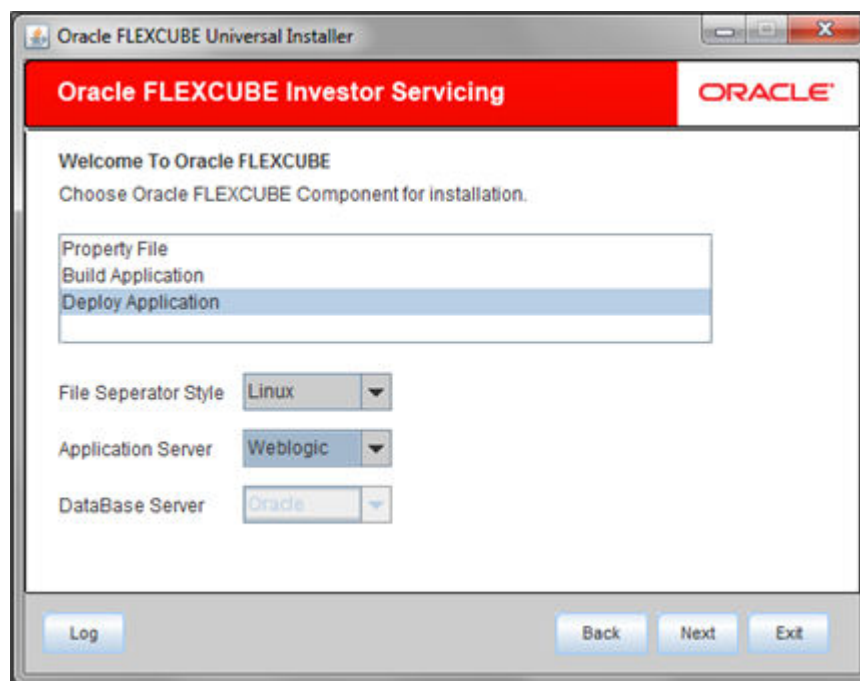
Table 1-5 JDK and Oracle Home path

Field	Description
JDK Path	Provide Home folder path of JDK1.8.
Oracle Home	Provide home folder path of Oracle Client or Database.
Application Server Home	Provide home folder path of Application Server.
Application Server Location	Select location of the application server either local or remote.

- Click **Next** to select the option for installation.
- Select **Oracle FLEXCUBE Gateway** from the lists of **Oracle FLEXCUBE** options.
The available options for installation are displayed.

Figure 1-18 Select Oracle FLEXCUBE Gateway

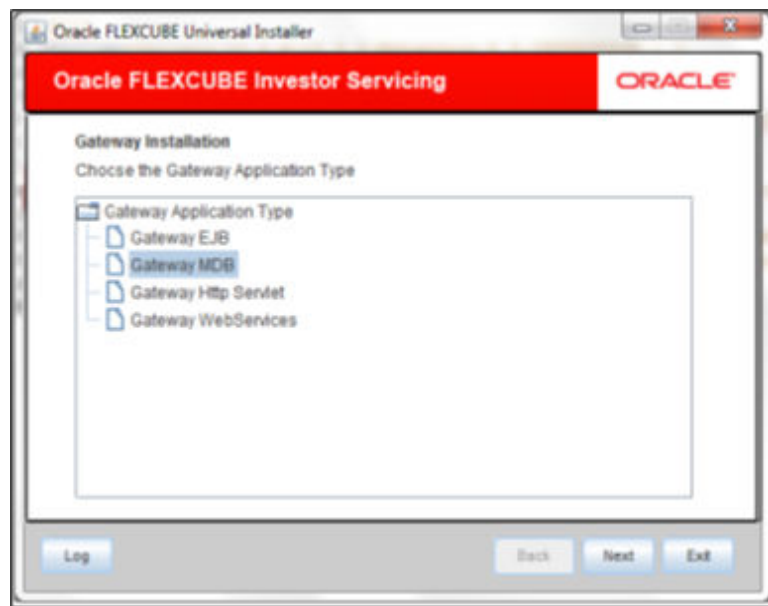
5. Click **Next** to choose **Oracle FLEXCUBE** component for installation.
6. Select **Deploy Application**.

Figure 1-19 Select Deploy Application

7. Choose the appropriate server's **Operating System** from the drop-down.
8. Choose **Weblogic** from the application server drop-down.
9. Click **Next** and select **Gateway MDB** from the **Gateway Application Type**.

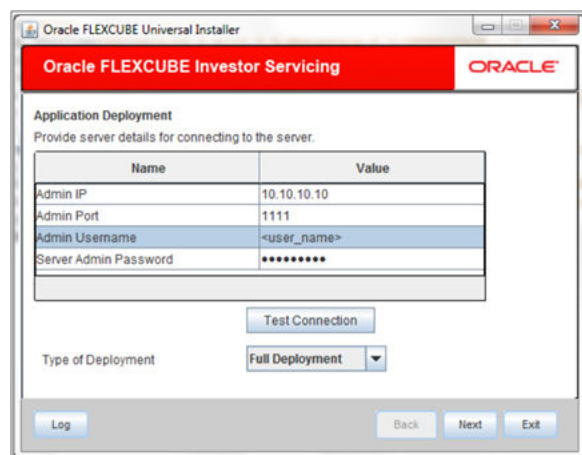
The screen displays the selected Gateway Application Type.

Figure 1-20 Gateway Application Type_Gateway MDB



10. Specify Server details to connect to the server and click **Next**.

Figure 1-21 Gateway Application Type_Gateway EJB_Server



Refer to the table for server details.

Table 1-6 Server details

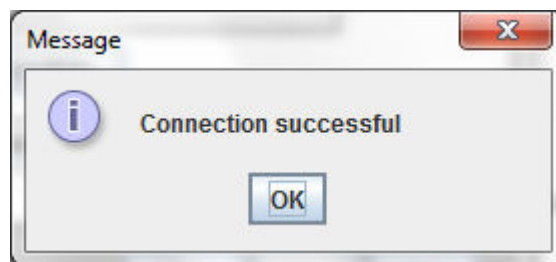
Field	Description
Admin IP	Provide host address of Admin server.
Admin Port	Provide port number of Weblogic server.

Table 1-6 (Cont.) Server details

Field	Description
Admin UserName	Provide the appropriate Admin Username of the Weblogic Application server.
Admin Password	Provide the appropriate Admin Password of the Weblogic Application server.
Type of Deployment	Choose Full Deployment .

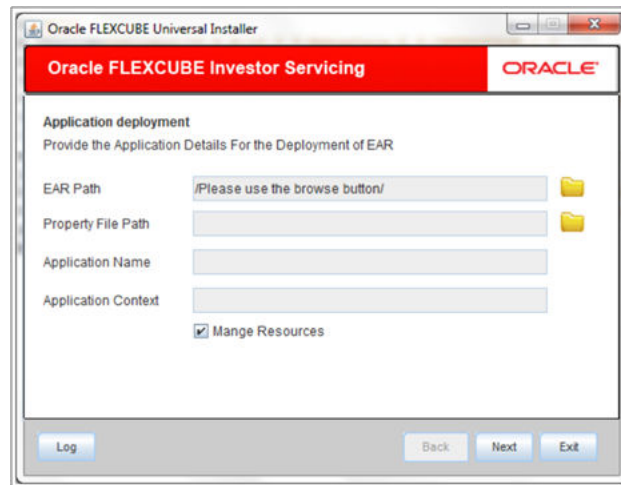
11. Click **Test Connection** to test the connection with the Application server.

On successful connection, the following message is displayed.

Figure 1-22 Information Message on Successful Connection

12. Click **Ok** and click **Next** in the installer.

The following screen is displayed.

Figure 1-23 Application Details for Full Deployment

13. Specify Application details to deploy the EAR.

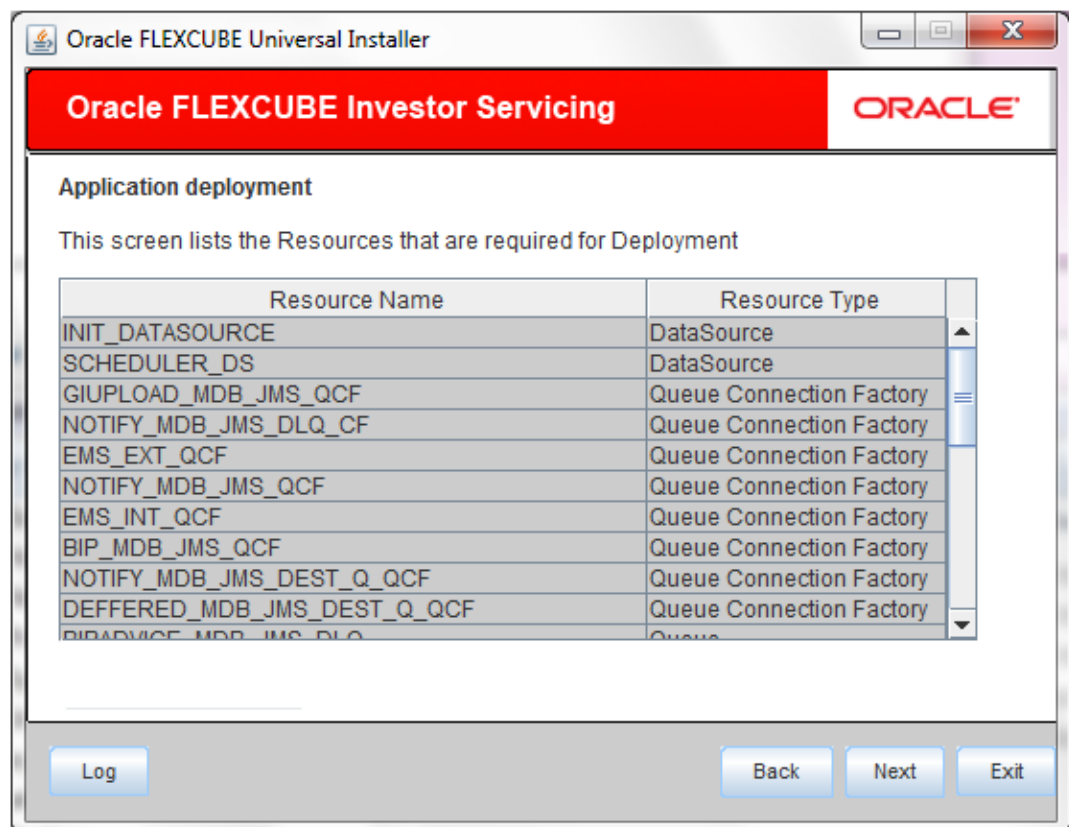
Refer to the table for Application details.

Table 1-7 Application details

Field	Description
EAR Path	Select the application EAR to be deployed using the browse button. Note: The Application EAR path cannot be copied and pasted on to the text box, thereby demanding the use of the Browse button to select the EAR.
Property File Path	Select the appropriate path to the external properties file. If the properties file is internal to the application EAR, it would be fetched on selection of the EAR and will be in a non-editable state.
Application Name	Selection of the EAR would fetch the Application Name and it will be in a non-editable state.
Application Context	Selection of the EAR would fetch the Application Context and it will be in a non-editable state.
Manage Resources	Select this box if resources are to be created along with deployment.

14. Click **Next**. If **Manage Resources** is not checked, you can continue to provide Server Environment details for deployment.
15. Select **Manage Resources** box if resources are to be created along with deployment.
The screen provides a read only list of resources.

Figure 1-24 Resources lists



16. Specify the resource details that are required for deployment.
17. Click **Next** after the resource details are updated.

The following screen is displayed.

Figure 1-25 Resource Details Update

Oracle FLEXCUBE Universal Installer

Oracle FLEXCUBE Investor Servicing ORACLE®

Application deployment

Please select the resource and update the details

Resource ID: **INIT_DATASOURCE**

S.No.	Property Name	Property Value
1	DataSource Driver	oracle.jdbc.OracleDriver
2	DataSource Type	INIT_DATASOURCE
3	Schema Username	abc
4	Schema Password	...
5	IP Address	
6	Port Number	1522
7	Service Name	avast1
8	Initial Capacity	15

Save Changes Test Connection ☐ Modify JDBC url

Log Back Next Exit

Refer to the table for resource details.

Table 1-8 Resource details

Field	Description
Resource ID	Specify Resource ID . Also, you can select the resource from a list of data sources maintained and update the details.
DataSource Driver	Specify the JDBC driver URL with which the connection is to be established. Ex: oracle.jdbc.OracleDriver for Non-XA datasources
DataSource Type	Specify the type of datasource that is to be created, XA or Non-XA.
Schema Username	Specify the username of the schema to which the connection is to be established.
Schema Password	Specify the password of the schema.
IP Address	Specify the host address of the schema.
Port Number	Specify the port number of schema.
Service Name	Specify the service name of schema.

Table 1-8 (Cont.) Resource details

Field	Description
Initial Capacity	It is the number of physical connections that can be created when creating the connection pool in the data source
Maximum Capacity	The maximum number of physical connections that this connection pool can contain.
Capacity Increment	The increment by which this JDBC connection pool's capacity is expanded.
Shrink Frequency	The number of seconds to wait before shrinking a connection pool that has incrementally increased to meet demand.
Connection Reserve Timeout	The number of seconds after which a call to reserve a connection from the connection pool will timeout.

18. Click **Test Connection** to establish connection with required details provided in the table against corresponding value of **Resource ID**.
19. Click **Save Changes** to save the values provided in the table against corresponding value of **Resource ID**.
20. Select **Modify JDBC Url** to modify the provided JDBC url.

If **Modify JDBC Url** is selected, the following screen is displayed.

Figure 1-26 JDBC Url

Oracle FLEXCUBE Universal Installer

Oracle FLEXCUBE Investor Servicing ORACLE®

JDBC Url
JDBC url to get connected to the Application server

Resource ID

jdbc:oracle:thin:@10.10.10.10:1234:Test

21. Specify **Resource ID** and click **Test Connection** to check the connection using the changed Url. If the Url changed is correct, then the successful connection will be made. Click **Save Changes** to save the changed JDBC Url.

Resource ID: It provides the list of all the datasources created. Select the data source for which the **JDBC Url** needs to be modified.

Note: The **JDBC Url** generated from the previous screen will be displayed here. If the user wants to change the **JDBC Url**, it can be changed in the current screen.

22. Specify Server Environment details for deployment.

The **Domain Name** shows the weblogic domain name.

23. On Server Environment details screen, click **Get Details** button.

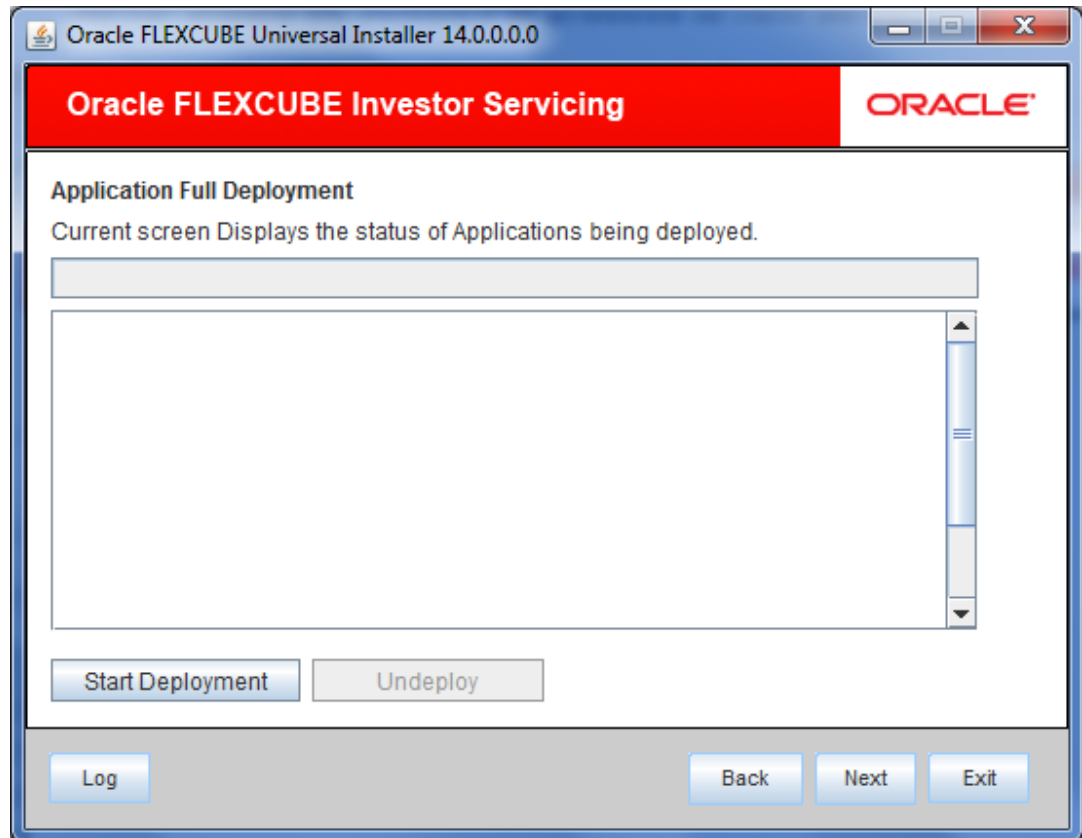
The list of available servers are displayed. Atleast, one server should be selected to proceed.

Figure 1-27 Server Environment Details for Full Deployment

S.No.	Server Name	Deploy
1	AdminServer	<input type="checkbox"/>
2	ManagedServer	<input type="checkbox"/>
3	ClusterTest	<input type="checkbox"/>
4	AVAST	<input type="checkbox"/>

24. Click **Next** after the server environment details are specified.

The following screen is displayed.

Figure 1-28 Application Deployment Status for Full Deployment

25. Click **Start Deployment** to start the process of application deployment.
The following screen displays the status of Applications being deployed.

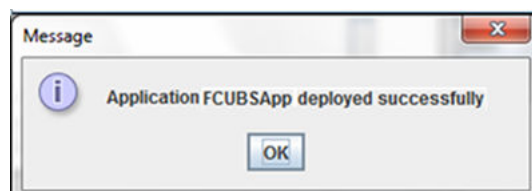
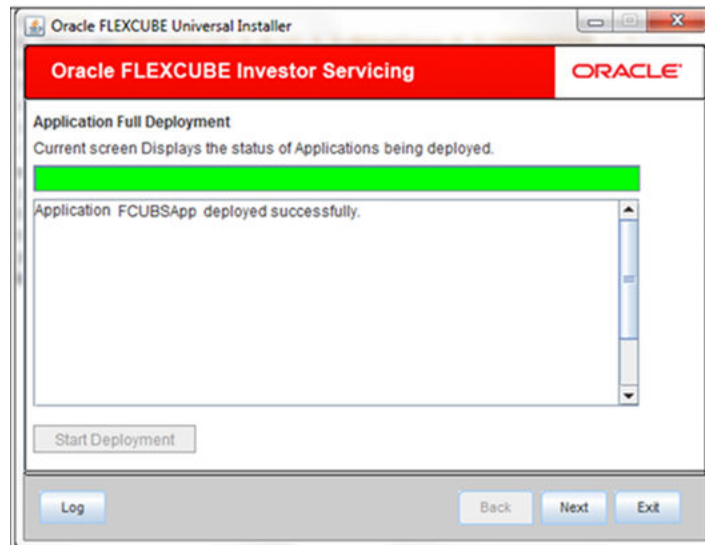
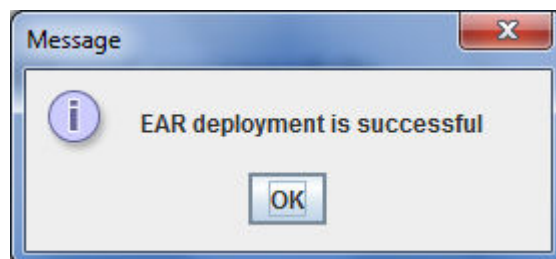
Figure 1-29 Application FCUBSApp deployed successfully

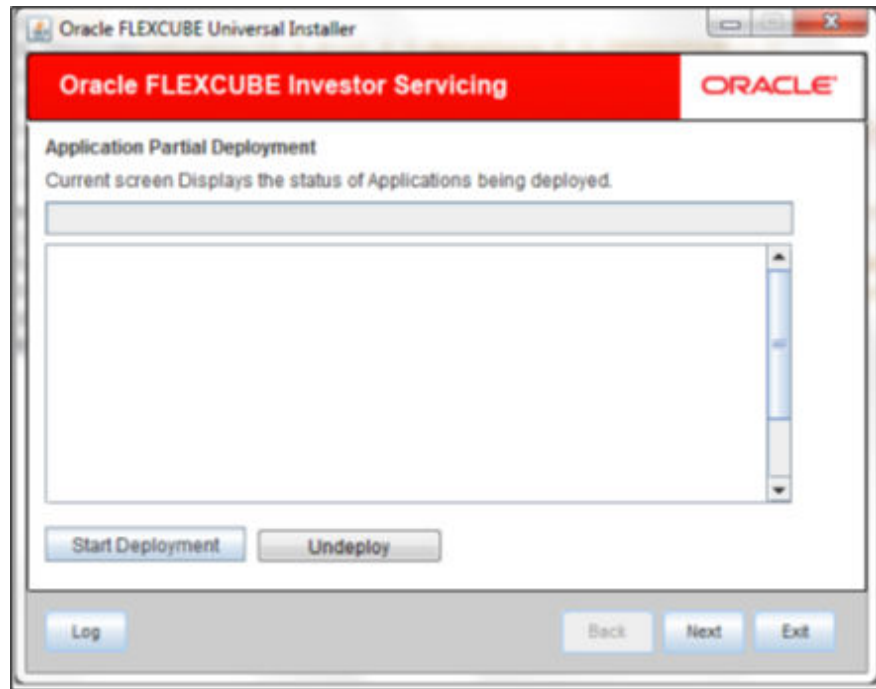
Figure 1-30 Start Application Full Deployment

26. You can view the information message on successful deployment and click **Ok** in the **Message** window.

The following **Message** window is displayed.

Figure 1-31 EAR Deployment Message

27. Click **Undeploy** button for undeploying the partially deployed EAR from the server.
- If the deployment is not successful, the **Undeploy** button will be enabled in the **Application Deployment** status screen.

Figure 1-32 Undeploy

1.3 Gateway HTTP Servlet Application Full Deployment

This topic describes the steps to install Gateway HTTP Servlet Application into weblogic server in full deployment mode.

1. Start **Oracle FLEXCUBE Universal Installer**.

The **Oracle FLEXCUBE Universal Installer** is displayed.

Figure 1-33 Oracle FLEXCUBE Universal Installer

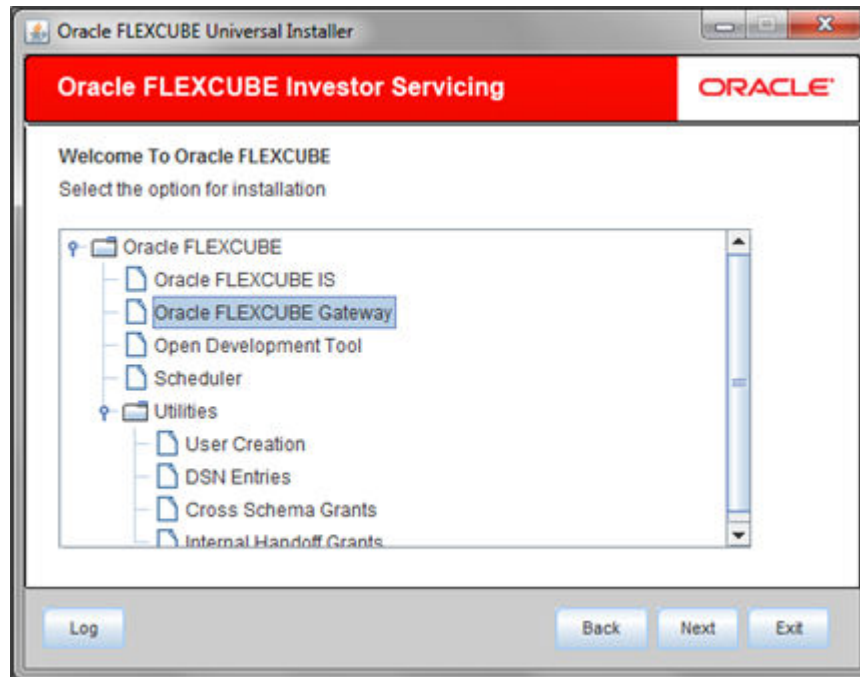
2. On **Oracle FLEXCUBE Universal Installer** screen, enter the following details.
Refer to the table for JDK and Oracle Home path.

Table 1-9 JDK and Oracle Home path

Field	Description
JDK Path	Provide Home folder path of JDK1.8.
Oracle Home	Provide home folder path of Oracle Client or Database.
Application Server Home	Provide home folder path of Application Server.
Application Server Location	Select location of the application server either local or remote.

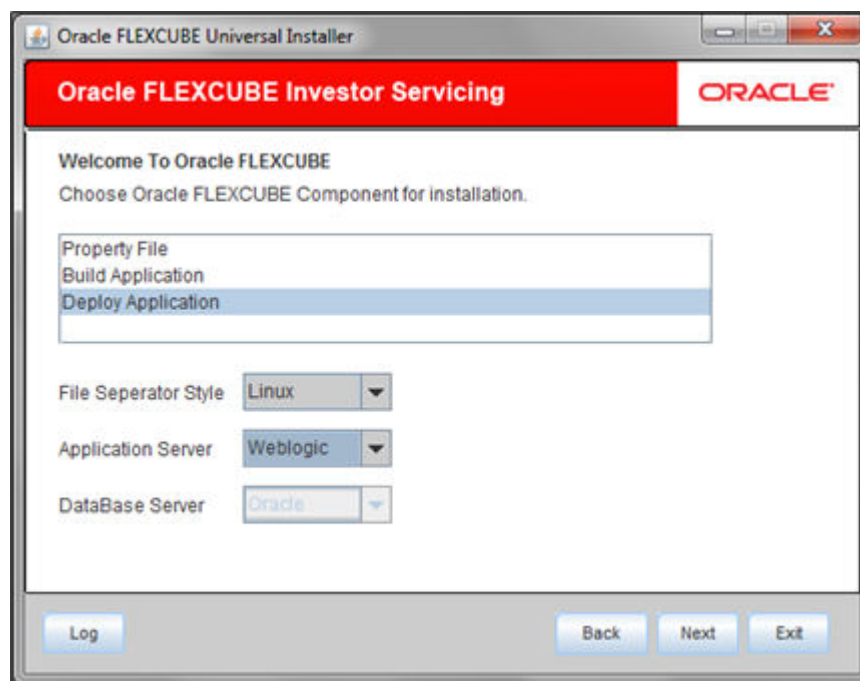
3. Click **Next** to select the option for installation.
4. Select **Oracle FLEXCUBE Gateway** from the lists of **Oracle FLEXCUBE** options.
The available options for installation are displayed.

Figure 1-34 Select Oracle FLEXCUBE Gateway



5. Click **Next** to choose **Oracle FLEXCUBE** component for installation.
6. Select **Deploy Application**.

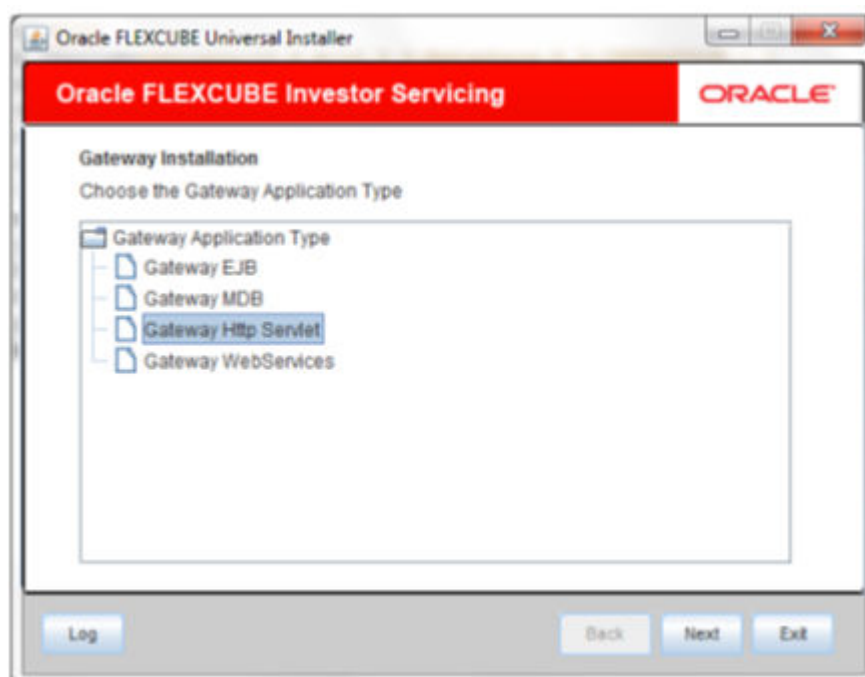
Figure 1-35 Select Deploy Application



7. Choose the appropriate server's **Operating System** from the drop-down.
8. Choose **Weblogic** from the application server drop-down.
9. Click **Next** and select **Gateway Http Servlet** from the **Gateway Application Type**.

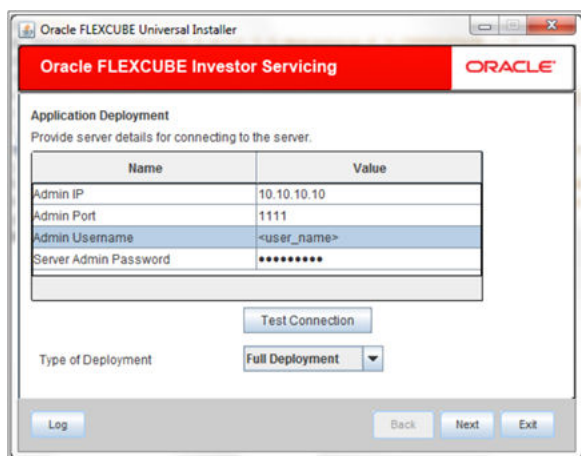
The screen displays the selected Gateway Application Type.

Figure 1-36 Gateway Application Type_Gateway Http Servlet



10. Specify Server details to connect to the server and click **Next**.

Figure 1-37 Gateway Application Type_Gateway EJB_Server



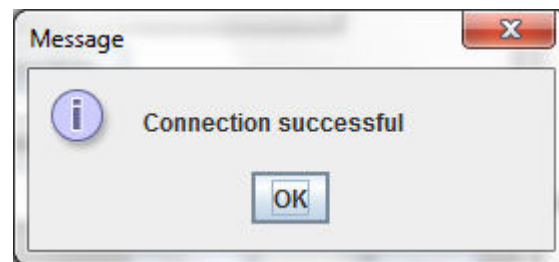
Refer to the table for server details.

Table 1-10 Server details

Field	Description
Admin IP	Provide host address of Admin server.
Admin Port	Provide port number of Weblogic server.
Admin UserName	Provide the appropriate Admin Username of the Weblogic Application server.
Admin Password	Provide the appropriate Admin Password of the Weblogic Application server.
Type of Deployment	Choose Full Deployment .

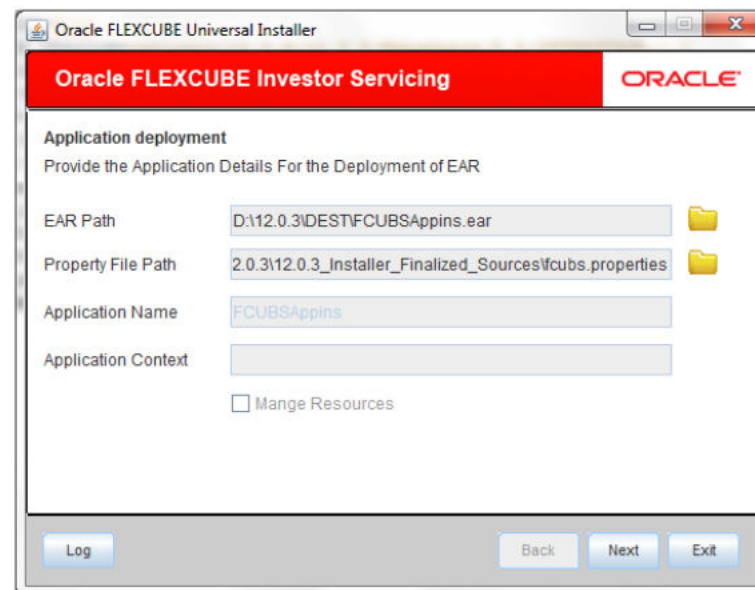
11. Click **Test Connection** to test the connection with the Application server.

On successful connection, the following message is displayed.

Figure 1-38 Information Message on Successful Connection

12. Click **Ok** and click **Next** in the installer.

The following screen is displayed.

Figure 1-39 Application Details for Full Deployment

13. Specify Application details to deploy the EAR.

Refer to the table for Application details.

Table 1-11 Application details

Field	Description
EAR Path	Select the application EAR to be deployed using the browse button. Note: The Application EAR path cannot be copied and pasted on to the text box, thereby demanding the use of the Browse button to select the EAR.
Property File Path	Select the appropriate path to the external properties file. If the properties file is internal to the application EAR, it would be fetched on selection of the EAR and will be in a non-editable state.
Application Name	This field is not applicable.
Application Context	This field is not applicable.
Manage Resources	This field is not supported.

14. Click **Next** to specify Server Environment details for deployment.

The **Domain Name** shows the weblogic domain name.

15. On Server Environment details screen, click **Get Details** button.

The list of available servers are displayed. Atleast, one server should be selected to proceed.

Figure 1-40 Server Environment Details for Full Deployment

Oracle FLEXCUBE Universal Installer

Oracle FLEXCUBE Investor Servicing ORACLE®

Application Full Deployment
Specify Server environment details for deployment

Domain Name:

S.No.	Server Name	Deploy
1	AdminServer	<input type="checkbox"/>
2	ManagedServer	<input type="checkbox"/>
3	ClusterTest	<input type="checkbox"/>
4	AVAST	<input type="checkbox"/>

16. Click **Next** after the server environment details are specified.

The following screen is displayed.

Figure 1-41 Application Deployment Status for Full Deployment

17. Click **Start Deployment** to start the process of application deployment.
The following screen displays the status of Applications being deployed.

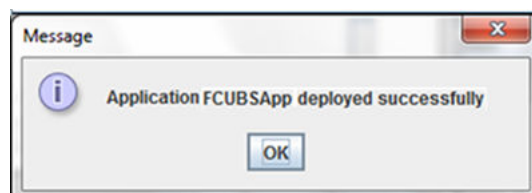
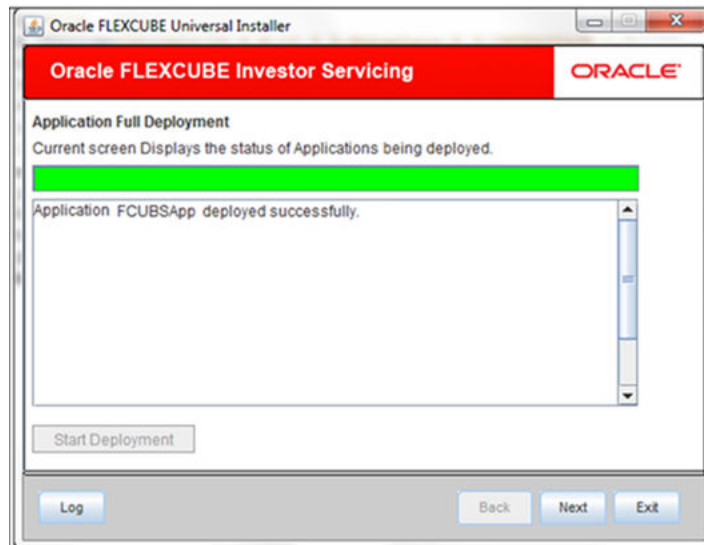
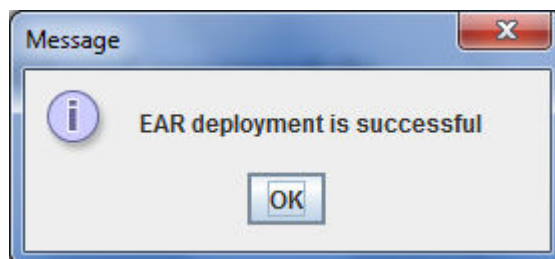
Figure 1-42 Application FCUBSApp deployed successfully

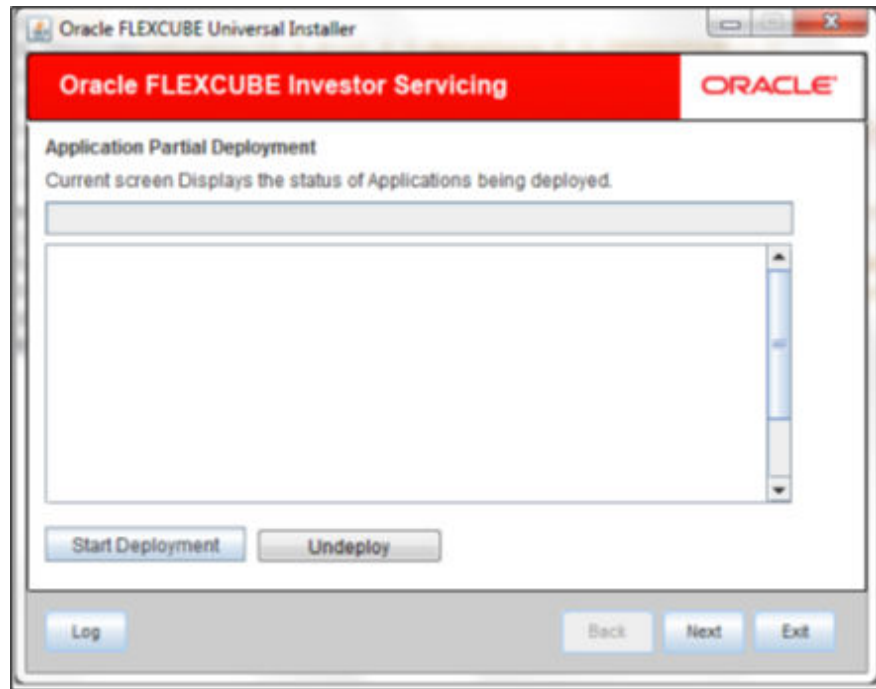
Figure 1-43 Start Application Full Deployment

18. You can view the information message on successful deployment and click **Ok** in the **Message** window.

The following **Message** window is displayed.

Figure 1-44 EAR Deployment Message

19. Click **Undeploy** button for undeploying the partially deployed EAR from the server.
If the deployment is not successful, the **Undeploy** button will be enabled in the **Application Deployment** status screen.

Figure 1-45 Undeploy

1.4 Gateway Webservices Application Full Deployment

This topic describes the steps to install Gateway Webservices Application into weblogic server in full deployment mode.

1. Start **Oracle FLEXCUBE Universal Installer**.

The **Oracle FLEXCUBE Universal Installer** is displayed.

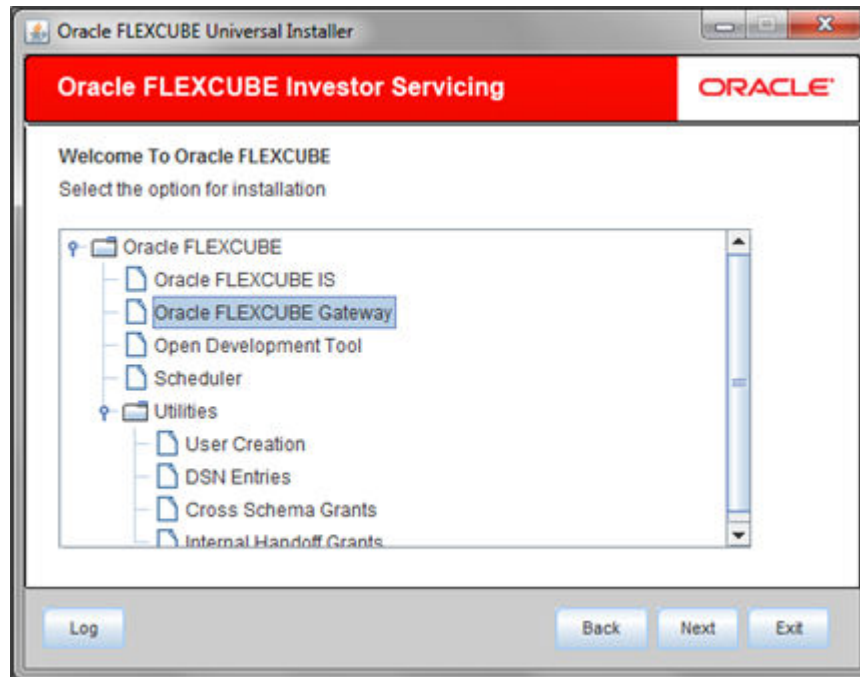
Figure 1-46 Oracle FLEXCUBE Universal Installer

2. On **Oracle FLEXCUBE Universal Installer** screen, enter the following details.
Refer to the table for JDK and Oracle Home path.

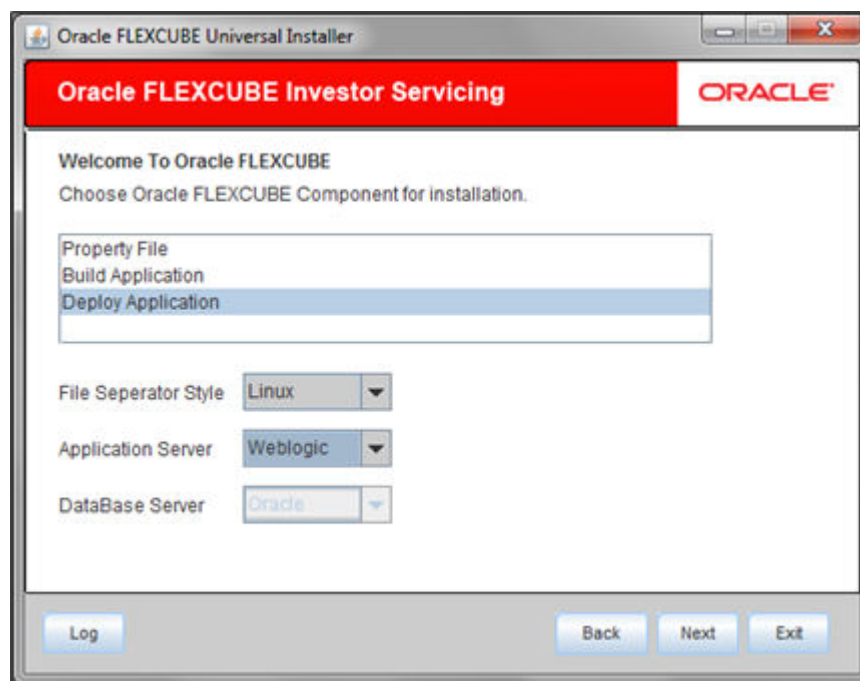
Table 1-12 JDK and Oracle Home path

Field	Description
JDK Path	Provide Home folder path of JDK1.8.
Oracle Home	Provide home folder path of Oracle Client or Database.
Application Server Home	Provide home folder path of Application Server.
Application Server Location	Select location of the application server either local or remote.

3. Click **Next** to select the option for installation.
4. Select **Oracle FLEXCUBE Gateway** from the lists of **Oracle FLEXCUBE** options.
The available options for installation are displayed.

Figure 1-47 Select Oracle FLEXCUBE Gateway

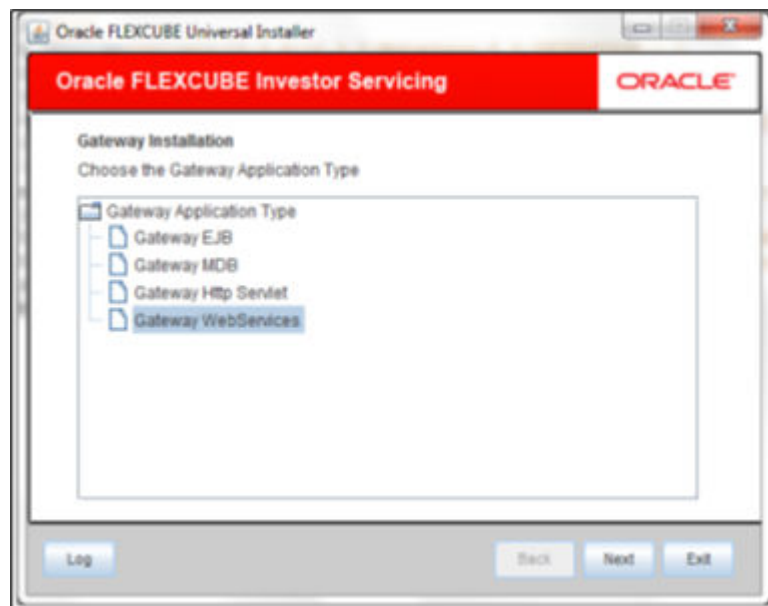
5. Click **Next** to choose **Oracle FLEXCUBE** component for installation.
6. Select **Deploy Application**.

Figure 1-48 Select Deploy Application

7. Choose the appropriate server's **Operating System** from the drop-down.
8. Choose **Weblogic** from the application server drop-down.
9. Click **Next** and select **Gateway WebServices** from the **Gateway Application Type**.

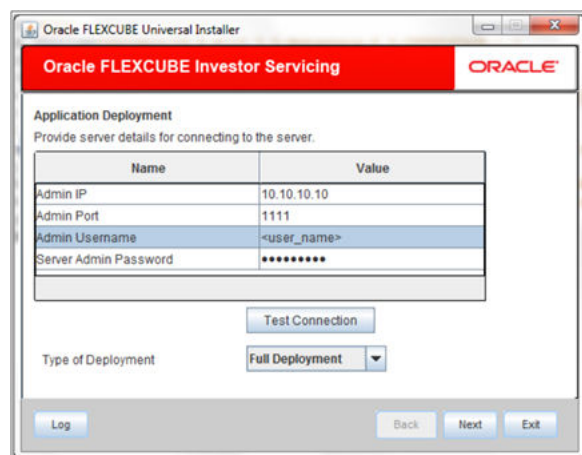
The screen displays the selected Gateway Application Type.

Figure 1-49 Gateway Application Type_Gateway WebServices



10. Specify Server details to connect to the server and click **Next**.

Figure 1-50 Gateway Application Type_Gateway EJB_Server



Refer to the table for server details.

Table 1-13 Server details

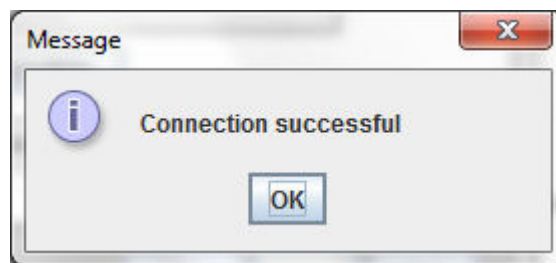
Field	Description
Admin IP	Provide host address of Admin server.
Admin Port	Provide port number of Weblogic server.

Table 1-13 (Cont.) Server details

Field	Description
Admin UserName	Provide the appropriate Admin Username of the Weblogic Application server.
Admin Password	Provide the appropriate Admin Password of the Weblogic Application server.
Type of Deployment	Choose Full Deployment .

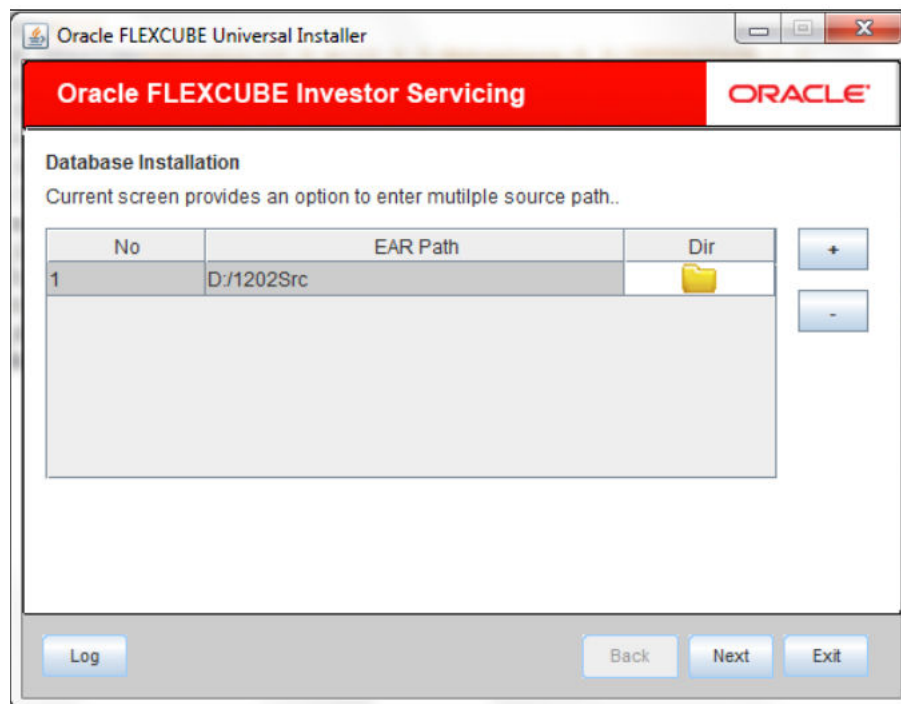
11. Click **Test Connection** to test the connection with the Application server.

On successful connection, the following message is displayed.

Figure 1-51 Information Message on Successful Connection

12. Click **Ok** and click **Next** in the installer.

The following screen is displayed.

Figure 1-52 Application Details for Full Deployment

13. Specify Application details to deploy the EAR.

Refer to the table for Application details.

Table 1-14 Application details

Field	Description
EAR Path	Select the application EAR to be deployed using the browse button. Note: The Application EAR path cannot be copied and pasted on to the text box, thereby demanding the use of the Browse button to select the EAR.
Property File Path	Select the appropriate path to the external properties file. If the properties file is internal to the application EAR, it would be fetched on selection of the EAR and will be in a non-editable state.
Application Name	This field is not applicable.
Application Context	This field is not applicable.
Manage Resources	This field is not supported.

14. Click **Next** to specify Server Environment details for deployment.

The **Domain Name** shows the weblogic domain name.

15. On Server Environment details screen, click **Get Details** button.

The list of available servers are displayed. Atleast, one server should be selected to proceed.

Figure 1-53 Server Environment Details for Full Deployment

Oracle FLEXCUBE Universal Installer

Oracle FLEXCUBE Investor Servicing ORACLE®

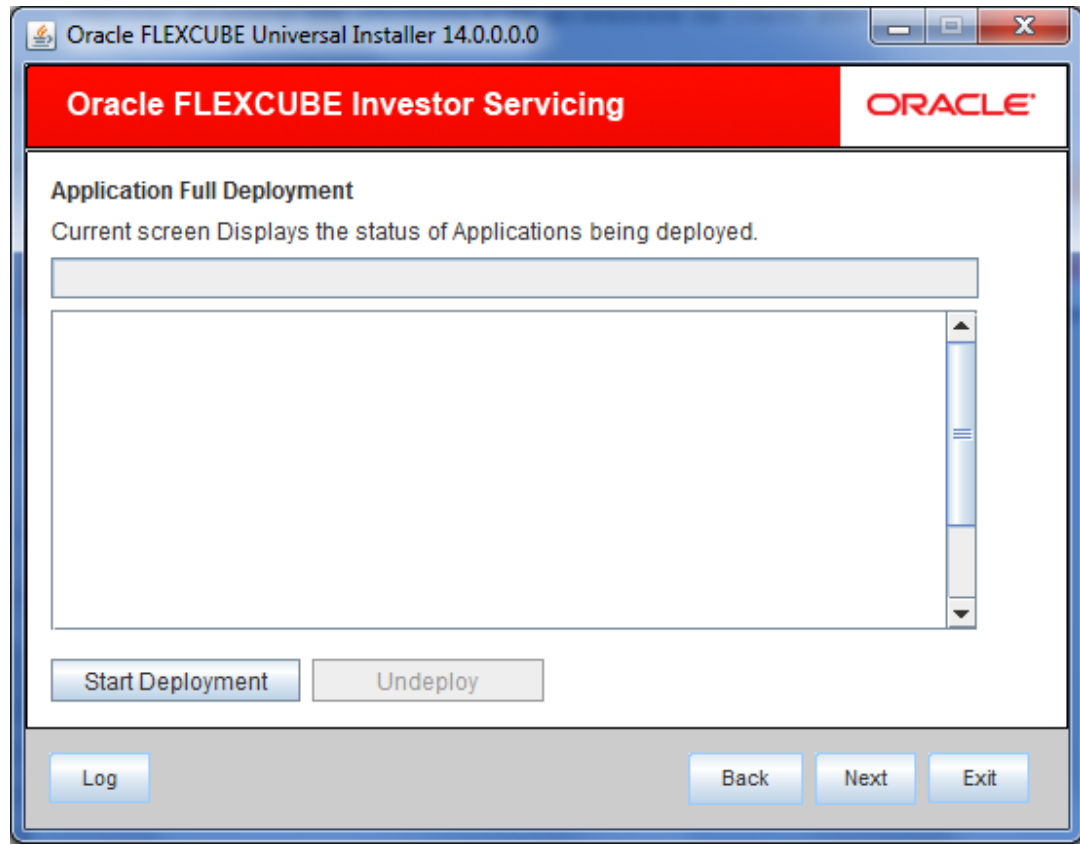
Application Full Deployment
Specify Server environment details for deployment

Domain Name:

S.No.	Server Name	Deploy
1	AdminServer	<input type="checkbox"/>
2	ManagedServer	<input type="checkbox"/>
3	ClusterTest	<input type="checkbox"/>
4	AVAST	<input type="checkbox"/>

16. Click **Next** after the server environment details are specified.

The following screen is displayed.

Figure 1-54 Application Deployment Status for Full Deployment

17. Click **Start Deployment** to start the process of application deployment.
The following screen displays the status of Applications being deployed.

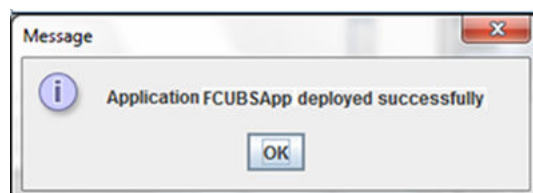
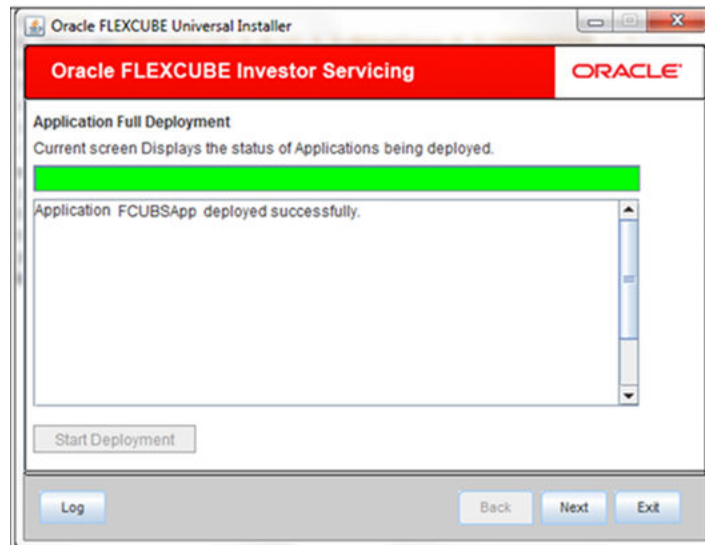
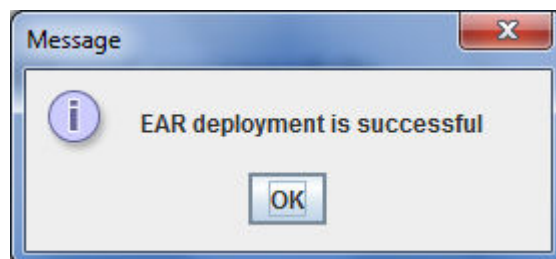
Figure 1-55 Application FCUBSApp deployed successfully

Figure 1-56 Start Application Full Deployment

18. You can view the information message on successful deployment and click **Ok** in the **Message** window.

The following **Message** window is displayed.

Figure 1-57 EAR Deployment Message

19. Click **Undeploy** button for undeploying the partially deployed EAR from the server.
If the deployment is not successful, the **Undeploy** button will be enabled in the **Application Deployment** status screen.

Figure 1-58 Undeploy