

# Oracle® FLEXCUBE Investor Servicing Standalone Scheduler EAR Building



Release 14.8.0.0.0  
G32108-02  
April 2025

ORACLE®

Copyright © 2007, 2025, Oracle and/or its affiliates.

This software and related documentation are provided under a license agreement containing restrictions on use and disclosure and are protected by intellectual property laws. Except as expressly permitted in your license agreement or allowed by law, you may not use, copy, reproduce, translate, broadcast, modify, license, transmit, distribute, exhibit, perform, publish, or display any part, in any form, or by any means. Reverse engineering, disassembly, or decompilation of this software, unless required by law for interoperability, is prohibited.

The information contained herein is subject to change without notice and is not warranted to be error-free. If you find any errors, please report them to us in writing.

If this is software, software documentation, data (as defined in the Federal Acquisition Regulation), or related documentation that is delivered to the U.S. Government or anyone licensing it on behalf of the U.S. Government, then the following notice is applicable:

U.S. GOVERNMENT END USERS: Oracle programs (including any operating system, integrated software, any programs embedded, installed, or activated on delivered hardware, and modifications of such programs) and Oracle computer documentation or other Oracle data delivered to or accessed by U.S. Government end users are "commercial computer software," "commercial computer software documentation," or "limited rights data" pursuant to the applicable Federal Acquisition Regulation and agency-specific supplemental regulations. As such, the use, reproduction, duplication, release, display, disclosure, modification, preparation of derivative works, and/or adaptation of i) Oracle programs (including any operating system, integrated software, any programs embedded, installed, or activated on delivered hardware, and modifications of such programs), ii) Oracle computer documentation and/or iii) other Oracle data, is subject to the rights and limitations specified in the license contained in the applicable contract. The terms governing the U.S. Government's use of Oracle cloud services are defined by the applicable contract for such services. No other rights are granted to the U.S. Government.

This software or hardware is developed for general use in a variety of information management applications. It is not developed or intended for use in any inherently dangerous applications, including applications that may create a risk of personal injury. If you use this software or hardware in dangerous applications, then you shall be responsible to take all appropriate fail-safe, backup, redundancy, and other measures to ensure its safe use. Oracle Corporation and its affiliates disclaim any liability for any damages caused by use of this software or hardware in dangerous applications.

Oracle®, Java, MySQL, and NetSuite are registered trademarks of Oracle and/or its affiliates. Other names may be trademarks of their respective owners.

Intel and Intel Inside are trademarks or registered trademarks of Intel Corporation. All SPARC trademarks are used under license and are trademarks or registered trademarks of SPARC International, Inc. AMD, Epyc, and the AMD logo are trademarks or registered trademarks of Advanced Micro Devices. UNIX is a registered trademark of The Open Group.

This software or hardware and documentation may provide access to or information about content, products, and services from third parties. Oracle Corporation and its affiliates are not responsible for and expressly disclaim all warranties of any kind with respect to third-party content, products, and services unless otherwise set forth in an applicable agreement between you and Oracle. Oracle Corporation and its affiliates will not be responsible for any loss, costs, or damages incurred due to your access to or use of third-party content, products, or services, except as set forth in an applicable agreement between you and Oracle.

# Contents

## Preface

---

Purpose	i
Audience	i
Documentation Accessibility	i
Critical Patches	ii
Diversity and Inclusion	ii
Conventions	ii
Screenshot Disclaimer	ii
Acronyms and Abbreviations	ii

## 1 Standalone Scheduler EAR Building

---

1.1 Building Application for Setup	1
------------------------------------	---

# Preface

**Oracle FLEXCUBE Investor Servicing** is a comprehensive mutual funds automation software from Oracle® Financial Servicing Software Ltd.©.

You can use the system to achieve optimum automation of all your mutual fund investor servicing processes, as it provides guidelines for specific tasks, descriptions of various features and processes, and general information.

This topic contains the following sub-topics:

- [Purpose](#)
- [Audience](#)
- [Documentation Accessibility](#)
- [Critical Patches](#)
- [Diversity and Inclusion](#)
- [Conventions](#)
- [Screenshot Disclaimer](#)
- [Acronyms and Abbreviations](#)

## Purpose

This manual is designed to help acquaint you with the installation of **Oracle FLEXCUBE Investor Servicing** application.

## Audience

This manual is intended for the following User/User Roles:

**Table 1 Users and Roles**

Users	Roles
Implementation team	Implementation of Oracle FLEXCUBE Investor Servicing
Presales team	Install Oracle FLEXCUBE Investor Servicing for demo purpose
Bank personnel	Who installs Oracle FLEXCUBE Investor Servicing

## Documentation Accessibility

For information about Oracle's commitment to accessibility, visit the Oracle Accessibility Program website at <http://www.oracle.com/pls/topic/lookup?ctx=acc&id=docacc>.

## Access to Oracle Support

Oracle customer access to and use of Oracle support services will be pursuant to the terms and conditions specified in their Oracle order for the applicable services.

## Critical Patches

Oracle advises customers to get all their security vulnerability information from the Oracle Critical Patch Update Advisory, which is available at [Critical Patches, Security Alerts and Bulletins](#). All critical patches should be applied in a timely manner to ensure effective security, as strongly recommended by [Oracle Software Security Assurance](#).

## Diversity and Inclusion

Oracle is fully committed to diversity and inclusion. Oracle respects and values having a diverse workforce that increases thought leadership and innovation. As part of our initiative to build a more inclusive culture that positively impacts our employees, customers, and partners, we are working to remove insensitive terms from our products and documentation. We are also mindful of the necessity to maintain compatibility with our customers' existing technologies and the need to ensure continuity of service as Oracle's offerings and industry standards evolve. Because of these technical constraints, our effort to remove insensitive terms is ongoing and will take time and external cooperation.

## Conventions

The following text conventions are used in this document:

Convention	Meaning
<b>boldface</b>	Boldface type indicates graphical user interface elements associated with an action, or terms defined in text or the glossary.
<i>italic</i>	Italic type indicates book titles, emphasis, or placeholder variables for which you supply particular values.
monospace	Monospace type indicates commands within a paragraph, URLs, code in examples, text that appears on the screen, or text that you enter.

## Screenshot Disclaimer

Personal information used in the interface or documents is dummy and does not exist in the real world. It is only for reference purposes.

## Acronyms and Abbreviations

The list of the acronyms and abbreviations used are as follows:

**Table 2 Acronyms and Abbreviations**

Abbreviation	Description
<b>FCIS</b>	Oracle FLEXCUBE Investor Servicing
<b>OEM</b>	Oracle Enterprise Manager

**Table 2 (Cont.) Acronyms and Abbreviations**

Abbreviation	Description
<b>EMS</b>	Electronic Messaging Service
<b>EJB</b>	Enterprise Java Bean
<b>MDB</b>	Message Driven Beans

# 1

## Standalone Scheduler EAR Building

This topic explains the process of building EAR files using Standalone Scheduler.

The process of building EAR files includes the following steps:

- Load property file
- Copy sources
- Compile sources
- Build sources

This topic contains the following sub-topic:

- [Building Application for Setup](#)  
This topic explains the steps to build the application for setup using the installer.

### 1.1 Building Application for Setup

This topic explains the steps to build the application for setup using the installer.

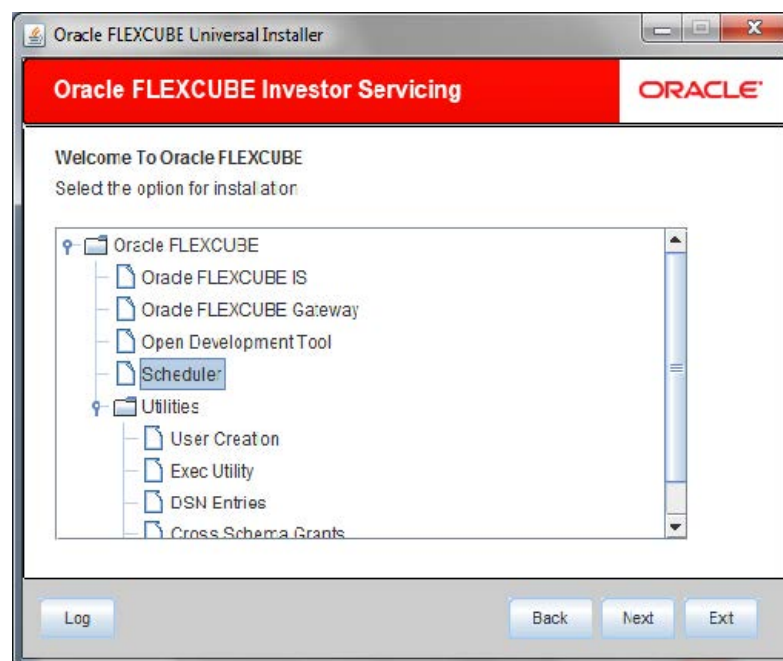
1. Double-click `FCUBSInstaller.bat` batch file to launch **Oracle FLEXCUBE Universal Installer**.

The **Oracle FLEXCUBE Universal Installer** is displayed.

2. Click **Next** to select the option for installation.

The following screen is displayed.

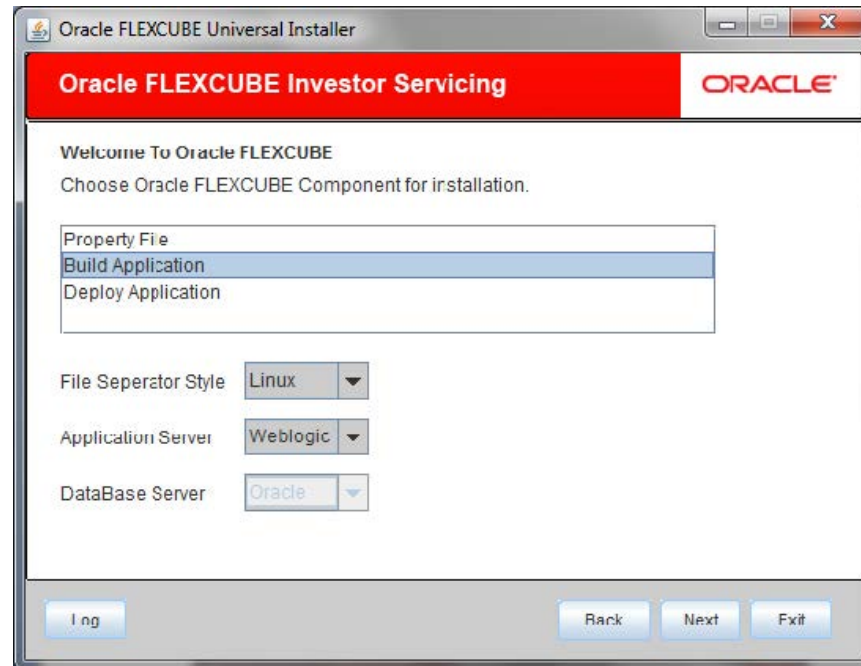
**Figure 1-1 Options for Installation**



3. Select **Scheduler** and click **Next** to choose the Oracle FLEXCUBE component for installation.

The following screen is displayed.

**Figure 1-2 Oracle FLEXCUBE Component for Installation**



4. Choose **Build Application** as Oracle FLEXCUBE component for installation.
5. Specify the following details:
  - a. **Operating System:** Specify the operating system in which you are building the application from the adjoining drop-down list.
  - b. **Application Server:** Specify the application server on which you are building the application from the adjoining drop-down list.
6. Click **Next**.
7. Select the appropriate installation option. Specify the schema details for validation in case of rolled up patch installation.

The following screen is displayed.



**Figure 1-3 Installation Type\_FC Home**

Oracle FLEXCUBE Universal Installer

Oracle FLEXCUBE Investor Servicing

Installation Type ☐

FC Home

☒ EAR Build ☐ EAR Build Rolled-up

Provide SMS schema details for patch install...

Name	Value
Username	test
Password	****
Service Name	test
IP Address	10.10.10.10
Port	1234
TNS Connect Descriptor	test

Test: Connection

Log Back Next Exit

8. Click **Next**.

For new schema details are not enabled.

9. Select the required deployable units from the **Valid Patch List**.

The valid list of deployable units are listed based on the **FC Home** selected.

**Figure 1-4 Valid Patch List**

Oracle FLEXCUBE Universal Installer

Oracle FLEXCUBE Investor Servicing

Valid Patch List

No	Version	Type	Select
1	14.0.0.0	CONSOLE	<input checked="" type="checkbox"/>

Log Back Next Exit

10. Choose the required set of Main and Patch releases.
11. Click **Next** to specify Destination and Application details.  
The following screen is displayed.

**Figure 1-5 Build Process\_Destination and Application Details**

Oracle FLEXCUBE Universal Installer

**Oracle FLEXCUBE Investor Servicing** ORACLE®

**Build Process**  
Specify the destination directory, application name and context.

Destination Directory: D:\DESTTEMPDIR

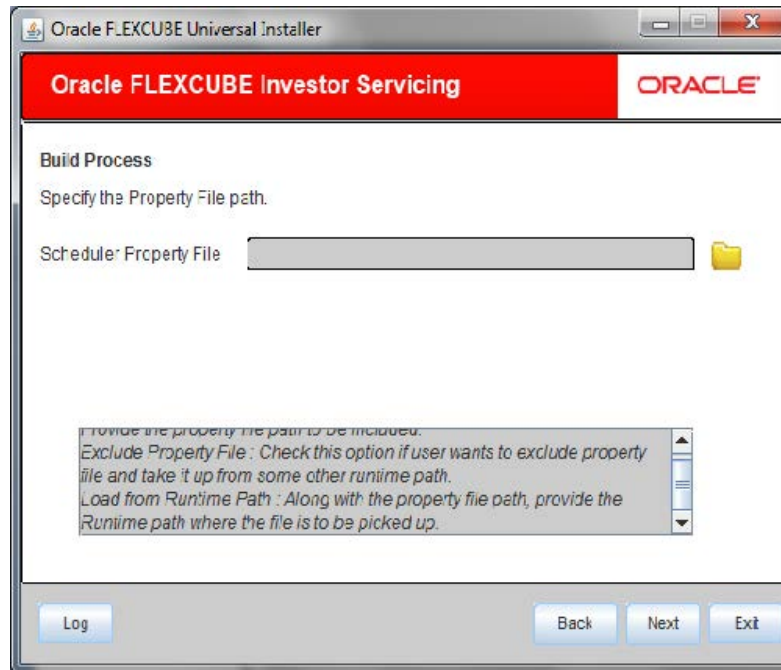
Application Name: SCHDLR\App

Application Context NeoWeb: SCHDLRNeoWeb

Application Context WebTab: FCJWebTab

Log Back Next Exit

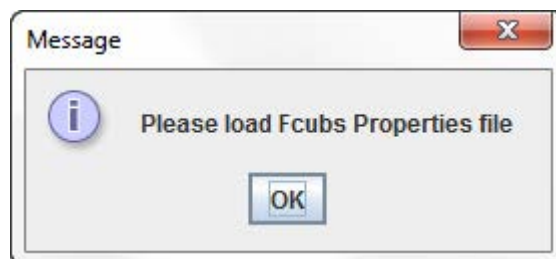
12. Specify the following details:
  - a. **Destination Directory:** Specify the destination directory. The installer will copy the source files from the source directory to the destination directory. Browse the source directory location using browsing directory icon.
  - b. **Application Name:** Specify name for the application to be deployed. The application name should not contain special characters and space. However, you may use '\_' (Underscore).
  - c. **Application Context:** The Installer displays the application context based on the application type selected. However, you may modify the default value. This information will be updated in **application.xml**. In case of a WebLogic server, this will be updated in **weblogic.xml**.
13. Click **Next** to specify property file path.  
The following screen is displayed.

**Figure 1-6 Property File Path**

14. Specify the location of the scheduler property file in the **Scheduler Property File**.

You can use the directory icon to browse and select the directory. The property file is required for EAR building. It is mandatory to load the property file.

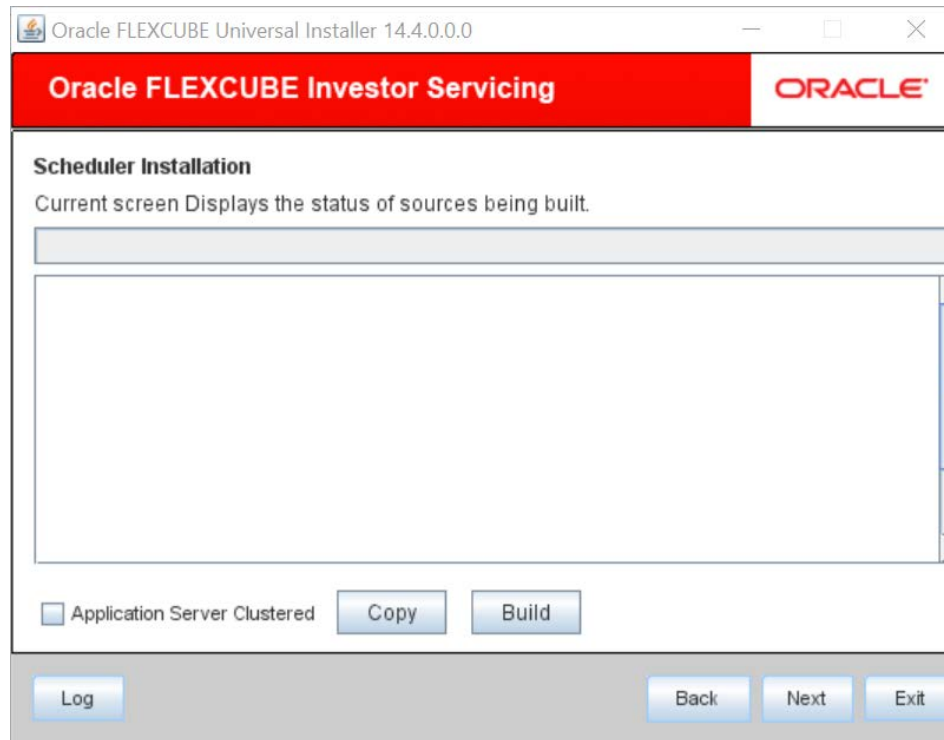
If you do not load a property file, the installer displays the following error message.

**Figure 1-7 Error Message**

15. You need to load the property file to continue.

16. Click **Next**.

The following screen is displayed.

**Figure 1-8 Status of Scheduler installation**

17. Copy the source using the **Copy** button and **Build** button to build.

The installer starts building the EAR/WAR files, after the files are copied. The compilation screen is not available in EXEC mode of installation.

- While copying the sources, the Installer copies all the plug-ins whether you have selected them or not. At this stage, the installer deletes the plug-ins that are not selected.
- If The EAR created is to be deployed in an Application server running in a clustered mode, the check box needs to check.

The Installer creates the EAR/WAR files in the destination directory, after the successful build process.