

Oracle® Financial Services Balance Sheet Planning Analytics User Guide



Release 8.1.2.0.0

F81448-01

May 2023

The Oracle logo, consisting of a solid red square with the word "ORACLE" in white, uppercase, sans-serif font centered within it.

ORACLE®

F81448-01

Copyright © 2011, 2023, Oracle and/or its affiliates.

This software and related documentation are provided under a license agreement containing restrictions on use and disclosure and are protected by intellectual property laws. Except as expressly permitted in your license agreement or allowed by law, you may not use, copy, reproduce, translate, broadcast, modify, license, transmit, distribute, exhibit, perform, publish, or display any part, in any form, or by any means. Reverse engineering, disassembly, or decompilation of this software, unless required by law for interoperability, is prohibited.

The information contained herein is subject to change without notice and is not warranted to be error-free. If you find any errors, please report them to us in writing.

If this is software, software documentation, data (as defined in the Federal Acquisition Regulation), or related documentation that is delivered to the U.S. Government or anyone licensing it on behalf of the U.S. Government, then the following notice is applicable:

U.S. GOVERNMENT END USERS: Oracle programs (including any operating system, integrated software, any programs embedded, installed, or activated on delivered hardware, and modifications of such programs) and Oracle computer documentation or other Oracle data delivered to or accessed by U.S. Government end users are "commercial computer software," "commercial computer software documentation," or "limited rights data" pursuant to the applicable Federal Acquisition Regulation and agency-specific supplemental regulations. As such, the use, reproduction, duplication, release, display, disclosure, modification, preparation of derivative works, and/or adaptation of i) Oracle programs (including any operating system, integrated software, any programs embedded, installed, or activated on delivered hardware, and modifications of such programs), ii) Oracle computer documentation and/or iii) other Oracle data, is subject to the rights and limitations specified in the license contained in the applicable contract. The terms governing the U.S. Government's use of Oracle cloud services are defined by the applicable contract for such services. No other rights are granted to the U.S. Government.

This software or hardware is developed for general use in a variety of information management applications. It is not developed or intended for use in any inherently dangerous applications, including applications that may create a risk of personal injury. If you use this software or hardware in dangerous applications, then you shall be responsible to take all appropriate fail-safe, backup, redundancy, and other measures to ensure its safe use. Oracle Corporation and its affiliates disclaim any liability for any damages caused by use of this software or hardware in dangerous applications.

Oracle®, Java, and MySQL are registered trademarks of Oracle and/or its affiliates. Other names may be trademarks of their respective owners.

Intel and Intel Inside are trademarks or registered trademarks of Intel Corporation. All SPARC trademarks are used under license and are trademarks or registered trademarks of SPARC International, Inc. AMD, Epyc, and the AMD logo are trademarks or registered trademarks of Advanced Micro Devices. UNIX is a registered trademark of The Open Group.

This software or hardware and documentation may provide access to or information about content, products, and services from third parties. Oracle Corporation and its affiliates are not responsible for and expressly disclaim all warranties of any kind with respect to third-party content, products, and services unless otherwise set forth in an applicable agreement between you and Oracle. Oracle Corporation and its affiliates will not be responsible for any loss, costs, or damages incurred due to your access to or use of third-party content, products, or services, except as set forth in an applicable agreement between you and Oracle.

Contents

1 Preface

1.1	Audience	1-1
1.2	Access to Oracle Support	1-1
1.3	Related Information Sources	1-1
1.4	Additional Documents to Read	1-2
1.5	Conventions	1-2
1.6	Abbreviations	1-2
1.7	What is New in this Release?	1-4

2 Data Visualization Project

2.1	Access BSP BI Report	2-1
2.1.1	BSP BI Report Link from LHS	2-1
2.1.2	Logging in to the BSP BI Page	2-1

3 BSP BI Report UI

3.1	Refresh BSP BI Report Data source	3-1
3.1.1	Refresh the BSP BI Forecast Set Results Dataset	3-1
3.1.2	Refresh the BSP BI Organization Unit Dataset	3-2
3.1.3	Refresh the BSP BI Product Hierarchy Dataset	3-3
3.1.4	Refresh the BSP BI Legal Entity Dataset	3-5
3.2	Disable Editor Panel Options	3-7
3.3	Mandatory Report Drivers	3-9
3.4	Optional Report Drivers	3-12
3.5	Use Report Hierarchical Levels	3-14

4 BSP BI Report Navigation and Content Details

4.1	General Remarks BSP BI Report Navigation and Content Details	4-1
4.2	BSP BI Report Formulae	4-2
4.3	BSP BI Report List	4-5
4.3.1	Balances	4-6

4.3.2	Runoff Details	4-6
4.3.3	Net Interest Margin	4-7
4.3.4	Ending Rates	4-8
4.3.5	Average Rates	4-9
4.3.6	Funding Center IS (Income Statement)	4-10
4.3.7	Forecast Set Details	4-11

5 BSP BI Report Custom Configuration

5.1	Defaulted Hierarchical levels	5-1
5.2	Amend Default Hierarchical levels	5-1

1

Preface

This section provides information about the Oracle Financial Services Balance Sheet Planning Application Pack's (OFS BSP Pack) Analytics User Guide.

Topics:

- [Audience](#)
- [Access to Oracle Support](#)
- [Related Information Sources](#)
- [Additional Documents to Read](#)
- [Conventions](#)
- [Abbreviations](#)

1.1 Audience

Oracle Financial Services Balance Sheet Planning Application Pack's (OFS BSP Pack) Analytics User Guide describes the features and functions of BSP's Analytics is intended for the use of Planning Administrators and Planning Users and also BSP BI Reporting Analysts and Administrators.

1.2 Access to Oracle Support

Oracle customers have access to electronic support through My Oracle Support. For more information, visit [My Oracle Support](#) or visit [Oracle Accessibility Learning and Support](#) if you are hearing impaired.

1.3 Related Information Sources

This section identifies additional documents related to the OFS BSP Application Pack.

You can access the following documents online from the [Oracle Help Center \(OHC\) Documentation Library](#) for OFS BSP Application Pack Release 8.1.2.0.0:

- OFS Balance Sheet Planning Release Notes, Release 8.1.2.0.0
- OFS Balance Sheet Planning Application Pack Installation and Configuration Guide, Release 8.1.2.0.0
- OFS Balance Sheet Planning System Administrator User Guide, Release 8.1.2.0.0
- OFS Balance Sheet Planning-Planning Administrator and Planning Analyst User Guide, Release 8.1.2.0.0
- OFS Balance Sheet Planning Cloning Reference Guide Release 8.1.x
- OFS Balance Sheet Planning Security Guide Release 8.1.x

1.4 Additional Documents to Read

Oracle Financial Services Balance Sheet Planning Application is built on the Oracle Financial Services Advanced Analytical Applications Infrastructure (OFS AAI).

See the following OFS AAI Documents ([OHC Documentation Library](#)) as no separate documents are required at the pack or application level for Oracle Financial Services Balance Sheet Planning Application Pack:

- OFS Analytical Applications Infrastructure (OFS AAAI) Application Pack Installation and Configuration Guide Release 8.1.2.0.0
- OFS Analytical Applications Infrastructure Administration Guide Release 8.1.x
- OFS Analytical Applications Infrastructure Cloning Reference Guide Release 8.1.x
- OFS Analytical Applications Infrastructure Security Guide Release 8.1.x
- OFS Analytical Applications Infrastructure User Guide Release 8.1.2.0.0

You can access the common document from the OHC Documentation Library:

- [OFS Analytical Applications 8.1.2.0.0 Technology Matrix](#)
- [OFS Data Model Utilities Guide](#)
- [OFS Cash Flow Engine Reference Guide](#)

1.5 Conventions

The following text conventions are used in this document:

Table 1-1 Conventions Used in this Guide

Convention	Meaning
boldface	Boldface type indicates graphical user interface elements associated with an action or terms defined in text or the glossary.
italic	Italic type indicates book titles, emphasis, or placeholder variables for which you supply particular values.
monospace	Monospace type indicates commands within a paragraph, URLs, code in examples, file names, text that appears on the screen, or text that you enter.
Hyperlink	Hyperlink type indicates the links to external websites, internal document links to sections.

1.6 Abbreviations

The following table lists the abbreviations used in this document:

Abbreviation	Meaning
BDP	Big Data Processing

Abbreviation	Meaning
DBA	Database Administrator
DDL	Data Definition Language
DEFQ	Data Entry Forms and Queries
DML	Data Manipulation Language
EAR	Enterprise Archive
EJB	Enterprise JavaBean
ERM	Enterprise Resource Management
FTP	File Transfer Protocol
HDFS	Hadoop Distributed File System
HTTPS	Hypertext Transfer Protocol Secure
J2C	J2EE Connector
J2EE	Java 2 Enterprise Edition
JCE	Java Cryptography Extension
JDBC	Java Database Connectivity
JDK	Java Development Kit
JNDI	Java Naming and Directory Interface
JRE	Java Runtime Environment
JVM	Java Virtual Machine
LDAP	Lightweight Directory Access Protocol
LHS	Left Hand Side
MFA	Multi-Factor Authentication
MOS	My Oracle Support
OFSA	Oracle Financial Services Analytical Applications
OFSAI	Oracle Financial Services Analytical Application Infrastructure
OFSAAI	Oracle Financial Services Advanced Analytical Applications Infrastructure Application Pack
OHC	Oracle Help Center
OLAP	On-Line Analytical Processing
OLH	Oracle Loader for Hadoop
ORAAH	Oracle R Advanced Analytics for Hadoop
OS	Operating System
RAM	Random Access Memory
RDBMS	Relational Database Management System
RHEL	Red Hat Enterprise Linux
SFTP	Secure File Transfer Protocol
SID	System Identifier
SSL	Secure Sockets Layer
TNS	Transparent Network Substrate
URL	Uniform Resource Locator
VM	Virtual Machine
WAR	Web Archive
XML	Extensible Markup Language

1.7 What is New in this Release?

The following new features are introduced as part of this release:

- 1. Node Level Assumptions:** A redesigned Cash Flow Edits is available to check the quality of input data and cleanse it. In addition to a fresh User Interface, rules have been categorized into multiple groups/sub-groups. Users can select one or more groups/sub-group to execute on the selected date. A fresh installation of BSP 8.1.2.0.0 will have only the new Cash Flow Edits.
- 2. BSP BI Reports:** BSP BI Reports is aimed to replace BSP In-app Java reports with BI Data Visualization capability. The existing 5 Reporting categories is migrated with Out of Box which was prevailing in the earlier version, in addition the new BSP BI Reports provides Hierarchy Level Reporting (that is Legal Entity, Planning Center & Product level) which will facilitate results to roll up at the Node Level for DV Reports which can be accessed across all groups). For more information, see the remaining chapters in the guide.
- 3. Non-Maturity Products Modeling:** Helps to create a model that can calculate Core/Volatile Balance for Non-Maturity Products portfolio; based on Historical End of Period Balances available from these products. You can define Non-Maturity Behavior Patterns based on model outputs like how much is core, how long core will be available based on the Decay Rate Profile generated by the model. These in-built PYTHON Models can help you manage, funds available from Non-Maturity Products more precisely to enhance your profitability. For more information, see the *Non-Maturity Products Data Creation Process* and *Non-Maturity Products Model Analysis* Chapters in the OFS Balance Sheet Planning System Administrator User Guide, Release 8.1.2.0.0.
- 4. Enhanced Cash Flow Edits:** A redesigned Cash Flow Edits is available to check the quality of input data and cleanse it. In addition to a fresh User Interface, rules have been categorized into multiple groups/sub-groups. Users can select one or more groups/sub-group to execute on the selected date. For a customer upgrading from prior release of BSP, both old and new Cash Flow Edits are available to maintain continuity. A fresh installation of BSP 8.1.2.0.0 will, however, have only the new Cash Flow Edits. For more information, see *Cash Flow Edits* Chapter in the OFS Balance Sheet Planning System Administrator User Guide, Release 8.1.2.0.0.

2

Data Visualization Project

Data Visualization provides a quick and effective way to communicate information in a universal manner using visual information. The practice can also help businesses identify which factors affect Customer Behavior, pinpoint areas that need to be improved or need more attention make data more memorable for stakeholders, understand when and where to place specific products, and predict sales volumes.

This technology and its vision have been embraced by the BSP BI Reports to support the above End-User journey.

2.1 Access BSP BI Report

This section covers the description to access the BSP BI Reports.

2.1.1 BSP BI Report Link from LHS

To access the BSP BI Reports, from the LHS Menu, select **BSP BI Reports** after you log in with your user credentials.

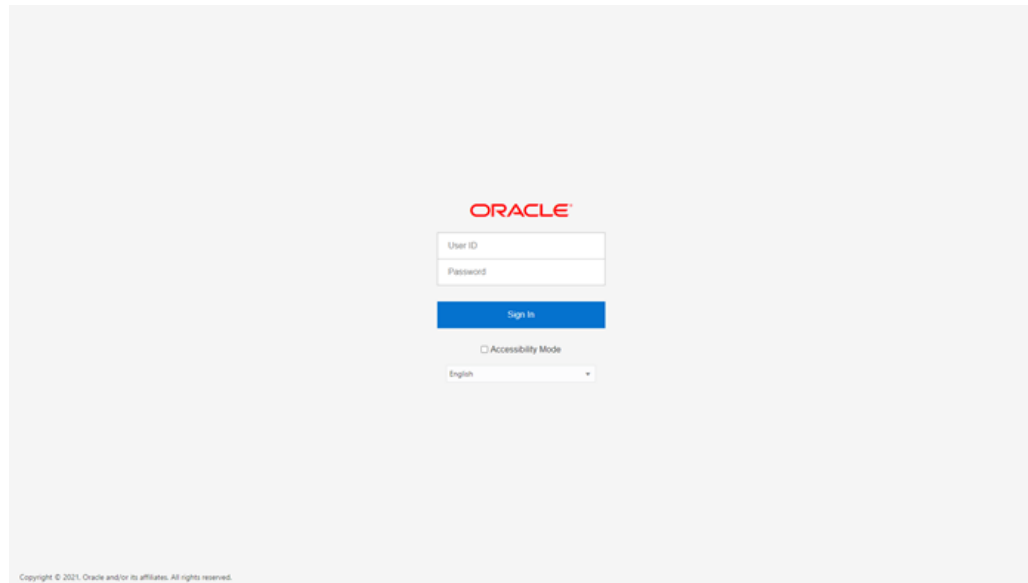
Figure 2-1 BSP BI Menu



2.1.2 Logging in to the BSP BI Page

After you open the LHS link from the previous step, you will be redirected to login into the BSP BI Report Page. Use your credentials to access the BI Reports.

Figure 2-2 BSP BI Login Screen



3

BSP BI Report UI

This section describes the operation capabilities with BSP BI Reporting using UI.

3.1 Refresh BSP BI Report Data source

Following are the steps to refresh BSP BI Report Datasets.

For example, after a new execution of a Forecast Set has happened or after a new Hierarchical Dimension has been configured.

The Datasets to be refreshed are the following:

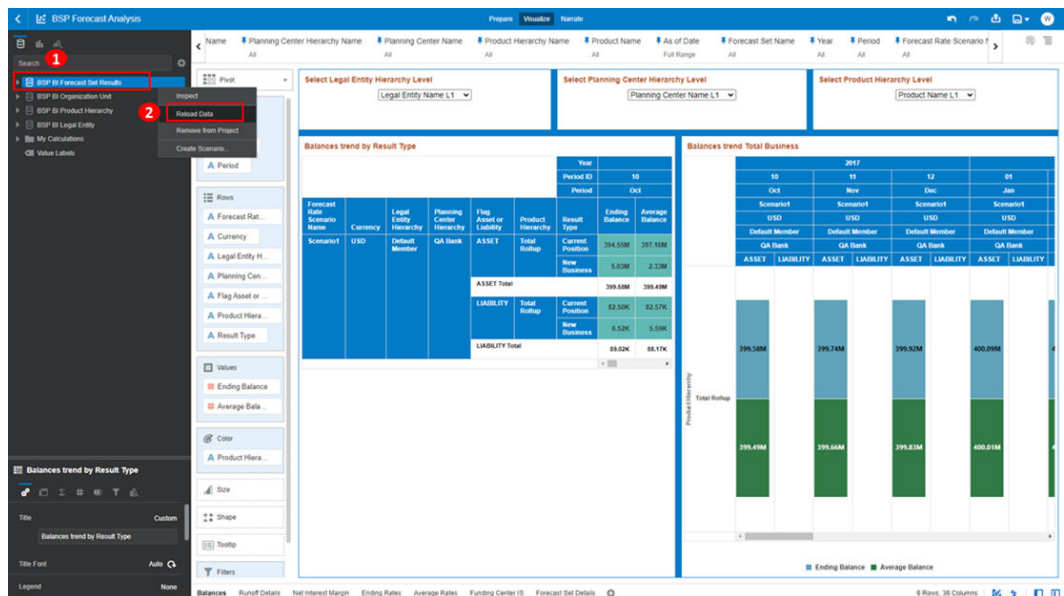
- BSP BI Forecast Set Results
- BSP BI Organization Unit
- BSP BI Product Hierarchy
- BSP BI Legal Entity

3.1.1 Refresh the BSP BI Forecast Set Results Dataset

To refresh the BSP BI Forecast Set Results Dataset, follow these steps:

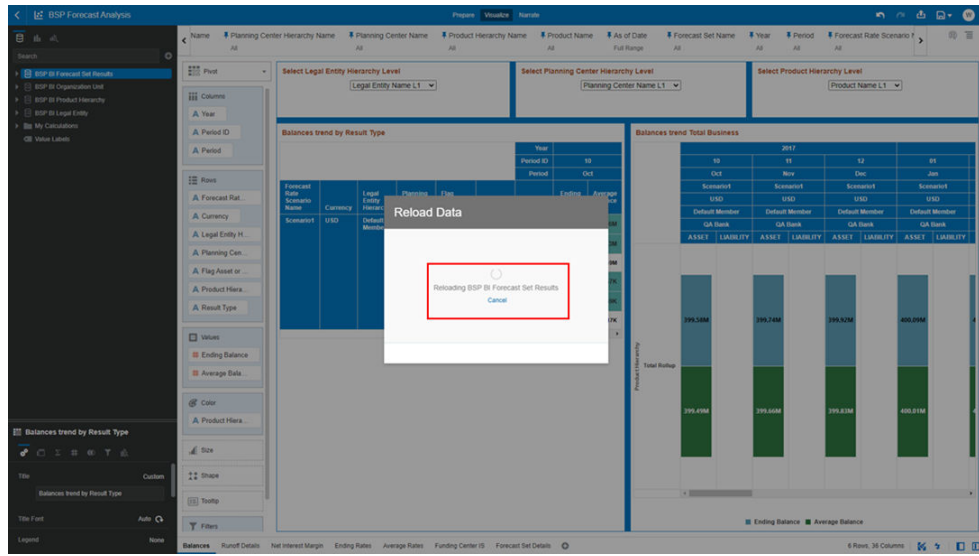
1. From the LHS Menu, select the desired **Dataset** as displayed in the following screenshot and then right-click on it to select the **Reload Data** option in the prompted action list.

Figure 3-1 BSP Forecast Analysis



2. Wait for the Dataset to be refreshed as displayed in the following screenshot.

Figure 3-2 Reload Data



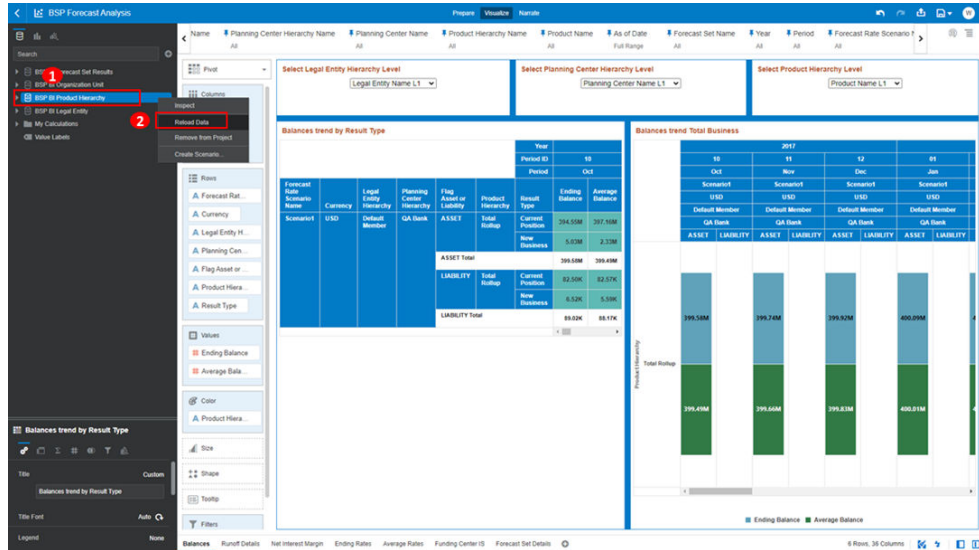
3. After the Dataset is refreshed, click **OK** to proceed.

3.1.2 Refresh the BSP BI Organization Unit Dataset

To refresh the BSP BI Organization Unit Dataset, follow these steps:

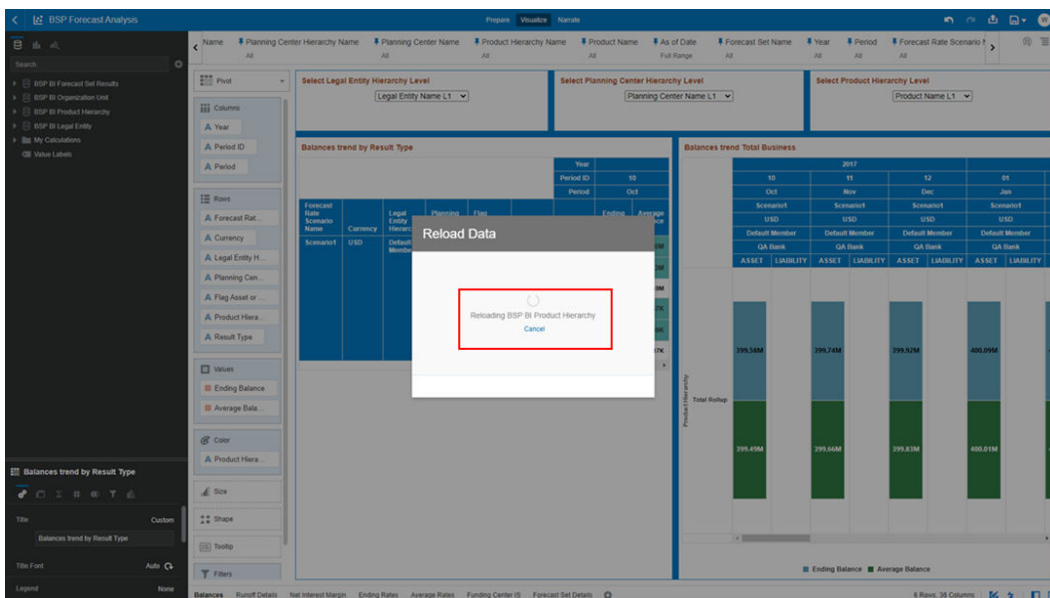
1. From the LHS Menu, select the desired **Dataset** as displayed in the following screenshot, and then right-click on it to select the **Reload Data** option in the prompted action list.

Figure 3-3 Reload Data Option



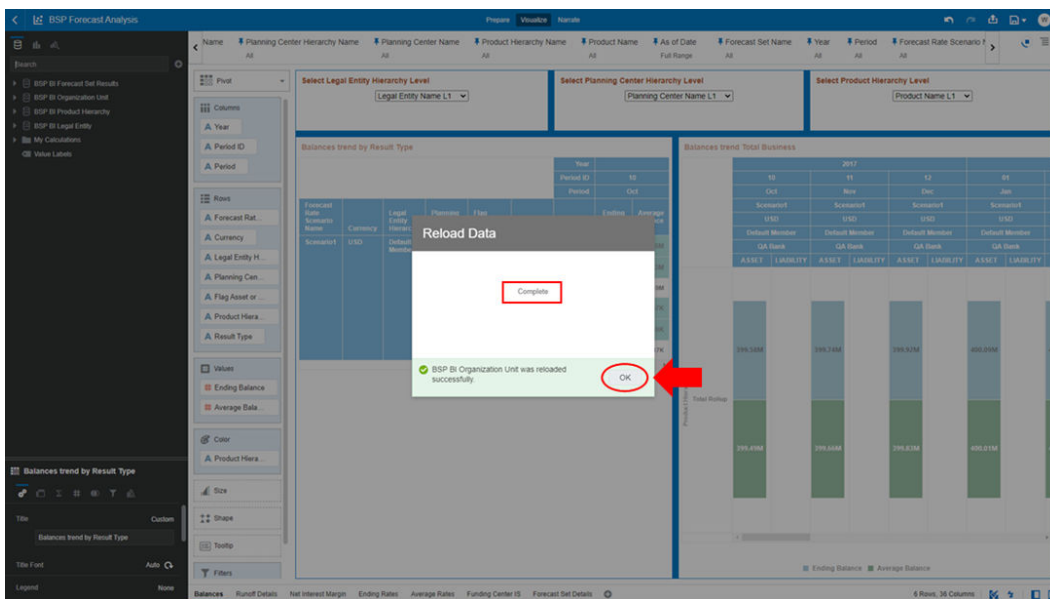
2. Wait for the Dataset to be refreshed as displayed in the following screenshot.

Figure 3-4 Data Reload



3. After the Dataset is refreshed click **OK** to proceed.

Figure 3-5 Reload Data Confirmation

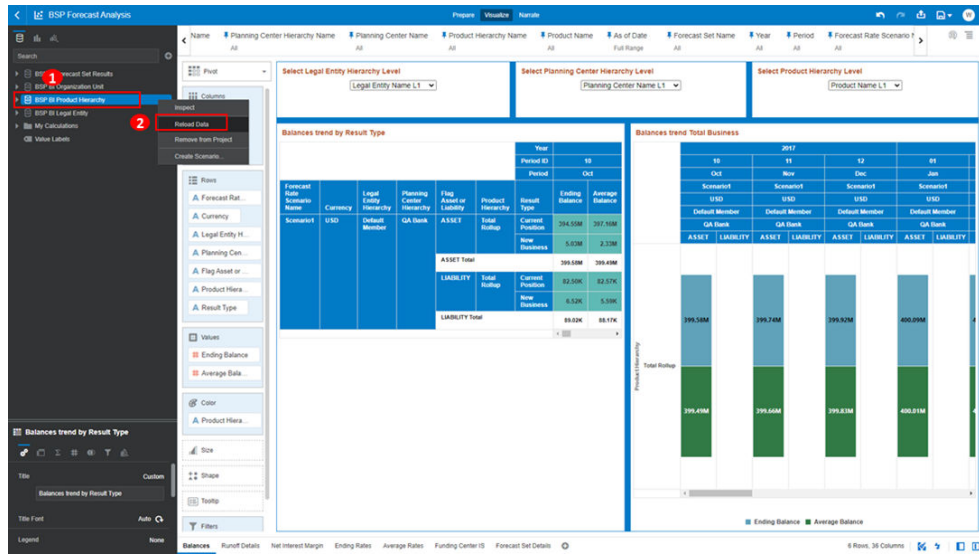


3.1.3 Refresh the BSP BI Product Hierarchy Dataset

To refresh the BSP BI Product Hierarchy Dataset, follow these steps:

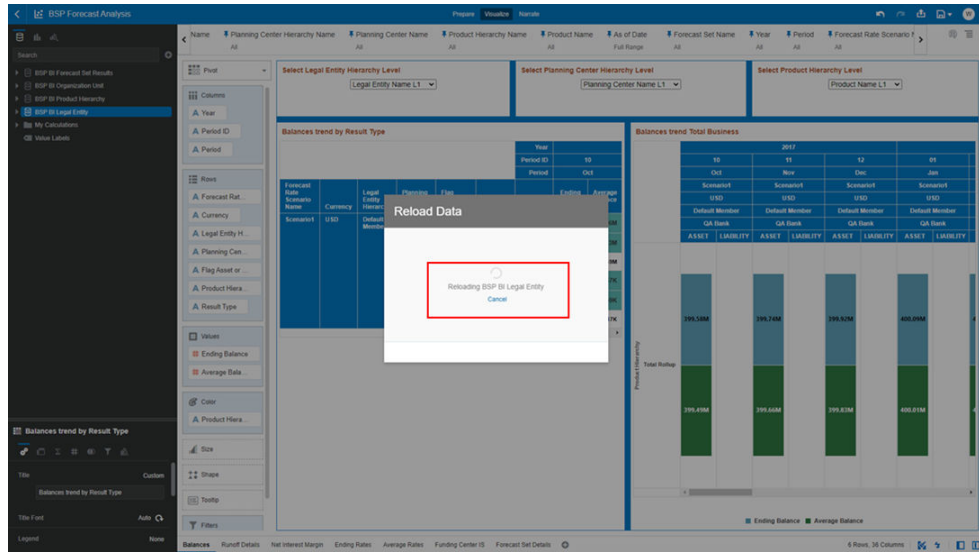
1. From the LHS menu, select the required **Dataset** as displayed in the following screenshot and then right-click on it to select the **Reload Data** option in the prompted action list.

Figure 3-6 Reload Data Option



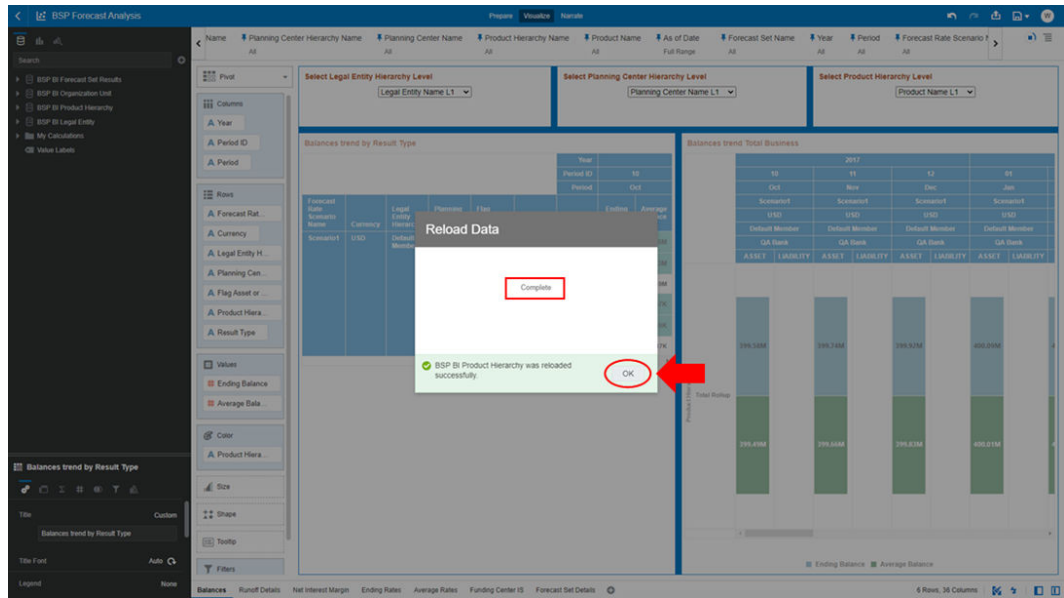
2. Wait for the Dataset to be refreshed as displayed in the following screenshot.

Figure 3-7 Data Reload



3. After the Dataset is refreshed click **OK** to proceed.

Figure 3-8 Reload Data Confirmation

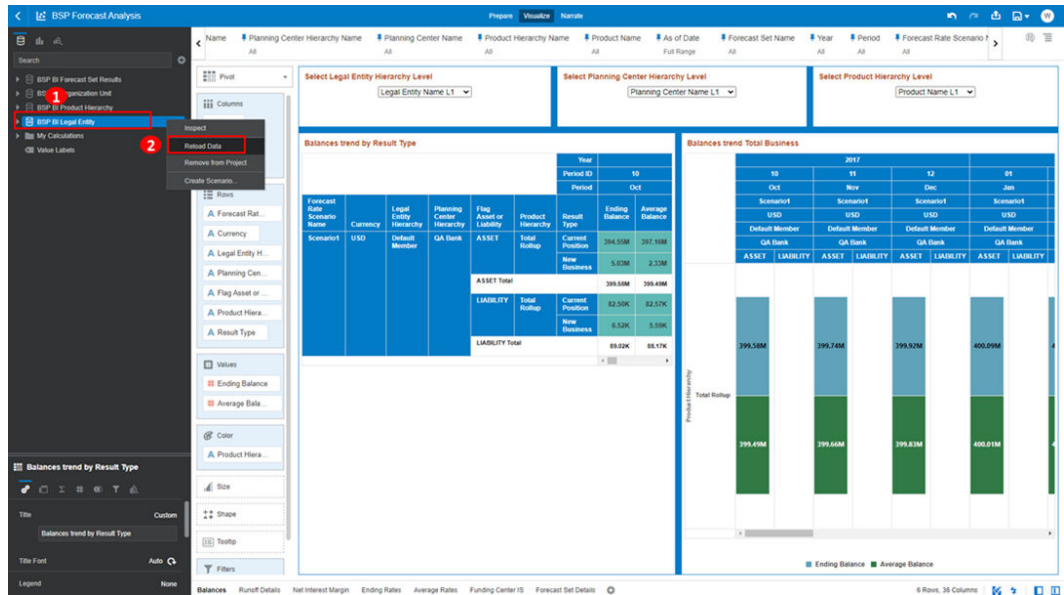


3.1.4 Refresh the BSP BI Legal Entity Dataset

To refresh the BSP BI Legal Entity Dataset, follow these steps:

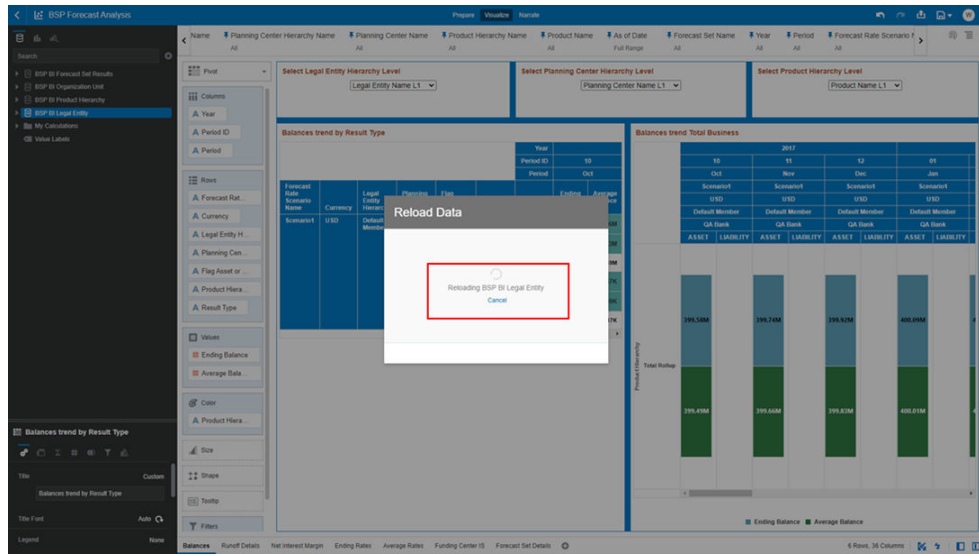
1. From the LHS Menu, select the required required **Dataset** as displayed in the following screenshot and then right-click on it to select the **Reload Data** option in the prompted action list.

Figure 3-9 Reload Data Option



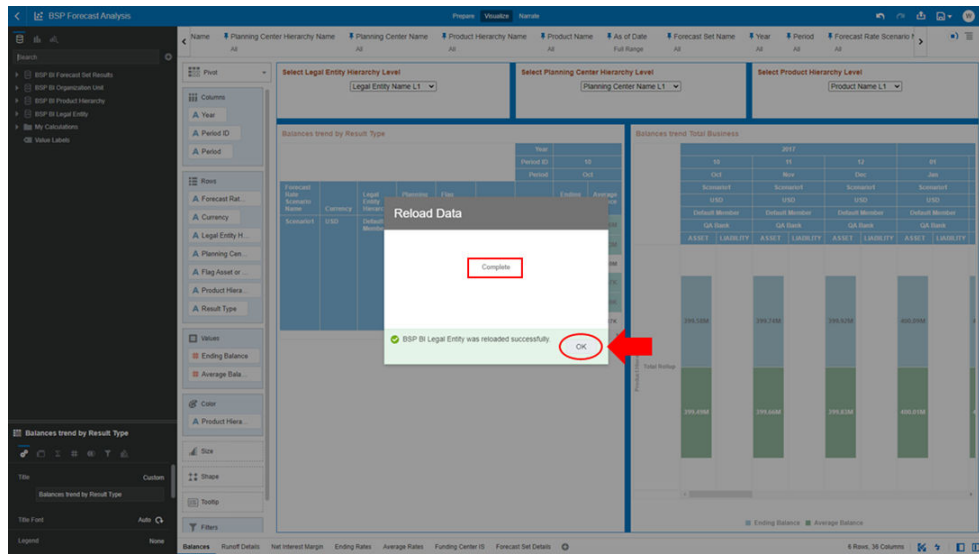
2. Wait for the Dataset to be refreshed.

Figure 3-10 Data Reload



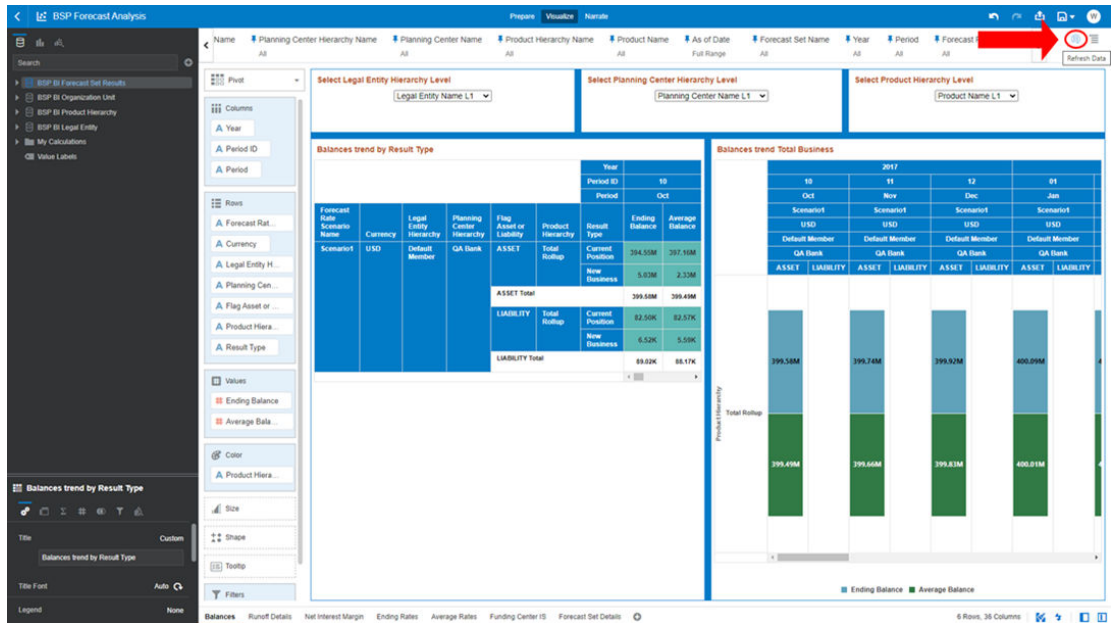
3. After the dataset is refreshed click **OK** to proceed.

Figure 3-11 Reload Data Confirmation



After the previous Datasets refresh, proceed with clicking on the “Refresh Data” Option from the top right hand side button as shown in the following screenshot.

Figure 3-12 Refresh Data



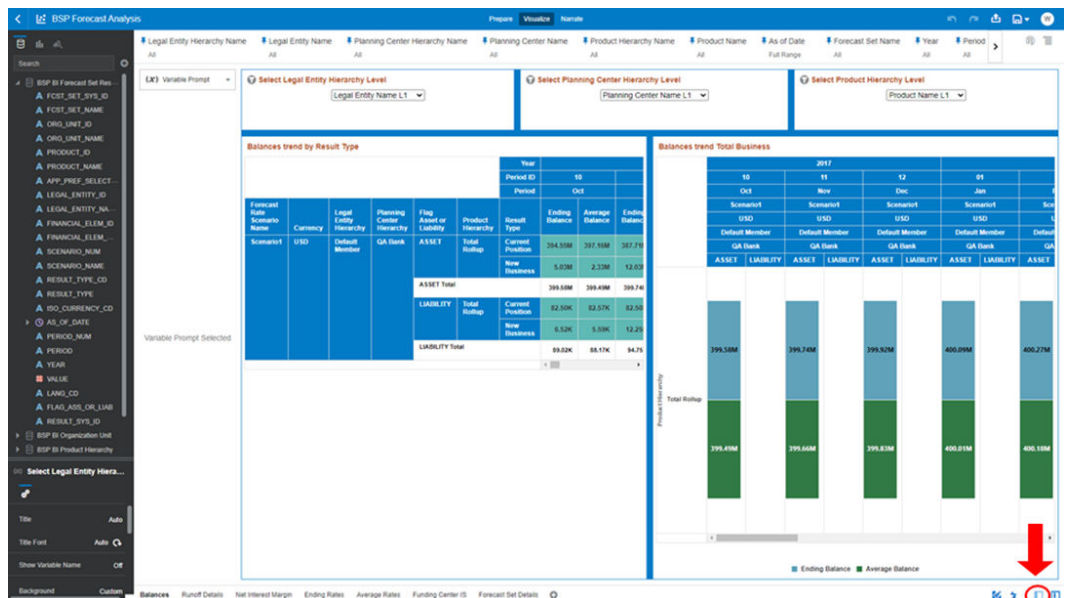
3.2 Disable Editor Panel Options

To use the BSP BI Report in Visualization Mode, you should disable the **Toggle Data Panel** and **Toggle Grammar Panel**.

Disable the **Toggle Data Panel** as follows:

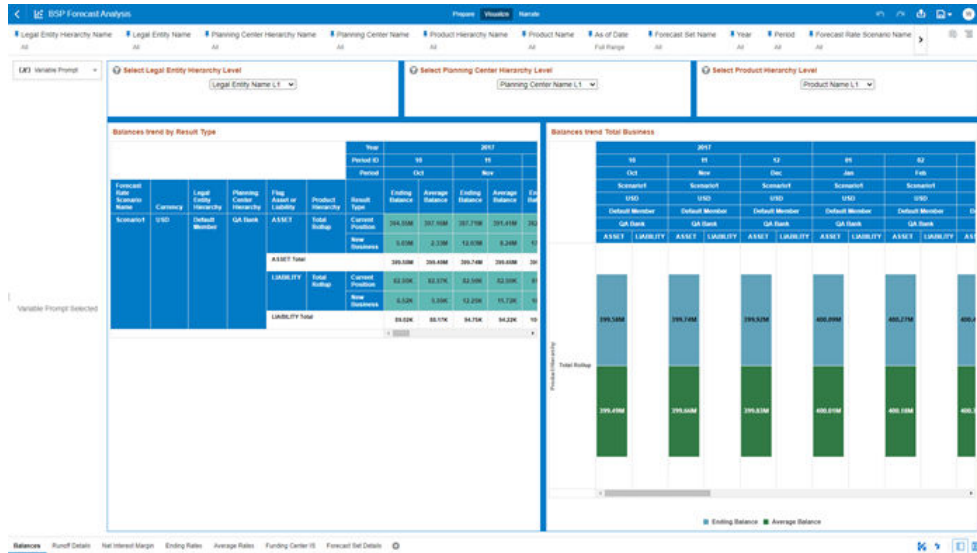
1. Click on the bottom right-hand side the button as shown.

Figure 3-13 BSP Forecast Analysis



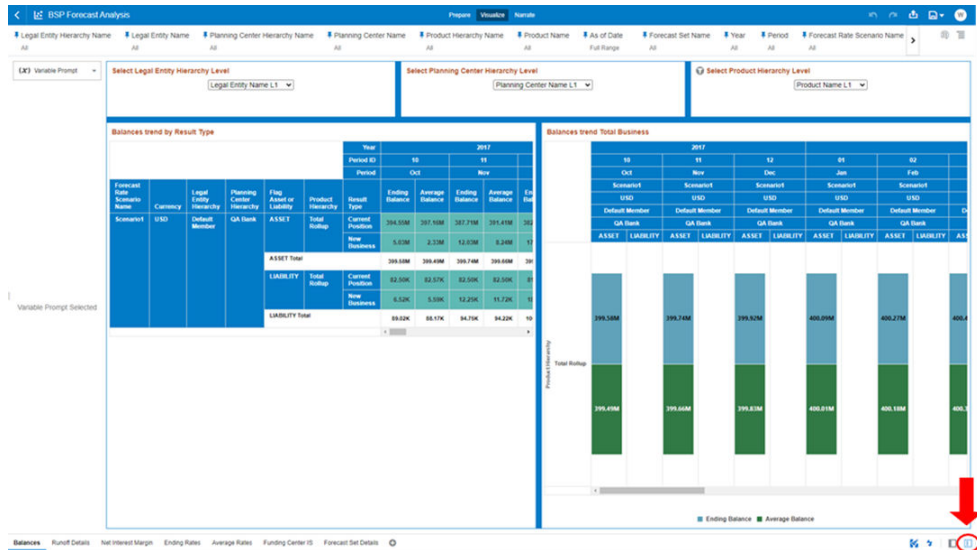
The result of the Step 1 action is displayed.

Figure 3-14 BSP Forecast Analysis Result



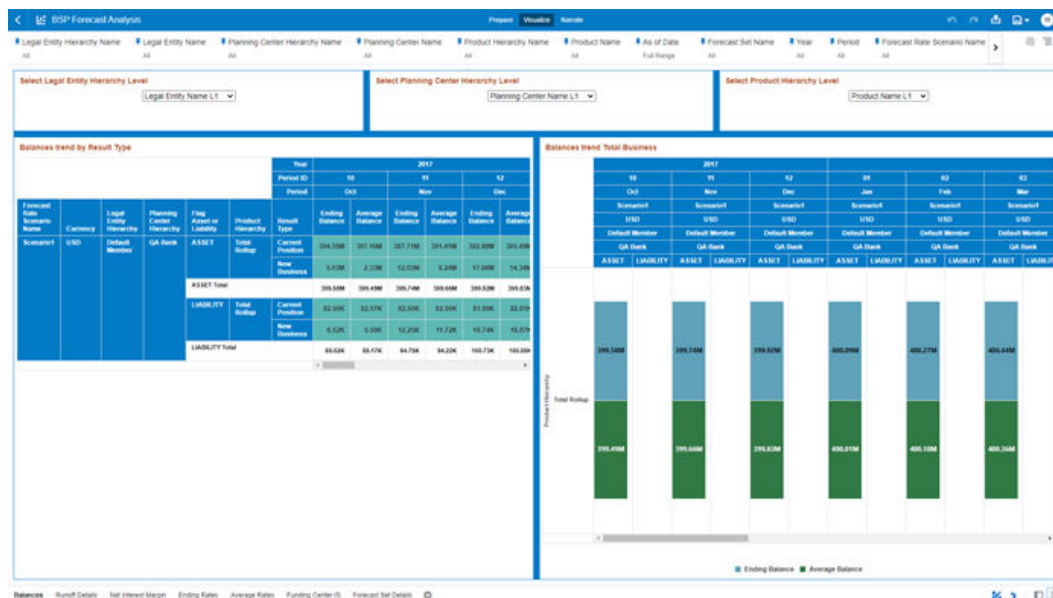
2. Disable the **Toggle Grammar Panel** as shown:

Figure 3-15 Disabling Toggle Grammar Panel



3. Click on the bottom right-hand side the **Toggle Grammar Panel** button as shown in the following screenshot. The result of the Step 1 action is displayed.

Figure 3-16 Disabling Toggle Grammar Panel



3.3 Mandatory Report Drivers

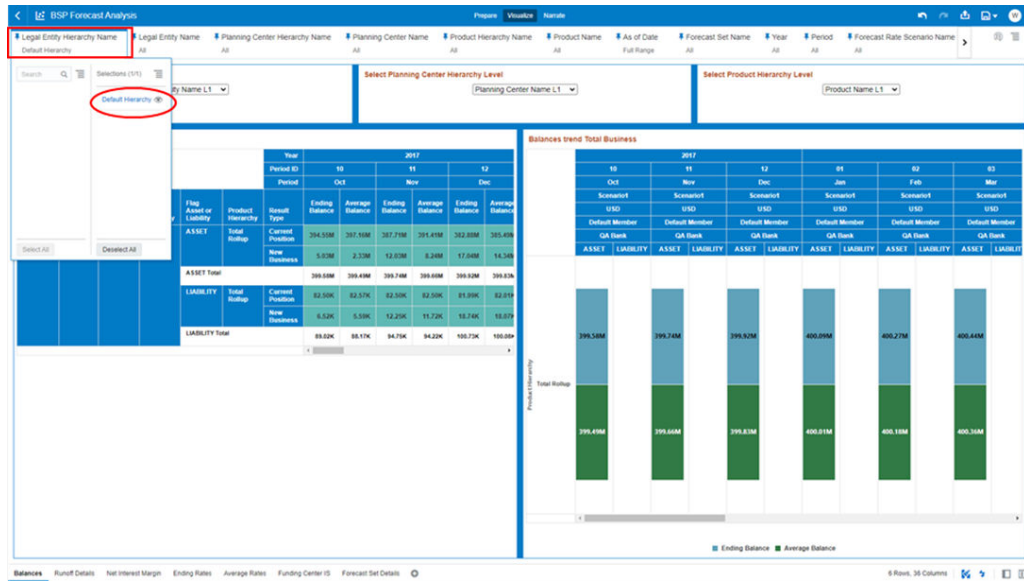
To get the desired BSP BI Report output, the Mandatory Reporting Drivers must be selected and applied as mentioned.

This is the list for the Mandatory Report Drivers that must be used as explained in the following process:

- Legal Entity Hierarchy Name
- Planning Center Hierarchy Name
- Product Hierarchy Name
- Forecast Set Name
- As of Date

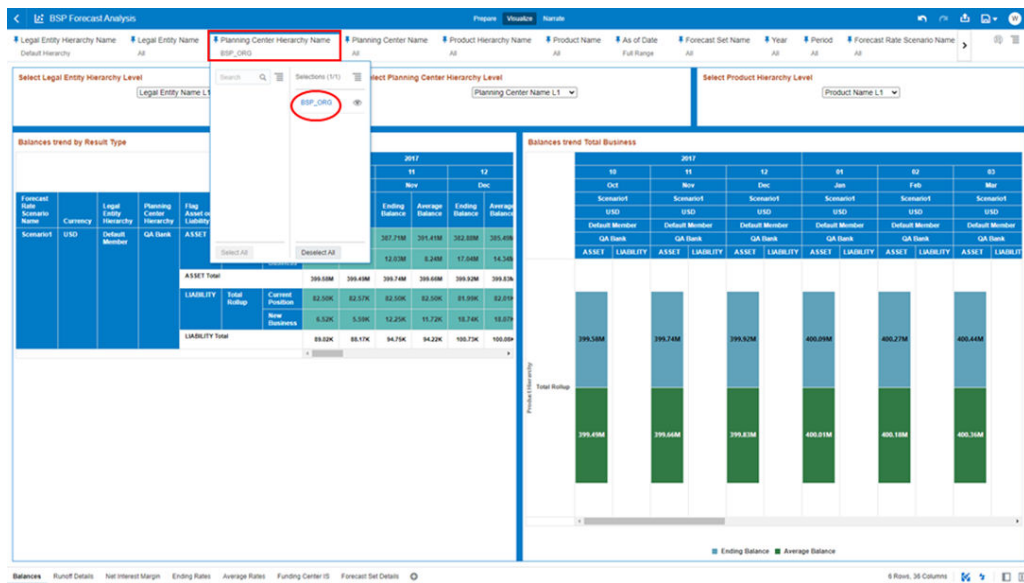
As the Application supports the creation of Multiple Hierarchies for the same Dimension of analysis and to avoid displaying results from multiple Dimension Hierarchies at the same time, a mandatory driver to select “Legal Entity Hierarchy Name” must be selected with only a single value, simultaneously (note the screenshot displays sample data value for the mentioned mandatory driver and that this would be replaced by configuration set-up of your installation).

Figure 3-17 Selecting Legal Entity Hierarchy Name



As the Application supports the creation of multiple Hierarchies for the same Dimension of analysis and to avoid displaying results from multiple Dimension Hierarchies at the same time, a mandatory driver to select “Planning Center Hierarchy Name” must be selected with only a single value, simultaneously (note the screenshot displays sample data value for the mentioned mandatory driver and that this would be replaced by configuration set-up of your installation).

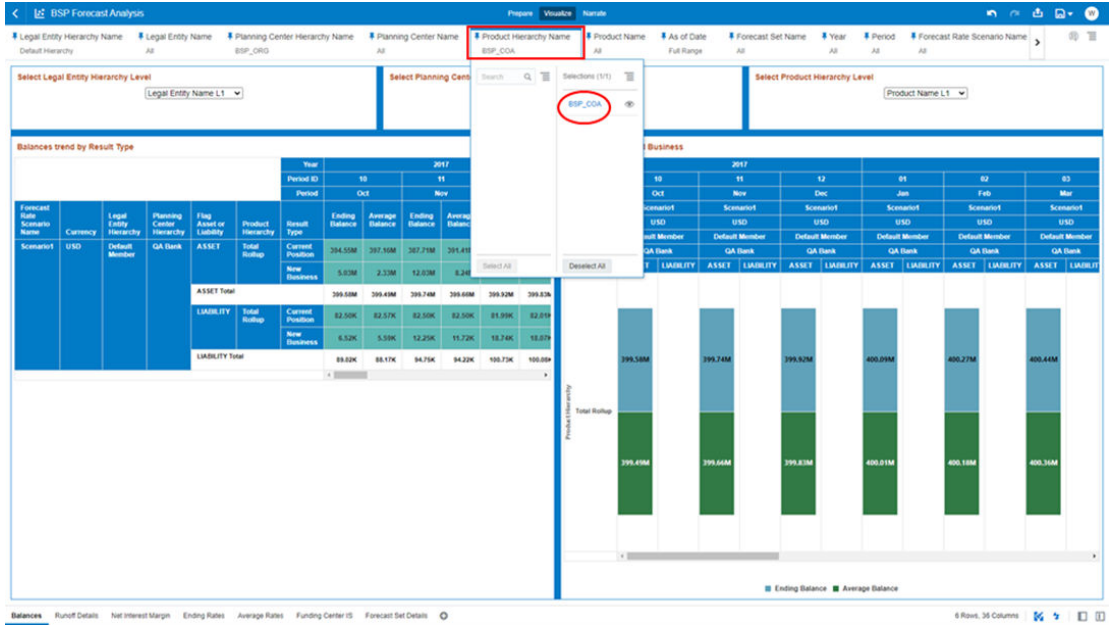
Figure 3-18 Planning Center Hierarchy Name



As the Application supports the creation of multiple Hierarchies for the same Dimension of analysis and to avoid displaying results from multiple Dimension Hierarchies at the same time, a mandatory driver to select “Product Hierarchy Name”

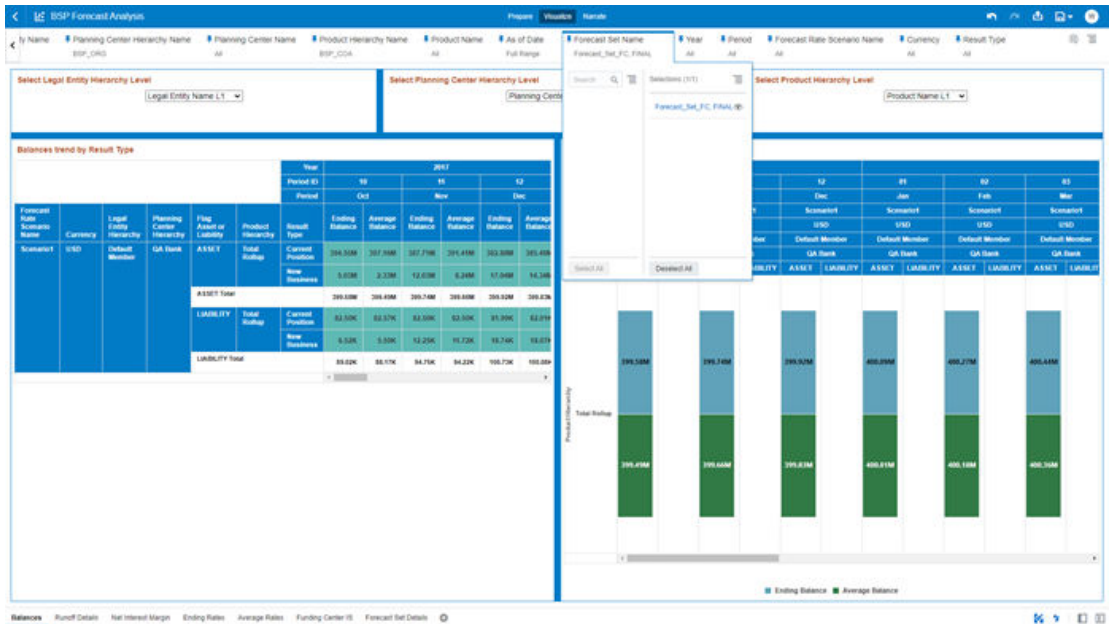
must be selected with only a single value, simultaneously (note the screenshot displays sample data value for the mentioned mandatory driver and that this would be replaced by configuration set-up of your installation).

Figure 3-19 Product Hierarchy Name



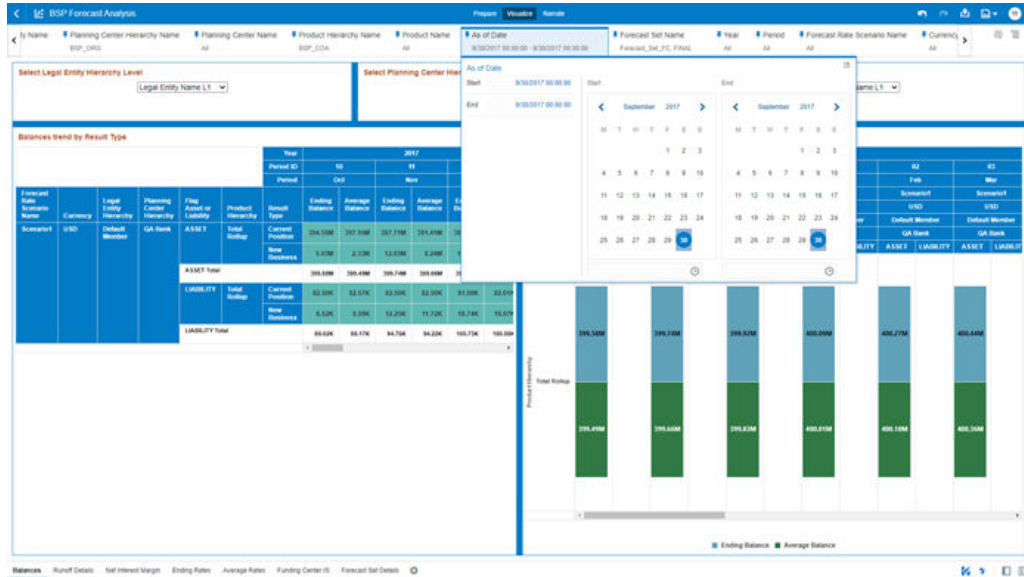
A mandatory driver to select “Forecast Set Name” must be selected with only a single value simultaneously as the end-user requires to analyze one Forecast Result at once (note the screenshot displays sample data value for the mentioned mandatory driver and that this would be replaced by configuration set-up of your installation).

Figure 3-20 Forecast Set Name



A mandatory driver to select “As of Date” must be selected with only a single value, simultaneously, as the end-user requires to analyze one Forecast Result Execution Period at once (note the screenshot displays sample data value for the mentioned mandatory driver and that this would be replaced by configuration set-up of your installation).

Figure 3-21 As of Date



3.4 Optional Report Drivers

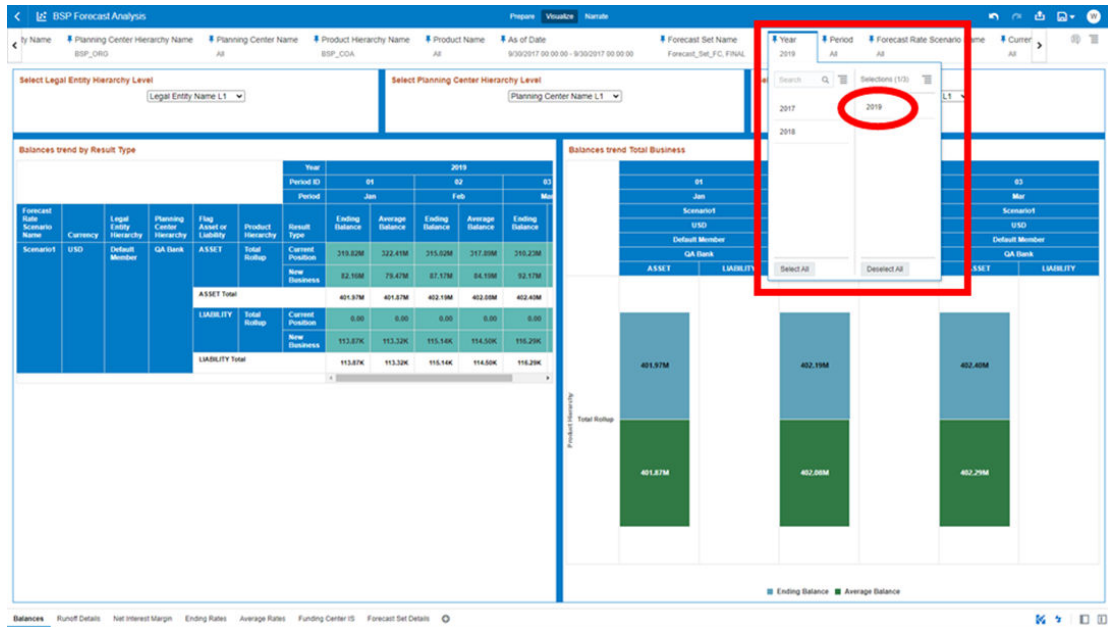
To further filter the desired BSP BI Report Output, the Optional Reporting Drivers can be discretionarily selected as mentioned.

The following is the list for the Optional Report Drivers that can be used as explained in the following process:

- Legal Entity Name
- Planning Center Name
- Product Name
- Year
- Period
- Forecast Rate Scenario Name
- Currency
- Result Type
- Financial Element ID (available only in “Forecast Set Details” report canvas)
- Financial Element (available only in “Forecast Set Details” report canvas)

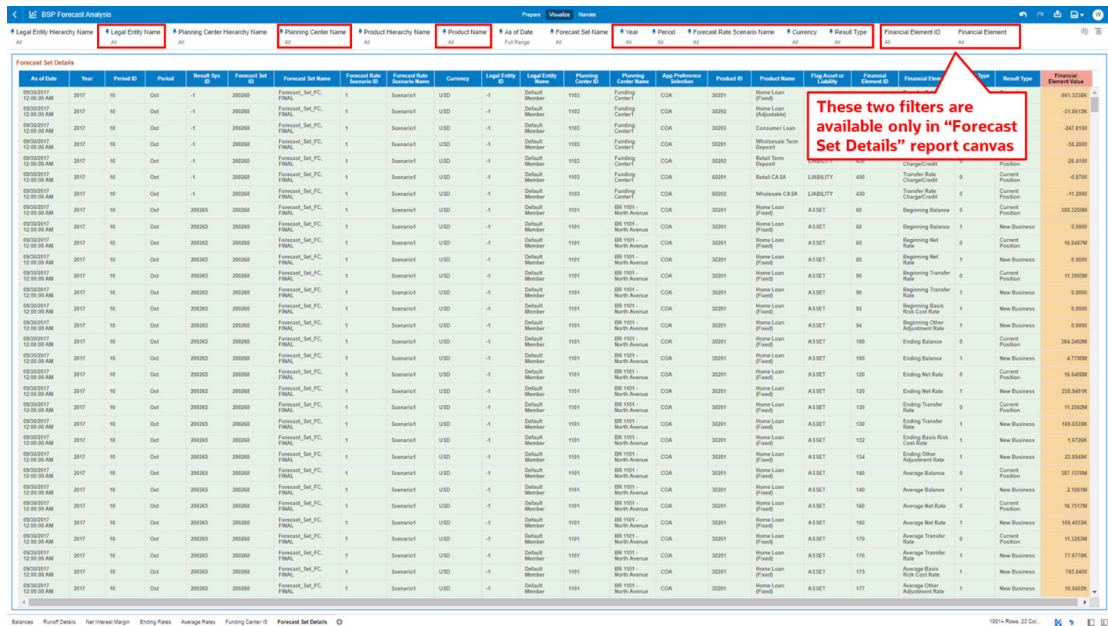
The following screenshot demonstrates how to leverage the Optional Report Drivers (that is, filter for “Year” with a selection of “2019”).

Figure 3-22 Optional Report Drivers



The following screenshot displays the entire list for the Optional Report Drivers (note that “Financial Element ID” and “Financial Element” are available only in the “Forecast Set Details” Report Canvas).

Figure 3-23 List of Optional Report Drivers



3.5 Use Report Hierarchical Levels

The BSP BI Reports enable the roll-up and drill-down capability for Forecast Output Results, leveraging all the available levels for the following three Hierarchies:

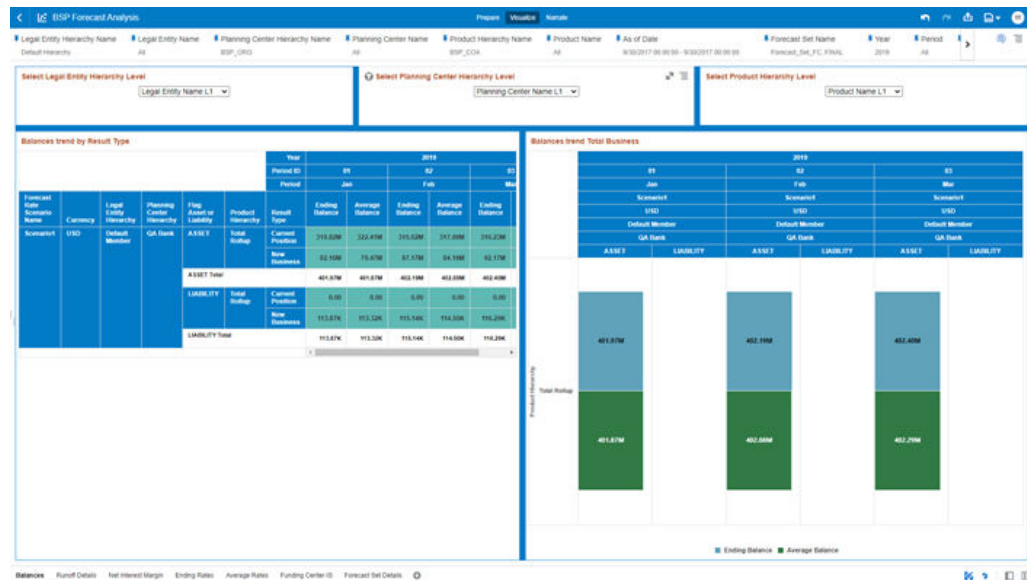
- Legal Entity Hierarchy
- Planning Center Hierarchy
- Product Hierarchy

The following screenshot displays the three available selections for the aforementioned hierarchies. These are available for all the Report Canvases except for the “Funding Center IS”, where only “Legal Entity Hierarchy” and “Product Hierarchy” are available. This is because Funding Center is always a hypothetical branch, which is created to do all adjustments, which are prevailing under the Planning Center. Therefore, there is no hierarchy available for this Driver, and for “Forecast Set Details”.

Available Hierarchies for the Report Canvases are as follows:

- Balances
- Runoff Details
- Net Interest Margin
- Ending Rates
- Average Rates

Figure 3-24 BSP Forecast Analysis Homepage



No hierarchies are available for the Forecast Set Details Report Canvas.

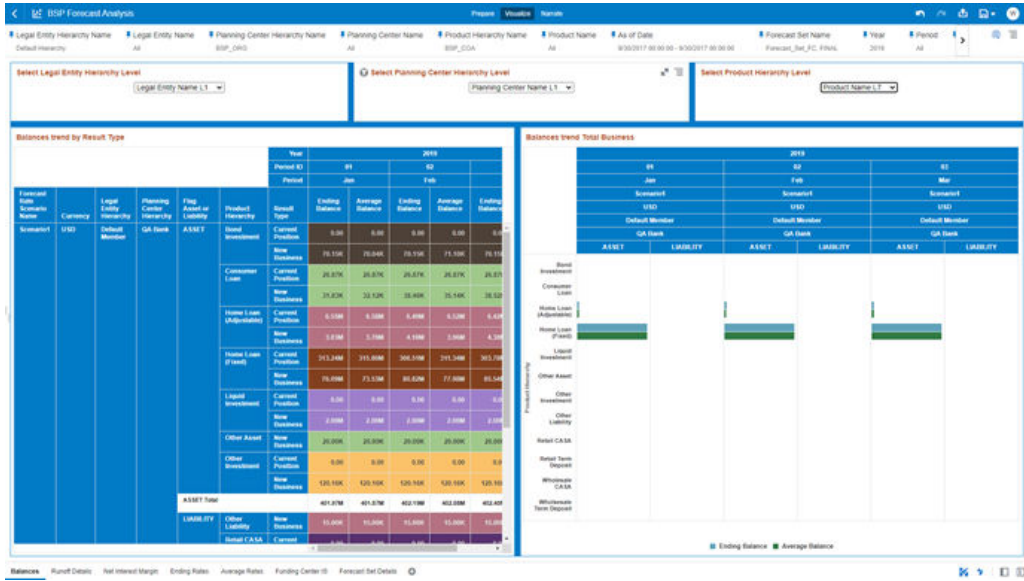
Figure 3-25 Forecast Set Details

The following screenshot describes how to select a Hierarchy Level for the “Product Hierarchy”.

Figure 3-26 Selecting Hierarchy Level for the Product Hierarchy

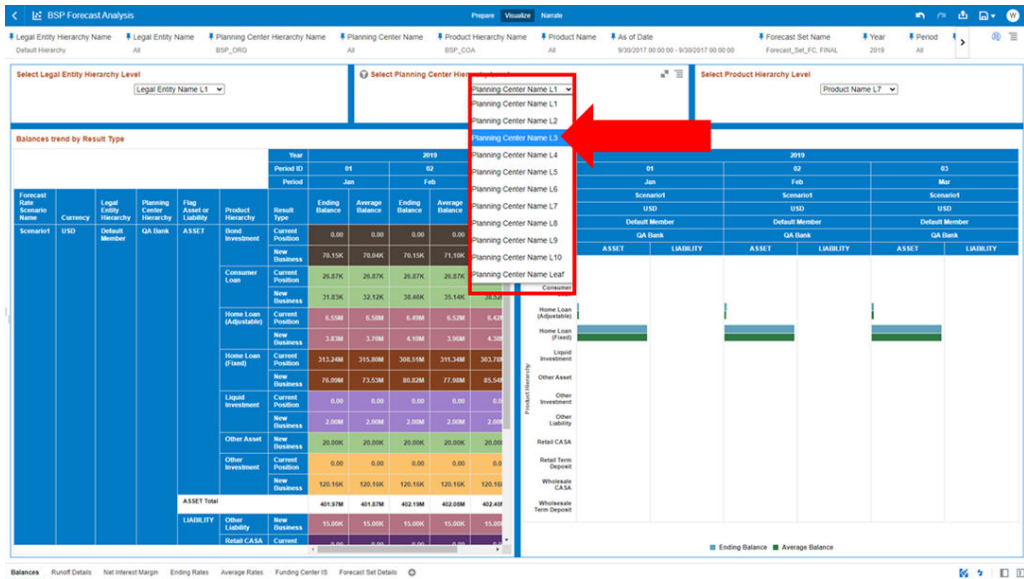
The following screenshot displays the updated Forecast Output results after the selection of the required Hierarchical Level for the “Product Hierarchy”.

Figure 3-27 Forecast Output Results



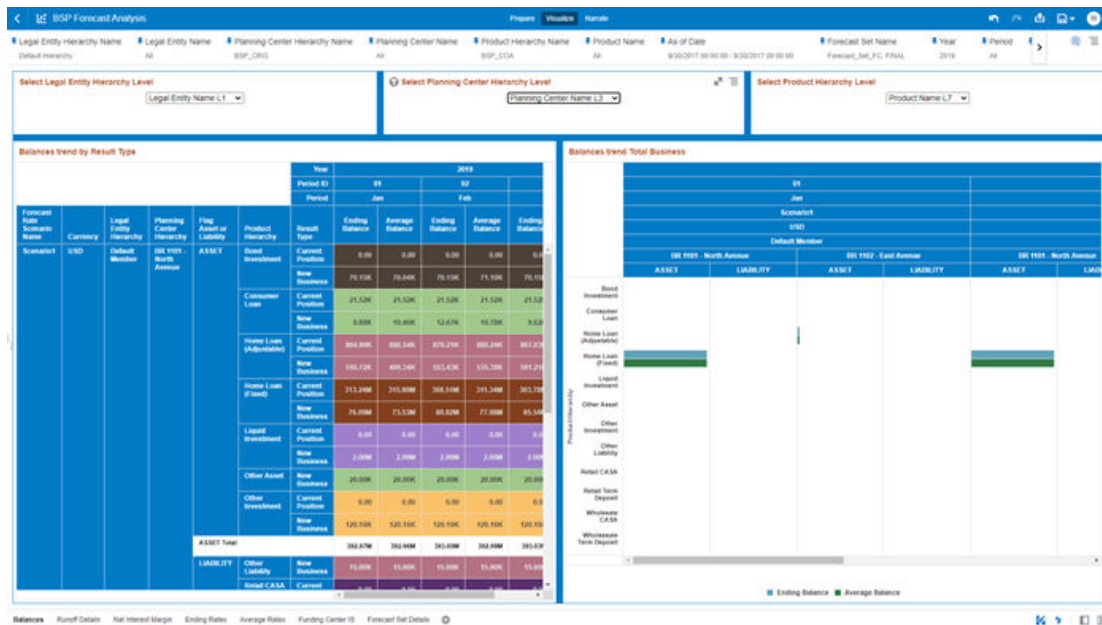
The following screenshot describes how to select a Hierarchy Level for the “Planning Center Hierarchy”.

Figure 3-28 Hierarchy Level for the Planning Center Hierarchy



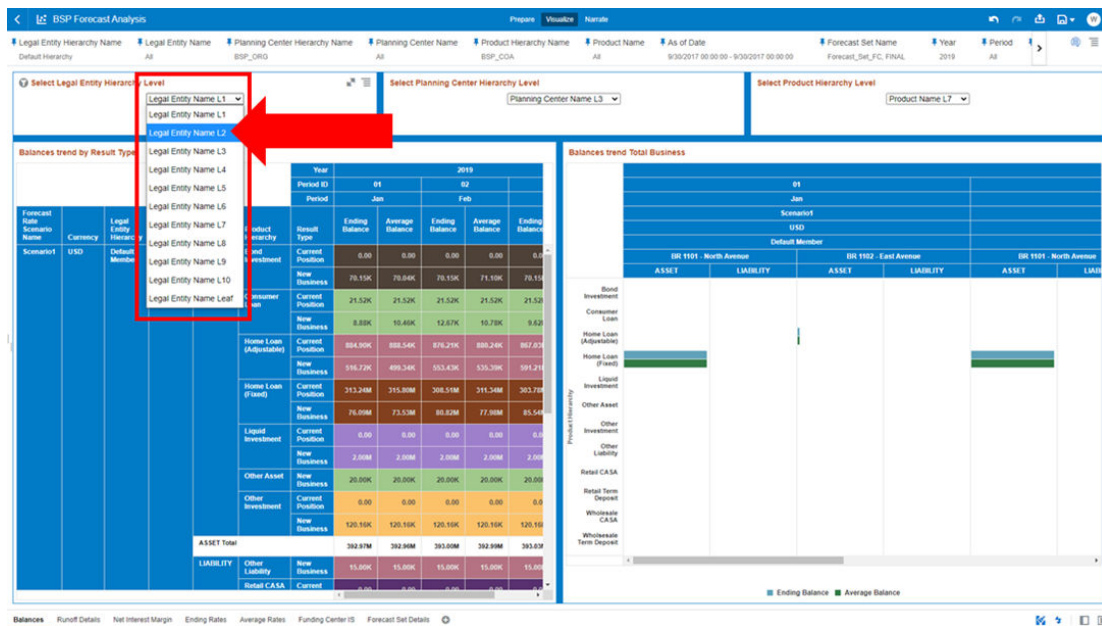
The following screenshot displays the updated Forecast Output results after the selection of the required Hierarchy Level for the “Planning Center Hierarchy”.

Figure 3-29 Hierarchy Level for the Planning Center Hierarchy



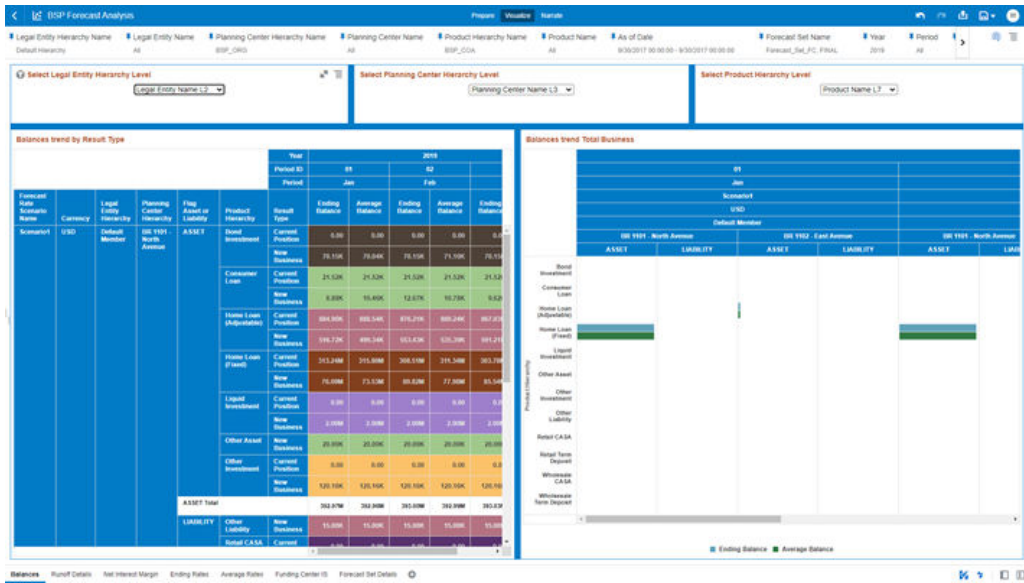
The following screenshot describes how to select a Hierarchy Level for the “Legal Entity Hierarchy”.

Figure 3-30 Hierarchy Level for the Legal Entity Hierarchy



The following screenshot displays the updated Forecast Output Results after the selection of the required Hierarchy Level for the “Legal Entity Hierarchy”.

Figure 3-31 Hierarchy Level for the Legal Entity Hierarchy



4

BSP BI Report Navigation and Content Details

This section describes the content available for the BSP BI Reports and how the available metrics are calculated.

Also, a description to navigate the Report content details is available.

4.1 General Remarks BSP BI Report Navigation and Content Details

The following reports are enabling drill-down and roll-up analysis for all Hierarchical Levels as explained in the previous chapter Use Report Hierarchical Levels.

Table 4-1 List OOTB Reports

SL.No	OOB Reports
1	Balances
2	Runoff Details
3	Net Interest Margin
4	Ending Rates
5	Average Rates
6	Funding Center IS
7	Forecast Set Details

For every report canvas, when doing roll-up and drill-down navigation of the results, the metrics are always displayed by “Asset” and “Liability”.

The following are the screenshots to demonstrate the same.

Figure 4-1 Metrics in terms of Asset and Liability

						Year						
						10		11		12		
						Period		Nov		Dec		
Forecast Rate Scenario Name	Currency	Legal Entity Hierarchy	Planning Center Hierarchy	Flag Asset or Liability	Product Hierarchy	Result Type	Ending Balance	Average Balance	Ending Balance	Average Balance	Ending Balance	Average Balance
Scenario1	USD	Default Member	QA Bank	ASSET	Total Rollup	Current Position	394.55M	397.16M	387.71M	391.41M	382.88M	385.49M
				ASSET Total		New Business	5.03M	2.33M	12.03M	8.24M	17.04M	14.34M
				LIABILITY	Total Rollup	Current Position	82.50K	82.57K	82.50K	82.50K	81.59K	82.01K
				LIABILITY Total		New Business	6.52K	5.59K	12.25K	11.72K	18.74K	18.07K
							88.02K	88.17K	94.75K	94.22K	100.73K	100.08K

Figure 4-2 Metrics in terms of Asset and Liability

Balances trend by Result Type

Forecast Rate Scenario Name	Currency	Legal Entity Hierarchy	Planning Center Hierarchy	Flag Asset or Liability	Product Hierarchy	Result Type	Year										
							10		11		12						
							Ending Balance	Average Balance	Ending Balance	Average Balance	Ending Balance	Average Balance					
Scenario1	USD	Default Member	QA Bank	ASSET	Bond Investment	Current Position	355.19K	352.49K	355.19K	355.19K	355.19K	355.19K					
						New Business	10.00K	5.00K	23.34K	16.70K	39.20K	31.23K					
					Consumer Loan	Current Position	31.09K	31.14K	31.09K	31.09K	30.29K	31.09K					
						New Business	5.73K	2.87K	1.95K	3.84K	8.51K	4.83K					
					Home Loan (Adjustable)	Current Position	7.50M	7.53M	7.45M	7.47M	7.39M	7.41M					
						New Business	208.36K	108.78K	419.74K	317.86K	636.97K	533.19K					
					Home Loan (Fixed)	Current Position	384.55M	387.14M	379.77M	382.45M	375.00M	377.59M					
						New Business	4.78M	2.19M	9.55M	6.88M	14.33M	11.74M					
					Liquid Investment	Current Position	2.00M	2.00M	0.00	1.00M	0.00	0.00					
						New Business	0.00	0.00	2.00M	1.00M	2.00M	2.00M					
					Other Asset	Current Position	20.00K	19.35K	16.00K	16.13K	20.00K	19.87K					
						New Business	20.00K	19.35K	16.00K	16.13K	20.00K	19.87K					
					Other Investment	Current Position	109.24K	109.24K	109.24K	109.24K	109.24K	109.24K					
						New Business	10.92K	5.46K	10.92K	10.92K	10.92K	10.92K					
					ASSET Total							399.58M	399.49M	399.74M	399.69M	399.92M	399.83M
					LIABILITY	Other Liability	New Business	5.00K	4.84K	10.00K	9.83K	15.00K	14.84K				
							Current Position	593.87	593.87	593.87	593.87	593.87	593.87				
						Retail CASA	New Business	118.78	59.39	0.00	59.39	118.78	59.39				
							Current Position	23.33K	23.33K	23.33K	23.33K	23.15K	23.16K				
						Retail Term Deposit	New Business	0.00	0.00	-0.22	0.00	181.75	175.88				
							Current Position	7.52K	7.52K	7.52K	7.52K	7.52K	7.52K				
						Wholesale CASA	New Business	752.15	376.08	1.08K	917.63	1.43K	1.26K				
							Current Position	51.05K	51.13K	51.05K	51.05K	50.73K	50.74K				
						Wholesale Term Deposit	New Business	651.65	319.06	1.17K	910.03	2.01K	1.74K				
Current Position	89.02K	88.17K	94.76K	94.22K			100.73K	100.08K									

4.2 BSP BI Report Formulae

The following table describes the BSP BI Reports Formulae used to calculate the displayed related Report Metrics.

Table 4-2 BI Report Formulae

Report Name	Report Metrics	Formula Financial Element Id	Formula Financial Element Name	Report Metrics Formula
Balances	Ending Balance	100	Ending Balance	SUM(100)
	Average Balance	140	Average Balance	SUM(140)
Runoff Details	New Add Balance	340	New Add Balance	SUM(340)
	Total Runoff	210	Total Runoff - Positive	SUM(210+212)
		212	Total Runoff - Negative	
	Payment Runoff	190	Payment Runoff - Positive	SUM(190+192)
		192	Payment Runoff - Negative	
	Maturity Runoff	195	Maturity Runoff - Positive	SUM(195+197)
197		Maturity Runoff - Negative		
Prepayment Runoff	180	Prepay Runoff - Positive	SUM(180+182)	
	182	Prepay Runoff - Negative		

Table 4-2 (Cont.) BI Report Formulae

Report Name	Report Metrics	Formula Financial Element Id	Formula Financial Element Name	Report Metrics Formula	
Net Interest Margin	Core Non-Maturity Runoff	200	Core Non-Maturity Runoff	SUM(200)	
	Volatile Non-Maturity Runoff	202	Volatile Non-Maturity Runoff	SUM(202)	
	Deferred Runoff	540	Deferred Runoff	SUM(540)	
	Net Interest Margin	440	Interest Accrued	SUM(440-450-414-415-416-417)	
		450	Transfer Rate Charge/Credit		
		414	Liquidity Adjustment Charge/Credit		
		415	Basis Risk Cost Charge/Credit		
		416	Pricing Incentive Charge/Credit		
		417	Other Adjustment Charge/Credit		
		Interest Accrued	440	Interest Accrued	SUM(440)
		Transfer Rate Charge/Credit	450	Transfer Rate Charge/Credit	SUM(450)
		Liquidity Adjustment Charge/Credit	414	Liquidity Adjustment Charge/Credit	SUM(414)
		Basis Risk Cost Charge/Credit	415	Basis Risk Cost Charge/Credit	SUM(415)
	Pricing Incentive Charge/Credit	416	Pricing Incentive Charge/Credit	SUM(416)	
	Other Adjustment Charge/Credit	417	Other Adjustment Charge/Credit	SUM(417)	
Ending Rates	Ending Net Interest Spread	120	Ending Net Rate	AVG((120-130-131-132-133-134)/100)	
		130	Ending Transfer Rate		
		131	Ending Liquidity Adjustment Rate		
		132	Ending Basis Risk Cost Rate		
		133	Ending Pricing Incentive Cost Rate		
		134	Ending Other Adjustment Rate		
		100	Ending Balance		
		Ending Net Rate	120	Ending Net Rate	AVG(120/100)
			100	Ending Balance	

Table 4-2 (Cont.) BI Report Formulae

Report Name	Report Metrics	Formula Financial Element Id	Formula Financial Element Name	Report Metrics Formula
	Ending Transfer Rate	130	Ending Transfer Rate	AVG(130/100)
		100	Ending Balance	
	Ending Liquidity Adjustment Rate	131	Ending Liquidity Adjustment Rate	AVG(131/100)
		100	Ending Balance	
	Ending Basis Risk Cost Rate	132	Ending Basis Risk Cost Rate	AVG(132/100)
		100	Ending Balance	
	Ending Pricing Incentive Cost Rate	133	Ending Pricing Incentive Cost Rate	AVG(133/100)
		100	Ending Balance	
	Ending Other Adjustment Rate	134	Ending Other Adjustment Rate	AVG(134/100)
		100	Ending Balance	
	Average Net Interest Spread	160	Average Net Rate	AVG((160-170-174-175-176-177)/140)
		170	Average Transfer Rate	
		174	Average Liquidity Adjustment Rate	
		175	Average Basis Risk Cost Rate	
		176	Average Pricing Incentive Rate	
		177	Average Other Adjustment Rate	
		140	Average Balance	
	Average Net Rate	160	Average Net Rate	AVG(160/140)
		140	Average Balance	
	Average Transfer Rate	170	Average Transfer Rate	AVG(170/140)
		140	Average Balance	
	Average Liquidity Adjustment Rate	174	Average Liquidity Adjustment Rate	AVG(174/140)
		140	Average Balance	
	Average Basis Risk Cost Rate	175	Average Basis Risk Cost Rate	AVG(175/140)
		140	Average Balance	
	Average Pricing Incentive Rate	176	Average Pricing Incentive Rate	AVG(176/140)
		140	Average Balance	
	Average Other Adjustment Rate	177	Average Other Adjustment Rate	AVG(177/140)
		140	Average Balance	

Table 4-2 (Cont.) BI Report Formulae

Report Name	Report Metrics	Formula Financial Element Id	Formula Financial Element Name	Report Metrics Formula
Funding Center IS	Net Interest Margin	414	Liquidity Adjustment Charge/Credit	SUM(450+414+415+416+417)
		415	Basis Risk Cost Charge/Credit	
		416	Pricing Incentive Charge/Credit	
		417	Other Adjustment Charge/Credit	
		450	Transfer Rate Charge/Credit	
	IS Liquidity Adjustment Charge/Credit	414	Liquidity Adjustment Charge/Credit	SUM(414)
	IS Basis Risk Cost Charge/Credit	415	Basis Risk Cost Charge/Credit	SUM(415)
	IS Pricing Incentive Charge/Credit	416	Pricing Incentive Charge/Credit	SUM(416)
	IS Other Adjustment Charge/Credit	417	Other Adjustment Charge/Credit	SUM(417)
	IS Transfer Rate Charge/Credit	450	Transfer Rate Charge/Credit	SUM(450)

4.3 BSP BI Report List

BSP BI Reports are out-of-the-box prebuilt reports which cater to results on the Forecast Run. The following listed reports are readily available in the Report Canvases with pre-computed metrics (see the BSP BI Report Formulae Section for more details) when the relevant data is made available as part of Instrument Data.

Table 4-3 BSP OOTB Reports

SL.No	OOB Reports
1	Balances
2	Runoff Details
3	Net Interest Margin
4	Ending Rates
5	Average Rates
6	Funding Center IS
7	Forecast Set Details

The following sections describe each report in detail and with available metrics.

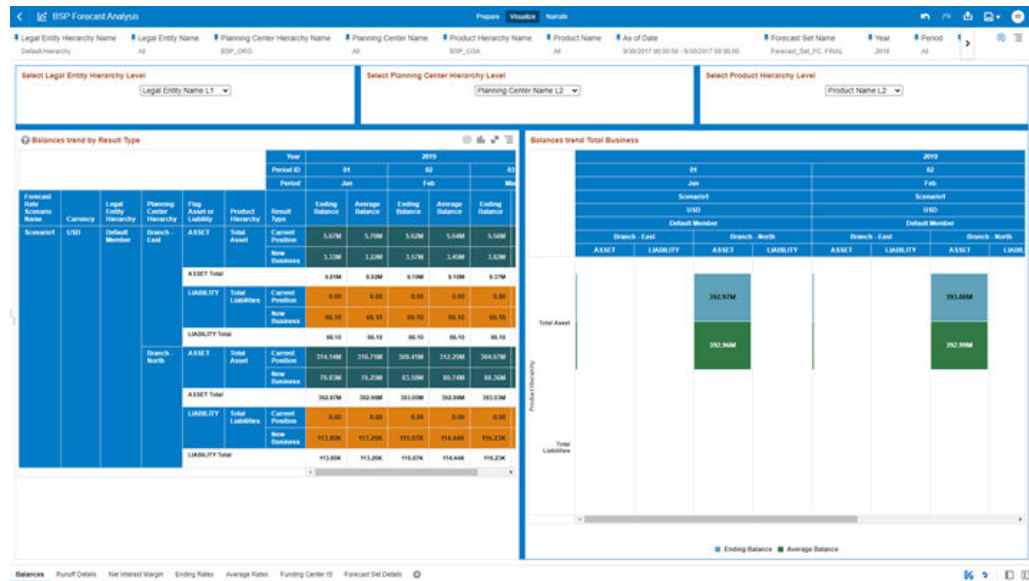
4.3.1 Balances

BSP Forecast Analysis Page is the gateway to all BSP OOB Reports and related functionality of the Project. From this Page, you can navigate to other related Pages. The following content is related to the “Balances” Report Canvas.

On the header of the BSP Forecast Analysis Page, you can perform a filter option to streamline data as per your operational focus.

BSP Balances focus to provide information on current Positions and New Businesses using Ending Balance and Average Balances. Additionally, optional report drivers can be leveraged to further focus on Balance Sheet Forecasting “Balances” classified by Assets & Liabilities.

Figure 4-3 BSP Forecast Analysis - Balances



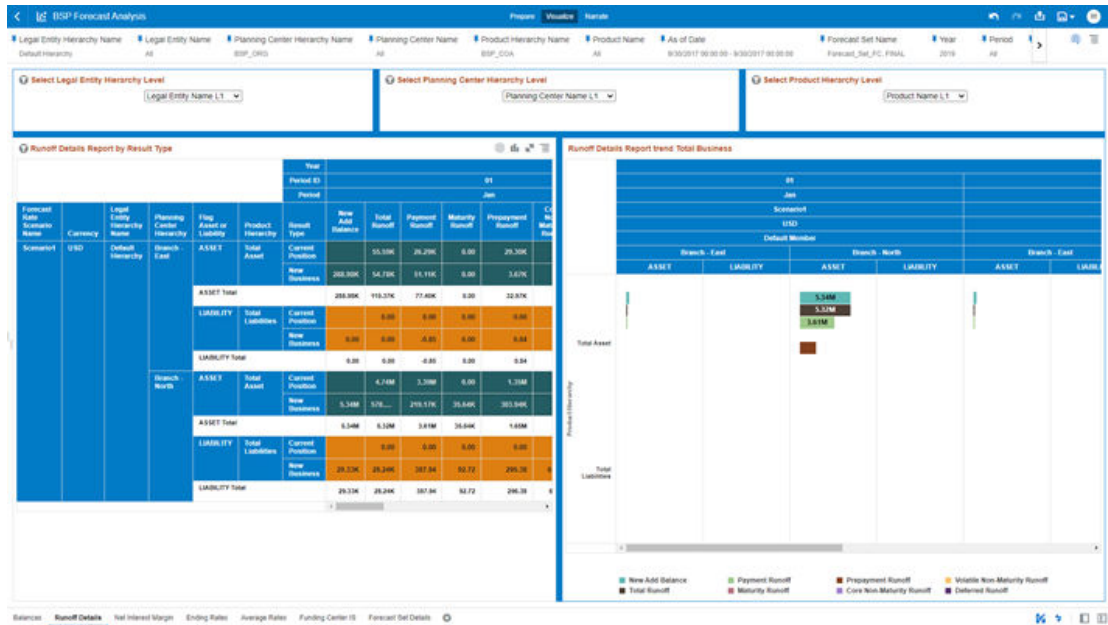
4.3.2 Runoff Details

BSP Forecast Analysis Page is the gateway to all BSP OOTB Reports and related functionality of the Project. From this Page, you can navigate to other related Pages. The following content is related to the “Runoff Details” Report Canvas.

On the header of the BSP Forecast Analysis Page, you can perform a filter operation to streamline data as per your operational focus.

BSP Runoff Details focuses to provide information on current Positions and New Businesses using New Add Balance, Total Runoff, Payment Runoff, Maturity Runoff, Prepayment Runoff, Core Non-Maturity Runoff, and Volatile Non-Maturity Runoff. Additionally, optional report drivers can be leveraged to further focus on Balance Forecasting “Runoff Details” classified by Assets & Liabilities.

Figure 4-4 BSP Forecast Analysis –Runoff Details



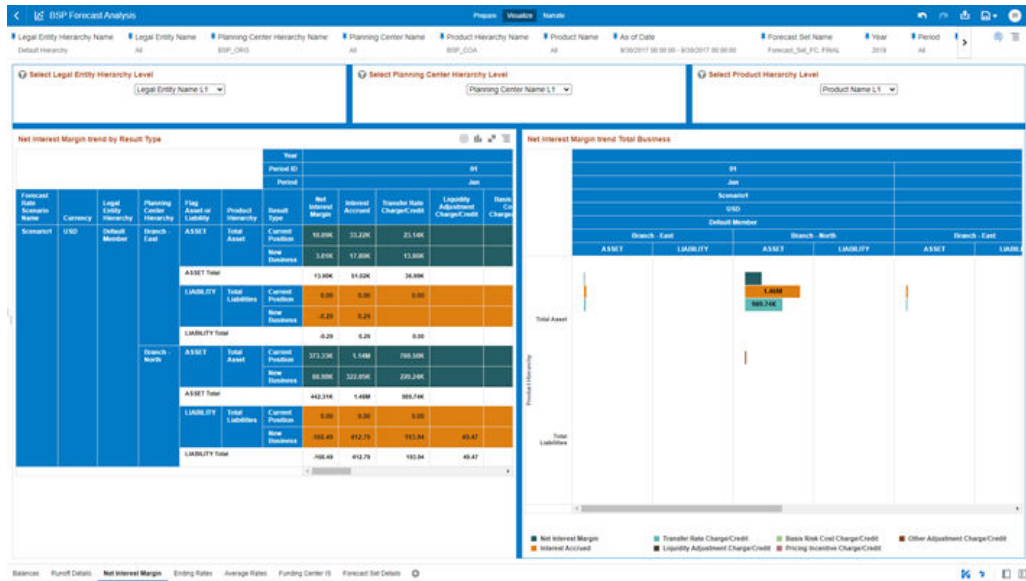
4.3.3 Net Interest Margin

BSP Forecast Analysis Page is the gateway to all BSP OOB Reports and related functionality of the Project. From this Page, you can navigate to other related Pages. The following content is related to the “Net Interest Margin” Report Canvas.

On the header of the BSP Forecast Analysis Page, you can perform a filter operation to streamline data as per your operational focus.

BSP Runoff Details focus to provide information on current Position and New business using Net Interest Margin, Interest Accrued, Transfer Rate Charge/Credit, Liquidity Adjustment Charge/Credit, Basis Risk Cost Charge/Credit, Pricing Incentive Charge/Credit, and Other Adjustment Charge/Credit. Additionally, Optional Report Drivers can be leveraged to further focus on Balance forecasting “Net Interest Margin” classified by Assets & Liabilities.

Figure 4-5 BSP Forecast Analysis – Net Interest Margin



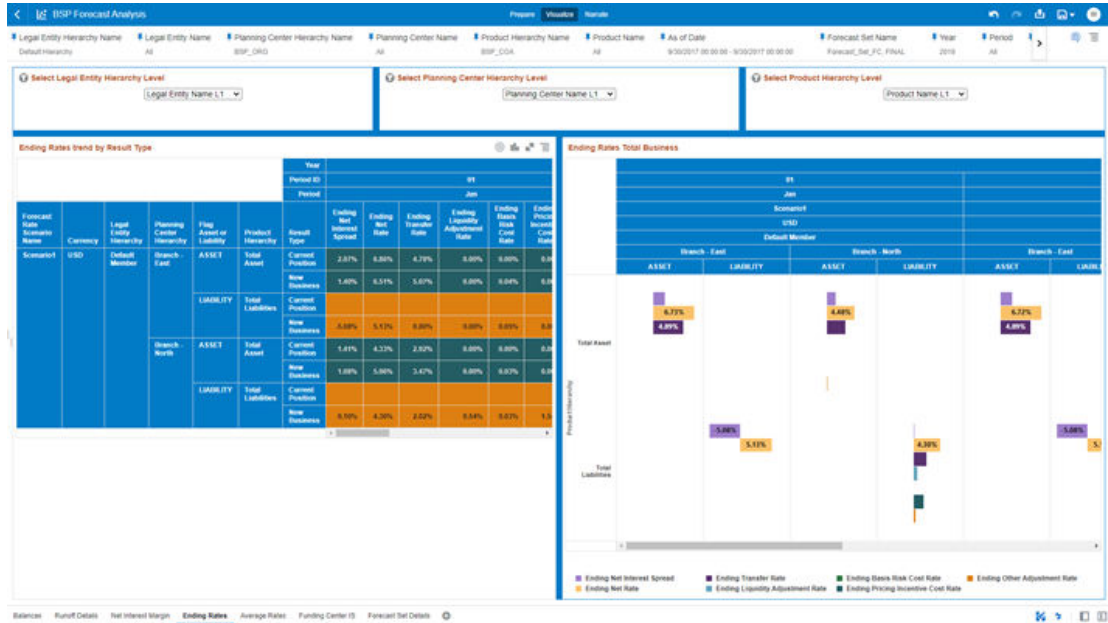
4.3.4 Ending Rates

BSP Forecast Analysis Page is the gateway to all the BSP OOB Reports and related functionality of the Project. From this Page, you can navigate to the other related Pages. The following content is related to the “Ending Rates” Report Canvas.

On the header of the BSP Forecast Analysis Page, you can perform a filter operation to streamline the data as per your operational focus.

BSP Runoff Details focus to provide the information on current Position and New business using Ending Net Interest Spread, Ending Net Rate, Ending Transfer Rate, Ending Liquidity Adjustment Rate, Ending Basis Risk Cost Rate, Ending Pricing Incentive Cost Rate, and Ending Other Adjustment Rate. Also, optional report drivers can be leveraged to further focus on Balance forecasting “Ending Rates” classified by Assets & Liabilities.

Figure 4-6 BSP Forecast Analysis – Ending Rates



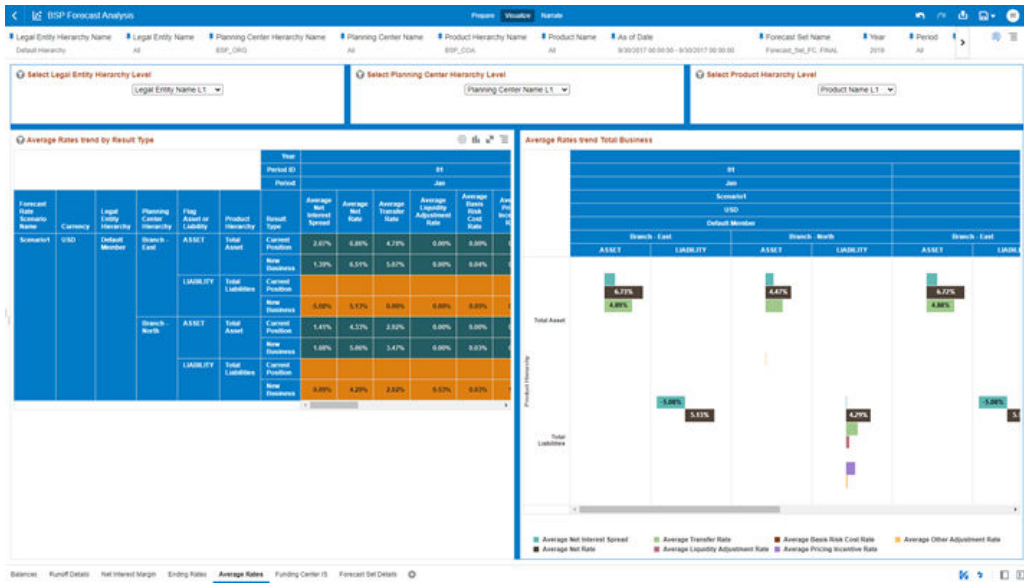
4.3.5 Average Rates

BSP Forecast Analysis Page is the gateway to all BSP OOB Reports and related functionality of the Project. From this Page, you can navigate to the other related Pages. The following content is related to the “Average Rates” Report Canvas.

On the header of the BSP Forecast Analysis Page, you can perform a filter operation to streamline data as per your operational focus.

BSP Runoff Details focuses to provide information on current Position and New business using Average Net Interest Spread, Average Net Rate, Average Transfer Rate, Average Liquidity Adjustment Rate, Average Basis Risk Cost Rate, Average Pricing Incentive Rate, and Average Other Adjustment Rate. Additionally, Optional Report Drivers can be leveraged to further focus on Balance Forecasting “Average Rates” classified by Assets & Liabilities.

Figure 4-7 BSP Forecast Analysis – Average Rates



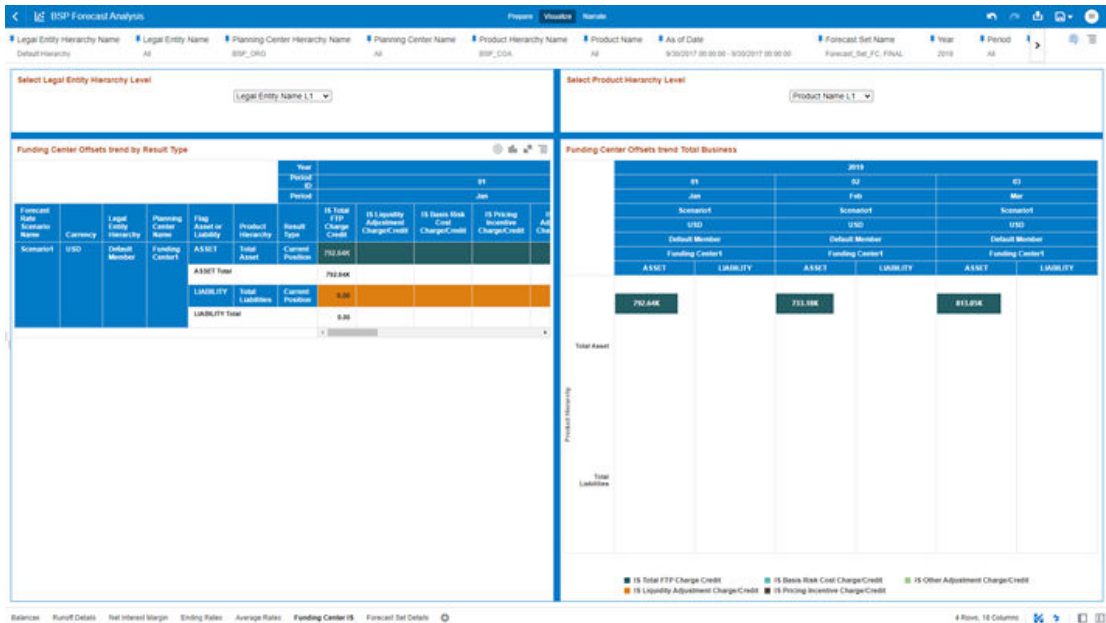
4.3.6 Funding Center IS (Income Statement)

BSP Forecast Analysis Page is the gateway to all the BSP OOB Reports and related functionality of the Project. From this Page, you can navigate to other related Pages. The following content is related to the “Funding Center IS” Report Canvas.

On the header of the BSP Forecast Analysis Page, you can perform a filter operation to streamline data as per your operational focus.

BSP Runoff Details focuses to provide information on Current Position and New Business IS Total FTP Charge Credit, IS Liquidity Adjustment Charge/Credit, IS Basis Risk Cost Charge/Credit, IS Pricing Incentive Charge/Credit, IS Other Adjustment Charge/Credit and IS Transfer Rate Charge/Credit. Additionally, Optional Report Drivers can be leveraged to further focus on Balance forecasting “Funding Center IS” classified by Assets & Liabilities.

Figure 4-8 BSP Forecast Analysis – Funding Center Income Statement

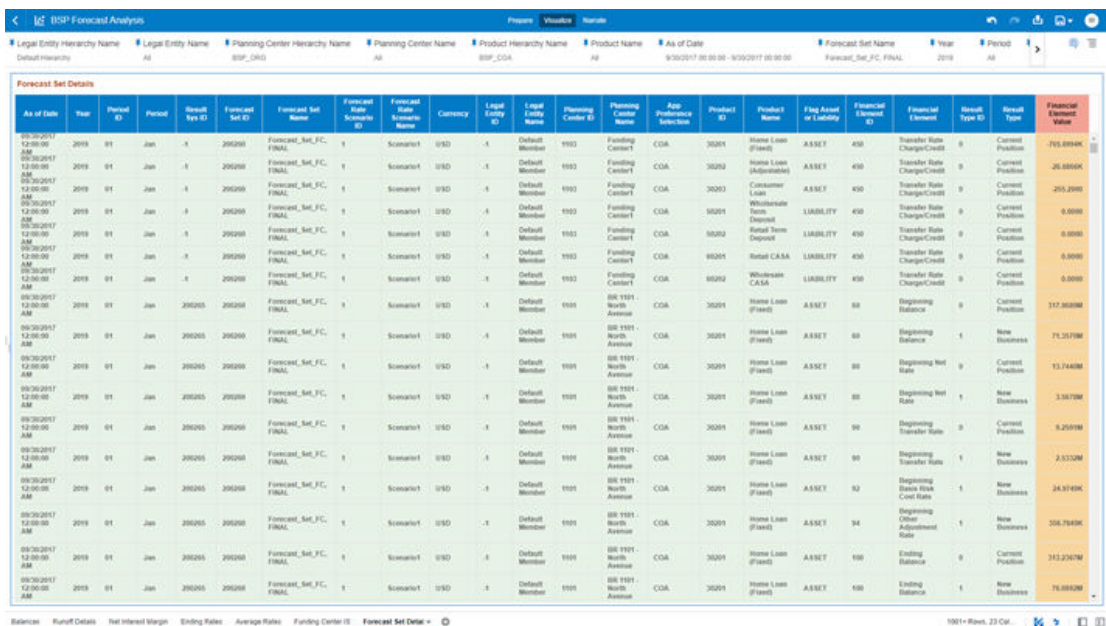


4.3.7 Forecast Set Details

BSP Forecast Analysis Page is the gateway to all BSP OOB Reports and related functionality of the Project. From this Page, you can navigate to other related Pages. The following content is related to the “Forecast Set Details” Report Canvas.

On the header of the BSP Forecast Analysis Page, you can perform a filter operation to streamline data as per your operational focus.

Figure 4-9 BSP Forecast Analysis – Forecast Set Details



In addition to Mandatory Report Drivers and Optional Report Drivers in the Forecast Set Details Report, we can select granular “Financial Element ID” and “Financial Element Name” as shown on the following screenshot.

Figure 4-10 BSP Forecast Analysis – Financial Element ID and Name

As of Date	Year	Period ID	Period	Result Type ID	Forecast Set ID	Forecast Set Name	Forecast Set Scenario Name	Forecast Set Scenario ID	Currency	Legal Entity ID	Legal Entity Name	Planning Center ID	Planning Center Name	App Preference Selection	Product ID	Product Name	Flag Asset or Liability	Financial Element ID	Financial Element Name	Flag	Value
19-03-2017 12:00:00 AM	2019	01	Jan	-1	200260	Forecast_Set_FC_FINAL	Scenario1	USD	-1	Default Member	1903	Funding Center1	COA	30201	Home Loan (Fixed)	ASSET	430	Transact Charge			
19-03-2017 12:00:00 AM	2019	01	Jan	-1	200260	Forecast_Set_FC_FINAL	Scenario1	USD	-1	Default Member	1903	Funding Center1	COA	30202	Home Loan (Adjustable)	ASSET	430	Transact Charge			
19-03-2017 12:00:00 AM	2019	01	Jan	-1	200260	Forecast_Set_FC_FINAL	Scenario1	USD	-1	Default Member	1903	Funding Center1	COA	30203	Consumer Loan	ASSET	430	Transact Charge			
19-03-2017 12:00:00 AM	2019	01	Jan	-1	200260	Forecast_Set_FC_FINAL	Scenario1	USD	-1	Default Member	1903	Funding Center1	COA	50201	Wholesale Term Deposit	LIABILITY	430	Transact Charge			
19-03-2017 12:00:00 AM	2019	01	Jan	-1	200260	Forecast_Set_FC_FINAL	Scenario1	USD	-1	Default Member	1903	Funding Center1	COA	50202	Retail Term Deposit	LIABILITY	430	Transact Charge			
19-03-2017 12:00:00 AM	2019	01	Jan	-1	200260	Forecast_Set_FC_FINAL	Scenario1	USD	-1	Default Member	1903	Funding Center1	COA	60201	Retail CASA	LIABILITY	430	Transact Charge			
19-03-2017 12:00:00 AM	2019	01	Jan	-1	200260	Forecast_Set_FC_FINAL	Scenario1	USD	-1	Default Member	1903	Funding Center1	COA	60202	Wholesale CASA	LIABILITY	430	Transact Charge			
19-03-2017 12:00:00 AM	2019	01	Jan	200265	200260	Forecast_Set_FC_FINAL	Scenario1	USD	-1	Default Member	1901	SR 1101 North Avenue	COA	30201	Home Loan (Fixed)	ASSET	60	Beginning Balance	0	Current Position	347,860RM
19-03-2017 12:00:00 AM	2019	01	Jan	200265	200260	Forecast_Set_FC_FINAL	Scenario1	USD	-1	Default Member	1901	SR 1101 North Avenue	COA	30201	Home Loan (Fixed)	ASSET	60	Beginning Balance	1	New Business	71,3570M
19-03-2017 12:00:00 AM	2019	01	Jan	200265	200260	Forecast_Set_FC_FINAL	Scenario1	USD	-1	Default Member	1901	SR 1101 North Avenue	COA	30201	Home Loan (Fixed)	ASSET	80	Beginning Net Rate	0	Current Position	13,7440M
19-03-2017 12:00:00 AM	2019	01	Jan	200265	200260	Forecast_Set_FC_FINAL	Scenario1	USD	-1	Default Member	1901	SR 1101 North Avenue	COA	30201	Home Loan (Fixed)	ASSET	80	Beginning Net Rate	1	New Business	3,5670M
19-03-2017 12:00:00 AM	2019	01	Jan	200265	200260	Forecast_Set_FC_FINAL	Scenario1	USD	-1	Default Member	1901	SR 1101 North Avenue	COA	30201	Home Loan (Fixed)	ASSET	90	Beginning Transfer Rate	0	Current Position	8,2594M
19-03-2017 12:00:00 AM	2019	01	Jan	200265	200260	Forecast_Set_FC_FINAL	Scenario1	USD	-1	Default Member	1901	SR 1101 North Avenue	COA	30201	Home Loan (Fixed)	ASSET	90	Beginning Transfer Rate	1	New Business	2,5320M
19-03-2017 12:00:00 AM	2019	01	Jan	200265	200260	Forecast_Set_FC_FINAL	Scenario1	USD	-1	Default Member	1901	SR 1101 North Avenue	COA	30201	Home Loan (Fixed)	ASSET	92	Beginning Base Risk Cost Rate	1	New Business	24,9749K
19-03-2017 12:00:00 AM	2019	01	Jan	200265	200260	Forecast_Set_FC_FINAL	Scenario1	USD	-1	Default Member	1901	SR 1101 North Avenue	COA	30201	Home Loan (Fixed)	ASSET	94	Beginning Other Adjustment Rate	1	New Business	356,7949K
19-03-2017 12:00:00 AM	2019	01	Jan	200265	200260	Forecast_Set_FC_FINAL	Scenario1	USD	-1	Default Member	1901	SR 1101 North Avenue	COA	30201	Home Loan (Fixed)	ASSET	100	Ending Balance	0	Current Position	313,2570M
19-03-2017 12:00:00 AM	2019	01	Jan	200265	200260	Forecast_Set_FC_FINAL	Scenario1	USD	-1	Default Member	1901	SR 1101 North Avenue	COA	30201	Home Loan (Fixed)	ASSET	100	Ending Balance	1	New Business	76,6892M

The Forecast Set Details Report supports the need for the end-user to download granular Financial Elements, before usage of both Mandatory Report Drivers and Optional Report Drivers, to work with the desired set outside of the BI Application UI.

The following screenshot describes the procedure to download the Forecast Set Details to a CSV file.

1. Click the **Export** button on the top right-hand side.
2. Select the **File** option in the prompted pane.
3. Select **Data (CSV)** for the format option.
4. Click **Save** and retrieve the downloaded file.

Figure 4-11 Forecast Set Details Report

BSP Forecast Analysis

Product Hierarchy Name: BSP_COA | Product Name: AJ | As of Date: 9/30/2017 00:00:00 - 9/30/2017 00:00:00 | Forecast Set Name: Forecast_Sel_FC_FINAL | Year: 2019 | Period: AJ | Forecast Rate Scenario Name: AJ | Currency: AJ | Result Type: AJ | Financial Element: AJ

Forecast Set Details

As of Date	Year	Period	Period	Result Sys ID	Forecast Set ID	Forecast Set Name	Forecast Rate Scenario Name	Currency	Legal Entity ID	Legal Entity Name	Planning Center ID	Planning Center Name	App Preference Selection	Product ID	Product Name	Flag Asset or Liability	Financial Element ID	Element	Result Type ID	Result Type	Financial Element Value
09/30/2017 12:00:00 AM	2019	01	Jan	-1	200260	Forecast_Sel_FC_FINAL	Scenario1	USD	-1	Default Member	1103	Funding Center1	COA	30201	Home Loan (Fixed)	ASSET	450	Transfer Rate Change/Credit	0	Current Position	-755,6094K
09/30/2017 12:00:00 AM	2019	01	Jan	-1	200260	Forecast_Sel_FC_FINAL	Scenario1	USD	-1	Default Member	1103	Funding Center1	COA	30202	Home Loan (Adjustable)	ASSET	450	Transfer Rate Change/Credit	0	Current Position	-25,6066K
09/30/2017 12:00:00 AM	2019	01	Jan	-1	200260	Forecast_Sel_FC_FINAL	Scenario1	USD	-1	Default Member	1103	Funding Center1	COA	30203	Consumer Loan	ASSET	450	Transfer Rate Change/Credit	0	Current Position	-255,2900
09/30/2017 12:00:00 AM	2019	01	Jan	-1	200260	Forecast_Sel_FC_FINAL	Scenario1	USD	-1	Default Member	1103	Funding Center1	COA	50201	Wholesale Term Deposit	LIABILITY	450	Transfer Rate Change/Credit	0	Current Position	0,0000
09/30/2017 12:00:00 AM	2019	01	Jan	-1	200260	Forecast_Sel_FC_FINAL	Scenario1	USD	-1	Default Member	1103	Funding Center1	COA	50202	Retail Term Deposit	LIABILITY	450	Transfer Rate Change/Credit	0	Current Position	0,0000
09/30/2017 12:00:00 AM	2019	01	Jan	-1	200260	Forecast_Sel_FC_FINAL	Scenario1	USD	-1	Default Member	1103	Funding Center1	COA	60201	Retail CASA	LIABILITY	450	Transfer Rate Change/Credit	0	Current Position	0,0000
09/30/2017 12:00:00 AM	2019	01	Jan	-1	200260	Forecast_Sel_FC_FINAL	Scenario1	USD	-1	Default Member	1103	Funding Center1	COA	60202	Wholesale CASA	LIABILITY	450	Transfer Rate Change/Credit	0	Current Position	0,0000
09/30/2017 12:00:00 AM	2019	01	Jan	200265	200260	Forecast_Sel_FC_FINAL	Scenario1	USD	-1	Default Member	1101	BR 1101 - North Avenue	COA	30201	Home Loan (Fixed)	ASSET	60	Beginning Balance	0	Current Position	317,9699M
09/30/2017 12:00:00 AM	2019	01	Jan	200265	200260	Forecast_Sel_FC_FINAL	Scenario1	USD	-1	Default Member	1101	BR 1101 - North Avenue	COA	30201	Home Loan (Fixed)	ASSET	60	Beginning Balance	1	New Business	71,3578M
09/30/2017 12:00:00 AM	2019	01	Jan	200265	200260	Forecast_Sel_FC_FINAL	Scenario1	USD	-1	Default Member	1101	BR 1101 - North Avenue	COA	30201	Home Loan (Fixed)	ASSET	60	Beginning Net Rate	0	Current Position	13,7460M
09/30/2017 12:00:00 AM	2019	01	Jan	200265	200260	Forecast_Sel_FC_FINAL	Scenario1	USD	-1	Default Member	1101	BR 1101 - North Avenue	COA	30201	Home Loan (Fixed)	ASSET	60	Beginning Net Rate	1	New Business	3,5678M
09/30/2017 12:00:00 AM	2019	01	Jan	200265	200260	Forecast_Sel_FC_FINAL	Scenario1	USD	-1	Default Member	1101	BR 1101 - North Avenue	COA	30201	Home Loan (Fixed)	ASSET	90	Beginning Transfer Rate	0	Current Position	9,2591M
09/30/2017 12:00:00 AM	2019	01	Jan	200265	200260	Forecast_Sel_FC_FINAL	Scenario1	USD	-1	Default Member	1101	BR 1101 - North Avenue	COA	30201	Home Loan (Fixed)	ASSET	90	Beginning Transfer Rate	1	New Business	2,5332M
09/30/2017 12:00:00 AM	2019	01	Jan	200265	200260	Forecast_Sel_FC_FINAL	Scenario1	USD	-1	Default Member	1101	BR 1101 - North Avenue	COA	30201	Home Loan (Fixed)	ASSET	92	Beginning Easte Risk Cost Rate	1	New Business	24,9749K
09/30/2017 12:00:00 AM	2019	01	Jan	200265	200260	Forecast_Sel_FC_FINAL	Scenario1	USD	-1	Default Member	1101	BR 1101 - North Avenue	COA	30201	Home Loan (Fixed)	ASSET	94	Beginning Other Adjustment Rate	1	New Business	356,7849K
09/30/2017 12:00:00 AM	2019	01	Jan	200265	200260	Forecast_Sel_FC_FINAL	Scenario1	USD	-1	Default Member	1101	BR 1101 - North Avenue	COA	30201	Home Loan (Fixed)	ASSET	100	Ending Balance	0	Current Position	-313,2367M
09/30/2017 12:00:00 AM	2019	01	Jan	200265	200260	Forecast_Sel_FC_FINAL	Scenario1	USD	-1	Default Member	1101	BR 1101 - North Avenue	COA	30201	Home Loan (Fixed)	ASSET	100	Ending Balance	1	New Business	76,0892M

Balances Runoff Details Net Interest Margin Ending Rates Average Rates Funding Center IS Forecast Set Details

1001+ Rows, 23 Col.

5

BSP BI Report Custom Configuration

This section describes the operations required to extend the default BSP BI Report Navigation Levels of the Hierarchies described in the previous chapter Use Report Hierarchical Levels as per your Organization's requirements.

5.1 Defaulted Hierarchical levels

The defaulted Optional Report Drivers for the following Hierarchies are available up to level 10.

- Legal Entity Hierarchy
- Planning Center Hierarchy
- Product Hierarchy

The same can be extended to the maximum permissible level of 20 as described in the following section.

Note that whenever a Hierarchical Level Value is not available, then Leaf Level Dimension Value is repeated for all subsequent levels till the 20th.

5.2 Amend Default Hierarchical levels

The following section describes the steps to amend the BSP BI Report Navigation Levels of the Hierarchies described in the previous chapter Use Report Hierarchical Levels.

The changes are required to the following Report Canvases (note that there are no hierarchies available in the "Forecast Details" Report Canvas and therefore, no changes are required on it):

- Balances – required changes to the following variable prompt charts:
 - Select Legal Entity Hierarchy Level
 - Select Planning Center Hierarchy Level
 - Select Product Hierarchy Level
- Runoff Details – required changes to the following variable prompt charts:
 - Select Legal Entity Hierarchy Level
 - Select Planning Center Hierarchy Level
 - Select Product Hierarchy Level
- Net Interest Margin – required changes to the following variable prompt charts:
 - Select Legal Entity Hierarchy Level
 - Select Planning Center Hierarchy Level
 - Select Product Hierarchy Level
- Ending Rates – required changes to the following variable prompt charts:

- Select Legal Entity Hierarchy Level
- Select Planning Center Hierarchy Level
- Select Product Hierarchy Level
- Average Rates – required changes to the following variable prompt charts:
 - Select Legal Entity Hierarchy Level
 - Select Planning Center Hierarchy Level
 - Select Product Hierarchy Level
- Funding Center IS – required changes to the following variable prompt charts:
 - Select Legal Entity Hierarchy Level
 - Select Product Hierarchy Level

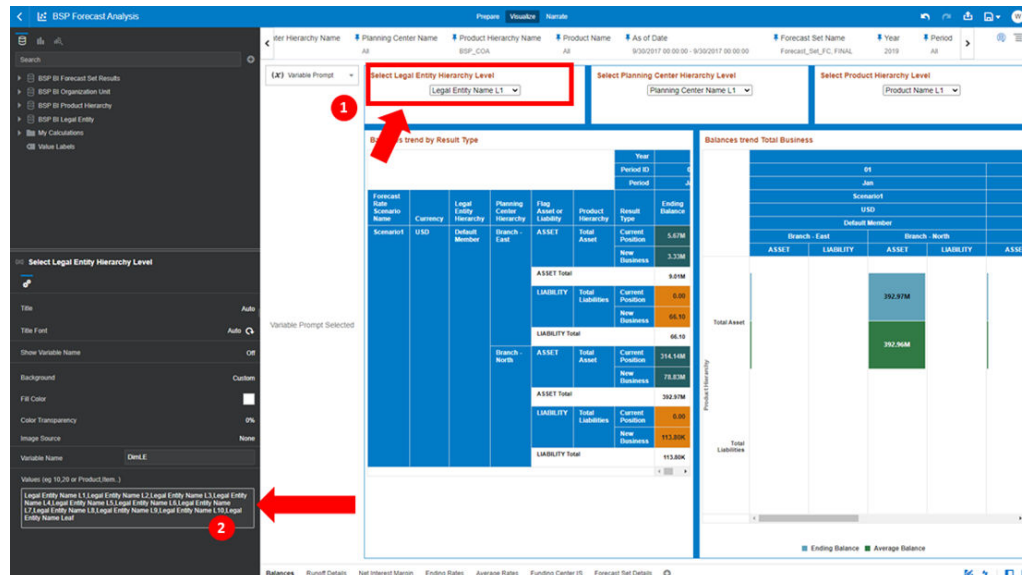
The following is an example of how to perform these changes for Report Canvas “Balance”, the same procedure must be followed for all the others Report Canvases as mentioned in the above list.

Select the variable prompt chart “Select Legal Entity Hierarchy Level” and from the bottom, left-hand-side Toggle Data Panel edit the desired number of level list in the section “Values (example 10, 20 or Product, Item and so on)” as shown in the following picture.

For example, if the required level list has to be amended up to the maximum permissible 20th level, then use the following string to apply this change:

Legal Entity Name L1,Legal Entity Name L2,Legal Entity Name L3,Legal Entity Name L4,Legal Entity Name L5,Legal Entity Name L6,Legal Entity Name L7,Legal Entity Name L8,Legal Entity Name L9,Legal Entity Name L10,Legal Entity Name L11,Legal Entity Name L12,Legal Entity Name L13,Legal Entity Name L14,Legal Entity Name L15,Legal Entity Name L16,Legal Entity Name L17,Legal Entity Name L18,Legal Entity Name L19,Legal Entity Name L20,Legal Entity Name Leaf

Figure 5-1 Select Legal Entity

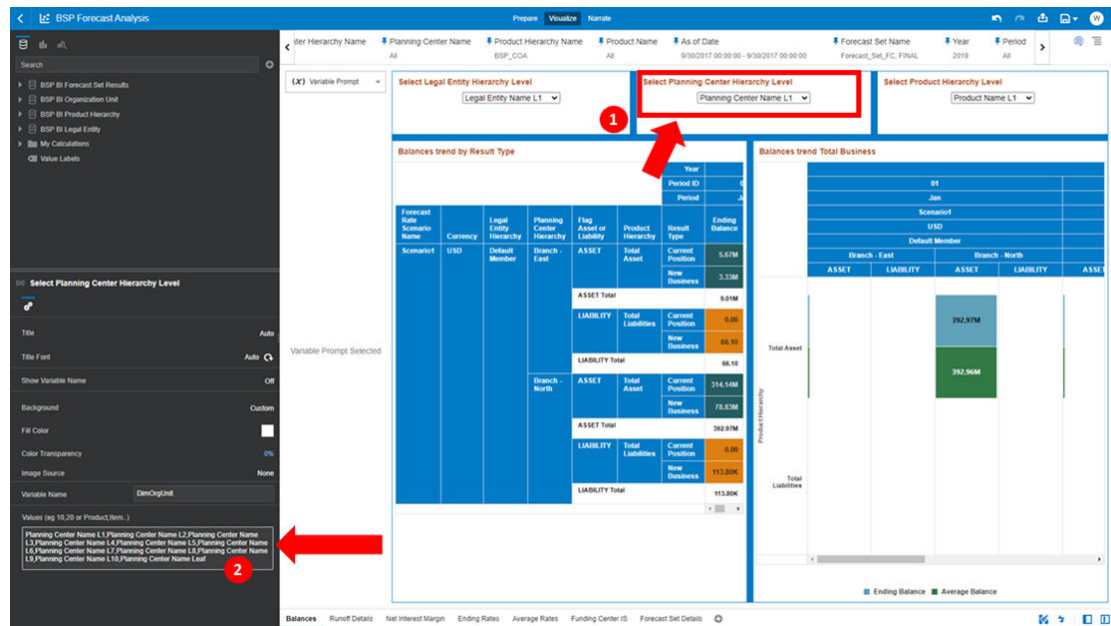


Select the variable prompt chart “Select Planning Center Hierarchy Level” and from the bottom, left-hand-side Toggle Data Panel edit the desired number of level list in the section “Values (example 10, 20 or Product, Item and so on)” as shown in the following picture.

For example, if the required level list has to be amended up to the maximum permissible 20th level use the following string to apply this change:

Planning Center Name L1, Planning Center Name L2, Planning Center Name L3, Planning Center Name L4, Planning Center Name L5, Planning Center Name L6, Planning Center Name L7, Planning Center Name L8, Planning Center Name L9, Planning Center Name L10, Planning Center Name L11, Planning Center Name L12, Planning Center Name L13, Planning Center Name L14, Planning Center Name L15, Planning Center Name L16, Planning Center Name L17, Planning Center Name L18, Planning Center Name L19, Planning Center Name L20, Planning Center Name Leaf

Figure 5-2 Select Planning Center Hierarchy Level



Select the variable prompt chart “Select Product Hierarchy Level” and from the bottom, left-hand-side Toggle Data Panel edit the desired number of level list in the section “Values (example 10, 20 or Product, Item and so on)” as shown in the following picture.

For example, in case the required level list has to be amended up to the maximum permissible 20th level use the following string to apply this change:

Product Name L1, Product Name L2, Product Name L3, Product Name L4, Product Name L5, Product Name L6, Product Name L7, Product Name L8, Product Name L9, Product Name L10, Product Name L11, Product Name L12, Product Name L13, Product Name L14, Product Name L15, Product Name L16, Product Name L17, Product Name L18, Product Name L19, Product Name L20, Product Name Leaf

Figure 5-3 Select Product Hierarchy Level

The screenshot displays the Oracle BSP Forecast Analysis interface. The top navigation bar includes 'BSP Forecast Analysis', 'Properties', 'Visualize', and 'Narrate'. Below the navigation bar, there are several dropdown menus for 'Legal Entity Hierarchy Level', 'Planning Center Hierarchy Level', and 'Product Hierarchy Level'. The 'Product Hierarchy Level' dropdown is highlighted with a red box and a red arrow labeled '1'. The main content area is divided into two panels: 'Balances trend by Result Type' and 'Balances trend Total Business'. The 'Balances trend by Result Type' panel contains a table with columns for 'Scenario', 'Currency', 'Default Member', 'Branch', 'Flag', 'Product Hierarchy', 'Product Type', 'Total Asset', 'Current Position', and 'New Business'. The 'Balances trend Total Business' panel shows a bar chart with 'Total Asset' and 'Total Liabilities' bars. A red arrow labeled '2' points to the 'Product Name L1' dropdown menu in the 'Balances trend by Result Type' panel.

Scenario	Currency	Default Member	Branch	Flag	Product Hierarchy	Product Type	Total Asset	Current Position	New Business
ASSET Total							9,894	0.00	66.15
LIABILITY Total							66.15	0.00	0.00
ASSET Total			Branch North				714,148	714,148	0.00
LIABILITY Total			Branch North				123,894	123,894	0.00
ASSET Total							392,974	392,974	0.00
LIABILITY Total							113,804	113,804	0.00