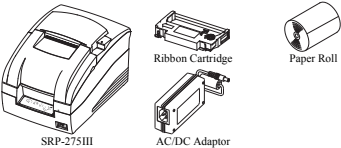


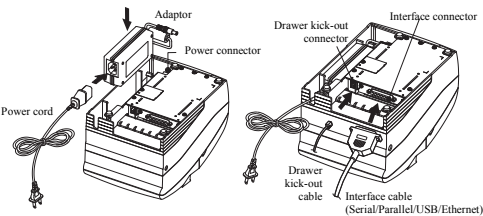
SRP-275III Impact Printer Installation Guide

◆ Components



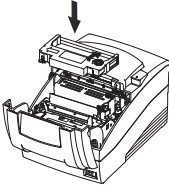
◆ Connecting the cables

- 1. Turn off the printer and the host ECR (host computer).
 - 2. Plug the power cord into the Adaptor, and then plug the Adaptor into the power connector of the printer.
 - 3. Check the interface cable (Serial, Parallel, USB, or Ethernet), and connect the interface connector cable accordingly.
 - 4. Plug the drawer kick-out cable into the drawer kick-out connector on the printer.
- ✱ Do not use an adaptor that was not supplied with the printer.



◆ Installing the Ribbon Cartridge

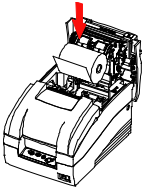
- 1. Before inserting the ribbon cartridge, turn the knob clockwise to prevent twisting of the ribbon.
- 2. Open the front cover of the printer and remove the old ribbon cartridge, if any.
- 3. Insert the ribbon cartridge as shown in the figure so that the ribbon is aligned to the rear of the printer head.
- 4. To allow the ribbon to move freely within the cartridge when inserting the ribbon cartridge, turn the knob clockwise once more.
- 5. Close the front cover of the printer.



✱ Note
Using unauthorized ribbon cartridges may result in poor printing quality or malfunction and will void the warranty. Refer to the product specifications in this guide to learn more about the ribbon cartridge.

◆ Installing the Paper Roll

- 1. Open the rear cover.
- 2. Insert a new paper roll, making sure to align it properly.
- 3. Pull out a small amount of paper, and close the cover.

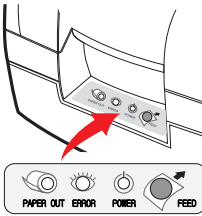


◆ Configuring the IP Address

To set the IP address when using the Ethernet interface, you must use the Bixolon *Ner Configuration Tool*. You can download the Bixolon *Ner Configuration Tool* and accompanying documentation from the following locations:

SRP-275III Downloads: https://www.bixolon.com/download_view.php?idx=26
User Guide: https://www.bixolon.com/_upload/manual/Manual_SRP-275III_user_english_Rev_1_02.pdf

◆ Using the Operation Panel



- FEED (Feed button)
Press the FEED button once to discharge extra paper. Holding down the FEED button will discharge paper continuously until the button is released.
- POWER (Power, Green LED)
When turning on the power, a green LED will be lit.
- ERROR (Error, Red LED)
When an error occurs, a red LED will be lit. (e.g. no paper, cover ajar, etc.)
- PAPER OUT (Out of paper, Red LED)
The paper LED will be red when the paper roll is running low. If there is no paper left, the paper LED will be on together with 'Error' LED.

◆ Setting the DIP Switches

Changing Dip Switch settings must be done when the printer is off. Any changes done while the printer is on will not be processed.

• DIP Switch 1				
SW	Function	ON	OFF	Default
1-1	Emulation	Refer to the following table 1		
1-2				
1-3	Auto Cutter	Enable	Disable	ON
1-4	Compatible with SRP-275	Enable	Disable	OFF
1-5	Serial Interface	Memory Switch		
1-6	Printing NV bit image after cutting	Enable	Disable	OFF
1-7	Near-End Sensor Status	Enable	Disable	ON
1-8	Printing column	42	40	OFF
• DIP Switch 2 (RS232C Serial Interface Model)				
SW	Function	ON	OFF	Default
2-1	Data Receive Error	Ignore	Print "??"	OFF
2-2	Black Mark Sensor	Enable	Disable	OFF
2-3	Handshaking	XON/XOFF	DTR/DSR	OFF
2-4	Data Length	7 bits	8 bits	OFF
2-5	Parity Check	Enable	Disable	OFF
2-6	Parity Selection	EVEN	ODD	OFF
2-7	Baud Rate Selection	Refer to the following table 2		
2-8				
• DIP Switch 2 (Parallel Interface Model)				
SW	Function	ON	OFF	Default
2-1	Auto Line Feed	Enable	Disable	OFF
2-2	Black Mark Sensor	Enable	Disable	OFF
2-3-8	Undefined			OFF
(1) DIP Switch setting for Citizen (iDP 3550) Mode				
• DIP Switch 1				
SW	Function	ON	OFF	Default
1-1	Emulation	Refer to the following table 1		
1-2				
1-3	Auto Cutter	Enable	Disable	OFF
1-4	CBM command	CBM2 Mode (iDP3530 System)	CBM1 Mode (iDP3540 System)	OFF
1-5	International Character	Refer to the following table 3		
1-6				
1-7				
1-8	CR Mode	CR	CR+LF	OFF
• DIP Switch 2 (RS232C Serial Interface Mode)				
SW	Function	ON	OFF	Default
2-1	Data Length	8bits	7bits	ON
2-2	Parity Check	Disable	Enable	ON
2-3	Parity Selection	ODD	EVEN	ON
2-4	Handshaking	DTR/DSR	XON/XOFF	ON
2-5	Baud Rate Selection	Refer to the following table 2		
2-6				
2-7	Near-End Sensor Status	Enable	Disable	OFF
2-8	Mechanism Type	Graphic	Text	OFF
(2) DIP Switch setting for Star (SP500) Mode				
• DIP Switch 1				
SW	Function	ON	OFF	Default
1-1	Emulation	Refer to the following table 1		
1-2				
1-3	Auto Cutter	Enable	Disable	OFF
1-4	Printing in Black/Red	Enable	Disable	OFF
1-5-8	Reserved			OFF
• DIP Switch 2 (RS232C serial interface model)				
SW	Function	ON	OFF	Default
2-1	Reserved			
2-2				
2-3	Handshaking	XON/XOFF	DTR/DSR	OFF
2-4	Data Length	7bits	8bits	OFF
2-5	Parity Check	Enable	Disable	OFF
2-6	Parity Selection	EVEN	ODD	OFF
2-7	Baud Rate Selection	Refer to the following table 2		
2-8				

• Table 1 – Emulation Selection

Emulation	1-1	1-2
BXL/POS	OFF	OFF
BXL/POS-KP	ON	ON
STAR	OFF	ON
CITIZEN	ON	OFF

• Table 2 – Transmission Speed (bps) Selection

Transmission	Setting		Citizen Mode	
	2-7	2-8	2-5	2-6
2400	ON	ON	ON	ON
4800	OFF	ON	OFF	ON
9600	OFF	OFF	OFF	OFF
19200	ON	OFF	ON	OFF

• BXL/POS-KP (Kitchen Printer Mode): Buzzer will sound when the automatic cutting function is activated or paper is low.

• Table 3 – International Language Selection

Country	DSW1-5	DSW1-6	DSW1-7	Code Page
U.S.A	ON	ON	ON	Page 0 (PC437 : USA)
France	OFF	ON	ON	
Germany	ON	OFF	ON	Page 2 (PC850 : Multilingual)
U.K.	OFF	OFF	ON	
Denmark	ON	ON	OFF	Page 5 (PC865 : Nordic)
Sweden	OFF	ON	OFF	
Italy	ON	OFF	OFF	Page 2 (PC850 : Multilingual)
Windows Code	OFF	OFF	OFF	Windows Code

◆ Self-Test

1. Turn the printer off and close the rear cover.
2. While holding down the FEED button, turn on the printer and continue to hold until the paper begins to feed. The self-test begins to print the printer settings and cuts the paper and pauses. (ERROR lamp will be on.)
3. Press the FEED button to print the rolling ASCII pattern.
4. When the rolling ASCII pattern is printed, the self-test mode automatically ends.

✱ Note

The self-test lets you know if your printer is operating properly. It checks the print quality, ROM version, and DIP switch settings.

◆ WEEE (Waste Electrical and Electric Equipment)



This marking shown on the product or its literature, indicates that it should not be disposed with other household wastes at the end of its working life. To prevent possible harm to the environment or human health from uncontrolled waste disposal, please separate this from other types of wastes and recycle it responsibly to promote the sustainable reuse of material resources. Household users should contact either the retailer where they purchased this product, or their local government office, for details of where and how they can take this item for environmentally safe recycling. Business users should contact their supplier and check the terms and conditions of the purchase contract. This product should not be mixed with other commercial wastes for disposal.

✉ BIXOLON Co., Ltd.

- **Website** <http://www.bixolon.com>
- **Korea Headquarters**
(Add) 7~8F, (Sampyeong-dong), 20, Pangyojeok-ro241 beon-gil,
Bundang-gu, Seongnam-si, Gyeonggi-do, 13494, Korea (ROK)
(Tel.) +82-31-218-5500
- **U.S. Office**
(Add) BIXOLON America Inc. 13705 Cimarron Ave Gardena, CA 90249
(Tel.) +1-858 764 4580
- **Europe Office**
(Add) BIXOLON Europe GmbH, Tiefenbroicher Weg 35 40472 Düsseldorf
(Tel.) +49 (0)211 68 78 54 0

Oracle MICROS

- **Website** <https://www.oracle.com/industries/micros/>
- **Customer Support** <https://support.oracle.com>

When contacting Customer Support, please provide the following:

- Product version and program/module name
- Functional and technical description of the problem (include business impact)
- Detailed step-by-step instructions to recreate
- Exact error message received
- Screenshots of each step you take

◆ Safety Precautions

In using the present appliance, please keep the following safety regulations in order to prevent any hazard or material damage.



WARNING

Violating following instructions can cause serious injury or death.

Do not plug several products in one multi-outlet.

- This can provoke over-heating and a fire.
- If the plug is wet or dirty, dry or wipe it before usage.
- If the plug does not fit perfectly with the outlet, do not plug in.
- Be sure to use only standardized multi-outlets.

PROHIBITED



You must use only the supplied adapter.

- It is dangerous to use other adapters.

PROHIBITED



Do not pull the cable to unplug.

- This can damage the cable, which is the origin of a fire or a breakdown of the printer.

PROHIBITED



Keep the plastic bag out of children's reach.

- If not, a child may put the bag on his head.

PROHIBITED



Do not plug in or unplug with your hands wet.

- You can be electrocuted.

PROHIBITED



Do not bend the cable by force or leave it under any heavy object.

- A damaged cable can cause a fire.

PROHIBITED



CAUTION

Violating following instructions can cause slight wound or damage the appliance.

If you observe a strange smoke, odor or noise from the printer, unplug it before taking following measures.

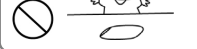
- Switch off the printer and unplug the set from the mains.
- After the disappearance of the smoke, call your dealer to repair it.



Keep the desiccant out of children's reach.

- If not, they may eat it.

PROHIBITED



Install the printer on the stable surface.

- If the printer falls down, it can be broken and you can hurt yourself.

PROHIBITED



Use only approved accessories and do not try to disassemble, repair or remodel it for yourself.

- Call your dealer when you need these services.
- Do not touch the blade of auto cutter.

DISASSEMBLING
PROHIBITED



Do not let water or other foreign objects in the printer.

- If this happened, switch off and unplug the printer before calling your dealer.



Do not use the printer when it is out of order. This can cause a fire or an electrocution.

- Switch off and unplug the printer before calling your dealer.



F57438-01

Oracle Legal Notices

Copyright Notice

Copyright © 2022 Oracle and/or its affiliates.

License Restrictions Warranty/Consequential Damages Disclaimer

This software and related documentation are provided under a license agreement containing restrictions on use and disclosure and are protected by intellectual property laws. Except as expressly permitted in your license agreement or allowed by law, you may not use, copy, reproduce, translate, broadcast, modify, license, transmit, distribute, exhibit, perform, publish, or display any part, in any form, or by any means. Reverse engineering, disassembly, or decompilation of this software, unless required by law for interoperability, is prohibited.

Warranty Disclaimer

The information contained herein is subject to change without notice and is not warranted to be error-free. If you find any errors, please report them to us in writing.

Restricted Rights Notice

If this is software or related documentation that is delivered to the U.S. Government or anyone licensing it on behalf of the U.S. Government, then the following notice is applicable:

U.S. GOVERNMENT END USERS: Oracle programs (including any operating system, integrated software, any programs embedded, installed or activated on delivered hardware, and modifications of such programs) and Oracle computer documentation or other Oracle data delivered to or accessed by U.S. Government end users are "commercial computer software" or "commercial computer software documentation" pursuant to the applicable Federal Acquisition Regulation and agency-specific supplemental regulations. As such, the use, reproduction, duplication, release, display, disclosure, modification, preparation of derivative works, and/or adaptation of i) Oracle programs (including any operating system, integrated software, any programs embedded, installed or activated on delivered hardware, and modifications of such programs), ii) Oracle computer documentation and/or iii) other Oracle data, is subject to the rights and limitations specified in the license contained in the applicable contract. The terms governing the U.S. Government's use of Oracle cloud services are defined by the applicable contract for such services. No other rights are granted to the U.S. Government.

Hazardous Applications Notice

This software or hardware is developed for general use in a variety of information management applications. It is not developed or intended for use in any inherently dangerous applications, including applications that may create a risk of personal injury. If you use this software or hardware in dangerous applications, then you shall be responsible to take all appropriate fail-safe, backup, redundancy, and other measures to ensure its safe use. Oracle Corporation and its affiliates disclaim any liability for any damages caused by use of this software or hardware in dangerous applications.

Trademark Notice

Oracle, Java, and MySQL are registered trademarks of Oracle and/or its affiliates. Other names may be trademarks of their respective owners.

Intel and Intel Inside are trademarks or registered trademarks of Intel Corporation. All SPARC trademarks are used under license and are trademarks or registered trademarks of SPARC International, Inc. AMD, Epyc, and the AMD logo are trademarks or registered trademarks of Advanced Micro Devices. UNIX is a registered trademark of The Open Group.

Third-Party Content, Products, and Services Disclaimer

This software or hardware and documentation may provide access to or information about content, products, and services from third parties. Oracle Corporation and its affiliates are not responsible for and expressly disclaim all warranties of any kind with respect to third-party content, products, and services unless otherwise set forth in an applicable agreement between you and Oracle. Oracle Corporation and its affiliates will not be responsible for any loss, costs, or damages incurred due to your access to or use of third-party content, products, or services, except as set forth in an applicable agreement between you and Oracle.

Documentation Accessibility

For information about Oracle's commitment to accessibility, visit the Oracle Accessibility Program website at <http://www.oracle.com/pls/topic/lookup?ctx=acc&id=docacc>

Access to Oracle Support

Oracle customers that have purchased support have access to electronic support through My Oracle Support. For information, visit <http://www.oracle.com/pls/topic/lookup?ctx=acc&id=info> or visit <http://www.oracle.com/pls/topic/lookup?ctx=acc&id=trs> if you are hearing impaired.