

## Notices

### Important Safety Guidelines

To prevent possible injury, please read all instructions and safety information before you use the product.

- To avoid injury, unauthorized persons shall not open the power adapter.
- This is a Class A product. This product may cause radio interference in living environments. In that case, the user may be required to take adequate measures against interference.
- Caution!** Always use OEM-supplied or recommended batteries; **incorrect battery types may increase the risk of fire or explosion.** Dispose of used batteries according to the manufacturer's instructions and local laws and regulations.
- Turn off the power immediately if you notice abnormal odors, heat, or smoke.
- To prevent damage which may result in fire or shock hazard, do not expose the device to rain or moisture.
- Do not use the device in extremely cold or hot environments.
- Do not drop, throw, or bend the device.
- Use the device in a clean, dust-free environment to prevent the intrusion of small debris/particles.
- Do not use the device near medical equipment without permission.

### Statements

Oracle does not assume responsibilities for the following actions:

- Damage caused by use and maintenance that does not comply with the conditions specified in this guide.
- Damage or problems caused by optional items or consumables.
- The customer is not entitled to change or modify the product without our consent.
- Damage caused by unauthorized modifications to the device software image. Unauthorized modifications to the device software image may introduce system instability and increase security vulnerabilities.

### Disclaimer

The information contained herein is subject to change without notice and is not warranted to be error-free. If you find any errors, please report them to us in writing.

### Technical Specifications

Operating temperature: -20°C to 55°C  
Storage temperature: -40°C to 70°C  
Battery charging ambient temperature: 0°C to 45°C

## EU Regulatory Conformance

### Conformity CE

Hereby, Shanghai Sunmi Technology Co., Ltd. declares that this device is in compliance with the essential requirements and other relevant provisions of Radio Equipment Directive 2014/53/EU. The full text of the EU declaration of conformity is available at the following internet address: <https://developer.sunmi.com/docs/read/en-US/maaeghjk480>


### Information About the Software

The description of accessories and components, including software, which allow the radio equipment to operate as intended, can be obtained in the full text of the EU declaration of conformity at the following internet address: <https://developer.sunmi.com/docs/read/en-US/maaeghjk480>

### Restrictions of Use

The 5150-5350MHz band is restricted to indoor use in the UK and for the following countries:

	AT	BE	BG	CY	CZ	DE	DK	EE	ES	FI	FR
	GR	HU	IE	IT	LT	LU	LV	MT	NL	PL	PT
	RO	SE	SI	SK	UK (NI)						

 EU Representative: SUNMI France SAS  
186, avenue Thiers, 69006 Lyon, France



This symbol means that it is forbidden to dispose of the product with normal household waste. At the end of the product life cycle, waste equipment should be taken to designated collection points, returned to the distributor when purchasing a new product, or contact your local authority representative for detailed information on WEEE recycling.

### FCC Statement

This device complies with Part 15 of the FCC Rules. Operation is subject to the following two conditions: (1) this device may not cause harmful interference, and (2) this device must accept any interference received, including interference that may cause undesired operation. Note: This equipment has been tested and found to comply with the limits for a Class B digital device, pursuant to part 15 of the FCC Rules. These limits are designed to provide reasonable protection against harmful interference in a residential installation. This equipment generates, uses, and can radiate radio frequency energy and, if not installed and used in accordance with the instructions, may cause harmful interference to radio communications. However, there is no guarantee that interference will not occur in a particular installation. If this equipment does cause harmful interference to radio or television reception, which can be determined by turning the equipment off and on, the user is encouraged to try to correct the interference by one or more of the following measures:  
—Reorient or relocate the receiving antenna.  
—Increase the separation between the equipment and receiver.  
—Connect the equipment into an outlet on a circuit different from that to which the receiver is connected.  
—Consult the dealer or an experienced radio/TV technician for help.  
Caution: Changes or modifications not expressly approved by the party responsible for compliance could void the user's authority to open the equipment.

## RF Exposure Statement (SAR)

This device has been tested and meets EU, FCC and IC RSS-102 applicable limits for radio frequency (RF) exposure. Please visit: [www.sunmi.com](http://www.sunmi.com)

### ISED Canada Compliance Statements

This device complies with ISED Canada licence-exempt RSS standard(s). Operation is subject to the following two conditions: (1) this device may not cause interference, and (2) this device must accept any interference, including interference that may cause undesired operation of the device.

Le présent appareil est conforme aux CNR d'ISDE Canada applicables aux appareils radio exempts de licence. L'exploitation est autorisée aux deux conditions suivantes: (1) L'appareil ne doit pas produire de brouillage, et (2) L'appareil doit accepter tout brouillage radioélectrique subi, même si le brouillage est susceptible d'en compromettre le fonctionnement.

The device for operation in the band 5150-5250 MHz is only for indoor use to reduce the potential for harmful interference to co-channel mobile satellite systems;

Les dispositifs fonctionnant dans la bande 5150-5250 MHz sont réservés uniquement pour une utilisation à l'intérieur afin de réduire les risques de brouillage préjudiciable aux systèmes de satellites mobiles utilisant les mêmes canaux.

### Oracle MICROS

#### Website

<https://www.oracle.com/industries/micros/>

#### Customer Support

<https://support.oracle.com>

When contacting Customer Support, please provide the following:

- Product version and program/module name
- Functional and technical description of the problem (include business impact)
- Detailed step-by-step instructions to recreate
- Exact error message received
- Screenshots of each step you take

Model: T8920

#### Manufacturer

Shanghai Sunmi Technology Co., Ltd.  
Room 505, No.388 Song Hu Road, Yang Pu District, Shanghai, China

Copyright © 2023, Oracle and/or its affiliates.

ORACLE

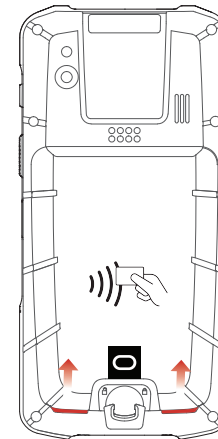
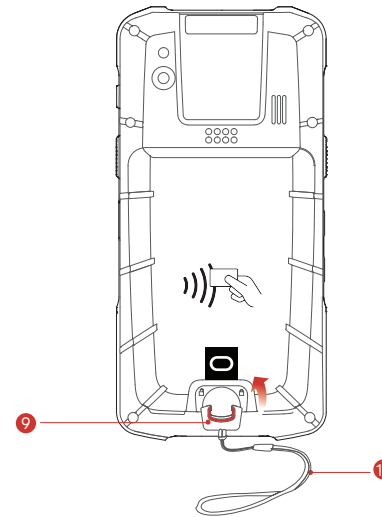
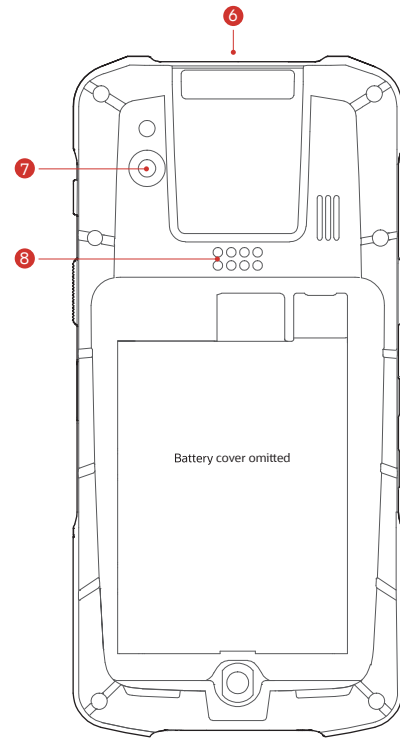
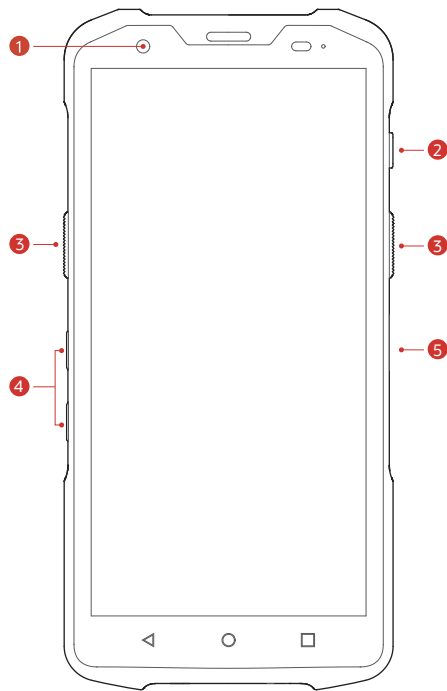
# Oracle MICROS Handheld 500

## Quick Start Guide



MICROS-500-343

F78951-01



## Quick Start Guide

### 1 Front Camera

### 2 Power Button

Short press: Turn on/lock the screen.

Long press: When the device is off, press for 2-3 seconds to start the device.

When the device is on, press for 2-3 seconds to shut down or restart.

To perform a forced restart, press for 11 seconds.

### 3 Scan Button

Short press either button to enable scanning function.

### 4 Volume Button

Volume up/down.

### 5 Function Button

You can set a shortcut function.

### 6 Barcode Scanner

For data collection through scanning.

**Caution: Do not stare into barcode scanner light.**

### 7 Rear Camera

For photo taking and 1D/2D barcode scanning.

### 8 Contacts for Accessories

For connecting related accessories.

### 9 Battery Cover Lock

Lift the knob and rotate to the unlock position to open the battery cover.

**Note: The battery cover must be installed in order for the device to operate.**

### 10 Wrist Lanyard

## What's in the Box

- 1x Oracle MICROS Handheld 500 with battery and wrist lanyard
- 1x USB-C cable
- 1x Quick start guide