

Oracle® MICROS Symphony

Transaction Services Generation 2 API Reference Guide



Release 19.4
F56815-08
April 2023

The Oracle logo, consisting of a solid red square with the word "ORACLE" in white, uppercase, sans-serif font centered within it.

ORACLE®

Copyright © 2020, 2023, Oracle and/or its affiliates. All rights reserved.

This software and related documentation are provided under a license agreement containing restrictions on use and disclosure and are protected by intellectual property laws. Except as expressly permitted in your license agreement or allowed by law, you may not use, copy, reproduce, translate, broadcast, modify, license, transmit, distribute, exhibit, perform, publish, or display any part, in any form, or by any means. Reverse engineering, disassembly, or decompilation of this software, unless required by law for interoperability, is prohibited.

The information contained herein is subject to change without notice and is not warranted to be error-free. If you find any errors, please report them to us in writing.

If this software or related documentation is delivered to the U.S. Government or anyone licensing it on behalf of the U.S. Government, then the following notice is applicable:

U.S. GOVERNMENT END USERS: Oracle programs, including any operating system, integrated software, any programs installed on the hardware, and/or documentation, delivered to U.S. Government end users are "commercial computer software" pursuant to the applicable Federal Acquisition Regulation and agency-specific supplemental regulations. As such, use, duplication, disclosure, modification, and adaptation of the programs, including any operating system, integrated software, any programs installed on the hardware, and/or documentation, shall be subject to license terms and license restrictions applicable to the programs. No other rights are granted to the U.S. Government.

This software or hardware is developed for general use in a variety of information management applications. It is not developed or intended for use in any inherently dangerous applications, including applications that may create a risk of personal injury. If you use this software or hardware in dangerous applications, then you shall be responsible to take all appropriate fail-safe, backup, redundancy, and other measures to ensure its safe use. Oracle Corporation and its affiliates disclaim any liability for any damages caused by use of this software or hardware in dangerous applications.

Oracle and Java are registered trademarks of Oracle and/or its affiliates. Other names may be trademarks of their respective owners.

Intel and Intel Xeon are trademarks or registered trademarks of Intel Corporation. All SPARC trademarks are used under license and are trademarks or registered trademarks of SPARC International, Inc. AMD, Opteron, the AMD logo, and the AMD Opteron logo are trademarks or registered trademarks of Advanced Micro Devices. UNIX is a registered trademark of The Open Group.

This software or hardware and documentation may provide access to or information about content, products, and services from third parties. Oracle Corporation and its affiliates are not responsible for and expressly disclaim all warranties of any kind with respect to third-party content, products, and services unless otherwise set forth in an applicable agreement between you and Oracle. Oracle Corporation and its affiliates will not be responsible for any loss, costs, or damages incurred due to your access to or use of third-party content, products, or services, except as set forth in an applicable agreement between you and Oracle.

Contents

| | |
|-----------------------------------|------|
| Preface | v |
| <hr/> | |
| 1 Introduction | 1-1 |
| <hr/> | |
| Response Codes | 1-2 |
| 2 Authentication | 2-1 |
| <hr/> | |
| Authorization Code Flow with PKCE | 2-1 |
| Authorize | 2-2 |
| Sign In | 2-3 |
| Get or Refresh a Token | 2-5 |
| Using the id_token in API Calls | 2-6 |
| 3 Organization API | 3-1 |
| <hr/> | |
| Paths | 3-1 |
| Resources | 3-19 |
| Definitions | 3-24 |
| 4 Configuration API | 4-1 |
| <hr/> | |
| Paths | 4-1 |
| Resources | 4-18 |
| Definitions | 4-26 |
| 5 Checks API | 5-1 |
| <hr/> | |
| Paths | 5-1 |
| Resources | 5-14 |
| Definitions | 5-16 |
| 6 Employees API | 6-1 |
| <hr/> | |
| Paths | 6-1 |
| Resources | 6-3 |
| Definitions | 6-4 |
| 7 Notifications API | 7-1 |
| <hr/> | |
| Paths | 7-2 |
| Resources | 7-12 |
| Definitions | 7-13 |

8 Connection Status

8-1

Paths

8-1

Preface

Purpose

This document describes the Symphony Transaction Services Generation 2 (STSG2) API feature set for Oracle MICROS Food and Beverage and includes a detailed specification for each API message.

Audience

This document is intended for developers who develop integrations for exchanging data with Oracle MICROS Symphony.

Customer Support

To contact Oracle Customer Support, access My Oracle Support at the following URL:

<https://support.oracle.com>

When contacting Customer Support, please provide the following:

- Product version and program/module name
- Functional and technical description of the problem (include business impact)
- Detailed step-by-step instructions to re-create
- Exact error message received and any associated log files
- Screenshots of each step you take

Documentation

Oracle Food and Beverage product documentation is available on the Oracle Help Center at <http://docs.oracle.com/en/industries/food-beverage/>

Revision History

| Date | Description of Change |
|----------------|---|
| September 2022 | Initial publication. |
| February 2023 | Updated Get or Refresh a Token in chapter 2. |
| April 2023 | Updated the Checks API, Notifications API, and Connections Status chapters. |

1

Introduction

The Symphony Transaction Services Gen2 (STSG2) API is a cloud offering that is provisioned by Oracle and available for use with new deployments of the Symphony Cloud Service.

STSG2 provides a RESTful interface for transaction processing and complementary services that will be available both in the cloud as well as within the location. The exposed APIs are stateless and highly scalable, supporting large multi-tenanted Oracle Food and Beverage Cloud environments.

The Organizations API provides the ability to get information about the following subject areas:

- Organizations (as well as search for locations within an organization)
- Locations
- Revenue Centers

The Configuration API provides the ability to get information about the following subject areas using the organizational related details acquired from the Organizations API:

- Tables
- Menu (menu items, condiments, condiment rules, pricing)
- Discounts
- Service Charges
- Tenders
- Taxes
- Menu Item Availability

The Checks API provides the ability to calculate, create and manage checks within a revenue center using the details acquired from the Organizations and Configuration APIs. The exposed endpoints fall into the following subject areas:

- Calculations
- Check Operations

The Employee API provides the ability to get information about the following subject areas within a property:

- Employee

Notifications API provides the ability to manage call back POST notifications messages that are sent to the integrator when they register to receive a notification for following events:

- Organization
- Configuration

- Check
- Employee

Response Codes

HTTP response codes will be one of the following:

- 2xx - Indicates successful call: 200 (OK) or 201 (Created).
- 4xx - Indicates unsuccessful call: not authorized, not found, unacceptable header, or unsupported media type.
- 500 - Indicates internal error, plus the exceptionDetailType JSON object:
- 503 - Indicates a service is currently unavailable.

2

Authentication

STSG2 APIs utilizes tokens provided by the OpenID Connect (OIDC) authentication protocol. Users of this API are expected to send a request to the Enterprise Back Office OpenID provider (OP). The OP authenticates the end user and responds with an ID token and a refresh token. The client can then send a request with the ID token to the STSG2 API endpoint.

Successful OAuth transactions require the Oracle OP to issue an `id_token` for use in authenticating an API call. An `id_token` represents an authentication issued to the client application containing credentials used to access protected OAuth resources.

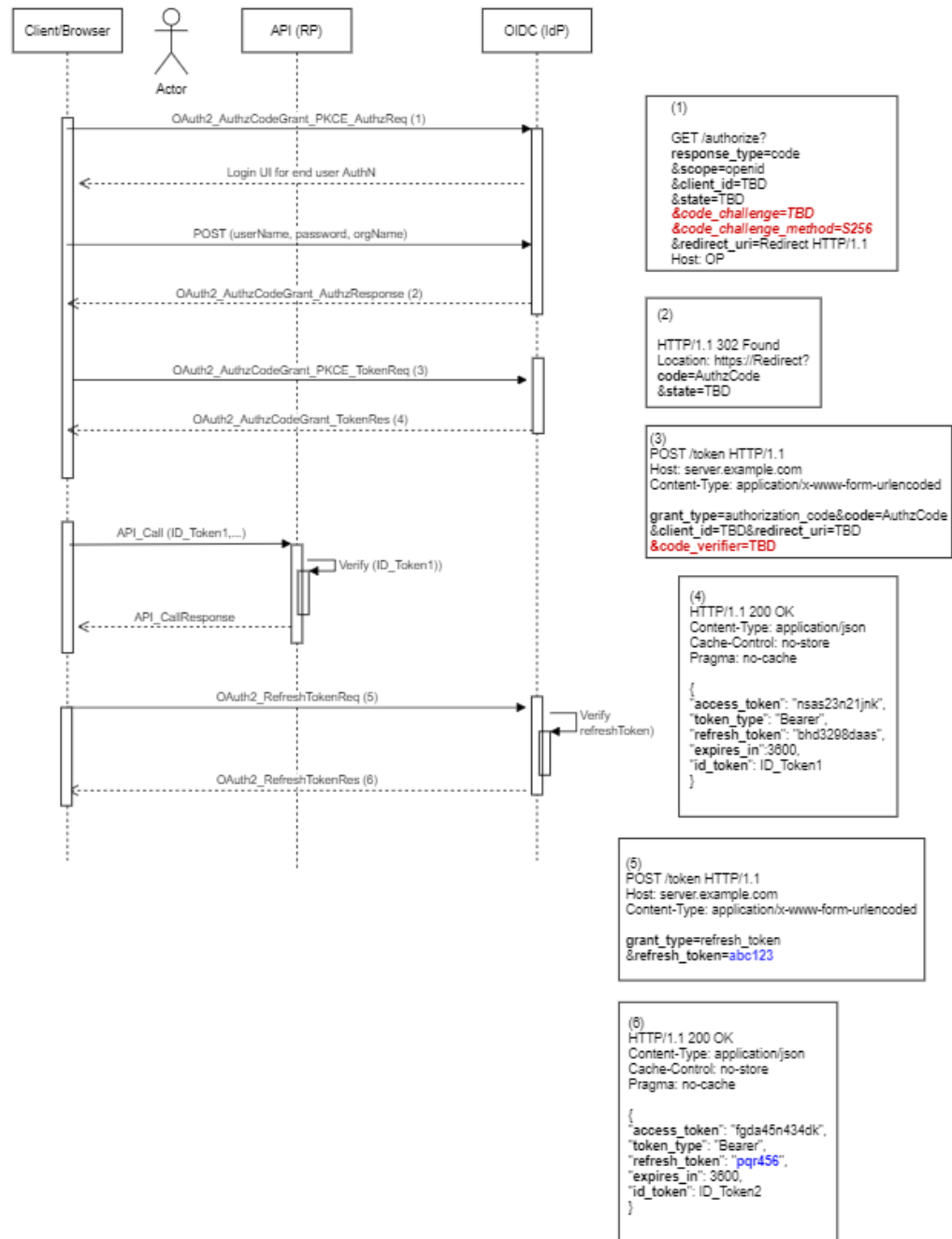
Use the following links to get more information:

- [Authentication](#) in *Business Intelligence API Guide* provides general information about authentication.
- [Adding API Accounts](#) in the *Reporting and Analytics User Guide* explains how to add an API account.
- [Symphony Transaction Services API](#) in the *Reporting and Analytics User Guide* explains how to configure an API account for STS Gen 2.

Authorization Code Flow with PKCE

Authorization code flow with proof key for code exchange (PKCE) is for public clients who cannot keep their client secret confidential. PKCE allows dynamic client secrets to be generated which allows the OIDC server to bind code exchange request to the original authorization code request.

A crypto random value is generated and sent to an authorized endpoint to get the authorization code. Then, to get the token, the originally generated random value is sent along with the code, so that OIDC server will validate if the same client requests the token for which the code was sent.



Authorize

Your application passes the following for obtaining a token:

- URL :`{{HOST}}/oidc-provider/v1/oauth2/authorize`
- Operation Type: GET
- Header:

- Parameters:
 - scope*** - openid.
 - response_type*** - OAuth 2.0 Response Type value that determines the authorization processing flow to be used, including what parameters are returned from the endpoints used when using the Authorization Code Flow ("code" is the only valid option allowed).
 - client_id*** - OAuth 2.0 Client Identifier valid at the Authorization Server.
 - redirect_uri*** - Redirection URI to which the response will be sent. This URI must exactly match one of the Redirection URI values for the client pre-registered at the OP (for machine clients, always use `apiaccount://callback`).
 - code_challenge*** - this is a 43–128-character long client generated string that is first hashed using SHA-256 and then Base 64 encoded.
 - code_challenge_method*** - must be set to "S256".

- Request:

```
{
  scope: "openid",
  response_type: "code",
  client_id: "MDAwMDAwMDAwMDAwMCAwMDAwLTAwMDAwMDAwMDAwMDAwLjkyMwU2YzBiLTUyMzYtNDkzMj04NGU4LTZlZmRhMDEzY TE5Ng==",
  redirect_uri: "apiaccount://callback",
  state: 999,
  code_challenge: "NWVlYzU0MTdkOTRjZmQ1ZTc3ODhlNmQ4NjVmNWQ2YjMzYmQyNjZlYTBlYzA2NzYyYzA5NmEwNzg4NTI3Yzk0Yw==",
  code_challenge_method: "S256"
}
```

Sign In

In this step, you submit the user's login credentials to the server. On successful login, an authorization code will be returned in the response which can then be exchanged for an `id_token` in the next step.

Your application will pass the following for obtaining an authorization code:

- URL : `{{HOST}}/oidc-provider/v1/oauth2/signin`
- Operation Type: POST
- Content-Type: `application/x-www-form-urlencoded`
- Header:
- Parameters:
 - username*** - user with machine Client API access privileges.
 - password***

- **orgname***
- Cookies (these will be processed through the application code, not the browser):
 - **client_id*** - OAuth 2.0 Client Identifier valid at the Authorization Server.
 - **redirect_uri*** - Redirection URI to which the response will be sent. This URI must exactly match one of the Redirection URI values for the client pre-registered at the OP.
 - **state** – optional.
 - **code_challenge*** - this is a 43-128 character-long string that is first hashed using SHA-256 and then Base 64 encoded.
 - **code_challenge_method*** - must be set to “S256”.
- Request:

```
{
  username: "abc" ,
  password: "password123" ,
  orgname: "test"
}
```

The response returns the authorization code:

- **Status 200**

```
{
  "nextOp": "redirect" ,
  "success": "true" ,
  "redirectUrl": "?code=<auth_code>"
}
```
- **Status 401**

```
{
  "status": 401,
  "message": "invalid.credentials",
  "code": "AUTHENTICATION_INVALID"
}
```

Get or Refresh a Token

The `id_token` provides a session (with scope and expiration), that your client application will use to make API calls. The process includes the following:

Your application will pass the following for obtaining a token:

- URL : `{{HOST}}/oidc-provider/v1/oauth2/token`
- Operation Type: POST
- Content-Type: `application/x-www-form-urlencoded`
 - Header:
 - Request Body:
 - `grant_type = authorization_code/refresh_token`
 - `scope = openid`
 - `client_id`
 - `code_verifier = plain text version (43-128 character-long string) of the "code_challenge" parameter in the "signin" API (required for grant_type=authorization_code)`
 - `code = auth_code` from "signin" or `refresh_token` from a previously obtained token

```
Request:
{
  grant_type:"authorization_code",
  client_id:"MDAwMDAwMDAtMDAwMC0wMDAwLTAwMDAtMDAwMDAwMDAwMDAwLjkyMwU2YzBiLTU2MzYtNDkzMj04NGU4LTZlZmRhMDEzYTE5Ng==",
  scope:"openid",
  code:"LTAwMDwLmJQZVhwtT3BFT1FrZnlyZ0JWcEFjcWFRQ2ZBVUhYeVlFaXhLYlFrRFRWaU5XaFI=",
  code_verifier: "-
  ._~QWERTYUIOPASDFGHJKLZXCVBNMqwertyuiopasdfghjklzxcvbnm-._~"
}
```

The response returns your `id_token` and refresh token

```
"id_token": "<token string>",
"token_type": "Bearer",
"expires_in": 86400,
"refresh_token": "<token string>"
```

In case of an error

```
{
```

```
"status": 401,  
"message": "AUTHENTICATION_CODE_NOT_FOUND",  
"code": "RECORD_NOT_FOUND"  
}
```

The JSON response:

- Contains the Access Token request output in JSON format. The response contains the attributes `id_token`, `refresh_token`, `token_type`, and `expires_in`.
- The `id_token` identifies your client access in Oracle and will be used for subsequent REST API calls. This token is encoded following the JSON Web Token (JWT) standard and is valid for 14 days.
- The `token_type` identifies the Access Token as a "Bearer" token type. In future requests, you will use this token type to identify your token in the Authorization header of your request.

To use this token in your request, set the "Authorization" key in the request header to "Bearer <id_token>"

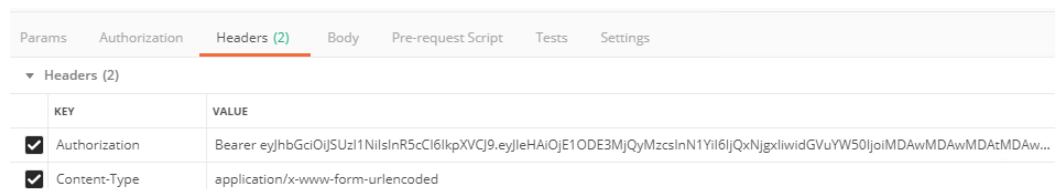
- The `expires_in` identifies the validity period of the Access Token.
- The `refresh_token` identifies the client access in Oracle and can be used to get a new `id_token` (using `grant_type=refresh_token` in the "token" API call) when the current one expires. The `refresh_token` is valid for 14 days.

The `id_token` is used as the Bearer Token in the authorization header of all API calls. Clients are responsible for refreshing the token before validity period expiration. Clients should begin attempting to acquire a new token for use against the API at the half-life of their current token. This ensures adequate time to acquire a new token before the current token expires.

If after a Reporting and Analytics upgrade an "AUTHENTICATION_INVALID" error is noticed, clients should go through the authentication process again and obtain a new token. It is suggested that a client implemented for 9.1 automate a reauthentication call using the existing refresh token, as the signing key will rotate on upgrade.

Using the `id_token` in API Calls

- URL : `https://{host}/api/v1/`
- Operation Type: GET
- Content-Type: `application/x-www-form-urlencoded`
- Header: Authorization = Bearer <id_token>



The screenshot shows an API client interface with tabs for Params, Authorization, Headers (2), Body, Pre-request Script, Tests, and Settings. The Headers (2) tab is selected, showing a table with two headers: KEY and VALUE. The first header is Authorization with a checked checkbox and a value starting with Bearer. The second header is Content-Type with a checked checkbox and a value of application/x-www-form-urlencoded.

| | KEY | VALUE |
|-------------------------------------|---------------|---|
| <input checked="" type="checkbox"/> | Authorization | Bearer eyJhbGciOiJSUzI1NiIsInR5cCI6IkpXVCJ9.eyJleHAiOiJlODE3MjQyMzcsInN1YiI6IjQxNjgxlwidiGVuYW50Ijo1MDAwMDAwMDAtMDAw... |
| <input checked="" type="checkbox"/> | Content-Type | application/x-www-form-urlencoded |

3

Organization API

The STSG2 Organization Service is used to interact with organizations, locations, and revenue centers within the organization. It also provides a search capability to support the ability to find locations in an organization or revenue centers within a single location based on geographic location.

Paths

The {basePath} for resources on the Organization API is:

`https://{host}/api/v1/`

The Organization API provides access to organizations, locations, and revenue center resources.

An organization has one or more locations, and each location has one more revenue centers. The identifier for an organization in the API is "orgShortName", the identifier for a location in the API is "locRef", and the identifier for a revenue center in the API is "rvcRef". The identifiers for locations are not unique across all organizations and similarly the identifiers for revenue centers are not unique across all locations within an organization. Since there is no uniqueness the path to access each of the resources must include its parent resource. For this reason, we end up with the following paths to GET each resource.

GET ../organizations

The API returns a list of organizations with which the integrator is privileged to interact.

GET {basePath}/organizations

Content-Type: application/json

Request

/organizations

/organizations?offset=1&limit=2

Query Parameters

| Name | Description | Type | Required | Example |
|--------|---|---------|----------|---------|
| offset | The offset from start of collection to the first item for this request. If offset is not included in the request then all objects returned. | Integer | No | 1 |
| limit | The maximum number of items to return in this request. | Integer | No | 2 |

200 Response

```
{
  "offset": 1,
  "limit": 2,
  "count": 2,
  "items": [
    { organization_3 (see Organization JSON Object) },
    { organization_4 (see Organization JSON Object) }
  ]
}
```

| Name | Description | Type | Always Present | Example |
|--------|--|---------|----------------|---------|
| offset | The offset of the start of the current page in the collection. | Integer | No | 1 |
| limit | The limit used for the current page. | Integer | No | 2 |

| Name | Description | Type | Always Present | Example |
|-------|---|---------|----------------|-------------------------|
| count | Total number of items in the collection for all pages. | Integer | No | 2 |
| items | Array of Organization JSON objects. If there are no organizations configured, this array will be empty. | Array | Yes | See Organization object |

Other Responses

| Error Response Code | Description | Type | Always Present | Example |
|---------------------|---|-------------|----------------|---------------------------------------|
| 400 | Response contains the Problem Details object. | JSON Object | No | { (Problem Details object) } |
| 401 | 401 Unauthorized. | | No | |
| 403 | 403 Forbidden. | | No | |
| 404 | 404 Requested resource not found. | | No | |

GET ../organizations/{orgShortName}

The API returns details about a specific organization.

GET {basePath}/organizations/{orgShortName}

Content-Type: application/json

Request

/organizations/tfoinc

Path Parameters

| Name | Description | Type | Required | Example |
|--------------|------------------------------|--------|----------|----------|
| orgShortName | The organization identifier. | String | Yes | "tfoinc" |

Headers

| Name | Description | Type | Required | Example |
|-------------------|---|--------|----------|-------------------------------|
| If-Modified-Since | Standard http caching header (http caching link). | String | No | Wed, 21 Oct 2015 07:28:00 GMT |
| If-None-Match | Standard http caching header (http caching link). | String | No | "8b573604" |

200 Response

```
{
  organization_1 (see Organization JSON Object)
}
```

Headers

| Name | Description | Type | Always Present | Example |
|---------------|---|--------|----------------|-------------------------------|
| Last-Modified | A timestamp indicating the date and time at which the origin server believes the selected representation was last modified. See RFC 7232 Section 2.2 (http caching link). | String | No | Wed, 21 Oct 2015 07:28:00 GMT |

| Name | Description | Type | Always Present | Example |
|------|---|--------|----------------|------------|
| Etag | The current entity-tag for the selected representation. See RFC 7232 Section 2.3 (http caching link). | String | No | "8b573604" |

Body

| Name | Description | Type | Always Present | Example |
|------|--|-------------|----------------|-------------------------|
| | Response contains the Organization Object. | JSON Object | Yes | See Organization object |

304 Response**Header**

| Name | Description | Type | Always Present | Example |
|---------------|---|--------|----------------|-------------------------------|
| Last-Modified | A timestamp indicating the date and time at which the origin server believes the selected representation was last modified. See RFC 7232 Section 2.2 (http caching link). | String | No | Wed, 21 Oct 2015 07:28:00 GMT |
| Etag | The current entity-tag for the selected representation. See RFC 7232 Section 2.3 (http caching link). | String | No | "8b573604" |

| Name | Description | Type | Always Present | Example |
|------|---------------|------|----------------|---------|
| | Not modified. | | | |

Error Response Codes

| Error Response Code | Description | Type | Always Present | Example |
|----------------------------|---|-------------|-----------------------|---------------------------------------|
| 400 | Response contains the Problem Details object. | JSON Object | No | { (Problem Details object) } |
| 401 | 401 Unauthorized. | | No | |
| 403 | 403 Forbidden. | | No | |
| 404 | 404 Requested resource not found. | | No | |

GET ../locations

The API returns a list of locations with which the integrator is privileged to interact within an organization.

GET {basePath}/organizations/{orgShortName}/locations

Content-Type: application/json

Request

/organizations/tfoinc/locations

/organizations/tfoinc/locations?offset=0&limit=2

Path Parameters

| Name | Description | Type | Required | Example |
|--------------|------------------------------|--------|----------|----------|
| orgShortName | The organization identifier. | String | Yes | "tfoinc" |

Query Parameters

| Name | Description | Type | Required | Example |
|--------|---|---------|----------|---------|
| offset | The offset from start of collection to the first item for this request. If offset is not included in the request then all objects returned. | Integer | No | 0 |
| limit | The maximum number of items to return in this request. | Integer | No | 2 |

200 Response

```
{
  "offset": 0,
  "limit": 2,
  "count": 2,
  "items": [
    { location_1 (see Location JSON Object) },
    { location_2 (see Location JSON Object) }
  ]
}
```

| Name | Description | Type | Always Present | Example |
|--------|--|---------|----------------|---------|
| offset | The offset of the start of the current page in the collection. | Integer | No | 0 |

| Name | Description | Type | Always Present | Example |
|-------|---|---------|----------------|---------------------|
| limit | The limit used for the current page. | Integer | No | 2 |
| count | Total number of items in the collection for all pages. | Integer | No | 2 |
| items | Array of Location JSON objects. If there are no locations configured, this array will be empty. | Array | Yes | See Location object |

Other Responses

| Error Response Code | Description | Type | Always Present | Example |
|---------------------|---|-------------|----------------|---------------------------------------|
| 400 | Response contains the Problem Details object. | JSON Object | No | { (Problem Details object) } |
| 401 | 401 Unauthorized. | | No | |
| 403 | 403 Forbidden. | | No | |
| 404 | 404 Requested resource not found. | | No | |

GET ../locations/{locRef}

The API returns details about a specific location in an organization.

GET {basePath}/organizations/{orgShortName}/locations/{locRef}

Content-Type: application/json

Request

/organizations/tfoinc/locations/fdmnh144

Path Parameters

| Name | Description | Type | Required | Example |
|--------------|------------------------------|--------|----------|------------|
| orgShortName | The organization identifier. | String | Yes | "tfoinc" |
| locRef | The location identifier. | String | Yes | "fdmnh144" |

Headers

| Name | Description | Type | Required | Example |
|-------------------|---|--------|----------|-------------------------------|
| If-Modified-Since | Standard http caching header (http caching link). | String | No | Wed, 21 Oct 2015 07:28:00 GMT |
| If-None-Match | Standard http caching header (http caching link). | String | No | "8b573604" |

200 Response

```
{
  location_1 (see Location JSON Object)
}
```

Headers

| Name | Description | Type | Always Present | Example |
|---------------|---|--------|----------------|-------------------------------|
| Last-Modified | A timestamp indicating the date and time at which the origin server believes the selected representation was last modified. See RFC 7232 Section 2.2 (http caching link). | String | No | Wed, 21 Oct 2015 07:28:00 GMT |

| Name | Description | Type | Always Present | Example |
|------|---|--------|----------------|------------|
| ETag | The current entity-tag for the selected representation. See RFC 7232 Section 2.3 (http caching link). | String | No | "8b573604" |

Body

| Name | Description | Type | Always Present | Example |
|------|--|-------------|----------------|---------------------|
| | Response contains the Location Object. | JSON Object | Yes | See Location object |

304 Response**Header**

| Name | Description | Type | Always Present | Example |
|---------------|---|--------|----------------|-------------------------------|
| Last-Modified | A timestamp indicating the date and time at which the origin server believes the selected representation was last modified. See RFC 7232 Section 2.2 (http caching link). | String | No | Wed, 21 Oct 2015 07:28:00 GMT |
| ETag | The current entity-tag for the selected representation. See RFC 7232 Section 2.3 (http caching link). | String | No | "8b573604" |

| Name | Description | Type | Always Present | Example |
|------|---------------|------|----------------|---------|
| | Not modified. | | | |

Error Response Codes

| Error Response Code | Description | Type | Always Present | Example |
|---------------------|---|-------------|----------------|---------------------------------------|
| 400 | Response contains the Problem Details object. | JSON Object | No | { (Problem Details object) } |
| 401 | 401 Unauthorized. | | No | |

| Error Response Code | Description | Type | Always Present | Example |
|---------------------|-----------------------------------|------|----------------|---------|
| 403 | 403 Forbidden. | | No | |
| 404 | 404 Requested resource not found. | | No | |

GET ../revenueCenters

The API returns a list of revenue centers the integrator is privileged to interact with in a location.

GET {basePath}/organizations/{orgShortName}/locations/{locRef}/revenueCenters

Content-Type: application/json

Request

/organizations/tfoinc/locations/fdmnh144/revenueCenters

/organizations/tfoinc/locations/fdmnh144/revenueCenters?offset=5&limit=2

Path Parameters

| Name | Description | Type | Required | Example |
|--------------|------------------------------|--------|----------|------------|
| orgShortName | The organization identifier. | String | Yes | "tfoinc" |
| locRef | The location identifier. | String | Yes | "fdmnh144" |

Query Parameters

| Name | Description | Type | Always Present | Example |
|--------|--|---------|----------------|---------|
| offset | The offset from start of collection to the first item for this request. If offset is not included in the request, response will start with the first object in the collection. | Integer | No | 5 |
| limit | The maximum number of items to return in this request. If limit is not included in the request then all objects returned. | Integer | No | 2 |

200 Response

```
{
  "offset": 5,
  "limit": 2,
  "count": 20,
```



```

    "items": [
      { revenueCenter_11 (see Revenue Center JSON Object) },
      { revenueCenter_12 (see Revenue Center JSON Object) }
    ]
  }

```

| Name | Description | Type | Always Present | Example |
|--------|---|---------|----------------|---------------------------|
| offset | The offset of the start of the current page in the collection. | Integer | No | 5 |
| limit | The limit used for the current page. | Integer | No | 2 |
| count | Total number of items in the collection for all pages. | Integer | No | 20 |
| items | Array of Revenue Center JSON objects. If there are no revenue centers configured, this array will be empty. | Array | Yes | See Revenue Center object |

Other Responses

| Error Response Code | Description | Type | Always Present | Example |
|---------------------|---|-------------|----------------|---------------------------------------|
| 400 | Response contains the Problem Details object. | JSON Object | No | { (Problem Details object) } |
| 401 | 401 Unauthorized. | | No | |
| 403 | 403 Forbidden. | | No | |
| 404 | 404 Requested resource not found. | | No | |

GET ../revenueCenters/{rvcRef}

The API returns details about a specific revenue center in a location.

GET {basePath}/organizations/{orgRef}/locations/{locRef}/revenueCenters/{rvcRef}

Content-Type: application/json

Request

/organizations/tfoinc/locations/fdmnh144/revenueCenters/42

Path Parameters

| Name | Description | Type | Required | Example |
|--------------|--------------------------------|---------|----------|------------|
| orgShortName | The organization identifier. | String | Yes | "tfoinc" |
| locRef | The location identifier. | String | Yes | "fdmnh144" |
| rvcRef | The revenue center identifier. | Integer | Yes | 42 |

Headers

| Name | Description | Type | Required | Example |
|-------------------|---|--------|----------|-------------------------------|
| If-Modified-Since | Standard http caching header (http caching link). | String | No | Wed, 21 Oct 2015 07:28:00 GMT |
| If-None-Match | Standard http caching header (http caching link). | String | No | "8b573604" |

200 Response

```
{
  (Revenue Center Object)
}
```

Headers

| Name | Description | Type | Always Present | Example |
|---------------|---|--------|----------------|-------------------------------|
| Last-Modified | A timestamp indicating the date and time at which the origin server believes the selected representation was last modified. See RFC 7232 Section 2.2 (http caching link). | String | No | Wed, 21 Oct 2015 07:28:00 GMT |

| Name | Description | Type | Always Present | Example |
|------|---|--------|----------------|------------|
| Etag | The current entity-tag for the selected representation. See RFC 7232 Section 2.3 (http caching link). | String | No | "8b573604" |

Body

| Name | Description | Type | Always Present | Example |
|------|--|-------------|----------------|----------------------------|
| | Response contains the Revenue Center Object. | JSON Object | Yes | See Revenue Center object. |

304 Response**Header**

| Name | Description | Type | Always Present | Example |
|---------------|---|--------|----------------|-------------------------------|
| Last-Modified | A timestamp indicating the date and time at which the origin server believes the selected representation was last modified. See RFC 7232 Section 2.2 (http caching link). | String | No | Wed, 21 Oct 2015 07:28:00 GMT |
| Etag | The current entity-tag for the selected representation. See RFC 7232 Section 2.3 (http caching link). | String | No | "8b573604" |

| Name | Description | Type | Always Present | Example |
|------|---------------|------|----------------|---------|
| | Not modified. | | | |

Error Response Codes

| Error Response Code | Description | Type | Always Present | Example |
|---------------------|---|-------------|----------------|---------------------------------------|
| 400 | Response contains the Problem Details object. | JSON Object | No | { (Problem Details object) } |
| 401 | 401 Unauthorized. | | No | |
| 403 | 403 Forbidden. | | No | |
| 404 | 404 Requested resource not found. | | No | |

GET ../search/locations

The API returns a list of locations within an organization based on distance from the given geo-coordinate.

Supported only for STSG2 cloud integrations.

GET

`https://{host/path}/api/v1/search/locations?orgShortName={orgShortName}&latitude={latitude}&longitude={longitude}`

Content-Type: application/json

Request

`/search/locations?orgShortName=tfoinc&latitude=40.763188&longitude=-73.914835&radius=50000&floor=1&`

`count=2`

Query Parameters

| Name | Description | Type | Required | Example |
|--------------|--|---------|----------|------------|
| orgShortName | The organization identifier. | String | Yes | "tfoinc" |
| latitude | Latitude of the location's geocoordinate set. | Number | Yes | 40.763188 |
| longitude | Longitude of the location's geocoordinate set. | Number | Yes | -73.914835 |
| radius | Radius in meters in which to search from the point defined by the geocoordinate set. | Integer | No | 5000 |
| count | Maximum number of locations to return. | Integer | No | 2 |

200 Response

```

{
  "items": [
    {
      "distance": 6788,
      "location": { (location_1 (see Location JSON
Object))}
    },
    {
      "distance": 7439,
      "location": { (location_2 (see Location JSON
Object))}
    }
  ]
}

```

| Name | Description | Type | Always Present | Example |
|----------|---|---------|----------------|---------------------|
| distance | The distance in meters between the location and the point defined in the request. | Integer | Yes | 6788 |
| location | The Location object. | Object | Yes | See Location object |

Other Responses

| Error Response Code | Description | Type | Always Present | Example |
|---------------------|---|-------------|----------------|---------------------------------------|
| 400 | Response contains the Problem Details object. | JSON Object | No | { (Problem Details object) } |
| 401 | 401 Unauthorized. | | No | |
| 403 | 403 Forbidden. | | No | |
| 404 | 404 Requested resource not found. | | No | |

GET ../search/revenueCenters

The API returns a list of revenue centers within a location based on distance from the point defined in the request and/or the floors provided in the "floor" query parameter.

Supported only for STSG2 cloud integrations.

GET `https://{host/path}/api/v1/search/revenueCenters`

`?orgShortName={orgShortName}&locRef={locRef}&latitude={latitude}&longitude={longitude}`

Content-Type: application/json

Request

`/search/revenueCenters?orgShortName=tfoinc&locRef=fdmnh144&latitude=40.763188&longitude=-73.914835&radius=5000&count=2`

`/search/revenueCenters?orgShortName=tfoinc&locRef=fdmnh144&floor=3`

Query Parameters

| Name | Description | Type | Required | Example |
|--------------|--|---------|----------|------------|
| orgshortname | The organization identifier. | String | Yes | "tfoinc" |
| locref | The location identifier. | String | Yes | "fdmnh144" |
| latitude | Latitude of the revenue center's geocoordinate set. | Number | No | 40.763188 |
| longitude | Longitude of the revenue center's geocoordinate set. | Number | No | -73.914835 |
| floor | Additional attribute to define the floor of the revenue center if needed. | String | No | "3" |
| radius | Radius in meters in which to search from the point defined by the geocoordinate set. | Integer | No | 5000 |
| count | Maximum number of revenue centers to return. | Integer | No | 2 |

200 Response

```
{
  "items": [
    {
      "distance": 6788,
      "revenueCenter": { (revenueCenter_1 (see Revenue
Center JSON Object))
    },
  ]
}
```

```

        "distance": 7439,
        "revenueCenter": { (revenueCenter_2 (see Revenue
Center JSON Object))
    }
    ]
}

```

| Name | Description | Type | Always Present | Example |
|---------------|---|---------|----------------|---------------------------|
| distance | The distance in meters between the revenue center and the point defined in the request. | Integer | Yes | 6788 |
| revenueCenter | The Revenue Center object. | Object | Yes | See Revenue Center object |

Other Responses

| Error Response Code | Description | Type | Always Present | Example |
|---------------------|---|-------------|----------------|---------------------------------------|
| 400 | Response contains the Problem Details object. | JSON Object | No | { (Problem Details object) } |
| 401 | 401 Unauthorized. | | No | |
| 403 | 403 Forbidden. | | No | |
| 404 | 404 Requested resource not found. | | No | |

Resources

Organizations

An organization is the overarching organizational entity for a specific customer in Oracle Food and Beverage Cloud Products. An organization includes one or more locations.

Content-Type: application/json

```
{
  "orgShortName": "tfoinc",
  "name": "The Food Organization Inc"
}
```

| Name | Description | Type | Always Present | Example |
|--------------|--------------------------------|--------|----------------|-----------------------------|
| orgShortName | The organization identifier. | String | Yes | "tfoinc" |
| name | Full name of the organization. | String | Yes | "The Food Organization Inc" |

Location

A location represents the places of business within a customer's organization. A location can have one or more revenue centers.

Content-Type: application/json

```
{
  "orgShortName": "tfoinc",
  "locRef": "fdmnh144",
  "name": "Food Manhattan",
  "consumerName": "East Village"
  "currency": "USD",
  "languages": [ "en-US", "fr-CA", "es-ES" ]
  "timeZone": { (TimeZone) },
  "phoneNumber": "555-555-5555"
  "address": { (Address) },
  "notes": "Use side entrance for takeout",
  "geoLocation": { (GeoLocation) },
  "posPlatform": { (PosPlatform) },
  "extensions": { (Extended Data) }
}
```

| Name | Description | Type | Always Present | Example |
|--------------|--|--------|----------------|---------------------------|
| orgShortName | The organization identifier. | String | Yes | "tfoinc" |
| locRef | The location identifier. | String | Yes | "fdmnh144" |
| name | This location's name. | String | Yes | "Food Manhattan" |
| consumerName | The consumer-facing name of the location. | String | No | "East Village" |
| currency | The primary currency of the location. Pricing displayed is based on this currency. Value is user-defined and comes from the currency form in Symphony Enterprise Management Console. | String | No | "USD" |
| languages | Array of language culture reference strings configured for the location. First value is default. | Array | No | ["en-US","fr-CA","es-ES"] |
| timeZone | Object containing the representations of the time zone configured for the location. | String | No | see Time Zone object |

| Name | Description | Type | Always Present | Example |
|-------------|---|-------------|-----------------------|---------------------------------|
| phoneNumber | The phone number for the location. | String | No | "555-555-5555" |
| address | Object containing the address details of the physical location. | Object | No | see Address object |
| notes | Additional comments/detail about the location. | String | No | "Use side entrance for takeout" |
| geoLocation | Object containing geographic coordinates of the location. | Object | No | See Geolocation object |
| posPlatform | Defines the point of sale (POS) platform operating at the location. | Object | Yes | See Pos Platform object |
| extensions | JSON Object of vendor-specific data. | Object | No | See Extended Data object |

Revenue Center

A revenue center represents the organizational entity that produces and sells items and services.

Content-Type: application/json

```
{
  "orgShortName": "tfoinc",
  "locRef": "fdmnh144",
  "rvcRef": 42,
  "name": "Food Manhattan RVC2",
  "consumerName": "Seasonal Market",
  "orderTypes": [ { (Order Type) } ],
  "address": { (Address) },
  "geoLocation": { (GeoLocation) },
  "tables": [ "1", "2", "3", "B1", "B2" ] ,
  "extensions": { (Extended Data) },
  "phoneNumber": "555-555-5555"
}
```

| Name | Description | Type | Always Present | Example |
|--------------|--|---------|----------------|------------------------|
| orgShortName | The organization identifier. | String | Yes | "tfoinc" |
| locRef | The location identifier. | String | Yes | "fdmnh144" |
| rvcRev | The revenue center's reference. | Integer | Yes | 42 |
| name | The revenue center's name. | String | Yes | "Food Manhattan RVC2" |
| consumerName | The consumer-facing name of the revenue center. | String | No | "Seasonal Market" |
| orderTypes | Array of order types that are available at this revenue center. If there are no orderTypes configured, this array will be empty. | Array | Yes | See Order Type object |
| address | Object containing the address details of the revenue center. | Object | No | See Address object |
| geoLocation | Object containing geographic coordinates of the revenue center. | Object | No | See GeoLocation object |

| Name | Description | Type | Always Present | Example |
|-------------|--|-------------|-----------------------|-------------------------------|
| tables | Array of restaurant table identifiers. | Array | No | ["1", "2", "3", "B1", "B2"] |
| extensions | JSON Object allowing the addition of Extension Data. | Object | No | See Extension Data object |
| phoneNumber | The phone number for the revenue center. | String | No | "555-555-5555" |

Definitions

Time Zone

Common representations of the time zone configured for the location.

```
{  
  "ianaName": "America/New_York",  
  "windowsName": "Eastern Standard Time",  
  "tzIndex": 23  
}
```

| Name | Description | Type | Always Present | Example |
|-------------|---|---------|----------------|-------------------------|
| ianaName | Common time zone representation used on Linux OS. | String | Yes | "America/New_York" |
| windowsName | Common time zone representation used on Windows OS. | String | Yes | "Eastern Standard Time" |
| tzIndex | Integer representation of the index column provided by Microsoft related to time zones. | Integer | Yes | 23 |

Address

Address and related details of a location or revenue center.

```
{  
  "addressLine1": "144 W 54th St",  
  "addressLine2": "Suite 11B",  
  "addressLine3": "",  
  "floor": "42A",  
  "locality": "New York",  
  "region": "NY",  
  "postalCode": "10019",  
  "country": "USA"  
  "notes": "Use West entrance for curbside orders"  
}
```

| Name | Description | Type | Always Present | Example |
|--------------|--|--------|----------------|---|
| addressLine1 | Street address, PO Box. | String | No | "144 W 54th St" |
| addressLine2 | Suite/apartment number, floor. | String | No | "Suite 11B" |
| addressLine3 | Additional address information. | String | No | |
| floor | Additional attribute to define the level or floor of the location if needed. | String | No | "42A" |
| locality | City/town. | String | No | "New York" |
| region | State/county/province. | String | No | "NY" |
| Postalcode | Postal code, US zip code. | String | No | "10019" |
| country | Name of country or country code. | String | No | "USA" |
| notes | Additional comments/details for the address. | String | No | "Use West entrance for curbside orders" |

Extension Data

An object used to add supplemental information about a location or revenue center in the organization service.

```
{  
  "<custom field>": { (Object) }  
}
```

| Name | Description | Type | Always Present | Example |
|----------------|---|--------|----------------|---------------------------|
| <custom field> | A JSON object containing a custom object required by the integrator which can be configured as a data extension from Enterprise Management Console. | Object | No | (properly formatted JSON) |

Geo Location

Object containing geographic coordinates.

```
{  
  "geolocation": { "latitude": 40.763188, "longitude": -  
73.914835 }  
}
```

| Name | Description | Type | Always Present | Example |
|-----------|--|--------|----------------|------------|
| latitude | Latitude of the location's geocoordinate set minimum: -90 maximum: 90 | Number | Yes | 40.763188 |
| longitude | Longitude of the location's geocoordinate set minimum: -180 maximum: 180 | Number | Yes | -73.914835 |

Order Type

An order type is a sales category, such as “Dine In”, “Take Out”, or “Delivery”. Each order type is represented by an integer value as well as a string description; however, only the integer value can be used with the checks service.

```
"orderTypes": [  
  {  
    "orderTypeRef": 2,  
    "name": "Take Out",  
    "serviceLevelTime": 5,  
    "suggestedTips": [ { (Suggested Tips) } ]  
  }  
]
```

| Name | Description | Type | Always Present | Example |
|------------------|---|---------|----------------|---------------------------------|
| orderTypeRef | Identifier for the order type minimum: 1 | Integer | Yes | 2 |
| name | Name of the order type. | String | No | "Take Out" |
| serviceLevelTime | The required time for the given order type to be prepared. | Integer | No | 5 |
| suggestedTips | Array of defined suggested tip types. | Array | No | See Suggested Tips object |

Suggested Tips

The Suggested Tip is representing a predefined percentage that can be used as a tip and may be marked as a default when used in a list.

```
[
  {
    "isDefault": true,
    "percentage": 18
  },
  {
    "isDefault": false,
    "percentage": 20
  },
  {
    "isDefault": false,
    "percentage": 25
  }
]
```

| Name | Description | Type | Always Present | Example |
|------------|--|---------|----------------|---------|
| isDefault | When true, indicates this tip is the default tip. Options: true or false. | Boolean | No | true |
| percentage | The value of the suggested tip in percent. minimum: 0 exclusiveMinimum: true | Integer | No | 18 |

Pos Platform

Object containing the source point of sale (POS) system's type and version.

```
{  
  "posPlatform": { "name": "Oracle.Simphony", "version": "2" }  
}
```

| Name | Description | Type | Always Present | Example |
|---------|---------------------------------------|--------|----------------|-------------------|
| name | The type of POS platform in use. | String | Yes | "Oracle.Simphony" |
| version | The version of the source POS system. | String | Yes | "2" |

Problem Details

Problem details is used as standard model for reporting details when HTTP error status code is returned. This definition is defined by [RFC7807](#).

```
{
  "type": "error:validation",
  "title": "Required value not specified.",
  "details": " The orgShortName value is required."
  "instance": "required_value_missing"
}
```

| Name | Description | Type | Always Present | Example |
|----------|--|--------|----------------|---------------------------------------|
| type | A URI reference that identifies the problem type. When this member is not present, its value is assumed to be "about:blank". | String | No | "error:validation" |
| title | A short, human-readable summary of the problem type. | String | No | "Required value not specified." |
| details | A human-readable explanation specific to this occurrence of the problem. | String | No | "The orgShortName value is required." |
| instance | A URI reference that identifies the specific occurrence of the problem. It may or may not yield further information if dereferenced. | String | No | "required_value_missing" |

4

Configuration API

The STSG2 Configuration Service is used to interact with POS system configuration including tables, menus, discounts, service charges, and tenders. Items are configured for each revenue center. Available revenue centers can be obtained from the Organization Service.

Paths

The {basePath} for resources on the Configuration API is:

`https://{host/path}/api/v1/`

The Configuration API provides access to the menu, discount, service charge, and tender resources configured for a revenue center.

Because each revenue center is uniquely identified by a combination of the {orgShortName}, {locRef}, and {rvcRef} then the path to each of the resources includes these values.

GET menus/summary

Get a summary of all available menus.

GET {basePath}/menus/summary

Content-Type: application/json

Request

/menus/summary?orgShortName=tfoinc&locRef=fdmnh144& rvcRef=42

Query Parameters

| Name | Description | Type | Required | Example |
|--------------|--------------------------------|---------|----------|------------|
| orgShortName | The organization identifier. | String | Yes | "tfoinc" |
| locRef | The location identifier. | String | Yes | "fdmnh144" |
| rvcRef | The revenue center identifier. | Integer | Yes | 42 |

200 Response

```
{
  "items": [
    { (Menu Summary) }
  ]
}
```

| Name | Description | Type | Always Present | Example |
|-------|---|-------|----------------|-------------------------|
| items | Array of Menu Summary objects. If there are no menus configured that meet the query parameters, this array will be empty. | Array | Yes | See Menu Summary object |

GET menus/{menuId}

A menu describes the set of items that can be ordered from a revenue center. The menu includes the menu items, prices, and related information necessary to order an item.

GET {basePath}/menus/{menuId}

Content-Type: application/json

Request

/menus/1233

Headers

| Name | Description | Type | Required | Example |
|-----------------------|---|--------|----------|-------------------------------|
| Simphony-OrgShortName | The organization identifier. | String | Yes | "tfoinc" |
| Simphony-LocRef | The location identifier. | String | Yes | "fdmnh144" |
| Simphony-RvcRef | The revenue center identifier. | String | Yes | 42 |
| If-Modified-Since | Standard http caching header (http caching link). | String | No | Wed, 21 Oct 2015 07:28:00 GMT |
| If-None-Match | Standard http caching header (http caching link). | String | No | "8b573604" |

Path Parameters

| Name | Description | Type | Required | Example |
|--------|--|--------|----------|---------|
| menuId | The identifier for an individual menu. | String | Yes | "1233" |

200 Response

```
{
  (Menu)
}
```

Headers

| Name | Description | Type | Always Present | Example |
|---------------|---|--------|----------------|-------------------------------|
| Last-Modified | A timestamp indicating the date and time at which the origin server believes the selected representation was last modified. See RFC 7232 Section 2.2 (http caching link). | String | No | Wed, 21 Oct 2015 07:28:00 GMT |
| ETag | The current entity-tag for the selected representation. See RFC 7232 Section 2.3 (http caching link). | String | No | "8b573604" |

Body

| Name | Description | Type | Always Present | Example |
|------|------------------------------------|-------------|----------------|-----------------|
| | Response contains the Menu object. | JSON Object | Yes | See Menu object |

304 Response**Headers**

| Name | Description | Type | Always Present | Example |
|---------------|---|--------|----------------|-------------------------------|
| Last-Modified | A timestamp indicating the date and time at which the origin server believes the selected representation was last modified. See RFC 7232 Section 2.2 (http caching link). | String | No | Wed, 21 Oct 2015 07:28:00 GMT |
| ETag | The current entity-tag for the selected representation. See RFC 7232 Section 2.3 (http caching link). | String | No | "8b573604" |

| Name | Description | Type | Always Present | Example |
|------|---------------|------|----------------|---------|
| | Not modified. | | | |

Other Responses

| Error Response Code | Description | Type | Always Present | Example |
|---------------------|---|-------------|----------------|------------------------------------|
| 400 | Response contains the Problem Details object. | JSON Object | No | { (Problem Details object) } |
| 404 | 404 Requested resource not found. | | No | |

GET discounts/collection

The discount collection is a list of discounts that can be used when interacting with the checks endpoint. The API returns a collection of discounts that can be used at the specified revenue center.

GET {basePath}/discounts/collection

Content-Type: application/json

Request

/discounts/collection?orgShortName=tfoinc&locRef=fdmnh144&rcRef=42

Query Parameters

| Name | Description | Type | Required | Example |
|--------------|--------------------------------|---------|----------|------------|
| orgShortName | The organization identifier. | String | Yes | "tfoinc" |
| locRef | The location identifier. | String | Yes | "fdmnh144" |
| rcRef | The revenue center identifier. | Integer | Yes | 42 |

Headers

| Name | Description | Type | Required | Example |
|-------------------|---|--------|----------|-------------------------------|
| If-Modified-Since | Standard http caching header (http caching link). | String | No | Wed, 21 Oct 2015 07:28:00 GMT |
| If-None-Match | Standard http caching header (http caching link). | String | No | "8b573604" |

200 Response

```
{
  "orgShortName": "tfoinc",
  "locRef": "fdmnh144",
  "rvcRef": 42,
  "items": [ { (Discount Object) } ]
}
```

Headers

| Name | Description | Type | Always Present | Example |
|---------------|---|--------|----------------|-------------------------------|
| Last-Modified | A timestamp indicating the date and time at which the origin server believes the selected representation was last modified. See RFC 7232 Section 2.2 (http caching link). | String | No | Wed, 21 Oct 2015 07:28:00 GMT |
| ETag | The current entity-tag for the selected representation. See RFC 7232 Section 2.3 (http caching link). | String | No | "8b573604" |

Body

| Name | Description | Type | Always Present | Example |
|--------------|--------------------------------|---------|----------------|---------------------|
| orgShortName | The organization identifier. | String | Yes | "tfoinc" |
| locRef | The location identifier. | String | Yes | "fdmnh144" |
| rvcRef | The revenue center identifier. | Integer | Yes | 42 |
| items | Array of Discounts. | Array | Yes | See Discount object |

304 Response

Headers

| Name | Description | Type | Always Present | Example |
|---------------|---|--------|----------------|-------------------------------|
| Last-Modified | A timestamp indicating the date and time at which the origin server believes the selected representation was last modified. See RFC 7232 Section 2.2 (http caching link). | String | No | Wed, 21 Oct 2015 07:28:00 GMT |
| ETag | The current entity-tag for the selected representation. See RFC 7232 Section 2.3 (http caching link). | String | No | "8b573604" |

| Name | Description | Type | Always Present | Example |
|------|---------------|------|----------------|---------|
| | Not modified. | | | |

Other Responses

| Error Response Code | Description | Type | Always Present | Example |
|---------------------|---|-------------|----------------|---------------------------------------|
| 400 | Response contains the Problem Details object. | JSON Object | No | { (Problem Details object) } |

GET serviceCharges/collection

The service charge collection is a list of service charges that can be used when interacting with the checks endpoint. The API returns a collection of service charges that can be used at the specified revenue center.

GET {basePath}/serviceCharges/collection

Content-Type: application/json

Request

/serviceCharges/collection?orgShortName=tfoinc&locRef=fdmnh144&rvcref=42

Query Parameters

| Name | Description | Type | Required | Example |
|--------------|--------------------------------|---------|----------|------------|
| orgShortName | The organization identifier. | String | Yes | "tfoinc" |
| locRef | The location identifier. | String | Yes | "fdmnh144" |
| rvcref | The revenue center identifier. | Integer | Yes | 42 |

Headers

| Name | Description | Type | Required | Example |
|-------------------|---|--------|----------|-------------------------------|
| If-Modified-Since | Standard http caching header (http caching link). | String | No | Wed, 21 Oct 2015 07:28:00 GMT |
| If-None-Match | Standard http caching header (http caching link). | String | No | "8b573604" |

200 Response

```
{
  "orgShortName": "tfoinc",
  "locRef": "fdmnh144",
  "rvcref": 42,
  "items": [ { (Service Charge Object) } ]
}
```

Headers

| Name | Description | Type | Always Present | Example |
|---------------|---|--------|----------------|-------------------------------|
| Last-Modified | A timestamp indicating the date and time at which the origin server believes the selected representation was last modified. See RFC 7232 Section 2.2 (http caching link). | String | No | Wed, 21 Oct 2015 07:28:00 GMT |
| ETag | The current entity-tag for the selected representation. See RFC 7232 Section 2.3 (http caching link). | String | No | "8b573604" |

Body

| Name | Description | Type | Always Present | Example |
|--------------|--------------------------------|---------|----------------|---------------------------|
| orgShortName | The organization identifier. | String | Yes | "tfoinc" |
| locRef | The location identifier. | String | Yes | "fdmnh144" |
| rvcRef | The revenue center identifier. | Integer | Yes | 42 |
| items | Array of Service Charges. | Array | Yes | See Service Charge object |

304 Response**Header**

| Name | Description | Type | Always Present | Example |
|---------------|---|--------|----------------|-------------------------------|
| Last-Modified | A timestamp indicating the date and time at which the origin server believes the selected representation was last modified. See RFC 7232 Section 2.2 (http caching link). | String | No | Wed, 21 Oct 2015 07:28:00 GMT |
| ETag | The current entity-tag for the selected representation. See RFC 7232 Section 2.3 (http caching link). | String | No | "8b573604" |

| Name | Description | Type | Always Present | Example |
|---------------|-------------|------|----------------|---------|
| Not modified. | | | | |

Other Responses

| Error Response Code | Description | Type | Always Present | Example |
|---------------------|---|-------------|----------------|---------------------------------------|
| 400 | Response contains the Problem Details object. | JSON Object | No | { (Problem Details object) } |
| 404 | 404 Requested resource not found. | | No | |

GET tenders/collection

The tender collection is a list of tenders that can be used for payment when interacting with the checks endpoint. The API returns a collection of tenders for the specified revenue center.

GET {basePath}/tenders/collection

Content-Type: application/json

Request

/tenders/collection?orgShortName=tfoinc&locRef=fdmnh144&rvcref=42

Query Parameters

| Name | Description | Type | Required | Example |
|--------------|--------------------------------|---------|----------|------------|
| orgShortName | The organization identifier. | String | Yes | "tfoinc" |
| locRef | The location identifier. | String | Yes | "fdmnh144" |
| rvcref | The revenue center identifier. | Integer | Yes | 42 |

Headers

| Name | Description | Type | Required | Example |
|-------------------|---|--------|----------|-------------------------------|
| If-Modified-Since | Standard http caching header (http caching link). | String | No | Wed, 21 Oct 2015 07:28:00 GMT |
| If-None-Match | Standard http caching header (http caching link). | String | No | "8b573604" |

200 Response

```
{
  "orgShortName": "tfoinc",
  "locRef": "fdmnh144",
  "rvcref": 42,
  "items": [ { (Tender Object) } ]
}
```

Headers

| Name | Description | Type | Always Present | Example |
|---------------|---|--------|----------------|-------------------------------|
| Last-Modified | A timestamp indicating the date and time at which the origin server believes the selected representation was last modified. See RFC 7232 Section 2.2 (http caching link). | String | No | Wed, 21 Oct 2015 07:28:00 GMT |
| ETag | The current entity-tag for the selected representation. See RFC 7232 Section 2.3 (http caching link). | String | No | "8b573604" |

Body

| Name | Description | Type | Always Present | Example |
|--------------|--------------------------------|---------|----------------|------------------|
| orgShortName | The organization identifier. | String | Yes | "tfoinc" |
| locRef | The location identifier. | String | Yes | "fdmnh144" |
| rvcRef | The revenue center identifier. | Integer | Yes | 42 |
| items | Array of Tenders. | Array | Yes | See Tener object |

304 Response**Header**

| Name | Description | Type | Always Present | Example |
|---------------|---|--------|----------------|-------------------------------|
| Last-Modified | A timestamp indicating the date and time at which the origin server believes the selected representation was last modified. See RFC 7232 Section 2.2 (http caching link). | String | No | Wed, 21 Oct 2015 07:28:00 GMT |
| ETag | The current entity-tag for the selected representation. See RFC 7232 Section 2.3 (http caching link). | String | No | "8b573604" |

| Name | Description | Type | Always Present | Example |
|---------------|-------------|------|----------------|---------|
| Not modified. | | | | |

Other Responses

| Error Response Code | Description | Type | Always Present | Example |
|---------------------|---|-------------|----------------|---------------------------------------|
| 400 | Response contains the Problem Details object. | JSON Object | No | { (Problem Details object) } |

GET taxes

Get tax configuration for a revenue center. This request provides the tax class that is referenced by menu items and the tax rates and tax types referenced by the tax classes. The tax classes will indicate which tax rates are active when that tax class is used by an item.

GET {basePath}/taxes

Content-Type: application/json

Request

/taxes?orgShortName=tfoinc&locRef=fdmnh144&rvcref=42

Query Parameters

| Name | Description | Type | Required | Example |
|--------------|-------------------------------|---------|----------|------------|
| orgShortName | This organization identifier | string | Y | "tfoinc" |
| locRef | The location identifier | string | Y | "fdmnh144" |
| rvcref | The revenue center identifier | integer | Y | 42 |

Headers

| Name | Description | Type | Required | Example |
|-------------------|---|--------|----------|-------------------------------|
| If-Modified-Since | Standard http caching header (http caching link). | String | No | Wed, 21 Oct 2015 07:28:00 GMT |

| Name | Description | Type | Required | Example |
|---------------|---|--------|----------|------------|
| If-None-Match | Standard http caching header (http caching link). | String | No | "8b573604" |

200 Response

```
{
  "orgShortName": "tfoinc",
  "locRef": "fdmnh144",
  "rvcRef": 42,
  "taxClasses": [ { (Tax Class Object) } ],
  "taxRates": [ { (Tax Rate Object) } ]
}
```

Headers

| Name | Description | Type | Always Present | Example |
|---------------|---|--------|----------------|-------------------------------|
| Last-Modified | A timestamp indicating the date and time at which the origin server believes the selected representation was last modified. See RFC 7232 Section 2.2 (http caching link). | String | No | Wed, 21 Oct 2015 07:28:00 GMT |
| ETag | The current entity-tag for the selected representation. See RFC 7232 Section 2.3 (http caching link). | String | No | "8b573604" |

Body

| Name | Description | Type | Always Present | Example |
|--------------|--|---------|----------------|----------------------|
| orgShortName | The organization identifier. | String | Yes | "tfoinc" |
| locRef | The location identifier. | String | Yes | "fdmnh144" |
| rvcRef | The revenue center identifier. | Integer | Yes | 42 |
| taxClasses | Array of tax classes referenced by menu items in the requested revenue center. | array | Y | see Tax Class Object |
| taxRates | Array of tax rates referenced by menu items in the requested revenue center. | array | Y | see Tax Rate Object |

304 Response

Headers

| Name | Description | Type | Always Present | Example |
|---------------|---|--------|----------------|-------------------------------|
| Last-Modified | A timestamp indicating the date and time at which the origin server believes the selected representation was last modified. See RFC 7232 Section 2.2 (http caching link). | String | No | Wed, 21 Oct 2015 07:28:00 GMT |
| ETag | The current entity-tag for the selected representation. See RFC 7232 Section 2.3 (http caching link). | String | No | "8b573604" |

Other Responses

| Error Response Code | Description | Type | Always Present | Example |
|---------------------|---|-------------|----------------|---------------------------------------|
| 400 | Response contains the Problem Details object. | JSON Object | No | { (Problem Details object) } |

GET items/unavailable

Get a menu item availability status for menu items.

GET {basePath}/menus/items/unavailable

Content-Type: application/json

Request

items/unavailable?orgShortName=foinc&locRef= fdmnh144& rvcRef=42

Query Parameters

| Name | Description | Type | Required | Example |
|--------------|------------------------------|--------|----------|------------|
| orgShortName | The organization identifier. | String | Yes | "foinc" |
| locRef | The location identifier. | String | Yes | "fdmnh144" |

| Name | Description | Type | Required | Example |
|--------|--------------------------------|---------|----------|---------|
| rvcRef | The revenue center identifier. | Integer | Yes | 42 |

Headers

| Name | Description | Type | Required | Example |
|---------------|---|--------|----------|------------|
| If-None-Match | Standard http caching header (http caching link). | String | No | "8b573604" |

200 Response

```
{
  "orgShortName": "tfoinc",
  "locRef": "fdmnh144",
  "rvcRef": 42,
  "items": [ { (Menu Item Availability) } ]
}
```

| Name | Description | Type | Always Present | Example |
|--------------|--|---------|----------------|-----------------------------------|
| orgShortName | The organization identifier. | String | Yes | "tfoinc" |
| locRef | The location identifier. | String | Yes | "fdmnh144" |
| rvcRef | The revenue center identifier. | Integer | Yes | 42 |
| items | Array of Menu Item Availability Items. | Array | Yes | See Menu Item Availability object |

Headers

| Name | Description | Type | Always Present | Example |
|------|---|--------|----------------|------------|
| ETag | The current entity-tag for the selected representation. See RFC 7232 Section 2.3 (http caching link). | String | No | "8b573604" |

304 Response

Headers

| Name | Description | Type | Always Present | Example |
|------|---|--------|----------------|------------|
| ETag | The current entity-tag for the selected representation. See RFC 7232 Section 2.3 (http caching link). | String | No | "8b573604" |

| Name | Description | Type | Always Present | Example |
|------|---------------|------|----------------|---------|
| | Not modified. | | | |

Other Responses

| Error Response Code | Description | Type | Always Present | Example |
|---------------------|---|-------------|----------------|---------------------------------------|
| 400 | Response contains the Problem Details object. | JSON Object | No | { (Problem Details object) } |

Resources

Menu Summary

Summary details of a menu without its related items.

application/json

```
{
  "menuId": "tfoinc:fdmnh144:42",
  "name": "fdmnh1441233",
  "description": "The bar menu",
  "orgShortName": "tfoinc",
  "locRef": "fdmnh144",
  "rvcRef": 42
}
```

| Name | Description | Type | Always Present | Example |
|--------------|--|---------|----------------|----------------------|
| menuId | System generated unique reference for this menu. | String | Yes | "tfoinc:fdmnh144:42" |
| name | Generated name for the specific menu. | String | No | "fdmnh1441233" |
| description | Description of the menu. | String | No | "The bar menu" |
| orgShortName | The organization identifier. | String | Yes | "tfoinc" |
| locRef | The location identifier. | String | Yes | "fdmnh144" |
| rvcRef | The revenue center identifier. | Integer | Yes | 42 |

Menu

The set of items that can be ordered. In addition to the menu's summary details the menu includes the menu items, prices, and related information necessary to order those items.

application/json

```
{
  "orgShortName": "tfoinc",
  "locRef": "fdmnh144",
  "rvcRef": 42,
  "menuId": "tfoinc:fdmnh144:42",
  "name": "fdmnh1441233",
  "description": "The lunch menu",
  "menuItems": [ { (Menu Item) } ],
  "comboMeals": [ { (Combo Meal) } ],
  "condimentItems": [ { (Condiment Item) } ],
  "condimentGroups": [ { (Condiment Group) } ],
  "familyGroups": [ { (Family Group Item) } ],
  "allergens": [ { (Allergen) } ]
}
```

| Name | Description | Type | Always Present | Example |
|----------------|--|---------|----------------|---------------------------|
| orgShortName | The organization identifier. | String | Yes | "tfoinc" |
| locRef | The location identifier. | String | Yes | "fdmnh144" |
| rvcRef | The revenue center identifier. | Integer | Yes | 42 |
| menuId | System generated unique reference for this menu. | String | Yes | "tfoinc:fdmnh144:42" |
| name | Generated name for the specific menu. | String | No | "fdmnh1441233" |
| description | Description of the menu. | String | No | "The lunch menu" |
| menuItems | Array of Menu Items. | Array | Yes | see Menu Item object |
| comboMeals | Array of Combo Meals. | Array | Yes | see Combo Meal object |
| condimentItems | Array of Condiment Items. | Array | Yes | see Condiment Item object |

| Name | Description | Type | Always Present | Example |
|-----------------|------------------------------|-------------|-----------------------|------------------------------|
| condimentGroups | Array of Condiment Groups. | Array | Yes | see Condiment Group object |
| familyGroups | Array of Family Group Items. | Array | Yes | see Family Group Item object |
| allergens | Array of Allergen. | Array | Yes | see Allergens object |

Discount

Definition of a discount that can be applied to a transaction.

application/json

```
{
  "discountId": 726123,
  "name": "RST WK PRMO",
  "consumerName": { (Translated String) },
  "consumerDescription": { (Translated String) },
  "type": "percentage",
  "value": 5.00,
  "extensions": { (Extended Data) }
}
```

| Name | Description | Type | Always Present | Example |
|---------------------|--|---------|----------------|------------------------------|
| discountId | The discount identifier. | Integer | Yes | 726123 |
| aame | The name of the discount defined in the POS. | Object | Yes | "RST WK PRMO" |
| consumerName | Name defined for use in a consumer interface. | Object | No | See Translated String object |
| consumerDescription | Description defined for consumer interface. | Object | No | See Translated String object |
| type | The type of the discount ("amount" or "percentage"). | String | Yes | "percentage" |
| value | The amount or percentage of the preset discount. If value is not present, then it is an open discount. | Number | No | 5.00 |
| extensions | An object containing additional attributes for item. | Object | No | See Extension Data object |

Service Charge

application/json

```
{
  "serviceChargeId": 262912,
  "name": "Dlvry Chrg",
  "consumerName": { (Translated String) },
  "consumerDescription": { (Translated String) },
  "type": "amount",
  "value": 7.00,
  "extensions": { (Extension Data) },
}
```

| Name | Description | Type | Always Present | Example |
|---------------------|--|---------|----------------|------------------------------|
| serviceChargeId | The object number reference of the service charge. | Integer | Yes | 262912 |
| name | The name of the service charge defined in the POS. | String | Yes | "Dlvry Chrg" |
| consumerName | Name defined for use in a consumer interface. | Object | No | See Translated String object |
| consumerDescription | Description defined for consumer interface. | Object | No | See Translated String object |
| type | The type of the service charge ("amount" or "percentage"). | String | Yes | "amount" |
| value | The amount or percentage of the preset service charge. If value is not present, then it is an open service charge. | Number | No | 7.00 |
| extensions | An object containing additional attributes for the item. | Object | No | See Extension Data object |

Tender

application/json

```
{
  "tenderId": 262912,
  "name": "Svc Ttl"
  "consumerName": { (Translated String) },
  "consumerDescription": { (Translated String) },
  "type": "service total",
  "extensions": { (Extension Data) }
}
```

| Name | Description | Type | Always Present | Example |
|---------------------|--|---------|----------------|------------------------------|
| tenderId | The tender's object number reference. | Integer | Yes | 262912 |
| name | The name of the tender defined in the POS. | String | Yes | "Svc Ttl" |
| consumerName | Name defined for use in a consumer interface. | Object | No | See Translated String object |
| consumerDescription | Description defined for consumer interface. | Object | No | See Translated String object |
| type | The type of the tender ("service total" or "payment"). | String | Yes | "service total" |
| extensions | An object containing additional attributes for the item. | Object | No | See Extension Data object |

Tax Class

application/json

```
{
  "taxClassId": 72,
  "activeTaxRateRefs": [
    1,
    5,
    7
  ]
}
```

| Name | Description | Type | Always Present | Example |
|-------------------|---|---------|----------------|-------------|
| taxClassId | The tax class identifier | integer | Y | 72 |
| activeTaxRateRefs | Array of references to active tax rate items for this tax class | array | N | [1, 5, 7] |

Tax Rate

application/json

```
{
  "taxRateId": 47,
  "percentage": 4.0,
  "taxType": "inclusive",
  "name": "{ (Translated String) }"
}
```

| Name | Description | Type | Always Present | Example |
|------------|---|---------|----------------|------------------------------|
| taxRateId | The tax class identifier | integer | Y | 47 |
| percentage | The percentage of the tax rate | number | Y | 4.0 |
| taxType | The type of the tax rate | string | Y | "Add On" |
| name | The name of the tax rate defined in the point of sale | Object | Y | See Translated String object |

Menu Item Availability

application/json

```
{  
  "menuItemId": "822815",  
  "definitions": [ { (Menu Item Availability Data) } ]  
}
```

| Name | Description | Type | Always Present | Example |
|-------------|---|---------|----------------|--|
| menuItemId | The menu item's object number reference. | Integer | Yes | 822815 |
| definitions | Array containing one or more definitions for the menu item. | Array | Yes | See Menu Item Availability Data object |

Definitions

Menu Item

```
{
  "menuItemId": "822815",
  "name": { (Translated String) },
  "familyGroupRef": 1,
  "definitions" : [ { (Menu Item Definition) } ],
  "dietaryInformation": ["vegan", "low sodium"],
  "tags": ["online", "seasonal"],
  "tagGroups": [ { (Tag Groups) } ]
}
```

| Name | Description | Type | Always Present | Example |
|--------------------|---|---------|----------------|---------------------------------|
| menuItemId | The menu item's object number reference. | Integer | Yes | 822815 |
| name | The name of the menu item defined in the POS. | Object | Yes | See Translated String object |
| familyGroupRef | The reference to the family group item in the menu's family group collection. | Integer | Yes | 1 |
| definitions | Array containing one or more definitions for the menu item. | Array | Yes | See Menu Item Definition object |
| dietaryInformation | Array of Dietary values (strings). | Array | No | "vegan" |
| tags | Array of tag values (strings). | Array | No | "online" |
| tagGroups | Array of tagGroups containing one or more tags objects (strings). | Array | No | See Tag Groups object |

Menu Item Definition

Menu item definitions define additional details about a menu item. Each menu item can have up to 64 menu item definitions.

```
{
  "definitionSequence": 1,
  "name": { (Translated String) },
  "name2": { (Translated String) },
  "consumerName": { (Translated String) },
  "consumerDescription": { (Translated String) },
  "images": [ { (Image Link) } ],
  "tags": ["online", "seasonal"],
  "allergens": [ { (Allergens) } ],
  "nutritionalData": [ { (Nutritional Data) } ],
  "options": ["containsAlcohol"],
  "consumerAdvisoryText": "Consuming raw or undercooked meats,
  poultry, seafood, shellfish, or eggs may increase your risk of
  food borne illness",
  "prices": [ (Menu Item Price) ],
  "slus": [ { (Menu Item SLU) } ],
  "taxClassRef": 72,
  "defaultCondiments": [ { (Default Condiment) } ],
  "condimentGroupRules": [ { (Condiment Group Rule) } ],
  "extensions": { (Extension Data) }
}
```

| Name | Description | Type | Always Present | Example |
|--------------------|---|---------|----------------|------------------------------|
| definitionSequence | The sequence number of the definition. | Integer | Yes | 1 |
| name | The name of the item. | Object | Yes | See Translated String object |
| name2 | The second name of the item. | Object | Yes | See Translated String Object |
| consumerName | Name defined for use in a consumer interface. | Object | No | See Translated String object |

| Name | Description | Type | Always Present | Example |
|----------------------|--|---------|----------------|---|
| consumerDescription | Description defined for consumer interface. | Object | No | See Translated String object |
| images | Array of Image objects. | Array | No | See Image Link object |
| tags | Array of tag values (strings). | Array | No | "seasonal" |
| allergens | Array of Allergen objects that apply to this menu item. | Array | No | See Allergen object |
| nutritionalData | Array of nutritional data objects for the menu item. It is assumed that nutritional data are defined where the serving size is one of the menu item. | Array | No | See Nutritional Data object |
| options | Array of options. One or more of the following values are allowed: "containsAlcohol " | Array | No | ["containsAlcohol"] |
| consumerAdvisoryText | Consumer advisory description related to this item. | String | No | "Consuming raw or undercooked meats, poultry, seafood, shellfish, or eggs may increase your risk of food borne illness" |
| prices | Array of zero or more prices for the item. | Array | No | See Menu Item Price object |
| slus | Array of screen look up (SLU) objects representing the SLUs configured on the Menu Item Definition. | Array | No | See Menu Item SLU object |
| taxClassRef | The tax class reference associated with the definition | integer | N | 72 |
| defaultCondiments | The default condiments for the item. | Array | Yes | See Default Condiment object. |

| Name | Description | Type | Always Present | Example |
|---------------------|---|-------------|-----------------------|---------------------------------|
| condimentGroupRules | The condiment rules. | Array | No | See Condiment Group Rule object |
| extensions | An object containing additional attributes. | Object | No | See Extension Data object |

Menu Item Price

Menu item price is the amount charged for the sale of a menu item. Menu item prices are configured per menu item definition. Each definition can have up to eight prices.

```
{  
  "priceSequence": 1,  
  "price": 1.12,  
  "name": "Add"  
}
```

| Name | Description | Type | Always Present | Example |
|---------------|--|---------|----------------|---------|
| priceSequence | The price sequence number. | Integer | Yes | 1 |
| price | The price that can be used when adding the menu item to a check. | Number | Yes | 1.12 |
| name | Describes some facet of the price; an example might be a size. Price name is populated with the name of the menu level the priceSequence is associated with. If the price is available on "All Levels", the name attribute will not be included for that record in the response. Similarly, if the menu level name is blank, the name attribute won't be included. | String | No | "Add" |

Menu Item Availability Data

```
{
  "definitionSequence": 1
}
```

| Name | Description | Type | Always Present | Example |
|--------------------|--|---------|----------------|---------|
| definitionSequence | The sequence number of the definition. | Integer | Yes | 1 |

Family Group Item

```
{
  "familyGroupItemID": 1,
  "name": { (Translated String) },
  "consumerName": { (Translated String) },
  "consumerDescription": { (Translated String) },
  "images": [ { (Image Link) } ]
}
```

| Name | Description | Type | Always Present | Example |
|---------------------|--|---------|----------------|------------------------------|
| familyGroupItemID | The family group item's object number reference. | Integer | Yes | 1 |
| name | The name of the item. | Object | Yes | See Translated String object |
| consumerName | Name defined for use in a consumer interface. | Object | No | See Translated String object |
| consumerDescription | Description defined for consumer interface. | Object | No | See Translated String object |
| images | Array of Image objects. | Array | No | See Image Link object |

Combo Meal Item

```
{  
  "comboMealId": 4443,  
  "name": "Sandwich & Drink",  
  "menuItemRef": 42,  
  "comboGroups": [ { (Combo Group) } ]  
}
```

| Name | Description | Type | Always Present | Example |
|-------------|--|---------|----------------|------------------------|
| comboMealId | The combo meal identifier. | Integer | Yes | 4443 |
| name | Name of the combo meal item. | String | Yes | "Sandwich & Drink" |
| menuItemRef | A reference to the main item used when ordering a combo meal. | Integer | Yes | 42 |
| comboGroups | Array of Combo Group items from which user will make selections to complete definition of the combo. | Array | Yes | See Combo Group object |

Combo Group Item

```
{
  "comboGroupId": 4443,
  "name": "Hot Side",
  "count": 1,
  "isMainGroup": true,
  "prices": [ (Combo Menu Item Price) ],
  "menuItems": [ { (Combo Menu Item) } ]
}
```

| Name | Description | Type | Always Present | Example |
|--------------|---|---------|----------------|----------------------------------|
| comboGroupId | The combo meal identifier. | Integer | Yes | 4443 |
| name | The name of the combo group. | String | Yes | "Hot Side" |
| count | The number of items to select from the group when adding the combo meal to a check. | Integer | No | 2 |
| isMainGroup | When true, indicates this group is the "main group". Options: true or false. | Boolean | No | true |
| prices | An array of zero or more prices for the combo menu item. | Array | No | See Combo Menu Item Price object |
| menuItems | The collection of menu items that are selected when picking items from this combo group. Array of Combo Menu Items. | Array | Yes | See Combo Menu Item object |

Combo Menu Item

```
{
  "menuItemRef": 443,
  "count": 2,
  "prices": [ { (Combo Menu Item Price) } ]
}
```

| Name | Description | Type | Always Present | Example |
|-------------|---|---------|----------------|----------------------------------|
| menuItemRef | The identifier of the menu item that represents this side item. | Integer | Yes | 443 |
| count | The number of items to select from the group when adding the combo meal to a check. | Integer | No | 2 |
| prices | An array of zero or more prices for the combo menu item. | Array | Yes | See Combo Menu Item Price object |

Combo Menu Item Price

Combo menu item price is the amount charged for the sale of a combo menu item.

```
{
  "priceSequence": 1,
  "price": 1.12
}
```

| Name | Description | Type | Always Present | Example |
|---------------|--|---------|----------------|---------|
| priceSequence | The price sequence number. | Integer | Yes | 1 |
| price | The price that can be used when adding the menu item to a check. | Number | Yes | 1.12 |

Condiment Item

```
{
  "condimentId": "822815",
  "name": { (Translated String) },
  "familyGroupRef": 51,
  "definitions": [ { (Menu Item Definition) } ],
  "dietaryInformation": ["vegan", "low sodium"],
  "tags": ["online", "seasonal"],
  "tagGroups": [ { (Tag Groups) } ]
}
```

| Name | Description | Type | Always Present | Example |
|--------------------|---|---------|----------------|--------------------------------------|
| condimentId | The menu item's object number reference. | Integer | Yes | 822815 |
| name | The name of the menu item defined in the POS. | Object | Yes | See Translated String object |
| familyGroupRef | The family group object number reference. | Integer | Yes | 51 |
| definitions | Array containing one or more definitions for the menu item. | Array | Yes | See Condiment Item Definition object |
| dietaryInformation | Array of Dietary values (strings). | Array | No | "vegan" |
| tags | Array of tag values (strings). | Array | No | "online" |
| tagGroups | Array of tagGroups containing one or more tags objects (strings). | Array | No | See Tag Groups object |

Condiment Item Definition

```

{
  "number": 1,
  "name": { (Translated String) },
  "name2": { (Translated String) },
  "consumerName": { (Translated String) },
  "consumerDescription": { (Translated String) },
  "images": [ { (Image Link) } ],
  "tags": ["online", "seasonal"],
  "allergens": [ { (Allergens) } ],
  "prices": [ (Menu Item Price) ],
  "nutritionalData": [ { (Nutritional Data) } ],
  "options": ["containsAlcohol"],
  "extensions": { (Extension Data) }
}

```

| Name | Description | Type | Always Present | Example |
|---------------------|---|---------|----------------|------------------------------|
| number | The number of the definition. | Integer | Yes | 1 |
| name | The name of the item. | Object | Yes | See Translated String object |
| name2 | The second name of the item. | Object | Yes | See Translated String object |
| consumerName | Name defined for use in a consumer interface. | Object | No | See Translated String object |
| consumerDescription | Description defined for consumer interface. | Object | No | See Translated String object |
| images | Array of Image objects. | Array | No | See Image Link object |
| tags | Array of tag values (strings). | Array | No | "online" |
| allergens | Array of Allergen objects that apply to this menu item. | Array | No | See Allergen object |
| prices | Array of zero or more prices for the item. | Array | No | See Menu Item Price object |

| Name | Description | Type | Always Present | Example |
|-----------------|---|--------|----------------|-----------------------------|
| nutritionalData | Array of nutritional data objects for the menu item condiment. It is assumed that nutritional data are defined where the serving size is one of the menu items. | Array | No | See Nutritional Data object |
| options | Array of options. One or more of the following values are allowed: "containsAlcohol " | Array | No | ["containsAlcohol"] |
| extensions | An object containing additional attributes for the group. | Object | No | See Extension Data object |

Condiment Group

```
{
  "condimentGroupId": 285765,
  "name": { (Translated String) },
  "consumerName": { (Translated String) },
  "consumerDescription": { (Translated String) },
  "condimentItemRefs": [
    "569775",
    "569776",
    "569777"
  ],
  "images": [ { (Image Link) } ]
}
```

| Name | Description | Type | Always Present | Example |
|---------------------|--|---------|----------------|--|
| condimentGroupId | The condiment group's object number reference. | Integer | Yes | 293385 |
| name | The name of the condiment rule defined in the POS. | Object | Yes | See Translated String object |
| consumerName | Name defined for use in a consumer interface. | Object | No | See Translated String object |
| consumerDescription | Description defined for consumer interface. | Object | No | See Translated String object |
| condimentItemRefs | An array of integer references to the condiment items in this group. If no condiments are configured this array will be empty. | Array | Yes | ["569775", "569776", "569777"] |
| images | Array of Image objects. | Array | No | See Image Link object |

Condiment Group Rule

```
{  
  "condimentGroupRef": 293385,  
  "minimumCount": 1,  
  "maximumCount": 9  
}
```

| Name | Description | Type | Always Present | Example |
|-------------------|--|---------|----------------|---------|
| condimentGroupRef | The object number reference of the condiment group the rule is associated with. | Integer | Yes | 293385 |
| minimumCount | Minimum number of condiments to select from this group. A value of "0" indicates no minimum. | Integer | Yes | 1 |
| maximumCount | Maximum number of condiments to select from this group. A value of "0" indicates no maximum. | Integer | Yes | 9 |

Default Condiments

```
{
  "condimentRef": 201,
  "quantity": 2
}
```

| Name | Description | Type | Always Present | Example |
|--------------|---|---------|----------------|---------|
| condimentRef | A reference to the condiment. | Integer | Yes | 201 |
| quantity | The quantity of condiment applied by default. | Integer | Yes | 2 |

Translated String

```
{
  "en-US": "coffee",
  "es-ES": "café",
  "lt-LT": "kavos"
}
```

| Name | Description | Type | Always Present | Example |
|-----------------|--|--------|----------------|--|
| <language-Code> | <p><language-code> is the key of a map/dictionary where the key value one of the languages available at the location (see organization: location service).</p> <p>The value is the string in the language identified by the key.</p> | String | Yes | "en-US": "coffee", "es-ES": "café", "lt-LT": "kavos" |

Menu Item Screen Lookup

Screen look ups (SLUs) are used to allow the grouping of similar items in various user interfaces and are configured against the menu item definition.

```
{  
  "sluNumber": 2,  
  "sluId": 23,  
  "name": { (Translated String) },  
  "images": [ { (Image Link) } ]  
}
```

| Name | Description | Type | Always Present | Example |
|-----------|---|---------|----------------|------------------------------|
| sluNumber | Represents the SLU property name of the POS menu item definition. SLU2 is sluNumber = 2, SLU8 is sluNumber = 8 etc. SLU is sluNumber = 1. | Integer | Yes | 2 |
| sluId | The POS identifier for the SLU. | Integer | Yes | 23 |
| name | The name of the SLU. | Object | No | See Translated String object |
| images | Array of Image objects. | Array | No | See Image Link object |

Extension Data

Supplemental configuration details used to provide additional information about the parent object.

```
{  
  type:<string,object> map  
}
```

| Name | Description | Type | Always Present | Example |
|------|---|---------------|----------------|---------|
| | Container for extension data configured in POS. | String/object | No | |

Image Link

Usage Note: Images URLs hosted by Oracle should not be distributed and utilized directly by downstream applications. Image URLs are provided to give external systems access to pull images associated with Oracle configuration and then cache those images in a performance appropriate environment for their consumption.

```
{
  "index": 1
  "url": "https://oracleObjectStore.com/images/coffee822815.jpg",
  "altText": "pizza",
  "description": "pizza description",
  "isCloudImage": true,
  "size": "string"
}
```

| Name | Description | Type | Always Present | Example |
|--------------|---|---------|----------------|---|
| index | Identifier for the image | String | No | 1 |
| url | The URL of one of the menu item's images. | String | Yes | "https://oracleObjectStore.com/images/coffee822815.jpg" |
| altText | Image alternative text. | String | No | "pizza" |
| description | Description text for the image. | String | No | "pizza description" |
| isCloudImage | True or false. | Boolean | No | true |
| size | Image size. | String | No | "string" |

Allergens

```
{  
    "allergenId": "Beef",  
    "name": { (Translated String) }  
}
```

| Name | Description | Type | Always Present | Example |
|------------|-----------------------------|--------|----------------|------------------------------|
| allergenId | Identifier for an allergen. | String | Yes | "Beef" |
| name | Name of the allergen. | String | No | See Translated String object |

Nutritional Data

```
{
  "nutritionalItemId": "sodium",
  "value": 475,
  "unitOfMeasure": "milligrams",
  "name": { (Translated String) }
}
```

| Name | Description | Type | Always Present | Example |
|-------------------|---|---------|----------------|------------------------------|
| nutritionalItemId | Identifier for a nutritional item. | String | Yes | "sodium" |
| value | The amount of the nutritional item associated with the menu item. | Integer | No | 475 |
| unitOfMeasure | Unit of measure for nutritional item. | String | No | "Milligrams" |
| name | Name of nutritional item. | String | Yes | See Translated String object |

Tag Groups

```
{
  "id": "web ordering",
  "tags": ["online", "seasonal"]
}
```

| Name | Description | Type | Always Present | Example |
|------|-------------------------------------|--------|----------------|----------------|
| id | Unique identifier for the tag group | String | Yes | "web ordering" |
| tags | Array of tag values (strings). | Array | Yes | "online" |

ProblemDetails

Problem details is used as standard model for reporting details when HTTP error status code is returned. This definition is defined by [RFC7807](#).

```
{
  "type": "error:validation",
  "title": "Required value not specified.",
  "details": " The orgShortName value is required.",
  "instance": "required_value_missing"
}
```

| Name | Description | Type | Always Present | Example |
|----------|--|--------|----------------|---------------------------------------|
| type | A URI reference that identifies the problem type. When this member is not present, its value is assumed to be "about:blank". | String | No | "error:validation" |
| title | A short, human-readable summary of the problem type. | String | No | "Required value not specified." |
| details | A human-readable explanation specific to this occurrence of the problem. | String | No | "The orgShortName value is required." |
| instance | A URI reference that identifies the specific occurrence of the problem. It may or may not yield further information if dereferenced. | String | No | "required_value_missing" |

5

Checks API

The STSG2 Checks API is used to create and manage the checks within a revenue center (use the Organization Service to locate a revenue center). Configuration content (for example, menu items or discounts) from the Configuration API is used to populate a check.

Paths

The {basePath} for resources on the Checks API is:

```
https://{host/path}/api/v1/
```

The Checks API provides access to the get and modify checks in a revenue center. The context of the operation is defined by the {orgShortName}, {locRef}, and {rvcRef} parameters. In many cases the operations are executed by routing request to on-premises services. This has an increased latency over requests that are processed by cloud-base services.

Check operations that include a check in the request, get the value of the {orgShortName}, {locRef}, and {rvcRef} from the request body via the check header. Check operations that do not include check in the requests, specify these values in the header.

POST checks/Calculator

The API used to calculate totals on a check. The orgShortName, locRef, and rvcRef in the check header are used to define the context of the operation.

POST {basePath}/checks/calculator

Content-Type: application/json

Request

Headers

| Name | Description | Type | Required | Example |
|-----------------------|---|---------|----------|------------|
| Simphony-OrgShortName | Organization identifier. | String | Yes | "tfoinc" |
| Simphony-LocRef | Location identifier. | String | Yes | "fdmnh144" |
| Simphony-RvcRef | Revenue center identifier. | Integer | Yes | 42 |
| Accept-Language | Identifies the language that is desired for the response. | String | No | "en-US" |

Request Body

| Name | Description | Type | Required | Example |
|------|---|-------------|----------|--------------------------|
| | Request body contains the Check Object. | JSON Object | Yes | { (Check Object) } |

200 Response

```
{
  (Check Object)
}
```

| Name | Description | Type | Always Present | Example |
|------|-------------------------------------|-------------|----------------|------------------|
| | Response contains the Check Object. | JSON Object | Yes | See Check object |

Other Responses

| Name | Description | Type | Always Present | Example |
|------|---|-------------|----------------|--|
| 400 | Response contains the Problem Details object. | JSON Object | No | { (Problem Details object) } |
| 521 | 521 Service Timeout | | No | |

POST checks

API to create a new check. The orgShortName, locRef, and rvcRef values in the check header are used to define the location and revenue center where the operation will occur.

POST {basePath}/checks

Content-Type: application/json

Request**Headers**

| Name | Description | Type | Required | Example |
|-----------------------|---|---------|----------|------------|
| Simphony-OrgShortName | Organization identifier. | String | Yes | "tfoinc" |
| Simphony-LocRef | Location identifier. | String | Yes | "fdmnh144" |
| Simphony-RvcRef | Revenue center identifier. | Integer | Yes | 42 |
| Accept-Language | Identifies the language that is desired for the response. | String | No | "en-US" |

Request Body

| Name | Description | Type | Required | Example |
|------|---|-------------|----------|-----------------------------|
| | Request body contains the Check Object. | JSON Object | Yes | { (Check Object) } |

200 Response

```
{  
  (Check Object)  
}
```

| Name | Description | Type | Always Present | Example |
|------|-------------------------------------|-------------|----------------|------------------|
| | Response contains the Check Object. | JSON Object | No | See Check object |

Other Responses

| Error Response Code | Description | Type | Always Present | Example |
|---------------------|---|-------------|----------------|------------------------------------|
| 400 | Response contains the Problem Details object. | JSON Object | No | { (Problem Details object) } |
| 521 | 521 Service Timeout | | No | |

POST checks/{checkRef}/round

API adds a round to an existing check. If for some reason the update can't be made to the check due to the check's state at the POS, an appropriate HTTP response and response code will be returned. This operation does not alter items already on the check from previous rounds.

POST {basePath}/checks/{checkRef}/round

Content-Type: application/json

Request

/checks/929aacee2c6d42c78ae877e824c28eed00000431/round

Headers

| Name | Description | Type | Required | Example |
|-----------------------|---|---------|----------|------------|
| Simphony-OrgShortName | Organization identifier. | String | Yes | "tfoinc" |
| Simphony-LocRef | Location identifier. | String | Yes | "fdmnh144" |
| Simphony-RvcRef | Revenue center identifier. | Integer | Yes | 42 |
| Accept-Language | Identifies the language that is desired for the response. | String | No | "en-US" |

Path Parameters

| Name | Description | Type | Required | Example |
|----------|-------------------|--------|----------|--|
| checkRef | Check identifier. | String | Yes | "929aacee2c6d42c78ae877e824c28eed00000431" |

Request Body

| Name | Description | Type | Required | Example |
|------|---|-------------|----------|--------------------------|
| | Request body contains the Check Object. | JSON Object | Yes | { (Check Object) } |

200 Response

```
{
  (Check Object)
}
```

| Name | Description | Type | Always Present | Example |
|-------------|-------------------------------------|-------------|-----------------------|------------------|
| | Response contains the Check Object. | JSON Object | Yes | See Check object |

Other Responses

| Error Response Code | Description | Type | Always Present | Example |
|----------------------------|---|-------------|-----------------------|---------------------------------------|
| 400 | Response contains the Problem Details object. | JSON Object | No | { (Problem Details object) } |
| 521 | 521 Service Timeout | | No | |

DELETE checks/{checkRef}

API cancels the requested check from the specified revenue center if present and in a state where cancelation is allowed. Request uses the checkRef that can be found in the check header once a check has been created at the POS.

DELETE {basePath}/checks/{checkRef}

Request

/checks/929aacee2c6d42c78ae877e824c28eed00000431

Headers

| Name | Description | Type | Required | Example |
|-----------------------|----------------------------|---------|----------|------------|
| Simphony-OrgShortName | Organization identifier. | String | Yes | "tfoinc" |
| Simphony-LocRef | Location identifier. | String | Yes | "fdmnh144" |
| Simphony-RvcRef | Revenue center identifier. | Integer | Yes | 42 |

Path Parameters

| Name | Description | Type | Required | Example |
|----------|-------------------|--------|----------|--|
| checkRef | Check identifier. | String | Yes | "929aacee2c6d42c78ae877e824c28eed00000431" |

204 Response

| Name | Description | Type | Always Present | Example |
|------|---|------|----------------|---------|
| | The check has been successfully voided. | | No | |

Other Responses

| Error Response Code | Description | Type | Always Present | Example |
|---------------------|---|-------------|----------------|------------------------------------|
| 400 | Response contains the Problem Details object. | JSON Object | No | { (Problem Details object) } |
| 404 | HTTP 404 Resource not found. | | No | |
| 521 | 521 Service Timeout | | No | |

GET checks

API returns the available open checks from the specified revenue center. Options to return all checks meeting a specified set of criteria is supported via query parameters. The details in these responses can then be used to retrieve the details of a specific check.

GET {basePath}/checks

Content-Type: application/json

Request

/checks?checkEmployeeRef=65&sinceTime=2020-12-31T23:59Z

/checks?orderTypeRef=2&includeClosed=true

/checks?checkNum=976&sinceTime=2020-12-31T23:59Z&includeClosed=true

Headers

| Name | Description | Type | Required | Example |
|-----------------------|---|---------|----------|------------|
| Accept-Language | Identifies the language that is desired for the response. | String | No | "en-US" |
| Simphony-OrgShortName | The organization identifier. | String | Yes | "tfoinc" |
| Simphony-LocRef | The location identifier. | String | Yes | "fdmnh144" |
| Simphony-RvcRef | The revenue center identifier. | Integer | Yes | 42 |

Query Parameters

| Name | Description | Type | Required | Example |
|------------------|--|---------|----------|---------------------|
| checkEmployeeRef | The reference number of the employee that owns the check. Allows returning of checks for only a targeted employee. | Integer | No | 65 |
| sinceTime | Only checks created on or after this time are returned in the result. Date time is UTC. | String | No | "2020-12-31T23:59Z" |
| checkNumbers | Only checks with these numbers are returned. It is possible to get more than one check with the same check number. | Integer | No | 976 |

| Name | Description | Type | Required | Example |
|---------------|---|---------|----------|---------|
| orderTypeRef | Only checks of this order type are included in the results. | Integer | No | 2 |
| includeClosed | When true, both open and closed checks are included in the results, otherwise only closed checks are included. If not included as a query parameter will be assumed to be false. | Boolean | No | true |
| tableName | A table reference to filter by the table number or table name. tableName attribute can reflect either a single table number or a table name (in both cases represented by a string data type in the api). RVC option bit 18 is responsible for deciding if the value reflected in the tableName is utilized by the POS as the table name or the table number. | String | No | "23b", |

200 Response

```
{
  "items": [ { (Check Header Object) } ]
}
```

| Name | Description | Type | Always Present | Example |
|------|--|-------------|----------------|--------------------------|
| | Array of Check Header JSON objects. If there are no checks that meet the criteria of the request this array will be empty. | JSON Object | Yes | See Check Header object. |

Other Responses

| Error Response Code | Description | Type | Always Present | Example |
|----------------------------|---|-------------|-----------------------|---------------------------------------|
| 400 | Response contains the Problem Details object. | JSON Object | No | { (Problem Details object) } |
| 404 | 404 Requested resource not found. | | No | |
| 521 | 521 Service Timeout | | No | |

GET checks/{checkRef}

API returns the requested check from the specified revenue center using the checkRef which can be found in the check status response once a check has been created at the POS or by using one of the other known query parameters with the GET Checks endpoint to retrieve the checkRef.

GET {basePath}/checks/{checkRef}

Content-Type: application/json

Request

/checks/929aacee2c6d42c78ae877e824c28eed00000431

Headers

| Name | Description | Type | Required | Example |
|-----------------------|---|---------|----------|------------|
| Accept-Language | Identifies the language that is desired for the response. | String | No | "en-US" |
| Simphony-OrgShortName | The organization identifier. | String | Yes | "tfoinc" |
| Simphony-LocRef | The location identifier. | String | Yes | "fdmnh144" |
| Simphony-RvcRef | The revenue center identifier. | Integer | Yes | 42 |

Path Parameters

| Name | Description | Type | Required | Example |
|----------|-------------------|--------|----------|---|
| checkRef | Check identifier. | String | Yes | "929aacee2c6d42c78ae877e824c28eed0000431" |

200 Response

```
{
  "items": [ { (Check Object) } ]
}
```

| Name | Description | Type | Always Present | Example |
|------|--|-------------|----------------|-------------------|
| | Response contains an array including the Check Object. If no check was found meeting the criteria of the request the returned array will be empty. | JSON Object | Yes | See Check object. |

Other Responses

| Error Response Code | Description | Type | Always Present | Example |
|---------------------|---|-------------|----------------|------------------------------------|
| 400 | Response contains the Problem Details object. | JSON Object | No | { (Problem Details object) } |
| 404 | The checkRef was not found at the revenue center requested. | | No | |
| 521 | 521 Service Timeout | | No | |

GET checks/{checkRef}/printed

API returns an array of strings containing text suitable for printing on a 40-column printer.

GET {basePath}/checks/{checkRef}/printed

Content-Type: application/json

Request

/checks/929aacee2c6d42c78ae877e824c28eed00000431/printed

Headers

| Name | Description | Type | Required | Example |
|-----------------------|---|---------|----------|------------|
| Accept-Language | Identifies the language that is desired for the response. | String | No | "en-US" |
| Simphony-OrgShortName | The organization identifier. | String | Yes | "tfoinc" |
| Simphony-LocRef | The location identifier. | String | Yes | "fdmnh144" |
| Simphony-RvcRef | The revenue center identifier. | Integer | Yes | 42 |

Path Parameters

| Name | Description | Type | Required | Example |
|----------|-------------------|--------|----------|---|
| checkRef | Check identifier. | String | Yes | "929aacee2c6d42c78ae877e824c28eed0000431" |

200 Response

```
{
  "items": [ { (Array of strings) } ]
```

}

| Name | Description | Type | Always Present | Example |
|------|---|-------------|----------------|--|
| | Response contains an Array of Strings formatted for printing. | JSON Object | Yes | <pre>{ "items": ["12 STS Page 2", "-----", "CHK 75 TBL 2/1", " 11/3/2020 ", "-----", " DineIn ", " 1 Cheese Balls 10.00 ", " 1 Nachos 120.00 ", " *SPECIAL REQUESTS* ", " Please include extra sauce on side ", " 1 Cheese Balls 10.00 ", " STS Open \$ SC 1.23 ", " 1 Cheese Balls 10.00 ", " CashAuto \$151.23 ", " Subtotal \$150.00 ", " Other \$1.23 ", " Payment \$151.23 ", "Change Due \$0.00", " ----- Check Closed ----- ", " 11/3/2020 5:02 PM "] }</pre> |

Other Responses

| Error Response Code | Description | Type | Always Present | Example |
|---------------------|---|-------------|----------------|---|
| 400 | Response contains the Problem Details object. | JSON Object | No | <pre>{ (Problem Details object) }</pre> |
| 404 | The checkRef was not found at the revenue center requested. | | No | |
| 521 | 521 Service Timeout | | No | |

Resources

Check

application/json

```
{
  "header": { (Check Header) },
  "notificationOptions": { (Check Notification Options) },
  "checkNotifications": [ { (Check Notification) } ],
  "menuItems": [ { (Check Menu Item) } ],
  "comboMeals": [ { (Check Combo Meal Item) } ],
  "discounts": [ { (Check Discount Item) } ],
  "serviceCharges": [ { (Check Service Charge Item) } ],
  "extensions": [ { (Check Extension Item) } ],
  "taxes": [ { (Check Tax Item) } ],
  "tenders": [ { (Check Tender Item) } ],
  "printedLines": { (Check Printed Lines Item) },
  "totals": { (Check Totals) }
}
```

| Name | Description | Type | Always Present | Example |
|---------------------|---|--------|----------------|---------------------------------------|
| header | The check header. | Object | Yes | See Check Header object |
| notificationOptions | Integrator-provided options for notifications. | Object | No | See Check Notification Options object |
| checkNotifications | Array of past notifications for the check. | Array | No | See Check Notification object |
| menuItems | Array of menu items. If there were no menu items on the check the returned array will be empty. | Array | Yes | See Check Menu Item object |
| comboMeal | Array of combo meal items. If there were no combo meal items on the check the returned array will be empty. | Array | Yes | See Check Combo Meal Item object |

| Name | Description | Type | Always Present | Example |
|----------------|--|-------------|-----------------------|--------------------------------------|
| discounts | Array of discount items. If there were no discounts on the check the returned array will be empty. | Array | Yes | See Check Discount Item object |
| serviceCharges | Array of service charge items. If there were no service charges on the check the returned array will be empty. | Array | Yes | See Check Service Charge Item object |
| extensions | Array of extension items. | Array | No | See Check Extension Item object |
| taxes | Array of tax item. If there were no taxable items on the check the returned array will be empty. | Array | Yes | See Check Tax Item object |
| tenders | Array of tender items. If there were no tenders on the check the returned array will be empty. It is important to note that only one tender is supported with each POST request, however multiple tenders can be included in the response. | Array | Yes | See Check Tender Item object |
| printedLines | Check Printed Lines Items. If there was no printer configured the printedLines will not be returned. | Object | No | See Check Printed Lines Item object |
| totals | The check totals. | Object | No | See Check Totals object |

Definitions

Check Header

```
{
  "orgShortName": "tfoinc",
  "locRef": "fdmnh144",
  "rvcRef": "42",
  "checkRef": "929aacee2c6d42c78ae877e824c28eed00000431",
  "idempotencyId": "fd636ddfa7d5461eae1e31e0b756545a",
  "checkNumber": 42139,
  "checkName": "Smith",
  "checkEmployeeRef": 88,
  "orderTypeRef": 1,
  "tableName": "23b",
  "tableGroupNumber": 1
  "openTime": "2020-12-31T23:59:59Z",
  "pickupTime": "2021-08-23T13:09:15.483Z",
  "fireTime": "2020-12-31T23:59:59Z",
  "guestCount": 3,
  "language": "en-US"
  "isTrainingCheck": true,
  "informationLines": " ",
  "paymentStoreId": "12345",
  "status": "open",
  "preparationStatus": "Submitted"
}
```

| Name | Description | Type | Always Present | Example |
|--------------|--------------------------------|---------|----------------|------------|
| orgShortName | The organization identifier. | String | Yes | "tfoinc" |
| locRef | The location identifier. | String | Yes | "fdmnh144" |
| rvcRef | The revenue center identifier. | Integer | Yes | 42 |

| Name | Description | Type | Always Present | Example |
|------------------|---|---------|----------------|---|
| checkRef | The unique check reference generated by the POS system when the check is created. | String | No | "929aacee2c6d42c78ae877e824c28eed0000431" |
| idempotencyId | A unique identifier for the request generated by the integrator. This should be a UUID v4 formatted value minus dashes. <i>Pattern: [0-9a-f]{32}</i> . | String | Yes | "fd636ddfa7d5461eae1e31e0b756545a" |
| checkNumber | A check identifier generated by the POS when the check is created. | Integer | No | 42139 |
| checkName | The reference for the check provided at time of check creation. This must be unique among all open checks at the revenue center. | String | No | "Smith" |
| checkEmployeeRef | The identifier of the employee that is used for the operations. Symphony: the employee object number. | Integer | Yes | 88 |
| orderTypeRef | The order type identifier from the revenue center configuration. | Integer | Yes | 1 |
| tableName | The table for the check from the revenue center configuration. tableName attribute can reflect either a single table number or a table name (in both cases represented by a string data type in the api). RVC option bit 18 is responsible for deciding if the value reflected in the tableName is utilized by the POS as the table name or the table number. | String | No | "23b" |

| Name | Description | Type | Always Present | Example |
|------------------|--|---------|----------------|----------------------------|
| tableGroupNumber | The table-group of the check. Assigned by POS and indicates the number of checks open checks with the same table. | Integer | No | 1 |
| openTime | The time the check is opened/created. Time is UTC. | String | Yes | "2020-12-31T23:59:59Z" |
| pickupTime | The time requested for the order to be collected. If not provided the current time plus the Service Level Time for the given order type is assumed. Time is local in the request but UTC in the response. | String | No | "2021-08-23T13:09:15.483Z" |
| fireTime | The time requested for the order to "fire" to the kitchen. This is when preparation will start. If not provided, the current time is assumed. The dateTime in requests should be reflected in the Location/RVCs localized time, while responses will be shown in Zulu/UTC+0. | String | No | "2020-12-31T23:59:59Z" |
| guestCount | The number of guests on the check. | Integer | No | 3 |
| language | The language culture reference associated with the check. This value is used to return "name" property of check items in a desired language. | String | No | "en-US" |
| isTrainingCheck | Flag used to identify a training check. | Boolean | No | false |

| Name | Description | Type | Always Present | Example |
|------------------|--|---------------|----------------|---------------------|
| informationLines | An array of strings containing text that may appear on the guest check. Consult the POS administrator to determine what is supported by their configuration. | Array | No | |
| paymentStoreId | An identifier of a payment store provided by the point of sale. | String | No | "12345" |
| status | Information about the status of the check. Status options: open - indicates the check has a balance due and is 'open' (meaning it can be modified). closed - indicates the check has been paid in full and is 'closed' (meaning it cannot be modified). | String (enum) | Yes | "open", "closed" |

| Name | Description | Type | Always Present | Example |
|-------------------|---|---------------|----------------|---|
| preparationStatus | <p>Information about the preparation status of the check. Status options:</p> <p>Uninitialized – indicates that the check was not fired. In use when pickupTime and fireTime is utilized in the request. Also returned when check status is “closed”.</p> <p>Submitted - indicates that the check preparation started.</p> <p>Prepared – indicates that the check preparation was done. And moved “bumped” to the next stage.</p> <p>Packaged – indicates that the check expedition was done.</p> <p>It is required to have the Kitchen Display System (KDS) configured to utilize the Check preparationStatus.</p> | String (enum) | Yes | <p>(Multiple examples available only one valid value will be presented in the message.)</p> <p>“Uninitialized”</p> <p>or</p> <p>“Submitted”</p> <p>or</p> <p>“Prepared”</p> <p>or</p> <p>“Packaged”</p> |

Check Notification Options – Inline

Inline notifications options are used when Integrator is not registered and subscribed for notifications. Check notifications are available for STS Cloud and STS Local (on-premises).

```
{
  "enabled": true,
  "url": "https://your_web_hook_url:443/",
  "keyId": "KeyId",
  "key":
  "rd2SHIRwaE/e3js5uzHLxDsJmCSl23rrfX41Uq9HHeCcmoP2JnJLuqaY7TPnb03u
  Vbm+MN5gayQ1MBs+NrT7Tn=="
}
```

| Name | Description | Type | Always Present | Example |
|---------|---|---------|----------------|--------------------------------|
| enabled | A flag indicating whether notifications should be sent for the check. Set to true to request notifications. | Boolean | Yes | true or false |
| url | Integrator-provided web-hook callback URL. Must be able to accept POST requests. Is required if 'enabled' is set to 'true' and per-check notifications are needed. Must use port 443. | String | No | https://your_web_hook_url:443/ |
| keyId | Integrator-provided id for key. Is required if 'enabled' is set to 'true' and per-check notifications are needed. | String | No | "KeyId" |

| Name | Description | Type | Always Present | Example |
|------|--|--------|----------------|--|
| key | Integrator-provided HMAC SHA-256 key, with length 64 bytes. Base64 encoded string. Is required if 'enabled' is set to 'true' and per-check notifications are needed. | String | No | "rd2SHIRwaE/ e3js5uzHLxD sJmCSI23rrfX 41Uq9HHeCc moP2JnJLuqa Y7TPnb03uV bm+MN5gay Q1MBs+NrT7 Tn==" |

Check Notification Options – Subscription

The following notification options are used when Integrator is registered and subscribed for notifications. Check notifications are available for STS Cloud and STS Local (on-premises).

```
{  
  "enabled": true  
}
```

| Name | Description | Type | Always Present | Example |
|---------|---|---------|----------------|---------------------|
| enabled | A flag indicating whether notifications should be sent for the check. Set to true to request notifications. | Boolean | Yes | true or false |

Check Notification Messages

application/json

```
{
  "id": "4c105c5b-e34f-4484-b6d3-9fd1dced6577",
  "creationDate": "2021-12-08T19:58:03.7774254Z",
  "messageType": { (Check Notification Message Type) },
  "resource": { (Check Notification Messages Resource) },
  "data": { (Check Notification Messages Data) }
}
```

| Name | Description | Type | Always Present | Example |
|--------------|--|--------|----------------|---|
| id | Message identifier. | String | Yes | "4c105c5b-e34f-4484-b6d3-9fd1dced6577" |
| creationDate | Message created date and time. | string | Yes | "2021-12-08T19:58:03.7774254Z" |
| messageType | Information about the type of message. | Object | Yes | See Check Notification Message Type object |
| resource | Information about the STS resource affected by this message. | Object | Yes | See Check Notification Messages Resource object |
| data | The notification data. | Object | Yes | See Check Notification Messages Data object |

Check Notification Messages Type

```
{
  "id": "CheckNotification"
}
```

| Name | Description | Type | Always Present | Example |
|------|---------------------------------|--------|----------------|---------------------|
| id | Identifier of the message type. | String | Yes | "CheckNotification" |

Check Notification Messages Resource

```
{
  "orgShortName": "tfoinc",
  "locRef": "fdmnh144",
  "rvcRef": "42",
  "checkRef": "929aacee2c6d42c78ae877e824c28eed00000431"
}
```

| Name | Description | Type | Always Present | Example |
|--------------|---|---------|----------------|--|
| orgShortName | The organization identifier. | String | Yes | "tfoinc" |
| locRef | The location identifier. (If present depending on the hierarchy level requested in subscription.) | String | No | "fdmnh144" |
| rvcRef | The revenue center identifier. (If present depending on the hierarchy level requested in subscription.) | Integer | No | 42 |
| checkRef | The unique check reference generated by the POS system when the check is created. | String | Yes | "929aacee2c6d42c78ae877e824c28eed00000431" |

Check Notification Messages Data

```
{
  "status": "Packaged",
  "timeStampUtc": "2021-12-08T19:57:12.045Z"
}
```

| Name | Description | Type | Always Present | Example |
|--------------|---|--------|----------------|---|
| status | <p>Information about the preparation status of the check. Status options:</p> <p>Uninitialized: indicates that the check was not fired. In use when pickupTime and fireTime is utilized in the request. Also returned when check status is "closed".</p> <p>Submitted: indicates that the check preparation started.</p> <p>Prepared: indicates that the check preparation was done. And moved "bumped" to the next stage.</p> <p>Packaged: indicates that the check expedition was done.</p> <p>Expected for message Type: "CheckNotification" It is required to have the Kitchen Display System (KDS) configured to utilize the Check status notifications.</p> | String | No | <p>(Multiple examples available only one valid value will be presented in the message.)</p> <p>"Uninitialized"</p> <p>or</p> <p>"Submitted"</p> <p>or</p> <p>"Prepared"</p> <p>or</p> <p>"Packaged"</p> |
| timeStampUtc | <p>A timestamp indicating the date and time in UTC at which check status changed.</p> <p>Expected for message Type: "CheckNotification"</p> | String | No | "2021-12-08T19:57:12.045Z" |

Check Totals

```
{
  "subtotal": 20.00,
  "subtotalDiscountTotal": -1.00,
  "autoServiceCharge": 1.00,
  "serviceChargeTotal": 0.00,
  "taxTotal": 1.20,
  "paymentTotal": 5.00,
  "totalDue": 15.20
}
```

| Name | Description | Type | Always Present | Example |
|------------------------|---|--------|----------------|---------|
| subtotal | The subtotal of the check. This is the sum of net menu item totals. The net menu item total for a single menu item is (menu item total + item discounts + surcharge). | Number | No | 20.00 |
| subtotalDiscountTotal | The total of discounts applied to the subtotal. | Number | No | -1.00 |
| autoServiceChargeTotal | The total of service charges automatically added to the check. | Number | No | 0.00 |
| serviceChargeTotal | The service charge total of the check. | Number | No | 0.00 |
| taxTotal | The tax total of the check. This value excludes any inclusive tax. | Number | No | 1.20 |
| paymentTotal | The total of the payments on the check. | Number | No | 5.00 |
| totalDue | The remaining balance due for the check. | Number | Yes | 15.20 |

Comments

The values from the check total object relate in the following way:

```

    subtotal (sum of menu items sales - discounts)
- discountTotal
+ autoServiceChargeTotal
+ serviceChargeTotal
+ taxTotal
- paymentTotal
= totalDue

```

Check Menu Item

```

{
  "menuItemId": 822815,
  "definitionSequence": 1,
  "name": "coffee",
  "quantity": 2,
  "unitPrice": 1.50,
  "priceSequence": 1,
  "total": 3.00,
  "seat": 1,
  "referenceText": "Include insulated sleeve",
  "itemDiscounts": [ { (Check Discount Item) } ],
  "surcharge": 0.00,
  "condiments": [ { (Check Condiment Item) } ],
  "extensions": [ { (Check Extension Item) } ]
}

```

| Name | Description | Type | Always Present | Example |
|--------------------|---|---------|----------------|---------|
| menuItemId | The menu item's POS identifier. | Integer | Yes | 822815 |
| definitionSequence | The menu item definition sequence identifier. Indicates the definition of item that is used. This value is ignored on Oracle.RES platform. | Integer | Yes | 1 |

| Name | Description | Type | Always Present | Example |
|---------------|---|---------|----------------|---------------------------------|
| name | The name of the menu item defined in the POS. | String | No | "coffee" |
| quantity | The quantity of this menu item. If present minimum value is 1. | Number | No | 2 |
| unitPrice | The price associated with the item. | Number | No | 1.50 |
| priceSequence | The price sequence number to set the appropriate price level. | Integer | No | 1 |
| total | The total cost of the item (extended to account for the quantity). | Number | No | 3.00 |
| seat | Seat number of item on the check. | Integer | No | 1 |
| referenceText | Additional text associated with the item. maxLength: 20 | String | No | "Include insulated sleeve" |
| itemDiscounts | Array of discounts applied to the menu item. | Array | No | See Check Discount Item object |
| surcharge | The calculated surcharge amount based on the rate configured for the surcharge associated with the item. | Number | No | 0.00 |
| condiments | Array of condiments represented in menu item JSON objects. If there are no condiments configured, this array will be empty. | Array | Yes | See Check Condiment object |
| extensions | Array of extension detail. | Array | No | See Check Extension Item object |

Check Condiment Item

```
{
  "condimentId": 822815,
  "definitionSeq": 1,
  "name": "coffee",
  "quantity": 2,
  "unitPrice": 1.50,
  "priceSequence": 1,
  "total": 3.00,
  "seat": 1,
  "referenceText": "Include insulated sleeve",
  "itemDiscounts": [ { (Check Discount Item) } ],
  "surcharge": 0.00
}
```

| Name | Description | Type | Always Present | Example |
|--------------------|--|---------|----------------|----------|
| condimentId | The menu item's POS identifier. | Integer | Yes | 822815 |
| definitionSequence | The menu item definition sequence identifier. Indicates the definition of item that is used. This value is ignored on Oracle.RES platform. | Integer | Yes | 1 |
| name | The name of the menu item defined in the POS. | String | No | "coffee" |
| quantity | The quantity of this item. If present minimum value is 1. | Integer | No | 2 |
| unitPrice | The price that should be used for the item. | Number | No | 1.50 |
| priceSequence | The price sequence number to set the appropriate price level. | Integer | No | 1 |
| total | Amount of item for the specified quantity. | Number | No | 3.00 |
| seat | Seat number of item on the check. | Integer | No | 1 |

| Name | Description | Type | Always Present | Example |
|---------------|--|--------|----------------|--------------------------------|
| referenceText | Additional text associated with the item. | String | No | "Include insulated sleeve" |
| itemDiscounts | Array of discounts applied to the menu item. | Array | No | See Check Discount Item object |
| surcharge | Surcharge amount. | Number | No | 0.00 |

Check Combo Meal Item

```
{
  "comboMealId": 1,
  "seat": 1,
  "comboItem": { (Check Menu Item) },
  "mainItem": { (Check Menu Item) },
  "sideItems": [ { (Check Menu Item) } ],
  "extensions": [ { (Check Extension Item) } ]
}
```

| Name | Description | Type | Always Present | Example |
|-------------|--|---------|----------------|---------------------------------|
| comboMealId | Combo meal object number. | Integer | Yes | 1 |
| seat | Seat assignment for the item. | Integer | No | 1 |
| comboItem | Combo meal menu item (for example, Burger Combo). | Object | Yes | See Check Menu Item object |
| mainItem | Combo meal main item (for example, Hamburger). | Object | Yes | See Check Menu Item object |
| sideItems | Combo meal side items (for example, French Fries or Coke). | Array | Yes | See Check Menu Item object |
| extensions | Array of extension detail. | Array | No | See Check Extension Item object |

Check Discount Item

```
{
  "discountId": 726123,
  "name": "Restaurant Week",
  "seat": 1,
  "referenceText": "Additional discount text",
  "total": -5.00,
  "isAutomatic": true,
  "extensions": [ { (Check Extension Item) } ]
}
```

| Name | Description | Type | Always Present | Example |
|---------------|---|---------|----------------|---------------------------------|
| discountId | The discount's object number reference. | Integer | Yes | 726123 |
| name | The name of the discount defined in the POS. | String | No | "Restaurant Week" |
| seat | Seat number of item on the check. | Integer | No | 1 |
| referenceText | Additional text associated with the discount. | String | No | "Additional discount text" |
| total | The value of the discount for the associated line number. | Number | Yes | -5.00 |
| isAutomatic | Flag to indicate the item was applied by automatically by the POS system. | Boolean | No | true |
| extensions | Array of extension detail. | Array | No | See Check Extension Item object |

Check Service Charge Item

```
{  
  "serviceChargeId": 293385,  
  "name": "Delivery Charge",  
  "seat": 1,  
  "total": 5.00  
  "referenceText": "Additional service charge text",  
  "extensions": [ { (Check Extension Item) } ]  
}
```

| Name | Description | Type | Always Present | Example |
|-----------------|---|---------|----------------|----------------------------------|
| serviceChargeId | The service charge's object number reference. | Integer | Yes | 293385 |
| name | The name of the service charge. | String | No | "Delivery Charge" |
| total | The total of the service charge. | Number | Yes | 5.00 |
| seat | Seat number of item on the check. | Integer | No | 1 |
| referenceText | Additional text associated with the service charge. | String | No | "Additional service charge text" |
| extensions | Array of extension detail. | Array | No | See Check Extension Item object |

Check Extension Item

Object that can contain extensibility detail to be stored with the check.

```
{
  "displayName": "my extension detail",
  "appName": "my app",
  "dataName": "data name",
  "dataType": "string",
  "data": "mi-extn data",
  "options": [
    "printondisplay",
    "printonreceipt",
    "printInKitchen",
    "IncludeInApiResponse"
  ]
}
```

| Name | Description | Type | Always Present | Example |
|-------------|---|--------|----------------|---|
| displayName | A string displayed and/or printed if this item is displayed or printed. | String | Yes | "my extension detail" |
| appName | The name of the application associated with this data. | String | Yes | "my app" |
| dataName | Name of the data stored by this extensibility item. | String | Yes | "data Name" |
| datatype | Describes the type of data stored by this extensibility item. | String | Yes | "string" |
| data | The data payload for the extensibility data. | String | Yes | "mi-extn data" |
| options | Array of options. One or more of the following values are allowed: "printondisplay", "printonreceipt", "printInKitchen", "IncludeInApiResponse" | Array | No | ["printondisplay", "printonreceipt", "printInKitchen", "IncludeInApiResponse"] |

Check Tax Item

```
{  
  "taxRateId": 1,  
  "name": "Sales VAT",  
  "total": 1.34  
}
```

| Name | Description | Type | Always Present | Example |
|-----------|--|---------|----------------|-------------|
| taxRateId | The tax rate identifier. | Integer | Yes | 1 |
| name | The name of the tax. | String | No | "Sales VAT" |
| total | The total of the tax at for this rate. | Number | No | 1.34 |

Check Tender Item

```
{
  "tenderId": 1176,
  "name": "Pay on Pickup",
  "total": 5.00,
  "chargedTipTotal": 1.25,
  "referenceText": "Additional tender text",
  "paymentData": { (Check Payment Data) },
  "extensions": [ { (Check Extension Item) } ]
}
```

| Name | Description | Type | Always Present | Example |
|-----------------|---|---------|----------------|---------------------------------|
| tenderId | Tender identifier. | Integer | Yes | 1176 |
| name | The name of the tender defined in the POS. | String | No | "Pay on Pickup" |
| total | The total of the tender item. | Number | Yes | 5.00 |
| chargedTipTotal | The amount of charged tip to apply to the transaction. This amount is the portion of the payment that represents the charged tip. The chargedTipTotal field will not have an impact on a check if the "total" field is not specified. | Number | No | 1.25 |
| referenceText | Additional text associated with the tender. | String | No | "Additional tender text" |
| paymentData | Contains data related to a payment. | Object | No | See Check Payment Data object |
| extensions | Array of extension detail. | Array | No | See Check Extension Item object |

Check Payment Data

You can access Oracle Payment Interface documentation through the following Oracle Hospitality documentation page:

https://docs.oracle.com/en/industries/hospitality/integration_platforms.html

```
{  
  "type": "",  
  "data": { (data) }  
}
```

| Name | Description | Type | Always Present | Example |
|------|---|--------|----------------|---------------------------------------|
| type | Describes the type of data contained in this payment data object. Type structure identifier, format identifier values can be found at.. SPI Link | String | Yes | Reference to Oracle Payment Interface |
| data | Object containing data for the type of payment. | Object | Yes | Reference to Oracle Payment Interface |

Check Printed Lines Item

```
{
  "lines": [
    "      guest check header      ",
    "          gc header 2        ",
    "12 STS                          1",
    "-----",
    "          CHK 4                ",
    "          4/19/2022            ",
    "-----",
    "  TakeAway(p)                  ",
    " 2 Nachos 1                    8.02  ",
    "                                $8.02  ",
    "  Tax                          $0.70  ",
    "Total Due      $8.72",
    "          gc trailer 1         ",
    "          gc trailer 2         "
  ]
}
```

| Name | Description | Type | Always Present | Example |
|-------|--|-------|----------------|---|
| lines | Array of lines items. If there was no printer configured the printedLines will not be returned. | Array | No | { "lines": [" guest check header ", " gc header 2 ", "12 STS 1", "-----", " CHK 4 ", " 4/19/2022 ", "-----", " TakeAway(p) ", " 2 Nachos 1 8.02 ", " \$8.02 ", " Tax \$0.70 ", "Total Due \$8.72", " gc trailer 1 ", " gc trailer 2 "] } |

ProblemDetails

Problem details is used as standard model for reporting details when HTTP error status code is returned. This definition is defined by [RFC7807](#).

```
{
  "type": "error:validation",
  "title": "Required value not specified.",
  "details": " The orgShortName value is required.",
  "instance": "required_value_missing"
}
```

| Name | Description | Type | Always Present | Example |
|------------|--|--------|----------------|---------------------------------------|
| type | A URI reference that identifies the problem type. When this member is not present, its value is assumed to be "about:blank". | String | No | "error:validation" |
| title | A short, human-readable summary of the problem type. | String | No | "Required value not specified." |
| details | A human-readable explanation specific to this occurrence of the problem. | String | No | "The orgShortName value is required." |
| instance | A URI reference that identifies the specific occurrence of the problem. It may or may not yield further information if dereferenced. | String | No | "required_value_missing" |
| posDetails | (Problem Details Extension) Contains a list of the problem details from the POS System processing the request. | Array | No | See POS Error Detail Item object |

Fiscal Item

Model of a fiscal item.

```
{  
  "dataName": "taxId",  
  "dataType": "string",  
  "data": "37ARZPT4384Q1MT"  
}
```

| Name | Description | Type | Always Present | Example |
|----------|--|--------|----------------|-------------------|
| dataName | Fiscal data name. | String | No | "taxId" |
| dataType | Data type of the fiscal data extension. | String | No | "string" |
| data | String representation of the data value. | String | No | "37ARZPT4384Q1MT" |

POS Error Detail

```
{  
    "code": "general_pos_error",  
    "message": "Employee Object Number 17 is in training  
mode, operation not allowed"  
}
```

| Name | Description | Type | Always Present | Example |
|---------|--|--------|----------------|---|
| code | Short, unique identifier for the type of error. | String | No | "general_pos_error" |
| message | A human-readable explanation specific to this occurrence of the problem. | String | No | "Employee Object Number 17 is in training mode, operation not allowed." |

6

Employees API

The STSG2 Employees API is used to interact with an employee within a property (use the Organization Service to locate a property).

Paths

The {basePath} for resources on the Employees API is:

https://{host/path}/api/v1/

The Employees API provides access to the get an employee in a property. The context of the operation is defined by the {orgShortName} and {locRef} parameters.

GET employees

API returns a specific employee.

GET {basePath}/employees

Content-Type: application/json

Request

/employees?OrgShortName=tfoinc&LocRef=fdmnh144&EmployeeId=5

Headers

| Name | Description | Type | Required | Example |
|-------------------|---|--------|----------|-------------------------------|
| If-Modified-Since | Standard http caching header (http caching link). | String | No | Wed, 21 Oct 2015 07:28:00 GMT |
| If-None-Match | Standard http caching header (http caching link). | String | No | "8b573604" |

Query Parameters

| Name | Description | Type | Required | Example |
|--------------|------------------------------|---------|----------|------------|
| OrgShortName | The organization identifier. | String | Yes | "tfoinc" |
| LocRef | The location identifier. | String | Yes | "fdmnh144" |
| EmployeeId | Employee ID number | Integer | Yes | 5 |

200 Response

```
{
  Employee (See Employee Object)
}
```

Headers

| Name | Description | Type | Always Present | Example |
|---------------|---|--------|----------------|-------------------------------|
| Last-Modified | A timestamp indicating the date and time at which the origin server believes the selected representation was last modified. See RFC 7232 Section 2.2 (http caching link). | String | No | Wed, 21 Oct 2015 07:28:00 GMT |
| ETag | The current entity-tag for the selected representation. See RFC 7232 Section 2.3 (http caching link). | String | No | "8b573604" |

Body

| Name | Description | Type | Always Present | Example |
|------|--|-------------|----------------|---------------------|
| | Response contains the Employee Object. | JSON Object | Yes | See Employee Object |

304 Response**Header**

| Name | Description | Type | Always Present | Example |
|---------------|---|--------|----------------|-------------------------------|
| Last-Modified | A timestamp indicating the date and time at which the origin server believes the selected representation was last modified. See RFC 7232 Section 2.2 (http caching link). | String | No | Wed, 21 Oct 2015 07:28:00 GMT |
| ETag | The current entity-tag for the selected representation. See RFC 7232 Section 2.3 (http caching link). | String | No | "8b573604" |
| Name | Description | Type | Always Present | Example |
| | Not modified. | | | |

Error Response Codes

| Error Response Code | Description | Type | Always Present | Example |
|---------------------|---|-------------|----------------|---------------------------------------|
| 400 | Response contains the Problem Details object. | JSON Object | No | { (Problem Details object) } |
| 401 | 401 Unauthorized. | | No | |
| 403 | 403 Forbidden. | | No | |
| 404 | 404 Requested resource not found. | | No | |

Resources

Employee

application/json

```
{  
  "employeeNumber": 42  
}
```

| Name | Description | Type | Always Present | Example |
|----------------|-----------------|---------|----------------|---------|
| employeeNumber | Employee number | Integer | Yes | 42 |

Definitions

ProblemDetails

Problem details is used as standard model for reporting details when HTTP error status code is returned. This definition is defined by [RFC7807](#).

```
{
  "type": "error:validation",
  "title": "Required value not specified.",
  "details": " The orgShortName value is required.",
  "instance": "required_value_missing"
}
```

| Name | Description | Type | Always Present | Example |
|----------|--|--------|----------------|---------------------------------------|
| type | A URI reference that identifies the problem type. When this member is not present, its value is assumed to be "about:blank". | String | No | "error:validation" |
| title | A short, human-readable summary of the problem type. | String | No | "Required value not specified." |
| details | A human-readable explanation specific to this occurrence of the problem. | String | No | "The orgShortName value is required." |
| instance | A URI reference that identifies the specific occurrence of the problem. It may or may not yield further information if dereferenced. | String | No | "required_value_missing" |

7

Notifications API

The STSG2 Notifications Service is used to manage call back POST notifications messages that are sent to the integrator when they register to receive organization, configuration, check, and employee events.

Integrators must expose a service endpoint which accepts HTTP POST requests (webhook) to receive notifications from the STSG2 Notifications Service. The endpoint must implement TLS 1.2 and listen on port 443. The following top-level domains .com, .net, .org, .edu, .ca, .io, .site, .se, .sa are supported.

The Symphony 19.3.1 release was predominately focused on adding cloud notifications support.

The following notifications are supported for STSG2 cloud and on-premises integrations:

- Organizations Notification
- Configuration Notification
- Check Notification
- Employees Notification

Example request body

```
{
  "messages": [
    {
      "id": "8253c2a5-5b3c-497d-a87f-f8bb2e250ba7",
      "creationDate": "2021-08-13T15:40:43.511Z",
      "messageType": {
        "id": "CheckNotification"
      },
      "resource": {
        "orgShortName": "tfoinc",
        "locRef": "fdmnh144",
        "rvcRef": "42",
        "checkRef": "929aacee2c6d42c78ae877e824c28eed0000431"
      },
      "data": {
        "status": "Submitted",
        "timeStampUtc": "2021-08-13T15:40:44.501Z"
      }
    }
  ]
}
```


Expected response

Your service should POST a successful 200-299 response status code with an empty response body to acknowledge receipt of the webhook event.

Retry logic

At present retries are not supported. A notification will be sent only once.

Paths

The {basePath} for resources on the Notifications API is:

`https://{host/path}/api/v1/`

POST notifications/registration

The API is used to register a subscriber.

POST {basePath}/notifications/registration

Content-Type: application/json

Request

Request Body

| Name | Description | Type | Required | Example |
|----------------------|---|--------|----------|---|
| subscriberSecretView | Request body Subscriber Secret View object. | Object | Yes | { (SubscriberSecretView object) } |

200 Response

| Name | Description | Type | Always Present | Example |
|------|---|------|----------------|---------|
| | 200 OK response with empty message body | | | |

Other Responses

| Error Response Code | Description | Type | Always Present | Example |
|---------------------|-----------------------------------|------|----------------|---------|
| 404 | 404 Requested resource not found. | | No | |

PUT notifications/registration

The API is used to register or update subscriber. Intended to be used when subscriber's keyId, hmacKey, or keyType update is required. Existing subscriptions will remain intact and any notifications that are sent related to the subscription will utilize the newly updated details.

PUT {basePath}/notifications/registration

Content-Type: application/json

Request

Request Body

| Name | Description | Type | Required | Example |
|----------------------|---|--------|----------|---|
| subscriberSecretView | Request body Subscriber Secret View object. | Object | Yes | { (SubscriberSecretView object) } |

Responses

| Name | Description | Type | Always Present | Example |
|------|---|------|----------------|---------|
| 201 | 201 Created, response with empty message body. | | | |
| 204 | 204 No Content, response with empty message body. | | No | |

Other Responses

| Error Response Code | Description | Type | Always Present | Example |
|---------------------|---|-------------|----------------|---------|
| 400 | Response contains the Problem Details object. | JSON Object | No | |

DELETE notifications/registration

The API is used delete a subscriber.

DELETE {basePath}/notifications/registration

Content-Type: application/json

Request

No parameters

204 Response

| Name | Description | Type | Always Present | Example |
|------|---|------|----------------|---------|
| | 204 No Content response with empty message body | | | |

Other Responses

| Error Response Code | Description | Type | Always Present | Example |
|---------------------|-----------------------------------|------|----------------|---------|
| 404 | 404 Requested resource not found. | | No | |

POST notifications/subscriptions

The API is used for integrator to subscribe for notifications.

POST {basePath}/notifications/subscriptions

Content-Type: application/json

Request

Request Body

| Name | Description | Type | Required | Example |
|-----------------------|--|--------|----------|--|
| subscribtionViewModel | Request body Subscription View Model object. | Object | Yes | { (Subscription View Model object) } |

200 Response

```
{
  (Subscription object)
}
```

| Name | Description | Type | Always Present | Example |
|------|--------------------------------------|----------------|----------------|------------------------------------|
| | Subscription object JSON objects. | JSON Object | Yes | { (Subscription object) } |

Other Responses

| Error Response Code | Description | Type | Always Present | Example |
|---------------------|---|------|----------------|---------|
| 400 | Bad Request A subscription for message type ID 'EmployeesNotification' will return 400 if RvcRef has a value. Such a subscription would never receive any notifications. | | No | |
| 403 | 403 Forbidden | | No | |
| 404 | 404 Requested resource not found. | | No | |

GET notifications/subscriptions

The API is used to get the current set of subscriptions to a subscriber.

GET {basePath}/notifications/subscriptions

Content-Type: application/json

Request

No Parameters

200 Response

```
[
  {
    (Subscription object)
  }
]
```

| Name | Description | Type | Always Present | Example |
|------|-----------------------------------|-------------|----------------|---|
| | Subscription object JSON objects. | JSON Object | Yes | [{ (Subscription object) }] |

Other Responses

| Error Response Code | Description | Type | Always Present | Example |
|---------------------|---|-------------|----------------|---------|
| 400 | Response contains the Problem Details object. | JSON Object | No | |
| 404 | 404 Requested resource not found. | | No | |

DELETE notifications/subscriptions

The API is used to delete all the current set of subscriptions to a subscriber.

DELETE {basePath}/notifications/subscriptions

Content-Type: application/json

Request

No Parameters

204 Response

| Name | Description | Type | Always Present | Example |
|------|----------------|------|----------------|---------|
| | 204 No Content | | | |

Other Responses

| Error Response Code | Description | Type | Always Present | Example |
|---------------------|---|-------------|----------------|---------------------------------------|
| 400 | Response contains the Problem Details object. | JSON Object | No | { (Problem Details object) } |
| 404 | 404 Requested resource not found. | | No | |

GET notifications/subscriptions/{subscriptionId}

The API is used to get the subscriptions by a subscriptionId.

GET {basePath}/notifications/subscriptions/{subscriptionId}

Content-Type: application/json

Request

Path Parameters

| Name | Description | Type | Required | Example |
|----------------|--------------------------|--------|----------|--|
| subscriptionId | Subscription Identifier. | String | Yes | "055a5914-ca69-7776-b076-e036fdab486f" |

200 Response

```
{
  (Subscription object)
}
```

| Name | Description | Type | Always Present | Example |
|------|-----------------------------------|-------------|----------------|---------------------------------|
| | Subscription object JSON objects. | JSON Object | Yes | { (Subscription object) } |

Other Responses

| Error Response Code | Description | Type | Always Present | Example |
|---------------------|---|-------------|----------------|---------|
| 400 | Response contains the Problem Details object. | JSON Object | No | |
| 404 | 404 Requested resource not found. | | No | |

DELETE notifications/subscriptions/{subscriptionId}

The API is used to delete subscriptions by a subscriptionId.

DELETE {basePath}/notifications/subscriptions/{subscriptionId}

Content-Type: application/json

Request

Path Parameters

| Name | Description | Type | Required | Example |
|----------------|--------------------------|--------|----------|--|
| subscriptionId | Subscription Identifier. | String | Yes | "055a5914-ca69-7776-b076-e036fdab486f" |

204 Response

| Name | Description | Type | Always Present | Example |
|------|----------------|------|----------------|---------|
| | 204 No Content | | | |

Other Responses

| Error Response Code | Description | Type | Always Present | Example |
|---------------------|---|-------------|----------------|---------------------------------------|
| 400 | Response contains the Problem Details object. | JSON Object | No | { (Problem Details object) } |
| 404 | 404 Requested resource not found. | | No | |

GET notifications/discovery

The API is used to get a list of all the available MessageType Types

GET {basePath}/notifications/subscriptions/discovery

Content-Type: application/json

Request

No parameters

200 Response

```
[
  {
    (Notification Message Type object)
  }
]
```

| Name | Description | Type | Always Present | Example |
|------|--|-------------|----------------|--|
| | Notification Message Type object JSON objects. | JSON Object | Yes | [{ (Notification Message Type object) }] |

Other Responses

| Error Response Code | Description | Type | Always Present | Example |
|---------------------|-----------------------------------|------|----------------|---------|
| 404 | 404 Requested resource not found. | | No | |

POST Webhook

STSG2 includes resource level notifications that it facilitates via webhooks.

Integrators must expose a service endpoint which accepts HTTP POST requests (webhook) to receive notifications from the STSG2 Notifications Service. The endpoint must implement TLS 1.2 and listen on port 443. The following top-level domains .com, .net, .org, .edu, .ca, .io, .site, .se, .sa are supported. Timeout for HTTP requests to subscribers is 15 seconds with no retry.

HTTP POST requests from the STSG2 Notifications Service include Digest and Key-Id headers to allow the message to be verified.

POST {IntegratorProvidedURL}

Content-Type: application/json

Request

Headers

| Name | Description | Type | Required | Example |
|--------|---|--------|----------|--|
| Digest | Digest HMACSHA256 using key provided by Integrator at time of registration/subscription. The value of digest is Base64 encoded HMACSHA256 hash of the ASCII-encoded request message body. The Base64 decoded subscriber's Key is used as the hash key. | String | Yes | "SHA-256=VhKI34YgqC5ctbWfVjwT6tEriddmg2XqGpE3CauzPbU=" |
| Key-Id | Key ID that was used to sign the digest. | String | Yes | "myKey-Id" |

Resources

Notification Messages

A collection of notification messages. At present the size of the messages array is set to one. This may change in the future.

```
{
  "id": "4c105c5b-e34f-4484-b6d3-9fd1dced6577",
  "creationDate": "2021-12-08T19:58:03.7774254Z",
  "messageType": [ { (Notification Messages Type) } ],
  "resource": [ { (Notification Messages Resource) } ],
  "data": [ { (Notification Messages Data) } ]
}
```

| Name | Description | Type | Always Present | Example |
|--------------|--|--------|----------------|---|
| id | Message identifier. | String | Yes | "4c105c5b-e34f-4484-b6d3-9fd1dced6577" |
| creationDate | Message created date and time in UTC. | String | Yes | "2021-12-08T19:58:03.7774254Z" |
| messageType | Information about the type of message. | Object | Yes | See Notification Message Type object |
| resource | Information about the STS resource affected by this message. | Object | Yes | See Notification Messages Resource object |
| data | The notification data. | Object | Yes | See Notification Messages Data object |

Definitions

Subscriber

application/json

```
{
  "subscriberId":
  "BCg1Zwwi29jfSMO9NS00ODBwefjM2UtMDY4MzMxZDkwNTc2LmY482hdMS8uRFTUw
  OGQtNDVmZS07SJI n2TliZGEwZDAySHEO3R==",
  "keyId": "KeyId",
  "hmacKey": "22ido0sEt/guse24PsiLxDsJmCSlIuqljW41Uq4ZzrCcmoP3JnPsuO
  sY7AeuW91uJck+WW8gayQ1MBs+wu2FiB==",
  "keyType": "hmac-sha256"
}
```

| Name | Description | Type | Always Present | Example |
|--------------|---|--------|----------------|---|
| subscriberId | The subscriberId identifies uniquely the subscriber, practically matches its AUTHZ_CLIENTID value | String | Yes | "BCg1Zwwi29jfSMO9NS00ODBwefjM2UtMDY4MzMxZDkwNTc2LmY482hdMS8uRFTUwOGQtNDVmZS07SJI n2TliZGEwZDAySHEO3R==" |
| keyId | Identifier (GUID) | String | Yes | "KeyId" |
| hmacKey | HMACSHA256 key. Min 32bytes encoded as Base64 string. | String | Yes | "22ido0sEt/guse24PsiLxDsJmCSlIuqljW41Uq4ZzrCcmoP3JnPsuOsY7AeuW91uJck+WW8gayQ1MBs+wu2FiB==" |
| keyType | Currently the only allowed value is "hmac-sha256" | String | Yes | "hmac-sha256" |

Subscriber Secret View

A subscriber subset excluding subscriberId

application/json

```
{
  "keyId": "KeyId",
  "hmacKey": "22ido0sEt/guse24PsiLxDsJmCSlIuqljW41Uq4ZzrCcmoP3JnPsuOsY7AeuW91uJck+WW8gayQ1MBs+wu2FiB==",
  "keyType": "hmac-sha256"
}
```

| Name | Description | Type | Always Present | Example |
|---------|---|--------|----------------|--|
| keyId | Identifier (GUID) | String | Yes | "KeyId" |
| hmacKey | HMACSHA256 key. Min 32bytes encoded as Base64 string. | String | Yes | "22ido0sEt/guse24PsiLxDsJmCSlIuqljW41Uq4ZzrCcmoP3JnPsuOsY7AeuW91uJck+WW8gayQ1MBs+wu2FiB==" |
| keyType | Currently the only allowed value is "hmac-sha256" | String | Yes | "hmac-sha256" |

Subscription

application/json

```
{
  "subscriptionId": "055a5914-ca69-7776-b076-e036fdab486f",
  "callbackUri": "https://your_web_hook_url:443/",
  "messageType": { (Notification Message Type) },
  "postOfficeOptions": { (Post Office Options) },
  "orgShortName": "tfoinc",
  "locRef": "fdmnh144",
  "rvcRef": "42"
}
```

| Name | Description | Type | Always Present | Example |
|-------------------|---|---------|----------------|--|
| subscriptionId | Identifier(GUID) of this subscription | String | Yes | "055a5914-ca69-7776-b076-e036fdab486f" |
| callbackUri | Callback Uri for the subscription's notifications | String | Yes | "https://your_web_hook_url:443/" |
| messageType | Information about the type of message | Object | Yes | Notification Message Type object |
| postOfficeOptions | Information about the PostOffice for the subscription | Object | Yes | Post Office Options object |
| orgShortName | The organization identifier. | String | Yes | "tfoinc" |
| locRef | The location identifier. | String | No | "fdmnh144" |
| rvcRef | The revenue center identifier. | Integer | No | 42 |

Subscription View Model

A Subscription subset with the exclusions of subscriptionId and subscriberId

application/json

```
{
  "callbackUri": "https://your_web_hook_url:443/",
  "messageType": { (Notification Message Type) },
  "postOfficeOptions": { (Post Office Options) },
  "orgShortName": "tfoinc",
  "locRef": "fdmnh144",
  "rvcRef": "42"
}
```

| Name | Description | Type | Always Present | Example |
|-------------------|---|---------|----------------|----------------------------------|
| callbackUri | Callback Uri for the subscription's notifications | String | Yes | "https://your_web_hook_url:443/" |
| messageType | Information about the type of message | Object | Yes | Notification Message Type object |
| postOfficeOptions | Information about the PostOffice for the subscription | Object | Yes | Post Office Options object |
| orgShortName | The organization identifier. | String | Yes | "tfoinc" |
| locRef | The location identifier. | String | No | "fdmnh144" |
| rvcRef | The revenue center identifier. | Integer | No | 42 |

Notification Message Type

```
{
  "id": "CheckNotification"
}
```

| Name | Description | Type | Always Present | Example |
|------|--|--------|----------------|--|
| id | <p>Identifier of the message type [Source - POS]</p> <p>“CheckNotification”, “OrganizationsNotification”, “ConfigurationNotification” supports organization, property, and revenue center hierarchy level subscriptions.</p> <p>“EmployeesNotification” supports organization, and property hierarchy level subscriptions.</p> | String | Yes | <p>(Multiple examples available only one valid value will be presented in the message.)</p> <p>“CheckNotification”</p> <p>or</p> <p>“OrganizationNotification”</p> <p>or</p> <p>“ConfigurationNotification”</p> <p>or</p> <p>“EmployeesNotification”</p> |

Notification Messages Resource

```
{
  "orgShortName": "tfoinc",
  "locRef": "fdmnh144",
  "rvcRef": "42",
  "checkRef": "929aacee2c6d42c78ae877e824c28eed00000431"
}
```

| Name | Description | Type | Always Present | Example |
|--------------|--|---------|----------------|------------|
| orgShortName | The organization identifier. Expected for message Type: "CheckNotification", "OrganizationsNotification", "ConfigurationNotification", "EmployeesNotification" | String | Yes | "tfoinc" |
| locRef | The location identifier. Expected for message Type: (If present depending on the hierarchy level requested in subscription.) "CheckNotification", "OrganizationsNotification", "ConfigurationNotification", "EmployeesNotification" | String | No | "fdmnh144" |
| rvcRef | The revenue center identifier. Expected for message Type: (If present depending on the hierarchy level requested in subscription.) "CheckNotification", "OrganizationsNotification", "ConfigurationNotification" | Integer | No | 42 |

| Name | Description | Type | Always Present | Example |
|----------|--|--------|----------------|--|
| checkRef | <p>The unique check reference generated by the POS system when the check is created.</p> <p>Expected for message Type: "CheckNotification"</p> | String | No | "929aacee2c6 d42c78ae877 e824c28eed0 0000431" |

Notification Messages Data

```
{
  "status": "Packaged",
  "timeStampUtc": "2021-12-08T19:57:12.045Z"
}
```

| Name | Description | Type | Always Present | Example |
|--------------|---|--------|----------------|---|
| status | <p>Information about the preparation status of the check. Status options:</p> <p>Uninitialized: indicates that the check was not fired. In use when pickupTime and fireTime is utilized in the request. Also returned when check status is "closed".</p> <p>Submitted: indicates that the check preparation started.</p> <p>Prepared: indicates that the check preparation was done. And moved "bumped" to the next stage.</p> <p>Packaged: indicates that the check expedition was done.</p> <p>Expected for message Type: "CheckNotification"</p> | String | No | <p>(Multiple examples available only one valid value will be presented in the message.)</p> <p>"Uninitialized"</p> <p>or</p> <p>"Submitted"</p> <p>or</p> <p>"Prepared"</p> <p>or</p> <p>"Packaged"</p> |
| timeStampUtc | <p>A timestamp indicating the date and time in UTC at which check status changed.</p> <p>Expected for message Type: "CheckNotification"</p> | String | No | "2021-12-08T19:57:12.045Z" |

| Name | Description | Type | Always Present | Example |
|----------------|---|--------|----------------|--|
| ResourceType | Type of a resource. Expected for message Type: "ConfigurationNotification" | String | No | (Multiple examples available only one valid value will be presented in the message.) "MenuItemAvailability" or "Menus" or "TenderItems" or "ServiceCharges" or "Discounts" or "Taxes" |
| ResourceAction | Resource action. Expected for message Type: "OrganizationsNotification", "ConfigurationNotification", "EmployeesNotification" | String | No | "changed" |

Post Office Option

application/json

```
{  
  "PostOfficeType": "PushOnePostOffice"  
}
```

| Name | Description | Type | Always Present | Example |
|----------------|---|--------|----------------|---------------------|
| PostOfficeType | Information about the PostOffice for the subscription | String | Yes | "PushOnePostOffice" |

Problem Details

Problem details is used as standard model for reporting details when HTTP error status code is returned. This definition is defined by [RFC7807](#).

```
{
  "type": "error:validation",
  "title": "Required value not specified.",
  "details": " The orgShortName value is required.",
  "instance": "required_value_missing"
}
```

| Name | Description | Type | Always Present | Example |
|----------|--|--------|----------------|---------------------------------------|
| type | A URI reference that identifies the problem type. When this member is not present, its value is assumed to be "about:blank". | String | No | "error:validation" |
| title | A short, human-readable summary of the problem type. | String | No | "Required value not specified." |
| details | A human-readable explanation specific to this occurrence of the problem. | String | No | "The orgShortName value is required." |
| instance | A URI reference that identifies the specific occurrence of the problem. It may or may not yield further information if dereferenced. | String | No | "required_value_missing" |

8

Connection Status

The STSG2 Connection Status API is used to retrieve the connection status for a specified revenue center.

Paths

The {basePath} for resources on the Connection Status API is:

`https://{host/path}/api/v1/`

API to indicate status of check processing for a revenue center.

This request checks to see if STS has a connection for this property. The value of the connection status now does not represent a guarantee that the connection status will be the same at any point in the future.

HEAD connection status

API to indicate the state of the connection for a specific revenue center for servicing requests from the STSG2 cloud endpoints. The value returned is the last known state of the connection at the time of the request and could change at any time.

HEAD {basePath}/checks/connectionStatus

Content-Type: application/json

Request

`/checks/connectionStatus`

Headers

| Name | Description | Type | Required | Example |
|-----------------------|--------------------------------|---------|----------|------------|
| Simphony-OrgShortName | The organization identifier. | String | Yes | "tfoinc" |
| Simphony-LocRef | The location identifier. | String | Yes | "fdmnh144" |
| Simphony-RvcRef | The revenue center identifier. | Integer | Yes | 42 |

200 Response

| Name | Description | Type | Always Present | Example |
|------|---|------|----------------|---------|
| | Indicates if the location is currently connected. | | | |

Other Responses

| Error Response Code | Description | Type | Always Present | Example |
|---------------------|---|-------------|----------------|---------------------------------------|
| 400 | Response contains the Problem Details object. | JSON Object | No | { (Problem Details object) } |