

# Oracle Argus Dossier

## User's Guide



Release 8.4  
F51802-01  
September 2022

The Oracle logo, consisting of a solid red square with the word "ORACLE" in white, uppercase, sans-serif font centered within it.

ORACLE®

Oracle Argus Dossier User's Guide, Release 8.4

F51802-01

Copyright © 2019, 2022, Oracle and/or its affiliates.

This software and related documentation are provided under a license agreement containing restrictions on use and disclosure and are protected by intellectual property laws. Except as expressly permitted in your license agreement or allowed by law, you may not use, copy, reproduce, translate, broadcast, modify, license, transmit, distribute, exhibit, perform, publish, or display any part, in any form, or by any means. Reverse engineering, disassembly, or decompilation of this software, unless required by law for interoperability, is prohibited.

The information contained herein is subject to change without notice and is not warranted to be error-free. If you find any errors, please report them to us in writing.

If this is software, software documentation, data (as defined in the Federal Acquisition Regulation), or related documentation that is delivered to the U.S. Government or anyone licensing it on behalf of the U.S. Government, then the following notice is applicable:

U.S. GOVERNMENT END USERS: Oracle programs (including any operating system, integrated software, any programs embedded, installed, or activated on delivered hardware, and modifications of such programs) and Oracle computer documentation or other Oracle data delivered to or accessed by U.S. Government end users are "commercial computer software," "commercial computer software documentation," or "limited rights data" pursuant to the applicable Federal Acquisition Regulation and agency-specific supplemental regulations. As such, the use, reproduction, duplication, release, display, disclosure, modification, preparation of derivative works, and/or adaptation of i) Oracle programs (including any operating system, integrated software, any programs embedded, installed, or activated on delivered hardware, and modifications of such programs), ii) Oracle computer documentation and/or iii) other Oracle data, is subject to the rights and limitations specified in the license contained in the applicable contract. The terms governing the U.S. Government's use of Oracle cloud services are defined by the applicable contract for such services. No other rights are granted to the U.S. Government.

This software or hardware is developed for general use in a variety of information management applications. It is not developed or intended for use in any inherently dangerous applications, including applications that may create a risk of personal injury. If you use this software or hardware in dangerous applications, then you shall be responsible to take all appropriate fail-safe, backup, redundancy, and other measures to ensure its safe use. Oracle Corporation and its affiliates disclaim any liability for any damages caused by use of this software or hardware in dangerous applications.

Oracle®, Java, and MySQL are registered trademarks of Oracle and/or its affiliates. Other names may be trademarks of their respective owners.

Intel and Intel Inside are trademarks or registered trademarks of Intel Corporation. All SPARC trademarks are used under license and are trademarks or registered trademarks of SPARC International, Inc. AMD, Epyc, and the AMD logo are trademarks or registered trademarks of Advanced Micro Devices. UNIX is a registered trademark of The Open Group.

This software or hardware and documentation may provide access to or information about content, products, and services from third parties. Oracle Corporation and its affiliates are not responsible for and expressly disclaim all warranties of any kind with respect to third-party content, products, and services unless otherwise set forth in an applicable agreement between you and Oracle. Oracle Corporation and its affiliates will not be responsible for any loss, costs, or damages incurred due to your access to or use of third-party content, products, or services, except as set forth in an applicable agreement between you and Oracle.

# Contents

## Preface

---

|                             |    |
|-----------------------------|----|
| Documentation accessibility | vi |
| Related resources           | vi |
| Access to Oracle Support    | vi |

## 1 Introduction

---

|  |     |
|--|-----|
| Dossier Report Process                   | 1-1 |
| Configuring Oracle Argus Dossier         | 1-1 |
| Configuring Periodic Data                | 1-1 |
| Configuring Periodic Report Templates    | 1-1 |
| Creating and Reviewing Report Content    | 1-2 |
| Approving Content and Publishing Reports | 1-2 |

## 2 Processing Dossier Reports

---

|   |      |
|---|------|
| Using Templates                           | 2-1  |
| About the Templates Tab                   | 2-1  |
| Adding a Template                         | 2-4  |
| Modifying an Existing Template            | 2-5  |
| Assigning Template Users                  | 2-5  |
| About the Group Assignment Tab            | 2-8  |
| Group Assignment Tab Fields               | 2-8  |
| Group Assignment Tab Usage Considerations | 2-9  |
| About the Notify Tab                      | 2-9  |
| Notify Tab Fields                         | 2-10 |
| Notify Tab Usage Considerations           | 2-10 |
| About the Owner Tab                       | 2-11 |
| Owner Tab Fields                          | 2-11 |
| Owner Tab Usage Considerations            | 2-12 |
| Printing a Dossier Security List          | 2-13 |
| Accessing the Author Tab                  | 2-14 |
| About the Author Tab                      | 2-15 |

|   |      |
|---|------|
| Author Tab Fields                           | 2-16 |
| Author Tab Usage Considerations             | 2-18 |
| Role Security Requirements                  | 2-22 |
| Providing Report Content                    | 2-23 |
| Author Window Fields                        | 2-24 |
| Author Window Usage Considerations          | 2-24 |
| Entering Report Content                     | 2-26 |
| Setting Ready for Review                    | 2-26 |
| Editing a Template Manually                 | 2-27 |
| About the Check Out Dialog Box              | 2-27 |
| Usage Considerations                        | 2-28 |
| Undoing a Check Out Operation               | 2-28 |
| Checking In an Edited Template              | 2-30 |
| About the Check In Dialog Box               | 2-30 |
| Usage Considerations                        | 2-31 |
| Retaining Template Versions                 | 2-31 |
| About the Template History and Comments Log | 2-32 |
| Fields and Control                          | 2-32 |
| Usage Considerations                        | 2-32 |
| Setting Ready for Build                     | 2-33 |
| Building a Dossier Report                   | 2-33 |
| About the Arrange Tab                       | 2-34 |
| Arrange Tab Fields and Controls             | 2-34 |
| Arrange Tab Usage Considerations            | 2-35 |
| Arranging the Sections of a Report          | 2-36 |
| Removing a Section from a Report            | 2-36 |
| Reinstating a Section in a Report           | 2-37 |
| Creating a Table of Contents                | 2-37 |
| Generating a Dossier Report                 | 2-38 |
| Report Generation Usage Considerations      | 2-39 |
| Publishing a Dossier Report                 | 2-42 |
| Publish Usage Considerations                | 2-43 |

### 3 Writing Template Scripts

---

|   |     |
|---|-----|
| About Templates                         | 3-1 |
| Using Microsoft Word to Write Templates | 3-1 |
| Using the Template Scripting Language   | 3-3 |
| Template Scripting Elements             | 3-3 |
| Using Implicit Variables                | 3-3 |
| Rules for Using Implicit Variable       | 3-3 |

|  |      |
|--|------|
| Creating and Using Custom Variables    | 3-4  |
| Pre-defined Periodic Report Variables  | 3-5  |
| Using Explicit Variables               | 3-13 |
| Using Declared Variables <var>         | 3-13 |
| Using Author Questions <q>             | 3-13 |
| Using Operands                         | 3-14 |
| Using the <if> <then> <else> Statement | 3-14 |
| Using Nested Questions                 | 3-19 |
| Template Writing Quick Reference       | 3-20 |

# Preface

This preface contains the following sections:

- [Documentation accessibility](#)
- [Related resources](#)
- [Access to Oracle Support](#)

## Documentation accessibility

For information about Oracle's commitment to accessibility, visit the Oracle Accessibility Program website at <http://www.oracle.com/pls/topic/lookup?ctx=acc&id=docacc>.

## Related resources

For information about Oracle Argus patches, see [My Oracle Support](#).

All documentation and other supporting materials are available on the [Oracle Help Center](#).

## Access to Oracle Support

To receive support assistance, determine whether your organization is a cloud or on-premises customer. If you're not sure, use Support Cloud.

### **Cloud customers receive support assistance through Support Cloud**

Oracle customers that have purchased support have access to electronic support through Support Cloud.

Contact our Oracle Customer Support Services team by logging requests in one of the following locations:

- English interface of Oracle Health Sciences Customer Support Portal (<https://hsgbu.custhelp.com/>)
- Japanese interface of Oracle Health Sciences Customer Support Portal (<https://hsgbu-jp.custhelp.com/>)

You can also call our 24x7 help desk. For information, visit <http://www.oracle.com/us/support/contact/health-sciences-cloud-support/index.html> or visit <http://www.oracle.com/pls/topic/lookup?ctx=acc&id=trs> if you are hearing impaired.

**On-premises customers receive support assistance through My Oracle Support**

Oracle customers that have purchased support have access to electronic support through My Oracle Support. For information, visit <http://www.oracle.com/pls/topic/lookup?ctx=acc&id=info> or visit <http://www.oracle.com/pls/topic/lookup?ctx=acc&id=trs> if you are hearing impaired.

# 1

## Introduction

Oracle Argus Dossier is a tool that works within the Oracle Argus Safety application and enables you to generate periodic reports.

For more information, see:

- [Dossier Report Process](#)

## Dossier Report Process

The complete Dossier report process has several steps:

- [Configuring Oracle Argus Dossier](#)
- [Creating and Reviewing Report Content](#)
- [Approving Content and Publishing Reports](#)

## Configuring Oracle Argus Dossier

The task of configuring Oracle Argus Dossier is performed by the administrator. It is the first step in the Dossier report process and is initiated as soon as the administrator determines there is a need for a specific report. Normally, this will be as soon as a product is approved for market. Oracle Argus Dossier configuration includes the following:

- [Configuring Periodic Data](#)
- [Configuring Periodic Report Templates](#)

## Configuring Periodic Data

Refer to the *Oracle Argus Safety User's Guide* for details about configuring Periodic Reports.

## Configuring Periodic Report Templates

The administrator configures the report templates as follows:

- Writes the template scripts defining the report content
- Determines whether the report template contains one or more sections
- Uses authoring tools to verify the content of the template
- Assigns each section of the template to one or more groups for the authoring cycle
- Assigns the groups that are notified when Oracle Argus Dossier authoring or reviewing is required.
- Assigns groups as the template owner (who can perform any action and can publish the report)

After the report templates are configured, the system does the following:



- Sends an e-mail message to the assigned authors and reviewers on the date the report is to be generated (scheduled date and time)
- Generates the FINAL periodic report and creates an entry on the Reports > Periodic Reports section of the Oracle Argus Safety application
- Places an entry on the Worklist > Reports section of the Oracle Argus Safety application for the assigned users (in any role)
- Notifies the administrator and users that the periodic report has been generated and is ready for review

## Creating and Reviewing Report Content

Once a report has been generated and the users have been notified of its existence, the assigned authors and reviewers perform their associated tasks. You can check out documents and edit them manually using the Microsoft Word application on your local desktop. Once the document has been edited, you can check the document in and mark it as *Ready for Build*.

The task of the reviewers is to verify that the report content is correct and complete. Once a report is complete, the reviewer submits it for approval and final build.

## Approving Content and Publishing Reports

Once all the sections of a report are marked as *Ready for Review*, you can generate a merged PDF for the final report. Once the PDF is created, users can view it.

# 2

## Processing Dossier Reports

Generating Oracle Argus Dossier reports requires the use of templates. A *template* is a pre-defined report format created in Microsoft Word. Before you can begin using templates to create reports, you (or someone with script writing or programming background) must create the template scripts. Information about writing template scripts is in [Writing Template Scripts](#).

For more information, see:

- [Using Templates](#)
- [Assigning Template Users](#)
- [Accessing the Author Tab](#)
- [Providing Report Content](#)
- [Setting Ready for Build](#)
- [Building a Dossier Report](#)
- [Creating a Table of Contents](#)
- [Generating a Dossier Report](#)
- [Publishing a Dossier Report](#)

## Using Templates

When using templates, be aware of the following:

- The application parses template elements sequentially. This prevents elements from being used before they are declared.
- The order in which the templates appear on the template tab is the order in which they will appear on the generated report. If you need the sections in a different order, use the **Up** and **Down** keys to change their position.

You should assign users (authors, reviewers, and owner) to each template section.

For more information, see:

- [About the Templates Tab](#)
- [Adding a Template](#)
- [Modifying an Existing Template](#)

## About the Templates Tab

The Oracle Argus Dossier **Templates** tab enables you to access report templates used to generate periodic reports (CTPR, ICH PSUR, IND, NDA). The following is an illustration of the **Templates** tab.

The screenshot shows the 'Clinical Trial Periodic Report' application. At the top, there's a header with 'Report Name' (TEST 06 - Studies, Country active, UD tab) and 'Report Category' (CTPR). Below this is a navigation bar with tabs: 'Subject of Report', 'Product Selection', 'License/Study', 'Inclusion Criteria', 'Line Listing', 'Grouping', 'Summary Tabulations', 'UD Summaries', 'Scheduling', 'Security', and 'Templates'. The 'Templates' tab is active, showing a table with columns: '#', 'Section', 'Description', and 'Attachment File Name'. There's one row with values: '1.', '1', '2', and 'Interchange Review Comments Chapter 4 and 5.docx'. Below the table are buttons for 'Add', 'Delete', 'Assign', 'Up', 'Down', and 'Print'. At the bottom, there's a 'Header / Footer' section with a checkbox for 'Include Header and Footer', a section for 'Portrait Template' and 'Landscape Template' with 'Attach' buttons, and another checkbox for 'Include Page Numbering' with radio buttons for 'Header Left', 'Header Center', 'Header Right', 'Footer Left', 'Footer Center', and 'Footer Right'. 'OK' and 'Cancel' buttons are at the very bottom.

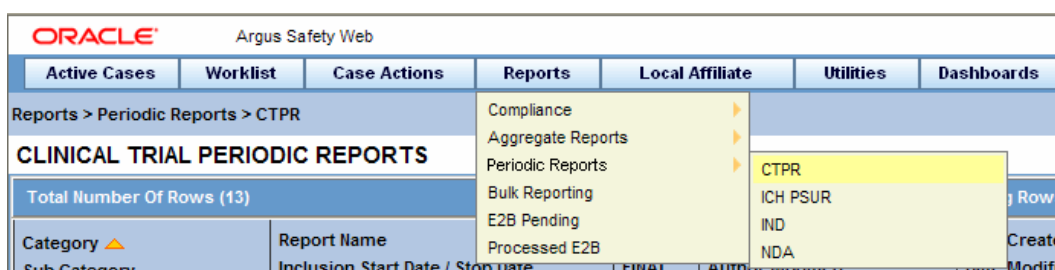
The following table lists and describes the fields and controls on this tab.

| Field/Control         | Description   |
|-----------------------|---|
| Templates             | Enables you to add, modify, delete, assign and arrange the sections in your templates.                                |
| Add                   | Click <b>Add</b> to add a new section to the report template.   |
| Delete                | Click <b>Delete</b> to delete a section of a template.  |
| Assign                | Click <b>Assign</b> to choose who can access a template.  |
| Up                    | Click <b>Up</b> to move the template section up one level.  |
| Down                  | Click <b>Down</b> to move the template section down a level.  |
| Print                 | Click <b>Print</b> to print the report configuration.   |
| #                     | This column contains the template number. This number changes as you move or change the order of the templates.       |
| Section               | This column contains the name of the template.  |
| Description           | This column contains a description of the section.  |
| Attachment File Name  | This column contains the name of the template file.   |
| Modify                | Click <b>Modify</b> to change a template document.  |
| Attach                | Click <b>Attach</b> to attach a new template document. Once the document is attached, this changes to <b>Modify</b> . |
| Header/Footer         | This section enables you to attach header/footer information to the template.   |
| Include Header/Footer | Click this checkbox if you want to include header/footer information from a specific Word document in your template.  |

| Field/Control          | Description   |
|------------------------|---|
| Portrait Template      | Enables you to use header/footer information from a document in portrait orientation in your template               |
| Landscape Template     | Enables you to use header/footer information from a document in landscape orientation in your template.             |
| Attach                 | Enables you to attach a Microsoft Word document to a template.  |
| Include Page Numbering | Enables you to specify whether or not you want page numbering in the template and the location of the page numbers. |
| Header Left            | Click this option to place the page number on the left side of the header.  |
| Header Center          | Click this option to place the page number in the center of the header.   |
| Header Right           | Click this option to place the page number on the right of the header.  |
| Footer Left            | Click this option to place the page number on the left side of the footer.  |
| Footer Center          | Click this option to place the page number in the center of the footer.   |
| Footer Right           | Click this option to place the page number on the right of the footer.  |
| OK                     | Click <b>OK</b> update the template page.   |
| Cancel                 | Click <b>Cancel</b> to exit from the template page without saving.  |

### To access the template tab:

1. Select **Reports > Periodic Reports > <Report Type>**.



2. When the system opens the page for the report type you selected:
  - a. Locate the report and click the row to highlight it.
  - b. Perform one of the following:
    - Click **Modify**.
    - Click **New Report**.

| Category | Report Name                                   | Inclusion Start Date / Stop Date | DRAFT<br>FINAL | Author Created<br>Author Modified | Date Created<br>Date Modified | Justification |
|----------|---|----------------------------------|----------------|-----------------------------------|-------------------------------|---------------|
| CTPR     | TEST 09 - Creation Date, Data Elem, Dict      | 01-JAN-1996 / 31-DEC-1996        | DRAFT          | admin1<br>abhj                    | 23-NOV-2009                   | Not specified |
| CTPR     | TEST 07 - Cumulative and Event Summary        | 01-FEB-1997 / 30-APR-1997        | DRAFT          | admin1<br>abhj                    | 23-NOV-2009                   | Not specified |
| CTPR     | TEST 05 - Index of Cases, Tab, Death          | 01-DEC-1997 / 31-DEC-1997        | DRAFT          | admin1<br>abhj                    | 23-NOV-2009                   | Not specified |
| CTPR     | CTPR DSR Test                                 | 01-FEB-1997 / 30-APR-1997        | FINAL          | geetkac<br>User A                 | 31-MAR-2009<br>01-APR-2009    | Not specified |
| CTPR     | TEST 08 - Unsub report, Cloms, DCR            | 01-SEP-1997 / 30-NOV-1997        | DRAFT          | admin1<br>abhj                    | 23-NOV-2009                   | Not specified |
| CTPR     | Copy of Copy of TEST 09 - Creation Date, D... | 31-MAR-2009 / 31-MAR-2009        | DRAFT          | akashd<br>akashd                  | 01-APR-2009<br>01-APR-2009    | Not specified |
| CTPR     | TEST 06 - Studies, Country active, UD tab     | 01-JAN-1997 / 31-DEC-1997        | DRAFT          | admin1<br>abhj                    | 23-NOV-2009                   | Not specified |
| CTPR     | TEST 02 - Data Sheet, Adv Condition           | 01-JAN-1997 / 31-MAR-1997        | DRAFT          | admin1<br>abhj                    | 23-NOV-2009                   | Not specified |
| CTPR     | TEST 01 - License Selection, DS, RI Type      | 01-JAN-1997 / 31-MAR-1997        | DRAFT          | admin1<br>abhj                    | 23-NOV-2009                   | Not specified |
| CTPR     | TEST 10 - Age Group, CMN Profile              |                                  | DRAFT          | admin1                            |                               |               |

- When the application opens the report dialog box, click the **Templates** tab.  
The system opens the Templates tab.

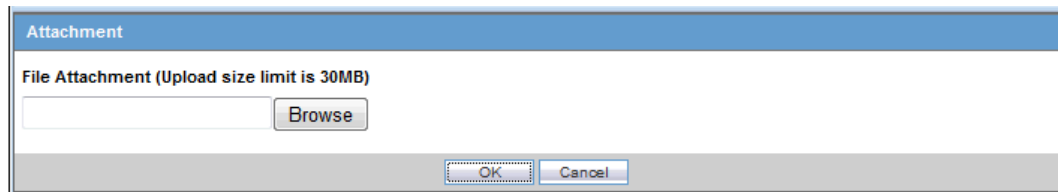
## Adding a Template

A *template* can consist of single or multiple sections. Multiple sections enable you to assign different authors and reviewers for each section. When it uploads the template, the application does the following:

- Opens a status dialog box to show the executing process.
- Scans the template for scripting instructions, validates the instructions, and extracts the information to be stored for later use.

### To add a template:

- Select **Reports > Periodic Reports > <Report Type>**.
- When the system opens the page for the report type you selected:
  - Locate the report and click the row to highlight it.
  - Click **Modify** or **New**.
- When the application opens the report dialog box, click the **Templates** tab.
- When the system opens the **Templates** tab, click **Add**.
- When the application adds a new row in the template section:
  - Enter the section name in the text field in the **Section** column.
  - Enter a description of the section in the text field in the **Description** column.
  - Click **Attach**.
- When the system opens the Attachment dialog box:



- a. Type the template file path name OR click **Browse** to locate and select the template file (DOC or DOCX format) to attach.
- b. Click **OK**.

## Modifying an Existing Template

When you modify a template, the application overwrites the old version of the template with the new version.

1. Select **Reports > Periodic Reports > <Report Type>**.
2. When the system opens the page for the report type you selected:
  - a. Locate the report and click the row to highlight it.
  - b. Click **Modify**.
3. When the application opens the report dialog box, click the **Templates** tab.
4. When the system opens the **Templates** tab, select the appropriate row you wish to overwrite and click **Modify**.
5. When the system opens the Attachment message dialog box, choose one of the following:
  - a. Click **Yes** to continue modifying the template.
  - b. Click **No** to abort the modify operation.
6. When the system opens the Attachment dialog box, enter the attachment name in the **File Attachment** field and click **OK**.

The system uploads the new template.

## Assigning Template Users

Oracle Argus Dossier enables you to assign specific template access levels to template users. Template users can be:

**Author:** The template *author* can answer any questions and create a draft or final version of a template section. There can be multiple authors for any given section of a template.

**Reviewer:** The template *reviewer* **does not** have access to authoring functions, but can manually edit individual sections of a template after the author has marked the template *Ready for Review*. Multiple reviewers can be assigned to any section of a template.

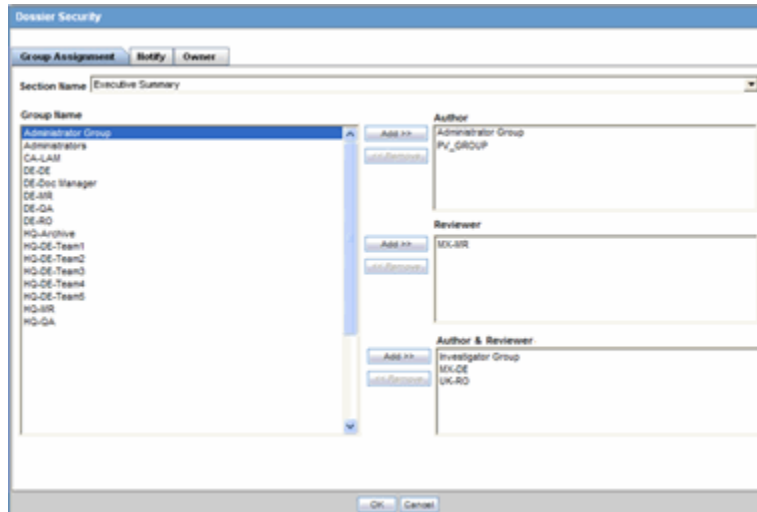
**Author & Reviewer:** The template *author & reviewer* has access to both authoring and review functions.

**Owner:** A template can be owned by one or more user groups. Users assigned to these groups can:

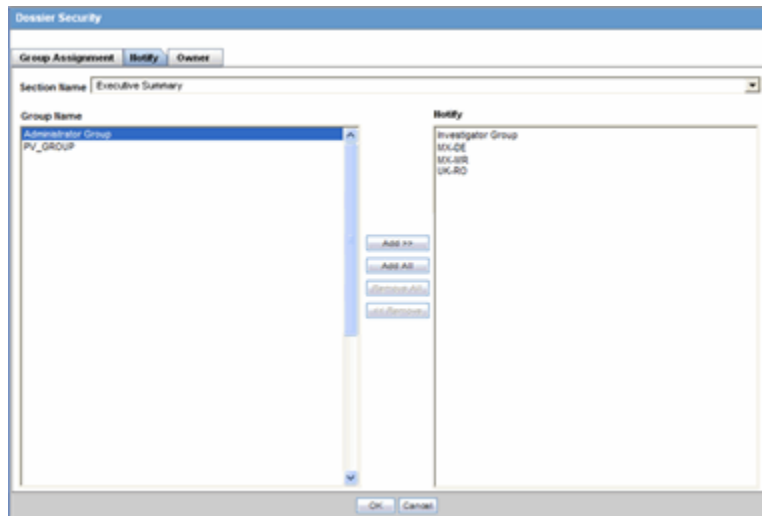
- Access all authoring and reviewing functions
- Assign user access rights as defined for such roles
- Build and publish reports

**To assign group rights:**

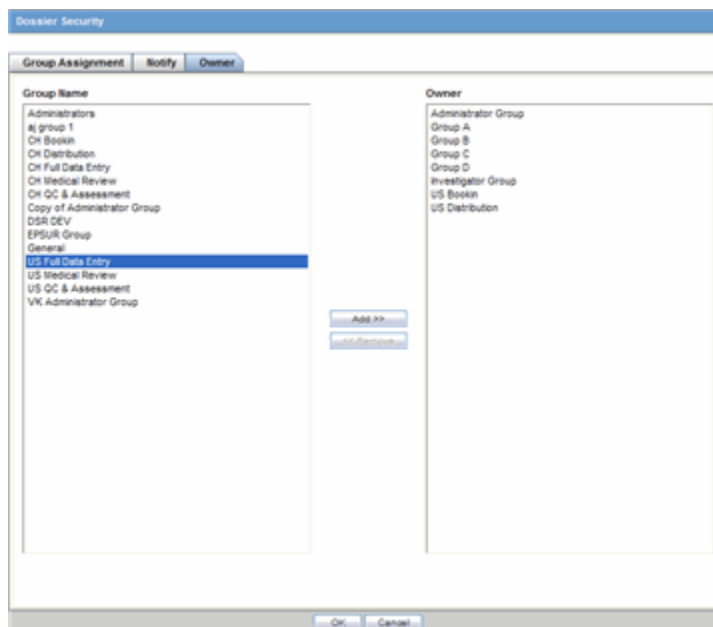
1. Select **Reports > Periodic Reports > <Report Type>**.
2. When the system opens the page for the report type you selected:
  - a. Locate the report and click the row to highlight it.
  - b. Click **Modify**.
3. When the application opens the report dialog box, click the **Templates** tab.
4. When the system opens the **Templates** tab, click **Assign**.
5. When the application opens the **Dossier Security** dialog box, click the **Group Assignments** tab:



- a. Select one or more **authors** from the **Group Name** list, and click **Add** to add the names to the list of authors in the **Authors** list.
  - b. Select one or more **reviewers** from the **Group Name** list, and click **Add** to add the names to the list of reviewers in the **Reviewers** list.
  - c. Select one or more **author/reviewers** from the **Group Name** list, and click **Add** to add the names to the list of reviewers in the **Author & Reviewers** list.
  - d. Click the **Notify** tab.
6. When the system opens the **Notify** tab, choose one of the following:



- Select one or more groups from the **Group Name** list, and click **Add** to add the names to the **Notify** list.
  - Click **Add All** to add all the names in the **Group Name** list to the **Notify** list.
7. Click the **Owner** tab.



8. When the system opens the **Owner** tab, select one or more groups from the **Group Name** drop-down list and click **Add** to add the selected group to the **Owner** list.
9. Click **OK** to save the assignments information.

Click **OK** to save your changes, then click the **Print** icon to view and print a PDF document listing associated assignments. The system only prints saved entries.

See the following sections for information about the individual tabs and for more information about printing the security assignments:



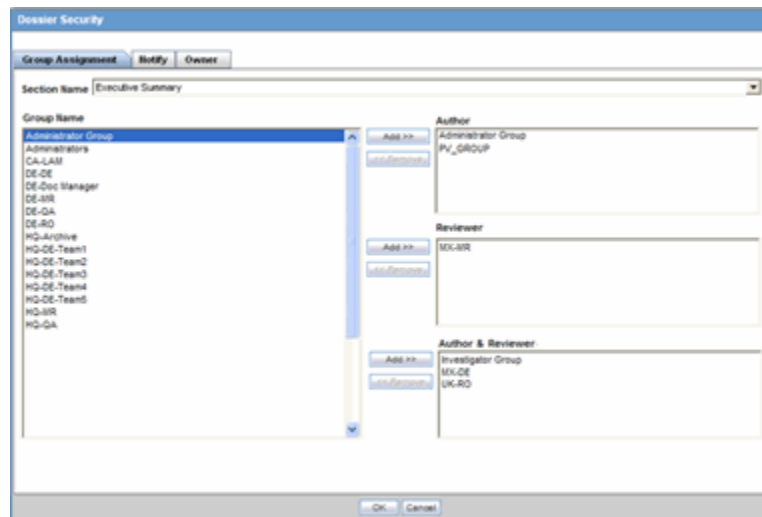
- [About the Group Assignment Tab](#)
- [About the Notify Tab](#)
- [About the Owner Tab](#)
- [Printing a Dossier Security List](#)

## About the Group Assignment Tab

The **Group Assignment** tab enables you to assign particular roles to users. Any user who **is not** assigned a user role, cannot modify a template or a report. You can assign any of the following roles:

- Author
- Reviewer
- Author & Reviewer

The following is an illustration of the **Group Assignment** tab.



For more information, see:

- [Group Assignment Tab Fields](#)
- [Group Assignment Tab Usage Considerations](#)

## Group Assignment Tab Fields

The following table lists and describes the fields on the **Group Assignment** tab.

| Field/Control | Description   |
|---------------|---|
| Section Name  | Enables you to select the template section name for privileges assignment     |
| Group Name    | Enables you to select one or more user groups to be authors and/or reviewers. |

| Field/Control     | Description   |
|-------------------|---|
| Author            | Enables you to assign the Author role to one or more groups selected in the Group Name list.  |
| Reviewer          | Enables you to assign the Reviewer role to one or more groups selected in the Group Name list.  |
| Author & Reviewer | Enables you to assign the Author & Reviewer role to one or more groups selected in the Group Name list.   |
| Add button        | Click <b>Add</b> to add a selected group or groups to the <b>Author</b> , <b>Reviewer</b> , or <b>Author &amp; Reviewer</b> lists.  |
| Remove button     | Click <b>Remove</b> to move one or more selected groups from the <b>Author</b> , <b>Reviewer</b> , or <b>Author &amp; Reviewer</b> lists and return them to the <b>Group Name</b> list. |
| OK button         | Click <b>OK</b> to save the assignment information.   |
| Cancel button     | Click <b>Cancel</b> to abort the assignment operation.  |

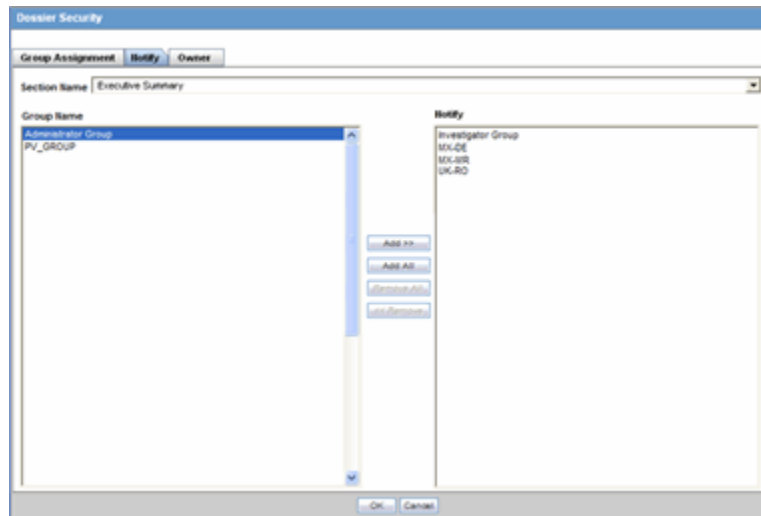
## Group Assignment Tab Usage Considerations

When using the **Group Assignment** tab be aware of the following:

- The default tab is the **Group Assignment** tab.
- The **Section Name** drop down is blank by default.
- The **Section Name** contains a list of sections as configured in the periodic report configuration screen.
- You can add group(s) to each of the three user role lists.
  - Author
  - Reviewer
  - Author & Reviewer
- You **cannot** assign the same group to more than one user role. In other words, you can assign Group A to either the Author or the Author & Reviewer user role, but you cannot assign it to both.
  - The user can select a group or groups in the Group Name multi-select box (on left) and grant that/those groups privileges by clicking the **Add** button.
  - The user can select a group or groups in any user role list and click **Remove** to remove the users.
    - \* The system returns the names of the removed groups to the **Group Name** list.
- The groups are listed alphabetically in ascending order in all multi-select boxes.
- When you move to another tab, the system temporarily saves your current choices.
- You must click **OK** to save your changes permanently.

## About the Notify Tab

The **Notify** tab enables you select users to receive e-mail notification of new or modified assignments. The following is an illustration of the **Notify** tab.



For more information, see:

- [Notify Tab Fields](#)
- [Notify Tab Usage Considerations](#)

## Notify Tab Fields

The following table lists and describes the fields on the **Notify** tab.

| Field             | Description  |
|-------------------|--|
| Section Name      | Enables you to select the template section name for assignment notification.                                   |
| Group Name        | Enables you to select one or more user groups to notify of new assignments or changes to existing assignments. |
| Add button        | Enables you to add one or more groups selected in the <b>Group Name</b> list to the <b>Notify</b> list.        |
| Add All button    | Enables you to add all groups in the <b>Group Name</b> list to the <b>Notify</b> list.                         |
| Notify            | Enables you to notify the users in this list of new assignments or changes to existing assignments.            |
| Remove button     | Enables you to remove one or more selected users from the <b>Notify</b> list.                                  |
| Remove All button | Enables you to remove all users from the <b>Notify</b> list.   |

## Notify Tab Usage Considerations

When using the **Notify** tab, be aware of the following:

- The **Section Name** drop-down contains a list of template sections. If you do not select a section, the **Add/Remove** buttons are disabled.
- Select one or more groups from the **Group Name** list to include the users in the group in the notification list.

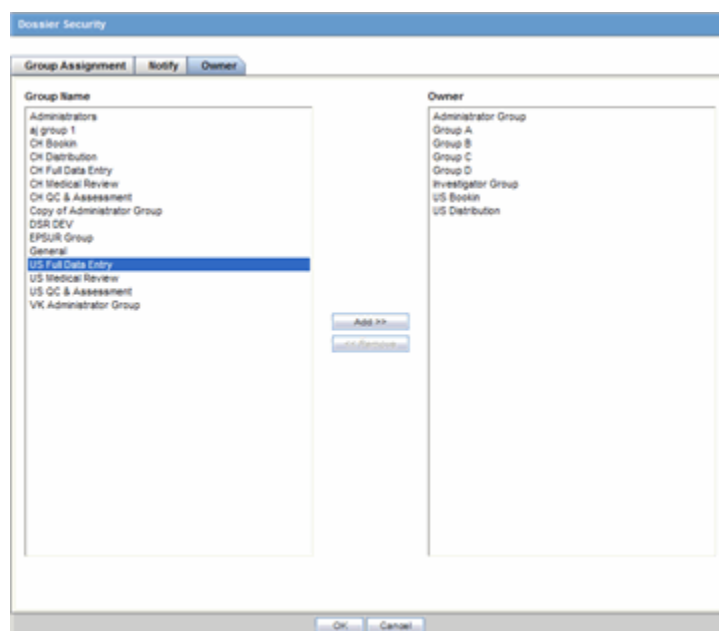
- Available groups have been granted access from the **Group Assignment** tab.
- When you click **Add**, the system places the selected group or groups to be notified in the Notify multi-select box (on right).
- Select one or more groups in the **Notify** list and click **Remove** to remove them from the notification list.
- The application removes the selected groups from the **Notify** list and returns them to the **Group Name** list.

## About the Owner Tab

The **Owner** tab enables you to designate one or more groups to own an entire periodic report. Owner groups can do the following:

- Access all authoring and reviewing functions
- Assign user access rights as defined for such roles
- Build and publish reports

The following is an illustration of the **Owner** tab.



For more information, see:

- [Owner Tab Fields](#)
- [Owner Tab Usage Considerations](#)

## Owner Tab Fields

The following tables lists and describes the fields on the **Owner** tab.

| Field         | Description   |
|---------------|---|
| Group Name    | Contains a list of user groups who can be designated as owners of a report.   |
| Add button    | Enables you to designate groups selected in the <b>Group Name</b> pane as owners of a template by moving the group name from the <b>Group Name</b> pane to the <b>Owner</b> pane. |
| Remove button | Enables you to remove a selected group from the <b>Owner</b> pane and return it to the <b>Group Name</b> pane.  |
| Owner         | Contains a list of user groups who are designated as owners of a report.  |

## Owner Tab Usage Considerations

When using the **Owner** tab, be aware of the following:

- All active groups that have been granted access privileges from the **Group Assignment** tab are included in the **Owner** drop-down list.
- You can select one or more groups as the owner of the entire Periodic Report.
  - The owner can perform the generate and build operations.
  - The owner can be both the author and the reviewer and is assigned the access rights defined for such roles.
- You must select at least one group to be the owner of a Periodic Report.
  - If you fail to select a group to be the owner of the Periodic Report, the system presents the following message:  
`You must assign a Dossier owner group.`
  - Click **OK**.
  - If you remove all the owner groups, the system presents the following message:  
`You must assign a Dossier owner group.`
- AG Service sends e-mail notifications to all Authors, Owners, and Reviewers, if you have selected them for notification when a specific period report is generated or regenerated when the following occur:
  - Report is generated
  - Report is ready to build
  - Build is completed successfully
  - Build is failed in between processing
- The system sends an e-mail notification to the users in the groups listed in the **Notify** list. The application sends e-mail notifications to users when the following occur:
  - A Periodic Report is generated:
  - The author has checked the **Ready for Review** checkbox.
    - \* The application sends an e-mail notification to the appropriate reviewers.
    - \* If there are multiple reviewers groups specified for a given section, the application sends each reviewer an e-mail notification.

- The email notification includes the following:
  - Subject - Oracle Argus Dossier Section for <Periodic Report Name> ready for Review
  - Section Name & Description - The name and description of the completed section.
  - Report Name - The name of the report this section has been completed for.
- E-Mail Layout  
Subject:  
<Periodic Report> Section for <Periodic Report Name> is ready for Review  
**Body:** (the following four fields are taken directly from the Reports - Periodic Reports dialog)  
Trade Name: <Product Name(s)> Destination: <Submission Destination>  
Description: <Description>  
Due Date: <Due Date of Periodic Report>  
The authoring of the <section name> <Section Description> for the <periodic report> "<PSUR Name>" has been completed and is ready for your review. Please log into Oracle Argus Safety to review your section utilizing the menu option "Reports > Periodic Reports" and selecting the "View Argus Dossier" option for the correct report.

## Printing a Dossier Security List

On the **Templates** tab, you can click **Print** to print a list of template assignments. This is called a **Dossier Security** report but may also be called a **template assignment list**. When you click **Print**, the application presents the following message:

To print the current Dossier security settings, the system must save the periodic report configuration.

1. Go to the **Template** tab.
2. Select the appropriate template from the template list and click **Print**.
3. Click **OK** when the system displays the following message:

To print the current Dossier security settings, the system must save the periodic report configuration.

4. The system saves the security settings and prints the Dossier Security report shown in the following illustration.

The screenshot shows a report titled "Dossier Security" with a save date and time of "11-MAR-2009 00:01 GMT -7". It contains three sections:

**S3 Template Assignments**

| Group Name          | Role             | Notify |
|---------------------|------------------|--------|
| Administrator Group | Author           | No     |
| Full Access Group1  | Reviewer         | No     |
| General             | Reviewer         | Yes    |
| LAM Group for US    | Reviewer         | Yes    |
| LAM Group PS        | Reviewer         | No     |
| Test Group          | Author, Reviewer | No     |

**S1 Template Assignments**

| Group Name          | Role             | Notify |
|---------------------|------------------|--------|
| Administrator Group | Author           | No     |
| Full Access Group   | Reviewer         | No     |
| Full Access Group1  | Reviewer         | No     |
| LAM Group for US    | Reviewer         | Yes    |
| LAM Group PS        | Author, Reviewer | Yes    |
| Test Group          | Author, Reviewer | No     |

**Report Template Owner**

| Group Name          |
|---------------------|
| Administrator Group |
| Full Access Group   |

At the bottom of the report, it says "Will Gordon" and "Page 1 of 1".

The following table lists and describes the elements in the **Dossier Security** report.

| Report Section        | Description   |
|-----------------------|---|
| Report Title          | The name of the report is always <b>Dossier Security</b> .  |
| Save Date and Time    | <p>The date and time the template and security assignments were last saved.</p> <p>The date and time are recorded in GMT (Greenwich Mean Time). The date is actually local time with the GMT offset listed. It is NOT printed in GMT. GMT is only listed to display the offset for GMT.</p> <p>The format is as follows:<br/>"Last saved <i>dd-MMM-yyyy HH:mm GMT -n</i>"</p> <p>For example:<br/>Last saved 21 JUL 2008 16:11 GMT -8</p> |
| Template Name         | <p>The name of the template.</p> <p>Each template is listed separately</p>  |
| Report Details        | <p>This section contains three columns that contain information about the assigned users:</p> <p>Group Name - The name of the user group sorted alphabetically in ascending order.</p> <p>Role - The role assigned to the group. A group can be assigned multiple roles.</p> <p>Notify - Indicates whether the group should be notified.</p>  |
| Report Template Owner | The owner or owners of the periodic report.   |

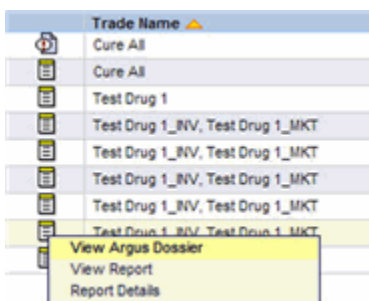
## Accessing the Author Tab

Use the following procedure to access the **Author** tab:

1. Select **Reports > Compliance > Periodic** to display a list of periodic reports.

| Trade Name                      | Destination          | Description   | Due Date    | Status    |
|---------------------------------|----------------------|---|-------------|-----------|
| Cure All                        | (No Specific Agency) | PSUR TEMPLATE TEST Cure All Report First 6 months of 2002 | 11-MAR-2009 | Generated |
| Cure All                        | (No Specific Agency) | PSUR TEMPLATE TEST Cure All Report First 6 months of 2002 | 22-JUL-2009 | Generated |
| Test Drug 1                     | [HA] US (FDA)        | PaDER Template Test                                       | 13-MAY-2009 | Generated |
| Test Drug 1_IV, Test Drug 1_MKT | [HA] US (FDA)        | WB PaDER Template Test                                    | 10-MAY-2009 | Generated |
| Test Drug 1_IV, Test Drug 1_MKT | [HA] US (FDA)        | WB PaDER Template Test                                    | 25-MAY-2009 | Generated |
| Test Drug 1_IV, Test Drug 1_MKT | [HA] US (FDA)        | WB PaDER Template Test                                    | 10-MAY-2009 | Generated |
| Test Drug 1_IV, Test Drug 1_MKT | [HA] US (FDA)        | WB PaDER Template Test                                    | 23-MAY-2009 | Generated |
| Test Drug 1_IV, Test Drug 1_MKT | [HA] US (FDA)        | WB PaDER Template Test                                    | 10-MAY-2009 | Generated |
| Test Drug 1_IV, Test Drug 1_MKT | [HA] US (FDA)        | WB PaDER Template Test                                    | 22-MAY-2009 | Generated |

- When the application opens the list of periodic reports, locate the appropriate report and click its associated report icon.
- Select **View Argus Dossier** from the pop-up menu.



- The system opens the **Author** tab for the selected report.

For more information, see:

- [About the Author Tab](#)

## About the Author Tab

All the tasks required to generate a Dossier report can be performed from the **Author** tab in the View *<template name>* Template. Generating a Dossier report requires you to do the following:

- Provide report content
- Review the report
- Approve the report
- Publish the report

The following is an illustration of the **Author** tab.



For more information, see:

- [Author Tab Fields](#)
- [Author Tab Usage Considerations](#)
- [Role Security Requirements](#)

## Author Tab Fields

The following table lists and describes the fields and controls on the **Author** tab.

| Field/Control        | Description   |
|----------------------|---|
| Periodic Report Name | Displays the periodic report name as configured in the <b>Subject</b> tab.  |
| Start Date           | Displays the start date of the periodic reporting period from report configuration.   |
| End Date             | Displays the end date of the periodic reporting period from report configuration.   |
| Generated Date       | Displays the date the report was generated.   |
| # of Cases           | Displays the number of cases that have been included in the PSUR report.  |
| Agency               | Displays name of the agency.  |
| IBD                  | Displays the IBD name of the configured product.  |
| Templates Section    | This section displays a list of all PSUR template section names.<br><br>Click the template name to view the unprocessed template DOC or DOCX file in a separate window. |

| Field/Control                      | Description   |
|------------------------------------|---|
| Collapse/Expand icons              | Click the <b>Collapse</b> icon to collapse the <b>Templates</b> section.<br>Click the <b>Expand</b> icon to expand the <b>Templates</b> section.  |
| Section                            | Displays the names of the sections included in the template.  |
| Description                        | Display a description of the section contents.  |
| Author button                      | Click <b>Author</b> to perform report-related tasks based on your assigned user role.   |
| Ready for Review                   | Displays if the section of the template is ready to review.   |
| Ready for Build                    | Displays if the section of the template is ready to generate.   |
| Check Out Button / Check In Button | Click <b>Check In</b> to check a template section in. This button displays only if a section has been checked out.<br>Click <b>Check Out</b> to check out a template section. When you click <b>Check Out</b> the system displays the <b>Check Out</b> screen. This button displays only if the authoring task has been successfully completed. |
| Comments                           | Enables you to enter comments regarding the template.<br>Click the <b>Zoom</b> icon to view all user comments.  |
| Generated Reports                  | Provides a list of generated reports.   |
| Collapse/Expand icons              | Click the <b>Collapse</b> icon to collapse the <b>Generated Reports</b> section.<br>Click the <b>Expand</b> icon to expand the <b>Generated Reports</b> section.  |
| Section                            | Provides a link to the unprocessed template file.   |
| Type                               | Identifies the type of report the system generated.   |
| Additional Content                 | Displays any additional content of the user has added content.  |
| Collapse/Expand icons              | Enables you to collapse or expand the <b>Additional Contents</b> section.   |
| Add                                | Enables you to add additional content to the report.  |
| Delete                             | Enables you to delete any uploaded additional content.  |
| Content                            | File name of the attached content.  |
| Description                        | This is the additional content Description.   |
| Header and Footer                  | Enables the users to view the header and footer files as they appear on the pages that follow.  |
| Collapse/Expand icons              | Displays any additional content of the user has added content.  |
| Layout                             | Indicates whether the document is in portrait or landscape orientation.   |
| File                               | The name of the current file as a link. When you click this link the system opens the current header/footer file.   |
| Check Out/Check In                 | Enables you to check out a file for modification and check it back in.<br>Check out and check in are for the user of owners and reviewers.  |
| Ready for Build                    | Indicates whether the report is ready to build.   |
| Draft                              | Generates the draft header footer template in PDF format.   |

---

| Field/Control | Description                                      |
|---------------|--|
| Comments      | Enables the user to enter any relevant comments. |
| Close         | Closes the active window.                        |

---

## Author Tab Usage Considerations

When using the **Author** tab, consider the following:

- The system disables the **Generation Status** button until you initiate the report build process.
- The screen displays all periodic report configuration elements in sections on the tab.
  - **Templates Section**

This section lists all sections of the template as configured in previous steps

The **Template** name is a hyperlink. When you click the template name, the application opens the raw template from the database.

This section displays all the pre configured templates you added when you created the report.

The templates are listed in the order they were in when the report was created.

Click the report section link to view the template file.

The application displays a minimum of six rows. If there are more rows, a scroll bar is available. The scroll bars appears as necessary
  - **Generated Reports Section**

The application displays the report sections ascending order by **Type** and then by **Section**.

Click the report name to view the latest version of a report. The system displays the report (in PDF format) in a separate window.

Click the report section link to view the section report.

The system displays a minimum of six (6) rows. If there are more than six (6) rows, the system displays a scroll bar.

Generated report types are: PSUR, CTPR, NDA, and IND. The following table lists the report names for each report type.

| Report Type | Report Names  |
|-------------|---|
| PSUR        | Report Configuration<br>Line Listing<br>Index of Cases in Line Listing<br>Summary of Cases missing assessments<br>Line Listing Tabulation<br>Summary of Unlocked Cases<br>CIOMS reports<br>Cumulative Summary<br>FDA - Adverse Event Summary<br>FDA - Domestic Consumer Report<br>FDA - MedWatch forms<br>CDA or CL based on cases in Line Listing (*)<br>CDA based on all cases (*)<br>CDA or CL based on date range   |
| CTPR        | Report Configuration<br>Line Listing<br>Index of Cases in Line Listing<br>Summary of Cases missing assessments<br>Count of Cases per Report Type<br>Event Count per Study Drug (1)<br>Event Count per Study Drug (2)<br>Line Listing Tabulation<br>Summary of Unlocked Cases<br>CIOMS reports<br>Cumulative Summary<br>FDA - Adverse Event Summary<br>FDA - Domestic Consumer Report<br>FDA - MedWatch forms<br>CDA or CL based on cases in Line Listing (*)<br>CDA based on all cases (*)<br>CDA or CL based on date range |
| NDA         | Report Configuration<br>Tab 1: MW or VAERS forms<br>Tab 2: Index of MW or VAERS forms<br>Tab 3 Part 1: Line listing of 15-day reports submitted<br>Tab 3 Part 2: Tabulation by SOC of all events submitted<br>Tab 3 Part 3: Cases sent to FDA under a different NDA<br>Summary of Cases missing assessments<br>Summary of Unlocked Cases<br>List of Nullified 15-day cases<br>Custom Case Summary Tabulation<br>CDA based on cases in Line Listing (*)<br>CDA based on all cases (*)<br>Case Count Summary                  |

| Report Type | Report Names   |
|-------------|--|
| IND         | Report Configuration<br>Line Listing of Cases<br>Line Listing of Death Cases<br>CDA based on cases in Line Listing (*)<br>CDA based on all cases (*) |

- **Additional Content Section**  
You can upload additional information to attach to the report.
  - You can **only** upload the following file types: .PDF, .DOC, and .DOCX.
  - If you try to upload another file type, the system displays the following error message:  
Your file has not been uploaded. File type must be .pdf, .doc, or .docx.
  - When you click **Add**, the system opens an upload pop-up box.
  - You **must** enter a description of the file you are uploading. If you fail to enter a description and click **OK**, the system displays the following error message:  
You must enter a description for the file you are uploading.
  - The maximum size of the uploaded file is 30 MB.

The names in the **Additional Content** section are links. Click the link to open the file.

If you select a row and click **Delete**, the system displays a confirmation dialog box with the following message:

Are you sure you want to delete the highlighted Row.

- Click **Yes** to delete the row.
- Click **No** to dismiss the dialog box without deleting the row.  
The system displays a minimum of four (4) rows in the section. A scroll bar displays if there are more than four (4) rows.

#### General Usage Information

- Click the collapse and expand icons to collapse/expand each section.
- The system highlights a selected row.

An **Author** button is available for each template.

- The system enables the **Author** button to all user roles that have access to Oracle Argus Dossier.
- Click the **Author** button to open the **Questions** dialog.
- All users can view all questions; however, only **Authors** and **Owners** can change answers.

Only a user assigned an **Author** role can execute individual templates.

- The **Author** operation guides you through all questions (as defined in the template and processed during upload). You are **expected** to answer the questions.

- After the user clicks **Draft** or **Final**, the system generates a Microsoft Word document (.DOC/.DOCX format) that contains the processed content and narratives.
- Once the user clicks Final, the system generates the final version of the template and allows the Author user to check the **Ready for Review** check box.

The system enables the **Ready for Review** and **Ready for Build** checkboxes and the **Check In** and **Check Out** buttons when a Template is **Final**.

When a template is Final, the system enables the **Ready for Review** check box.

- Only the template Reviewer and the report Owner can check this check box.
- Once this box is checked, the system does the following:
  - Enables the **Ready for Build** option.
  - Prevents you from generating a final template.
  - Disables the **Ready for Review** check box. Once checked, this check box **cannot** be unchecked.

The system enables the **Ready to Build** option when you select **Ready for Review**.

- Only the Author or Owner can check the **Ready for Build** option.
- You can uncheck this option after it has been checked.

The system enables the **Check In** and **Check Out** buttons when you check the **Ready for Review** option.

- Click the **Check Out** button to open the **Check Out** dialog box.
- When a document is checked out, the system hides the **Check Out** button.
- The system displays the **Check In** button only if the final template has been checked out.
- Click the **Check In** button to open the **Check In** dialog.
- The Final template can be checked out by **one** user at a time.
- Only the user who checked the document out can check it in.

The system displays the **Last Check in Comments** in a text box on the screen for each template. Click the **Zoom** icon to open the check in comments in a popup dialog.

When all template sections and Header and Footer sections are checked, the Owner can build the report. The build process does the following:

- Merges all template sections into one.
- Creates a comprehensive .doc or .docx file.
- Saves the final document in the database and opens it on the screen.
- Enables all users (if the build was successful) to check-out the document and edit it manually.
- Enables users to check-in this document after check-out.

The system enables the **Build** button only if the following are true:

- The user is the owner of the periodic report.
- All the templates have been marked as **Ready for Build**.

If Documentum is configured, AG Services picks up the built file and saves it in Documentum.

- If Documentum is not configured, the file is marked **not submitted**.

- The file is saved in .PDF format.

## Role Security Requirements

The following table show which user types have access to various elements in the GUI.

| GUI Element       | Owner | Reviewer | Author | Comment  |
|-------------------|-------|----------|--------|--|
| Author Button     | Yes   | Yes      | Yes    | -  |
| Final             | Yes   | No       | Yes    | -  |
| Draft             | Yes   | Yes      | Yes    | -  |
| Save              | Yes   | No       | Yes    | -  |
| Ready for Review  | Yes   | No       | Yes    | <b>Ready for Review</b> is available when the <b>Final</b> has been generated for the Template.  |
| Ready for Build   | Yes   | Yes      | No     | <b>Ready for Build</b> is available only when <b>Ready for Review</b> is checked.  |
| Section Checkout  | Yes   | Yes      | No     | <b>Ready for Build</b> is available only when <b>Ready for Review</b> is checked.  |
| Add Other Content | Yes   | Yes      | Yes    | If the user is a Reviewer for any of the section templates, then he/she will have access<br><br>If the user is an author for any of the section templates, then he/she will have access. |
| Build             | Yes   | No       | No     | Available only when all templates are checked in and <b>Ready for build</b> is checked for all templates.  |

| GUI Element | Owner | Reviewer | Author | Comment  |
|-------------|-------|----------|--------|--|
| Checkout    | Yes   | Yes      | No     | Only available when the Build Process is complete.<br>If the user is a Reviewer for any of the section templates, he/she will have access  |
| View        | Yes   | Yes      | Yes    | Only available when the Build Process is complete.<br>If the user is a Reviewer for any of the section templates, he/she will have access  |
| Publish     | Yes   | No       | No     | Only available when the Build process is complete and the report is checked in.  |
| View        | Yes   | Yes      | Yes    | Only available when the Publish is complete.<br>Only available when the Build Process is complete.<br>If the user is a Reviewer for any of the section templates, he/she will have access. |

## Providing Report Content

Oracle Argus Dossier enables you to provide report content if you have one of the following user roles:

- Author
- Author & Reviewer
- Owner

When you click **Author** on the **Author** tab, the system opens the **Author** window.

For more information, see:

- [Author Window Fields](#)
- [Author Window Usage Considerations](#)



- [Entering Report Content](#)
- [Setting Ready for Review](#)
- [Editing a Template Manually](#)

## Author Window Fields

The following table lists and describes the fields and controls in the **Author** window.

| Field/Control         | Description   |
|-----------------------|---|
| Section Name          | The name of the section being created for the report.   |
| Description           | A description of the purpose of the section   |
| Completed Questions   | Click the expand icon to display a list of completed questions. The system places the questions in this section as you answer them.   |
| Incompleted Questions | Click the expand icon to display a list of questions that you must answer before building the report.<br>Click the question link to display the list of acceptable answers in the Answer section. |
| Answer                | Enables you to answer the questions presented in the Incompleted Questions section.   |
| Ignore Question       | Enables you to skip a questions by click the check box.   |
| Save                  | Saves the answers entered during the session in the database  |
| Close                 | Closes the Authoring window.  |
| Draft                 | Generates and displays a draft version (doc/docx file) with current saved answers. It does not save the file to the database.   |
| Final                 | Generates and displays a doc/docx file and saves the final version of the template in the database.   |
| View                  | Displays the saved doc/docx file.   |
| Spell Check           | Enables you to run spell check on text entered in a text field.   |

## Author Window Usage Considerations

When entering content in the **Author** window, be aware of the following:

- The application processes each section and stores it in the database.
- The **Author** button is available only to users that have been assigned as authors to the section.
- When multiple users are assigned as author to the same section, the application will allow a single section to be "Authored" by a single author at a time.

Clicking **Author** enables you to navigate through the questions and user prompts from the database.

- If there are no questions for this template, the system displays *No Questions Found* in the dialog.

- Clicking a question enables you to select or enter the answer in the **Answer** text box. If the question has been answered during an earlier session, the system displays the previous answer.

The Questions Tree has two sections: **Completed Questions** and **Incompleted Questions**.

- **Completed Questions** - The system displays a list of all answered questions. When you answer a question, the system moves the question from the Incompleted Questions section to this section
- **Incompleted Questions** - The system displays a list of all unanswered questions. If you fail to answer a previously answered questions, the system moves the questions back to the incompleted questions category.

The first part of the screen displays all the questions that have been asked in the template section.

- The first question is selected by default.
- You can scroll to view any question in the list.

The second section of the screen enables you to enter any text or select any option value as required.

Click **Spell Check** to check for spelling errors in a question answered in a text box.

- The system enables the **Spell Check** button only when you are required to enter the answer in a text box and when focus is on the text box.
- If the question requires you to select an answer from a drop-down list, the system disables the **Spell Check** button.

Click **Close** to stop the authoring process.

- If any questions have been answered, the system displays the following messages:  
By closing this window will lose any answers that have not been saved. Are you sure you want to continue?

If you click **Yes** (default), the system closes the message and the **Author** window without saving answers that have not been saved.

If you click **No**, the system closes the message box and the **Author** window remains open.

Click **Save** to save all answered questions before moving to the next question.

- You can continue the authoring process at any time.
- The system lists all completed (saved) questions in the Completed Question section.
- You can return to a previous question and change its answer.

Select **Ignore Question** if you wish to skip a question. The unanswered questions remain in raw format in the body of the file itself.

- This check box is active only when a question is selected and unanswered.

Click **Final** to generate a final .doc/.docx for a template. A final documents replaces the questions and operands with answers from the database.

- If one or more of the questions have not been answered, the system displays the following message:  
There are unanswered questions. Do you wish to generate the final document?

Click **Yes** to generate the .doc/.docx file and skip any unanswered questions.

- If you choose this option, you will have to check out the document and answer the remaining questions manually.
- If you click **No**, the Authoring window remains open for further entry. Any values derived from the unanswered questions will be left blank.

Once the final has been generated, click **Final** to open the generated .doc/.docx file from the database.

Click **Draft** to generate a .doc/.docx file using the latest data from the database in a read only state. The .doc/.docx will not be saved to the database.

You can move to the next question without answering the current question.

Only one Author can enter report content at a time.

The Author process can be audited.

## Entering Report Content

Use the following process to enter report content:

1. Select **Reports > Compliance > Periodic** to display a list of periodic reports.
2. When the application opens the list of periodic reports, locate the appropriate report and click its associated report icon.
3. Select **View Argus Dossier** from the pop-up menu.
4. When the system opens the **Author** tab for the selected report, click **Author**.
5. When the system opens the **Author** window, click the expand icon from the **Incompleted Questions** section to display a list of questions you must answer.
6. Click the question you want to answer to display open the **Answer** section, then do the following:
  - a. Select the answer from the drop-down list in the **Answer** section or enter any text as necessary.
  - b. Click **Save** to save the answers to the question.
  - c. Repeat steps 6a and 6b until you have answered all remaining questions.
  - d. Click **Final** to save the completed section of the report in the database.

## Setting Ready for Review

Once the final has been generated, the report author can indicate whether the template section is ready for review.

1. Select **Reports > Compliance > Periodic** to display a list of periodic reports.
2. When the application opens the list of periodic reports, locate the appropriate report and click its associated report icon.
3. Select **View Argus Dossier** from the pop-up menu.
4. When the system opens the **Author** tab for the selected report, locate the appropriate template and click the associated check box in the **Ready for Review** column.

5. When the system opens the **Ready for Review** dialog box, click **Yes**.
6. The system places a checkmark in the check box and enables the **Check Out** button.

## Editing a Template Manually

Oracle Argus Dossier enables you to use Microsoft Word to manually edit a template. Only one person can check out and edit a document at a time.

1. Select **Reports > Compliance > Periodic** to display a list of periodic reports.
2. When the application opens the list of periodic reports, locate the appropriate report and click its associated report icon.
3. Select **View Argus Dossier** from the pop-up menu.
4. When the system opens the **Author** tab, locate the appropriate template and click **Check Out**.
5. When the system opens the **Check Out** dialog box, type a relevant comment in the **Comment** field and click **Download**.
6. When the system opens the **File Download** dialog box, click **Open** to download a copy of the template file and open it in Microsoft Word.
7. Edit the document as required and save it.

### Note:

You must save the document in one of the standard Microsoft Word file types (.doc or .docx). Otherwise, you will be unable to check the document in.

For more information, see:

- [About the Check Out Dialog Box](#)
- [Usage Considerations](#)
- [Undoing a Check Out Operation](#)
- [Checking In an Edited Template](#)
- [About the Check In Dialog Box](#)
- [Usage Considerations](#)
- [Retaining Template Versions](#)
- [About the Template History and Comments Log](#)
- [Fields and Control](#)
- [Usage Considerations](#)

## About the Check Out Dialog Box

The following table lists and describes the fields in the **Check Out** dialog box.

| Field/Control | Description                                   |
|---------------|---|
| Section Name  | The name of the section you are checking out. |

---

| Field/Control | Description  |
|---------------|--|
| Comments      | Any relevant comments about the document. The system stores such comments in the Template History.   |
| Cancel        | Click Cancel to abort the check-out operation.   |
| Download      | Click Download to download a Microsoft Word (.doc/.docx) version of the template for manual editing. |

---

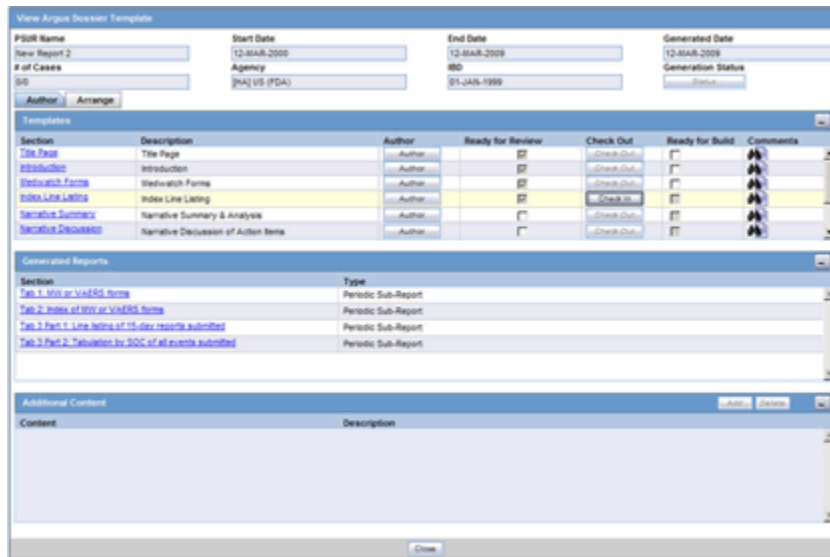
## Usage Considerations

When using the **Check Out** dialog box, be aware of the following:

- You can check out a processed template (.doc/.docx) only after the authoring operation is successfully completed and the author has checked **Ready for Review**.
- Any user role (Author/Reviewer/Owner) can check the file out.
- You cannot check a file in unless it has been checked out.
- You can enter comments when checking out a document. Comments are record in the comments field.
- Click **Download** to save the file in .doc/.docx format to a file location of the your choosing.
- All check-outs are auditable.
- The **Check In** button is disabled except for the person who checked the document out.
- The Check In dialog pop-up has an **Undo Checkout** button that enables you to reverse the check-out operation.
  - When you click **Undo Checkout**, the system dismisses the pop-up dialog box and makes the file available to other users.
  - The system **does not** save any changes you may have made to the template.

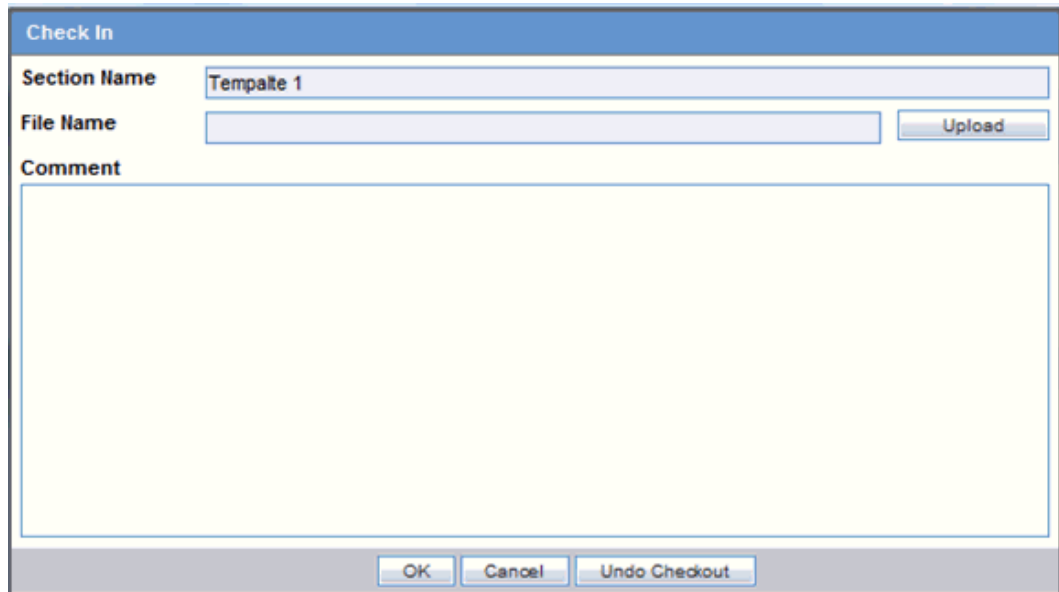
## Undoing a Check Out Operation

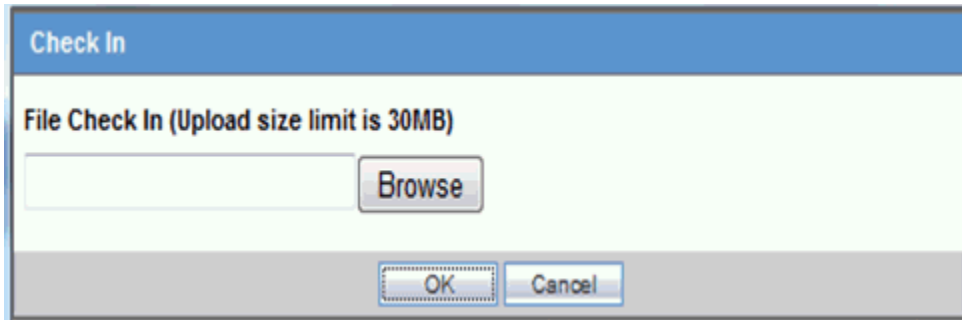
Under some circumstances, you may find it necessary to reverse a check out operation. When you check a document out, the system changes the **Check Out** button to a **Check In** button as shown in the following illustration.



To reverse a check out operation:

1. Go to the **Author** tab.
2. Locate and click the appropriate **Check In** button.
3. When the system opens the Check In dialog box, click **Undo Checkout**.





The system reverses the check out operation without saving changes you may have made to the document.

## Checking In an Edited Template

After using Microsoft Word to edit and save a template document, you must check it in using the **Check In** button on the **Author** tab.

To check in an edited document:

1. Go to the **Author** tab.
2. Locate and click the appropriate **Check In** button.
3. When the system opens the Check In dialog box:
  - a. Type the full path name for the template in the **File Name** field OR click **Browse** to locate and select the appropriate document.
  - b. Type any relevant information in the **Comment** field.
  - c. Click **OK**.

The system checks the document in.

## About the Check In Dialog Box

The following table lists and describes the fields and controls in the **Check In** dialog box.

| Field/Control | Description  |
|---------------|--|
| Section Name  | The name of the template you have checked out for editing. This can be a maximum of 50 characters.   |
| File Name     | The local path of the file that you have updated. The path name can be a maximum of 200 characters.  |
| Browse        | Click <b>Browse</b> to display the file selection dialog box and enable you to browse the local directory and locate the file to check in. |
| OK            | Click <b>OK</b> to upload the edited file.   |
| Cancel        | Click <b>Cancel</b> to abort the upload operation.   |
| Undo Checkout | Click <b>Undo Checkout</b> to reverse the check-out operation. This button is available only to the user who has the document checked out. |

## Usage Considerations

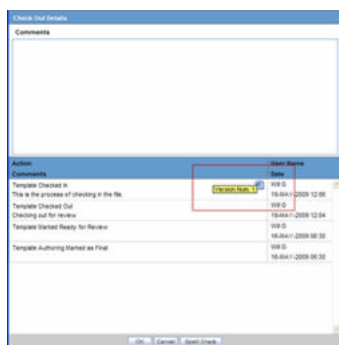
When checking in a document, be aware of the following:

- **Check In** is available only if the file is checked-out previously by the person updating the template.
  - The system disables the **Check In** button for all users except the user who checked the document out.
- You can indicate whether a section is ready for review
- The Check In dialog pop-up enables you to reverse the checkout.
- Click **OK** to initiate the upload process.
- You can identify a section that is ready for generation by clicking the **Ready for Review** checkbox on the **Author** tab.

## Retaining Template Versions

The Oracle Argus Dossier application provides version control for authored templates. Checking out an authored template initiates the review process and enables you to modify a template as necessary. The Oracle Argus Dossier application tracks the template version whether or not has a document management system configured for its use. In other words, if a DMS is not configured for Oracle Argus Dossier use, you can check out and modify templates and the system maintains an updated version of the template when you check it in. Once you check in a template, Oracle Argus Dossier retains a version of the modified template and makes it available for later viewing by any user who has access to Oracle Argus Dossier comments.

The following is an illustration of the Comments window. You can view the checked-in template by clicking the **Version Num** icon.



When checking templates in and out, be aware of the following:

- An icon identifies a document that is checked in.
- When you place the mouse cursor on the icon, the system provides the following version information:
  - Version Num: x where: x is the incremental version number.  
The system version of the document is considered Version 1 and the version number appears on the Word icon.

When you check out the system version (version 1) and check it in again, the system updates the version number to 2.



- When you click the **Word** icon, the system opens the document in the correct application.
  - If you want to replace a version of the document, you must save the file locally and check out the current template and check in the historical version.
- All checked out files retain the document history.

## About the Template History and Comments Log

The **Comments and History** dialog box provides you with information about the whether the document is checked out and who has checked it out, and how the document has been modified and who has modified it.

## Fields and Control

The following table lists and describes the fields and controls in the **Comments and History** dialog box.

| Field/Control         | Description  |
|-----------------------|--|
| Comments (entry)      | Enables you to enter comments retained in the Template History.    |
| Action                | Displays the action, if any.                                       |
| Comments (historical) | Enables the user to review comments in the Template History.       |
| Username              | Displays the user name of the user that entered the comments.      |
| Date                  | Displays the time date stamp in local user time (GMT offset).      |
| OK                    | Dismisses the window and records any comments entered by the user. |
| Cancel                | Cancels any action and dismisses the dialog.                       |
| Spell Check           | Checks for spelling errors in the comments text box.               |

## Usage Considerations

When using the **Comments and History** dialog box, be aware of the following:

- When you click **OK**, the system records any comments you entered and places them in the Template History.
- The Template History section retains a history of the following actions that have occurred for each template row:
  - Template Authoring Marked as Final
  - Template Marked Ready for Review
  - Template Checked Out
  - Template Checked In
  - Template Marked Ready for Build
- The template history box is not editable.

- The format of this history is as follows:
  - Row A-Left "Action: <action from the above listed items>"  
If no action occurs, do not print any text.
  - Row B-Left "Comments: <any comments entered>"  
If no comments exist for the action, do not print any text.  
  
Comments should display up to 255 characters (which is the limit on the comments box) and should wrap if needed.
  - Row 1-Right "<username>" aligned right  
Always print row 1-Right.
  - Row 2-Right Time date stamp "dd-mmm-yyyy HH:mm" aligned right.  
Always print row 2-Right.  
  
TimeDate Stamp shows the local time.
  - The Template History displays the history in descending order. (i.e., most recent record on top).
  - Template history records are separated by a line (¼ point).
  - You can enter comments without any action being completed. In this case only the comment will be recorded.

## Setting Ready for Build

Once the final has been generated, reviewed, and approved the report reviewer and/or report owner can indicate whether the template section is ready for the report build. **Ready to Build** must be checked for all sections of the report before the system can build the report.

To indicate a template section is ready for the report build:

1. Select **Reports > Compliance > Periodic** to display a list of periodic reports.
2. When the application opens the list of periodic reports, locate the appropriate report and click its associated report icon.
3. Select **View Argus Dossier** from the pop-up menu.
4. When the system opens the **Author** tab for the selected report, locate the appropriate template and click the associated check box in the **Ready for Build** column.

## Building a Dossier Report

Only the assigned owner can build a Dossier report. You can do this from the **Arrange** tab. Steps involved in building the report include the following:

- Setting Section Order
- Creating a Table of Contents
- Generating the Report
- Viewing the PDF

For more information, see:

- [About the Arrange Tab](#)
- [Arrange Tab Fields and Controls](#)

- [Arrange Tab Usage Considerations](#)
- [Arranging the Sections of a Report](#)
- [Removing a Section from a Report](#)
- [Reinstating a Section in a Report](#)

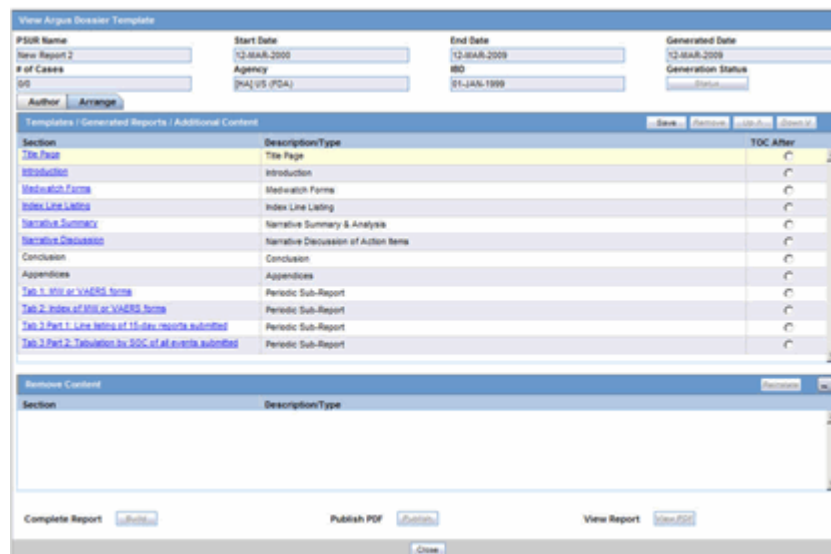
## About the Arrange Tab

On the **Arrange** tab, you can change the order in which sections appear in the final report. You can also delete a section as necessary.

To access the Arrange tab:

1. Select **Reports > Compliance > Periodic** to display a list of periodic reports.
2. When the application opens the list of periodic reports, locate the appropriate report and click its associated report icon.
3. Select **View Argus Dossier** from the pop-up menu.
4. When the system opens the **Author** tab, click Arrange to open the **Arrange** tab.

The system opens the Arrange tab.



## Arrange Tab Fields and Controls

The following table lists and describes the sections and fields on the **Arrange** tab.

| Section/Field/Control                              | Description   |
|--|---|
| Templates / Generated Reports / Additional Content | This section lists and describes the template sections in the report. |
| Save button  | Enables you to save the current report layout.                        |

| Section/Field/Control     | Description   |
|---------------------------|---|
| Remove button             | Enables you to remove any section. When you click Remove, the application removes the section and places it in the Removed Content section of the tab.                    |
| Up button                 | Enables you to move the selected report section up in the list.   |
| Down button               | Enables you to move the selected report section up in the list.   |
| Section                   | This column contains the name of each section of the report. Click the link to open the report section.   |
| Description / Type        | This is either the Description added by the user or the type of file when the item is a generated report  |
| TOC After                 | Indicates where the TOC will be placed in the report.   |
| Remove Content            | This section displays the content of the report that has been removed.  |
| Reinstate button          | Allows you to put the removed content back in the report at the bottom of the list. Use the Up and Down buttons to put the section in its correct position in the report. |
| Minimize / Maximize icons | Enables you to collapse (minimize) or expand (maximize) the Remove Content section.   |
| Section                   | This column contains the name of each section that has been removed. Click the link to open the removed section.  |
| Description / Type        | This is either the Description added by the user or the Type of file when the item is a generated report that has been removed  |
| Build button              | Allows users to initiate the generate process   |
| Generation Status         | Enables you to see the status of the report build. This button is not available until you initiate the build operation.   |
| View PDF button           | Enables you to view the compiled report.  |
| Publish                   | Enables you to initiate the publish operation.  |

## Arrange Tab Usage Considerations

When using the **Arrange** tab, be aware of the following:

- Select the row and click **Up** or **Down** to arrange the report sections in the desired order for the final report.
  - If you select the first row, the system disables the **Up** button.
  - If you select the last row, the system disables the **Down** button.
- If you move reports or attachments, the system does not save them until you click **Save**.
  - The system displays the following message:  
The information was saved successfully
  - If you click **Close** to leave the screen, the system displays the following message:  
You have made changes to the Dossier report order, if you press OK, changes made will be lost.
- You can remove a section to prevent it from being included in the final build.
  - If you remove a section, the system maintains the order.
  - If the Build process is completed, the system disables the **Up** and **Down** buttons.

- You must select a row before clicking **Remove**.
  - If you do not select a row, the system disables the **Remove** button. When you click **Remove**, the system displays the following message:  
`Are you sure you want to remove the highlighted row?`
- When you click **Remove**, the system moves the selected row to the **Remove Content** section.
  - Click the **Minimize/Maximize** buttons to collapse and expand the **Remove Content** section.
  - Collapsing the section provides more space for the **Templates / Generated Reports / Additional Content** section.
  - When expanded, the **Remove Content** section displays a minimum of three rows.
- Click **Reinstate** to put a removed section back in the report.
  - You must select a row before clicking **Reinstate**.
  - The system disables the **Reinstate** button until you select the row.
  - When you click **Reinstate**, the system displays the following message:  
`Are you sure you want to reinstate the highlighted row?`
  - When you click **Reinstate**, the system moves the selected row to the bottom of the **Templates / Generated Reports / Additional Content** section.
- If the Build process has completed, the **Remove** and **Reinstate** buttons are disabled

## Arranging the Sections of a Report

Use the following procedure to arrange the sections of a report.

To arrange the sections of a report:

1. Select **Reports > Compliance > Periodic** to display a list of periodic reports.
2. When the application opens the list of periodic reports, locate the appropriate report and click its associated report icon.
3. Select **View Argus Dossier** from the pop-up menu.
4. When the system opens the Author tab, click **Arrange** to open the **Arrange** tab.
5. When the system opens the Arrange tab:
  - a. Select a row.
  - b. Click **Up** to move the row up in the list OR click **Down** to move the row down in the list.
  - c. Click **Save**.

## Removing a Section from a Report

Use the following procedure to remove a section of a report:

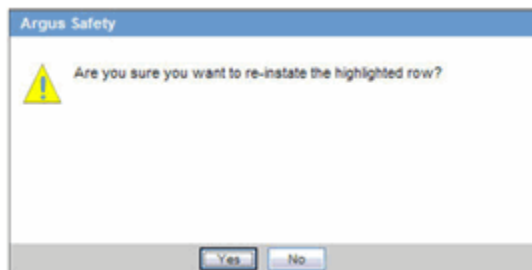
1. Select **Reports > Compliance > Periodic** to display a list of periodic reports.

2. When the application opens the list of periodic reports, locate the appropriate report and click its associated report icon.
3. Select **View Argus Dossier** from the pop-up menu.
4. When the system opens the Author tab, click **Arrange** to open the **Arrange** tab.
5. When the system opens the Arrange tab, select a row and click **Remove**.
6. When the system removes the section and places it in the **Remove Content** section of the tab, click **Save** to save the changes to the report.

## Reinstating a Section in a Report

Use the following procedure to reinstate a section in a report:

1. Select **Reports > Compliance > Periodic** to display a list of periodic reports.
2. When the application opens the list of periodic reports, locate the appropriate report and click its associated report icon.
3. Select **View Argus Dossier** from the pop-up menu.
4. When the system opens the Author tab, click **Arrange** to open the **Arrange** tab.
5. When the system opens the Arrange tab, go to the **Remove Content** section, select the section to put back in the report, and click **Reinstate**.
6. When the system displays the following message, click **Yes** to put the section back in the report.



7. When the system places the reinstate section at the bottom of the section list, choose one of the following:
  - Leave the document in its present position.
  - Select the row and use the **Up** and **Down** buttons to move the section to its correct position.

## Creating a Table of Contents

The table of contents for a Dossier report is created at run time. Therefore, you must specify the location of the table of contents in the document on the **Arrange** tab. If you do not specify a location, the system automatically prints the table of contents as the first page of the report. Click the appropriate option button in the **TOC After** column to indicate where to place the TOC. For example, if you want the TOC to appear **after** the title page, click the TOC After option button associated with the Title Page section.

When specifying the location of the table of contents, be aware of the following:

- On the **Arrange** tab, you can specify, at any time, which content section the TOC follows.

- You can select the **TOC After** option button for the section the TOC will be placed after during the final build.
- Pages before the table of contents **will not** be numbered automatically.
- Pages before the table of contents **will not** include the header and footer. However, the header and footer will be included on the TOC pages. A section must be specified as **TOC After**; otherwise the TOC begins printing on the first page of the report.
  - If you remove a row specified as **TOC After**, the system removes the row from the build content. None of the remaining section will have **TOC After** specified.
  - If you reinstate the removed section, TOC After **will not** be specified.
- The system generates the Table of Contents based on the order of the report sections when the final build is started.
  - Each section row is a new chapter.
  - The chapter name comes from the section name.
- The system creates Adobe Acrobat bookmarks for each section row of the report using the section name given by the user or the system.
- The system creates up to 10,000 bookmarks for each MedWatch, CIOMS, or VAERS form. If there are more than 10,000 forms, the system creates a single bookmark for all forms.
- The system generates and displays the TOC in portrait orientation.

## Generating a Dossier Report

The build process merges the report sections and generates a comprehensive period report. Since there is no need to modify a generated report, the system produces all reports in PDF format.

The periodic report owner is the only person who can generate a report and can start the build process **only** after all sections of the periodic report have been marked **Ready for Build**.

Once all sections have been marked **Ready for Build**, the system enables the **Build** button on the **Arrange** tab.

To generate a report:

1. Select **Reports > Compliance > Periodic** to display a list of periodic reports.
2. When the application opens the list of periodic reports, locate the appropriate report and click its associated report icon.
3. Select **View Argus Dossier** from the pop-up menu.
4. When the system opens the Author tab, verify that all parts of the report are marked Ready for Build and click the **Arrange** tab.
5. When the system opens the **Arrange** tab, click Build to generate the report.

The system generates the report.

For more information, see:

- [Report Generation Usage Considerations](#)

## Report Generation Usage Considerations

When building a report, consider the following:

- Only the owner of the periodic report can initiate the generate process.
- The owner can initiate the build process **only** after all sections of the periodic report have been marked **Ready for Build**.
- The **Build** button active if the **Ready for Build** check box on the **Author** tab is checked.
- When you click **Build**, the system compiles the report in the order on the **Arrange** tab.
  - The system converts all files to PDF (if not already PDF) and adds any required header, footers, and page numbers to the report.
  - The system displays a message box with the following message:  
Your Dossier report has been submitted to final build.
  - The system saves the current arrangement before it starts the **Build** process.
- The Build process does the following:
  - Merges all template sections into a single PDF file.
  - Ignores instructional comments.
- You **cannot** modify a periodic report while the Dossier build process is running, and the system disables the **Modify** and **Print** buttons until the build process is complete.
- The system prevents you from moving any section on the **Arrange** tab while the system is building the report. The **Arrange** section should be grayed out and you cannot move any sections of the report.
- Once the final build is completed, the system disables the **Build** button.
- If you make any changes on the **Arrange** tab and click **Save** after the build is successfully completed, the system displays the following message:  
Your dossier is already built. Saving any changes will require that you rebuild the dossier again. Are you sure you want to save these changes.

If you click **Yes**, the system does the following:

- Dismisses the message.
  - Removes the existing report.
  - Enables the **Build** button.
  - Disables the **View PDF** button.
  - Disables the **Publish** button.
- If you click **No**, the system retains the existing report.
- Status Button
    - The system activates this button **after** you start the build process.
    - This button remains active once the build process is completed
    - If you click this button after the build process starts, the system displays the status of the build process in the standard report generation pop.
    - When you click **Close** on the status window, the system does the following:



- \* Closes the status window.
- \* Continues to generate the report.
- The status window displays the progress of the build process.
- The system displays the following statuses, in order of occurrence:
  - Dossier Report Generation Request Received
    - Status is followed by a date and time stamp for when this action kicked off the report in local user GMT offset date/time: "dd mmm yyyy HH:mm" (i.e. "02-FEB-2008 15:43")
  - Dossier Report Generation Started
    - The system displays a grayed out check mark until this process starts (picked up by AG Service)
    - Once AG Service picks up the process, the system displays a date and time stamp showing when this action started in local user GMT offset date/time: "dd mmm yyyy HH:mm" (i.e. "02-FEB-2008 15:43")
  - Report Converting Templates to PDF
    - The system displays a grayed out checkmark until this process starts.
    - While the process is in progress, the system displays "Processing..."
    - When the process is complete, the system displays the total processing time in minutes and the gray checkmark changes to green.
    - Processing time displays as follows: "(completed in xx min.)"
  - Merging Sections before Table of Contents
    - The system displays a grayed out checkmark until this process starts.
    - While the process is in progress, the system displays "Processing..."
    - When the process is complete, the system displays the total processing time in minutes and the gray checkmark changes to green.
    - Processing time displays as follows: "(completed in xx min.)"
  - Merging Sections after Table of Contents
    - The system displays a grayed out checkmark until this process starts.
    - While the process is in progress, the system displays "Processing..."
    - When the process is complete, the system displays the total processing time in minutes and the gray checkmark changes to green.
    - Processing time displays as follows: "(completed in xx min.)"
  - Creating Table Of Contents and Bookmarks
    - The system displays a grayed out checkmark until this process starts.
    - While the process is in progress, the system displays "Processing..."
    - When the process is complete, the system displays the total processing time in minutes and the gray checkmark changes to green.
    - Processing time displays as follows: "(completed in xx min.)"
  - Creating Final Dossier
    - The system displays a grayed out checkmark until this process starts.

- While the process is in progress, the system displays "Processing..."
- When the process is complete, the system displays the total processing time in minutes and the gray checkmark changes to green.
- Processing time displays as follows: "(completed in xx min.)"

#### Dossier Report Generation Completed

- A grayed out checkmark is displayed until this process is started
  - Once the process is complete, the system displays a date and time stamp showing when this action started in local user GMT offset date/time: "dd mmm yyyy HH:mm" (i.e. "02-FEB-2008 15:43"). Errors in the build process are logged into the Safety Error Log.
  - The system displays a grayed out check mark until this process starts (picked up by AG Service)
- If an error occurs during any of the build process, a status box displays the following error message:  
Failure, please refer to the Argus Safety Error Log for details.  
Any final build error(s) are recorded in the Oracle Argus Safety error log.  
When an error occurs, the system destroys any compiled documents. You must restart the process

#### View PDF Button

- Once the final build process is completed, the system enables the **View PDF** button.
- Click this button to display the report.

#### Publish PDF Button

- Once the final build process is completed, the system enables the **Publish** button.
- If you make changes to the report, the system disables this button until a new build process is completed.

If you make any changes in the Arrange window (i.e., move a report section up or down or add or remove a report section) after the build is completed, the following occurs:

- The system displays the following message:  
The final dossier has been generated. Making changes now will require the report to be rebuilt. Are you sure you want to make changes?" Options OK or Cancel.
- If you click **OK**, the system does the following:
  - Disables the **View PDF** button.
  - Disables the **Status** button.
  - Disables the **Publish** button.
  - Enables the **Build** button.
- If you click **Cancel**, the system closes the message box and cancels the change action.

When the system opens the **Argus Dossier Template** window, only the following are enabled. All other buttons, icons, or links are disabled.

#### Status Button

#### Author Tab Section Links

- Template Section Links
- Generated Report Links
- Additional Content Links
- Header/Footer Links

Author Tab Comments Icon

- The comments are read-only, and you **cannot** enter new comments for the Templates Comment icon and the Header and Footer Comments icon.

Arrange Tab

- Arrange Tab Section Links including links to templates, generated reports, and additional content links
- Removed content links.
- View PDF Button

Per the regulation "Guidance for Industry, Providing Regulatory Submissions in Electronic Format - General Considerations" (1999), "the initial page of the paper document should be numbered page 1."

- Set the common profile to "Starting from the First Page" so that the first page of the report is page 1, no matter where the table of contents is placed on the **Dossier Arrange** tab.
- If page numbering is turned off, no page number prints. However, the first page of the report is considered page 1.

## Publishing a Dossier Report

The **Publish** function is available only after the report has been successfully generated.

To publish a report:

1. Select **Reports > Compliance > Periodic** to display a list of periodic reports.
2. When the application opens the list of periodic reports, locate the appropriate report and click its associated report icon.
3. Select **View Argus Dossier** from the pop-up menu.
4. When the system opens the Author tab, verify that all parts of the report are marked Ready for Build and click the **Arrange** tab.
5. When the system opens the Arrange tab, click **Publish** to publish the report. The report gets pushed to Documentum after **Publish** is clicked. The system activates the **Publish** button on the **Arrange** tab after the report has been generated successfully.

The system publishes the report.

6. Click **View PDF** to view the completed report.

For more information, see:

- [Publish Usage Considerations](#)

## Publish Usage Considerations

When publishing a report, be aware of the following:

- The Publish function is available **after** a report has been successfully generated.
- The system will publish the report only **after** the report has been built.
- The system displays the status of the **Publish** process.

| Status | Case ID      | Revision Date | Destination   | Total Frame ID | Product     | License Type  | Primary Event | Reason for Scheduling                          | Report Forms                            | Submitted Date | Case Del. Date |
|--------|--------------|---------------|---------------|----------------|-------------|---------------|---------------|--|---|----------------|----------------|
|        | 2000/2000124 | 21-MAY-2007   | (RA) EUPHESIA | 15-day Initial | Wander Drug | Marketed Drug | Tachycardia   | Auto-scheduled (EU) EU, SHT E2b Foreign, Wonde | US FDA, Health Canada, 2005A Drug       | 08-APR-2009    | N/A            |
|        | 2000/2000124 | 04-MAY-2008   | (LP) Acme Inc | 7-day Initial  | Wander Drug | Marketed Drug | Whisking      | Wander Drug ( 65-112 )                         | US Dossier: Wander Drug Template A, 400 | 08-APR-2009    | N/A            |
|        | 00-0000      |               | TEST AGENCY   |                |             |               |               |  | US Dossier: Wander Drug Template A, 400 | 13-MAY-2009    |                |

- Users can have access to information used to create the Dossier Report even after Oracle Argus Dossier generates the report. Left-click the **Status** icon to the left of the submitted report and select **View Argus Dossier** from the menu.

# 3

## Writing Template Scripts

Before you can use templates to generate reports, you (or someone with script writing or programming background) must create *template scripts*. Template scripts define the format for the report.

For more information, see:

- [About Templates](#)
- [Using Microsoft Word to Write Templates](#)
- [Using the Template Scripting Language](#)

### About Templates

*Templates* are tools that an administrator or template writer uses to define the structure of a periodic report and the way this report will be laid out when it prints. Once a template is processed, the resulting report is a Microsoft Word (.doc or .docx). A template:

- Can be scripted for the entire periodic report and/or can be split into sections that can be allocated to different users for processing. Once processed, the resulting report is a Microsoft Word document (.doc/.docx)
- Normally has a one-to-one relationship with a single product (active ingredient) and agency
- Can be used to create a template for another product/agency

Template writers use predefined syntax and elements to script templates. The basic objective of the syntax and elements is to provide tools that enable the template writer to:

- Author predefined textual narratives in the body of the template
- Pre-populate values in the body of the document directly from the database
- Prompt users for values not available in the database
- Process user entered values and insert narratives in the document
- Insert instructional text for the report authors
- Insert referential text with links to non-submission content. (Example - Attached Case Listings, CDAs, CIOMSII reports etc.)

The template automates the report generation process as much as possible. However, report authors have the ability to manually edit the content of a report as necessary.

For more information, see:

### Using Microsoft Word to Write Templates

Oracle Argus Dossier supports the use of templates written in Microsoft Word 2000 or higher.

 **Note:**

If you are using Microsoft Word 2007, contact your system administrator to verify that Microsoft Word 2007 is installed on the Report Server.

To begin writing a template:

1. Open a new, blank document in Microsoft Word and save it.
2. Save the document in .DOC or .DOCX format before editing it.

When writing a template, adhere to the following guidelines:

- Standardize the Microsoft Word template (Normal.dot).  
Standardize the Normal.dot template for all users designated as owners. This reduces amount of formatting required after the build process. Because the output file from the build process automatically uses the **Normal.dot** template on the owner's desktop, the output document may not retain formatting used in the original template.
- **Avoid** using the cut and paste operations.  
The cut/paste operations introduce unknown formatting objects from the source document. Such formatting objects may cause the file to be rejected during the template upload process.
- Do not define special formatting styles in the templates.  
Avoid defining any special formatting styles in the templates. Maintain the same styles as defined in Normal.dot.
- **Do not** cut and paste a table from another document into the template.  
If a table is required in a template, do not cut/paste the table from another document. Instead, create a new table in the RTF template.
- **Do not** generate the TOC until the build process is complete.  
Wait to generate the final table of contents until after the build process is complete. This enables you to include merged documents and updated page numbers in the template.
- The application creates PDF bookmarks only for heading styles created in the Word document.  
The publish process ignores all other styles—even if they appear in the table of contents in the Word document.
- Put processing instructions in a `<% . . . %>` block.  
The application processes instructions embedded in a `<% . . . %>` block. Each block can contain a set of instructions. To enable the application to process the instructions, embed each instruction in a specific tag.  
  
In other words, make sure the contents of the `<% . . . %>` block are tags that Oracle Argus Dossier supports. The system ignores other tags and will output them as a blank string in the report. Any text outside the `<% . . . %>` block will be replicated in its actual form in the output document.
- Apply uniform formatting.  
Apply the same formatting to a single block of instructions (i.e., the contents in the `<% . . . %>` block) in the template.
- Make sure scripting tags meet XML standards.  
The scripting tags should comply with XML standards. The contents of the `<% . . . %>` tag should be well-formatted XML.

- Use lowercase characters for all tags and variable (implicit/explicit). Use lowercase character for all tags and variables (implicit and explicit). Explicit variables are case-sensitive.
- **Do not** use scripting tags (i.e., <%, %>, \ . . . \, <, >) in any content that needs to appear in the output document.

## Using the Template Scripting Language

This section provides information about using the template scripting language. It includes a Template Writing Quick Reference and discussions of the following:

- [Template Scripting Elements](#)
- [Template Writing Quick Reference](#)

## Template Scripting Elements

A template script includes the following elements:

- Implicit Variables
- Explicit Variables
- Operands
- Nested Questions

For more information, see:

- [Using Implicit Variables](#)
- [Rules for Using Implicit Variable](#)
- [Creating and Using Custom Variables](#)
- [Pre-defined Periodic Report Variables](#)
- [Using Explicit Variables](#)
- [Using Declared Variables <var>](#)
- [Using Author Questions <q>](#)
- [Using Operands](#)
- [Using the <if> <then> <else> Statement](#)
- [Using Nested Questions](#)

## Using Implicit Variables

*Implicit variables* are pre-defined, named elements that correspond to implicit variables defined by the system and are available to the author of the template without declaring them.

## Rules for Using Implicit Variable

When using implicit variables, be aware of the following:

- Begin periodic report variables with pound (#) sign (e.g., #TRADE\_NAME)

- Values to these variables are always used in the context of the periodic report configuration. For example, if you configure a periodic report for Product A (ICH PSUR - Subject Tab), this variable **only** appears as the Product A trade name. Consider the following usage example:

"There were no cases related to {#TRADE\_NAME}."

where:

#TRADE\_NAME maps to a defined value known by the parser.

- You can map these variables to a formula or to the result of a specific SQL statement that is pre-encoded in the parser.
- These variables may return a single or multiple values (separated by "/" )
- You can use these variables in any template.
- Some implicit variables are considered to be multiple instances of values. Variables of this type require you to use indexes to indicate a particular position in the list. For example, a list of SOC terms sorted by occurrence where the most frequently used term is listed first. For example, this variable is included as #SOC\_COUNT\_TOP(x), where x indicates the "x" highest occurrence based on the count where the SOC term with the highest occurrence is listed first.

## Creating and Using Custom Variables

Oracle Argus Dossier enables you to create and use custom variables. Ideally, you should define custom variables **after** Oracle Argus Safety has been completely configured to allow for correct and complete SQL statements. Before attempting to create and use custom variables, please seek help from IT personnel.

To define custom variables:

1. Open the CFG\_DSR\_TEMPLATE\_VARIABLES table.
2. Enter values in the following fields:

| Field          | Field Value  |
|----------------|--|
| ID             | Enter a unique number in this field.<br>This number must be the next number in the number sequence. For example, if ID number for the last row is 100, the new row must have an ID number of 101 |
| VARIABLE_NAME  | Enter the name of the variable to be used in the template.<br>Use lowercase characters when entering this value.<br><b>Do not</b> use the # sign in the name.                                    |
| SQL_QUERY      | Enter the actual SQL statement to be executed when the template parser processes the variable name.  |
| REPORT_RELATED | Enter a 1.<br>The application ignores any other value.   |
| DELETE         | This must be a NULL value.<br>If you place any other value in this field, the application considers the variable deleted.  |



## Pre-defined Periodic Report Variables

Oracle Argus Dossier provides a number of pre-defined periodic report variables. When using these variables in your template scripts, be aware of the following:

- The system only considers encoded events for SOC-based variables; it ignores all unencoded events.
- For all variables that return a count, return a 0 when the result is NULL.
- When a variable returns multiple values, those values are separated with a forward slash ( / ) character.
- For all variables that return a frequency value, print the value with a % sign and round it to two (2) decimal places.
- All SQL statements for pregnancy cases consider any populated neonate.

The following table lists and describes the pre-defined periodic report variables available for your use.

| Variable                | Description  |
|-------------------------|--|
| #REPORT_NUMBER          | The Report Number entered in the report header configuration in the Subject Tab.   |
| #TRADE_NAME             | The Trade Name entered in the report header configuration. By default, Oracle Argus Safety pre-populates the configured Trade Name for the ingredients. You may change these defaults by editing the name. |
| #GENERIC_NAME           | The ingredients that the report has been configured to run against.  |
| #REPORT_START_DATE      | The inclusion period start date for the report (Scheduling Tab).   |
| #REPORT_END_DATE        | The inclusion period end date for the report (Scheduling Tab).   |
| #IBD                    | The earliest birth date for the product licenses included in the report. If configured to do so, Oracle Argus Safety pre-populates this value. This value can be changed if necessary.                     |
| #COUNTRY_IBD            | The name of the country with the earliest license date based on the products in the report configuration.  |
| #TOTAL_COUNTRIES_MARKET | The total number of countries where both of the following are true:<br>The selected products have a marketed license.<br>The selected products <b>do not</b> have a withdrawn date.                        |
| #TOTAL_CASES            | The total number of adverse events being reported on. This value is based on the cases selected for the report.  |
| #TOTAL_CASES_SERIOUS    | The total number of serious cases included in the generated report. A case is considered serious if any event in the case has a seriousness check box checked.   |

| Variable                                      | Description  |
|---|--|
| #TOTAL_CASES_NON_SERIOUS                      | The total number of non-serious cases included in the generated report.<br>A case is considered non-serious if all of the events <b>do not</b> have the Seriousness check box checked.   |
| #TOTAL_CASES_SP                               | The total number of spontaneous cases included in the generated report.<br>A case is considered spontaneous when the Report Type <b>is not</b> marked as <i>Include in Clinical Trial</i> in List Maintenance.   |
| #TOTAL_CASES_SP_LIT                           | The total number of spontaneous literature cases included in the generated report.<br>A case is considered spontaneous literature when both of the following are true:<br>The Report Type <b>is not</b> marked as <i>Include in Clinical Trial</i><br><i>Include as Literature</i> is checked in List Maintenance. |
| #TOTAL_CASES_SOC_PRIMARY("soc_name")          | The total number of cases where the primary event has been encoded using the same System Organ Class as specified in <i>soc_name</i> .   |
| #TOTAL_CASES_SOC("soc_name")                  | The total number of cases where any event has been encoded using the same System Organ Class as specified in <i>soc_name</i> .   |
| #TOTAL_CASES_SOC_SERIOUS("soc_name")          | The total number of serious cases where both of the following are true:<br>Any event has been encoded using the same System Organ Class as specified.<br>The same event is serious.  |
| #TOTAL_CASES_SOC_NON_SERIOUS("soc_name")      | The total number of non-serious cases where both of the following are true:<br>Any event has been encoded using the same System Organ Class as specified.<br>The same event is non-serious.  |
| #TOTAL_CASES_SOC_UNLISTED("soc_name")         | The total number of cases where both of the following are true:<br>The event assessment for the product is <i>Unlisted</i> .<br>Any event has been encoded with the specified System Organ Class.  |
| #TOTAL_CASES_SOC_SERIOUS_UNLISTED("soc_name") | The total numbers of cases where both of the following are true:<br>The event assessment for the product is <i>Unlisted</i> .<br>Any serious event has been encoded with the specified System Organ Class.   |
| #LISTOFTERMS_SOC_SERIOUS_UNLISTED("soc_name") | The Event name as coded for cases where both of the following are true:<br>The event assessment for the product is <i>Unlisted</i> .<br>Any serious event has been encoded with the specified System Organ Class.<br>Multiple Terms must be separated with a forward slash (/).                                    |
| #SUBMISSION_DATE                              | The date the report is due. The system calculates this date based on the values in the Scheduling tab for the report configuration.  |

| Variable                             | Description   |
|--------------------------------------|---|
| #SOC_NAME_TOP(x)                     | The <i>System Organ Class</i> with the highest count based on the cases within report and the specified level.<br>SOC term name with the xth highest occurrence in the case series. For example; #SOC_NAME_TOP(2) returns the name of the SOC with the second highest occurrence in the line listings.<br>If there is more than one SOC at this level, the application uses a forward slash ( / ) to separate them when it prints the report. |
| #SOC_COUNT_TOP(x)                    | The total count of the System Organ Class that has the highest count based on the cases within the PSUR Report and the level as specified.<br>SOC term count that has the xth highest occurrence in the case series. For example, #SOC_COUNT_TOP(2) returns the total number of occurrences for the SOC with the second highest occurrence in the line listings".   |
| #SOC_FREQUENCY_TOP(x)                | The frequency of occurrence (across all cases in the report) of the System Organ Class that has the xth highest count based on the cases in the report.<br>Frequency of occurrence of events in the SOC that has the xth highest occurrence. For example, #SOC_FREQUENCY_TOP(2) = #SOC_COUNT_TOP(2) / #TOTAL_CASES  |
| #SOC_PT_NAME_TOP(x,y)                | The PT term name with the yth highest occurrence in the xth highest SOC occurrence.<br>For example; #SOC_PT_NAME_TOP(2,3) returns the third most frequent Preferred Term name of the second most frequent SOC for the cases in the PSUR.  |
| #SOC_PT_COUNT_TOP(x,y)               | The number of occurrences of the PT name with the yth highest occurrence in the xth highest SOC occurrence.<br>For example; #SOC_PT_COUNT_TOP(2,3) returns the number of the third most frequent Preferred Term of the second most frequent SOC for the line listings.  |
| #TOTAL_COUNTRIES_COUNT__REPORT       | The total number of countries from the Country of Incidence field (in the Case Form) based on the cases in the report.  |
| #TOTAL_CASES_COUNT_DRUGINTERACTIONS  | The total number of cases where any product on the Case Form (Product tab) has <i>Yes</i> specified for Interactions  |
| #TOTAL_CASES_COUNT_DRUGABUSE         | The total number of cases where any product on the Case Form (Product Tab) has <i>True</i> specified for Abuse  |
| #TOTAL_CASES_COUNT_PROSPECTPREGNANCY | The total number of cases where both of the following are true:<br>The patient is <i>Pregnant</i> .<br>The pregnancy type is <i>Prospective</i> . (Case Form   Patient Tab   Pregnancy Details).  |
| #TOTAL_CASES_COUNT_RETROPREGNANCY    | The total number of cases where the following are true:<br>The patient is <i>Pregnant</i> .<br>The pregnancy type is <i>Retrospective</i> . (Case Form   Patient Tab   Pregnancy Details).  |

| Variable  | Description   |
|---|---|
| #TOTAL_CASES_COUNT_PENDING_DELIVERY_PROSPECT          | The total number of cases where all of the following are true:<br>The patient is <i>Pregnant</i> .<br>The pregnancy type is <i>Prospective</i> .<br>The delivery date is greater than the current date. (Case Form   Patient Tab   Pregnancy Details).<br>If you do not enter a delivery date, the application ignores the case.  |
| #TOTAL_CASES_COUNT_ELECTIVE_TERMINATIONS_PROSPECT     | The total number of cases where all of the following are true:<br>The patient is <i>Pregnant</i> .<br>The pregnancy type is <i>Prospective</i> .<br>The birth type is <i>Elective Termination</i> (Case Form   Patient Tab   Pregnancy Details).  |
| #TOTAL_CASES_COUNT_SPONTANEOUS_ABORTIONS_PROSPECT     | The total number of cases where all of the following are true:<br>The patient is <i>Pregnant</i> .<br>The pregnancy type is <i>Prospective</i> .<br>The birth type is <i>Spontaneous Abortions</i> (Case Form   Patient Tab   Pregnancy Details).   |
| #TOTAL_CASES_FREQUENCY_SPONTANEOUS_ABORTIONS_PROSPECT | The frequency of occurrence of cases where all of the following are true:<br>The patient is <i>Pregnant</i><br>The pregnancy type is <i>Prospective</i><br>The birth type is <i>Spontaneous Abortions</i> and the pregnancy type is either <i>Prospective</i> or <i>Retrospective</i> .<br>Computed as:<br>("=#TOTAL_CASES_COUNT_SPONTANEOUS_ABORTIONS / (#TOTAL_CASES_PROSPECT_PREGNANCY+#TOTAL_CASES_RETRO_PREGNANCY)") |
| #TOTAL_CASES_COUNT_NORMAL_OUTCOME_PROSPECT            | The total number of cases where all of the following are true:<br>The patient is <i>Pregnant</i> .<br>The pregnancy type is <i>Prospective</i> .<br>The fetal outcome is <i>Normal</i> . (Case Form   Patient Tab   Pregnancy Details)  |
| #TOTAL_CASES_COUNT_FOLLOUP_LOST_PROSPECT              | The total number of cases where all of the following are true:<br>The patient is <i>Pregnant</i> .<br>The pregnancy type is <i>Prospective</i> .<br>The birth type is <i>Lost to F/U</i> (Case Form   Patient Tab   Pregnancy Details).   |
| #TOTAL_CASES_COUNT_FOLLOUP_DONE_PROSPECT              | The total number of cases where all of the following are true:<br>The patient is <i>Pregnant</i> .<br>The pregnancy type is <i>Prospective</i> .<br>The birth type is <b>not</b> <i>Lost to F/U</i> (Case Form   Patient Tab   Pregnancy Details).  |

| Variable                                     | Description   |
|--|---|
| #TOTAL_CASES_COUNT_ABNORMAL_OUTCOME_PROSPECT | The total number of cases where all of the following are true:<br>The patient is <i>Pregnant</i> .<br>The pregnancy type is <i>Prospective</i> .<br>The fetal outcome is <b>not Normal</b> . (Case Form   Patient Tab   Pregnancy Details).   |
| #TOTAL_CASES_COUNT_CAMAJOR_PROSPECT          | The total number of cases where all of the following are true:<br>The patient is <i>Pregnant</i> .<br>The pregnancy type is <i>Prospective</i> .<br>The fetal outcome is <i>CA Major</i> (Case Form   Patient Tab   Pregnancy Details).   |
| #TOTAL_CASES_FREQUENCY_CAMAJOR_PROSPECT      | The frequency of occurrence of cases where all of the following are true:<br>The patient is <i>Pregnant</i> .<br>The pregnancy type is <i>Prospective</i> .<br>The fetal outcome is <i>CA Major</i> and <b>is not Normal</b> (Case Form   Patient Tab   Pregnancy Details)                      |
| #TOTAL_CASES_COUNT_CAMINOR_PROSPECT          | The total number of cases where all of the following are true:<br>The patient is <i>Pregnant</i> .<br>The pregnancy type is <i>Prospective</i> .<br>The fetal outcome is <i>CA Minor</i> (Case Form   Patient Tab   Pregnancy Details).   |
| #TOTAL_CASES_FREQUENCY_CAMINOR_PROSPECT      | The frequency of occurrence of cases where all of the following are true:<br>The patient is <i>Pregnant</i> .<br>The pregnancy type is <i>Prospective</i> .<br>The fetal outcome is <i>CA Minor</i> and <b>is not Normal</b> (Case Form   Patient Tab   Pregnancy Details).                     |
| #TOTAL_CASES_COUNT_PREMATURITY_PROSPECT      | Total # of Cases w/ProsPregnancy with premature birth type.   |
| #TOTAL_CASES_FREQUENCY_PREMATURITY_PROSPECT  | The frequency of occurrence of cases where all of the following are true:<br>The patient is <i>Pregnant</i> .<br>The pregnancy type is <i>Prospective</i> .<br>The birth type is <i>Premature</i> and the pregnancy type is <i>Prospective</i> (Case Form   Patient Tab   Pregnancy Details)    |
| #TOTAL_CASES_COUNT_STILLBIRTH_PROSPECT       | The total number of cases where all of the following are true:<br>The patient is <i>Pregnant</i> .<br>The pregnancy type is <i>Prospective</i> .<br>The birth type is <i>Still Birth</i> (Case Form   Patient Tab   Pregnancy Details).   |
| #TOTAL_CASES_FREQUENCY_STILLBIRTH_PROSPECT   | The frequency of occurrence of cases where all of the following are true:<br>The patient is <i>Pregnant</i> .<br>The pregnancy type is <i>Prospective</i> .<br>The birth type is <i>Still Birth</i> and the pregnancy type is <i>Prospective</i> (Case Form   Patient Tab   Pregnancy Details). |

| Variable  | Description   |
|---|---|
| #TOTAL_CASES_COUNT_PENDIN<br>GDELIVERY_RETRO              | The total number of cases where all of the following are true:<br>The patient is <i>Pregnant</i> .<br>The pregnancy type is <i>Retrospective</i> .<br>The delivery date is greater than the current date. (Case Form   Patient Tab   Pregnancy Details)<br>If delivery date is not entered, the application ignores the case.   |
| #TOTAL_CASES_COUNT_ELECTI<br>VETERMINATIONS_RETRO         | The total number of cases where all of the following are true:<br>The patient is <i>Pregnant</i> .<br>The pregnancy type is <i>Retrospective</i> .<br>The birth type is <i>Elective Termination</i> (Case Form   Patient Tab   Pregnancy Details)".   |
| #TOTAL_CASES_COUNT_SPONT<br>ANEOUSABORTIONS_RETRO         | The total number of cases where all of the following are true:<br>The patient is <i>Pregnant</i> .<br>The pregnancy type is <i>Retrospective</i> .<br>The birth type is <i>Spontaneous Abortion</i> (Case Form   Patient Tab   Pregnancy Details).  |
| #TOTAL_CASES_FREQUENCY_S<br>PONTANEOUSABORTIONS_RETR<br>O | The frequency of occurrence in cases where all of the following are true:<br>The patient is <i>Pregnant</i> .<br>The pregnancy type is <i>Retrospective</i> .<br>The birth type is <i>Spontaneous</i> and the pregnancy type is either <i>Prospective</i> or <i>Retrospective</i> .<br>Computed as:<br>(<br>#TOTAL_CASES_COUNT_SPONTANEOUSABORTIONS_RET<br>RO /<br>(#TOTAL_CASES_PROSPECT_PREGNANCY+#TOTAL_CASE<br>S_RETRO_PREGNANCY)". |
| #TOTAL_CASES_COUNT_NORMA<br>LOUTCOME_RETRO                | The total number of cases where all of the following are true:<br>The patient is <i>Pregnant</i> .<br>The pregnancy type is <i>Retrospective</i> .<br>The fetal outcome is <i>Normal</i> (Case Form   Patient Tab   Pregnancy Details).   |
| #TOTAL_CASES_COUNT_FOLLO<br>WUPLOST_RETRO                 | The total number of cases where all of the following are true:<br>The patient is <i>Pregnant</i> .<br>The pregnancy type is <i>Retrospective</i> .<br>The birth type is <i>Lost to F/U</i> (Case Form   Patient Tab   Pregnancy Details).   |
| #TOTAL_CASES_COUNT_FOLLO<br>WUPDONE_RETRO                 | The total number of cases where all of the following are true:<br>The patient is <i>Pregnant</i> .<br>The pregnancy type is <i>Retrospective</i> .<br>The birth type is <b>is not</b> <i>Lost to F/U</i> (Case Form   Patient Tab   Pregnancy Details).   |

| Variable                                 | Description   |
|--|---|
| #TOTAL_CASES_COUNT_ABNORMALOUTCOME_RETRO | The total number of cases where all of the following are true:<br>The patient is <i>Pregnant</i> .<br>The pregnancy type is <i>Retrospective</i> .<br>The fetal outcome is <b>is not Normal</b> (Case Form   Patient Tab   Pregnancy Details).  |
| #TOTAL_CASES_COUNT_CAMAJOR_RETRO         | The total number of cases where all of the following are true:<br>The patient is <i>Pregnant</i> .<br>The pregnancy type is <i>Retrospective</i> .<br>The fetal outcome is <i>CA Major</i> (Case Form   Patient Tab   Pregnancy Details).   |
| #TOTAL_CASES_FREQUENCY_CAMAJOR_RETRO     | The frequency of occurrence of cases where all of the following are true:<br>The patient is <i>Pregnant</i> .<br>The pregnancy type is <i>Retrospective</i> .<br>The fetal outcome is <i>CA Major</i> and <b>is not Normal</b> (Case Form   Patient Tab   Pregnancy Details).                   |
| #TOTAL_CASES_COUNT_CAMINOR_RETRO         | The total number of cases where all of the following are true:<br>The patient is <i>Pregnant</i> .<br>The pregnancy type is <i>Retrospective</i> .<br>The fetal outcome is <i>CA Minor</i> (Case Form   Patient Tab   Pregnancy Details).   |
| #TOTAL_CASES_FREQUENCY_CAMINOR_RETRO     | The frequency of occurrence of cases where all of the following are true:<br>The patient is <i>Pregnant</i> .<br>The pregnancy type is <i>Retrospective</i> .<br>The fetal outcome is <i>CA Minor</i> and <b>is not Normal</b> (Case Form   Patient Tab   Pregnancy Details).                   |
| #TOTAL_CASES_COUNT_PREMATURITY_RETRO     | The total number of cases where all of the following are true:<br>The patient is <i>Pregnant</i> .<br>The pregnancy type is <i>Retrospective</i> .<br>The birth type is <i>Premature</i> (Case Form   Patient Tab   Pregnancy Details).   |
| #TOTAL_CASES_FREQUENCY_PREMATURITY_RETRO | The frequency of occurrence of cases where all of the following are true:<br>The patient is <i>Pregnant</i> .<br>The pregnancy type is <i>Retrospective</i> .<br>The birth type is <i>Premature</i> and the pregnancy type is <i>Prospective</i> (Case Form   Patient Tab   Pregnancy Details). |
| #TOTAL_CASES_COUNT_STILLBIRTH_RETRO      | The total number of cases where all of the following are true:<br>The patient is <i>Pregnant</i> .<br>The pregnancy type is <i>Retrospective</i> .<br>The birth type is <i>Still Birth</i> (Case Form   Patient Tab   Pregnancy Details).   |

| Variable                                     | Description   |
|--|---|
| #TOTAL_CASES_FREQUENCY_S<br>TILLBIRTH_RETRO  | The frequency of occurrence of cases where all of the following are true:<br>The patient is <i>Pregnant</i> .<br>The pregnancy type is <i>Retrospective</i> .<br>The birth type is <i>Still Birth</i> and the pregnancy type is <i>Prospective</i> (Case Form   Patient Tab   Pregnancy Details). |
| #TOTAL_CASES_COUNT_CA_ALL                    | The total number of cases where both of the following are true:<br>The patient is <i>Pregnant</i> .<br>The fetal outcome is either <i>CA Major</i> OR <i>CA Minor</i> (Case Form   Patient Tab   Pregnancy Details).  |
| #TOTAL_CASES_COUNT_PERINATAL_PROSPECT        | The total number of cases where all of the following are true:<br>The patient is <i>Pregnant</i> .<br>The pregnancy type is <i>Prospective</i> .<br>The fetal outcome is <i>Perinatal complication</i> (Case Form   Patient Tab   Pregnancy Details).   |
| #TOTAL_CASES_COUNT_PERINATAL_RETRO           | The total number of cases where all of the following are true:<br>The patient is <i>Pregnant</i> .<br>The pregnancy type is <i>Retrospective</i> .<br>The fetal outcome is <i>Perinatal complication</i> (Case Form   Patient Tab   Pregnancy Details).   |
| #TOTAL_CASES_COUNT_POSTNATAL_PROSPECT        | The total number of cases where all of the following are true:<br>The patient is <i>Pregnant</i> .<br>The pregnancy type is <i>Prospective</i> .<br>The fetal outcome is <i>Post-perinatal complication</i> (Case Form   Patient Tab   Pregnancy Details).  |
| #TOTAL_CASES_COUNT_POSTNATAL_RETRO           | The total number of cases where all of the following are true:<br>The patient is <i>Pregnant</i> .<br>The pregnancy type is <i>Retrospective</i> .<br>The fetal outcome is <i>Post-perinatal complication</i> (Case Form   Patient Tab   Pregnancy Details).                                      |
| #TOTAL_CASES_COUNT_PEDIATRICS                | The total number of cases where both of the following are true:<br>The patient's age group has been selected<br>The group has been configured with the E2B codes of either 1,2 or 3 in list maintenance.  |
| #SOC_NAME_TOP_PEDIATRICS(x)<br>)             | The SOC with the largest number based on the level specified where the patient's age group is with the E2B code value of 1,2 or 3 in list maintenance.  |
| #SOC_COUNT_TOP_PEDIATRICS(x)<br>S(x)         | The largest number of SOC based on the level specified where the patient's age group is with the E2B code value of 1,2 or 3 in list maintenance.  |
| #SOC_FREQUENCY_TOP_PEDIATRICS(x)<br>TRICS(x) | The frequency of occurrence of events in the SOC that has the xth highest occurrence in pediatrics (E2B code of 1, 2 or 3 in list maintenance).   |
| #TOTAL_CASES_COUNT_ELDERLY                   | The total number of cases where both of the following are true:<br>The patient's age group has been selected<br>The group has been configured with the E2B codes of 6 in list maintenance.  |



| Variable                      | Description   |
|-------------------------------|---|
| #SOC_NAME_TOP_ELDERLY(x)      | The SOC with the largest number based on the level specified where the patient's age group is with the E2B code value of 6 in list maintenance. |
| #SOC_COUNT_TOP_ELDERLY(x)     | The largest number of SOC based on the level specified where the patient's age group is with the of 6 in list maintenance.                      |
| #SOC_FREQUENCY_TOP_ELDERLY(x) | The frequency of occurrence of events in the SOC that has the xth highest occurrence in pediatrics (E2B code of 6 in list maintenance).         |
| #DEV_INTERNATIONAL_BIRTHDATE  | The DIBD date of the product.   |

## Using Explicit Variables

*Explicit variables* are not available in the Oracle Argus Safety database and require the script author to populate them manually using such methods as free text entry, yes/no options, multiple options, etc. There are two kinds of explicit variables:

- Declared Variables <var>
- Author Questions <q>

## Using Declared Variables <var>

The *VAR* (variable element) enables the template author to define logical storage for variables that are defined and used in the template. When using declared variables, be aware of the following:

- A declared variable is valid **only** for the template in which it is declared.
- Unless a new value is specifically assigned to the variable, the parser uses the declared value of the variable as VAR1 throughout the template.
- Names can be a maximum of 50 characters.
- Values can be a maximum of 10,000 characters.
- All declared variables are case-sensitive.
- All variables must be enclosed in curly braces ( { . . . } ) in the script.
- The application **does not** process the VAR value but replaces it in its place holder. Consider the following example:  
<var name = "var1">nn</var>

where:

*var1* is the name of the variable

*nn* is the value if the variable

## Using Author Questions <q>

Use the *QUESTION* ( <q> ) element to capture information from the author of the report. When using the QUESTION element, be aware of the following:

- All question elements must begin with <q name=" "> and end with </q>.

- The application uses the *name* element as a variable to hold the value of the answer provided by the author of the report.
- When using the DISPLAY node, be aware of the following:
  - The system uses the DISPLAY node containing the text to display as the question to the author.
  - All DISPLAY elements must with `<display>` and end with `</display>`.
- When using the OPTIONS node, be aware of the following:
  - The application uses the OPTIONS node to:
    - Present pre-defined multiple answers to the author. All OPTIONS elements must start with `<options>` and end with `</options>`.
    - Represent a single pre-defined answer.
  - The total character limit is 1,000 characters across all options.
  - All OPTION elements must start with `<option>` and end with `</option>`.
  - All OPTION values display in drop-down lists. The application truncates the option value after 160 characters.
  - If no OPTIONS are used, with the `<q>` operand, the application will present a free text field to the author to enter any value. The character limit for free text entries is 10,000.
- You **cannot** use variables as a part of DISPLAY or OPTION.
- All declared variables are case-sensitive.

Consider the following usage example:

```
<q name="q1"> <display>What is your favorite color?</display> <options>
<option>Some Value 1</option> <option>Some Value 2</option> </options>
```

## Using Operands

*Operands* enable you to define logical template processing using the following statement types:

- `<if>`, `<then>`, `<else>`
- `<narrative>`
- `<include>`
- `<comment>`
- `<write>`

## Using the `<if>` `<then>` `<else>` Statement

The basic syntax for the `<if>` `<then>` `<else>` statement is as follows:

```
<if> . . . </if> <cond> . . . </cond> <then> . . . </then> <else> . . . </else>
```

The following general rules govern the use of the `<if>` `<then>` `<else>` statement:

The application ignores any statements inside `<if>...</if>` but not inside either `<then>...</then>` or `<else>...</else>`.

All `<if>` statements must be followed by a `<then>` statement.

Usage of the <else> statement is optional.

You must enclose pre-defined values in double-quotes.

The <then> and <else> nodes assign values to VAR or NARRATIVE.

**Do not use operator symbols** (>, <, >=, or <=) in text within the conditional statements. Instead, use HTML encoded formats as follows:

| For this operator | Use this HTML encoded format |
|-------------------|------------------------------|
| <                 | &lt;                         |
| >                 | &gt;                         |
| <=                | &lt;=                        |
| >=                | &gt;=                        |

In the following example, the statement checks the value of Q1. If Q1 is equal to 3, then the application assigns the a value of 4 to VAR1. Otherwise, it assigns the string value for the narrative NAR1.

```
<if> <cond>Q1="3"</cond> <then><let>VAR1="4"</let></then> <else><let>{NAR1}="There were no cases related to {#TRADE_NAME}"</let></else> </if>
```

The following table lists and describes how to use each of the elements in the template script.

| Element Name | Syntax           | Usage Rules   |
|--------------|------------------|---|
| IF           | <if> . . . </if> | Use the IF element or condition to logically direct template processing flow.<br>IF elements must begin with <if> and end with </if>. |

| Element Name | Syntax               | Usage Rules   |
|--------------|----------------------|---|
| COND         | <cond> . . . </cond> | <p>Use the COND node to evaluate a logical Boolean based on the following operations:</p> <p>Equals To: =</p> <p>Not Equal To: !=</p> <p>Greater Than: &gt;</p> <p>Greater Than or Equal To: &gt;=</p> <p>Less Than: &lt;</p> <p>Less Than or Equal to: &lt;=</p> <p>Logical AND: AND</p> <p>Logical OR: OR</p> <p>Each operator in a condition can be:</p> <p>Declared in the template</p> <p>A constant placed within quotation marks ( " ")</p> <p>An implicit variable</p> <p>Use the AND or OR logical operators to combine multiple conditions and to evaluate a combined result.</p> <p>Enclose each condition in parentheses [ ( . . . ) ] to separate them</p> <p>The application evaluates the combined conditions from left to right</p> <p>All COND elements must start with &lt;cond&gt; and end with &lt;/cond&gt;.</p> |
| THEN         | <then> . . . </then> | <p>If the specified condition is TRUE, the application executes the THEN block.</p> <p>This block can have single or multiple instruction tags including &lt;if&gt; . . . &lt;/if&gt;.</p> <p>All THEN elements must start with &lt;then&gt; and end with &lt;/then&gt;.</p>  |
| ELSE         | <else> . . . </else> | <p>If the specified condition is FALSE, the application executes the ELSE block.</p> <p>The ELSE block can have single or multiple instruction tags including &lt;if&gt; . . . &lt;/if&gt;.</p> <p>All ELSE elements must start with &lt;else&gt; and end with &lt;/else&gt;.</p>   |
| LET          | <let> . . . </let>   | <p>Use the LET element to assign a value to a variable or a narrative.</p> <p>The value you assign must be enclosed in double quotes ( "VAR1" ) and can be one of the following:</p> <p>A string with variables</p> <p>Another variable</p> <p>Use the &lt;var&gt; or &lt;narrative&gt; tag to declare the variable before assigning it.</p>  |

| Element Name | Syntax  | Usage Rules  |
|--------------|---|--|
| NARRATIVE    | <code>&lt;narrative&gt; . . . &lt;/narrative&gt;</code> | <p>Use the NARRATIVE element to assign pre-defined paragraphs.</p> <p>NARRATIVE values can be a maximum of 10,000 characters.</p> <p>All NARRATIVE elements must start with <code>&lt;narrative&gt;</code> and end with <code>&lt;/narrative&gt;</code>.</p> <p>You can include variables or other elements in the NARRATIVE. During processing, the application replaces these variables or other elements with their current values.</p> <p>Use one of these tags to declare all user-defined narrative variables used in the template.</p> <p>Use one of the following methods to assign a value when declaring the variable:</p> <pre data-bbox="987 751 1365 835">&lt;narrative name ="nar1"&gt; This is a paragraph for patient history . . . . &lt;/narrative&gt;</pre> <pre data-bbox="987 846 1398 867">&lt;narrative name = "nar1"&gt; &lt;/narrative&gt;</pre> <p>Let {nar1}= "This is a paragraph for patient history . . . . " &lt;/let&gt;</p> |

| Element Name | Syntax              | Usage Rules   |
|--------------|---------------------|---|
| INCLUDE      | <include name=" "/> | <p>Use the INCLUDE element to include the contents of an existing RTF document in a report during the template build process.</p> <p>All INCLUDE elements must be written in the following manner:<br/>&lt;include name " "/&gt;.</p> <p>The source files can be Argus reports or user-created custom reports that have been created off line and uploaded to the server in the Other Content section of the View ePSUR screen.</p> <p>Periodic reports support the page layouts for the source documents. For example, the application retains a landscape layout in the resulting document.</p> <p>The name of the files must exactly match the name specified in the report configuration (View ePSUR Template screen).</p> <p>You can include files in one of the following sections of the output document:</p> <ul style="list-style-type: none"> <li>Line Listing</li> <li>Summary Tabulation</li> <li>UD Summary</li> <li>Other Content</li> </ul> <p>If the file you are including is from the Other Contents section, the file name must have an RTF extension.</p> <p>You must use Microsoft Word or another tool to convert document files to RTF format. For example, &lt;include name = "CDA-PSUR1.rtf"/&gt;</p> <p>All files in the Other Contents section must have unique names.</p> <p><b>Do not</b> use the same filename in the &lt;include&gt; tag more than once in a single configuration. This can cause processing error. If you need to include the same content more than once, add multiple files with the same content and different filenames and &lt;include&gt; tags.</p> <p>Argus-generated include files (Line Listing, Summary Tabulation, and reports in UD Summary) <b>must not</b> have an extension and <b>must</b> be exactly as displayed on the View ePSUR screen.</p> <p>For example: &lt;include name = "List Listing"/&gt;</p> |

| Element Name | Syntax  | Usage Rules  |
|--------------|---|--|
| COMMENT      | <code>&lt;comment&gt; . . . &lt;/comment&gt;</code> | <p>Use the COMMENT element to provide the report author with instructions for editing the report.</p> <p>All COMMENT elements must start with <code>&lt;comment&gt;</code> and end with <code>&lt;/comment&gt;</code>.</p> <p>The comment text:</p> <p>Remains in the report until the report is published. When the report is published, the application removes the comment.</p> <p><b>Will not</b> be used to replace any variables, if used.</p> <p>Usage Example</p> <pre>&lt;comment&gt;Please review the document and verified top 5 BODY systems affected.&lt;/ comment&gt;</pre>  |
| WRITE        | <code>&lt;write&gt; . . . &lt;/write&gt;</code>     | <p>The WRITE elements output content to the RTF document.</p> <p>All WRITE elements must start with <code>&lt;write&gt;</code> and end with <code>&lt;/write&gt;</code>.</p> <p>The application applies formatting defined in the <code>&lt;write&gt; . . . &lt;/write&gt;</code> tags to the content of the output document.</p> <p>Usage Example</p> <pre>&lt;write&gt;example text to be written&lt;/write&gt;</pre> <p>OR</p> <pre>&lt;write&gt; The following paragraph has {VAR1} cases&lt;/write&gt;</pre> <p>OR</p> <pre>&lt;write&gt;{NAR1}&lt;/write&gt;</pre> <p>where:</p> <p>NAR 1 is a previously declared narrative and the content of NAR 1 is written to the document</p> |

## Using Nested Questions

When using nested questions, be aware of the following:

- You can up to five (5) levels of nested questions.
- You can include questions in the ELSE (`<else>..</else>`) statement.
- If a question is to be nested, it must include a condition. The condition:
  - **Cannot** include a logical operator (AND/OR)
  - Must have a question variable (`<q>`) as one of the operands.
  - Must include both a question variable and a constant (e.g., `<cond>{q1}="Yes"</cond>`)

## Template Writing Quick Reference

| Element Type       | Usage Rules   | Usage Examples   |
|--------------------|---|--|
| Explicit Variables | <p>Must be declared in the document using &lt;var&gt;, &lt;narrative&gt; or &lt;q&gt; tags</p> <p>Must be enclosed in curly braces ( { . . . } ) when used in the script</p>  | <p>Correct usage:</p> <pre>&lt;var name="var1"&gt;10&lt;/var&gt; &lt;write&gt;{var1}&lt;/write&gt; &lt;cond&gt;{var1}="4"&lt;/cond&gt; &lt;let&gt;{var1}</pre> <p>Incorrect Usage</p> <pre>{var1 + var2} &lt;write&gt;{var1, var2}&lt;/write&gt;</pre>   |
| Implicit Variables | <p>These variables are available in Oracle Argus Safety and are always based on the cases in a specific periodic report, as configured</p> <p>Must start with a pound ( # ) sign (e.g., #total_cases_soc)</p> <p>Must be enclosed in curly braces ( { . . . } ) when used in the script</p> | <p>Correct Usage:</p> <pre>&lt;write&gt;{#report_number}&lt;/write&gt; &lt;write&gt;Total Cases for Cardiac disorders are {#total_cases_soc("Cardiac disorders")}&lt;/write&gt; &lt;write&gt;{#soc_pt_count_top(3,1) }&lt;/write&gt;</pre> <p>Incorrect Usage:</p> <pre>&lt;let&gt;{#report_number}="10"&lt;/let&gt;</pre> |