

# Oracle® Hospitality Cruise Shipboard Property Management System CARICOM Interface User Guide



Release 20.2  
F44432-03  
December 2023

The Oracle logo, consisting of a solid red square with the word "ORACLE" in white, uppercase, sans-serif font centered within it.

ORACLE®

Oracle Hospitality Cruise Shipboard Property Management System CARICOM Interface User Guide, Release 20.2

F44432-03

Copyright © 1995, 2023, Oracle and/or its affiliates.

This software and related documentation are provided under a license agreement containing restrictions on use and disclosure and are protected by intellectual property laws. Except as expressly permitted in your license agreement or allowed by law, you may not use, copy, reproduce, translate, broadcast, modify, license, transmit, distribute, exhibit, perform, publish, or display any part, in any form, or by any means. Reverse engineering, disassembly, or decompilation of this software, unless required by law for interoperability, is prohibited.

The information contained herein is subject to change without notice and is not warranted to be error-free. If you find any errors, please report them to us in writing.

If this is software, software documentation, data (as defined in the Federal Acquisition Regulation), or related documentation that is delivered to the U.S. Government or anyone licensing it on behalf of the U.S. Government, then the following notice is applicable:

U.S. GOVERNMENT END USERS: Oracle programs (including any operating system, integrated software, any programs embedded, installed, or activated on delivered hardware, and modifications of such programs) and Oracle computer documentation or other Oracle data delivered to or accessed by U.S. Government end users are "commercial computer software," "commercial computer software documentation," or "limited rights data" pursuant to the applicable Federal Acquisition Regulation and agency-specific supplemental regulations. As such, the use, reproduction, duplication, release, display, disclosure, modification, preparation of derivative works, and/or adaptation of i) Oracle programs (including any operating system, integrated software, any programs embedded, installed, or activated on delivered hardware, and modifications of such programs), ii) Oracle computer documentation and/or iii) other Oracle data, is subject to the rights and limitations specified in the license contained in the applicable contract. The terms governing the U.S. Government's use of Oracle cloud services are defined by the applicable contract for such services. No other rights are granted to the U.S. Government.

This software or hardware is developed for general use in a variety of information management applications. It is not developed or intended for use in any inherently dangerous applications, including applications that may create a risk of personal injury. If you use this software or hardware in dangerous applications, then you shall be responsible to take all appropriate fail-safe, backup, redundancy, and other measures to ensure its safe use. Oracle Corporation and its affiliates disclaim any liability for any damages caused by use of this software or hardware in dangerous applications.

Oracle®, Java, and MySQL are registered trademarks of Oracle and/or its affiliates. Other names may be trademarks of their respective owners.

Intel and Intel Inside are trademarks or registered trademarks of Intel Corporation. All SPARC trademarks are used under license and are trademarks or registered trademarks of SPARC International, Inc. AMD, Epyc, and the AMD logo are trademarks or registered trademarks of Advanced Micro Devices. UNIX is a registered trademark of The Open Group.

This software or hardware and documentation may provide access to or information about content, products, and services from third parties. Oracle Corporation and its affiliates are not responsible for and expressly disclaim all warranties of any kind with respect to third-party content, products, and services unless otherwise set forth in an applicable agreement between you and Oracle. Oracle Corporation and its affiliates will not be responsible for any loss, costs, or damages incurred due to your access to or use of third-party content, products, or services, except as set forth in an applicable agreement between you and Oracle.

# Contents

Preface

---

Prerequisites, Supported Systems and Compatibility

---

1 System Configuration

---

2 Creating Arrival/Departure Notice

---

A Appendix

---

System Parameters

A-3

# Preface

The CARICOM module is a program that manages the electronic Notice of Arrival/Departure of vessel movement to the National Vessel Movement Centre (NVMC) outlined by The United States Coast Guard (USCG).

## Audience

This document is intended for Ship's System Administrator and/or Application Specialists of Oracle Hospitality Cruise Shipboard Property Management System (SPMS).

## Customer Support

To contact Oracle Customer Support, access the Customer Support Portal at the following URL:

<https://iccp.custhelp.com>

When contacting Customer Support, please provide the following:

- Product version and program/module name
- Functional and technical description of the problem (include business impact)
- Detailed step-by-step instructions to re-create
- Exact error message received
- Screen shots of each step you take

## Documentation

Oracle Hospitality product documentation is available on the Oracle Help Center at <http://docs.oracle.com/en/industries/hospitality/cruise.html>.

## Revision History

**Table 1 Revision History**

Date	Description of Change
September 2021	Initial publication.
March 2022	Made minor grammatical changes.
December 2023	Updated new customer portal.

# Prerequisites, Supported Systems and Compatibility

This section describes the minimum requirements for the CARICOM module.

## Prerequisites

- Administration.exe
- Crew.exe
- Caricom.exe
- Management.exe

## Supported Operating System

- See Compatibility Matrix at <http://docs.oracle.com/en/industries/hospitality/>. Select the release number and then select the Compatibility Matrix under the Deployment heading.

## Compatibility

Oracle Hospitality Cruise Shipboard Property Management System (SPMS) version 20.2 or later. For customers operating on version 20.2 and below, database upgrade to the recommended or latest version is required.

# 1

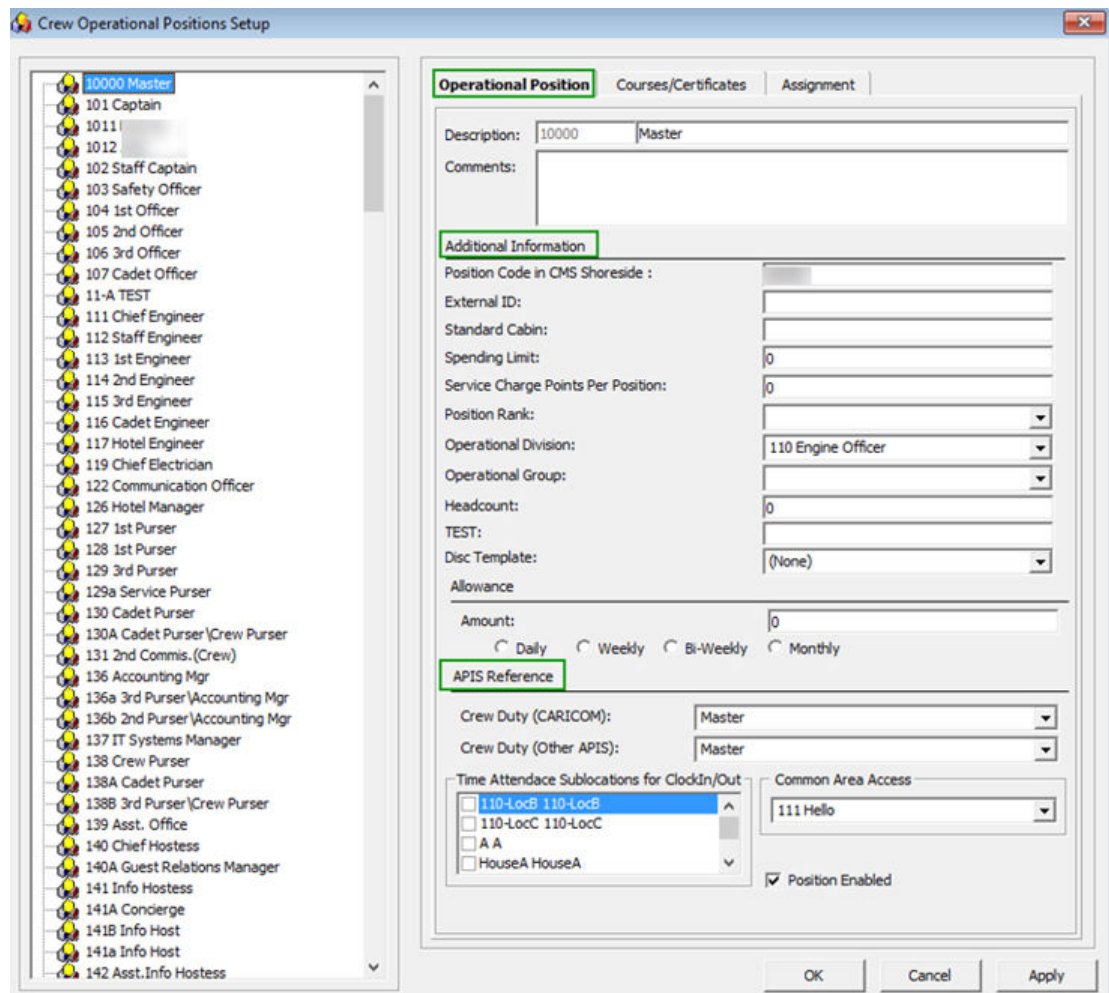
## System Configuration

This section describes the Operational Position Setup within the Administration module.

### Operational Position Setup

An Operational Position is required in the Advanced Passenger Information System (APIS) for references and reporting, which is set up in Administration module.

Figure 1-1 Crew Operational Position Setup



1. Log in to the **Administration** module and select **Crew Setup, Operational Position** from the drop-down list.
2. Right-click and select **Add** to create a new Operational Position or select from the existing list.

3. Navigate to the Operational Position tab and enter the **Position code**, **description**, and **comment**.
4. Under the **Additional Information** section, select the **Operational Division** from the drop-down list.
5. Under the **APIS Reference** section,
  - a. Define the Crew Duty (CARICOM) position
  - b. Define the Crew Duty (Other APIS) position
6. Click **OK** to save.

### APIS XML Setup

You must upload the related APIS XML files into the SPMS database. Refer to the following list of affected tables:

**Table 1-1 APIS File List**

Description	XML File	Table
Agency List	Agency_List.xml	SCA
CARICOM Port	CARICOMPORTS.xlsx	CCP
Crew Type List	Crew Type List	CWT
Foreign Port List	Foreign_Port_List.xml	FPL
International Ship Security Certificate Recognized Security Organization (RSO)	RSO.xml	RSO
Port Code	PortCode.csv	PCO
UK Port List	Port_UK_List.xml	UKP

1. Place all XML files in `\\Public Documents\Oracle Hospitality Cruise` folder for the respective data to be updated into the database.
2. The system prompts an error message when opening the CARICOM setup if a mismatch is found in the position or crew type maintained in the Administration module and the Crew Type.XML file.
3. Make sure all of the required Operational Positions are in the XML file before generating the report. Click **OK** to continue.
4. Review and correct all invalid data listed the log file.

**Figure 1-2 Sample Invalid Crew Record**

```

InvalCrewType.log - Notepad
File Edit Format View Help
07 Apr 2017 09:52:02

Full path of this log is at [REDACTED]

Following crew type(s) are not specified as per [REDACTED] .. Please correct and try again.

NOT PROVIDED =>      OPO record = 136b - 2nd Purser\Accounting Mgr
NOT PROVIDED =>      OPO record = 394 - Hostess\Immigration
NOT PROVIDED =>      OPO record = 846 - Tour Leader
NOT PROVIDED =>      OPO record = 297 - Electronic Tech.
NOT PROVIDED =>      OPO record = 511 - Bar Boy
NOT PROVIDED =>      OPO record = 271a - Waiter
NOT PROVIDED =>      OPO record = 272a - Asst. Waiter Room Serv.
NOT PROVIDED =>      OPO record = 273a - Asst. Maitre d'Hotel
NOT PROVIDED =>      OPO record = 138A - Cadet Purser
NOT PROVIDED =>      OPO record = 301a - F&B Manager - ICS Supervisor
NOT PROVIDED =>      OPO record = 365a - Coffemaker
NOT PROVIDED =>      OPO record = 266 - Captain Station IC
NOT PROVIDED =>      OPO record = 276 - Captain Station IG
NOT PROVIDED =>      OPO record = 285 - Captain Station CDM
NOT PROVIDED =>      OPO record = 286 - Captain Waiter
NOT PROVIDED =>      OPO record = 512 - Wine keeper
NOT PROVIDED =>      OPO record = 122 - Communication Officer
NOT PROVIDED =>      OPO record = 219 - Night supervisor
NOT PROVIDED =>      OPO record = 306 - Yeoman
NOT PROVIDED =>      OPO record = 195A - Asst. Electronic Technician

```

**Ship Information Setup**

Before you are allowed to generate the report, you must set up the Ship information in the CARICOM application.



Figure 1-3 Standard Parameter Configuration Window

The screenshot shows the 'Standard Parameter Configuration' window with the 'Ship Information Setup' tab selected. The window is divided into several sections:

- Ship Details:** Includes fields for Ship Name (Demo ship), Call Sign, ID Type (IMO Number), ID Number, Flag, Owner, Operator, Class Society, and Charterer.
- Reporting Party:** Includes fields for Person Name (Demo Ship), Phone, Fax, E-Mail, and Company Name.
- 24-hour Ship Contact:** Includes fields for Name, Company, Phone, Fax, and E-Mail.
- Document Of Compliance Certificate:** Includes fields for Issue Date (2007-04-17), Expiration Date (2012-03-28), and Agency.
- Safety Management Certificate:** Includes fields for Issue Date (2005-09-27), Expiration Date (2010-09-27), and Agency.
- International Ship Security Certificate:** Includes fields for Issue Date (2005-11-24), ISSC Type, ISSC Type Desc, ISSC Flag Admin/RSO, CS Officer Name, CS Officer Phone, CS Officer Fax, CS Officer E-Mail, and checkboxes for Vessel Security Plan Implemented, Vessel Response Plan, and CVSSA Onboard. A VRP Number field is also present.

At the bottom right, there is a legend for '\* - Required Field' and 'OK' and 'Cancel' buttons.

1. Run the **CARICOM.exe**.
2. Select **CARICOM Setup** from the **CARICOM Transfer**.
3. At the **Ship Information Setup** tab, enter the ship's information.
4. Click **OK** to save.

### Port Setup

The Port Setup is differentiated by the symbols used and stored in the XML files. For example, the ISO Port Code for St Johns has “^” and “<”. This means the ISO Port is shown in the **Standard Parameter Configuration, Harbours/Ports Setup, ISO Port Codes**, and **eNOAD Port**. See the following table and figures for symbols used in the port setup.

Figure 1-4 Harbours/Ports Setup

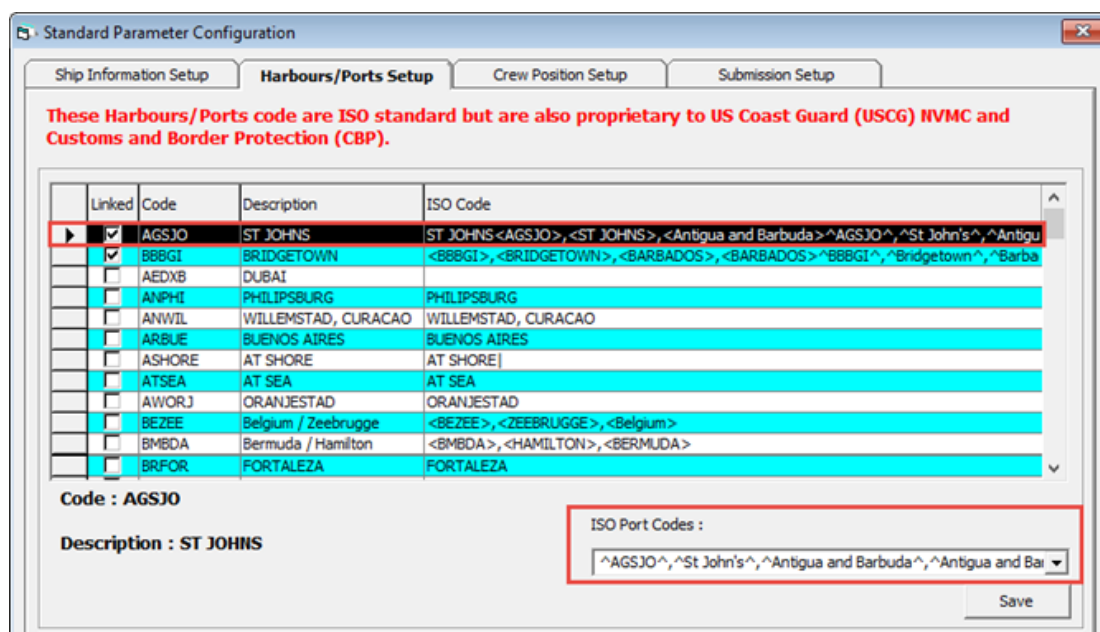


Table 1-2 APIS Port Type and Symbols

Port Type	Symbol
CARICOM Port	^
eNOAD Port	<
Panama Canal ADR Port	-
eBorder UK Port	#

### Submission Setup

Use the Submission Setup window to define the WebService Submission path and supports the manual report generation and online submission. You can obtain the URL from your agent/representative.

- Web Services Submission Token String
- Web Services Submission URL Address
- Web Services Submission SOAP Header
- Web Service Submission SOAP Action

### Transfer Folder Setup

A transfer folder is required when generating the report file. Manually create the folder and then enter the path in the **Parameter, File Output Folder** if you wish to save the file to a default location. If none is defined in the Parameter, the system defaults the folder to C:\Users\Public\Documents\Oracle Hospitality Cruise\[Folder].

If the Transfer folder does not exist, the system prompts an error message 'Invalid path [path]'.

## Document Type Setup

You must map the Document Types accepted in SPMS with the correct CARICOM code.

1. Log in to the **Administration module**.
2. Select **Administration, System Codes** and the **Document Types** from the menu option.
3. Select the Document and in the **APIS <ID\_TYPE> Mapping:** field, enter the hardcoded document type. See Document Type Mapping Field for more information.
4. Click **OK** to save.

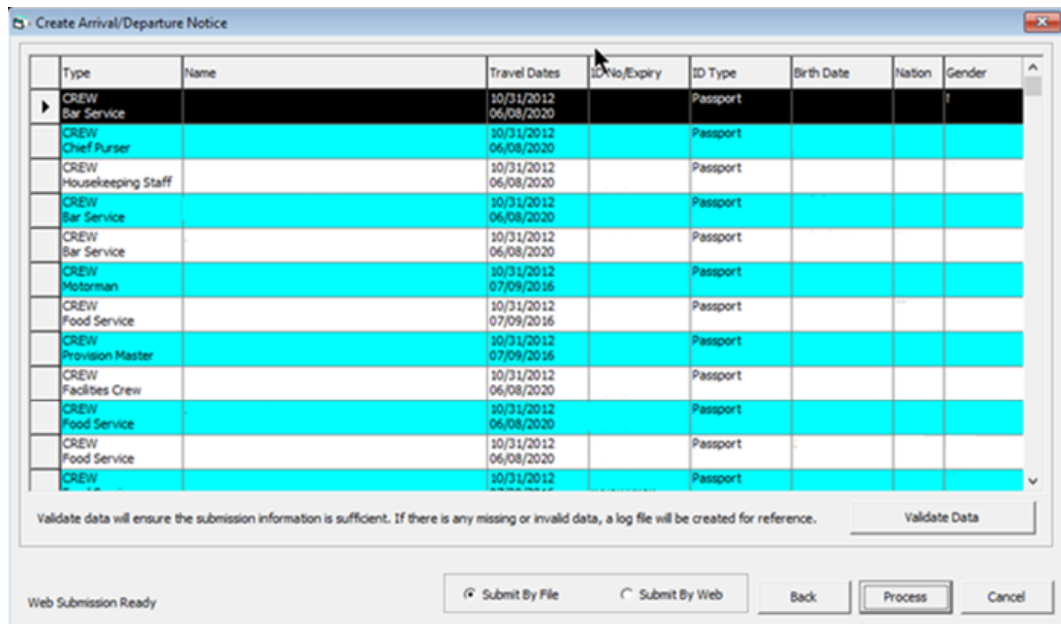
# 2

## Creating Arrival/Departure Notice

The following section describes the steps to create the CARICOM file for submission.

1. Run **CARICOM.exe**.
2. Select **CARICOM Transfer, CARICOM File Creation** from the menu option.
3. At the Create Arrival/Departure Notice screen, update all the fields required by CARICOM and then click **Next**.
4. Select and update all the mandatory fields in **Default Embarkation Port**, including the information of the previous five ports and then click **Next**.
5. At the result grid, click **Validate Data** to validate and ensure all information is sufficient for submission.

**Figure 2-1 Create Arrival/Departure Notice Validation**



6. The system creates and saves the log file to a user-defined local folder or network path folder defined in the parameter, if the information supplied is insufficient. Review the log file, correct all missing data and repeat the above step.
7. If all the mandatory information is supplied and the data validation completes successfully, the systems prompt a confirmation message "There is no missing/incorrect data. Do you wish to proceed to file submission?".
8. Click **Yes** on the confirmation prompt to continue.
9. Choose to either submit the report by file or web and then click **Process**.

10. The system prompts a message box once the submission is successful. Click **OK** to close the screen.

# A

## Appendix

The following section lists the mapping codes available to CARICOM and the user access rights.

### Document Type Mapping Fields

**Table A-1 CARICOM Document Type**

Code	Description	Document Types
A	Alien Registration Card	U.S. Alien Registration Card
B	Birth Certificate	Birth Certificate
CCERT	Crew Member Certificate	Government Issued Picture ID(US)
CP	CARIPASS CARD	(**only for CARICOM)
CRBA	Consular Report of Birth Abroad	Consular Report of Birth Abroad
D	Driver License	Government Issued Picture ID(US)
DIPID	Diplomatic Identification	Government Issued Picture ID(US)
EDL_BC	Enhanced Driver's License (BC)	EDL (BC)
EDL_MB	Enhanced Driver's License (MB)	EDL (MB)
EDL_MI	Enhanced Driver's License (MI)	EDL (MI)
EDL_NY	Enhanced Driver's License (NY)	EDL (NY)
EDL_ON	Enhanced Driver's License (ON)	EDL (ON)
EDL_QC	Enhanced Driver's License (QC)	EDL (QC)
EDL_VT	Enhanced Driver's License (VT)	EDL (VT)
EDL_WA	Enhanced Driver's License (WA)	EDL (WA)
F	Refugee Permit	Government Issued Picture ID(US)
FAST	FAST ID Type	FAST
FD	Facilitation Document (Deportee) or (Consular)	Facilitation Document (Deportee) or (Consular)
FMD	Foreign Mariner Document	Foreign Mariner Document
GLOENT	Global Entry	Global Entry
GP	Group Passport	Government Issued Picture ID(US)
I	Ins Pass Document	Government Issued Picture ID(US)
L	License	Pilot License
M	Military Id	Military ID

**Table A-1 (Cont.) CARICOM Document Type**

<b>Code</b>	<b>Description</b>	<b>Document Types</b>
MMC	U.S. Merchant Mariner Credential	U.S. Merchant Mariner Credential
MMD	Merchant Mariner Document	U.S. Merchant Mariner Document
N	National Picture ID	Government Issued Picture ID(US)
NEXUS	Nexus	Nexus
NTV_US	Native American	Native American
O	Certificate of Naturalization	Certificate of Naturalization
OD	Official Government Document	Official Government Document
P	Passport	Passport Number
PPC	Passport Card	Passport Card
R	Residence Permit	Residence Permit
RID	Regional ID	Government Issued Picture ID(US)
SENTRI	SENTRI	SENTRI
SFR	Seafarer's Identification Document	Seafarer's Identification Document
TP_RFG	TP - Refugee Travel Document	TP - Refugee Travel Document
TRANS	Transportation Worker Identification Credential	Transportation Worker Identification Credential
TRBC	Tribal Card (IC)	Tribal Card (IC)
TRBC2	Tribal Card (II)	Tribal Card (II)
TR_REE	TR - Permit to Re-enter	TR - Permit to Re-enter
TT	Travel Title	Government Issued Picture ID (US)
US_GID	Government Issued Picture ID (US)	Government Issued Picture ID (US)
US_PRC	U.S. Permanent Resident Card	U.S. Permanent Resident Card
CA_GID	Canada Government Issued Picture ID	Government Issued Picture ID (CANADA)
C	U.S. Government Issued Picture ID	Government Issued Picture ID (US)
V	U.S. Government Issued Picture ID	Government Issued Picture ID (US)

**User Access Rights****Table A-2 User Access Rights**

<b>Security Reference Number</b>	<b>Description</b>
3256	Ship Information Setup

**Table A-2 (Cont.) User Access Rights**

Security Reference Number	Description
3257	Harbour/Port Setup
3258	Crew Position Setup
3259	Submission Setup

## System Parameters

This section describes the available parameters for the CARICOM module. They are accessible in **Administration module, System Setup, Parameter**.

**Table A-3 PAR Group CARICOM**

PAR Name	PAR Value	Description
CARICOM Web Service SOAPAction	[website]	Web Service SOAP Action for the CARICOM System
CARICOM Web Service SOAPHeader	[website]	Web Service SOAP Header for the CARICOM System
CARICOM Web Service URL	[website]	Web Service URL for the CARICOM System
Default to FNU on blank UXP_A_FSTN or FIRST_NAME	1	1 – Enable. If the guest first name is null, it defaults the First Name field as “FNU” 0 – Disable. If disabled, the First Name field cannot be null
File Name of CARICOM PORT Setup File	CARICOMPORTS.xlsx	Support Excel file extension for XLS instead of XLSX.
File Output Folder	[path]	Allows output file to be saved to a user-defined folder. For example, C:\temp\xxxx\Caricom
Include VOYAGE_NUMBER During Submission		VOYAGE_NUMBER: 1=Time Stamp, 2=SCR_ITN_ID, Blank=NULL
Mandatory Birthdate Field	1	1 – Enable the birthdate field as mandatory 0 – Disable birthdate field for guests/crew handling
Mandatory Fields For <ARRIVE>	<element>	Specify the mandatory XML fields for <ARRIVE> element that CARICOM program will check during file creation. Use Comma Delimited Values. For example, ARRIVE_DT,ARRIVE_TIME,PORT_NAME,CITY,STATE,FACILITY,PLACE



**Table A-3 (Cont.) PAR Group CARICOM**

PAR Name	PAR Value	Description
Mandatory Fields For <CARGO>	<element>	Specify the mandatory XML fields for <CARGO> element that CARICOM program checks during file creation. Use Comma Delimited Values.  For example, GENERAL_DESC,CDC_ON_BOARD
Mandatory Fields For <COMP_CERT>	<element>	Specify the mandatory XML fields for <COMP_CERT> element that CARICOM program will check during file creation. Use Comma Delimited Values.  For example, ISSUED_DT,EXPIRATION_DT,AGENCY
Mandatory Fields For <CONTACT>	<element>	Specify the mandatory XML fields for <CONTACT> element that CARICOM program will check for during file creation. Use Comma Delimited Values.  For example, NAME,PHONE
Mandatory Fields For <CREW>	<element>	Specify the mandatory XML fields for <CREW> element that CARICOM program checks during file creation. Use Comma Delimited Values.  For example, POSITION,LAST_NAME,FIRST_NAME,BIRTH_DT,GENDER,NATIONALITY,NATIONALITY_CODE,COUNTRY_RESIDENCE_CODE,COUNTRY_RESIDENCE_CODE,ID_TYPE,ID_NUM,ID_COUNTRY,ID_COUNTRY_CODE,EMBARK_COUNTRY,EMBARK_COUNTRY_CODE,EMBARK_STATE,EMBARK_PORT_NAME,EMBARK_PORT_CODE,EMBARK_DATE
Mandatory Fields For <DEPART>	<element>	Specify the mandatory XML fields for <DEPART> element that CARICOM program will check during file creation. Use Comma Delimited Values.  For example, DEPART_DT,DEPART_TIME,PORT_NAME,CITY,STATE,PLACE

Table A-3 (Cont.) PAR Group CARICOM

PAR Name	PAR Value	Description
Mandatory Fields For <ISSC>	<element>	Specify the mandatory XML fields for <ISSC> element that CARICOM program will check during file creation. Use Comma Delimited Values.  For example, ISSUED_DT,VSP_IMPLEMENTATION,ISSC_TYPE,INTERIM_ISSC,FLAG_ADMINISTRATION,FLAG_ADMINISTRATION_CODE,C SO_NAME,CSO_PHONE
Mandatory Fields For <LAST_PORT>	<element>	Specify the mandatory XML fields for <LAST_PORT> element that CARICOM program checks during file creation. Use Comma Delimited Values.  For example, ARRIVE_DT,DEPARTURE_DT,L AST_PORT_COUNTRY,LAST_P ORT_COUNTRY_CODE,LAST_ PORT_STATE,LAST_PORT_NA ME,LAST_PORT_CODE,LAST_ PORT_PLACE
Mandatory Fields For <NEXT_PORT>	<element>	Specify the mandatory XML fields for <NEXT_PORT> element that CARICOM program checks during file creation. Use Comma Delimited Values.  For example, ARRIVE_DT,ARRIVE_TIME,NEX T_PORT_COUNTRY,NEXT_PO RT_COUNTRY_CODE,NEXT_P ORT_STATE,NEXT_PORT_NAM E,NEXT_PORT_CODE,NEXT_P ORT_PLACE
Mandatory Fields For <NONCREW>	<element>	Specify the mandatory XML fields for <NONCREW> element that CARICOM program checks during file creation. Use Comma Delimited Values.  For example, LAST_NAME,FIRST_NAME,BIR TH_DT,GENDER,NATIONALITY, NATIONALITY_CODE,COUNTR Y_RESIDENCE,COUNTRY_RE SIDENCE_CODE,ID_TYPE,ID_ NUM,ID_COUNTRY,ID_COUNT RY_CODE,ID_EXPIRATION_DT, US_ADDRESS_STREET,US_AD DRESS_CITY,US_ADDRESS_ZI P

**Table A-3 (Cont.) PAR Group CARICOM**

PAR Name	PAR Value	Description
Mandatory Fields For <NONCREW> 1	<element>	Specify the mandatory XML fields for <NONCREW> element that CARICOM program checks during file creation. Use Comma Delimited Values. (Continued)  For example, EMBARK_COUNTRY,EMBARK_COUNTRY_CODE,EMBARK_ST ATE,EMBARK_PORT_NAME,EMBARK_PORT_CODE,EMBARK_DATE
Mandatory Fields For <NOTICE_DETAILS>	<element>	Specify the mandatory XML fields for <NOTICE_DETAILS> element that CARICOM program checks during file creation. Use Comma Delimited Values  For example, CREATED_DATE_TIME,NOTICE_ID,NOTICE_TRANSACTION_T YPE,NOTICE_TYPE,VERSION
Mandatory Fields For <PREVIOUS_FOREIGN_PORT_LIST>	<element>	Specify the mandatory XML fields for <PREVIOUS_FOREIGN_PORT_LIST> element that CARICOM program checks during file creation. Use Comma Delimited Values.  For example, ARRIVAL_DT,DEPARTURE_DT,PREVIOUS_COUNTRY,PREVIOUS_COUNTRY_CODE,PREVIOUS_PORT_NAME,PREVIOUS_PORT_CODE,PREVIOUS_PLAC E
Mandatory Fields For <REPORTING_PARTY>	<element>	Specify the mandatory XML fields for <REPORTING_PARTY> element that CARICOM program checks during file creation. Use Comma Delimited Values.  For example, NAME,EMAIL,COMPANY
Mandatory Fields For <SFTYMGMT_CERT>	<element>	Specify the mandatory XML fields for <SFTYMGMT_CERT> element that CARICOM program checks during file creation. Use Comma Delimited Values.  For example, ISSUED_DT,EXPIRATION_DT,AGENCY

Table A-3 (Cont.) PAR Group CARICOM

PAR Name	PAR Value	Description
Mandatory Fields For <VESSEL>	<element>	Specify the mandatory XML fields for <VESSEL> element that CARICOM program checks during file creation. Use Comma Delimited Values.  For example, NAME,CALL_SIGN,ID_NUM,ID_TYPE,FLAG,FLAG_CODE,OWNER,OPERATOR,CLASS_SOCIETY,CHARTERER,OCE,OCE_DESC
Mandatory Fields For <VESSEL_LOC>	<element>	Specify the mandatory XML fields for <VESSEL_LOC> element that CARICOM program checks during file creation. Use Comma Delimited Values.  For example, LOCATION_DESC,LAT_HR,LAT_MIN,LAT_SEC,N_S,LONG_HR, LONG_MIN,LONG_SEC,E_W
Mandatory Fields For <VOYAGE>	<element>	Specify the mandatory XML fields for <VOYAGE> element that CARICOM program checks during file creation. Use Comma Delimited Values.  For example, VOYAGE_TYPE
Mandatory First Name Field	1	1 – Mandatory for First Name field for guests/crew handling 0 – Not mandatory
Mandatory Gender Field	1	1 - First Name Mandatory for expected crew or passengers 0 – Not mandatory for First Name  Only crew/passenger records that contain this information is included in CARICOM Manifest submission when expected crew/passenger is chosen during file creation.
Mandatory ID Field	1	1 - Passport (or other form of identification) is mandatory for expected crew or passengers. 0 – Not mandatory for passport  Only crew/passenger records that contain this information is included in CARICOM Manifest submission when expected crew/passenger is chosen during file creation.

**Table A-3 (Cont.) PAR Group CARICOM**

PAR Name	PAR Value	Description
Mandatory Last Name Field	1	1 - Last Name is mandatory for expected crew or passengers 0 – Not mandatory for last name Only crew/passenger records that contain this information is included in CARICOM Manifest submission when expected crew/passenger is chosen during file creation
Mandatory Nationality Field	1	1 - Nationality is mandatory for expected crew or passengers 0 – Not mandatory for nationality Only crew/passenger records that contain this information is included in CARICOM Manifest submission when expected crew/passenger is chosen during file creation.
Manifest Submission Tracker		If specified, it creates a Tracker File with matching XML file name, or else it defaults to save the file to C:\Users\Public\Documents\Oracle Hospitality\Cruise\CARICOM folder.
Source Column For Record Locator	<value>	Specifies the Database column used for <PASSENGER_RECORD_LOCATOR> For example, RES_ACC