

Oracle® Hospitality Cruise Shipboard Property Management System

POS Discount Handling



Release 20.2
F44457-04
December 2023

The Oracle logo, consisting of a solid red square with the word "ORACLE" in white, uppercase, sans-serif font centered within it.

ORACLE®

Copyright © 2020, 2023, Oracle and/or its affiliates.

This software and related documentation are provided under a license agreement containing restrictions on use and disclosure and are protected by intellectual property laws. Except as expressly permitted in your license agreement or allowed by law, you may not use, copy, reproduce, translate, broadcast, modify, license, transmit, distribute, exhibit, perform, publish, or display any part, in any form, or by any means. Reverse engineering, disassembly, or decompilation of this software, unless required by law for interoperability, is prohibited.

The information contained herein is subject to change without notice and is not warranted to be error-free. If you find any errors, please report them to us in writing.

If this is software, software documentation, data (as defined in the Federal Acquisition Regulation), or related documentation that is delivered to the U.S. Government or anyone licensing it on behalf of the U.S. Government, then the following notice is applicable:

U.S. GOVERNMENT END USERS: Oracle programs (including any operating system, integrated software, any programs embedded, installed, or activated on delivered hardware, and modifications of such programs) and Oracle computer documentation or other Oracle data delivered to or accessed by U.S. Government end users are "commercial computer software," "commercial computer software documentation," or "limited rights data" pursuant to the applicable Federal Acquisition Regulation and agency-specific supplemental regulations. As such, the use, reproduction, duplication, release, display, disclosure, modification, preparation of derivative works, and/or adaptation of i) Oracle programs (including any operating system, integrated software, any programs embedded, installed, or activated on delivered hardware, and modifications of such programs), ii) Oracle computer documentation and/or iii) other Oracle data, is subject to the rights and limitations specified in the license contained in the applicable contract. The terms governing the U.S. Government's use of Oracle cloud services are defined by the applicable contract for such services. No other rights are granted to the U.S. Government.

This software or hardware is developed for general use in a variety of information management applications. It is not developed or intended for use in any inherently dangerous applications, including applications that may create a risk of personal injury. If you use this software or hardware in dangerous applications, then you shall be responsible to take all appropriate fail-safe, backup, redundancy, and other measures to ensure its safe use. Oracle Corporation and its affiliates disclaim any liability for any damages caused by use of this software or hardware in dangerous applications.

Oracle®, Java, and MySQL are registered trademarks of Oracle and/or its affiliates. Other names may be trademarks of their respective owners.

Intel and Intel Inside are trademarks or registered trademarks of Intel Corporation. All SPARC trademarks are used under license and are trademarks or registered trademarks of SPARC International, Inc. AMD, Epyc, and the AMD logo are trademarks or registered trademarks of Advanced Micro Devices. UNIX is a registered trademark of The Open Group.

This software or hardware and documentation may provide access to or information about content, products, and services from third parties. Oracle Corporation and its affiliates are not responsible for and expressly disclaim all warranties of any kind with respect to third-party content, products, and services unless otherwise set forth in an applicable agreement between you and Oracle. Oracle Corporation and its affiliates will not be responsible for any loss, costs, or damages incurred due to your access to or use of third-party content, products, or services, except as set forth in an applicable agreement between you and Oracle.

Contents

Preface

1 MICROS POS Discount Setup

Setting Up POS Discount Key	1-2
Discount Itemizer Setting (PCWS)	1-3
MICROS ISL Script	1-4

2 POS Discount Setup

Setting Up MICROS Server Connection	2-1
POS Discount Level Setup	2-2
POS Discount Rate Setup	2-3
POS Discount Eligibility Setup	2-6
POS Discount Rate (Advance)	2-6

3 POS Discount Department

Assigning Discount Level in Management/Crew Module	3-2
--	-----

4 Assigning Discount Level in Quick Check-In Module

Importing Reservation with POS Discount Level using Data Import	4-1
---	-----

Preface

This guide explains Point-of-Sale (POS) Discounts, used in the Oracle Hospitality Cruise Shipboard Property Management System (SPMS). It uses the Advanced MICROS Interface to handle the loyalty discount program.

A discount is applied automatically when the discount level is set up. The guest check displays the net payable amount when a discount is applied at the MICROS outlet.

Audience

This document is intended for application specialists and users of Oracle Hospitality Cruise Shipboard Property Management System.

Customer Support

To contact Oracle Customer Support, access the Customer Support Portal at the following URL:

<https://iccp.custhelp.com>

When contacting Customer Support, please provide the following:

- Product version and program/module name
- Functional and technical description of the problem (include business impact)
- Detailed step-by-step instructions to re-create
- Exact error message received and any associated log files
- Screen shots of each step you take

Documentation

Oracle Hospitality product documentation is available on the Oracle Help Center at <http://docs.oracle.com/en/industries/hospitality/cruise.html>.

Revision History

Table 1 Revision History

Date	Description of Change
September 2021	Initial publication.
March 2022	Made minor grammatical changes.
October 2022	Updated the document with correct format.
December 2023	Updated new customer portal.

1

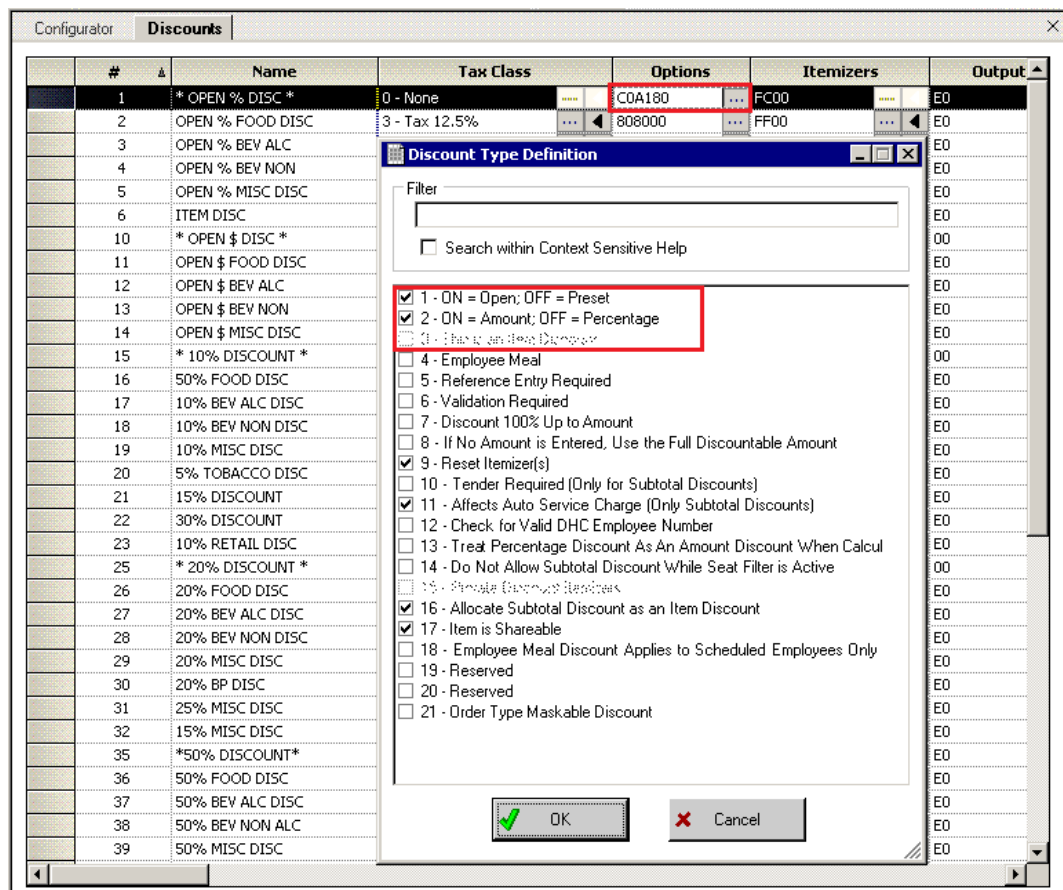
MICROS POS Discount Setup

The Hospitality Cruise Shipboard Property Management System (SPMS) uses Oracle MICROS POS to set up, manage, and apply a wide range of discounts to clients, crew, and others at the point of sale.

For the discount to work in Oracle MICROS POS, an additional setting at the MICROS Enterprise Management Console (EMC) is required. The following sections describe the requirement for each of the modules. Use the following steps for Discount Record Setup:

1. Log in to the **MICROS EMC** module and go to the **Configurator** menu.
2. Select **Discounts** from the **System Information** section.
3. Select a discount record that you want a POS discount to apply automatically on a guest check.
4. Under the **Option** column, click the **horizontal ellipsis (...)** button to open the **Discount Type Definition** window.
5. Select each check box as needed.

Figure 1-1 MICROS EMC Discount Record Setup

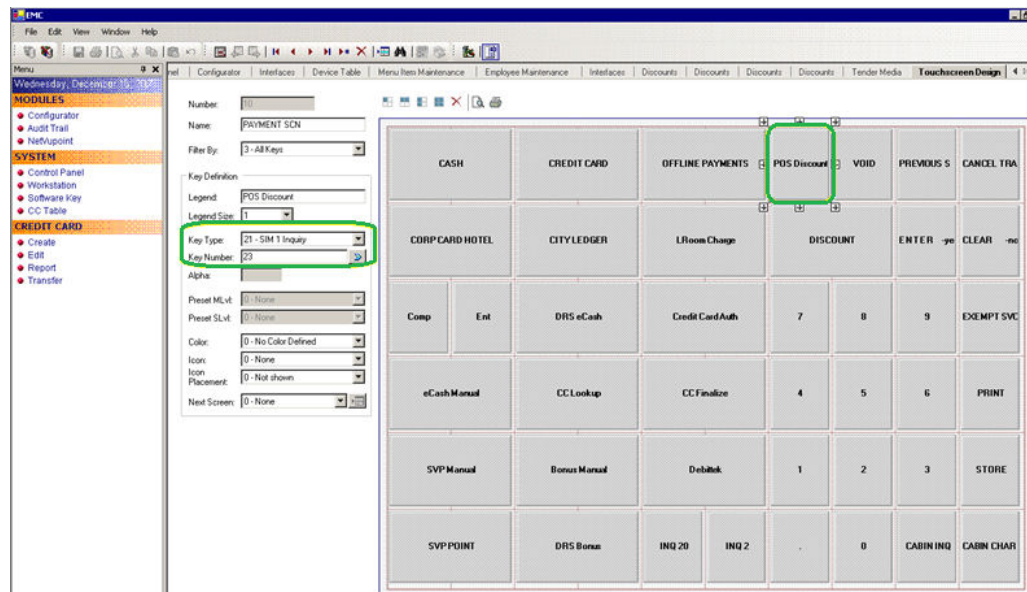


- 1 — ON = Open OFF (Selected)
 - 2 — ON = Amount OFF (Selected)
 - 3 — This is an Item Discount (Deselect)
6. Click **OK** to save.
 7. Launch the **Administration** module.
 8. Go to the Administration, POS Discount, POS Discount Rate (Advance) setup window.
 9. Expand the **Discount Rate**, select a **revenue center** and a **MICROS Discount Record (Only Open Amount Subtotal Discount)** from the drop-down list to link a discount record.
 10. Click **Apply** to save.

Setting Up POS Discount Key

In order to view the discount level entitlement and to automatically apply the discount on the guest check, a new payment key is needed at the POS workstation. This is created on the MICROS PCWS Payment window.

Figure 1-2 MICROS EMC Payment SCN Window



1. Log in to the **MICROS EMC** module and go to the **Configurator** menu.
2. From the Touchscreens and Keyboard section, select a **Workstations Design**.
3. Double-click the **Payment SCN** to open the Touchscreen Design window.
4. Enter a new **POS Discount** key on the **Payment** window and enter all of the required details.
5. Set the **Key Type** to **21 — SIM Inquiry** and enter the respective **inquiry type** using the following INQ numbers:

- **INQ 22:** Loyalty Discount — Net Off Manual Discount (Discount by itemizer)
- **INQ 23:** Advance Loyalty Discount — Net Off Manual Discount
- **INQ 24:** Loyalty Discount (Discount by itemizer)
- **INQ 25:** Advance Loyalty Discount

You can create four discount keys and assign them to a different discount handling.

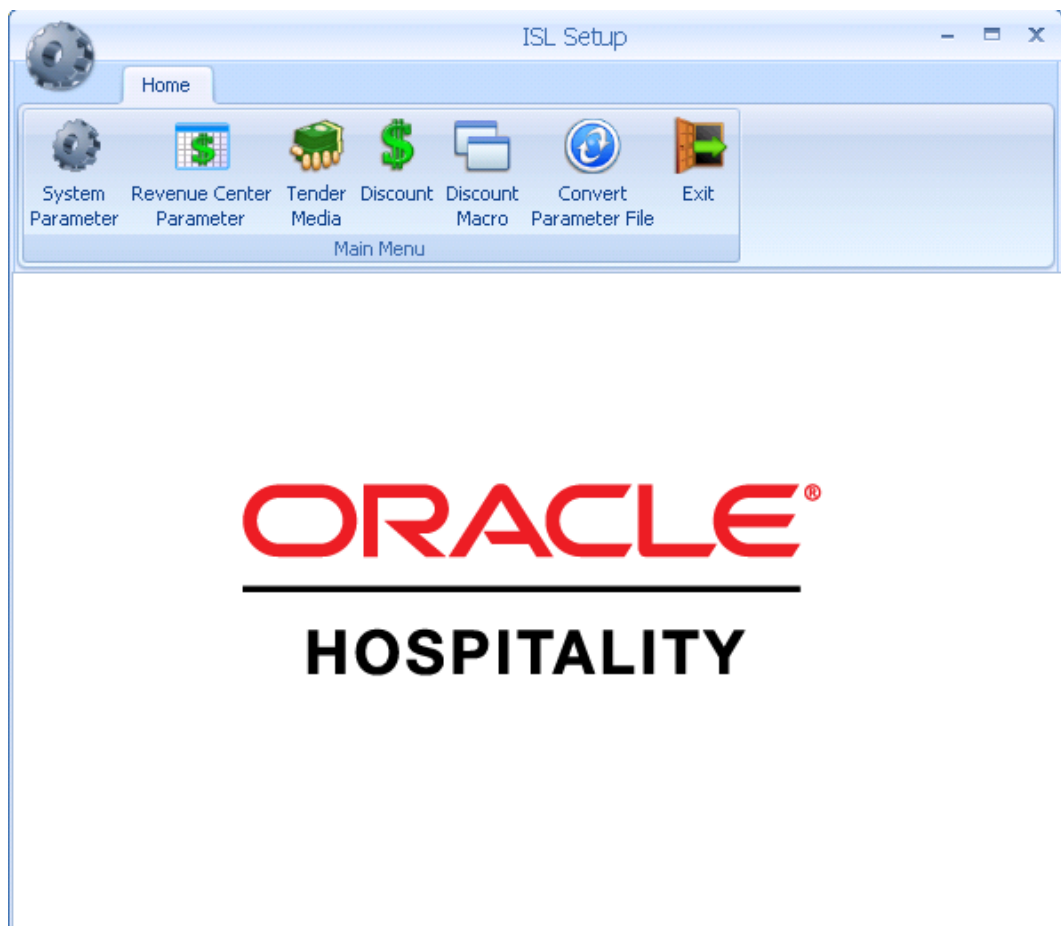
6. Click **OK** to save.

Discount Itemizer Setting (PCWS)

If you have a debit department code set up in the Administration module, you need to enable the POS Discount function and configure the discount itemizer for every MICROS Discount record in the ISL Setup.

1. Log in to the MICROS server
2. Go to the \\Micros\LES\POS\9700\etc folder.

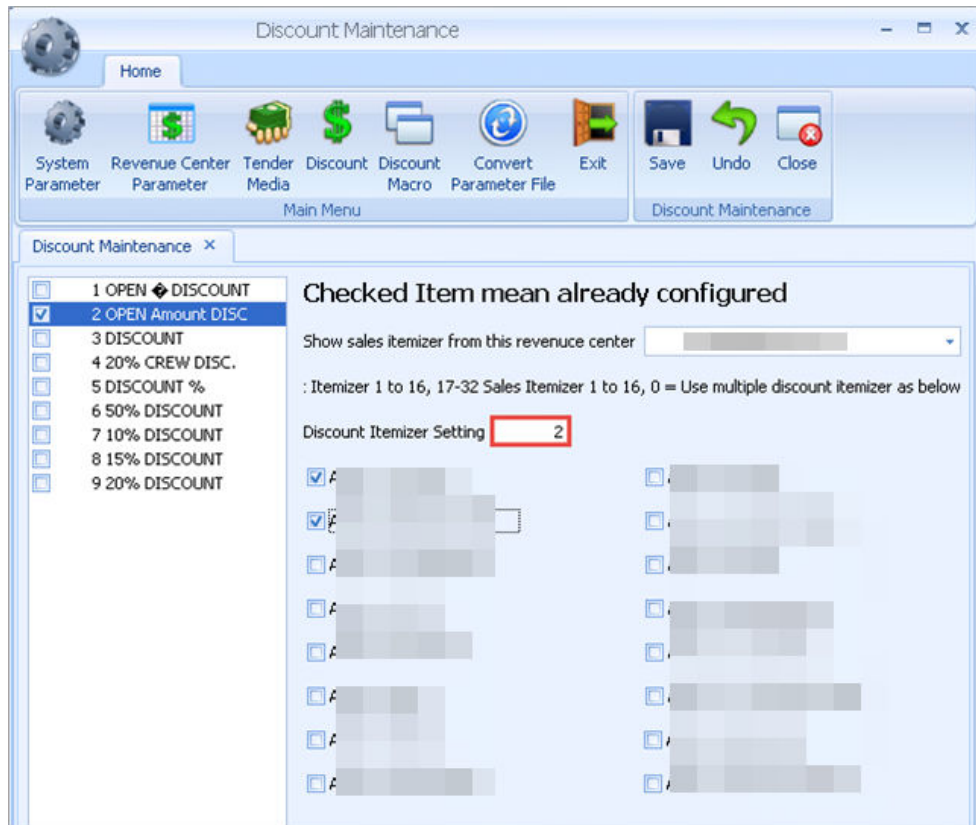
Figure 1-3 SPMS ISL Setup Window



3. Run **ISLSetup.exe**.
4. Click the **Discount** icon on the ribbon bar to open the Discount Maintenance window.

5. Select a discount record that has the **POS Discount set up** in the Administration module, **POS Discount Rate/POS Discount Rate (Advance)** setup.
6. Enter the **Discount Itemizer number** of the Revenue Center sub-department code (debit) in the Discount Itemizer Settings field.

Figure 1-4 ISL Discount Itemizer Setting



7. Select the applicable **Itemizer** checkbox and click **Save**.
8. Click **Close** to exit the ISL Setup.

MICROS ISL Script

You must have the appropriate ISL Script on the MICROS Server for the POS Discount Handling to work. Below is the script version compatible with SPMS.

Table 1-1 MICROS ISL Script

SPMS Product Version	MICROS ISL Script Version
8.0.x	1.30t

2

POS Discount Setup

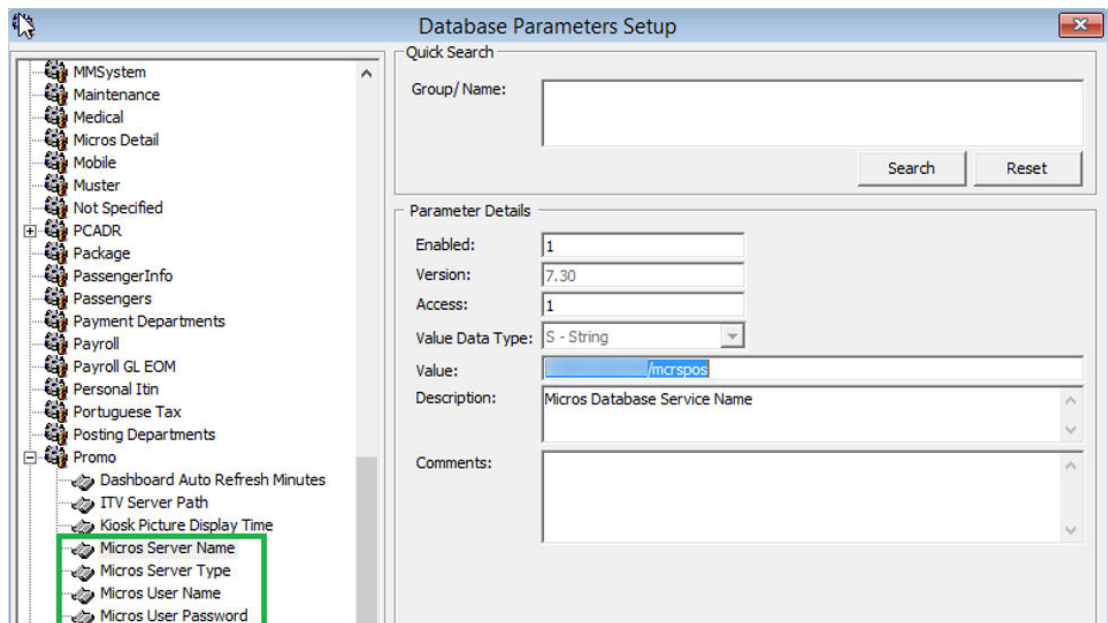
The following two methods are available for setting up the POS discount:

- A Basic Setup with discount applicable to the MICROS discount itemizer level.
- An Advance Setup with discount applicable to the MICROS major group, family group, and menu item level.

You can set up one or both methods to provide for different types of discounts. To configure the discounts, go to the **Administration module, POS Discount**.

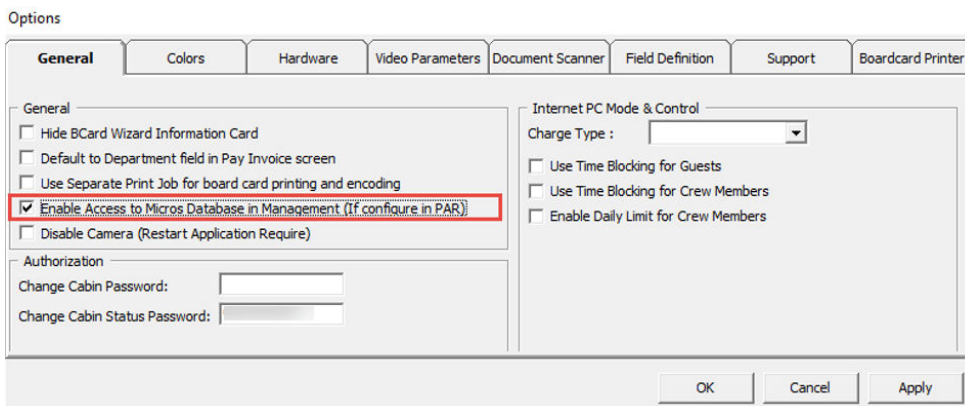
Setting Up MICROS Server Connection

You must establish a connection with the MICROS Server before you can retrieve any of the data. The MICROS Database id (SID) needs to be in the **tnsname.ora** before you set up the connection in SPMS.



1. Log in to the **Administration module, System Setup, Database Parameters Setup**.
2. In the Database Parameters Setup window, expand the **Promo** group.
3. Enter these values in their respective parameter field:
 - **MICROS Server Name:** Database Net Service name
 - **MICROS Server Type:** Set value to '0' for Oracle Server
 - **MICROS User Name:** Database username
 - **MICROS Password:** Database password

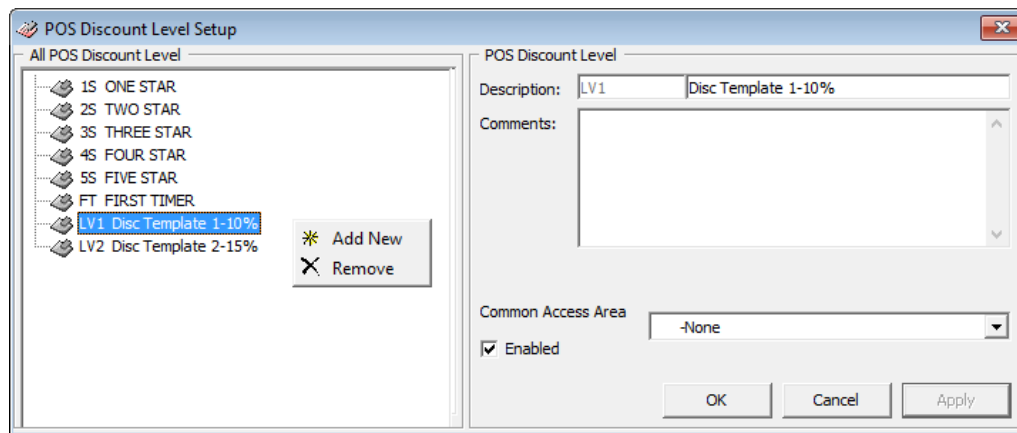
4. The system prompts an error message, “MICROS Server is offline, MICROS setup will be disabled” if you enter the parameter incorrectly.
5. Log in to the **Management** module and select the **Options, General** tab.
6. Select **Enable Access to MICROS Database in Management**.
7. Click **Apply** to save.



POS Discount Level Setup

The POS Discount Level Setup is the first set of configurations for the POS Discount. This is to define the discount group to be used in POS Discount Rate Setup.

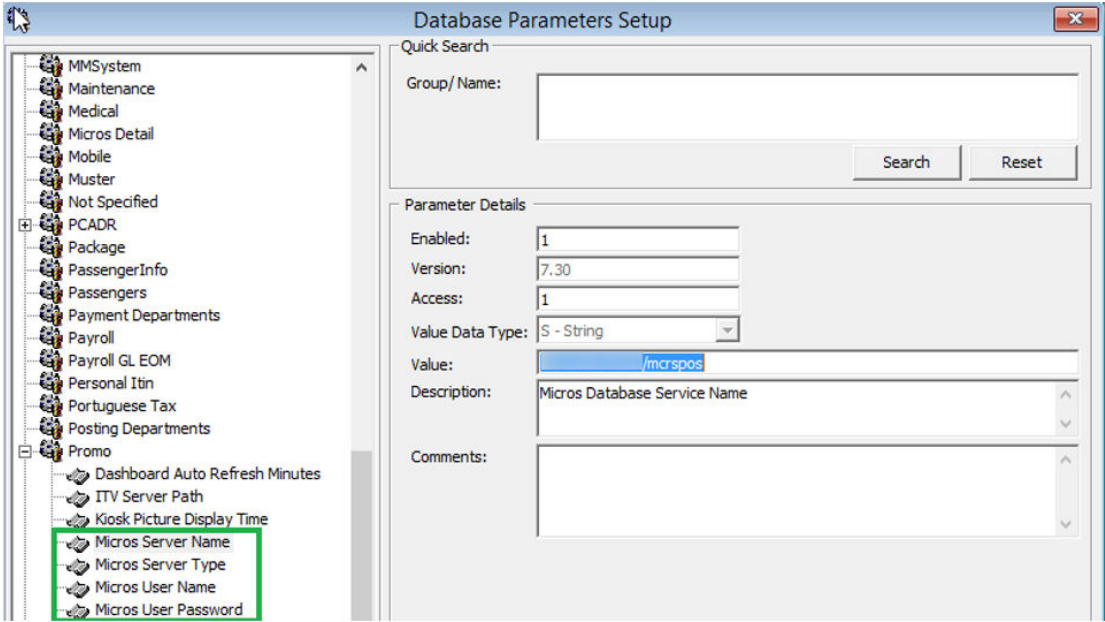
Figure 2-1 POS Discount Level Setup

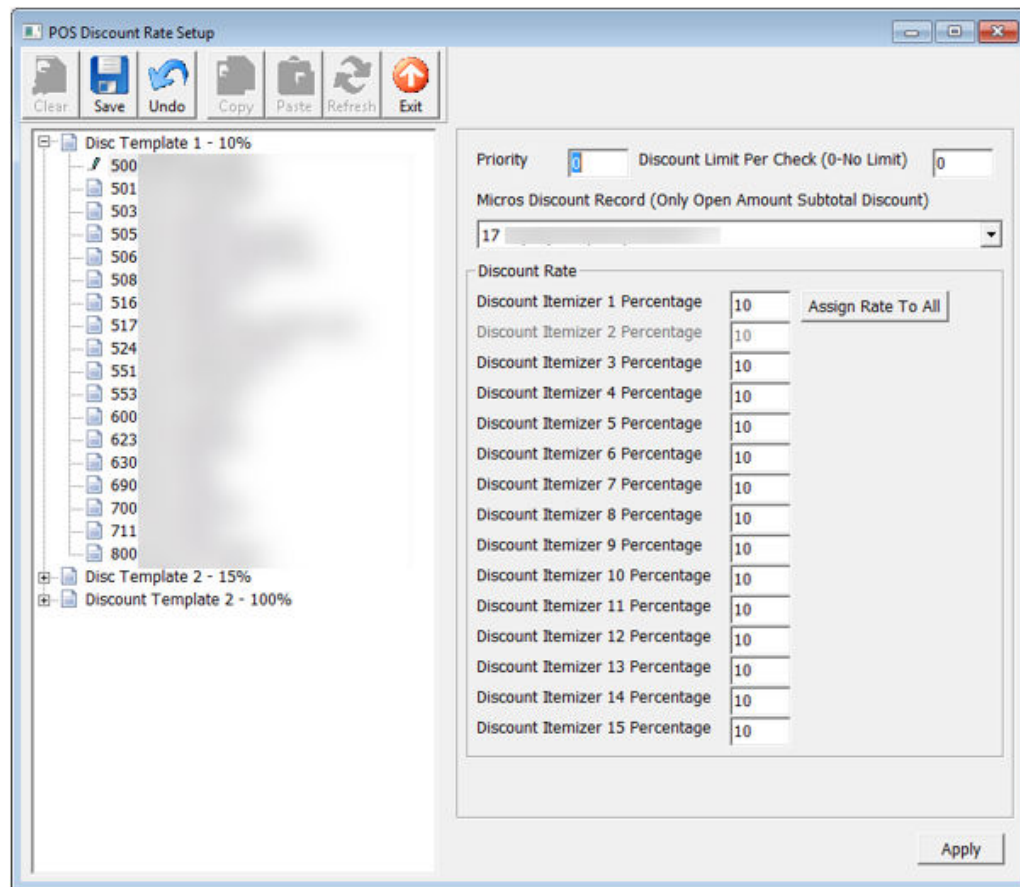


1. From the **Administration, POS Discount** menu, select **POS Discount Level Setup**.
2. Right-click and select **Add New** in the POS Discount Level Setup window.
3. Enter a **code**, a **description**, and any **comments** in the Description and Comments fields.
4. Click **Apply** to save and **OK** to exit.

- 5. Repeat the steps above to enter more discounts.

POS Discount Rate Setup





1. From the **Administration, POS Discount** menu, select **POS Discount Rate**.
2. In the POS Discount Rate Setup window, expand the tree view of the discount level to display the MICROS Revenue Center.
3. Select **MICROS Revenue Center** of the discount level.
4. Assign the discount priority number in the **Priority** field for each of the outlets. The lower priority number would be the higher chance for the discount to be applied to the guest with the same cabin and booking number. For more information, see Discount Level Assignment.
5. Enter the total discount limit per sales check in the **Discount Limit Per Check (0-No Limit)** field. For more information, see Discount Limit Per Check.
6. In the MICROS Discount Record (Only Open Amount Subtotal Discount) drop-down list, select the **MICROS discount record** representing the discount key.
7. In the **Discount itemizer 1 Percentage**, enter the discount rate.
8. To apply the same discount rate to the rest of the discount itemizers, click **Assign Rate To All**.
9. Click **Apply** to save.

Discount Level Assignment

In the following table, there are two POS Discount levels set up with a different priority number and discounts at each outlet. This will apply to the guest when:

- Guest X and Guest Y are staying in the same cabin and both have the same booking number.
- Guest X assigned to Four-Star POS Discount level and Guest Y assigned to Five-Star POS Discount level.

Table 2-1 POS Discount Level Assignment

POS Discount Level	Revenue Center (Outlet)	Priority Number	Discount (%) for all itemizers
Four-Star	A	1	40
	B	2	30
	C	0	20
Five-Star	A	0	50
	B	2	40
	C	1	30

The Discount Level applied are:

1. Guest X spends in outlet A and is entitled to a Five-Star discount rate of 50 percent (The Five-Star level has a lower priority number in outlet A).
2. Guest X spends at outlet B and is entitled to a Four-Star discount rate of 30 percent (both Four-Star and Five-Star levels have the same priority number for outlet B).
3. Guest X spends in outlet C and is entitled to a Four-star discount rate of 20 percent (Four-Star level has the lowest priority number for outlet C).
4. Guest Y spends at outlet A and can be entitled to a Five-Star discount rate of 50 percent
5. Guest Y spends at outlet B and can be entitled to a Five-Star discount rate of 40 percent (both Four-Star and Five-Star levels have the same priority number for outlet B).
6. Guest Y spends in outlet C and can be entitled to a Four-star discount rate of 20 percent (Four-Star level has the lowest priority number for outlet C).

Discount Limit per Check

The default value is set to zero (0 = no limit) per check. If you set a value per check at 50, the maximum discount is limited to \$50 per check. When the total discount value for a check exceeds the predefined limit, the full value applies.

For example, One-Star POS Discount Level has a discount rate of 10 percent and a discount limit up to \$100 per Guest check. A check posting at an outlet has a total of \$1200, the Guest is only entitled to a maximum of a \$100 POS Discount instead of \$120.

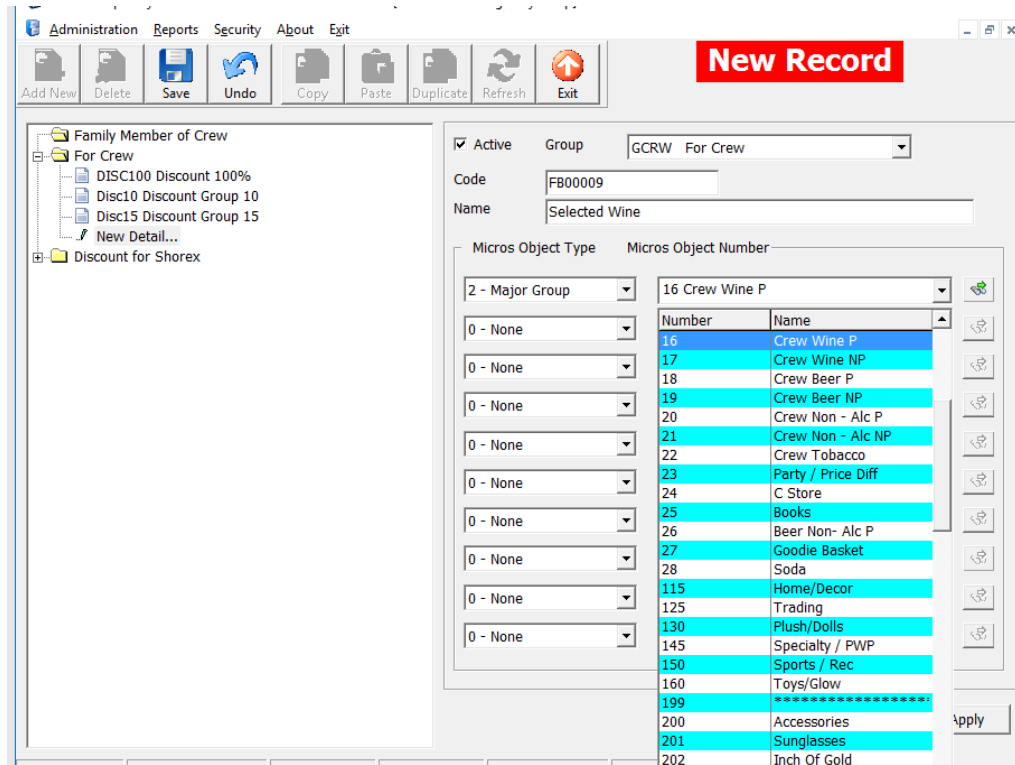
POS Discount Eligibility Group Setup

The POS Discount Eligibility Group is the first set of configurations for the Advance POS Discount. This is to define the group eligible for a specific POS discount.

To configure, repeat the steps in the POS Discount Level Setup.

POS Discount Eligibility Setup

Figure 2-2 POS Discount Eligibility Setup

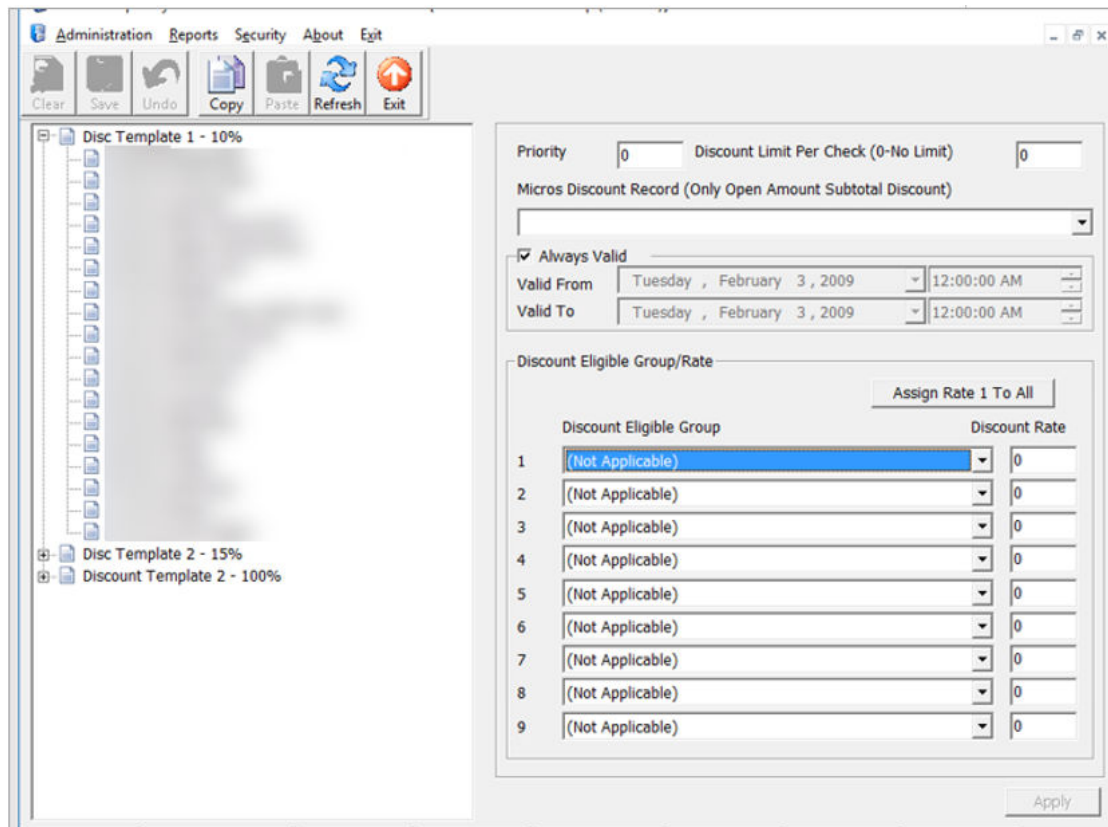


1. From the **Administration, POS Discount** menu, select **POS Discount Eligibility Setup**.
2. In the POS Discount Eligibility Setup window, click **Add New** on the ribbon bar.
3. In the Group field, select a group from the drop-down list.
4. Enter the code and the name.
5. Go to the **MICROS Object Type** section and select one of the following options; 0 = None, 1 = Menu, 2= Major Group, or 3 = Family Group
6. Select the respective item from the MICROS Object number drop-down list or click the **Binocular** icon to search.
7. To enter more menu items, repeat the steps above.
8. Click **Apply** to save.

POS Discount Rate (Advance)

The POS Discount Rate (Advance) is the final part of the Advance POS Discount. This is used to define the discount eligible group per POS discount level, using a specific discount rate, and supports up to nine discount groups per revenue center.

Figure 2-3 POS Discount Rate (Advance)



1. From the **Administration, POS Discount** menu, select **POS Discount Rate (Advance)**.
2. Repeat steps 2 to 5 of the [POS Discount Rate Setup](#).
3. The **Always Valid** is selected by default. Deselect the checkbox if you need to change the validity period.
4. In the **Discount Eligible Group** section, select the discount group/rate from the drop-down list.
5. In the **Discount Rate** column, enter the discount percentage.
6. Repeat steps 4 and 5 if the POS Discount Level has more than one discount eligibility group.
7. If the discount applies to all itemizers, click **Assign Rate To All**.
8. Click **Apply** to save.

POS through the Advanced MICROS Interface when you swipe the guest board card at the outlet.

Assigning Discount Level in Management/Crew Module

Figure 3-2 Disc Template Assignment in Edit Guest Info

1. Log in to the **Management** module and select **Cashier, Guest** from the drop-down list.
2. In the **Guest Info** tab, click **Edit Information** of the selected guest.
3. In the Edit Information window, **Name/Reservation** section, select the POS Discount level from the **Disc Template** drop-down list.
4. Click **OK** to save. The Assigned Disc. Template appears in the Guest Info tab, Passport Information section.
5. Go to Guest Handling, select the **guest record**, and click the Disc, Route, Pkg tab, it displays the eligible POS Discount/Discount department information in the MICROS Discount and MICROS Advance Discount tab.

Table 3-1 MICROS POS Tabs and Descriptions

Tab	Description
MICROS Discount	Displays the MICROS Discount Itemizer for the Basic POS Discount.
MICROS Advance Discount tab	Displays the Advance Discounts Items such as Menu Item/Family Group/Major Group Details.

4

Assigning Discount Level in Quick Check-In Module

The assignment of discounts in the Quick Check-in module varies, depending on the layout.

To set the **Disc Template** drop-down list as visible in ONE TAB, TWO TABS, or FOUR TABS format, make sure the field column **UXP_A_LOYALTY** is set to **Visible, Editable in AQCI Setup, Field Definition, Additional Details** tab.

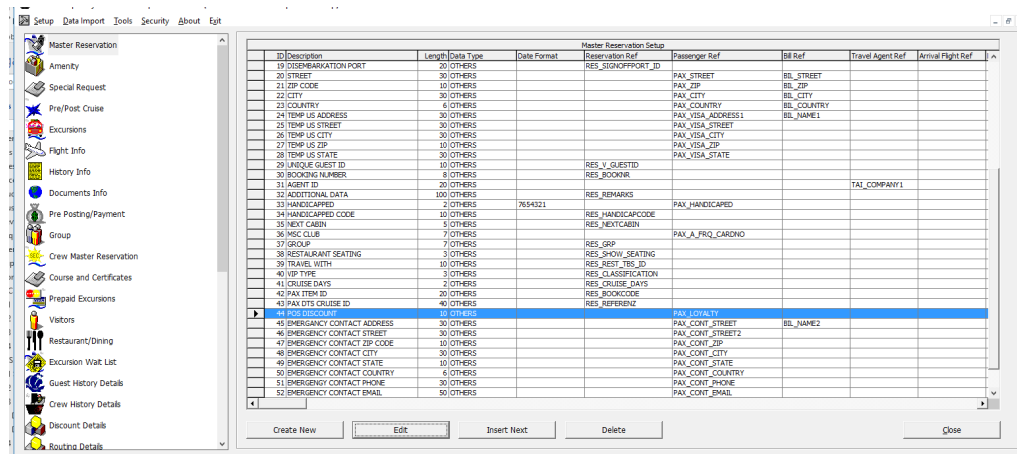
Figure 4-1 AQCI Discount Template Field

The screenshot shows the 'Additional Details' tab of the Quick Check-In module. The 'Other Details' section contains several fields and checkboxes. The 'Disc Template' field is highlighted with a red box, showing a dropdown menu with the selected value 'Disc Template 1-10%'. Other fields include 'Cruise Days', 'Award Level', 'Group No', 'Classification', 'PPD Type', 'Other Name', 'Royalty No', 'Special Need Coc', 'Special Need Not', 'Cruise Fare Code', 'Cruise Fare', 'Cruise Full Fare', and 'Cruise Fare Balan'. Checkboxes include 'Document Collected', 'Document Checked', 'Alaska Land Tour', 'Returning Customer', 'Returning Customer (Other)', and 'Exclude From Quick Billing Printing'.

Importing Reservation with POS Discount Level using Data Import

You can import the POS Discount status using the Data Import module.

Figure 4-2 Data Import



1. Open the **Data Import** application.
2. In the **Setup** menu, select **Reservation Related** from the drop-down list.
3. In the **Master Reservation** window, select a line and click **Insert Next** to add a new field.

Figure 4-3 Edit Data Import Fields

Field ID : 45

Field Description : POS DISCOUNT

Field Length : 10

Field Data Type : OTHERS

Data Format :

Handle Type :

RES PAX BIL TAI AIR DIT Travel ID

RES Table Reference :

PAX Table Reference : PAX_LOYALTY

BIL Table Reference :

TAI Table Reference :

DIT Table Reference :

AIR Table Reference :

Arrival Departure

Use for compare

Save Cancel

4. Enter the required information.
5. Select the **PAX** check box and select **PAX_LOYALTY** in the PAX Table Reference drop-down list.
6. Click **Save** and click **Close** to exit.

 **Note:**

The reservation manifest should contain the POS Discount code, for example, FIRST, ONE, TWO, THREE, FOUR, and FIVE for reservation with POS Discount status.