

# Oracle® Retail Demand Forecasting Cloud Service Starter Kit



Release 23.2.301.0

F84365-02

August 2023

The Oracle logo, consisting of a solid red square with the word "ORACLE" in white, uppercase, sans-serif font centered within it.

ORACLE®

Oracle Retail Demand Forecasting Cloud Service Starter Kit, Release 23.2.301.0

F84365-02

Copyright © 2023, Oracle and/or its affiliates.

Primary Author: Venkat Thiyagarajan

Contributing Authors: Kiran Kumar Shetty, Anoop Mohan, Mark Stadter, Melissa Artley

This software and related documentation are provided under a license agreement containing restrictions on use and disclosure and are protected by intellectual property laws. Except as expressly permitted in your license agreement or allowed by law, you may not use, copy, reproduce, translate, broadcast, modify, license, transmit, distribute, exhibit, perform, publish, or display any part, in any form, or by any means. Reverse engineering, disassembly, or decompilation of this software, unless required by law for interoperability, is prohibited.

The information contained herein is subject to change without notice and is not warranted to be error-free. If you find any errors, please report them to us in writing.

If this is software, software documentation, data (as defined in the Federal Acquisition Regulation), or related documentation that is delivered to the U.S. Government or anyone licensing it on behalf of the U.S. Government, then the following notice is applicable:

U.S. GOVERNMENT END USERS: Oracle programs (including any operating system, integrated software, any programs embedded, installed, or activated on delivered hardware, and modifications of such programs) and Oracle computer documentation or other Oracle data delivered to or accessed by U.S. Government end users are "commercial computer software," "commercial computer software documentation," or "limited rights data" pursuant to the applicable Federal Acquisition Regulation and agency-specific supplemental regulations. As such, the use, reproduction, duplication, release, display, disclosure, modification, preparation of derivative works, and/or adaptation of i) Oracle programs (including any operating system, integrated software, any programs embedded, installed, or activated on delivered hardware, and modifications of such programs), ii) Oracle computer documentation and/or iii) other Oracle data, is subject to the rights and limitations specified in the license contained in the applicable contract. The terms governing the U.S. Government's use of Oracle cloud services are defined by the applicable contract for such services. No other rights are granted to the U.S. Government.

This software or hardware is developed for general use in a variety of information management applications. It is not developed or intended for use in any inherently dangerous applications, including applications that may create a risk of personal injury. If you use this software or hardware in dangerous applications, then you shall be responsible to take all appropriate fail-safe, backup, redundancy, and other measures to ensure its safe use. Oracle Corporation and its affiliates disclaim any liability for any damages caused by use of this software or hardware in dangerous applications.

Oracle®, Java, and MySQL are registered trademarks of Oracle and/or its affiliates. Other names may be trademarks of their respective owners.

Intel and Intel Inside are trademarks or registered trademarks of Intel Corporation. All SPARC trademarks are used under license and are trademarks or registered trademarks of SPARC International, Inc. AMD, Epyc, and the AMD logo are trademarks or registered trademarks of Advanced Micro Devices. UNIX is a registered trademark of The Open Group.

This software or hardware and documentation may provide access to or information about content, products, and services from third parties. Oracle Corporation and its affiliates are not responsible for and expressly disclaim all warranties of any kind with respect to third-party content, products, and services unless otherwise set forth in an applicable agreement between you and Oracle. Oracle Corporation and its affiliates will not be responsible for any loss, costs, or damages incurred due to your access to or use of third-party content, products, or services, except as set forth in an applicable agreement between you and Oracle.

# Contents

## Send Us Your Comments

---

### Preface

---

Audience	vi
Documentation Accessibility	vi
Related Documents	vi
Customer Support	vi
Improved Process for Oracle Retail Documentation Corrections	vii
Oracle Retail Documentation on the Oracle Help Center ( <a href="https://docs.oracle.com">docs.oracle.com</a> )	vii
Conventions	vii

## 1 Introduction

---

About This Document	1-1
Hardware and Software Requirements	1-1
Cygwin Installation Requirement Notes	1-2
Starter Kit Components	1-2
Hardware and Software Requirement Notes	1-3
Terms	1-3

## 2 Installing on a Windows Environment

---

RDF Cloud Service Starter Kit Overview	2-1
Starter Kit Installation on Windows	2-1
Starting the Cygwin Shell and Setting up the Environment	2-1
Download and Install Java JDK	2-1
Setup JAVA_HOME	2-2
RPAS Package Location	2-2
Installing the Starter Kit	2-2
Creating the Required Environment Variables	2-3
Steps to Access the Environment Variables Window	2-3
Create the RPAS_HOME Environment Variable	2-5

Create the RIDE_HOME Environment Variable	2-6
Update or Create the JAVA_HOME Environment Variable	2-6
Update the PATH Variable	2-7
Update the RPAS_JAVA_CLASSPATH Variable	2-7
The RIDE_OPTIONS Variable	2-8
Launching RPAS Cloud Edition Configuration Tools	2-8
Application Building	2-9
Object Store Locations	2-9
Updating the Starter Kit Installation	2-10

### 3 RPASCE Virtual Machine

---

VirtualBox Software	3-1
System Requirements	3-2
VM Image	3-2
VM Setup	3-3
Using the VM	3-12
Launching the RPASCE User Interface	3-12
Copying Files between the VM and the Host Desktop	3-14
Users in the VM	3-16
Using SQL Developer	3-17
Troubleshooting	3-18

### A Appendix: Generating the Configuration for Plug-in Options

---

Creating the Configuration Using Plug-ins	A-1
---	-----

# Send Us Your Comments

Oracle Retail Demand Forecasting Cloud Service Starter Kit, Release 23.2.301.0.

Oracle welcomes customers' comments and suggestions on the quality and usefulness of this document.

Your feedback is important, and helps us to best meet your needs as a user of our products. For example:

- Are the implementation steps correct and complete?
- Did you understand the context of the procedures?
- Did you find any errors in the information?
- Does the structure of the information help you with your tasks?
- Do you need different information or graphics? If so, where, and in what format?
- Are the examples correct? Do you need more examples?

If you find any errors or have any other suggestions for improvement, then please tell us your name, the name of the company who has licensed our products, the title and part number of the documentation and the chapter, section, and page number (if available).



## Note:

Before sending us your comments, you might like to check that you have the latest version of the document and if any concerns are already addressed. To do this, access the Online Documentation available on the Oracle Help Center Web site. It contains the most current Documentation Library plus all documents revised or released recently.

Send your comments to us using the electronic mail address: [retail-doc\\_us@oracle.com](mailto:retail-doc_us@oracle.com).

Please give your name, address, electronic mail address, and telephone number (optional).

If you need assistance with Oracle software, then please contact your support representative or Oracle Support Services.

If you require training or instruction in using Oracle software, then please contact your Oracle local office and inquire about our Oracle University offerings. A list of Oracle offices is available on our Web site at <http://www.oracle.com>.

# Preface

Oracle Retail Installation Guides contain the requirements and procedures that are necessary for the retailer to install Oracle Retail products.

## Audience

This Starter Kit is written for the following audiences:

- Integrators and implementation staff

## Documentation Accessibility

For information about Oracle's commitment to accessibility, visit the Oracle Accessibility Program website at <http://www.oracle.com/pls/topic/lookup?ctx=acc&id=docacc>.

### Access to Oracle Support

Oracle customers that have purchased support have access to electronic support through My Oracle Support. For information, visit <http://www.oracle.com/pls/topic/lookup?ctx=acc&id=info> or visit <http://www.oracle.com/pls/topic/lookup?ctx=acc&id=trs> if you are hearing impaired.

## Related Documents

For more information, see the following documents in the Oracle Retail Demand Forecasting Cloud Service Release 23.2.301.0 documentation set:

- *Oracle Retail Demand Forecasting Cloud Service Administration Guide*
- *Oracle Retail Demand Forecasting Cloud Service Implementation Guide*
- *Oracle Retail Demand Forecasting Cloud Service User Guide*
- *Oracle Retail Demand Forecasting Cloud Service Starter Kit Guide*
- *Oracle Retail Demand Forecasting Cloud Service Release Notes*
- Oracle Retail Predictive Application Server Cloud Edition documentation set

## Customer Support

To contact Oracle Customer Support, access My Oracle Support at the following URL:

<https://support.oracle.com>

When contacting Customer Support, please provide the following:

- Product version and program/module name
- Functional and technical description of the problem (include business impact)
- Detailed step-by-step instructions to re-create
- Exact error message received
- Screenshots of each step you take

## Improved Process for Oracle Retail Documentation Corrections

To more quickly address critical corrections to Oracle Retail documentation content, Oracle Retail documentation may be republished whenever a critical correction is needed. For critical corrections, the republication of an Oracle Retail document may at times not be attached to a numbered software release; instead, the Oracle Retail document will simply be replaced on the Oracle Help Center Web site, or, in the case of Data Models, to the applicable My Oracle Support Documentation container where they reside.

This process will prevent delays in making critical corrections available to customers. For the customer, it means that before you begin installation, you must verify that you have the most recent version of the Oracle Retail documentation set. Oracle Retail documentation is available on the Oracle Help Center at the following URL:

<http://www.oracle.com/technetwork/documentation/oracle-retail-100266.html>

An updated version of the applicable Oracle Retail document is indicated by Oracle part number, as well as print date (month and year). An updated version uses the same part number, with a higher-numbered suffix. For example, part number F123456-02 is an updated version of a document with part number F123456-01.

If a more recent version of a document is available, that version supersedes all previous versions.

## Oracle Retail Documentation on the Oracle Help Center (docs.oracle.com)

Oracle Retail product documentation is available on the following web site:

<https://docs.oracle.com/en/industries/retail/index.html>

(Data Model documents are not available through Oracle Help Center. These documents are packaged with released code, or you can obtain them through My Oracle Support.)

## Conventions

The following text conventions are used in this document:

Convention	Meaning
<b>boldface</b>	Boldface type indicates graphical user interface elements associated with an action, or terms defined in text or the glossary.
<i>italic</i>	Italic type indicates book titles, emphasis, or placeholder variables for which you supply particular values.

<b>Convention</b>	<b>Meaning</b>
monospace	Monospace type indicates commands within a paragraph, URLs, code in examples, text that appears on the screen, or text that you enter.



# 1

## Introduction

Welcome to the *Oracle Retail Demand Forecasting Cloud Service Starter Kit*. This chapter outlines the contents of this guide, discusses the updated components with respect to the previous version, lists hardware and software requirements, and defines commonly used notations and terms.

Using this document allows users to:

- Install RPAS Windows Starter Kit
- Launch ConfigTools and application plug-ins for modifying an existing or developing a new application configuration.
- Validate the configurations using scripts in Cygwin
- Download and launch Virtual Machines

## About This Document

This document contains information for installation of the Starter Kit components.

Read this entire guide before beginning the installation process to ensure you understand the installation process and have all the necessary documentation, hardware, and software available.

## Hardware and Software Requirements

Table 1-1 describes the hardware and software requirements for the Starter Kit.



### Note:

Java can be acquired for Microsoft Windows at: [www.java.com](http://www.java.com).

**Table 1-1 Starter Kit Hardware and Software Requirements**

Requirement	Details
Supported Operating Systems for RPAS Configuration Tools	Microsoft Windows 10 <b>Note:</b> Oracle Retail assumes that the retailer has ensured its Operating System has been patched with all applicable Windows updates.
	RPAS Configuration Tools requires 64-bit Java 1.8 or later.
Required Software	<ul style="list-style-type: none"><li>• Java 8 JDK (required to support the RPAS Cloud Edition Configuration Tools.)</li><li>• Microsoft 2015 Runtime Libraries</li><li>• VirtualBox</li><li>• Cygwin</li></ul>

**Table 1-1 (Cont.) Starter Kit Hardware and Software Requirements**

Requirement	Details
Microsoft 2015 Runtime Libraries	<p>Ensure that these Microsoft 2015 Runtime Libraries are installed to enable RPAS</p> <p>RPAS Cloud Edition Configuration Tools and other RPAS utilities:</p> <ul style="list-style-type: none"> <li>vc_redist.x64.exe</li> <li>vc_redist.x86.exe</li> </ul> <p>Download these libraries from this link:  <a href="https://www.microsoft.com/en-us/download/details.aspx?id=48145">https://www.microsoft.com/en-us/download/details.aspx?id=48145</a></p> <p><b>Note:</b> Use Microsoft Visual C++ 2015 or higher for use with RPAS Cloud Edition Configuration Tools and other RPAS utilities.</p>
Cygwin	<p>64-bit installation of Cygwin</p> <p>Cygwin provides a Unix-like environment under Windows. You must install Cygwin to emulate UNIX commands (required for running some RPAS Cloud Edition Configuration Tools utilities on Windows).</p>

## Cygwin Installation Requirement Notes

The following notes pertain to the RPAS hardware and software requirements.

### Installation Requirements for Cygwin

For some RPAS Cloud Edition Configuration Tools utilities on Windows, you must install Cygwin to emulate UNIX commands. You can find more information about downloading this product at: <http://www.cygwin.com>.

1. Cygwin should be installed under this directory:

C:\cygwin

#### Note:

Only use this folder and do not install under C:\Program files or any other folders with spaces to avoid file path conversion issues.

2. Select **Use System Proxy Settings** for install to display a list of mirror sites.

#### WARNING:

In addition to the default packages that are installed, make sure to select the `mksh`, `unzip`, and `zip` packages to be installed.

## Starter Kit Components

For information on installing the Starter Kit, refer to [Installing on a Windows Environment](#).

For information on installing the VM related software refer to [RPASCE Virtual Machine](#)

## Hardware and Software Requirement Notes

The following notes pertain to the RPAS hardware and software requirements:

- An application for unzipping (.zip) components must be installed and used for extracting the RPAS Configuration Tools.
- You must install Cygwin to emulate UNIX commands (required for running some RPAS Configuration Tools utilities on Windows). You can find more information about downloading this product at: <http://www.cygwin.com>.

[Table 1-2](#) indicates which software components are needed for each task.

**Table 1-2 Software Requirements Notes**

Item	Details
Task	Use the Configuration Tools to create or modify solutions.
Typical User	Solution/ Product Administrator
Platforms	Windows 10
RPAS Server	Yes
RPAS Clients	No
Configuration Tools	Yes
Java	Yes

## Terms

The following table lists terms that are used in this guide:

Term	Definition
RPASCE	The Oracle Retail Predictive Application Server Cloud Edition provides the foundation for Oracle Retail solutions such as Oracle Retail Demand Forecasting (RDFCS), Merchandise Financial Planning (MFPCS), and Assortment Planning (APCS). RPASCE does not include any business logic, but it enables the solutions to store, manipulate and retrieve data. It provides the solutions with a standard interface based on wizards, templates, workbooks, and batch processes.
PDS	Planning Data Store. Database containing the data and metadata for RPAS applications.
RPAS Configuration Tools	The tools used to configure an RPAS solution. For more information, refer to the <i>Oracle Retail Predictive Application Server Configuration Tools User Guide</i>

# 2

## Installing on a Windows Environment

This chapter describes how to install the RDF Cloud Service Starter Kit on a Windows environment.

### RDF Cloud Service Starter Kit Overview

RPAS Cloud Service is comprised of many components. In addition, there are solutions that have been developed using the RPAS Cloud Service foundation. Examples of these solutions include Oracle Retail Merchandise Financial Planning (MFPCS) and Oracle Retail Demand Forecasting (RDFCS). Each application supported by the RPAS Cloud Service Platform has a dedicated Starter Kit.

The components of the Starter Kit software include the following:

- RPAS Configuration Tools
- RPAS Server libraries used by the Configuration Tools
- Documentation



#### Note:

The Starter Kit distribution does not contain a full Retail Home instance. As a result, Retail Home and its features are not supported in Starter Kit environments.

### Starter Kit Installation on Windows

For the purposes of this section, a slash "/" is used to delineate directories and files in paths. Users in a Windows Command Prompt environment need to either use a backslash "\" as the delineation character or use double quotes around paths.

This section contains the following topics:

- [Starting the Cygwin Shell and Setting up the Environment](#)
- [RPAS Package Location](#)
- [Installing the Starter Kit](#)

### Starting the Cygwin Shell and Setting up the Environment

Perform the following procedures to start the Cygwin shell and set up the environment.

#### Download and Install Java JDK

This version of ConfigTools support 64 bit Java JDK version. Java needs to be installed under the directory which does not have spaces in it.

C:\Java

## Setup JAVA\_HOME

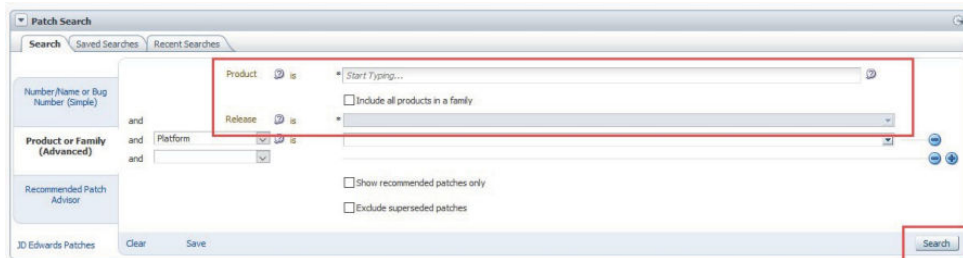
After installing JDK inside Cygwin, setup the JAVA\_HOME as described in [Creating the Required Environment Variables](#).

## RPAS Package Location

The RPAS package can be found on My Oracle Support.

1. Access My Oracle Support using this URL: <https://support.oracle.com>
2. From the My Oracle Support dashboard, click on the **Patches & Updates** tab.
3. From the **Patches & Updates** tab, select the **Product or Family (Advanced Search)** that is located in the **Patch Search** panel.
4. In the **Product** search box, enter *Oracle Retail Demand Forecasting Cloud Service*.
5. Click the arrow on the Release list to view all of the available releases for your product. Select the release that you wish to access and then click **Search**.

**Figure 2-1 Patch Search**



6. From the Patch Advanced Search Results, click the patch link located in the Patch Name column.
7. Verify that this is your desired patch and then click **Download**.

### Note:

Some customers may not be able to download the Starter Kit package, due to a limitation in My Oracle Support portal's structure. If you run into a problem trying to download, then log an SR through which Oracle will provide you a link to access the Starter Kit package.

## Installing the Starter Kit

The following procedures provide information about creating the necessary folders on your Windows PC and copying the Configuration Tools components to them.

1. Using Windows Explorer, navigate to your C drive, create a folder named **Oracle**.

2. Open the **Oracle** folder.
3. Unzip the downloaded file with a name similar to `p33174696_19000_MSWIN-x86-64.zip` into the newly created Oracle directory on the Windows machine. Once extracted, the following directories appear:

Directory	Description
ConfigTools	This directory contains the components required to run the RPAS Configuration Tools.

In this example, the path `C:\Oracle\PDF_Starter_Kit\ConfigTools` is both the **RPAS\_HOME** and **RIDE\_HOME**. Environment variables are defined on your Windows PC to point to this location so that RPAS will function correctly. Refer to "[Creating the Required Environment Variables](#)" for information on creating the necessary RPAS variables.

## Creating the Required Environment Variables

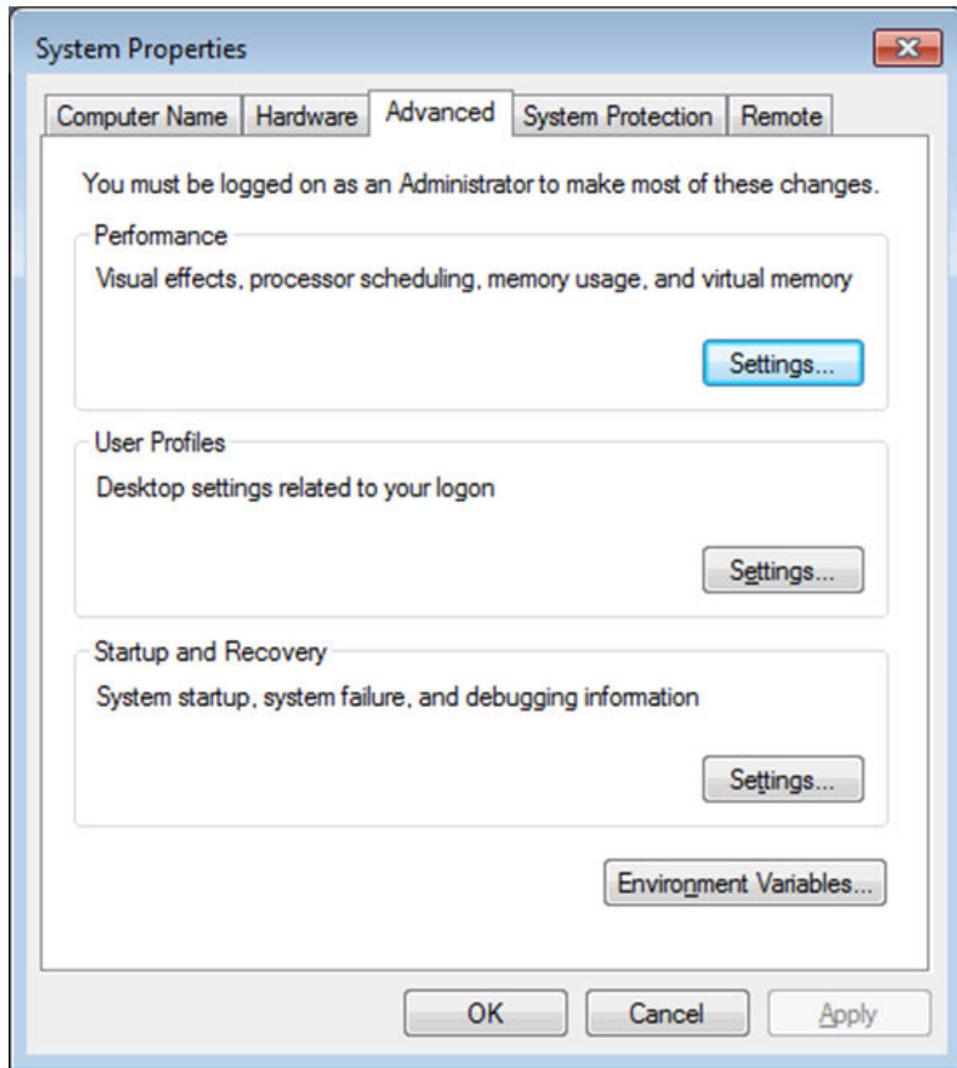
The following steps outline the process to follow and environment variables required to support the RPAS installation and application install.

### Steps to Access the Environment Variables Window

Perform the following steps to access the Environment Variables window.

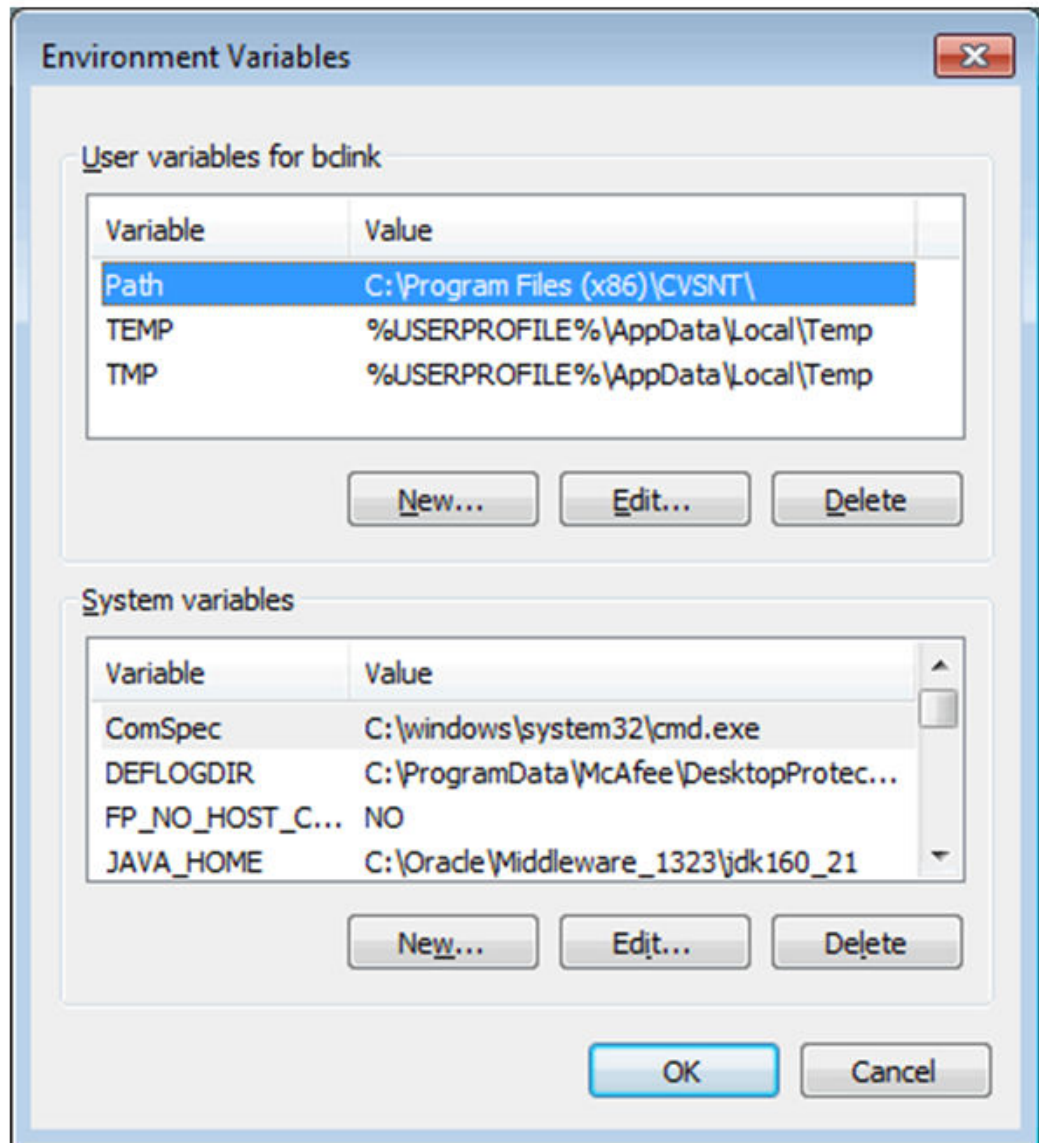
1. Press Windows key and **R**, the Run box opens.
2. Type `sysdm.cpl` and press **Enter**.
3. Select the **Advanced** tab.
4. At the bottom of the window, click **Environment Variables**.

Figure 2-2 System Properties - Advanced Tab



5. The Figure 2-3 window opens.

Figure 2-3 Environment Variables Window

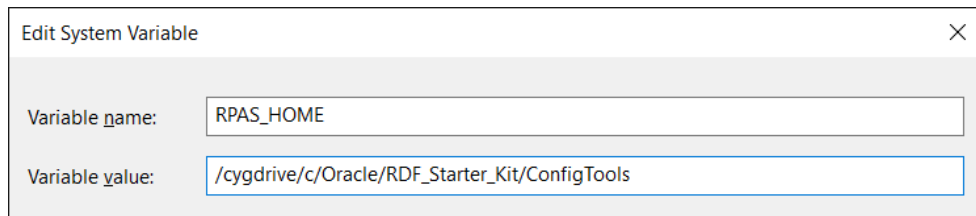


## Create the RPAS\_HOME Environment Variable

1. Under the System variables box, click **New**. The New System Variable dialog box opens.
2. Enter **RPAS\_HOME** in the **Variable** name field.
3. Enter the path of the **RPAS Server** folder in the **Variable value** field. In our [Figure 2-4](#) example, this is: `/cygdrive/c/Oracle/RDF_Starter_Kit/ConfigTools`



**Figure 2-4 Example of RPAS\_HOME Variable**

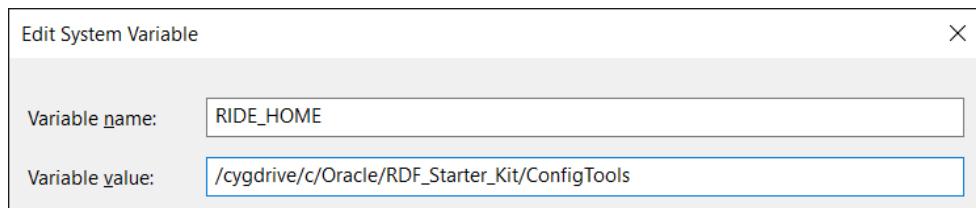


4. Click **OK**. **RPAS\_HOME** now appears in the Variable name box.

## Create the RIDE\_HOME Environment Variable

1. Under the System variables box, click **New**. The New System Variable dialog box opens.
2. Enter **RIDE\_HOME** in the **Variable name** field.
3. Enter the path of the **ConfigTools** folder in the **Variable value** field. In our [Figure 2-5](#) example, this is: `/cygdrive/c/Oracle/RDF_Starter_Kit/ConfigTools`
4. Click **OK**.

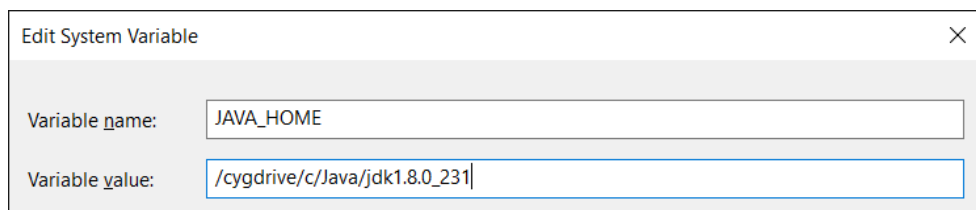
**Figure 2-5 Example of RIDE\_HOME Variable**



## Update or Create the JAVA\_HOME Environment Variable

1. Under the System variables box, select the **JAVA\_HOME** environment variable and update it
2. Enter the path of the java folder in the Variable value field. In [Figure 2-6](#), this is: `/cygdrive/c/Java/jdk1.8.0_231`

**Figure 2-6 JAVA\_HOME Variable**



3. Create the **ORACLE\_HOME** environment variable.
  - a. Ensure that the Oracle Database 19c Client is installed locally on your Windows machine. If not installed, you can download a copy from: <https://>

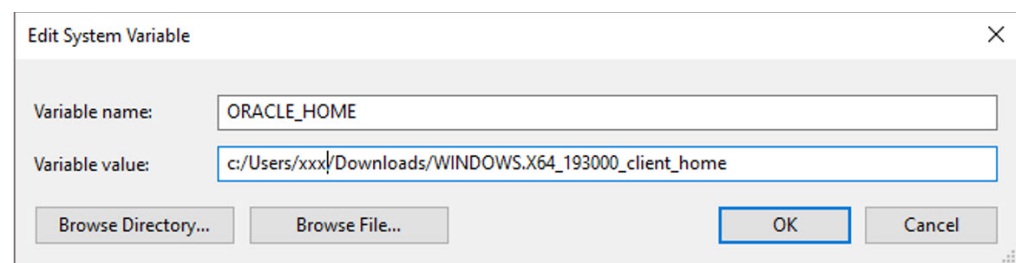
[www.oracle.com/database/technologies/oracle19c-windows-downloads.html](http://www.oracle.com/database/technologies/oracle19c-windows-downloads.html)

For example, download the `WINDOWS.X64_193000_client_home.zip` file and then unzip it into your Download directory.

- b. Beneath the System variables box, click **New**. The New System Variable dialog box opens.
- c. In the Variable name field, enter `ORACLE_HOME`
- d. In the Variable value field, enter the path of the Oracle database 19c client folder. In [Figure 2-7](#), this is:

`c:/Users/xxx/Downloads/WINDOWS.X64_193000_client_home`

**Figure 2-7 Example of ORACLE\_HOME Variable**



## Update the PATH Variable

1. Under the System variables section, select the PATH environment variable and click **Edit**.
2. Insert the complete paths for `RPAS_HOME`, `RIDE_HOME`, and `JAVA_HOME` as shown:

```
%RPAS_HOME%\bin;%RPAS_HOME%\applib;%RPAS_HOME%\lib;
%JAVA_HOME%\bin;%JAVA_HOME%\lib;
%JAVA_HOME%\jre\bin\server;
%ORACLE_HOME%\bin;%ORACLE_HOME%\lib;
```

### Note:

Remember to separate all path statements with semicolons (;).

3. Select **OK** to save your changes.

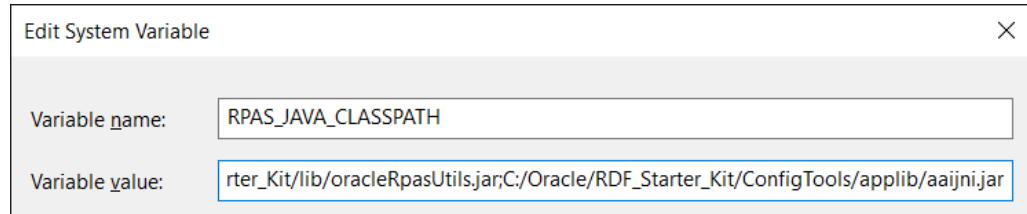
## Update the RPAS\_JAVA\_CLASSPATH Variable

The `RPAS_JAVA_CLASSPATH` is used to enable the RDFCS solution to execute extensions to RPAS written within the AAI framework. In order for the Configuration Tools to support these extensions, it is necessary to set the `RPAS_JAVA_CLASSPATH` environment variable so that the Configuration Tools can locate the libraries.

The value of the `RPAS_JAVA_CLASSPATH` variable should be the locations of the `aajni.jar` located in the `applib` subdirectory of the Starter Kit installation and the `oracleRpasUtils.jar` located in the `lib` subdirectory of the Starter Kit installation. Assuming the default location for Starter Kit installation, `RPAS_JAVA_CLASSPATH` should be set to:

```
C:/Oracle/ConfigTools/RDF_Cloud_Starter_Kit/lib/oracleRpasUtils.jar;C:/Oracle/ConfigTools/RDF_Starter_Kit/applib/aaajni.jar
```

Figure 2-8 Example of RPAS\_JAVA\_CLASSPATH Variable



## The RIDE\_OPTIONS Variable

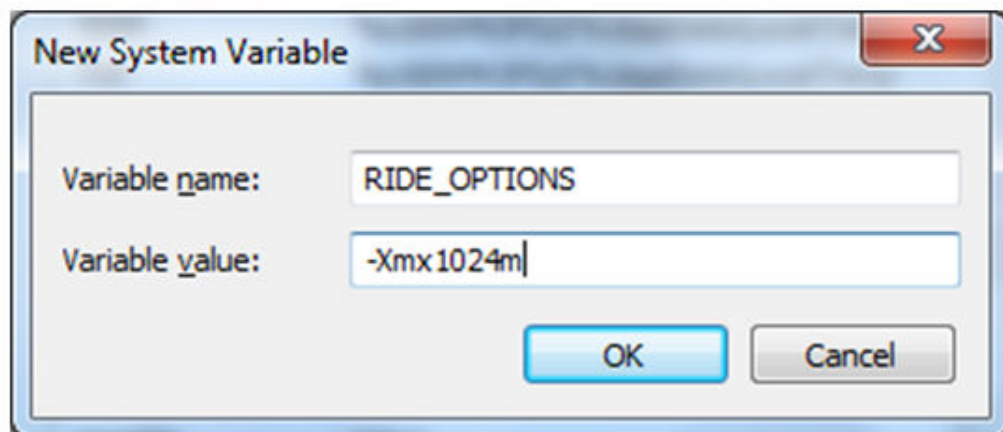
The RIDE\_OPTIONS environmental variable can be used to pass information into the ConfigTools.

By default, the Java Virtual Machine requests on the order of 268 MB of RAM from the OS to allocate for its heap. This is even more of an issue when multiple configurations are open in the Configuration Tools and must be held in memory simultaneously.

By using the `-Xmx` option, you can instruct the Java Virtual Machine to request more memory from the OS to prevent situations when all allocated memory is exhausted. The syntax of the property is:

`-Xmx###m`, where `###` is the amount, in megabytes, of memory the JVM is to request. Common values for this argument are `-Xmx512m` or `-Xmx1024m`.

Figure 2-9 Example of RIDE\_OPTIONS Variable



## Launching RPAS Cloud Edition Configuration Tools

Perform the following steps to launch RPAS Cloud Edition Configuration Tools.

1. Start Cygwin terminal and run the following commands:

```
>cd $RIDE_HOME/bin  
then  
>ConfigTools
```

## Application Building

This section describes building applications on Oracle cloud using the configuration from the Starter Kit.

## Object Store Locations

For the purposes of building the application, following subpaths in the object store are used:

### Note:

If you are using the VM it still uses the incoming FTP location; which is a folder shared with the host machine instead of the object store.

### config

For uploading the application configuration into the cloud environment, create an archive containing the config directory and all of its contents. This archive file must be named as `<config_name>_config.zip`. This archive file must be uploaded to the in Object Store under `planning/incoming/config` location.

The customer can use the plug-ins to generate different available configuration plug-in options. Refer to [Appendix: Generating the Configuration for Plug-in Options](#)

### json

Dashboards uses `dashboardSettings.json` and this file is used by the RPASCE client for displaying the dashboard. This file is optional. If present it should be uploaded to the Object Store under `planning/incoming/json` location.

### batch\_control

The set of batch process control files is optional. If present they must be uploaded to the Object Store under `planning/incoming/batch_control` location.

### integration

The batch process also needs `interface.cfg` file which is a configuration file to get data from RAP Integration. Refer to the *Oracle Retail Predictive Application Server Cloud Edition Implementation Guide* for more details about configuring the `interface.cfg` file. This file is needed only if some interfaces are configured to get the data. This file if present should be uploaded to the Object Store under `planning/incoming/config` location.

## input

The hierarchy data files and measure input files must be uploaded to the object store under `planning/incoming/input` as individual files or as an archive in the `.zip` format. If uploading data files as an archive, the name of the archive file should be same as the one used in batch control files for the compressed files. Remember not to include any directory structure in the archive file. In addition to the application build and patch processes, batch framework tasks like `measload`, `hierload`, `unpack`, and `waittrigger` will check for incoming files in this same object store input location.

## Updating the Starter Kit Installation

Each release of Cloud Service will have a version-specific Starter Kit. As the product is enhanced in future versions, it will be necessary to update the Starter Kit to incorporate these enhancements. The following steps outline the process of updating the Starter Kit installation:

1. Download the new version of the RDF Cloud Service Starter Kit.
2. Delete the contents of the `C:/Oracle/RDF_Starter_Kit` directory.

### WARNING:

It is highly recommended to save custom configurations outside of the `RDF_Starter_Kit` directory so that they are not accidentally deleted when updating the Starter Kit.

3. Follow the installation instructions for the new version of the Starter Kit.
4. Run plug-in automation on the existing configuration to create a version of the configuration for the selection configuration options. Follow the instructions in the *Oracle Retail Demand Forecasting Cloud Service Implementation Guide*.
5. Apply the changes in the newly generated configuration to the RDF Cloud Service application.

### Note:

For more information on using the RPAS Configuration Manager, refer to the *Oracle Retail Predictive Application Server Configuration Tools User Guide*.

# 3

## RPASCE Virtual Machine

RPAS Cloud Edition (CE) Virtual Machines (VMs) provide a way for anyone to be up and running using the RPASCE software as quickly as possible without having to deal with all the steps around setting up the RPASCE server, UI and its applications. The VMs are created for Oracle consultants and partners who want to get a quick feel of the application without having to set up the hardware and software resources necessary for trying out RPASCE solutions.

RPASCE VMs are not a replacement or substitution for pre-production Cloud Environments (STAGE, Dev, and so on). Note that the VMs are only provided to give a quick feel of the application and are not intended to be used as full-blown implementation tool.

This chapter lists the steps necessary to deploy an RPAS Cloud Edition VM, launch the UI and connect to the application included in the VM. All the components - RPASCE server, UI, PDS (Planning Data Store) are all local to the VM. Disregard the version numbers shown in the images in this chapter as the steps are the same across different versions.

Contrary to previous versions of the RPASCE VMs where the RPASCE server and UI software were directly installed in the VM they are now deployed using Docker inside the VirtualBox VM. Therefore, the RPASCE server, UI and database processes are running inside their silos known as containers inside the VM. For more information on Docker, refer to the URL:

<https://docs.docker.com/>

### Note:

The VMs do not include Retail Home, Science, or RI components. It only contains the base planning application. Also, the VMs do not use IDCS or Object Storage. Notifications are currently not supported in the VM.

## VirtualBox Software

Download the Oracle VirtualBox software that is available for Windows, Mac, Linux and Solaris from the following link. For Windows, select the download link for Windows Hosts:

<https://www.virtualbox.org/wiki/Downloads>

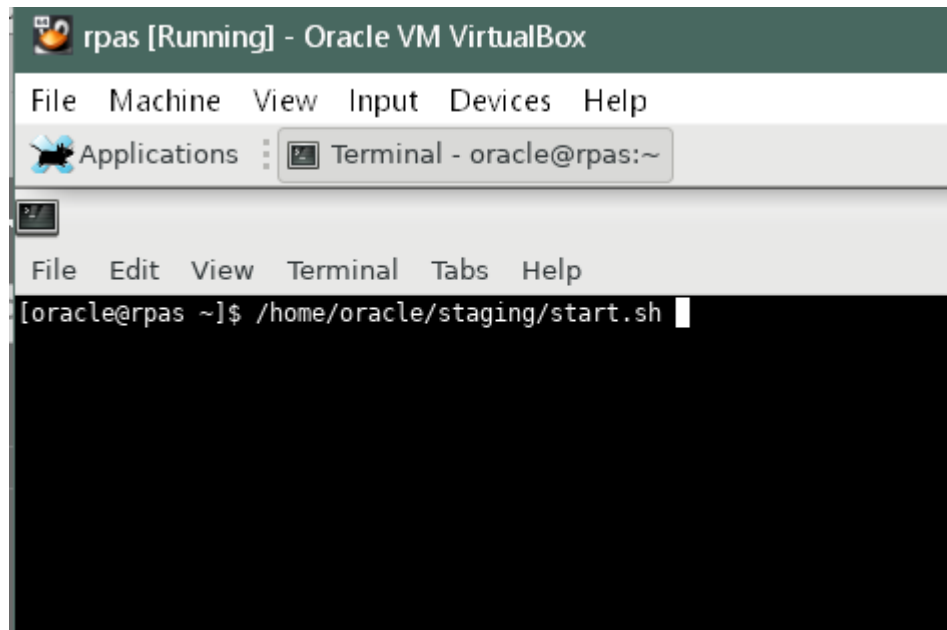
### Note:

For a straight forward installation, use the VirtualBox version 6.1 from the older downloads section. Version 7 and later versions require Python and certain Python bindings, refer to VirtualBox software documentation for more information.

 **Note:**

The previously mentioned Operating System is the OS of the host machine where the VirtualBox software will be installed and not the OS of the VM image itself. For most installers this will be a Windows system as shown in [Figure 3-1](#).

**Figure 3-1 VirtualBox Platform Packages**



## System Requirements

The Oracle VirtualBox software has the following system requirements:

- 16 GB RAM
- Quad-core CPU
- 50 GB free disk space

## VM Image

Download the VM the same way as you download the Starter Kit using the **Patches & Updates** tab from the My Oracle Support dashboard. Refer to "[RPAS Package Location](#)" for instructions on My Oracle Support downloads.

Figure 3-2 VM Download

**Patch Search**

**Patch Advanced Search Results**

Filters: Product is Oracle Retail Demand Forecasting Cloud Service; Release is Oracle Retail Demand Forecasting Cloud Service 19.0.0.0.0;

Table View

Patch Name	Description	Release	Platform (Language)	Product	Size
34091432	Oracle Retail Demand Forecasting Cloud Service Starter Kit 19.0.010.01 (Patchset)	19.0.0.0.0	Microsoft Windows x64 (64-bit) (American English)	Oracle Retail Demand Forecasting Cloud Service ( <a href="#">More...</a> )	43.4 MB
34091453	Oracle Retail Demand Forecasting Cloud Service Virtual Machine 19.0.010.01 (Patchset)	19.0.0.0.0	Microsoft Windows x64 (64-bit) (American English)	Oracle Retail Demand Forecasting Cloud Service ( <a href="#">More...</a> )	9.8 GB

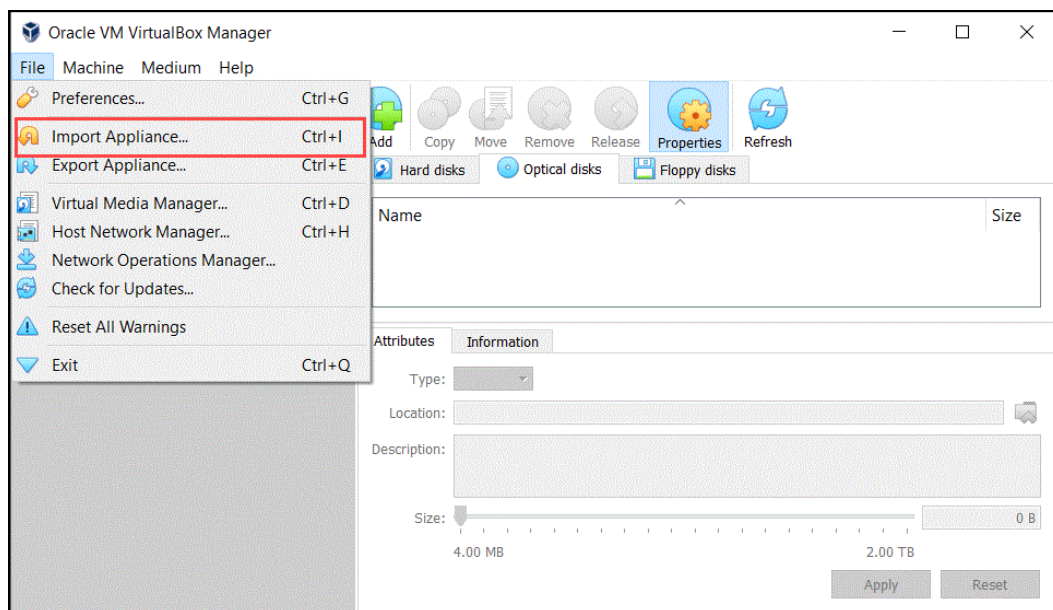
After downloading the VM, unzip the archive to obtain the file with the `.ovf` extension.

## VM Setup

Perform the following steps to import the downloaded RPASCE VM image file using VirtualBox software and then start it.

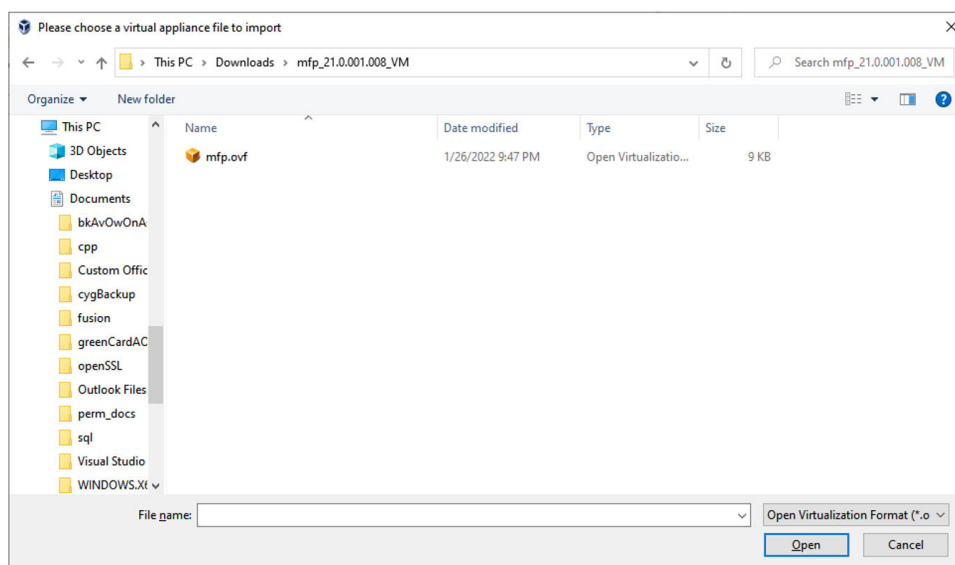
1. Start the VirtualBox software
2. From the main menu, click **File** and then select **Import Appliance...** as shown in [Figure 3-3](#)

Figure 3-3 Main Menu: Import Appliance...



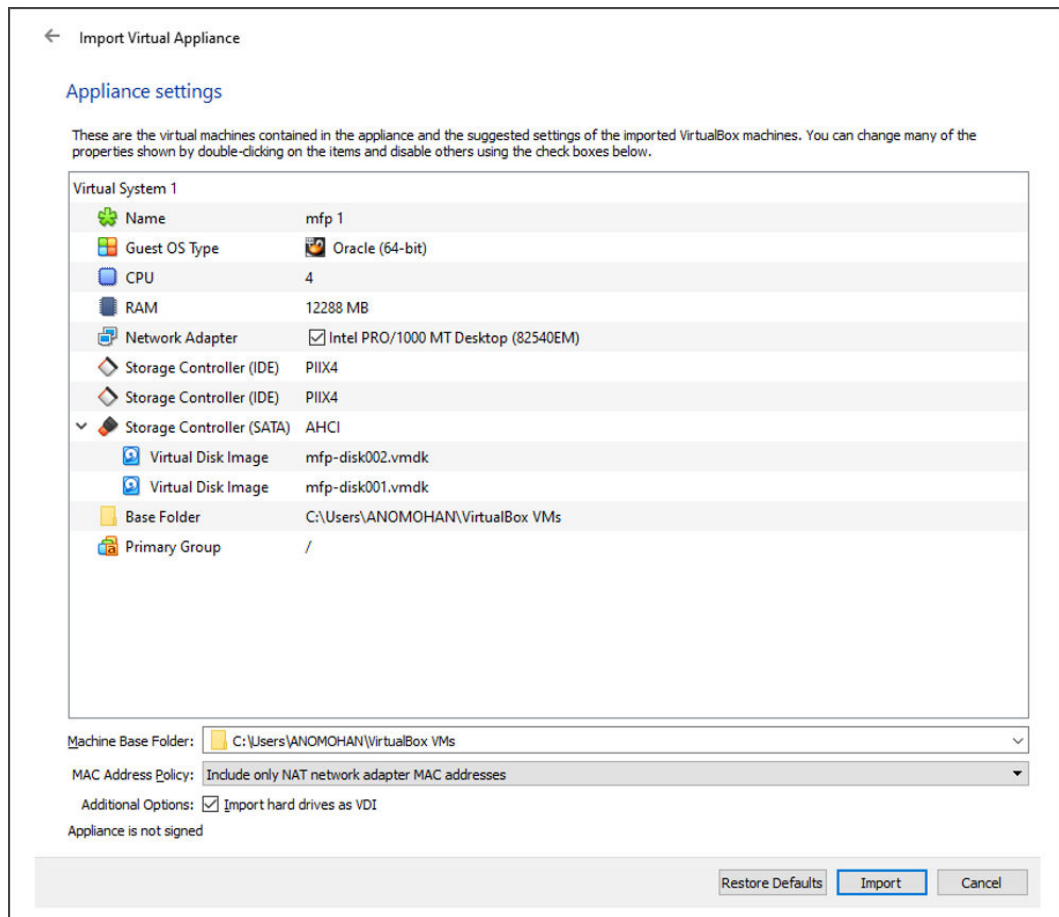
3. Browse to the downloaded VM base image (`.ovf` file). Select the VM file with the `.ovf` extension and click **Open**.



**Figure 3-4** Downloaded VM Base Image

4. On the screen shown in [Figure 3-5](#), change the name of the VM or increase the RAM used for a smoother VM experience, but choose the RAM setting carefully. The memory given to VM will not be available to your host OS while the VM is running, and this can significantly impact the performance of your host OS if it is already running low on memory due to other applications.

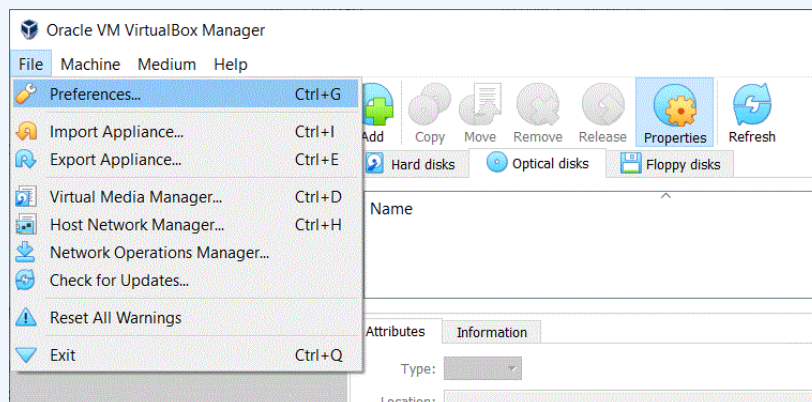
Click **Import**.

**Figure 3-5** Change the Name and RAM of the VM file

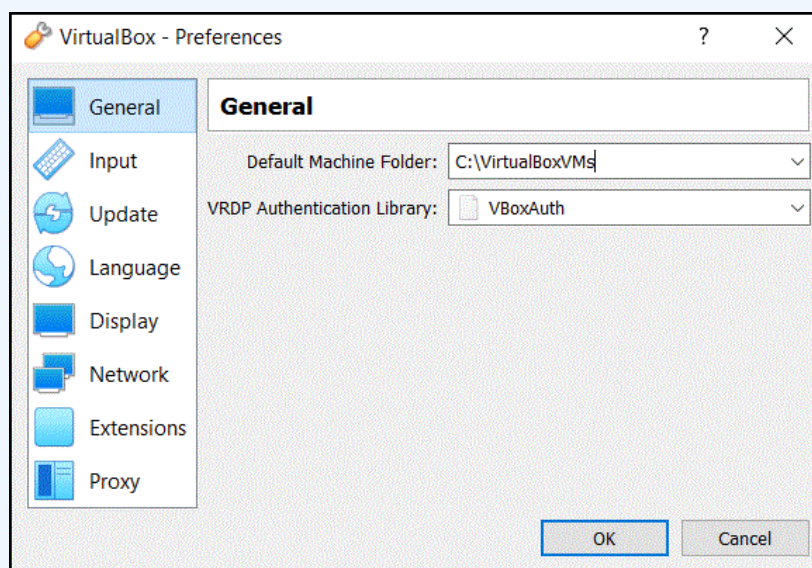
 **Note:**

This step creates a large file of around 40 GB on your local disk. The default location of these files is the location where VirtualBox is installed (usually the C drive for Windows). If the default location does not contain at least 50 GB of free space, then change the default location as described here:

- Click **File** and then select **Preferences...**



- Change the location of the Default Machine Folder to a drive that has enough space.

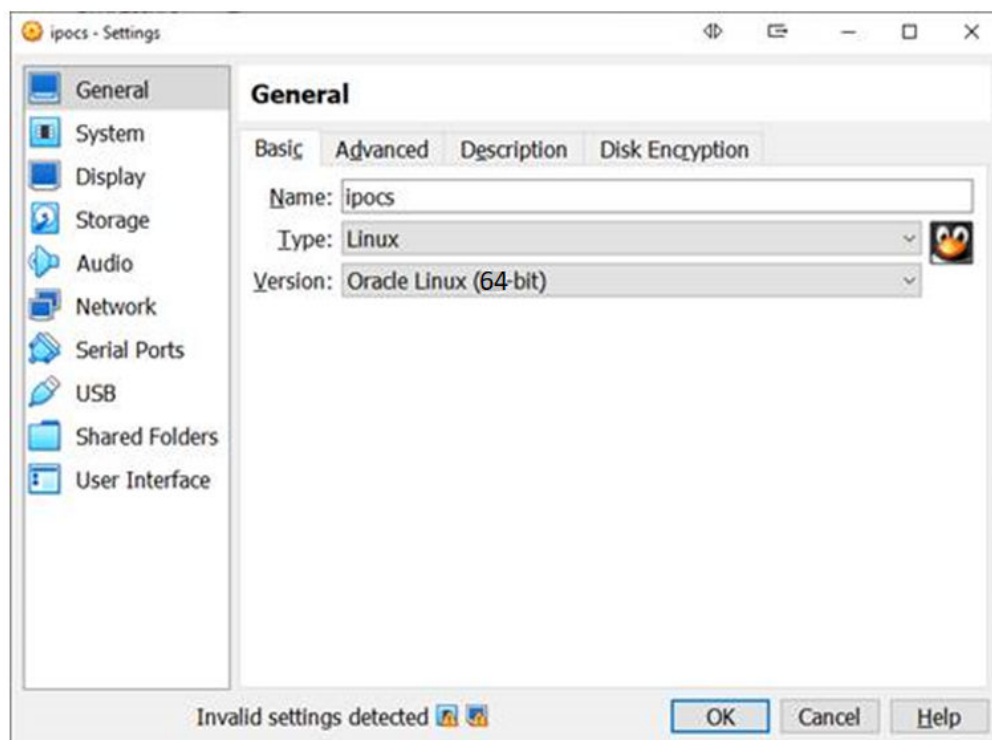


Wait for the image to get imported. It might take a few minutes.

5. Prior to deployment, verify that the Basic settings are correct to avoid receiving an error message that indicates that the inappropriate kernel is being used for your CPU.
  - a. Click the **Settings** icon to verify the settings for the selected VM.

**Figure 3-6 Settings Icon**

- b. From the left panel, click **General** and then select the **Basic** tab.

**Figure 3-7 Basic Tab**

- c. Verify that the System Type and Version are appropriate and match your CPU.

**Example:**

Type: Linux

Version: Oracle Linux (64-bit)

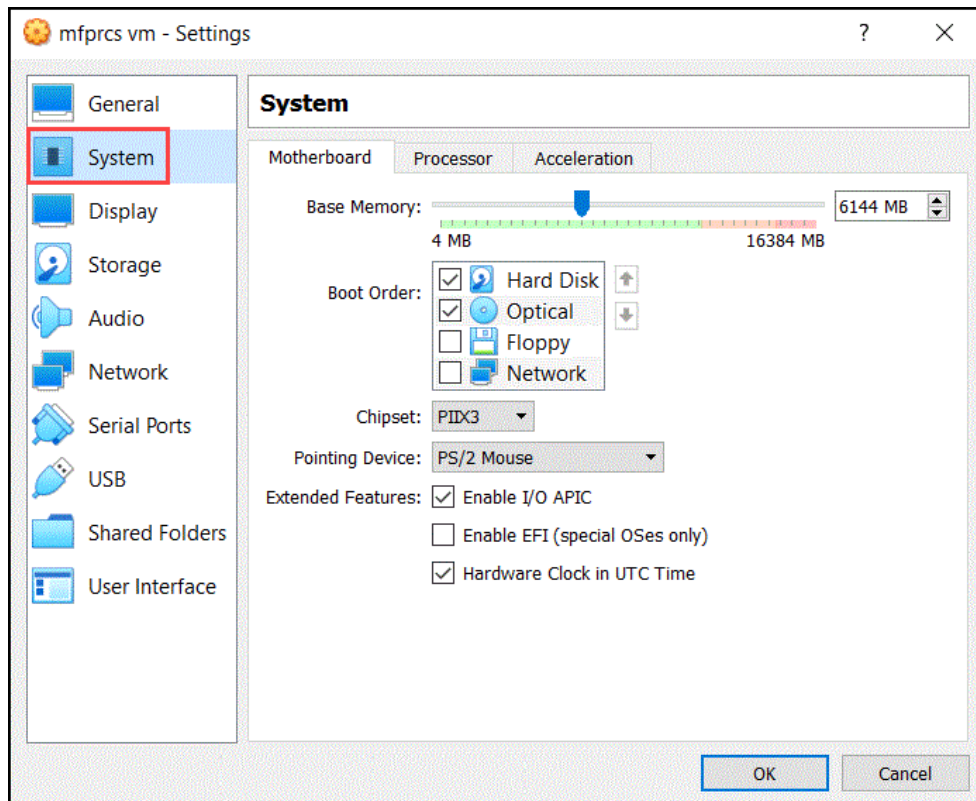
6. If your machine has more than 16 GB of memory, increase the memory used by the VM. Note that the post-build batch for the initial application build will not work without at least 12 GB of memory allocated.

Click the **Settings** icon to change the settings for the selected VM.

From the left panel, click **System** and then move the slider to desired memory.

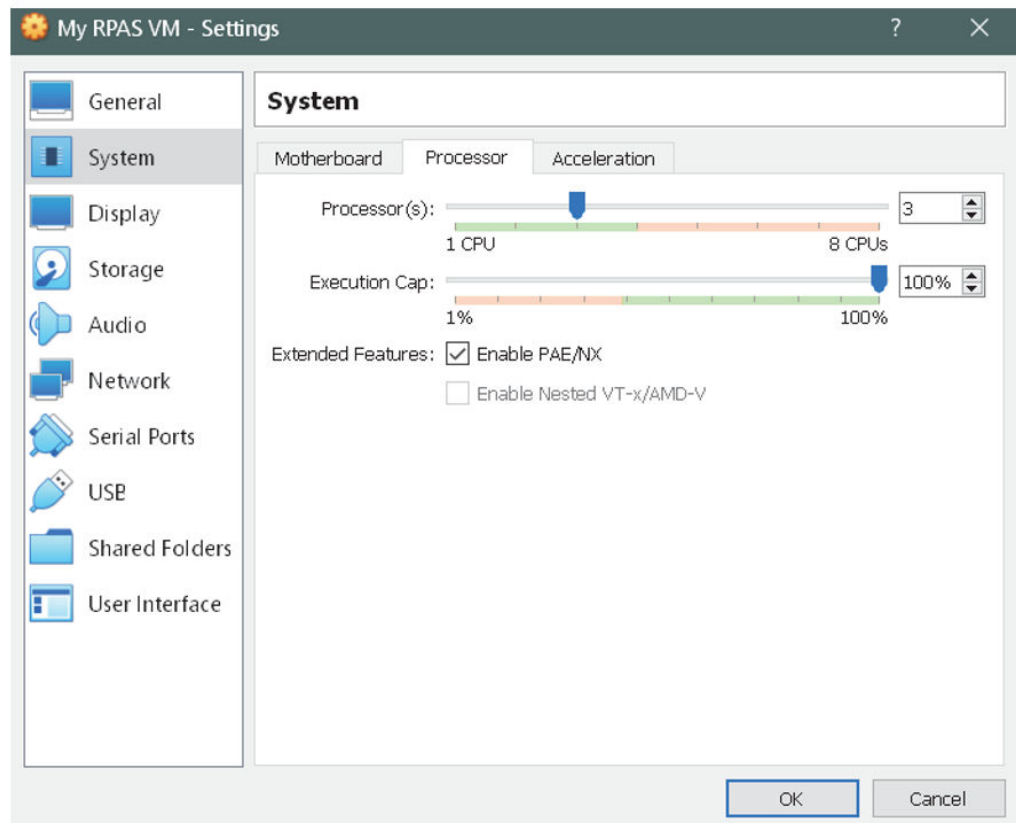
 **Note:**

Sometimes the settings screen shows an invalid settings warning. This warning can be ignored.

**Figure 3-8 System Memory Slider**

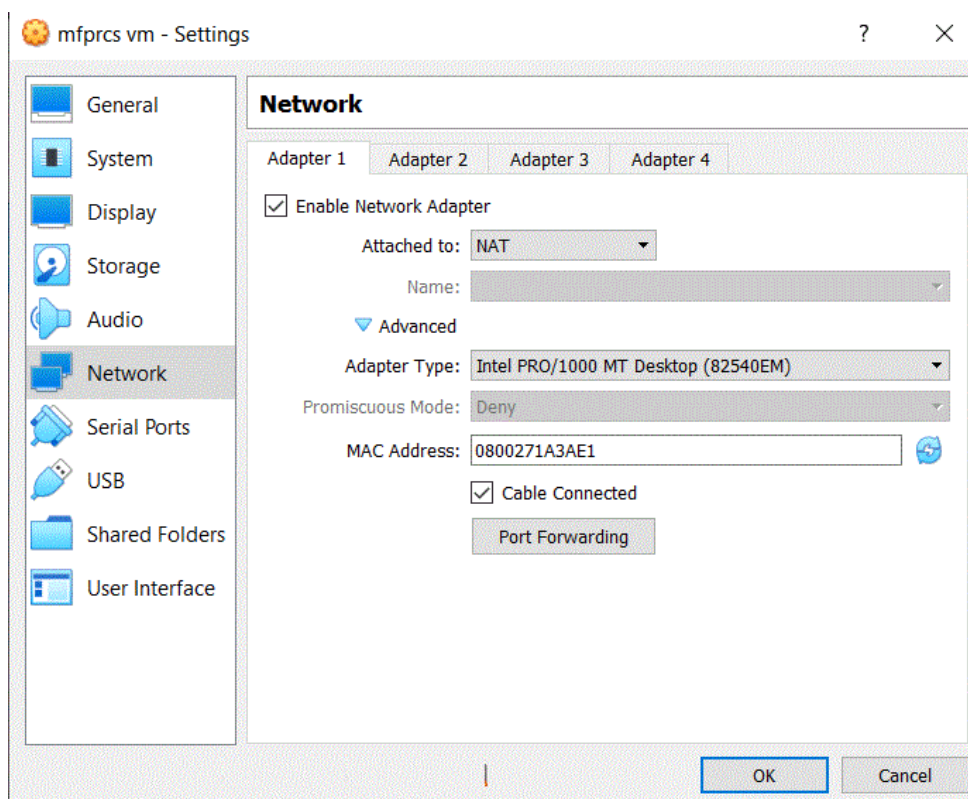
7. Select the **Processor** tab. If you run into any performance issues while using the VM and your host machine has multi-core processors, you may increase the available CPU for the VM by increasing the number of processors in the **Processor** tab (Figure 3-9).

Figure 3-9 System Processor CPU Change



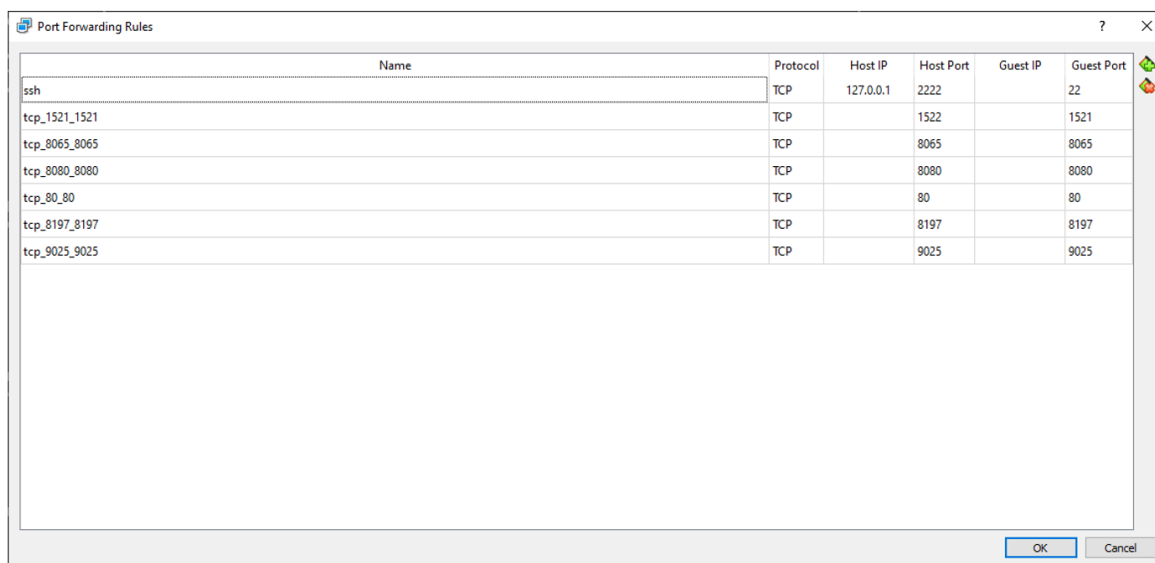
- Optional step- Only perform this step if someone else will use an RPASCE VM on the same network.

From the left panel, click **Network** and then click the **Circle** icon next to the MAC Address text box. This gives the virtual network card in the VM a new random MAC address. If the MAC Address setting is not visible, then click the **Advanced** icon.

**Figure 3-10** New Random MAC Address for the Virtual Network Card

9. Click **Port Forwarding**.

You should see the rule that forwards port 8080 inside the VM to port 8080 on the host machine. If you have some other application running on port 8080 of the host machine change the host port to an unused port number.

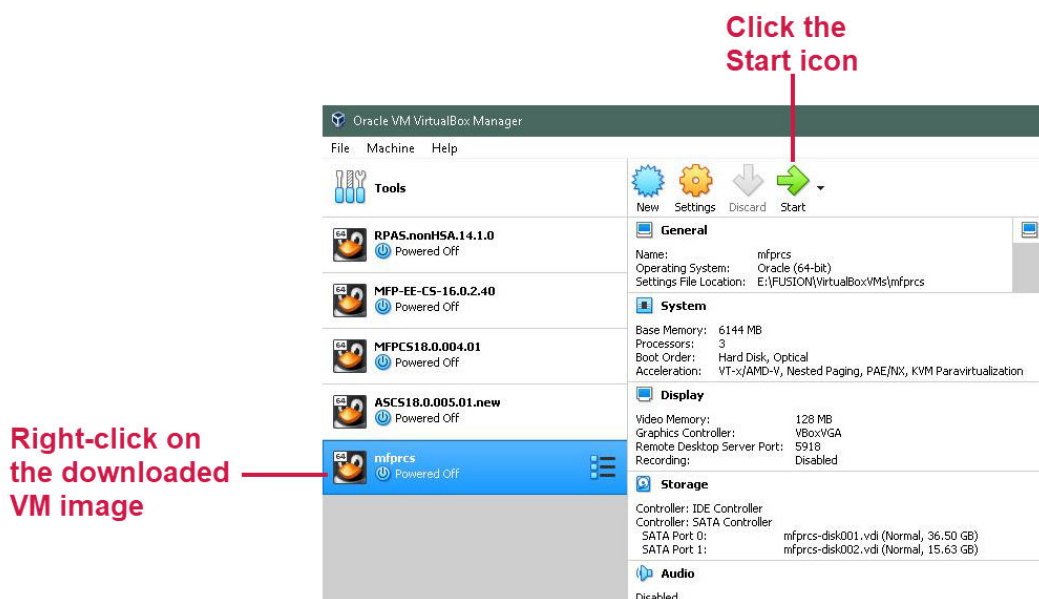
**Figure 3-11** Port Forwarding Rules Window

Click **OK**.

10. Start the imported image.

From the left panel of the VirtualBox, right-click on the VM image you downloaded and select **Start**. Alternately you can select the image and click the **Start** arrow icon from the top menu.

Figure 3-12 Starting the VM Image



11. In the grub boot-loader screen there is no action required. Let the VM automatically boot the default kernel.

Wait for OS to finish loading and it displays similar messages as shown in [Figure 3-13](#).

Figure 3-13 Load Messages

```
[ 83.512215] IPUS: Registered protocols (TCP, UDP, SCTP, AH, ESP)
[ 83.512664] IPUS: Connection hash table configured (size=4896, memory=64Kbytes)
[ 85.145210] IPUS: ipvs loaded.
[ 85.279498] IPUS: [rr] scheduler registered.
```

12. In a browser on the host machine launch the following URL:

`http://localhost/logs/startup.log`

When the VM is ready to be used, an **Environment is ready for use!** message displays as shown in [Figure 3-14](#).



Figure 3-14 VM is Ready Message

```

=====
start.ksh
=====
[start.ksh] Executing commands as user: oracle
[start.ksh]: Fri Jan 28 13:39:02 -05 2022 -- Waiting for RPAS stack services to come up...
Fri Jan 28 13:39:13 -05 2022 -- Waiting for service RPAS_http to reach 3/3 replicated running tasks...
Fri Jan 28 13:39:13 -05 2022 -- Waiting for service RPAS_rpasserver to reach 1/1 replicated running tasks...
Fri Jan 28 13:39:13 -05 2022 -- Waiting for service RPAS_launcher to reach 3/3 replicated running tasks...
Fri Jan 28 13:39:13 -05 2022 -- Waiting for service RPAS_taskdaemon to reach 1/1 replicated running tasks...
Fri Jan 28 13:39:13 -05 2022 -- Waiting for service RPAS_client to reach 1/1 replicated running tasks...
Fri Jan 28 13:40:30 -05 2022 -- Service RPAS_client has started successfully!
Fri Jan 28 13:41:25 -05 2022 -- Service RPAS_launcher has started successfully!
Fri Jan 28 13:41:25 -05 2022 -- Service RPAS_http has started successfully!
Fri Jan 28 13:41:25 -05 2022 -- Service RPAS_rpasserver has started successfully!
Fri Jan 28 13:41:25 -05 2022 -- Service RPAS_taskdaemon has started successfully!
[start.ksh]: Fri Jan 28 13:41:25 -05 2022 -- Creating RPAS service logs under /var/www/html/logs...
[start.ksh]: Fri Jan 28 13:41:26 -05 2022 -- PDS Property subgroup_max_parallel set to 4...

[start.ksh]: Fri Jan 28 13:41:26 -05 2022 -- Environment is ready for use! You may log into the RPAS Client at
http://localhost:8080/rpasceui
It is safe to close this window.

```

 **Note:**

This page may show older logs too, it is critical to check that the date and time matches the current time. The time shown is GMT-5 hours. Also, while waiting for the VM to be ready, refresh the page manually as it does not auto refresh.

## Using the VM

All the necessary processes needed for using the RPASCE application in the VM automatically start when the VM boots up. The system just needs a few minutes after the login screen appears to bring up all of the necessary processes. However depending on the resources available to the VM, the time required for startup will differ.

## Launching the RPASCE User Interface

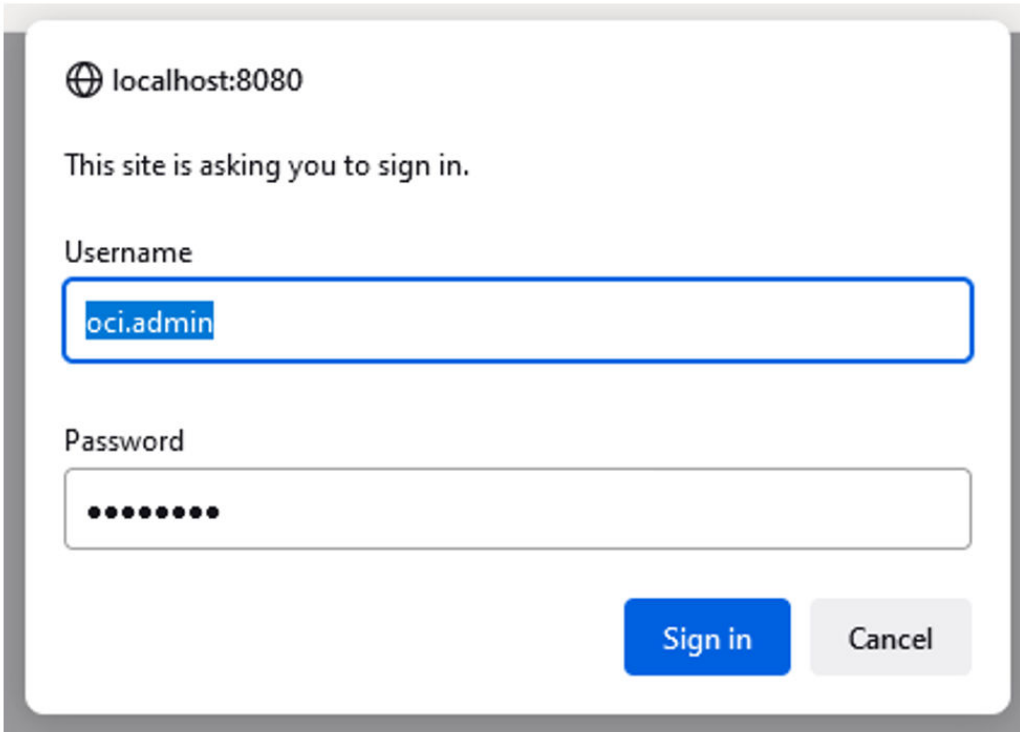
Perform the following steps to launch the RPASCE User Interface (UI).

1. Open a browser on the host machine where you started the VirtualBox software and paste the URL into the address bar and press **Enter**

<http://localhost:8080/rpasceui/>

Figure 3-15 shows the RPASCE UI Sign In, enter the Username: *oci.admin* and the Password: *Orcl1234*.

Figure 3-15 RPASCE UI Sign In

A screenshot of a web browser's sign-in dialog box. At the top left, there is a globe icon followed by the text "localhost:8080". Below this, the text "This site is asking you to sign in." is displayed. The form contains two input fields: "Username" with the text "oci.admin" entered, and "Password" with ten black dots representing a masked password. At the bottom right, there are two buttons: a blue "Sign in" button and a grey "Cancel" button.

The VM does not come with any applications prebuilt. Therefore on the initial login, a user only has bootstrap access and no task flows. Users can use the Online Admin Tools to build a GA or extended application.

2. To build the GA app using the input files present in the VM select the GA check boxes as shown in [Figure 3-16](#).

Refer to either the *Oracle Retail Demand Forecasting Cloud Service Administration Guide* for more details about building the application.

**Figure 3-16** Select Options for GA App Build

The screenshot shows a dialog box titled "Submit a New Admin Task" with a close button (X) in the top right corner. The dialog contains the following fields and options:

- Specify the arguments for task:
- Task Label: Build Application
- Exclusive Mode Message: (empty)
- Partition Dimension: dept
- Use GA Configuration with no extensibility?
- Use GA data?
- Overwrite Existing Application?
- Set RPAS\_TODAY in application: (empty)
- Batch Task Group to run after Application Build: post\_build

At the bottom right, there are four buttons: Cancel, < Previous, Next >, and Finish.

 **Note:**

Hierarchy data is now loaded after the application is built as a post-build step. Run the `post_build` batch that is available as part of GA.

Alternately the load Dimension Data task is available in the online Admin Tools and can be used to load the hierarchy data.

For providing input files for building the application, refer to the section, [Copying Files between the VM and the Host Desktop](#).

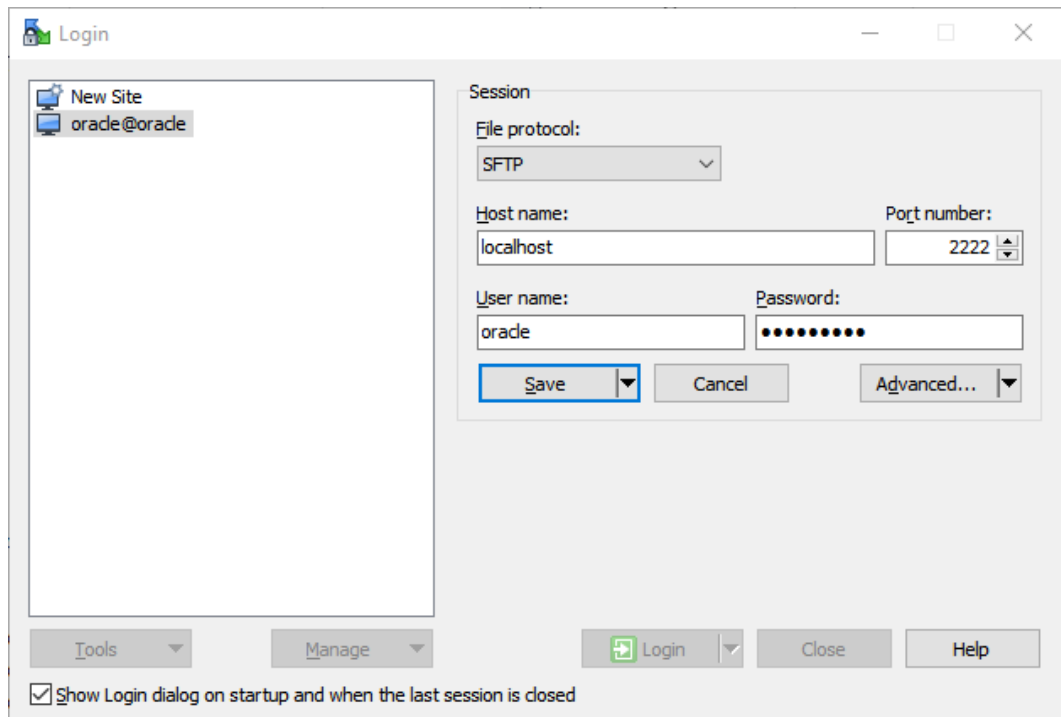
If **Use GA data?** is selected, it is recommended to set `RPAS_TODAY` in the application to **20190331** (March 31, 2019).

## Copying Files between the VM and the Host Desktop

Perform the following steps to share files and folders between the desktop and the VM.

1. Use an application like WinSCP to connect to the SSH port of the VM on **2222**. Enter the Username as: *oracle* and the Password as: *oracleV21*.

**Figure 3-17** Sharing Files



2. The incoming FTP location inside the VM is:

`/oracle/rpas/RPAS/ftp_incoming`

The outgoing FTP location inside the VM is:

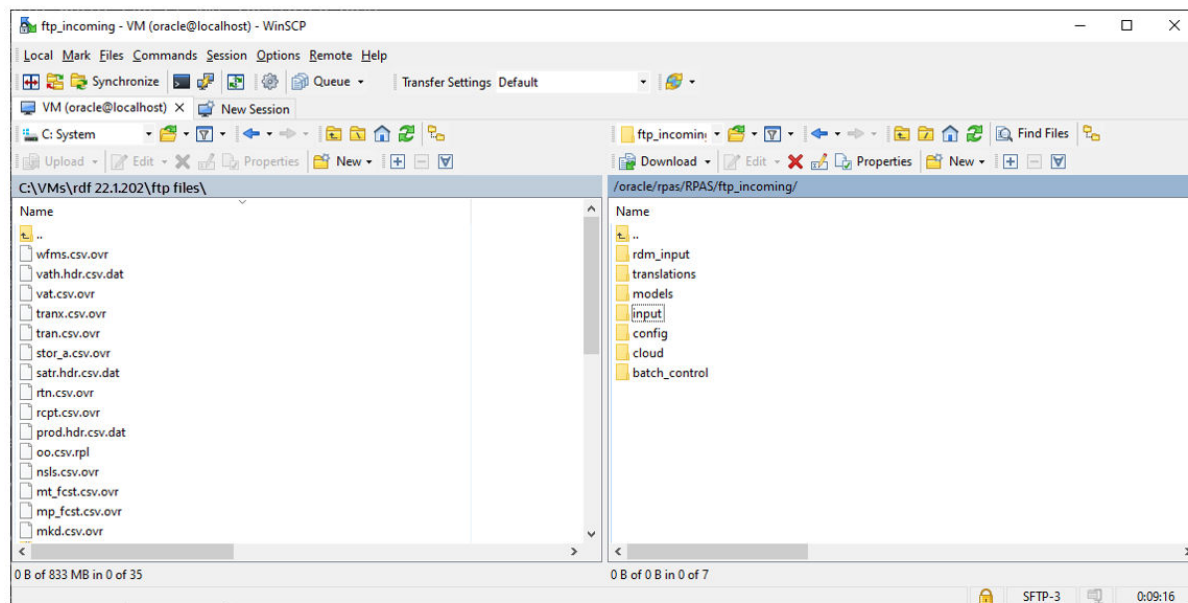
`/oracle/rpas/RPAS/ftp_outgoing`

The VM still uses the incoming and outgoing FTP locations although now in the Oracle Cloud RPAS applications use object storage for incoming and outgoing locations.

 **Note:**

For more details about placing files in incoming location for application build, batch or other OAT tasks, refer to the *Oracle Retail Demand Forecasting Cloud Service* documentation set.

Figure 3-18 FTP Locations



## Users in the VM

The following users are present in the VM.

The password for all users is set to: *Orcl1234*.



### Note:

It is not possible to add new users to the VM.

User Label	User Name	Administrator
OCI Administrator	oci.admin	Yes
Admin User 2	user2	Yes
Admin User 3	user3	Yes
Admin User 4	user4	Yes
Admin User 5	user5	Yes
Admin User 6	user6	Yes
Admin User 7	user7	Yes
Admin User 8	user8	Yes
Admin User 9	user9	Yes
Admin User 10	user10	Yes
Non-Admin User 1	nonadm1	No
Oracle Internal User	oracleintuser	Yes

User Label	User Name	Administrator
Non-Admin User 2	nonadm2	No
Administrator	adm	Yes
Administrator1	adm1	Yes
Administrator2	adm2	Yes
Administrator4	adm4	Yes
Administrator7	adm7	Yes
Administrator10	adm10	Yes
Admin User 1	user1	Yes

## Using SQL Developer

It is possible to connect a SQL developer running on the host machine to the database running in the VM.

Set the password for all the schema users as: **Orcl1234**

Enter the Service name as: **ORCLPDB1**

**Figure 3-19 Database Connection**

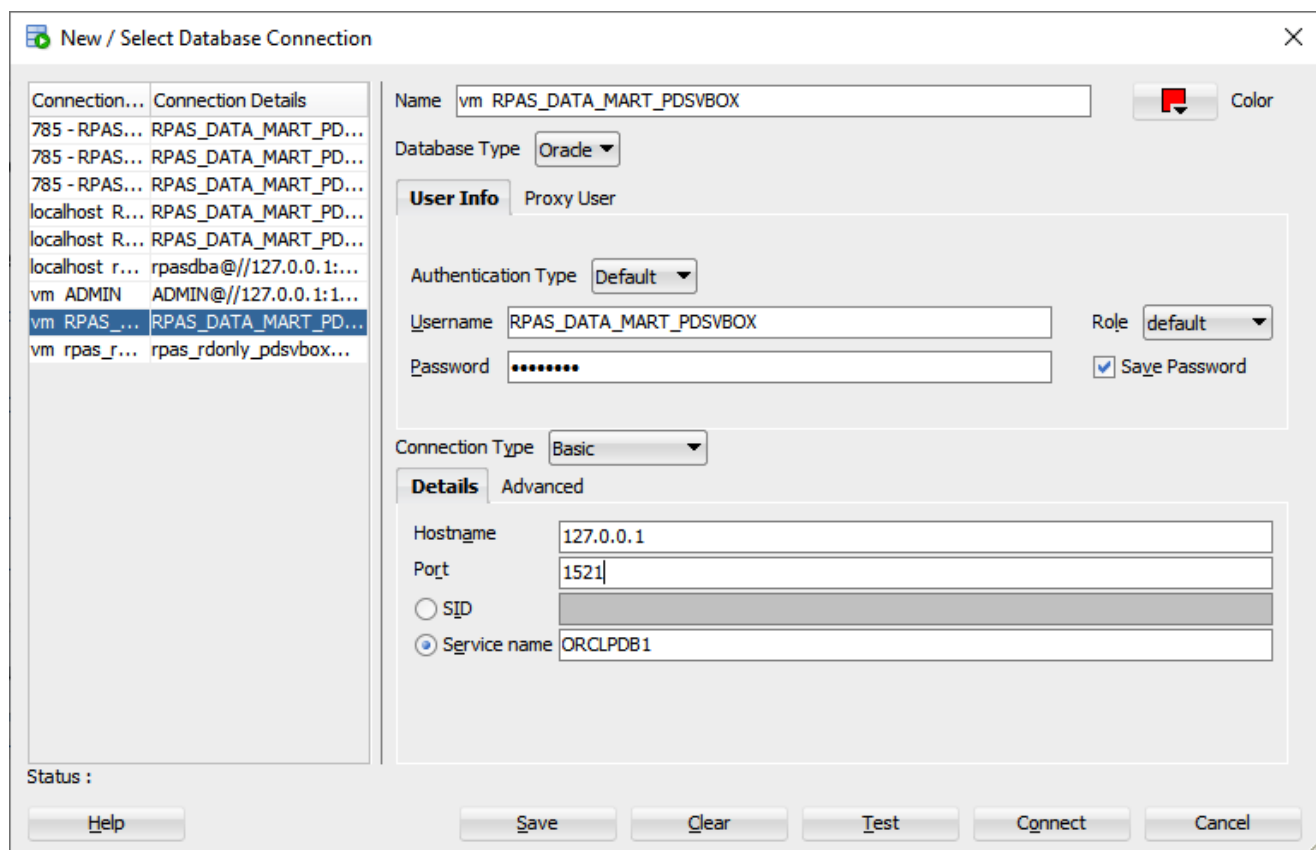


Table 3-1 lists the schema users

**Table 3-1 Schema Users**

Schema User	Username
rpas_data_mart	RPAS_DATA_MART_PDSVBOX
rpas_patch_user	RPAS_PATCH_PDSVBOX
rpas_batch_user	RPAS_BATCH_PDSVBOX
rpas_dimload_user	RPAS_DIMLOAD_PDSVBOX
rpas_factload_user	RPAS_FACTLOAD_PDSVBOX
rpas_hiermgr_user	RPAS_HIERMGR_PDSVBOX
rpas_wkbk_user	RPAS_WKBK_PDSVBOX
rpas_etl_user	RPAS_ETL_PDSVBOX
rpas_rdonly_user	RPAS_RDONLY_PDSVBOX
rpas_report_user	RPAS_REPORT_PDSVBOX

## Troubleshooting

If you have any of the following issues, follow the steps for troubleshooting:

- [Network Issues](#)
- [VirtualBox Error](#)
- [UI Login Issues](#)
- [SQL Developer Login Issues](#)

### Network Issues

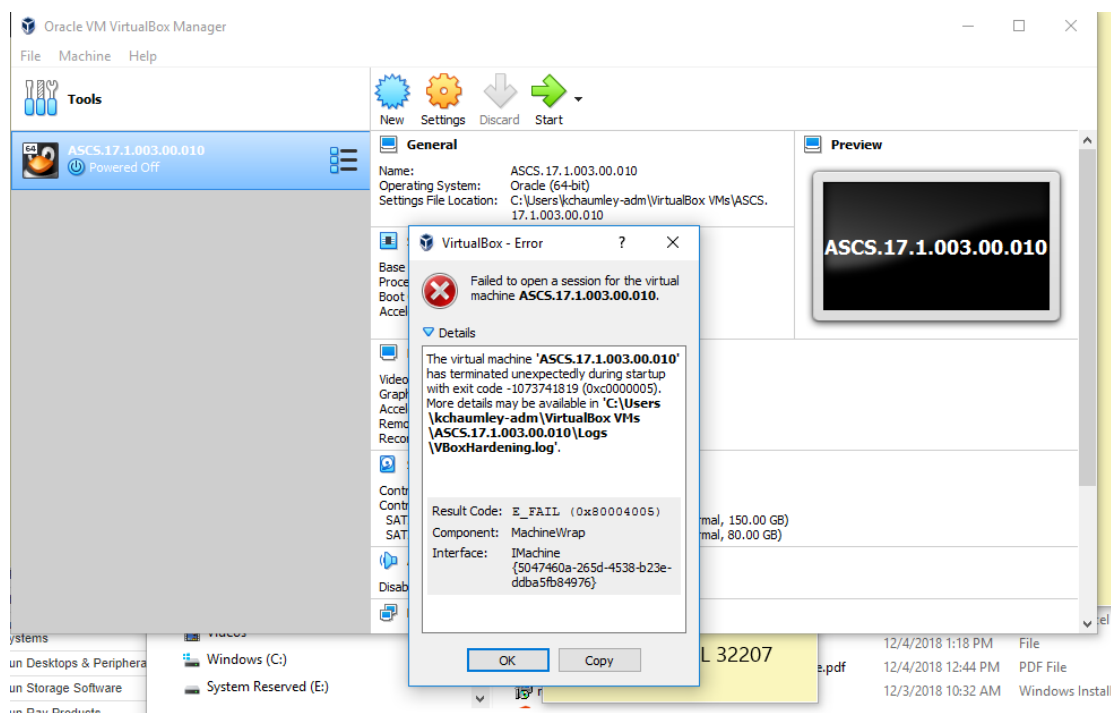
If you have many network interfaces you might have to make changes to Network Settings screen before starting the VM. The VM image has been tested only with Ethernet and Wi-Fi. If you use power line Ethernet or a network dongle or you have multiple network interface cards in your system you might need to make changes in the VM network settings screen.

Depending on your system configuration, you might need to enable additional adapters.

### VirtualBox Error

If you receive the following error shown in [Figure 3-20](#) while starting the image, you might have an unsupported version of VirtualBox. Install the latest VirtualBox software.

Figure 3-20 VirtualBox Error



### UI Login Issues

If you have trouble logging into the UI, check if port 8080 is being used by some other application on your host machine. Change the port mapping in the VM Network Setup screen and use the new port.

For any application related issues check the logs at this URL:

<http://localhost/logs/>

### SQL Developer Login Issues

If you have trouble connecting to the database using SQL developer, check if port 1521 is being used. Change the port mapping in the VM Network Setup screen and use the new port.



# A

## Appendix: Generating the Configuration for Plug-in Options

Demand Forecasting Cloud Service supports generating different configurations using plug-in automation for different configuration options.

### Creating the Configuration Using Plug-ins

Perform the following steps to extend and deploy the RDFCS application.

1. Download the RDF\_Starter\_Kit.zip and unzip the content.
2. Open the RPAS Cloud Edition Configuration Tools from the Starter Kit and open the configuration `RDF` within the starter kit.
3. Save the configuration and exit the RPAS Cloud Edition Configuration Tools.
4. Open the Cygwin from where config tools was launched and then go to the bin directory.

```
cd $RIDE_HOME/bin;
```

5. Ensure that `BSA_LOG_HOME` and `BSA_TEMP_DIR` are set to valid directories. For example:

```
mkdir -p "${ORACLE_HOME}/logs"
mkdir -p "${ORACLE_HOME}/temp"
export BSA_LOG_HOME="${ORACLE_HOME}/logs"
export BSA_TEMP_DIR="${ORACLE_HOME}/temp"
```

6. Run the following plug-in script to generate the `RDF` configuration. In the following example `-c` should be followed with full cygwin path where you have unzipped the starter kit.

The example uses the directory: `/cygdrive/c/Oracle/RDF_Starter_Kit`.

7. Run this script:

```
ra_auto_gen_config.ksh -c /cygdrive/c/Oracle/RDF_Starter_Kit -n RDF -
genAllFiles
```

The script should run and complete with non-zero return code as shown in [Figure A-1](#).

You can run the script with the `-clean` option to remove any customization from GA solutions.

```
ra_auto_gen_config.ksh -c /cygdrive/c/Oracle/RDF_Starter_Kit -n RDF -clean -
genAllFiles
```

Figure A-1 Run the Script

```

C:\cygdrive\c\Oracle\MFP_Starter_Kit\ConfigTools\bin
s.xml' complete
18:51:23 : INFORMATION : na_auto_gen_config.ksh[0] - Generate all files selected. Generating internal plugin data files.
18:51:24 : INFORMATION : na_auto_gen_config.ksh[0] - _call executing command 'rm -rf /cygdrive/c/Oracle/MFP_Starter_Kit/batch_control'
18:51:24 : INFORMATION : na_auto_gen_config.ksh[0] - _call of command 'rm -rf /cygdrive/c/Oracle/MFP_Starter_Kit/batch_control' complete
18:51:24 : INFORMATION : na_auto_gen_config.ksh[0] - _call executing command 'mkdir -p /cygdrive/c/Oracle/MFP_Starter_Kit/batch_control'
18:51:25 : INFORMATION : na_auto_gen_config.ksh[0] - _call of command 'mkdir -p /cygdrive/c/Oracle/MFP_Starter_Kit/batch_control' complete
18:51:25 : INFORMATION : na_auto_gen_config.ksh[0] - _call executing command 'rm -rf /cygdrive/c/Oracle/MFP_Starter_Kit/json'
18:51:25 : INFORMATION : na_auto_gen_config.ksh[0] - _call of command 'rm -rf /cygdrive/c/Oracle/MFP_Starter_Kit/json' complete
18:51:26 : INFORMATION : na_auto_gen_config.ksh[0] - _call executing command 'mkdir -p /cygdrive/c/Oracle/MFP_Starter_Kit/json'
18:51:26 : INFORMATION : na_auto_gen_config.ksh[0] - _call of command 'mkdir -p /cygdrive/c/Oracle/MFP_Starter_Kit/json' complete
18:51:26 : INFORMATION : na_auto_gen_config.ksh[0] - _call executing command 'execPluginTask.sh MFPCS=com.oracle.rgbu.mfpcs.plugin.installer.MFP
C:\cygdrive\c\Oracle\MFP_Starter_Kit\batch_control /cygdrive/c/Oracle/MFP_Starter_Kit/json
18:51:38 : INFORMATION : na_auto_gen_config.ksh[0] - _call of command 'execPluginTask.sh MFPCS=com.oracle.rgbu.mfpcs.plugin.installer.MFPCSData
cygdrive/c/Oracle/MFP_Starter_Kit/batch_control /cygdrive/c/Oracle/MFP_Starter_Kit/json' complete
18:51:38 : INFORMATION : na_auto_gen_config.ksh[0] - na_auto_gen_config.ksh completed.
18:51:38 : INFORMATION : na_auto_gen_config.ksh[0] - Program completed successfully.
18:51:38 : INFORMATION : na_auto_gen_config.ksh[0] - Exiting script with code: 0
18:51:39 : INFORMATION : na_auto_gen_config.ksh[0] - Insufficient parameters to export log file package; skipping.
    
```

8. After the solution is generated, zip the **RDF** folder and name it as **RDF\_config.zip**. It can be used during application build or patching of the configuration.