

Oracle[®] Retail Home

User Guide



Release 23.1.201.0

F77462-01

April 2023

The Oracle logo, consisting of a solid red square with the word "ORACLE" in white, uppercase, sans-serif font centered within it.

ORACLE[®]

Oracle Retail Home User Guide, Release 23.1.201.0

F77462-01

Copyright © 2023, Oracle and/or its affiliates.

This software and related documentation are provided under a license agreement containing restrictions on use and disclosure and are protected by intellectual property laws. Except as expressly permitted in your license agreement or allowed by law, you may not use, copy, reproduce, translate, broadcast, modify, license, transmit, distribute, exhibit, perform, publish, or display any part, in any form, or by any means. Reverse engineering, disassembly, or decompilation of this software, unless required by law for interoperability, is prohibited.

The information contained herein is subject to change without notice and is not warranted to be error-free. If you find any errors, please report them to us in writing.

If this is software, software documentation, data (as defined in the Federal Acquisition Regulation), or related documentation that is delivered to the U.S. Government or anyone licensing it on behalf of the U.S. Government, then the following notice is applicable:

U.S. GOVERNMENT END USERS: Oracle programs (including any operating system, integrated software, any programs embedded, installed, or activated on delivered hardware, and modifications of such programs) and Oracle computer documentation or other Oracle data delivered to or accessed by U.S. Government end users are "commercial computer software," "commercial computer software documentation," or "limited rights data" pursuant to the applicable Federal Acquisition Regulation and agency-specific supplemental regulations. As such, the use, reproduction, duplication, release, display, disclosure, modification, preparation of derivative works, and/or adaptation of i) Oracle programs (including any operating system, integrated software, any programs embedded, installed, or activated on delivered hardware, and modifications of such programs), ii) Oracle computer documentation and/or iii) other Oracle data, is subject to the rights and limitations specified in the license contained in the applicable contract. The terms governing the U.S. Government's use of Oracle cloud services are defined by the applicable contract for such services. No other rights are granted to the U.S. Government.

This software or hardware is developed for general use in a variety of information management applications. It is not developed or intended for use in any inherently dangerous applications, including applications that may create a risk of personal injury. If you use this software or hardware in dangerous applications, then you shall be responsible to take all appropriate fail-safe, backup, redundancy, and other measures to ensure its safe use. Oracle Corporation and its affiliates disclaim any liability for any damages caused by use of this software or hardware in dangerous applications.

Oracle®, Java, and MySQL are registered trademarks of Oracle and/or its affiliates. Other names may be trademarks of their respective owners.

Intel and Intel Inside are trademarks or registered trademarks of Intel Corporation. All SPARC trademarks are used under license and are trademarks or registered trademarks of SPARC International, Inc. AMD, Epyc, and the AMD logo are trademarks or registered trademarks of Advanced Micro Devices. UNIX is a registered trademark of The Open Group.

This software or hardware and documentation may provide access to or information about content, products, and services from third parties. Oracle Corporation and its affiliates are not responsible for and expressly disclaim all warranties of any kind with respect to third-party content, products, and services unless otherwise set forth in an applicable agreement between you and Oracle. Oracle Corporation and its affiliates will not be responsible for any loss, costs, or damages incurred due to your access to or use of third-party content, products, or services, except as set forth in an applicable agreement between you and Oracle.

Contents

Send Us Your Comments

Preface

1 Home Dashboard

Retail Home Dashboard	1-1
Dashboard Controls	1-1
Roles	1-2
Refresh	1-2
Tiles	1-2
Outage Banner	1-4
Batch Status Banner	1-5

2 Welcome Screen

3 Requesting Role Access

Role Request	3-1
Current Role Access	3-1
Requesting Access	3-2
Removing Access	3-2
Request History	3-3
Accessibility Features	3-4
Color Settings	3-4
Screen Readers	3-4

4 Report Catalog

Send Us Your Comments

Oracle Retail Home User Guide, Release 22.1.201.0

Oracle welcomes customers' comments and suggestions on the quality and usefulness of this document.

Your feedback is important, and helps us to best meet your needs as a user of our products. For example:

- Are the implementation steps correct and complete?
- Did you understand the context of the procedures?
- Did you find any errors in the information?
- Does the structure of the information help you with your tasks?
- Do you need different information or graphics? If so, where, and in what format?
- Are the examples correct? Do you need more examples?

If you find any errors or have any other suggestions for improvement, then please tell us your name, the name of the company who has licensed our products, the title and part number of the documentation and the chapter, section, and page number (if available).



Note:

Before sending us your comments, you might like to check that you have the latest version of the document and if any concerns are already addressed. To do this, access the Online Documentation available on the Oracle Technology Network Web site. It contains the most current Documentation Library plus all documents revised or released recently.

Send your comments to us using the electronic mail address: retail-doc_us@oracle.com

Please give your name, address, electronic mail address, and telephone number (optional).

If you need assistance with Oracle software, then please contact your support representative or Oracle Support Services.

If you require training or instruction in using Oracle software, then please contact your Oracle local office and inquire about our Oracle University offerings. A list of Oracle offices is available on our Web site at <http://www.oracle.com>.

Preface

This Administration Guide provides critical information about the processing and operating details of the Retail Analytics Platform, including the following

- System configuration settings
- Technical architecture
- Functional integration dataflow across the enterprise
- Batch processing

Audience

This guide is for:

- Systems administration and operations personnel
- Systems analysts
- Integrators and implementers
- Business analysts who need information about the Retail Analytics Platform processes and interfaces

Documentation Accessibility

For information about Oracle's commitment to accessibility, visit the Oracle Accessibility Program website at <http://www.oracle.com/pls/topic/lookup?ctx=acc&id=docacc>

Access to Oracle Support

Oracle customers that have purchased support have access to electronic support through My Oracle Support. For information, visit <http://www.oracle.com/pls/topic/lookup?ctx=acc&id=info> or visit <http://www.oracle.com/pls/topic/lookup?ctx=acc&id=trs> if you are hearing impaired.

Customer Support

To contact Oracle Customer Support, access My Oracle Support at the following URL:

<https://support.oracle.com>

When contacting Customer Support, please provide the following:

- Product version and program/module name
- Functional and technical description of the problem (include business impact)
- Detailed step-by-step instructions to re-create
- Exact error message received
- Screen shots of each step you take

Oracle Help Center (docs.oracle.com)

Oracle Retail Product documentation is available on the following website <https://docs.oracle.com/en/industries/retail/html>

Comments and Suggestions

Please give us feedback about Oracle Retail Help and Guides. You can send an e-mail to: retail-doc_us@oracle.com

Oracle Retail Cloud Services and Business Agility

The Oracle Retail Analytics Platform Cloud Services are hosted in the Oracle Cloud with the security features inherent to Oracle technology and a robust data center classification, providing significant uptime. The Oracle Cloud team is responsible for installing, monitoring, patching, and upgrading retail software.

Included in the service is continuous technical support, access to software feature enhancements, hardware upgrades, and disaster recovery. The Cloud Service model helps to free customer IT resources from the need to perform these tasks, giving retailers greater business agility to respond to changing technologies and to perform more value-added tasks focused on business processes and innovation.

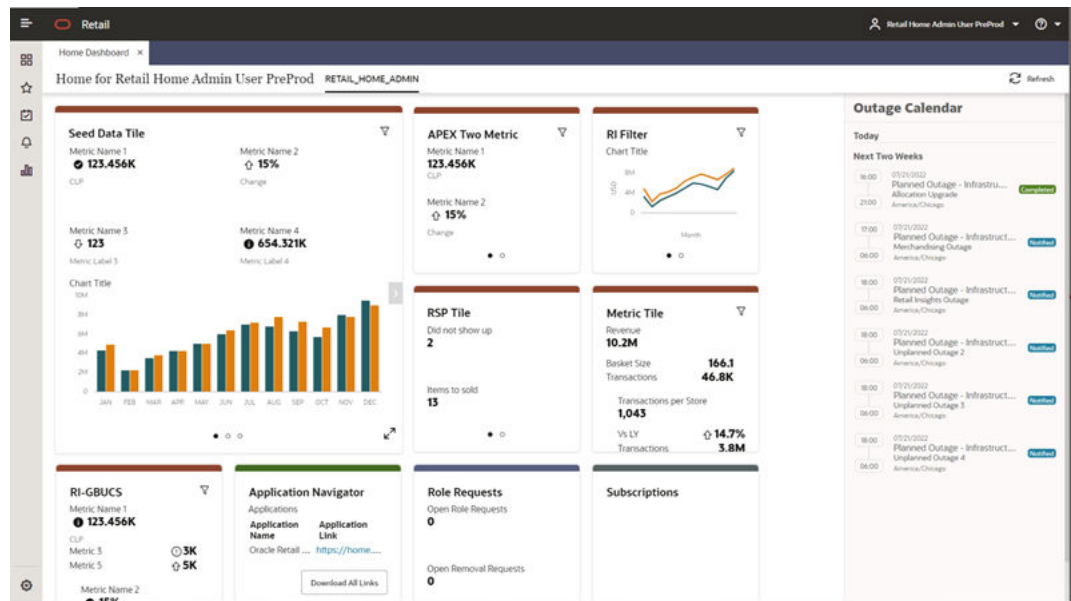
Oracle Retail Software Cloud Service is acquired exclusively through a subscription service (SaaS) model. This shifts funding from a capital investment in software to an operational expense. Subscription-based pricing for retail applications offers flexibility and cost effectiveness.

1

Home Dashboard

Retail Home is a portal-type application for the RGPU enterprise. The UI consists of a tile-based configurable dashboard that highlights important metrics and KPIs across RGPU applications. The profile-based dashboards are configured by a Retail Home administrator for each enterprise role.

Figure 1-1 Home Dashboard



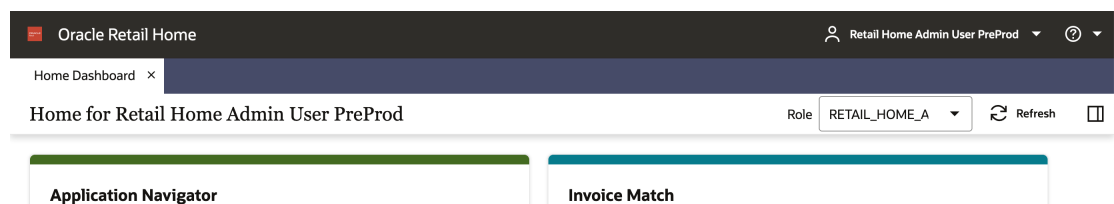
Retail Home Dashboard

The user can access the Retail Home dashboard via the Tasks menu. To access the dashboard, click Home Dashboard in the task menu.

Dashboard Controls

The user can see a set of controls at the top of the dashboard. On this bar, the user can see and select their current role and refresh the data on the dashboard.

Figure 1-2 Dashboard Controls



Roles

Roles define what information a user sees on the dashboard. The selected role determines which tiles appear on the dashboard, and which reports, if any, appears in the banner and contextual area. Roles must be configured by an administrator before the user will see any content on their dashboard.

Users who have more than one role can switch between the roles that are assigned to them. To see the list of assigned roles, click on the Role LOV near the end of the banner.



Note:

Roles will only be listed if the user has been granted that role, and if a dashboard has been defined for that role.

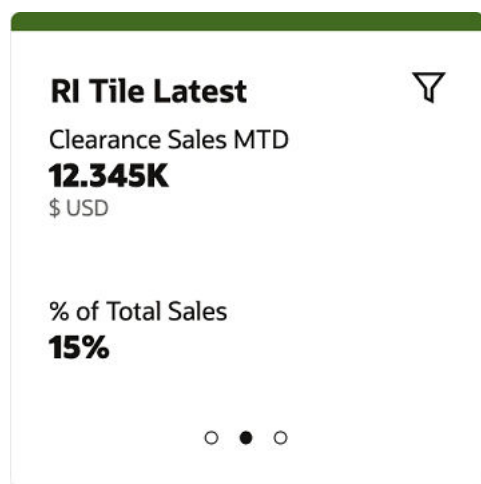
Refresh

The user can refresh their dashboards using the Refresh button.

Tiles

The main area of the dashboard contains a collection of tiles. A tile may correspond to an application, link, or other source of information which the user can access. Inside a tile, the user may find at-a-glance information such as metrics, reports, user notifications, links, or other relevant content, depending on how the tile was configured.

Figure 1-3 Dashboard Tile



Each tile may have multiple pages of content. The user has several options to move between pages of content.

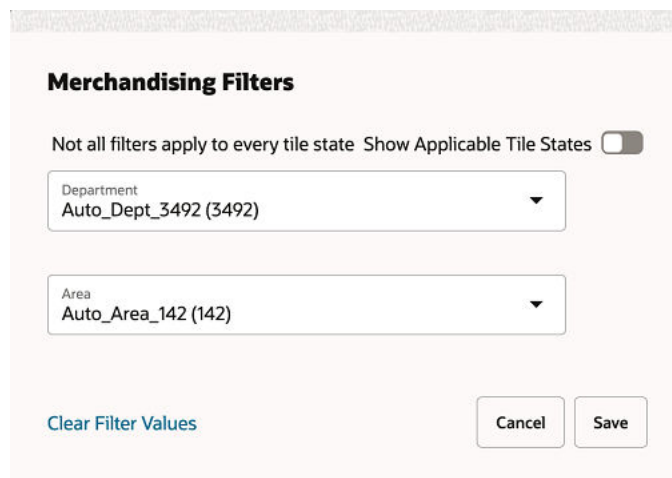
First, RGBU enterprise application tiles that have been configured to support favorites and notifications will display a favorites and notifications icon in the tile header.

Second, when the user hovers a tile, previous and next arrows will appear on the sides of the tile. By clicking these arrows, the user will move to the corresponding page in the tile.

Third, at the bottom of the tile, the user can see a row of icons corresponding to each page in the tile, where the current page's icon filled in. The user can click any of these icons to go directly to that page within the tile.

Fourth, tiles may be configured to support filter options specified by the user. Pressing the filter icon in the upper-right corner of the tile will open the filter dialog to provide values to filter data by:

Figure 1-4 Filter Dialog for a Tile



When dashboard tiles are initially loaded, if required filters do not have values entered, the following message is displayed for the corresponding tile page.

Figure 1-5 No Data to Display



The user will have to click on the filter icon to enter the required filter values before tile page can be rendered with content.

Outage Banner

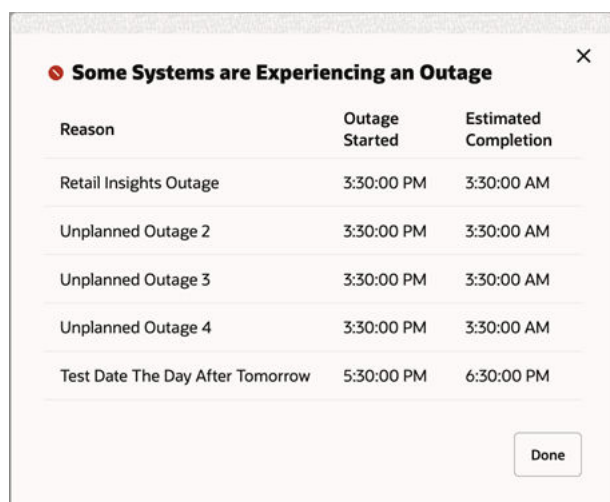
The dashboard displays a banner to let the Retail Home users know about any current outages. This banner is displayed in the same area as the batch status banner.

Figure 1-6 Outage Banner



- The banner displays a “Some Systems are Experiencing an Outage” message with the following details:
 - Name of the application impacted by the outage.
 - Reason for the outage.
 - “Outage Started” text with the outage start time.
 - “Estimated Completion” text with the scheduled completion time.
- The outage details for the application(s) are removed once the intended task is complete, even if it's before the Estimated Completion timestamp.
- The “Estimated Completion” time is updated if the outage is extended beyond the Estimated Completion timestamp.
- If there are than 3 outages listed on the banner, a **More** link is displayed for the overflow.
- When the **More** link is clicked, it presents all the current outages in an error modal dialog. Click **Done** to close the modal dialog.

Figure 1-7 Outage Banner – All Current Outages



Some Systems are Experiencing an Outage ✕

Reason	Outage Started	Estimated Completion
Retail Insights Outage	3:30:00 PM	3:30:00 AM
Unplanned Outage 2	3:30:00 PM	3:30:00 AM
Unplanned Outage 3	3:30:00 PM	3:30:00 AM
Unplanned Outage 4	3:30:00 PM	3:30:00 AM
Test Date The Day After Tomorrow	5:30:00 PM	6:30:00 PM

Done

Batch Status Banner

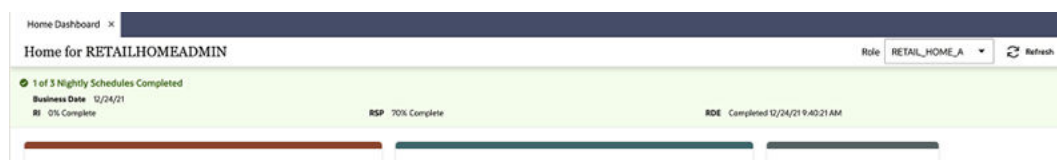
The dashboard displays a banner while batch jobs are currently running or active. If there are any POM jobs currently active or running, the Batch Schedule Banner will be displayed below the [Outage Banner](#) and moves back to the top once all the outages are complete.



Note:

Some Oracle Retail Products may not allow users to access the application while a batch process is running. Please consult the product-specific documentation.

Figure 1-8 Batch Status Banner



Home Dashboard x

Home for RETAILHOMEADMIN Role: RETAIL_HOME_A Refresh

1 of 3 Nightly Schedules Completed

Business Date: 12/24/21

0% Complete

RSP: 70% Complete

RDE: Completed 12/24/21 9:40:21 AM

The banner displays the following for the current business date:

- The number of jobs scheduled and the number that are complete
- After a job is complete, a **Completed** status beside the job name, along with the completion time.
- If a job is currently running, the banner shows the percentage of completion.
- If a job hasn't started, the banner shows **0% Complete** for the job.

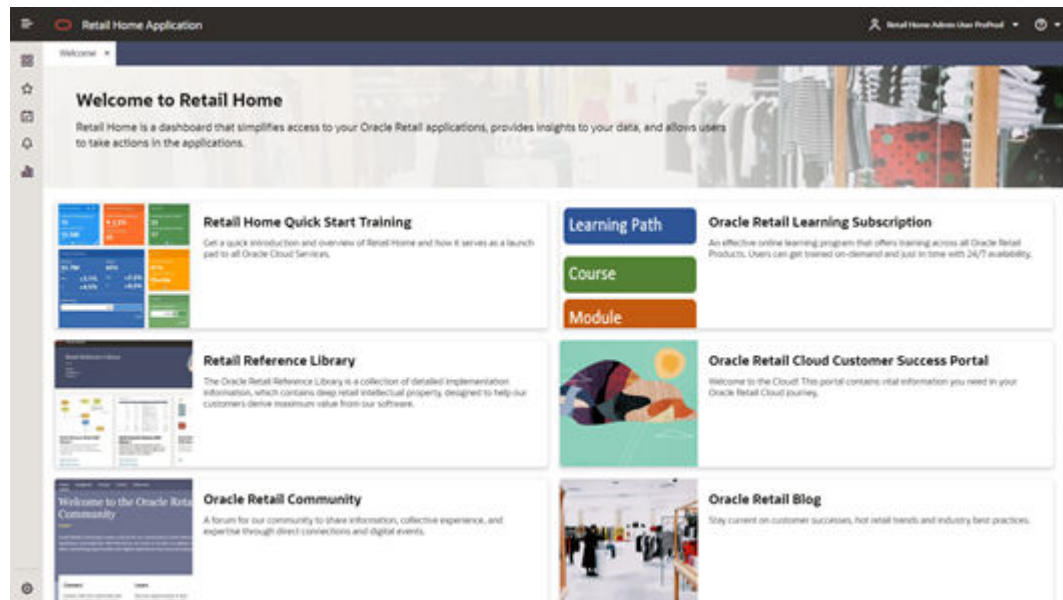
2

Welcome Screen

The Welcome Screen, shown when a user first logs in to Retail Home, contains links to the following useful items. Descriptions of each of these are on the Welcome Screen.

- Retail Home Quick Start Training
- Oracle Retail Learning Subscription
- Retail Reference Library
- Oracle Retail Cloud Customer Success Portal
- Oracle Retail Community
- Oracle Retail Blog
- Oracle Retail Rack

Figure 2-1 Welcome Screen Showing the Retail Reference Library



3

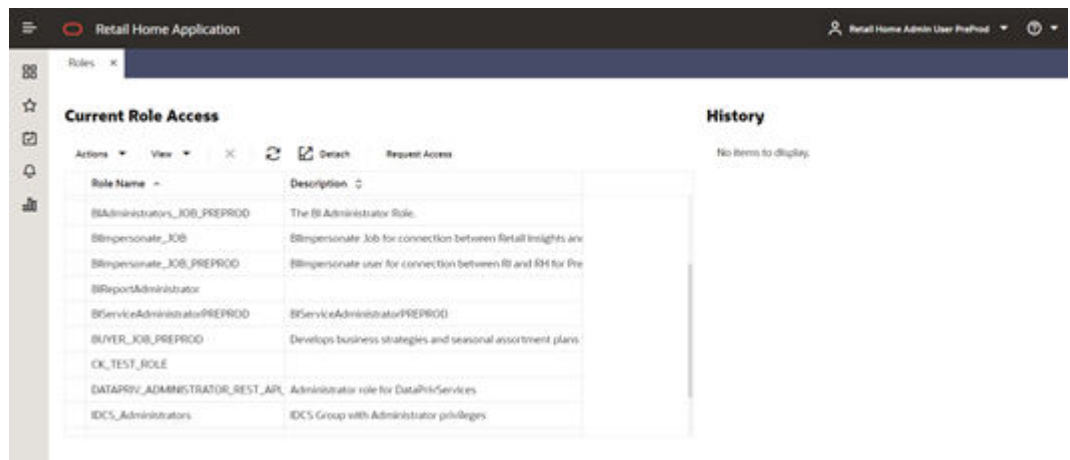
Requesting Role Access

In RGBU enterprise applications, roles are used to determine which applications, data, and actions the user has access to. Retail Home provides users with a screen to request access to new roles, as well as request that roles be removed from their access.

Role Request

The user can access the Role Requests screen in Retail Home through the Tasks menu. To access the Role Requests screen, click Roles in the Tasks menu. The Role Requests screen is shown in the diagram below.

Figure 3-1 Role Request Screen



Current Role Access

On the screen, the user will see a table labeled Current Role Access (see below.) This table lists all the roles currently assigned to the user, along with a description of each role.

Figure 3-2 Current Role Access

Current Role Access

Role Name	Description
BIAdministrators_JOB_PREPROD	The BI Administrator Role.
DATAPRV_ADMINISTRATOR_REST_API_ROLE	Administrator role for DataPrivServices
RETAIL_ASYNC_TASK_JOB	RETAIL_ASYNC_TASK_JOB
RetailVisualAnalyzer_JOB	The Retail Visual Analyzer gives Visual Analyzer only Access.

Requesting Access

To request access to a new role, the user must select the Request Access button on the table's toolbar or select the table's Actions menu and then select the Request Access item from the menu.

Figure 3-3 Requesting Access

The screenshot shows a web interface for requesting access. At the top, there's a tab labeled 'Roles' and a window title 'Request Access for Self'. The main area is titled 'Select Roles'. It features a search filter, a sort dropdown (currently 'Name, A-Z'), and a list of roles. The role 'ACCOUNTS_PAYABLE_MANAGER_JOB' is selected. To the right, there's a 'Justification' field and an 'Approver's Email' field with the value 'navya.nn@oracle.com'.

After doing this, the user will see the Request Access for Self form, shown above.

Here, the user can search, filter, and select the roles they want to access. To find a specific role, the user may change the sort order between **Name, A-Z** and **Name, Z-A**. The user may also enter part or all of the role's name into the filter input box, which will filter the results to only those roles with names that contain the filter text.

The user may select one or more roles from this list.

After selecting roles, the user must provide some business justification for the request in the Justification field. Below the Justification field, the user will also see the **Approver's Email** who will be responsible for handling their request.

Finally, the user may select the Submit button when they have finished filling out the request. A request will be submitted for each selected role. The user may also select Cancel at any time if they do not want to submit the request.

Removing Access

To request to remove access to a role in the Current Role Access table, the user must first select the role in the table. Then, the user must select the delete icon button on the table's toolbar, or select the table's Actions menu and then select the Remove Access item from the menu.

Figure 3-4 Remove Access

Remove Access

Remove access from BIImpersonate_JOB_PREPROD

* Justification Required

Approver's Email sivaranjani.sundarraaj@oracle.com

Cancel OK

After doing this, the user will see the Remove Access prompt, shown above.

Similar to requesting access, the user will be prompted for justification for the request and will see the Approver's Email.

Request History

On the Role Requests screen, the user will also see their History of requests and removals.

Figure 3-5 Request History

History			
ALLOCATION_MANAGER_JOB	Access Requested	11/06/18	admin@somewhere.com
ALLOCATOR_JOB	Removal Requested	11/06/18	admin@somewhere.com
ARCHITECT_JOB	Access Requested	11/06/18	admin@somewhere.com
ARCHITECT_JOB	Access Requested	11/06/18	admin@somewhere.com

For each item in the history, the user can see which role was requested, whether they requested to access or remove access to the role, the date that the request was made, and the e-mail address of the approver who is responsible for handling their request.

Accessibility Features

Retail Home runs in browsers and is designed to integrate with existing browser accessibility options and tools. In most cases no additional effort is required for accessibility beyond what a user already does for their browser of choice. Some specific configurations that may be useful are detailed in this chapter.

Color Settings

The color display of dashboard tiles can be customized by administrators. All color schemes are designed to be high-contrast, and all functional UI elements use high-contrast color settings.

Graphs on tiles leverage the Oracle JET UI to display data in an accessible fashion and integrating applications can fully customize the display of the data.

Screen Readers

The Retail Home application is fully compatible with screen readers. All functional elements are properly labelled and all UI elements support keyboard interaction.

4

Report Catalog

A new reports menu item is available in the Retail Home sidebar that allows access to OBIEE reports. Click an item from this menu to open the report in a new tab. The user can access the Report Catalog in Retail Home through the **Reports** menu. To access the reports, click **Reports Library** in the **Reports** menu.

Figure 4-1 Reports Catalog

