

# Oracle® Retail Integration Cloud Service

## Java Messaging Service Console Guide



Release 23.1.201.0

F80865-01

April 2023

The Oracle logo, consisting of a solid red square with the word "ORACLE" in white, uppercase, sans-serif font centered within it.

ORACLE®

Copyright © 2023, Oracle and/or its affiliates.

This software and related documentation are provided under a license agreement containing restrictions on use and disclosure and are protected by intellectual property laws. Except as expressly permitted in your license agreement or allowed by law, you may not use, copy, reproduce, translate, broadcast, modify, license, transmit, distribute, exhibit, perform, publish, or display any part, in any form, or by any means. Reverse engineering, disassembly, or decompilation of this software, unless required by law for interoperability, is prohibited.

The information contained herein is subject to change without notice and is not warranted to be error-free. If you find any errors, please report them to us in writing.

If this is software, software documentation, data (as defined in the Federal Acquisition Regulation), or related documentation that is delivered to the U.S. Government or anyone licensing it on behalf of the U.S. Government, then the following notice is applicable:

U.S. GOVERNMENT END USERS: Oracle programs (including any operating system, integrated software, any programs embedded, installed, or activated on delivered hardware, and modifications of such programs) and Oracle computer documentation or other Oracle data delivered to or accessed by U.S. Government end users are "commercial computer software," "commercial computer software documentation," or "limited rights data" pursuant to the applicable Federal Acquisition Regulation and agency-specific supplemental regulations. As such, the use, reproduction, duplication, release, display, disclosure, modification, preparation of derivative works, and/or adaptation of i) Oracle programs (including any operating system, integrated software, any programs embedded, installed, or activated on delivered hardware, and modifications of such programs), ii) Oracle computer documentation and/or iii) other Oracle data, is subject to the rights and limitations specified in the license contained in the applicable contract. The terms governing the U.S. Government's use of Oracle cloud services are defined by the applicable contract for such services. No other rights are granted to the U.S. Government.

This software or hardware is developed for general use in a variety of information management applications. It is not developed or intended for use in any inherently dangerous applications, including applications that may create a risk of personal injury. If you use this software or hardware in dangerous applications, then you shall be responsible to take all appropriate fail-safe, backup, redundancy, and other measures to ensure its safe use. Oracle Corporation and its affiliates disclaim any liability for any damages caused by use of this software or hardware in dangerous applications.

Oracle®, Java, and MySQL are registered trademarks of Oracle and/or its affiliates. Other names may be trademarks of their respective owners.

Intel and Intel Inside are trademarks or registered trademarks of Intel Corporation. All SPARC trademarks are used under license and are trademarks or registered trademarks of SPARC International, Inc. AMD, Epyc, and the AMD logo are trademarks or registered trademarks of Advanced Micro Devices. UNIX is a registered trademark of The Open Group.

This software or hardware and documentation may provide access to or information about content, products, and services from third parties. Oracle Corporation and its affiliates are not responsible for and expressly disclaim all warranties of any kind with respect to third-party content, products, and services unless otherwise set forth in an applicable agreement between you and Oracle. Oracle Corporation and its affiliates will not be responsible for any loss, costs, or damages incurred due to your access to or use of third-party content, products, or services, except as set forth in an applicable agreement between you and Oracle.

# Contents

## Send Us Your Comments

---

### Preface

---

Audience	vi
Documentation Accessibility	vi
Customer Support	vi
Improved Process for Oracle Retail Documentation Corrections	vi
Oracle Retail Documentation on the Oracle Help Center (docs.oracle.com)	vii
Conventions	vii

## 1 Introduction

---

360½ View of AQ JMS	1-1
Need for a JMS Administration Application	1-2
Concepts	1-2
Oracle Streams AQ JMS	1-2
Accessibility	1-3

## 2 Navigation and Help

---

Introducing the User Interface	2-1
Log in to JMS Console	2-1
Live Monitor	2-2
Browse JMS	2-4
Manage JMS	2-6
Publishing Messages to a JMS Topic	2-7
Edit Properties	2-9
Enabling Email Notification Alerts	2-9
Resetting Preferences to Default Factory Settings	2-10
Dump Message	2-10
Drain Messages	2-11
Configure	2-11

## Glossary

---

# Send Us Your Comments

Oracle Retail Integration Cloud Service Java Messaging Service Console Guide, Release 23.1.201.0

Oracle welcomes customers' comments and suggestions on the quality and usefulness of this document.

Your feedback is important, and helps us to best meet your needs as a user of our products. For example:

- Are the implementation steps correct and complete?
- Did you understand the context of the procedures?
- Did you find any errors in the information?
- Does the structure of the information help you with your tasks?
- Do you need different information or graphics? If so, where, and in what format?
- Are the examples correct? Do you need more examples?

If you find any errors or have any other suggestions for improvement, then please tell us your name, the name of the company who has licensed our products, the title and part number of the documentation and the chapter, section, and page number (if available).



## Note:

Before sending us your comments, you might like to check that you have the latest version of the document and if any concerns are already addressed. To do this, access the new Applications Release Online Documentation CD available on My Oracle Support and [www.oracle.com](http://www.oracle.com). It contains the most current Documentation Library plus all documents revised or released recently.

Send your comments to us using the electronic mail address: [retail-doc\\_us@oracle.com](mailto:retail-doc_us@oracle.com)

Please give your name, address, electronic mail address, and telephone number (optional).

If you need assistance with Oracle software, then please contact your support representative or Oracle Support Services.

If you require training or instruction in using Oracle software, then please contact your Oracle local office and inquire about our Oracle University offerings. A list of Oracle offices is available on our Web site at [www.oracle.com](http://www.oracle.com).

# Preface

The *Oracle Retail Integration Bus Java Messaging Service Console Guide* provides detailed information that is important when implementing RIB.

## Audience

This guide is intended for the Oracle Retail Integration Bus application integrators and implementation staff, as well as the retailer's IT personnel.

## Documentation Accessibility

For information about Oracle's commitment to accessibility, visit the Oracle Accessibility Program website at <http://www.oracle.com/pls/topic/lookup?ctx=acc&id=docacc>.

### Access to Oracle Support

Oracle customers that have purchased support have access to electronic support through My Oracle Support. For information, visit <http://www.oracle.com/pls/topic/lookup?ctx=acc&id=info> or visit <http://www.oracle.com/pls/topic/lookup?ctx=acc&id=trs> if you are hearing impaired.

## Customer Support

To contact Oracle Customer Support, access My Oracle Support at the following URL:

<https://support.oracle.com>

When contacting Customer Support, please provide the following:

- Product version and program/module name
- Functional and technical description of the problem (include business impact)
- Detailed step-by-step instructions to re-create
- Exact error message received
- Screen shots of each step you take

## Improved Process for Oracle Retail Documentation Corrections

To more quickly address critical corrections to Oracle Retail documentation content, Oracle Retail documentation may be republished whenever a critical correction is

needed. For critical corrections, the republication of an Oracle Retail document may at times not be attached to a numbered software release; instead, the Oracle Retail document will simply be replaced on the Oracle Technology Network Web site, or, in the case of Data Models, to the applicable My Oracle Support Documentation container where they reside.

This process will prevent delays in making critical corrections available to customers. For the customer, it means that before you begin installation, you must verify that you have the most recent version of the Oracle Retail documentation set. Oracle Retail documentation is available on the Oracle Technology Network at the following URL:

<http://www.oracle.com/technetwork/documentation/oracle-retail-100266.html>

An updated version of the applicable Oracle Retail document is indicated by Oracle part number, as well as print date (month and year). An updated version uses the same part number, with a higher-numbered suffix. For example, part number E123456-02 is an updated version of a document with part number E123456-01.

If a more recent version of a document is available, that version supersedes all previous versions.

## Oracle Retail Documentation on the Oracle Help Center (docs.oracle.com)

Oracle Retail product documentation is also available on the following Web site:

<https://docs.oracle.com/en/industries/retail/index.html>

(Data Model documents can be obtained through My Oracle Support.)

## Conventions

The following text conventions are used in this document:

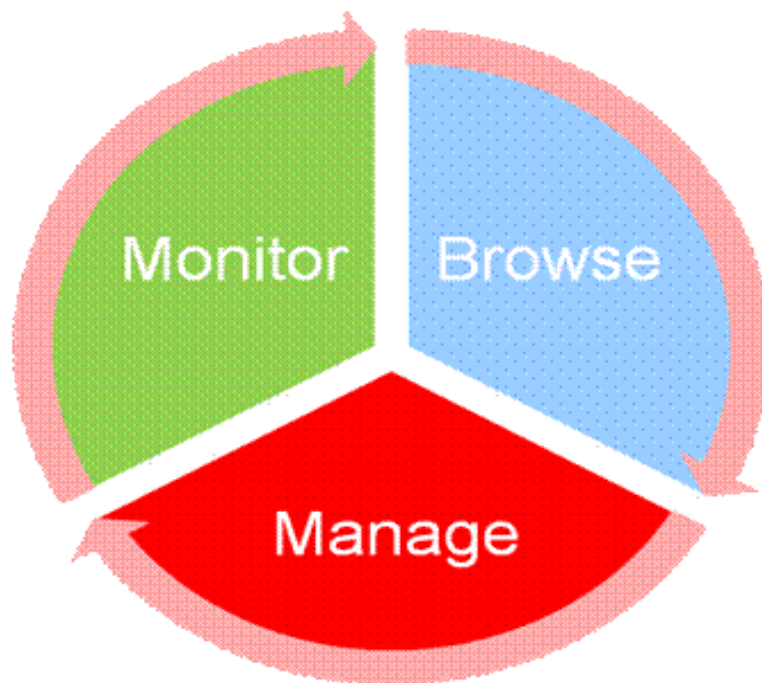
Convention	Meaning
<b>boldface</b>	Boldface type indicates graphical user interface elements associated with an action, or terms defined in text or the glossary.
<i>italic</i>	Italic type indicates book titles, emphasis, or placeholder variables for which you supply particular values.
monospace	Monospace type indicates commands within a paragraph, URLs, code in examples, text that appears on the screen, or text that you enter.

# 1

## Introduction

The Oracle Retail Java Messaging Service (JMS) Console is a Web application for monitoring, browsing, and managing the messages that flow through a JMS system. This application is designed for the Oracle Streams Advanced Queuing (AQ) JMS provider.

### 360<sup>1</sup>/<sub>2</sub> View of AQ JMS



- **Monitor** - provide an unattended view of JMS server.
- **Browse** - discover and drill down into the various aspects of JMS server.
- **Manage** - operate JMS server functionality.

JMS Console is intended for JMS administrators who want to monitor the health of the application and troubleshoot issues related to JMS system. Administrators can monitor the overall health of the system, browse and manage messages of a specific topic/subscriber as well as publish messages for a specific topic.

JMS Console is a very useful application to monitor and manage the AQ JMS regularly. It can troubleshoot critical issues related to any message blockages on the AQ JMS system as well as the Retail Integration Bus (RIB) messaging system which uses AQ as JMS provider.

Install JMS Console application only after the core RIB components have been installed and verified. Oracle recommends that you use JMS Console to monitor, manage, and troubleshoot the RIB AQ system.



## Need for a JMS Administration Application

Currently, there are no lightweight JMS administration tools available for the Oracle AQ. Generic JMS tools offer limited functionalities for the AQ JMS. JMS Console intends to fill this gap. Following are some key problem statements that JMS Console is expected to solve:

- JMS servers do not provide visibility into their internal working and state.
- Messages from JMS servers are not visible to the RIB system administrators until business is adversely impacted.
- Third party systems are not able to publish messages to JMS, and in turn are not visible to the RIB, until it is too late.
- Errors in JMS topics are not identified easily.
- You cannot view incorrect messages that exist inside JMS servers.
- Missing current or historical metrics data in messages.
- Expose valuable business data from inside JMS server as services.

## Concepts

Following are JMS concepts:

- Oracle Streams AQ JMS
- RIB on AQ JMS

## Oracle Streams AQ JMS

Oracle Streams Advanced Queuing (AQ) provides database-integrated message queuing functionality. It is built on Oracle Streams and leverages the functions of the Oracle database so that messages can be stored persistently, propagated between queues on different computers and databases, and transmitted using Oracle Net Services and HTTP(s).

Because Oracle Streams Advanced Queuing is implemented in database tables, all operational benefits of high availability, scalability, and reliability are also applicable to queue data. Standard database features such as recovery, restart, and security are supported by Oracle Streams AQ.

Oracle Streams AQ provides the PL/SQL APIs to interact with the native AQ server inside the Oracle database. The native AQ stream is not the same as the AQ behaving as a JMS server.



### Note:

For more information, see the *Oracle® Database Administrator Guide* and the *Oracle® Streams Advance Queuing User Guide*.

## Accessibility

Accessibility involves making your application usable for differently abled persons such as low vision or blindness, deafness, or other physical limitations. This means creating applications that can be used without a mouse (keyboard only), used with a screen reader for blind or low-vision users, and used without reliance on sound, color, or animation and timing.

JMS Console provides the ability to support the above accessibility in the applications.

Users should be able to navigate to all parts and functions of the application using the Tab and arrow keys, without using any keyboard shortcuts. In addition to that, keyboard shortcuts merely provide an additional way to access a function quickly.

Keyboard shortcuts provide an alternative to pointing devices for navigating the page. There are five types of keyboard shortcuts that can be provided in ADF Faces applications:

- Tab traversal, using Tab and Shift+Tab keys: Moves the focus through UI elements on a screen.
- Accelerator keys (hot keys): bypasses menu and page navigation, and performs an action directly, for example, Ctrl+C for Copy.
- Access keys: Moves the focus to a specific UI element, for example, Alt+F for the File menu.
- Default cursor/focus placement: Puts the initial focus on a component so that keyboard users can start interacting with the page without excessive navigation.
- Enter key: Triggers an action when the cursor is in certain fields or when the focus is on a link or button.

# 2

## Navigation and Help

This chapter describes the navigation and steps to use JMS Console application.

### Introducing the User Interface

JMS Console is a lightweight Web application based on ADF and presents information it sources from AQ JMS in a user friendly manner. The **Live Monitor** tab describes all JMS activity in real time, thereby giving you a summary of the overall health of JMS system in one view. The **Browse** tab allows you to browse topics and is a view-only feature. The **Manage** tab gives you access to the administrator management tools that are critical for troubleshooting.

### Log in to JMS Console

To log in to the JMS Console, take the following steps:

1. Enter the application URL `http://<host>:<port>/jms-console` in the address bar of the browser.

 **Note:**

Oracle recommends that you use the Mozilla Firefox Web browser to access the URL.

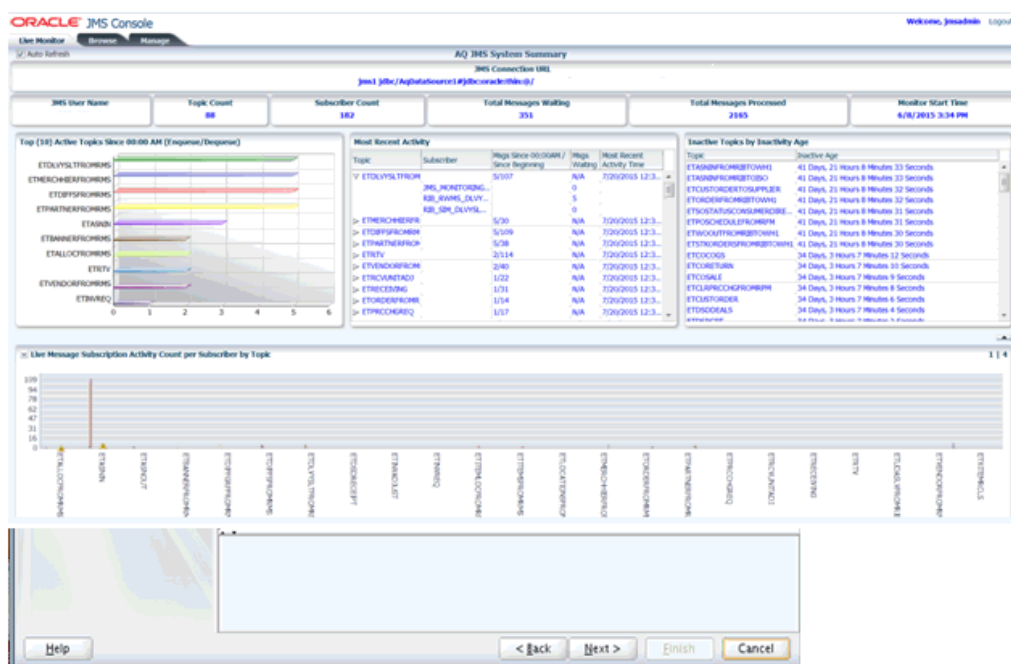


2. In the **Username** field, enter the user name you provided during the installation of the application.
3. In the **Password** field, enter the password.

4. Select the JMS server from the drop down list to work with a specific JMS server. By default, **jms1** is selected. The drop down list provides flexibility to switch between JMS servers when multiple AQ JMS's are configured for a single installation.
5. Click **Login**. The application home page displays.

## Live Monitor

The **Live Monitor** tab is the landing page of JMS Console. It provides an unattended high level view of the AQ JMS server. The dashboard displays the activity on the AQ JMS in question in real time. The dashboard automatically refreshes its content and pulls the latest data from the server every ten seconds.



The Live Monitor tab displays the data collected at different levels and visually groups related data into graphs and tables. There are three main groups as follows:

1. **Server Level Metrics** - The top panel displays a few key metrics for the configured JMS and provides a short summary of them.
  - a. **JMS Connection URL** - Provides the full JDBC URL for AQ data source, where **jms1** stands for JMS Server 1.
  - b. **JMS User Name** - Provides the database user name for the configured AQ.
  - c. **Topic Count** - Denotes the total number of Topics present on the configured AQ.
  - d. **Subscriber Count** - Denotes the total number of subscribers found on the configured AQ.
  - e. **Total Messages Waiting** - Denotes the total number of messages waiting on the configured AQ since the JMS Console was installed.

- f. Total Messages Processed - Denotes the total number of messages processed on the configured AQ since the JMS Console was installed.
  - g. Monitor Start Time - Denotes the time passed since monitoring started, that is since the time the JMS Console was installed.
2. **Topic/Subscriber Level Metrics** - This panel displays the current activity and inactivity details for the AQ JMS system.
- a. Top (10) Active Topics Since 00:00 AM (En-queue/De-queue) - This graph lists the Top Active Topic names and the volume of messages en-queued and de-queued since midnight (00 AM). The data is sorted by volume so that the topics with the highest volume appear first in the bar graph.  
  
Usage Tip - Use this graph to know the list of Topics that have processed most volume since midnight.
  - b. Most Recent Activity - This is a tree table that lists all the Topics on the AQ system with the subscribers for each topic. For each topic, the Total Messages processed are listed at two different time intervals, one since midnight and second one since the JMS Console was installed. Values are delimited by a '/'. For each subscriber, the Total Messages Waiting is listed. This table is significant because it displays the current activity on JMS system by indicating the most recent activity at the top of the table. In other words, this table is sorted by Most Recent Activity Time.  
  
Usage Tip - Use this table to review the most recent activities in JMS system.
  - c. Inactive Topics by Inactivity Age - This table reports all Topics based on how long the Topic has been 'inactive'. In other words, Topics with no message traffic since the monitoring started. This table is sorted by the Inactivity age and displays the most inactive Topic first. In custom installations, there are chances that certain topic(s) is intentionally not being used. In such cases, you can configure the topic(s) to not be shown in this table. For more information, see the Edit Properties under Manage JMS.  
  
Usage Tip - This report would be useful while troubleshooting potential problems when messages are being en-queued to a Topic, This will help isolating the integration problems, specifically when the publishing application is not even hitting JMS Topic.

 **Note:**

The timezone is not taken into account when calculating Inactive Time. For example, if the database is in a timezone one hour ahead of the application server, any activity in the AQ will immediately be recorded in JMS console as 1 hour ago.

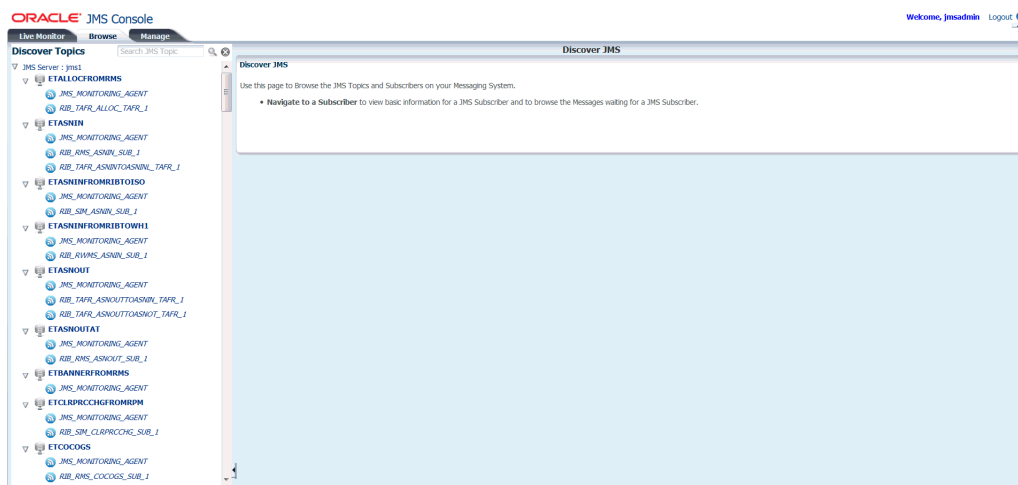
3. **Live Message Subscription Activity Count per Subscriber by Topic** - This graph reports the live message activity on the AQ JMS grouped by Topics and subscribers. This graph is presented in four quadrants stacked as four panels. The number of panels is based on the number of Topics available on JMS. The graph mainly presents the key metrics for each Topic, Total Messages processed, and the Messages Waiting on a Topic for a specific subscriber. The graph also serves as an alert notification monitor. When the threshold for Max Messages Waiting on Topic set for Messages waiting is breached, a warning sign appears on the Topic that has reached the set threshold. This indicates that the messages are blocked and that the administrator needs to take action to normalize the condition.

 **Note:**

The Live Monitor window automatically refreshes every ten seconds but the backend services are designed to collect data from JMS on a longer interval for performance reasons. Hence, all the reports (including graphs) in the Live Monitor window may experience a slight delay (~1 minute) in loading the latest data. For more information, see [Edit Properties](#).

## Browse JMS

The **Browse** tab provides browsing capabilities and allows you to discover and drill into the key components of AQ JMS namely Topics, Subscribers, and the Messages. By clicking on a Topic listed in the navigation menu, you can see all the subscribers registered with the Topic. When you click on the Subscriber, you can view the message count and the message content.



1. **Discover Topics Navigation Menu** - The navigation system lists all the Topics found on the AQ JMS. It allows you to review (view-only access) the Topics and explore the AQ JMS without altering the state of JMS. The menu system lets you drill into the Topics and the Subscribers by clicking on them.

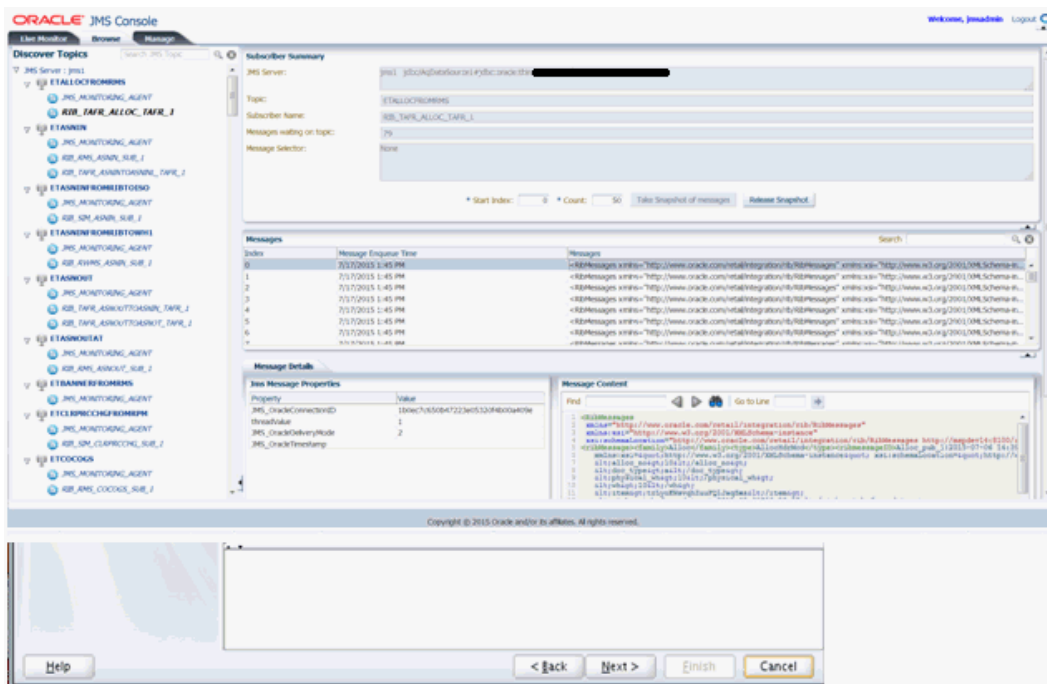
The Navigation menu uses icons to visually differentiate Topics. For example:



A Subscribers example is as follows:



2. **JMS\_MONITORING\_AGENT** - This is a special light weight subscriber created by JMS Console during application installation. It is designed to collect data from the AQ and provides statistics to JMS Console.



To browse a specific Topic/Subscriber, click the Subscriber listed on the Navigation menu. This displays the Subscriber Summary panel on the right hand side pane. The Subscriber Summary panel provides information on the selected subscriber and contains the **Take Snapshot of messages** button.



3. **JMS Server** - The complete connection URL for JMS Server.
  - a. **Topic** - The name of the Topic the selected subscriber is listening to.
  - b. **Subscriber Name** - The name of the selected subscriber.
  - c. **Message Waiting on Topic** - The number of messages waiting for the selected subscriber.
  - d. **Message Selector** - A messaging application can filter the messages it receives using a message selector. The message subscriber then receives only messages whose headers and properties match the selector. This field displays the Message Selector for the selected subscriber.

- e. **Take Snapshot of the messages** - In a healthy messaging system, messages are typically en-queued/de-queued continuously and removed from the Topic as soon as the de-queue transaction is committed. In such a situation, viewing a live message is practically impossible. The Take Snapshot tool resolves this issue. This tool lets you get a snapshot of a specific message you want to analyze even after the message has been consumed by the subscribing application. The messages in the snapshot are stored in memory thereby giving you access to view or analyze the message payload.

The tool requires two inputs as follows:

**Start Index** - It specifies the starting point of the snapshot.

**Count** - It specifies the number of messages to be included in the snapshot.

- f. **Messages** - Once the snapshot of the messages is available, the messages are listed in the Messages panel. Each record in the table corresponds to a message in the snapshot. The index in the table refers to the indexing of the list of messages starting with 0. Message columns display the first few characters of the actual message and are intended to serve as a clue. You can identify the message you want to review in detail and click on the row to view it.
- g. **Message Details** - When a row in the Messages panel is selected, details are loaded in the Message Details panel. This describes JMS Header properties associated with the message and the actual message contents.

The screenshot displays the Oracle JMS console interface. At the top, there is a 'Messages' panel with a table listing several messages. Below this, the 'Message Details' panel is shown, which is divided into two sections: 'Jms Message Properties' and 'Message Content'.

Index	Message Enqueetime	Messages
9	6/28/2014 3:35 PM	rib
10	6/28/2014 6:59 AM	<rm:RibMessages xmlns:rm="http://www.oracle.com/retail/integration/rib/RibMessag...
11	6/28/2014 6:59 AM	<rm:RibMessages xmlns:rm="http://www.oracle.com/retail/integration/rib/RibMessag...
12	6/28/2014 6:59 AM	<rm:RibMessages xmlns:rm="http://www.oracle.com/retail/integration/rib/RibMessag...
13	6/28/2014 6:59 AM	<rm:RibMessages xmlns:rm="http://www.oracle.com/retail/integration/rib/RibMessag...
14	6/28/2014 6:59 AM	<rm:RibMessages xmlns:rm="http://www.oracle.com/retail/integration/rib/RibMessag...
15	6/28/2014 6:59 AM	<rm:RibMessages xmlns:rm="http://www.oracle.com/retail/integration/rib/RibMessag...
16	6/28/2014 7:04 AM	<rm:RibMessages xmlns:rm="http://www.oracle.com/retail/integration/rib/RibMessag...

Property	Value
JMS_OracleConnectionID	fcc463fe9ed875c2e04310358d0ae32f
threadValue	1
JMS_OracleDeliveryMode	2
JMS_OracleTimestamp	

```

<rm:RibMessages
xmlns:rm="http://www.oracle.com/retail/integration/
rib/RibMessages"
xmlns:xsi="http://www.w3.org/2001/XMLSchema-
instance"
xsi:schemaLocation="1
m:7779/rib-func-
artifact/integration/xsd/RibMessages.xsd">
<rm:ribMessage>
<rm:family>ASNIn</rm:family>
<rm:type>ASNInCre</rm:type>
<rm:id>4</rm:id>
<rm:ribmessageID>PublishingWebService:2014-
06-28 11:59:53.544 UTC</rm:ribmessageID>
<ns2:routingInfo
xmlns:ns2="http://www.oracle.com/retail/integration/
bus/gateway/services/RoutingInfos/v1">
<name>4</name>
<value>4</value>
<ns2:detail>
<ns2:dtt_name>4</ns2:dtt_name>
<ns2:dtt_value>4</ns2:dtt_value>
</ns2:detail>

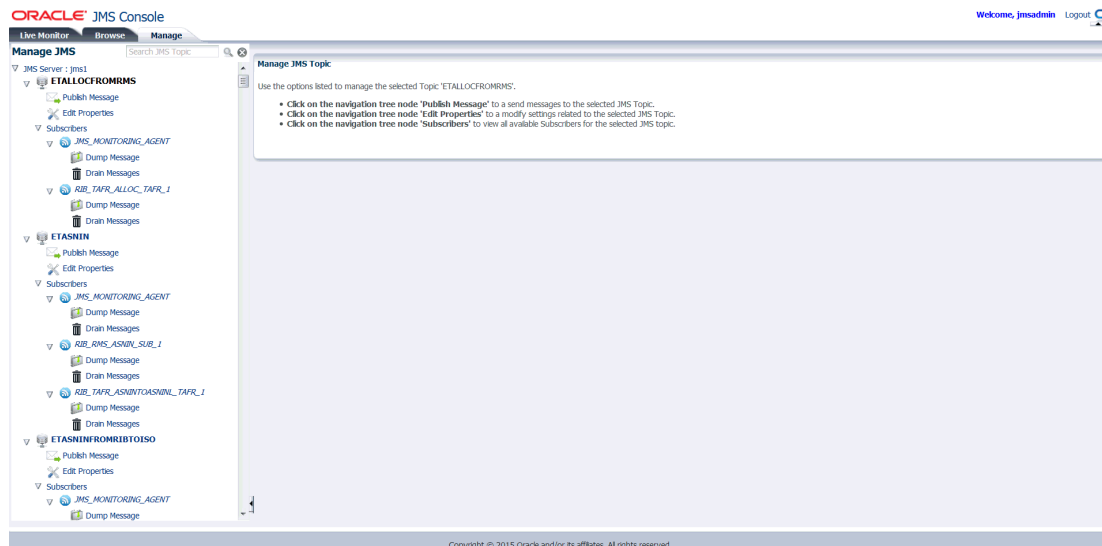
```

## Manage JMS

The **Manage** tab essentially bundles a few key tools that are required for managing a JMS server. Oracle recommends that only an administrator, who knows JMS system in depth and is aware of the potential outcome of the action performed by this toolset, be allowed to use the features provided in this tab. This window allows you to interact with

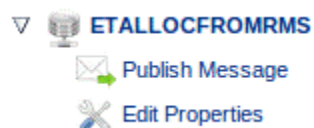


JMS server using core messaging system features like publishing a message to a Topic and dumping and draining messages from a subscriber.



1. **Manage JMS Navigation Menu** - The navigation system in the **Manage** tab provides accessibility to information via two kinds of nodes; the Data Nodes and the Action Nodes. Topics and the Subscriber nodes are referred to as the Data Nodes since they have no action associated with them directly. Action nodes provide links that leads to any action. The Topic and Subscriber nodes have a separate set of relevant action nodes.

The Action nodes available for a Topic are Publish Message and Edit Properties.



The Action nodes available for a Subscriber are Dump Message and Drain Messages.



## Publishing Messages to a JMS Topic

To publish messages to a JMS Topic, take the following steps:

1. In the **Manage** tab, select JMS Topic.
2. Click **Publish Message**. The Publish Message window for the Topic displays.

3. Enter the following:
  - a. **Choose a JMS Header Name** - Add a JMS Header property name if one is not already available. Once added, the header name is available to all the users using the application. The header names are not persisted and are lost when the server is restarted.
  - b. **JMS Header Properties** - Add JMS Header property name and value.
  - c. **Import RibMessage Xml from Local Disk** - Select the file from the local file system.
  - d. **Enter RibMessage Xml Here** - Enter the complete XML message payload.
4. Click **Publish**.

Help has been added to the screen to showcase a sample RibMessage pattern that needs to be used for publishing with **Enter RibMessage Xml**.

**RibMessage**

Sample Rib Message

Note : Browse the topic using Browse tab and take a snapshot to get the sample message content for any topic.  
It is important to note that <messageData> content is html encoded.  
Below is a sample InvAdjust message that can be published.

```
<RibMessages
  xmlns="http://www.oracle.com/retail/integration/rb/RibMessages"
  xmlns:xsi="http://www.w3.org/2001/XMLSchema-instance"
  xsi:schemaLocation="http://www.oracle.com/retail/integration/rb/RibMessages http://example.com:8100
  /rb-func:artifact/integration/xsd/RibMessages.xsd" >
  <publishetname>etInvAdjust</publishetname>
  <ribMessage>
  <family>InvAdjust</family>
  <type>InvAdjustCre</type>
  <ribMessageID>2020-09-16 05:56:17.272 EDT </ribMessageID>
  <publishTime>2020-09-16 05:56:17.285 EDT </publishTime>
  <messageData>&lt;?xml version="1.0" encoding="UTF-8" standalone="no" &gt;
  &lt;InvAdjustDesc xmlns="http://www.oracle.com/retail/integration/base/bo/InvAdjustDesc/v1" &gt;
  &lt;xsi:schemaLocation="http://www.w3.org/2001/XMLSchema-instance&quot; xsi:schemaLocation="&quot;http://www.oracle.com/retail/integration/base/bo/InvAdjustDesc/v1 http://www.oracle.com/retail
```

### Note:

A message that is published to a JMS system is consumed by the registered subscriber and may eventually flow to the downstream applications. Once initiated, this process cannot be undone.

Message family is a case-sensitive field and needs to be entered consistently while testing. Variations in message family capitalization will result in inconsistencies in RIC.

## Edit Properties

JMS Console application has a preference configuration that defines application level preferences. Based on the set preferences and business need, the application behavior can change. These preferences are persisted and are available even after a server bounce.

The following two preference settings are available:

1. **Threshold for Max Messages Waiting on Topic** - It is the maximum number of messages waiting on a Topic after which a notification is generated. The notification can be a graphical alert on the Live Monitor graph or an Email Notification that is enabled. By default, this preference is set to a 100 messages. Once the threshold is met, alerts are fired.
2. **Ignore This Topic For Inactivity Calculation** - When set to false, this property ignores the selected Topic for inactivity calculation. In other words, if this flag is set to **Yes**, the selected Topic is not treated as inactive. The Topic will not be listed in the Live Monitor's *Inactive Topics by Inactivity Age* report even if no traffic exists. By default, this flag is set to **No** and the Topic is treated as inactive in the event when there is no message traffic.

To edit properties for a JMS Topic, take the following steps:

1. In the **Manage** tab, select JMS Topic.
2. Click **Edit Properties**. The Properties window for the Topic displays.
  - a. **Threshold for Max Messages Waiting on Topic** - Provides the threshold for the selected Topic.
  - b. **Ignore This Topic For Inactivity Calculation** - Select from a Yes/No preference.

Properties for Topic ETALLOCFROMRMS

Use this page to configure following properties for the selected topic.

- **Threshold for Max Messages Waiting on Topic:** It is the maximum number of messages waiting on a topic after which notification should be generated.
- **Ignore This Topic For Inactivity Calculation:** When set to false this property will ignore the selected topic for inactivity calculation.

Selected Topic: ETALLOCFROMRMS

Threshold for Max Messages Waiting on Topic: 1

Ignore This Topic For Inactivity Calculation:  Yes  No

[Save Changes](#)

3. Click **Save Changes**.

## Enabling Email Notification Alerts

Use the configure tab in JMS console UI to configure the mailing list for JMS notifications.

**ORACLE** JMS Console

Live Monitor Browse Manage **Configure**

Property Name	Property Value
Repave Lead Notification Delay(in minutes)	<input type="text" value="30"/>
Email Notification To List	<input type="text" value="receiver_mail@example.com"/>

**Note:**

For more information on setting up the mailing list refer to the [Configure](#) tab details.

## Resetting Preferences to Default Factory Settings

To reset the set preferences across all the Topics to default setting, take the following steps:

1. Go to WebLogic domain home and locate and delete jms-console hidden folder.  

```
cd $MW_HOME/user_projects/JMS_CONSOLE_DOMAIN/rm -rf .jms-console
```
2. Restart the server hosting the application.

## Dump Message

A JMS administrator or a business user can use this feature to analyze payload data or the message content. This feature lets you dump, or download, the messages to the file system. While troubleshooting messaging or integration problems where messages are stuck on a Topic, you can dump messages to file system and replay them at a later date. You need expertise to execute this process. Make sure you consider message sequencing while replaying the messages.

To dump/download messages to a file system for a Subscriber, take the following steps:

1. In the **Manage** tab, select the Subscriber.
2. Click **Dump Message**. The Dump Messages window for the Subscriber displays.
  - a. **Starting Index** - Specify the index to begin dumping the messages.

- b. **Number of Messages to Dump** - Specify the number of messages to dump.
3. Click **Dump Messages**. After a successful message dump, the location to the messages is displayed. The messages are downloaded from the AQ JMS server to the WebLogic server and not the client/local computer for security reasons.

 **Note:**

Dumping messages can be an expensive operation depending on the number of messages being dumped. It may have an impact on the Messaging application.

## Drain Messages

Use this feature to delete messages from JMS Topics permanently. An Administrator can use the Drain Messages feature to delete messages while troubleshooting messaging / integration problems where messages are stuck on a Topic. Use this feature only after analyzing the message using the Dump Message feature.

To drain messages for a Subscriber, take the following steps:

1. In the **Manage** tab, select the Subscriber.
2. Click **Drain Messages**. The Drain Messages window for the Subscriber displays.
  - a. **Number of Messages to Drain** - Specify the number of messages to drain.

3. Click **Drain Messages**.

 **Note:**

Incorporate due diligence while using the Drain Messages feature since it deletes the messages permanently from JMS system. This process cannot be undone.

## Configure

Use this feature to configure JMS console properties, like Email Notification List and Repave lead Notification Delay.

ORACLE JMS Console

Live Monitor Browse Manage **Configure**

Property Name	Property Value
Repave Lead Notification Delay(n minutes)	30
Email Notification To List	user@oracle.com

Save Changes

Saved JMS console Properties Successfully

Use this feature to disable all the email notifications from the JMS console application. By default, the notifications are turned off. The user must turn on the notifications by setting **Enable Global Email Notifications** to **Yes**.

ORACLE JMS Console

Live Monitor Browse Manage **Configure**

Property Name	Property Value
Repave Lead Notification Delay(n minutes)	30
Email Notification To List	example@oracle.com
Enable Global Email Notification	<input type="radio"/> Yes <input checked="" type="radio"/> No

Save Changes

## User Interface Authorization

JMS Console UI Tab	Functionality	Roles Allowed
Browse Topics	TakeSnapShot Of existing messages	RicsAdmin, RicsOperator, RicsMonitor
Manage topics	List all Topics	RicsAdmin, RicsOperator, RicsMonitor
WebService (JMSSMonitorService)	getJmsSystemState	RicsAdmin, RicsOperator, RicsMonitor
	Publish Message	RicsAdmin, RicsOperator
	Edit JMS Properties	RicsAdmin Only
	Dump MessageOnSubscribers	RicsAdmin, RicsOperator

<b>JMS Console UI Tab</b>	<b>Functionality</b>	<b>Roles Allowed</b>
	Drain Message	RicsAdmin Only
	Search for Topic	RicsAdmin, RicsOperator, RicsMonitor

# Glossary

## **Family**

The valid message family to which the message belongs. Each message family contains information specific to a related set of operations on a business entity or related business entities.

## **Message Type**

Each message family contains a set of sub-formats specific to the business event triggering message publication. The term message type embodies this specific sub-format. For example, a Purchase Order message family can contain message types such as Create PO Header, Create PO Detail, Update PO Header, or Delete PO Detail.

## **Thread Value**

The thread value is used for parallel processing of messages within the same family. This value is added to the message during publication to JMS so that it can be routed through a specific adapter and/or process.

## **Alert**

A system generated event that occurs when the set threshold is met.

## **Snapshot of Messages**

The current state of the messages stored in-memory to enable users to browse through the message content even if messages are consumed by the subscribers.

## **JMS Header Properties**

A set of properties (name-value pairs) that can be set as part of JMS Message XML Headers. For example, the header properties used in a RIB System like threadValue, appName, retryLocation, and so on.