

# Oracle® Retail Supplier Evaluation Cloud Service Release Readiness Guide



Release 24.1.301.0

F98264-01

July 2024

The Oracle logo, consisting of a solid red square with the word "ORACLE" in white, uppercase, sans-serif font centered within it.

ORACLE®

Copyright © 2024, Oracle and/or its affiliates.

This software and related documentation are provided under a license agreement containing restrictions on use and disclosure and are protected by intellectual property laws. Except as expressly permitted in your license agreement or allowed by law, you may not use, copy, reproduce, translate, broadcast, modify, license, transmit, distribute, exhibit, perform, publish, or display any part, in any form, or by any means. Reverse engineering, disassembly, or decompilation of this software, unless required by law for interoperability, is prohibited.

The information contained herein is subject to change without notice and is not warranted to be error-free. If you find any errors, please report them to us in writing.

If this is software, software documentation, data (as defined in the Federal Acquisition Regulation), or related documentation that is delivered to the U.S. Government or anyone licensing it on behalf of the U.S. Government, then the following notice is applicable:

U.S. GOVERNMENT END USERS: Oracle programs (including any operating system, integrated software, any programs embedded, installed, or activated on delivered hardware, and modifications of such programs) and Oracle computer documentation or other Oracle data delivered to or accessed by U.S. Government end users are "commercial computer software," "commercial computer software documentation," or "limited rights data" pursuant to the applicable Federal Acquisition Regulation and agency-specific supplemental regulations. As such, the use, reproduction, duplication, release, display, disclosure, modification, preparation of derivative works, and/or adaptation of i) Oracle programs (including any operating system, integrated software, any programs embedded, installed, or activated on delivered hardware, and modifications of such programs), ii) Oracle computer documentation and/or iii) other Oracle data, is subject to the rights and limitations specified in the license contained in the applicable contract. The terms governing the U.S. Government's use of Oracle cloud services are defined by the applicable contract for such services. No other rights are granted to the U.S. Government.

This software or hardware is developed for general use in a variety of information management applications. It is not developed or intended for use in any inherently dangerous applications, including applications that may create a risk of personal injury. If you use this software or hardware in dangerous applications, then you shall be responsible to take all appropriate fail-safe, backup, redundancy, and other measures to ensure its safe use. Oracle Corporation and its affiliates disclaim any liability for any damages caused by use of this software or hardware in dangerous applications.

Oracle®, Java, MySQL, and NetSuite are registered trademarks of Oracle and/or its affiliates. Other names may be trademarks of their respective owners.

Intel and Intel Inside are trademarks or registered trademarks of Intel Corporation. All SPARC trademarks are used under license and are trademarks or registered trademarks of SPARC International, Inc. AMD, Epyc, and the AMD logo are trademarks or registered trademarks of Advanced Micro Devices. UNIX is a registered trademark of The Open Group.

This software or hardware and documentation may provide access to or information about content, products, and services from third parties. Oracle Corporation and its affiliates are not responsible for and expressly disclaim all warranties of any kind with respect to third-party content, products, and services unless otherwise set forth in an applicable agreement between you and Oracle. Oracle Corporation and its affiliates will not be responsible for any loss, costs, or damages incurred due to your access to or use of third-party content, products, or services, except as set forth in an applicable agreement between you and Oracle.

# Contents

## 1 Feature Summary

---

Noteworthy Enhancements	1-1
Item Evaluation	1-2
Item Assessments	1-2
RFX Request, Review, and Compare	1-5
Third-Party LCA Integration	1-8
Assessment Enhancements	1-10
Delisting and Archiving Tools	1-12
Dashboard Updates	1-12
Post Release Tasks & Impact on Existing Installation	1-13
System Parameters	1-13
Reports	1-13
System Text	1-14
Permissions	1-14
Global Configuration	1-23
Database Update Scripts	1-23
Enabling Identity Management Notifications	1-24
Enabling User Roles	1-24

## 2 Browser Requirements

---

## 3 Noteworthy Resolved Issues

---

## 4 Deprecated Features

---

---

# Preface

This guide outlines the information you need to know about Oracle Retail Supplier Evaluation Cloud Service new or improved functionality in this update, and describes any tasks you might need to perform for the update. Each section includes a brief description of the feature, the steps you need to take to enable or begin using the feature, any tips or considerations that you should keep in mind, and the resources available to help you.

## **Audience**

This document is intended for the users and administrators of the Oracle Retail Supplier Evaluation Cloud Service.

## **Documentation Accessibility**

For information about Oracle's commitment to accessibility, visit the Oracle Accessibility Program website at <http://www.oracle.com/pls/topic/lookup?ctx=acc&id=docacc>

## **Access to Oracle Support**

Oracle customers that have purchased support have access to electronic support through My Oracle Support. For information, visit <http://www.oracle.com/pls/topic/lookup?ctx=acc&id=info> or visit <http://www.oracle.com/pls/topic/lookup?ctx=acc&id=trs> if you are hearing impaired.

## **Customer Support**

To contact Oracle Customer Support, access My Oracle Support at the following URL:

<https://support.oracle.com>

When contacting Customer Support, please provide the following:

- Product version and program/module name
- Functional and technical description of the problem (include business impact)
- Detailed step-by-step instructions to re-create
- Exact error message received
- Screen shots of each step you take

## **Oracle Help Center (docs.oracle.com)**

Oracle Retail product documentation is available on the Oracle Help Center at <https://docs.oracle.com/en/industries/retail/index.html>.

(Data Model documents can be obtained through My Oracle Support.)

## **Comments and Suggestions**

Please give us feedback about Oracle Retail Help and Guides. You can send an e-mail to: [retail-doc\\_us@oracle.com](mailto:retail-doc_us@oracle.com)

## **Oracle Retail Cloud Services and Business Agility**

Oracle Retail Supplier Evaluation Cloud Service is hosted in the Oracle Cloud with the security features inherent to Oracle technology and a robust data center classification, providing significant uptime. The Oracle Cloud team is responsible for installing, monitoring, patching, and upgrading retail software.

---

Included in the service is continuous technical support, access to software feature enhancements, hardware upgrades, and disaster recovery. The Cloud Service model helps to free customer IT resources from the need to perform these tasks, giving retailers greater business agility to respond to changing technologies and to perform more value-added tasks focused on business processes and innovation.

Oracle Retail Software Cloud Service is acquired exclusively through a subscription service (SaaS) model. This shifts funding from a capital investment in software to an operational expense. Subscription-based pricing for retail applications offers flexibility and cost effectiveness.

# 1

## Feature Summary

This chapter describes the feature enhancements in this release.

### Noteworthy Enhancements

This guide outlines the information you need to know about new or improved functionality in the Oracle Retail Supplier Evaluation Cloud Service update and describes any tasks you might need to perform for the update. Each section includes a brief description of the feature, the steps you need to take to enable or begin using the feature, any tips or considerations that you should keep in mind, and the resources available to help you.



#### Note:

Where new fields, User Interface (UI) changes, or glossary entries are introduced as part of a change, the portal owner may need to apply their own translations of the core system text.

#### Column Definitions

- **Feature:** Provides a description of the feature being delivered.
- **Module Impacted:** Identifies the module impacted associated with the feature, if any.
- **Scale:** Identifies the size of the feature. Options are:
  - **Small:** These UI or process-based features are typically comprised of minor field, validation, or program changes. Therefore, the potential impact to users is minimal.
  - **Medium:** These UI or process-based features are typically comprised of field, validation, or program changes. Therefore, the potential impact to users is moderate.
  - **Large:** These UI or process-based features have more complex designs. Therefore, the potential impact to users is higher.
- **Delivered:** Is the new feature available for use immediately after upgrade or must the feature be enabled or configured? If no, the feature is non-disruptive to end users and action is required (detailed steps below) to make the feature ready to use.
- **Customer Action Required:** You must take action before these features can be used. These features are delivered disabled and you choose if and when to enable them.

Table 1-1 Noteworthy Enhancements

Feature	Module Impacted	Scale	Delivered	Customer Action Required?
<a href="#">Item Evaluation</a>	Supplier and Product	Large	Yes	Yes
<a href="#">Assessment Enhancements</a>	Supplier	Medium	Yes	Yes

**Table 1-1 (Cont.) Noteworthy Enhancements**

Feature	Module Impacted	Scale	Delivered	Customer Action Required?
<a href="#">Delisting and Archiving Tools</a>	Supplier and Product	Medium	Yes	Yes
<a href="#">Dashboard Updates</a>	Supplier	Small	Yes	No

## Item Evaluation

Supplier Evaluation is extended with a new module to support the evaluation of items/products. See the following sections for more information on the key features:

- [Item Assessments](#)
- [RFX Request, Review, and Compare](#)
- [Third-Party LCA Integration](#)

New system parameters are introduced for managing Product Records and to enable the Item Evaluation Scoring. Various new authority profiles and permissions, and a notification email are introduced. See Post Release Tasks.

## Item Assessments

**Item Assessments** based on the existing site-level assessments, enable the retailer to assess and score at the item level, and manage corrective actions:

- Score or grade items against compliance, brand values, sustainability, regulatory, and economic targets.
- Capture item specification attributes, details of regulative assessments, and certificates.
- The Product Record is introduced for the management of items:
  - Includes an Item Summary page summarizing the item's scores and contributing Assessments.
  - Product Records tab in the Supplier and Site records containing their items.
  - Product Records may be linked to Processes and Activities.
  - Item Assessments are linked to a Product Record or can be created independently, to be linked later.
- Supporting list views, info panels, data import/exports, Assignments, and email notifications.
- Supporting glossaries, system parameters, permissions, report queries, standard reports, APIs, and Retail Data Store (RDS) data.

New system parameters are introduced for managing Product Records and to enable the Item Evaluation Scoring. Various new authority profiles and permissions, and a notification email are introduced. See Post Release Tasks.

To facilitate the management of Item Assessments, the Product module is introduced to Supplier Evaluation. The **Product** menu in the Tasks navigator contains the options:

- Product Records - opens the area for viewing and maintaining Product Records.

- Item Assessments - opens the area for viewing and maintaining Item Assessments.

Within the **Admin** area, the following are available to support the Product module:

- Product glossaries and system parameters.
- Permissions (user roles, authority profiles, and permissions rules).
- System Text (within the Product category) and Email templates.
- Reports (Data Sources, Templates, Designs, Rich Text Formats (RTFs), and Queries).
- Global Changes (Change Product Responsibilities).
- Custom Fields and API Endpoints.

The **Dashboard** menu in the Tasks navigator contains options for Site Evaluation and Item Evaluation, opening the related charts and drill-down list views.

## Product Records

The introduction of the Product Record includes the following features:

- An item summary Scores page containing the item's evaluation scores and list of contributing Assessments.

The screenshot displays a web interface for a Product Record. At the top, there are navigation tabs: Product Record Details, Scores, Assessment, Linked Product Records, Specifications, Pack Copy Files, Process Links, Surveillance, Surveillance Test Reports, Custom Fields, Change History, and Attachments. The 'Scores' section shows an overall score of 5 (One Star) and an icon of five stars. Below this, a table lists evaluation scores for various categories:

Evaluation Type	Evaluation Value	Evaluation Score	Icon	Last Calculation Date	Scoring Rules Version
Ethical	-	-			-
Governance	-	-			-
Environmental	-	-			-
Sustainability	0	Score Not Achieved		11/06/24	1
Hazard & Risk	0	Score Not Achieved		11/06/24	2
Quality & Labelling	20	Satisfactory		11/06/24	1

Below the table, the 'Assessments' section shows a list of assessments:

Assessment Type	Completed Date	Score Value	Score	Evaluation Type
Nutrition Assessment	28/02/24	267	Green	Quality & Labelling

- An Assessments page containing a list of all the product's Item Assessments.
- Product Record tabs appear in the Supplier and Site records, listing any associated products.
- The ability to link Processes and their Activities to Product Records, and to reference Brand details.
- Product Record related Assignments are targeted at the relevant users.

## Item Assessment Features

The introduction of Item Assessments includes the following features:

- Item Assessments are based on the existing Assessments and are used to assess individual products.
- The existing Assessments become Site Assessments, specifically to assess sites.
- Assessment Templates (and Evaluation Types) have a flag to indicate if used by Item or Site Assessments.
- Item Assessments are created from the Product Record (or the new Assessment Request wizard).



- As with Site Assessments, Item Assessments can have Evaluation scores calculated, based on configurable scoring rules.
- Assessment questions can be set as being *Summary Attributes*, meaning that the responses to the questions can be displayed in the Info panel of the associated Assessment, Product Record, or Site.

Each summary attribute has a label to identify what information the attribute represents.

**Info Panel** Pasta Sauce, PS001

Score	Value
Five Star	62 *****

**Evaluation Scores**

Evaluation Type	Score	Value
Ethical	Five Star	62 *****
Environmental	Three Star	27 *****
Sustainability	Three Star	40 *****

**Attributes**

Assessment	Completion Date
▶ Ethical Assessment	21 Jul 2023
▼ Sustainability Assessment	21 Mar 2023

Label	Value
Data type question	23 Sept 2023
Number type question	2023
Picklist type question (multi)	Value 1, Value 2, Value 3
Picklist type question (single)	Value 3
Text type question	Text response
URL type question	URL response

**Completed Assessments**

Assessment Type	Evaluation Type	Score	Value
Ethical Assessment	Ethical	Good	42
Sustainability Assessment	Sustainability	Silver	70

Summary attributes can also be configured for use in Pack Copy files (for use in the Oracle Retail Brand Compliance application), or other integration purposes (for future use).

## Reporting

New standard reports become available for reporting on Product Records and Item Assessments:

- CR73 - Active Products Summary
- CR111 - Item Assessment Summary
- CR112 - Item Assessments Latest Completed Scores
- CR113 - Item Assessments Latest Completed Responses
- CR114 - Item Assessments All Responses
- CR115 - Item Evaluation Summary Scores

The following report queries also become available for use in building custom reports:

- Product (Product Records)

- Item Evaluation Summary (Item Evaluation scores for Product Records)
- Item Assessments (Item Assessments)
- Item Assessment Latest (Item Assessments, the latest of each type)
- Item Assessments All Responses (Item Assessments, with responses)

## RFX Request, Review, and Compare

RFX Request, Review, and Compare provides the ability to evaluate item performance by category and brand, with drill-down dashboards:

- Manage *request for* information questionnaires with:
  - Assessment Request wizard - a facility for creating multiple Assessments through a single action. The wizard guides the user through selecting the type of Assessments to be created and for which items and/or sites. The generated Assessments are grouped within folders.
  - Assessment Review scores - based on the collective scores of Assessments within a folder, overall folder scores can be calculated for comparison purposes.
  - Assessment Request & Compare view - a list view grouping Assessments within folders, showing review scores for comparing the results by supplier site.
- Item Evaluation Dashboard - various charts and drill-down views, similar in principle to the existing Supplier Evaluation dashboard. The underlying data is based on the Product Records, Item Assessments, and Item Evaluation Scores.
- Overall *entity* performance scoring of items and sites, shown within the Item Summary and Site Summary pages.

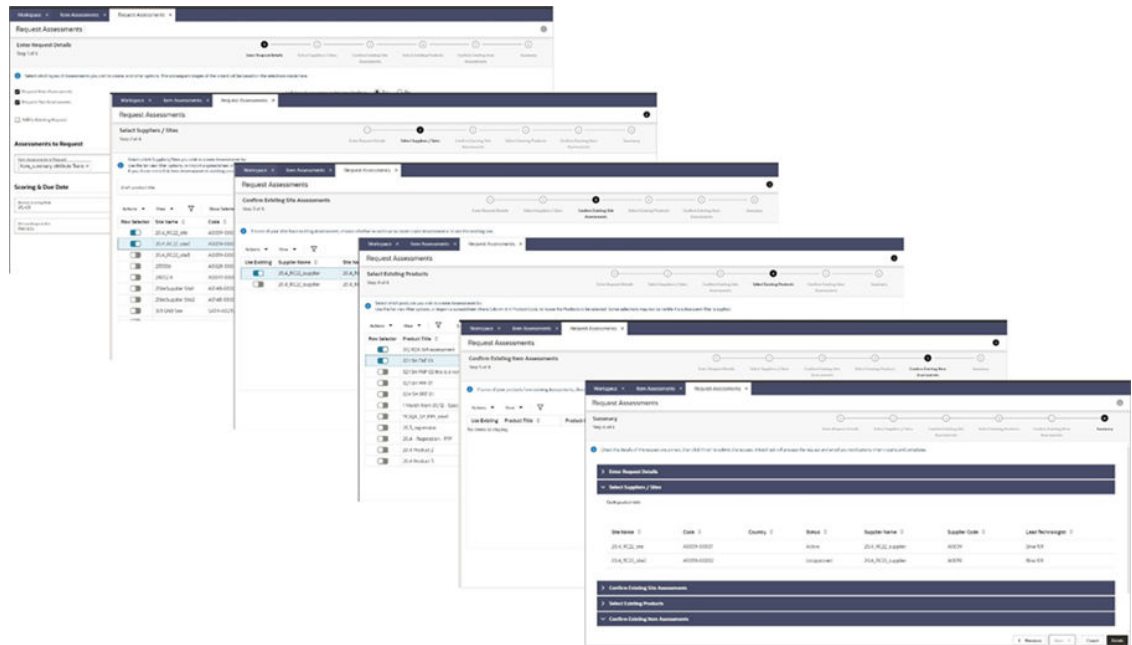
### Assessment Request Wizard

A new Request Assessments action is available in the Item and Site Assessments list views, to users with the necessary authority profile. The action launches the wizard to guide the user through the creation of multiple Site and/or Item Assessments.

According to the choices made, a series of dynamic steps are presented:

1. Enter Request Details - select the type of Assessments to be created and the reason for the request.
2. Select Suppliers / Sites - select Suppliers/Sites if Site Assessments are to be created.
3. Confirm Existing Site Assessments - lists any existing Site Assessments of the type being created for the Sites.
4. Select Products - select Products if Item Assessments are to be created.
5. Confirm Existing Item Assessments - lists any existing Item Assessments of the type being created for the Products.
6. Confirm Existing Item Assessments - lists any existing Item Assessments of the type being created for the Products.

Steps 2 and 4 include the option to upload a spreadsheet containing a list of the Suppliers/ Sites or Products to be selected.



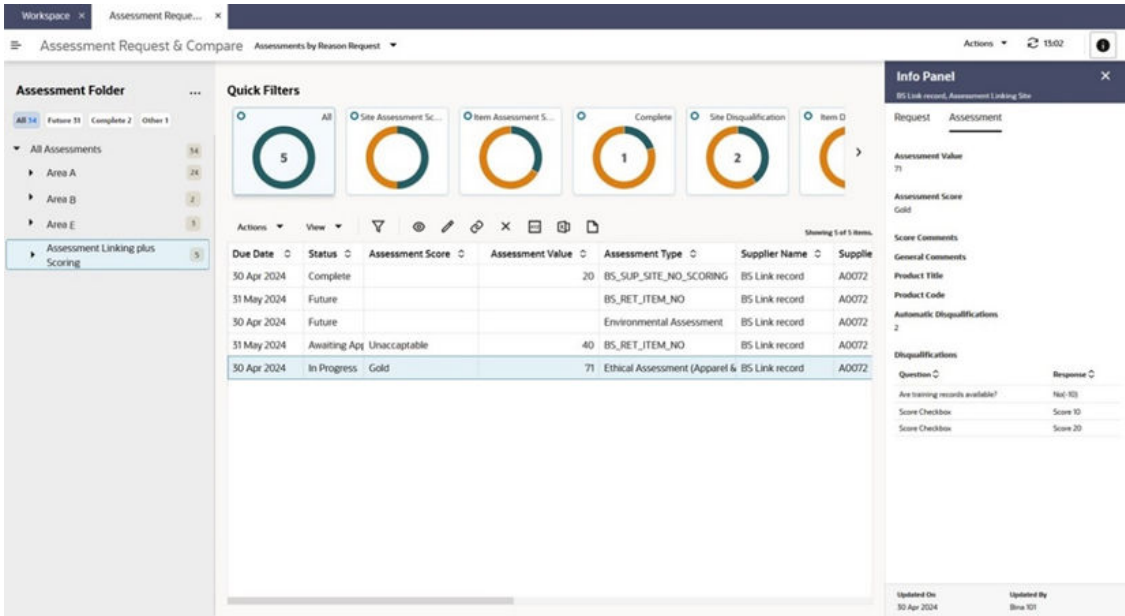
The Assessments are created by a new Assessment Request batch job.

### Review Scores and Request & Compare View

Assessments created using the wizard are grouped within folders: a top-level folder for the *reason for request* entered in Step 1, and individual sub folders for each of the supplier sites for which Assessments were created for the request reason.

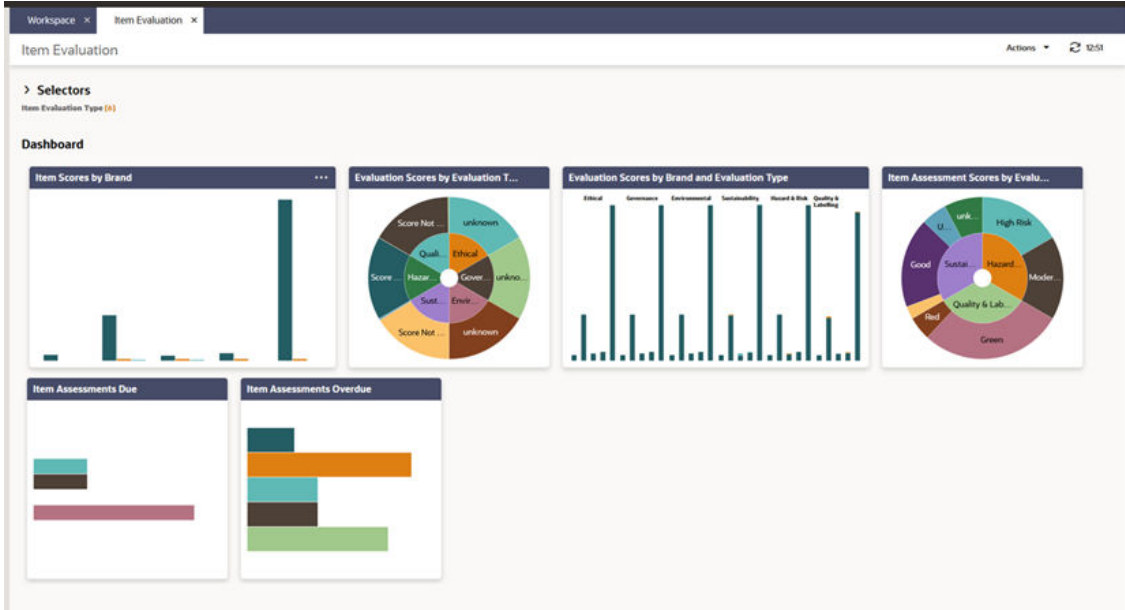
The supplier/site level sub folders can have **Review scores** automatically calculated based on the scores of Assessments within the folder, thus enabling cross-supplier comparison when assessing multiple suppliers for a specific reason. The Review score configuration and scoring mechanism is similar to that of Evaluation scores.

A new Assessment Request & Compare list view is available, showing the Item and Site Assessments that have been created using the wizard, grouped within the request reason and supplier/site folder hierarchy. The Review scores of the supplier/site level sub folders can be viewed within the list view Info panel.



**Item Evaluation Dashboard**

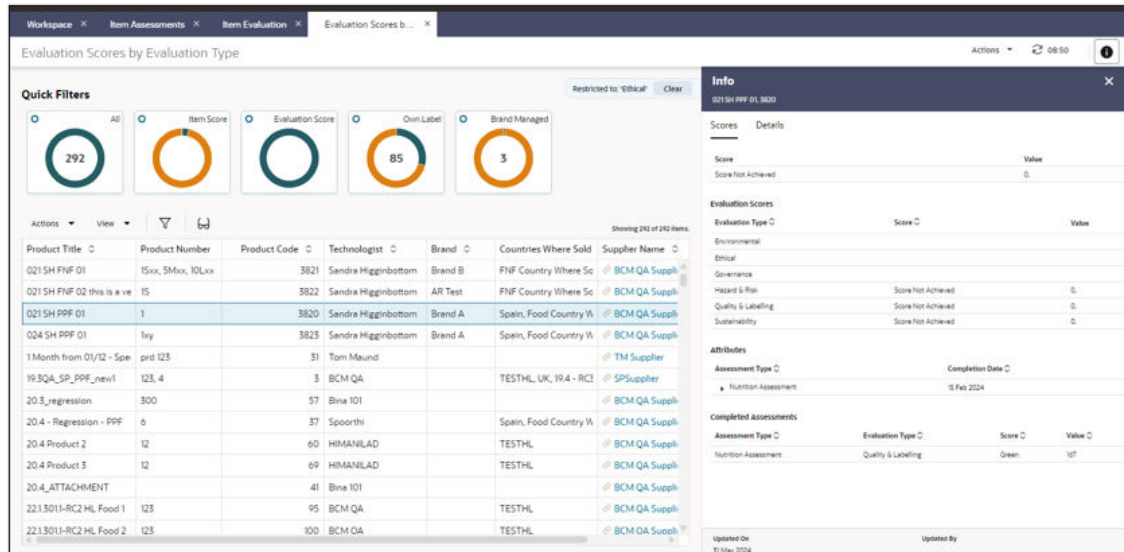
Based on the existing Site Evaluation dashboard, an Item Evaluation dashboard is available to analyze items based on the data from Product Records and Item Assessments. A suite of charts and drill-down list views is provided, with a set of selectors for filtering the contents.



The charts include:

- Item Scores by Brand
- Evaluation Scores by Evaluation Type
- Evaluation Scores by Brand and Evaluation Type
- Item Assessment Scores by Evaluation Type
- Item Assessments Due
- Item Assessments Overdue

Drilling into a chart presents a list view of the target data, with an Info panel.



Both Product Records and Sites can also have overall **Entity scores** automatically calculated, based on their collective Evaluation scores. The Entity score configuration and scoring mechanism is similar to that of Evaluation scores. The scores are presented in the Scores pages of the respective records.

## Third-Party LCA Integration

Third-Party LCA Integration is a facility for integrating with accredited external bodies and Life Cycle Assessment (LCA) partners for the capture of sustainability, environmental, ethical, and certification related data:

- Integration is through Assessments (utilizing the existing Scorecard API and its new inbound endpoints), supported by various ready-to-use Assessment Templates.
- A new Accredited Bodies option in the Tasks menu can be configured to provide external access accredited bodies' URLs.

The method of integration with third parties for the capture of external item and site data is to utilize the Scorecard API, which now allows for Assessments to be both retrieved and updated.

### Accredited Bodies

The retailer controls which third parties may collaborate by creating an Accredited Body record to register them as a partner, and an External System record to grant them access to the Scorecard REST API (endpoints for read and update access). The combination of Accredited Body and External System forms the security controls for which third parties may access the API, and to restrict access to specific Assessments.

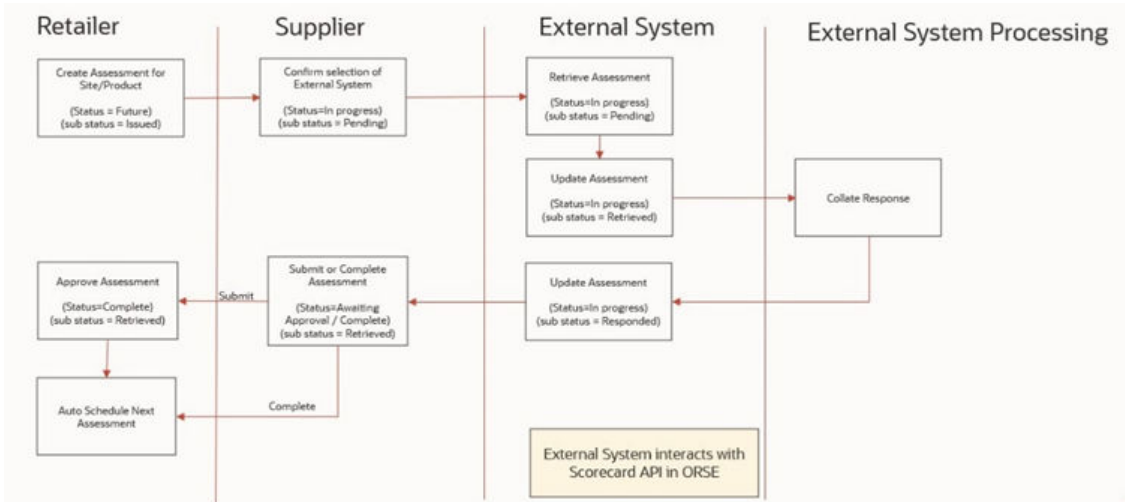
An Integration Type field on the Assessment Template identifies those where data is to be sourced from third parties. The options of Retailer Owned and Supplier Owned define whether the Assessments are being managed by the retailer or the supplier. Once an Accredited Body is registered, it can be selected within the template as being one of the third parties who may be assigned to Assessments of that type (multiple Accredited Bodies may be assigned to a template).

When an Assessment is created from a template with an Accredited Body assigned, the user confirms which single Accredited Body will be used to source the data for that Assessment. When the Assign Accredited Body action is used, the status of the Assessment becomes In Progress, meaning that it is available for retrieval by the designated third party.

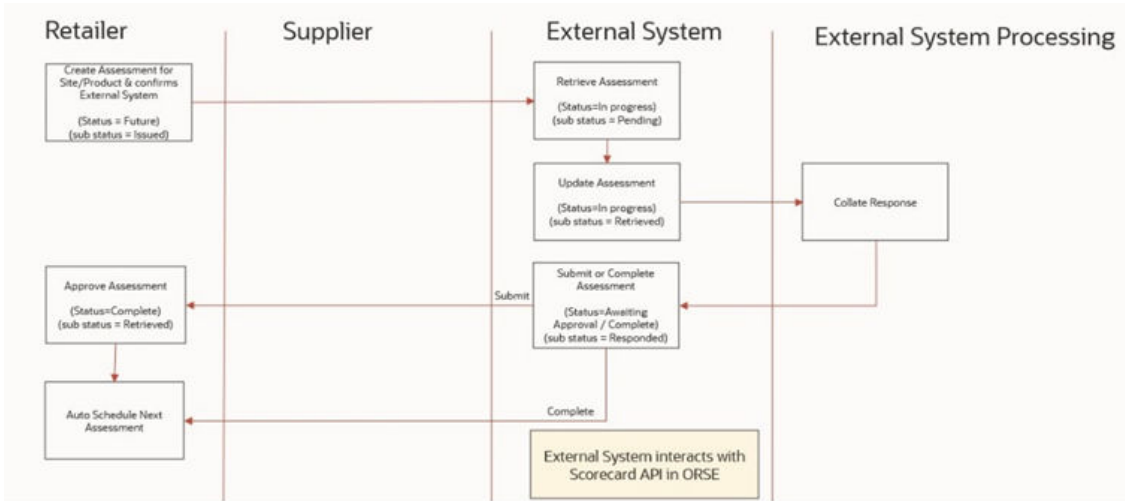
### Assessment Integration

The process for third parties to retrieve, respond to, and return Assessments they have been assigned is shown in the following diagrams. The key difference between the two models is: for Supplier Owned, the supplier is notified of the new Assessment and returns the populated Assessment to the retailer, whereas for Retailer Owned, the assessment is created by the retailer and is assigned directly to the third party, who returns the populated Assessment to the retailer.

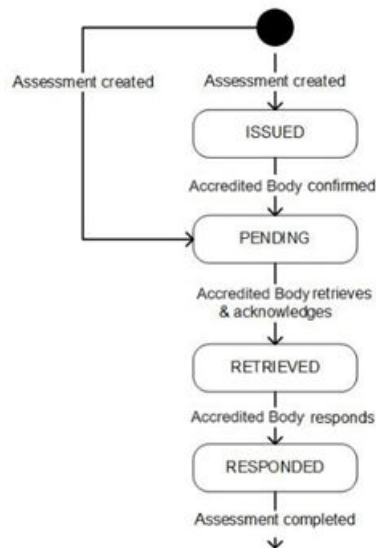
Supplier Owned model:



Retailer Owned Model:



A Sub Status field on the Assessment is used to control the workflow of those being progressed with a third party:



Third parties retrieve Assessments that have been assigned to them and submit an update to set the sub status to indicate they have been retrieved. Once the questions have been populated with responses that represent the data being provided, a further update is submitted, setting the sub status to indicate they have responded.

Assessment templates have options to set whether the third party and/or the supplier can set an Assessment as being complete, or whether they are submitted for the retailer's approval.

## Assessment Enhancements

The following enhancements are made to Assessments:

- **Assessment Questions** - the current set of question types (text, checkbox, and radio button) is extended to include:
  - Numeric - requires the response to be a number.
  - Date - response presents a date selector.
  - Picklist - response presents a predefined list of values for single or multiple selection.
  - Table - response presents a table of predefined columns, to which multiple rows can be added.
  - URL - response presents as a link.

Details
Questions
Scoring & Completion
Process Links

**Questions**

**1. Text Question**

Enter Answer Here...

**2. Single Picker question**

Enter Comments Here...

**3. Multi Picker question**

Enter Comments Here...

**4. Date question**

Enter Comments Here...

**5. Numeric question**

Enter Comments Here...

**6. URL question**

Enter URL Here...

Enter Comments Here...

**7. Table question**

Add

Delete
Insert
Up
Down

	Role	Name	Phone
<input type="checkbox"/>	<input type="text"/>	<input type="text"/>	<input type="text"/>

Enter Comments Here...

When creating a new question in the glossary, the default type is changed from Universal to General. When questions are updated in the glossary, the change is cascaded to the associated templates and future Assessments (a new prompt warns the administrator that it may take some time for the change to complete).

- **Answer Codes** - the question types with configurable responses (checkbox, radio button, and picklist) have an Answer Code added, allowing the responses to be individually referenced, such as for reporting purposes.
- **Assessment Disqualification** - allows specific responses to an Assessment question to be configured to automatically flag the Assessment as being *disqualified* based on its



responses. The disqualifications and a count of them are shown in the Assessment, to retailer users only.

- **Assessment Deletion** - a facility for deleting multiple Assessments through a single action.
- **Copy Assessment Responses** - allows the responses of an Assessment to be copied to another Assessment of the same type.
- **Inbound Scorecard API** - the current Scorecard REST API allows for the retrieval of Assessment details. It is extended to also allow for the update of Assessments.

## Delisting and Archiving Tools

An automatic process is introduced to delist or archive associated records when delisting Sites.

When a Site is set to the end-of-life status, any associated Product Records and Audits can be automatically delisted/archived.

The processes are enabled by system parameters, allowing client configuration of which types of records are to be automatically delisted/archived. See Post Release Tasks.

When delisting a Site (or setting it to the designated end-of-life status), the confirmation prompt will include a count of the number of Audits it has at Scheduled, In Progress, Awaiting Corrective Action, Awaiting Amendment, or Awaiting Sign Off status.

If the feature is not enabled, clicking OK to the prompt will simply delist the Site with no effect on the other records. Otherwise, according to the settings of the applicable system parameters, clicking OK will submit the batch job to set the Site to the designated end-of-life status, which will also:

- Archive its Active Products - if it is the last remaining\* Site for the Product.
- Set its Audits to Not Progressed or Abandoned status\*\*.

\* Last remaining Site meaning all other Sites associated with the Product Record are already at the end-of-life status.

\*\* The status to which Audits get set will depend on their current status. Scheduled audits will be set to Not Progressed; those at In Progress, Awaiting Corrective Action, Awaiting Amendment, or Awaiting Sign-off will be set to Abandoned.

## Dashboard Updates

Various usability improvements are made to the Supplier Evaluation dashboard and list views:

- **Zoom chart with double-click** - can access a zoomed version of a chart from the dashboard by double-clicking the chart or selecting a Zoom Chart menu option.
- **Zoomed chart data filtering** - can open the list view associated with a dashboard chart by double-clicking a segment or bar of a chart (the zoomed version of the chart only).
- **Show Chart button** - the Show Chart option on the grid toolbar is no longer required, so it is hidden in drill-down views.
- **Information panel default** - option for the user to see all the information panels automatically open or collapsed within list views.

# Post Release Tasks & Impact on Existing Installation

The following post release tasks and impact on an existing installation must be taken into account as part of this release.

## System Parameters

The following new features have system parameters, which must be set to control usage of the feature.

### Item Evaluation

Options for managing the use of Product Records - system parameters within the Products page.

Options for enabling Item Evaluation scoring - system parameters within the Scoring page.

Note the existing Supplier Evaluation Scoring & Integration system parameters page is now split over separate scoring and integration pages.

### Delisting and Archiving Tools

Options to enable the process (by default they are not enabled):

- Automatically Archive Products when Site set to end-of-life status/Specs de-listed
- Automatically set Audits to Not Progressed when Site set to end-of-life status
- Automatically set Sites to end-of-life status when last Product/Specification de-listed

Settings of the end-of-life sites statuses to be used by the process:

- Site End-of-life Status
- Preferred Site End-of-Life Status

## Reports

### Item Evaluation

If required, schedule any of the newly available reports or create and schedule custom variants:

- Item Assessment reports - new assessment summary, response, and score level reports (CR111 to CR115).
- Product Record reports - the Product report query is available for reporting on Product Records.

### Assessment Enhancements

If required, configure any Assessment reports to use the new Assessment question types. The new question types have separate columns in the report queries for their responses. Responses for Table type questions are not included.

Note that as the following report queries have been renamed, it may be necessary to reconfigure custom reports:

- Assessments becomes Site Assessments

- Assessment Scores Latest/Completed becomes Site Assessment Scores Latest/Completed
- Assessment Scores All becomes Site Assessment Scores All

## System Text

The following features introduce new system text:

- Item Evaluation
- Assessment Enhancements
- Delisting and Archiving Tools
- Dashboard Updates

System text records are added automatically during the release process, however any translation overrides must be added manually, by the retailer administrator.

Also review the following new email templates for any custom override requirements:

- ASSESS1 email for overdue Item Assessment reminders.
- ASSESS2 email for Item Assessment extracts.
- PR1 email for notifications of new Product Records.
- SITE END OF LIFE email for notifications that a site has been automatically set to its end-of-life status.

## Permissions

The features listed below require new authority profiles to be assigned to the appropriate users, and permissions to be set up in order to enable the features

The instructions for downloading and uploading the amended Permissions spreadsheet are as follows:

1. Log in as an Oracle Authorized Administrator user and go to Company > Admin > Roles & Permissions.
2. Open the Permissions page.
3. Download the active spreadsheet by selecting the row with *true* in the Active Permissions column, click *Download Selected*, and save locally.
4. Edit the downloaded spreadsheet, make the changes described above, then save the spreadsheet.
5. Upload the edited spreadsheet by clicking *Upload Permissions*, select the spreadsheet, and click *Ok*.
6. Apply the changes by selecting the uploaded spreadsheet row, click *Process Selected*, and then click *Ok* to confirm.

### Item Evaluation

- PRODUCT DEVELOPMENT MANAGER - new user role.
- PRODUCT RECORD CODES ADMINISTRATOR - new authority profile.
- PRODUCT ADMINISTRATOR - authority profile for POWER USER and SYSTEM ADMINISTRATOR user roles.

- RETAILER PRODUCT EDITOR - authority profile for TECHNOLOGIST and ASSISTANT TECHNOLOGIST user roles.
- RETAILER PRODUCT READER - authority profile for PRODUCT DEVELOPMENT MANAGER and BUYER user roles.
- SUPPLIER PRODUCT EDITOR - authority profile for SUPPLIER USER, SUPPLIER ADMINISTRATOR, SITE USER, and SITE ADMINISTRATOR user roles.
- SCORECARD REQUESTER - authority profile for access to the wizard for creation of multiple Assessments by retailer users (Assessment Requester).
- RETAILER SCORE VIEWER - authority profile allows retailer users to view the Scores page in Product Records.

Configure External System, Endpoint, and Service Access permissions to grant external bodies access to APIs.

Add the entries below to the designated page of the Permissions spreadsheet.

Page	Record (A)	Authority Profile (B)	Menu Option (C)	Sub Menu Option (D)	Action (E)	Data Record (F)	User Mode (L)	Access Level (M)
Scoring	Admin	CONFIGURATION EDITOR	Admin	Manage Entity Scoring Rules			NORMAL	Y
Scoring	Admin	ORACLE AUTHORIZED ADMINISTRATOR	Admin	Manage Entity Scoring Rules			NORMAL	Y
Scoring	Admin	INTEGRATION ADMINISTRATOR	Admin	Manage Entity Scoring Rules			NORMAL	Y
Scoring	Admin	CONFIGURATION EDITOR				ENTITY SCORING RULES	NORMAL	F
Scoring	Admin	CONFIGURATION EDITOR			SET TO ACTIVE	ENTITY SCORING RULES	NORMAL	Y
Scoring	Admin	CONFIGURATION EDITOR			SET TO INACTIVE	ENTITY SCORING RULES	NORMAL	Y
Scoring	Admin	CONFIGURATION EDITOR			NEW VERSION	ENTITY SCORING RULES	NORMAL	Y
Scoring	Admin	ORACLE AUTHORIZED ADMINISTRATOR				ENTITY SCORING RULES	NORMAL	F
Scoring	Admin	ORACLE AUTHORIZED ADMINISTRATOR			SET TO ACTIVE	ENTITY SCORING RULES	NORMAL	Y

Page	Record (A)	Authority Profile (B)	Menu Option (C)	Sub Menu Option (D)	Action (E)	Data Record (F)	User Mode (L)	Access Level (M)
Scoring	Admin	ORACLE AUTHORIZED ADMINISTRATOR			SET TO INACTIVE	ENTITY SCORING RULES	NORMAL	Y
Scoring	Admin	ORACLE AUTHORIZED ADMINISTRATOR			NEW VERSION	ENTITY SCORING RULES	NORMAL	Y
Scoring	Admin	INTEGRATION ADMINISTRATOR				ENTITY SCORING RULES	NORMAL	F
Scoring	Admin	INTEGRATION ADMINISTRATOR			SET TO ACTIVE	ENTITY SCORING RULES	NORMAL	Y
Scoring	Admin	INTEGRATION ADMINISTRATOR			SET TO INACTIVE	ENTITY SCORING RULES	NORMAL	Y
Scoring	Admin	INTEGRATION ADMINISTRATOR			NEW VERSION	ENTITY SCORING RULES	NORMAL	Y
Scoring	Admin	ORACLE AUTHORIZED ADMINISTRATOR				ENTITY SCORING CRITERIA	NORMAL	F
Scoring	Admin	CONFIGURATION EDITOR				ENTITY SCORING CRITERIA	NORMAL	F
Scoring	Admin	INTEGRATION ADMINISTRATOR				ENTITY SCORING CRITERIA	NORMAL	F
Scoring	Admin	CONFIGURATION EDITOR				ENTITY SCORING RULE SCORE DETAIL	NORMAL	F
Scoring	Admin	ORACLE AUTHORIZED ADMINISTRATOR				ENTITY SCORING RULE SCORE DETAIL	NORMAL	F
Scoring	Admin	INTEGRATION ADMINISTRATOR				ENTITY SCORING RULE SCORE DETAIL	NORMAL	F

Page	Record (A)	Authority Profile (B)	Menu Option (C)	Sub Menu Option (D)	Action (E)	Data Record (F)	User Mode (L)	Access Level (M)
Scoring	Admin	CONFIGURATION EDITOR				REVIEW SCORE	NORMAL	F
Scoring	Admin	CONFIGURATION EDITOR			SET TO ACTIVE	REVIEW SCORE	NORMAL	Y
Scoring	Admin	CONFIGURATION EDITOR			SET TO INACTIVE	REVIEW SCORE	NORMAL	Y
Scoring	Admin	CONFIGURATION EDITOR			NEW VERSION	REVIEW SCORE	NORMAL	Y
Scoring	Admin	ORACLE AUTHORIZED ADMINISTRATOR				REVIEW SCORE	NORMAL	F
Scoring	Admin	ORACLE AUTHORIZED ADMINISTRATOR			SET TO ACTIVE	REVIEW SCORE	NORMAL	Y
Scoring	Admin	ORACLE AUTHORIZED ADMINISTRATOR			SET TO INACTIVE	REVIEW SCORE	NORMAL	Y
Scoring	Admin	ORACLE AUTHORIZED ADMINISTRATOR			NEW VERSION	REVIEW SCORE	NORMAL	Y
Scoring	Admin	INTEGRATION ADMINISTRATOR				REVIEW SCORE	NORMAL	F
Scoring	Admin	INTEGRATION ADMINISTRATOR			SET TO ACTIVE	REVIEW SCORE	NORMAL	Y
Scoring	Admin	INTEGRATION ADMINISTRATOR			SET TO INACTIVE	REVIEW SCORE	NORMAL	Y
Scoring	Admin	INTEGRATION ADMINISTRATOR			NEW VERSION	REVIEW SCORE	NORMAL	Y
Scoring	Admin	CONFIGURATION EDITOR	Admin	Manage Review Score			NORMAL	Y

Page	Record (A)	Authority Profile (B)	Menu Option (C)	Sub Menu Option (D)	Action (E)	Data Record (F)	User Mode (L)	Access Level (M)
Scoring	Admin	ORACLE AUTHORIZED ADMINISTRATOR	Admin	Manage Review Score			NORMAL	Y
Scoring	Admin	INTEGRATION ADMINISTRATOR	Admin	Manage Review Score			NORMAL	Y
Scoring	Admin	CONFIGURATION EDITOR				REVIEW SCORING RULE SCORE DETAIL	NORMAL	F
Scoring	Admin	ORACLE AUTHORIZED ADMINISTRATOR				REVIEW SCORING RULE SCORE DETAIL	NORMAL	F
Scoring	Admin	INTEGRATION ADMINISTRATOR				REVIEW SCORING RULE SCORE DETAIL	NORMAL	F
Scoring	Admin	CONFIGURATION EDITOR	Admin	Manage Review Scoring Rules			NORMAL	Y
Scoring	Admin	ORACLE AUTHORIZED ADMINISTRATOR	Admin	Manage Review Scoring Rules			NORMAL	Y
Scoring	Admin	INTEGRATION ADMINISTRATOR	Admin	Manage Review Scoring Rules			NORMAL	Y
Scoring	Admin	CONFIGURATION EDITOR				REVIEW SCORING RULES	NORMAL	F
Scoring	Admin	CONFIGURATION EDITOR			SET TO ACTIVE	REVIEW SCORING RULES	NORMAL	Y
Scoring	Admin	CONFIGURATION EDITOR			SET TO INACTIVE	REVIEW SCORING RULES	NORMAL	Y
Scoring	Admin	CONFIGURATION EDITOR			NEW VERSION	REVIEW SCORING RULES	NORMAL	Y
Scoring	Admin	ORACLE AUTHORIZED ADMINISTRATOR				REVIEW SCORING RULES	NORMAL	F

Page	Record (A)	Authority Profile (B)	Menu Option (C)	Sub Menu Option (D)	Action (E)	Data Record (F)	User Mode (L)	Access Level (M)
Scoring	Admin	ORACLE AUTHORIZED ADMINISTRATOR			SET TO ACTIVE	REVIEW SCORING RULES	NORMAL	Y
Scoring	Admin	ORACLE AUTHORIZED ADMINISTRATOR			SET TO INACTIVE	REVIEW SCORING RULES	NORMAL	Y
Scoring	Admin	ORACLE AUTHORIZED ADMINISTRATOR			NEW VERSION	REVIEW SCORING RULES	NORMAL	Y
Scoring	Admin	INTEGRATION ADMINISTRATOR				REVIEW SCORING RULES	NORMAL	F
Scoring	Admin	INTEGRATION ADMINISTRATOR			SET TO ACTIVE	REVIEW SCORING RULES	NORMAL	Y
Scoring	Admin	INTEGRATION ADMINISTRATOR			SET TO INACTIVE	REVIEW SCORING RULES	NORMAL	Y
Scoring	Admin	INTEGRATION ADMINISTRATOR			NEW VERSION	REVIEW SCORING RULES	NORMAL	Y
Scoring	Admin	ORACLE AUTHORIZED ADMINISTRATOR				REVIEW SCORING CRITERIA	NORMAL	F
Scoring	Admin	CONFIGURATION EDITOR				REVIEW SCORING CRITERIA	NORMAL	F
Scoring	Admin	INTEGRATION ADMINISTRATOR				REVIEW SCORING CRITERIA	NORMAL	F
Admin	Admin	CONFIGURATION EDITOR	Admin	Accredited Body			NORMAL	Y
Admin	Admin	ORACLE AUTHORIZED ADMINISTRATOR	Admin	Accredited Body			NORMAL	Y
Admin	Admin	PRODUCT ADMINISTRATOR				PRODUCT RECORD STATUS	NORMAL	W



Page	Record (A)	Authority Profile (B)	Menu Option (C)	Sub Menu Option (D)	Action (E)	Data Record (F)	User Mode (L)	Access Level (M)
Admin	Admin	PRODUCT ADMINISTRATOR	Admin	Product Record Status			NORMAL	Y
Admin	Admin	CONFIGURATION EDITOR	Admin	Product Record Status			NORMAL	Y
Admin	Admin	CONFIGURATION EDITOR				ACCREDITED BODY	NORMAL	F
Admin	Admin	ORACLE AUTHORIZED ADMINISTRATOR				ACCREDITED BODY	NORMAL	F
Admin	Admin	CONFIGURATION EDITOR	Admin	PRODUCT INTEGRATION SYSTEM			NORMAL	Y
Admin	Admin	CONFIGURATION EDITOR				PRODUCT INTEGRATION SYSTEM	NORMAL	F
Admin	Admin	CONFIGURATION EDITOR				PRODUCT RECORD STATUS	NORMAL	W
Admin	Admin	ORACLE AUTHORIZED ADMINISTRATOR				PRODUCT INTEGRATION SYSTEM	NORMAL	F
Admin	Admin	ORACLE AUTHORIZED ADMINISTRATOR	Admin	PRODUCT INTEGRATION SYSTEM			NORMAL	Y
Admin	Admin	PRODUCT ADMINISTRATOR	Admin	PRODUCT INTEGRATION SYSTEM			NORMAL	Y
Admin	Admin	PRODUCT ADMINISTRATOR				PRODUCT INTEGRATION SYSTEM	NORMAL	F
Admin	Admin	CONFIGURATION EDITOR	Admin	Division			NORMAL	Y
Admin	Admin	ORACLE AUTHORIZED ADMINISTRATOR	Admin	Division			NORMAL	Y
Admin	Admin	ORACLE AUTHORIZED ADMINISTRATOR				Division	NORMAL	F

Page	Record (A)	Authority Profile (B)	Menu Option (C)	Sub Menu Option (D)	Action (E)	Data Record (F)	User Mode (L)	Access Level (M)
Admin	Admin	CONFIGURATION EDITOR				Division	NORMAL	F
Product	Product	PRODUCT ADMINISTRATOR				PRODUCT CODE	NORMAL	F
Product	Product	RETAILER PRODUCT EDITOR				PRODUCT CODE	NORMAL	F
Product	Product	RETAILER PRODUCT READER				PRODUCT CODE	NORMAL	R
Product	Product	SUPPLIER PRODUCT EDITOR				PRODUCT CODE	NORMAL	R
Admin	Admin	CONFIGURATION EDITOR	Admin	Attachment Type			NORMAL	Y
Admin	Admin	GLOBAL CHANGES ADMINISTRATOR	Admin	Change Product Role Users			NORMAL	Y

### Assessment Enhancements

Add the entries below to the bottom of the designated page of the Permissions spreadsheet.

Page	Record (A)	Authority Profile (B)	Menu Option (C)	Sub Menu Option (D)	Action (E)	Data Record (F)	User Mode (L)	Access Level (M)
Admin	Admin	SCORECARD ADMINISTRATOR				SCORECARD ANSWER OPTION GLOSSARY	NORMAL	F
Admin	Admin	SCORECARD ADMINISTRATOR	Admin	SCORECARD ANSWER OPTION GLOSSARY			NORMAL	Y
Admin	Admin	SCORECARD ADMINISTRATOR				SCORECARD ANSWER OPTION DETAIL	NORMAL	F
Admin	Admin	SCORECARD ADMINISTRATOR	Admin	SCORECARD ANSWER OPTION DETAIL			NORMAL	Y
Product	Product	SCORECARD ADMINISTRATOR			New Scorecard	Scorecard	NORMAL	Y
Product	Product	SCORECARD EDITOR			New Scorecard	Scorecard	NORMAL	Y

Page	Record (A)	Authority Profile (B)	Menu Option (C)	Sub Menu Option (D)	Action (E)	Data Record (F)	User Mode (L)	Access Level (M)
Product	Product	SUPPLIER SCORECARD EDITOR			New Scorecard	Scorecard	NORMAL	Y
Scorecard	Scorecard	SCORECARD REQUESTOR				Scorecard	NORMAL	F
Scorecard	Scorecard	SCORECARD REQUESTOR	mySupplier	Scorecards			NORMAL	Y
Scorecard	Scorecard	SCORECARD REQUESTOR	myCompany	Scorecards			NORMAL	Y
Scorecard	Scorecard	SCORECARD REQUESTOR	mySupplier	Scorecards			RESTRICTED	Y
Scorecard	Scorecard	SCORECARD REQUESTOR	myCompany	Scorecards			RESTRICTED	Y
Scorecard	Scorecard	SCORECARD REQUESTOR	Scorecard	Extract Scorecard			NORMAL	Y
Scorecard	Scorecard	SCORECARD REQUESTOR	Scorecard	Future Scorecard			NORMAL	Y
Site	Site	SCORECARD REQUESTOR			New Scorecard	Scorecard	NORMAL	Y
Product	Product	SCORECARD REQUESTOR			New Scorecard	Scorecard	NORMAL	Y
Scorecard	Scorecard	SCORECARD ADMINISTRATOR				Selection Status	NORMAL	F
Scorecard	Scorecard	SCORECARD ADMINISTRATOR	Admin	Selection Status			NORMAL	Y

### Copy Assessment Responses

Add the entries below to the bottom of the Scorecard page of the Permissions spreadsheet.

Record (A)	Authority Profile (B)	Action (E)	Data Record (F)	User Mode (L)	Access Level (M)
Scorecard	SCORECARD EDITOR	COPY RESPONSES	Scorecard	NORMAL	Y
Scorecard	SCORECARD ADMINISTRATOR	COPY RESPONSES	Scorecard	NORMAL	Y
Scorecard	SUPPLIER SCORECARD EDITOR	COPY RESPONSES	Scorecard	NORMAL	Y
Scorecard	SCORECARD EDITOR	COPY RESPONSES	Scorecard	NORMAL	Y
Scorecard	SCORECARD ADMINISTRATOR	COPY RESPONSES	Scorecard	NORMAL	Y
Scorecard	SUPPLIER SCORECARD EDITOR	COPY RESPONSES	Scorecard	NORMAL	Y
Scorecard	SCORECARD REQUESTOR	COPY RESPONSES	Scorecard	NORMAL	Y
Scorecard	SCORECARD REQUESTOR	COPY RESPONSES	Scorecard	NORMAL	Y

## Global Configuration

### Item Evaluation

Configure the Product Record and Assessment glossaries, including:

- Business Categories, Divisions, Brands, Sub Brands, Benchmark Brands, and Attachment Folders for Products.
- System, Business Unit, and Currency glossaries for use in the new Product Codes table.
- Assessment Questions, Assessment Templates, and Accredited Bodies for Item Assessments.
- Evaluation Types and Scoring Rules glossaries for Item Assessments.
- Configure any Custom Fields required for the Product Records or Assessments.
- Configure the PR1 email template for the required notifications of new Product Records.

### Assessment Enhancements

Configure the Assessment Picklist, Assessment Question, and Assessment Template glossaries for use of the new Assessment question types.

Note that for any existing Assessment data integrations, the responses for the new question types become available in the Scorecard REST API and data extract files. Responses for Table type questions are not included.

## Database Update Scripts

Upgrade scripts run as part of the installation.

- A new Assessment Level field on Assessment Templates and Assessments is set as being for *Site* Assessments.

- Existing Supplier Evaluation Type and Scoring Rules glossary entries are set as being for *Site* level Assessments.
- Answer Codes are assigned to existing radio button and checkbox type questions in Assessment Questions and Assessment Templates.

## Enabling Identity Management Notifications

As an IDCS or OCI IAM Administrator, verify that Notifications are enabled in the corresponding Stage / Production tenant.

## Enabling User Roles

If they do not already exist, configure the *Power User*, *Account Administrator*, *Assistant Technologist*, and *Site Inspector* user roles, and assign to the appropriate users.

The instructions for downloading and uploading the amended Permissions spreadsheet are as follows:

1. Log in as an Oracle Authorized Administrator user and go to Company > Admin > Roles & Permissions.
2. Open the Permissions page.
3. Download the active spreadsheet by selecting the row with *true* in the Active Permissions column, click *Download Selected*, and save locally.
4. Edit the downloaded spreadsheet, make the changes described above, then save the spreadsheet.
5. Upload the edited spreadsheet by clicking *Upload Permissions*, select the spreadsheet, and click *Ok*.
6. Apply the changes by selecting the uploaded spreadsheet row, click *Process Selected*, and then click *Ok* to confirm.

# 2

## Browser Requirements



### Note:

Oracle Retail assumes that the retailer has ensured its Operating System has been patched with all applicable Windows updates.

The following browsers are supported:

- Mozilla Firefox
- Microsoft Edge
- Google Chrome (Desktop)

Microsoft has deprecated Internet Explorer 11 in Windows 10 and recommends using Edge as the default browser. Refer to the [Oracle Software Web Browser Support Policy](#) for additional information.

# 3

## Noteworthy Resolved Issues

For the Noteworthy Resolved Issues document for this release, see the following on My Oracle Support (MOS): Oracle Retail Supplier Evaluation Cloud Service Documentation Library at [Doc ID 2877111.1](#).

# 4

## Deprecated Features

As part of the continuous delivery model for cloud services, features and technical components of a solution may be removed or replaced to enhance the security, performance, and overall quality of the cloud service. When this occurs, the deprecation of a feature or component will be announced in advance, allowing customers sufficient time to anticipate the change and transition to any enhanced replacement feature/component. After the deprecation is announced, the deprecated feature or component will remain in the solution until the planned removal date and will not be enhanced or made compatible with other new features.

For the full schedule of planned deprecations for this product, see the Deprecation Advisory accessed from the following MOS Documentation Library: Oracle Retail Supplier Evaluation Cloud Service Documentation Library at [Doc ID 2877111.1](#).