

Oracle Server X7-2L Product Notes



E72464-23
November 2022



Oracle Server X7-2L Product Notes,

E72464-23

Copyright © 2017, 2022, Oracle and/or its affiliates.

Primary Author: Mark McGothigan Vonn Moore

This software and related documentation are provided under a license agreement containing restrictions on use and disclosure and are protected by intellectual property laws. Except as expressly permitted in your license agreement or allowed by law, you may not use, copy, reproduce, translate, broadcast, modify, license, transmit, distribute, exhibit, perform, publish, or display any part, in any form, or by any means. Reverse engineering, disassembly, or decompilation of this software, unless required by law for interoperability, is prohibited.

The information contained herein is subject to change without notice and is not warranted to be error-free. If you find any errors, please report them to us in writing.

If this is software, software documentation, data (as defined in the Federal Acquisition Regulation), or related documentation that is delivered to the U.S. Government or anyone licensing it on behalf of the U.S. Government, then the following notice is applicable:

U.S. GOVERNMENT END USERS: Oracle programs (including any operating system, integrated software, any programs embedded, installed, or activated on delivered hardware, and modifications of such programs) and Oracle computer documentation or other Oracle data delivered to or accessed by U.S. Government end users are "commercial computer software," "commercial computer software documentation," or "limited rights data" pursuant to the applicable Federal Acquisition Regulation and agency-specific supplemental regulations. As such, the use, reproduction, duplication, release, display, disclosure, modification, preparation of derivative works, and/or adaptation of i) Oracle programs (including any operating system, integrated software, any programs embedded, installed, or activated on delivered hardware, and modifications of such programs), ii) Oracle computer documentation and/or iii) other Oracle data, is subject to the rights and limitations specified in the license contained in the applicable contract. The terms governing the U.S. Government's use of Oracle cloud services are defined by the applicable contract for such services. No other rights are granted to the U.S. Government.

This software or hardware is developed for general use in a variety of information management applications. It is not developed or intended for use in any inherently dangerous applications, including applications that may create a risk of personal injury. If you use this software or hardware in dangerous applications, then you shall be responsible to take all appropriate fail-safe, backup, redundancy, and other measures to ensure its safe use. Oracle Corporation and its affiliates disclaim any liability for any damages caused by use of this software or hardware in dangerous applications.

Oracle®, Java, and MySQL are registered trademarks of Oracle and/or its affiliates. Other names may be trademarks of their respective owners.

Intel and Intel Inside are trademarks or registered trademarks of Intel Corporation. All SPARC trademarks are used under license and are trademarks or registered trademarks of SPARC International, Inc. AMD, Epyc, and the AMD logo are trademarks or registered trademarks of Advanced Micro Devices. UNIX is a registered trademark of The Open Group.

This software or hardware and documentation may provide access to or information about content, products, and services from third parties. Oracle Corporation and its affiliates are not responsible for and expressly disclaim all warranties of any kind with respect to third-party content, products, and services unless otherwise set forth in an applicable agreement between you and Oracle. Oracle Corporation and its affiliates will not be responsible for any loss, costs, or damages incurred due to your access to or use of third-party content, products, or services, except as set forth in an applicable agreement between you and Oracle.

Contents

Using This Documentation

| | |
|-------------------------------|----|
| Product Documentation Library | vi |
| Feedback | vi |

1 Oracle Server X7-2L Product Information

| | |
|---|------|
| Supported Hardware | 1-1 |
| Related Information | 1-1 |
| Supported Firmware | 1-2 |
| Supported Operating Systems | 1-2 |
| New Features and Changes in Software 3.2.2 | 1-3 |
| Server Management Tools | 1-5 |
| Supported Storage Drives | 1-5 |
| Supported PCIe Cards | 1-6 |
| Oracle Server X7-2L Product Accessibility | 1-9 |
| Oracle Server X7-2L Hardware Accessibility | 1-9 |
| Oracle ILOM Accessibility | 1-10 |
| Oracle Hardware Management Pack Accessibility | 1-10 |
| BIOS Accessibility | 1-11 |
| Documentation Accessibility | 1-11 |
| Diversity and Inclusion | 1-12 |

2 Issues Fixed in Software Releases

| | |
|--|-----|
| Issue Fixed in Software Release 1.3.2 | 2-1 |
| Issue Fixed in Software Release 1.1 | 2-1 |
| Issues Fixed in Software Release 1.0.1 | 2-1 |

3 Hardware Issues

| | |
|--|-----|
| Diagnosing SAS Data Path Failures on Servers Using MegaRAID Disk Controllers | 3-1 |
| Failure of a Single Server Fan Module Might Impact Performance | 3-2 |
| Remove and Replace a Fan Module Within 20 Seconds | 3-3 |

| | |
|--|-----|
| Lockstep Memory (Channel) Mode Is Not Supported | 3-3 |
| MAC Address Mapping to Ethernet Ports | 3-3 |
| Do Not Mix Single-Rank and Dual-Rank DIMMs | 3-3 |
| Oracle Dual Port 25 Gb Ethernet Adapter Can Experience a Fault During System Reset | 3-4 |

4 BIOS Issues

| | |
|--|-----|
| Do Not Use the Network Adapter iSCSI Configuration in BIOS | 4-1 |
| Power Cycle the Server After Changing the Disk Freeze Lock Option | 4-1 |
| RAID Setting Lost If You Update BIOS Without Preserving BIOS Configuration | 4-1 |
| System BIOS Fast Boot Might Not Work Correctly When Updating System Software | 4-2 |
| System BIOS Update Fails When Upgrading Oracle ILOM | 4-2 |
| Unable to Recover Boot Order After Setting /HOST boot_device in BIOS | 4-2 |

5 Oracle ILOM Issues

| | |
|---|-----|
| Oracle ILOM Command Force Stop of PCIe Slot Power Can Cause Server PCIe Bus Error | 5-1 |
| DIMM Fault SPX86A-800A-95 - Memtest Single Symbol Test Failed - ILOM 5.1.0.21 | 5-3 |
| SSL Must Be Turned On When Booting a Redirected ISO Image | 5-5 |
| Reset Takes a Long Time and Causes the Server to Power Cycle | 5-5 |
| Deprecation Notice for Oracle ILOM IPMI 2.0 Management Service | 5-6 |
| Resolving Warning Messages for Custom CA and Self-Signed SSL Certificates | 5-6 |
| Changes to TLSv1.1 Configuration Property as of ILOM 4.0.3.x | 5-7 |

6 Oracle Solaris Issues

| | |
|---|-----|
| Oracle Solaris Installation Hangs When Remote KVMs Is Running | 6-1 |
|---|-----|

7 Linux Issues

| | |
|---|-----|
| Perform a Yum Update When Using UEK Kernel | 7-1 |
| Linux MMIO Kernel Configuration Can Affect Oracle Hardware Management Pack fwupdate Tool for Intel NIC/LOM Updates | 7-1 |
| Installing Oracle Linux 7 Update 3 on an NVMe Storage Device Larger Than 2 TB Might Fail | 7-2 |

8 Windows Issues

| | |
|---|-----|
| NVMe Phantom Drives Appear When Using Windows Server 2016 Inbox Drivers | 8-1 |
| NVMe Hot Plug Is Not Supported | 8-2 |

| | |
|--|-----|
| Updated Driver Is Required to iSCSI Boot Windows Server Using Intel i210 Gigabit Ethernet Connection | 8-3 |
|--|-----|

9 VMware ESXi Issues

| | |
|--|-----|
| VMware ESXi 6.5 U1 Does Not Include Driver for Oracle Dual Port 25 Gb Ethernet Adapter | 9-1 |
|--|-----|

10 Documentation Issues

| | |
|--|------|
| Updates for the Oracle Servers X7-2 and X7-2L Installation Guide | 10-1 |
| Server Components | 10-1 |
| Entire Document | 10-1 |
| Updates for the Oracle Server X7-2L Service Manual | 10-1 |
| Populating DIMMs for Optimal System Performance | 10-2 |
| DIMM Operating Speeds | 10-2 |
| Removing and Replacing an NVMe Storage Drive Using Oracle Linux | 10-2 |
| Install NVMe Cables | 10-3 |
| Install a Processor | 10-3 |
| Entire Document | 10-4 |
| DIMM and Processor Physical Layout | 10-4 |
| Network Management Port Status Indicators | 10-4 |
| Ethernet Port Status Indicators | 10-4 |
| Linux Nomenclature | 10-5 |

11 Software and Critical Patch Updates

| | |
|--|------|
| Update Your System to the Latest Software Release | 11-1 |
| Server Security, Software Releases, and Critical Patch Updates | 11-1 |
| Important – Install Latest OS Updates, Patches, and Firmware | 11-2 |

12 Getting Firmware and Software Updates

| | |
|---|------|
| Firmware and Software Updates | 12-1 |
| Firmware and Software Update Options | 12-1 |
| Software Releases | 12-2 |
| Getting Updates From My Oracle Support | 12-3 |
| Download Firmware and Software Updates From My Oracle Support | 12-3 |
| Update System Firmware Using Oracle ILOM | 12-3 |
| Installing System Firmware Using Other Methods | 12-5 |
| Downloading an OS or Software Applications | 12-6 |
| Oracle Support | 12-6 |

Using This Documentation

- **Overview** – Provides late-breaking information about Oracle Server X7-2L
- **Audience** – System administrators, network administrators, and service technicians
- **Required knowledge** – Advanced understanding of server systems

Copyright© 1994, 2022, Oracle et/ou ses affiliés.

- [Product Documentation Library](#)
- [Feedback](#)

Product Documentation Library

Documentation and resources for this product and related products are available at <https://www.oracle.com/goto/x7-2l/docs> .

Feedback

Provide feedback about this documentation at <https://www.oracle.com/goto/docfeedback> .

1

Oracle Server X7-2L Product Information

For the most updated information about supported firmware and operating systems, important operating notes, and known issues, refer to the latest platform Product Notes document, which is available in the Oracle Server X7-2L Documentation Library at <https://www.oracle.com/goto/x7-2l/docs>.

- [Supported Hardware](#)
- [Supported Firmware](#)
- [Supported Operating Systems](#)
- [New Features and Changes in Software 3.2.2](#)
- [Server Management Tools](#)
- [Supported Storage Drives](#)
- [Supported PCIe Cards](#)
- [Oracle Server X7-2L Product Accessibility](#)

Supported Hardware

You can find detailed information about supported hardware in these Oracle Server X7-2L documents:

- *Oracle Server X7-2L Installation Guide*
- *Oracle Server X7-2L Service Manual*

Within those documents, you can find descriptions of supported hardware components, including the following:

- Processors
- Memory modules (DIMMs)
- Storage drives
- Host bus adapters and other PCIe cards
- [Related Information](#)

Related Information

- [Supported Storage Drives](#)
- [Supported PCIe Cards](#)
- https://support.oracle.com/handbook_private/Systems/Oracle_Server_X7_2L/Oracle_Server_X7_2L.html (Access requires Oracle Support purchase and log in.)

Supported Firmware

Some product features are enabled only when the latest versions of patches or firmware are installed. You must install the latest system software release for optimal performance, security, and stability. See [Important – Install Latest OS Updates, Patches, and Firmware](#).

You can find detailed information about supported firmware releases here:

- [Latest Firmware Releases for Oracle x86 Servers](#)
- [Firmware Downloads and Release History for Oracle Systems](#)

Information about the latest firmware and Software Release, including tools, drivers, component firmware versions, and bug fixes is available in the ReadMe file for each Software Release. To learn how to access the ReadMe file, see [Getting Firmware and Software Updates](#).

Supported Operating Systems

The following table lists supported operating systems for Oracle Server X7-2L. To identify the latest version of an operating system supported on your server, go to an Oracle Hardware Compatibility List (HCL) or to the third-party operating system certification information.

| Operating System | Link to HCL or Other Certification Information |
|--------------------------|---|
| Oracle Linux | https://linux.oracle.com/pls/apex/f?p=117:1:3991604960223967 |
| Oracle VM | https://linux.oracle.com/pls/apex/f?p=117:1:3991604960223967 |
| Oracle Solaris | https://www.oracle.com/webfolder/technetwork/hcl/index.html |
| Microsoft Windows Server | https://www.windowsservercatalog.com/ |
| VMware ESXi | https://www.vmware.com/resources/compatibility/search.php |

The following table lists the latest supported operating systems and virtual machine software. Supported operating systems and software are cumulative with each release; that is, later software releases contain all components of earlier software releases.

| Platform Software Release | Latest Supported Operating Systems |
|---------------------------|--|
| 3.2.2 or later | <ul style="list-style-type: none"> • Oracle Linux 8 Update 4 |
| 3.1.4 | <ul style="list-style-type: none"> • Oracle Linux 8 Update 2, 3 • Oracle Linux 7 Update 9 |
| 3.1.0 | <ul style="list-style-type: none"> • Oracle Linux 8 Update 1 with the Unbreakable Enterprise Kernel Release 6 • Oracle Linux 7 Update 8 with the Unbreakable Enterprise Kernel Release 5 Update 3 • VMware ESXi 7.0 |

| Platform Software Release | Latest Supported Operating Systems |
|---------------------------|---|
| 1.7.0 | <ul style="list-style-type: none"> • Oracle Linux 8 • Oracle Linux 7 Update 7 with the Unbreakable Enterprise Kernel Release 5 Update 2 or later • VMware ESXi 6.7 Update 3 • VMware ESXi 6.5 Update 3 • Windows Server 2019 |
| 1.6.2 | No changes to supported operating systems or virtual machine software. |
| 1.6.0 | No changes to supported operating systems or virtual machine software. |
| 1.5.0 | No changes to supported operating systems or virtual machine software. |
| 1.4.0 | <ul style="list-style-type: none"> • Oracle Linux 7 Update 6 with Unbreakable Enterprise Kernel Release 5 (UEK R5) for the Red Hat Compatible Kernel • Oracle VM 3.4.6 |
| 1.3.2 | <ul style="list-style-type: none"> • Oracle Solaris 11.4 • VMware ESXi 6.7 Update 1 |
| 1.3.1 | <ul style="list-style-type: none"> • Oracle Linux 6 Update 10 with Unbreakable Enterprise Kernel Release 4 (UEK R4) for the Red Hat Compatible Kernel |
| 1.3 | <ul style="list-style-type: none"> • Oracle Linux 7 Update 5 with the Unbreakable Enterprise Kernel Release 5 (UEK R5) or the Red Hat Compatible Kernel • VMware ESXi 6.5 Update 2, and 6.7 |
| 1.2.1 | Oracle VM 3.4.5 |
| 1.2 | Oracle Linux 7 Update 5 with the Unbreakable Enterprise Kernel Release 4 (UEK R4) or the Red Hat Compatible Kernel |
| 1.1.3 | No changes to supported operating systems or virtual machine software. |
| 1.1.2 | No changes to supported operating systems or virtual machine software. |
| 1.1.1 | No changes to supported operating systems or virtual machine software. |
| 1.1 | Oracle Linux 7 Update 4 with the Unbreakable Enterprise Kernel Release 4 Update 4 (UEK R4u4) or the Red Hat Compatible Kernel |
| 1.0.1 | No changes to supported operating systems or virtual machine software. |
| 1.0 | <ul style="list-style-type: none"> • Oracle Linux 7 Update 3 with the Unbreakable Enterprise Kernel Release 4 Update 4 (UEK R4u4) or the Red Hat Compatible Kernel • Oracle Linux 6 Update 9 with the Unbreakable Enterprise Kernel Release 4 Update 4 (UEK R4u4) or the Red Hat Compatible Kernel • Oracle VM 3.4.4 with Unbreakable Enterprise Kernel Release 4 Update 4 (UEK R4u4) • Oracle Solaris 11.3 SRU 23 • Windows Server 2016 • Windows Server 2012 R2 • VMware ESXi 6.5 Update 1 |

New Features and Changes in Software 3.2.2

New features, major enhancements, bug fixes, and other changes that are introduced in platform software release 3.2.2 include:

- Oracle Integrated Lights Out Manager (ILOM) 5.0.2 features

- Oracle Hardware Management Pack Version 2.4.8
- Security updates
- Oracle ILOM Adaptive Double DRAM Device Correction (ADDDC) and Post Package Repair (PPR) features were added and enabled in the firmware. ADDDC is a RAS feature to test memory reliability.

 **Note:**

PPR is not enabled until Oracle ILOM 5.0.2.24 per the two BIOS bugs, but ADDDC is enabled in Oracle ILOM 5.0.1.28.

- Fixed issues:
 - **Hardware:**
 - Bug ID 31170440 - Incorrect DIMM slot callout by Oracle ILOM FMA (Fault Management Architecture). Fixed in Oracle ILOM 5.0.1.21.
 - Bug ID 31118365 - EXACS: MEMORY issue not reported in Oracle ILOM when Oracle Linux stops. Fixed in Oracle ILOM 5.0.1.28.
 - Bug ID 32298843 - Enh 32298843 - Oracle ILOM to issue UE ereport and log fault. Fixed in Oracle ILOM 5.0.1.28.
 - **Oracle ILOM:**
 - Bug ID 32033315 - Oracle ILOM stop/offline in FW 5.0.1.21. Fixed in Oracle ILOM 5.0.1.28.
 - Bug ID 33218717 - 800GB SSD reports disk.over-temperature when upgrading to Oracle ILOM 5.0.2.24. Fixed in Oracle ILOM 5.1.0.0.
 - **BIOS:**
 - BIOS 5.0.2.24 - Enh ID 32790718 - Enable PPR in memtest flow in X7. Fixed in Oracle ILOM 5.0.2.24.

The following table lists software release 3.2.2 supported operating systems and virtual machine software.

| Operating System | Supported Versions |
|------------------|--|
| Oracle Linux | Oracle Linux 6 Update 9, Oracle Linux 6 Update 10 Oracle Linux 7 Update 5, Oracle Linux 7 Update 6, Oracle Linux 7 Update 7, Oracle Linux 7 Update 8, Oracle Linux 7 Update 9 Oracle Linux 8 Update 1, Oracle Linux 8 Update 2, Oracle Linux 8 Update 3, Oracle Linux 8 Update 4 |
| Oracle VM | Oracle VM Server 3.4.6 |
| Oracle Solaris | Oracle Solaris 11 Update 3, Oracle Solaris 11 Update 4 |
| VMware ESXi | VMware ESXi 6.7 Update 1, VMware ESXi 6.7 Update 2, VMware ESXi 6.7 Update 3 VMware vSphere 7.0 U1 and vSphere 7.0 U2 |
| Windows | Microsoft Windows Server 2016, Microsoft Windows Server 2019 |

Server Management Tools

The following single system management tools are available for the server:

- **Oracle Integrated Lights Out Management (ILOM)**. For information, refer to the product information page at: <https://www.oracle.com/servers/technologies/integrated-lights-out-manager.html> . For documentation, refer to the Oracle Integrated Lights Out Manager (ILOM) 5.0 Documentation Library at: <https://www.oracle.com/goto/ilom/docs>

You can find descriptions of new Oracle ILOM 5.0 features in the *Oracle ILOM Feature Updates and Release Notes*.

- **Oracle Hardware Management Pack**, available with the Oracle Solaris OS or as a standalone product with other OS. For information, refer to the product information page at: <https://www.oracle.com/servers/technologies/hardware-management-pack.html> . For documentation and OS support matrix, refer to the Oracle Hardware Management Pack 2.4 Documentation Library at: <https://www.oracle.com/goto/ohmp/docs>

Oracle Hardware Management Pack for Oracle Solaris 11.4 Documentation Library at https://docs.oracle.com/cd/E79568_01/index.html

In addition, the following software is available to manage multiple systems in a data center:

Oracle Enterprise Manager Ops Center, available software to manage multiple systems in a data center. For information, refer to the product information page at: <https://www.oracle.com/enterprise-manager/technologies/> . For documentation, refer to the Oracle Enterprise Manager Cloud Control Documentation Library at: <https://docs.oracle.com/en/enterprise-manager/related-products.html>

Supported Storage Drives

The table below lists the storage drives and part numbers that are supported for use with Oracle Server X7-2L. Support for storage drives depends on the server model and its configuration. Basic storage drive support is listed below.

Internal Solid State Drive (SSD)

- 480 GB M.2 SATA SSD with riser card for 2U: 7117384 (factory installation). Refer to https://docs.oracle.com/cd/E86841_01/index.html

Internal Hard Disk Drive (HDD)

- 14 TB 7200 rpm 3.5-inch SAS-3 HDD: 7600029 (factory installation), 7600183 (orderable option). Refer to https://docs.oracle.com/cd/F15116_01/index.html
- 14 TB 7200 rpm 3.5-inch SAS-3 HDD without encryption: 7600030 (factory installation), 7600184 (orderable option)

NVM Express (NVMe)

- Oracle 6.4 TB NVMe SSD v2 with 3.5-inch bracket: 7120559 (factory installation), 7120560 (orderable option)
- Oracle 6.4 TB NVMe SSD with 3.5-inch bracket: 7115453 (factory installation), 7115456 (orderable option)

Supported PCIe Cards

The table below lists the PCI Express (PCIe) cards that are supported for use with Oracle Server X7-2L.

- PCIe slots 1 through 5 are nonfunctional in single-processor systems.
- Do not mix Emulex and QLogic versions of the PCIe Host Bus Adapter cards in the system. You can use PCIe option cards from only one vendor in the system.
- Do not mix Oracle Flash Accelerator F640 PCIe Card v2s and Oracle Flash Accelerator F640 PCIe Cards in the system.

| PCIe Card Installation Order | PCIe Card | Maximum Quantity Supported in a Single-Processor System | Slot Restrictions for a Single-Processor System | Maximum Quantity Supported in a Dual-Processor System | Slot Restrictions for a Dual-Processor System |
|------------------------------|---|---|---|---|---|
| 1 | Oracle Storage 12 Gb SAS PCIe RAID HBA, Internal: 16 port 7117125 (factory installation), 7117126 (orderable option) This HBA is required to manage SAS storage drives. | 1 | Supported in slot 11 only. | 1 | Supported in slot 11 only. |
| 2 | Oracle Storage 12 Gb SAS PCIe HBA, Internal: 8 port 7113249 (factory installation), 7113401 (orderable option) Optionally, this HBA can be installed in slots 10 and 11 to manage SAS storage drives instead of using the Oracle Storage 12 Gb SAS PCIe RAID HBA, Internal: 16 port in slot 11. | 2 | Supported in slots 10 and 11 only. | 2 | Supported in slots 10 and 11 only. |

| PCIe Card Installation Order | PCIe Card | Maximum Quantity Supported in a Single-Processor System | Slot Restrictions for a Single-Processor System | Maximum Quantity Supported in a Dual-Processor System | Slot Restrictions for a Dual-Processor System |
|------------------------------|--|---|---|---|---|
| 3 | Oracle Flash Accelerator F640 PCIe Card v2: 6.4 TB, NVMe PCIe 3.0 7120561 (factory installation), 7120562 (orderable option) | N/A | N/A | <ol style="list-style-type: none"> 1. 8 (no front disk is allowed) 2. 4 with one Oracle Storage 12 Gb SAS PCIe RAID HBA or Oracle Storage 12 Gb SAS PCIe HBA 3. 3 with Oracle NVMe PCIe Switch cards 4. 3 with 2x Oracle Storage 12 Gb SAS PCIe HBA | <ol style="list-style-type: none"> 1. Supported in slots 2,3,4,5,6,8,9 and 10 2. Supported in slots 4,5,6 and 10 3. Supported in slots 1,2,5,6,7,10 4. Supported in slots 1 through 9 |
| 4 | Oracle Flash Accelerator F640 PCIe Card: 6.4 TB, NVMe PCIe 3.0 7115454 (factory installation), 7115455 (orderable option) | N/A | N/A | <ol style="list-style-type: none"> 1. 8 (no front disk is allowed) 2. 4 with one Oracle Storage 12 Gb SAS PCIe RAID HBA or Oracle Storage 12 Gb SAS PCIe HBA 3. 3 with Oracle NVMe PCIe Switch cards 4. 3 with 2x Oracle Storage 12 Gb SAS PCIe HBA | <ol style="list-style-type: none"> 1. Supported in slots 2,3,4,5,6,8,9 and 10 2. Supported in slots 4,5,6 and 10 3. Supported in slots 1,2,5,6,7,10 4. Supported in slots 1 through 9 |

| PCIe Card Installation Order | PCIe Card | Maximum Quantity Supported in a Single-Processor System | Slot Restrictions for a Single-Processor System | Maximum Quantity Supported in a Dual-Processor System | Slot Restrictions for a Dual-Processor System |
|------------------------------|--|---|---|---|---|
| 5 | Oracle NVMe PCIe Switch 7117385 (factory installation) The Oracle NVMe PCIe Switch is required to manage NVMe storage drives. | N/A | N/A | 4 | Supported in slots 3, 4, 8, and 9. |
| 6 | Oracle Quad Port 10GBase-T Adapter 7111182 (factory installation), 7111181 (orderable option) | 2 | Supported in slots 6 through 10. | 8 | Supported in slots 1 through 10. |
| 7 | Oracle Dual Port QDR InfiniBand Adapter M3 7104073 (factory installation), 7104074 (orderable option) | 2 | Supported in slots 6 through 10. | 2 | Supported in slots 1 through 10. |
| 8 | Oracle Quad 10 Gb or Dual 40 Gb Ethernet Adapter 7114148 (factory installation), 7114134 (orderable option) | 2 | Supported in slots 6 through 10. | 2 | Supported in slots 1 through 10. |
| 9 | Oracle Storage 12 Gb SAS PCIe HBA, External: 8 port 7110118 (factory installation), 7110119 (orderable option) | 2 | Supported in slots 6 through 10. | 2 | Supported in slots 1 through 10. |
| 10 | Oracle Storage Dual-Port 32 Gb Fibre Channel PCIe Low Profile HBA, Emulex 7115459 (factory installation), 7115461 (orderable option) | 2 | Supported in slots 6 through 10. | 4 | Supported in slots 1 through 10. |

| PCIe Card Installation Order | PCIe Card | Maximum Quantity Supported in a Single-Processor System | Slot Restrictions for a Single-Processor System | Maximum Quantity Supported in a Dual-Processor System | Slot Restrictions for a Dual-Processor System |
|------------------------------|--|---|---|---|---|
| 11 | Oracle Storage Dual-Port 32 Gb Fibre Channel PCIe Low Profile HBA, QLogic 7115460 (factory installation), 7115462 (orderable option) | 2 | Supported in slots 6 through 10. | 4 | Supported in slots 1 through 10. |
| 12 | Oracle Dual Port 25 Gb Ethernet Adapter 7118015 (factory installation), 7118016 (orderable option) | 2 | Supported in slots 6 through 10. | 8 | Supported in slots 1 through 10. |

Oracle Server X7-2L Product Accessibility

Oracle strives to make its products, services, and supporting documentation usable and accessible to the disabled community. To that end, products, services, and documentation include features that make the product accessible to users of assistive technology.

For more information about Oracle's commitment to accessibility, go to <https://www.oracle.com/pls/topic/lookup?ctx=acc&id=info>.

- [Oracle Server X7-2L Hardware Accessibility](#)
- [Oracle ILOM Accessibility](#)
- [Oracle Hardware Management Pack Accessibility](#)
- [BIOS Accessibility](#)
- [Documentation Accessibility](#)
- [Diversity and Inclusion](#)

Oracle Server X7-2L Hardware Accessibility

Oracle Server X7-2L hardware has color-coded labels, component touch points, and status indicators (LEDs) that provide information about the system. These labels, touch points, and indicators can be inaccessible features for sight-impaired users. The product's HTML documentation provides context and descriptive text available to assistive technologies to aid in interpreting status and understanding the system. For information about system-level descriptions, see the *Oracle Server X7-2L Service Manual* at <https://www.oracle.com/goto/x7-2l/docs>.

You can also use the built-in Oracle Integrated Lights Out Manager (ILOM) to obtain information about the system. Oracle ILOM provides a browser-based interface (BUI) and a

command-line interface (CLI) that support assistive technologies for real-time viewing of system status, indicator interpretation, and system configuration. For details, see [Oracle ILOM Accessibility](#).

Oracle ILOM Accessibility

You can use the Oracle ILOM BUI to monitor and manage the server hardware. The Oracle ILOM BUI does not require a special accessibility mode; rather, its accessibility features are always available. The BUI was developed using standard HTML and JavaScript and its features conform to accessibility guidelines.

To navigate a BUI page and select items or enter commands, use standard keyboard inputs, such as the Tab key to go to a selection, or the up and down arrow keys to scroll through the page. You can use standard keyboard combinations to make menu selections.

For example, using the Oracle ILOM Open Problems BUI page, you can identify faulted memory modules (DIMMs) or processors (CPUs) that would otherwise be identified by a lighted LED indicator on the motherboard. Likewise, you can use the Oracle ILOM BUI to monitor the hardware power states that are also indicated by flashing LED indicators on the hardware.

The Oracle ILOM CLI is an alternative and equivalent way to access the Oracle ILOM BUI features and functionality. Because the operating systems that run on the Oracle server hardware support assistive technologies to read the content of the screen, you can use the CLI as an equivalent means to access the color-based, mouse-based, and other visual-based utilities that are part of the BUI. For example, you can use a keyboard to enter CLI commands to identify faulted hardware components, check system status, and monitor system health.

You can use the Oracle ILOM Remote Console Plus application to access both a text-based serial console and a graphics-based video console that enable you to remotely redirect host server system keyboard, video, mouse, and storage devices. Note, however, that the Oracle ILOM Java Remote Console Plus does not support scaling of the video frame within the Java application. You need to use assistive technology to enlarge or reduce the content in the Java Remote Console Plus display.

As an alternative method to using the BIOS Setup Utility to configure BIOS settings, Oracle ILOM provides a set of configurable properties that can help you manage the BIOS configuration parameters on an Oracle x86 server. Using Oracle ILOM, you can do the following:

- Back up a copy of the BIOS configuration parameters to an XML file using the Oracle ILOM BUI.
- Edit the XML file using a standard XML editor. The BIOS XML tags correlate directly to the BIOS screen labels.
- Restore the XML file of the backed up or edited configuration parameters to BIOS.

The BUI and CLI methods for using Oracle ILOM are described in the accessible HTML documentation for Oracle ILOM at <https://www.oracle.com/goto/ilom/docs>.

Oracle Hardware Management Pack Accessibility

Oracle Hardware Management Pack software is a set of CLI tools. Oracle Hardware Management Pack software does not include product-specific accessibility features.

Using a keyboard, you can run the CLI tools as text commands from the operating system of a supported Oracle server. All output is text-based.

Additionally, most Oracle Hardware Management Pack tools support command output to a text log file or XML file, which can be used for text-to-speech conversion. Accessible man pages are available that describe the Hardware Management Pack tools on the system on which those tools are installed.

You can install and uninstall Oracle Hardware Management Pack by using text commands entered from the CLI. Assistive technology products such as screen readers, digital speech synthesizers, or magnifiers can be used to read the content of the screen.

Refer to the assistive technology product documentation for information about operating system and command-line interface support.

The CLI tools for using the software are described in the accessible HTML documentation for Hardware Management Pack at <https://www.oracle.com/goto/ohmp/docs>.

BIOS Accessibility

When viewing BIOS output from a terminal using the serial console redirection feature, some terminals do not support function key input. However, BIOS supports the mapping of function keys to Control key sequences when serial redirection is enabled. Descriptions of the function key to Control key sequence mappings are provided in the product documentation, typically within the server Service Manual. You can navigate the BIOS Setup Utility by using either a mouse or keyboard commands.

As an alternative method of configuring BIOS settings using the BIOS Setup Utility screens, Oracle ILOM provides a set of configurable properties that can help you manage the BIOS configuration parameters on an Oracle x86 server. For more information, see [Oracle ILOM Accessibility](#).

BIOS information and its functions are documented in the *Oracle Server X7-2L Service Manual* and *Oracle Servers X7-2 and X7-2L Installation Guide*.

Documentation Accessibility

Documentation for Oracle hardware is provided in HTML and PDF formats. The HTML documents are accessible using standard operating system controls and assistive technology. PDF documents are also provided, but are not an accessible format. PDF documents are considered support documents because the PDF content is available in accessible HTML format.

Product documentation provides figures, other types of images, and screenshots that do not rely on color for interpretation. Within the figures, callouts indicate the referenced component information. The callouts are mapped within a table to provide text descriptions of the referenced parts of the figures. In addition, alternative text is provided for all tables and images that provides the context of the information and images.

Note that screen readers might not always correctly read the code examples in the documentation. The conventions for writing code require that closing braces should appear on an otherwise empty line. However, some screen readers might not always read a line of text that consists solely of a bracket or brace.

The documentation might contain links to web sites of other companies and organizations that Oracle does not own or control. Oracle neither evaluates nor makes any representations regarding the accessibility of these web sites.

You can access the accessible HTML documentation for Oracle Server X7-2L products at <https://www.oracle.com/goto/x7-2l/docs> .

Diversity and Inclusion

Oracle is fully committed to diversity and inclusion. Oracle respects and values having a diverse workforce that increases thought leadership and innovation. As part of our initiative to build a more inclusive culture that positively impacts our employees, customers and partners we are working to remove insensitive terms from our products and documentation. We are also mindful of the necessity to maintain compatibility with our customers' existing technologies and the need to ensure continuity of service as Oracle's offerings and industry standards evolve. Because of these technical constraints, our effort to remove insensitive terms is ongoing and will take time and external cooperation.

2

Issues Fixed in Software Releases

This section lists issues that have been fixed in software releases.

- [Issue Fixed in Software Release 1.3.2](#)
- [Issue Fixed in Software Release 1.1](#)
- [Issues Fixed in Software Release 1.0.1](#)

Issue Fixed in Software Release 1.3.2

| Bug ID | Issue |
|--------------|---|
| Bug 28654297 | Oracle ILOM Reports a Fault for NVMe Devices When Performing a Reboot, Firmware Update, or Hot-Plug Operation |

Issue Fixed in Software Release 1.1

| Bug ID | Issue |
|--------------|---|
| Bug 25767311 | Unable to Mount an ISO Image to Install Oracle Solaris Over Remote KVMs |

Issues Fixed in Software Release 1.0.1

| Bug ID | Issue |
|--------------|---|
| Bug 26668684 | Windows Server 2012 R2 Software RAID 1 Is Not Supported on NVMe PCIe 3.0 SSDs With the Inbox Microsoft Driver |
| Bug 26373358 | System BIOS Does Not Consistently Update the CPU Active Processor Cores Setting |

3

Hardware Issues

This section describes important operating notes and known hardware issues for Oracle Server X7-2L.

- [Diagnosing SAS Data Path Failures on Servers Using MegaRAID Disk Controllers](#)
- [Failure of a Single Server Fan Module Might Impact Performance](#)
- [Remove and Replace a Fan Module Within 20 Seconds](#)
- [Lockstep Memory \(Channel\) Mode Is Not Supported](#)
- [MAC Address Mapping to Ethernet Ports](#)
- [Do Not Mix Single-Rank and Dual-Rank DIMMs](#)
- [Oracle Dual Port 25 Gb Ethernet Adapter Can Experience a Fault During System Reset](#)

Diagnosing SAS Data Path Failures on Servers Using MegaRAID Disk Controllers

Important Operating Note

On Oracle x86 servers using MegaRAID disk controllers, Serial Attached SCSI (SAS) data path errors can occur. To triage and isolate a data path problem on the SAS disk controller, disk backplane (DBP), SAS cable, SAS expander, or hard disk drive (HDD), gather and review the events in the disk controller event log. Classify and analyze all failure events reported by the disk controller based on the server SAS topology.

To classify a MegaRAID disk controller event:

- Gather and parse the MegaRAID disk controller event logs either by running the automated `sundiag` utility or manually using the `storcli` command.
 - For Oracle Exadata Database Machine database or storage cell servers, run the `sundiag` utility.
 - For Oracle Server X7-2L, use the `storcli` command.

For example, manually gather and parse the controller event log by using the `storcli` command. At the root prompt, type:

```
root# ./storcli64/c0 show events file=event.log
Controller=0
Status=Success
```

Note:

Use the existing name of the event log as the name for the disk controller event log. This produces a MegaRAID controller event log with the given file name `event.log`.

To show drive and slot errors separately, at the root prompt, type:

```
root# /opt/MegaRAID/storcli/storcli64 /c0 /eall /sall show errorcounters
Controller=0
Status=Success
Description=Show Drive/Cable Error Counters Succeeded.
```

Error Counters:

| Drive | Error Counter for Drive Error | Error Counter for Slot |
|------------|-------------------------------|------------------------|
| /c0/e8/s0 | 0 | 0 |
| /c0/e8/s1 | 0 | 0 |
| /c0/e8/s2 | 0 | 0 |
| /c0/e8/s3 | 0 | 0 |
| /c0/e8/s4 | 0 | 0 |
| /c0/e8/s5 | 0 | 0 |
| /c0/e8/s12 | 0 | 0 |
| /c0/e8/s13 | 0 | 0 |

These error counters reflect drive or slot errors separately.

The following SCSI sense key errors found in the event log in SAS data path failures indicate a SAS data path fault:

```
B/4B/05 :SERIOUS: DATA OFFSET ERROR
B/4B/03 :SERIOUS: ACK/NAK TIMEOUT
B/47/01 :SERIOUS: DATA PHASE CRC ERROR DETECTED
B/4B/00 :SERIOUS: DATA PHASE ERROR
```

A communication fault between the disk and the host bus adapter causes these errors. The presence of these errors, even on a single disk, means there is a data path issue. The RAID controller, SAS cables, SAS expander, or disk backplane might be causing the interruption to the communication in the path between the RAID controller and the disks.

Oracle Service personnel can find more information about the diagnosis and triage of hard disk and SAS data path failures on x86 servers at the My Oracle Support web site: <https://support.oracle.com> . Refer to the Knowledge Article Doc ID 2161195.1. If there are multiple, simultaneous disk problems on an Exadata server, Oracle Service personnel can refer to Knowledge Article Doc ID 1370640.1.

Failure of a Single Server Fan Module Might Impact Performance

Important Operating Note

If a single server fan module fails and the server's operating temperature rises above 30 degrees C (86 degrees F), the performance of the server's processors might be reduced.

Remove and Replace a Fan Module Within 20 Seconds

Important Operating Note

When removing and replacing a server fan module, you must complete the entire removal and replacement procedure within 20 seconds in order to maintain adequate cooling within the system. In anticipation of this time limit, prior to starting the replacement procedure, obtain the replacement fan module and verify that the new fan module is ready for installation. Remove and replace only one fan module at a time.

Fan modules are hot-swappable components, with N+1 fan redundancy. Each fan module contains two fans, with one fan motor per fan. The two fan motors provide separate tachometer signals so that the fan module reports two tachometer signals to Oracle ILOM. Even if only one fan motor is faulted within the fan module, the Oracle ILOM service processor detects that two fan motors have failed to spin while the fan module is removed. If the fan module is not replaced within 20 seconds of removal, Oracle ILOM will take the protective action to shut down the system to prevent thermal damage to the system. This is expected behavior.

Lockstep Memory (Channel) Mode Is Not Supported

Important Operating Note

Your Oracle Server X7-2L does not support lockstep memory mode, which is also known as double device data correction, or Extended ECC.

MAC Address Mapping to Ethernet Ports

Important Operating Note

A system serial label that displays the MAC ID (and the associated barcode) for the server is attached to the top, front-left side of the Oracle Server X7-2L server disk cage bezel.

This MAC ID (and barcode) corresponds to a hexadecimal (base 16) MAC address for a sequence of six consecutive MAC addresses. These six MAC addresses correspond to the server's network ports as shown in the following table.

| Base MAC Address | Corresponding Ethernet Port |
|------------------|---|
| "base" + 0 | NET 0 |
| "base" + 1 | Unassigned |
| "base" + 2 | Unassigned |
| "base" + 3 | Unassigned |
| "base" + 4 | SP (NET MGT) |
| "base" + 5 | Used only when Network Controller-Sideband Interface (NC-SI) sideband management is configured. |

Do Not Mix Single-Rank and Dual-Rank DIMMs

Important Operating Note

Mixing of single-rank and dual-rank DIMMs in the Oracle Server X7-2L is not supported.

Oracle Dual Port 25 Gb Ethernet Adapter Can Experience a Fault During System Reset

Bug ID: 26259122

Issue: The Oracle Dual Port 25 Gb Ethernet Adapter can experience a completion timeout fault during a system warm reset operation. The fault is logged by Oracle ILOM.

Affected Hardware: Oracle Dual Port 25 Gb Ethernet Adapter

Workaround: This issue has no functional impact on normal system behavior and can be ignored.

4

BIOS Issues

This section describes important operating notes and known BIOS issues for Oracle Server X7-2L.

- [Do Not Use the Network Adapter iSCSI Configuration in BIOS](#)
- [Power Cycle the Server After Changing the Disk Freeze Lock Option](#)
- [RAID Setting Lost If You Update BIOS Without Preserving BIOS Configuration](#)
- [System BIOS Fast Boot Might Not Work Correctly When Updating System Software](#)
- [System BIOS Update Fails When Upgrading Oracle ILOM](#)
- [Unable to Recover Boot Order After Setting /HOST boot_device in BIOS](#)

Do Not Use the Network Adapter iSCSI Configuration in BIOS

Important Operating Note

There are two locations within the Oracle Server X7-2L system BIOS where you can configure iSCSI settings:

- Advanced → iSCSI Configuration
- Advanced → Broadcom NetXtreme 25G Gigabit Ethernet → iSCSI Boot Configuration Menu

System iSCSI settings should be configured only in Advanced → iSCSI Configuration. Do not use the network adapter iSCSI configuration option to configure iSCSI settings for the system.

Power Cycle the Server After Changing the Disk Freeze Lock Option

Important Operating Note

A power cycle must be performed on the server after changing the Disk Freeze Lock option in the system BIOS. The Disk Freeze Lock option updates in the BIOS after you select Save & Exit in the BIOS Setup Utility, but the drive remains frozen/locked until a power cycle is performed.

RAID Setting Lost If You Update BIOS Without Preserving BIOS Configuration

Bug ID: 26437207

Issue: When you update BIOS without preserving the BIOS configuration, the PCH SATA Configuration reverts to the default setting, which is AHCI. If you configured the PCH SATA M.2 SSD as RAID and installed an OS on the SATA M.2 SSD before, the system hangs in the next boot.

Affected Software: System BIOS

Workaround: Open the BIOS Setup Utility and set the M.2 devices to RAID. In the BIOS Advanced > PCH SATA Configuration set **Configure SATA as** to RAID. Select **Save & Exit** in the BIOS Setup Utility to preserve the settings.

System BIOS Fast Boot Might Not Work Correctly When Updating System Software

Bug ID: 27146850

Issue: The System BIOS Fast Boot feature might not work correctly when updating to a new software release. This issue might occur when updating from system software release 1.0.2 to 1.1.x. This issue is benign and does not cause any problems during the software update.

Affected Software: System BIOS

Workaround: Do not preserve the BIOS configuration when updating to a new software release.

System BIOS Update Fails When Upgrading Oracle ILOM

Bug ID: 28301562

Issue: When upgrading from Oracle ILOM 4.0.3.22 to version 4.0.3.24, after you select "preserve BIOS config" for software 4.0.3.22, select "delay BIOS" after the software 4.0.3.24 bring up, and enter the `reset /System` command, the service processor (SP) does not force the host to power off and flash the BIOS to the newer version.

Affected Software: Oracle ILOM 4.0.3.24 and system BIOS

Workaround: When upgrading from Oracle ILOM 4.0.3.22 to version 4.0.3.24, select the "preserve BIOS config" and "no delay BIOS" options. If you choose to select the "delay BIOS" option, either power cycle or power off the host after the upgrade to flash the BIOS to a newer version.

Unable to Recover Boot Order After Setting `/HOST boot_device` in BIOS

Bug ID: 28540668

Issue: After installing a new operating system, when you move a boot device up in the Boot Options Device Priority List temporarily using the IPMItool or the Oracle ILOM command `set /HOST/ boot_device=pxe|disk`, the temporarily elevated boot

device will remain as the first boot device in the Boot Options Device Priority List in the BIOS Setup Utility. You will be unable to recover the previous original boot order.

Affected Software: Oracle ILOM 4.0.4.21 and system BIOS

Workaround:



Note:

Restore Defaults setting in the BIOS Setup Utility does not correct this issue.

Before starting the workaround, back up the BIOS configuration as an XML file, then use that XML file later to restore the BIOS configuration. For information refer to "Backing Up and Restoring Hardware and Firmware Configurations" in the *Oracle X7 Series Servers Administration Guide* at https://docs.oracle.com/cd/E23161_01/html/E75413/index.html

Option 1:

To avoid further effects from this issue, reset the BIOS to factory defaults using either the Oracle ILOM command-line interface (CLI) or web interface.

From the CLI:

Type:

```
- > cd /System/BIOS
- > set reset_to_defaults=factory
Set 'reset_to_defaults' to 'factory'
```

Wait until `/System/BIOS reset_to_defaults` changes from `factory` to `none`. The `reset_to_defaults` value reverts back to `none` after the factory default settings have been applied to the host BIOS.

From the web interface:

1. Navigate to System Management → BIOS.
2. In the Reset Defaults To Factory list box, select **Factory**.
3. Click Save to save the settings.

Option 2:

After installing a new operating system, update Oracle ILOM using the CLI or web interface without preserving the BIOS configuration.

For more information about updating Oracle ILOM without preserving the BIOS configuration, refer to the "Backing Up, Restoring, or Resetting the Oracle ILOM Configuration in the *Oracle ILOM Administrator's Guide for Configuration and Maintenance Firmware Release 4.0.x* at https://docs.oracle.com/cd/E81115_01 .

5

Oracle ILOM Issues

This section describes important operating notes and known Oracle ILOM issues for Oracle Server X7-2L.

For updated information about Oracle ILOM, refer to the latest Oracle ILOM documents at [Servers Documentation - Systems Management](#).

- [Oracle ILOM Command Force Stop of PCIe Slot Power Can Cause Server PCIe Bus Error](#)
- [DIMM Fault SPX86A-800A-95 - Memtest Single Symbol Test Failed - ILOM 5.1.0.21](#)
- [SSL Must Be Turned On When Booting a Redirected ISO Image](#)
- [Reset Takes a Long Time and Causes the Server to Power Cycle](#)
- [Deprecation Notice for Oracle ILOM IPMI 2.0 Management Service](#)
- [Resolving Warning Messages for Custom CA and Self-Signed SSL Certificates](#)
- [Changes to TLSv1.1 Configuration Property as of ILOM 4.0.3.x](#)

Oracle ILOM Command Force Stop of PCIe Slot Power Can Cause Server PCIe Bus Error

Bug ID: 334503411

Issue: SW3.3.3 Enterprise Oracle ILOM build02: 5.1.0.23_r146986 Enhancement 34371396 implements CLI command `stop /SYS/MB/PCIEn`. Use of the `stop /SYS/MB/PCIEn` command can cause some Smart NIC PCIe cards to stop operation and the system may report a PCIe bus error. Systems with this firmware enhancement should not need to use this command if they do not have any Cavium LiquidIO III 100 Gb Network Interface Card (NIC)s installed in PCIe slots. If not resetting Smart NIC Add-In Card (AIC) PCIe slots, avoid using the `stop /SYS/MB/PCIEn` command on PCIe slots and cards unless instructed by Oracle Service personnel.

1. When host power is off, you can start any PCIe slot power with the `start /SYS/MB/PCIEn` command and stop any PCIe slot power with the `stop /SYS/MB/PCIEn` command without PCIe bus errors.

```
-> stop /SYS/MB/PCIEn#  
-> start /SYS/MB/PCIEn#
```

2. **Note:** When host power is on, you can add use the `-force` option to force stop/start PCIe slot power. But there is a risk of causing system and PCIe bus errors.

Before using the `-force` option to force stop or force start PCIe slot power, ensure the following preconditions.

- a. Verify that the UEFI BIOS has already enabled the PCIe slot hotplug feature.
- b. Verify that the OS is Linux UEK4 or UEK5, and the Cavium LiquidIO III 100 Gb Network Interface Card (NIC) remote console is idle.

- c. Shutdown PCIe communication/data traffic for the slot with the installed Cavium LiquidIO III 100 Gb Network Interface Card (NIC).
3. Use these actions only for the PCIe slot when installing Cavium LiquidIO III 100 Gb Network Interface Card (NIC)s when host power is on.

```
-> stop -force /SYS/MB/PCIE#
-> start -force /SYS/MB/PCIE#
```

Cavium LiquidIO III 100 Gb Network Interface Card (NIC) may require start/stop power cycles without affecting other AIC cards using the `-force` option to start or stop PCIe slot power when server host main power is on. For all other AIC cards installed in system configurations, exercise caution when using the `stop /SYS/MB/PCIE#` command to force to start/stop PCIe slot power. Using force stop on Oracle Flash Accelerator F640 PCIe Cards and Oracle Quad Port 10GBase-T Adapters installed in PCIe slots may result in PCIe bus issues. Refer to Enhancement 34371396 for details.

Example of force stop command that may cause a reset:

```
-> stop /SYS/MB/PCIE8
Are you sure you want to stop /SYS/MB/PCIE8 (y/n)? y
stop: Operation is not allowed when Host power is on.
-> stop -f /SYS/MB/PCIE8
Are you sure you want to immediately stop /SYS/MB/PCIE8 (y/n)? y
Stopping /SYS/MB/PCIE8 immediately

-> ls
/SYS/MB/PCIE8
Targets:          POWER          PRSNT          SERVICE
Properties:      type = PCIE Module          fault_state = OK
                  clear_fault_action = (none)          power_state = Off
Commands:      cd          reset          set          show          start          stop
-> show faulty
Target
Property | Value
-----+-----+-----
-> show /sp/logs/event/list/
Event
ID      Date/Time          Class          Type          Severity
-----+-----+-----+-----+-----
324      Wed Aug 10 06:41:56 2022  Chassis      State         minor
          /SYS/MB/PCIE8 power is disabled
323      Wed Aug 10 06:41:51 2022  Power        Off           major
          Power to /SYS/MB/PCIE8 has been turned off by: Shell session,
Username:
322      Wed Aug 10 05:23:51 2022  IPMI         Log           minor
          ID = 131 : 08/10/2022 : 05:23:51 : System Firmware Progress : BIOS :
System boot initiated : Asserted
```

Affected Hardware: Oracle Server X9-2, Oracle Server X9-2L, Oracle Server X7-2, Oracle Server X7-2L

Affected Software:

x86 server software Oracle ILOM releases or later: SW3.3.3 Enterprise ILOM build02: 5.1.0.23_r146986, BIOS: 42120100

Oracle Server X9-2, Oracle Server X9-2L, Oracle Server X7-2, Oracle Server X7-2L

For details, refer to Oracle Integrated Lights Out Manager (ILOM) documentation at [Systems Management Documentation](#).

Workaround: Use Oracle ILOM CLI command `stop /SYS/MB/PCIEn` only for Cavium LiquidIO III 100 Gb Network Interface Card (NIC) slot required start/stop power cycles. Do not use Oracle ILOM CLI command `stop /SYS/MB/PCIEn` for any other purpose unless instructed by Oracle Service personnel.

Oracle Service personnel can find more information about x86 servers at [My Oracle Support](#). Refer to Oracle ILOM update *Enh 34371396 - Added --force to start/stop PCIe slot power*.

DIMM Fault SPX86A-800A-95 - Memtest Single Symbol Test Failed - ILOM 5.1.0.21

Bug ID: 34325538, 34445460

Issue: The following DIMM Fault message is seen: SPX86A-800A-95 - Memtest Single Symbol Test Failed (Doc ID 2317012.1) SPX86A-800A-95 indicates that the ILOM fault manager has received an error report indicating a memory DIMM produced correctable errors (CE) during both passes of the memory test.

If the server encounters multiple runtime memory fault related events, increased runtime error messages may be related to DIMM memory testing conditions. Oracle ILOM Adaptive Double DRAM Device Correction (ADDDC) and Post Package Repair (PPR) features are enabled in the server firmware. ADDDC Sparing is a RAS feature to test memory reliability. The Advanced Memory Test (AMT) in the Memory Reference Code (MRC) can fail a DIMM with a single symbol error and then PPR would try to repair the defect.

When enabled, PPR may be able to repair affected DRAM areas on a DIMM. PPR runs when ADDDC was previously activated before reboot or MRC initialization failed memory tests. Upon encountering any memory related fault event during MRC initialization or experiencing certain memory correctable events during runtime that triggers ADDDC on first occurrence, then PPR would be activated after the next system initialization/reboot and attempt to repair the DIMM.

Note:

Certain DIMM manufacturers may exhibit different memory failure patterns, and may not support soft PPR configuration (which enables temporarily attempting a repair action).

Affected Hardware: Oracle Server X9-2, Oracle Server X9-2L, Oracle Server X8-8, Oracle Server X8-2, Oracle Server X8-2L, Oracle Server X7-8, Oracle Server X7-2, Oracle Server X7-2L

Note:

Not all server systems enable ADDDC.

Affected Software:

The following x86 server software Oracle ILOM releases or later, support PPR (Post-Package Repair).

- Oracle Server X9-2 SW1.1.0 ILOM 5.0.2.21 (Does not enable ADDDC.)
- Oracle Server X9-2L SW1.1.0 ILOM 5.0.2.21 (Does not enable ADDDC.)
- Oracle Server X8-8 SW3.2.2.1 ILOM 5.0.2.22 (Does not enable ADDDC.)
- Oracle Server X8-2 SW3.2.2 ILOM 5.0.2.24
- Oracle Server X8-2L SW3.2.2 ILOM 5.0.2.24
- Oracle Server X7-8 SW3.2.2.1 ILOM 5.0.2.22 (Does not enable ADDDC.)
- Oracle Server X7-2 SW3.2.2 ILOM 5.0.2.24
- Oracle Server X7-2L SW3.2.2 ILOM 5.0.2.24

Workaround: Some DIMM faults are recoverable errors if PPR is enabled on the server. If multiple DIMM memory errors are detected on the server:

1. Log in to the Oracle ILOM command-line interface (CLI) using an account with admin (a) role privileges.
2. From the Oracle ILOM CLI, launch the Oracle ILOM Fault Management Shell.


```
-> start /SP/faultmgmt/shell
Are you sure you want to start /SP/faultmgmt/shell (y/n)? y
```
3. Display information about server components using Oracle ILOM FMA CLI command.


```
faultmgmtsp> fmadm faulty
```
4. Manually clear server faults using Oracle ILOM FMA CLI command.


```
faultmgmtsp> fmadm repair <FRU>
```
5. Exit the Oracle ILOM Fault Management Shell and return to the the Oracle ILOM CLI command prompt.


```
faultmgmtsp> exit
```
6. Upgrade the server to the latest ILOM/UEFI firmware release that supports PPR. The system resets during the firmware upgrade and runs memory tests again.
7. If memory related events faults continue to be logged, replace the faulted DIMMs in the server. Log an Oracle Support case through the support portal for further assistance.

For updated information about Oracle ILOM, refer to Oracle Integrated Lights Out Manager (ILOM) documentation at [Servers Documentation - Systems Management](#).

Oracle Service personnel can find more information about the diagnosis and triage of DIMM Fault failures on x86 servers at [My Oracle Support](#). Refer to the Knowledge Article Doc ID 2698328.1. If there are multiple, simultaneous DIMM Fault message problems on a server, Oracle Service personnel can refer to Knowledge Articles Doc IDs 1603015.1 (KA single symbol error) and 2317012.1 (KA multiple symbol errors).



Note:

Adaptive Double DRAM Device Correction (ADDDC) is also referred to as Adaptive Device Correction (ADC) in some Oracle documents.

SSL Must Be Turned On When Booting a Redirected ISO Image

Important Operating Note

When booting a redirected ISO image for an operating system installation, SSL (Secure Sockets Layer) must be turned on. This is the default setting. If SSL is not turned on, the installation might stall or fail. This affects all supported operating systems.

Reset Takes a Long Time and Causes the Server to Power Cycle

Important Operating Note

If you have a pending BIOS upgrade, a routine reset takes longer than expected, and causes the server to power cycle and reboot several times. This is expected behavior, as it is necessary to power cycle the server to upgrade the BIOS firmware. If the upgrade includes an FPGA update, it can take more than 30 minutes to complete the upgrade, and the service processor (SP) resets during the process. Since the SP resets during the process, you will need to reestablish any active connection to the SP after the update.

A pending BIOS upgrade exists when the following conditions are true:

- You update the BIOS and service processor firmware using Oracle Integrated Lights Out Manager (ILOM).
- You select the Oracle ILOM option to Delay BIOS Upgrade.
- The host is powered on.

If you then reboot the server expecting a routine server reset and instead initiate a (delayed) BIOS upgrade, wait until the upgrade is finished. Do not interrupt the process, as this can result in corrupted firmware and server down time.



Caution:

Firmware Data corruption and system downtime. Interrupting the firmware upgrade process can corrupt the firmware and render the server inoperable. Do not interrupt the upgrade. Allow the process to finish.



Note:

Oracle ILOM and BIOS updates are designed to work together. When you have a pending BIOS upgrade, it is recommended that you install the upgrade by resetting or power cycling your server as soon as possible.

For details, refer to “Update the BIOS and Service Processor Firmware (Oracle ILOM)” in the *Oracle X7 Series Servers Administration Guide* at <https://www.oracle.com/goto/x86adminddiag/docs>.

Deprecation Notice for Oracle ILOM IPMI 2.0 Management Service

Important Operating Note

Present Behavior: IPMI 2.0 Management Sessions - **Enabled** (default setting).

Future Behavior: The following IPMI Management Service changes will occur in a future Oracle ILOM firmware release after firmware version 4.0.2.

- **First IPMI Service Support Change** – The default configuration property for IPMI 2.0 Sessions will change from Enabled to Disabled. Clients relying on Oracle ILOM IPMI 2.0 session support by default will no longer be able to communicate with Oracle ILOM. To enable IPMI communication with Oracle ILOM, perform one of the following:
 - Use the Oracle IPMI TLS service and interface. For more information, refer to “IPMI TLS Service and Interface” in the *Oracle ILOM Protocol Management Reference SNMP and IPMI Firmware Release 4.0.x*.
 - or
 - Manually enable the configuration property for IPMI 2.0 Session. For details, refer to “IPMI Service Configuration Properties” in the *Oracle ILOM Administrator’s Guide for Configuration and Maintenance Firmware Release 4.0.x*.
- **Second IPMI Service Support Change** – Removal of IPMI 2.0 client support. IPMI 2.0 clients no longer will be able to communicate with Oracle ILOM. Clients relying on IPMI communication will need to use the IPMI TLS service and interface. For more information, refer to “IPMI TLS Service and Interface” in the *Oracle ILOM Protocol Management Reference SNMP and IPMI Firmware Release 4.0.x*.

For future updates about IPMI Management Service support in Oracle ILOM, refer to the latest firmware release information published in the *Oracle ILOM Feature Updates and Release Notes Firmware Release 4.0.x*. You can access the Oracle ILOM documents at <https://www.oracle.com/goto/ilom/docs>.

Resolving Warning Messages for Custom CA and Self-Signed SSL Certificates

Important Operating Note

The following information applies to users of the Oracle ILOM Remote System Console and the Oracle ILOM Remote System Console Plus.

A warning message occurs when the Java client is not properly configured to validate the Secure Sockets Layer (SSL) certificate that is currently being used by Oracle ILOM. This validation behavior applies to Oracle ILOM firmware version 3.2.8 or later for systems using the default self-signed SSL certificate, and to Oracle ILOM firmware

version 3.2.10 and later for systems using a Custom Certification Authority (CA) SSL certificate.

To resolve the SSL warning message, refer to the following applicable sections in the *Oracle ILOM Administrator's Guide for Configuration and Maintenance Firmware Release 4.0.x*, which is available at <https://www.oracle.com/goto/ilom/docs> :

- “Warning Messages for Self-Signed SSL Certificate”
- “Resolving Warning Messages for Custom Certification Authority (CA) SSL Certificate”

Changes to TLSv1.1 Configuration Property as of ILOM 4.0.3.x

Important Operating Note

Present Behavior: The Oracle ILOM TLSv1.1 configuration property is Enabled by default.

Future Behavior: The following changes will occur to the TLSv1.1 configuration property sometime after the Oracle ILOM 4.0.3 firmware release:

- First Change: The TLSv1.1 configuration property will default to Disabled in the next minor release of Oracle ILOM.
- Second Change: The TLSv1.1 configuration property will no longer be supported and will be removed from all Oracle ILOM user interfaces in the next major release of Oracle ILOM.

For future updates regarding TLSv1.1 support in Oracle ILOM, refer to latest release information in the *Oracle ILOM Feature Updates and Release Notes for Firmware 4.0.x* at https://docs.oracle.com/cd/E81115_01/index.html .

6

Oracle Solaris Issues

This section describes important operating notes and known Oracle Solaris operating system issues for Oracle Server X7-2L.

- [Oracle Solaris Installation Hangs When Remote KVMs Is Running](#)

Oracle Solaris Installation Hangs When Remote KVMs Is Running

Bug ID: 25653304

Issue: The Oracle Solaris 11.3 OS installer hangs while scanning for an active VGA frame buffer.

Affected Software: Oracle Solaris 11.3

Workaround: Perform the Oracle Solaris 11.3 OS installation from the system serial console:

1. Start an Oracle ILOM serial console session, type:
-> start /HOST/console
Are you sure you want to start /HOST/console (y/n)? y
2. Boot the system and select the `ttya` option in the GRUB boot menu.

 **Note:**

Depending on your terminal type, it might be necessary to press the ESC key before pressing the up or down arrow to stop the GRUB countdown timer. This will then allow you to select `ttya` in the GRUB menu.

For example:

```
GNU GRUB version 1.99,5.11.0.175.3.0.0.30.0

Oracle Solaris 11.3.23.4.0
Oracle Solaris 11.3.23.4.0 ttya
Oracle Solaris 11.3.23.4.0 ttyb
Entry [Boot from Hard Disk] not supported on this firmware
```

Use the ^ and v keys to select which entry is highlighted.
Press enter to boot the selected OS, 'e' to edit the commands before booting or 'c' for a command-line.

7

Linux Issues

This section describes important operating notes and known Linux operating system issues for Oracle Server X7-2L.

- [Perform a Yum Update When Using UEK Kernel](#)
- [Linux MMIO Kernel Configuration Can Affect Oracle Hardware Management Pack fwupdate Tool for Intel NIC/LOM Updates](#)
- [Installing Oracle Linux 7 Update 3 on an NVMe Storage Device Larger Than 2 TB Might Fail](#)

Perform a Yum Update When Using UEK Kernel

Important Operating Note

When using the Unbreakable Enterprise Kernel (UEK) with Oracle Linux 6 or Oracle Linux 7, you should perform a Yum update to obtain the latest UEK R4 release updates. Oracle Server X7-2L requires kernel version 4.1.12-94.5.7 or later.

For more information and instructions for updating the UEK for Oracle Linux, refer to the Unbreakable Enterprise Kernel web site at: http://docs.oracle.com/cd/E93554_01/.

Linux MMIO Kernel Configuration Can Affect Oracle Hardware Management Pack fwupdate Tool for Intel NIC/LOM Updates

Important Operating Note

On systems running Linux with Intel network interface cards or LAN-on-Motherboard (LOM) controllers, if MMIO memory access is set to strict access in the Linux kernel (iomem=strict or as part of the kernel build configuration) you will see the following message in syslog/dmegg when running the Oracle Hardware Management Pack fwupdate tool:

```
kernel: Program fwupdate tried to access /dev/mem between  
c4a00000->c4a01000. (Address may vary)
```

This message is expected and should not cause an issue with the operation of the operating system. There will be one message each time fwupdate is run and the kernel is in strict MMIO access mode.

However, when the kernel is running in this mode, fwupdate will not be able to access Intel-based network controllers to either list information or update firmware.

For more information on this issue including a workaround, see the "Linux MMIO Access Settings Can Affect fwupdate Commands On Intel Network Controllers" section in the *Oracle Hardware Management Pack 2.4 Server CLI Tools User's Guide* at: <https://www.oracle.com/goto/ohmp/docs>.

Installing Oracle Linux 7 Update 3 on an NVMe Storage Device Larger Than 2 TB Might Fail

Bug ID: 25702796

Issue: When installing Oracle Linux 7 Update 3 on a system with an NVMe storage device (either a storage drive or add-in PCIe card) with larger than 2 TB capacity, the install might fail due to a Linux kernel panic. This might appear during install as a stack trace on the console. The install process will hang without warning or any other symptom, and the installation will not complete.

Affected Software: Oracle Linux 7 Update 3

Workaround: To avoid this panic during the install, select manual partitioning when configuring the NVMe device storage and ensure that any partition larger than 2 TB in size uses the ext4 file system instead of XFS. If you do an automated install using a kickstarter configuration file, ensure your storage partitions on NVMe devices use the ext4 file system, if the partitions are larger than 2 TB in size.

8

Windows Issues

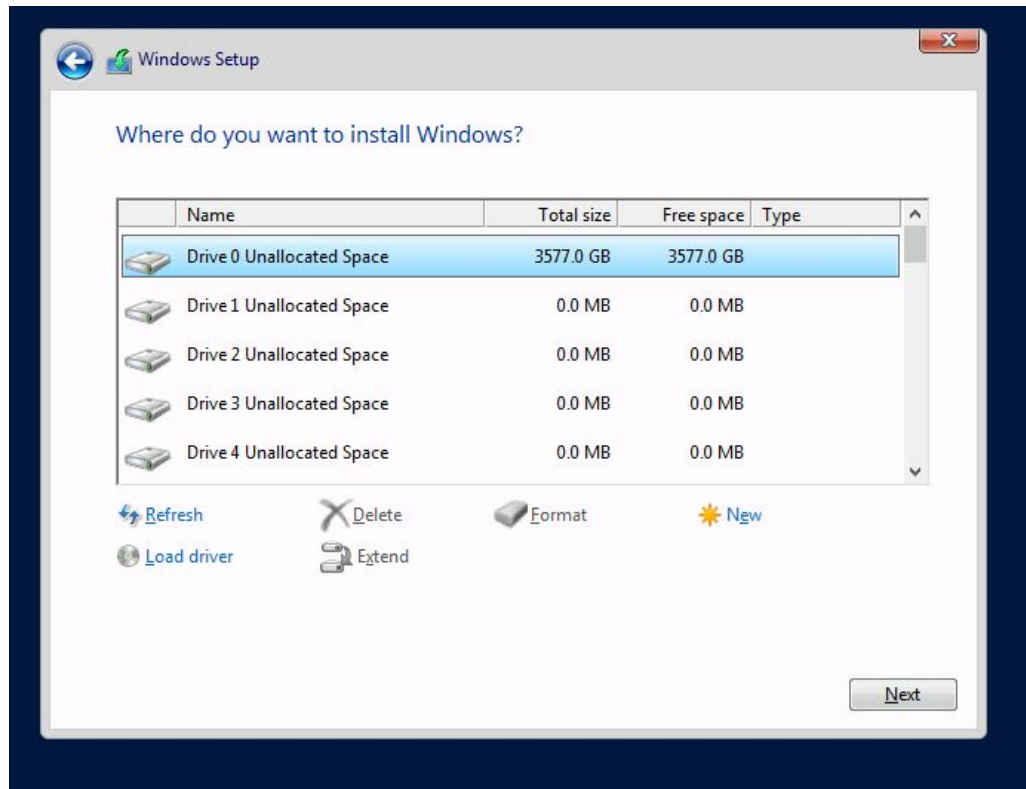
This section describes important operating notes and known Windows Server operating system issues for Oracle Server X7-2L.

- [NVMe Phantom Drives Appear When Using Windows Server 2016 Inbox Drivers](#)
- [NVMe Hot Plug Is Not Supported](#)
- [Updated Driver Is Required to iSCSI Boot Windows Server Using Intel i210 Gigabit Ethernet Connection](#)

NVMe Phantom Drives Appear When Using Windows Server 2016 Inbox Drivers

Bug ID: 32158109

Issue: During Windows Server 2016 installation on a system with an NVMe storage drive, Windows Setup lists the NVMe storage device and 127 phantom listings of the same NVMe storage device. These phantom storage devices each show a total size and free space of 0.0 MB. For example:



After you install Windows Server 2016, the 127 phantom drives also appear in Windows Device Manager. This issue is due to an out-of-date inbox Windows Server 2016 NVMe driver that does not support the multiple namespace feature of some NVMe storage devices.

Affected Software: Microsoft Windows Server 2016, version 1607 (OS build 14393.3986).

Affected Hardware: Any system with NVMe storage drives that supports multiple namespaces.

Workaround: After Windows Server 2016 is installed, perform a Microsoft Windows Update. A newer version of the Windows Server 2016 NVMe driver installs and corrects the issue. After the update, the phantom drives are no longer listed for your NVMe storage device.

NVMe Hot Plug Is Not Supported

Important Operating Note

NVMe storage drives are supported by the Microsoft Windows Server 2012 R2 and Windows Server 2016 operating systems. However, NVMe hot plug is not supported on Oracle Server X7-2L under Windows Server 2016 and Windows Server 2012 R2. You must power down the system before removing and replacing NVMe storage drives.

For more information, refer to *Servicing Storage Drives (CRU)* in *Oracle Server X7-2L Service Manual*.

Updated Driver Is Required to iSCSI Boot Windows Server Using Intel i210 Gigabit Ethernet Connection

Bug ID: 25534023

Issue: There is a mismatch between the inbox Intel i210 Gigabit Ethernet driver used during Windows Server setup and the inbox Intel i210 Gigabit Ethernet driver used in the Windows Server operating system. When performing an iSCSI installation using the Intel i210 Gigabit Ethernet connection, the driver mismatch results in a failure to boot the installed Windows Server OS.

Affected Software: Microsoft Windows Server 2012 R2 and Windows Server 2016

Workaround: You must install one of the following newer drivers during server setup:

- Windows Server 2012 R2 driver INF file: `e1r64x64.inf`
- Windows Server 2016 driver INF file: `e1r65x64.inf`

These driver files are located in `\windows\drivers\Intel-NIC-1gbe`.

9

VMware ESXi Issues

This section lists important operating notes and known VMware ESXi issues for Oracle Server X7-2L.

- [VMware ESXi 6.5 U1 Does Not Include Driver for Oracle Dual Port 25 Gb Ethernet Adapter](#)

VMware ESXi 6.5 U1 Does Not Include Driver for Oracle Dual Port 25 Gb Ethernet Adapter

Important Operating Note

VMware ESXi 6.5 U1 does not include the driver for the Oracle Dual Port 25 Gb Ethernet Adapter. To use this adapter with Oracle Server X7-2L, you must download the driver from the VMware Drivers and Tools web site at: https://my.vmware.com/web/vmware/info/slug/datacenter_cloud_infrastructure/vmware_vsphere/6_5/drivers_tools . Select Driver CDs and download the VMware ESXi 6.5 bnxtnet 20.6.302.0 NIC Driver CD for Broadcom NetXtreme-C/E BCM573xx/BCM574xx driver.

10

Documentation Issues

This section describes known documentation issues for Oracle Server X7-2L.

- [Updates for the Oracle Servers X7-2 and X7-2L Installation Guide](#)
- [Updates for the Oracle Server X7-2L Service Manual](#)
- [Linux Nomenclature](#)

Updates for the Oracle Servers X7-2 and X7-2L Installation Guide

In the *Oracle Servers X7-2 and X7-2L Installation Guide* (E72440-01) that was published on the Oracle Documentation web site, the document provided incorrect information in the following sections.

- [Server Components](#)
- [Entire Document](#)

Server Components

The Server Components table states that PCIe slots 1 through 6 are nonfunctional in single-processor systems for Oracle Server X7-2L. This is incorrect. PCIe slots 1 through 5 are nonfunctional in single-processor systems for Oracle Server X7-2L.

This correction has been made in subsequent releases of the Installation Guide (E72440-02 and later).

Entire Document

- The On/Standby button is incorrectly referred to as the Power button within the document.
- The NET 0 Ethernet port speed is incorrect for Oracle Server X7-2 and X7-2L. The NET 0 Ethernet port speed should be 100/1000BASE-T.

These corrections have been made in subsequent releases of the Installation Guide (E72440-07 and later).

Updates for the Oracle Server X7-2L Service Manual

In the *Oracle Server X7-2L Service Manual* (E72474-01) that was published on the Oracle Documentation web site, the document provided incorrect information in the following sections.

- [Populating DIMMs for Optimal System Performance](#)
- [DIMM Operating Speeds](#)

- [Removing and Replacing an NVMe Storage Drive Using Oracle Linux](#)
- [Install NVMe Cables](#)
- [Install a Processor](#)
- [Entire Document](#)
- [DIMM and Processor Physical Layout](#)
- [Network Management Port Status Indicators](#)
- [Ethernet Port Status Indicators](#)

Populating DIMMs for Optimal System Performance

The first two bullets in the population guidelines are incorrect. They should be replaced with the following corrected content:

- In single-processor systems, populate DIMMs of the same size in multiples of six.
- In dual-processor systems, populate DIMMs of the same size in multiples of twelve.

This correction has been made in subsequent releases of the Service Manual (E72474-02 and later).

DIMM Operating Speeds

The information in this section is incorrect and should be replaced with the following corrected content:

The maximum supported memory speed is 2667 MT/s. However, not all system configurations will support operation at this speed. The maximum attainable memory speed is limited by the maximum speed supported by the specific type of processor. All memory installed in the system operates at the same speed, or frequency.

This correction has been made in subsequent releases of the Service Manual (E72474-02 and later).

Removing and Replacing an NVMe Storage Drive Using Oracle Linux

The information in the following steps in "Verify Removal of an NVMe Storage Drive" is incorrect and should be replaced with the following corrected content:

- **Step 1:** To check the NVMe drive enumeration to verify that NVMe drive has been removed, type:

```
# lspci -nnd :0a54
```
- **Step 2:** View the command output and verify that the entry for the slot number that was disabled no longer appears.

This commands returns output similar to the following:

```
86:00.0 Non-Volatile memory controller [0108]: Intel Corporation Device [8086:0a54]
8d:00.0 Non-Volatile memory controller [0108]: Intel Corporation Device [8086:0a54]
d9:00.0 Non-Volatile memory controller [0108]: Intel Corporation Device [8086:0a54]
```

e0:00.0 Non-Volatile memory controller [0108]: Intel Corporation Device [8086:0a54]

This correction has been made in subsequent releases of the Service Manual (E72474-04 and later).

Install NVMe Cables

The information in the Note in Step 2 is incorrect and should be replaced with the following corrected content:



Note:

NVMe cable assembly, part numbers 7345517 (long NVMe cable) and 7345518 (short NVMe cable) are required to connect Oracle PCIe NVMe switch cards to the disk backplane.

The information in the NVMe cable connections table in Step 3 is incorrect and should be replaced with the following corrected content:

| Oracle PCIe NVMe Slot Location and Cable Part Number | HBA Connector | Disk Backplane Connector | Physical Storage Drive Slots |
|--|---------------|--------------------------|------------------------------|
| 3 (7345518) | 1 | D | 2 |
| | 2 | E | 6 |
| | 3 | F | 10 |
| 4 (7345517) | 1 | A | 3 |
| | 2 | B | 7 |
| | 3 | C | 11 |
| 8 (7345517) | 1 | A | 1 |
| | 2 | B | 5 |
| | 3 | C | 9 |
| 9 (7345518) | 1 | D | 0 |
| | 2 | E | 4 |
| | 3 | F | 8 |

This correction has been made in subsequent releases of the Service Manual (E72474-04 and later).

Install a Processor

The information in the following steps has been updated and replaced with the following corrected content:

- **Step 3:** Use the syringe supplied with the new or replacement processor [1] to apply 0.3 cc of thermal interface material (TIM) in an "X" pattern to the processor contact area of the heatsink [2].

- **Step 4f:** Using a 12.0 in-lbs (inch-pounds) torque driver (part number 7352217) with a Torx T30 bit, tighten the processor-heatsink module to the socket. First, fully tighten captive nuts 1 and 2. Then fully tighten nuts 3 and 4 [2].

This correction has been made in subsequent releases of the Service Manual (E72474-05 and later).

Entire Document

The NET0 Ethernet port speed is incorrect. The NET0 Ethernet port speed should be 100/1000BASE-T.

This correction has been made in subsequent releases of the Service Manual (E72474-10 and later).

DIMM and Processor Physical Layout

This section should include the following memory channels table.

| Memory Channels | DIMM Slot 0 (Black) | DIMM Slot 1 (White) |
|-----------------|---------------------|---------------------|
| A | D6 | D7 |
| B | D8 | D9 |
| C | D10 | D11 |
| D | D5 | D4 |
| E | D3 | D2 |
| F | D1 | D0 |

This table has been added in subsequent releases of the Service Manual (E72474-10 and later).

Network Management Port Status Indicators

The location information for the Activity and Link Speed status indicator locations are incorrect and should be replaced with the following corrected content.

| Status Indicator Name | Location |
|-----------------------|-----------|
| Activity | Top left |
| Link Speed | Top right |

This correction has been made in subsequent releases of the Service Manual (E72474-10 and later).

Ethernet Port Status Indicators

The location information for the Activity and Link Speed status indicator locations are incorrect and should be replaced with the following corrected content.

| Status Indicator Name | Location |
|-----------------------|-------------|
| Activity | Bottom left |

| Status Indicator Name | Location |
|-----------------------|--------------|
| Link Speed | Bottom right |

This correction has been made in subsequent releases of the Service Manual (E72474-10 and later).

Linux Nomenclature

In the *Oracle Servers X7-2 and X7-2L Operating Systems Installation Guide*, and in other Oracle Server X7-2 and X7-2L documents, Oracle Linux is incorrectly referred to as “Oracle Linux 7.3 with Unbreakable Enterprise Kernel Release 4 quarterly update 4 (UEKR4 QU4).” The correct nomenclature is Oracle Linux 7.3 with Unbreakable Enterprise Kernel Release 4 update 4 (UEK R4u4).

11

Software and Critical Patch Updates

This section includes important operating information and requirements for Oracle Server X7-2L.

- [Update Your System to the Latest Software Release](#)
- [Server Security, Software Releases, and Critical Patch Updates](#)
- [Important – Install Latest OS Updates, Patches, and Firmware](#)

Update Your System to the Latest Software Release

It is highly recommended that you update your system to the latest Software Release before you use the system. Software Releases often include bug fixes, and updating your system ensures that your server software is compatible with the latest server firmware and other component firmware and software.

You can download the latest Software Release, which includes firmware and software updates, from My Oracle Support at <https://support.oracle.com> . For information about downloading firmware and software from My Oracle Support, see [Getting Firmware and Software Updates](#).

Server Security, Software Releases, and Critical Patch Updates

To ensure continued security of your system, Oracle strongly recommends that you apply the latest Software Releases. Server Software Releases include Oracle ILOM, BIOS, and other firmware updates, often referred to as “patches.” Oracle publishes these patches regularly on the My Oracle Support site. Applying these patches will help ensure optimal system performance, security, and stability. You can identify the latest Software Release for your system at <https://www.oracle.com/servers/technologies/firmware/release-history-jsp.html> .

To download a Software Release, go to My Oracle Support at <https://support.oracle.com> .

Oracle notifies customers about security vulnerability fixes for all its products four times a year through the Critical Patch Update (CPU) program. Customers should review the CPU advisories to ensure that the latest Software Release updates are applied to their Oracle products. Note that updates for Engineered Systems will be specifically published for a specific Engineered Systems product (that is, you need not look at specific updates for individual software components included in your Engineered System). For more information about the Oracle CPU program, go to <https://www.oracle.com/security-alerts/> .

Oracle also recommends that you update to the latest operating system release when it becomes available. Although a minimum operating system release is supported, updating to the latest OS release will ensure that you have the most up-to-date software and security patches. To confirm that you have the latest OS release, refer to the Oracle Hardware Compatibility Lists or third-party operating system certification information. See [Supported Operating Systems](#).

For details about how to download the latest system software update, see [Getting Firmware and Software Updates](#).

Important – Install Latest OS Updates, Patches, and Firmware

Some product features are enabled only when the latest versions of operating system, patches, and firmware are installed. To retain optimal system performance, security, and stability, you must install the latest available operating system, patches, and firmware.

To verify the Oracle ILOM firmware version:

1. Use Oracle ILOM to verify the system firmware version.
 - From the web interface, click System Information → Summary, then view the property information for the System Firmware Version in the General Information table.
 - From the command-line interface, at the command prompt (->), type: `show / System/Firmware`

For more details, refer to information about viewing system information and inventory in your server Administration Guide, which is available at <https://www.oracle.com/goto/x86adminddiag/docs>.

2. Ensure that the firmware version is at the minimum required version, noted above, or a subsequent release, if available.
3. If the required firmware version (or newer) is not installed:
 - a. Download the latest Software Release from My Oracle Support at <https://support.oracle.com>.
For more information, see [Getting Firmware and Software Updates](#).
 - b. Install the downloaded firmware.

See [Update System Firmware Using Oracle ILOM](#).

Refer to the information about performing firmware updates in the *Oracle ILOM Administrators Guide for Configuration and Maintenance*, which is available at <https://www.oracle.com/goto/ilom/docs>. Ensure that you perform the preparatory steps described in that document before updating the firmware.

Note:

Occasionally after installing the firmware, the Oracle ILOM web interface cannot display the power state correctly on the power control page. To correct this problem, clear your browser cache before logging in to the Oracle ILOM web interface.

12

Getting Firmware and Software Updates

This section explains the options for accessing server firmware and software updates using My Oracle Support.

Customers are required to install the latest available operating system (OS), patches, and firmware versions for optimal system performance, security, and stability.

- [Firmware and Software Updates](#)
- [Firmware and Software Update Options](#)
- [Software Releases](#)
- [Getting Updates From My Oracle Support](#)
- [Download Firmware and Software Updates From My Oracle Support](#)
- [Update System Firmware Using Oracle ILOM](#)
- [Installing System Firmware Using Other Methods](#)
- [Downloading an OS or Software Applications](#)
- [Oracle Support](#)

Firmware and Software Updates

Firmware and software for your server are updated periodically. These updates are made available as software releases. The software releases are a set of downloadable files (patches) that include all available firmware, software, hardware drivers, tools, and utilities for the server. All of these files have been tested together and verified to work with your server.

You must update your server firmware and software as soon as possible after a new software release becomes available. Software releases often include bug fixes, and updating your server ensures that your server has the latest firmware and software. These updates will increase your system performance, security, and stability.

To determine which firmware version is installed on your server, you can use either the Oracle ILOM web interface or the command-line interface (CLI).

- From the web interface, click System Information → Summary, then view the property value for System Firmware Version in the General Information table.
- From the CLI, at the command prompt, type: `show /System/Firmware`

The server Product Notes list the current server software release and firmware version that are available.

Firmware and Software Update Options

Use one of the following options to update your server to the latest firmware and software:

- **My Oracle Support** – All system software releases are available from the My Oracle Support web site at <https://support.oracle.com>.

For information about what is available from the My Oracle Support web site, see [Software Releases](#).

- **Other Methods** – You can use Oracle Enterprise Manager Ops Center, Oracle Hardware Management Pack, or Oracle ILOM to update your server software and firmware.

For information, see [Installing System Firmware Using Other Methods](#).

Software Releases

Software releases on My Oracle Support are grouped by product family (such as Oracle Server), then the product (the specific server), and finally the software release version. A software release contains all the updated software and firmware for your server as a set of downloadable files (patches), including firmware, drivers, tools, or utilities, all tested together to be compatible with your server.

Each patch is within a zip file that contains set of firmware and software subdirectories and files, along with a ReadMe file. The ReadMe file provides information about the patch, such as what has changed since the prior software release and the bugs that have been fixed in the current release.

My Oracle Support provides the set of software releases for your server as described in the following table. You can obtain these software releases by downloading the files from My Oracle Support.

| Package Name | Description | When to Download This Package |
|---|---|---|
| X7-2L SW <i>release</i> – Firmware Pack | Contains all system firmware, including Oracle ILOM, BIOS, and option card firmware. | You need the latest firmware. |
| X7-2L SW <i>release</i> – OS Pack | Includes a package of all tools, drivers, and utilities for a specific OS. An OS Pack is available for each supported operating system version. Software includes Oracle Hardware Management Pack, LSI MegaRAID software, and any other optional software that Oracle recommends. For the Windows OS, the OS Pack also includes Intel Network Teaming and Install Pack. | You need to update OS-specific tools, drivers, or utilities. |
| X7-2L SW <i>release</i> – All Packs | Includes the Firmware Pack and all OS Packs. This pack does not include the Oracle VTS image. | You need to update a combination of system firmware and OS-specific software. |
| X7-2L SW <i>release</i> – Diagnostics | Includes Oracle VTS diagnostics image. | You need the Oracle VTS diagnostics image. |

Getting Updates From My Oracle Support

You can obtain updated firmware and software from the My Oracle Support web site at <https://support.oracle.com> . For instructions, see [Download Firmware and Software Updates From My Oracle Support](#).

Download Firmware and Software Updates From My Oracle Support

1. Go to the My Oracle Support web site: <https://support.oracle.com>.
2. Sign in to My Oracle Support.
3. At the top of the page, click the Patches & Updates tab.
The Patch Search pane appears at the right of the screen.
4. Within the Search tab area, click Product or Family (Advanced).
The Search tab area appears with search fields.
5. In the Product field, select the product from the drop-down list.
Alternatively, type a full or partial product name (for example, Oracle Server X7-2L) until a match appears.
6. In the Release field, select a software release from the drop-down list.
Expand the list to see all available software releases.
7. Click Search.
The Patch Advanced Search Results screen appears, listing the patches for the software release.
See [Software Releases](#) for a description of the available software releases.
8. To select a patch for a software release, click the patch number next to the software release version.
You can use the Shift key to select more than one patch.
A pop-up action panel appears. The panel contains several action options, including the ReadMe, Download, and Add to Plan options. For information about the Add to Plan option, click the associated button and select “Why use a plan?”.
9. To review the ReadMe file for this patch, click ReadMe.
10. To download the patch for the software release, click Download.
11. In the File Download dialog box, click the patch zip file name.
The patch for the software release downloads. The download is an archive zip file, which you must extract to find the directory containing the image .pkg file.

Update System Firmware Using Oracle ILOM

You can update Oracle ILOM system firmware while the host is powered on. The Oracle ILOM firmware image includes firmware for the service processor (SP, Oracle ILOM) and the server's host components (FPGAs). The Oracle ILOM firmware update goes into effect

immediately. However, the update of host components is deferred until the affected host is power cycled. Because Oracle ILOM can be updated while the host is powered on, this feature reduces the total system downtime.

Before You Begin

- Determine the Oracle ILOM firmware version currently installed on the system. At the Oracle ILOM prompt, type: `show /System/Firmware`
- Download the Firmware Pack (Patch) update from My Oracle Support.

Note:

This procedure uses the Oracle ILOM command-line interface to update the system firmware. You can also update system firmware using the Oracle ILOM web interface. For web interface instructions, refer to the Oracle ILOM documentation at <https://www.oracle.com/goto/ilom/docs>.

To update system firmware, follow these steps:

1. Notify Oracle ILOM SP users of the scheduled firmware update and ask them to close all client sessions until after the firmware update is complete. Do not perform any other Oracle ILOM tasks during the firmware update.
2. Navigate to the directory where you saved the FIRMWARE PACK (Patch) archive zip file.
3. Extract the FIRMWARE PACK files from the archive zip file.

When you extract the files, the `<image.pkg>` file is in the `Firmware/service-processor` directory.

For example:

```
% unzip p26981570_102_Generic.zip
Archive: 26981570_102_Generic.zip
creating Oracle_Server_X7-2-1.0.2.87665-FIRMWARE_PACK/Firmware/service-processor/
inflating: Oracle_Server_X7-2-1.0.2.87665-FIRMWARE_PACK/Firmware/service-processor/ILOM-4_0_0_28_r121827-ORACLE_SERVER_X7-2-rom.pkg
```

4. Review the README file that accompanies the firmware image to be aware of any special release notes or instructions.
5. Update the firmware using the Oracle ILOM command-line interface:

- a. Log in to Oracle ILOM with an account with Admin privileges.
- b. Load the firmware image from the stored location using the `load -source` command followed by the directory path to the firmware image you want to install. Type:

```
-> load -source protocol://server_IPAddress/<path_to_image>/<image.pkg>
```

Where *protocol* can be: `http`, `https`, `ftp`, `tftp`, `sftp`, `scp`

For example, if you are accessing the server through a tftp server with an IP address of 198.51.100.123 in a directory called `ilom/jdoe` and with the `<image.pkg>` named `firmware.pkg`, enter the following command:

```
-> load -source tftp://198.51.100.123/tftpboot/ilom/jdoe/  
firmware.pkg
```

The following information is displayed:

An upgrade takes several minutes to complete. Oracle ILOM will enter a special mode to load new firmware. No other tasks can be performed in Oracle ILOM until the firmware upgrade is complete and Oracle ILOM is reset.

You can choose to postpone the server BIOS upgrade until the next server power off. If you do not do that, you should perform a clean shutdown of the server before continuing.

c. Answer the following prompts:

```
Are you sure you want to load the specified file? y
```

```
Preserve existing SP configuration (y/n)? y
```

This prompt preserves your existing Oracle ILOM settings after the firmware update is complete.

```
Preserve existing BIOS configuration (y/n)? y
```

This prompt preserves your existing BIOS configuration settings after the firmware upgrade is complete.

```
Delay BIOS upgrade until the next poweroff or reset (y/n)? y
```

Answer "Y" (yes) to the Delay BIOS Upgrade question and, if the host is ON and there are host components to be updated, the host remains powered on and the host component updates are deferred until the next time the host powers off and powers on (next reset/reboot).

Answer "N" (no) to the Delay BIOS Upgrade question and, if the host is ON and there are host components to be updated, the host is forced OFF so that host component updates can be applied immediately. After Oracle ILOM reboots, the host is powered on automatically if it was forced off.

 **Note:**

If the server has a pending BIOS upgrade, the power reset could take longer to complete. This is expected behavior, as it is necessary to power cycle the server to upgrade the BIOS firmware. If the upgrade includes an FPGA update, the process can take as long as 26 minutes to complete.

d. Wait for the Oracle ILOM status message to confirm that the process is complete.

6. To verify that the updated firmware is installed, at the Oracle ILOM prompt, type:

```
-> show /System/Firmware
```

Installing System Firmware Using Other Methods

In addition to using Oracle ILOM, you can install firmware and software updates using one of the following methods:

- **Oracle Enterprise Manager Ops Center** – Use Oracle Enterprise Manager Ops Center to automatically download the latest firmware from Oracle and then install the firmware

onto one or more servers. Firmware updates can also be loaded manually into the Enterprise Controller.

For information, refer to the product information page at: <https://www.oracle.com/enterprise-manager/technologies/> . For documentation, refer to the Oracle Enterprise Manager Cloud Control Documentation Library at: <https://docs.oracle.com/en/enterprise-manager/related-products.html>

- **Oracle Hardware Management Pack** – Use the `fwupdate` CLI Tool in the Oracle Hardware Management Pack software to update firmware in the system.

For information, refer to the product information page at: <https://www.oracle.com/servers/technologies/hardware-management-pack.html> . For documentation, refer to the Oracle Hardware Management Pack Documentation Library at: <https://www.oracle.com/goto/ohmp/docs>

- **Oracle Integrated Lights Out Management (ILOM)**. For information, refer to the product information page at: <https://www.oracle.com/servers/technologies/integrated-lights-out-manager.html> . For documentation, refer to the Oracle Integrated Lights Out Manager (ILOM) 5.0 Documentation Library at: <https://www.oracle.com/goto/ilom/docs>

Downloading an OS or Software Applications

You can download an operating system (OS) or software applications for all licensed Oracle products from Oracle Software Delivery Cloud (formerly called Oracle eDelivery). Software is available in zip and ISO formats, which you can unzip or burn to DVDs, respectively. All of the download links on the Oracle Technology Network (OTN) point to the Software Delivery Cloud, making this site the authoritative source for all Oracle OS and application downloads. To access Oracle Software Delivery Cloud, go to <https://edelivery.oracle.com/osdc/faces/SoftwareDelivery> .

Oracle Support

If you need help getting firmware or software updates, or downloading a complete software application, you can call Oracle Support. Use the appropriate number from the Oracle Global Customer Support Contacts Directory at:

<https://www.oracle.com/support/contact.html>