

Oracle® Argus Unblinding

User's Guide

Release 8.1.1

E87521-01

September 2017

Oracle Argus Unblinding User's Guide Release 8.1.1

E87521-01

Copyright © 2016, 2017 Oracle and/or its affiliates. All rights reserved.

This software and related documentation are provided under a license agreement containing restrictions on use and disclosure and are protected by intellectual property laws. Except as expressly permitted in your license agreement or allowed by law, you may not use, copy, reproduce, translate, broadcast, modify, license, transmit, distribute, exhibit, perform, publish, or display any part, in any form, or by any means. Reverse engineering, disassembly, or decompilation of this software, unless required by law for interoperability, is prohibited.

The information contained herein is subject to change without notice and is not warranted to be error-free. If you find any errors, please report them to us in writing.

If this is software or related documentation that is delivered to the U.S. Government or anyone licensing it on behalf of the U.S. Government, then the following notice is applicable:

U.S. GOVERNMENT END USERS: Oracle programs, including any operating system, integrated software, any programs installed on the hardware, and/or documentation, delivered to U.S. Government end users are "commercial computer software" pursuant to the applicable Federal Acquisition Regulation and agency-specific supplemental regulations. As such, use, duplication, disclosure, modification, and adaptation of the programs, including any operating system, integrated software, any programs installed on the hardware, and/or documentation, shall be subject to license terms and license restrictions applicable to the programs. No other rights are granted to the U.S. Government.

This software or hardware is developed for general use in a variety of information management applications. It is not developed or intended for use in any inherently dangerous applications, including applications that may create a risk of personal injury. If you use this software or hardware in dangerous applications, then you shall be responsible to take all appropriate fail-safe, backup, redundancy, and other measures to ensure its safe use. Oracle Corporation and its affiliates disclaim any liability for any damages caused by use of this software or hardware in dangerous applications.

Oracle and Java are registered trademarks of Oracle and/or its affiliates. Other names may be trademarks of their respective owners.

Intel and Intel Xeon are trademarks or registered trademarks of Intel Corporation. All SPARC trademarks are used under license and are trademarks or registered trademarks of SPARC International, Inc. AMD, Opteron, the AMD logo, and the AMD Opteron logo are trademarks or registered trademarks of Advanced Micro Devices. UNIX is a registered trademark of The Open Group.

This software or hardware and documentation may provide access to or information about content, products, and services from third parties. Oracle Corporation and its affiliates are not responsible for and expressly disclaim all warranties of any kind with respect to third-party content, products, and services unless otherwise set forth in an applicable agreement between you and Oracle. Oracle Corporation and its affiliates will not be responsible for any loss, costs, or damages incurred due to your access to or use of third-party content, products, or services, except as set forth in an applicable agreement between you and Oracle.

Contents

Preface	v
Audience	v
Where to Find More Information	v
Documentation Accessibility	v
1 Using the Argus Unblinding Generic Software	
Logging into Argus Unblinding and Starting a Profile Configuration	1-1
Logging into a Multi-tenant Installation	1-3
Enterprise Short Name	1-4
Configuring a New Argus Unblinding Profile	1-4
Configuring a Study Definition	1-4
Loading Randomization Data	1-7
Mapping Treatment Codes to Study Products	1-8
Configuring Dosage	1-9
Copying Profiles	1-10
Modifying Profiles	1-11
Deleting Profiles	1-12
Executing the Argus Unblinding Profile	1-13
Error Messages	1-14
Error Message: Protocol Number Mismatch	1-14
Error Message: No SQL for Advanced Condition	1-15
Exception Report Messages	1-15
Using the Argus Unblinding Report Viewer	1-15
Exiting from Argus Unblinding	1-17
Uninstalling Client Software	1-17

Preface

This document describes the steps for installing and configuring the components of the Argus Safety Unblinding application.

Audience

This document is technical in nature and presents technical details about the processes it discusses. It assumes that you are a qualified ORACLE Database Administrator. We recommend reading the entire document before execution the Interface programs.

Where to Find More Information

Oracle Help Center

The latest user documentation for Oracle Health Sciences products is available at <http://docs.oracle.com/en/industries/health-sciences/>.

My Oracle Support

The latest release notes, patches and white papers are on My Oracle Support (MOS) at <https://support.oracle.com>. For help with using MOS, see https://docs.oracle.com/cd/E74665_01/MOSHHP/toc.htm.

Documentation Accessibility

For information about Oracle's commitment to accessibility, visit the Oracle Accessibility Program website at <http://www.oracle.com/pls/topic/lookup?ctx=acc&id=docacc>.

Access to Oracle Support

Oracle customers that have purchased support have access to electronic support through My Oracle Support. For information, visit <http://www.oracle.com/pls/topic/lookup?ctx=acc&id=info> or visit <http://www.oracle.com/pls/topic/lookup?ctx=acc&id=trs> if you are hearing impaired.

Using the Argus Unblinding Generic Software

This chapter provides information about using the Argus Unblinding generic software and includes discussions of the following:

- [Logging into Argus Unblinding and Starting a Profile Configuration](#)
- [Configuring a New Argus Unblinding Profile](#)
- [Copying Profiles](#)
- [Modifying Profiles](#)
- [Deleting Profiles](#)
- [Executing the Argus Unblinding Profile](#)
- [Using the Argus Unblinding Report Viewer](#)
- [Exiting from Argus Unblinding](#)

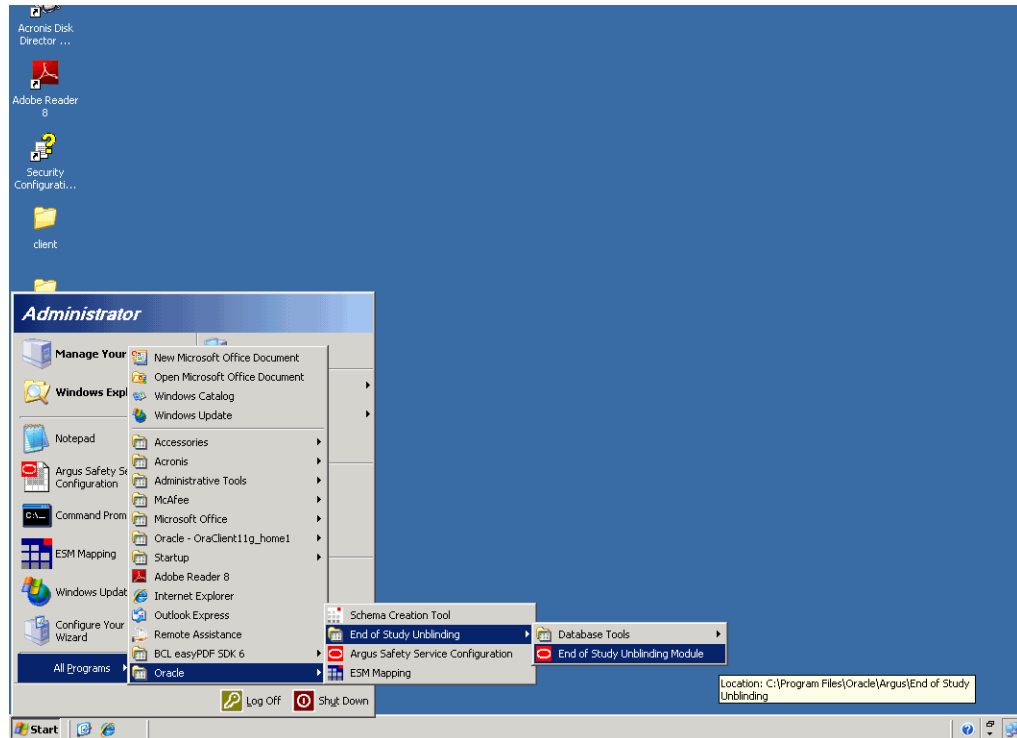
Logging into Argus Unblinding and Starting a Profile Configuration

You must have specific access rights before you can log in to the Argus Unblinding Application. If you have difficulty logging in to the application, consult your System Administrator to verify that you have the following:

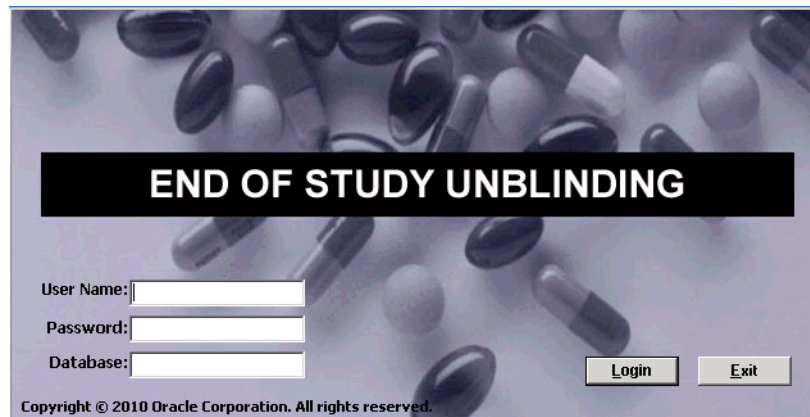
- Allow Closures of Cases access
- Allow Locking of Cases access
- Allow Unblinding of Cases access
- Membership in the End of Study Unblinding group

Use the following procedure to log in to Argus Unblinding:

1. Select **Start => Programs => Oracle => End of Study Unblinding**.



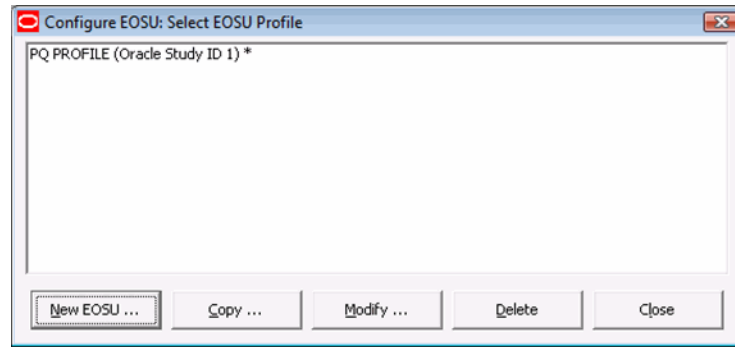
2. When the **log in** window opens:



- Enter the user name in the User Name field.
 - Enter the user password in the Password field.
 - Enter the name of the database where Argus Generic is installed in the Database field.
 - Click Login.
3. When the Argus Unblinding application opens, choose **Argus Unblinding=> Configure Argus Unblinding**.

Note: In a Multi-tenancy install, select Enterprise after the Argus Unblinding login screen. This does not appear in a single-tenancy install.

4. Argus Unblinding opens the **Configure Argus Unblinding: Select Argus Unblinding Profile** window.



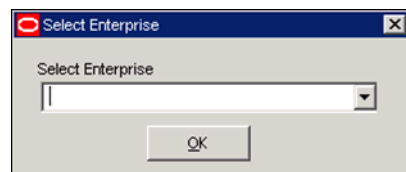
Note: An asterisk (*) next to a profile name indicates that the profile configuration is incomplete and cannot be executed.

- Click New Argus Unblinding to create a new Argus Unblinding profile.
- Click Copy to copy an existing Argus Unblinding profile.
- Click Modify to modify an existing Argus Unblinding profile.
- Click Delete to delete an existing profile.
- Click Close to close the current window.

Logging into a Multi-tenant Installation

When you log into the Argus Unblinding tool in a multi-tenant installation, a pop-up prompts you to choose the Enterprise for which the data is displayed in the Argus Unblinding tool.

- The drop-down menu in the following pop-up displays an alphabetically-sorted list of Enterprise Short Names for all the active Enterprises that the user has access to as “Enterprise User” in Console => User Management.



- The default value is blank when the pop-up initially displays.
- The OK button is only enabled when a non-blank value is selected.
- If you only have access to one Enterprise, the pop-up does not display and Argus Unblinding tool loads the data for that Enterprise automatically.

- If you are configured as an "Enterprise User", there are no active Enterprises, the system displays a message box with the OK button enabled, and the following message: "There are no active Enterprises for the User for the Argus Unblinding tool".

Note: Enterprise switching without re-login is not provided in the Argus Unblinding Tool. If you need to switch to a different Enterprise partition, you must logout and then login again for the other Enterprise.

Enterprise Short Name

The Argus Unblinding window header displays the Enterprise Short Name based on the **Display Enterprise Short Name in Application Header** option in common profile switches. If this option is not selected, the Argus Unblinding window header will not display the Enterprise Short Name and uses the existing following format:

Argus Unblinding [<User Full Name> Log on to <Database Name>]

If this option is selected, the Argus Unblinding window header appends the Enterprise Short Name along with the database name using a hyphen, as shown:

Argus Unblinding [<User Full Name> Log on to <Database Name> - <Enterprise Short Name>]

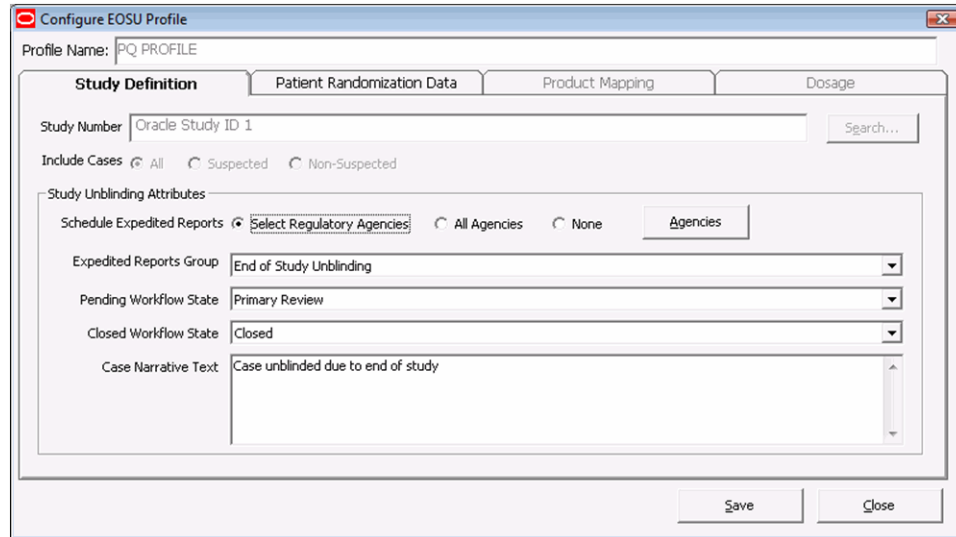
Configuring a New Argus Unblinding Profile

Configuring a new Argus Unblinding profile requires several procedures as follows:

- Configuring a Study Definition
- Loading Randomization Data
- Mapping Treatment Codes to Products
- Configuring Dosage Details for treatments and study projects

Configuring a Study Definition

You configure a study definition on the **Study Definition** tab of the **Configure Argus Unblinding Profile** dialog box. Table 4-1 lists the fields/controls on the tab and describes the function of each one.



The following table describes Study Definition Tab Fields and Controls:

Field/Control	Description
Study Number	Enables you to select a specific study. You can select a study only if the Study is eligible for Unblinding option is selected in Argus.
Include Cases	Restricts the selection of cases to All, Suspected, or Non-Suspected according to Case Assessment values for Causality.
Schedule Expedited Reports	Enables you to all/partial/no reporting rules for the case being unblinded.
Expedited Reports Group	Enables you to replace the group for all reports scheduled for this profile.
Pending Workflow State	Replaces the case state for all cases processed by this profile that have an unsubmitted report as part of the case.
Closed Workflow State	Defines the workflow state to be used for closed cases.
Case Narrative Text	Enables you to enter relevant information about the case.
Search...	Enables you to search for a particular study.
Agencies	This button is enabled only if the Select Regulatory Agencies option button has been selected.
Save	Enables you to save the profile.
Close	Enables you to close the profile.

If you select **Select Regulatory Agencies** in the **Schedule Expedited Reports** field when you are configuring a study definition, Argus Unblinding also displays the **Select Regulatory Agencies** dialog box. This dialog displays all the Reporting Rules in the Argus Application, grouped by Rule Country, Agency Country, Agency and the Report Form Name. The column headers can be stretched to make the column wider to display more data. Table 4-2 lists and describes the fields and controls in this dialog box.

- Type the study ID in the Study Number field.
 - Select the cases to include by clicking the appropriate option button in the Include Cases field.
 - Select the appropriate option button in the Schedule Expedited Reports field.
 - Select the appropriate group from the Expedited Reports Group drop-down list.
 - Select the workflow state from the Pending Workflow State drop-down list.
 - Select the workflow state for all closed cases from the Closed Workflow State drop-down list.
 - Type any relevant data in the Case Narrative Text field.
 - Click Save to save the Study Definition.
4. If you chose Select Regulatory Agencies in the Schedule Expedited Reports field in the preceding step, the system displays the Select Regulatory Agencies dialog box.
- Click in the appropriate checkboxes to select one or more Agency/Rule.
 - Click Save.

Loading Randomization Data

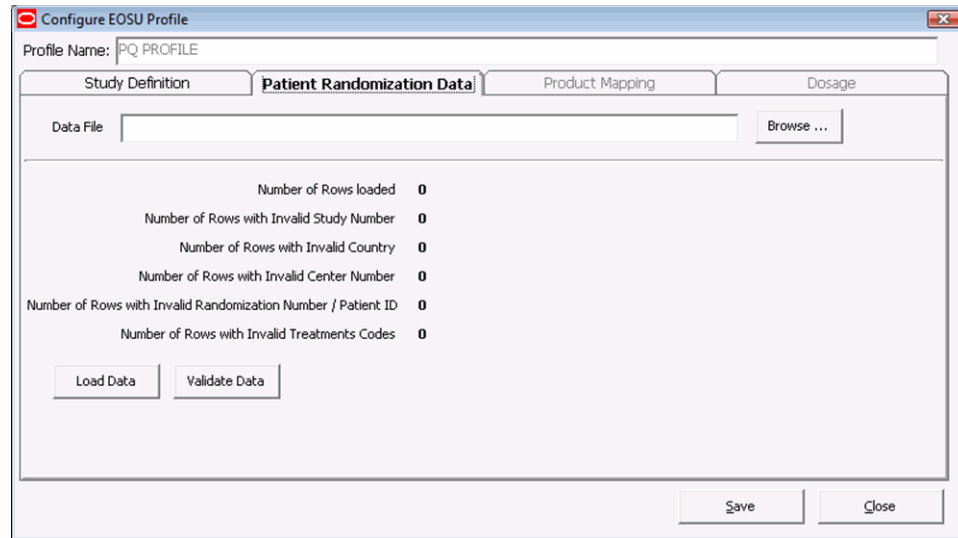
You can load randomization data for the Argus Unblinding profile from the **Patient Randomization Data** tab. Table 4-3 lists and describes the fields and controls on the tab.

The following table describes Patient Randomization Data Tab Fields and Controls:

Field/Control	Description
Data File	Enables you to select the data file to load.
Load Data	Clicking this button loads data into the Randomization Data Tables.
Validate Data	Clicking this button validates the data and generates a report that you can access through the Report Viewer.
Save	Enables you to save the data on the tab.
Close	Enables you to close the tab without saving the data.

To load randomization data for the profile

1. In the **Configure Argus Unblinding Profile** dialog box, click the **Patient Randomization Data** tab.



2. When the **Patient Randomization Data** tab opens:
 - Click Browse and select the appropriate Excel data file to load.
 - Click Save.

Mapping Treatment Codes to Study Products

On the **Product Mapping** tab, you can map treatment codes from the Randomization Data to Study Products.

Note: This release is intended to un-blind only Drug based Studies. Vaccine and Device based studies **are not** supported. Argus Unblinding **will not** show Products with Device and Vaccine licenses on the Profile configuration (Treatment Code to Study Product Mapping).

The following table lists and describes the fields and controls on the **Product Mapping** tab.

Field/Control	Description
Add	Enables you to: Add a new treatment code to study product mapping Unblind a treatment code for multiple study products.
Delete	Deletes the current row in the table.
Saves	Saves the current profile with the new data.
Close	Closes the Configure Argus Unblinding Profile dialog box.

To configure product mapping

1. Click the **Product Mapping** tab.

Configure EOSU Profile

Profile Name: PQ PROFILE

Study Definition Patient Randomization Data **Product Mapping** Dosage

Treatment Code	Study Product
A	Orcl Product Name 33
A	Orcl Product Name 11
C	

Add Delete Save Close

2. When the **Product Mapping** tab opens:
 - Select the appropriate treatment code for each study product from the Treatment Code drop-down.
 - Click Save to proceed to the Dosage tab.

Configuring Dosage

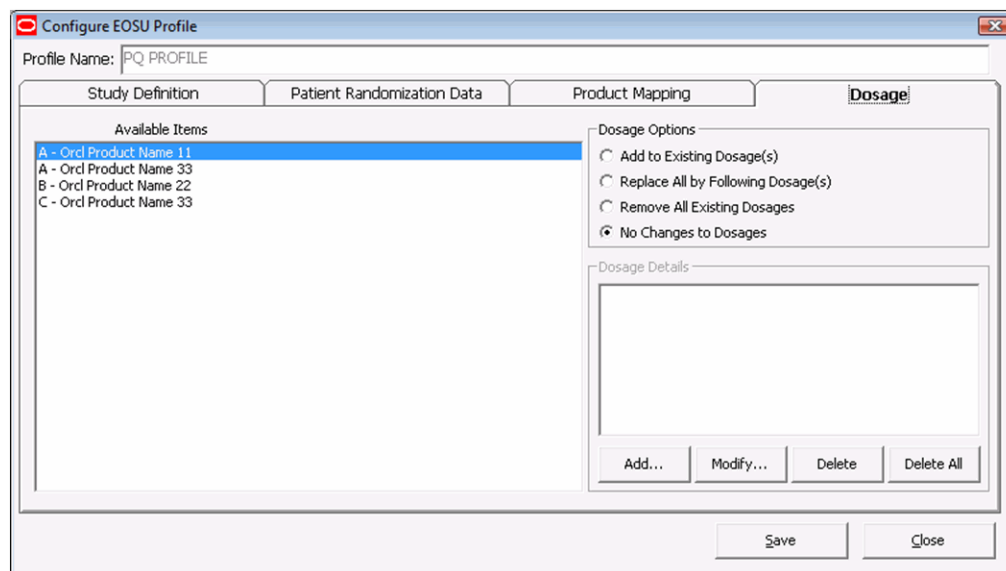
You can enter dosage details for each treatment and study product on the **Dosage** tab.

The following table describes the Dosage Tab Fields and Controls:

Field/Control	Description
Available Items	Contains a list of available dosage records for the profile.
Dosage Options	Enables you to select how you want to handle the dosage Add to Existing Dosages - Add a specified dosage amount to the current dosage. Replace All by Following Dosages - Replace the current dosage with a new dosage. Remove All Existing Dosages - Remove all dosages from the selected dosage record. No Changes to Dosages - Do not make any changes.
Dosage Details	Enter the details regarding the dosages for the selected dosage record.
Add	Enables you to add a dosage record.
Modify	Enables you to modify an existing dosage record.
Delete	Enables you to delete an existing dosage record.
Delete All	Enables you to delete all dosage information
Save	Saves the dosage information.
Close	Closes the Dosage tab without saving the data.

To configure dosage:

1. Click the **Dosage** tab.



2. When the **Dosage** tab opens:
 - Select the appropriate dosage record from the Available Items list.
 - Select the appropriate option from the Dosage Options list.
 - Add, Modify, Delete, or Delete All the dosage as required.
 - Click Save.

Copying Profiles

A profile can be copied to another profile from the Profile Configuration Screen. The following restrictions apply when copying the profile:

- Only one profile with a specific **Study** and **Include Cases** option (Suspected, Non-Suspected or All) can exist in the database.
- A profile with **ALL** as the **Include Cases** option cannot be copied to any other profile. **ALL** includes Suspected and Non-Suspected case.
- When copying a profile where the Include Cases option is **Suspected**, the system automatically creates another profile with the **Non-Suspected** flag is checked (assuming the same study with Non-Suspected option did not exist before).
- When the system copies a profiles where the Include Cases option is **Non-Suspected**, the system automatically creates another profile with the **Suspected** flag checked (assuming the same study with Suspected option did not exist before)

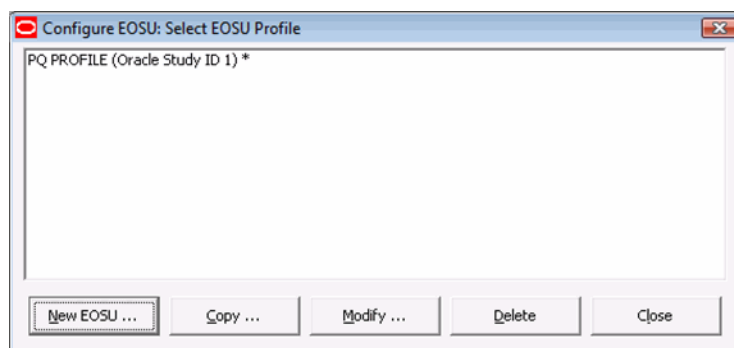
Use the following procedure to copy an existing profile:

1. Select **Start => Programs => Oracle => End of Study Unblinding => End of Study Unblinding**.
2. When the **log in** window opens:



- Enter the user name in the User Name field.
 - Enter the user password in the Password field.
 - Enter the name of the database where Argus Generic is installed in the Database field.
 - Click **Login**.
3. When the Argus Unblinding application opens, choose **Argus Unblinding=> Configure Argus Unblinding**.
 4. Argus Unblinding opens the **Configure Argus Unblinding: Select Argus Unblinding Profile** window.

Note: An asterisk (*) next to a profile name indicates that the profile configuration is incomplete and cannot be executed.



- Click Copy to copy an existing Argus Unblinding profile.
5. The system copies the profile.

Modifying Profiles

A profile can be modified from the Profile Configuration Screen. You can modify parameters on all tabs except on the **Study Definition** tab. On that tab, you can modify all parameters except the following:

- Study Number

- Include Cases

To modify a profile:

1. Select **Start => Programs => Oracle => End of Study Unblinding => End of Study Unblinding**.
2. When the **log in** window opens:
 - Enter the user name in the User Name field.
 - Enter the user password in the Password field.
 - Enter the name of the database where Argus Generic is installed in the Database field.
 - Click Login.
3. When the Argus Unblinding application opens, choose **Argus Unblinding=>=> Configure Argus Unblinding**.
4. Argus Unblinding opens the **Configure Argus Unblinding: Select Argus Unblinding Profile** window.

Note: An asterisk (*) next to a profile name indicates that the profile configuration is incomplete and cannot be executed.

- Click Modify to make changes to an existing Argus Unblinding profile.
5. When the system opens the Configure Argus Unblinding Profile dialog box:
 - Modify the data on the various tabs as necessary.

Deleting Profiles

You can delete a profile. When deleting a profile, be aware of the following restrictions:

- If there is a past attempt to unblind cases with the same profile, the system will not allow you to delete the profile.
- Profiles are only deleted logically. An EP_DELETED column in the Argus Unblinding_PROFILE table which, when not null, indicates that this profile has been deleted

Use the following procedure to delete a profile:

1. Select **Start => Programs => Oracle => End of Study Unblinding => End of Study Unblinding**.
2. When the **log in** window opens:
 - Enter the user name in the User Name field.
 - Enter the user password in the Password field.
 - Enter the name of the database where Argus Generic is installed in the Database field.
 - Click Login.
3. When the Argus Unblinding application opens, choose **Argus Unblinding=> Configure Argus Unblinding**. Argus Unblinding opens the **Configure Argus Unblinding: Select Argus Unblinding Profile** window.

4. Argus Unblinding opens the Configure Argus Unblinding: Select Argus Unblinding Profile window.

Note: An asterisk (*) next to a profile name indicates that the profile configuration is incomplete and cannot be executed.

- Click Delete to delete an existing Argus Unblinding profile.
5. The system deletes the profile.

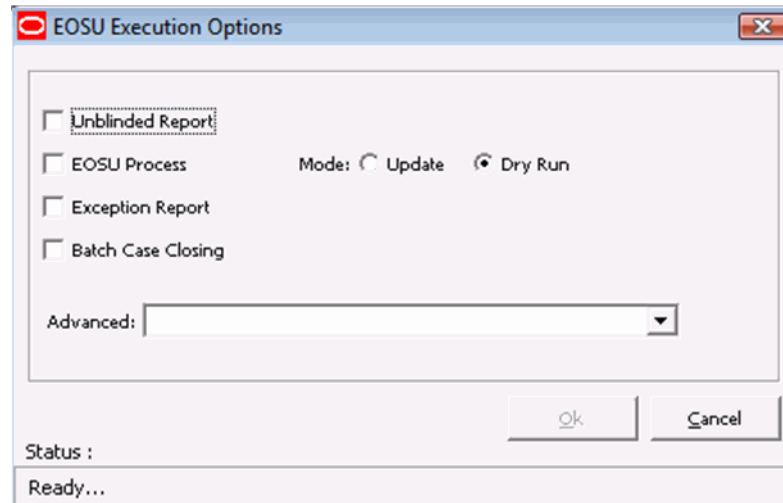
Executing the Argus Unblinding Profile

When you run an Argus Unblinding profile, you select **Execution Options** from the **Argus Unblinding Execution Options** dialog box. Table 4-6 lists and describes the function of each execution option.

The following table describes Argus Unblinding Execution Options:

Option	Function
Unblinded Report	Generates an Unblinded report.
Argus Unblinding Process	Executes the profile against the Argus database.
Exception Report	Generates an exception for the last execution.
Batch Case Closing	Performs batch case closing for cases selected under this profile.
Update	Updates the Argus data when you run the profile.
Dry Run	Generates and reviews log files before updating the Argus data.
Advanced	Enables you to specify an Advanced Condition to restrict the cases processed by each execution.

1. To execute a profile
 1. Select **Start => Programs => Oracle => End of Study Unblinding => End of Study Unblinding**.
 2. When the **log in** window opens:
 - Enter the user name in the User Name field.
 - Enter the user password in the Password field.
 - Enter the name of the database where Argus Generic is installed in the Database field.
 - Click Login.
 3. When the Argus Unblinding application opens, choose **Argus Unblinding=> Execute Argus Unblinding**.
 4. When the **Argus Unblinding Execution Options** window opens:



- Check **Argus Unblinding Process** and select the **Dry Run** radio button.
- Click **OK**.

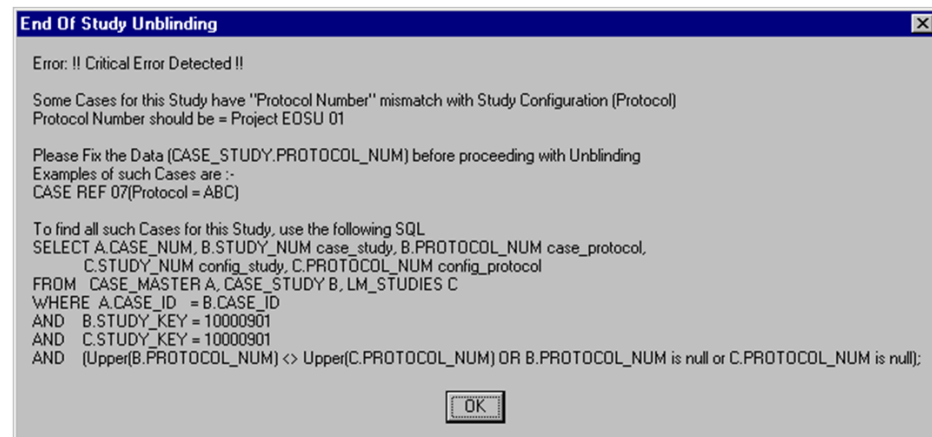
Error Messages

When executing an Argus Unblinding profile you may receive error messages under certain conditions.

Error Message: Protocol Number Mismatch

Error Message: !! Critical Error Detected !!

Error Display:



Reason for Error: The Study information (Protocol Number) does not match Study definition under List Maintenance.

As shown in the image above, a Case **CASE REF 07** shows protocol number **ABC** where the protocol number **Project Argus Unblinding 01** is used in study information. The Argus Unblinding software shows a maximum of four (4) cases followed by an SQL statement to help the user to capture all Cases with mismatched data. The User can then update the data in the database and re-execute the profile.

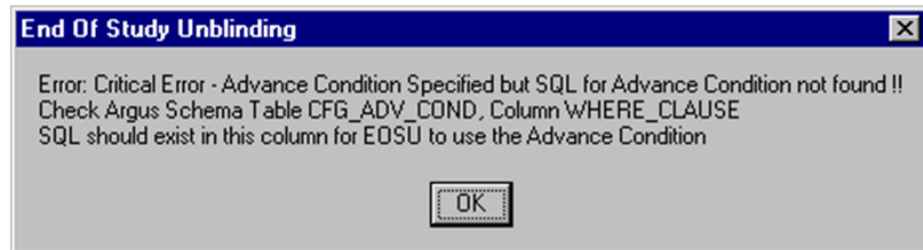
Resolution: Update the protocol number in list maintenance or update the Case Data (CASE_STUDY.PROTOCOL_NUM) with the matching PROTOCOL ID from the Clinical Study information and re-execute the profile

Comment: This message was introduced to prevent the system from hanging indefinitely when there is a data mismatch.

Error Message: No SQL for Advanced Condition

Error Message: Critical Error - Advance Condition...

Error Display:



Reason for Error: The where clause (CFG_ADV_COND.WHERE_CLAUSE) required to execute the Argus Unblinding software with an advanced condition (defined on the **Argus Unblinding Execution Options** dialog box to filter the number of cases being processed) is missing.

Exception Report Messages

The software generates an exception report for cases that cannot be Unblinded. The following is a list of possible errors that can be associated with failed cases:

- Case is in use by User <XYZ>. To release lock, request the user to login and logout.
- Case is unlocked or open.
- The Randomization data is missing for the Country, Study, Center, and Randomization Number.
- The Patient Exposure drug could not be located in LM_STUDIES.
- Case Narrative is larger than 32KB.
- There was an Oracle Error during breaking of the Blind. <Oracle Error Message>
- Failed in PROCESS_CASE. Oracle Text is <Oracle Error Message>
- Duplicate entries in Randomization Data (Country+Study+Center+Rand#) are matching the Case Data.

Using the Argus Unblinding Report Viewer

Use the Argus Unblinding Report Viewer to select and view unblinded reports. Table 4-7 lists and describes the fields and controls on the **Report Viewer** dialog box.

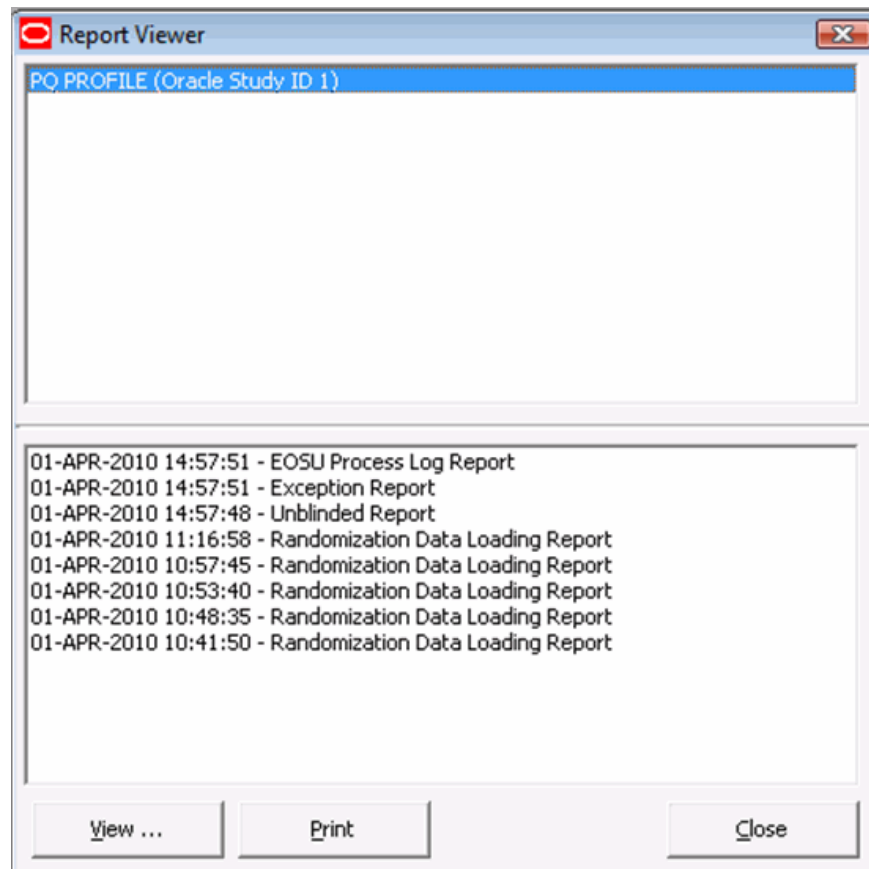
The following table describes Argus Unblinding Report Viewer Fields and Controls:

Field/Control	Description
View	Opens the report in Microsoft Word.

Field/Control	Description
Print	Prints the report to the printer.
Close	Closes the current window.

Use the following procedure to use the Argus Unblinding Report Viewer:

1. Select **Start => Programs => Oracle => End of Study Unblinding => End of Study Unblinding**.
2. When the **log in** window opens:
 - Enter the user name in the User Name field.
 - Enter the user password in the Password field.
 - Enter the name of the database where Argus Generic is installed in the Database field.
 - Click Login.
3. When the Argus Unblinding application opens, choose **Argus Unblinding=> Report Viewer**.
4. When the **Report Viewer** dialog box opens:



- Select a report to view from the list at the bottom of the dialog box.
- Click View... to view the report in Microsoft Word.

Argus Unblinding Updates

Argus Unblinding does not pick up a case that is globally or locally unlocked. These cases are logged in the exception report as today but with the failure reason modified to say "Case is unlocked (globally and/or locally) or open".

The unblinded report includes these cases under one of the following three corresponding sections retaining the existing functionality:

Not Locked and Not Closed Blinded Suspected cases

Not Locked and Not Closed Blinded Not-Suspected cases

Not Locked and Not Closed Cases Un-blinded (during study) cases

Argus Unblinding does not pick up a case that is pending local or global report submission. Argus Unblinding used to abort when a report was pending submission. This has been fixed to skip the case when pending submission and log in the exception report with the failure reason "Case is pending report submission".

The "unblinded report" includes these cases under one of the following three new sections:

Pending Report Submission Blinded Suspected cases

Pending Report Submission Blinded Not-Suspected cases

Pending Report Submission Cases Un-blinded (during study) cases

Once unblinding is complete for a Local PRPT Case, system shall continue to perform global lock as with existing functionality but shall not perform any local lock and hence shall not generate any local reports. It is expected that the customer shall manually local lock the case after local data entry, license selections and assessments.

Note that the system shall determine the local reports based on the Local Reports Configuration and the reporting rules that were selected in the Argus Unblinding configuration.

Note that these cases shall also be not be picked by Batch Case Closing Module.

The unblinded report "un-blinded report" shall include these Local PRPT Case that had been unblinded but not been locally locked by the system after unblinding, under the following new section. Note that a case may appear in only one of the sections in the Unblinded report. So a case listed under this new section shall not appear under the existing "Suspected Cases which were Un-blinded following the study end" section (or any other section).

Batch Case Closing Module shall retain the existing functionality and shall check both local and global reports if they are pending generation to determine if a case can be closed.

Exiting from Argus Unblinding

You can exit from the Argus Unblinding application by doing either of the following:

- Select **File => Exit**.
- Press **ALT+F4**.

Uninstalling Client Software

Use Windows **Add or Remove Programs** under Control Panel to remove the Argus Unblinding client from machine.