

**Oracle® Enterprise Pack**  
Installing Oracle Enterprise Pack  
12c (12.2.1.1)  
**E68496-01**

November 2015  
Documentation that describes how to install the Oracle  
Enterprise Pack for Eclipse.

Oracle Enterprise Pack Installing Oracle Enterprise Pack, 12c (12.2.1.1)

E68496-01

Copyright © 2015, Oracle and/or its affiliates. All rights reserved.

Primary Author: Walter Egan

This software and related documentation are provided under a license agreement containing restrictions on use and disclosure and are protected by intellectual property laws. Except as expressly permitted in your license agreement or allowed by law, you may not use, copy, reproduce, translate, broadcast, modify, license, transmit, distribute, exhibit, perform, publish, or display any part, in any form, or by any means. Reverse engineering, disassembly, or decompilation of this software, unless required by law for interoperability, is prohibited.

The information contained herein is subject to change without notice and is not warranted to be error-free. If you find any errors, please report them to us in writing.

If this is software or related documentation that is delivered to the U.S. Government or anyone licensing it on behalf of the U.S. Government, then the following notice is applicable:

U.S. GOVERNMENT END USERS: Oracle programs, including any operating system, integrated software, any programs installed on the hardware, and/or documentation, delivered to U.S. Government end users are "commercial computer software" pursuant to the applicable Federal Acquisition Regulation and agency-specific supplemental regulations. As such, use, duplication, disclosure, modification, and adaptation of the programs, including any operating system, integrated software, any programs installed on the hardware, and/or documentation, shall be subject to license terms and license restrictions applicable to the programs. No other rights are granted to the U.S. Government.

This software or hardware is developed for general use in a variety of information management applications. It is not developed or intended for use in any inherently dangerous applications, including applications that may create a risk of personal injury. If you use this software or hardware in dangerous applications, then you shall be responsible to take all appropriate fail-safe, backup, redundancy, and other measures to ensure its safe use. Oracle Corporation and its affiliates disclaim any liability for any damages caused by use of this software or hardware in dangerous applications.

Oracle and Java are registered trademarks of Oracle and/or its affiliates. Other names may be trademarks of their respective owners.

Intel and Intel Xeon are trademarks or registered trademarks of Intel Corporation. All SPARC trademarks are used under license and are trademarks or registered trademarks of SPARC International, Inc. AMD, Opteron, the AMD logo, and the AMD Opteron logo are trademarks or registered trademarks of Advanced Micro Devices. UNIX is a registered trademark of The Open Group.

This software or hardware and documentation may provide access to or information about content, products, and services from third parties. Oracle Corporation and its affiliates are not responsible for and expressly disclaim all warranties of any kind with respect to third-party content, products, and services unless otherwise set forth in an applicable agreement between you and Oracle. Oracle Corporation and its affiliates will not be responsible for any loss, costs, or damages incurred due to your access to or use of third-party content, products, or services, except as set forth in an applicable agreement between you and Oracle.

---

---

# Contents

<b>Preface</b> .....	v
Audience .....	v
Documentation Accessibility .....	v
Related Documents .....	v
Conventions .....	v
<b>1 Installing Oracle Enterprise Pack for Eclipse</b>	
1.1 Installing Your OEPE Application .....	1-1
1.2 System Requirements .....	1-1
1.3 Installing with the Distro .....	1-2
1.4 Installing with the Eclipse Installer .....	1-2
1.4.1 How to install using the Eclipse Installer .....	1-2
1.4.2 Choosing What to Install .....	1-2
1.4.2.1 Install Eclipse <i>version</i> and OEPE <i>version</i> .....	1-2
1.4.2.2 Choose an OEPE Version Based on an Eclipse Version .....	1-2
1.4.2.3 Explore Available Versions Based on the Required Capabilities .....	1-3
1.4.3 Selecting the Components to Install .....	1-3
1.5 Installing with Eclipse Marketplace .....	1-4
1.6 Installing Using the Repository .....	1-5
1.7 Updating an Existing Installation .....	1-5
1.7.1 How to Update Using Check for Updates Option .....	1-5
1.7.2 Troubleshooting Update .....	1-5
<b>2 Configuring Mobile Application Framework</b>	
2.1 Introduction to the MAF Environment .....	2-1
2.2 Prerequisites for Developing MAF Applications .....	2-1
2.2.1 What You Need to Develop an Application for iOS Platform .....	2-2
2.2.2 What You Need to Develop an Application for Android Platform .....	2-2
2.3 Setting Up OEPE .....	2-3
2.3.1 How to Specify JDK 8's JRE as the Default in OEPE .....	2-3
2.3.2 How to Configure the Development Environment for Target Platforms .....	2-4
2.3.2.1 Configuring the Environment for Target Platforms .....	2-4
2.4 Setting Up Development Tools for iOS Platform .....	2-5
2.4.1 How to Install Xcode and iOS SDK .....	2-5
2.4.2 How to Set Up an iPhone or iPad .....	2-5

2.4.3	How to Set Up an iPhone or iPad Simulator .....	2-6
2.5	Setting Up Development Tools for Android Platform .....	2-6
2.5.1	How to Install the Android SDK .....	2-6
2.5.2	How to Set Up an Android-Powered Device .....	2-7
2.5.3	How to Set Up an Android Emulator .....	2-8
2.5.3.1	Configuring the Android Emulator .....	2-9
2.5.3.1.1	Saving the Emulator State .....	2-9
2.5.3.1.2	Creating, Saving, and Reusing the SD Card .....	2-9
2.5.3.1.3	Configuring the Network .....	2-10
2.5.3.1.4	Configuring the Network Proxy .....	2-10
2.5.3.2	Speeding Up the Android Emulator .....	2-11
2.5.3.2.1	Configuring AVD for Intel HAXM .....	2-12
2.6	Testing the Environment Setup .....	2-15

### 3 Migrating Your Application to MAF 2.2.0

3.1	Migrating an Application to MAF 2.2.0 .....	3-1
3.2	Migrating to JDK 8 in MAF 2.2.0 .....	3-2
3.3	Migrating Cordova Plugins from Earlier Releases to MAF 2.2.0 .....	3-2
3.3.1	How to Migrate an Application .....	3-3
3.3.1.1	What Happens When you Migrate an Application .....	3-3
3.4	Configuring your Migrated MAF Application to Use the Full Screen on iOS Devices....	3-4
3.4.1	How to Configure your Migrated MAF Application to Use an iOS Device's Full Screen 3-5	
3.5	Retaining Legacy Behavior When Navigating a MAF Application Using Android's Back Button 3-5	
3.5.1	How to Retain Pre-MAF 2.2.0 Application Behavior in Response to Usage of Android's Back Button 3-6	
3.6	Migrating to a New cacerts File for SSL in MAF 2.2.0 .....	3-6

---

---

# Preface

Welcome to *Installing Oracle Enterprise Pack*.

## Audience

This document is intended for application developers who develop applications using Oracle Enterprise Pack for Eclipse.

## Documentation Accessibility

For information about Oracle's commitment to accessibility, visit the Oracle Accessibility Program website at <http://www.oracle.com/pls/topic/lookup?ctx=acc&id=docacc>.

### Access to Oracle Support

Oracle customers that have purchased support have access to electronic support through My Oracle Support. For information, visit <http://www.oracle.com/pls/topic/lookup?ctx=acc&id=info> or visit <http://www.oracle.com/pls/topic/lookup?ctx=acc&id=trs> if you are hearing impaired.

## Related Documents

For more information, see the following documents:

- *Oracle Enterprise Pack for Eclipse Users Guide*
- *Oracle Enterprise Pack for Eclipse Online Help*
- *Developing Mobile Applications with Oracle Mobile Application Framework (OEPE Edition)*

## Conventions

The following text conventions are used in this document:

Convention	Meaning
<b>boldface</b>	Boldface type indicates graphical user interface elements associated with an action, or terms defined in text or the glossary.
<i>italic</i>	Italic type indicates book titles, emphasis, or placeholder variables for which you supply particular values.

---

<b>Convention</b>	<b>Meaning</b>
monospace	Monospace type indicates commands within a paragraph, URLs, code in examples, text that appears on the screen, or text that you enter.

---

---

# Installing Oracle Enterprise Pack for Eclipse

This chapter provides information on installing Oracle Enterprise Pack for Eclipse.

It contains the following sections:

- Installing Your OEPE Application
- System Requirements
- Installing with the Distro
- Installing with the Eclipse Installer
- Installing with Eclipse Marketplace
- Installing Using the Repository
- Updating an Existing Installation

## 1.1 Installing Your OEPE Application

OEPE is easily installed.

If you are installing Eclipse and OEPE, install using:

- The Eclipse Installer - installs Eclipse and OEPE from an installer launched from a Java plugin running in a browser. For more information, see [Section 1.4, "Installing with the Eclipse Installer."](#)
- The distro - download and unzip the kit which includes Eclipse along with OEPE. For more information, see [Section 1.3, "Installing with the Distro."](#)

If you already have Eclipse installed:

- You can install OEPE using Eclipse Marketplace. For more information, see [Section 1.5, "Installing with Eclipse Marketplace."](#)
- You can install from a repository. For more information, see [Section 1.6, "Installing Using the Repository."](#)

## 1.2 System Requirements

For information about system requirements and components supported by OEPE, see the System Requirements link under the **Technical Information** section of the following OEPE page on the Oracle Technology Network (OTN) at <http://www.oracle.com/technetwork/developer-tools/eclipse/learnmore/index.html>.

## 1.3 Installing with the Distro

The distro is a zip archive that contains Eclipse with OEPE already loaded.

To install using the distro:

1. From the Oracle Technology Network (OTN) web site:  
<http://www.oracle.com/technetwork/developer-tools/eclipse/downloads/index.html>, download the archive file appropriate for your operating system and Eclipse version.
2. Extract the archive file to a folder of your choice.

## 1.4 Installing with the Eclipse Installer

The Network Installer (Eclipse installer) installs Eclipse and OEPE. It also gives you control over the components that you install.

### 1.4.1 How to install using the Eclipse Installer

From the Oracle Technology Network (OTN) web site at <http://www.oracle.com/technetwork/developer-tools/eclipse/downloads/index.html>, launch the Eclipse Installer. The installer downloads and opens.

To install using the installer:

1. On the Eclipse Location page of the installer, enter or browse to the location where you want to install OEPE.
2. On the Guidance Level of the installer, choose the level of guidance you want. For more information, see [Section 1.4.2, "Choosing What to Install."](#)
3. If you select the **Explore available versions based on the required capabilities** guidance level, the next page is the Versions page. Move the capabilities you want to the Required Capabilities list, then select the Eclipse Version and OEPE version to install.
4. The Java Location page displays the detected JVM. If necessary, browse to another choose another Java version.
5. On the Components Page, choose the components that you want installed.
6. On the Licenses page of the installer, review the licence terms and accept them.
7. Click Install to download and install the versions of Eclipse and OEPE that you have specified.

### 1.4.2 Choosing What to Install

The Eclipse Installer provides three levels of guidance to help you choose the Eclipse and OEPE versions, and you should choose the one that best suits your requirements. With each option, you can choose the OEPE components to install.

#### 1.4.2.1 Install Eclipse version and OEPE version

This is the simplest method of installing Eclipse and OEPE. The most recent version of Eclipse and the appropriate OEPE version are selected.

#### 1.4.2.2 Choose an OEPE Version Based on an Eclipse Version

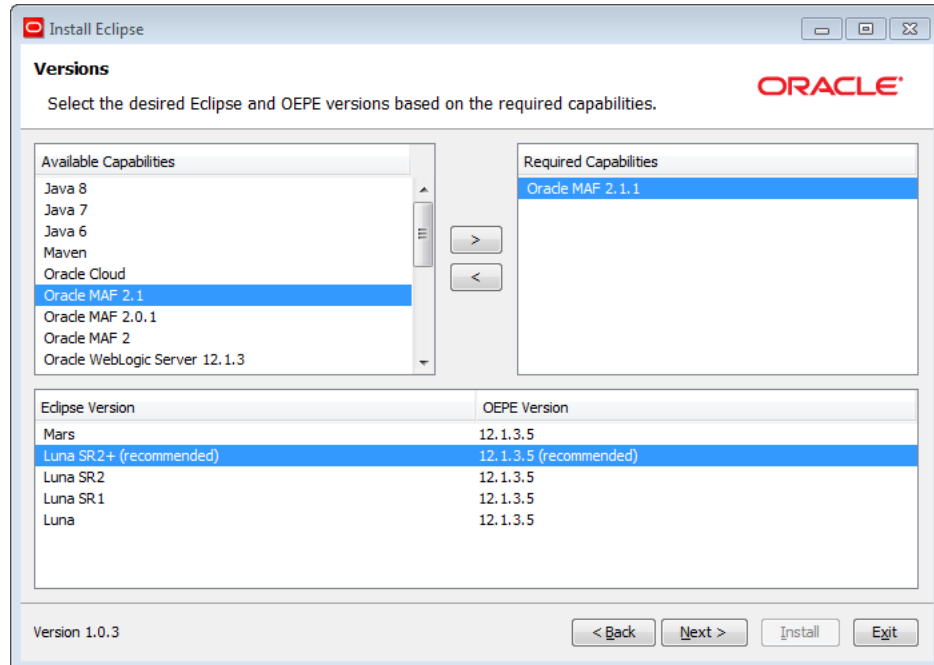
This option allows you to choose the Eclipse version you want, and then choose from the available OEPE versions for that Eclipse version.



### 1.4.2.3 Explore Available Versions Based on the Required Capabilities

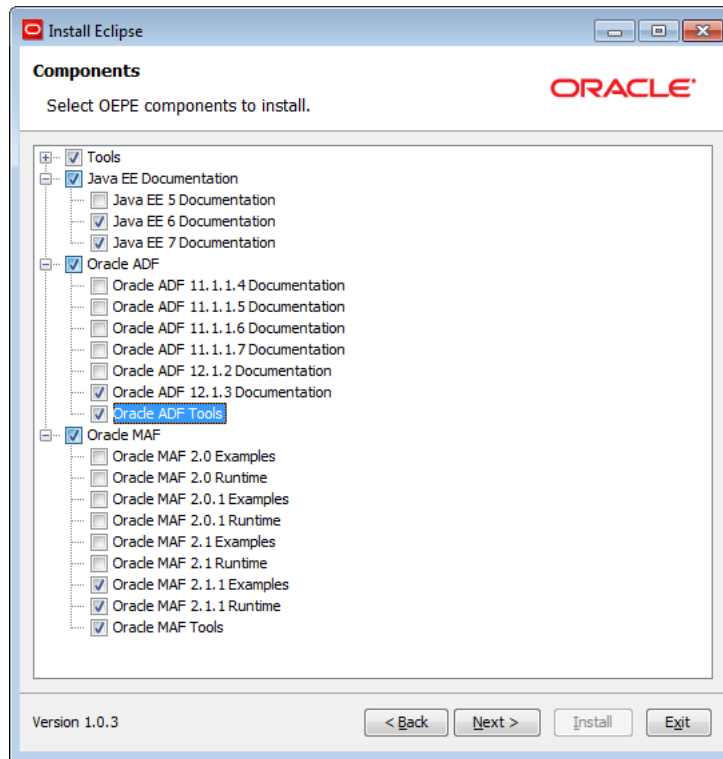
This option allows you specify the capabilities you want. The installer displays the Eclipse and OEPE versions that provide this, as shown in [Figure 1-1](#).

**Figure 1-1** *Choosing the Eclipse and OEPE Versions*



### 1.4.3 Selecting the Components to Install

Once you have determined which Eclipse version and OEPE version you want, you can choose the specific components to install, as shown in [Figure 1-2](#).

**Figure 1–2** Choosing the OEPE Components

## 1.5 Installing with Eclipse Marketplace

If you already have an installation of Eclipse, you can install OEPE using Eclipse Marketplace.

---

**Note:** The Eclipse Marketplace only allows you to install the latest OEPE version for a given Eclipse platform. If you want to install a specific version, install from the release repository.

---

To install using Eclipse Marketplace:

1. In Eclipse, choose **Help > Eclipse Marketplace**.
2. In the Eclipse Marketplace dialog, search for `Oracle`. The Marketplace returns all Oracle entries, such as OEPE, and Oracle Cloud Tools. You can choose to install OEPE, which includes all the features, or just the specific components you want.
3. Choose the appropriate version of OEPE for the version of Eclipse you are using. For example, if you are using Eclipse Luna, choose `Oracle Enterprise Pack for Eclipse Luna`. Click **Install**.
4. On the next page, the features that will be installed are listed. Click **Confirm**.
5. On the Review Licenses page, accept the terms of the license agreements and click **Finish**.

The software is installed. You can choose to run the installation in the background by clicking **Run in Background**.

## 1.6 Installing Using the Repository

Use the Install New Software feature from the repository.

To install using the repository:

1. From the Eclipse main menu, select **Help > Install New Software**.
2. Click **Add** to add a new update site.
3. In the Add Repository dialog, enter the repository location which you can find under the **Plugin Repository** section on the Oracle Technology Network (OTN) web site at <http://www.oracle.com/technetwork/developer-tools/eclipse/downloads/index.html>.

Then click **OK**.

**Note:** This URL works only from within Eclipse, and will not work if accessed through a browser.

4. In the software list, select **Oracle Enterprise Pack for Eclipse**, select the subcomponents you want, and then click **Next**.
5. Confirm information presented on the Install Details, and then click **Next**.
6. Review licenses on the Review Licenses page and click **Finish**.

## 1.7 Updating an Existing Installation

Eclipse allows you to browse for updates and install them, or to uninstall features that are already installed. You control this functionality from the Install/Update page of the Preferences dialog (available from the Window menu).

### 1.7.1 How to Update Using Check for Updates Option

You can use the Update wizard to download new components.

Updating OEPE Using Check for Updates:

1. In Eclipse, choose **Help > Check for Updates**. This launches an Update wizard.
2. In the wizard, select the appropriate options.
3. Agree to any licences, and start the download.

### 1.7.2 Troubleshooting Update

An OEPE update can fail if conflicting versions of plugins are found on non-Oracle sites. If update fails, de-select all non-Oracle repositories and try again.

To select the appropriate site:

1. Select **Window > Preferences**, then expand the category **Install/Update**.
2. Select **Available Software Sites**.
3. In the list of Available Software Sites, select just the appropriate Oracle repository, then click **OK**.

Now try using update again.



---

# Configuring Mobile Application Framework

This chapter provides information on setting up and configuring the Mobile Application Framework (MAF) environment for application development and deployment.

This chapter includes the following sections:

- [Section 2.1, "Introduction to the MAF Environment"](#)
- [Section 2.2, "Prerequisites for Developing MAF Applications"](#)
- [Section 2.3, "Setting Up OEPE"](#)
- [Section 2.4, "Setting Up Development Tools for iOS Platform"](#)
- [Section 2.5, "Setting Up Development Tools for Android Platform"](#)
- [Section 2.6, "Testing the Environment Setup"](#)

## 2.1 Introduction to the MAF Environment

Before developing a MAF application, you must set up your development environment by downloading, installing, and configuring various software components.

To set up a typical MAF development environment that consists of an IDE, mobile platform-specific tools, and, possibly, a mobile device, follow steps described in [Section 2.2, "Prerequisites for Developing MAF Applications."](#)

For complete list of supported versions of development and runtime tools, see Oracle Mobile Application Framework Certification Matrix by following the Certification Information link on the MAF documentation page at <http://www.oracle.com/technetwork/developer-tools/maf/documentation/>.

## 2.2 Prerequisites for Developing MAF Applications

You need to specify JDK 8's JRE as the default JRE for OEPE, as described in [Section 2.3.1, "How to Specify JDK 8's JRE as the Default in OEPE."](#)

See the following sections for platform-specific prerequisites if you plan to target one or both of the following platforms:

- [What You Need to Develop an Application for iOS Platform](#)
- [What You Need to Develop an Application for Android Platform](#)

You do not need to install any additional tools for creating specific types of MAF application content (HTML, remote URL, or MAF AMX).

## 2.2.1 What You Need to Develop an Application for iOS Platform

Before you start creating a MAF application for iOS, ensure that you have the following available:

- A computer running Mac OS X
- OEPE (see [Section 2.3, "Setting Up OEPE"](#))
- Xcode and iOS SDK (see [Section 2.4.1, "How to Install Xcode and iOS SDK"](#))
- The most recent version of JDK 8

Before you start deploying your application to a development environment (see the "Getting Started with Mobile Application Development" chapter in *Developing Mobile Applications with Oracle Mobile Application Framework (OEPE Edition)*), decide whether you would like to use a mobile device or its simulator: if you are to use a simulator, see [Section 2.4.3, "How to Set Up an iPhone or iPad Simulator"](#); if your goal is to deploy to a mobile device, ensure that, in addition to the components included in the preceding list, you have the following available:

- Various login credentials. For more information, see the "Deploying Mobile Applications" chapter in *Developing Mobile Applications with Oracle Mobile Application Framework (OEPE Edition)*.
- iOS-powered device. For more information, see [Section 2.4.2, "How to Set Up an iPhone or iPad."](#)

## 2.2.2 What You Need to Develop an Application for Android Platform

Before you start creating a MAF application for Android, ensure that you have the following available:

- A computer running an operating system listed in the Desktop OS Requirements section of the Oracle Mobile Application Framework Certification Matrix that you access by following the Certification Information link on the MAF documentation page at <http://www.oracle.com/technetwork/developer-tools/maf/documentation/>.
- The most recent version of JDK 8
- Android SDK with platform and build tools (see [Section 2.5.1, "How to Install the Android SDK"](#))
- OEPE (see [Chapter 1, "Installing Oracle Enterprise Pack for Eclipse."](#))

Before you start deploying your application to a development environment (see the "Getting Started with Mobile Application Development" chapter in *Developing Mobile Applications with Oracle Mobile Application Framework (OEPE Edition)*), decide whether you would like to use a mobile device or its emulator: if you are to use an emulator, see [Section 2.5.3, "How to Set Up an Android Emulator"](#); if your goal is to deploy to a mobile device, ensure that, in addition to the components included in the preceding list, you have the following available:

- Various login credentials. For more information, see the "Deploying Mobile Applications" chapter in *Developing Mobile Applications with Oracle Mobile Application Framework (OEPE Edition)*.
- Android-powered device. For more information, see [Section 2.5.2, "How to Set Up an Android-Powered Device."](#)

## 2.3 Setting Up OEPE

Setting up OEPE to develop MAF applications requires you to:

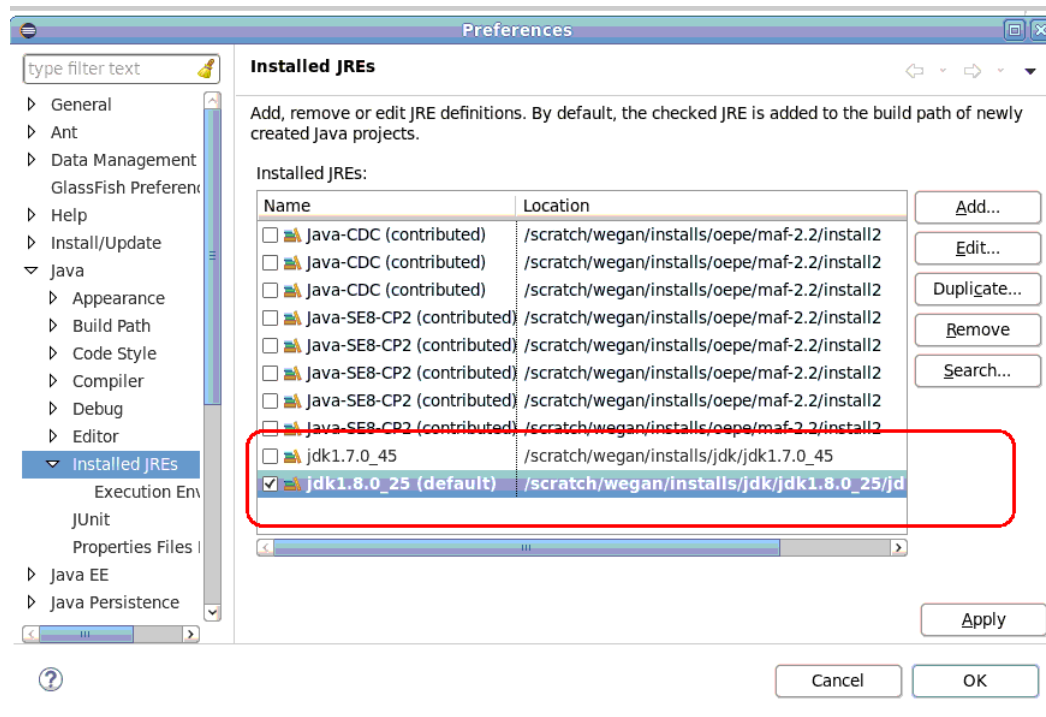
- Specify the JRE from JDK 8, as described in [Section 2.3.1, "How to Specify JDK 8's JRE as the Default in OEPE."](#)
- Configure OEPE to target the platform(s) you want the MAF application to run on, as described in [Section 2.3.2, "How to Configure the Development Environment for Target Platforms."](#)

### 2.3.1 How to Specify JDK 8's JRE as the Default in OEPE

You must specify the JRE packaged with JDK 8 as the default JRE in OEPE so that OEPE adds this JRE to the build path of newly-created MAF applications.

#### To specify JDK 8's JRE as the default in OEPE:

1. Select **Window > Preferences** from OEPE's main menu to open the Preferences dialog.
2. In the **Preferences** dialog, open the folder **Java > Installed JREs** from the tree to open a page that displays a list of installed JREs.
3. If the JDK 8 JRE (for example, `jdk1.8.0_25`) is present, select the associated checkbox to make it the default.
4. If the JDK 8 JRE is not present, do the following:
  - Click **Add**, select **Standard VM** in the dialog that appears and click **Next**.
  - In the Add JRE dialog that appears, click **Directory** to browse to your root JDK 8 directory and select it.
  - Click **Finish**.
5. In the Installed JREs page of the Preferences dialog, verify that the JDK 8 JRE is the default selection, as shown in [Figure 2-1](#).

**Figure 2–1 Default JRE Selection in OEPE Preferences Dialog.**

## 2.3.2 How to Configure the Development Environment for Target Platforms

Before you start developing and deploying a MAF application, you may need to configure preferences for appropriate platforms.

### 2.3.2.1 Configuring the Environment for Target Platforms

For successful packaging and deployment of your application to target platforms supported by MAF, OEPE must be provided with information such as the name of the platform and directories on your development computer that contain the platform-specific tools and data.

#### Before you begin:

Depending on your target platform, download and configure either the Android SDK (see Section 2.5.1, "How to Install the Android SDK") or iOS SDK and Xcode (see Section 2.4.1, "How to Install Xcode and iOS SDK").

To configure your environment for target platforms:

1. Select **Window > Preferences** from OEPE's main menu to open the Preferences dialog.
2. In the **Preferences** dialog, open the folder **Oracle > Mobile Application Framework > Android** or **Oracle > Mobile Application Framework > iOS** from the tree to open a page that contains the path and configuration parameters for the supported platforms.

Each platform-specific page hosts the preferences for the platform SDK (Android or iOS), collecting any necessary information such as the path that MAF needs to compile and deploy either Android or iOS projects:

- For Android platform, specify the Android SDK location on your computer, the local directory of your target Android platform, and provide information



on the signing credentials by selecting **Android Keystores** from the Android Platform section of the tree.

- For iOS platform, specify the location of the Xcodebuild utility. For more information, see "How to Deploy an iOS Application to an iOS Simulator" in *Developing Mobile Applications with Oracle Mobile Application Framework (OEPE Edition)*.

## 2.4 Setting Up Development Tools for iOS Platform

In addition to general-purpose tools listed in Section 2.2, "Prerequisites for Developing MAF Applications," you might want to set up an iPhone or iPad when getting ready for development of a MAF application for the iOS platform (see Section 2.4.2, "How to Set Up an iPhone or iPad").

Since iPhone and iPad simulators are included in the iOS SDK installation, you do not need to separately install them. For more information, see Section 2.4.3, "How to Set Up an iPhone or iPad Simulator."

### 2.4.1 How to Install Xcode and iOS SDK

You download Xcode from <http://developer.apple.com/xcode/>. This download includes the iOS SDK.

After installing Xcode, you have to run it at least once and complete the Apple licensing and setup dialogs. If these steps are not performed, any build and deploy cycle from OEPE to Xcode or a device simulator fails with a "Return code 69" error.

---

---

**Note:** Since older versions of Xcode are not available from the Mac App Store, in order to download them you must obtain an Apple ID from <http://appleid.apple.com>, and then register this Apple ID with the Apple Developer Program to gain access to the Apple developer site at <http://developer.apple.com>.

---

---

### 2.4.2 How to Set Up an iPhone or iPad

In your MAF application development and deployment, you can use either the iPhone, iPad, or their simulators (see Section 2.4.3, "How to Set Up an iPhone or iPad Simulator"). If you are planning to use an actual iPhone or iPad, which is preferable for testing (see the "Testing MAF Applications" section in *Developing Mobile Applications with Oracle Mobile Application Framework (OEPE Edition)*), you need to connect it to your computer to establish a link between the two devices.

To deploy to an iOS-powered device, you need to have an iOS-powered device with a valid license, certificates, and distribution profiles. For more information, see the "Deploying Mobile Applications" chapter in *Developing Mobile Applications with Oracle Mobile Application Framework (OEPE Edition)*.

---

---

**Note:** Since Apple's licensing terms and conditions may change, ensure that you understand them, comply with them, and stay up to date with any changes.

---

---

### 2.4.3 How to Set Up an iPhone or iPad Simulator

In your MAF application development and deployment, you can use either the iOS-powered device itself (see [Section 2.4.2, "How to Set Up an iPhone or iPad"](#)) or its simulator. Deploying to a simulator is usually much faster than deploying to a device, and it also means that you do not have to sign the application first.

A simulator can be invoked automatically, without any additional setup.

---

---

**Note:** Before attempting to deploy your application from OEPE to a device simulator, you must first run the simulator.

---

---

If you are planning to use web services in your application and you are behind a corporate firewall, you might need to configure the external network access. You do so by modifying the network settings in the System Preferences on your development computer. For more information, see the "Configuring the Browser Proxy Information" section in *Developing Mobile Applications with Oracle Mobile Application Framework (OEPE Edition)*.

## 2.5 Setting Up Development Tools for Android Platform

In addition to the general-purpose tools listed in [Section 2.2, "Prerequisites for Developing MAF Applications,"](#) you might want to set up an Android-powered device when getting ready for development of a MAF application for the Android platform (see [Section 2.5.2, "How to Set Up an Android-Powered Device"](#)).

Since emulators are included in the Android SDK installation, you do not need to separately install them. However, you cannot use an emulator until you create its configuration (see [Section 2.5.3, "How to Set Up an Android Emulator"](#)).

To develop for the Android platform, you can use any operating system that is supported by both OEPE and Android.

For more information, see the "Developer Tools" section of the Android Developers website at <http://developer.android.com/tools/index.html>.

### 2.5.1 How to Install the Android SDK

Android SDK includes the development tools that you need to build applications for Android-powered devices. Since the Android SDK is modular, it allows you to download components separately depending on your target Android platform and your application requirements.

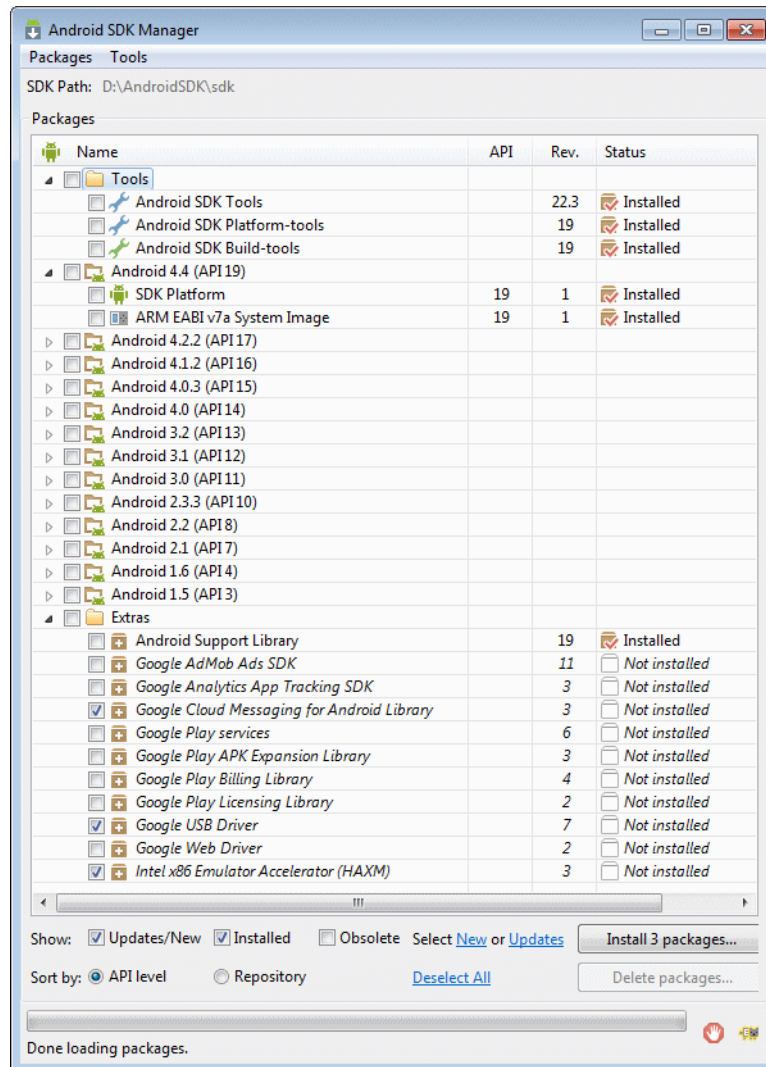
#### **Before you begin:**

Make sure that your environment meets the operating system, JDK version, and hardware requirements listed in the "System Requirements" section of the Android Developers website at <http://developer.android.com/sdk/index.html>.

To install the Android SDK:

1. Download the Android SDK starter package from <http://developer.android.com/sdk/index.html>.
2. By default, the Android SDK Tools, Android SDK Platform-tools and several other packages are installed. You can install additional packages using the Android SDK Manager, as shown in [Figure 2-2](#).

Figure 2–2 Android SDK packages to install



- Complete the installation by following the instructions provided in the "Installing the Android SDK" section of the Android Developers website at <http://developer.android.com/sdk/installing/index.html>.

---

**Note:** Do not start the Android SDK Manager when prompted. Instead, follow the instructions on installing the Eclipse plugin called Android Development Tools (ADT), located at <http://developer.android.com/sdk/installing/installing-adt.html>

---

## 2.5.2 How to Set Up an Android-Powered Device

In your MAF application development and deployment, you can use either the Android device itself, which is preferable for testing (see the "Testing MAF Applications" section in *Developing Mobile Applications with Oracle Mobile Application Framework (OEPE Edition)*), or an emulator (see Section 2.5.3, "How to Set Up an Android Emulator").

For information on how to set up the Android-powered device, follow the instructions from the "Using Hardware Devices" section of the Android Developers website at <http://developer.android.com/tools/device.html>.

---

**Note:** You might experience issues when using USB connectivity for the device-based debugging. For more information, see the "Testing and Debugging MAF Applications" chapter in *Developing Mobile Applications with Oracle Mobile Application Framework (OEPE Edition)*.

---

Your target Android-powered device might not be listed in the USB device driver's `.inf` file, resulting in the failure to install the Android Debug Bridge (ADB). You can eliminate this issue as follows:

1. Find the correct values for your device.
2. Update the `[Google.NTx86]` and `[Google.NTamd64]` sections of the `android_winusb.inf` file.

For more information, see the "Google USB Driver" section of the Android Developers website at <http://developer.android.com/sdk/win-usb.html>.

### 2.5.3 How to Set Up an Android Emulator

In your MAF application development and deployment, you can use either the Android device itself (see Section 2.5.2, "How to Set Up an Android-Powered Device") or its emulator. Deploying to an emulator is usually much faster than deploying to a device, and it also means that you do not have to sign the application first.

For information on how to create an emulator configuration called Android Virtual Device (AVD), follow the instructions from the "Managing Virtual Devices" section of the Android Developers website at <http://developer.android.com/tools/devices/index.html>. When creating an AVD through the Create New Android Virtual Device dialog (see "Managing AVDs with AVD Manager" at <http://developer.android.com/tools/devices/managing-avds.html>), review all the settings to ensure that configuration matches what you are planning to emulate. In particular, you should verify the following:

- The Target field should define the desired Android platform level for proper emulation.
- The CPU/ABI field should reflect the Intel Atom system image (see Section 2.5.3.2.1, "Configuring AVD for Intel HAXM").
- The SD card field should be defined based on whether the application uploads files or files install themselves to the SD card.
- Default settings for the Hardware field (see the "Hardware Options" table at [http://developer.android.com/tools/devices/managing-avds.html#hardware\\_opts](http://developer.android.com/tools/devices/managing-avds.html#hardware_opts)) should be acceptable for a typical MAF application. For additional hardware capabilities you may want to use in your application, such as cameras or geolocation services, create new properties.

You need to create an AVD for each Android platform on which you are planning to test your application.

For information on how to use the emulator, see the "Using the Android Emulator" section in the Android Developers website at <http://developer.android.com/tools/devices/emulator.html>.

### 2.5.3.1 Configuring the Android Emulator

After the basic Android emulator setup is complete, you may choose to perform the following configurations:

- Save the emulator state (see [Section 2.5.3.1.1, "Saving the Emulator State"](#))
- Create, save, and reuse the SD card (see [Section 2.5.3.1.2, "Creating, Saving, and Reusing the SD Card"](#))
- Configure the network (see [Section 2.5.3.1.3, "Configuring the Network"](#))
- Configure the network proxy (see [Section 2.5.3.1.4, "Configuring the Network Proxy"](#))

**2.5.3.1.1 Saving the Emulator State** You can reduce the emulator's load time by saving the emulator state or reusing the saved state. To do so, you manipulate the avd files or folders that are located in the `C:\Users\username\.android\avd` directory (on a Windows computer). Each avd folder contains several files, such as `userdata.img`, `userdata.qemu.img`, and `cache.img`. You can copy the `cache.img` file to another emulator's avd folder to use that state with another emulator.

Alternatively, you can use the command line to run relevant commands, such as, for example, `-snapshot-list`, `-no-snapstorage`, and so on. You can access these commands through `emulator -help` command.

---

**Caution:** When using this utility, keep in mind that in the process of loading, all contents of the system, including the user data and SD card images, will be overwritten with the contents they held when the snapshot was made. Unless saved in a different snapshot, any changes will be lost.

---

**2.5.3.1.2 Creating, Saving, and Reusing the SD Card** The "SD Card Emulation" section of the Android Developers website at <http://developer.android.com/tools/devices/emulator.html#sdcard> lists reasons for creating, saving, and reusing the SD card. You can perform these operations by executing the following commands:

- To create an SD card:

```
C:\android sdk directory\tools>mksdcard -l SD500M 500M C:\Android\sd500m.img
```

- To list existing AVDs:

```
C:\android sdk directory\tools>android list avd
```

This produces a listing similar to the following:

```
Available Android Virtual Devices:
Name: AVD_for_Nexus_S
Device: Nexus S (Google)
Path: C:\Users\username\.android\avd\AVD_for_Nexus_S.avd
Target: Android 5.0.1 (API level 21)
Tag/ABI: default/armeabi-v7a
Skin: 480x800
-----
Name:   AndroidEmulator2
Device: Nexus S (Google)
Path:   C:\Users\username\.android\avd\AndroidEmulator2.avd
Target: Android 5.0.1 (API level 21)
Tag/ABI: default/armeabi-v7a
```

```
Skin:    480x800
Sdcard: 500M
```

- To start the AndroidEmulator2 with the SD card that has just been created:

```
C:\Android\android sdk directory\tools>emulator -avd AndroidEmulator2 -sdcard
C:\Android\sd500m.img
```

- To list the running Android emulator instances:

```
C:\Android\android sdk directory\platform-tools>adb devices
```

- To copy a test image to the SD card (this requires the emulator to restart):

```
C:\Android\sdk\platform-tools>adb push test.png sdcard/Pictures
85 KB/s (1494 bytes in 0.017s)
```

For more information, see the Android Tools Help at <http://developer.android.com/tools/help/index.html>.

**2.5.3.1.3 Configuring the Network** From the Android emulator, you can access your host computer through the 10.0.2.2 IP address. To connect to the emulator from the host computer, you have to execute the adb command from a command line on your development computer or from a script to set up the port forwarding.

To forward socket connections, execute

```
adb forward local remote
```

using the following forward specifications:

- `tcp:port`
- `localabstract:unix domain socket name`
- `localreserved:unix domain socket name`
- `localfilesystem:unix domain socket name`
- `dev:character device name`
- `jdwp:process pid (remote only)`

For example, an arbitrary client can request connection to a server running on the emulator at port 55000 as follows:

```
adb -e forward tcp:8555 tcp:55000
```

In this example, from the host computer, the client would connect to `localhost:8555` and communicate through that socket.

For more information, see the "Android Debug Bridge" section in the Android Developers website at <http://developer.android.com/tools/help/adb.html>.

**2.5.3.1.4 Configuring the Network Proxy** If your development computer is behind a corporate firewall, you might need to configure a proxy by using one of the following techniques:

1. Execute this command to start the emulator and initiate its connection with the browser:

```
emulator -avd myavd -http-proxy myproxy
```

2. Start the emulator and then use its Settings utility as follows:

1. Select Wireless & Networks
2. Select Mobile Networks > Access Point Names
3. Select the appropriate internet option
4. Set the proxy, port, username, and password using the Edit access point list

### 2.5.3.2 Speeding Up the Android Emulator

The Intel Hardware Accelerated Execution Manager (Intel HAXM) is designed to accelerate the Android-powered device emulator by making use of Intel drivers.

The Intel HAXM is available for computers running Microsoft Windows, Mac OS X, and a separate kernel-based virtual machine option (KVM) for Linux. See <http://software.intel.com/en-us/android/articles/intel-hardware-accelerated-execution-manager> to access installation guides and detailed descriptions of system requirements for each operating system.

Regardless of which operating system your development computer is running on, it must have the following:

- Version 17 or later of the Android SDK installed (see Section 2.5.1, "How to Install the Android SDK").
- Intel processor with support for Intel VT-x, EM64T and Execute Disable (XD) Bit functionality at the BIOS level.

---

**Note:** It may be necessary to edit your system's BIOS to enable Intel VT-x support. To do this, restart your computer but do not let it boot normally: interrupt your boot process, then select the menu to edit your BIOS. Scroll through the BIOS selections until you see the entry for VT-x, then toggle it to select Enabled.

---

- At least 1 GB of available RAM.

To download the Intel HAXM, either use the Android SDK Manager (see the "Speeding Up the Android Emulator on Intel Architecture" article available at <http://software.intel.com/en-us/android/articles/speeding-up-the-android-emulator-on-intel-architecture>) or use the following Intel locations:

- For Microsoft Windows:  
<http://software.intel.com/en-us/android/articles/intel-hardware-accelerated-execution-manager-end-user-license-agreement>
- Mac OS X:  
<http://software.intel.com/en-us/android/articles/intel-hardware-accelerated-execution-manager-end-user-license-agreement-macosx>
- For Linux:  
<http://software.intel.com/en-us/blogs/2012/03/12/how-to-start-intel-hardware-assisted-virtualization-hypervisor-on-linux-to-speed-up-intel-android-x86-gingerbread-emulator>

To install the Intel HAXM, follow steps described in the "Speeding Up the Android Emulator on Intel Architecture" article available at <http://software.intel.com/en-us/android/articles/speeding-up-the-android-emulator-on-intel-architecture>. Particularly important is to configure AVD (see Section 2.5.3.2.1, "Configuring AVD for Intel HAXM").



If your development computer is running either Microsoft Windows 8.*n* or later, or Mac OS X 10.9.*n* or later, you have to apply a Hotfix provided by Intel before using emulator with the Intel HAXM.

---

---

**Note:** If you do not apply the Hotfix, your computer will freeze and you will lose your work.

---

---

To download the Hotfix, use the following locations:

- For Microsoft Windows:  
<http://software.intel.com/en-us/android/articles/intel-hardware-accelerated-execution-manager-end-user-license-agreement-windows-hotfix>
- Mac OS X:  
<http://software.intel.com/en-us/android/articles/intel-hardware-accelerated-execution-manager-end-user-license-agreement-macos-hotfix>

For more information, see the following:

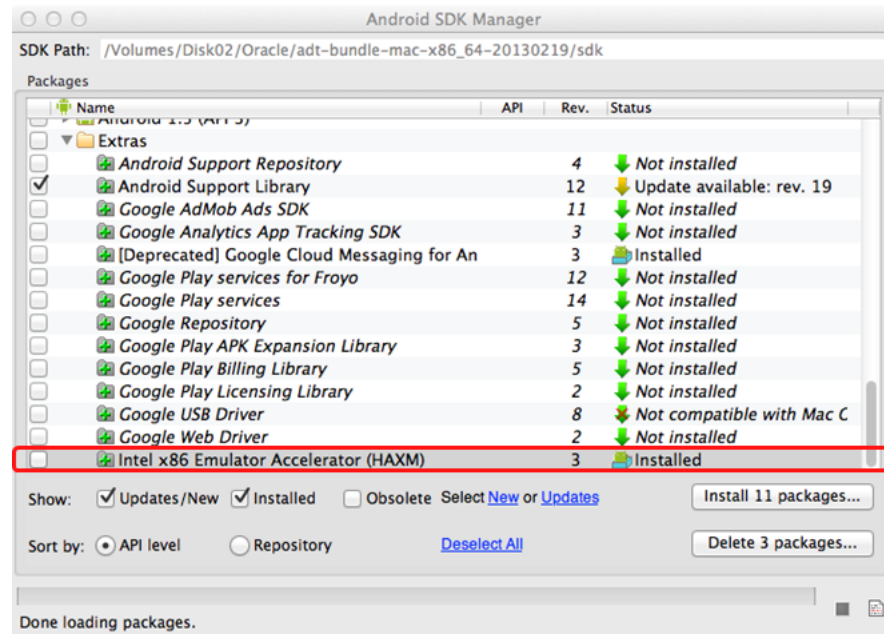
- *Installation Guide and System Requirements - Windows* at  
<http://software.intel.com/en-us/android/articles/installation-instructions-for-intel-hardware-accelerated-execution-manager-windows>
- *Installation Guide and System Requirements - Mac OS X* at  
<http://software.intel.com/en-us/android/articles/installation-instructions-for-intel-hardware-accelerated-execution-manager-mac-os-x>
- *Installation Guide and System Requirements - Linux* at  
<http://software.intel.com/en-us/blogs/2012/03/12/how-to-start-intel-hardware-assisted-virtualization-hypervisor-on-linux-to-speed-up-intel-android-x86-gingerbread-emulator>

**2.5.3.2.1 Configuring AVD for Intel HAXM** When enabling the Intel HAXM, ensure that you download the Intel system image for the Android API level using the Android SDK Manager (see [Figure 2-2](#)). As described in "Speeding Up the Android Emulator on Intel Architecture" article at <http://software.intel.com/en-us/android/articles/speeding-up-the-android-emulator-on-intel-architecture>:

- After you have installed the Android SDK, open the SDK Manager and then find the Intel HAXM in the extras section.
- Select **Intel x86 Emulator Accelerator (HAXM)** and click **Install packages**.

Once you have installed the package, the status changes to Installed, which is not accurate: the SDK only copies the Intel HAXM executable on your computer; you have to manually install the executable.

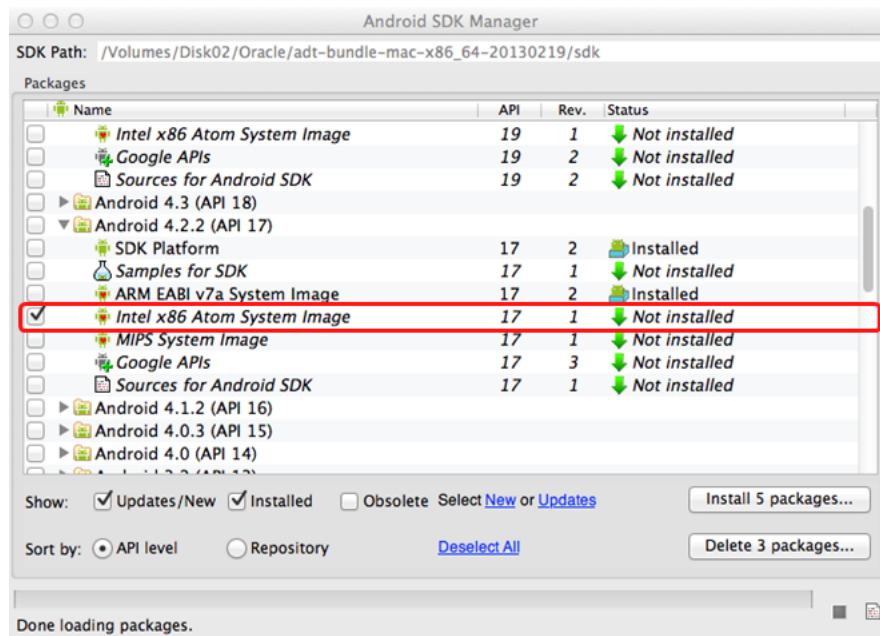


**Figure 2–3** Downloading Intel System Image in Android SDK Manager

- To install the Intel HAXM executable, depending on your development platform search your hard drive for one of the following:
  - On Windows, search for IntelHaxm.exe
  - On Mac OS X, search for IntelHaxm.dmg

If you accepted default settings, the executable should be located at `C:\Program Files\Android\android-sdk\extras\Intel\Hardware_Accelerated_Execution_Manager\IntelHaxm.exe` on Windows.

The Intel HAXM only functions in combination with one of the Intel Atom processor x86 system images, which are available for Android 2.3.3 (API 10), 4.0.3 (API 15), 4.1.2 (API 16), 4.2.2 (API 17). These system images can be installed exactly like the ARM-based images through the Android SDK Manager.

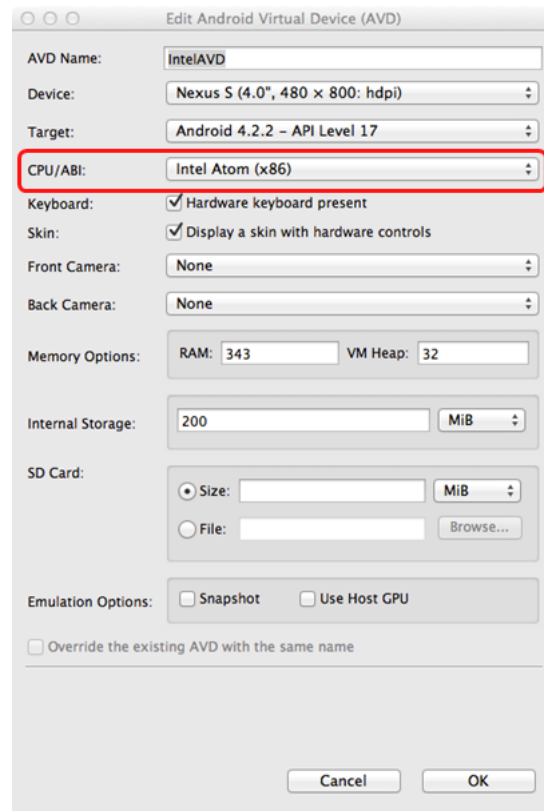
**Figure 2–4 Installing Intel Atom System Image**

To complete the process, use the AVD Manager to create a new virtual device that has hardware-accelerated emulation by selecting **Intel Atom (x86)** as the CPU/ABI, (see Figure 2–5).

---

**Note:** This option appears in the list only if you have the Intel x86 system image installed.

---


**Figure 2–5 Creating Accelerated AVD**

## 2.6 Testing the Environment Setup

You can test your environment setup as follows:

1. In OEPE, open the HelloWorld sample application by selecting **New > Example > MAF Examples**, then click to select the HelloWorld example and click **Finish**.
2. Select **Run > Debug Configurations** from the main menu.

For more information, see the "Deploying Mobile Applications" chapter in *Developing Mobile Applications with Oracle Mobile Application Framework (OEPE Edition)*.

3. From the configuration pane on the left of the Debug Configurations dialog, select MAF Application and click  to create a new configuration. If you set the environment following the instructions in [Section 2.3.2.1, "Configuring the Environment for Target Platforms"](#) correctly the dialog will show the correct target, as shown in [Figure 2–6](#).

Sometimes **Devices/Emulator** is not listed in the configuration, and clicking **Refresh** still does not display it. In this case, you need to kill and restart the adb daemon.

To kill the process, use:

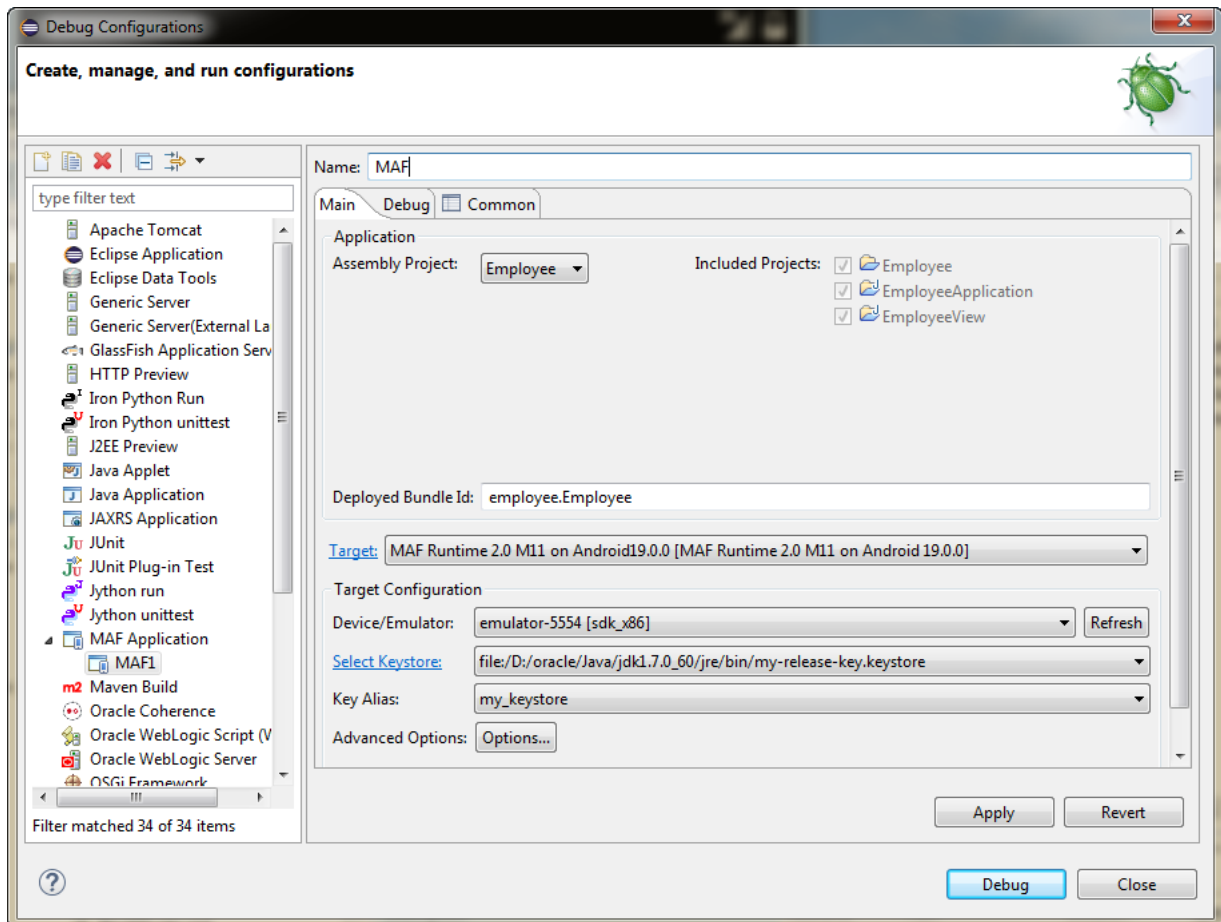
- Windows: use the process manager
- Mac terminal: use the `kill -9 procID` command

Restart the adb daemon by executing the following command on a terminal:

```
adb devices
```

A deployment that succeeded before adb froze will still be deployed. To debug an application, redeploy it.

**Figure 2–6** *Debug Configurations Dialog*



4. Click **Debug** to deploy the application to the target platform. When the deployment is complete, you will see a BUILD SUCCESSFUL message in the Log Window.

For more information, see one of the following sections in *Developing Mobile Applications with Oracle Mobile Application Framework (OEPE Edition)*:

- "How to Deploy an iOS Application to an iOS Simulator"
- "How to Deploy an Android Application to an Android Emulator"

For more information on deployment, see the "Deploying Mobile Applications" chapter in *Developing Mobile Applications with Oracle Mobile Application Framework (OEPE Edition)*.

After a successful deployment (which might take a few minutes), your iOS-powered device simulator or Android-powered device emulator will display the HelloWorld application icon that you have to activate to launch the application.

---

## Migrating Your Application to MAF 2.2.0

This chapter provides information about migrating applications created using earlier releases of MAF to MAF 2.2.0.

This chapter includes the following sections:

- [Migrating an Application to MAF 2.2.0](#)
- [Migrating to JDK 8 in MAF 2.2.0](#)
- [Migrating Cordova Plugins from Earlier Releases to MAF 2.2.0](#)
- [Configuring your Migrated MAF Application to Use the Full Screen on iOS Devices](#)
- [Retaining Legacy Behavior When Navigating a MAF Application Using Android's Back Button](#)
- [Migrating to a New cacerts File for SSL in MAF 2.2.0](#)

### 3.1 Migrating an Application to MAF 2.2.0

The MAF 2.1.0 release introduced significant changes described in this chapter. Use the information in this chapter if you migrate an application created in a pre-MAF 2.1.0 release to MAF 2.2.0. If you migrate an application to MAF 2.2.0 that was created in MAF 2.1.0 or previously migrated to MAF 2.1.0, MAF will have made already made the changes required by migration to JDK 8, management of Cordova plugins, and a new cacerts file.

For MAF applications that you migrate to MAF 2.2.0 (irrespective of the release from which you migrate), we recommend that you set the preemptive property to `true` on the following security policies:

- `http_basic_auth_over_ssl_client_policy`
- `wss_http_token_client_policy`
- `wss_http_token_over_ssl_client_policy`

Setting the preemptive property to `true` on these policies inserts a basic authentication header into the first request to a secured REST web service.

Also, if your MAF application uses Web SSO authentication, you must configure the `oracle/http_cookie_client_policy` security policy for all REST/HTTP web service connections used by the application. Without this change, your end users may see errors when accessing services in the application.

For more information, see the "Specifying REST Service Connections" section in *Developing Mobile Applications with Oracle Mobile Application Framework (OEPE Edition)*.

MAF 2.1.0 used newer versions of Apache Cordova and Java. It also changed the way that OEPE registered plugins in your MAF application. For SSL, it delivers a cacerts file that contains new CA root certificates.

Read the subsequent sections in this chapter that describe how these changes impact the migration of your MAF application to MAF 2.1.0 or later.

Finally, MAF 2.1.0 delivered an updated SQLite database and JDBC driver. Review, and migrate as necessary, any code in your migrated MAF application that connects to the SQLite database. For more information about how to connect to the SQLite database, see the "Using the Local SQLite Database" section in *Developing Mobile Applications with Oracle Mobile Application Framework (OEPE Edition)*.

## 3.2 Migrating to JDK 8 in MAF 2.2.0

MAF applications that you create in MAF 2.1.0 and later use JDK 8. If you migrate a MAF application that compiled with an earlier version of Java, note that MAF 2.1.0 and later requires JDK 8 and compiles applications using the Java SE Embedded 8 compact2 profile. When you open an application that you migrated from a pre-MAF 2.1.0 release in MAF 2.2.0 for the first time, OEPE makes the following changes:

- Renames the configuration file that specifies the startup parameters of the JVM from `cvm.properties` to `maf.properties`. For more information about the `maf.properties` file, see "How to Enable Debugging of Java Code and JavaScript" in *Developing Mobile Applications with Oracle Mobile Application Framework (OEPE Edition)*.
- Replaces instances (if any) of the following import statement in the application's Java source files:

```
com.sun.util.logging
```

With:

```
java.util.logging
```

- Replaces the following entries in the application's `logging.properties` file

```
.handlers=com.sun.util.logging.ConsoleHandler  
.formatter=com.sun.util.logging.SimpleFormatter
```

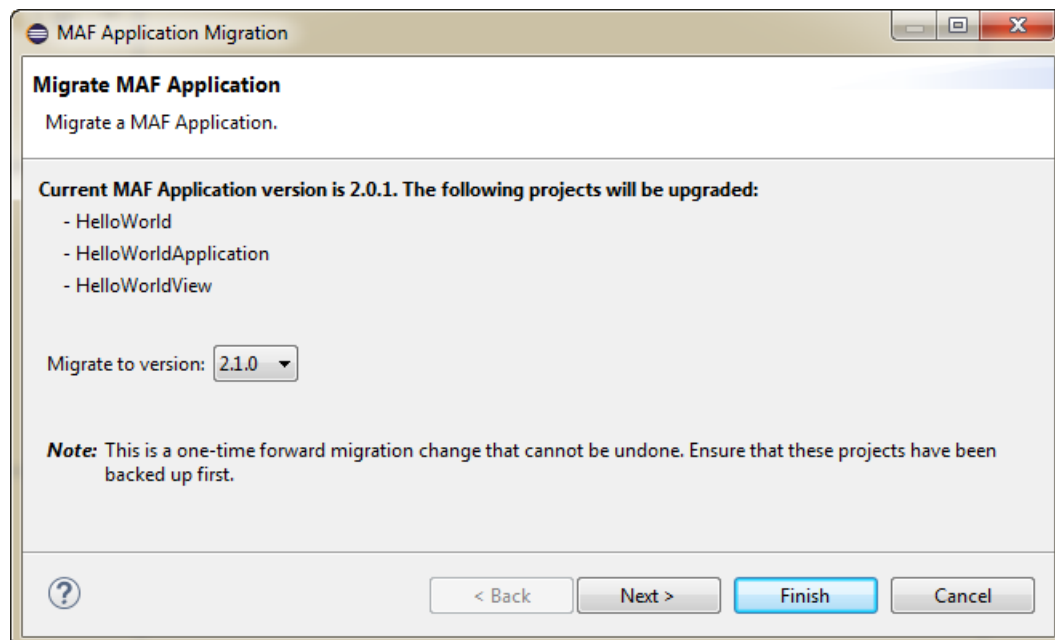
With:

```
.handlers=java.util.logging.ConsoleHandler  
.formatter=java.util.logging.SimpleFormatter
```

For more information about the `logging.properties` file, see "How to Configure Logging Using the Properties File" in *Developing Mobile Applications with Oracle Mobile Application Framework (OEPE Edition)*.

## 3.3 Migrating Cordova Plugins from Earlier Releases to MAF 2.2.0

Using the OEPE migration wizard, shown in [Figure 3–1](#), you can migrate from earlier versions of MAF. For example, if you have a MAF 2.0.0 application you can choose to migrate it to a later version of MAF, such as MAF 2.1.0.

**Figure 3–1 Migration Wizard**

### 3.3.1 How to Migrate an Application

OEPE has a migration wizard that makes it easy to migrate your application. You can choose to migrate to any available version using the wizard.

To migrate an application:

1. Open the application in OEPE.
2. Right click the assembly project and choose **Configure > Migrate MAF Application**. The migration wizard opens.
3. Select the MAF version you want to migrate to and click Next.
4. The Configure Deployments page of the wizard shows that the initial deployment is disabled. Click **Add** to add a new deployment target. Click **Finish**.

#### 3.3.1.1 What Happens When you Migrate an Application

MAF applications developed using earlier releases of MAF registered plugins in the MAF Application Editor. This release of MAF registers plugins in the same editor, but due to changes to Apache Cordova the functionality is different.

Examine the application once it has migrated and make any appropriate changes. For example, enable additional core plugins and register external plugins in the MAF Application Editor, and specify the plugins used by features in the MAF Features Editor. For more information, see "Using Plugins in MAF Applications" in *Developing Mobile Applications with Oracle Mobile Application Framework (OEPE Edition)*.

To complete the migration and make sure that your migrated MAF application can use the plugins it used previously, verify that the:

- Version of the plugin is supported by MAF.
- MAF applications in 2.2.0 use Cordova 3.7.2 on Android and Cordova 3.8.0 on iOS.
- Obtain a newer version of the plugin if the plugin was created using an earlier release of Cordova.

## 3.4 Configuring your Migrated MAF Application to Use the Full Screen on iOS Devices

MAF applications that you create using the MAF 2.2.0 release and later use the full screen by default on devices running iOS 7 or later.

This means that the iOS device's status bar appears on top of the content rendered by the MAF application. Content from the MAF application appears overlaid by the status icons of the status bar, as shown in [Figure 3-2](#). This happens because the iOS device's status bar's background is transparent. In [Figure 3-2](#), a MAF application's yellow panel header component appears overlaid by the status bar's information about network, time, and battery.

The status bar that renders in an iOS device supports two styles: light and dark. MAF provides APIs to get and set the status bar style on the iOS device so that it renders appropriately when the MAF application renders in the background. Apply the light style to the status bar when the status bar renders on a MAF application with a dark background. Apply the dark style to the status bar when the status bar renders on a light background.

MAF provides the following JavaScript methods to get and set the style of your MAF application on an iOS device:

```
adf.mf.api.getStatusBarStyle = function(callback)
adf.mf.api.setStatusBarStyle = function(style, callback)
```

For more information about these methods, see *JSDoc Reference for Oracle Mobile Application Framework*.

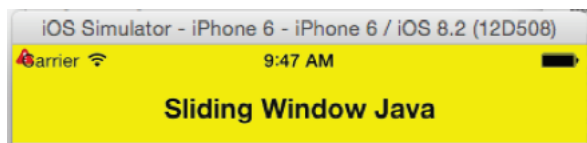
MAF also provides the following Java methods in `oracle.adfmf.framework.api.AdfmfContainerUtilities` that you can use to set the status bar style from a managed bean or lifecycle listener in your MAF application.

```
getStatusBarStyle()
setStatusBarStyle(AdfmfContainerUtilities.STATUS_BAR_STYLE color)
```

For more information about these methods, see *Java API Reference for Oracle Mobile Application Framework*.

The MAF application ignores these methods on non-iOS devices. For more information about using Java and JavaScript APIs in your MAF application, see the "Local HTML and Application Container APIs" appendix in *Developing Mobile Applications with Oracle Mobile Application Framework (OEPE Edition)*.

**Figure 3-2 MAF Application Using the Full Screen on an iOS Device**



MAF applications migrated to MAF 2.2.0 do not exhibit the just-described behavior. Instead, the iOS device's status bar appears above the MAF application. You can configure a MAF application that you migrate to MAF 2.2.0 to use the full screen on devices running iOS 7 or later.



### 3.4.1 How to Configure your Migrated MAF Application to Use an iOS Device's Full Screen

You configure a MAF application that you migrate to MAF 2.2.0 to use the full screen on a device running iOS 7 or later by setting the `<fullscreenLayout>` element in the `maf-config.xml` file.

To configure a migrated MAF application to use the full screen on an iOS device, make sure that the `maf-config.xml` file for your application is configured as follows:

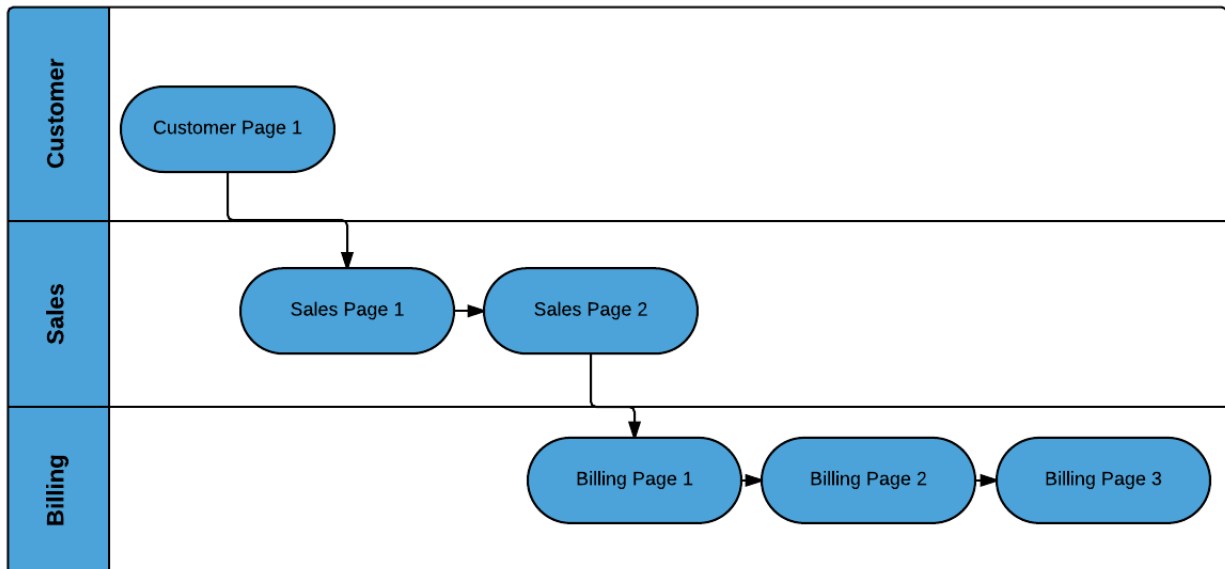
```
<adfmf-config xmlns="http://xmlns.oracle.com/adf/mf/config">
  ....
  <fullscreenLayout>fullscreen</fullscreenLayout>
</adfmf-config>
```

## 3.5 Retaining Legacy Behavior When Navigating a MAF Application Using Android's Back Button

MAF 2.2.0 introduces a change in the way that MAF applications created using this release respond to usage of the Android system's Back button. A MAF application that you created in a previous release and migrate to MAF 2.2.0 or later uses the new behavior.

Figure 3–3 shows a navigation flow on a MAF application where an end user has navigated between three application features (Customer, Sales, and Billing) to the Billing Page 3 page of the Billing application feature.

**Figure 3–3** Navigation Flow Between Application Features and Pages in a MAF Application



Prior to Release MAF 2.2.0, the default MAF application behavior in response to an end user tapping Android's system Back button on:

- Billing Page 3 was to navigate to the Sales application feature
- Sales application feature was to navigate to the Customers application feature
- Customer application feature was to hibernate the MAF application

In MAF 2.2.0 and later, the default MAF application behavior in response to an end user tapping Android's system Back button on:

- Billing Page 3 is to navigate to Billing Page 2
- Billing Page 2 is to navigate to Billing Page 1
- Billing Page 1 is to hibernate the MAF application

You can customize how your MAF application responds to an end user's tap of the Android system's Back button, as described in *Developing Mobile Applications with Oracle Mobile Application Framework (OEPE Edition)*.

### 3.5.1 How to Retain Pre-MAF 2.2.0 Application Behavior in Response to Usage of Android's Back Button

You configure the `legacyBack` element in the `maf-config.xml` file to make your MAF application exhibit pre-MAF 2.2.0 behavior when an end user taps Android's Back button.

To retain pre-MAF 2.2.0 application behavior in response to usage of Android's Back button, make sure that the `maf-config.xml` file for your application is configured as follows:

```
<admf-config xmlns="http://xmlns.oracle.com/adf/mf/config">
  . . . .
  <legacyBack>true</legacyBack>
</admf-config>
```

## 3.6 Migrating to a New cacerts File for SSL in MAF 2.2.0

Make sure that the `cacerts` file packaged in the MAF application that you publish for your end users to install contains the same CA root certificates as the HTTPS server that end users connect to when they use your MAF application.

You may need to import new certificates to your MAF application's `cacerts` file if the HTTPS server contains certificates not present in your MAF application's `cacerts` file. Similarly, system administrators for the HTTPS servers that your MAF application connects to may need to import new certificates if your MAF application uses a certificate not present on the HTTPS server.

Use JDK 8's `keytool` utility to view and manage the certificates in your MAF application's `cacerts` file. The following example demonstrates how you might use JDK 8's `keytool` utility to display the list of certificates in a `cacerts` file:

```
JDK8install/bin/keytool -list -v -keystore dirPathToCacertsFile/cacerts
-storepass changeit | grep "Issuer:"
```

For more information about using the JDK 8's `keytool` utility to manage certificates, see <http://docs.oracle.com/javase/8/docs/technotes/tools/#security>. For example, to use the `keytool` utility on Windows, see <http://docs.oracle.com/javase/8/docs/technotes/tools/windows/keytool.html>. For UNIX-based operating systems, see <http://docs.oracle.com/javase/8/docs/technotes/tools/unix/keytool.html>.

For more information about the `cacerts` file and using SSL to secure your MAF application, see "Supporting SSL" in *Developing Mobile Applications with Oracle Mobile Application Framework (OEPE Edition)*.

Use JDK 8's keytool utility, as previously described, to manage the certificates in MAF 2.1.0's cacerts file to meet the requirements of the environment where your MAF application will be used. The cacerts file lists the issuers of CA root certificates:

```

Issuer: CN=DigiCert Assured ID Root CA, OU=www.digicert.com, O=DigiCert Inc, C=US
Issuer: CN=TC TrustCenter Class 2 CA II, OU=TC TrustCenter Class 2 CA, O=TC TrustCenter GmbH, C=DE
Issuer: EMAILADDRESS=premium-server@thawte.com, CN=Thawte Premium Server CA, OU=Certification
Services Division, O=Thawte Consulting cc, L=Cape Town, ST=Western Cape, C=ZA
Issuer: CN=SwissSign Platinum CA - G2, O=SwissSign AG, C=CH
Issuer: CN=SwissSign Silver CA - G2, O=SwissSign AG, C=CH
Issuer: EMAILADDRESS=server-certs@thawte.com, CN=Thawte Server CA, OU=Certification Services
Division, O=Thawte Consulting cc, L=Cape Town, ST=Western Cape, C=ZA
Issuer: CN=Equifax Secure eBusiness CA-1, O=Equifax Secure Inc., C=US
Issuer: CN=SecureTrust CA, O=SecureTrust Corporation, C=US
Issuer: CN=UTN-USERFirst-Client Authentication and Email, OU=http://www.usertrust.com, O=The
USERTRUST Network, L=Salt Lake City, ST=UT, C=US
Issuer: EMAILADDRESS=personal-freemail@thawte.com, CN=Thawte Personal Freemail CA, OU=Certification
Services Division, O=Thawte Consulting, L=Cape Town, ST=Western Cape, C=ZA
Issuer: CN=AffirmTrust Networking, O=AffirmTrust, C=US
Issuer: CN=Entrust Root Certification Authority, OU="(c) 2006 Entrust, Inc.",
OU=www.entrust.net/CPS is incorporated by reference, O="Entrust, Inc.", C=US
Issuer: CN=UTN-USERFirst-Hardware, OU=http://www.usertrust.com, O=The USERTRUST Network, L=Salt
Lake City, ST=UT, C=US
Issuer: CN=Certum CA, O=Unizeto Sp. z o.o., C=PL
Issuer: CN=AddTrust Class 1 CA Root, OU=AddTrust TTP Network, O=AddTrust AB, C=SE
Issuer: CN=Entrust Root Certification Authority - G2, OU="(c) 2009 Entrust, Inc. - for authorized
use only", OU=See www.entrust.net/legal-terms, O="Entrust, Inc.", C=US
Issuer: OU=Equifax Secure Certificate Authority, O=Equifax, C=US
Issuer: CN=QuoVadis Root CA 3, O=QuoVadis Limited, C=BM
Issuer: CN=QuoVadis Root CA 2, O=QuoVadis Limited, C=BM
Issuer: CN=DigiCert High Assurance EV Root CA, OU=www.digicert.com, O=DigiCert Inc, C=US
Issuer: EMAILADDRESS=info@valicert.com, CN=http://www.valicert.com/, OU=ValiCert Class 1 Policy
Validation Authority, O="ValiCert, Inc.", L=ValiCert Validation Network
Issuer: CN=Equifax Secure Global eBusiness CA-1, O=Equifax Secure Inc., C=US
Issuer: CN=GeoTrust Universal CA, O=GeoTrust Inc., C=US
Issuer: OU=Class 3 Public Primary Certification Authority, O="VeriSign, Inc.", C=US
Issuer: CN=thawte Primary Root CA - G3, OU="(c) 2008 thawte, Inc. - For authorized use only",
OU=Certification Services Division, O="thawte, Inc.", C=US
Issuer: CN=thawte Primary Root CA - G2, OU="(c) 2007 thawte, Inc. - For authorized use only",
O="thawte, Inc.", C=US
Issuer: CN=Deutsche Telekom Root CA 2, OU=T-TeleSec Trust Center, O=Deutsche Telekom AG, C=DE
Issuer: CN=Buypass Class 3 Root CA, O=Buypass AS-983163327, C=NO
Issuer: CN=UTN-USERFirst-Object, OU=http://www.usertrust.com, O=The USERTRUST Network, L=Salt Lake
City, ST=UT, C=US
Issuer: CN=GeoTrust Primary Certification Authority, O=GeoTrust Inc., C=US
Issuer: CN=Buypass Class 2 Root CA, O=Buypass AS-983163327, C=NO
Issuer: CN=Baltimore CyberTrust Code Signing Root, OU=CyberTrust, O=Baltimore, C=IE
Issuer: OU=Class 1 Public Primary Certification Authority, O="VeriSign, Inc.", C=US
Issuer: CN=Baltimore CyberTrust Root, OU=CyberTrust, O=Baltimore, C=IE
Issuer: OU=Starfield Class 2 Certification Authority, O="Starfield Technologies, Inc.", C=US
Issuer: CN=Chambers of Commerce Root, OU=http://www.chambersign.org, O=AC Camerfirma SA CIF
A82743287, C=EU
Issuer: CN=T-TeleSec GlobalRoot Class 3, OU=T-Systems Trust Center, O=T-Systems Enterprise Services
GmbH, C=DE
Issuer: CN=VeriSign Class 3 Public Primary Certification Authority - G5, OU="(c) 2006 VeriSign,
Inc. - For authorized use only", OU=VeriSign Trust Network, O="VeriSign, Inc.", C=US
Issuer: CN=T-TeleSec GlobalRoot Class 2, OU=T-Systems Trust Center, O=T-Systems Enterprise Services
GmbH, C=DE
Issuer: CN=TC TrustCenter Universal CA I, OU=TC TrustCenter Universal CA, O=TC TrustCenter GmbH,
C=DE

```

Issuer: CN=VeriSign Class 3 Public Primary Certification Authority - G4, OU="(c) 2007 VeriSign, Inc. - For authorized use only", OU=VeriSign Trust Network, O="VeriSign, Inc.", C=US  
Issuer: CN=VeriSign Class 3 Public Primary Certification Authority - G3, OU="(c) 1999 VeriSign, Inc. - For authorized use only", OU=VeriSign Trust Network, O="VeriSign, Inc.", C=US  
Issuer: CN=XRamp Global Certification Authority, O=XRamp Security Services Inc, OU=www.xrampsecurity.com, C=US  
Issuer: CN=Class 3P Primary CA, O=Certplus, C=FR  
Issuer: CN=Certum Trusted Network CA, OU=Certum Certification Authority, O=Unizeto Technologies S.A., C=PL  
Issuer: OU=VeriSign Trust Network, OU="(c) 1998 VeriSign, Inc. - For authorized use only", OU=Class 3 Public Primary Certification Authority - G2, O="VeriSign, Inc.", C=US  
Issuer: CN=GlobalSign, O=GlobalSign, OU=GlobalSign Root CA - R3  
Issuer: CN=UTN - DATACorp SGC, OU=http://www.usertrust.com, O=The USERTRUST Network, L=Salt Lake City, ST=UT, C=US  
Issuer: OU=Security Communication RootCA2, O="SECOM Trust Systems CO.,LTD.", C=JP  
Issuer: CN=GTE CyberTrust Global Root, OU="GTE CyberTrust Solutions, Inc.", O=GTE Corporation, C=US  
Issuer: OU=Security Communication RootCA1, O=SECOM Trust.net, C=JP  
Issuer: CN=AffirmTrust Commercial, O=AffirmTrust, C=US  
Issuer: CN=TC TrustCenter Class 4 CA II, OU=TC TrustCenter Class 4 CA, O=TC TrustCenter GmbH, C=DE  
Issuer: CN=VeriSign Universal Root Certification Authority, OU="(c) 2008 VeriSign, Inc. - For authorized use only", OU=VeriSign Trust Network, O="VeriSign, Inc.", C=US  
Issuer: CN=GlobalSign, O=GlobalSign, OU=GlobalSign Root CA - R2  
Issuer: CN=Class 2 Primary CA, O=Certplus, C=FR  
Issuer: CN=DigiCert Global Root CA, OU=www.digicert.com, O=DigiCert Inc, C=US  
Issuer: CN=GlobalSign Root CA, OU=Root CA, O=GlobalSign nv-sa, C=BE  
Issuer: CN=thawte Primary Root CA, OU="(c) 2006 thawte, Inc. - For authorized use only", OU=Certification Services Division, O="thawte, Inc.", C=US  
Issuer: CN=Starfield Root Certificate Authority - G2, O="Starfield Technologies, Inc.", L=Scottsdale, ST=Arizona, C=US  
Issuer: CN=GeoTrust Global CA, O=GeoTrust Inc., C=US  
Issuer: CN=Sonera Class2 CA, O=Sonera, C=FI  
Issuer: CN=Thawte Timestamping CA, OU=Thawte Certification, O=Thawte, L=Durbanville, ST=Western Cape, C=ZA  
Issuer: CN=Sonera Class1 CA, O=Sonera, C=FI  
Issuer: CN=QuoVadis Root Certification Authority, OU=Root Certification Authority, O=QuoVadis Limited, C=BM  
Issuer: CN=AffirmTrust Premium ECC, O=AffirmTrust, C=US  
Issuer: CN=Starfield Services Root Certificate Authority - G2, O="Starfield Technologies, Inc.", L=Scottsdale, ST=Arizona, C=US  
Issuer: EMAILADDRESS=info@valicert.com, CN=http://www.valicert.com/, OU=ValiCert Class 2 Policy Validation Authority, O="ValiCert, Inc.", L=ValiCert Validation Network  
Issuer: CN=AAA Certificate Services, O=Comodo CA Limited, L=Salford, ST=Greater Manchester, C=GB  
Issuer: CN=America Online Root Certification Authority 2, O=America Online Inc., C=US  
Issuer: CN=AddTrust Qualified CA Root, OU=AddTrust TTP Network, O=AddTrust AB, C=SE  
Issuer: CN=KEYNECTIS ROOT CA, OU=ROOT, O=KEYNECTIS, C=FR  
Issuer: CN=America Online Root Certification Authority 1, O=America Online Inc., C=US  
Issuer: CN=VeriSign Class 2 Public Primary Certification Authority - G3, OU="(c) 1999 VeriSign, Inc. - For authorized use only", OU=VeriSign Trust Network, O="VeriSign, Inc.", C=US  
Issuer: CN=AddTrust External CA Root, OU=AddTrust External TTP Network, O=AddTrust AB, C=SE  
Issuer: OU=VeriSign Trust Network, OU="(c) 1998 VeriSign, Inc. - For authorized use only", OU=Class 2 Public Primary Certification Authority - G2, O="VeriSign, Inc.", C=US  
Issuer: CN=GeoTrust Primary Certification Authority - G3, OU=(c) 2008 GeoTrust Inc. - For authorized use only, O=GeoTrust Inc., C=US  
Issuer: CN=GeoTrust Primary Certification Authority - G2, OU=(c) 2007 GeoTrust Inc. - For authorized use only, O=GeoTrust Inc., C=US  
Issuer: CN=SwissSign Gold CA - G2, O=SwissSign AG, C=CH  
Issuer: CN=Entrust.net Certification Authority (2048), OU=(c) 1999 Entrust.net Limited, OU=www.entrust.net/CPS\_2048 incorp. by ref. (limits liab.), O=Entrust.net  
Issuer: OU=ePKI Root Certification Authority, O="Chunghwa Telecom Co., Ltd.", C=TW

Issuer: CN=Global Chambersign Root - 2008, O=AC Camerfirma S.A., SERIALNUMBER=A82743287, L=Madrid  
(see current address at [www.camerfirma.com/address](http://www.camerfirma.com/address)), C=EU  
Issuer: CN=Chambers of Commerce Root - 2008, O=AC Camerfirma S.A., SERIALNUMBER=A82743287, L=Madrid  
(see current address at [www.camerfirma.com/address](http://www.camerfirma.com/address)), C=EU  
Issuer: OU=Go Daddy Class 2 Certification Authority, O="The Go Daddy Group, Inc.", C=US  
Issuer: CN=AffirmTrust Premium, O=AffirmTrust, C=US  
Issuer: CN=VeriSign Class 1 Public Primary Certification Authority - G3, OU="(c) 1999 VeriSign,  
Inc. - For authorized use only", OU=VeriSign Trust Network, O="VeriSign, Inc.", C=US  
Issuer: OU=Security Communication EV RootCA1, O="SECOM Trust Systems CO.,LTD.", C=JP  
Issuer: OU=VeriSign Trust Network, OU="(c) 1998 VeriSign, Inc. - For authorized use only", OU=Class  
1 Public Primary Certification Authority - G2, O="VeriSign, Inc.", C=US  
Issuer: CN=Go Daddy Root Certificate Authority - G2, O="GoDaddy.com, Inc.", L=Scottsdale,  
ST=Arizona, C=US

