

Oracle® Fusion Middleware

Using the Ariba Adapter

Release 12c (12.2.1.4.0)

F30845-03

January 2023

Oracle Fusion Middleware Using the Ariba Adapter, Release 12c (12.2.1.4.0)

F30845-03

Copyright © 2020, 2023 Oracle and/or its affiliates. All rights reserved.

Primary Author: Sunil Kumar

Contributors: Ranga Reddy Mekala, Shubham Baburao Shirure, Arpit Gupta, Ramya S, Ashok Kumar Reddy Nekkanti, and K Rajendra Prasad

This software and related documentation are provided under a license agreement containing restrictions on use and disclosure and are protected by intellectual property laws. Except as expressly permitted in your license agreement or allowed by law, you may not use, copy, reproduce, translate, broadcast, modify, license, transmit, distribute, exhibit, perform, publish, or display any part, in any form, or by any means. Reverse engineering, disassembly, or decompilation of this software, unless required by law for interoperability, is prohibited.

The information contained herein is subject to change without notice and is not warranted to be error-free. If you find any errors, please report them to us in writing.

If this software or related documentation is delivered to the U.S. Government or anyone licensing it on behalf of the U.S. Government, the following notice is applicable:

U.S. GOVERNMENT RIGHTS Programs, software, databases, and related documentation and technical data delivered to U.S. Government customers are "commercial computer software" or "commercial technical data" pursuant to the applicable Federal Acquisition Regulation and agency-specific supplemental regulations. As such, the use, duplication, disclosure, modification, and adaptation shall be subject to the restrictions and license terms set forth in the applicable Government contract, and, to the extent applicable by the terms of the Government contract, the additional rights set forth in FAR 52.227-19, Commercial Computer Software License (December 2007). Oracle USA, Inc., 500 Oracle Parkway, Redwood City, CA 94065.

This software is developed for general use in a variety of information management applications. It is not developed or intended for use in any inherently dangerous applications, including applications which may create a risk of personal injury. If you use this software in dangerous applications, then you shall be responsible to take all appropriate fail-safe, backup, redundancy, and other measures to ensure the safe use of this software. Oracle Corporation and its affiliates disclaim any liability for any damages caused by use of this software in dangerous applications.

Oracle is a registered trademark of Oracle Corporation and/or its affiliates. Other names may be trademarks of their respective owners.

This software and documentation may provide access to or information on content, products, and services from third parties. Oracle Corporation and its affiliates are not responsible for and expressly disclaim all warranties of any kind with respect to third-party content, products, and services. Oracle Corporation and its affiliates will not be responsible for any loss, costs, or damages incurred due to your access to or use of third-party content, products, or services.

Contents

Contents.....	1-3
Preface.....	1-5
1. Introduction to the Ariba Adapter.....	1-6
Differences Between Using this Component in the Cloud and On-Premises Environments.....	1-6
About the Ariba Adapter.....	1-6
Ariba Adapter Use Case	1-7
Pre-requisites.....	1-7
About Ariba Integration Methods.....	1-8
Currently Supported Integration Methods.....	1-8
Enabling the Integration Task in Ariba.....	1-8
Generating a WSDL File to Call Ariba with the SOAP Adapter.....	1-10
Installing the Cloud Adapters.....	1-11
Performing Postinstallation Configuration Tasks.....	1-11
Obtaining the Authentication Credentials.....	1-11
Unsupported Features	1-12
2. Creating an Ariba Adapter Connection.....	2-13
Designing an Integration with the Adapter Configuration Wizard	2-13
Monitoring Your Application During Runtime	2-16
Artifacts Creation	2-16
3. Designing SOA Composite Applications.....	3-17
Creating a SOA Composite Application.....	3-17
Adding an Adapter to a SOA Composite Application as a Reference	3-18
Completing Design of a SOA Composite Application.....	3-18
4. Designing Oracle Service Bus Business Services.....	4-20
Creating an Oracle Service Bus Business Service	4-20
Adding an Adapter to a Business Service as a Reference	4-20
Completing Design of an Oracle Service Bus Business Service	4-21
5. Configuring Ariba Adapter Properties	5-23

Configuring Basic Information Properties.....	5-23
What You Can Do from the Basic Info Page.....	5-23
What You See on the Basic Info Page	5-24
Configuring Oracle Cloud Adapter Connection and CSF Key Properties.....	5-24
What You Can Do from the Oracle Cloud Adapter Connection Page	5-24
What You See on the Oracle Cloud Adapter Connection Page.....	5-25
What You Can Do from the Oracle Cloud Adapter CSF Key Page	5-25
What You See on the Oracle Cloud Adapter CSF Key Page.....	5-25
Configuring Ariba Adapter Invoke Operation Properties	5-26
What You Can Do from the Ariba Adapter Invoke Operations Page	5-26
What You See on the Ariba Adapter Invoke Operations Page.....	5-26
Reviewing Configuration Values on the Summary Page.....	5-27
What You Can Do from the Summary Page	5-27
What You See on the Summary Page	5-28
6. Managing Applications	6-29
Managing the Application in Oracle Enterprise Manager Fusion Middleware Control.....	6-29
Testing Oracle Service Bus Business Services from Oracle Service Bus Console	6-29
7. Troubleshooting.....	7-31

Preface

Using the Ariba Adapter describes how to use the Ariba Adapter in your SOA composite applications and Oracle Service Bus business services.

This section consists of the following topics:

- [Audience](#)
- [Related Resources](#)
- [Conventions](#)

Audience

Using the Ariba Adapter is intended for users who want to create, deploy, test, and monitor applications that use the Ariba Adapter.

Related Resources

For more information, see these Oracle Resources:

- *Developing SOA Applications with Oracle SOA Suite*
- *Administering Oracle SOA Suite and Oracle Business Process Management Suite*
- *Administering Oracle Service Bus*
- *Understanding Technology Adapters*

Conventions

The following text conventions are used in this document:

Convention	Meaning
boldface	Boldface type indicates graphical user interface elements associated with an action, or terms defined in text or the glossary.
<i>italic</i>	Italic type indicates book titles, emphasis, or placeholder variables for which you supply particular values.
monospace	Monospace type indicates commands within a paragraph, URLs, code in examples, text that appears on the screen, or text that you enter.

Introduction to the Ariba Adapter

This chapter consists of the following sections:

- [Differences Between Using this Component in the Cloud and On-Premises Environments](#)
- [About the Ariba Adapter](#)
- [Ariba Adapter Use Case](#)
- [Prerequisites](#)
- [About Ariba Integration Methods](#)
- [Currently Supported Integrations Methods](#)
- [Enabling Integrations Task in Ariba](#)
- [Generating a WSDL File to call Ariba with SOAP adapter](#)
- [Installing the Cloud Adapters](#)
- [Performing Postinstallation Configuration Tasks](#)
- [Obtaining the Authentication Credentials](#)
- [Unsupported Features](#)

Differences Between Using this Component in the Cloud and On-Premises Environments

There may be differences between using this component in the cloud and on-premises environments that impact the information described in this guide.

For information about differences, see [Differences Between the Cloud and On Premises Environments](#) and [Known Issues for Oracle SOA Cloud Service](#).

About the Ariba Adapter

Ariba is a SaaS-based application that integrates and automates B2B Procurement processes with Ariba solutions. The Ariba Adapter enables you to do B2B transactions between buyers and suppliers and it also allows you to import and export master and transactional data integration between ERP Systems and Ariba Procurement Solution P2P or P2O.

Ariba is a Cloud based B2B marketplace where buyer and supplier can find each other and can do business with each other on a single platform. Ariba comes mainly as a Buyer and Supplier Network Module where each one of them can do business. A buyer can search about the supplier, procure

goods and services and track spend. Suppliers can manage their catalogs, purchases, bids and invoices.

Ariba is the best solution for today's increasing businesses and for manufacturing companies to have a close collaboration with their partners, resource vendors and customers. This requires sharing information, real-time status reports and documents as well as collaborating on critical business processes like procurement, e-Commerce, e-invoicing, and other operations. SAP Ariba is the marketplace for modern business, creating simple, intelligent exchanges between millions of buyers and sellers.

The Ariba Adapter enables you to create an integration with an Ariba Buyer SaaS application. This cloud adapter framework securely connects and integrates data only with the Ariba Buyer system.

The Ariba Adapter for Oracle SOA Middleware is used for implementation of round-trip communication between ERP systems and Ariba.

The Ariba Adapter allows integration of Ariba Procurement solution with ERP system and allows administrators to import master data and export transactional data from any ERP systems to a procurement system seamlessly.

Ariba Adapter Use Case

This use case describes how a Manufacturing company used the Ariba Adapter to simplify supply chain management, reduce order complexity, and improve the efficiency of supply operations.

- A customer makes an online purchase of a Material produced by the Manufacturing company.
- The Ariba Adapter sends the purchase request to the Manufacturing company.
- The Manufacturing company locates the requested Material and prepares it for shipment.
- The Manufacturing company uses the Ariba Adapter to inform the customer that the purchase has been shipped and provides tracking information.
- The Ariba Adapter updates the inventory information for the product ordered by the customer.
- The real-time integration patterns supported by the adapter can be either Web service based or ITK based.
- The adapter can handle all types of sourcing and Procurement flows that are used in manufacturing companies, to import and export the master and transactional data between Ariba and ERP systems.

Prerequisites

To use the Ariba Adapter:

- You must have Ariba user account and credentials for creating CSF key in SOA.
- Based on this security key, you can call the Ariba Application from SOA.

Note: The system administrator should provide the permission and credentials for creating CSF key in SOA.

Application Support

- The Ariba Adapter is compatible with Ariba Spend Management version:15.

- The adapter is compatible with all versions of cloud releases of different modules starting from Apr 2015. The supported modules are:
 - Procure to Pay
 - Ariba Sourcing

About Ariba Integration Methods

The Ariba Application supports three types of methods to integrate data.

- File-based integration (ITK)
- Web Service based integration
- Ariba Network

File-based integration (ITK)

Ariba ITK (Integration Tool Kit) allows buyers to integrate Ariba with any ERP system to exchange master and transactional data via CSV file upload and download.

Web Service based integration

It is a direct connectivity to Ariba, based on WSDL we will develop the APIS and we can directly connect Ariba Application to upload and download master and transactional data, Ariba SOAP web services use the W3C SOAP messaging framework to exchange messages over HTTP or HTTPS.

The Ariba Integration Manager generates descriptions of the Ariba SOAP web services operations in the Web Services Description Language (WSDL), an XML-based language. Typically, developers on the EAI system use the WSDL descriptions when creating Integrations to communicate with Ariba SOAP web services.

Currently Supported Integration Methods

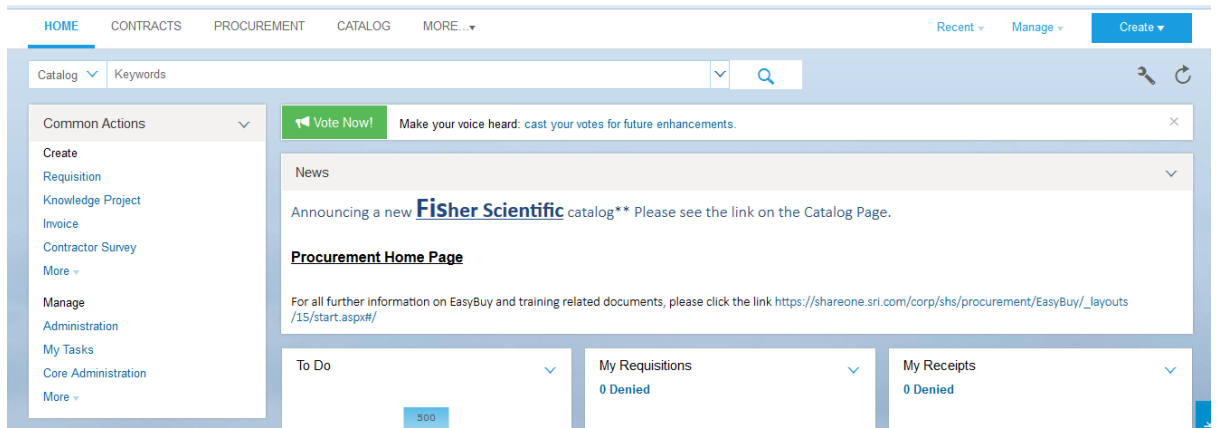
Currently the Adapter supports only outbound Web services data integration with the Ariba Application and ERP System. Currently, Ariba Network is not supported.

Enabling the Integration Task in Ariba

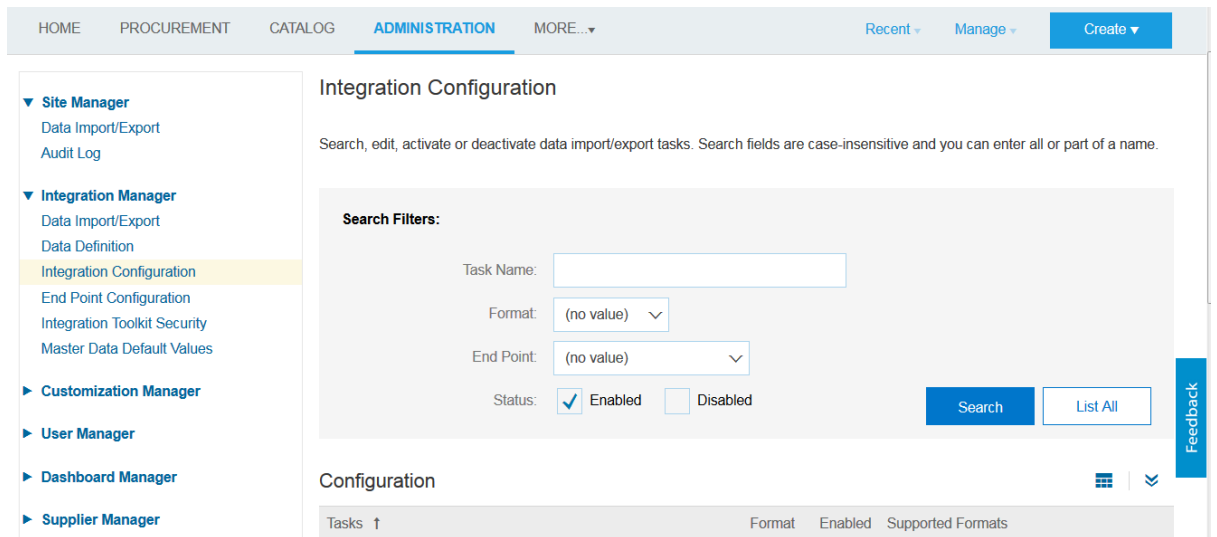
You need to enable the Integration task in Ariba before performing any operation in SOA.

Note: If the operation (Event) is not enabled in the Ariba application, the data will not be sent to the Ariba application for that event (Operation).

1. On the Ariba Spend Management dashboard, click **Manage** and then **Administration**.



2. From the left menu, click **Integration Manager** and then click **Integration Configuration**.



3. Find the task you want to enable. Select **List All** or enter search criteria and click **Search**.

- For the task, click **Action** and then click **Edit**. An **Edit data import/export** task pane appears as shown in the figure.

Integration Manager
 Data Import/Export
 Data Definition
Integration Configuration
 End Point Configuration
 Integration Toolkit Security
 Supplier Integration Configuration

Master Data Manager
 Supplier and Customer Manager
 User Manager
 Customization Manager
 Reporting Manager
 Project Manager
 Dashboard Manager
 Commodity Code Manager

Task Name:
 Format: Web Service
 End Point: InboundEndpoint
 Status: Enabled Disabled

Search List All

Configuration

Tasks ↑	Format	Enabled	Supported Formats	
[Deprecated] Upload document <small>Upload Document. This has been deprecated. Use Import Document, Import Form Document or Import Sourcing Event instead.</small>	Web Service	No	[Web Service]	Actions ▾
Export Organizations <small>Export organizations</small>	Web Service	No	[Web Service]	Actions ▾ Edit Enable Disable

- In the **Status** field, select **Enabled**.

HOME PROCUREMENT CATALOG **ADMINISTRATION** MORE... Recent Manage Create

Edit data import/export task Save Cancel

Activate or deactivate task, specify integration format and connectivity information.

Name: Catalog Item Search View WSDL

Description: Search for Catalog Items

Status: Enabled Disabled

Format: Web Service

Type: Inbound to Ariba System

End point: InboundEndpoint_Test ⓘ

URL: *

Feedback

- Use the drop-down menu for the **End point** field to select an end point.
- If you are configuring a service that uses an outbound end point, specify the URL for the corresponding endpoint on the EAI system.
- Click **Save**.

Generating a WSDL File to Call Ariba with the SOAP Adapter

Follow the steps mentioned below for generating WSDL in Ariba:

- On the Ariba Spend Management dashboard, click **Manage** and then click **Administration**.
- Click the expansion arrow for **Integration Manager**.
- Select **Integration Configuration**.

4. Find the task for which you want to generate the WSDL file. Select List All or enter the search criteria and click search.
5. Click **Actions** and then **Edit** for the task.
6. Click the **View WSDL** link.

HOME PROCUREMENT CATALOG **ADMINISTRATION** MORE... Recent Manage Create

Edit data import/export task Save Cancel

Activate or deactivate task, specify integration format and connectivity information.

Name: Catalog Item Search [View WSDL](#)

Description: Search for Catalog Items

Status: Enabled Disabled

Format: Web Service

Type: Inbound to Ariba System

End point: InboundEndpoint_Test ⓘ

URL: *

Save Cancel

Feedback

- When you click the **View WSDL** link shown in the above picture, the WSDL opens in the browser and you can save it in your local system and then expose that as a SOAP service in SOA.

Installing the Cloud Adapters

See the README.txt available with the patch for instructions on installing the cloud adapters. After you complete the adapter installation, perform the tasks described in [Performing Postinstallation Configuration Tasks](#).

Note: For information about supported versions and platforms, see the release certification matrix at [Supported System Configurations](#).

Performing Postinstallation Configuration Tasks

You must perform postinstallation configuration tasks after installing the cloud adapters.

For information about postinstallation configuration tasks, see the *Oracle Cloud Adapters Postinstallation Configuration Guide*.

Obtaining the Authentication Credentials

To access Ariba you must have an existing Ariba user account. A user account is required to provide the credentials necessary to create the connection and integration.

The Admin user can provide Security Credentials to the user by creating new permissions for inbound and outbound Endpoint Configuration.

The same credentials can be used by the end user while creating the connection and integration in SOA & OSB.

Unsupported Features

The adapter does not support the following features:

- Currently, the Ariba (SOA) adapter does not provide support to integrate with Ariba Network.
- Adapter runtime retry configuration properties such as `jca.retry.count`, `jca.retry.backoff`, `jca.retry.interval`, and `jca.retry.maxInterval`.
- Message recovery in the Error Hospital in Oracle Enterprise Manager Fusion Middleware Control.
- The display of properties in the Properties tab for a reference (outbound) adapter in Oracle Enterprise Manager Fusion Middleware Control (for example, service WSDL URL, CSF key used, and others). These are the reference adapters that you select on the Services and References page.
- Rejected message handling
- The following message encryption and decryption features available when you right-click a cloud adapter in the **Exposed Service** swimlane or **External References** swimlane in Oracle JDeveloper:
 - **Protect Sensitive Data > Encrypt Request Data** for cloud adapters in the Exposed Service swimlane.
 - **Protect Sensitive Data > Decrypt Sensitive Data** for cloud adapters in the External References swimlane.
- The policy attachments feature available when you right-click a cloud adapter in the **Exposed Service** swimlane or **External References** swimlane in Oracle JDeveloper.

2.

Creating an Ariba Adapter Connection

This chapter consists of the following topics:

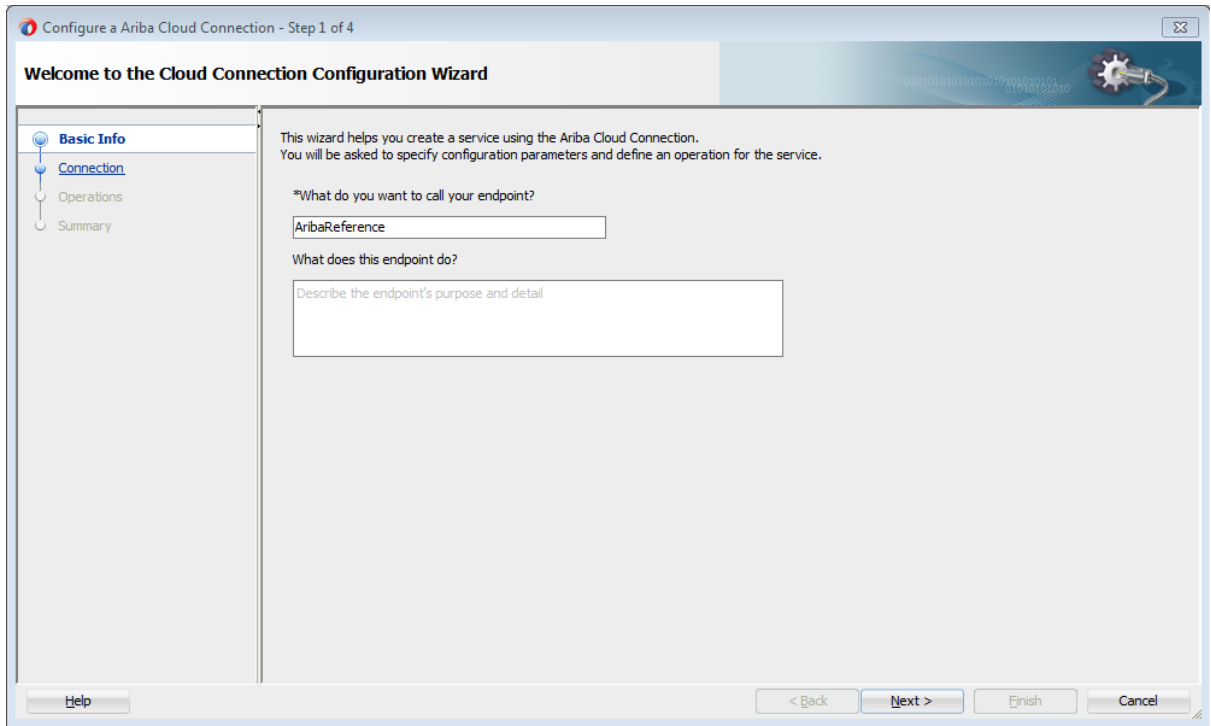
- [Designing an Integration with the Adapter Configuration Wizard](#)
- [Monitoring Your Application During Runtime](#)
- [Artifacts Creation](#)

Designing an Integration with the Adapter Configuration Wizard

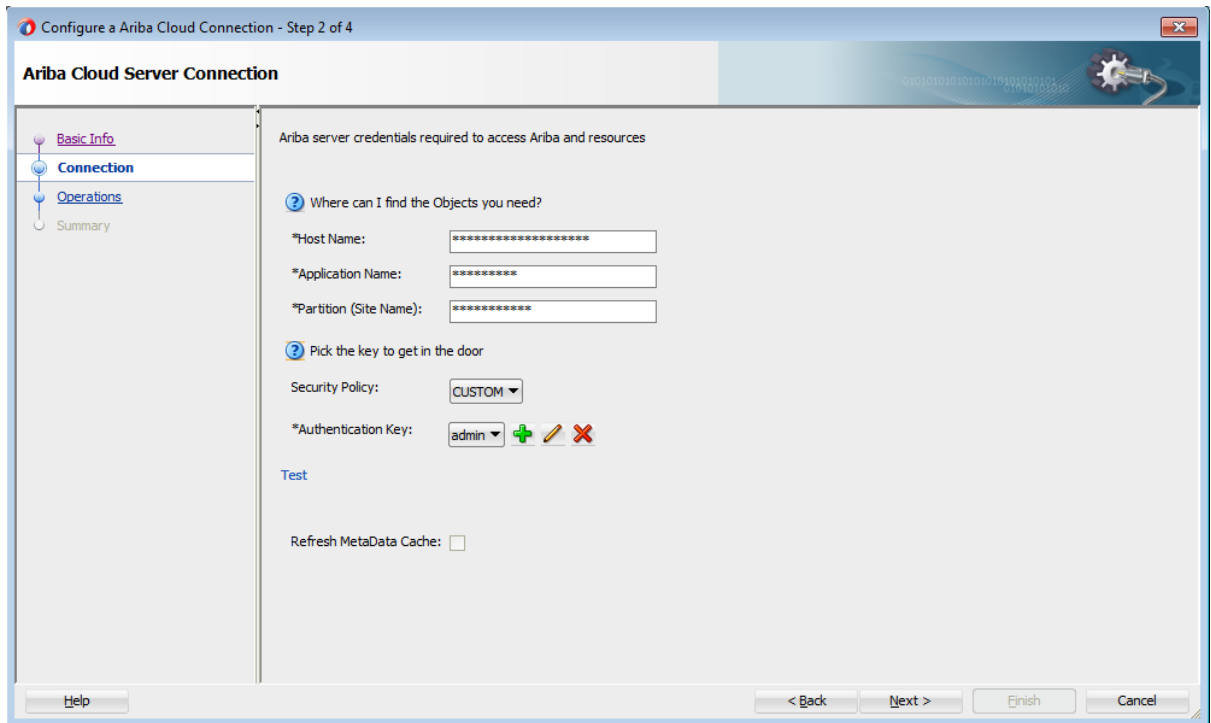
You use the Adapter Configuration Wizard to include the Ariba Adapter in a SOA composite application or an Oracle Service Bus business service.

The Adapter Configuration Wizard consists of configuration pages that enable you to select the artifacts required to communicate with the Ariba Cloud application. You can configure the adapter in the outbound (target) direction.

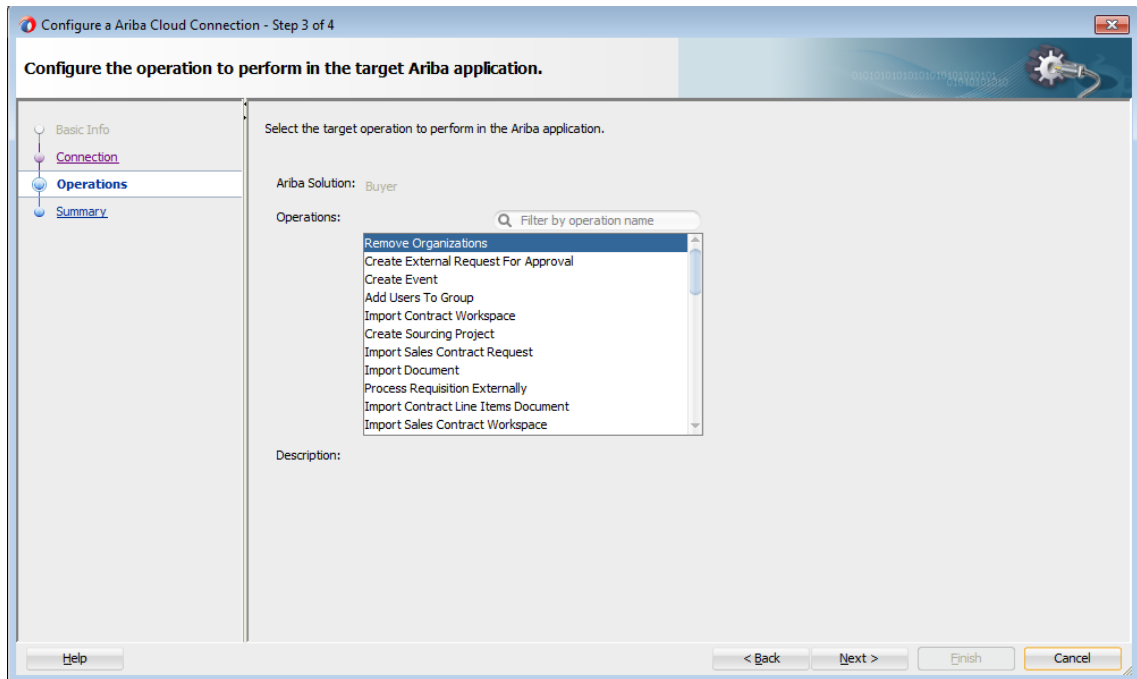
1. The Basic Info page prompts you to enter a meaningful name and optional description.



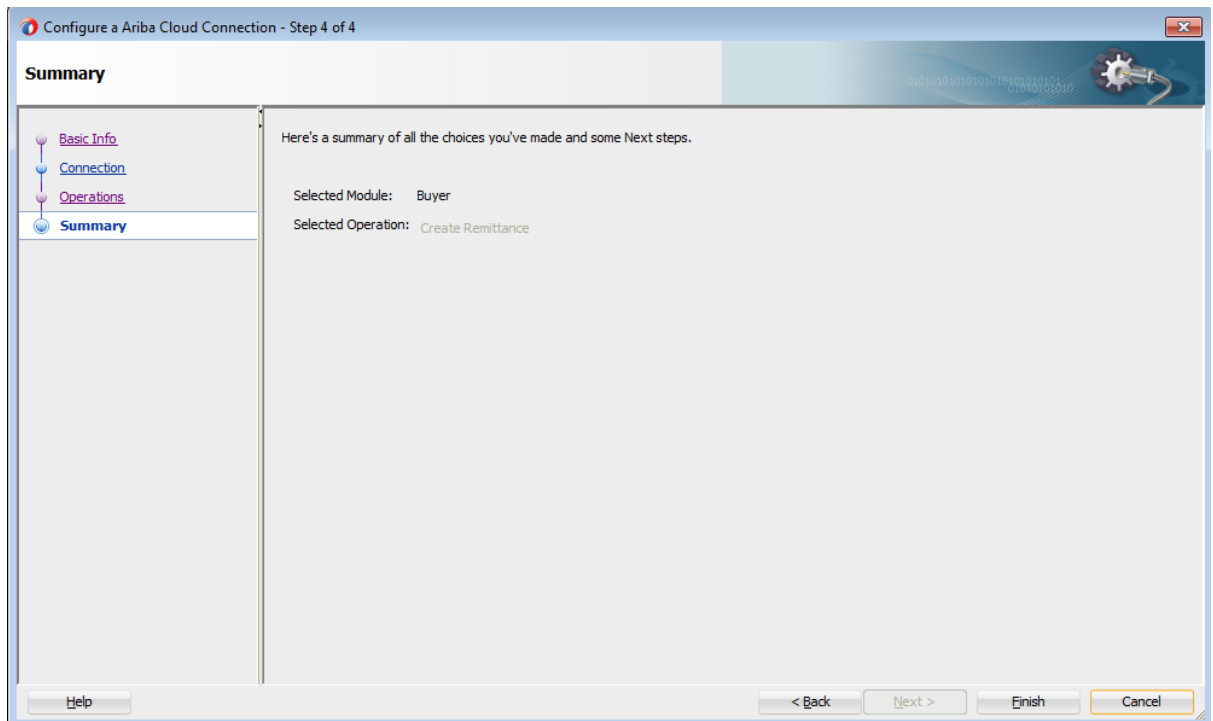
2. The Connection page prompts you to specify the **Ariba Host Name**, **Application Name**, **Partition Name** and **Security Policy** and **Authentication Key** to use. The authentication key is created by clicking the **Add** icon to specify the key name, user name, and password. You must also specify these same values in Oracle Enterprise Manager Fusion Middleware Control. For instructions, see the *Oracle Cloud Adapters Postinstallation Configuration Guide*.



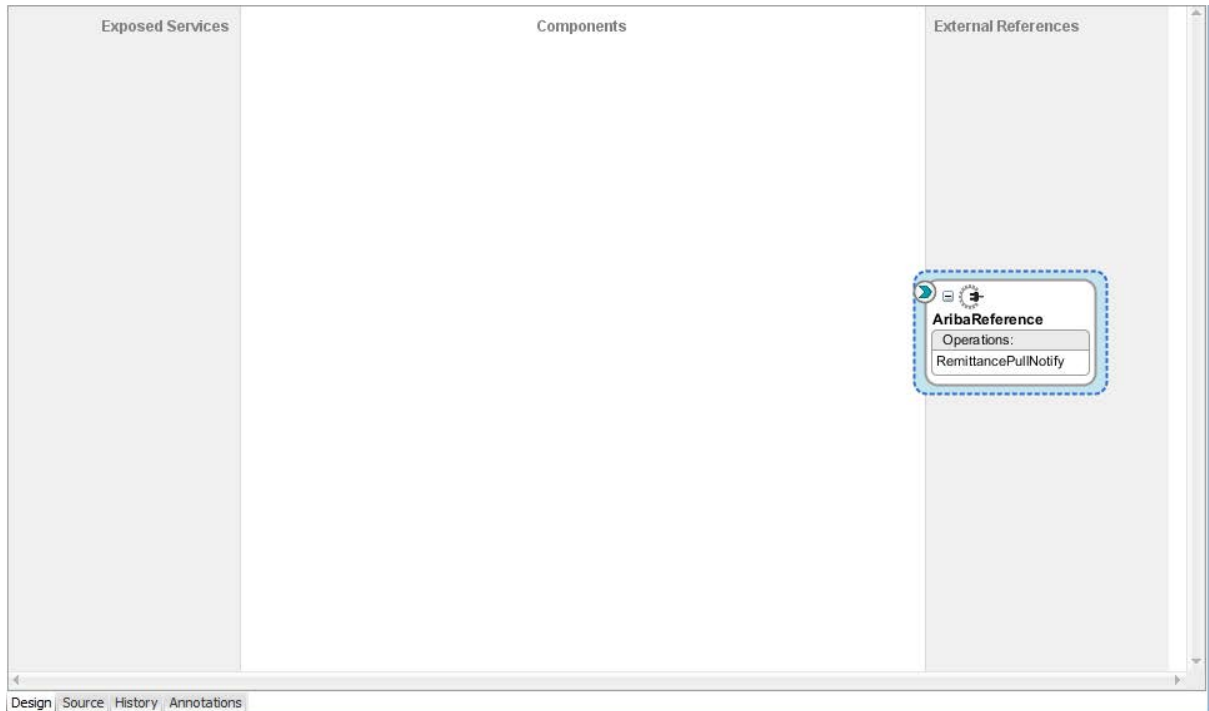
3. The Operations page prompts you to select the target operation that you are going to perform in the Ariba Application.



4. The Summary page displays your selections for the outbound direction.



5. The Adapter will be visible in the External references of JDeveloper.



Monitoring Your Application During Runtime

This section describes the design time and runtime aspects of using the Ariba Adapter. You use the runtime part of the adapter for delivering the information generated during design time to the service endpoint. You can monitor your SOA composite application or Oracle Service Bus business service from Oracle Enterprise Manager Fusion Middleware Control. You can also test your Oracle Service Bus business service from Oracle Service Bus Console.

Artifacts Creation

The following artifacts are created for each adapter instance in the Applications window in Oracle JDeveloper:

- WSDL file: Only the standard WSDL file type is supported.
- JCA file: Contains the internal implementation details used by the adapter during runtime. It contains the different interaction and connection properties used by the adapter.

When application configuration is complete, you can deploy the application from Oracle JDeveloper to the runtime environment.

For information about the details to specify in the fields of the wizard pages, see [Configuring Oracle Ariba Cloud Connection Properties](#).

3.

Designing SOA Composite Applications

This section describes how to design a SOA composite application with the Ariba Adapter.

This section consists of the following topics:

- [Creating a SOA Composite Application](#)
- [Adding an Adapter to a SOA Composite Application as a Reference](#)
- [Completing Design of a SOA Composite Application](#)

Creating a SOA Composite Application

This section provides an overview of how to create a SOA composite application in which to include the adapter as an exposed service or external reference.

1. Start Oracle JDeveloper.
2. From the **File** menu, select **New > Application**.
3. In the New Gallery dialog, select **SOA Application** from the **Items** list, then click **OK**. The SOA Create SOA Application wizard is displayed.
4. Specify an application name, and click **Next**.
5. Specify a project name, and click **Next**.
6. Select **Composite with BPEL Process**, and click **Finish**.

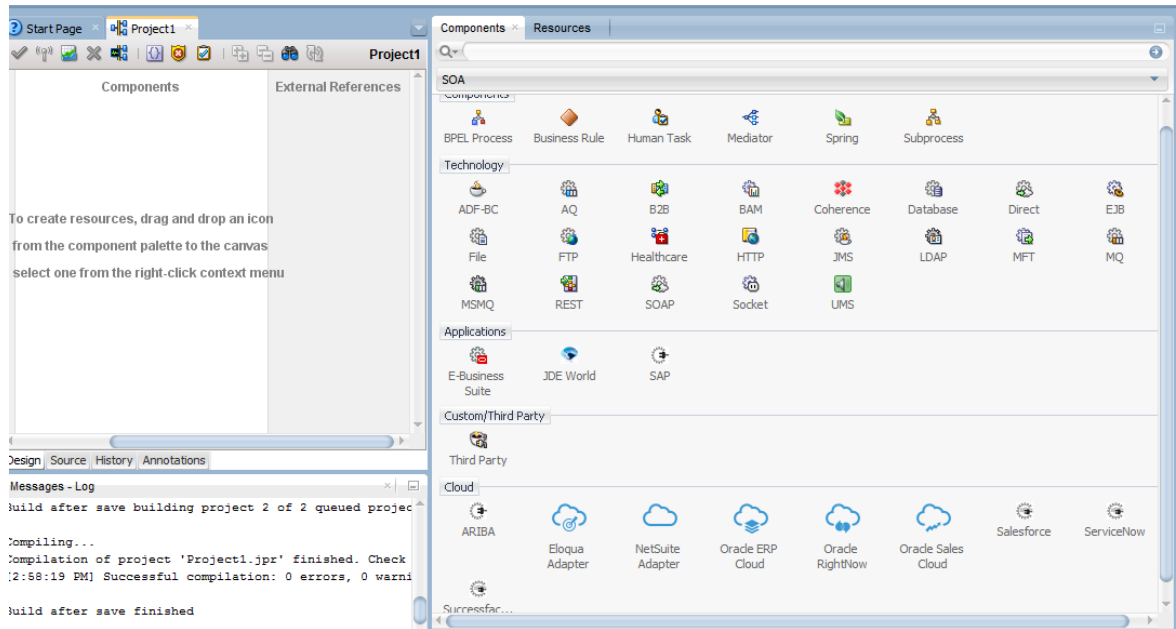
The SOA composite application is displayed for designing in the SOA Composite Editor.

Adding an Adapter to a SOA Composite Application as a Reference

You can add an Ariba Cloud Cloud adapter to a SOA composite application as an outbound (target) reference to the **External References** swimlane in Oracle JDeveloper.

1. Go to the Component Palette in your SOA composite application.
2. Go to the **Cloud** section under **Custom/Third Party**.

The adapters are displayed.



3. To create an outbound (target) reference, drag the adapter to the **External References** swimlane, and see the following sections that describe the wizard pages for configuring the adapter
 - [Configuring Basic Information Properties](#)
 - [Configuring Oracle Cloud Adapter Connection and CSF Key Properties](#)
 - [Configuring Ariba Adapter Invoke Operations Page](#)
 - [Reviewing Configuration Values on the Summary Page](#)

Completing Design of a SOA Composite Application

This section provides an overview of how to complete design of your SOA composite application and deploy the application.

1. Design the remaining contents of your SOA composite application. For example:
 - a) Connect the BPEL process to the adapter. For this example, the BPEL process is connected to the adapter as an external reference:
 - b) Design the contents of the BPEL process. For example:
 - a. Double-click the BPEL process.
 - b. Add and configure an invoke activity to invoke the adapter

- c. Add and configure assign activities to copy the contents of one variable to another when sending and receiving messages to and from the adapter.
- d. Add and configure other activities, as appropriate.

When complete, view the SOA composite application in the SOA Composite Editor.

For specific information about creating and designing SOA composite applications, see *Developing SOA Applications with Oracle SOA Suite*.

2. Deploy the SOA composite application:
 - a. In the navigator, right-click the project and select **Deploy > project_name**.
 - b. Follow the steps in the deployment wizard to deploy the SOA composite application to the application server.

Designing Oracle Service Bus Business Services

This section describes how to design an Oracle Service Bus business service with the adapter in Oracle JDeveloper.

- [Creating an Oracle Service Bus Business Service](#)
- [Adding an Adapter to a Business Service as a Reference](#)
- [Completing Design of an Oracle Service Bus Business Service](#)

Creating an Oracle Service Bus Business Service

This section provides an overview of how to create an Oracle Service Bus business service in which to include the adapter in Oracle JDeveloper.

1. Start Oracle JDeveloper.
2. From the File menu, select **New > Application**.
3. In the New Gallery dialog, select **Service Bus Application** from the Items list, then click **OK**.
4. Specify an application name, and click **Next**.
5. Specify a project name.
6. Select **Service Bus**, and click **Finish**.

The Oracle Service Bus business service is displayed for designing in the Oracle Service Bus Overview Editor.

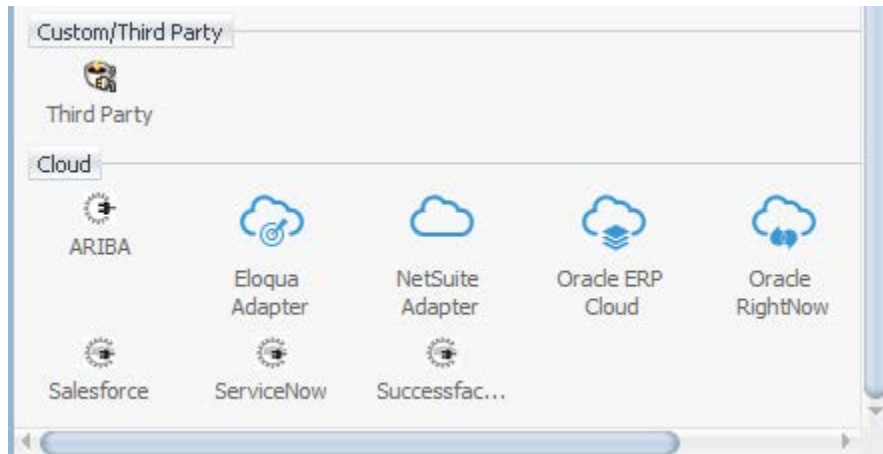
Adding an Adapter to a Business Service as a Reference

You can add the adapter to an Oracle Service Bus business service as an outbound (target) external service to the External Services swimlane in Oracle JDeveloper.

Note: If the Import OSB Resource dialog is displayed during adapter configuration, click **Cancel**. You cannot localize the WSDL file.

1. Go to the Component Palette in your Oracle Service Bus business service.

2. Go to the **Cloud** section under **Custom/Third Party**.



3. To create an outbound (target) external service, drag the adapter to the External Services swimlane, and see the following sections that describe the wizard pages for configuring the adapter:
 - [Configuring Basic Information Properties](#)
 - [Configuring Oracle Cloud Adapter Connection and CSF Key Properties](#)
 - [Configuring Ariba Adapter Invoke Operation Properties](#)
 - [Reviewing Configuration Values on the Summary Page](#)

Completing Design of an Oracle Service Bus Business Service

This section provides an overview of how to complete design of your Oracle Service Bus business service and deploy the application.

1. Design the contents of your Oracle Service Bus business service. For example, to configure an Oracle Service Bus proxy service in your business service:
 - a) In the Oracle Service Bus Overview Editor, right-click the **Pipeline/Split Joins** lane and select **Insert > Pipeline**.

The Create Pipeline Service dialog is displayed.
 - b) Enter a name for the pipeline and select the project location, then click **Next**
 - c) Select **WSDL** as the **Service Type**.
 - d) To the right of the **WSDL** selection, click the **Browse** icon to select the WSDL.
 - e) Select **Application**.
 - f) Expand **Resource Chooser** and select the WSDL file, then click **OK**.
 - g) Ensure that **Expose as a Proxy Service** is selected.
 - h) From the **Proxy Transport** list, select **http**, then click **Finish**.

The **Pipeline** component is displayed in the Oracle Service Bus Overview Editor.

- i) Connect the external service to the **Pipeline** component.

For more information about creating and designing an Oracle Service Bus business service, see *Developing Services with Oracle Service Bus*.

2. Open the pipeline that shows the default routing.
3. Verify the service and corresponding operation are displayed in the Routing Properties tab at the bottom of the dialog.

The outbound project is ready for deployment.

4. Deploy the business service.

Note: You cannot use Oracle JDeveloper to deploy a business service to Oracle SOA Cloud Service. For information about other deployment options, see *Using Oracle SOA Cloud Service*.

- a) Select the project, then select **Deploy to Service Bus Server**.
- b) Follow the steps in the deployment wizard.

5.

Configuring Ariba Adapter Properties

The Ariba Adapter enables you to create integrations with a Ariba Saas cloud application.

The following sections describe the wizard pages that guide you through configuration of the Ariba Adapter as an invoke in an integration. The Ariba Adapter cannot be configured as a trigger in an integration.

This chapter consists of the following topics:

- [Configuring Basic Information Properties](#)
- [Configuring Oracle Cloud Adapter Connection and CSF Key Properties](#)
- [Configuring Ariba Adapter Invoke Operation Properties](#)
- [Reviewing Configuration Values on the Summary Page](#)

Configuring Basic Information Properties

You can enter a name and description on the Basic Info page of each source and target adapter in your integration.

This section consists of the following topics:

- [What You Can Do from the Basic Info Page](#)
- [What You See on the Basic Info Page](#)

What You Can Do from the Basic Info Page

You can specify the following values on the Basic Info page. The Basic Info page is the initial wizard page that is displayed whenever you drag an adapter to the trigger (source) or invoke (target) area supported by your adapter.

- Specify a meaningful name.
- Specify a description of the responsibilities.

What You See on the Basic Info Page

The following table describes the key information on the Basic Info page.

Element	Description
What do you want to call your endpoint?	<p>Provide a meaningful name so that others can understand the responsibilities of this connection. You can include English alphabetic characters, numbers, underscores, and dashes in the name. You cannot include the following:</p> <ul style="list-style-type: none">• Blank spaces (for example, My Inbound Connection)• Special characters (for example, #;83& or righ(t)now4)• Multibyte characters
What does this endpoint do?	<p>Enter an optional description of the connection's responsibilities. For example: This connection receives an inbound request to synchronize account information with the cloud application.</p>

Configuring Oracle Cloud Adapter Connection and CSF Key Properties

Enter the Oracle Cloud adapter configuration connectivity and Credential Store Framework (CSF) key values for your integration.

This section consists of the following topics:

- [What You Can Do from the Oracle Cloud Adapter Connection Page](#)
- [What You See on the Oracle Cloud Adapter Connection Page](#)
- [What You Can Do from the Oracle Cloud Adapter CSF Key Page](#)
- [What You See on the Oracle Cloud Adapter CSF Key Page](#)

What You Can Do from the Oracle Cloud Adapter Connection Page

You can specify the following connection values for the Oracle Cloud adapter.

- Specify the WSDL URL for some adapters. For the Ariba Adapter ,you need to specify the **HostName**, **Application Name**, and **Partition Name**.
- Specify the security policy.
- Create the authentication key. A key created for one direction (for example, outbound) is also available for selection in the other direction (for example, inbound).

What You See on the Oracle Cloud Adapter Connection Page

The following table describes the key information on the Oracle Cloud Adapter Connection page.

Element	Description
Host Name	Enter the host name of the SAP Ariba server.. For example: https://s1.ariba.com
Application Name	Select Buyer. Note: Supplier is not supported.
Partition Name	In the Partition (Site Name) field, enter the name of the SAP Ariba server partition on which you want to execute operations. For example: *****/Procurement.s1.ariba.com
Security Policy	Select the security policy appropriate to your environment (for example, USERNAME_PASSWORD_TOKEN). <ul style="list-style-type: none">• The wizard shows all policies, including those that may not be applicable. To make a correct selection, you must have a knowledge of policies. For example, you cannot select a SAML-based policy because the identity is not propagated.• The policies you apply to the cloud adapter are unique to the cloud adapter and do not impact other endpoints in the composite.
Authentication Key	Select the CSF authentication key. <ul style="list-style-type: none">• Add: Click Add to create a new authentication key. You must specify the key name, user name, and password.• Edit: Click to edit an authentication key.• Delete: Click to delete an authentication key.
Test	Click to validate the authentication key.

What You Can Do from the Oracle Cloud Adapter CSF Key Page

You can specify the following CSF key values for the Oracle Cloud adapter.

- CSF key name
- User name and password
- Re-enter password

What You See on the Oracle Cloud Adapter CSF Key Page

The following table describes the key information on the Oracle Cloud adapter CSF Key page.

Element	Description
CSF Key Name	Specify the CSF key to enable runtime injection of credentials. The adapter uses the CSF to retrieve the username and password

	required for authentication with the application (for example, the Oracle Sales Cloud or Oracle ERP application). This key identifies your login credentials during design-time.
User Name	Enter the user name for connecting to your application (for example, the Oracle Sales Cloud or Oracle ERP application). Your administrator provides you with user credentials.
Password	Enter the password for connecting to your application.
Re-enter Password	Re-enter the same password a second time.

Configuring Ariba Adapter Invoke Operation Properties

Enter the Ariba Adapter invoke operation values for your integration.

This section consists of the following topics:

- [What You Can Do from the Ariba Adapter Invoke Operations Page](#)
- [What You See on the Ariba Adapter Invoke Operations Page](#)

What You Can Do from the Ariba Adapter Invoke Operations Page

You can configure the following invoke operation values for the Ariba Adapter.

- Select the operation to perform.
- Select the business object on which to perform the operation.

What You See on the Ariba Adapter Invoke Operations Page

The following table describes the key information on the invoke Operations page.

Element	Description
Click Next Steps	<i>This feature is not currently available.</i>
Select Operation Type	<ul style="list-style-type: none"> • Import Contract Workspace — Imports contract workspace information from an external application into the SAP Ariba application • Create Suppliers — Imports supplier information from an external application into SAP Ariba. • Create Event — Imports event information from an external application into SAP Ariba. • Create External Request For Approval — Imports external requests for approval from an external application into SAP Ariba.

	<ul style="list-style-type: none"> • Create Remittance — Returns the amount paid to suppliers for each invoice. Select this operation when remittance information is imported from an ERP application directly into SAP Ariba. • Create Sourcing Project — Creates a sourcing project. • Create Organizations — Creates an organization. • Create External Contract Information — Returns contract information from external applications. • Create Procurement Unit — Imports procurement unit information from an external application into SAP Ariba. • Create Requisitions — Imports requisition information from an external application into SAP Ariba. • Catalog Item Search — Searches for catalog items in SAP Ariba to allow the synchronization of operations between SAP Ariba and external applications.
Filter by object name	Type the initial letters to filter the display of business objects.

Reviewing Configuration Values on the Summary Page

You can review the specified adapter configuration values on the Summary page.

This section consists of the following topics:

- [What You Can Do from the Summary Page](#)
- [What You See on the Summary Page](#)

What You Can Do from the Summary Page

You can review source or target configuration details from the Summary page. The Summary page is the final wizard page for each adapter after you have completed your configuration.

- View the configuration details you defined for the source or target adapter. For example, if you have defined an inbound source adapter with a request business object and immediate response business object, specific details about this configuration are displayed on the Summary page.
- Click **Done** if you want to save your configuration details.
- Click a specific tab in the left panel or click **Back** to access a specific page to update your configuration definitions.
- Click **Cancel** to cancel your configuration details.

What You See on the Summary Page

The following table describes the key information on the Summary page.

Element	Description
Summary	Displays a summary of the source or target configuration values you defined on previous pages of the wizard. For adapters for which a generated XSD file is provided, click the XSD link to view a readonly version of the file. To return to a previous page to update any values, click the appropriate tab in the left panel or click Back .

Managing Applications

You can manage and monitor an Oracle SOA Suite or Oracle Service Bus application that uses the adapter from Oracle Enterprise Manager Fusion Middleware Control or Oracle Service Bus Console.

This chapter consists of the following sections:

- [Managing the Application in Oracle Enterprise Manager Fusion Middleware Control](#)
- [Testing Oracle Service Bus Projects from Oracle Service Bus Console](#)

Managing the Application in Oracle Enterprise Manager Fusion Middleware Control

You manage the SOA composite application or Oracle Service Bus business service that includes your adapter in Oracle Enterprise Manager Fusion Middleware Control.

1. Log in to Oracle Enterprise Manager Fusion Middleware Control.
2. In the navigator, expand the tree to display your SOA composite application or Oracle Service Bus business service project (for this example, a SOA composite application is selected).
3. Select the SOA composite application.
4. Click **Test**.

The Test Web Service page is displayed.

5. Complete the fields on the page to initiate a test of your composite.
6. Click **Test Web Service**.

Invocation results are displayed.

7. Click **Launch Flow Trace** to view the flow trace of the SOA composite application, including flow details about the adapter.

For more information about monitoring applications from Oracle Enterprise Manager Fusion Middleware Control, see *Administering Oracle SOA Suite and Oracle Business Process Management Suite* and *Administering Oracle Service Bus*.

Testing Oracle Service Bus Business Services from Oracle Service Bus Console

You can test Oracle Service Bus business service projects from Oracle Service Bus Console.

1. Log in to Oracle Service Bus Console.

2. In the navigator under **All Projects**, open the project to test.
3. In the navigator, click the business service for that project.
4. Click the **Launch Test Console** (green arrow button) to test the outbound endpoint.

This opens a window that displays the proxy service and the operation to test.

5. Provide the input and click **Execute**.

This sends the payload to the Oracle Cloud application. The response is displayed under the **Response Document** section.

For more information about testing Oracle Service Bus business service projects, see *Administering Oracle Service Bus*.

7.

Troubleshooting

The following table describes the troubleshooting information.

Error	Cause	Solution
javax.net.ssl.SSLHandshakeException: Server chose TLSv1, but that protocol version is not enabled or not supported by the client	When Ariba Server is supporting TLSv1 and SOA is ending request with TLS version greater than TLSv1	Update the Weblogic.security.SSL.minimumProtocolVersion=TLSv1”in the “setStartupEnv.sh” file